

Targeting world-class Gold and Copper-gold systems in Australia

AGM- 20 November 2009

Disclaimer

- This Document is Confidential and may not be reproduced, redistributed or passed on, directly or indirectly.
- This Document is not a Prospectus nor an Offer to Subscribe for Shares.
- GBM and its Directors, employees and consultants make no representations or warranty as to the accuracy, reliability or completeness of this document, and have no liability, including liability to any person by reason of negligence of, or contained in or derived from, or for any omissions from this document, except liability under statute that cannot be excluded.
- This document contains reference to certain targets and plans of GBM which may or may not be achieved.
- The performance of GBM may be influenced by a number of factors, uncertainties and contingencies many of which are outside the control of GBM and its directors , staff and consultants.

The information in this report that relates to Exploration Results is based on information compiled by Neil Norris, who is a Member of The Australasian Institute of Mining and Metallurgy. Mr. Norris is a full-time employee of the company. Mr. Norris has sufficient experience which is relevant to the style of mineralisation and type of deposit under consideration and to the activity which he is undertaking to qualify as a Competent Person as defined in the 2004 Edition of the 'Australasian Code for Reporting of Exploration Results, Mineral Resources and Ore Reserves'. Mr. Norris consents to the inclusion in the report of the matters based on his information in the form and context in which it appears.

About GBM

Board :

Peter May – Non Executive Chairman – banking and corporate services.

Peter Thompson – M D > 30 years in the resource sector finance and BD roles.

Cameron Switzer – Non Executive > 20 years as a geologist.

Neil Norris - Exploration Director >30 years exploration and mining experience.

Strategy:

“Discover new deposit which has the potential to be commercially developed adding significant value to the Company and shareholders.”

Web page: www.gbmr.com.au

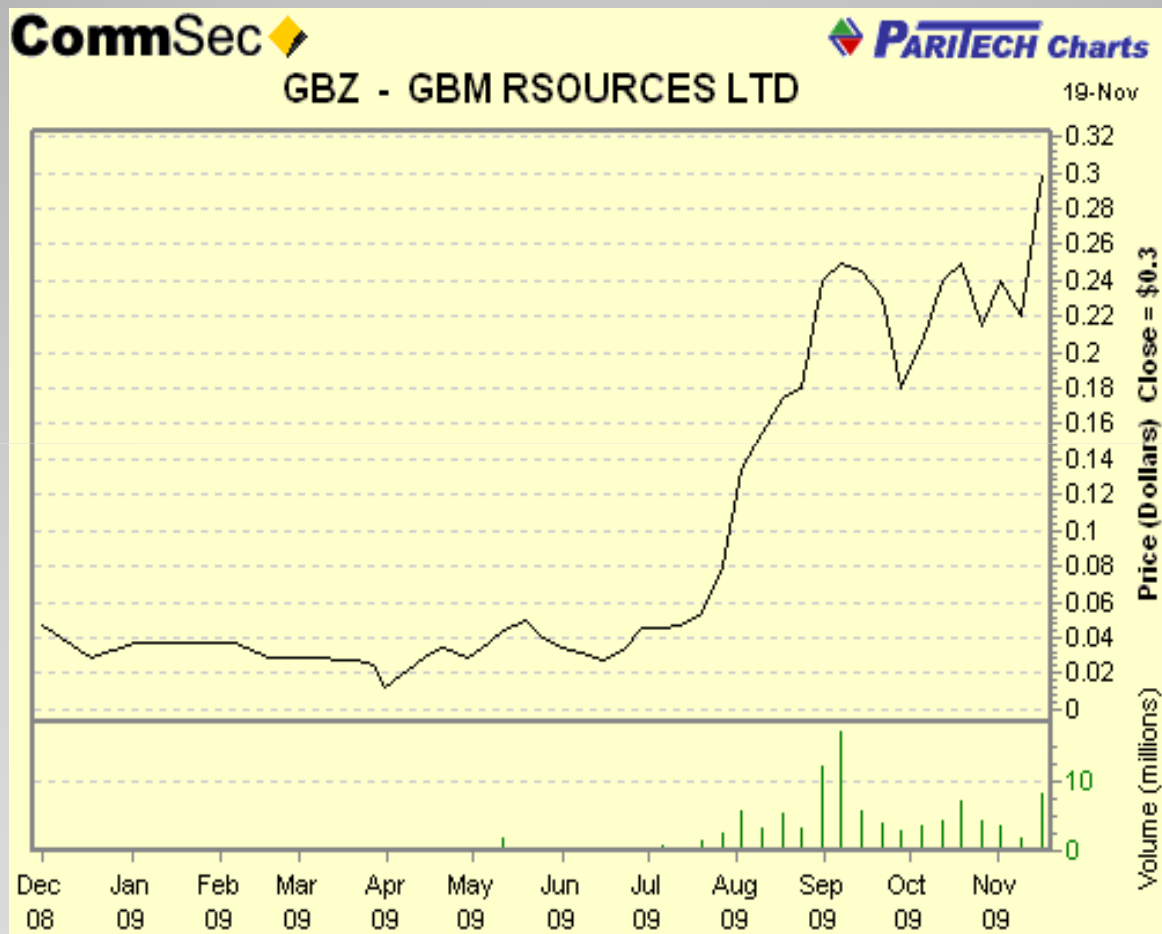
12 months– Key highlights

- Cash resources to meet exploration objectives for next 2 years.
- Strategic acquisition of tenements in the Mount Isa region.
- Realising the Potential of Brightlands Cu Au – Mount Isa.
- Confirmed large gold system at Malmsbury- 104,000 ounce resource.
- Phosphate discovery and JV = Achieving value from non core projects.
- Consolidation of Dee Range Cu & Au assets.

Capital Structure

ORD Shares	Total	Quoted	comment
Total	145,598	145,598	Market Cap. \$43M
Placement	12,500	12,500	raising \$2.5m @ 20 cents
Phosphate Sale	8,500	8,500	raising \$ 2.6m @ 31 cents
Total	166,598	166,598	
OPTIONS	46,879	46,879	25 cent/ 30 June 2010
	3,730	nil	unlisted 25 cent/ 30 June 2010
	20,000	nil	unlisted 22 cent/ 30 June 2010
Cash as at 30-Sep-09			\$1.4m
Cash from placement and phosphate:			\$ 4.8m

Market Rerating of the Sector



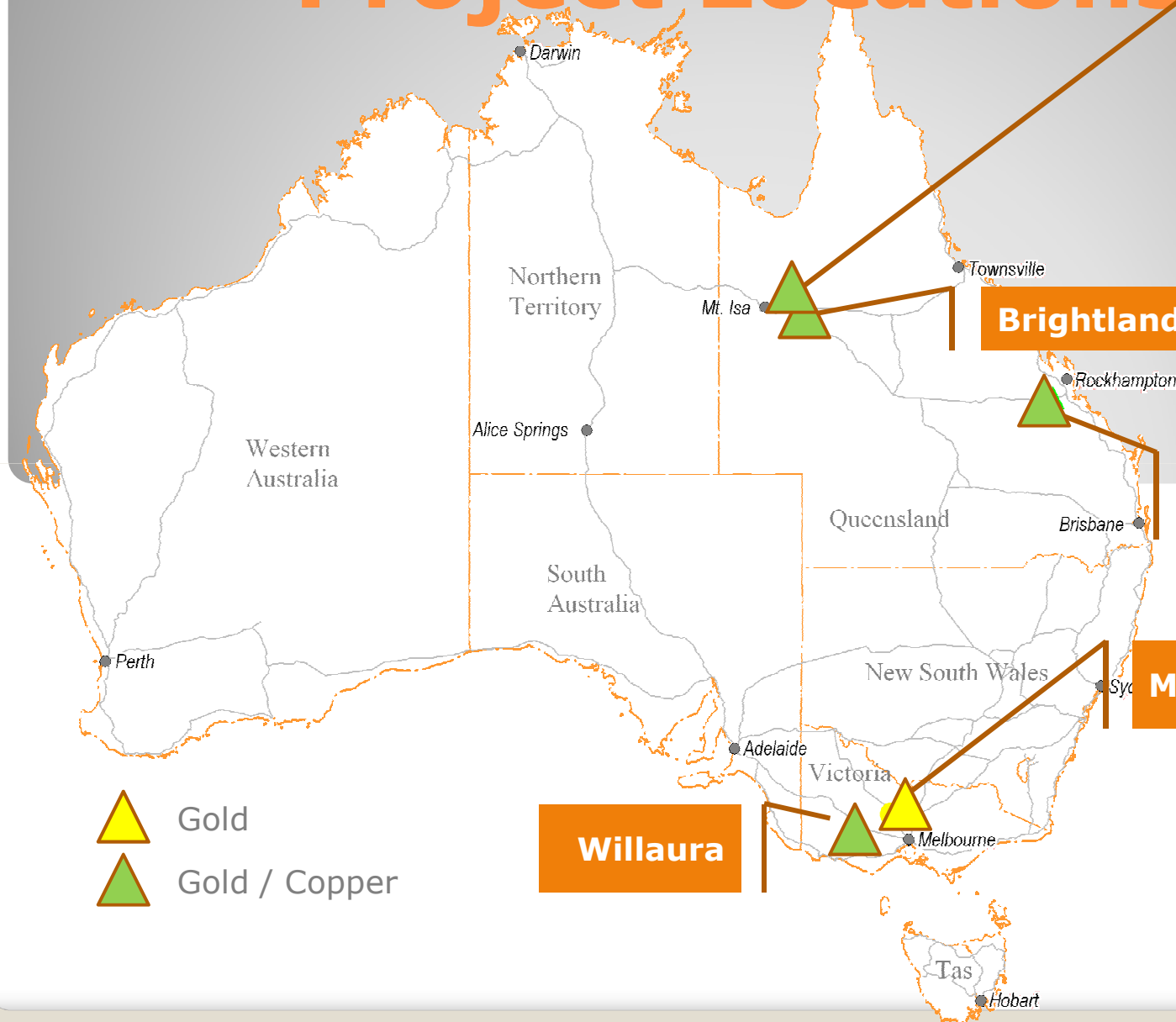
12 month Out look

- **Brightlands copper gold**
 - High potential for mineral discovery on Tiger.
 - Diamond drilling planned at Tiger
 - SAM and IP geophysics planned at other priority prospects.

- **Malmsbury Gold Project**
 - The deep hole to test for bulk tonnage Intrusive Related Gold System.

- **JV Initiatives**
 - Phosphate JV partner identified
 - Dee Range Cu-Au project – JV partner discussions.
 - Aim to JV or vend other non core projects in the Isa Region.

Project Locations





Mt Margaret
Bungalien
Horsecreek
Limestone
Grassy Bore
Talawanta

Brightlands

Dee Range

Malmsbury

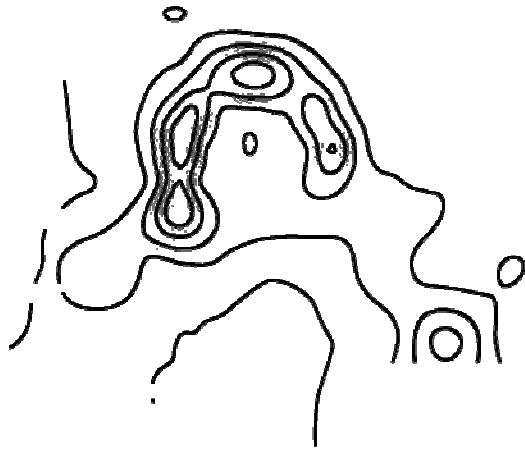
Willaura

-  Gold
-  Gold / Copper

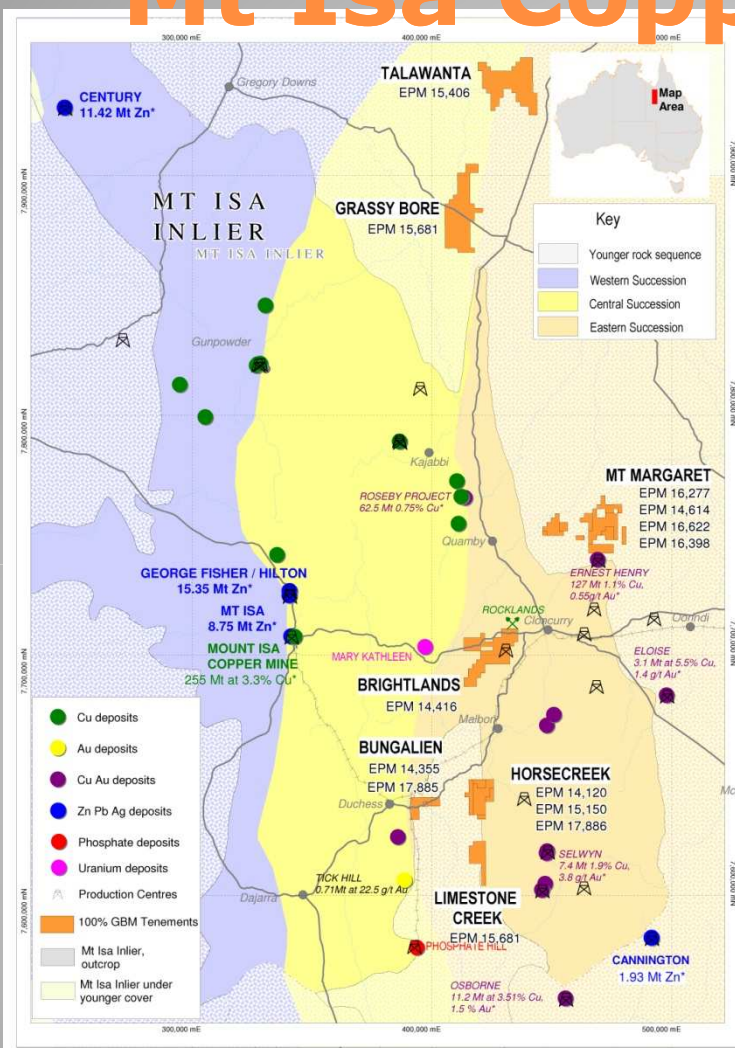
Mt Isa Copper Gold Projects



'nothing else on earth measures up'



Mt Isa Copper Gold Projects

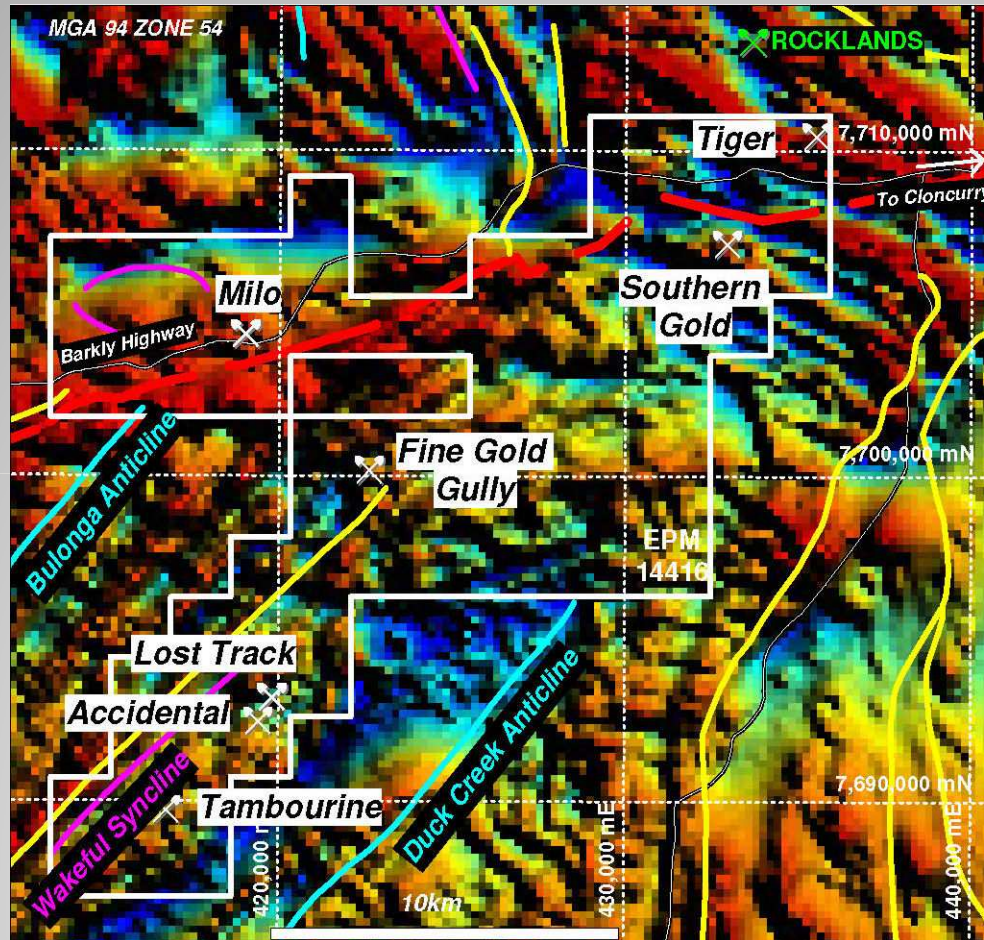


* All figures quoted from NW QLD Mineral Province Report, Qld Government DME, Nov 2000


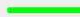
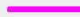



Ten Titles Four Project Areas:

- Brightlands: Au, Cu-Au-U
- Talawanta & Grassy Bore: IOCG
- Mt Margaret Group: IOCG
- Bungalien, Malbon2, Horse Creek & Limestone: IOCG, P

Brightlands

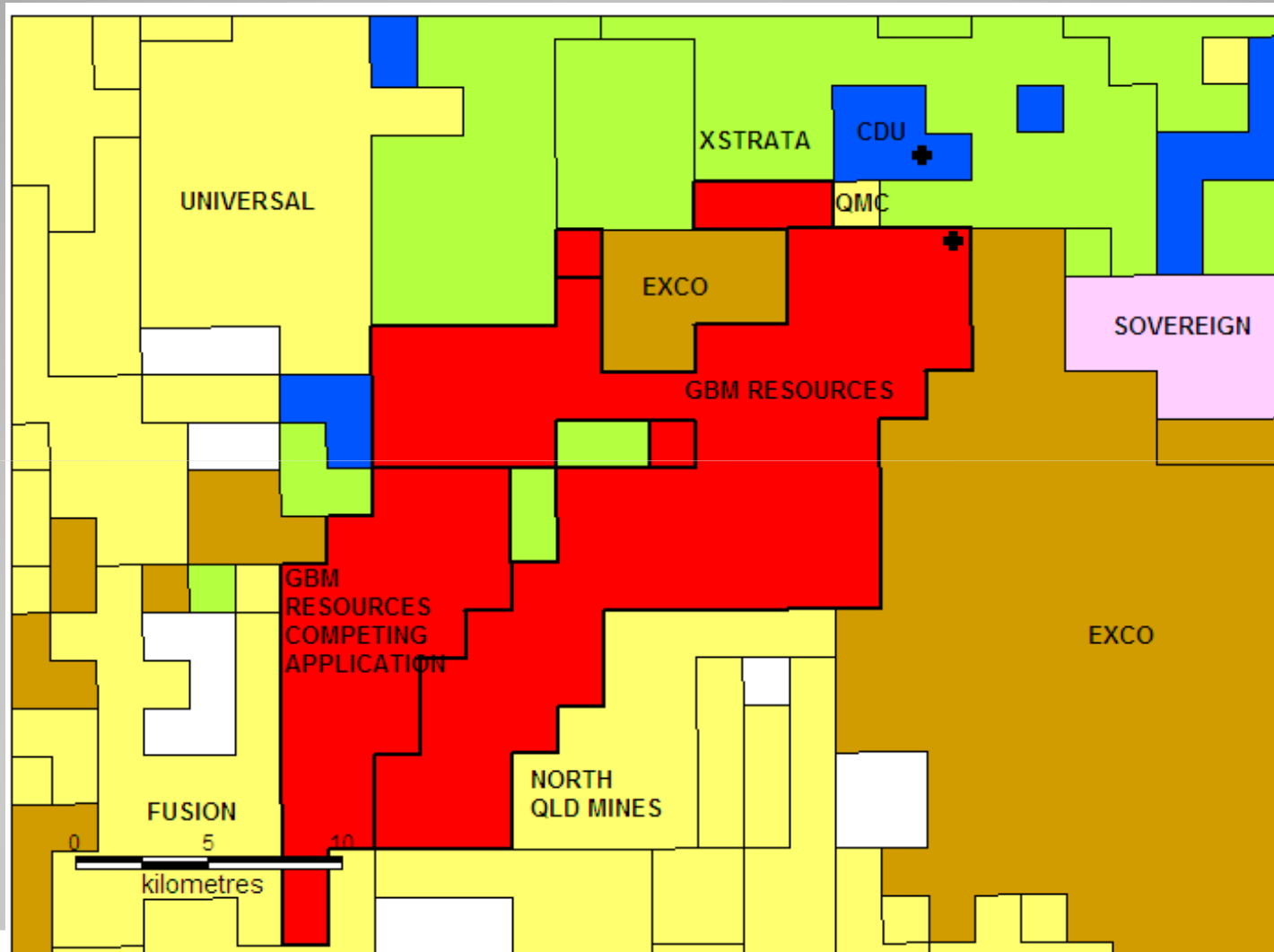


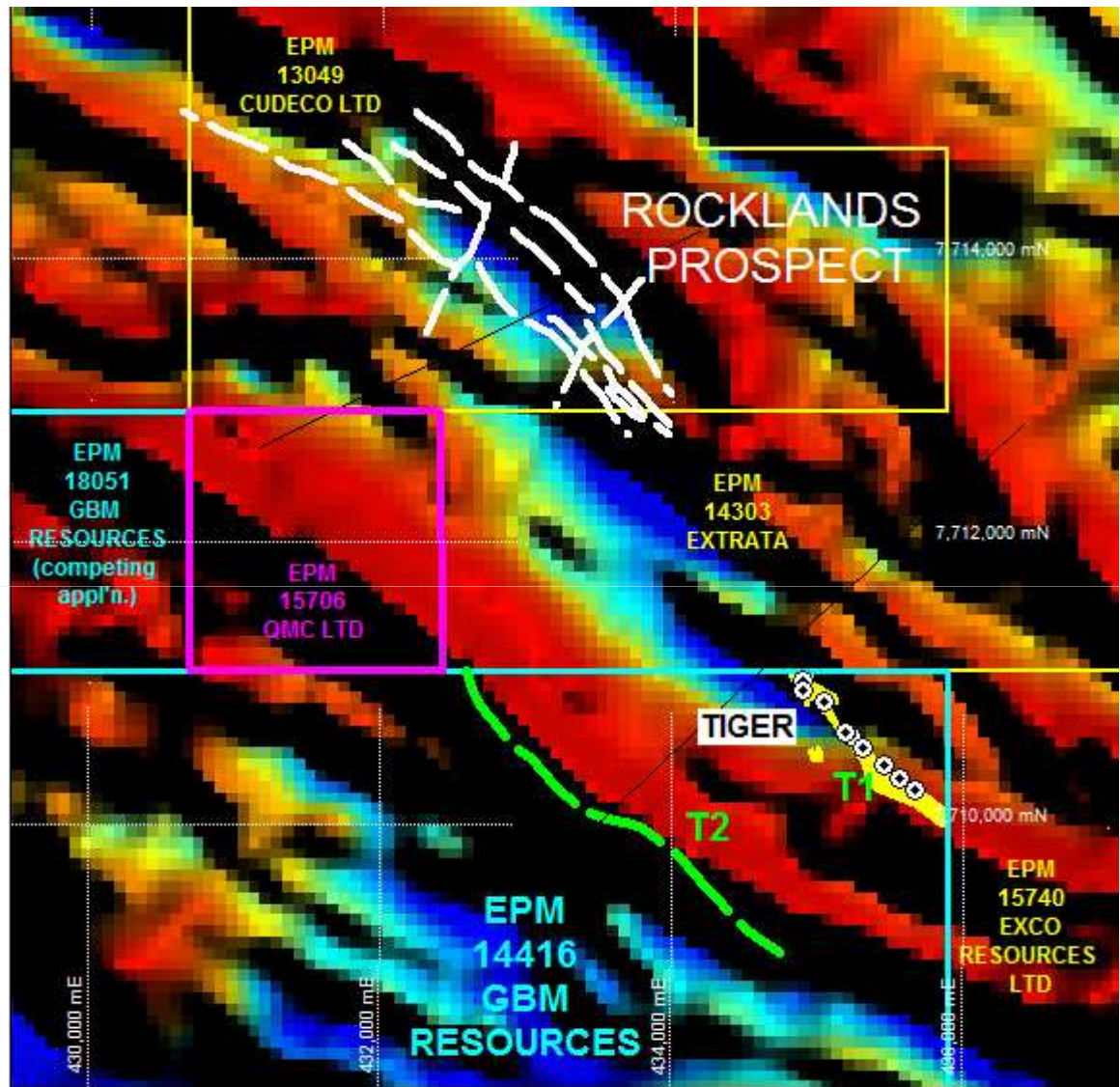
Key

-  Prospects
-  Anticline
-  Syncline
-  Cloncurry Flexure
-  Major Fault
-  Main Road



Brightlands Tenement Position



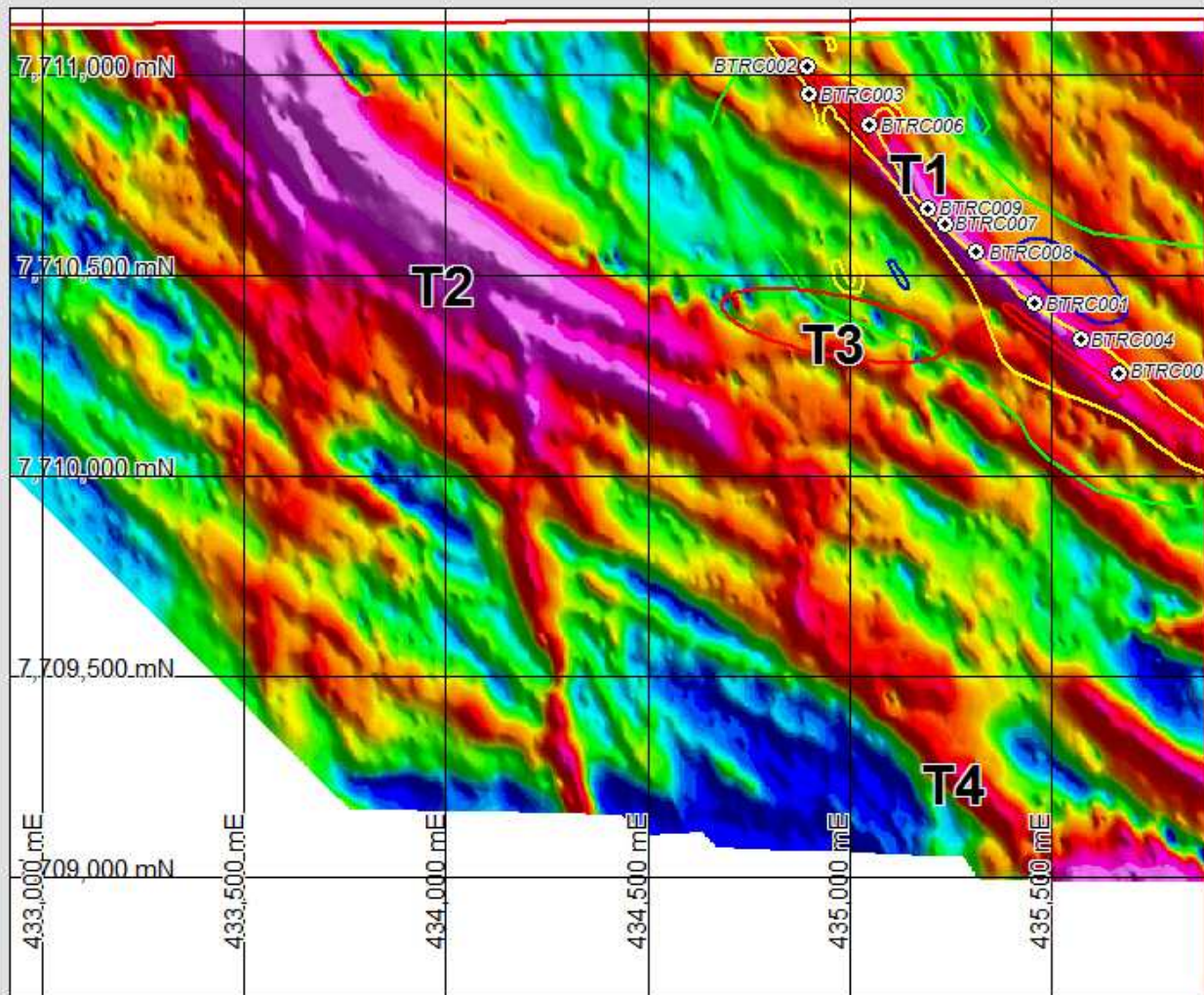


Brightlands

Location map Tiger and T2 zone

Tiger – T1 is a major fault system being part of the Rocklands Fault system

T2 - possible extension to Tiger over 3 kilometres



- Soil Cu ppm Countour
- 378 to 820 ppm
 - 125 to 378 ppm
 - 20 to 125 ppm
 - 0 to 20 ppm
- ~ Shear Zone
- ⊕ Drill hole

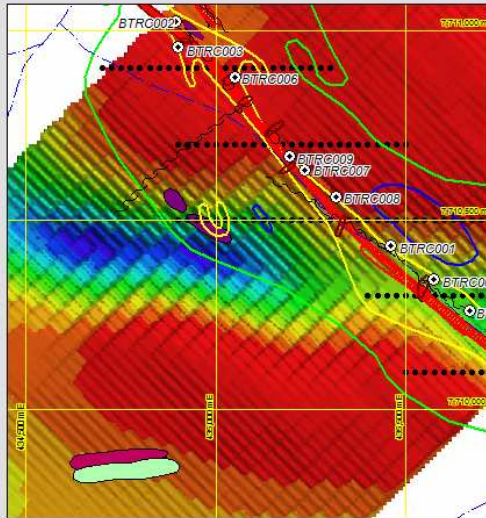
SAM EQMMR colour stretch from high (bright pink) 65 pT/Amp to low (deep blue) 32 pT/Amp



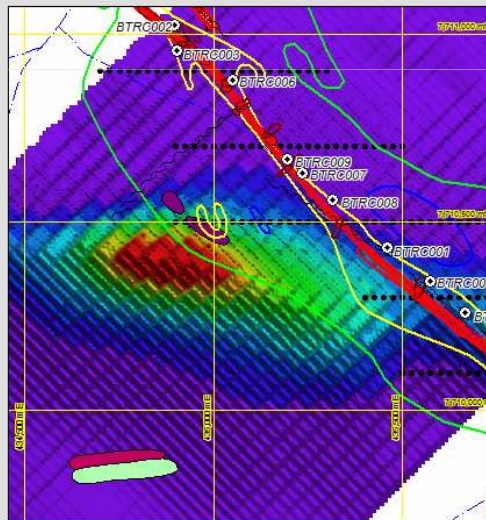
MGA 94 Zone 54S

**BRIGHTLANDS PROJECT
TIGER PROSPECT
PRELIMINARY SAM EQMMR IMAGE**





Resistivity 50RL



Chargeability 50RL



PROJECT LOCATION

In both chargeability and resistivity images, red represents the highest values and purple the lowest.

BRIGHTLANDS PROJECT
TIGER PROSPECT
3D IP MODEL, DEEP 150M BELOW SURFACE SLICE



Tiger Prospect 3D IP model slices.. Grid shown GDA94.

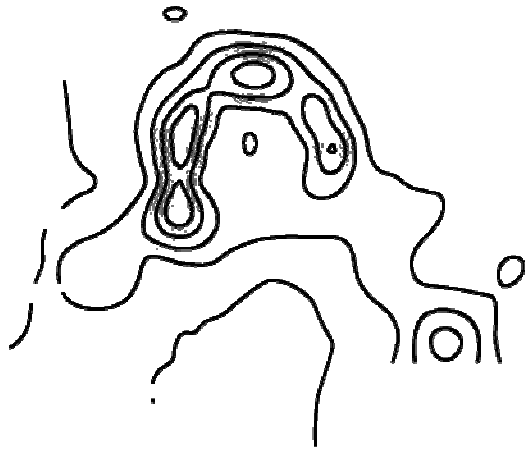
Tiger Prospect T3 – Deep target zone for sulphide hosted Cu mineralisation

At 150 metres below surface the Resistivity image (first image blue colour outline) and the strong Chargeability (second image red colour outline) is becoming more intense at this depth - being more conductive rock.

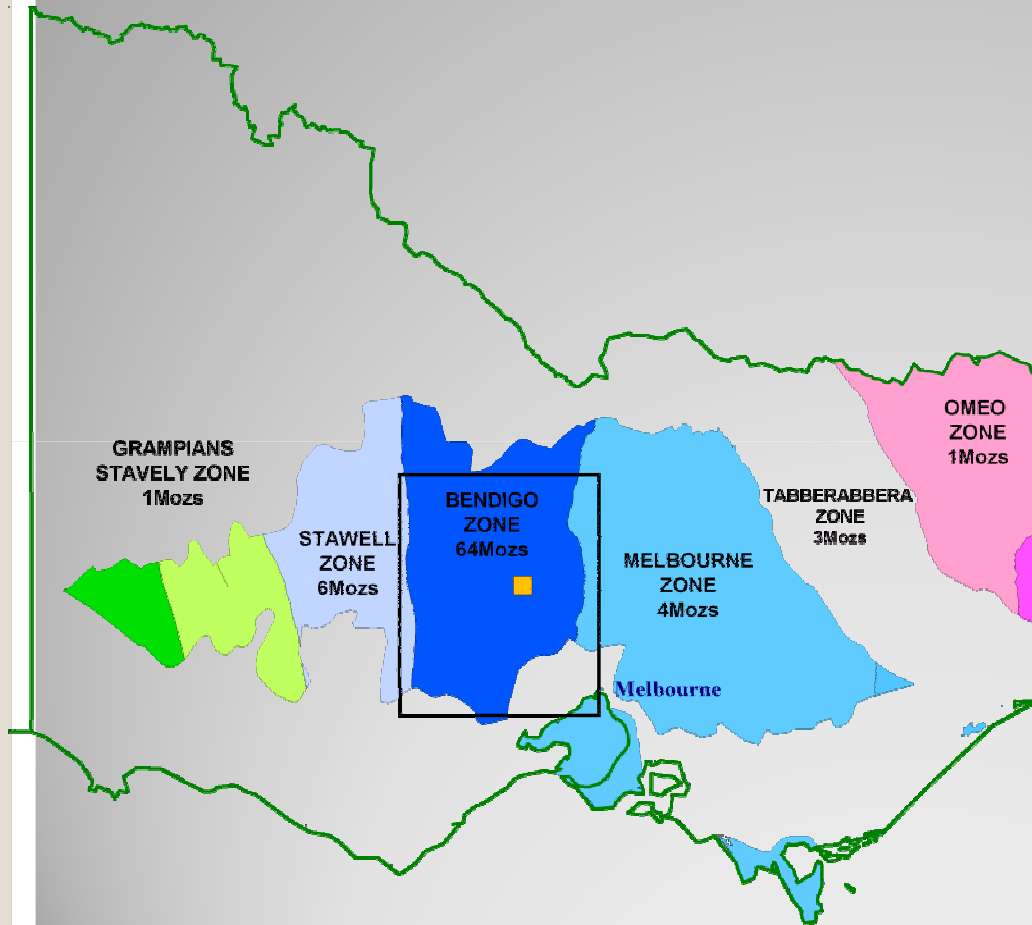
This response is interpreted to indicate significant increase in intensity of primary sulphide mineralisation at depth.

Malmsbury Gold Project

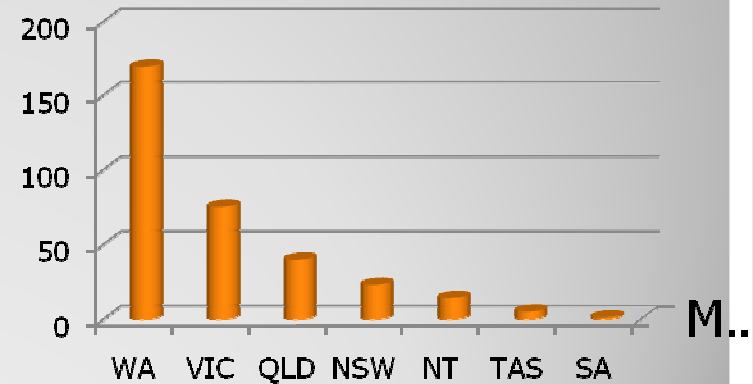
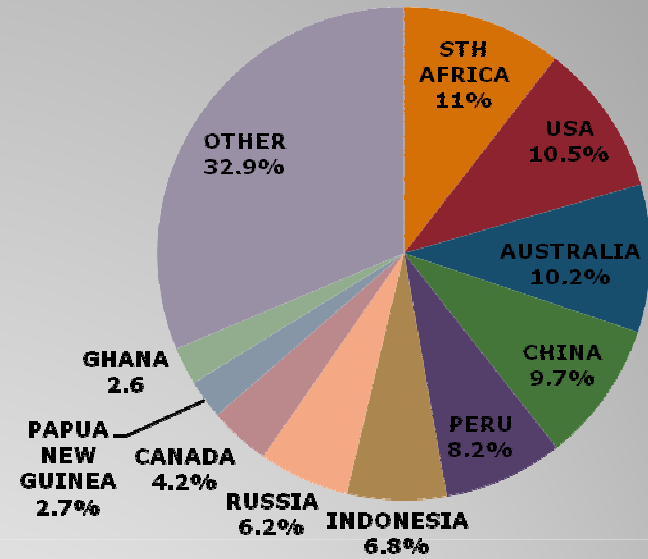
Intrusive Related Gold In Central Victoria



GOLD PRODUCTION

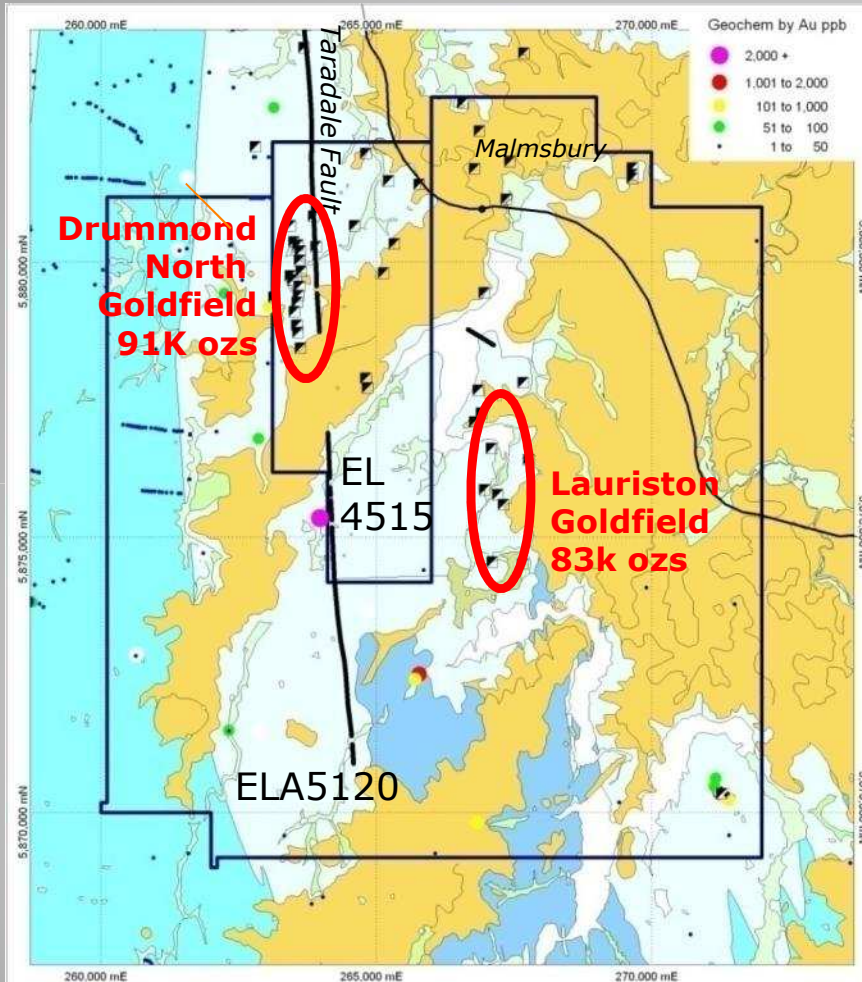


2006 World Mine Production



Gold Production by State 1840 -2002

Malmsbury Gold Project



- **Tenements consolidate goldfield**
- **Major Regional Structure**
- **Multiple** gold bearing structures – short-term targets
- **Disseminated** Au distribution
- **Granite related** mineral assemblage
- **IRGD** at depth?

Malmsbury Gold Project

Panama

Missing Link

Leven Star

Intrusive Target

Queen's Birthday

Current resource on this prospect is 104,000 ounces. Deposit is open at strike and depth.

Drummond North 91,000 oz's historic hardrock production. Gold mineralisation over 2 km area.

Image © 2008 GeoEye

Image © 2008 DigitalGlobe
elev 473 m

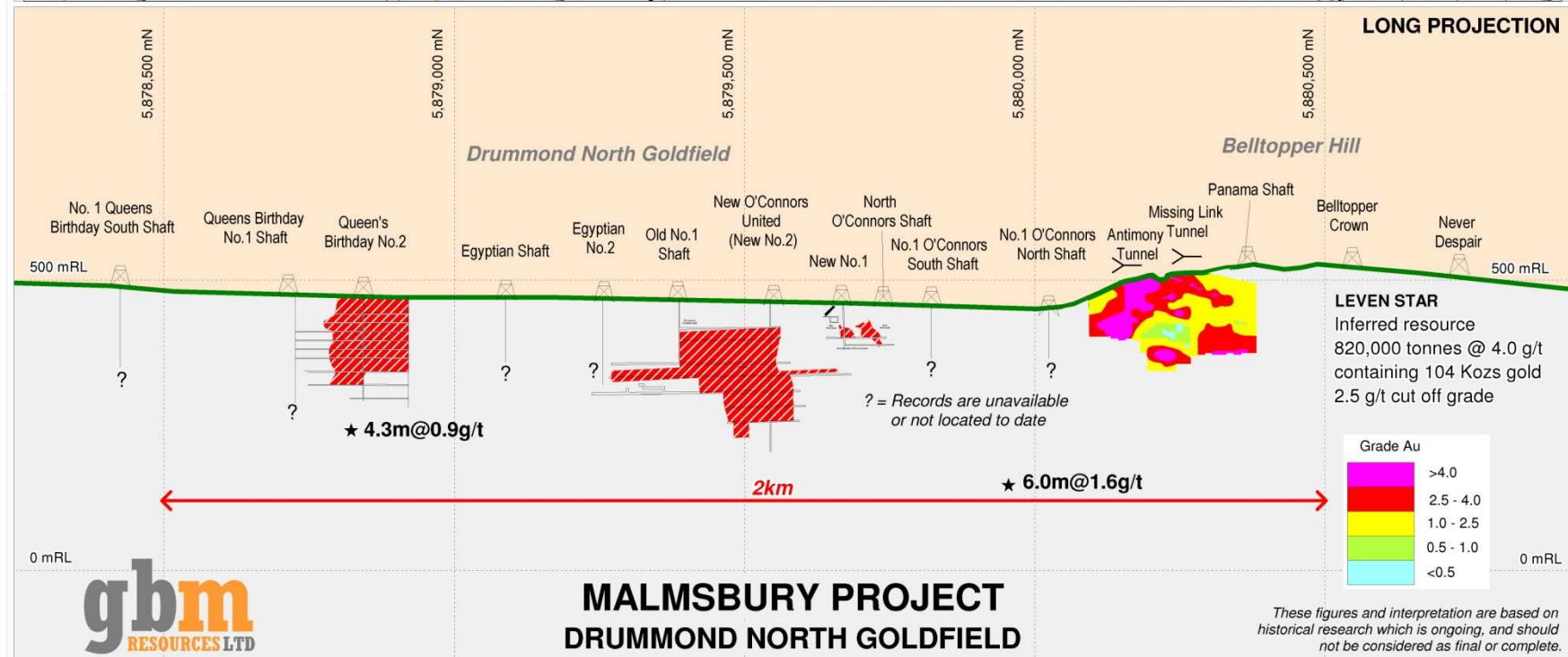
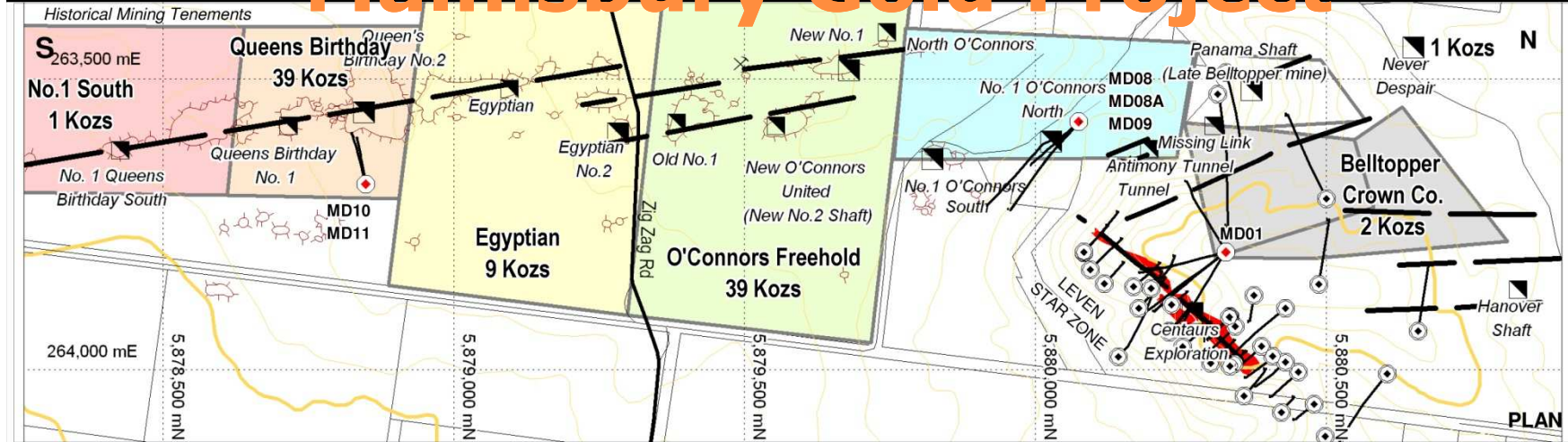
Mar 14, 2006

Eye alt 1.27 km

H:263542.34 m E:5879433.19 m S

©2008 Google™

Malmsbury Gold Project

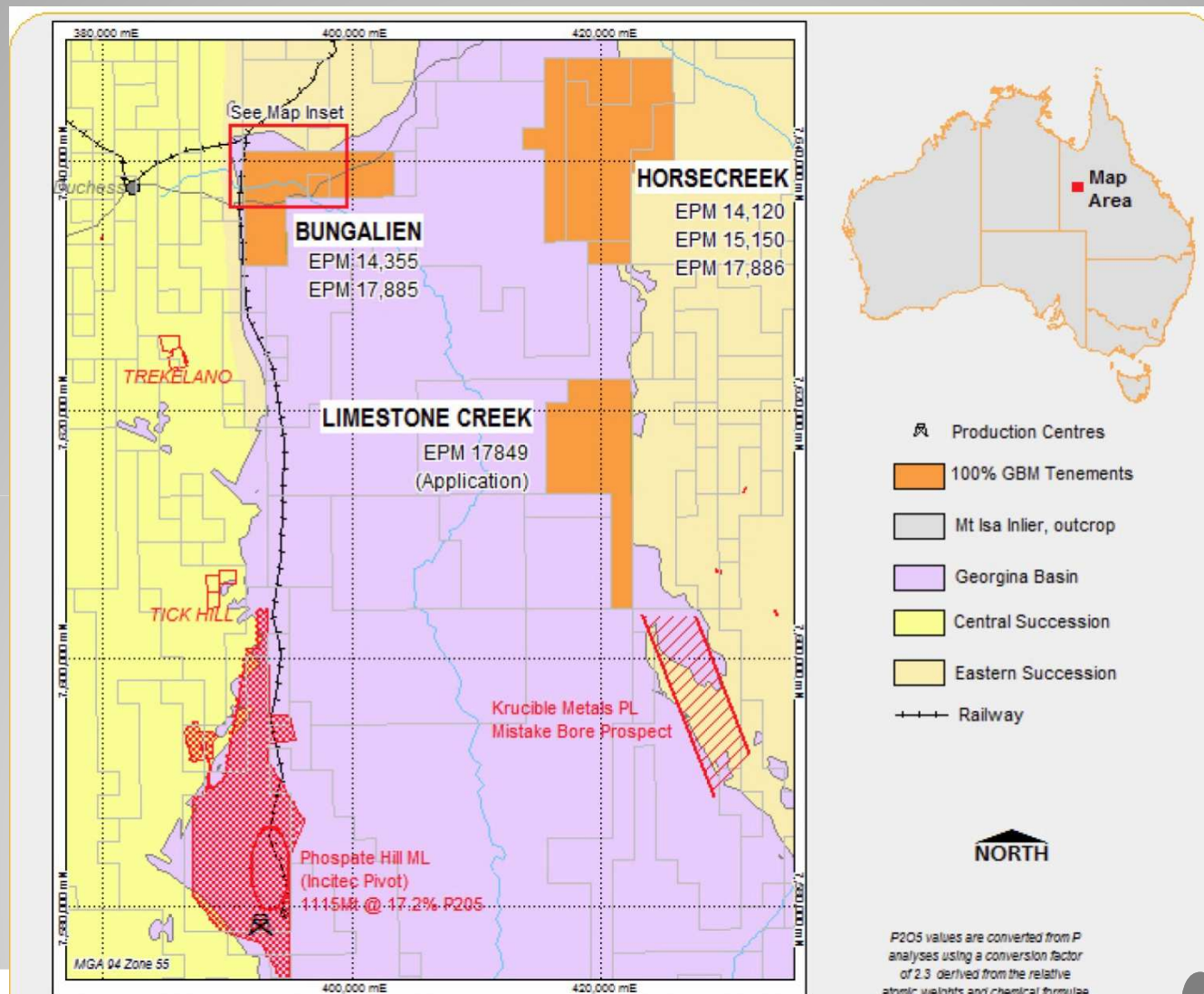


These figures and interpretation are based on historical research which is ongoing, and should not be considered as final or complete.

Other Projects

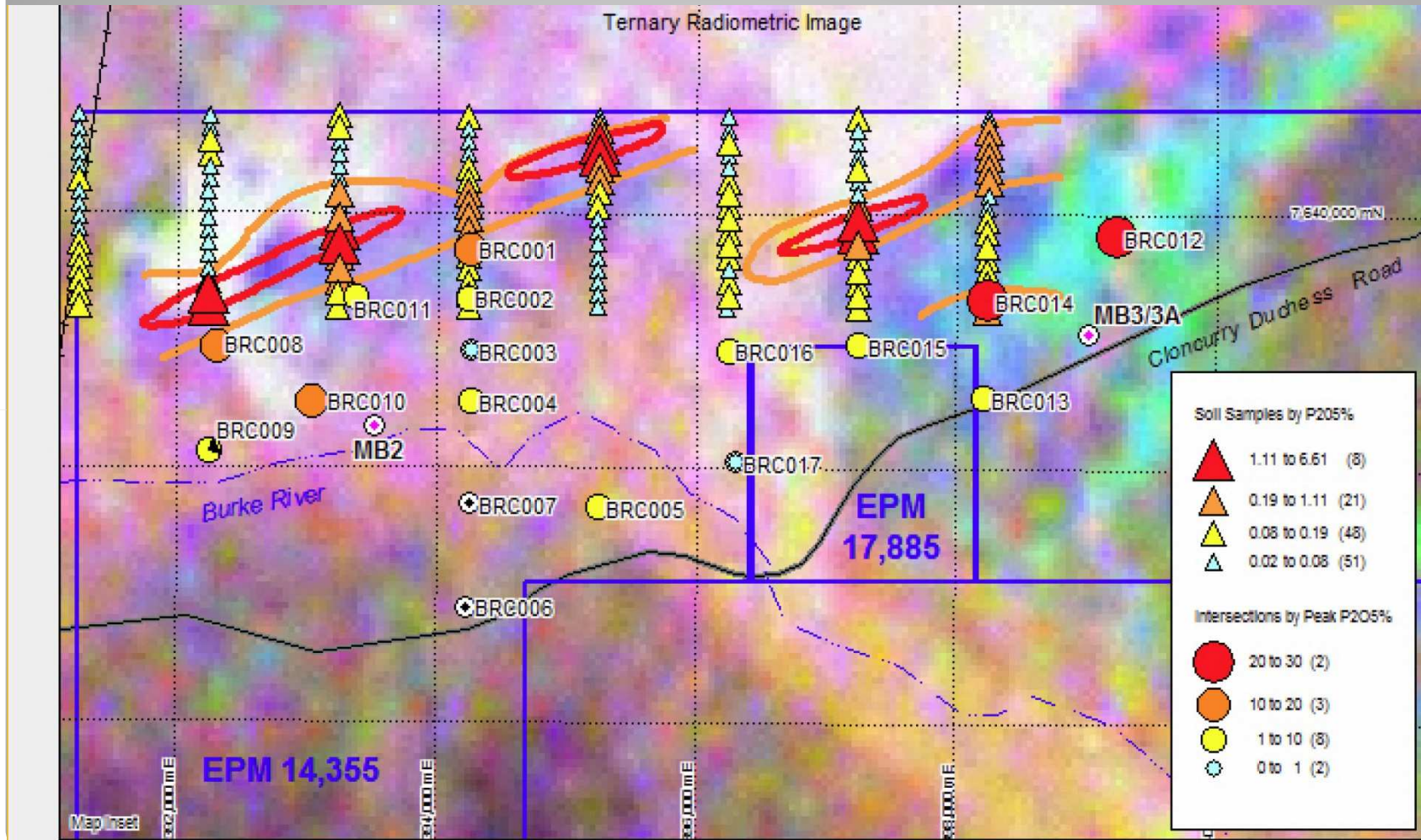
**Targeting Phosphate ,Gold and
Intrusive Related Cu-Au deposits**

Mt Isa Phosphate Project



P2O5 values are converted from P analyses using a conversion factor of 2.3 derived from the relative atomic weights and chemical formulae.

Mt Isa Phosphate Project



Dee Range Project

Mt Gordon

- porphyry Cu-Au-Mo
- 23.0m @ 0.3% Cu, 0.2 g/t Au
- 4km magnetic low

Westwood Gold Mine

- High grade quartz veins
- Intrusive host?

EPM APP
17734

Kyle Mohr

- Intrusive hosted
- Au in stockwork

EPM
17,105

Smelter Return

- 300 x 400m skarn identified
- Shallow drilling only
- 8m @ 0.3% Cu, 0.8g/t Au

EPM
16,057

Dee Copper Mine

- High grade Cu-Au veins system
- Not tested to depth

Mt Morgan Mine
8.0M ozs Au
400KT Cu

ULAM

- Extensive workings on shears and veins
- Zonation toward magnetic low
- Restricted exploration

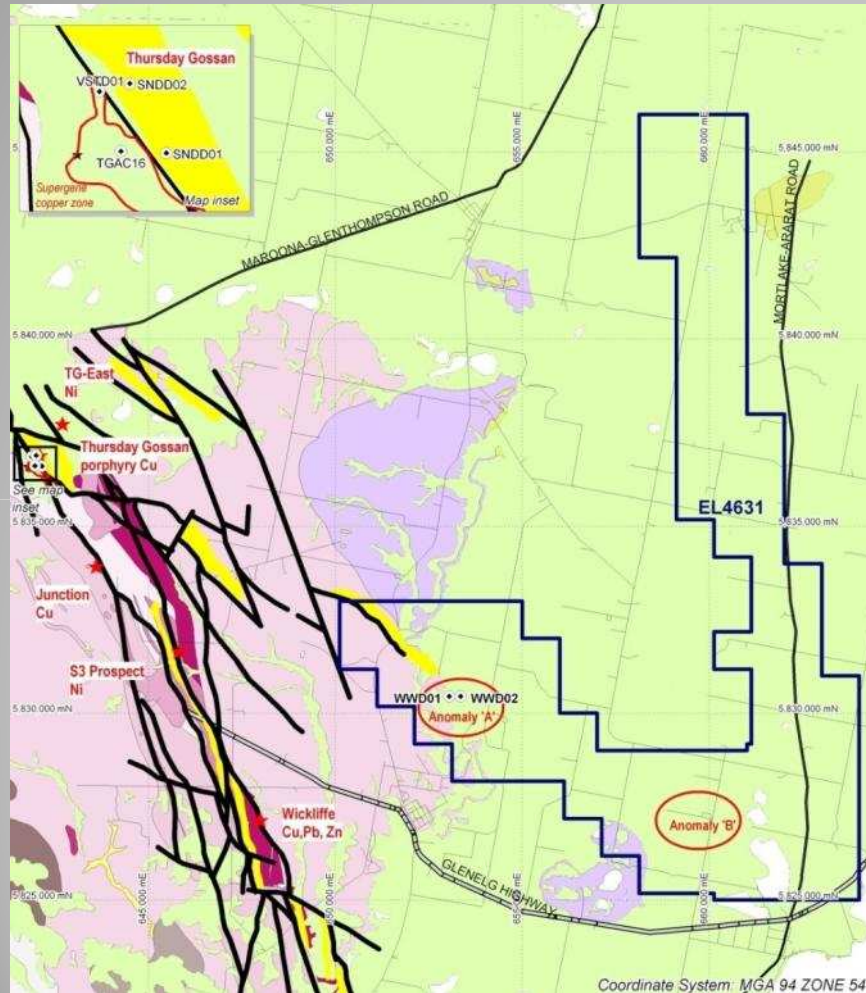
EPM
17,163

Black Range

- 4.5km stream sediment anomaly
- Au values 50 to 171ppb

50 km

Willaura – Project Summary



- Target - Porphyry Cu Au deposit (Geologically similar to Cadia, Mt Lyell and Northparkes)
- Targets defined by geochemical, geological, structural and geophysical data
- This area is one of the most under explored volcanic area in Australia
- Adjacent tenement results include 6m@3%Cu and 1.1g/t Au and 7.7m @ 4.2%Cu and 1.1g/t Au associated with the serpentinite which trends through EL4631

Key Target Summary

Isa Projects

- Brightlands – key focus for new discovery- high potential Cu-Au-U targets.
- Bungalien & Horse Creek – Manage and develop Phosphate JV.
- Mount Margaret – upgrade and rank IOCG targets. Seek JV.
- Talawanta & Grassy Bore – significant magnetic anomalies, IOCG targets. Seek JV.

Malmsbury Gold Project

- Complete data base interpretation to further define the IRGD potential
- Design and execute drilling, extend and upgrade resource base
- Vic Grant for deep hole.

Dee Range gold and copper Project

- Upgrade and rank Cu-Au targets, soils and IP follow up. Seek JV.

Willaura copper gold Project

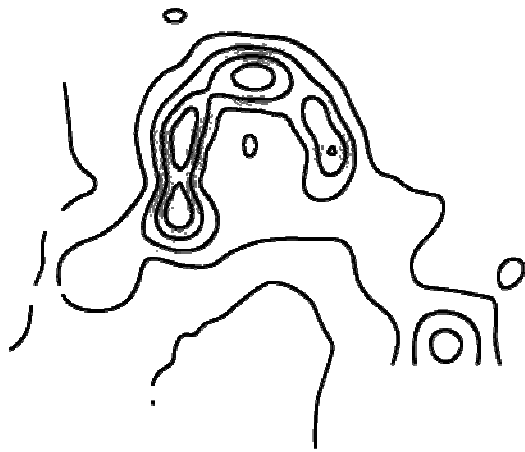
- Soil, ground magnetic and IP definition +/- or drilling of targets.
- Vic Grant

GBM Resources

On the way to achieving a new discovery

Projects are in world-class mining regions

**Targeting world class
Gold and Copper-gold systems**



Thank You