

7 July 2009



The Manager
Company Announcements
Australian Securities Exchange
Level 5, 20 Bridge Street
Sydney NSW 2000

ABN 91 124 752 745
www.gbmr.com.au

Dear Sir,

Presentation to shareholders at General Meeting

Please find attached a presentation which will be presented by the Board to shareholders after the General Meeting of shareholders today at 9am. The presentation is a summary of the Quarterly Exploration Report ending 30 June 2009 as lodged with ASX on 31 July 2009.

Yours Sincerely,

A handwritten signature in black ink, appearing to read 'Stuart Usher', with a small dot at the end.

Stuart Usher
Company Secretary

Registered Office: Level 1, 335 Churchill Ave
Subiaco WA 6008
PO Box 608
Subiaco WA 6904
T 08 9388 6899
F 08 9388 6977

Exploration Office: 10 Parker Street,
P O Box 658
Castlemaine VIC 3450
Tel / Fax 03 5470 5033

Targeting world- class Gold and Copper-gold deposits in Australia

AUGUST 2009

gbm
RESOURCES LTD

Disclaimer

- This Document is Confidential and may not be reproduced, redistributed or passed on, directly or indirectly.
- This Document is not a Prospectus nor an Offer to Subscribe for Shares.
- GBM and its Directors, employees and consultants make no representations or warranty as to the accuracy, reliability or completeness of this document, and have no liability, including liability to any person by reason of negligence of, or contained in or derived from, or for any omissions from this document, except liability under statute that cannot be excluded.
- This document contains reference to certain targets and plans of GBM which may or may not be achieved.
- The performance of GBM may be influenced by a number of factors, uncertainties and contingencies many of which are outside the control of GBM and its directors , staff and consultants.

The information in this report that relates to Exploration Results, Mineral Resources and Ore Reserves is based on information compiled by Neil Norris, who is a Member of The Australasian Institute of Mining and Metallurgy. Mr. Norris is a full-time employee of the company. Mr. Norris has sufficient experience which is relevant to the style of mineralisation and type of deposit under consideration and to the activity which he is undertaking to qualify as a Competent Person as defined in the 2004 Edition of the 'Australasian Code for Reporting of Exploration Results, Mineral Resources and Ore Reserves'. Mr. Norris consents to the inclusion in the report of the matters based on his information in the form and context in which it appears.

About GBM

ASX code: GBZ

Listed : Oct 07 – initial raise \$3.4 m

Board : Peter May – Non Executive Chairman – Banking and Corporate services.
Peter Thompson – M D > 30 years in the resource sector Finance and BD roles.
Cameron Switzer – Non Executive > 20 years as a geologist.
Neil Norris - Exploration Director >30 years exploration and mining experience.

Strategy:

“Discover new deposit which has the potential to be commercially developed adding significant value to the Company and shareholders.”

Web page: www.gbmr.com.au

About GBM

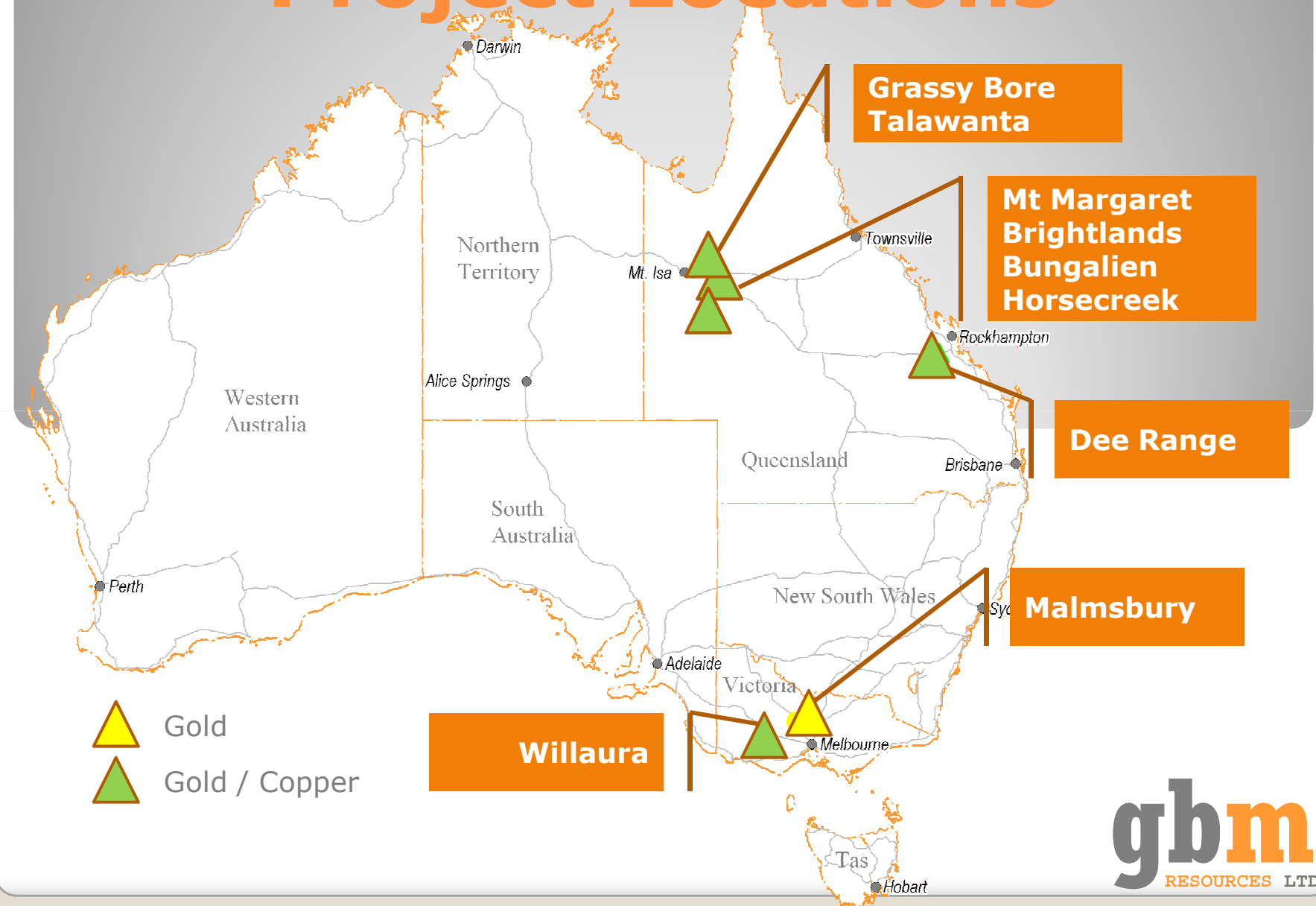
CAPITAL STRUCTURE ('000) :

ORD Shares	Total	Quoted	comment
Current	65,759	40,184	25,575 escrow Oct/09
Entitlement offer	43,839	43,839	2: 3 @ 2 cents
Placement	25,000	25,000	Clients of Cygnet Capital
Other	10,000	10,000	as per NOM
Total	144,598	108,573	

MV @ 10 cents \$ 14.5m

OPTIONS	40,379	40,379	25 cent/ 30 June 2010
	3,000	nil	unlisted 25 cent/ 30 June 2010
	20,000	nil	unlisted 22 cent/ 30 June 2010

Project Locations



2009 Programme

Brightlands Copper Gold Project

- 1500m RC at Tiger prospect – confirm extent of Cu mineralisation.
- 1000m RC at Tambourine – confirm extent of Au and Cu mineralisation.
- Results by end of Sept. Further work planned.

Malmsbury Gold Project

- Geology to date supports potential for bulk tonnage gold deposit.
- 1000m diamond hole scheduled for November. Partly funded by Vic Gov grant scheme.

Other

- Complete field work at Dee Range and consolidate.
- Seek partner to progress phosphate development.
- Look to enhance its other projects in the Mt Isa region.

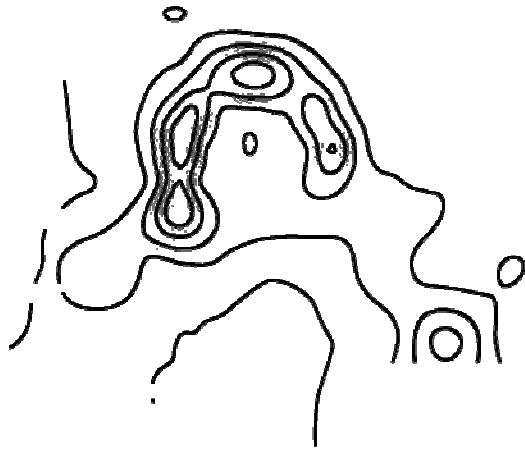
Out Comes to drive value

- High potential for mineral discovery on Tiger and Tambourine. Have another 4 high priority prospects on the Brightlands project.
- The deep hole at Malmsbury Gold Project will examine for bulk tonnage Intrusive Related Gold System.
- Secure JV partners on the Dee Range Cu-Au project and the phosphate assets.
- JV or vend non core projects in the Isa Region .

Mt Isa Copper Gold Projects



'nothing else on earth measures up'



Brightlands Prospects

Mary Kathleen
• 8,882t U₃O₈

Rocklands Project
Cu

Tiger

Southern Gold

Milo & Milo West

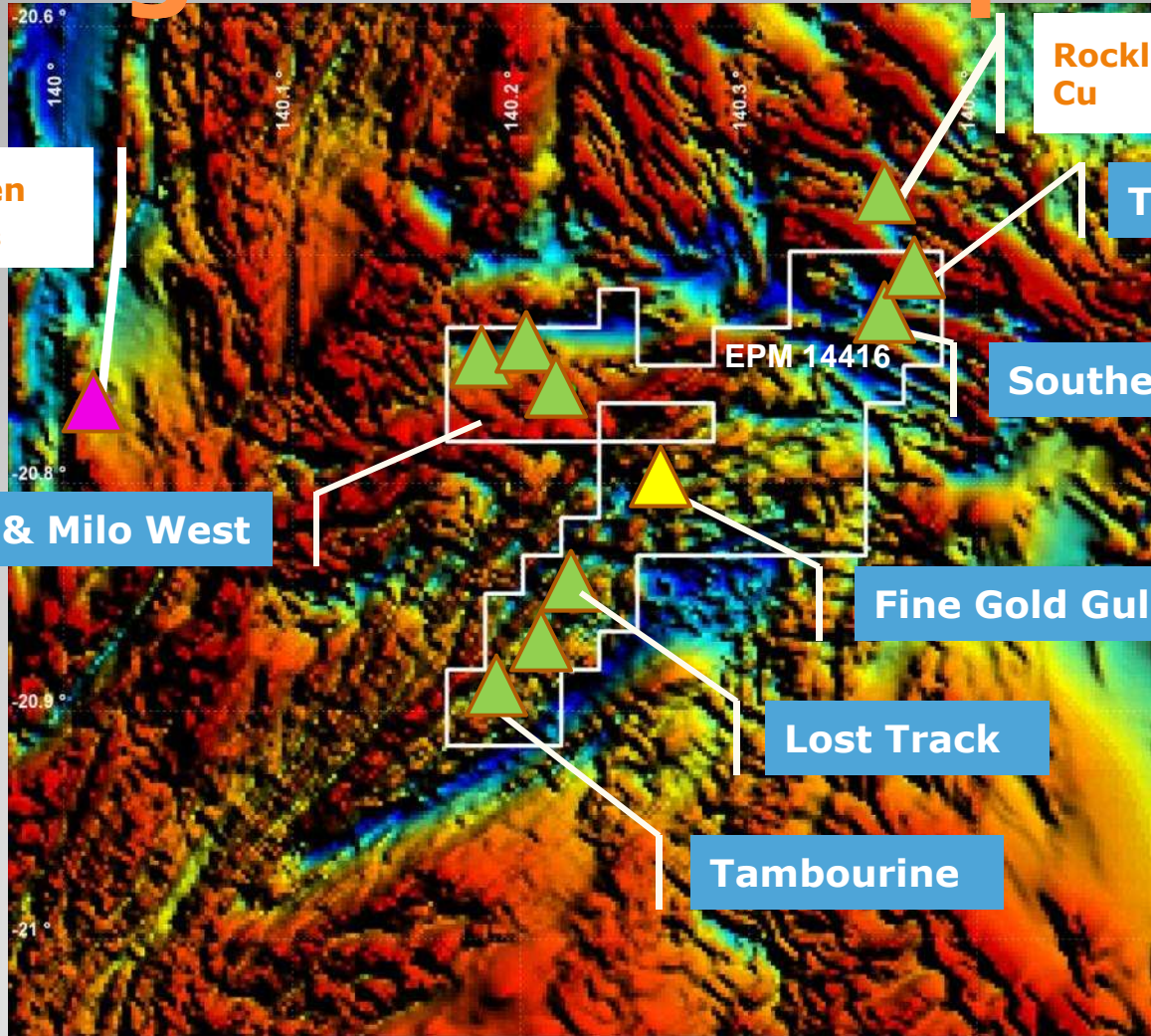
Fine Gold Gully

Lost Track

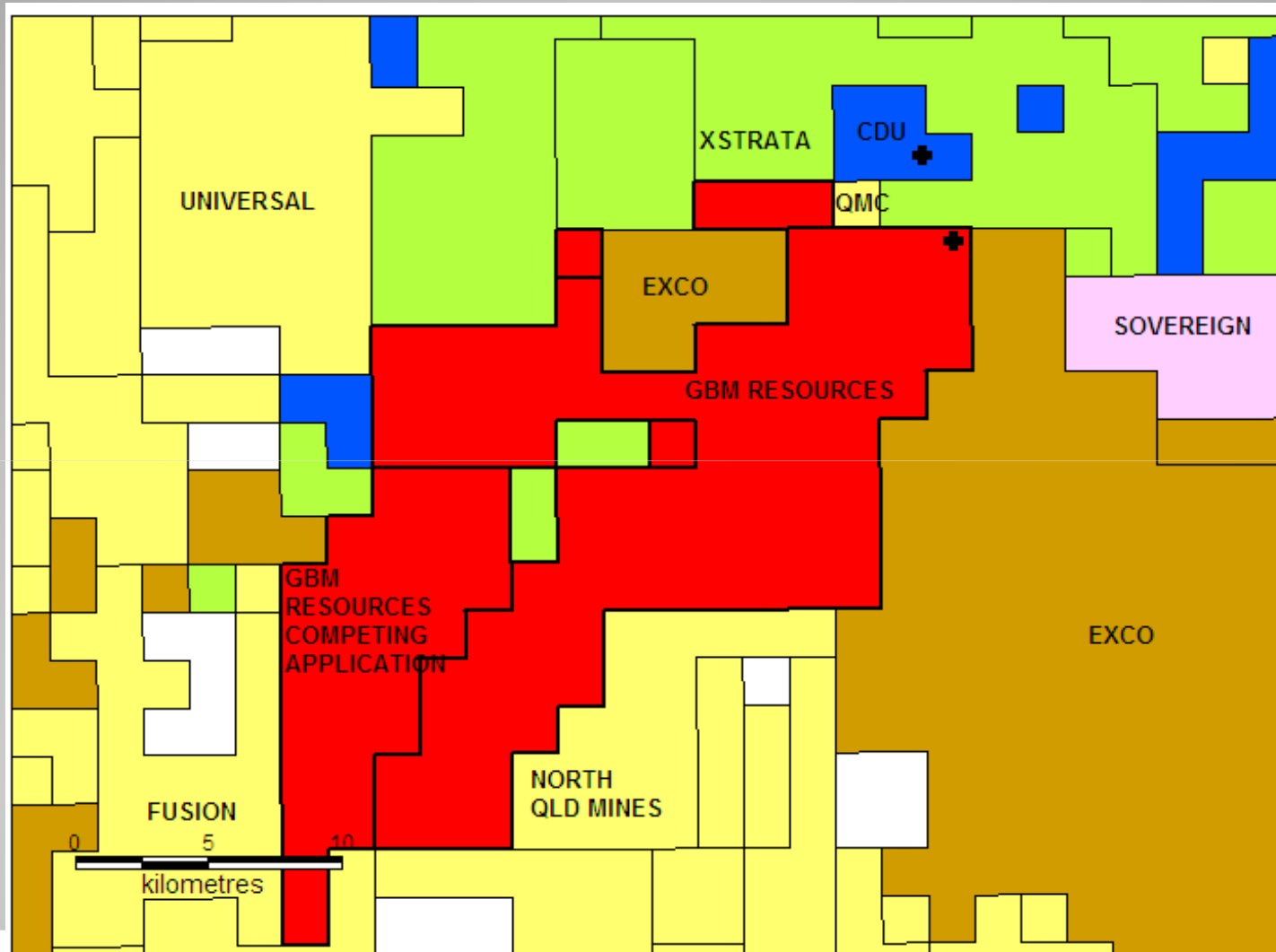
Tambourine

EPM 14416

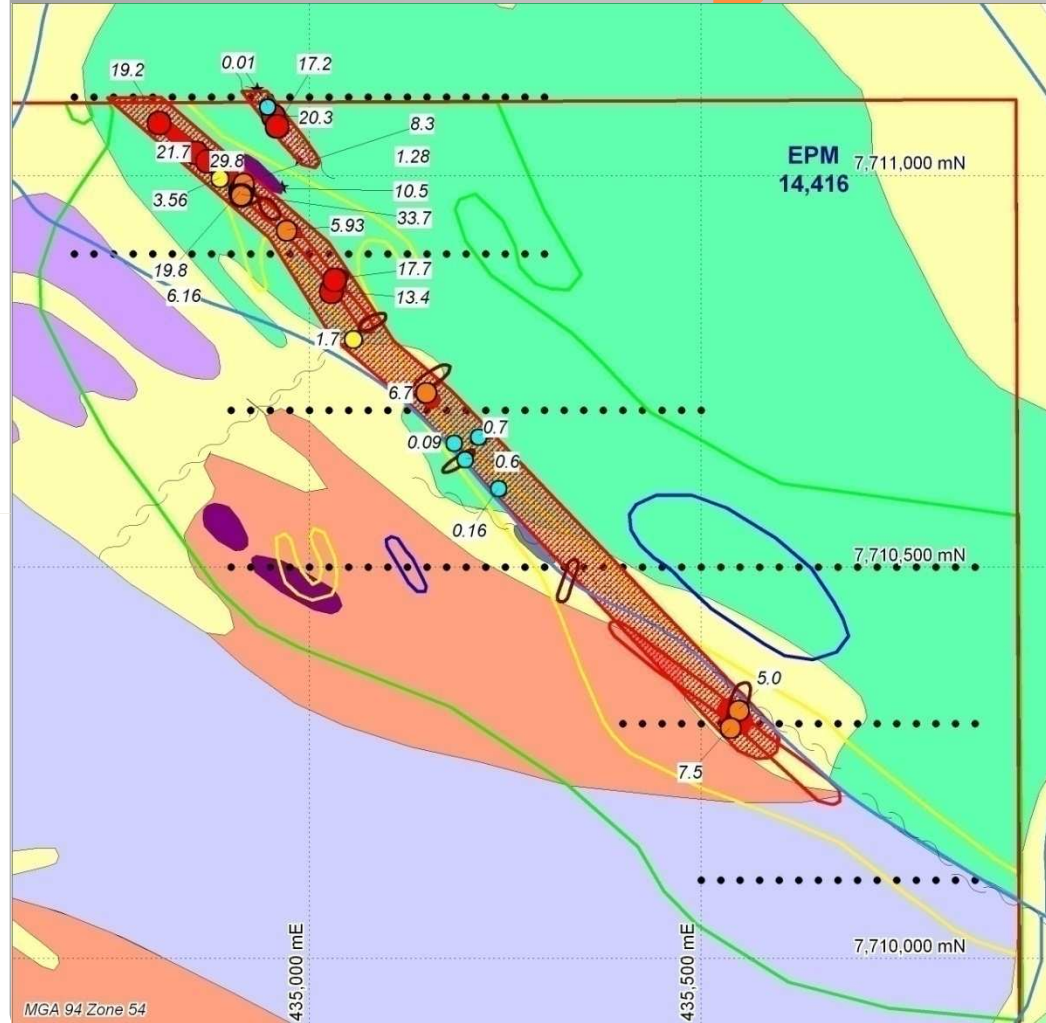
- U
- Cu-Au
- Au



Brightlands Tenement Position



Brightlands



Key Tiger Rock Assays by Cu%

- 10 to 33.7%
- 5 to 10%
- 1 to 5%
- 0.1 to 1%

Soil Cu ppm Countour

- 378 to 820 ppm
- 125 to 378 ppm
- 20 to 125 ppm
- 0 to 20 ppm

Target Zone

- Mineralisation
- Interpreted Mineralisation

Rock Type

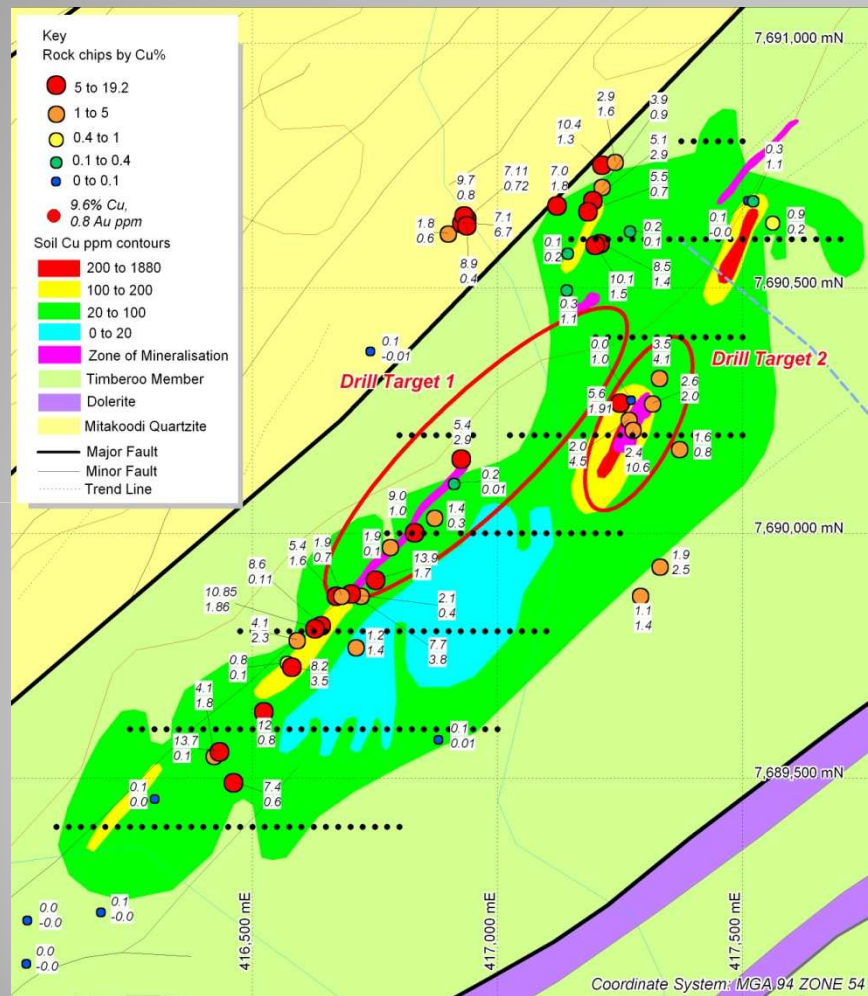
- Alluvium
- Quartz Vein
- Calcite Vein
- Jaspillite
- Calc Silicate
- Ironstone
- Shale
- Metabasalt
- Quartzite
- Creek
- Costean
- Soil Sample
- Shear Zone

TIGER GEOCHEM AND SAMPLES

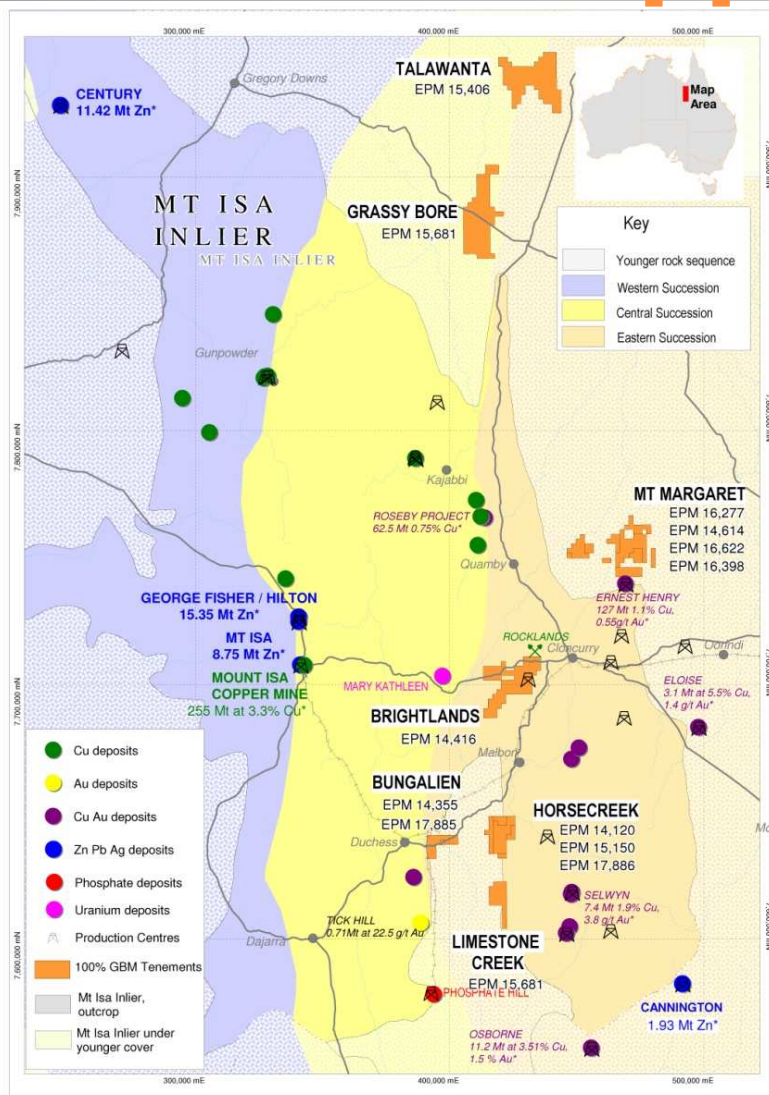


Brightlands

TAMBOURINE GEOCHEM AND SAMPLES



Mt Isa Copper Gold Projects



* All figures quoted from NW QLD Mineral Province Report, Old Government DME, Nov 2000

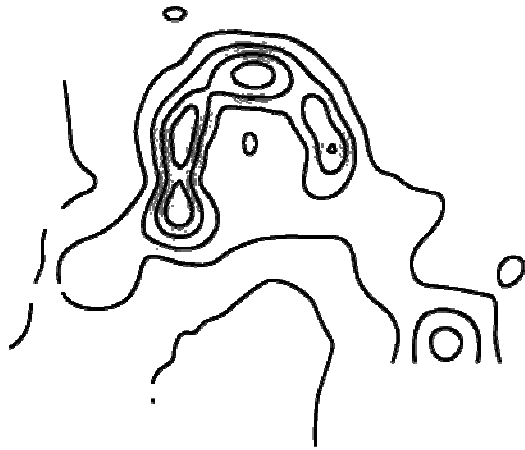
Ten Titles, Four Major Projects;

- Talawanta & Grassy Bore: IOCG
- Mt Margaret Group: IOCG
- Brightlands: Au, Cu-Au-U
- Bungalien, Malbon2 & Horse Creek: IOCG, P

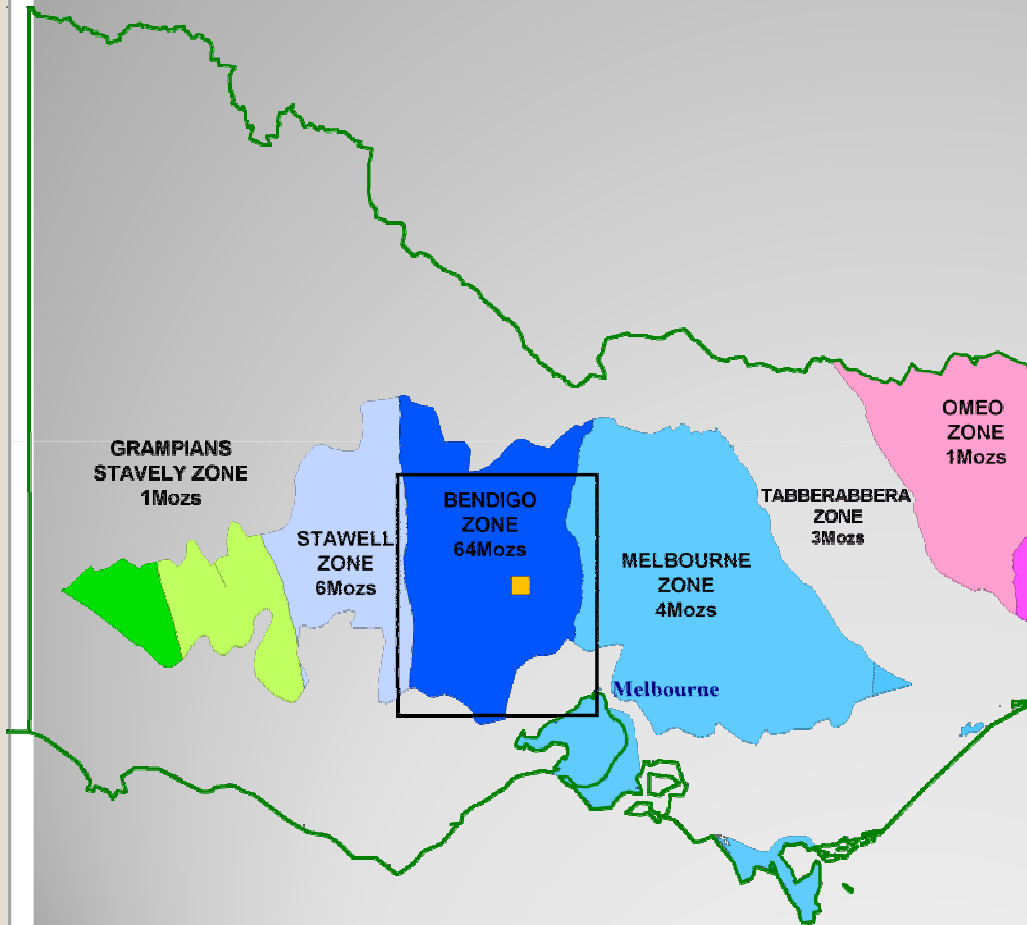


Malmsbury Gold Project

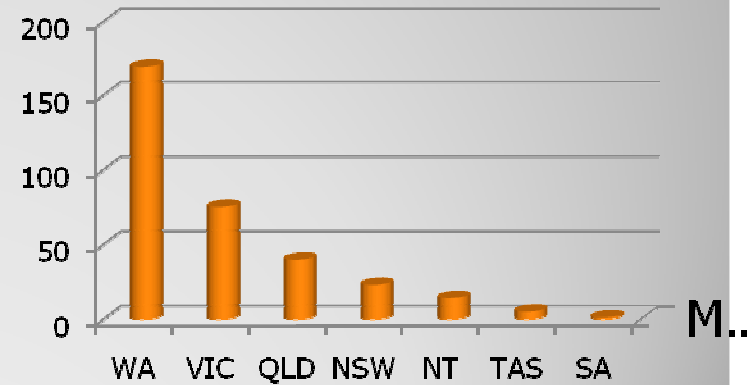
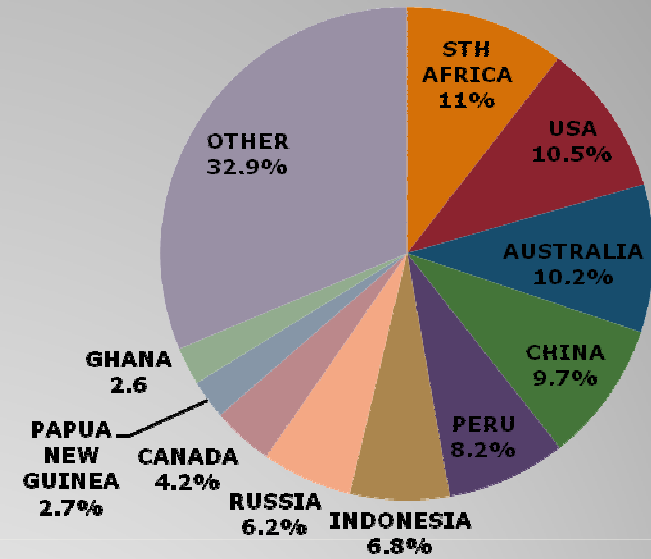
Intrusive Related Gold In Central Victoria



GOLD PRODUCTION



2006 World Mine Production



Gold Production by State 1840 -2002

Malmsbury Gold Project

Panama

Missing Link

Leven Star

Intrusive Target

Queen's Birthday

Current resource on this prospect is 104,000 ounces. Deposit is open at strike and depth.

Drummond North 91,000 oz's historic hardrock production. Gold mineralisation over 2 km area.

Image © 2008 GeoEye

Image © 2008 DigitalGlobe
elev 473 m

Mar 14, 2006

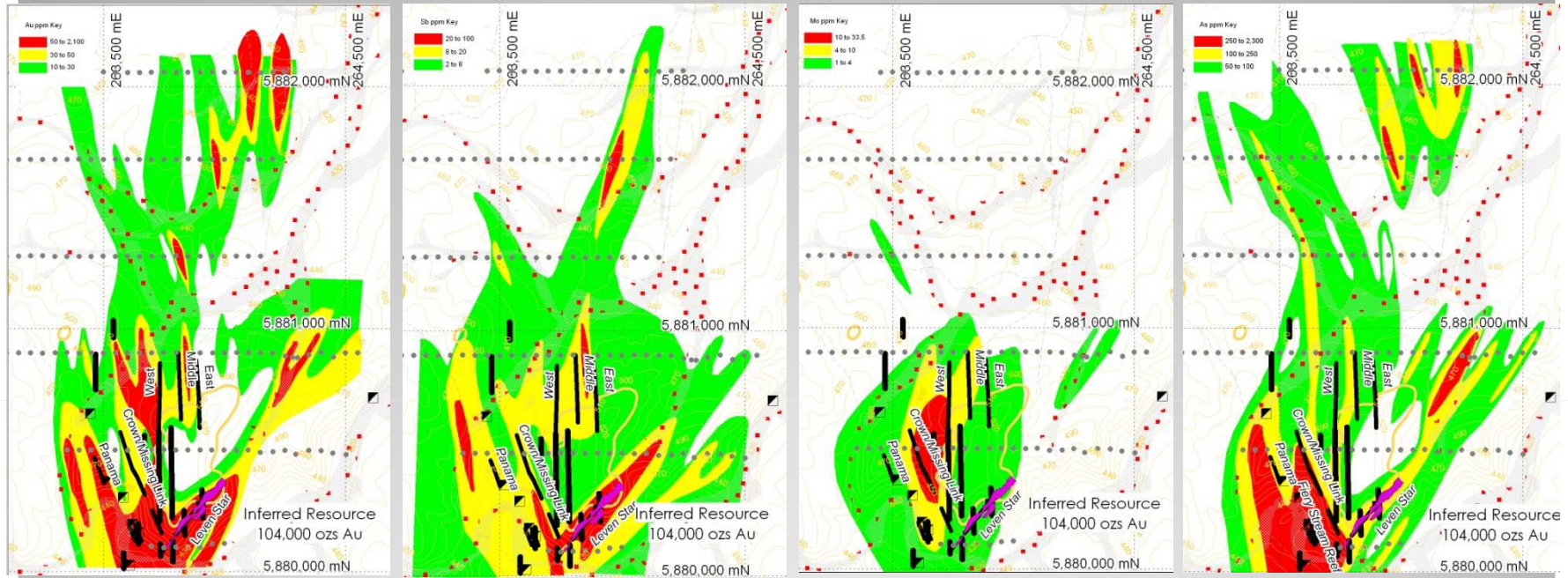
Eye alt 1.27 km

H:263542.34 m E:5879433.19 m S

©2008 Google

Malmsbury Gold Project

1km



Au

Sb

Mo

As

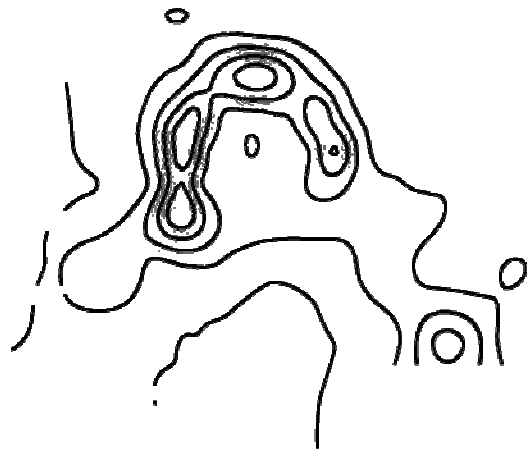
Key

- Alluvium
- Alluvial pits

Belltopper Hill Soil Sample Results

Other Projects

Cu-Au Intrusive Related Deposits



Dee Range Project

Mt Gordon

- porphyry Cu-Au-Mo
- 23.0m @ 0.3% Cu, 0.2 g/t Au
- 4km magnetic low

Westwood Gold Mine

- High grade quartz veins
- Intrusive host?

EPM APP
17734

Kyle Mohr

- Intrusive hosted
- Au in stockwork

EPM
17,105

Smelter Return

- 300 x 400m skarn identified
- Shallow drilling only
- 8m @ 0.3% Cu, 0.8g/t Au

EPM
16,057

Dee Copper Mine

- High grade Cu-Au veins system
- Not tested to depth

Mt Morgan Mine
8.0M ozs Au
400KT Cu

ULAM

- Extensive workings on shears and veins
- Zonation toward magnetic low
- Restricted exploration

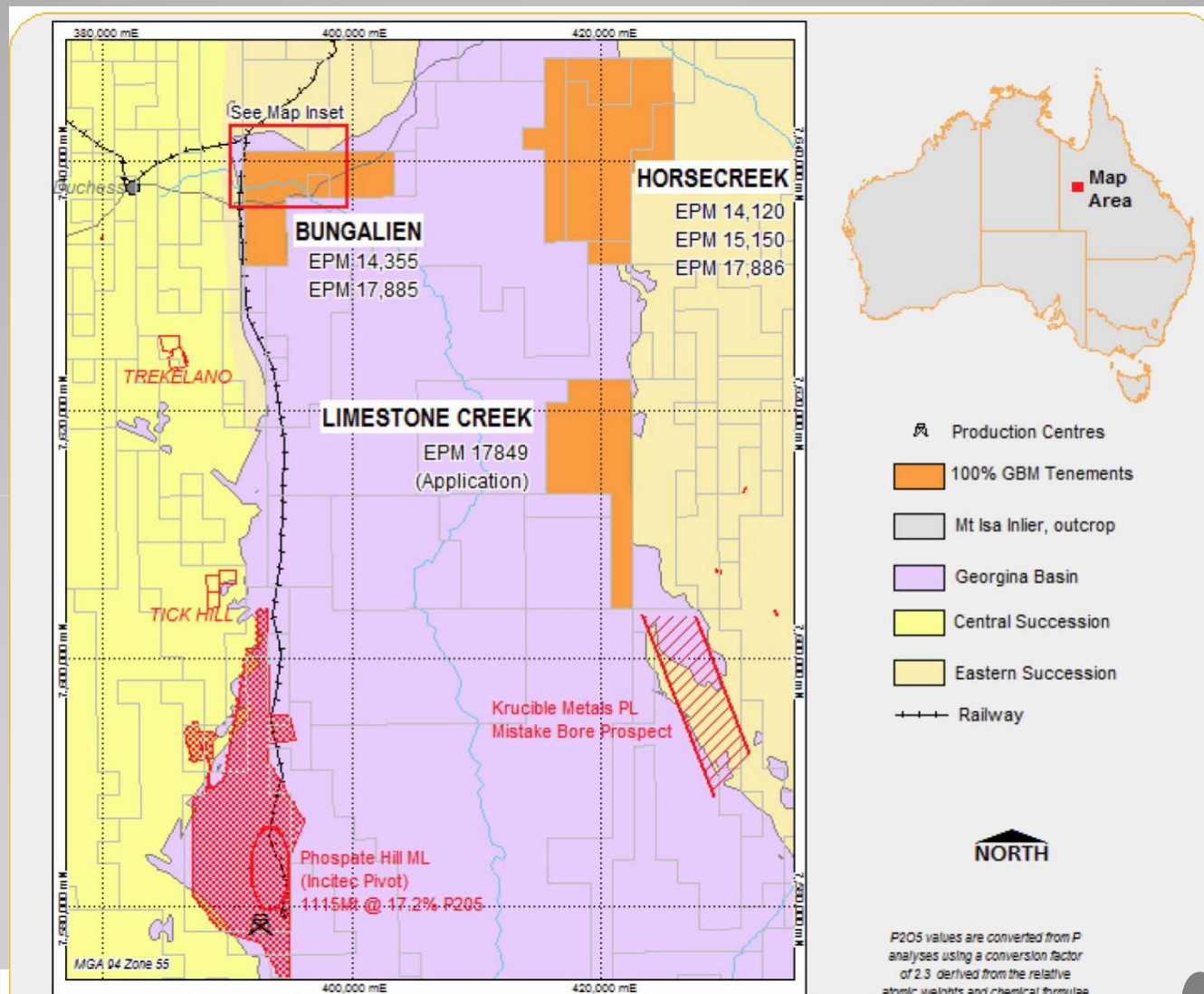
EPM
17,163

Black Range

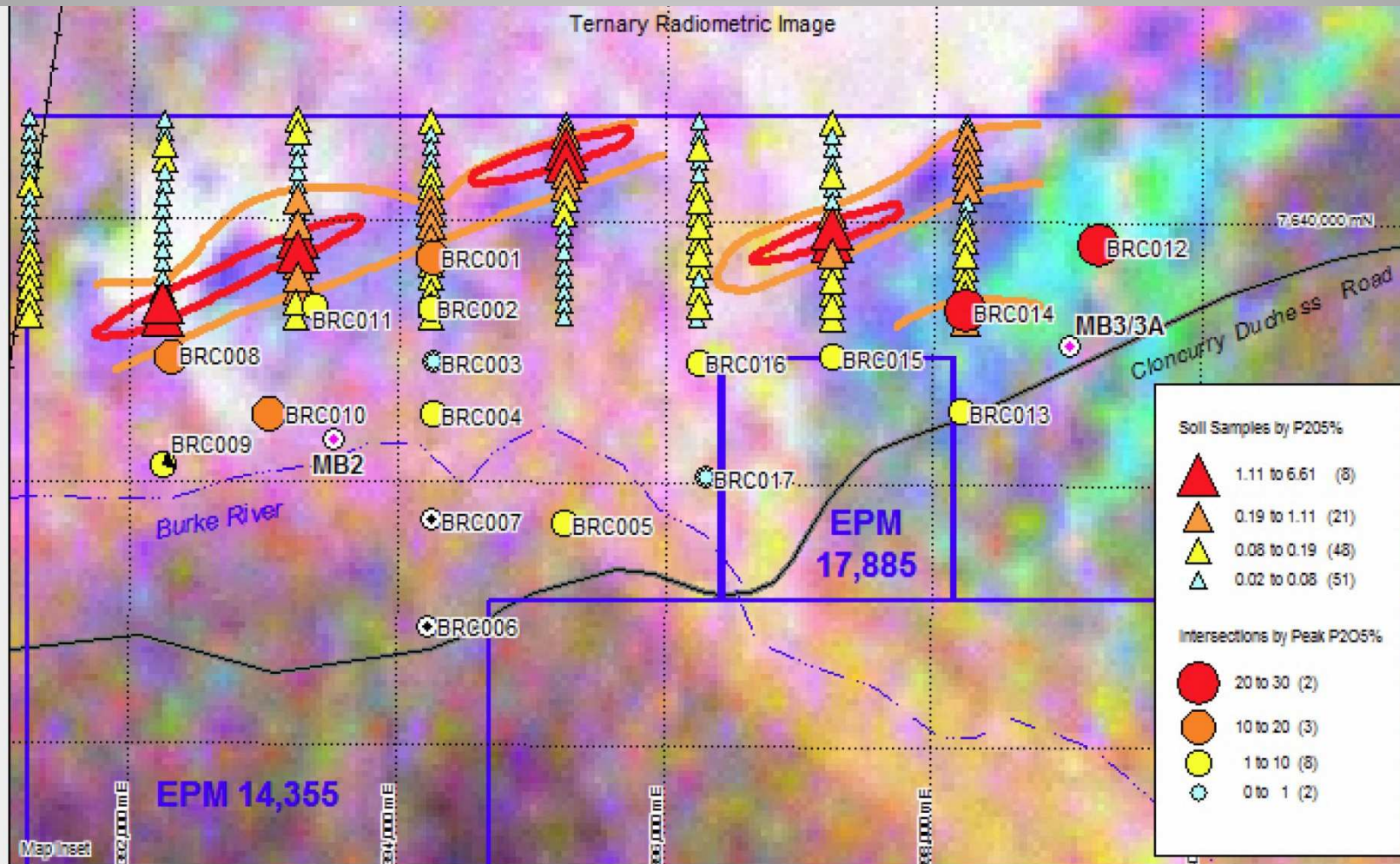
- 4.5km stream sediment anomaly
- Au values 50 to 171ppb

50 km

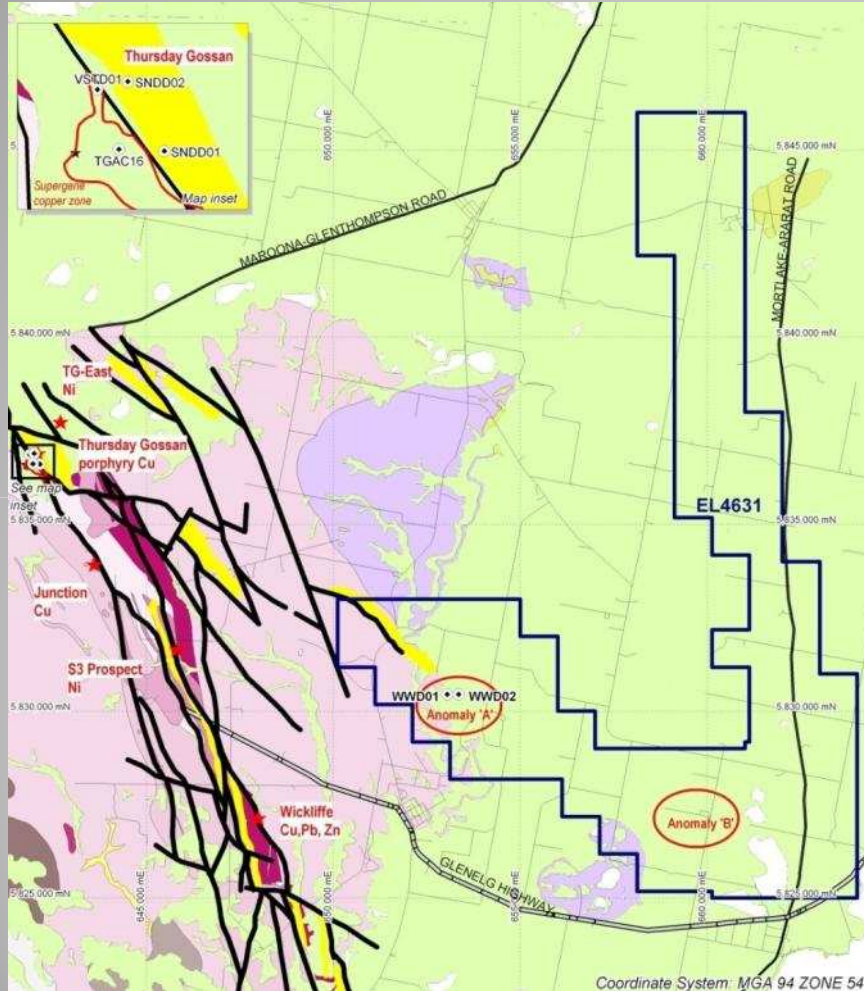
Mt Isa Phosphate Project



Mt Isa Phosphate Project



Willaura – Project Summary



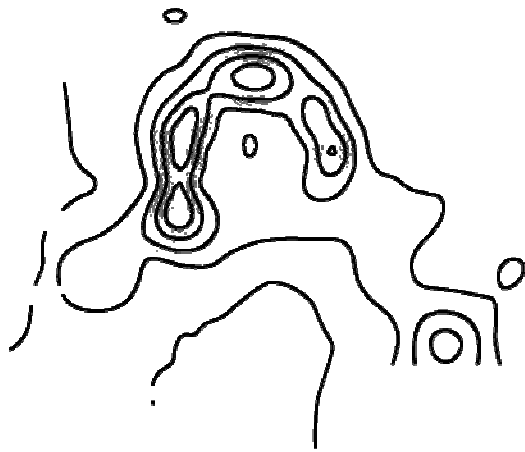
- Target - Porphyry Cu Au deposit (Geologically similar to Cadia, Mt Lyell and Northparkes)
- Targets defined by geochemical, geological, structural and geophysical data
- This area is one of the most under explored volcanic area in Australia
- Adjacent tenement results include 6m@3%Cu and 1.1g/t Au and 7.7m @ 4.2%Cu and 1.1g/t Au associated with the serpentinite which trends through EL4631

GBM Resources

On the way to achieving a new discovery

Projects are in world-class mining regions

**Targeting world class
Gold and Copper-gold systems**



Thank You