

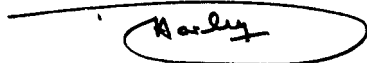
**DRILLING COMMENCES AT EMMIE BLUFF COPPER PROSPECT,
MOUNT GUNSON, SA**

Diamond drilling has commenced at Emmie Bluff Prospect, in the northern part of the 1,470 square km Mount Gunson Project in South Australia.

The hole in progress, MGD 55, is designed to test the 400m wide peak zone of a gravity geophysical anomaly first identified by Mount Isa Mines (MIM) in the early 1980s. It is one of the largest accumulations of hydrothermal iron oxide in basement rocks of the Olympic copper-gold province in South Australia, measuring approximately 4 kilometres across and in the mid to late 1980s was tested with 3 widely spaced drill holes, SAE 3, 4 and 6 (Figure 1). All of these holes intersected extensive hematite alteration with associated sub economic copper-gold mineralisation, the best intersection being 15 m @ 1.2% copper and 0.03 g/t gold between 937-952 m in hole SAE 6.

The present hole is sited on new, more detailed gravity geophysical data collected earlier this year, the interpretation of which suggests that old MIM hole SAE 3 was close to but did not intersect the gravity peak zone. This zone is interpreted as a massive hematite pipe which may contain higher grade copper mineralisation than that intersected by previous drilling. Basement in hole SAE 3 was intersected at 752 m and the top of the target zone should occur at a similar depth in the present hole.

The drilling is being funded by Noranda Pacific Pty Limited (Noranda), a company within the Xstrata Copper Business Unit. Noranda has the right to earn a 51% interest in the Mount Gunson Copper Project by spending \$3.5 million on exploration by 15th June 2010. At the end of March 2009, Noranda had spent \$2.2 million.



D N HARLEY
MANAGING DIRECTOR

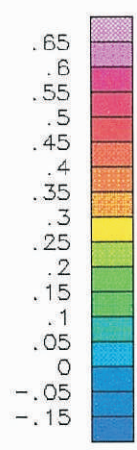
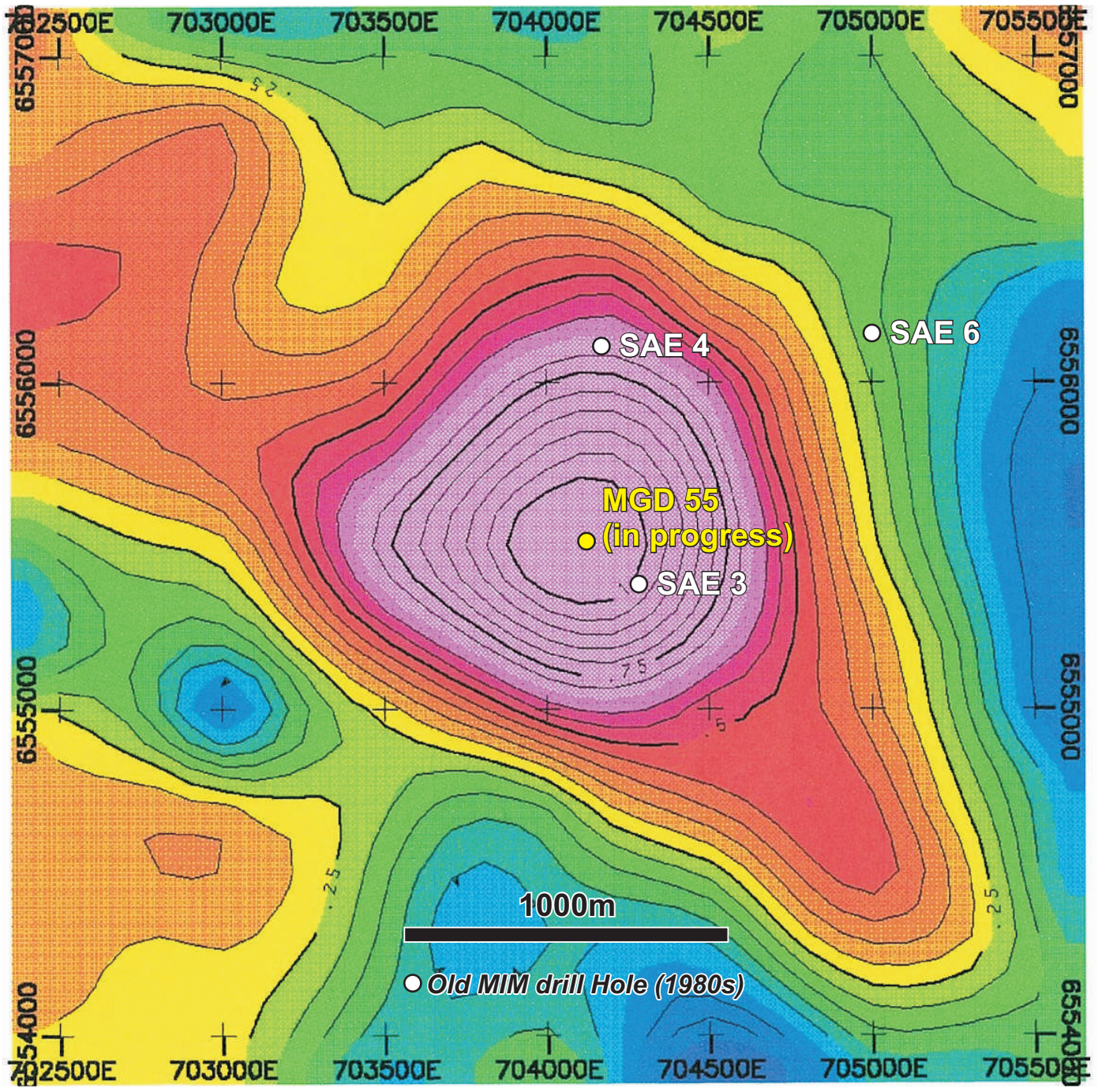
Figure 1 Emmie Bluff Residual Gravity and Drilling

Investor Enquiries:

Telephone: 08 9226 3130
Facsimile: 08 9226 3136
Email: enquiries@gunson.com.au
Website: www.gunson.com.au
Address: PO Box 1217,
West Perth, Western Australia, 6872

ATTRIBUTION

The information in this report that relates to exploration results, mineral resources and ore reserves is based on information compiled by Mr D N Harley, who is a Fellow of the Australasian Institute of Mining and Metallurgy. Mr Harley has sufficient experience which is relevant to the style of mineralisation and type of deposit under consideration and to the activity which he is undertaking to qualify as a Competent Person as defined in the 2004 Edition of the 'Australasian Code for Reporting of Exploration Results, Mineral Resources and Ore Reserves'. Mr Harley consents to the inclusion in the report of the matters based on his information in the form and context in which it appears.



Gunson Resources Ltd	
Mount Gunson Copper Project South Australia Emmie Bluff Prospect Residual Gravity Anomaly and Drilling	
File : Emmie Bluff Residual Gravity_Drilling.cdr	
Date : 22 Jun 2009	Figure 1