



JACKSON
MINERALS LIMITED

ASX Code – JAK

ASX Code – SIM



Scimitar
RESOURCES LIMITED



PROFESSIONAL PUBLIC RELATIONS - SHOWCASE – March 2009



Merger

“... the Merged Group will have a greater global presence, controlling a suit of uranium projects that are diversified in terms of stage of development and location.”

Timing of Merger Activity

| <i>Date</i> | <i>Activity</i> |
|------------------|---|
| • 18 December 08 | Merger announced JAK Suspended from Trading |
| • 13 March 09 | Scheme defined (7.5 JAK : 1 SIM) |
| • 16 March | Documents lodged with ASIC (2-3 wk approval process) |
| • 8 April | First Court Hearing proposed |
| • Early-April | Notice to JAK Shareholders (28 day notification period) |
| • Early-May | JAK Shareholder Meeting |
| • Early-May | Second Court Hearing – Merger complete |



Corporate Overview

Financials

SIM

JAK

Merged Group

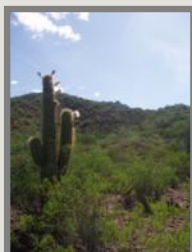
| | | | |
|-------------------------------------|------------|-------------|--------|
| • shares on issue | 50.1 M | 99.5 M | 63.4 M |
| • unlisted options | 5.3 M | 21.8 M | 8.14 M |
| • current share price | 19.0 cents | 3.1 cents * | |
| • market capitalisation | \$9.5 M | \$3.1 M | |
| • cash (at 31 th Dec 08) | \$1.3 M | \$0.57 M | |
| • investments | \$0.3 M | \$0.25 M | |
| • top 20 shareholders | 46 % | 30 % | |
| • Mega Uranium | 10 % | | 8 % |

Directors

| | |
|----------------------|---------------|
| • Executive Chairman | Tony Sage |
| • Managing Director | Terry Topping |
| • Executive Director | Brett Smith |
| • Non-Exec Director | Kent Hunter |



Uranium Focus



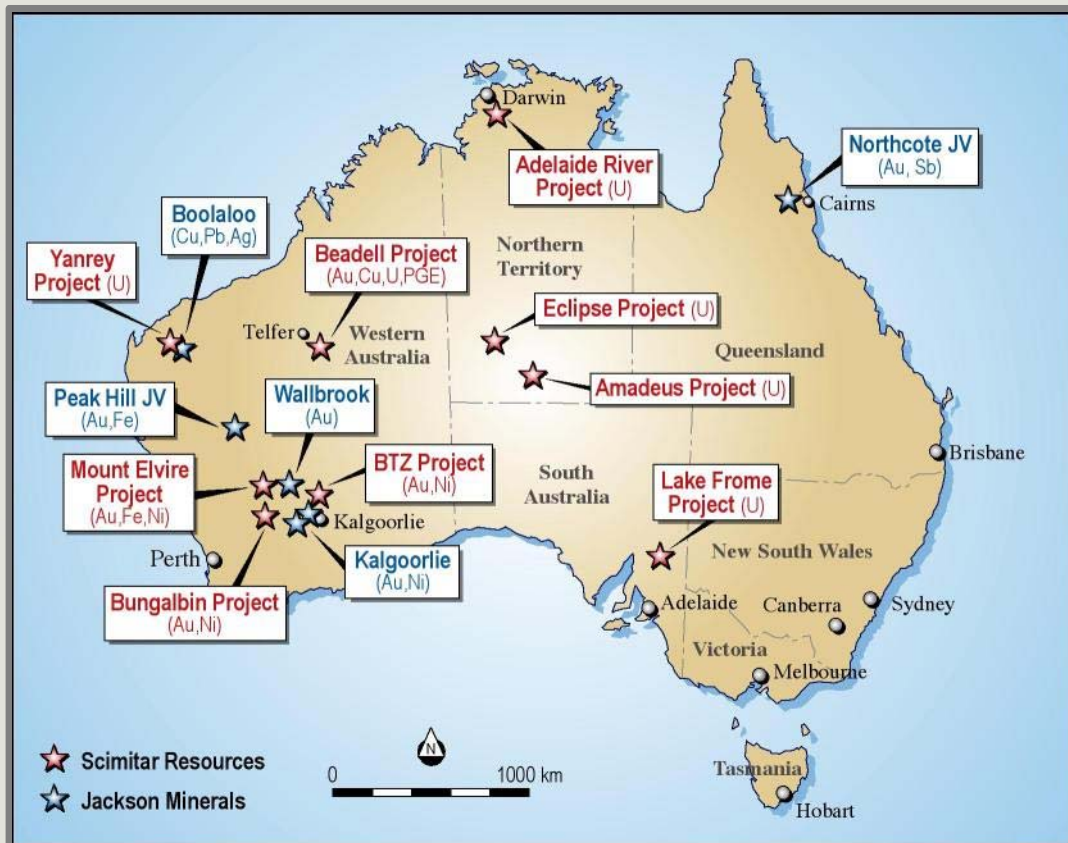
Australia and Argentina's Leading Junior Uranium Explorer

Strategy

To develop Australian resources for export; and

To become the primary supplier of uranium to the growing Nuclear Power Generation Industry in South America.

Combined Projects



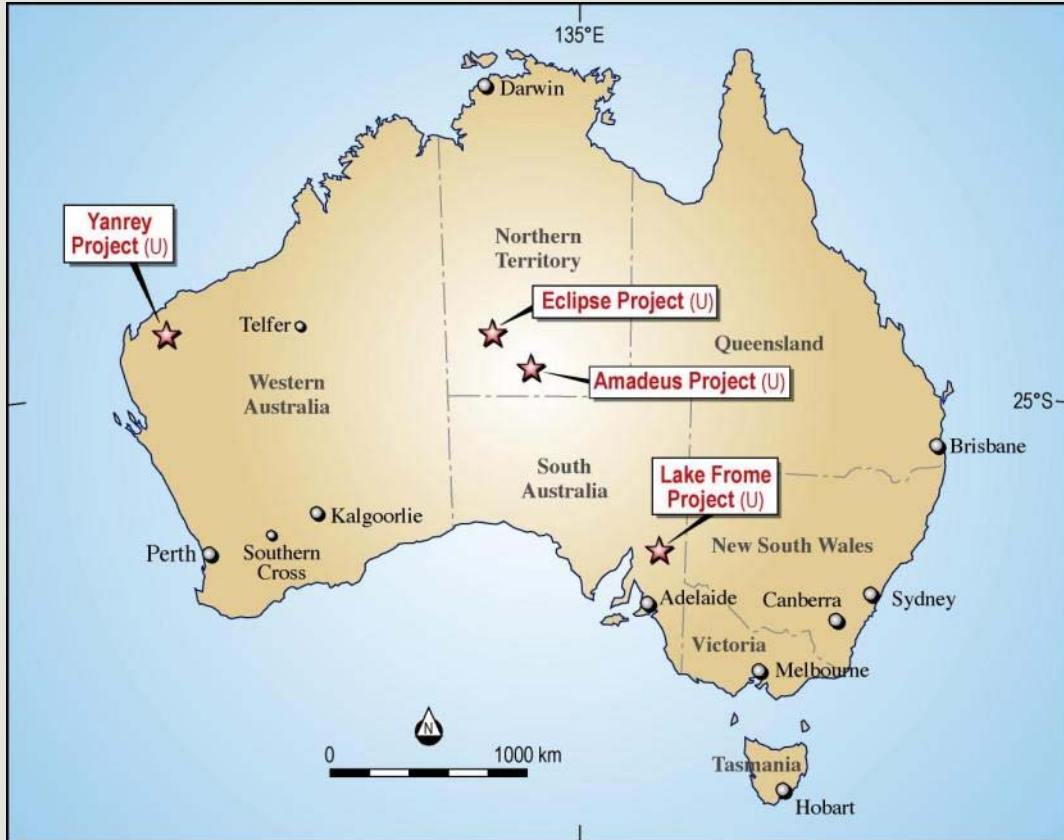
- ★ Jackson Minerals Limited – ASX JAK
- ★ Large Argentinean Uranium Deposits
- ★ Fertile Uranium Exploration Ground
- ★ Mature Nuclear Power Generation Industry



- < Scimitar Resources Ltd – ASX SIM
- < Advanced Uranium Projects – Including Resources
- < \$6.2 million JV with Korean Consortium
- < 17,000 sq km of highly prospective uranium tenure.



Core Uranium Projects



- < Scimitar Resources Ltd – ASX SIM
- < Advanced Uranium Projects – Including Resources
- < \$6.2 million JV with Korean Consortium
- < 17,000 sq km of highly prospective uranium tenure.

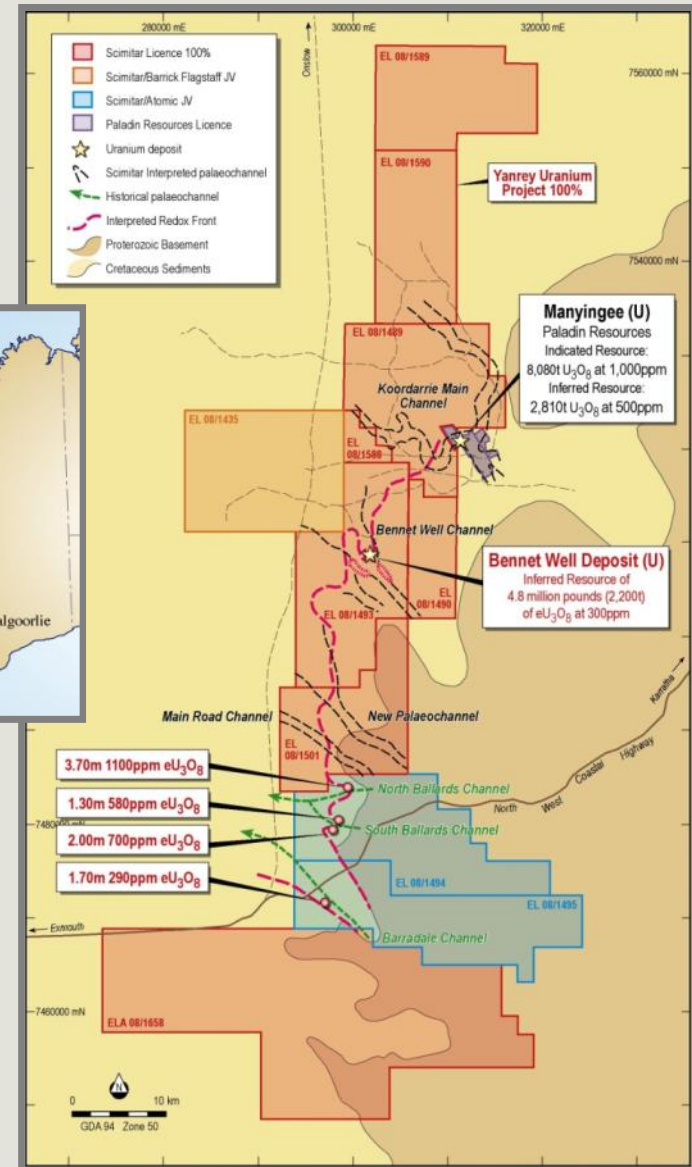
- ☛ Jackson Minerals Limited – ASX JAK
- ☛ Large Argentinean Uranium Deposits
- ☛ Fertile Uranium Exploration Ground
- ☛ Advanced Nuclear Power Generation Industry



★ Jackson Minerals Project

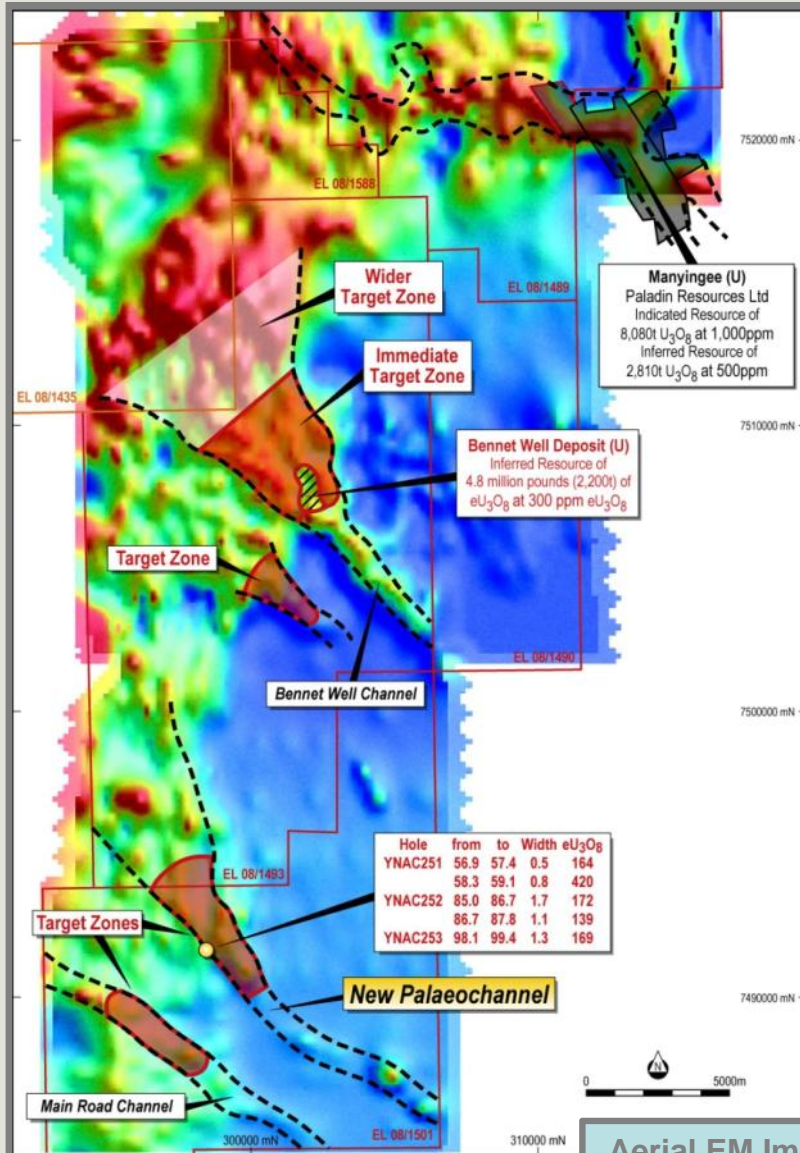
Yanrey – Western Australia

- Large advanced exploration project.
- Interim Resource ⁽¹⁾
4.8 million lb (2,200t) U₃O₈.
- Plus 90 km target zone, relatively un-explored.
- Adjacent Paladin's 26 million lb (10,890t) U₃O₈ Manyingee resource
- Western Australia - Politically favorable for uranium mining.

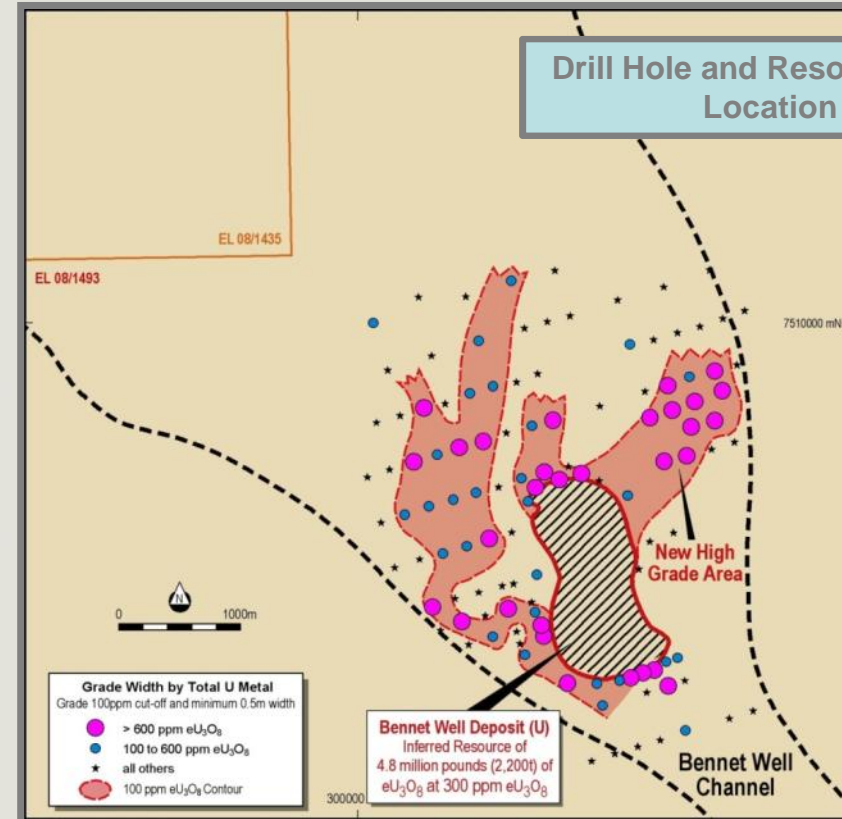


(1) = Bennett Well Inferred Resource of 4.8 million lb (2,200t) U₃O₈, at 300ppm eU₃O₈

Yanrey – Western Australia



Aerial EM Image



1.5m at 1,830 ppm eU₃O₈
 1.1m at 1,576 ppm eU₃O₈
 3.8m at 1,309 ppm eU₃O₈
 3.3m at 933 ppm eU₃O₈
 5.5m at 623 ppm eU₃O₈
 2.4m at 2,072 ppm eU₃O₈

South Australia and Northern Territory



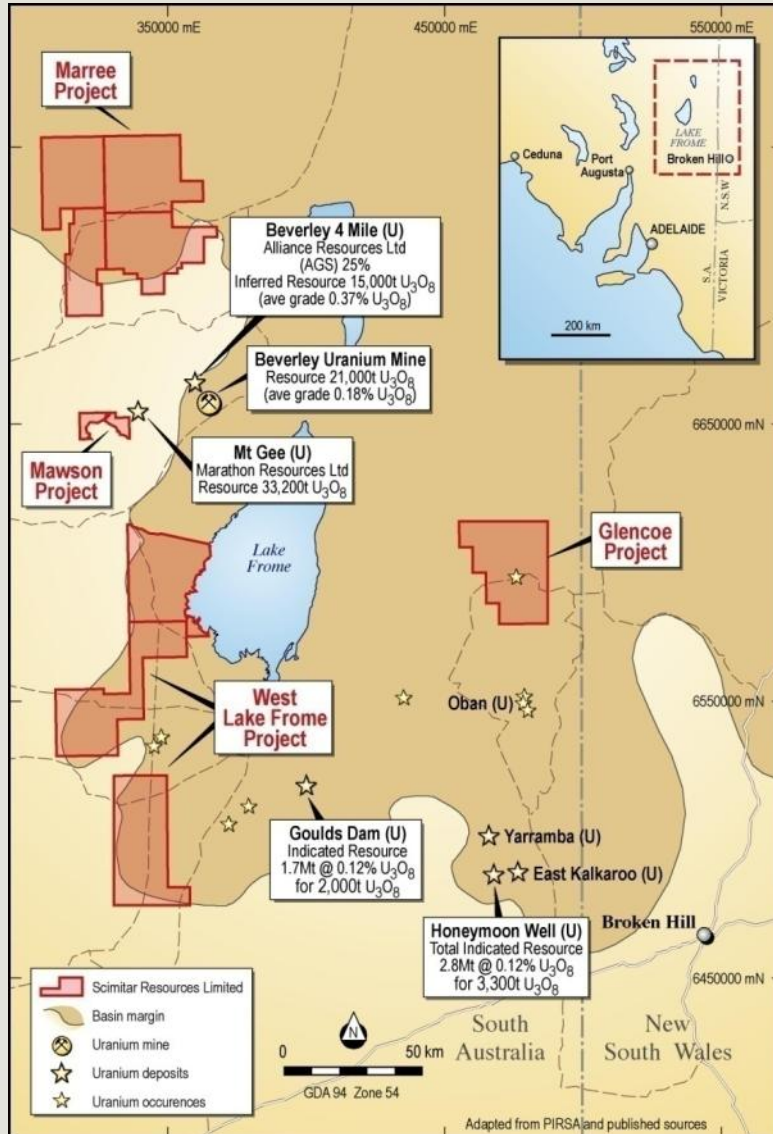
Large Regional Project areas

Eclipse and Amadeus Projects,
NT

Marree, West Lake Frome and
Glencoe Projects, SA

Politically favorable for uranium
mining

Projects close to existing deposits
and infrastructure



Four project areas covering 6,390 sq km's in a world class Uranium province

Prospective for sandstone hosted uranium mineralisation

\$6.2 M Marree JV with Korean Consortium



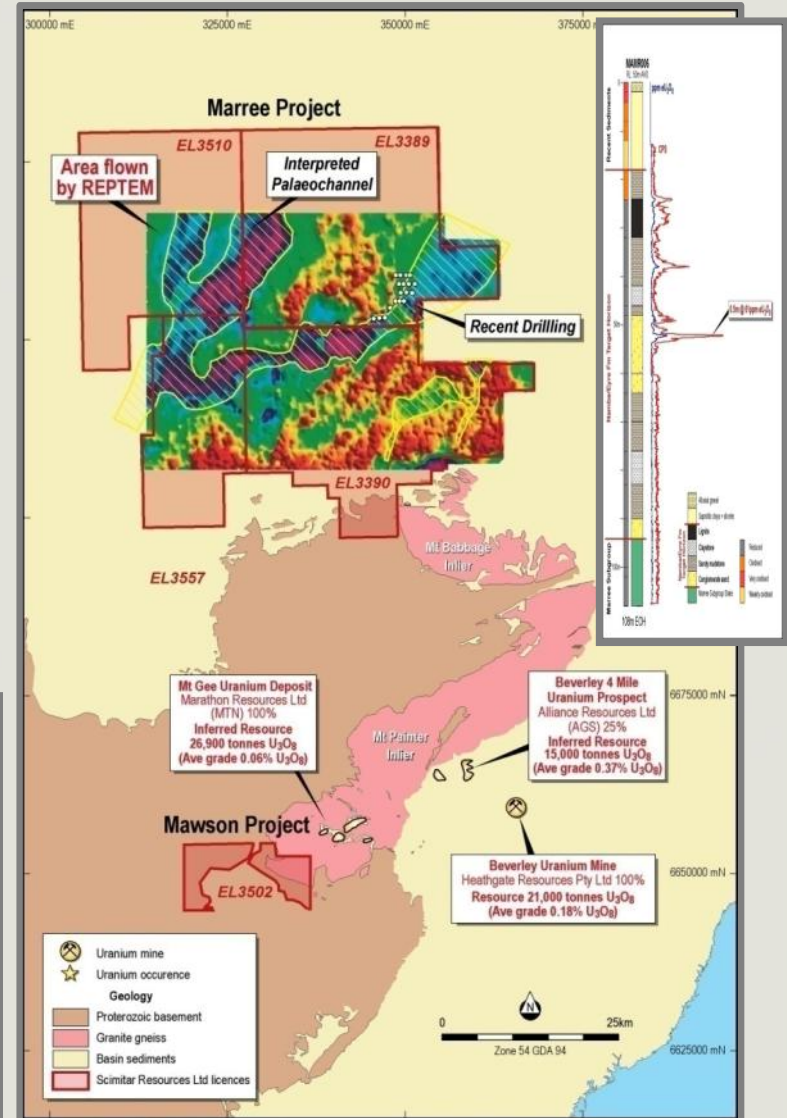
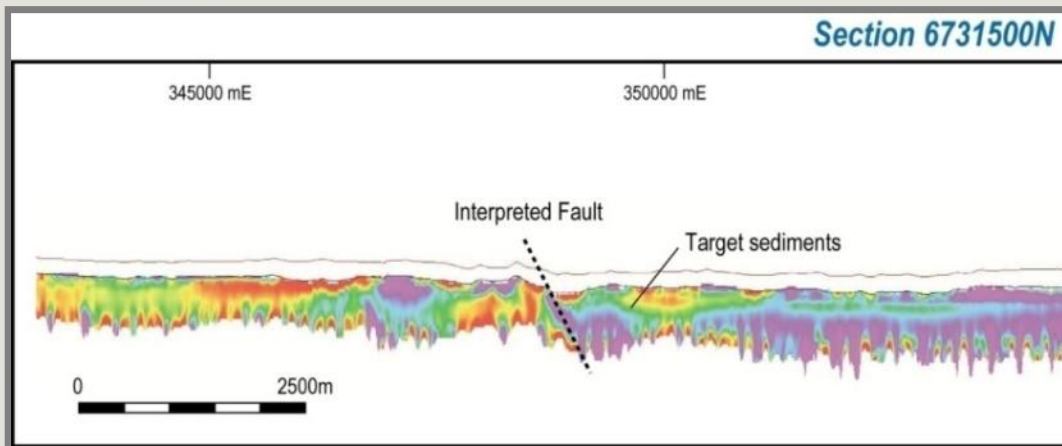


Marree JV South Australia

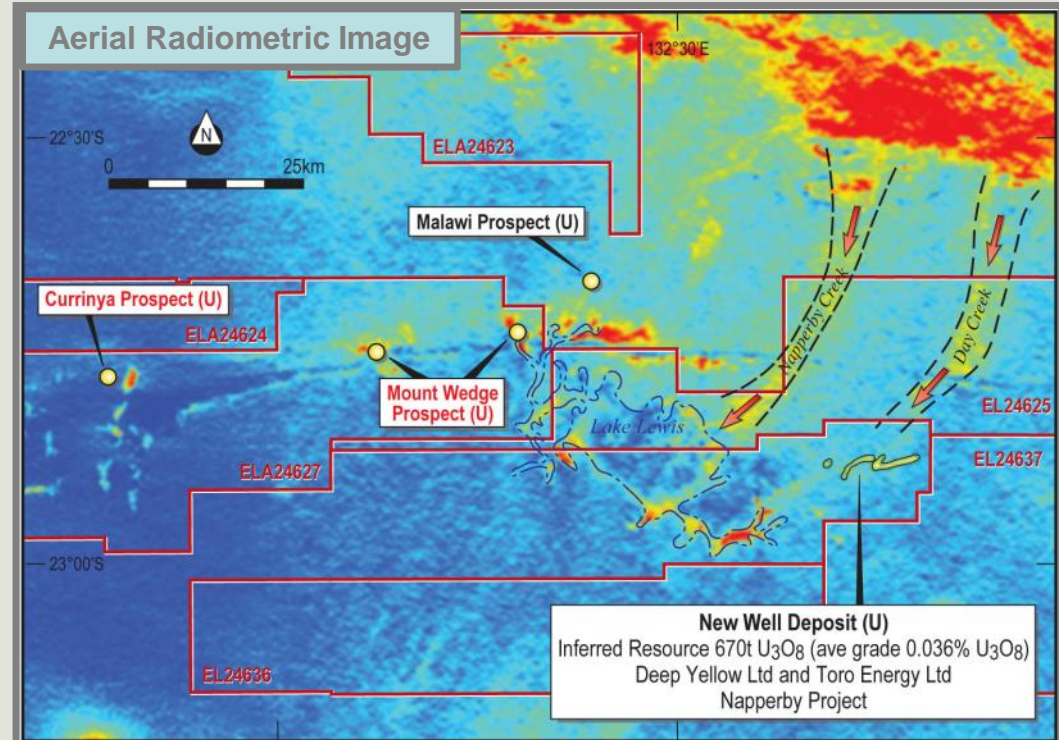
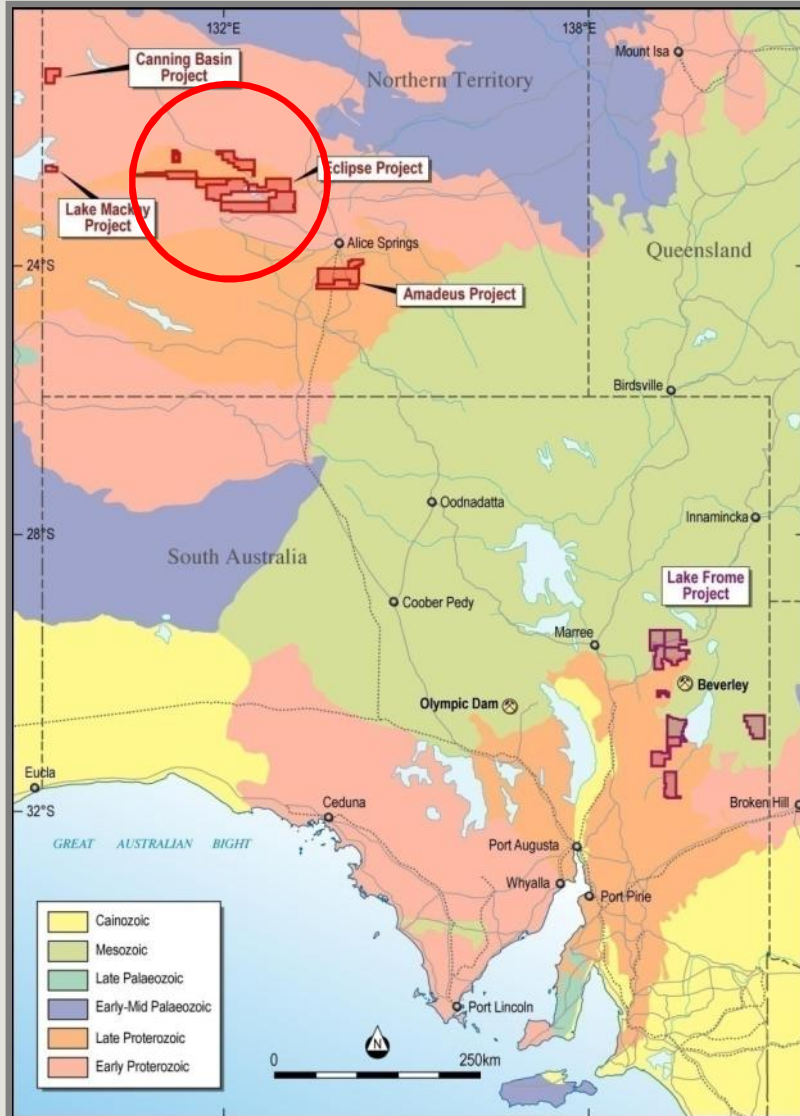
Korean Consortium earning up to 50% interest in project by funding A\$6,200,000 in exploration over three years

Scimitar to manage exploration

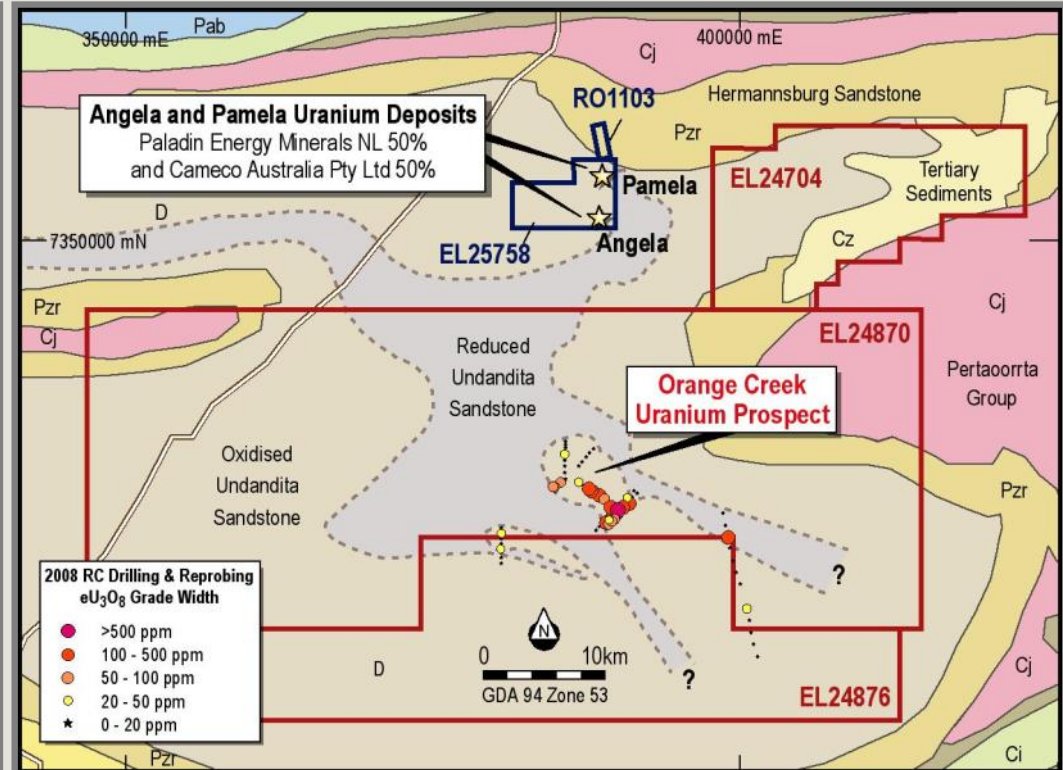
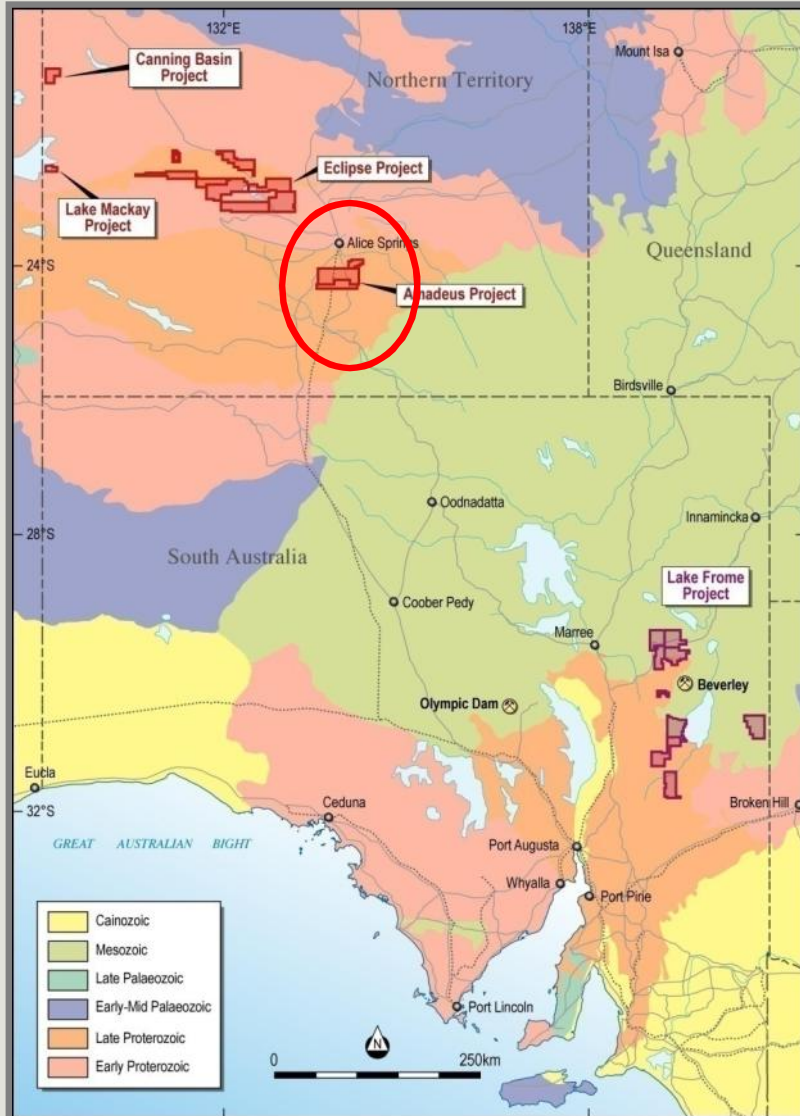
JV Exploration commencing soon



Eclipse Project NT



Amadeus Project NT



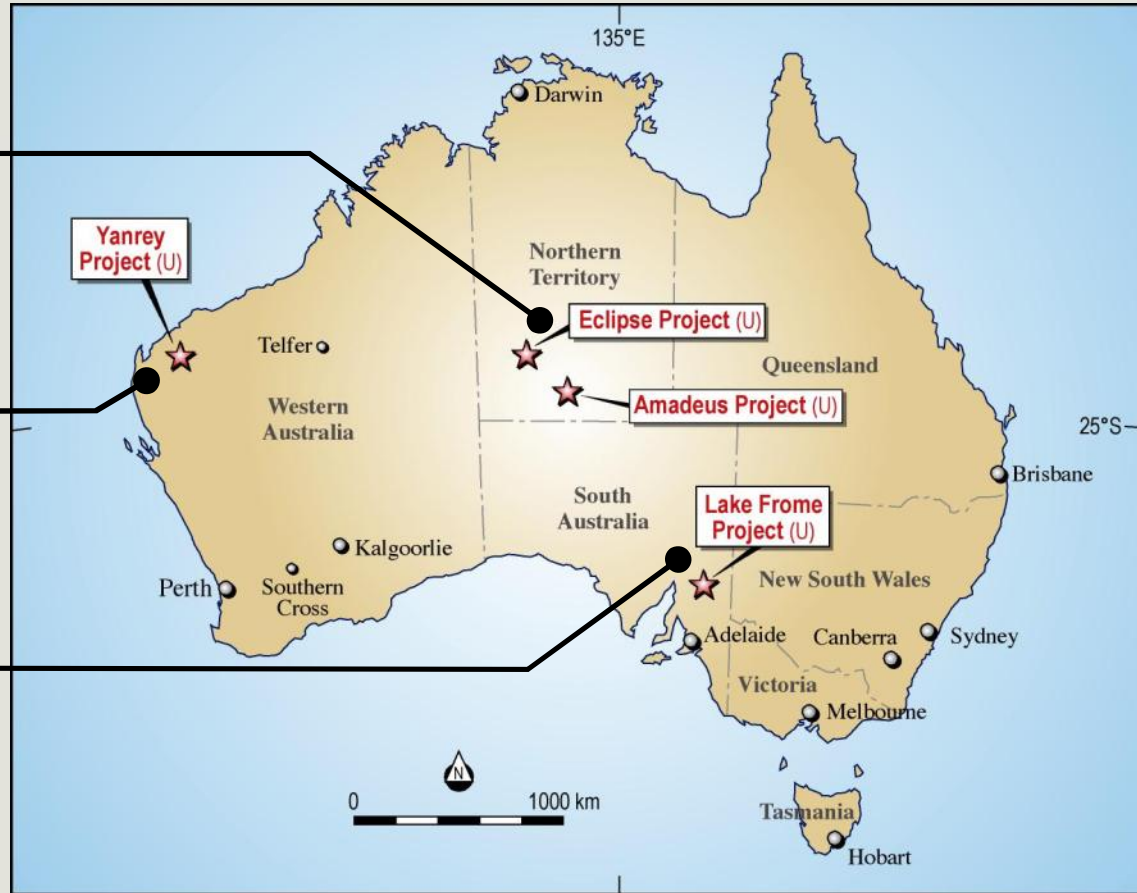


Core Projects Australia

Northern Territory
Amadeus Project
Eclipse Project

Western Australia
Yanrey Project

South Australia
Marree Project
Lake Frome Project



Big Land Package - +17,000 sq km
Defined uranium mineralisation
Near existing resources and mines



Australian Uranium Deposits

| Project | Owner | U ₃ O ₈ | |
|----------------------|--------------------|-------------------------------|-----------|
| | | Mlbs | Tonnes |
| Mines | | | |
| Olympic Dam | BHPB | 3,500 | 1,600,000 |
| Ranger | ERA | 207 | 94,122 |
| Beverley | Heathgate/Alliance | 46 | 21,000 |
| Resources | | | |
| Jabiluka | ERA | 359 | 163,000 |
| Yeelirrie | BHPB | 116 | 52,500 |
| Kintyre | Rio Tinto | 80 | 36,000 |
| Mt Gee | Marathon | 73 | 33,000 |
| Valhall/Skal | Summit | 68 | 30,900 |
| West Moreland | Laramide | 50 | 22,500 |
| Beverley 4 Mile West | Heathgate/Alliance | 33 | 15,000 |
| Koongarra | Cogema | 32 | 14,540 |
| Mulga Rock | Eaglefield | 30 | 13,300 |
| Manyingee | Palagin | 26 | 12,000 |
| Angela | | 23 | 10,250 |
| Honeymoon | Uranium One | 21 | 9,500 |
| Lake Way/Centipede | Nova | 20 | 9,000 |
| Bigrlyi | Energy Metals | 11 | 5,200 |
| Den Lomond | Mega | 10 | 4,760 |
| Maureen | Mega | 6 | 2,940 |
| Angelo River | Mega | 2 | 1,000 |

Sold by Rio Tinto for A\$564 M

Marree Style Target - SA

Yanrey Style Target - WA

Amadeus Style Target - NT

Eclipse Style Target - NT

49 % sold by Uranium One for A\$104 M

Source:- Australian Uranium Resources – Australian Uranium Association website (2007).



South American energy crisis

Mature & growing nuclear power generation industry

Local demand for uranium

Government support

Argentina Nuclear Power Generation



a

ATUCHA I
357 Mwe

U levemente enriquecido



b

EMBALSE
648 Mwe
U natural



c

ATUCHA II
(en construcción)

745 Mwe
U natural

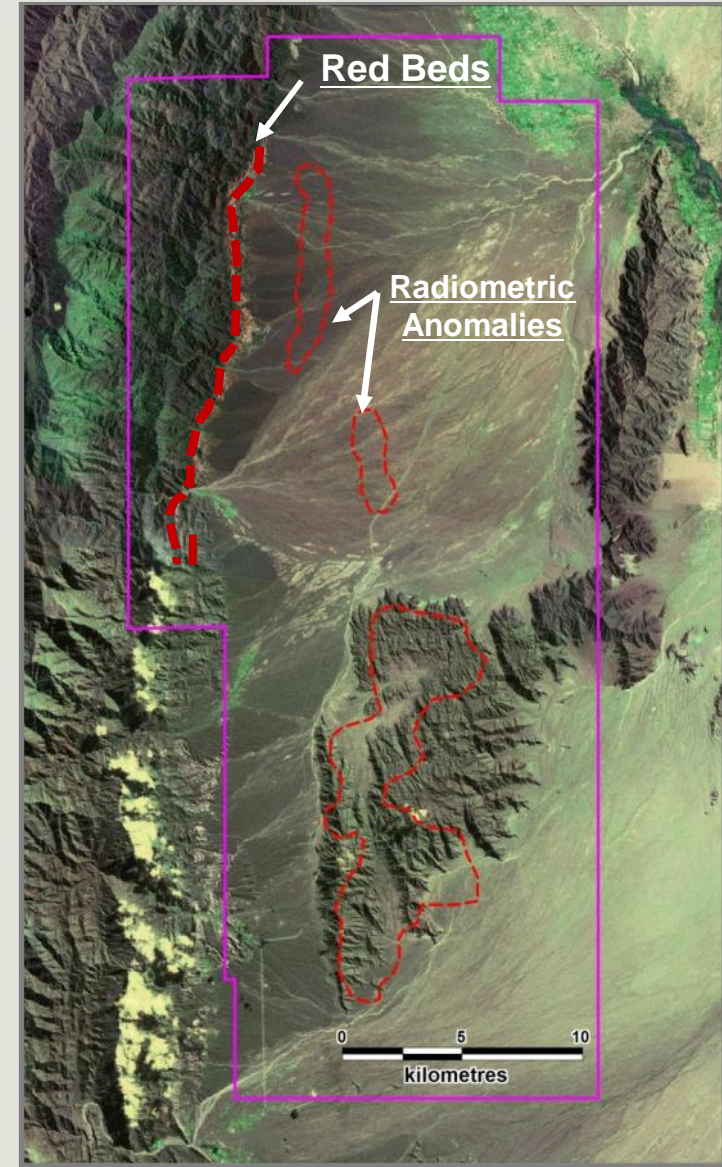
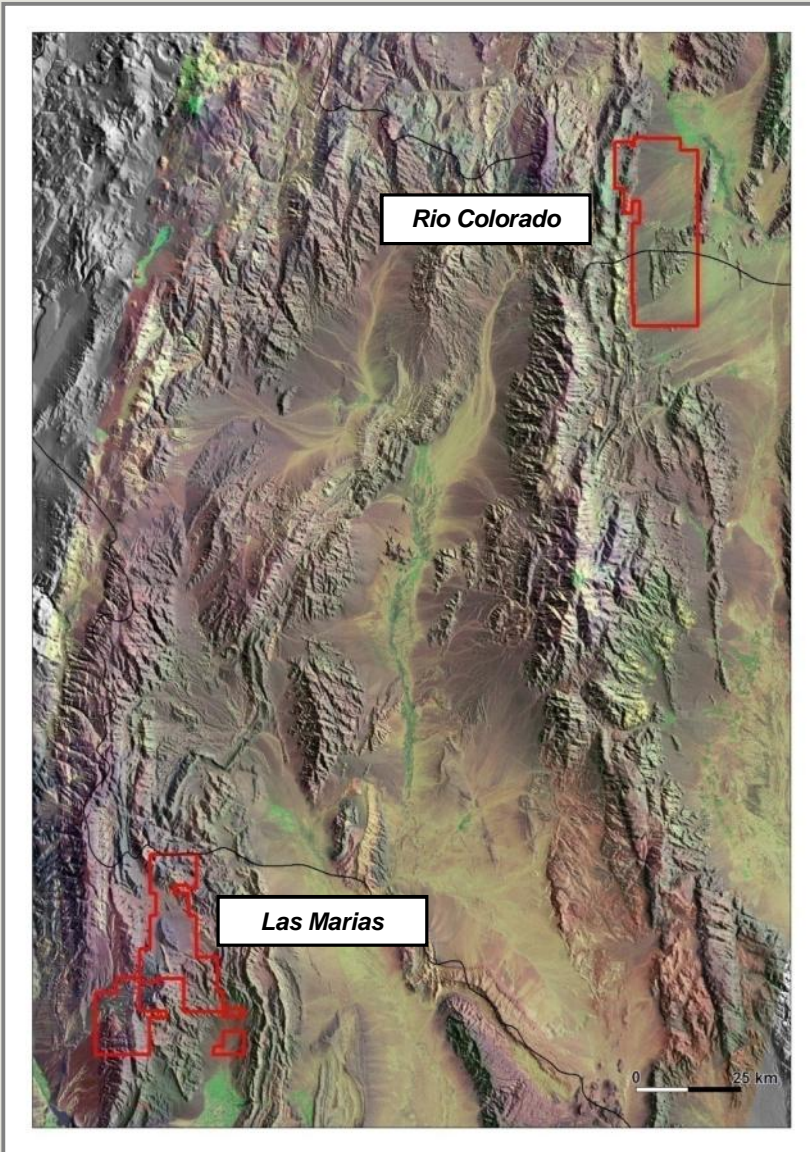


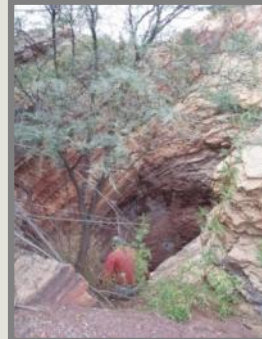
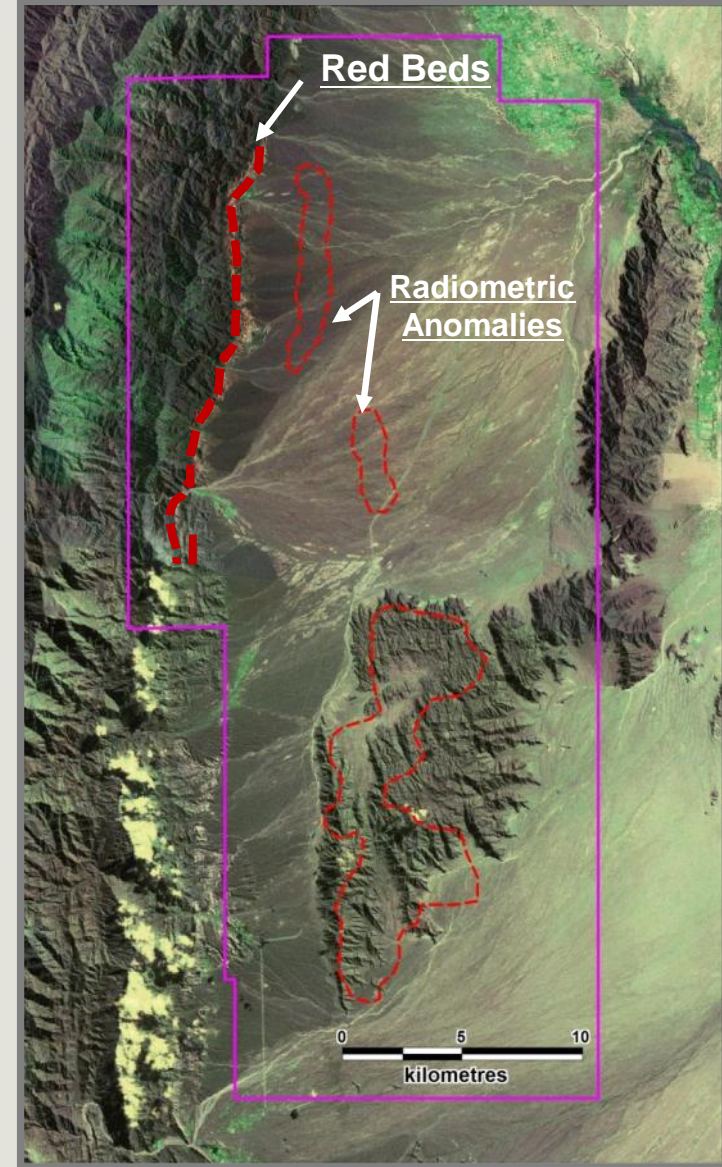
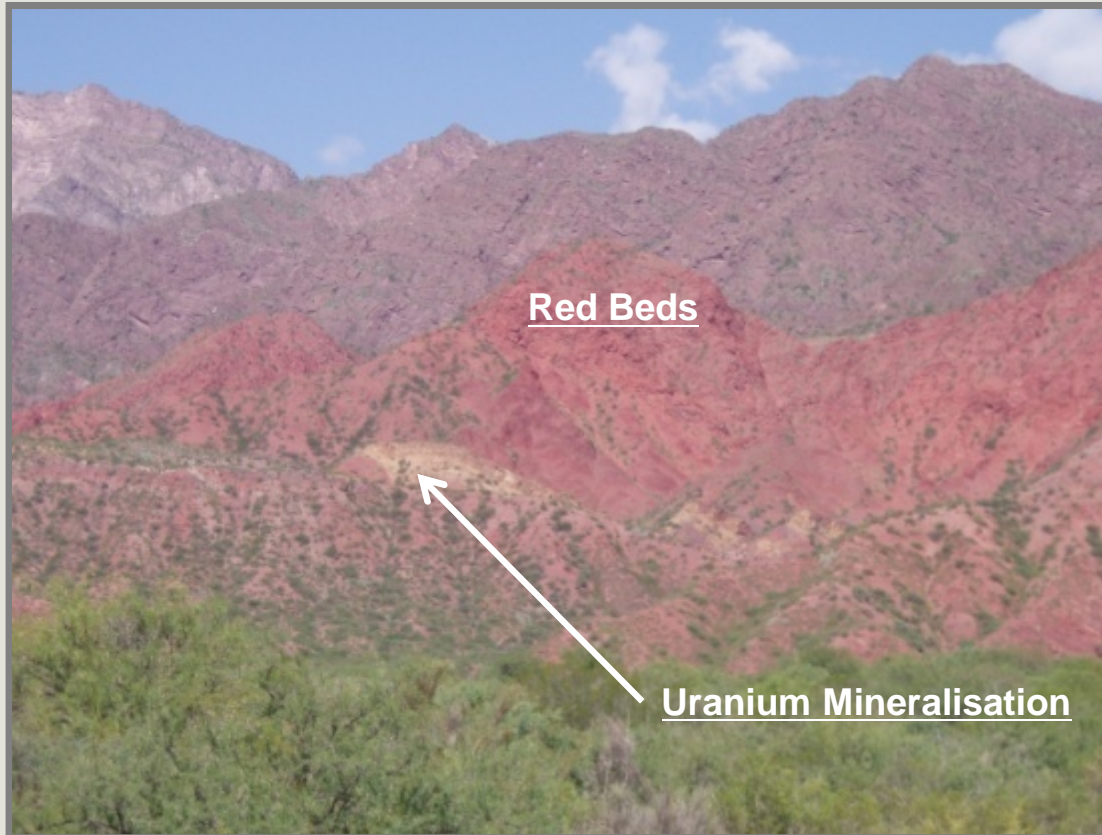


Argentina Nuclear Power Generation

- Two nuclear power generators – Atucha I and Embalse.
 - Producing 8.6% of current power consumption.
 - Electricity supply inadequate for demand and growth.
- Plans for the expansion of the nuclear power capacity to 16% by 2015.
 - Building of 3rd reactor underway.
 - Scoping another 3 additional reactors.
- Strategy for the internal supply of uranium fuel source.
 - Historical production of 2,500 tU₃O₈, up to 1995. Six production sites.
 - Current reactor usage of 120 tpa U₃O₈, with a projection of +250 tpa U₃O₈ (3 reactors). Life of reactor requirements 7,500 tU₃O₈.
 - Resource potential - top 10 country?





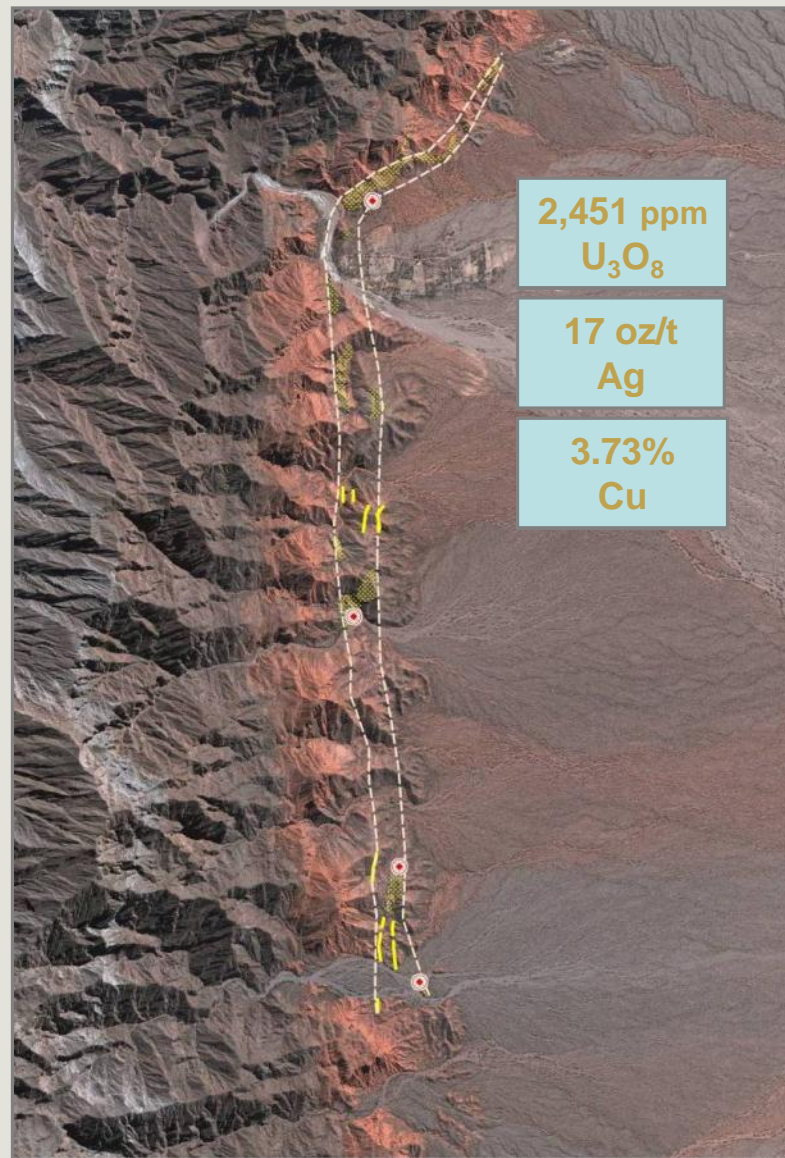




Rio Colorado Poly-Metallic Project

Selected Channel Sample Results

- 8 m @ 705 ppm U_3O_8
- 11 m @ 246 ppm U_3O_8
- 7 m @ 436 ppm U_3O_8
- 6 m @ 763 ppm U_3O_8
- 7 m @ 498 ppm U_3O_8
- 9 m @ 300 ppm U_3O_8





Rio Colorado Exploration Target

- In Rio Colorado, Jackson has a project with the capacity to satisfy all Argentina's domestic requirements for uranium. For 3 reactors, these requirements are;
 - **7,500 tons or 16 M lbs U_3O_8**
- At Rio Colorado, only 3 km of the 16 km mineralised trend is required to meet Argentina's current "life of reactor" demand for uranium. The "Stage 1 Exploration Target" (3 km strike to 150 metres below surface) includes:
 - **11 to 18 M lbs U_3O_8**
- Copper and silver mineralisation provides valuable metal credits.



Australian Uranium Deposits

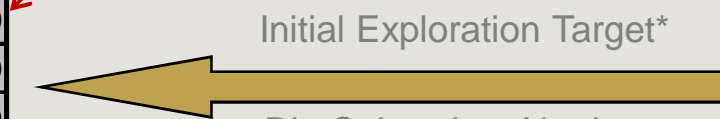
A Comparison

| Project | Owner | U ₃ O ₈ | |
|----------------------|--------------------|-------------------------------|-----------|
| | | Mlbs | Tonnes |
| Mines | | | |
| Olympic Dam | BHPB | 3,500 | 1,600,000 |
| Ranger | ERA | 207 | 94,122 |
| Beverley | Heathgate/Alliance | 46 | 21,000 |
| Resources | | | |
| Jabiluka | ERA | 359 | 163,000 |
| Yeelirrie | BHPB | 116 | 52,500 |
| Kintyre | Rio Tinto | 80 | 36,000 |
| Mt Gee | Marathon | 73 | 33,000 |
| Valhall/Skal | Summit | 68 | 30,900 |
| West Moreland | Laramide | 50 | 22,500 |
| Beverley 4 Mile West | Heathgate/Alliance | 33 | 15,000 |
| Koongarra | Cogema | 32 | 14,540 |
| Mulga Rock | Eaglefield | 30 | 13,300 |
| Manyingee | Palagin | 26 | 12,000 |
| Angela | | 23 | 10,250 |
| Honeymoon | Uranium One | 21 | 9,500 |
| Lake Way/Centipede | Nova | 20 | 9,000 |
| Bigryli | Energy Metals | 11 | 5,200 |
| Den Lomond | Mega | 10 | 4,760 |
| Maureen | Mega | 6 | 2,940 |
| Angelo River | Mega | 2 | 1,000 |

Sold by Rio Tinto for A\$564 M



49 % sold by Uranium One for A\$104 M

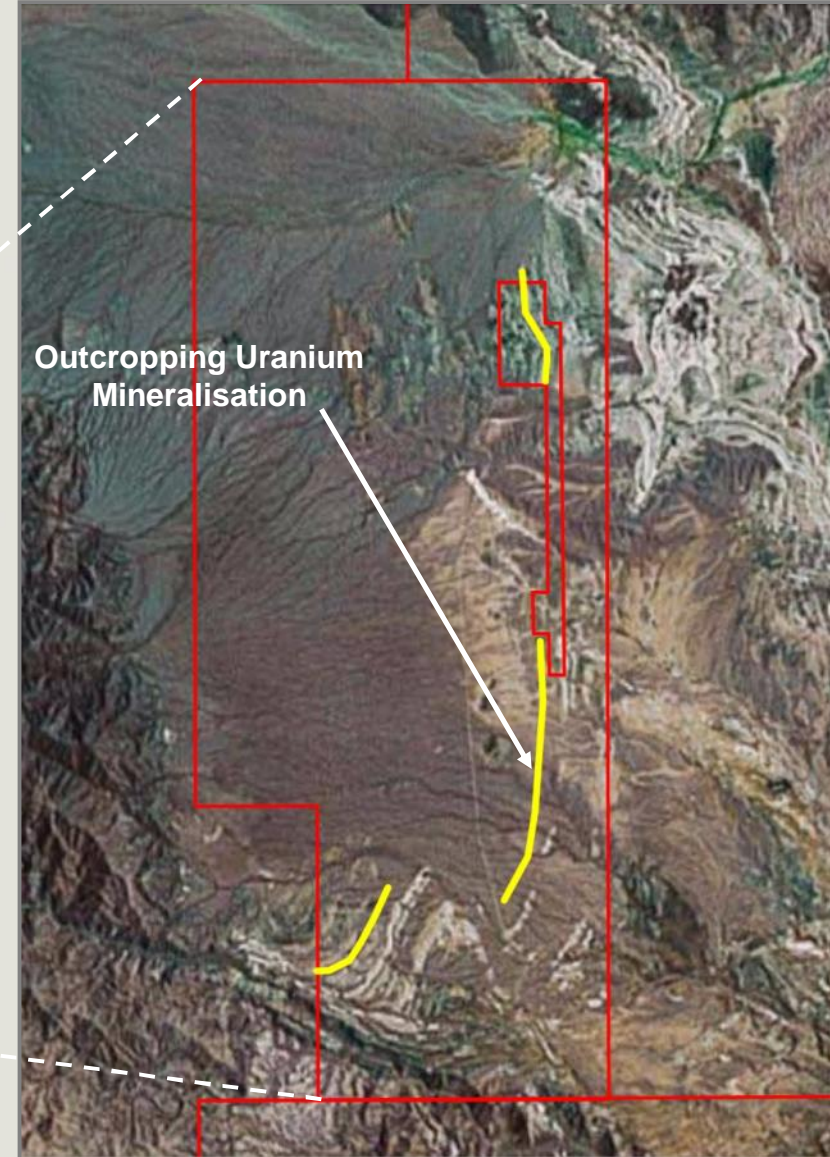
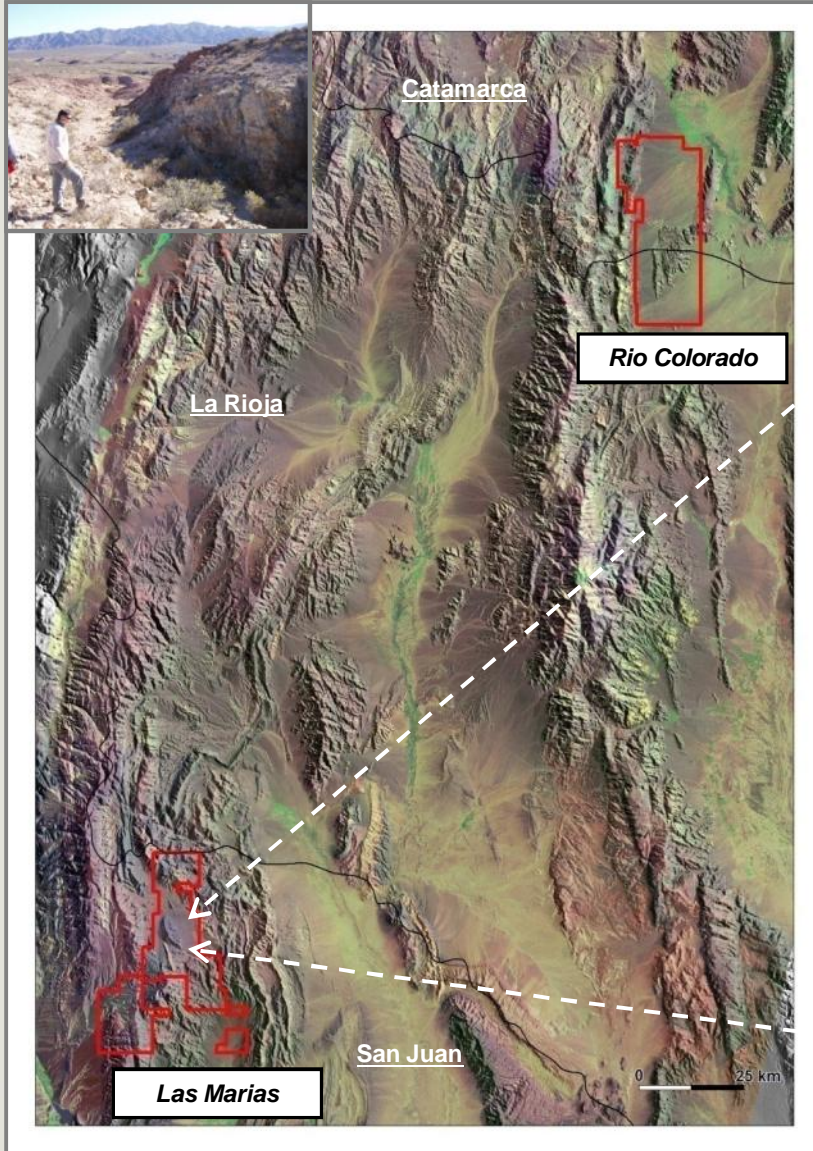


Initial Exploration Target*

Rio Colorado – Northern Sector Oxide

Source:- Australian Uranium Resources – Australian Uranium Association website (2007).

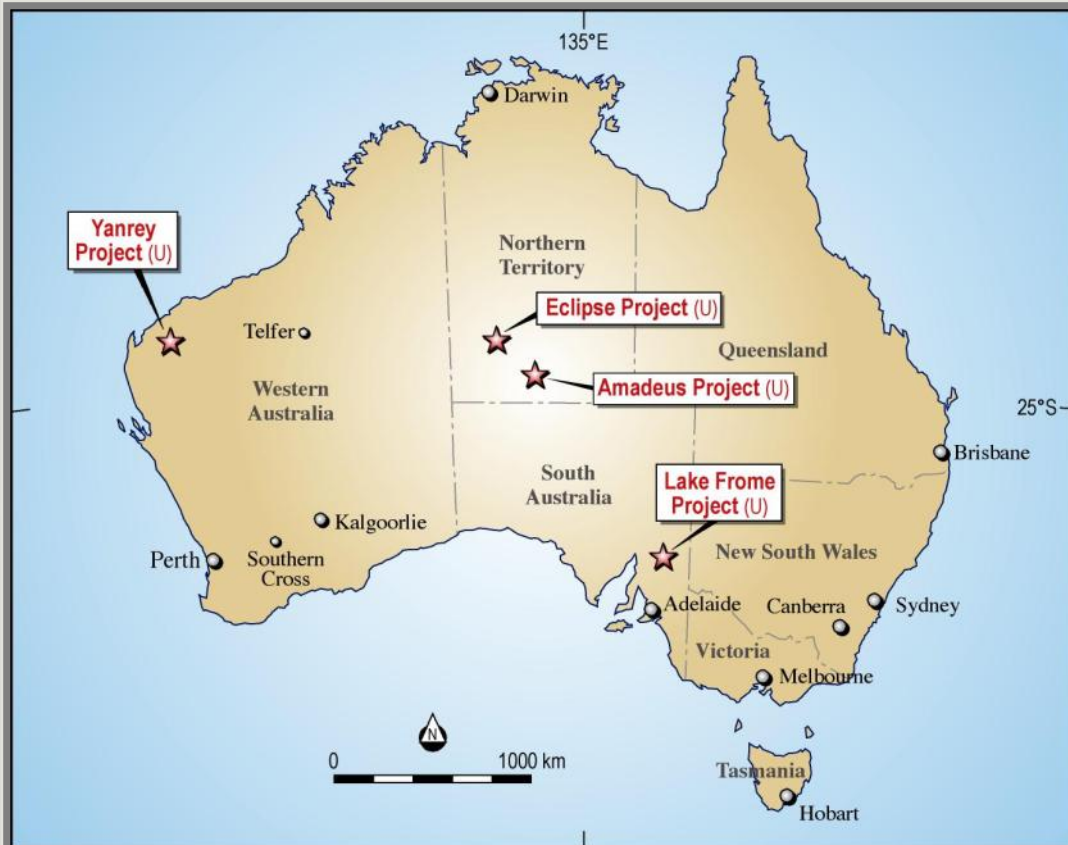
Las Marias Project





Core Uranium Projects

“... the Merged Group will have a greater global presence, controlling a suit of uranium projects that are diversified in terms of stage of development and location.”





Proposed Activities

Date

Activity

- **18 December 08**
Merger announced
JAK Suspended from Trading
 - **13 March 09**
Scheme defined (7.5 JAK : 1 SIM)
 - **16 March**
Documents lodged with ASIC (2-3 wk approval process)
 - **8 April**
First Court Hearing proposed
 - **Early-April**
Notice to JAK Shareholders (28 day notification period)
 - **Early-May**
JAK Shareholder Meeting
 - **Early-May**
Second Court Hearing – Merger complete
-
- **May**
Exploration re-commences in Argentina
Commence regional geophysical surveys at Marree in South Australia
 - **June/July**
Drilling in Argentina
 - **August**
Drilling at Marree in South Australia



Disclosure Statements

Forward Looking Statements:-

This presentation may include forward-looking statements with respect to achieving corporate objectives, developing additional project opportunities, the Company's analysis of opportunities and the development of these and certain other matters. These statements involve risks and uncertainties which could cause actual results to differ from those contained herein. Given these uncertainties, reliance should not be placed on forward-looking statements.

Rio Colorado Exploration Target * :-

This exploration target has yet to be drill tested and is conceptual in nature. There has been insufficient exploration (namely drilling) to define a mineral resource and it is uncertain if further exploration will result in the determination of a mineral resource. The basis for this target includes:-

Extensive surface sampling and mapping of outcropping uranium mineralisation indicating continuity over at least 5 kilometres, open to the south. The area sampled is the northern extent of a 16 kilometre mineralised trend.

Exploration of outcrops, historical underground workings, including adits and drives, has identified oxidation of between 100 and 200 metres down-dip. For this exploration target a conservative figure of 150 metres has been used.

Mineralised widths where sampled (includes incomplete outcropping profiles) are up to 21 metres, averaging approximately 7 to 12 metres. No complete outcrop of the mineralisation is less than 7 metres.

Mineralisation in higher grade zones is up to 2,430 ppm U_3O_8 (1 metre sample), but averages between 300 and 750 U_3O_8 over the average widths reported above.

Surface sampling is in the form of continuous channel samples, assayed on a one metre basis. Sampling was supervised by a Consultant Geologist with more than 30 years experience. Analysis was completed by Alex Stewart Laboratories in Argentina, a respected international assay service company.

This exploration target is specified over 3 kilometres of a 16 kilometre trend. The southern 10 kilometres of this trend has yet to be fully tested, however reconnaissance sampling and examination of underground workings suggest a similar tenor of mineralisation as defined in the north.

The exploration target is for the uranium mineralisation only. Metallurgical test-work is currently being conducted which will allow the Company to better understand the value of associated metals such as copper and silver. Individual samples of copper up to 3.73% and silver up to 17 oz/t indicates in areas of this deposit, these metals may have greater value than the uranium.

While exploration to date identifies the high grade copper (+1%) and silver (+1oz) mineralisation is less than 3 metres wide, the Company does not have sufficient sampling data to be able to define the continuity of these metals along strike or within the regolith. This work is continuing.

Competent Person:-

The information in this report to which this statement is attached that relates to Exploration Results, Mineral Resources or Ore Reserves is based on information compiled by Mr Brett Smith, who is a Member of the Australasian Institute of Mining and Metallurgy. Mr Smith is a full-time employee of the Company. Mr Smith has sufficient experience which is relevant to the style of mineralisation and type of deposit under consideration and to the activity he is undertaking to qualify as a Competent Person as defined in the 2004 Edition of the 'Australasian Code for Reporting of Exploration Results, Mineral Resources and Ore Reserves'. Mr Smith consents to the inclusion in the report of the matters based on his information in the form and context in which it appears.



JACKSON MINERALS LIMITED

ASX Code – JAK

ASX Code – SIM



PROFESSIONAL PUBLIC RELATIONS - Showcase – March 2009