

Rawson Resources Ltd

AGM 20th November 2009

Presentation

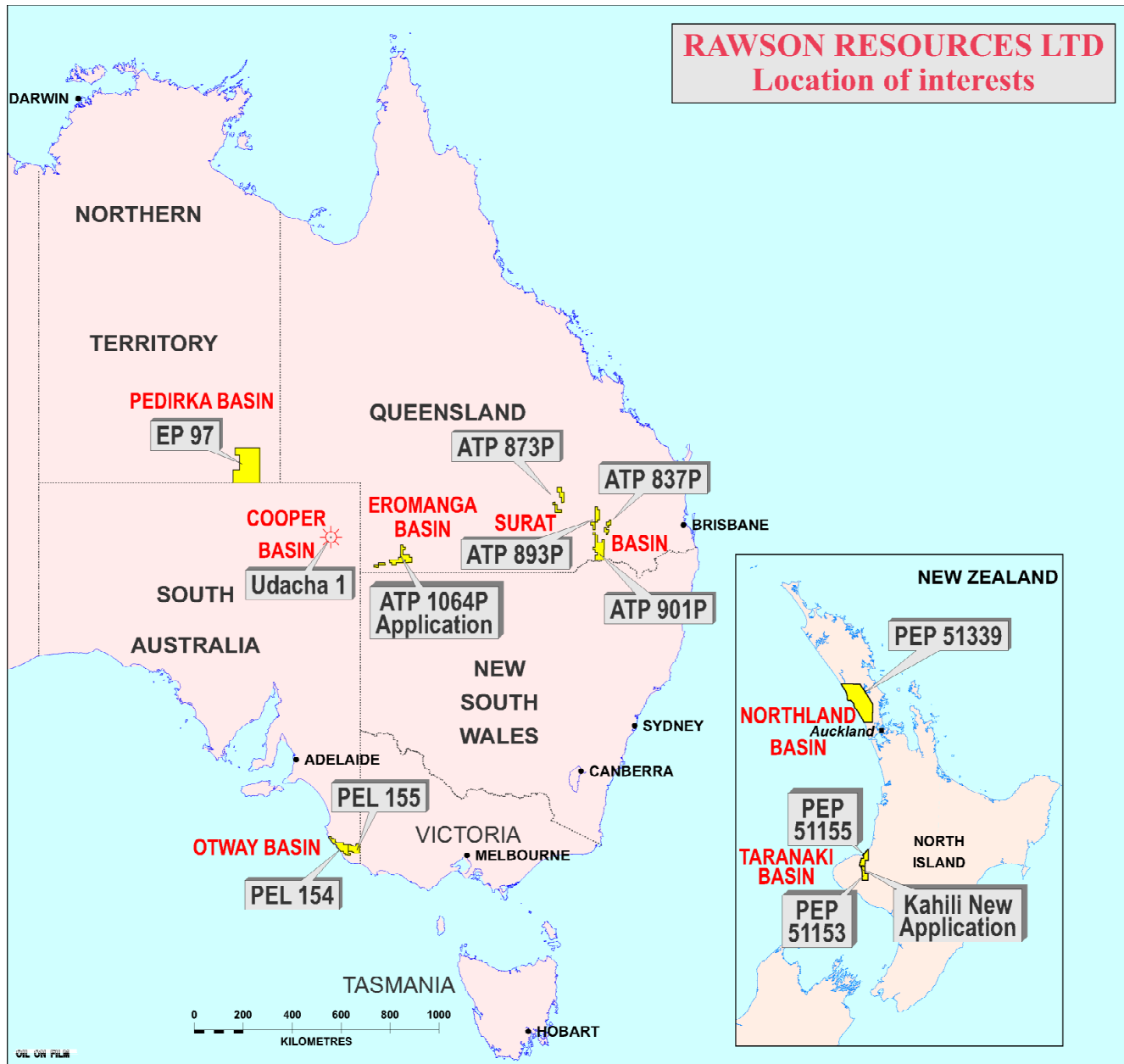
RAWSON RESOURCES
LIMITED



This presentation has been prepared by Rawson Resources Limited (“Rawson” or the “Company”). It should not be considered as an offer or invitation to subscribe for or purchase any securities in the Company or as an inducement to make an offer or invitation with respect to those securities.

This presentation contains forward looking information. Such forecasts, projections and information are not a guarantee of future performance and involve unknown risks and uncertainties. Actual results and developments will almost certainly differ from those expressed or implied. To the maximum extent permitted by applicable laws, Rawson takes no responsibility and assumes no liability for, the authenticity, volatility, accuracy, suitability or completeness of, or any errors in or omission, from any information, statement or opinion contained in this presentation.

You should not act or refrain from acting in reliance on this presentation material. This overview of Rawson does not purport to be all inclusive or to contain all information which it’s recipients may require in order to make an informed assessment of the Company’s prospects. You should conduct your own investigation and perform and own analysis in order to satisfy yourself as to the accuracy and completeness of the information, statements and opinions contained in this presentation.



- Low Risk onshore acreage adjacent to production.
- Oil and Gas drilling in the Otway and Surat Basins.
- Three permits in New Zealand- drilling in 2 next year.
- Application in Qld Eromanga Basin.
- Coal Seam Gas (CSG) exploration in Surat & Pedirka basins.
- Risk reduced by farmout and sound core assets.

MAJOR PROJECTS

SURAT BASIN - Four Permits; Operator in 2.
3-D seismic acquisition near Moonie finishing soon.

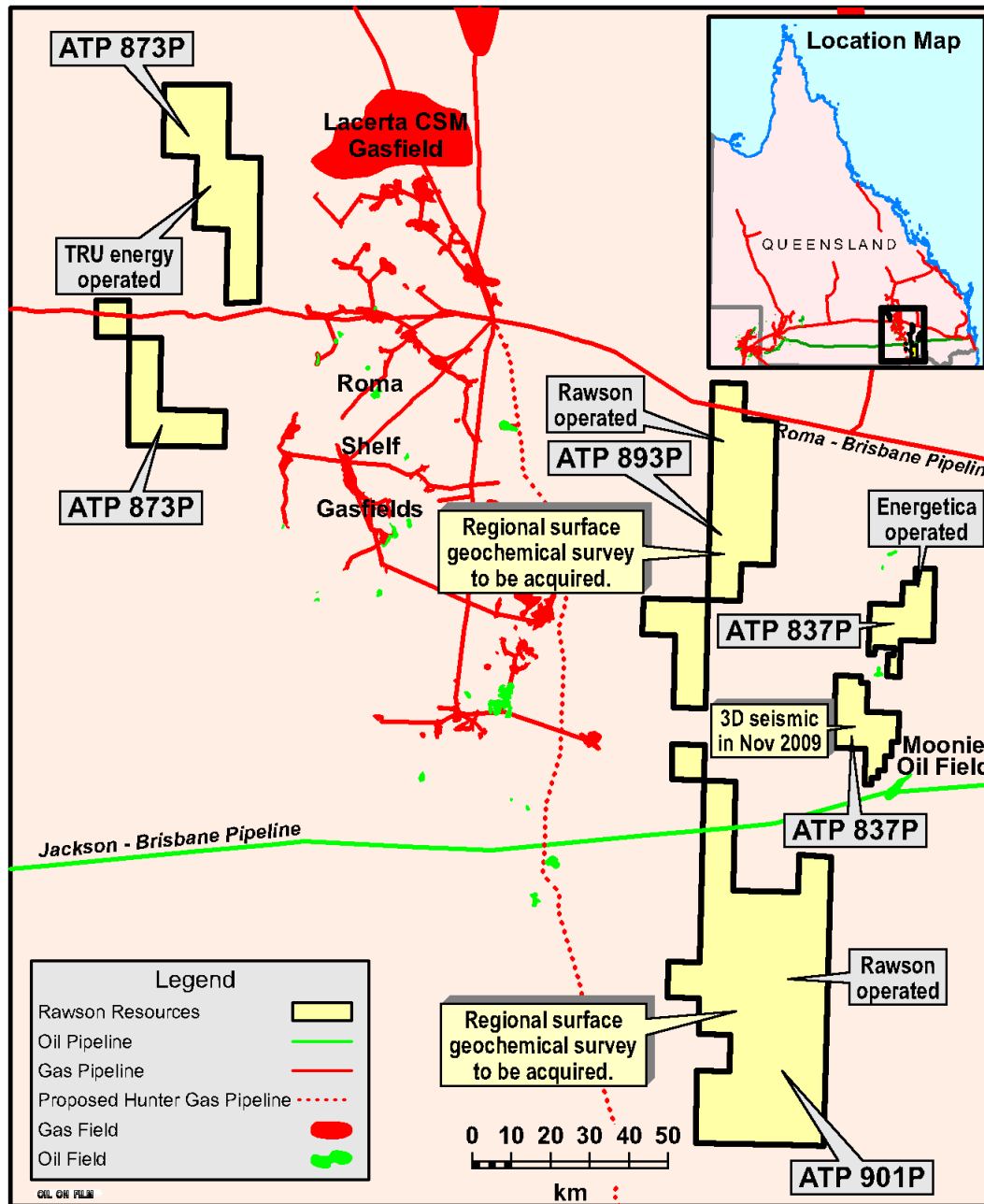
OTWAY BASIN - Two Permits; Operator in 2. 3-D seismic has been acquired drilling locations finalised, negotiations with farminees continuing.

PEDIRKA BASIN - One large permit; Operator.
Central Petroleum operated and paid for a farmin well Simpson 1, which had a 17m residual oil column.
Further seismic to be acquired this summer to locate drilling prospects.

TARANAKI BASIN NZ - Three Permits, with two applications progressing. Taranaki drilling 2010.

Surat Basin Core Project Area

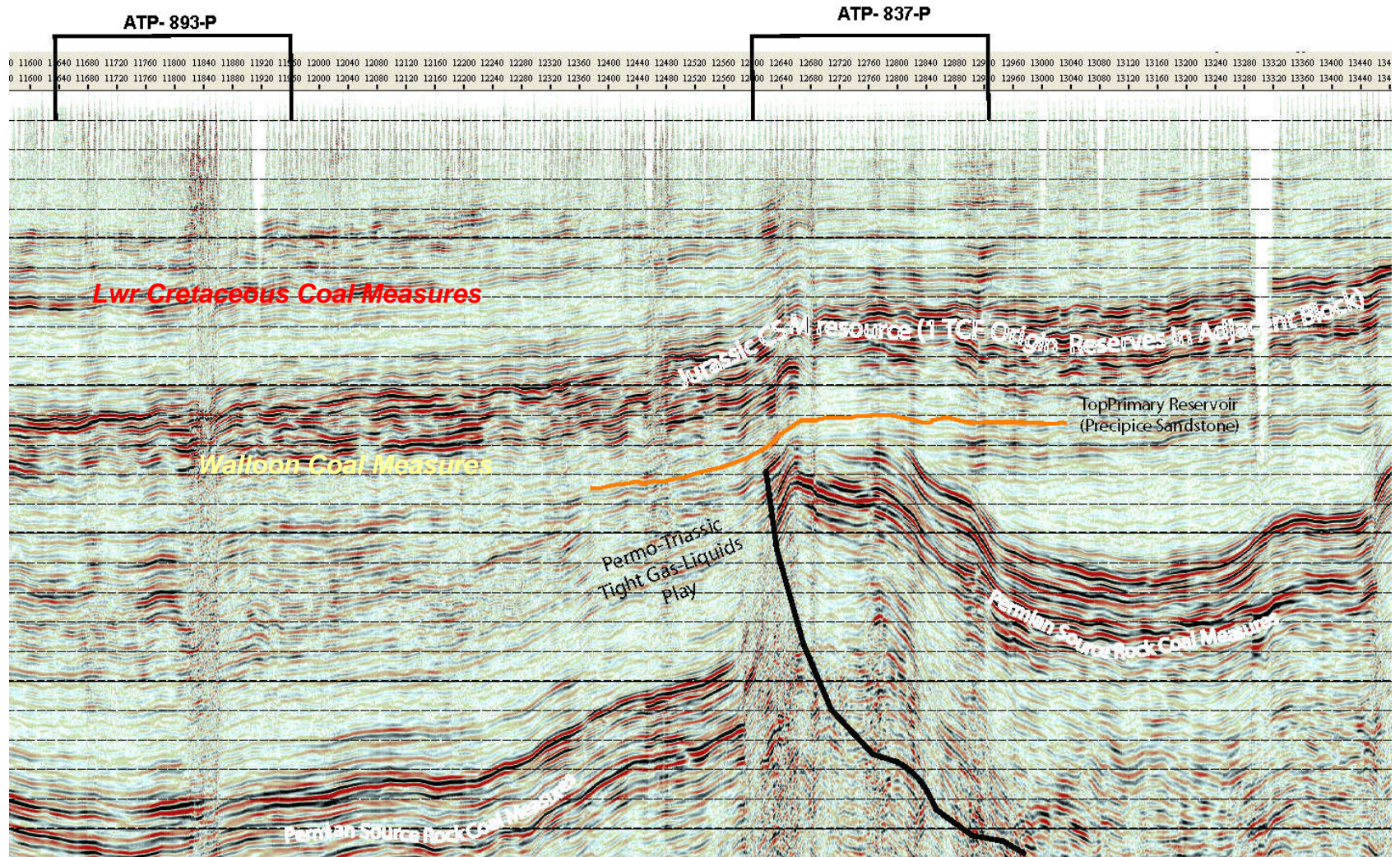
- Rawson now has four permits operates two, ATP's 893 and 901 in the Central Surat Basin, where initial exploration is underway.
- ATP 873 in Surat Basin with TRU Energy and Energetica Resources, adding Coal Seam Gas (CSG) potential to traditional oil & gas plays.
- ATP 837 3-D seismic being currently acquired.



Surat Basin Areas

- All areas close to infrastructure.
- 837 Oil, Gas & CSG targets.
- 3-D seismic in 837 being acquired now.
- 873 CSG wells drilled by TRUenergy.
- 893 & 901 Targeting Oil & deep Gas and CSG. Soilgas surveys to be run in 2009/10.

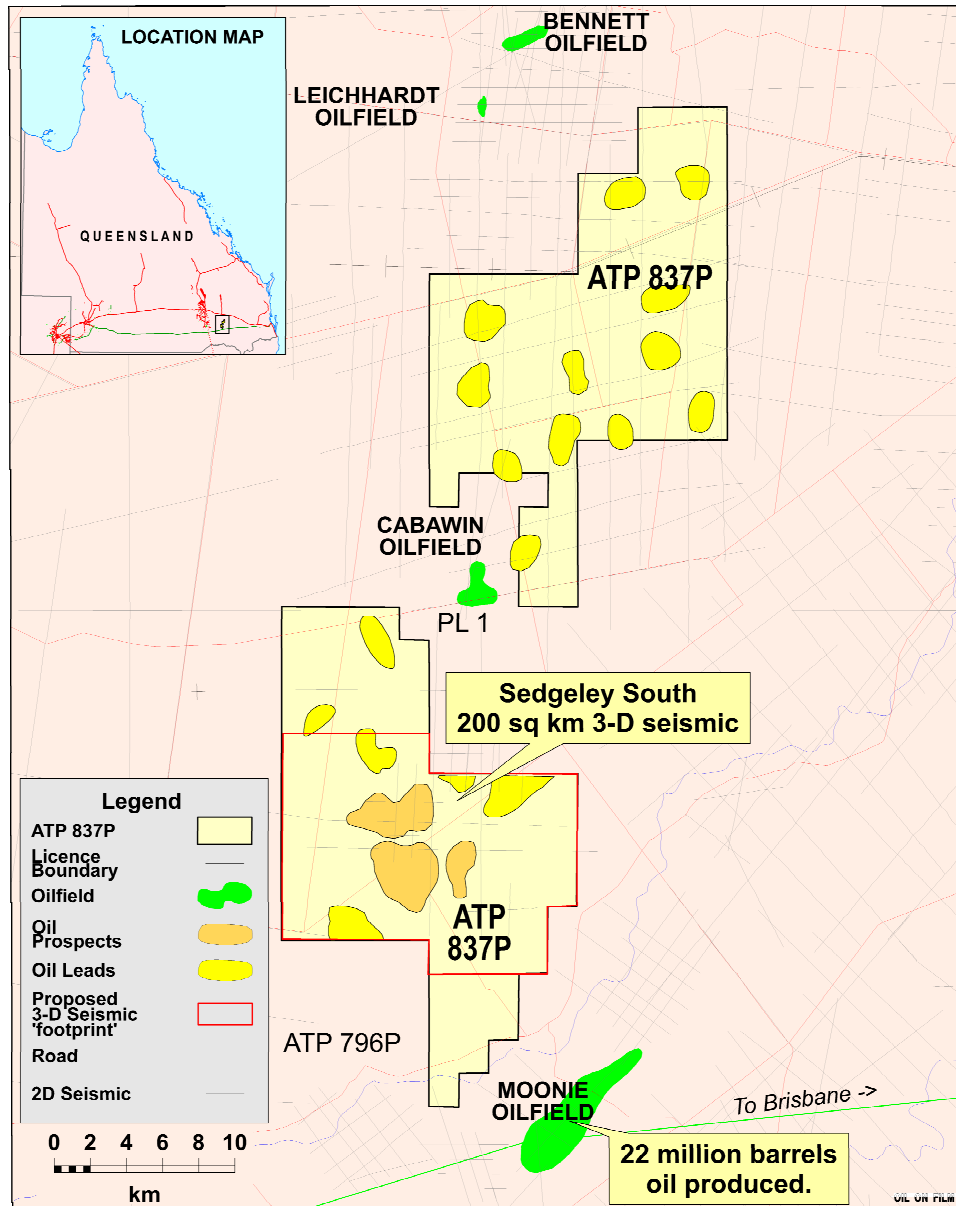
REGIONAL SEISMIC LINE ACROSS THE SURAT BASIN (Line BMR84-14)



0 km 20 km

RAWSON RESOURCES
LIMITED

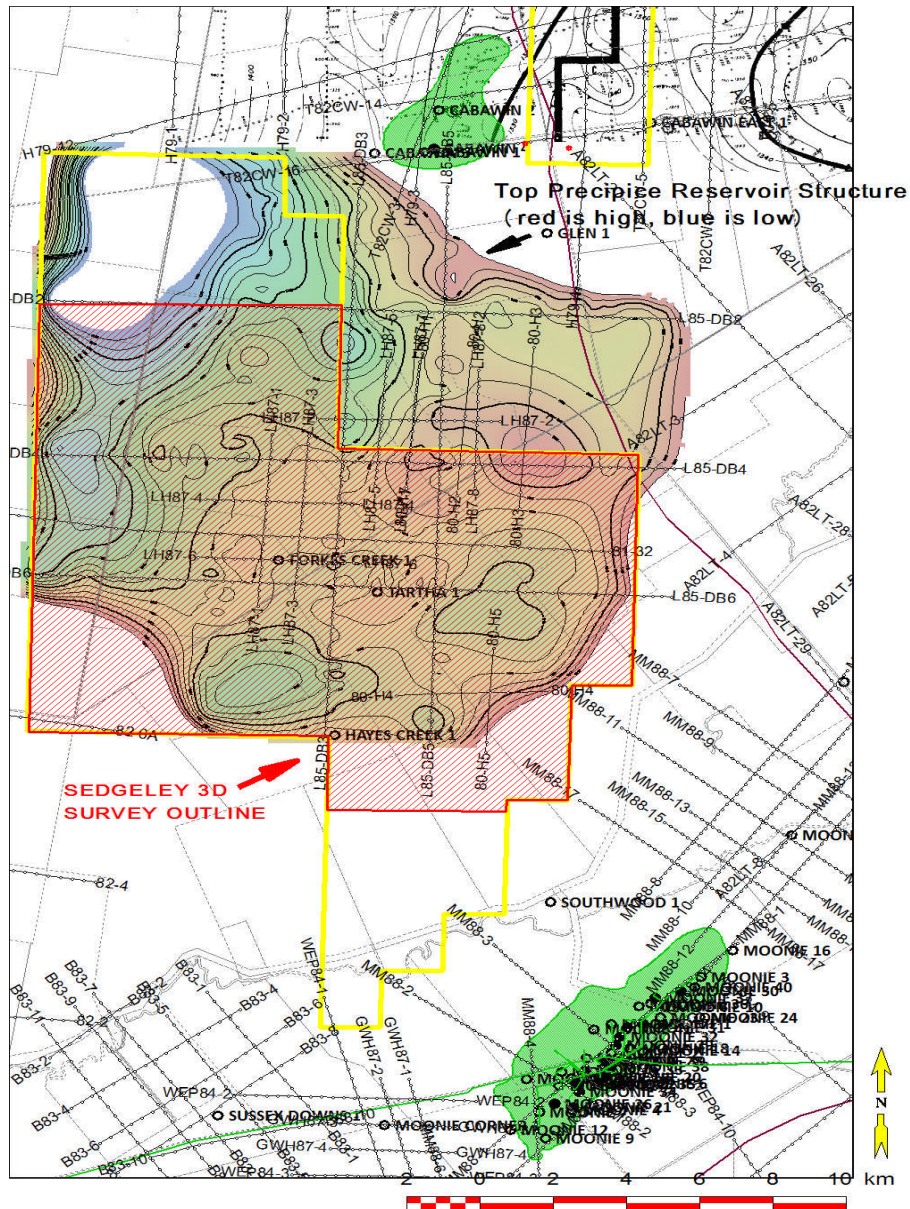
ATP 837P



ATP 873 Oil Project

- A 200 square kilometre 3-D seismic survey is being acquired now as part of the CSG farmout to TRUenergy, the data is being acquired by Velseis using Envirovibe trucks as the energy source.
- This data will be processed and interpreted to enable precise drilling targets to be defined for oil and traditional gas within the area.

Location of the Sedgeley 3-D Seismic Survey ATP 837P



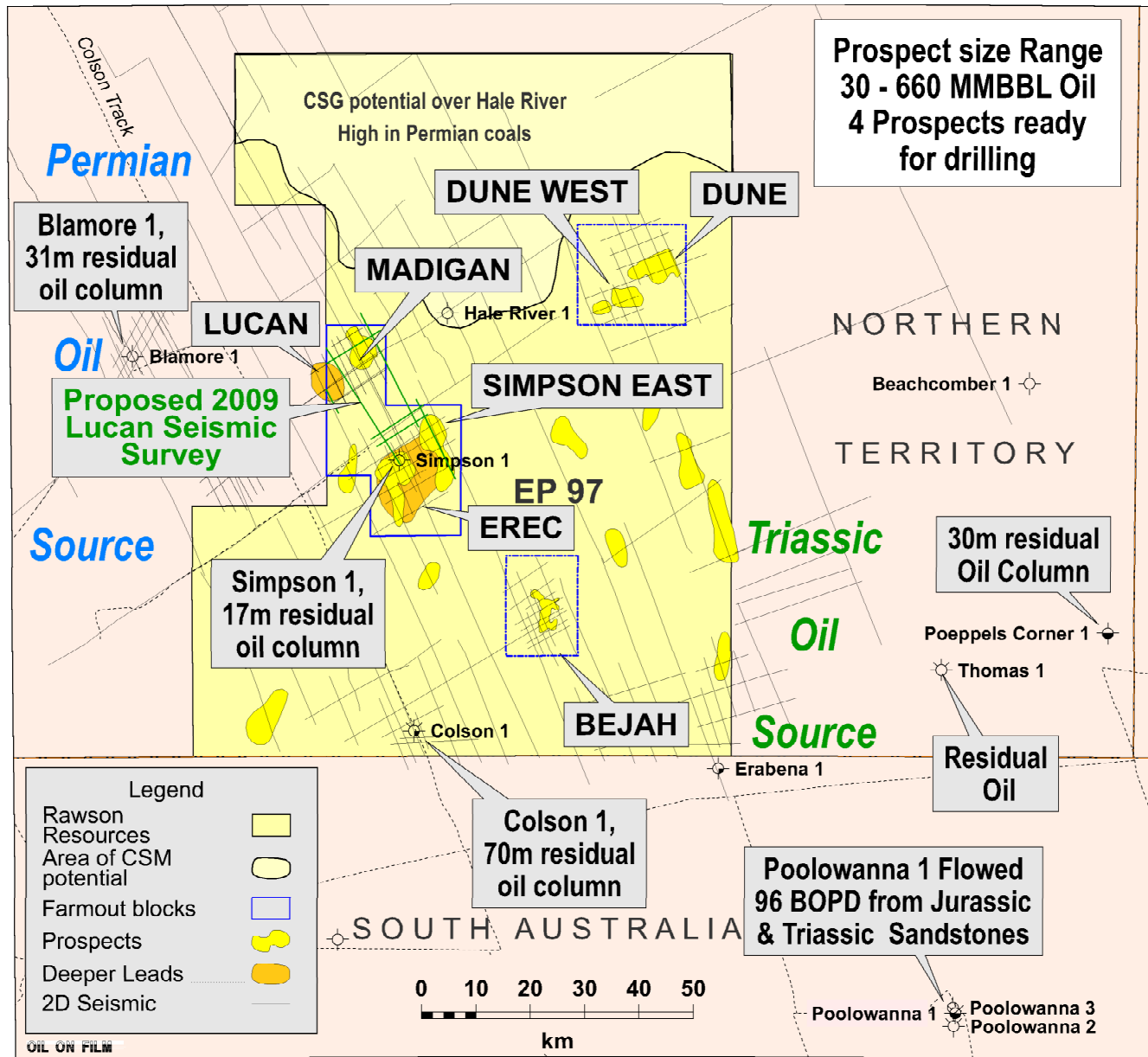
ENVIROVIBE TRUCKS



EP 97 Pedirka Basin Core Project Area, NT

- Central Petroleum drilled Simpson-1 in the Simpson farm-out block of EP97; Central will drill a well in 2010 and still has an option on the Dune and Bejah prospects.
- Recent statements from Central have been very enthusiastic on the oil potential of this area.
- A further 100 km in the Simpson farmout block to be acquired to define the new Madigan leads.
- Coal Seam Gas potential, over the northwest of the Permit, farm-in negotiations in progress.

Oil Exploration in EP 97 Pedirka Basin



- Simpson 1 although not a discovery well has provided much needed data and a 17m 'residual' oil column.
- Central to acquire 100km Lucan Seismic survey this summer.
- Central to drill another well in the Simpson block to earn an interest in the Bejah block.
- The Lucan and Erec prospects have been assessed to contain multi - million barrels of oil at depth.

Seismic acquisition in EP 97 Pedirka Basin 2010

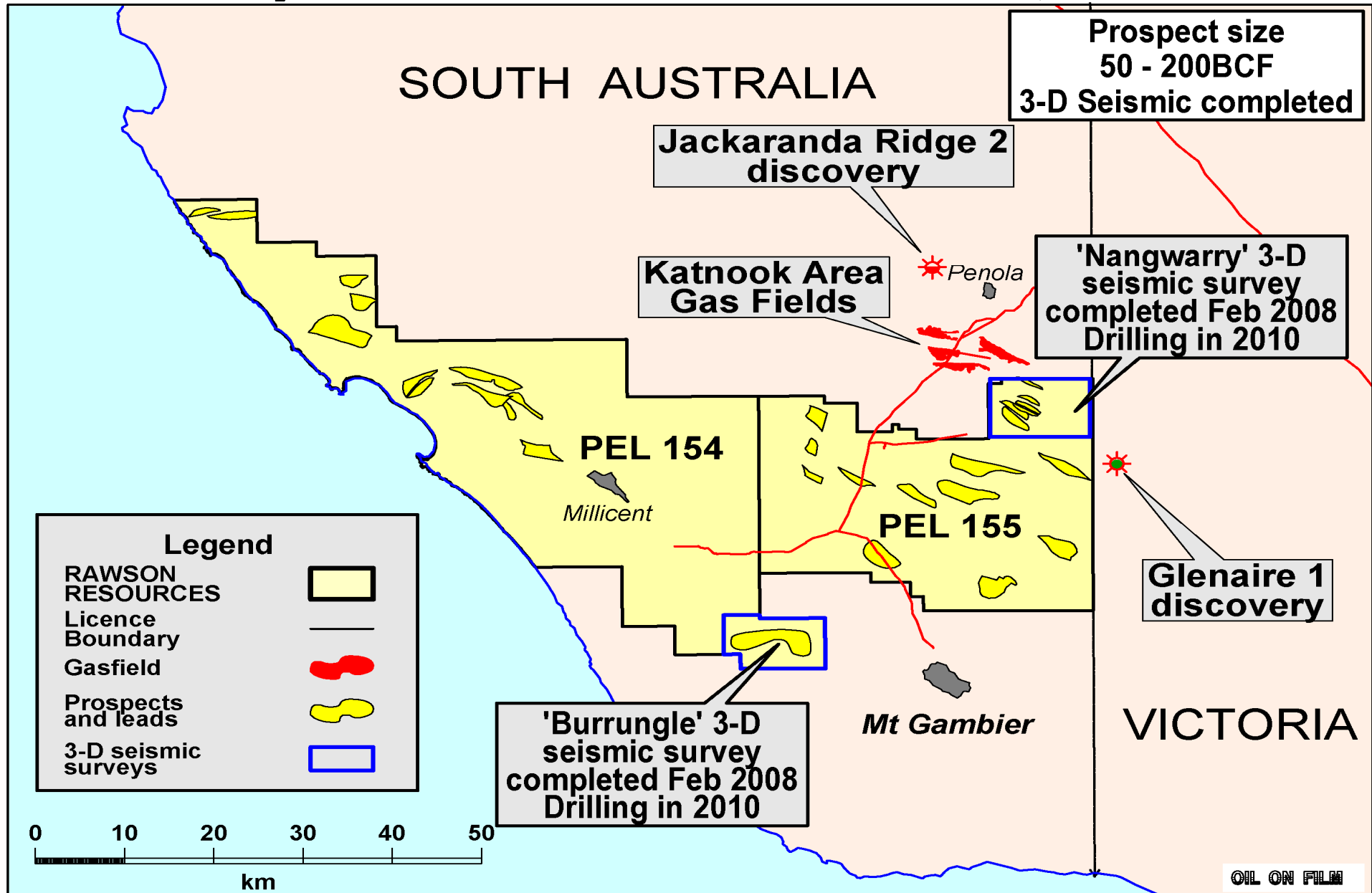


- Central's new seismic program to start early in the New Year.
- Terrex will conduct one of the largest surveys ever acquired in Central Australia.
- Seismic acquired in Rawson's EP 97 will lead to the drilling of a further oil prospect in 2010.

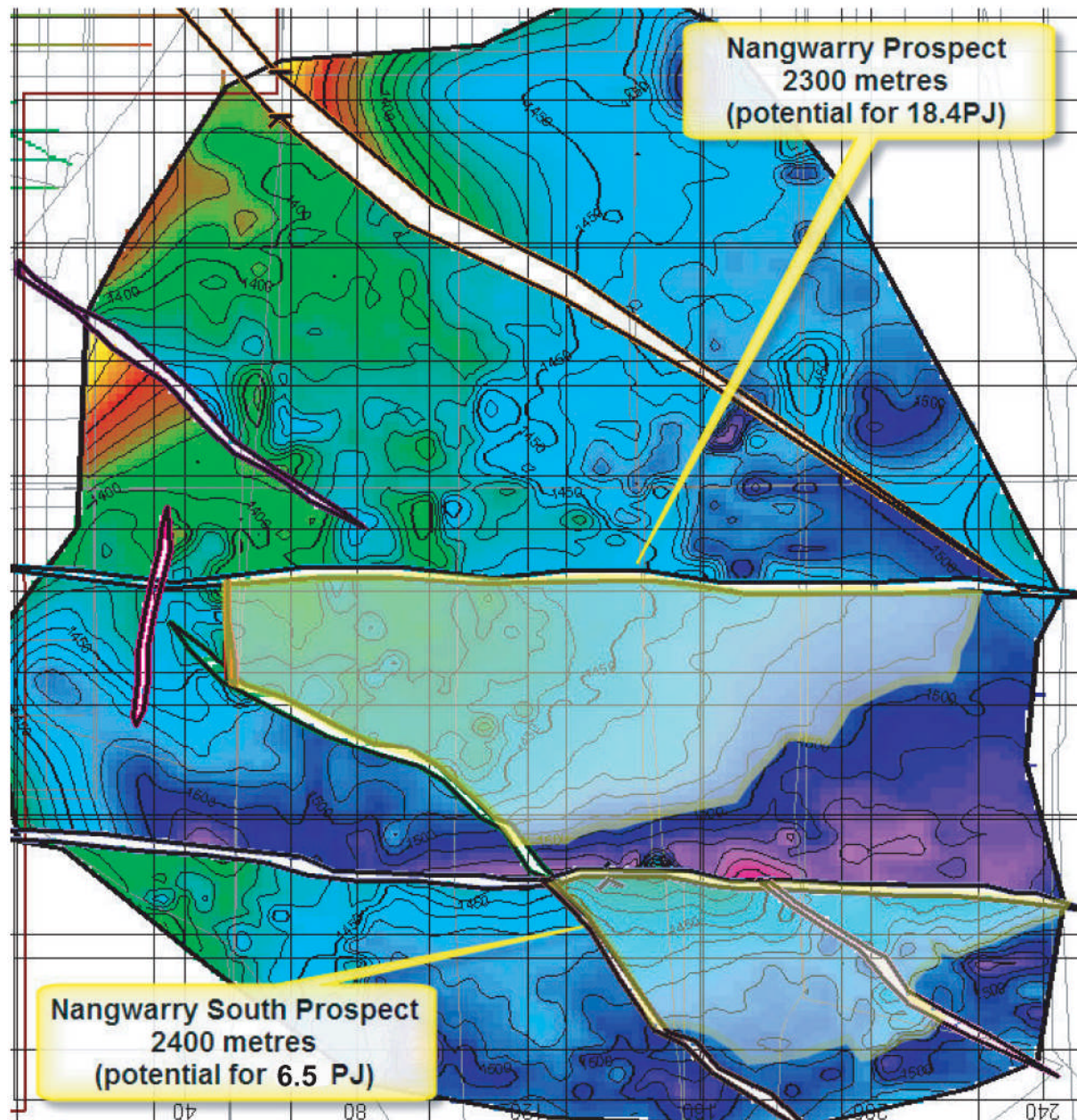
Otway Basin Core Project Area

- Interpretation of 3-D seismic shot in in Nangwarry & Burrungle areas is complete.
- To be followed by one well in each 3-D area to be drilled in 2010, negotiations with farminees are nearing conclusion.
- Current interests at drilling stage: Rawson 37.5%(operator),Hardie Energy 50% and Energetica Resources 12.5%.

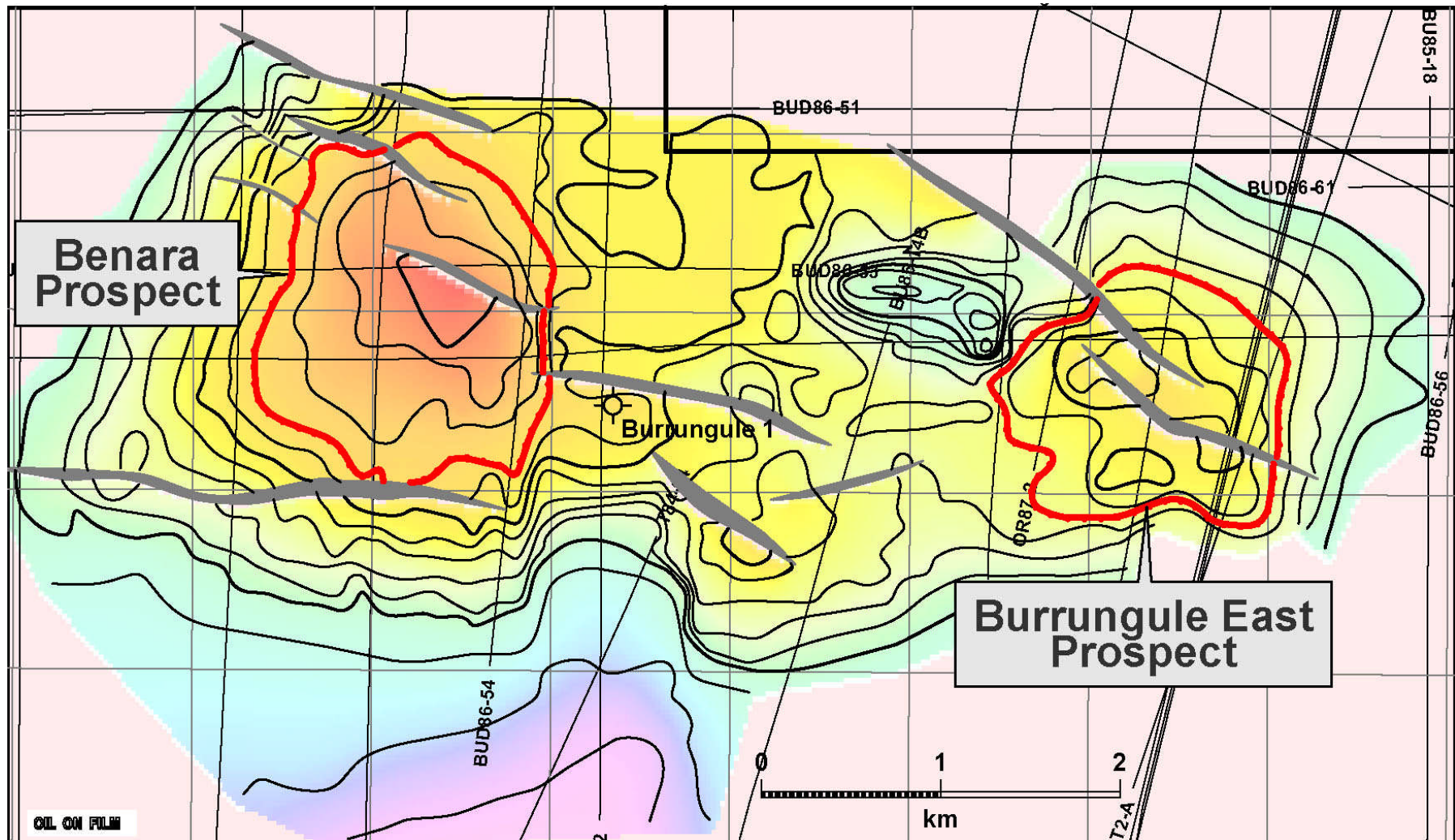
Otway Basin PEL 154 & PEL 155, S.A.



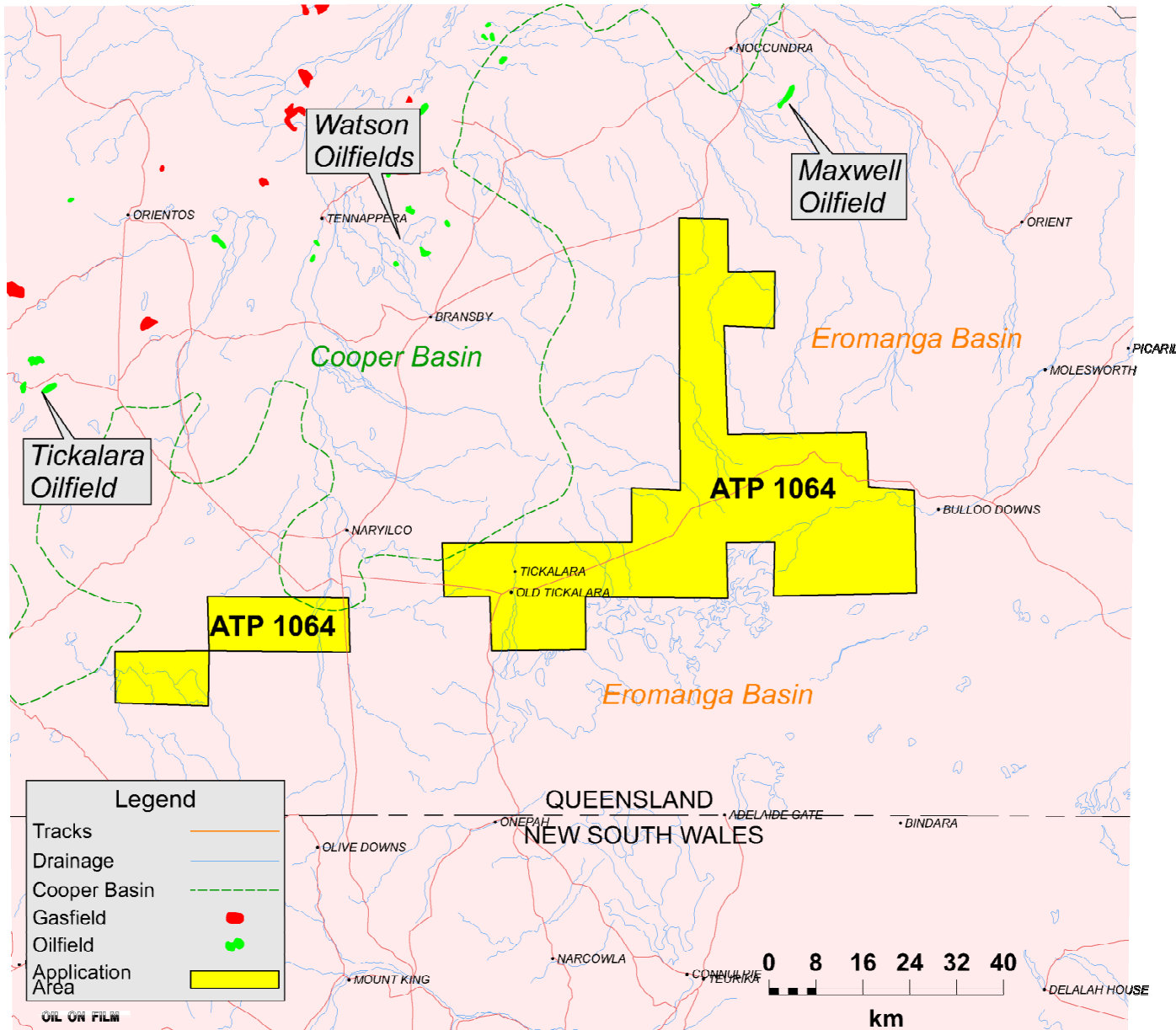
Nangwarry prospect at Near Top Pretty Hill



Benara and Burrungule East Prospects at Waare/Flaxman level



ATP 1064 Application Queensland



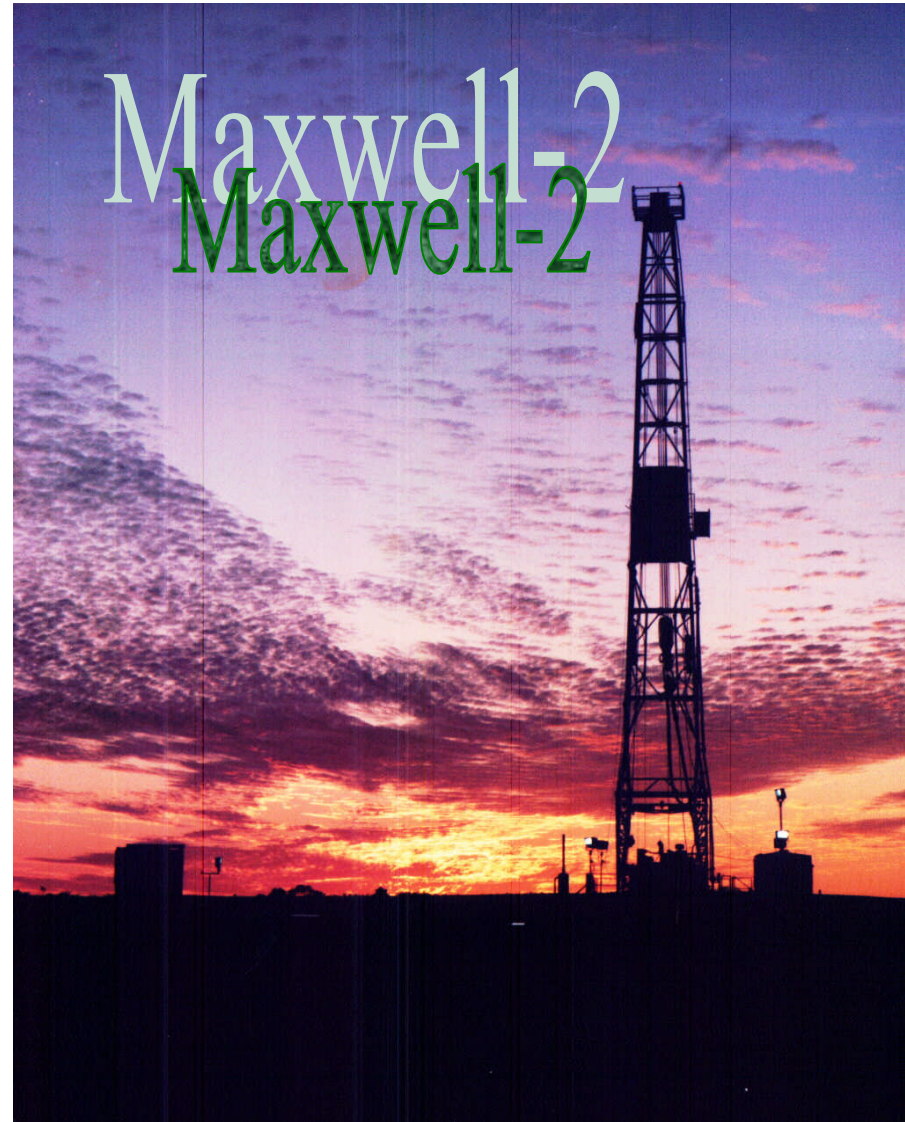
- Close to existing oilfields and infrastructure, on the flanks of the Cooper Basin.

- Maxwell Oilfield was first located using Soilgas geochemistry, available to Rawson.

- Initial low – cost exploration prior to seismic and drilling.

Maxwell Oil field

- Soil-Gas survey showed anomalies before seismic was recorded
- Oil discovered in Eromanga Basin, in 1982
- Similar geological setting to PEL 1064



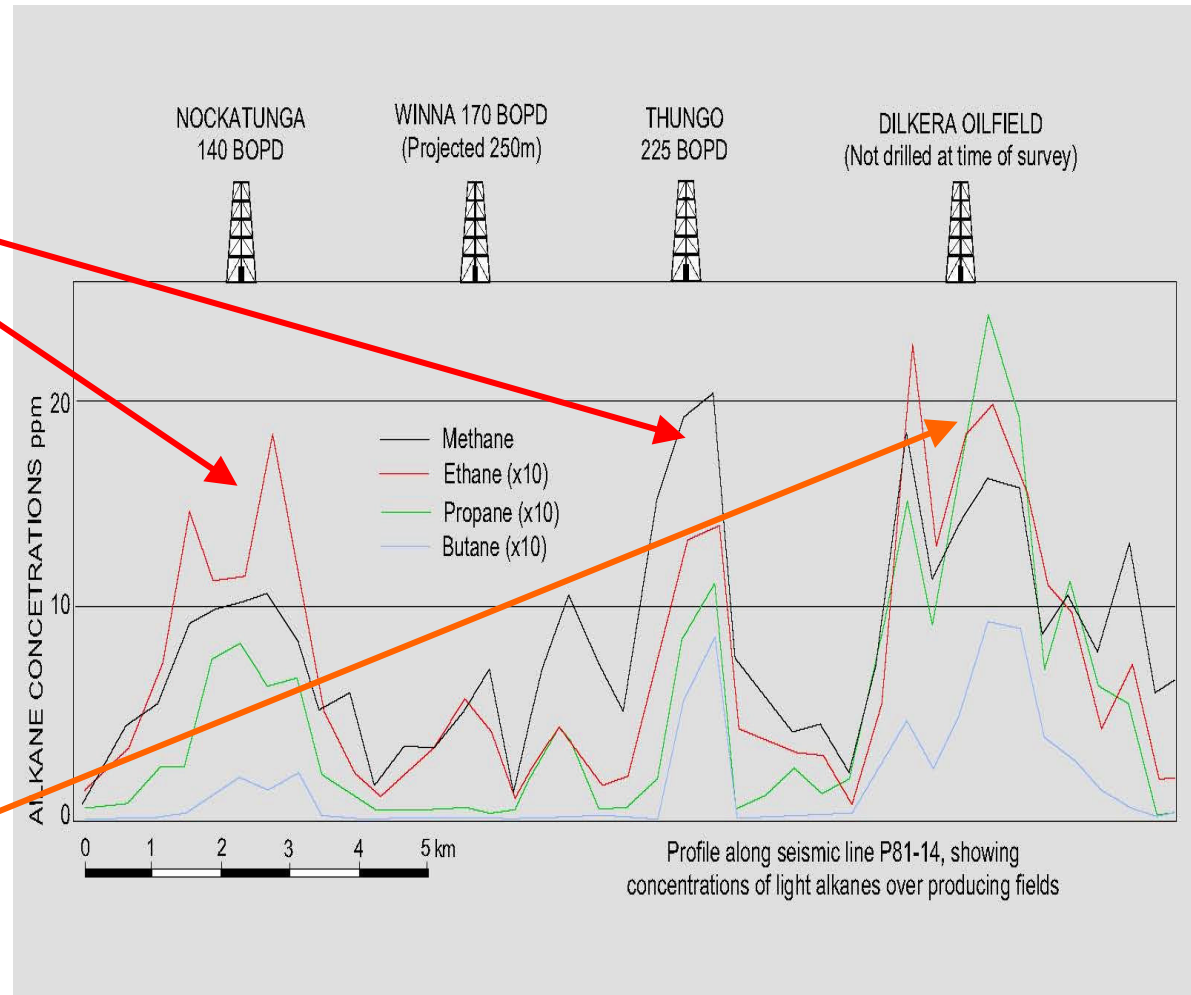
Soil-gas surveys along Seismic Lines

Nockatunga and Thungo fields show significant anomalies

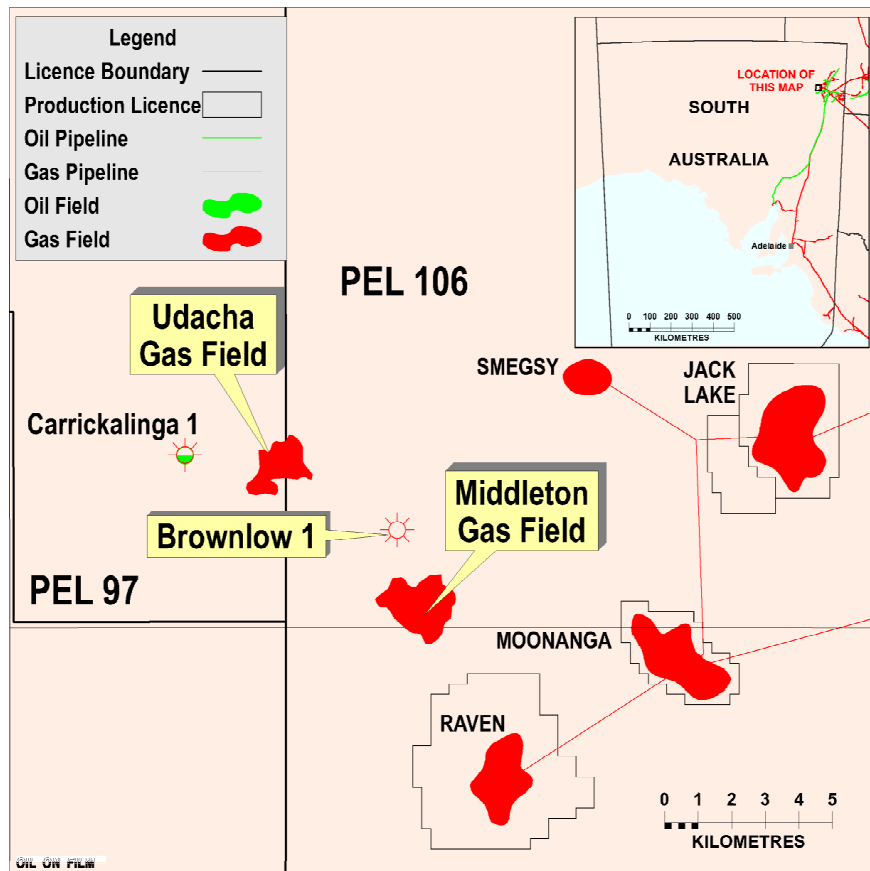
981 Line P81-14 Profile from soil-gas survey

Dilker structure showed anomaly

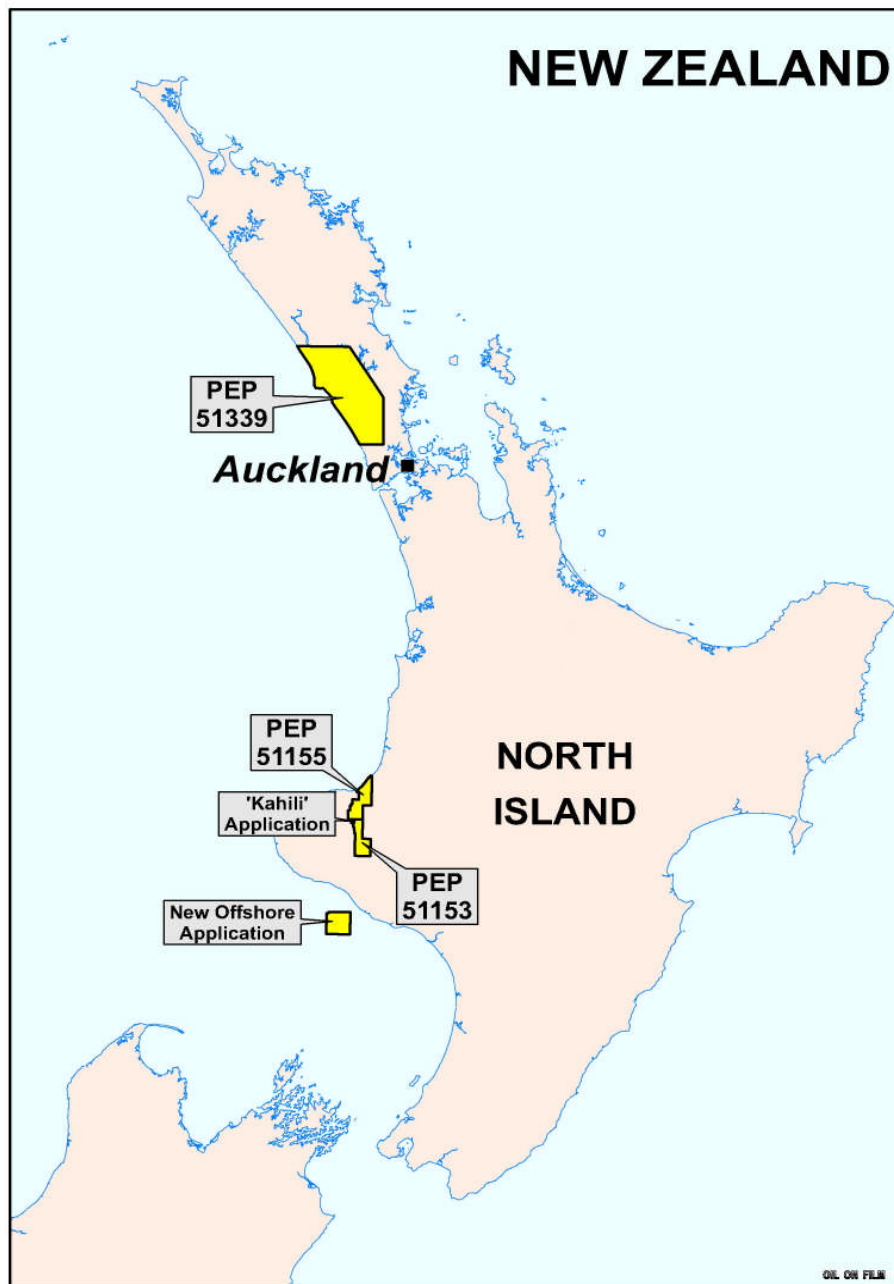
Dilker drilled after soil-



Udacha 1



- Beach Brownlow 1 discovery upgrades the area.
- Ongoing negotiations for gas sales.
- Rawson 10%.
- Beach hope to go to production in 2010/11.

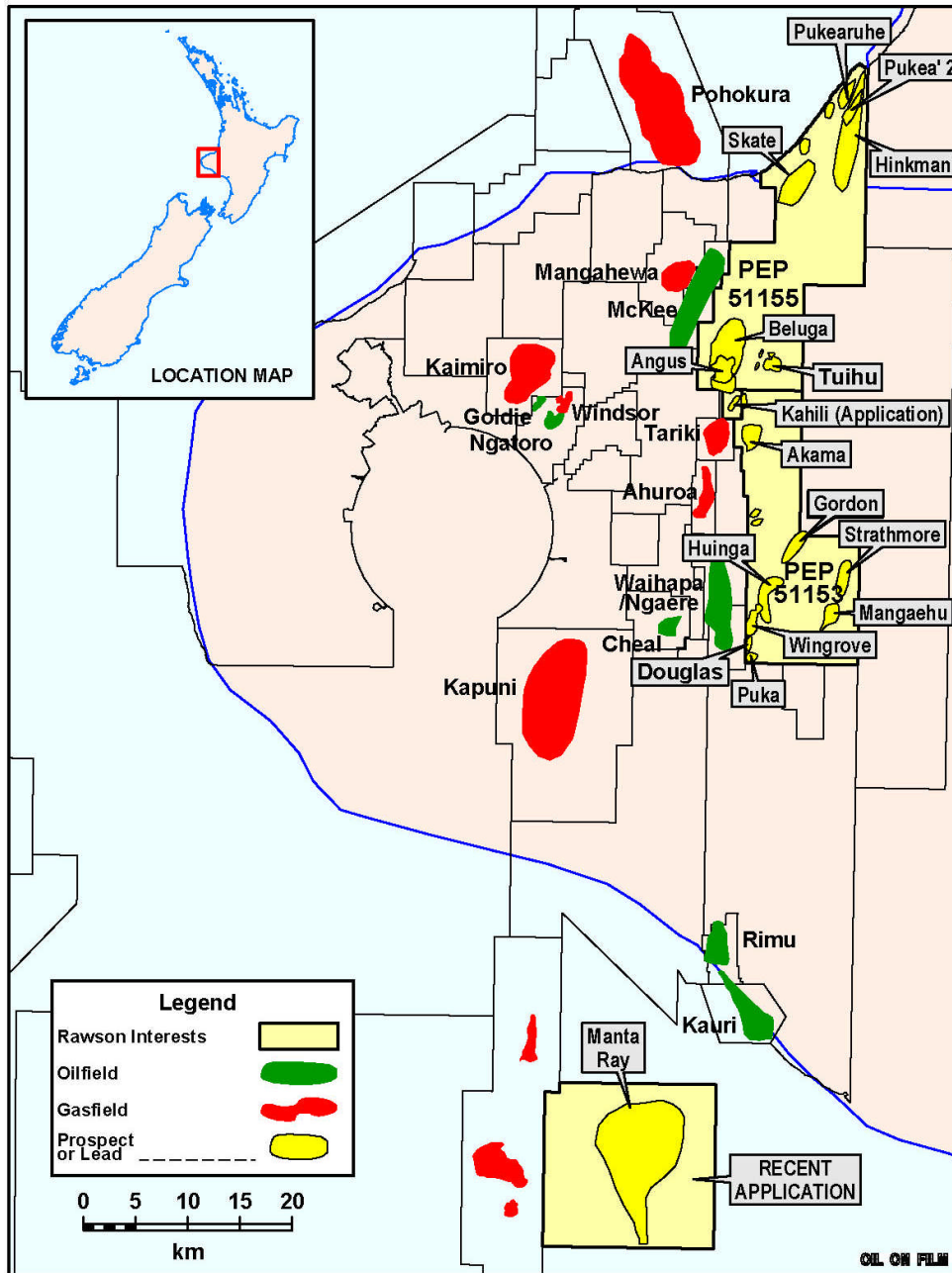


New Zealand

- Rawson Taranaki Pty. Ltd. has a 7.1% interest in Kea Petroleum Plc, which has a 100% interest in all the New Zealand permits. .
- Blocks PEP 51153 and PEP 51155 were awarded in September last year 51339 was awarded in the Northland area this year
- Two further applications have been made in the Taranaki Basin.
- The importance of the Company's share in Kea should not be understated, as Kea with a could develop into a major New Zealand oil and gas company

Taranaki Basin

- In PEP 51153 the year 1 program is to drill Wingrove-1, acquire & reprocess seismic plus conduct gravity and geochemical surveys.
- In PEP 51155 the year 1 program is to acquire and reprocess seismic and conduct gravity plus geochemical surveys, followed by the Beluga inferred 1 TCF gas project
- An aggressive drilling and exploration program will be initiated now funds have been raised by Kea Petroleum Plc.



Key Personnel

- John Conolly - Executive Chairman
 - John Doughty – General Manager
 - Keith Skipper – Independent Director
 - Paul Adams – Non Executive Director
 - Ian Morgan – Company Secretary
- and our close advisors
- Len Diekman – MD Energetica Resources
 - Bob Moffit – Chief Geologist
 - Clem Allsworth – Petroleum Landman

Company Strategy

- Focus on a mix of traditional Oil and Gas targets and Coal Seam Gas in areas close to production.
- Low risk oil prospects in the Surat Basin, near Moonie oil field, in the Taranaki basin near McKee & Waihapa oil fields and gas prospects in the Otway Basin close to Katnook and Haselgrove.

Company Strengths

- Operating as an active explorer for 11 years.
- Innovative exploration philosophy.
- Access to proprietary soil gas geochemical exploration.
- Experienced technical team.
- Extensive technical database.