

The title 'Western Desert Resources' is displayed against a background of a desert landscape with a cloudy sky. 'Western' is rendered in a 3D, metallic, textured font, while 'Desert' is in a solid red sans-serif font. Two horizontal orange lines are positioned above and below the word 'Resources'.

Western Desert

R E S O U R C E S

The title 'GOLD COAST RESOURCE SHOWCASE' is centered on a horizontal band with a light beige, woven fabric texture. The text is in a bold, light blue, sans-serif font.

GOLD COAST RESOURCE SHOWCASE

A wide-angle photograph of a desert scrubland landscape, showing a dense field of low-lying green and greyish-brown bushes and shrubs under a clear sky.

June 2009

DISCLAIMER

Where this presentation contains “forward-looking statements”, these statements are based on information and assumptions and involve expectations or beliefs as to future events or results as understood at the date of this presentation. All forward-looking statements are represented in good faith and have a reasonable basis at the time that they are made. However, such statements are subject to various risks and uncertainties, many of which are beyond the control of the company, which could cause actual results to differ materially from those represented by the forward-looking statements.

Any representation in this presentation should not be relied upon as to its accuracy or completeness nor as a recommendation or forecast by the company. The company advises that Independent financial advice be sought before concluding any binding decision made in connection with this presentation.

The representations made within this presentation should not be construed as either an offer to buy or sell any securities of the company in any jurisdiction.

The potential quantity and grade of any exploration target is conceptual in nature and there has been insufficient exploration to define a Mineral Resource. It is uncertain whether further exploration will result in a larger, smaller, or any Mineral Resource.

The information in this report that relates to Exploration Results, Mineral Resources or Ore Reserves is based on information compiled and / or assessed by John Fabray who is a Member of The Australasian Institute of Mining and Metallurgy. Mr. Fabray is employed by Western Desert Resources Limited. Mr. Fabray has sufficient experience which is relevant to the style of mineralisation and type of deposit under consideration and to the activity which he is undertaking to qualify as a competent person as defined in the 2004 Edition of the ‘Australasian Code for Reporting of Exploration Results, Mineral Resources and Ore Reserves’. Mr. Fabray consents to the inclusion in the report of the matters based on his assessment of the available information in the form and context in which it appears.

COMPANY OVERVIEW

Western Desert Resources Limited

DIRECTORS

<u>Chairman</u>	Mick Billing
<u>Managing Director</u>	Norm Gardner
<u>Non-Exec</u>	Mick Ashton Graham Bubner David Cloke
<u>Management</u>	John Fabray (Exploration Mgr) Laurie Ackroyd (CFO / Co Sec)

CAPITAL

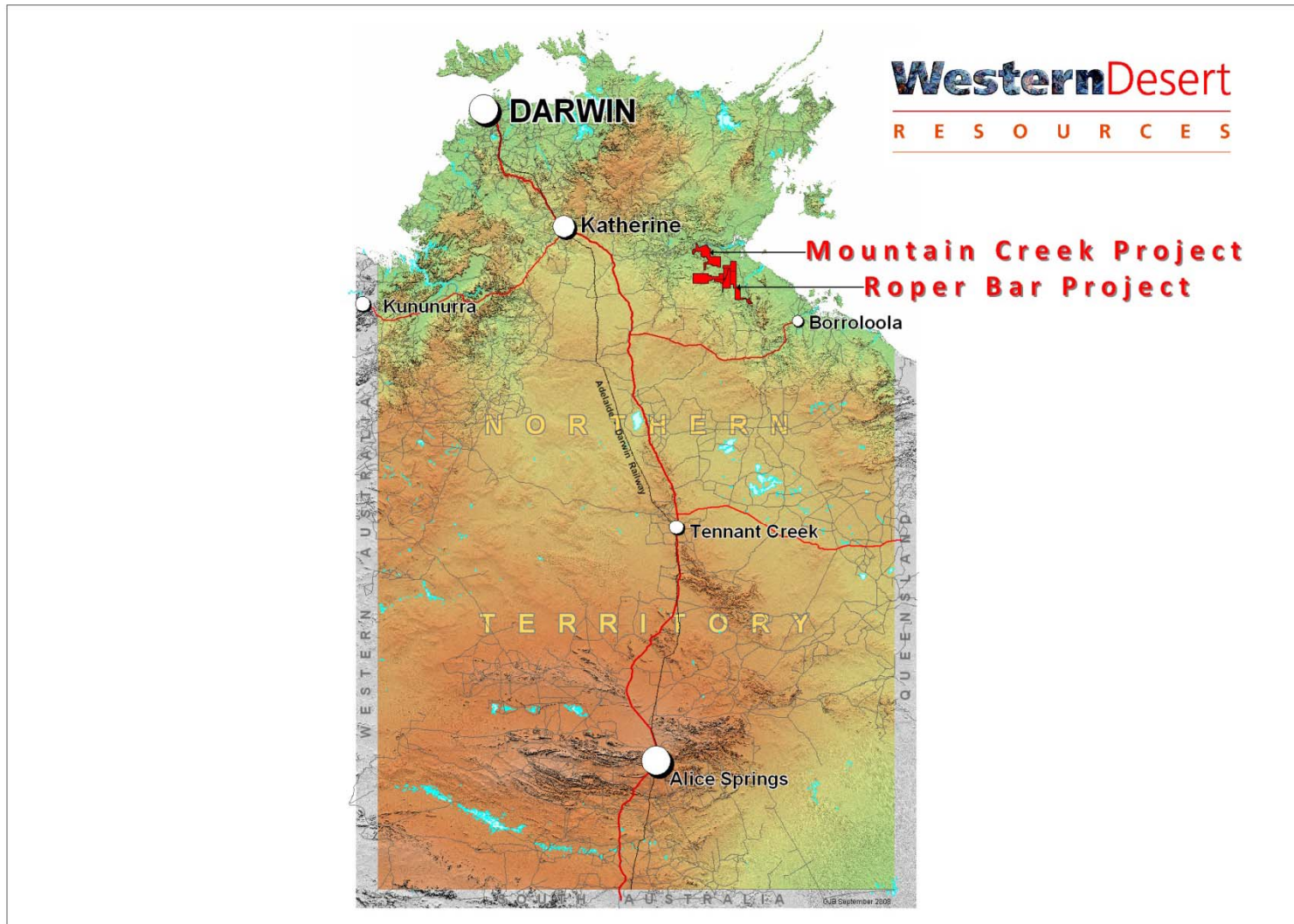
Shares	90 m
Options	16.9 m
Market Cap	A\$10.0 m
Cash	A\$1.5 m

TOP SHAREHOLDERS

Directors	24.4%
Genesis Resources	4.3%
ANZ Nominees	4.2%
<u>Total</u>	32.9%

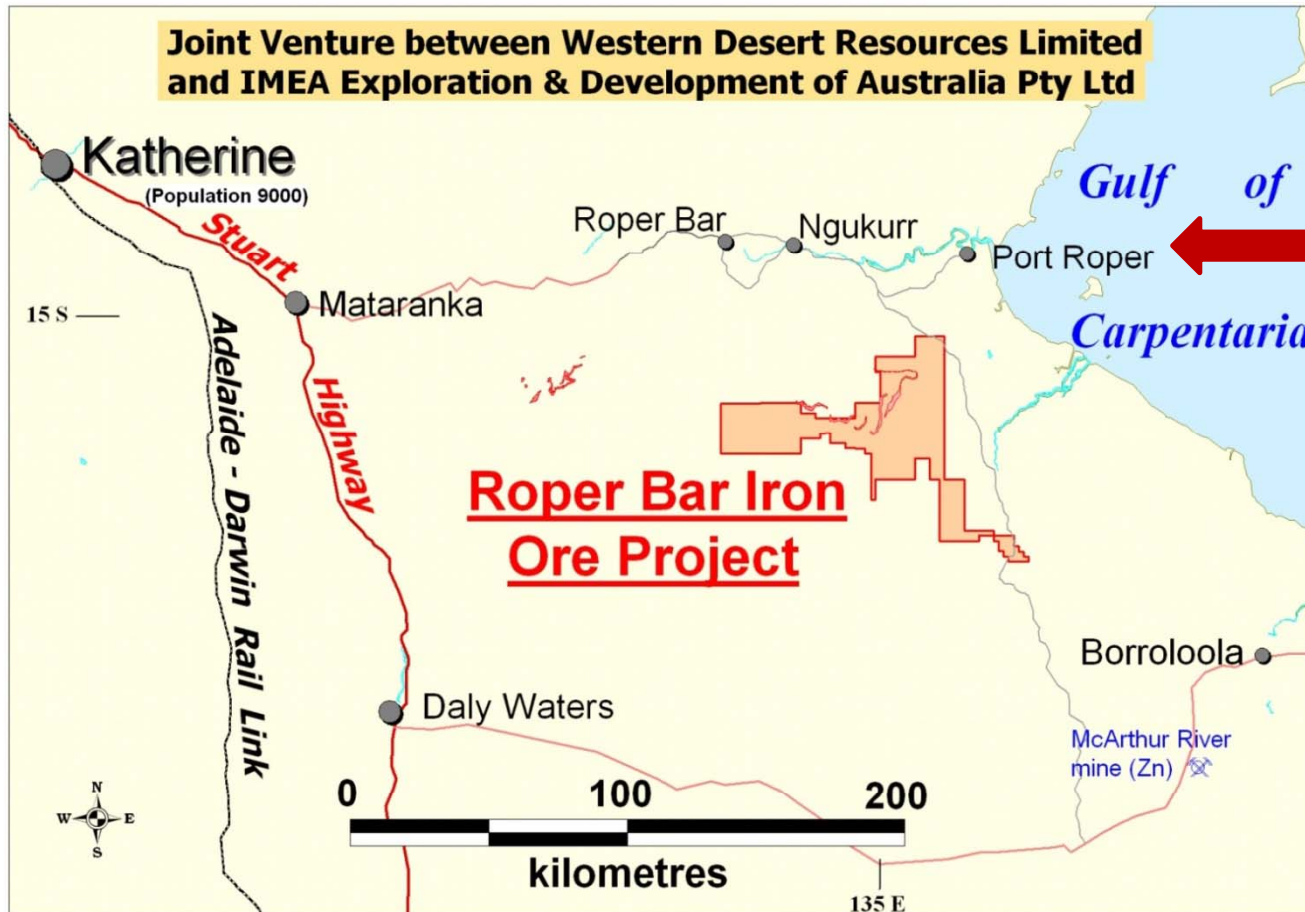
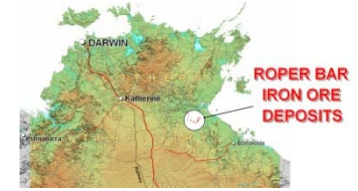
- A large company making project
 - Substantial outcropping mineralisation
 - Close to the coast
 - JV with major Japanese entity
 - JORC resource by end 2009
- An adjacent 100% WDR owned project
- Objective - Iron ore production within 5 years

Location Location Location



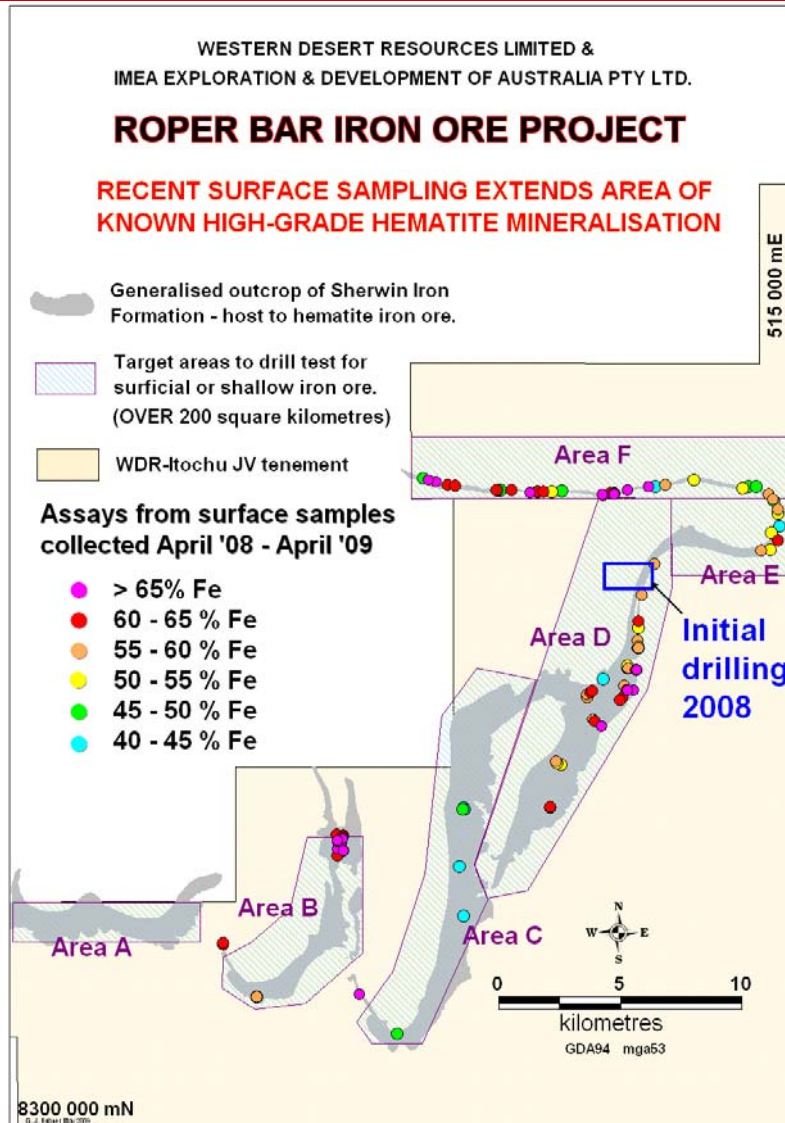
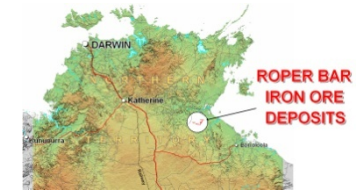
ROPER BAR IRON ORE JV

ITOCHU to earn up to 51%



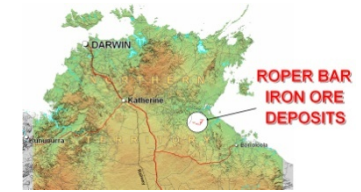
**PROXIMITY TO COAST
ALLOWS LOW COST
DELIVERY TO
MARKET**

**ITOCHU FUNDING UP TO \$15 million
to increase equity from 15% to 51%**



DRILLING PROGRAMME 2008

- Drilling in area D from October to November.
- 27 RC percussion and 5 diamond drillholes were completed to test for mineralisation under cover.
- Extensive (55km²) outcropping material not tested by drilling in 2008.
- Assays show intersections containing up to 60% Fe.
- Beneficiation testwork demonstrated upgrade to up to 65% Fe using Heavy Liquid Separation.

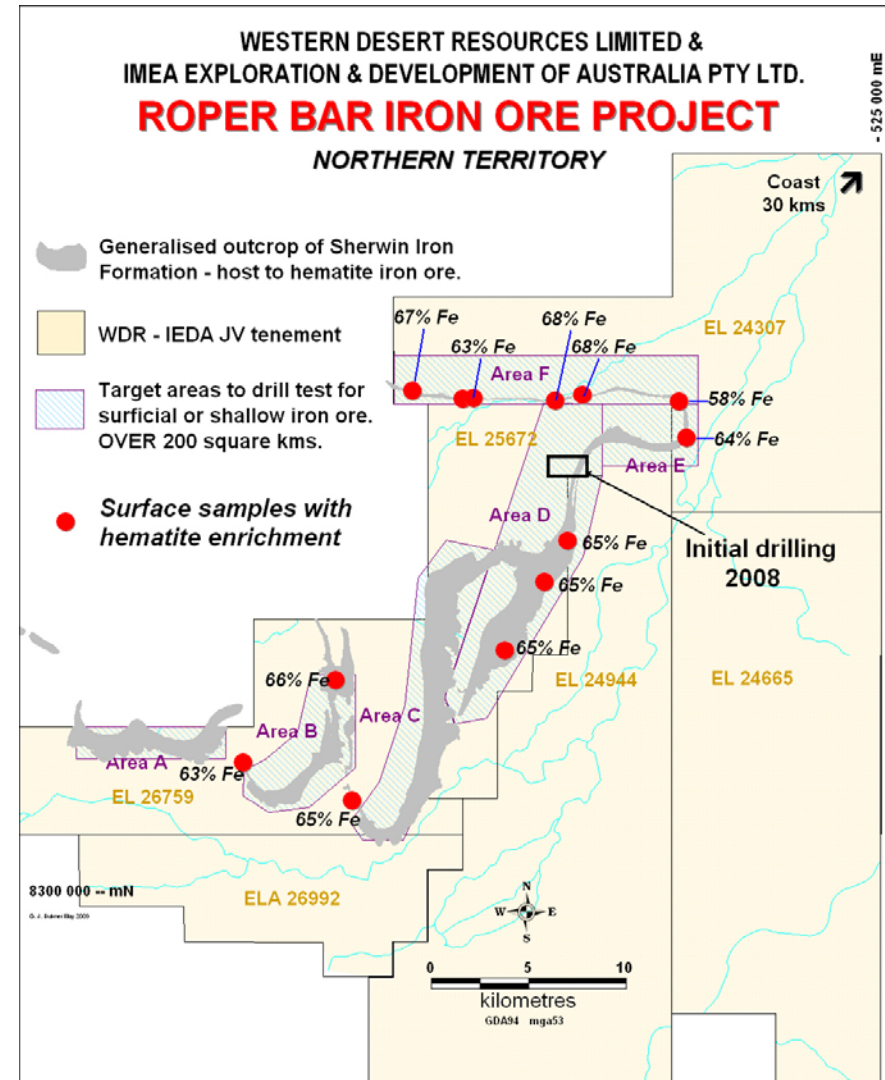


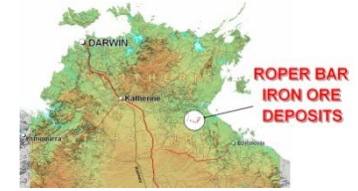
2009 PROGRAM

- RC Drilling program – 16,000 metres (commence June)
 - Area F
 - Area E
 - Area D (part)
 - Focus on outcropping mineralisation
 - Objective – Initial resource on outcrop areas with potential for direct shipping ore

- Diamond drilling
 - Material for metallurgical test work

- 2009 exploration program fully funded by ITOCHU



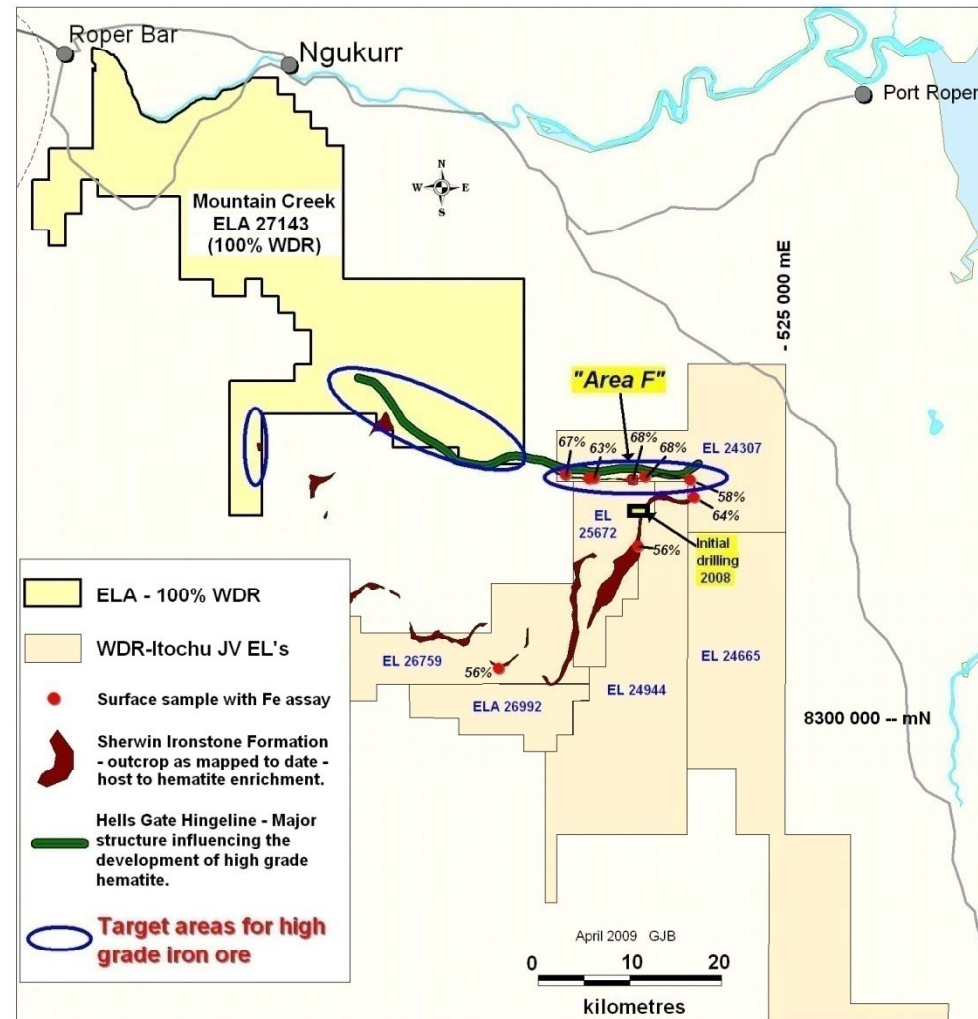


MOUNTAIN CREEK IRON ORE PROJECT

- WDR sole applicant
- Hosts outcropping Sherwin Ironstone extending from JV tenements
- Northern section also prospective for base metals

2009 Program

- Detailed mapping & sampling once tenement granted



GOLD PORTFOLIO

- A COMPANY MAKING EXPLORATION PROJECT
 - Pedigree location
 - OTHER PROJECTS
 - Resource with potential for modest level heap leach production
-

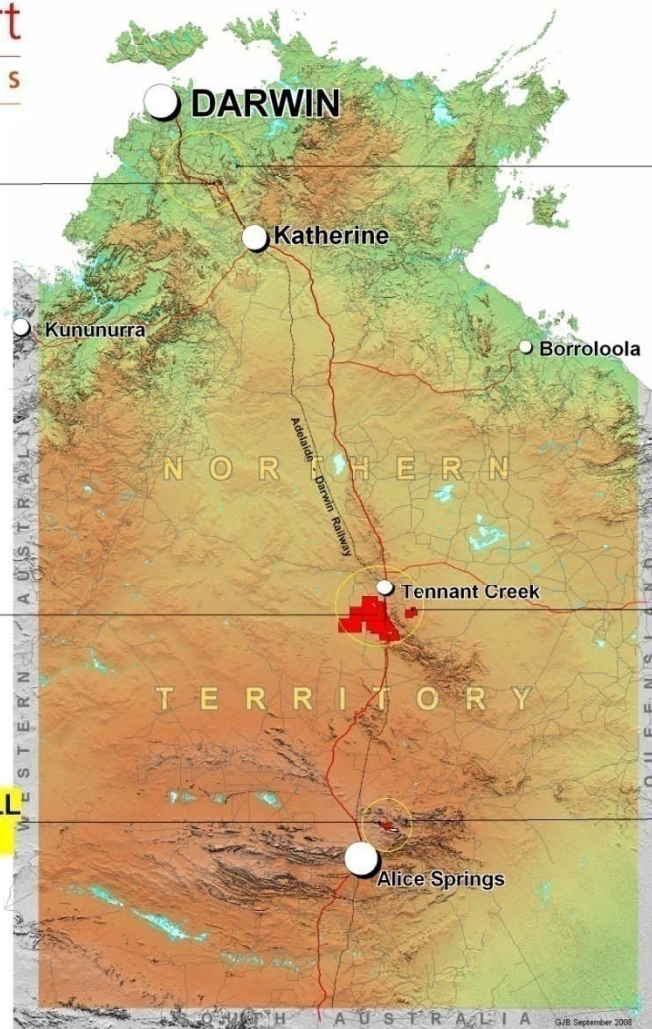
LOCATION LOCATION LOCATION

GOLD PROJECT AREAS

SPRING HILL

ROVER FIELD

SLIDING ROCK WELL
- WINNECKE



**Pine Creek
Goldfield**

**Tennant Creek
Goldfields**

**Winnecke
Goldfield**

Current as at
March 2009



WDR can earn up to 80%
of this project from TNG Ltd

Explorer 108 (Westgold Resources Ltd)

Recently defined Pb-Zn-Ag JORC resource

8.7Mt @ 2%Pb, 3.7%Zn and 20g/t Ag

Rover 4 (Adelaide Resources Ltd)

15m @ 2.07 % Cu and 2m @ 20 g/t Au

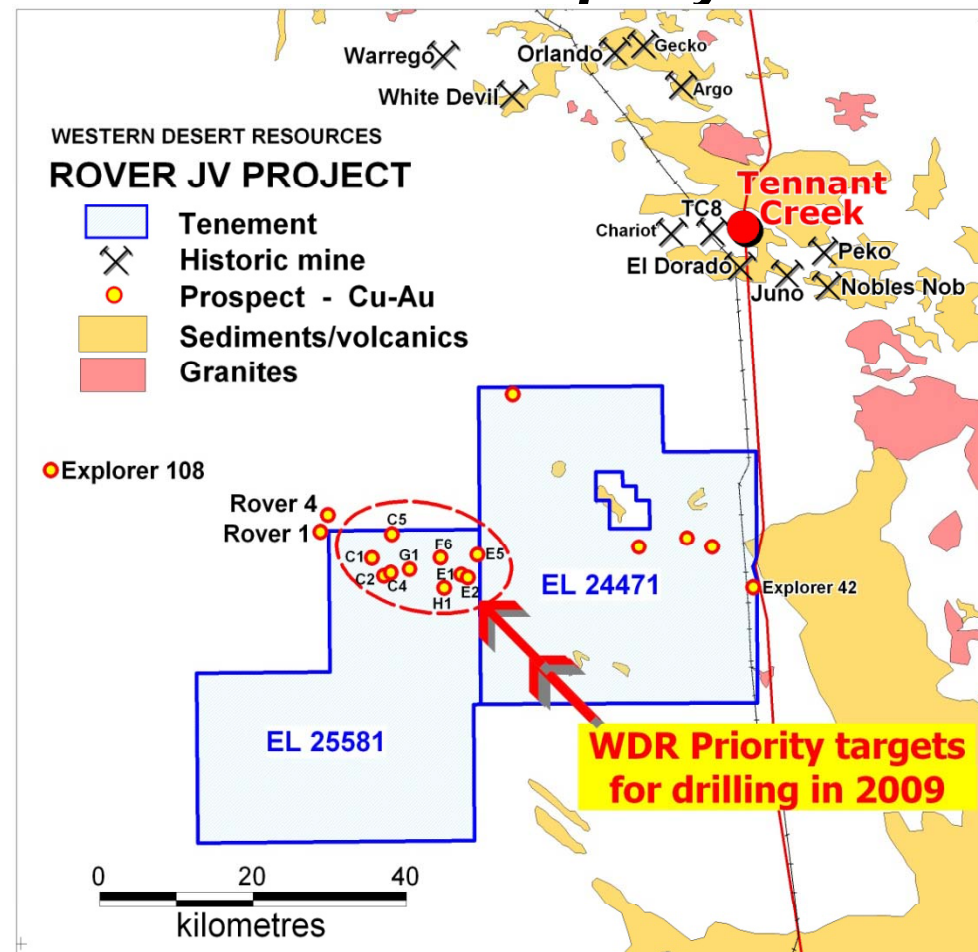
Rover 1 (Westgold Resources Ltd)

65m @ 11.0g/t Au, 0.75% Cu

49m @ 5.8g/t Au, 1.0% Cu

21m @ 33.5g/t Au, 0.6% Cu

A Potential Company Maker

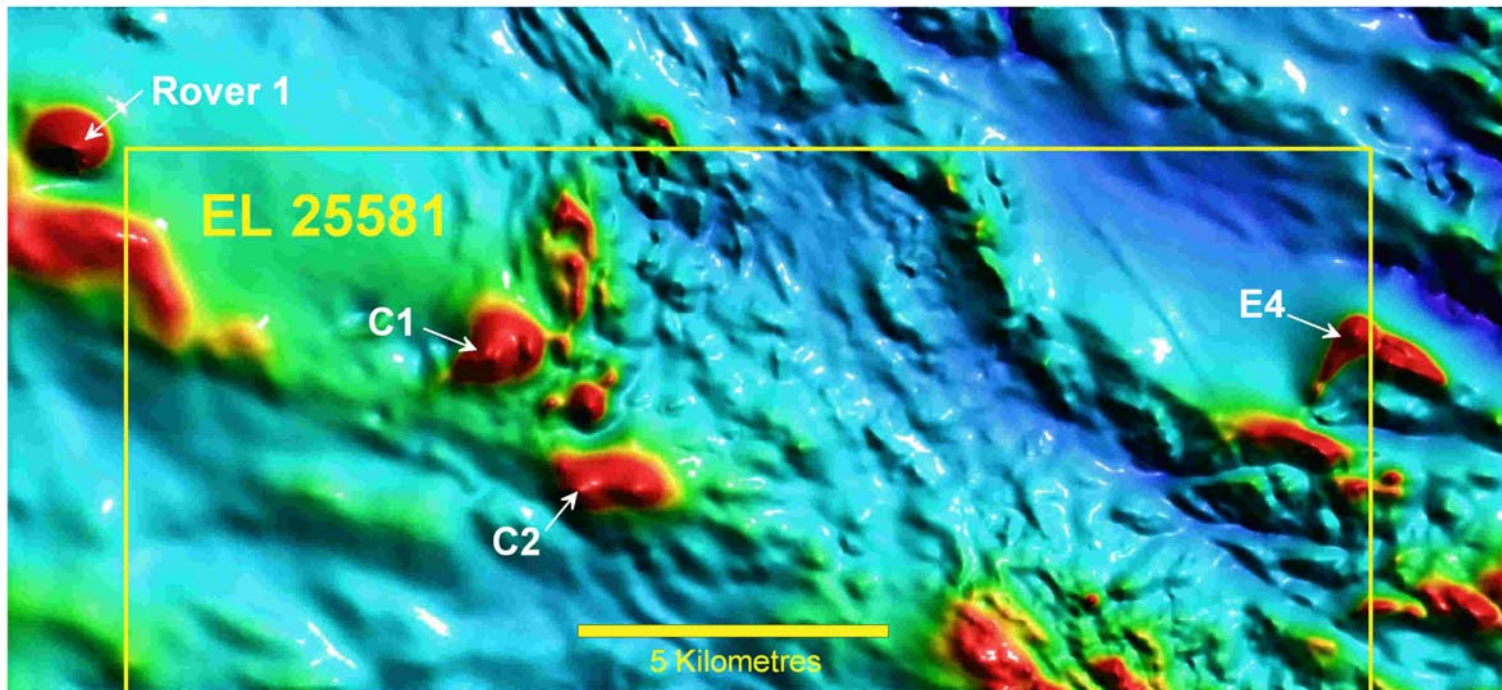


THE OBJECTIVE

WORLD CLASS GOLD / COPPER RESOURCE

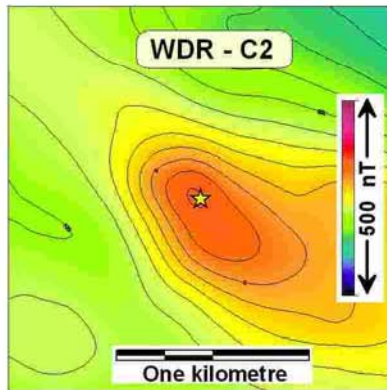


- Rover 1 is 800m north west of ELA 25581 boundary.
 - Access agreement successfully negotiated with Traditional Owners.
 - Grant of exploration licence imminent.
- ELA 25581 contains several magnetic anomalies which are priority targets. Low level detailed airborne magnetic survey recently completed.

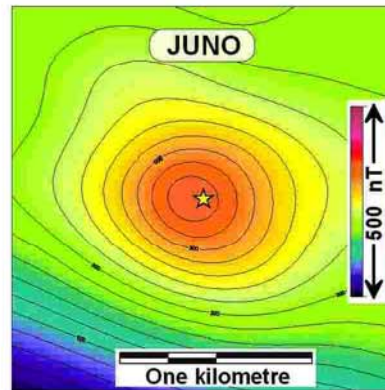


- WDR are earning up to an 80% interest in 2300 sq km of this emerging Paleoproterozoic analogue of the nearby Tennant Creek Goldfield (5million ozs Au, 500k tonnes Cu).
- Highly prospective for deposits such as:
 - White Devil 1.1Mt @18.0 g/t, Au
 - Nobles Nob 2.0Mt 19.5 g/t Au
 - Juno 0.45Mt @ 56 g/t Au
 - Warrego 6.9 Mt @ 6.6g/t Au, 2.5% Cu
- Explorer 108 comprises 8.7mt@5.6% Pb+Zn containing 320kt Zn, 171kt Pb, 5.6mozs Ag, 71,000 ozs Au.
 - Explorer 108 is an order of magnitude greater than historical Tennant Creek orebodies
- Rover 1 ironstone is twice the size of Warrego ironstone

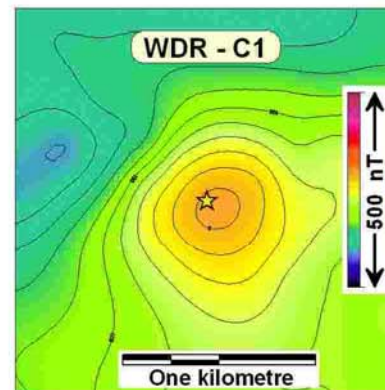
Magnetic Anomaly Comparison



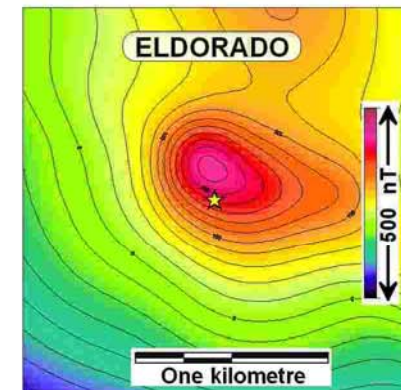
**WDR Priority
drill target**



*Produced 25.3 tonnes of
gold at 56.1 grams/tonne*



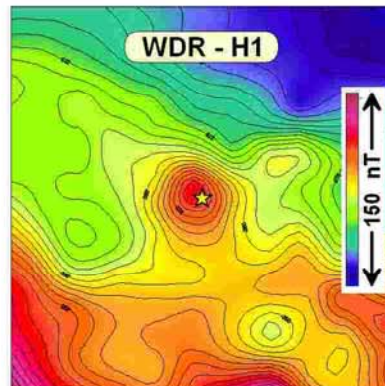
**WDR Priority
drill target**



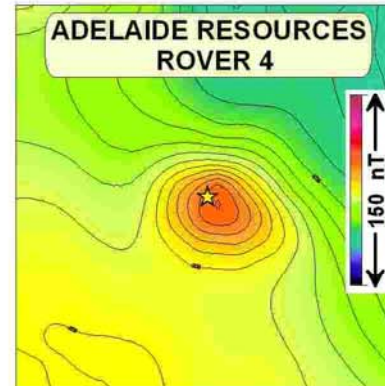
*Produced 3.3 tonnes of
gold at 22.7 grams/tonne*



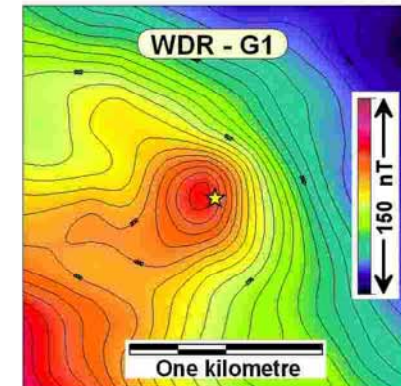
*Recent drill results include:
65m @ 11 g/t Au; 0.75% Cu
49m @ 5.8 g/t Au; 1% Cu*



**WDR Priority
drill target**



*Recent drilling includes:
15m @ 2.07% Cu &
2m @ 20 g/t Au*



**WDR Priority
drill target**

- **STAGE 1**
 - Aeromag survey
 - »Confirm drill targets
 - Timing – completed March 2009
- **STAGE 2**
 - 3 – 4 hole diamond drill program
 - Timing – August/September 2009

WESTERN DESERT RESOURCES LIMITED

ACN 122 301 848

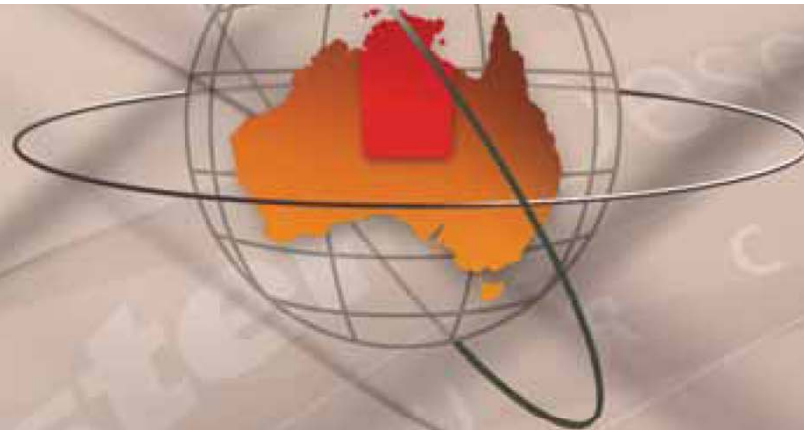
SUMMARY

Roper Bar iron ore project

- Substantial outcropping ironstone
- Funded by ITOCHU
- JORC resource in 2009

Rover gold/copper Project

- World class potential
- Drilling in 2009



THANK YOU