

Bonanza Gold Results From Golden Crown Deeps

Drilling at the Golden Crown Mine continues to confirm high-grade gold extensions of the main quartz reef. The latest hole returning a bonanza intercept of;

- 9.3 metres @ 14.65g/t Au from 712 metres, Including 3.4 metres @ 37.54g/t Au from 715.9 metres (main reef)

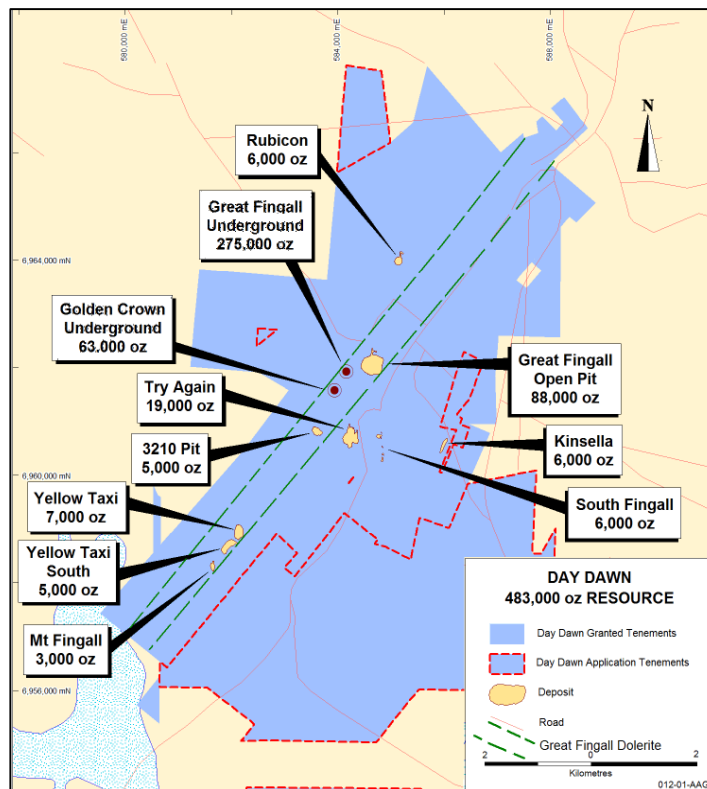
The ore system remains open down plunge.

Aragon Resources Limited (ASX: AAG; "Aragon" or "Company") is pleased to announce that its latest diamond hole (CMD 00021) targeting extensions to the high-grade Golden Crown Reef has returned 9.3 metres @ 14.65g/t Au from 715.9 metres.

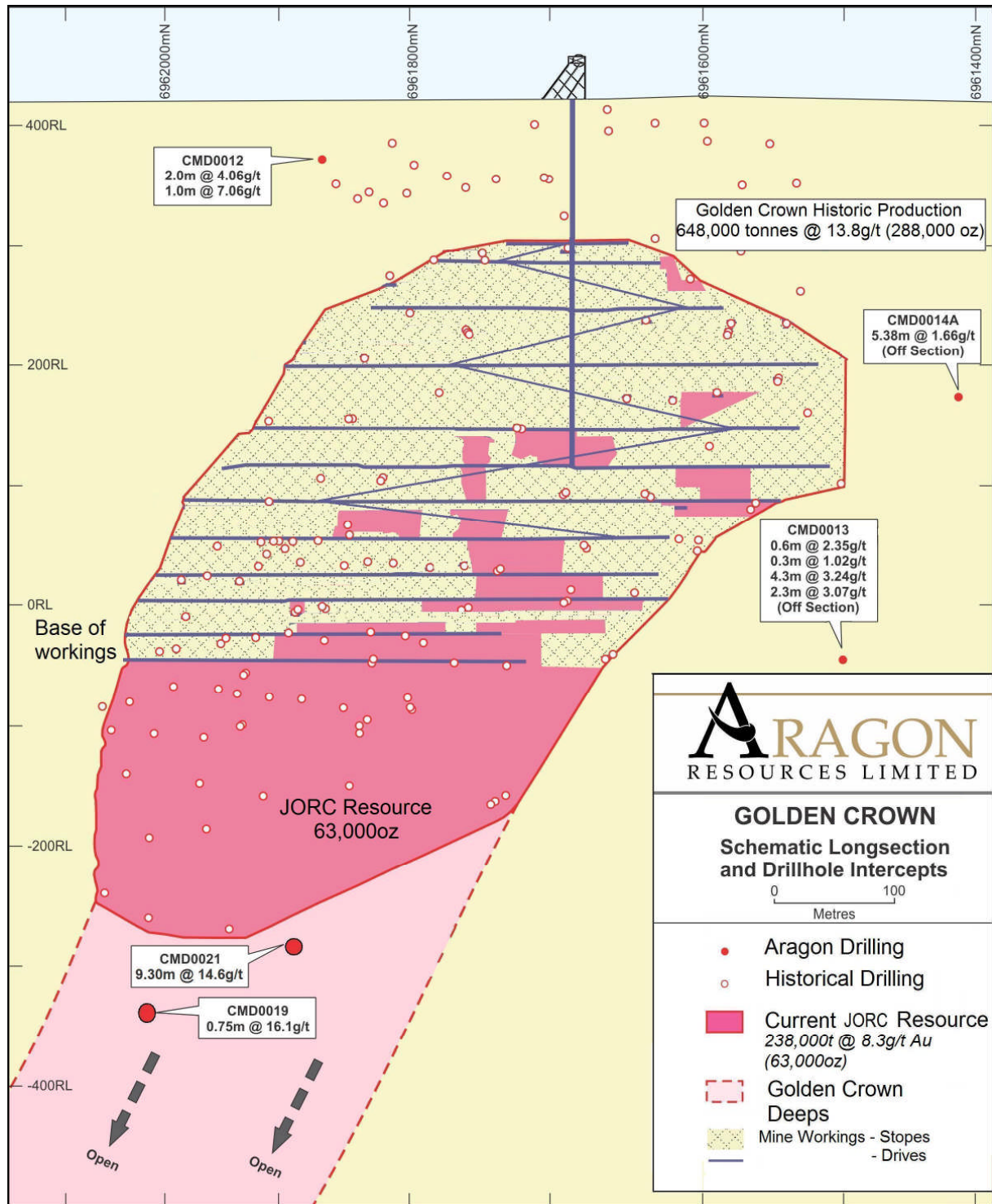
The intercept is considered to have intersected the down-plunge southern portion of the main reef approximately 40 metres below the current resource boundary and includes apparent quartz splays and wall-rock alteration of the main reef. It is estimated that the true width of the intercept is approximately 7.5 metres at this location.

Within this intercept, the main reef is manifested as a 3.4 metre quartz reef assaying 37.54g/t Au and which also exhibits abundant visible gold.

A wedge cut from CMD0021 has also been completed and has intersected the main reef approximately 15 metres to the east at a similar depth and has returned a visually similar lode. The results of this hole are yet to be received.



Current resources at the Day Dawn Mining Centre



Golden Crown resource long section and drill-hole intersections

Drill-hole Summary

Hole ID	Northing	Easting	RL	Dip	Azi	From (m)	To (m)	Down hole Interval (m)	Grade g/t Au	Comments
CMD0021	6961621	583664	427	-80	055	712.0	721.3	9.3	14.65	Including 3.4m @ 37.54g/t Au (Main quartz reef)

Note: All descriptions and locations stated are as designed coordinates in MGA-94. Results shown as down-hole intervals and compiled applying 1g/t cut-off. Intervals include maximum of 1 metre down-hole internal dilution. Assays by 50g Fire Assay with AA finish.

Golden Crown Mine

The Golden Crown mine is located within the Day Dawn goldfield approximately 6km south of Cue in the Murchison Goldfield of Western Australia.

The quartz reef is located just 500 metres south of the historically significant Great Fingall Mine which has produced 1.9 million tonnes @ 19.5g/t Gold for approximately 1.2 million ounces. Production to date from the Golden Crown Mine is recorded as 648,000 tonnes @ 13.8g/t Gold for approximately 288,000 ounces.

Golden Crown was first mined in 1897 and until 1902 was developed to a vertical depth of 80 metres on relatively low gold grades resulting in minor gold production. This activity was coincident with mining on the nearby Great Fingall reef where bonanza grades and generous widths of reef were encountered from surface.

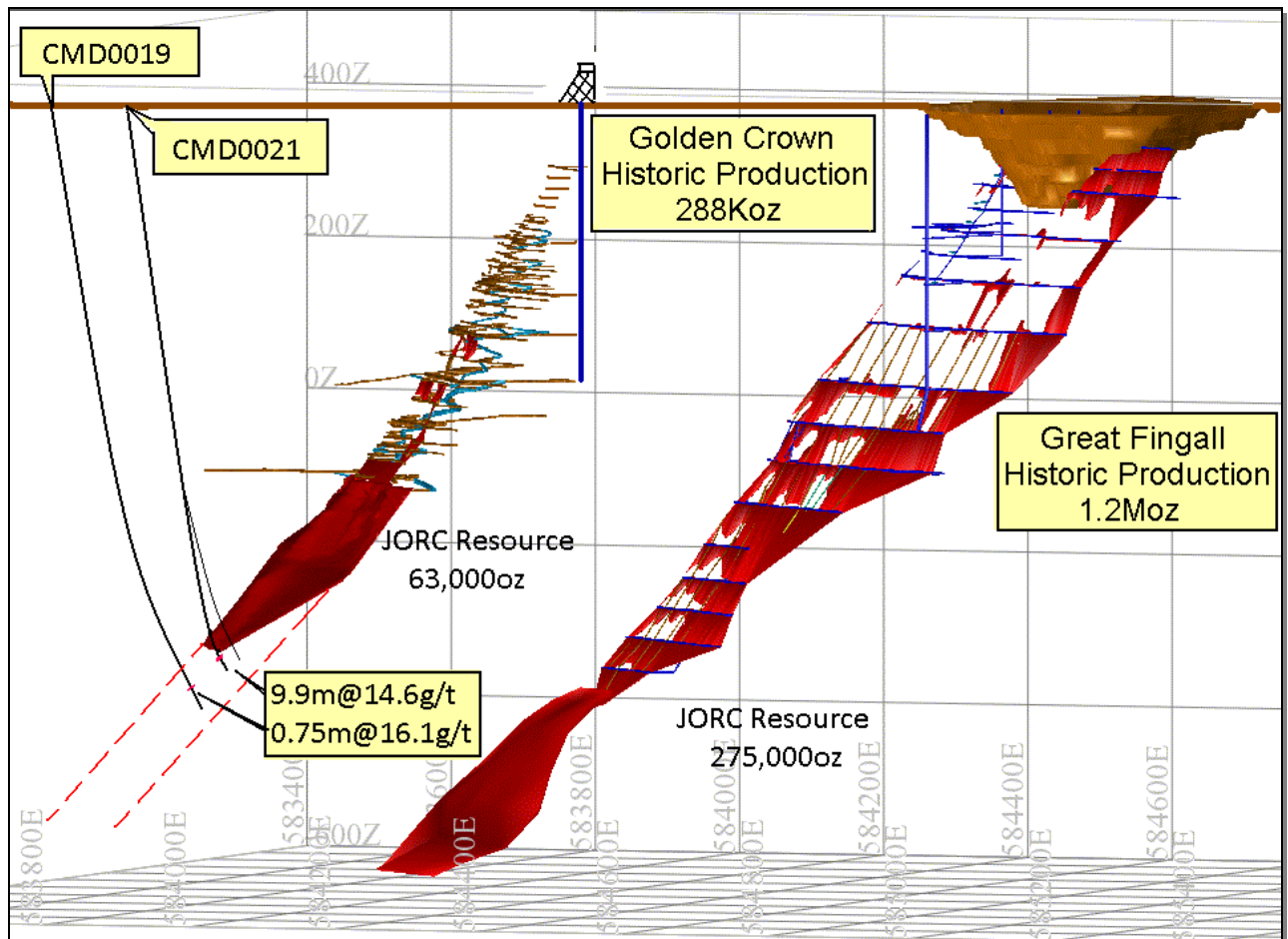
In 1935, the mine was acquired by Western Mining Corporation and after a modest diamond drilling program the lease was relinquished due to lower than expected results. It was 1969 when Australian Consolidated Mines ('ACM') acquired the mining rights and additional drilling of the near surface area again returned lower than expected results. It was not until 1983 that ACM drill tested deeper zones and discovered that the old workings were actually in what appears to be a depletion zone. Further drilling beneath a vertical depth of 120 metres returned highly encouraging results and ACM commenced development of the mine by shaft sinking in December 1983. The mine was officially opened in May 1986 as an integrated shaft and small on surface CIP plant.

In 1991, ACM was taken over by Posgold, a division of Normandy Mining Limited. Mining continued and the ore was then trucked to and processed at the Big Bell plant in a blended feedstock with Big Bell open pit ores. Posgold continued to operate Golden Crown for a further five years (up to 1996) before placing the mine on care and maintenance. Mining was halted apparently due to the fact that development could not keep up with production demands brought on by the large capacity 3.2mtpa Big Bell processing facility.

The current remaining total identified mineral resource estimate for Golden Crown contains 63,000 ounces of gold and the nearby Great Fingall Mine contains 275,000 ounces of remnant gold resources (refer to appendix 1 for JORC categorisation breakdown).



Golden Crown Head frame 1990's



Oblique section looking toward the north west showing remnant resource in red and recent drill results from Golden Crown Deeps

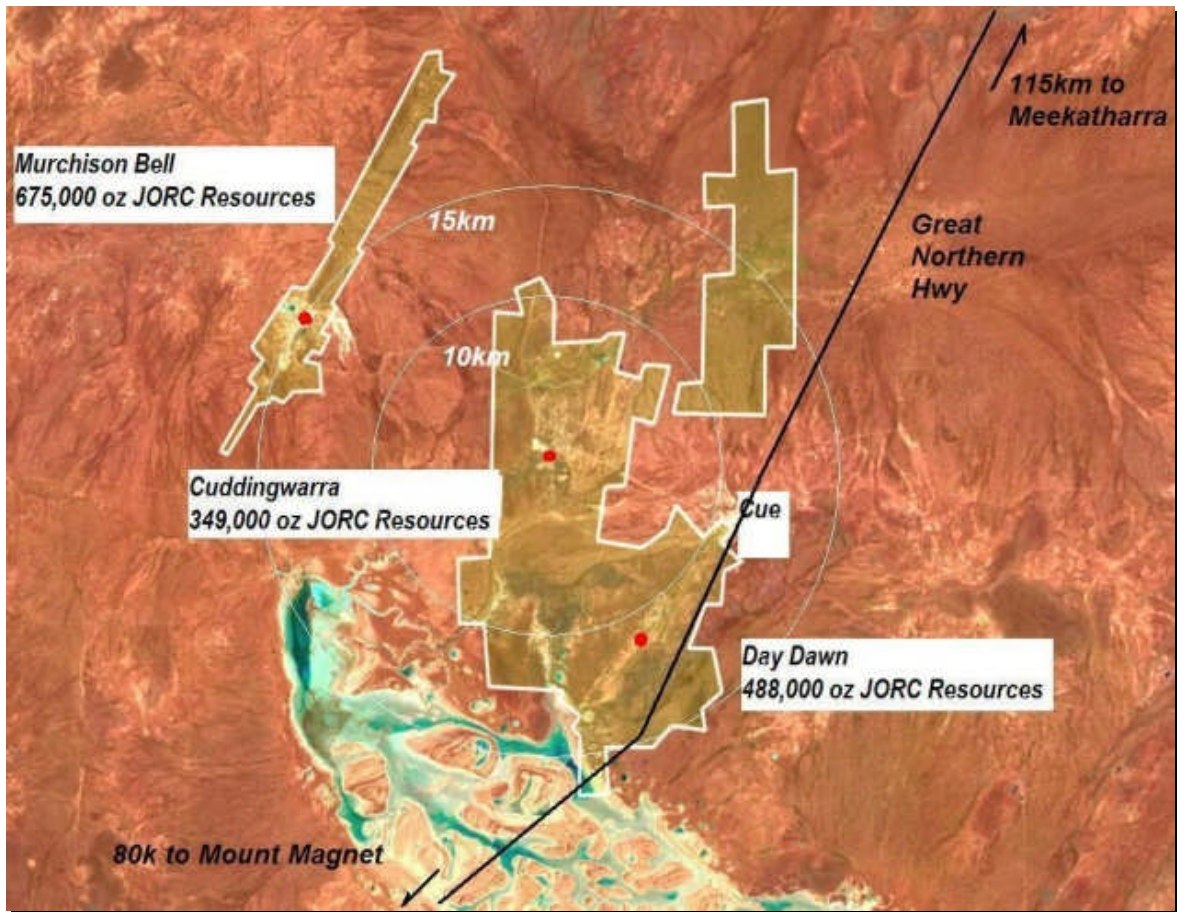
Aragon’s Strategic Plan

Aragon holds a land position in the Central Murchison of 33,400 hectares including the three historically significant goldfields of Big Bell, Cuddingwarra and Day Dawn. Historic production from the Aragon land package totals 5 million ounces. The total estimated resource inventory within Aragon’s tenure is 11,490,000 tonnes @ 4.0g/t Au containing 1.5 million ounces (refer to appendix 1 for JORC categorisation breakdown).

Aragon refers to the total package as its Central Murchison Gold Project (“CMGP”). The Golden Crown mine is just one of the exciting opportunities for future gold production in this impressive package.

Aragon’s strategic plan is to delineate sufficient mining reserves from its resource base and develop multiple mines in the CMGP to enable sustainable gold production at approximately 100,000 ounces per annum with an initial 6 to 8 year mine life.

Aragon is currently evaluating the defined resources, drill testing for primary extensions and performing open-pit and underground mining studies as integral steps in fulfilling its strategic plan. It is anticipated that these works will continue through 2010 followed by the completion of a detailed feasibility study during 2011.



Current resource at each goldfield comprising the Central Murchison Gold Project

Appendix 1 - Identified Mineral Resource Estimates

Mining Centre/ Deposit	Measured			Indicated			Inferred			Total Resource		
	Tonnes ('000s)	Au g/t	Au Oz	Tonnes ('000s)	Au g/t	Au Oz	Tonnes ('000s)	Au g/t	Au Oz	Tonnes ('000s)	Au g/t	Au Oz
Murchison Bell												
1600N/Shocker				415	2.5	33,000	359	3.2	37,000	774	2.8	70,000
Big Bell*				3,200	4.7	484,000	700	4.2	95,000	3,900	4.6	578,000
Fender				71	4.1	9,000				71	4.1	9,000
Sub-total				3,686	4.4	526,000	1,059	3.9	132,000	4,745	4.3	657,000
Cuddingwarra												
Black Swan				222	3.5	25,000	1	1.3		223	3.5	25,000
Black Swan South				315	3.5	35,000	1,816	3.8	224,000	2,131	3.8	259,000
Chieftain				50	3.1	5,000	75	3.4	8,000	125	3.3	13,000
City of Chester				28	2.3	2,000	82	2.4	6,000	110	2.4	8,000
City of Sydney	4	1.6		62	2.1	4,000				65	2	4,000
Golden Gate				65	3	6,000	1	2.6		66	3	6,000
Rheingold							89	3.8	11,000	89	3.8	11,000
Rheingold South	23	3.3	3,000	82	3.6	10,000	96	3.4	11,000	202	3.5	23,000
Sub-total	27	3.0	3,000	824	3.3	87,000	2,160	3.7	260,000	3,011	3.6	349,000
Day Dawn												
3210				50	3.3	5,000				50	3.3	5,000
Golden Crown*				95	7.5	23,000	144	8.8	41,000	238	8.3	63,000
Great Fingall				349	1.9	21,000	1,500	1.4	67,000	1,849	1.5	88,000
Great Fingall*				755	10	243,000	147	6.8	32,000	902	9.5	275,000
Kinsella	1	2.9		54	3.1	5,000				55	3.1	6,000
Mt Fingall							30	3.1	3,000	30	3.1	3,000
Rubicon	19	2.9	2,000	50	2.3	4,000	12	1.3		80	2.3	6,000
South Fingall				36	2.8	3,000	28	3.1	3,000	65	3	6,000
Try Again	1	1.8		12	3.2	1,000	178	3.1	17,000	192	3.1	19,000
Yellow Taxi				80	2.4	6,000	15	2.9	1,000	94	2.5	7,000
Yellow Taxi South							37	4.3	5,000	37	4.3	5,000
Sub-total	21	2.8	2,000	1,481	6.6	311,000	2,091	2.5	169,000	3,592	4.2	483,000
Sub Total In situ	47	3.3	5,000	5,992	4.8	924,000	5,309	3.3	561,000	11,348	4.1	1,490,000
Stockpiles												
Great Fingall				108	1	3,000				108	1.0	3,000
Fingall Sands				34	1.2	1,000				34	1.2	1,000
Stockpiles				142	0.9	4,000				142	0.9	4,000
TOTAL	47	3.3	5,000	6,133	4.7	928,000	5,309	3.3	561,000	11,490	4.0	1,494,000

Central Murchison Gold Project – JORC Resource Table

Enquires:

Paul Benson – CEO/Executive Director
paul.benson@aragonresources.com.au

Simon Eley – Executive Director
simon.eley@aragonresources.com.au

Phone: +61 8 9220 5600

Competent Persons Statement

The information in the tables in this report that relate to exploration, mineral resources or ore reserves is based on information compiled by Mr Paul Benson (B.Sc.) who is a full time employee of Aragon Resources Ltd and a member of the AusIMM. Mr. Benson has sufficient experience which is relevant to the style of mineralisation and type of deposits under consideration and to the activity which he is undertaking to qualify as a competent person as described by the 2004 Edition of the "Australasian Code for Reporting of Exploration Results, Mineral Resources and Ore Reserves". Mr. Benson consents to the inclusion in this report of the matters based on his information in the form and context in which it appears.