



ASX ANNOUNCEMENT

10 September 2010

---

## ARUMA SECURES NORTHERN EXTENSION OF THE GLANDORE PROJECT

---

### Highlights:

- **Glandore**
    - **6km<sup>2</sup> of new leases acquired at the north end of Glandore**
    - **Four new tenements complete tenure of Glandore Anticline**
    - **Drilling to commence at Glandore in mid-September**
  - **Kurnalpi South**
    - **30km<sup>2</sup> lease applied for to the north of Steeple Hill**
  - **All Leases**
    - **Hyvista Survey scheduled to commence next week**
- 

The Directors of **Aruma Resources Limited (ASX: AAJ – “Aruma” or “the Company”)** are pleased to announce that the Company has successfully secured the prospective northern extension at its flagship Glandore Project, located 40km east of Kalgoorlie. The leases were acquired from a privately owned exploration company in Kalgoorlie.

The four leases cover 6km<sup>2</sup> and consist of four prospecting licences (one granted and three applications). The leases contain the northern extension of the Axial Planar Anomaly.

The securing of these leases will now allow Aruma to explore the complete geological structure known as the Glandore anticline. These leases have known anomalies over a strike length of some 6kms.

The leases add to the regional nature of the Glandore Project as shown in Figure 1 and show the proximity of the tenements along the Salt Creek-Majestic trend of Integra Mining Ltd to the south.

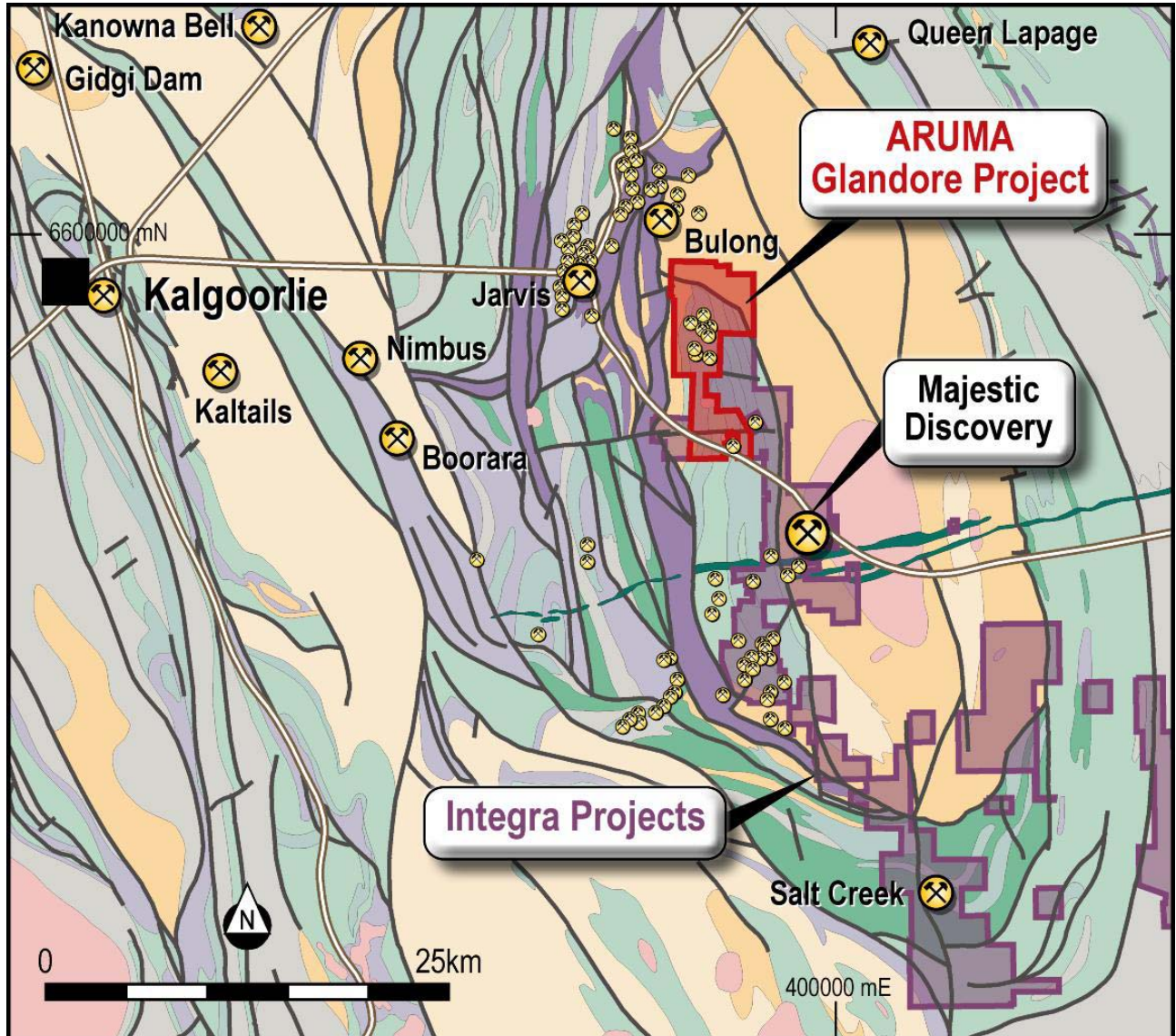


Figure 1 Regional geology plan showing the Glandore Project

The leases are shown in the Figure 2 below. The shallow cover on the new leases will also be probed by both MMI geochemical sampling and the Hyvista scanning.



ARUMA SECURES NORTHERN EXTENSION OF THE GLANDORE PROJECT

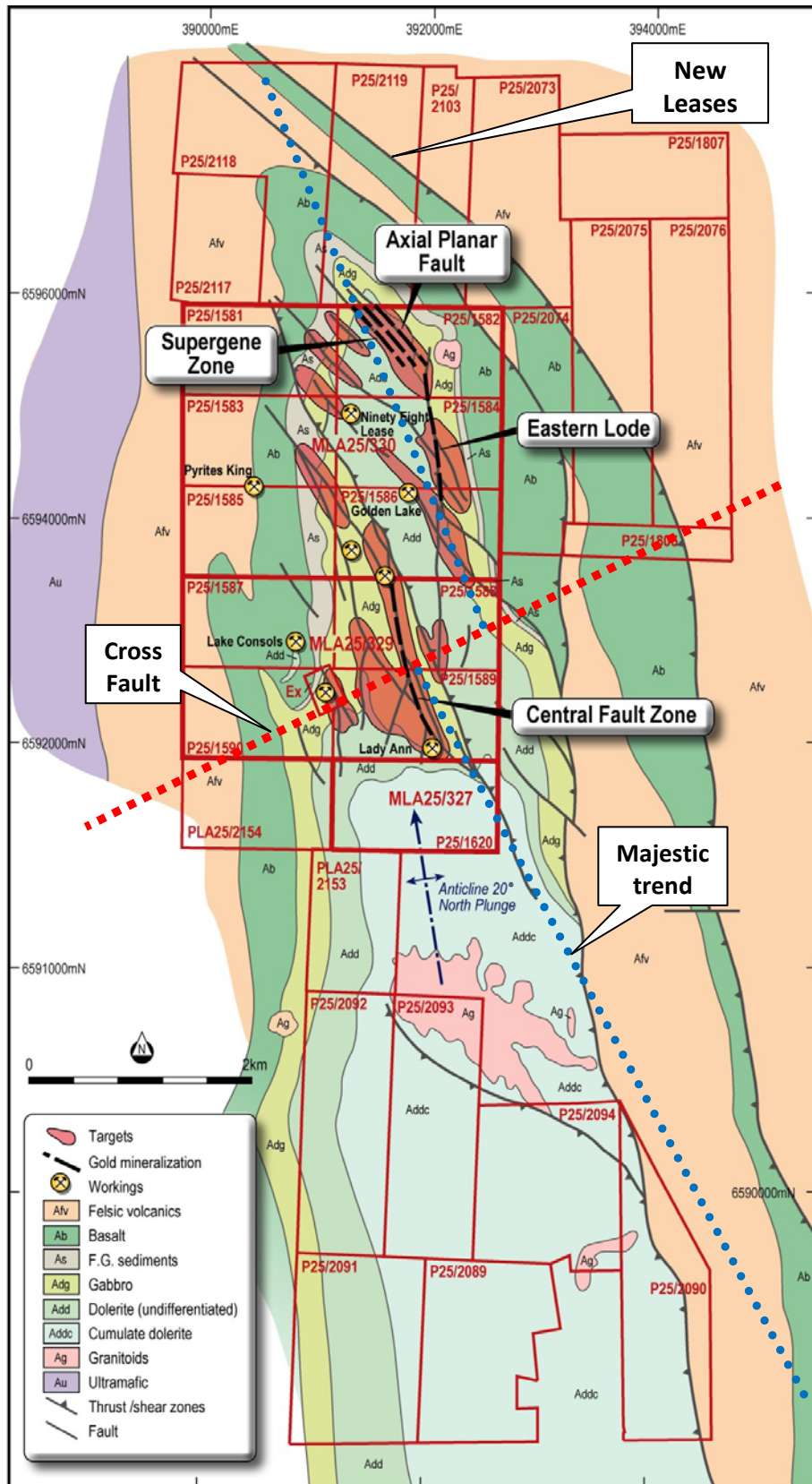


Figure 2 Glandore geology plan showing the new leases.

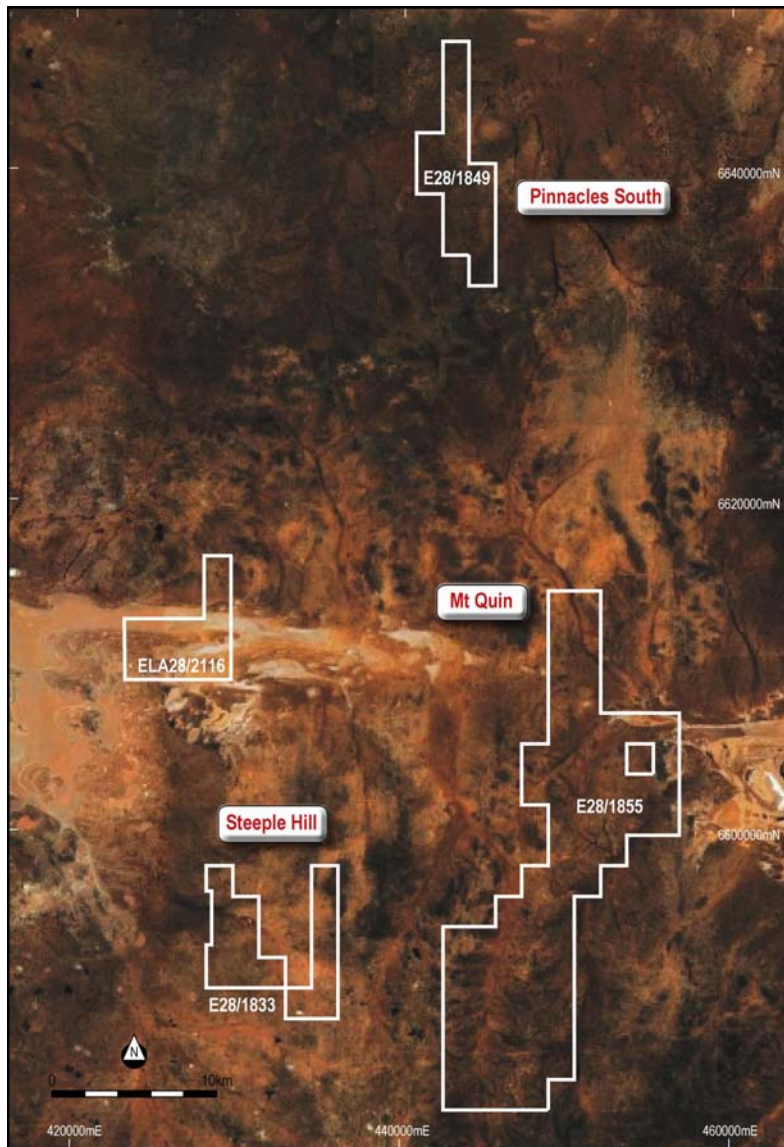
**Aruma Resources Limited**

ABN 77 141 335 364 ASX: AAJ  
24 Colin Street, West Perth WA 6005, Australia | PO Box 2803, West Perth WA 6872, Australia  
T +61 8 9481 2425 | F +61 8 9481 1756 | W [www.arumaresources.com](http://www.arumaresources.com)



ARUMA SECURES NORTHERN EXTENSION OF THE GLANDORE PROJECT

The Company has also applied for a 30km<sup>2</sup> Exploration Licence (ELA25/2116) south of Kurnalpi and along strike from the Steeple Hill Lease (EL25/1833).



© 2010 Google  
Image © 2010 DigitalGlobe  
© 2010 Cnes/Spot Image  
©2010 MapData Sciences Pty  
Ltd, PSMA

**Figure 3** New ELA 28/2116 in the Kurnalpi South Area

The Hyvista Survey over the Company's 400km<sup>2</sup> of leases is scheduled to commence next week. The results of this survey will be processed in Melbourne in late October 2010.

For further information please contact:

**Peter Schwann**

Managing Director

**Aruma Resources Limited**

Telephone: +61 8 9481 2425

[info@arumaresources.com](mailto:info@arumaresources.com)

**Aruma Resources Limited**

ABN 77 141 335 364 ASX: AAJ

24 Colin Street, West Perth WA 6005, Australia | PO Box 2803, West Perth WA 6872, Australia

T +61 8 9481 2425 | F +61 8 9481 1756 | W [www.arumaresources.com](http://www.arumaresources.com)



## ARUMA SECURES NORTHERN EXTENSION OF THE GLANDORE PROJECT

---

*The information in this release that relates to Exploration Results, Mineral Resources or Ore Reserves is based on information compiled by Peter Schwann who is a Fellow of the Australasian Institute of Mining and Metallurgy and Chartered Professional (Geology). Mr Schwann is an employee of the Company. Mr Schwann has sufficient relevant experience to qualify as a Competent Person as defined in the JORC Code (2004) and consents to the inclusion of this information in the form and context in which it appears.*

### **About Aruma**

Aruma is a focussed West Australian based gold exploration company which has four prospective project areas within the Eastern Goldfields region of Western Australia. Inclusive of several tenements which are still under application, Aruma's tenement package now totals approximately 412km<sup>2</sup>.

The flagship Glandore Project is approximately 40km east of Kalgoorlie-Boulder. Previous exploration of the Glandore Project, has identified several advanced exploration areas and some twenty under-explored prospective exploration targets.

The Kurnalpi South Project lies approximately 100km to the east of Kalgoorlie-Boulder and comprises three gold exploration prospects designated as Pinnacles South, Mt Quin and Steeple Hill, within a minimally explored area of a greenstone belt that hosts several major mines.

The Laverton East Project is located approximately 20km east of Laverton. Previous exploration of the area includes relatively shallow RAB drilling over much of the tenement and reconnaissance rock chip sampling returned several gold assays of greater than 0.2 g/t.

The Jundee South Project is approximately 50km to the east of Wiluna within the Yandal Greenstone belt. The Gourdis alluvial deposits are thought to have been derived from the west, near or on the Aruma Lease.

Each of the project areas can be readily accessed from the regional towns of Kalgoorlie-Boulder, Laverton or Wiluna.

---

### **Aruma Resources Limited**

ABN 77 141 335 364 ASX: AAJ  
24 Colin Street, West Perth WA 6005, Australia | PO Box 2803, West Perth WA 6872, Australia  
T +61 8 9481 2425 | F +61 8 9481 1756 | W [www.arumaresources.com](http://www.arumaresources.com)