



ASX ANNOUNCEMENT / MEDIA RELEASE

ASX:ABU

May 13th, 2010

Samples return assays up to 20.3% Copper and 271g/t Silver

ABM Resources NL ("ABM" or "The Company") is pleased to announce that recent reconnaissance work on the Reward Prospect located proximal to the Stafford Gold Zone, approximately 193 kilometres northeast of Alice Springs, has returned high grade base and precious metal samples.

Highlights

- Reward Prospect with rock samples grading:
 - 0.55g/t gold, 271g/t silver and 17.8% copper
 - 0.33g/t gold, 191g/t silver, and 20.30% copper
- Pine Hill Prospect with one rock sample grading 1.79g/t gold

Reward Prospect

The Reward Prospect is located in the Company's Stafford Gold Zone project area approximately 9 kilometres southeast of the Sabre Prospect. The Reward Prospect is identified by several historic mine workings over a strike length of 120 metres. It is understood that historically high grade copper was extracted from the area for direct shipping for blending with fertilizers; however historically gold and silver was not recovered. Copper and associated gold, silver, lead and zinc mineralisation is hosted in a brecciated shear-zone several metres wide within sediments. Both copper oxide (malachite and azurite) and copper sulphide (chalcocite) minerals can be seen in the samples collected. Other anomalous elements in the samples such as bismuth and lead along with nearby granites indicate a possible intrusive source for the mineralisation.

Pine Hill Prospect

The Pine Hill prospect is located 3.5 kilometres northwest of Reward. The prospect includes a historic mine shaft to approximately 10 metres depth.

Update on Drilling on the 20km long Stafford Gold Zone

ABM's drill program on the Stafford Gold Zone is continuing. The Stafford Gold Zone is a 20 kilometre long gold anomaly where previous explorers have identified considerable near-surface gold mineralisation with the Sabre and Falchion prospects being classed by the Company as early stage discoveries / advanced targets. The Company is drilling several holes to target continuations of mineralisation at depth beneath already drilled oxide / regolith gold zones. Currently four holes have been completed with a 298 metre Reverse Circulation (RC) hole at the Assegai prospect; 2 RC / diamond holes on the Sabre Prospect to 207 and 298 metres depth respectively and 1 RC / diamond hole at the Falchion Prospect to 275 metres. Assays are pending on all holes and the campaign is continuing with a further four RC / diamond holes planned on the Stafford Gold Zone prospects.

ABM RESOURCES NL

Level 1, 141 Broadway Nedlands Western Australia 6009 . www.abmresources.com.au
Email: admin@abmresources.com.au . Tel: +61 8 9423 9777 . Fax: +61 8 9423 9733
ABN: 58 009 127 020

Table 1. Sample details from reconnaissance at Reward and Pine Hill Prospects.

SAMPLE	Prospect	Sample Type	MGA94 East	MGA94 West	Gold (g/t)	Silver (g/t)	Copper (%)	Lead (%)	Zinc (%)
RW200005	Reward	Rock	275253	7545114	0.55	271.0	17.80	0.13	0.32
RW200006	Reward	Rock	275268	7545129	0.33	191.0	20.30	0.03	0.03
RW200007	Reward	Rock	275238	7545099	0.20	14.9	0.15	0.23	-
RW200008	Reward	Rock	275251	7545114	0.47	36.6	6.68	0.80	0.13
PH200004	Pine Hill	Rock	272542	7544462	1.79	0.3	0.37	0.07	-

All samples collected from loose rock / rock float material at surface and associated with historic workings. Samples assayed by ALS Chemex Ltd and crushed and prepared at the ALS Chemex laboratory in Alice Springs and then sent to Perth, Western Australia for analysis. Gold is assayed using fire assay and ICP-AES. Silver and base metals assayed using a 4-acid ICP-MS / ICP-AES method.

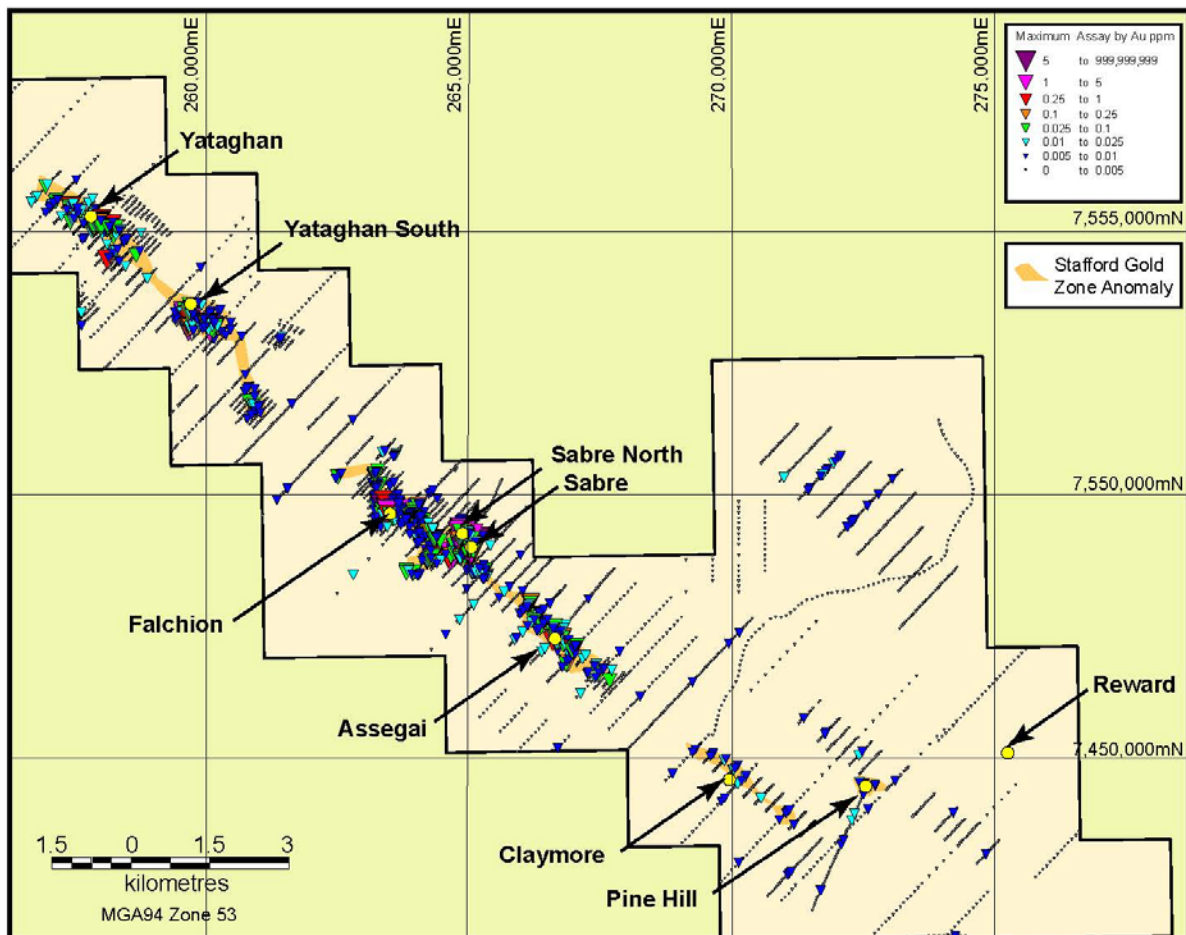


Figure 1. Stafford Gold Zone prospect location map showing historic hole locations from shallow geochemistry drilling.

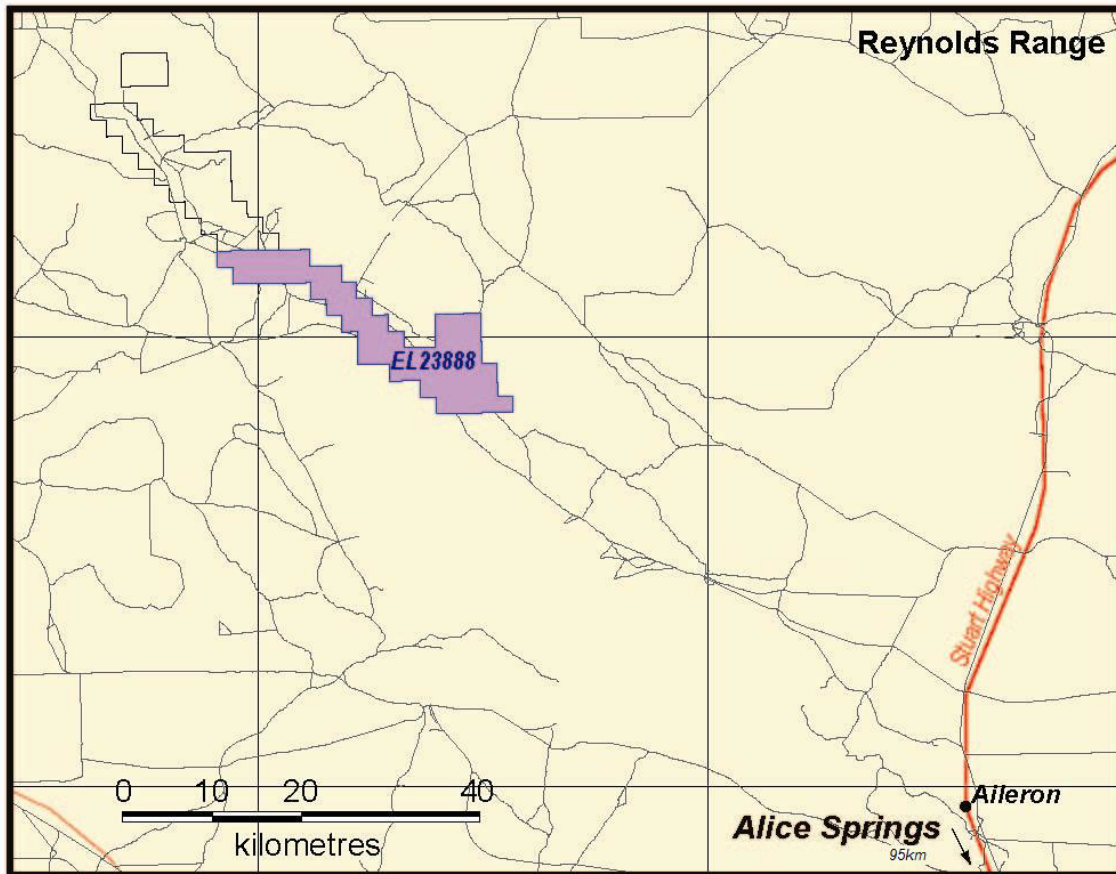


Figure 2. Location map of EL2388 containing the Stafford Gold Zone. The project is located approximately 193 kilometres north-east of Alice Springs and is readily accessible from tracks from the Stuart Highway.

About ABM Resources NL

ABM Resources is a mineral exploration company focused on gold discovery in the Tanami-Arunta regions of the Northern Territory and Australia. The Company has an aggressive exploration approach and aims to bring multiple discoveries to resource stage as soon as possible.

Signed

Darren Holden – Managing Director

Competent Persons Statement

Information in this document has been reviewed and validated by Mr Darren Holden who is a Member of The Australasian Institute of Mining and Metallurgy. Mr Holden is a full time employee of ABM Resources NL and has sufficient experience which is relevant to the style of mineralisation and type of deposit under consideration and to the activity which they are undertaking to qualify as a Competent Person as defined in the 2004 Edition of the “Australasian Code for Reporting Exploration Results, Mineral Resources and Ore Reserves”. Mr Holden consents to the inclusion in the documents of the matters based on this information in the form and context in which it appears.

For Further Information Please Contact

Jutta Zimmermann
 CFO / Company Secretary
 +61 8 9423 9777

Darren Holden
 Managing Director
 +61 8 9423 9777