

ASX/MEDIA ANNOUNCEMENT

09 November 2010

The Manager
Companies Announcements Office
Australian Securities Exchange



ENCOUNTER-1 WEEKLY DRILLING REPORT

ITEM	DETAIL
Well name	▪ Encounter-1
Permit	▪ PEL 218 (Permian JV)
Participants	▪ Beach Energy Ltd – 90% (Operator) ▪ Adelaide Energy Ltd – 10%
Primary targets	▪ Roseneath/Epsilon/Murteree shale/sand/shale sequence
Spud Date	▪ 3 October 2010
Target depth (prognosed)	▪ 3625m
Total depth @ end of current week	▪ 2862m
Total depth @ end of previous week	▪ 2596m
Metres drilled during week	▪ 266m
Activities during week	▪ Run and cement 9 5/8" casing (some lost time): nipple4 up and test BOP's : drill out and drill ahead in 8½" hole
Current activities	▪ Drill ahead in 8½" hole
Planned Activities	▪ Drill ahead to REM unit expected at +/-3200m – commence coring

For further information contact:

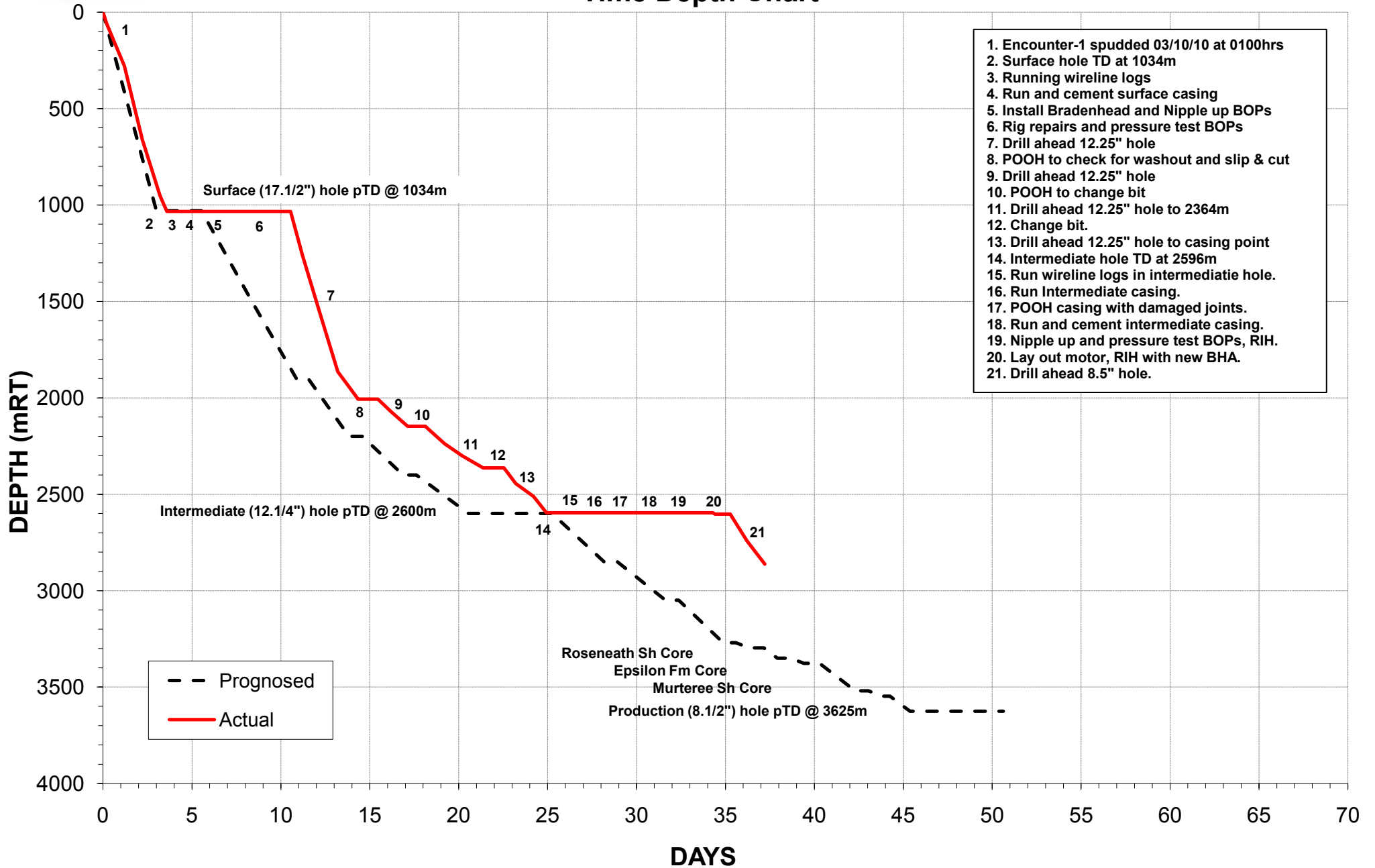
Carl Dorsch
Managing Director
Adelaide Energy Limited
Mob: 0400 508 088
c.dorsch@adelaideenergy.com.au

Neil Young
Chief Commercial Officer
Adelaide Energy Limited
Mob : 0417 850 245
neil.young@adelaideenergy.com.au

ASX Code : ADE



Encounter-1 Time Depth Chart



1. Encounter-1 spudded 03/10/10 at 0100hrs
2. Surface hole TD at 1034m
3. Running wireline logs
4. Run and cement surface casing
5. Install Bradenhead and Nipple up BOPs
6. Rig repairs and pressure test BOPs
7. Drill ahead 12.25" hole
8. POOH to check for washout and slip & cut
9. Drill ahead 12.25" hole
10. POOH to change bit
11. Drill ahead 12.25" hole to 2364m
12. Change bit.
13. Drill ahead 12.25" hole to casing point
14. Intermediate hole TD at 2596m
15. Run wireline logs in intermediate hole.
16. Run Intermediate casing.
17. POOH casing with damaged joints.
18. Run and cement intermediate casing.
19. Nipple up and pressure test BOPs, RIH.
20. Lay out motor, RIH with new BHA.
21. Drill ahead 8.5" hole.