



May 2010



ARC EXPLORATION LIMITED

Issued Capital: 399 M ARX Shares *
199 M ARXOA Options * (Jan 11 @ 3.6c)
42 M Directors & Management Options (Jan 11 @ 3.6c)

Directors: Bruce Watson – Non Exec Chairman
John Carlile – Managing Director
George Tahija – Non Exec Director
Robert Willcocks – Non Exec Director

Major Shareholders*: Southo Investments Limited 52 M – 13%
ANZ Banking Group Limited 48 M – 12%
RAB Special Situations Fund 29 M – 7%
Directors & Management 35M – 9%

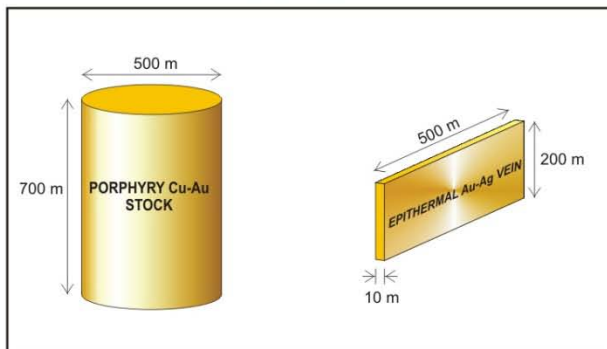
* Note: Assuming allotment of 52 M shares and 26 M options to drilling contractor



ARC EXPLORATION LIMITED

STRATEGY

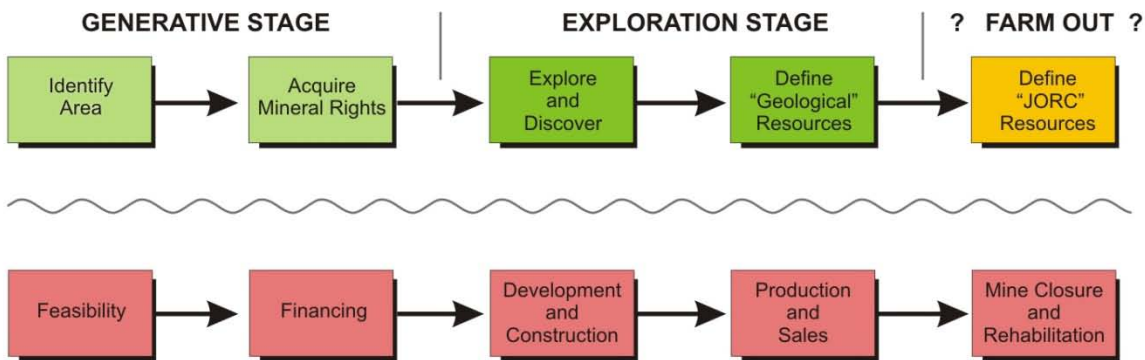
GOLD



INDONESIA



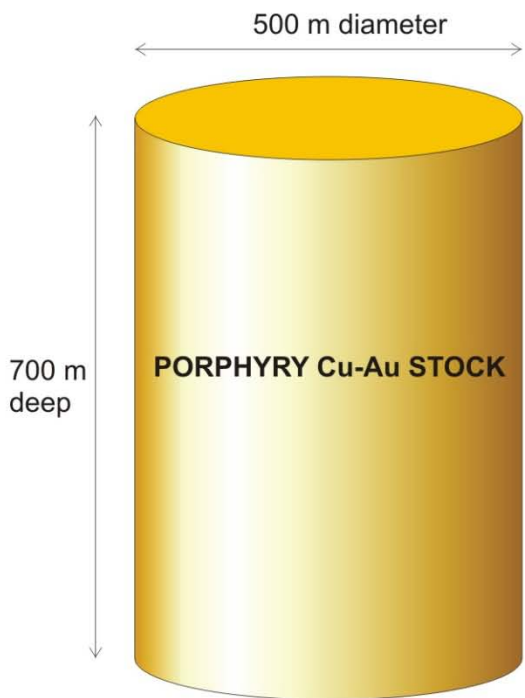
EXPLORATION





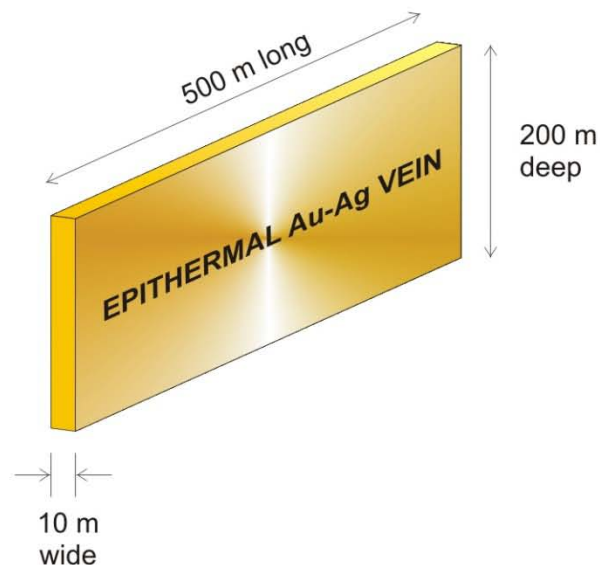
ARC EXPLORATION LIMITED

GOLD



± 400 Mt ore
Grade ≥ 0.7% Cu, ≥ 0.7 g/t Au
Metal ≥ 28 Mt Cu, ≥ 280 t Au (±10M oz Au)
Life > 20 years

**GRASBERG
BATU HIJAU**



± 3 Mt ore
Grade ≥ 15 g/t Au, ≥ 150 g/t Ag
Metal ≥ 45 t Au, (±1.5M oz Au) > 450 t Ag
Life 5 - 10 years

**GOSOWONG/ KENCANA
GUNUNG PONGKOR**



ARC EXPLORATION LIMITED





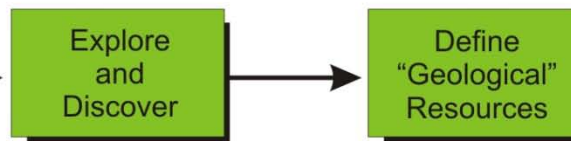
EXPLORATION

ARC EXPLORATION

GENERATIVE STAGE



EXPLORATION STAGE



? FARM OUT ?

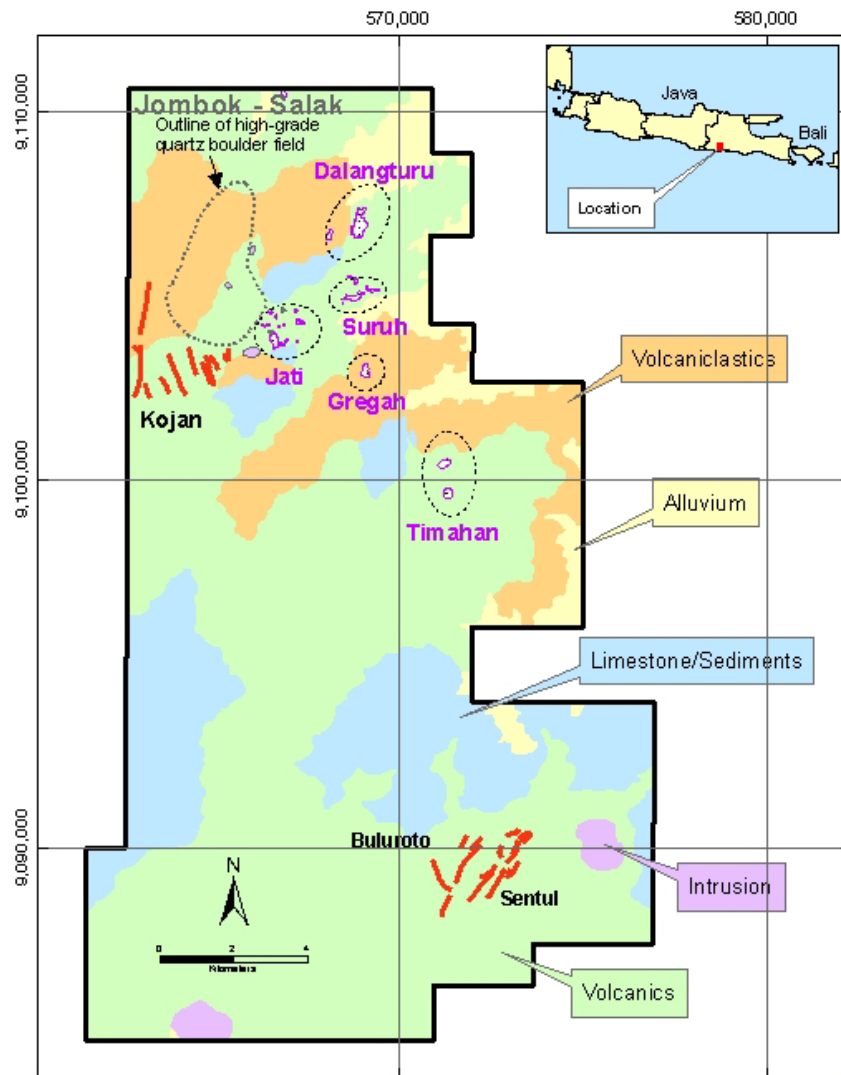


MINING COMPANY





TRENGGALEK PROJECT - ARX 95%



TGL-05-3001F regional geology A4 nov09.mxd

TRENGGALEK

Excellent gold potential.
WHY ? Large area (~300Km²).
Multiple targets.
Drill ready.

Targets

- * Three large known vein systems
- * High grade vein boulder field.
(new vein systems?)

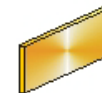
Jombok ; 6 samples @ 14-46 g/t Au
Salak ; 5 samples @ 5-15 g/t Au
Jati ; 8 samples @ 10-46 g/t Au

- * High level breccia/ silica sinter caps.
(Blind vein systems?)

Positive investment climate

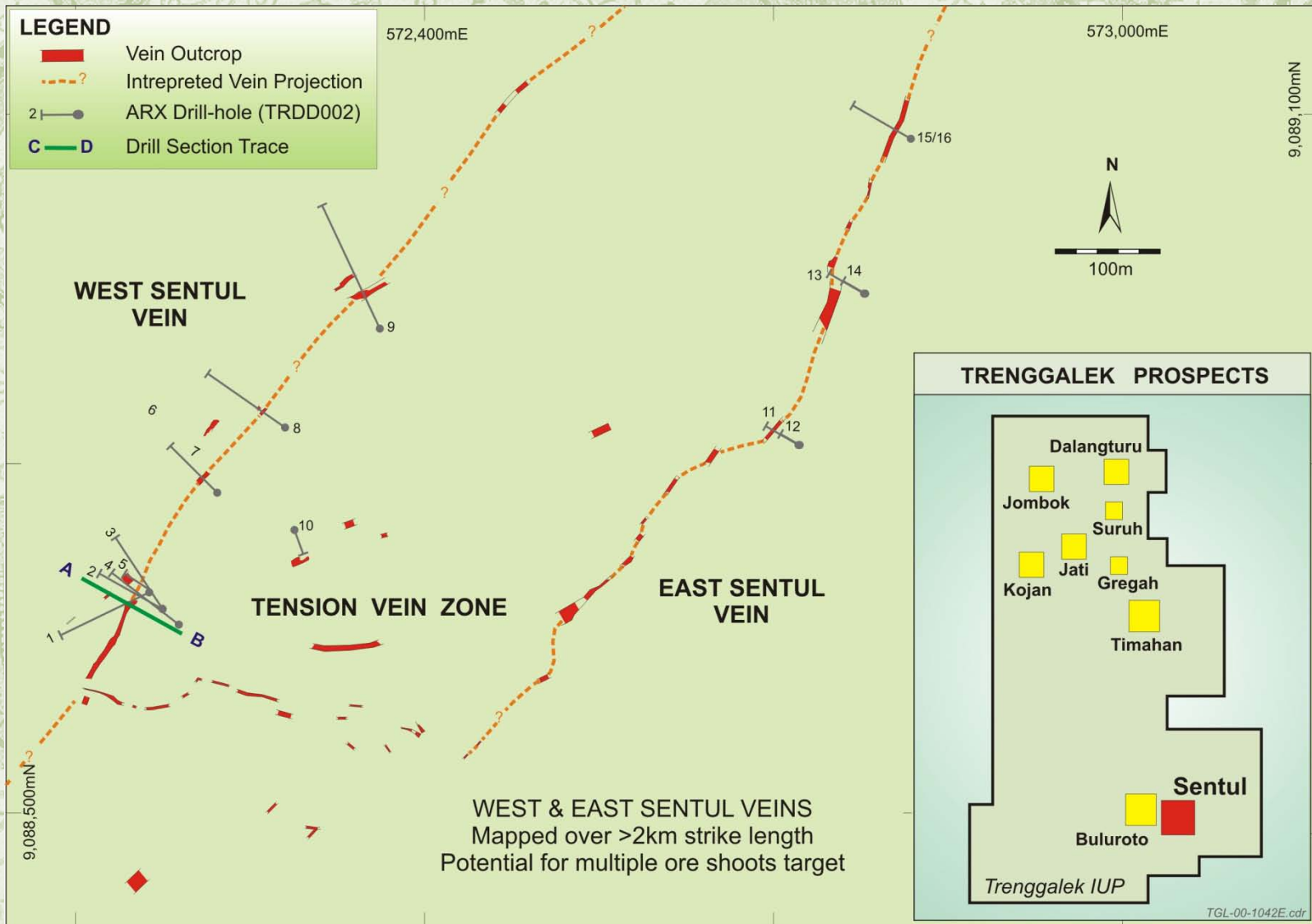
- Supported by local government.
- Good community relations.
- Good forestry relations.

Targets





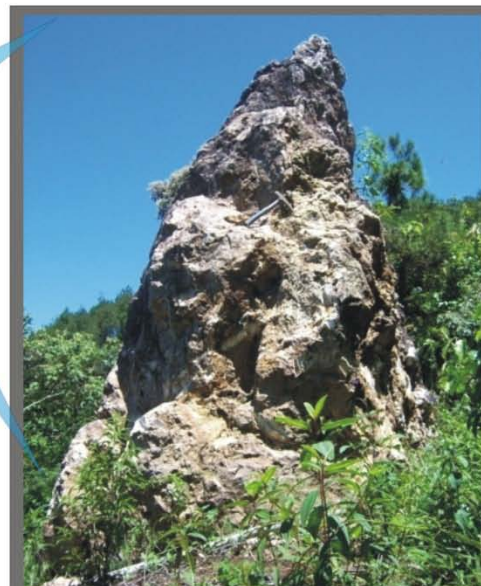
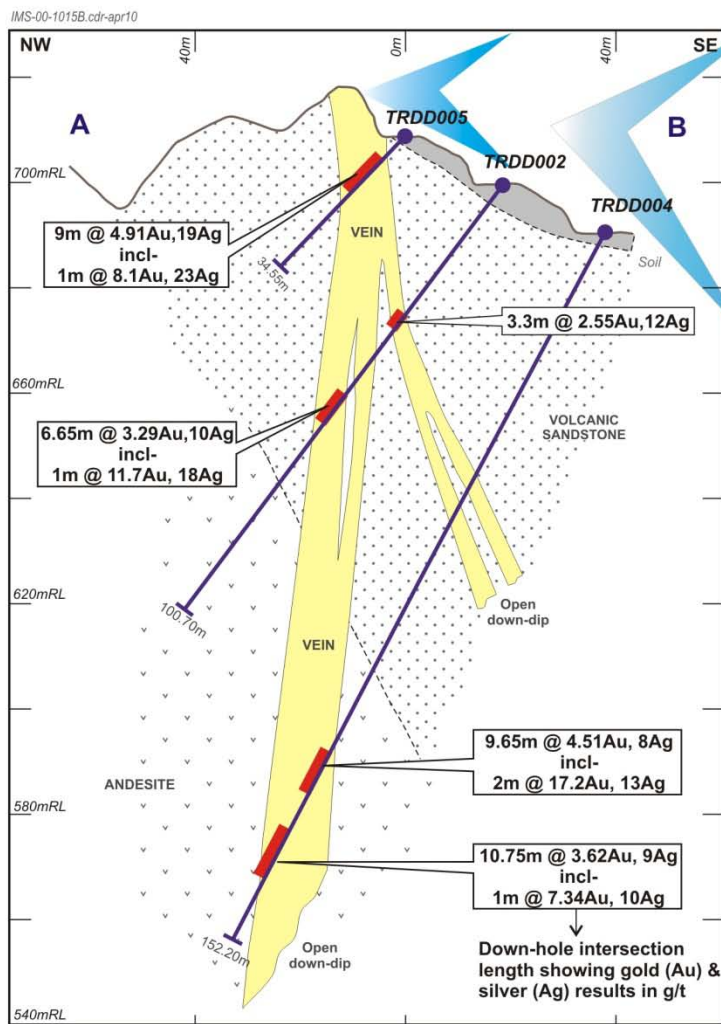
TRENGGALEK PROJECT – ARX 95%



SENTUL PROSPECT
Drill-hole Locations and Vein Outcrops



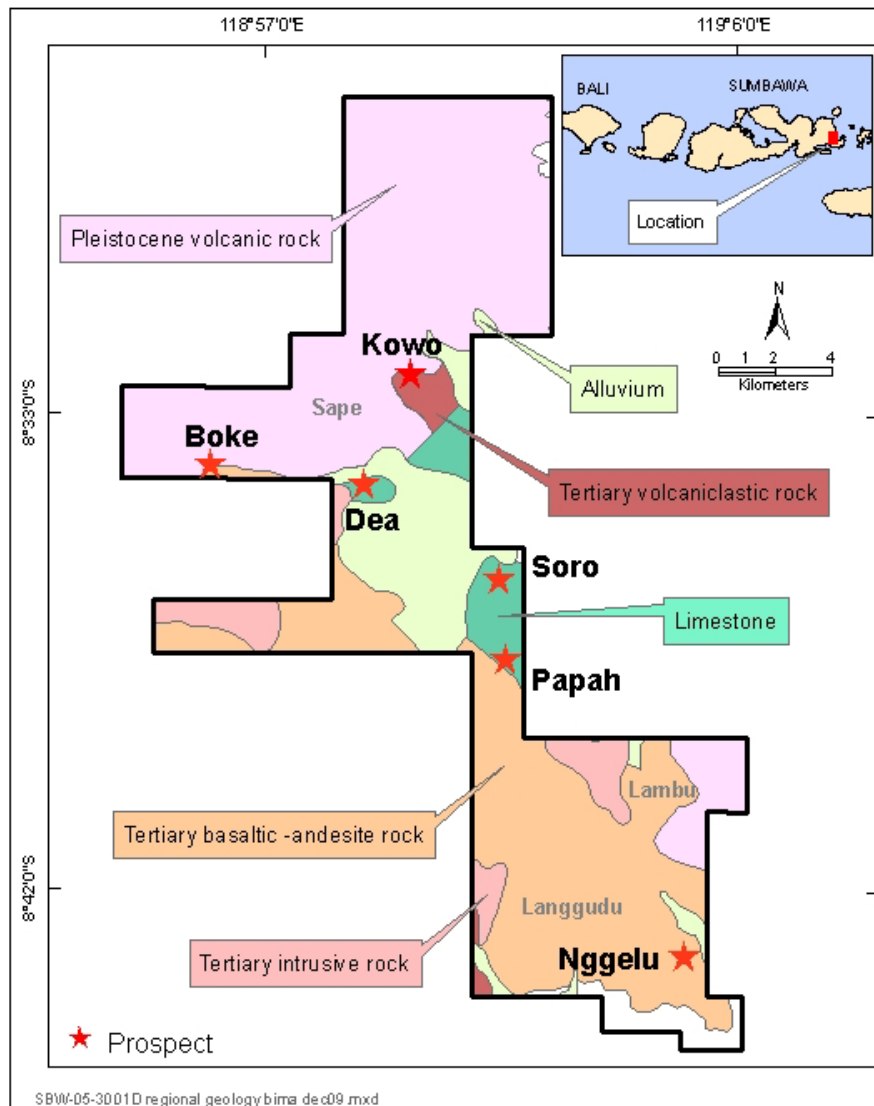
TRENGGALEK PROJECT – ARX 95%



WEST SENTUL VEIN, Drill Section A - B



BIMA PROJECT - ARX 95%

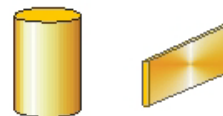


BIMA



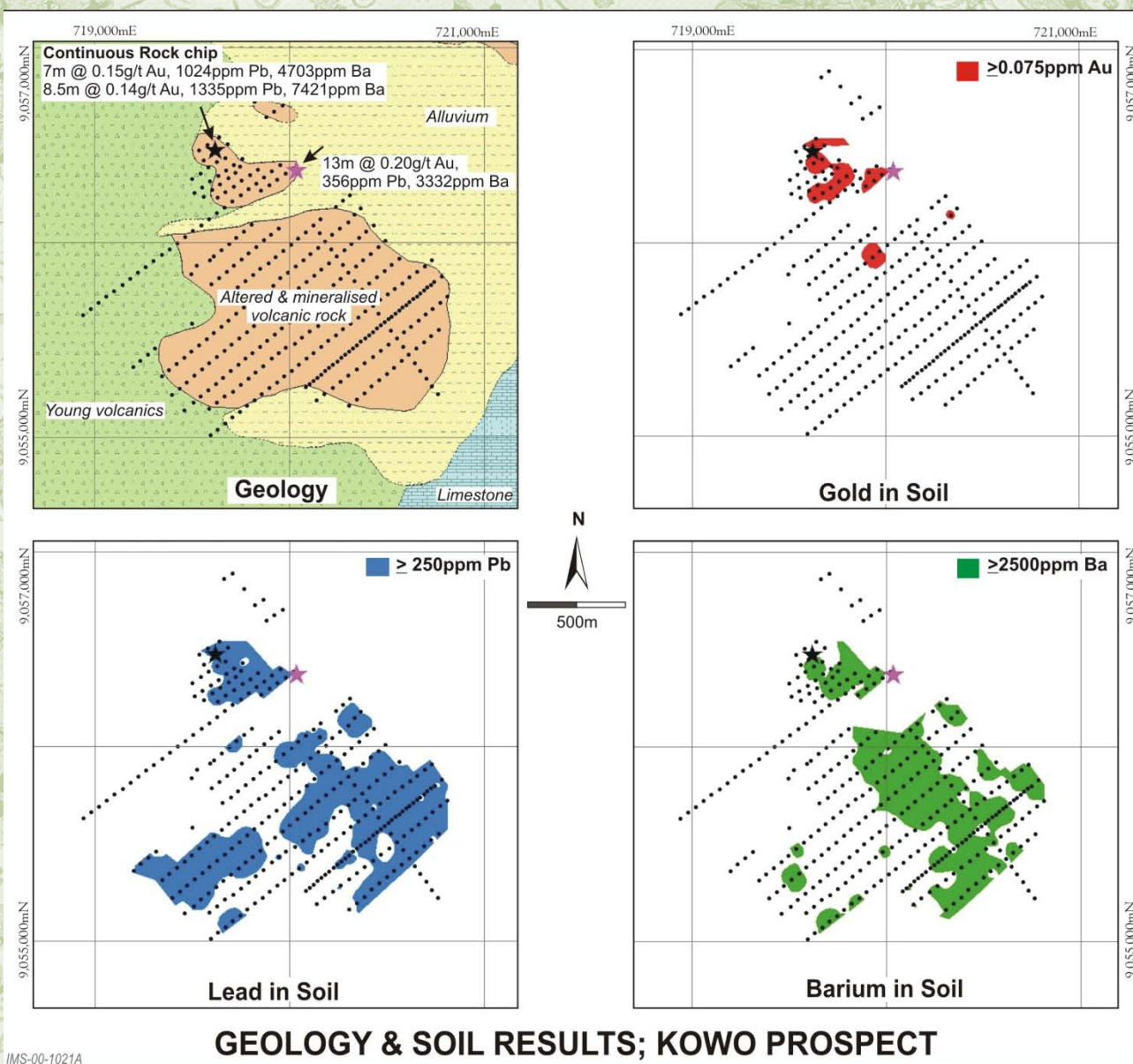
Large area (~250Km²)
 Porphyry Cu-Au signatures
 Kowo Prospect; 2km x 1.5 Km; alteration / stockwork
 Rock chip; 0.5g/t Au, 96 g/t Ag, 1.5% Pb, 6%Zn

Targets





BIMA PROJECT – ARX 95%

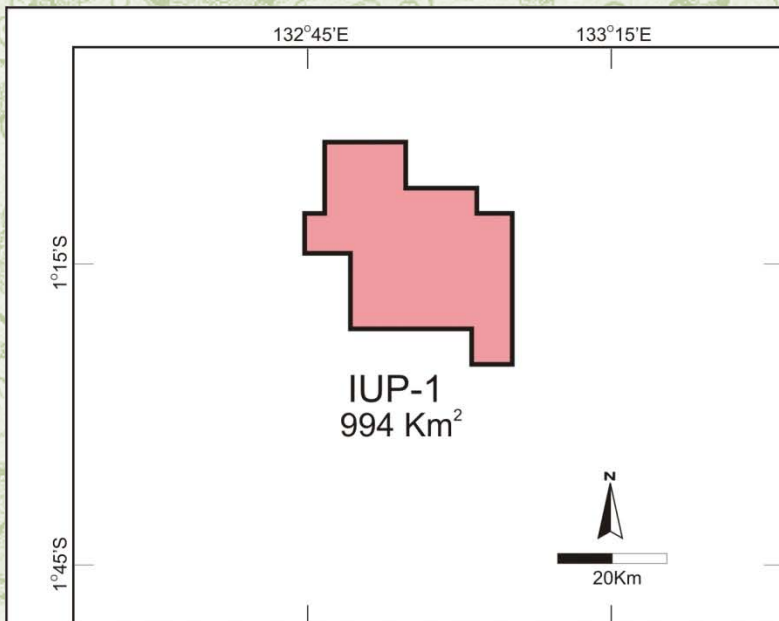


GEOLOGY & SOIL RESULTS; KOWO PROSPECT



ANGLO-AMERICAN ALLIANCE - ARX 20%

PAPUA



ARX - ANGLO ALLIANCE

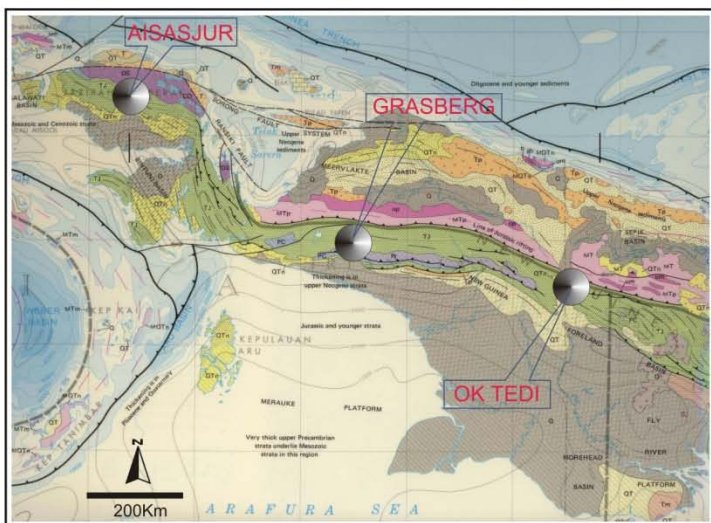
Highly prospective belt.(Grasberg, OK Tedi)

Large area; IUP's + applications 1929 Km².

Drill results 26m@0.21% Cu, 0.25g/t Au (from 539m)

8m@0.26% Cu, 1.30g/t Au (from 712m).

Identified targets



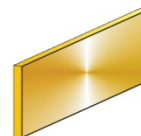
APN-00-1010C .cdr - may.10



2010

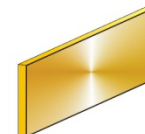
★ **TRENGGALEK**

Complete 5000m of drilling



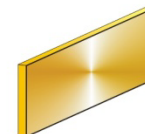
★ **BIMA**

Define drill targets



★ **GENERATIVE**

Secure additional tenements





www.arcexploration.com.au