

ASX RELEASE



Date 20 July 2010

Release 1011-01

NEW URANIUM-BEARING AND POLYMETALLIC MINERALISED ZONE DISCOVERED AT NORTH MAUREEN PROJECT, QLD

- **Anomalous rock chip samples up to 760ppm U₃O₈, 1.1% Cu, 0.68 g/t Au, 206 g/t Ag**
- **A 500m ferruginous quartz breccia zone, displaying anomalous uranium and copper mineralisation**
- **Breccia is within the Proterozoic basement, close to the Carboniferous unconformity, displays elevated uranium, silver, gold and copper**
- **Soil sampling confirms the mineralised zone and indicates potential down dip extension of the breccia zone**
- **Anomalous rock chip samples, collected in the area along structural extensions of the zone, indicate the potential of further mineralisation under cover**
- **Follow-up mapping and sampling will begin in late July**

Bondi Mining Ltd is pleased to announce encouraging rock chip and soil results from regional field reconnaissance within the North Maureen Project area.

A helicopter-supported field reconnaissance program following up geophysical and radiometric targets has located a partially exposed ferruginous quartz breccia zone at Native Creek; approximately 25km north of the Maureen uranium deposit. The Native Creek Breccia occurs within Proterozoic altered metasediments and the unconformity between the Proterozoic basement and overlying Carboniferous rhyolitic volcanics outcrops to the east and west along strike. Rock chip sampling of the outcropping breccia and exposed unconformity have confirmed anomalous uranium, copper, arsenic, molybdenum along a 500m long north north-west trending zone (Figure 2). The rock chip sampling returned 5 samples over 250ppm U₃O₈, with a maximum of 760ppm U₃O₈. One 20m composite rock chip sample taken along the breccia returned 440 ppm U₃O₈.

The breccia is also anomalous in copper up to 1.1%, bismuth up to 2.4%, lead up to 1.5% and arsenic, with 9 samples over 1%. Gold, silver and molybdenum values were elevated with maximums of 0.685 grams per tonnes, 206 grams per tonne and 17.7 ppm, respectively. This geochemical signature is similar to the nearby Maureen uranium deposit. Five north-south reconnaissance soil lines taken over the exposed breccia zone confirm the extent of the mineralisation and indicate possible down dip extensions of the zone under the alluvial cover. Structures in the area display elevated uranium radiometric signatures and additional reconnaissance rock chip sampling in these area located elevated uranium, copper, arsenic, molybdenum and lead. Consequently, there is a high possibility for further unexposed mineralisation in the area along strike and undercover (Figure 3).

A follow up program of detailed mapping, soil and rock chip sampling is planned for the end of July.

The North Maureen Project in Queensland is a large package of tenements (totalling some 670 km²) containing a number of untested targets beneath cover, which display similar geological characteristics to the Maureen and Ben Lomond deposits. Mega Uranium Ltd's Maureen uranium deposit, which lies 2 km to the SE of the Bondi tenements, contains an NI43-101 compliant Indicated Resource of 3.1 million tonnes at 0.09% U₃O₈ (5.95 Mlbs U₃O₈) and an Inferred Resource of 0.15 million tonnes at 0.11% U₃O₈ (0.38 Mlbs U₃O₈).

The North Maureen project is the subject of a Letter of Agreement between Bondi and Japan Oil, Gas and Metals National Corporation (JOGMEC) wherein JOGMEC can earn a 51% undivided interest in the project by sole funding AUD \$0.9 million in exploration over two years. Bondi is the operator of the exploration program.



Dr Rick Valenta

Managing Director

About Bondi Mining Ltd

Bondi Mining Ltd ("Bondi", ASX symbol – BOM) is a Brisbane-based exploration company with a focus on high-grade cycle-proof uranium targets with world class size potential. Bondi's Australian uranium portfolio is currently focused on the Murphy project in the Northern Territory, and the company is currently undertaking generative programs aimed at augmenting its current portfolio, with a strong focus on resource-visible projects. The company also retains a significant land holding in the gold-prospective Georgetown region of Queensland.

Further information on Bondi Mining Limited can be found on our Internet site www.bondimining.com.au or by contacting Dr Rick Valenta, Managing Director on:

Tel: (07) 3369 4000

Email: info@bondimining.com.au

Disclaimer

The exploration data and results contained in this report are based on information reviewed by Dr Rick Valenta, a fellow of the Australian Institute of Mining and Metallurgy. He is Managing Director of the Company and has sufficient experience which is relevant to the styles of mineralisation and types of deposits under consideration and to the activity which he is undertaking to qualify as a Competent Person as defined in the December 2004 edition of the Australasian Code for Reporting of Exploration Results, Mineral Resources and Ore Reserves (the JORC Code). Dr Valenta has consented to the inclusion in this release of the matters based on his information in the form and context in which it appears.

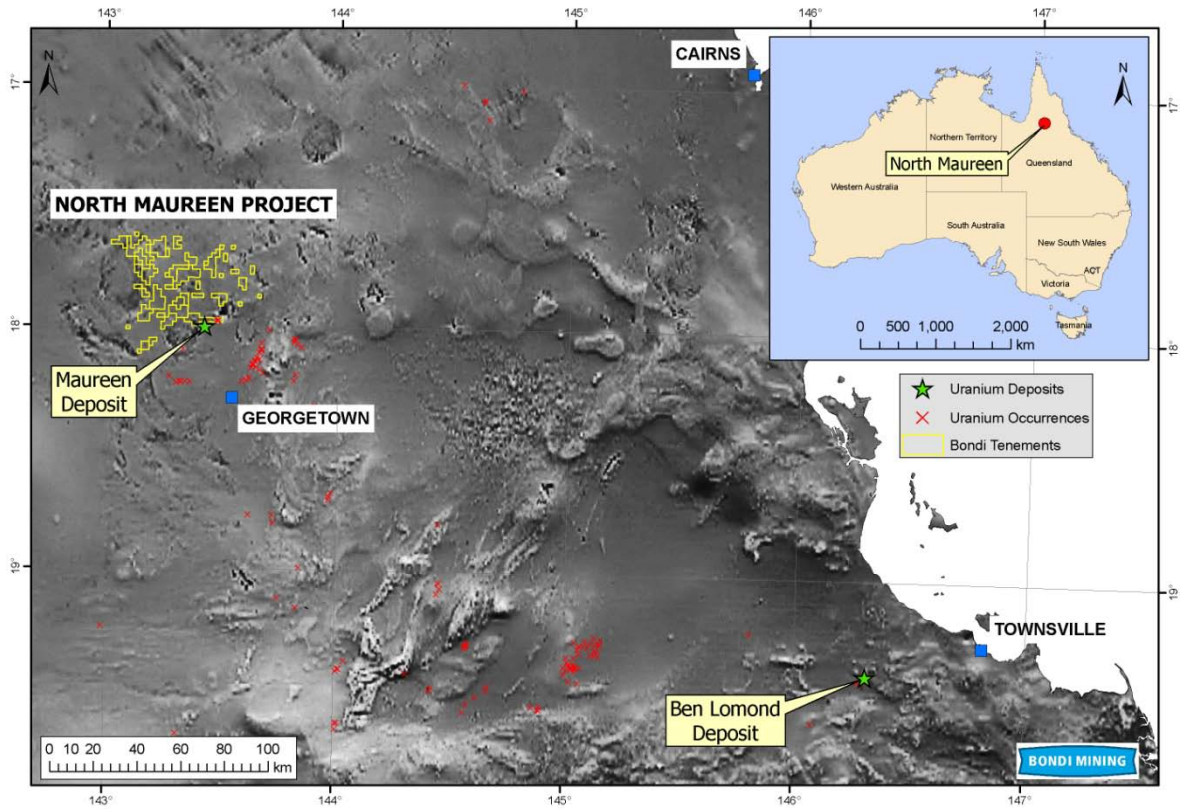


Figure 1. Regional location of the North Maureen project, superimposed on regional magnetics.

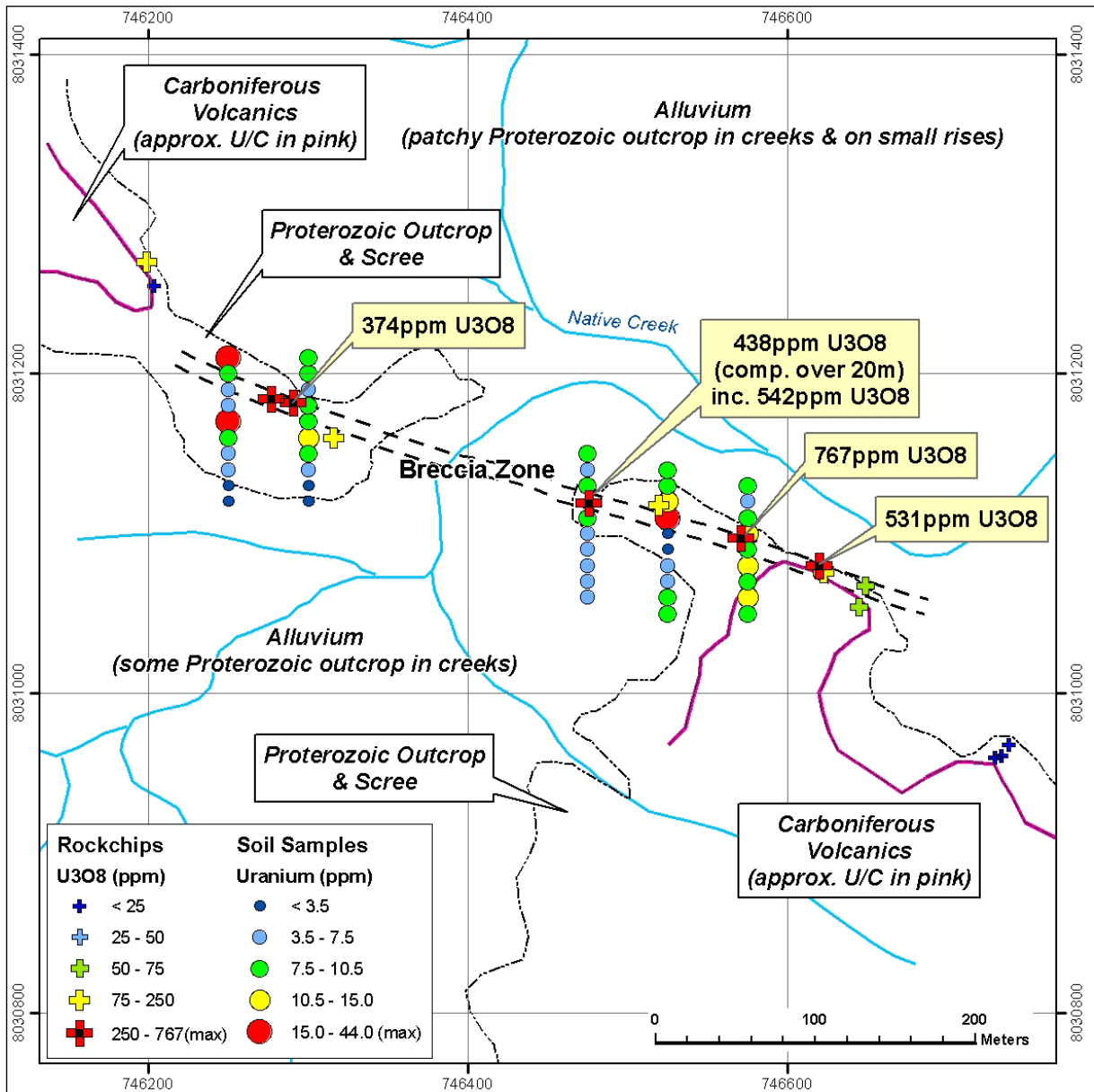


Figure 2. Rock chip and soil uranium geochemistry over the Native Creek breccia.

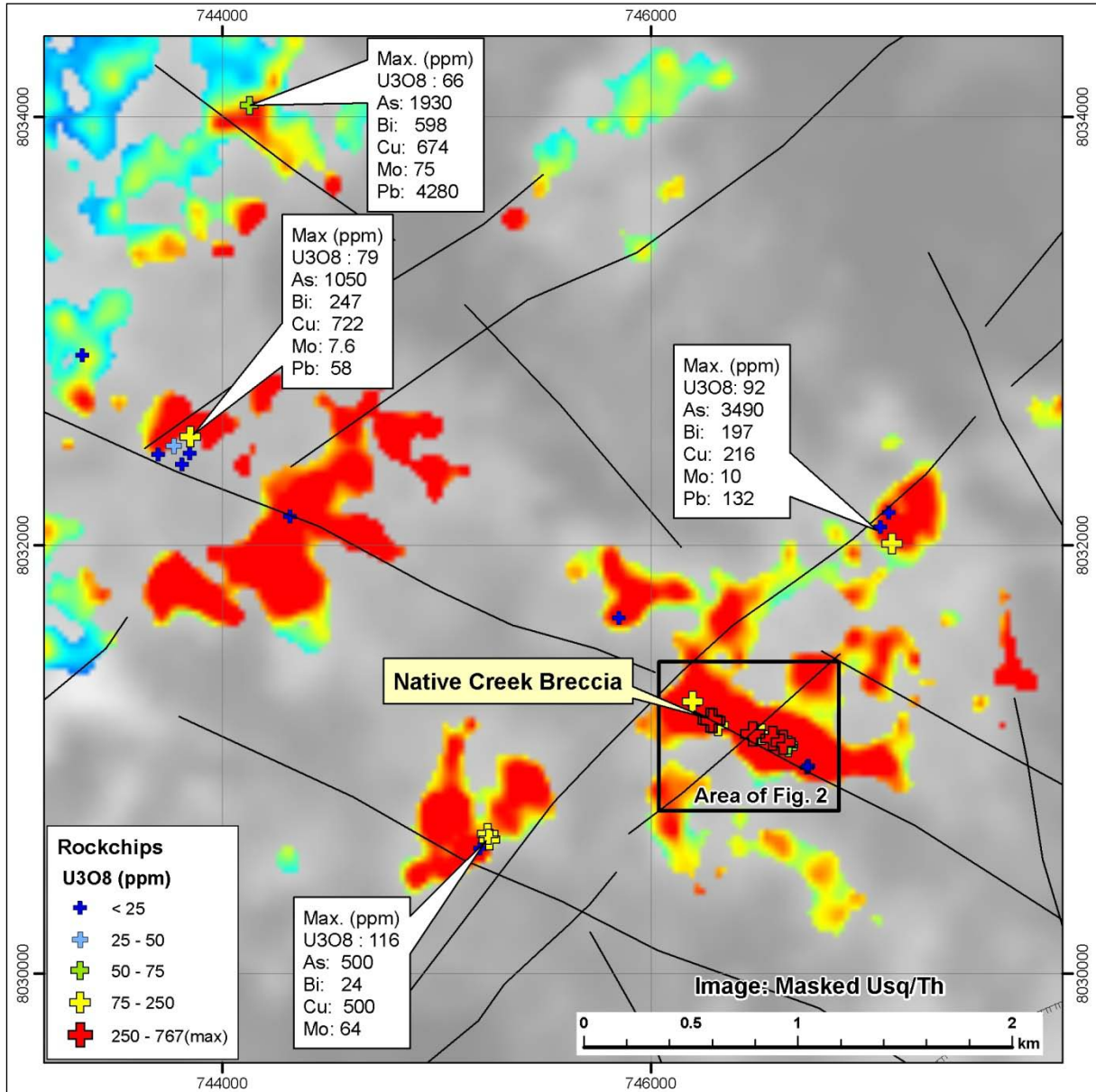


Figure 3. Regional rock chip geochemistry on a radiometric image.