

5 May, 2010

Company Announcements Officer  
ASX Limited  
Level 8 Exchange Plaza  
2 The Esplanade  
Perth WA 6000

Attention: Mr. Matthew Foy

### COMPANY ANNOUNCEMENT – EXPLORATION PERMIT ACQUISITION



China West International  
Holdings Limited  
A.C.N. 009 230 111

Suite 1503, Level 15  
97-99 Bathurst Street  
Sydney NSW 2000

website  
[www.cwh.com.au](http://www.cwh.com.au)  
tel  
+61 2 9268 0555  
fax  
+61 2 9268 0155

Australian resources exploration company China West International Holdings Limited (ASX: CWH) is pleased to announce the acquisition of the Featherbed Uranium project (EPM 15900) in northern Queensland.

The Featherbed project has been acquired from private resources exploration company Mining Exploration Australia Pty Ltd.

The project is located in the northern Queensland Coastal Ranges Igneous Province, approximately 100kms west of Cairns near the towns of Nychum and Gillagoe in a region that hosts numerous uranium deposits, including the significant Maureen and Ben Lomond deposits (See Figure 1, Project Location Map).

Known uranium deposits occur immediately south of the Featherbed project, and Afmeco Mining and Exploration Pty Ltd, which is an Australian subsidiary of major French Uranium company AREVA Ltd, conducted uranium exploration activities on the western half of EPM15900 in the early 1980s.

This exploration was by way of airborne survey using visual navigation, with wide line spacings and a very small spectrometer crystal. More recent exploration was conducted by Mining Exploration Australia Pty Ltd in 2008 and 2009 utilising the results of an airborne magnetic and radiometric survey conducted in 1999.

EPM 15900 contains similar rock sequences to those that host uranium deposits elsewhere in the region (see Figure 2) and as such the project area is considered to be highly prospective for uranium.



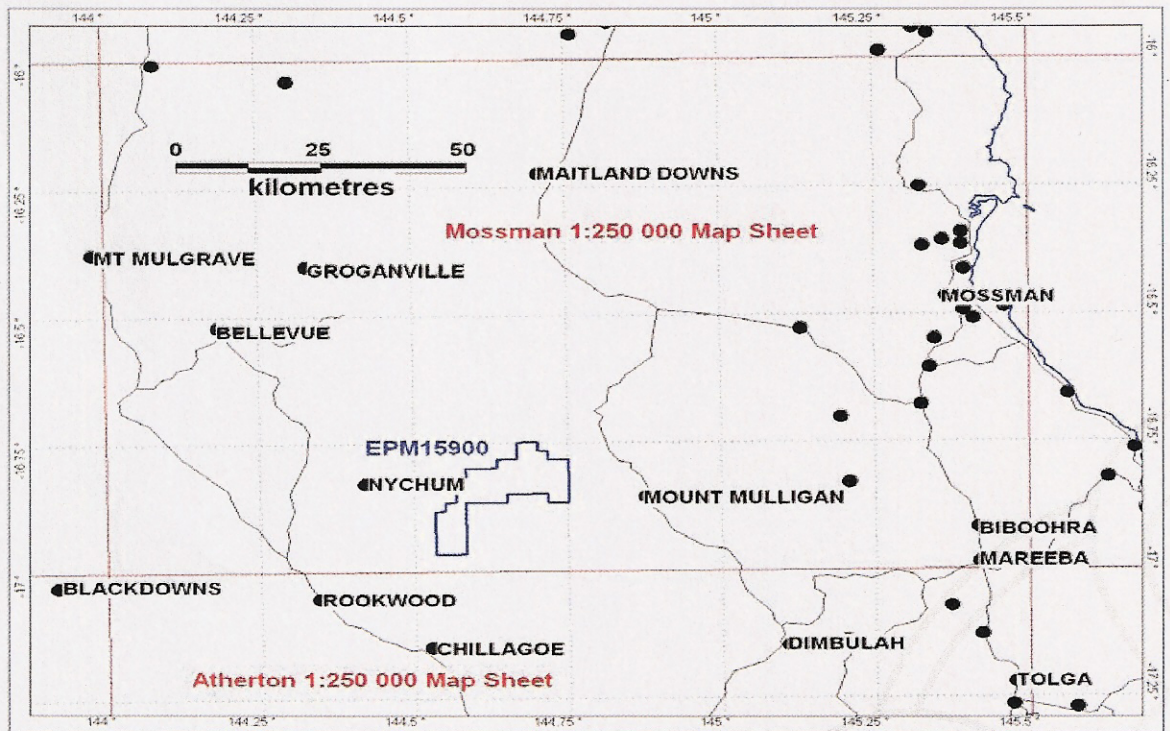


**CWH**

China West International Holdings Limited  
A.C.N. 009 230 111

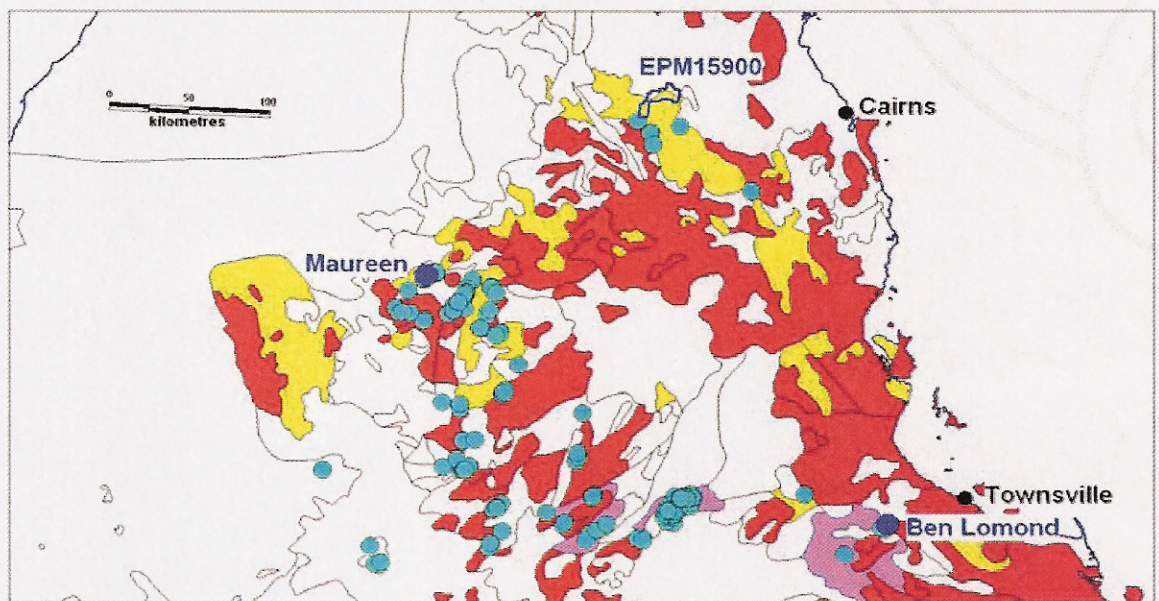
Suite 1503, Level 15  
97-99 Bathurst Street  
Sydney NSW 2000

website  
www.cwh.com.au  
tel  
+61 2 9268 0555  
fax  
+61 2 9268 0155



**Figure 1, Featherbed Uranium Project Location Map**

China West International Holdings Limited will now employ modern exploration techniques to test the uranium potential of the project. The Company is of the view that the structural features and porous lithologies of the EPM are favourable localities to host significant economic deposits of uranium.



**Figure 2, Uranium occurrences (blue dots) in the region of the project area.**



## Exploration targets and program

The following areas have been identified as priority targets for exploration;

- The area of **Anomaly C** which has Uranium anomalies with elevated Uranium/Thorium ratios and which occurs in a structured area where uranium may have accumulated in faults and fractures
- the areas of **Anomalies D and E** which have similar characteristics as Anomaly C
- the area of **Anomaly A** which although appearing to be due to a linear granitic unit, warrants investigation because it gives the highest uranium response in the area and appears to be related to fault control, and
- An area of Antimony (Sb) and Gold (Au) mineralisation in the northwest of the project. Correlations with mapped geology and the airborne data suggest that this mineralisation may be located on a significant northwest trending fault system. The area of the fault and the mineralisation will be an initial focus of the Company's exploration at the project.

(See Figure 3 for location of Anomalies at project area)

Also, various other structural situations and minor uranium anomalies within the project area warrant further investigation as they may host uranium deposits not detected by the airborne survey.

Exploration at the project will involve ground examination involving measurements with a hand held portable spectrometer, geochemical sampling in the form of soil sampling, and rock chip sampling.



China West International  
Holdings Limited  
A.C.N. 009 230 111

Suite 1503, Level 15  
97-99 Bathurst Street  
Sydney NSW 2000

website  
www.cwh.com.au  
tel  
+61 2 9268 0555  
fax  
+61 2 9268 0155

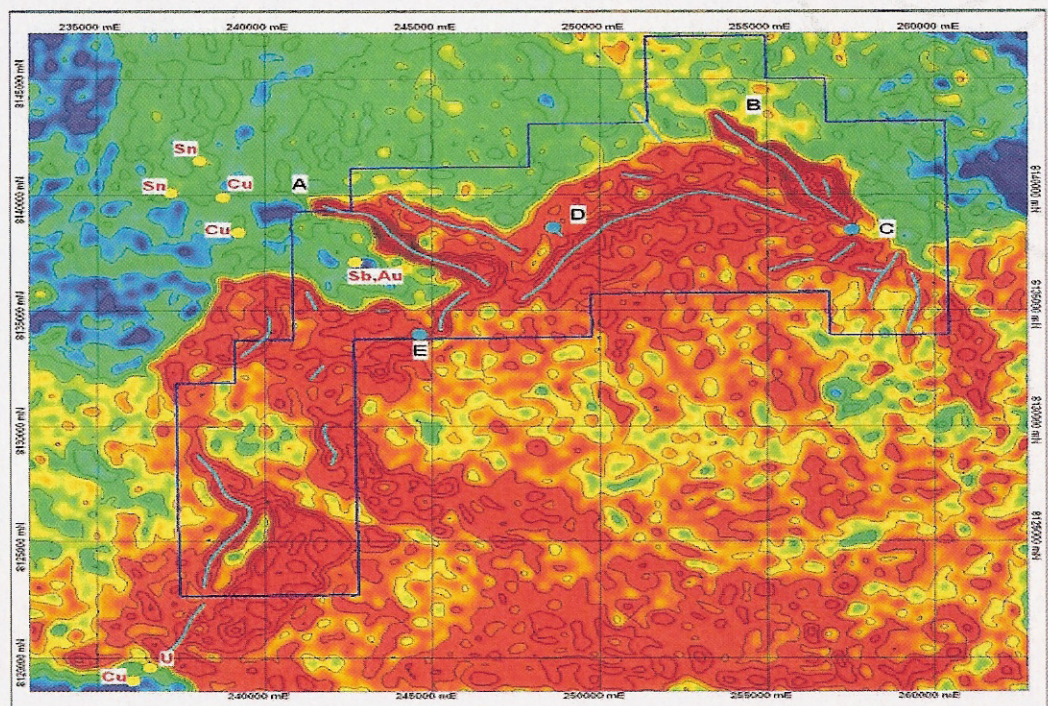
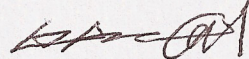


Figure 3, Location of Anomalies at project area



The acquisition of the Featherbed Uranium projects follows the recent announcement of the acquisition of two other highly prospective exploration permits (EPM18160 and EPM18807) in northern Queensland and is part of the Company's strategy to acquire a portfolio of high quality exploration projects in key commodities in major mining regions across the globe.

By Order of the Board,



Luo Bao Cheng  
Chairman

**For further information please contact:**

**INVESTOR RELATIONS**

**Cliff Atkinson**  
Chief Executive Officer  
Phoenix Green Capital Corporation Pty Limited  
Level 10 - 8-19 Loftus Street  
Sydney NSW 2000

Tel: 02 81979593  
Mobile: 0418 409 365  
E: [cliffatkinson@phoenixgreencorp.com](mailto:cliffatkinson@phoenixgreencorp.com)  
Web: [www.phoenixgreencorp.com](http://www.phoenixgreencorp.com)

**PUBLIC RELATIONS**

**James Moses**  
Director  
Mandate Corporate Pty Limited  
Level 1, 275 George Street  
East Sydney NSW 2010

Mobile: 0420 991 574  
E: [james@mandatecorporate.com.au](mailto:james@mandatecorporate.com.au)

**COMPANY SECRETARY/ACCOUNTANT**

**Eng Chuan Ow CPA (Owen)**  
Kingston ECT, Certified Practising Accountants  
Suite 1004, Level 10, 309 Pitt Street  
Sydney NSW 2000  
Tel: 02-9267 5633  
E: [owen@kingstonect.com.au](mailto:owen@kingstonect.com.au)  
Web: [www.kingstonect.com.au](http://www.kingstonect.com.au)



China West International  
Holdings Limited  
A.C.N. 009 230 111

Suite 1503, Level 15  
97-99 Bathurst Street  
Sydney NSW 2000

website  
[www.cwh.com.au](http://www.cwh.com.au)  
tel  
+61 2 9268 0555  
fax  
+61 2 9268 0155



## About China West International Holdings Limited

China West International Holdings Limited (ASX: CWH) is a diversified ASX-listed materials company. On 14 July, 2003 the Company changed its name from Armourglass Limited after a change of majority shareholders. It was listed on the ASX in 1988 and is headquartered in Sydney, Australia, and has an operational base in Chongqing, in Western China. The Company has a current focus on acquiring a portfolio of quality resource exploration projects. It has three projects in northern Queensland and is seeking to accumulate other exploration and development projects in key commodities in major mining regions around the globe, as part of the Company's strategy to become a significant emerging resources exploration and development group. The Company holds a positive view for the future outlook of the uranium sector and, in addition to the acquisition of the Featherbed Uranium project, it also has a strategic shareholding in ASX-listed uranium company Uranium Exploration Australia Limited (ASX : UXA) since 2007.



**CWH**

China West International  
Holdings Limited  
A.C.N 009 230 111

Suite 1503, Level 15  
97-99 Bathurst Street  
Sydney NSW 2000

website  
[www.cwh.com.au](http://www.cwh.com.au)

tel  
+61 2 9268 0555

fax  
+61 2 9268 0155