

19 February 2010

The Manager
Company Announcements
Australian Securities Exchange Ltd
Level 5, 20 Bridge Street
Sydney NSW 2000



ABN 91 124 752 745
www.gbmr.com.au

Dear Sir,

Progress Report - Brightlands Copper Gold Project - Qld

GBM Resources Limited (ASX code "GBZ") is pleased to advise that additional drilling programs are being scheduled by the Company to commence in north Queensland from next month, following initial diamond drilling on the Brightlands copper gold project in December last year.

Early results from the maiden four-hole diamond drilling program at the Tiger T1 and T3 targets in the far northeast corner of Brightlands, have provided a large volume of data.

This data strongly supports the existence of a large hydrothermal system with associated copper, cobalt and gold enrichment. The new drilling program is planned to test this structure at depth and along strike during the coming field season, commencing next month

Geological and geochemical data for the nearby Tiger T2 and T4 zones is also being compiled to assist in designing the expanded Tiger drill program.

Planning has commenced for initial drill testing from next month of the Milo and Highway targets – a highly prospective copper gold area to the west of Tiger and in the far northwest corner of the Brightlands acreage.

Results to date from the December drill program at Tiger are as follows:

Tiger Prospect:

Tiger T1 target

- Two diamond drill holes (total of 439 metres) were completed during December to test the 1.5 kilometre Tiger (T1) structural zone.
- Results from BTDD004 testing the T1 Zone confirm a 12-metre zone of elevated copper mineralisation averaging 0.22% Cu from 55 to 67 metres down hole with a peak value of 0.51% Cu. Preliminary interpretation indicates this is close to true width.
- Copper in BTDD004 is associated with elevated gold (peak value 0.3ppm), cobalt (peak value 444ppm), silver (peak value 87ppm), molybdenum (peak value 64ppm).

Registered Office: Level 1, 335 Churchill Ave
Subiaco WA 6008
PO Box 608

3450

Subiaco WA 6904
T 08 9388 6899
F 08 9388 6977

Exploration Office: 10 Parker Street,
P O Box 658
Castlemaine VIC

Tel / Fax 03 5470 5033

- All holes recorded strong deformation, intense alteration and a range of key features, further confirming the extensive nature of the hydrothermal system which is interpreted to be part of the same system hosting the nearby Rocklands copper gold deposit.
- Screen fire checks of intervals where native copper was observed in logging to ensure that the possible nugget effect of native copper was properly assessed, has confirmed variable upgrading of original results from 3 to 33%.



Hole BTDD001- Chalcopyrite Carbonate veins in fresh siltstone @ 68m.



Hole BTDD004- Chalcopyrite and carbonate veining @ 94m.

Registered Office: Level 1, 335 Churchill Ave
Subiaco WA 6008
PO Box 608

3450

Subiaco WA 6904
T 08 9388 6899
F 08 9388 6977

Exploration Office: 10 Parker Street,
P O Box 658
Castlemaine VIC

Tel / Fax 03 5470 5033

Tiger T3 Target:

- Two diamond holes (total of 636 metres) were completed in December to test the very intense T3 IP anomaly. Both holes recorded only anomalous copper and the sulphide mineralisation encountered does not appear to explain the strong Induced Polarisation (IP) chargeability anomaly. The 3D modelling of data from the IP survey previously confirmed a deep target zone for sulphide hosted Cu mineralisation. Work is currently underway to reconcile IP target modelling and what was recovered in the core samples.

Milo Prospect Area:

- Recent field work confirmed location details of previous drilling completed at the Milo Prospect more than 30 years ago.
- Results from previous drilling demonstrate multiple broad zones of copper mineralisation with best results*² including: ML05 7.7metres @ 2.2% Cu from 43.1 to 53.8 metres downhole and 12.3 metres @ 0.3% Cu, MD08 38.5 metres @ 0.4% Cu from 87.7 to 126.2 metres downhole.
- Systematic rock 'chip-channel' sampling completed during the December quarter, confirms the widespread copper mineralisation indicated by GBM's soil sampling and previous sampling. The peak Cu value obtained in this round of sampling was 3.5% Cu with samples also confirming highly anomalous Co, Mo and U values in the area.

Planning has commenced for initial drill testing of the Milo target areas in the coming field season.

Registered Office: Level 1, 335 Churchill Ave
Subiaco WA 6008
PO Box 608

3450

Subiaco WA 6904
T 08 9388 6899
F 08 9388 6977

Exploration Office: 10 Parker Street,
P O Box 658
Castlemaine VIC

Tel / Fax 03 5470 5033

Highway Prospect Area:

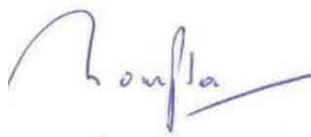
- Initial research has now located company reports covering previous drilling and sampling of three drillholes at the Highway Prospect (abuts the Milo prospect) and completed over 30 years ago.
- The best intersection is approximately 30 metres downhole and averaging 0.4% Cu*¹. Logging confirms supergene processes evidenced by the logging of native copper in some core intervals. Despite poor recorded core recoveries, these results are sufficient to confirm the occurrence of significant width and tenor of copper mineralisation with associated cobalt in shallow drilling (less than 100 metres below surface).
- During December, the Brightlands Project ground position was expanded with application for the Wakeful and Highway EPM areas which include an additional 49 square kilometres (see attached figures). The Highway licence includes extensions to the Highway Prospect.

Highway is a priority target and field work is underway to ensure this is drill ready in the coming field season.

The Milo and Highway prospects lie within the Brightlands Copper Gold Project area and are located on a regionally significant structural trend, the 'Cloncurry Flexure' which is also interpreted to host the Tiger and Rocklands fault systems. Both have potential for a large Iron Oxide Copper Gold system.

The Tiger Prospect is a priority target for the Company to advance during 2010.

Yours Sincerely,



Peter Thompson
Managing Director

Registered Office: Level 1, 335 Churchill Ave
Subiaco WA 6008
PO Box 608

3450

Subiaco WA 6904
T 08 9388 6899
F 08 9388 6977

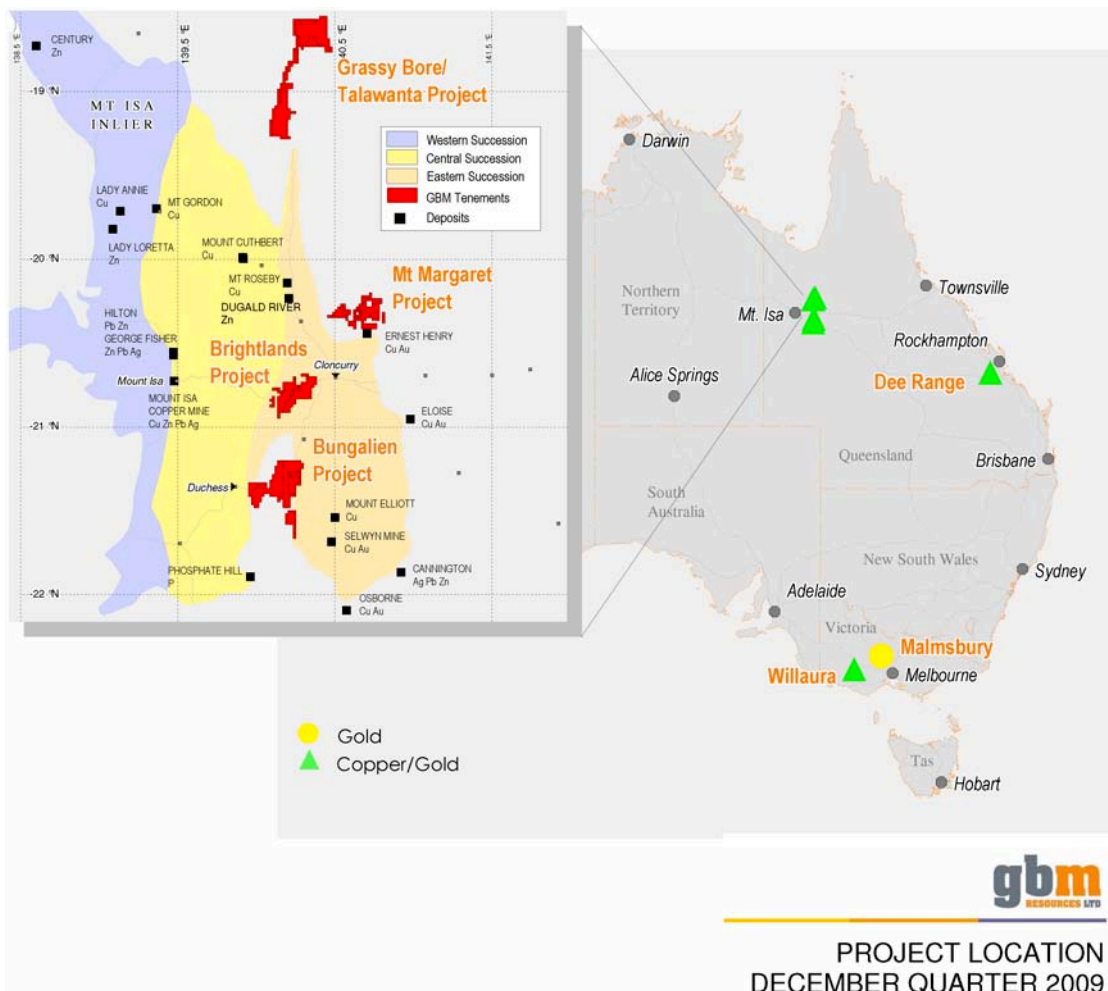
Exploration Office: 10 Parker Street,
P O Box 658
Castlemaine VIC

Tel / Fax 03 5470 5033

^{*1}. Simple arithmetic average of results from open file report CR7223. No detail of sampling or analytical method are available at this time. As a consequence of this, and in conjunction with indicated poor core recovery these results should only be taken as indication of the presence of copper mineralisation and should not be considered to constitute an accurate representation of grade or width of the mineralised zone.

^{*2} Length weighted average of results from 'chip' sampled core with poor indicated core recovery. (From: Elliot, Brian & Assoc. 1970. Summary of work completed between April and September 1970 at Milo Mine. Ann Report by Tasman Minerals NL.) As a consequence of this, and in conjunction with indicated poor core recovery these results should only be taken as indication of the presence of copper mineralisation and should not be considered to constitute an accurate representation of grade or width of the mineralised zone.

The information in this report that relates to Exploration Results and Mineral Resources is based on information compiled by Neil Norris, who is a Member of The Australasian Institute of Mining and Metallurgy. Mr Norris is a full-time employee of the company. Mr. Norris has sufficient experience which is relevant to the style of mineralisation and type of deposit under consideration and to the activity which he is undertaking to qualify as a Competent Person as defined in the 2004 Edition of the 'Australasian Code for Reporting of Exploration Results, Mineral Resources and Ore Reserves'. Mr. Norris consents to the inclusion in the report of the matters based on his information in the form and context in which it appears.



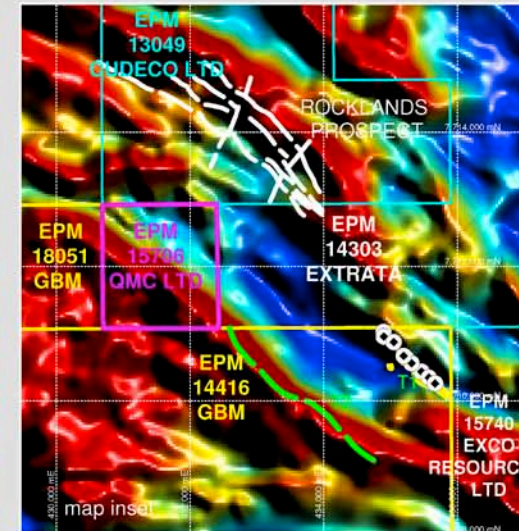
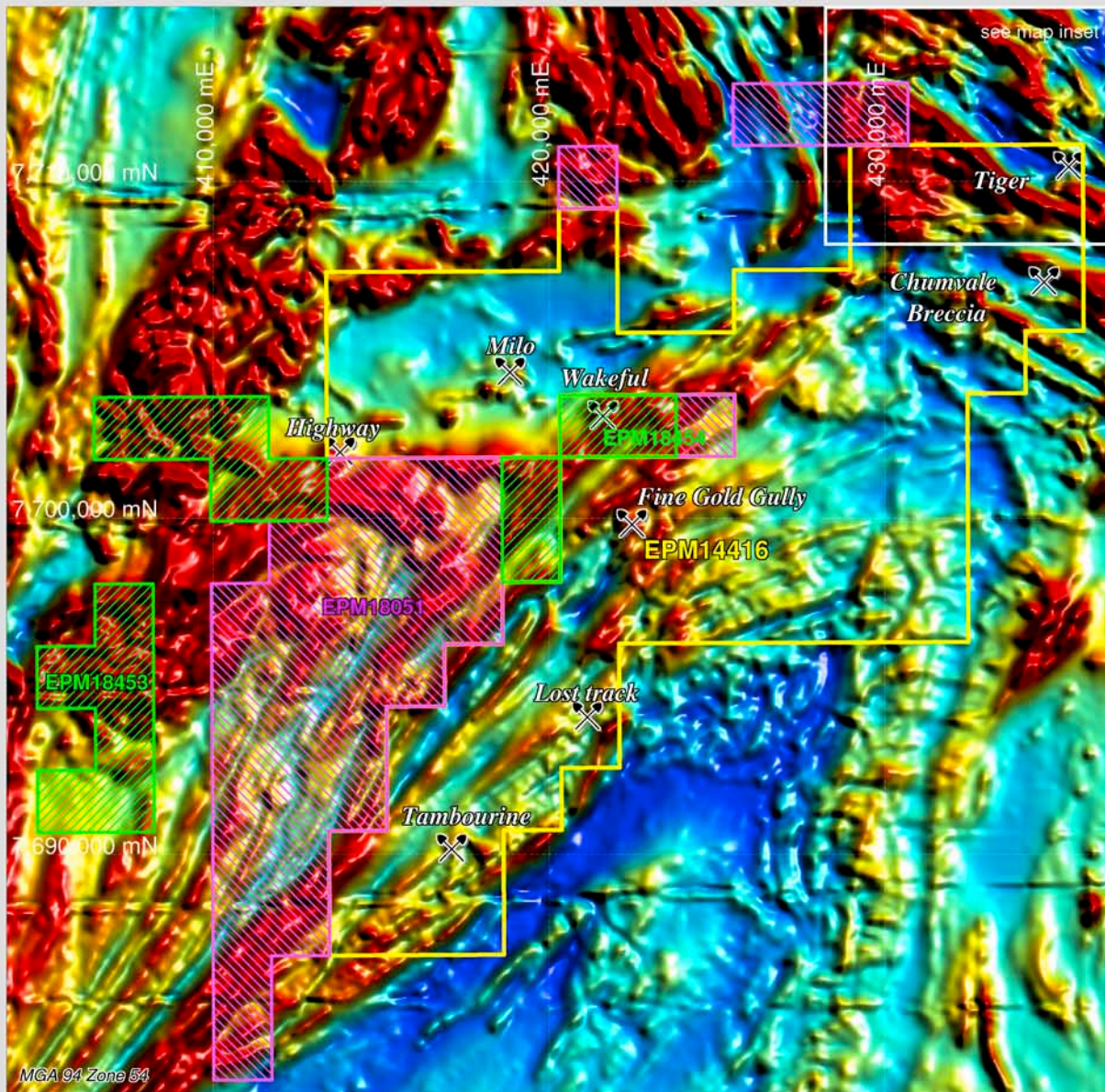
Registered Office: Level 1, 335 Churchill Ave
 Subiaco WA 6008
 PO Box 608

3450

Subiaco WA 6904
 T 08 9388 6899
 F 08 9388 6977


Exploration Office: 10 Parker Street,
 P O Box 658
 Castlemaine VIC

Tel / Fax 03 5470 5033



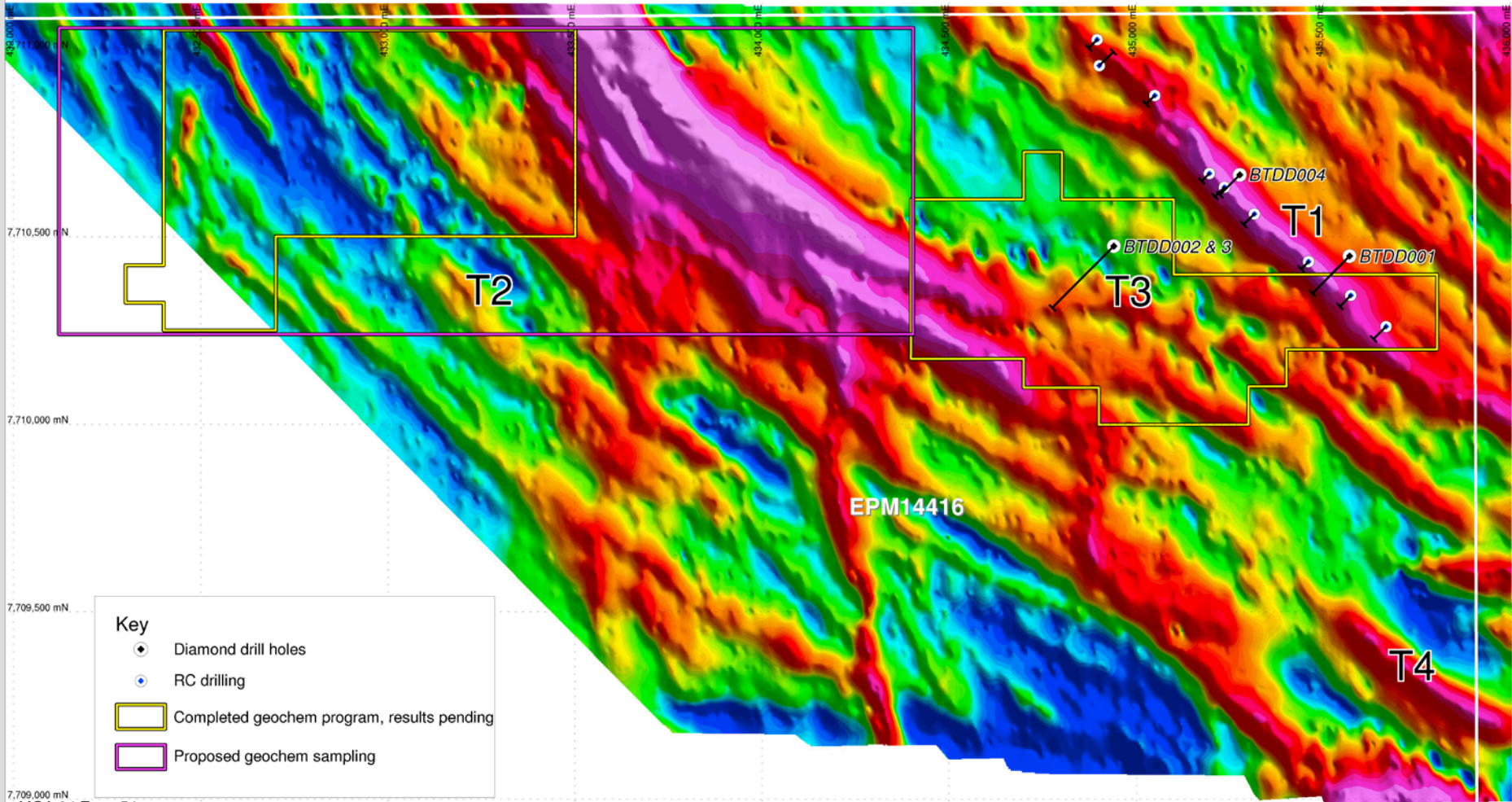
TMI Image

KEY

-  GBM granted tenement
-  GBM application with priority
-  GBM competing application
-  Prospect location



**BRIGHTLANDS PROJECT
TENEMENT STATUS**



MGA 94 Zone 54
 Backdrop, SAM EQMMR Image, range -32 (dark blue) to 65 (bright pink) pT/Amp



PROJECT
 LOCATION

**BRIGHTLANDS PROJECT
 TIGER PROSPECT
 DRILLING AND SAM**

