



Hawthorn
RESOURCES

ABN 44 009 157 439

Level 2, 90 William St
Melbourne Victoria 3000
Australia

Telephone: +61 3 9605 5950

Facsimile: +61 3 9605 5999

Email: info@hawthornresources.com

www.hawthornresources.com.au

01 July 2010

Results from Deep South, South Laverton and Mt Bevan RC Drilling

- **9 metres @ 3.15 g/t Au (incl. 2 metres @ 8.65 g/t Au) and**
- **9 metres @ 2.08 g/t Au (incl. 3 metres @ 5.43 g/t Au)**

intersected along strike of **Deep South** gold mine and resource. Mineralised horizon **open** along strike and at depth – follow up and infill drilling to commence shortly.

- **4 metres @ 11.2 g/t Au**

intersected at the **Exile Prospect** in the **Trouser Legs Project** area. Drilling confirms historic result of **5 metres @ 31.1 g/t Au** from shallow levels.

- **8 metres @ 1.22 g/t Au**

intersected in initial drilling at the **Edjudina Mine** area. Historic stopes intersected - follow up drilling required.

- **70 metres @ 35.9% Fe to EOH and**
- **62 metres @ 38.7% Fe to EOH**

intersected from **Mt Bevan Magnetite** horizon. Horizon strike confirmed over **6.0 km** of strike - definition drilling program planned.

Introduction

Hawthorn Resources Limited is pleased to update shareholders with results to hand from RC drilling carried out during April and May 2010 in the Deep South, Mt Bevan, Edjudina (Triumph) and Trouser Legs Project Areas within its portfolio of West Australian tenements.

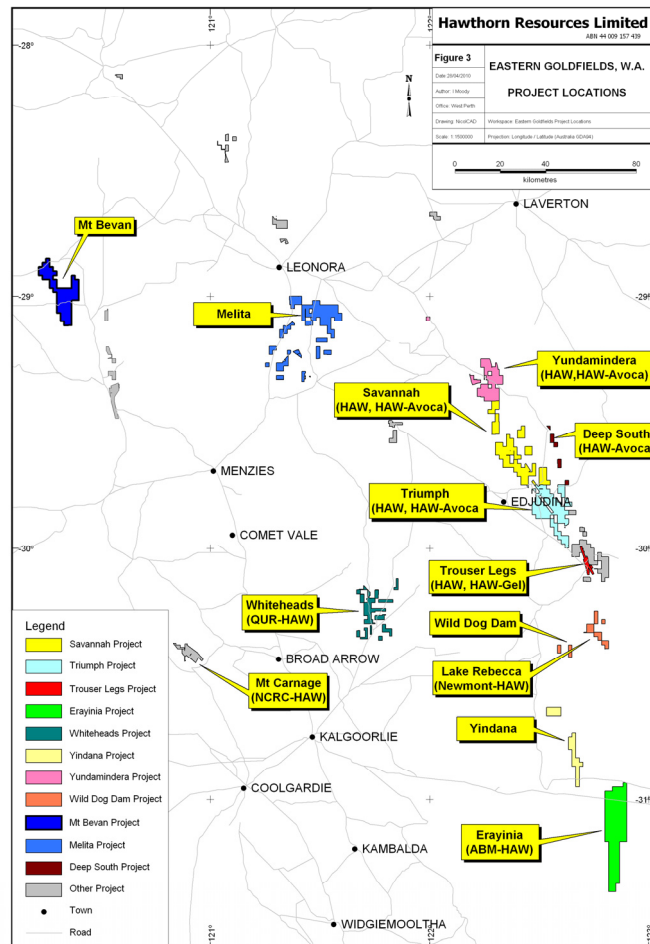


Figure 1 – Hawthorn Resources Eastern Goldfields Project Locations

The program consisted of Deep South 22 holes / 2144 metres, Edjudina (Triumph) (11 holes /1023 metres), Trouser Legs (7 holes / 588 metres) and Mt Bevan (15 holes / 1160 metres). Most assays from this program are now complete – some follow up sampling is underway.

Hawthorn is excited by the gold results in the Deep South area as a significant mineralised horizon has been intersected along at least 1000 metres of strike. This horizon is considered analogous to mineralisation in the adjoining Deep South-Mexico gold orebodies owned by Saracen Mineral Holdings Limited. A follow up and infill drilling program will commence as soon as a further Program of Work submission is approved (expected mid-late July 2010).

Deep South Project

(Hawthorn Resources 80%, Avoca Resources 20%).

The project area lies directly along strike to the south of Deep South Mine approximately 170 km to the north east of Kalgoorlie in Western Australia. Hawthorn holds tenements in this project area in Joint Venture with ASX 200 listed gold producer, Avoca Resources Limited.

The Mine, owned by Saracen Mineral Holdings Limited, hosts an Indicated and Inferred Resource of approximately 252,000 ounces of gold from the contiguous Deep South and Mexico orebodies.

Initial drill testing of targets along strike of the interpreted Deep South - Mexico ore horizon is now complete with 22 RC holes for 2144 metres drilled on several targets.

As previously reported a deeply weathered gossan / quartz-carbonate-sulphide horizon has been intersected (believed to be similar to the ore horizon mined at Deep South and identified at Mexico) in the interpreted strike extension of the known resources.

Significant gold mineralisation has now been discovered in the two most southern drillholes to intersect this horizon.

- **9 metres @ 3.15 g/t Au from 79 metres depth (incl. 2 metres @ 8.65 g/t Au from 85 metres) in DSC019 and**
- **9 metres @ 2.08 g/t Au from 6 metres depth (incl. 3 metres @ 5.43 g/t Au from 6 metres) in DSC018**

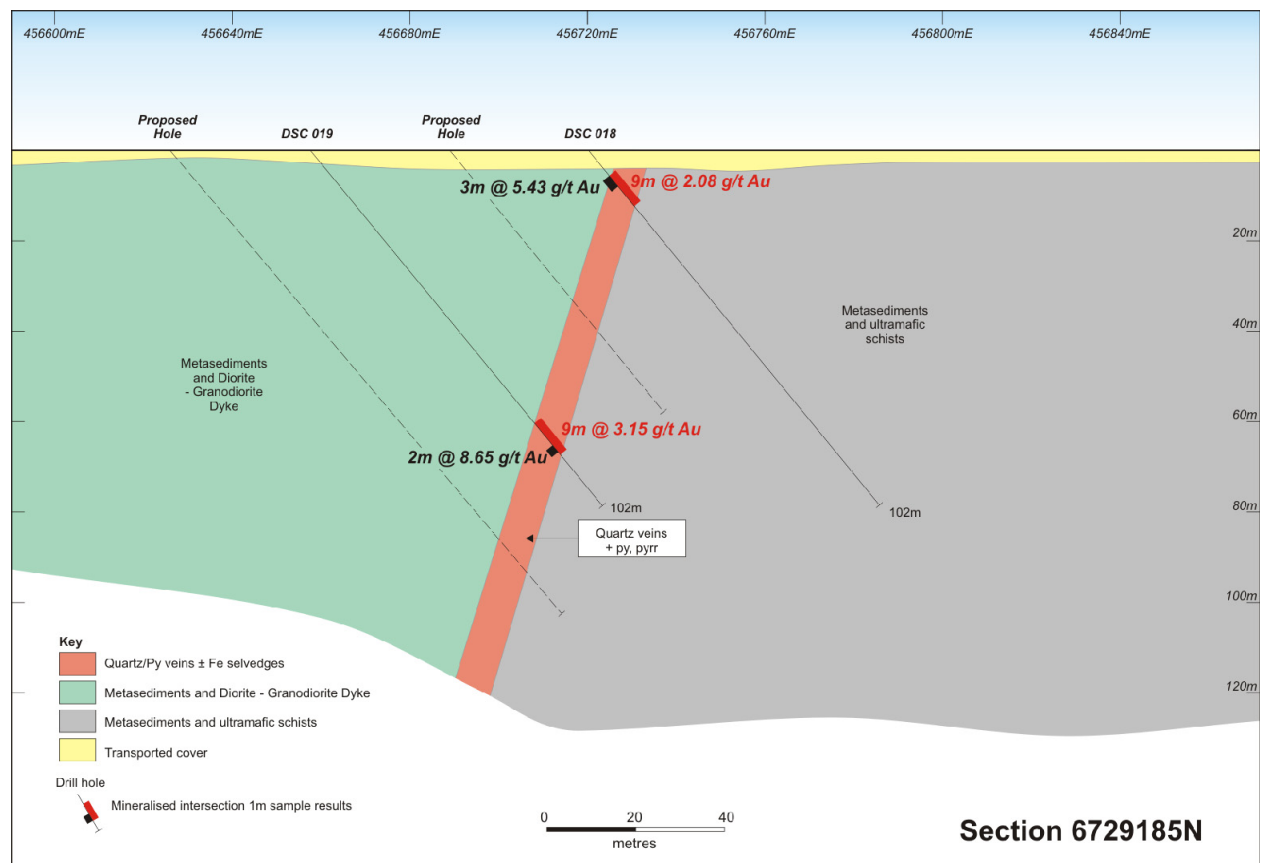


Figure 2 – Deep South Section 6729185 N

Both intercepts occur in a series of quartz ± pyrite-pyrrhotite veins with minor accompanying arsenic and antimony sulphides (arsenopyrite and stibnite).

Hawthorn is extremely encouraged that the gold mineralisation in this discovery zone extends to surface, is open at depth, and along strike.

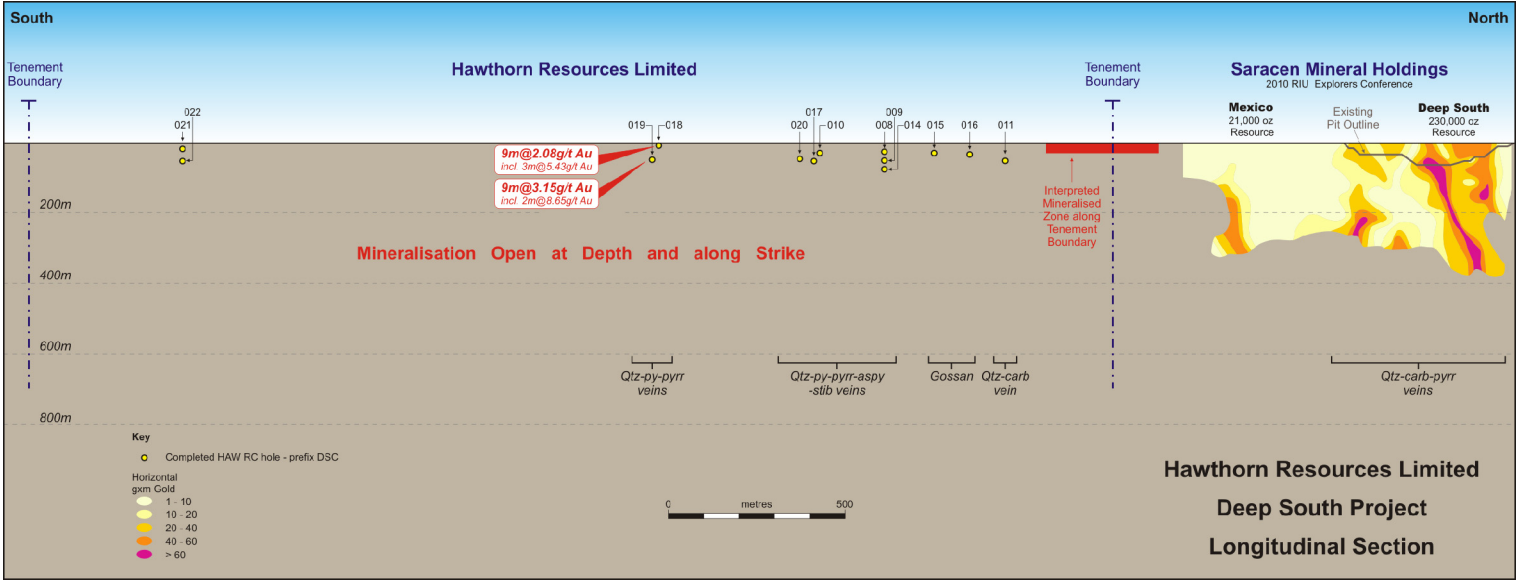


Figure 3 – Deep South Longitudinal Section

In the above Figure 3, drillhole 500 – 1000 metres north of the “discovery” section (towards the Deep South Mine) have consistently intersected a 4 - 9 metre wide horizon comprising massive quartz ± carbonate-pyrrhotite-pyrite-arsenopyrite-stibnite veins.

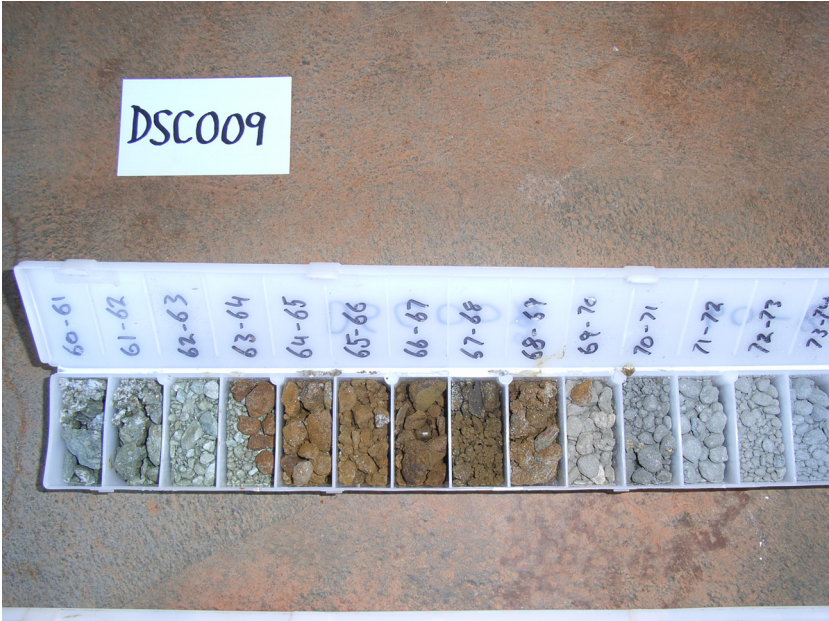


Figure 4 – Quartz-Sulphide veins DSC009

The quartz sulphide (± gold) horizons intercepted are considered similar to those reported from within the Deep South-Mexico Resource. It should also be noted that at Deep South high gold grade shoots (results to 12 metres @ 10.6 g/t Au) occur, often extending to depths of over 300 metres.

A detailed infill and step-out drilling program to test the discovery horizon has been submitted for WA Department of Mines and Petroleum approval, with drilling to commence immediately upon grant in mid-late July.

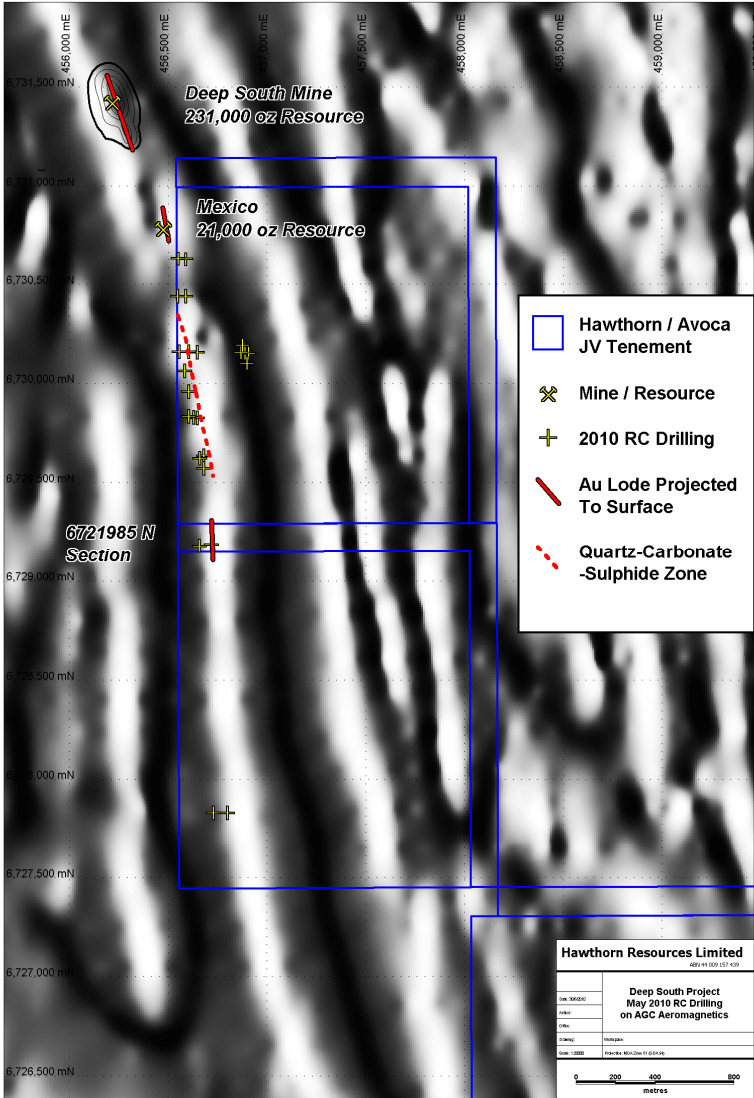


Figure 5. Deep South RC drilling – Plan View

Trouser Legs Project

(Hawthorn Resources 70%, Gel Resources 30%) incorporating the Anglo Saxon gold project.

The project area is situated approximately 140 kilometres east of Kalgoorlie, and 35 kilometres to the east of the Carosue Dam Operation of Saracen Mineral Holdings Limited. The project area hosts the **Anglo-Saxon** Mining Area

A limited RC program was carried out in the **Wessex**, **Exile** and **Exile North** prospects where shallow RAB drilling late in 2009 returned strongly anomalous gold results.

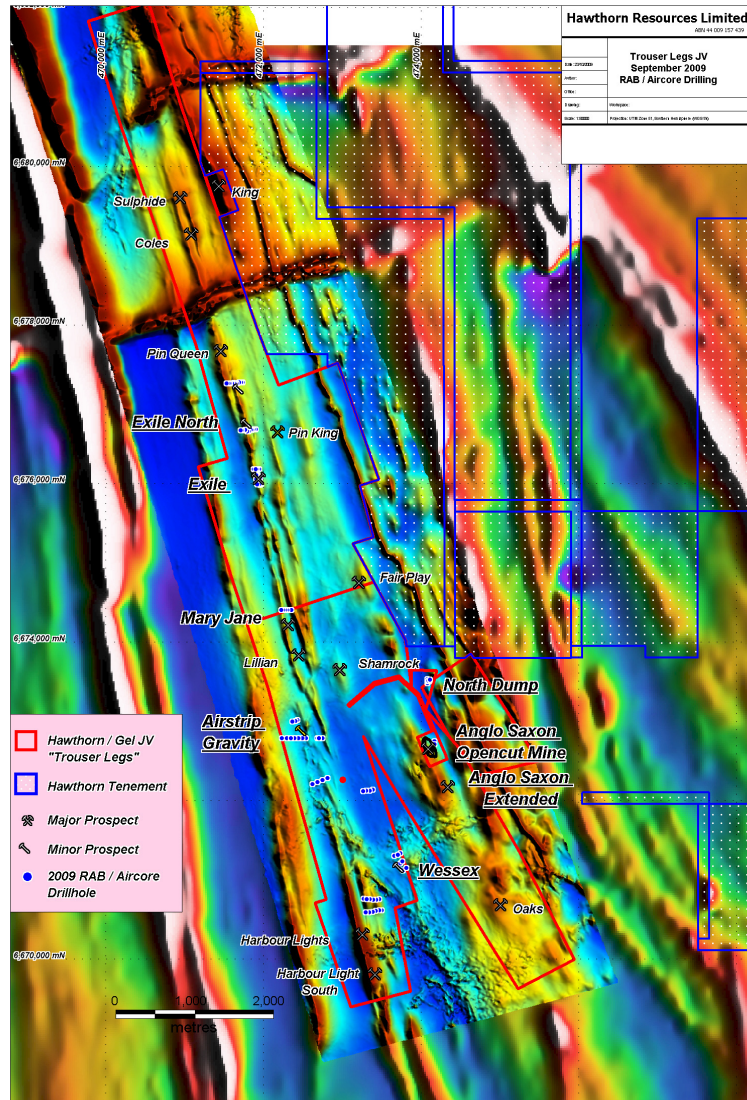


Figure 6. Trouser Legs JV – Prospect Location on Aeromagnetics

At the **Exile** Prospect three RC holes were drilled, with significant results returned from composite samples in two of the holes, confirming historic high grade gold results.

Historic intercepts included **5.0 metres @ 31.1 g/t Au** from **21 metres (LRC133)**, **5.0 metres @ 4.9 g/t Au** from **25 metres (LRC232)**, and **4.0 metres @ 32.3 g/t Au** from **18 metres (LRC134)**.

This new drilling identified the main mineralised quartz vein, and also a hanging wall mineralised quartz vein. Results from this drilling includes

- **4 metres @ 11.2 g/t Au** from **52 metres depth in PINC205 (Main Vein)**,
- **4 metres @ 1.05 g/t Au** from **24 metres depth in PINC205 (H/Wall Vein)**,
- **4 metres @ 1.00 g/t Au** from **12 metres depth in PINC204 (H/Wall Vein)**

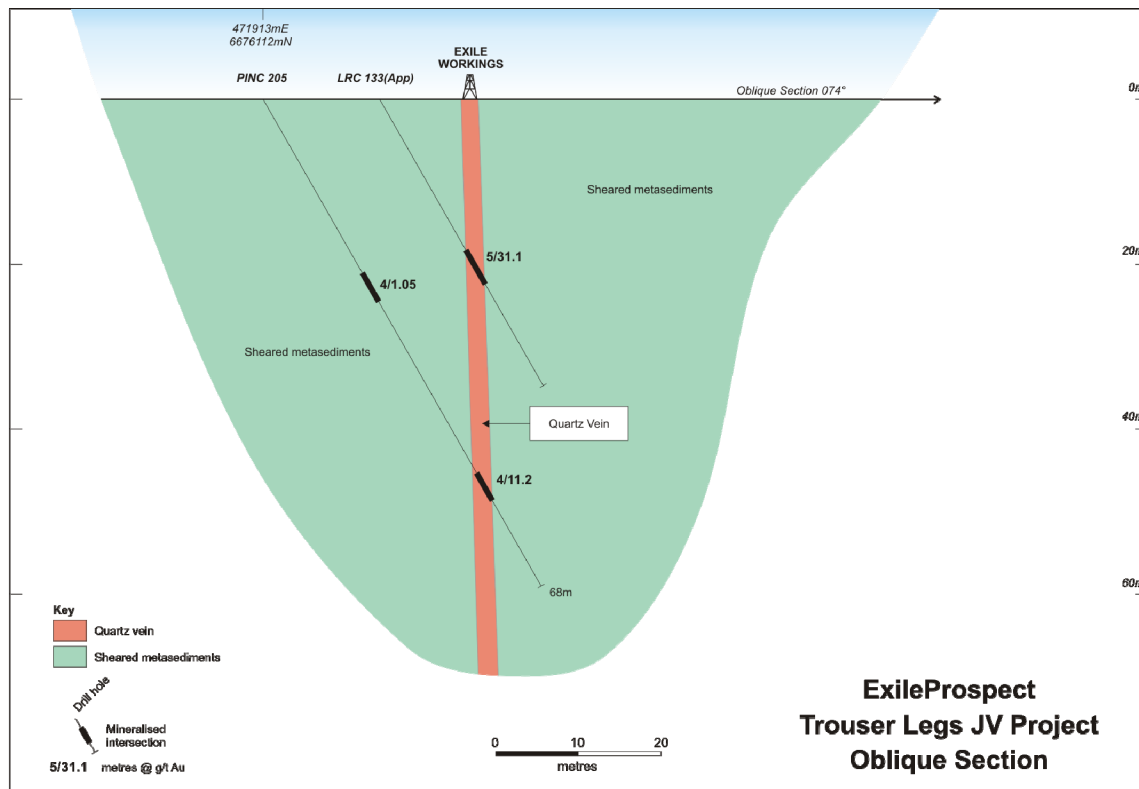


Figure 7. Trouser Legs JV – PINC205 Section at Exile

The result from drillhole PINC205 confirms the high grade gold grade nature of the primary quartz veins at this prospect.

One metre resplit assays of all mineralised zones have been submitted for assay. Follow up drilling is required to further test this high grade mineralised horizon which remains open at depth and along strike.

At the **Wessex Prospect** further gold results were obtained from the extensive saprolitic clay layer observed in the prospect area from the two completed RC drillholes.

Results from this drilling included

- **4 metres @ 0.81 g/t Au from 48 metres depth in PINC201**
- **8 metres @ 0.83 g/t Au from 44 metres depth in PINC202**

These results continue to extend the observed Au-in-saprolite layer at this prospect that has previously returned values including 8 metres @ 7.26 g/t Au, 6 metres @ 1.38 g/t Au, 4 metres @ 1.83 g/t Au, 12 metres @ 1.38 g/t Au and 18 metres @ 0.40 g/t Au.

Deep fresh rock intercepts will be sought following re-assessment of detailed aeromagnetic and ground gravity data from within this area.

At **Exile North** a drillhole beneath the previously reported RAB intercept of **36 metres @ 1.26 g/t Au in PSB056** returned an anomalous result of **28 metres @ 0.30 g/t Au** from **20 metres depth** in strongly weathered sheared sediments.

No drilling was undertaken in the northernmost section of the prospect where drill intercepts of 13 metres @ 1.68 g/t Au, 12 metres @ 0.32 g/t Au, 12 metres @ 1.53 g/t Au and 16 metres @ 0.74 g/t Au, were returned from 20 m spaced consecutive RAB holes (PSB041 – PSB044) due to limited access following drilling pad and track washouts, with the main target in this area remaining untested.

Triumph Project – Edjudina Mine Prospect
(Hawthorn 100%).

This prospect area lies approximately 140 km to the north east of Kalgoorlie in Western Australia and 20 kilometres to the east of the operating Porphyry Gold Mine (Saracen Mineral Holdings Limited). The prospect covers a strike extensive series of historic gold mines developed on high grade quartz lodes. Historic reported production from this group of mines is reported as 21,950 tonnes with 33,215 oz of gold produced.

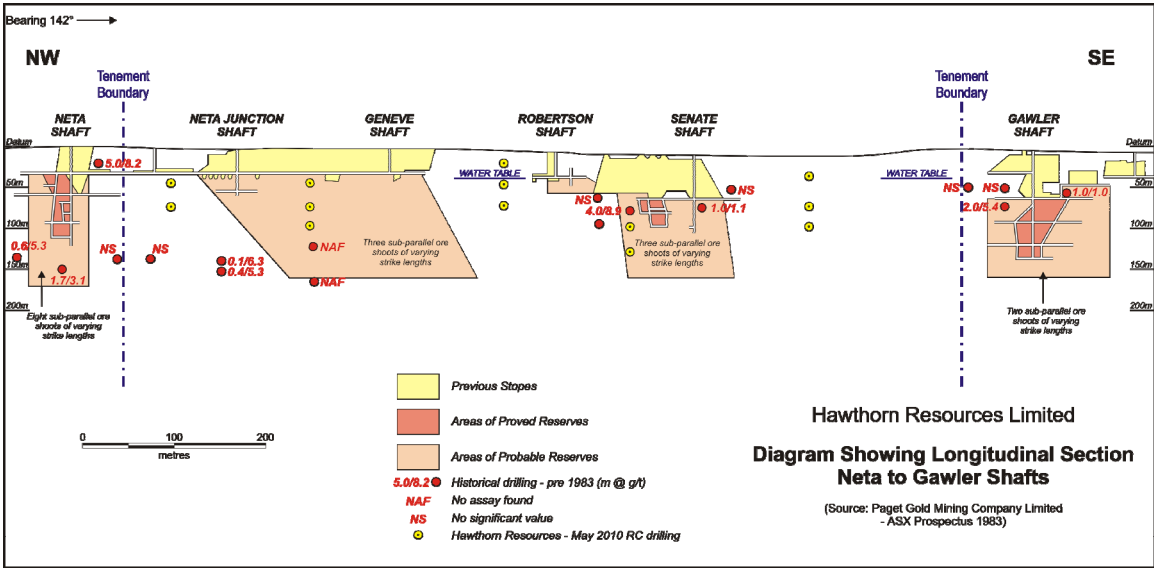


Figure 8. Edjudina Mine Area – Historic Longitudinal section and proposed May 2010 RC drilling program

An initial drilling program of 4 fences of drillholes (9 holes for 910 metres) was undertaken to identify the morphology and orientation of the lode horizon. Each section intercepted the interpreted lode position, however stopes (historic mine workings) were encountered within the most northerly section drilled to the north of the Neta Junction Mine workings.

Drilling between the Senate and Gawler shafts returned a near surface composite sample, in an area with limited workings of

- **8 metres @ 1.22 g/t Au from 36 metres depth in EDC006**

The intercept is within a 2.5 metre wide quartz-carbonate vein, assays from individual metre samples are pending. Two deeper holes beneath the Senate Shaft were deferred, these will be drilled in an upcoming program with follow up holes in close proximity to EDC006.

Mount Bevan Project – Western Australia
 (Hawthorn Resources 100%)

This project area is situated approximately 100 kilometres west of Leonora, Western Australia and extends for 25 kilometres northwest along strike of the “Mt Mason Iron Ore Resource” (5.75 Mt @ 59.9% Fe) of Jupiter Mines Limited (‘Jupiter’) in a package of BIF’s, sediments, and volcanics. In addition Jupiter has announced a large conceptual magnetite resource of 1.0 Billion tonnes of magnetite ore at their Mt Ida Project Area approximately 7.0 kilometres south of the Project area.

Hawthorn recommenced RC drilling at Mt Bevan during March and April with a program designed to explore previously untested targets, and further delineate the thick, strike extensive, magnetite mineralised horizon identified in previous programs.

Only 15 of the planned holes were completed due to the drill rig utilised being unable to penetrate through the target magnetite bearing units.

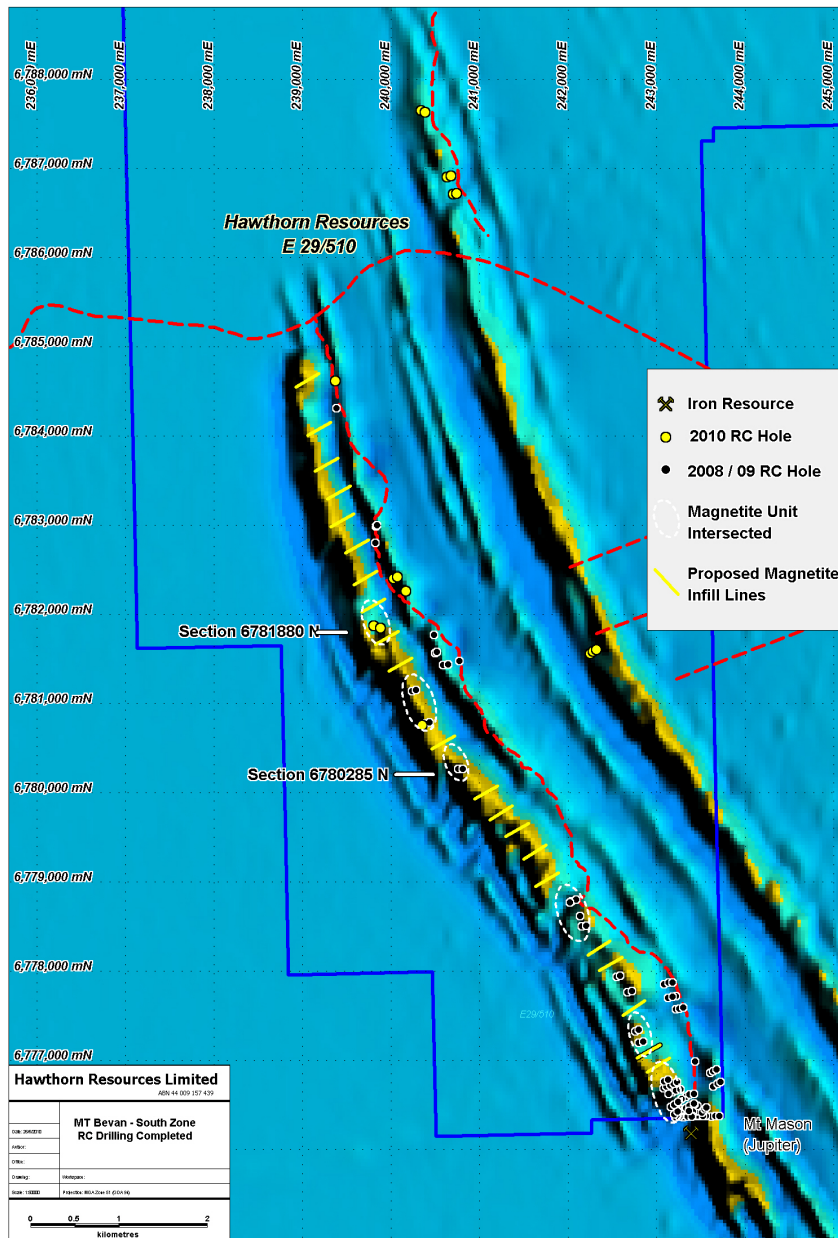


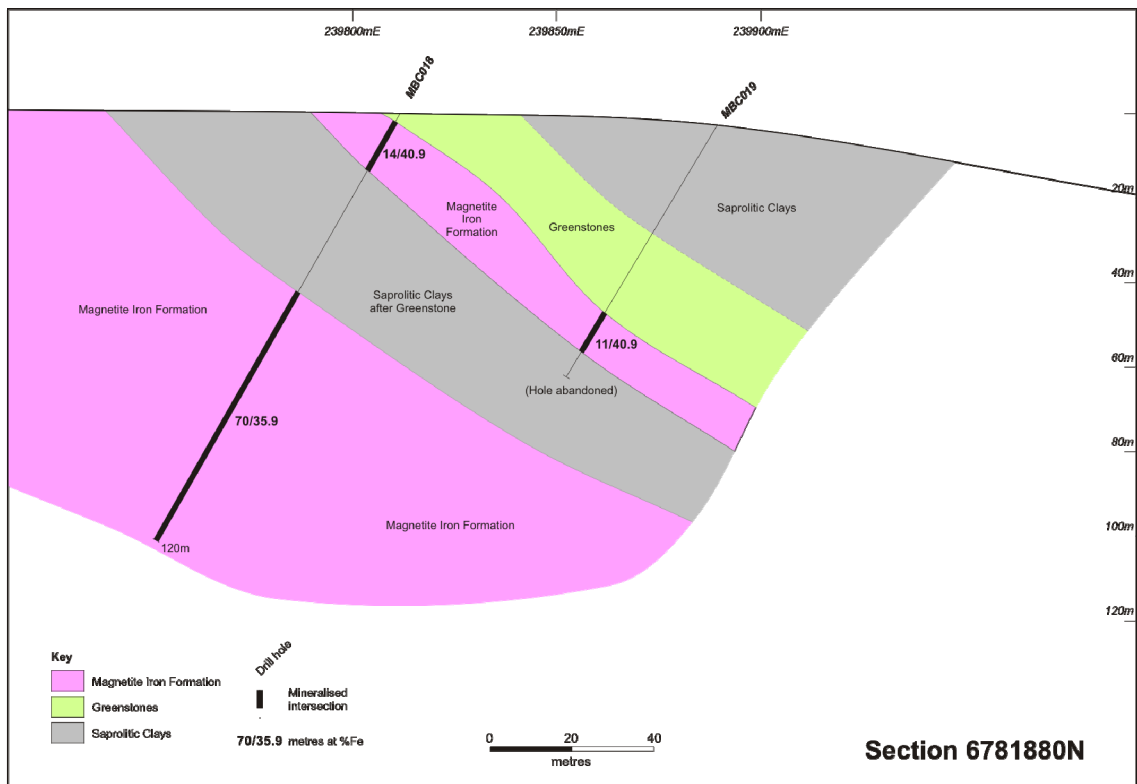
Figure 9. Mt Bevan South Zone

Nonetheless, results obtained from holes into the main magnetite unit continue to exhibit typical thick consistent exposures of magnetite iron formation, with drillrig limitations preventing complete section through the unit.

Drillhole MBC018 ended in magnetite mineralisation at 120 metres downhole depth, confirming the continuity of the magnetite iron formation along 6.0 kilometres of strike from the southern boundary of the tenement.

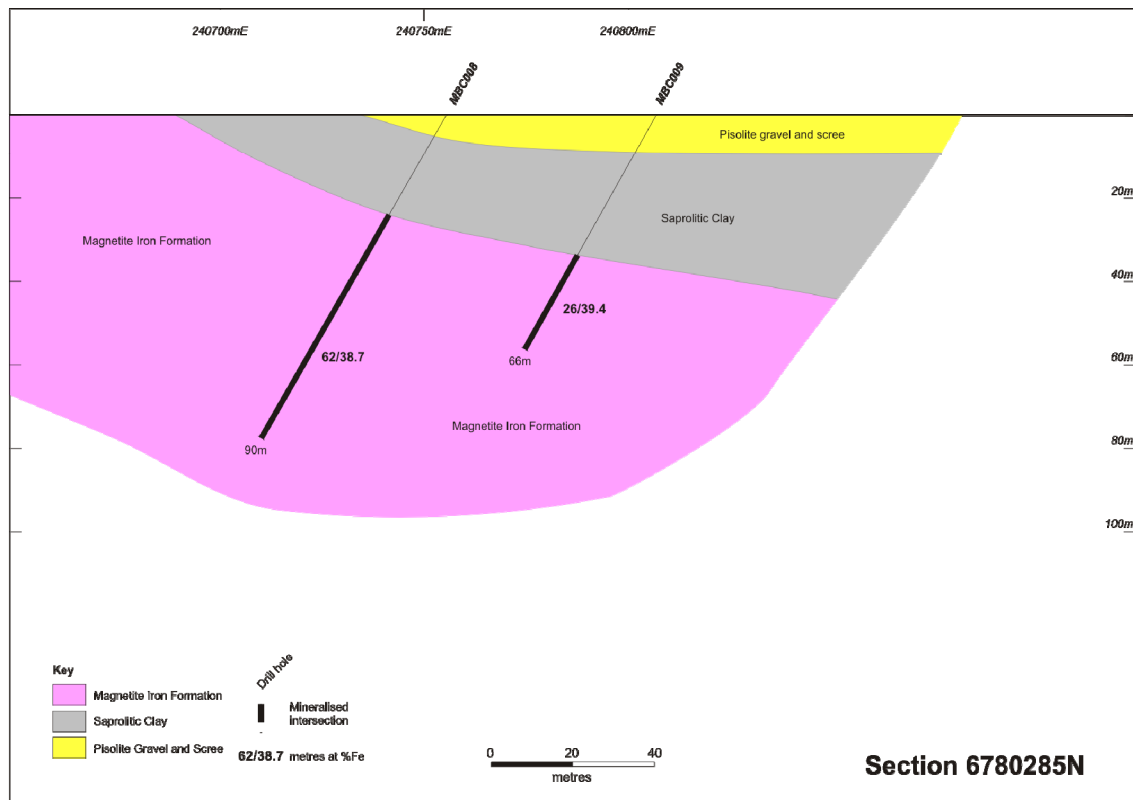
Results from the magnetite rich horizon included:

- **70 metres @ 35.9% Fe from 36 metres to EOH in MBC018**



Resampling of sections to the south further confirmed the continuity and width of the magnetite unit with new results of:

- **62 metres @ 38.7% Fe from 28 metres to EOH in MBC008**
- **26 metres @ 39.4% Fe from 40 metres to EOH in MBC009**



Composite samples have been collected from both sections above and have been submitted for Davis Tube testwork to assess the recoverable iron content.

These strong and consistent intercepts, and the broad magnetite intercepts previously announced on sections 100, 200, and 400 metres north of the tenement boundary (i.e. 6.0 kilometres south of drillhole MBC018) have encouraged Hawthorn to proceed with an infill drilling program to test the potential of the identified magnetite horizon.

The program initially will infill existing drill hole sections to approximately 400 metre section spacing over 7.2 kilometres of strike from the southern boundary of the tenement, with subsequent infill to 200 metre section likely to be required to obtain a JORC compliant resource. Both the grade and width of the magnetite horizon is consistent with the announced resource at Mt Ida by Jupiter Mines Limited. Consequently it is expected that infill drilling with a higher capacity drill rig will define a major resource of this style of mineralisation.

Drill testing of targets in the central portion of the tenement area was disappointing with limited intersections of haematite identified. Re-assessment of targets in this area is underway.

For further information please contact

Mourice Garbutt Company Secretary 03 9605 5917

The information in this report that relates to Exploration Results, Mineral Resources or Ore Reserves is based on information compiled by Mr Ian Moody, who is a member of the Australasian Institute of Mining and Metallurgy and a full time consultant geologist with First Principle Mineral Exploration Company Pty Ltd. Mr Moody has sufficient experience as a geologist which is relevant to the style of mineralization and the type of deposit under consideration and to the activity which he is undertaking to qualify as a Competent Person as defined in the 2004 edition of the Australasian Code of Reporting of Exploration Results, Mineral Resources and Ore Reserves. Mr Moody consents to the inclusion in this report of the matters based on his information in the form and context in which it appears.

Table 1. RC – Gold Drilling Results

<u>Hole No.</u>	<u>East</u>	<u>North</u>	<u>Azim</u>	<u>Dip</u>	<u>From (m)</u>	<u>To (m)</u>	<u>Width (m)</u>	<u>Au (g/t)</u>
DSC018	456720	6729193	090	-50	6	15	9	2.03
incl					6	9	3	5.43
DSC019	456658	6729183	089	-50	79	88	9	3.15
incl					85	87	2	8.65
EDC006	449999	6706469	220	-60	36	44	8	1.22
PINC201	473800	6671143	230	-60	48	52	4	0.81
PINC202	473842	6671040	230	-60	44	52	8	0.83
PINC204	471929	6676086	068	-60	12	16	4	1.00
PINC205	471913	6676112	074	-60	24	28	4	1.05
and					52	56	4	11.20
PINC206	471817	6676660	090	-60	20	48	28	0.30

DSC – 1 metre samples, EDC and PINC holes - 4 metre composite samples.
Assays Amdel Laboratories, Kalgoorlie – Fire Assay 0.01 ppm DL

Table 2. RC – Iron Drilling Results - Magnetite

<u>Hole No.</u>	<u>East</u>	<u>North</u>	<u>Azim</u>	<u>Dip</u>	<u>From (m)</u>	<u>To (m)</u>	<u>Width (m)</u>	<u>Fe %</u>	<u>SiO₂ %</u>	<u>Al₂O₃ %</u>	<u>P %</u>	<u>LOI</u>
MBC008	240756	6780284	271	-60	24	90*	66	38.7	40.0	0.73	0.04	3.19
MBC009	240807	6780284	271	-60	40	66*	26	39.4	41.1	0.23	0.03	1.79
MBC018	239812	6781893	248	-60	50	120*	70	35.9	43.7	1.16	0.06	0.84
MBC019	239889	6781870	255	-58	53	64	11	40.9	35.4	1.89	0.05	1.39

All assays – Ultratrace, Perth – Scheme XRF-FeOreSuite1

All samples collected at 2 metre intervals and vibro-riffle split direct from cyclone

* = End of Hole