

## **Mt. Isa – Georgina Basin Phosphate Assets Presentation**

Following the recent announcements in respect of the acquisition of the Duyfken Minerals portfolio, including the Zelma-Mount Haden Gold Assets and the Mount Isa Inlier Georgina Basin, phosphate assets, the attached presentation includes further details in respect of the phosphate assets.

### **About Luminus Systems Limited**

Luminus Systems Limited is a diversified investment company. The Company invests in a diverse range of sectors, including resources, healthcare, manufacturing, and information technology services and solutions.

### **Contacts**

Melbourne, Australia  
Sal Catalano  
+ 61 3 8614 8401

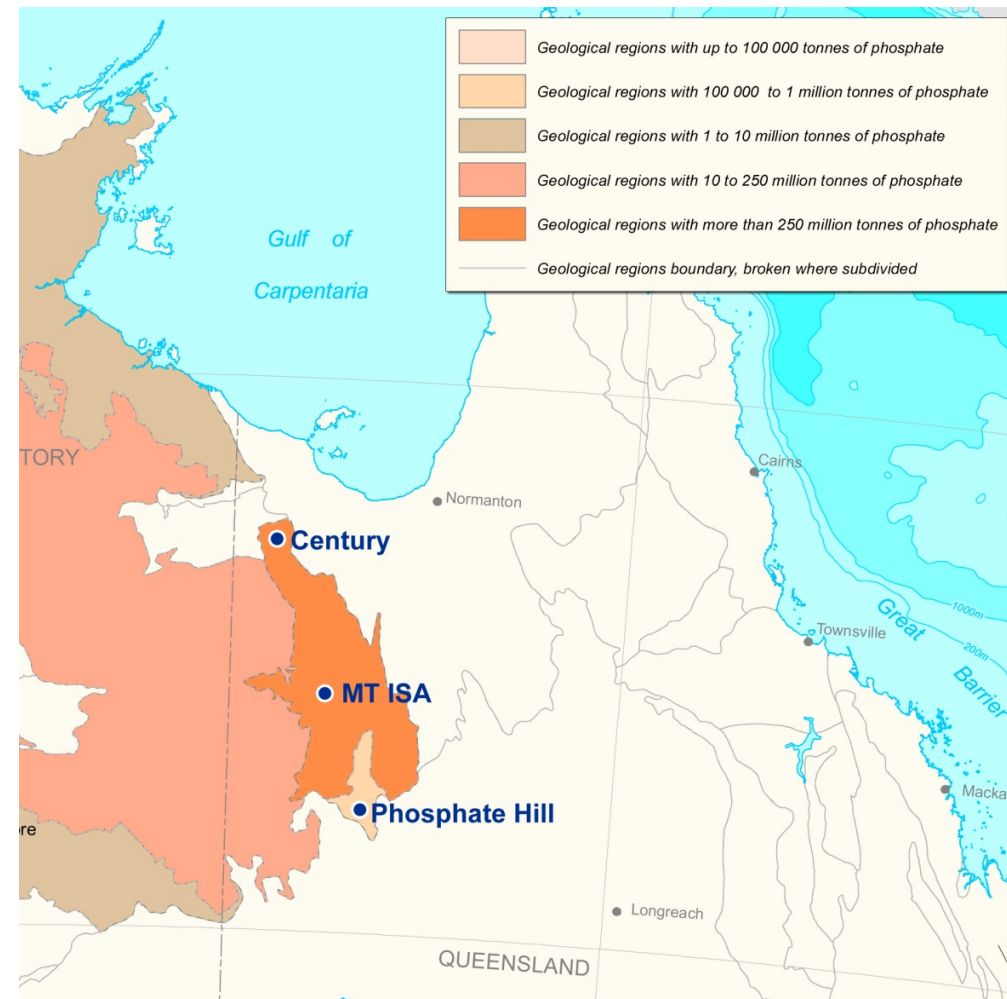
Reston, VA USA  
Gary Mueller  
+ 1 703 929 1768

**Major Phosphate Assets Portfolio  
Mt. Isa Inlier - Georgina Basin**

# Located in the Pre-eminent Phosphate Province in Australia

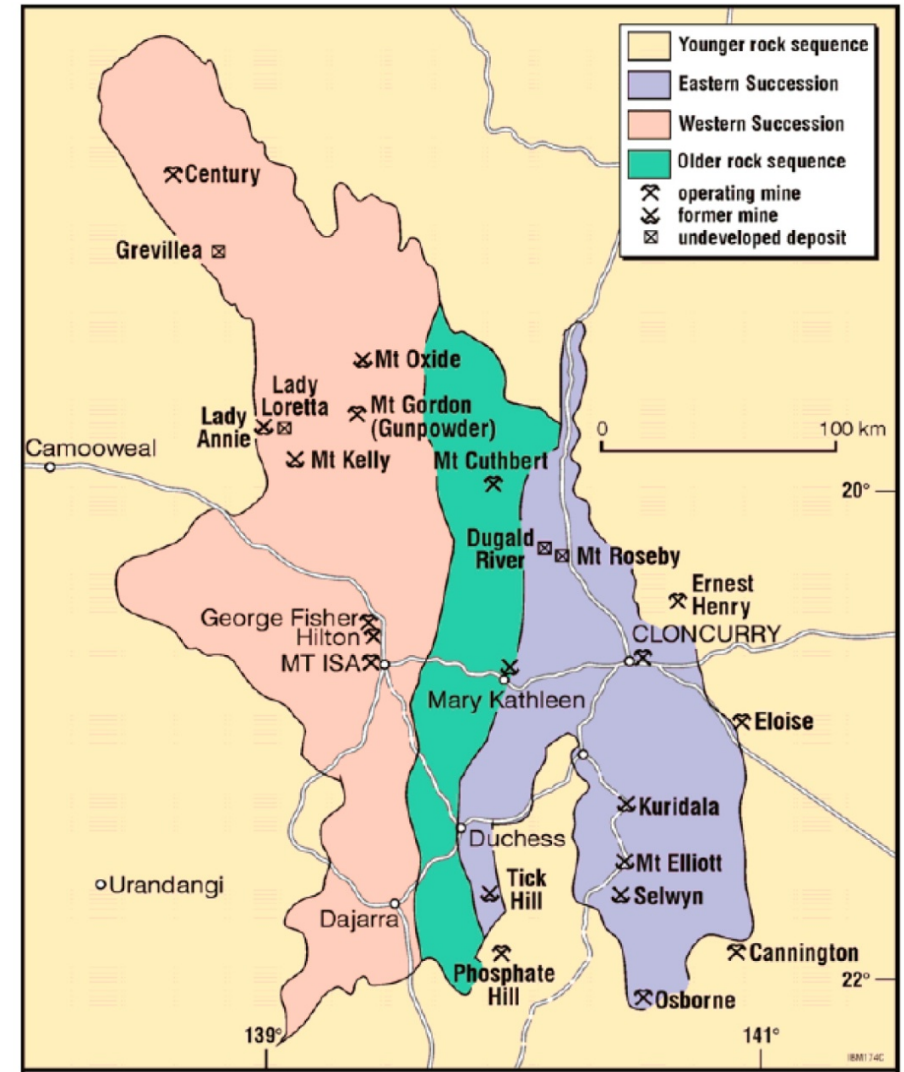
- Georgina Basin, North West QLD is a world class phosphate province.
- About 93% of Australia's demonstrated resources occur in this Basin (Geosciences Australia).
- The phosphate mineralised belt extends for over 250 km from Phosphate Hill and Duchess in the south to Thornton, D-Tree, Lady Jane/Lady Annie (Paradise North and South) and Century in the north.
- Total area of acquisition (EPMAs\*, see Appendix 1) exceeds 2,000 km<sup>2</sup> in this area.
- The EPMAs cover these very substantial extensions of known phosphate mineralisation with established access to infrastructure and logistics.

\*Exploration Permit for Minerals Application

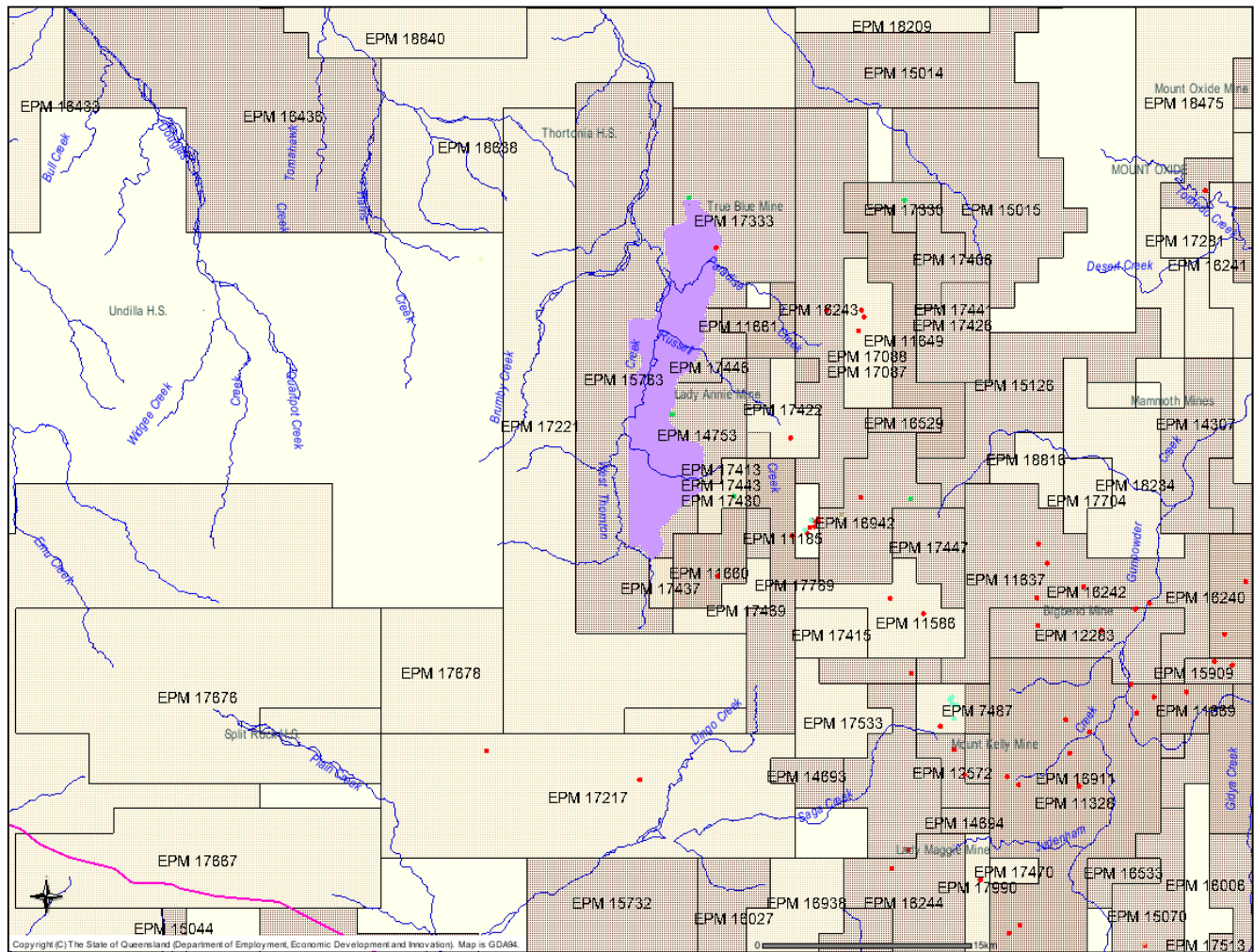


# Georgina Basin / Mt Isa Geology

- The Basin consists of a north-trending belt of Early Proterozoic basement rocks (the Kalkadoon-Leichhardt Belt) flanked by two belts of Middle Proterozoic rocks:-
  - the Eastern Succession; and
  - the Western Successions
- Most of the EPMA's are located within the highly prospective Western Succession
- The locations and acreage were selected after extensive research of available data from departmental sources as well as other geological, geophysical, aeromagnetic and radiometric studies of the area conducted by Geosciences Australia, Smart State Exploration and CSIRO.



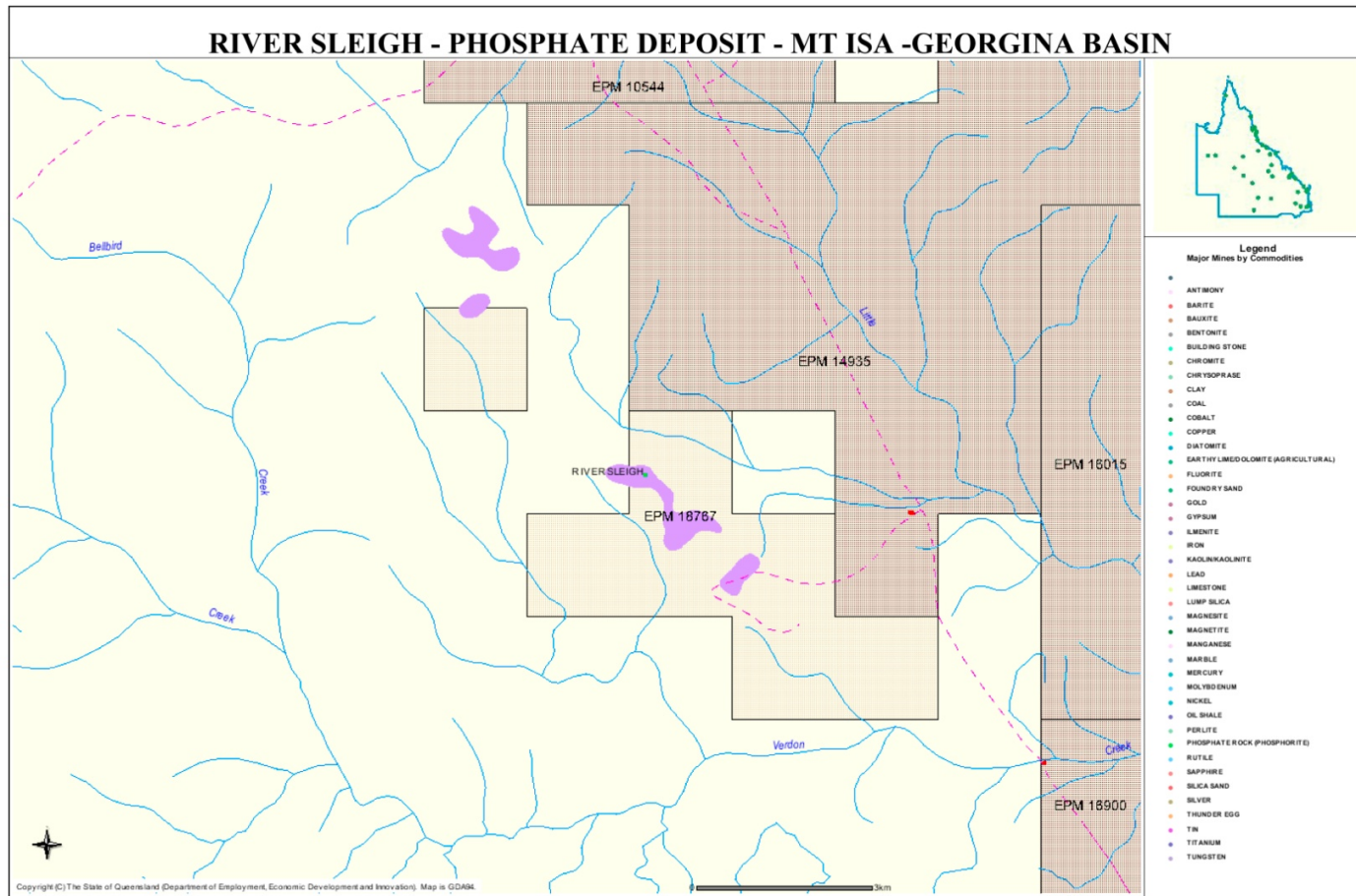
# Georgina Basin / Mt Isa Geology



**Shaded area represents Phosphate Outcropping**  
 Department of Employment, Economic Development and Innovation, QLD 2009-2010.

- Outline of significant phosphate outcropping based on historical data.
- A number of the EPMAs are adjacent to or surround this outcropping (including EPMAs 17221, 17217, EPMAs 17413)

# Georgina Basin / Mt Isa Geology

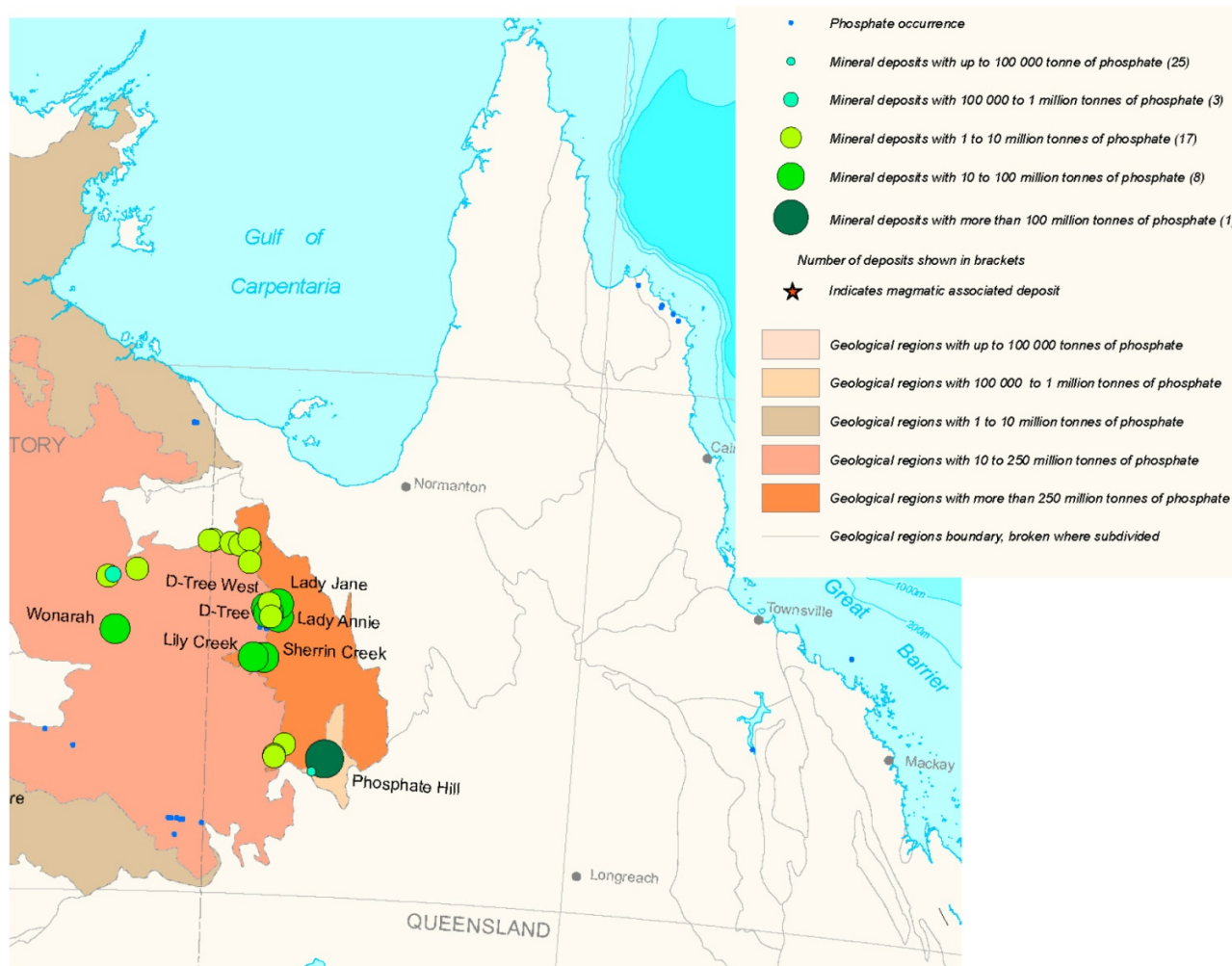


- Significant phosphate outcropping also prevalent on EPMA 18767

**Shaded area represents Phosphate Outcropping**  
Department of Employment, Economic Development and Innovation, QLD 2009-2010.

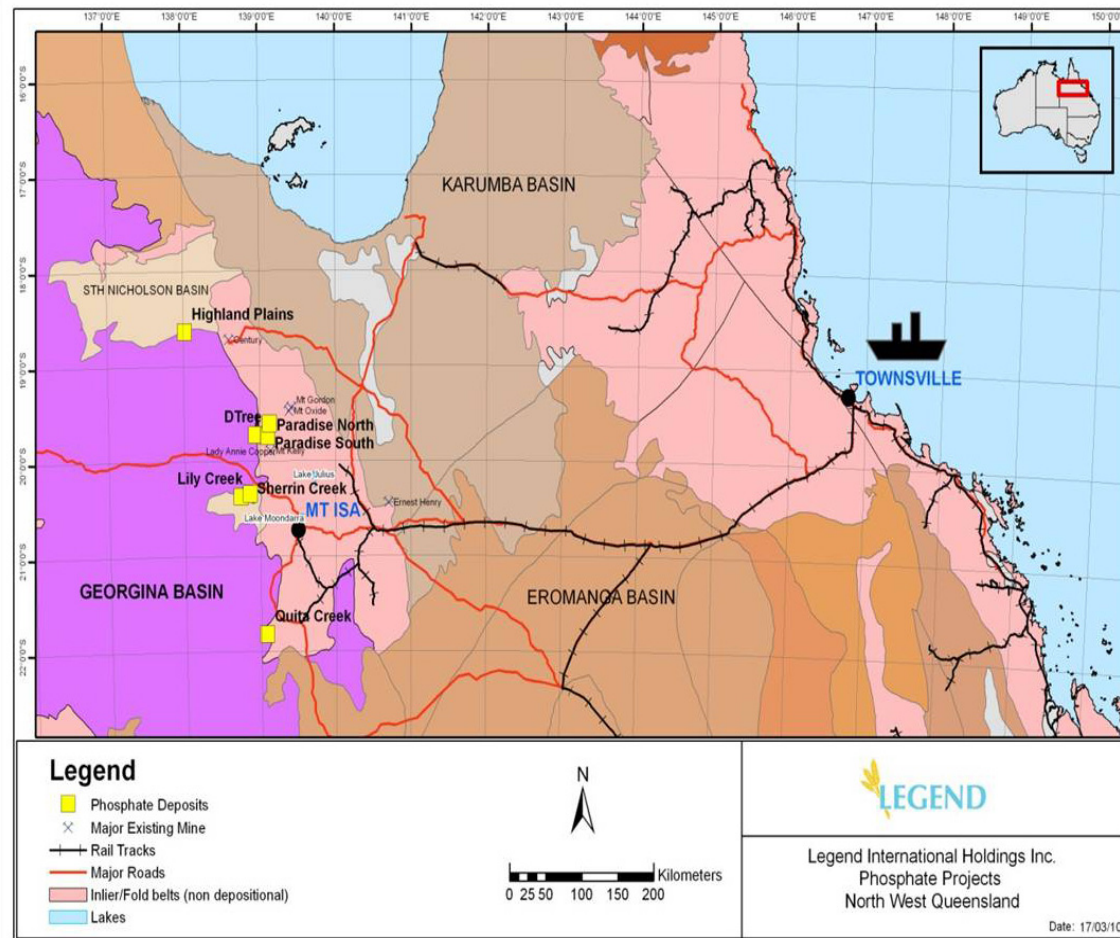
# Surrounded by Existing Mines and Major Development Projects

- Australia's major mainland commercial resource of phosphate is located at Phosphate Hill, 140 km south east of Mount Isa.
- World-class rock phosphate resource is close to the surface and should be easy to access and mine.
- Rock ideal for the manufacture of high analysis mono-ammonium phosphate (MAP) and di-ammonium phosphate (DAP) fertilisers for domestic and international use.



# Surrounded by Existing Mines and Major Development Projects

- EPMA's within the portfolio lie adjacent to the south and west of the large holdings of Legend International Holdings Inc. (LGDI:OTC) (lgdi.net/) including:
  - Lady Annie/LadyJane deposit (Paradise Nth, Sth). Previously the subject of a positive technical and economic feasibility study conducted by Broken Hill South Limited. Recent positive feasibility study concluded by LGDI's Chinese partner Wengfu Group and confirmed base case project revenues of USD11 billion over a 30 year mine life and a pre tax IRR of 25.5%
  - The D-Tree deposit (located 12km west of Lady Annie/Lady Jane). Also the subject of a previous positive technical and economic feasibility study conducted by International Minerals and Chemical Development Corporation

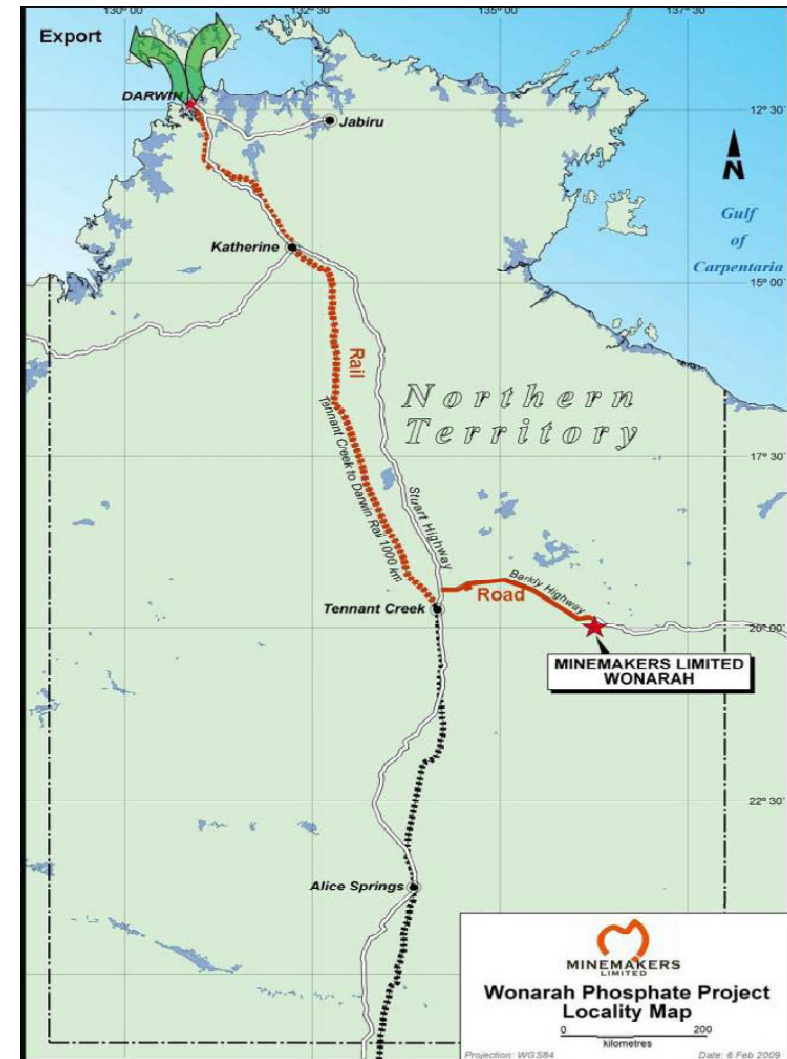


Source: Legend International Holdings Inc.



# Surrounded by Existing Mines and Major Development Projects

- EPMA's within the portfolio lie to the south and east of Minemakers Limited (ASX: MAK) Wonarah rock phosphate project in the Northern Territory, (minemakers.com.au). Details for the MAK resource are:
  - The current JORC Inferred Resource stands at 1,258Mt @ 12% P<sub>2</sub>O<sub>5</sub>, the largest JORC Compliant rock phosphate deposit in Australia
  - Permitting for mine start up scheduled for completion by 2010
  - Granted Major Project Status by the Northern Territory Government



Source: Minemakers Limited.

# Future Plans – Defining Large Tonnages Within Existing Substantial Mineralisation

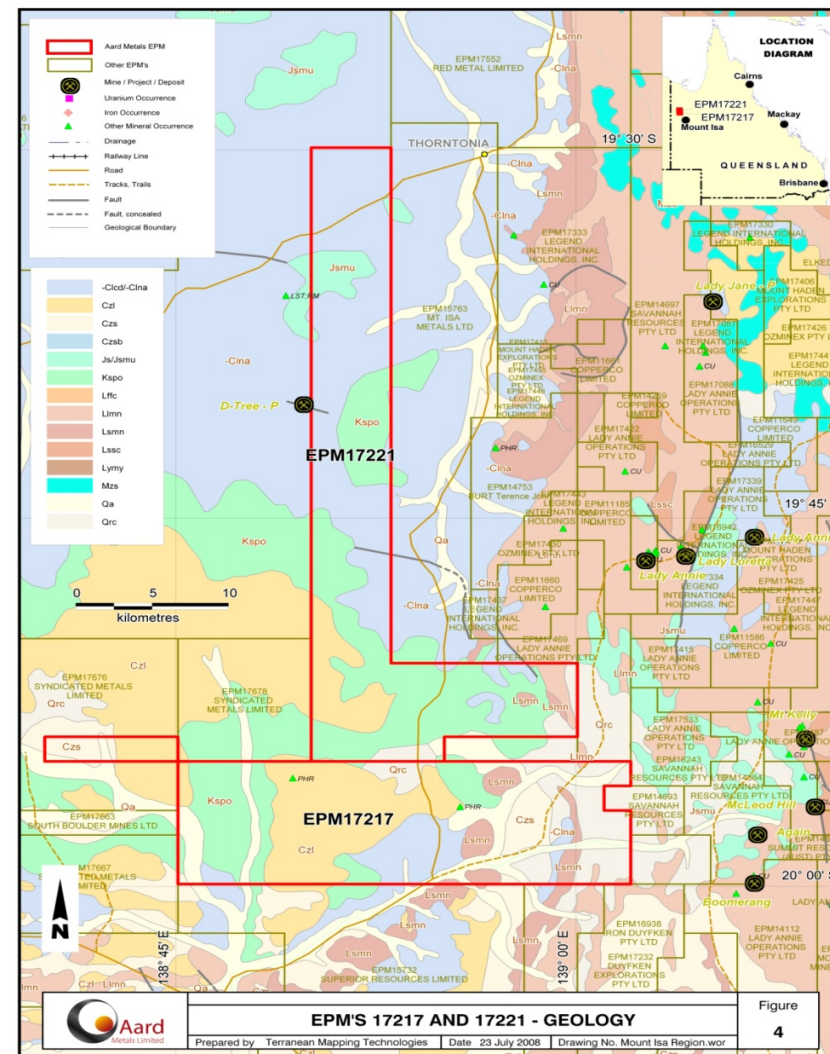
- Luminus will undertake a detailed review of the available data prior to finalising its strategy and future plans
- A key part of the future plans will be defining very large tonnages of high grade phosphate across substantial mineralisation within the portfolio including:-

## EPMA 17217 (Granted)

- Large holding hosts two known phosphate deposits (Broken Hill South Limited, Tyler J.M, 1968)

## EPMA 17221 (Native Title Agreement Pending)

- Large holding that flanks the eastern boundary of Legend Mining International's D-Tree deposit



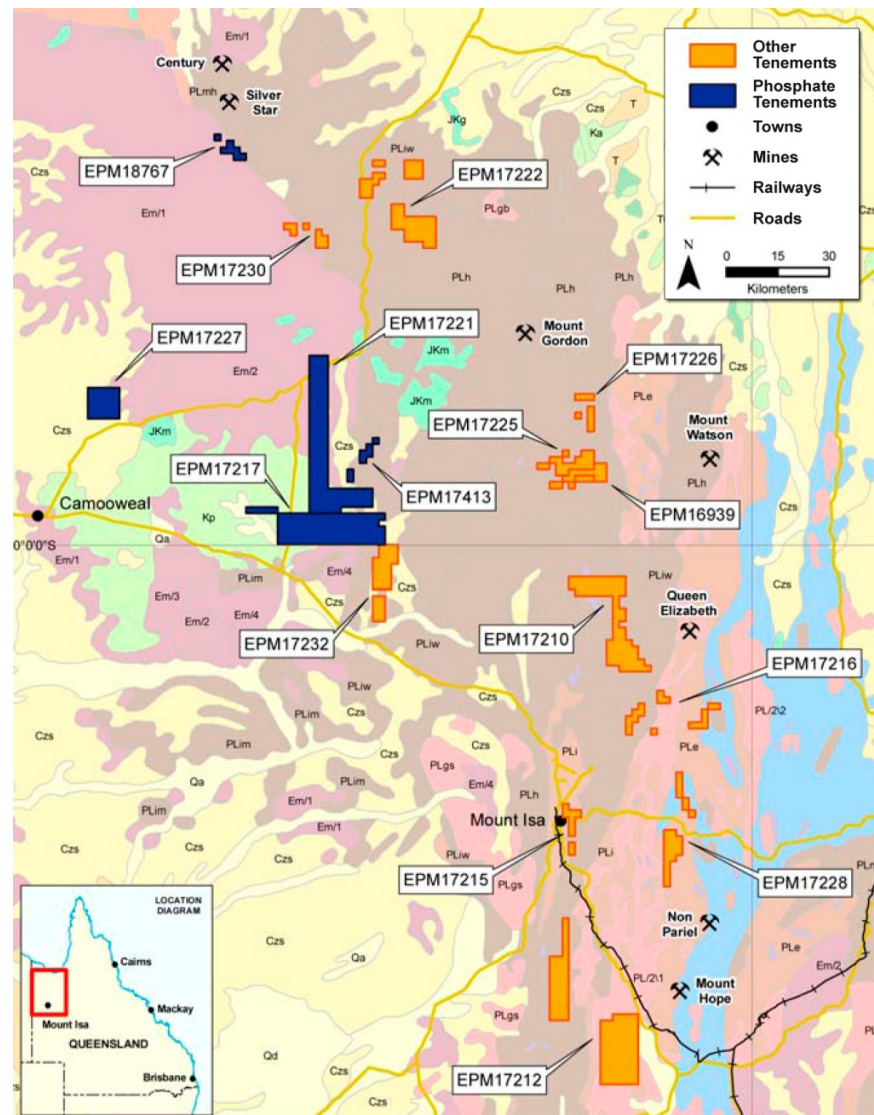
# Future Plans – Defining Large Tonnages Within Existing Substantial Mineralisation

## EPMA18767

- Substantial sediment-hosted upwelling type phosphate deposit delineated by Riversleigh in 1986 with an indicated resource, non JORC compliant, of 11.4Mt @ 14.4% P2O5

## EPMA 17413 (subject to competing application)

- Substantial phosphate and phosphorite mineral occurrences containing up to 200 million tonnes (MIM Holdings, Shell Billiton, BHP Minerals)



# Appendix 1

## Summary of EPMs and Current Status

Type	Number	Sub Blocks	Status
EPMA	17214	86	Native Title Agreement Pending
EPMA	17222	50	Native Title Agreement Pending
EPMA	17230	9	Native Title Agreement Pending
EPMA	17234	72	Native Title Agreement Pending
EPMA	16939	12	Native Title Agreement Pending
<b>EPMA</b>	<b>17210</b>	<b>62</b>	<b>Granted</b>
<b>EPMA</b>	<b>17212</b>	<b>100</b>	<b>Granted</b>
<b>EPMA</b>	<b>17215</b>	<b>9</b>	<b>Granted</b>
EPMA	17216	18	Native Title Agreement Pending
<b>EPMA</b>	<b>17225</b>	<b>24</b>	<b>Granted</b>
EPMA	17226	8	Native Title Agreement Pending
EPMA	17228	24	To be advertised
EPMA	17232	30	To be advertised
EPMA	17413	65	Competing application
EPMA	17160	50	Competing application
<b>EPMA</b>	<b>17217</b>	<b>89</b>	<b>Granted</b>
EPMA	17221	98	Native Title Agreement Pending
EPMA	17227	25	To be advertised
EPMA	18767	7	To be advertised