



14 April 2010

Companies Announcements Office
Australian Securities Exchange Limited
10th Floor, 20 Bond Street
SYDNEY NSW 2000

Dear Sir/Madam

Advent Energy Presentation
Offshore Australasia Conference, 14 April 2010

MEC Resources Ltd (ASX: MMR) advises that its investee entity Advent Energy Ltd is presenting today at the Offshore Australasia Conference, Perth.

A copy of the presentation is attached.

Yours faithfully,

A handwritten signature in black ink, appearing to read 'D. Breeze'.

David Breeze
Executive Director
MEC Resources Ltd
PO Box 317
North Perth WA 6906
Tel: +61 8 9328 8477

Media Enquiries:
Bill Kemmery
Fortbridge Consulting
Tel: +61 2 9331 0655
Mobile: +61 400 122 449

Notes:

In accordance with ASX listing requirements, the geological information supplied in this report has been based on information provided by geologists who have had in excess of five years experience in their field of activity.

MEC is an exploration investment company and relies on the resource and ore reserve statements compiled by the companies in which it invests. All Mineral Resource and Reserve Statements have been previously published by the companies concerned. Summary data has been used. Please refer to relevant ASX releases for details and attribution. Unless otherwise stated all resource and reserve reporting complies with the relevant standards.

MEC Resources Ltd
ACN 113 900 020
PO Box 317, North Perth, WA 6906
14 View Street, North Perth 6006, Western Australia
T: +61 8 9328 8477 F: +61 8 9328 8733
info@mecresources.com.au www.mecresources.com.au



ADVENT ENERGY LIMITED

2010 Australasia Offshore Conference

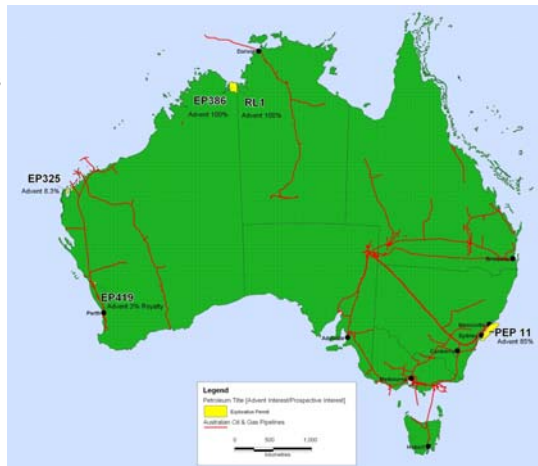
“A Potential New Australian LNG Project”

Perth, 13-15 April 2010

Investment Highlights



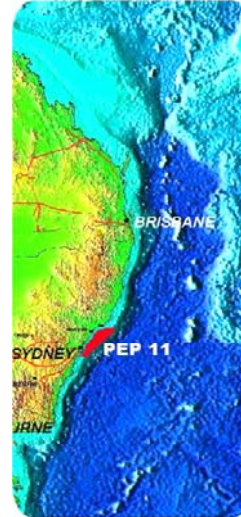
- Cornerstone project – offshore Sydney Basin / Petroleum Exploration Permit (PEP) 11
 - Permit potential of 16.3 Tcf recoverable plus liquids
 - 8,250 km² undrilled highly prospective area adjacent (<50km) to Australia’s largest market and massive infrastructure
 - Earning 85%
- Proven management team
 - Former leadership positions in major O&G companies and oilfields
 - Wealth of finance and corporate structuring experience
- Portfolio of onshore and offshore permits with near-term production potential
 - Near term production projects in producing basins
 - Multitude of highly prospective play types and leads for future exploration upside
- Drilling anticipated 3rd Q 2010
 - Taking advantage of significant reduction in rig rates / unused rig slots



Offshore Sydney Basin : PEP11 Opportunity



- **NSW/PEP 11 covers 8250 sq km, 20 km from Australia's largest energy market, excellent infrastructure**
- **Permit Prospective Recoverable Resources estimated at up to 16.3 Tcf; mean = 7.5 Tcf**
- **Excellent analogies with world class producing fields**
- **Active thermogenic hydrocarbon system demonstrated offshore**
- **Possible gas/condensate-charged Permian + Triassic reservoirs / excellent potential for gas & oil discovery**
- **Prospective resources and proximity to infrastructure infer potential for LNG**
- **Advent – right to earn 85%; JV partner Bounty Oil & Gas reducing from 75% to 15%**
- **Robust Economics**
- **Advanced negotiations for rig, environmental approvals and drilling engineering design nearing completion**



Australian East Coast Proposed LNG Production



LNG:

- Shell/PetroChina bids \$3.3+ billion for Arrow Energy
- Woodside's Pluto Project 1st Train provides for project valuation of \$12 billion
- Ichthys Project – 12.8 Tcf: 850km+ pipeline to Darwin, 40 year life span, \$20 billion capex
- Gorgon Project (Chevron): 3 x 5 Mtpa trains, \$50 billion project

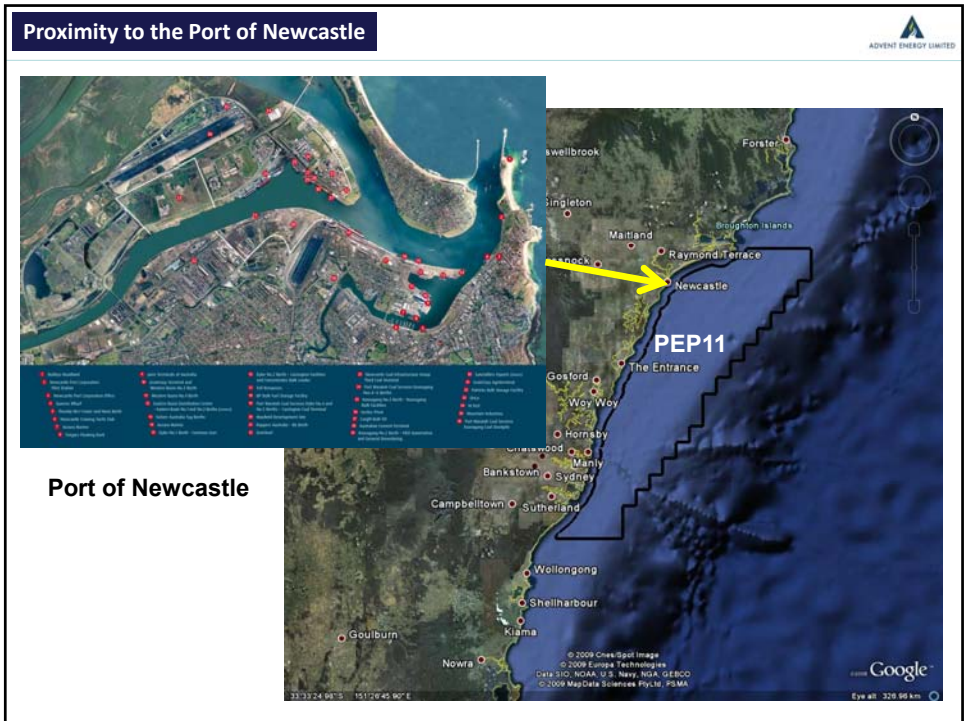
FLNG:

- Shell - Prelude FLNG: Development costs >US\$5 billion. 3.6 Mtpa LNG, 1.3 Mtpa condensate, + 400,000 tpa LPG per year for 25 years from 2016

Potential Benefits of FLNG:

- Substantially smaller environmental footprint than a land-based LNG processing plant.
- Possibly 20% less greenhouse gas emissions than an equivalent onshore installation

1 million tonnes per annum LNG requires approximately 0.06 Tcf of natural gas

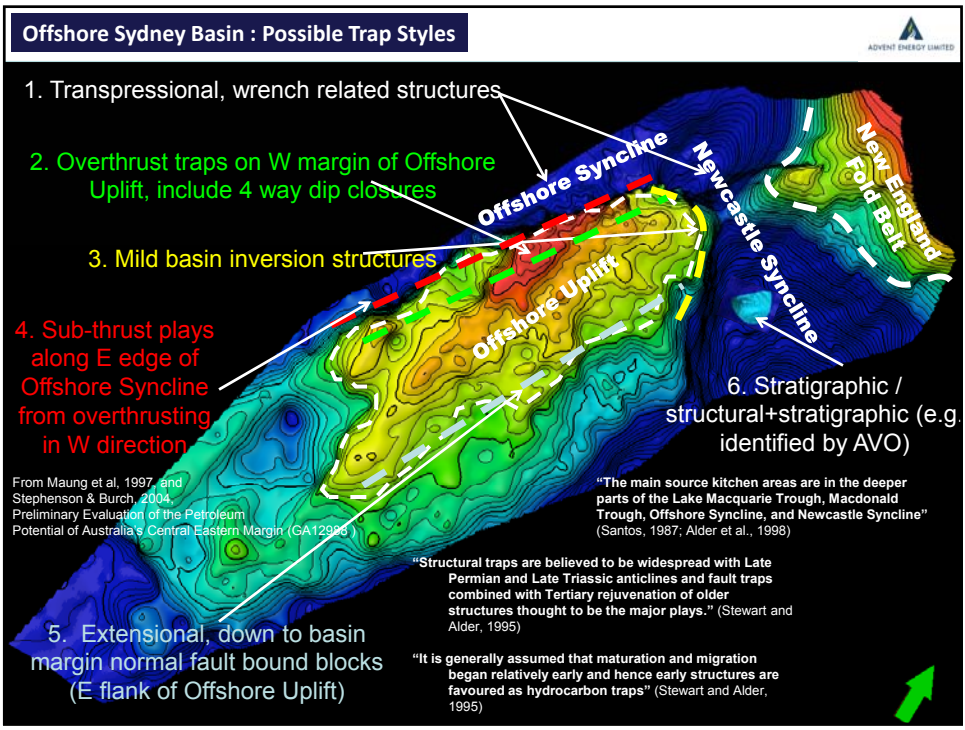
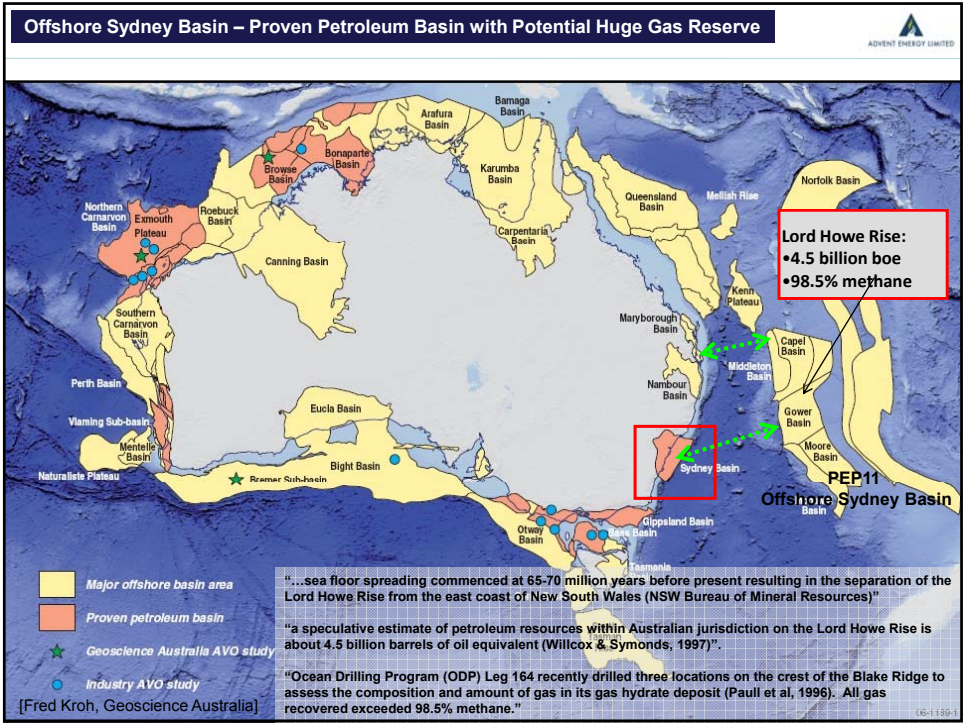


Australian LNG

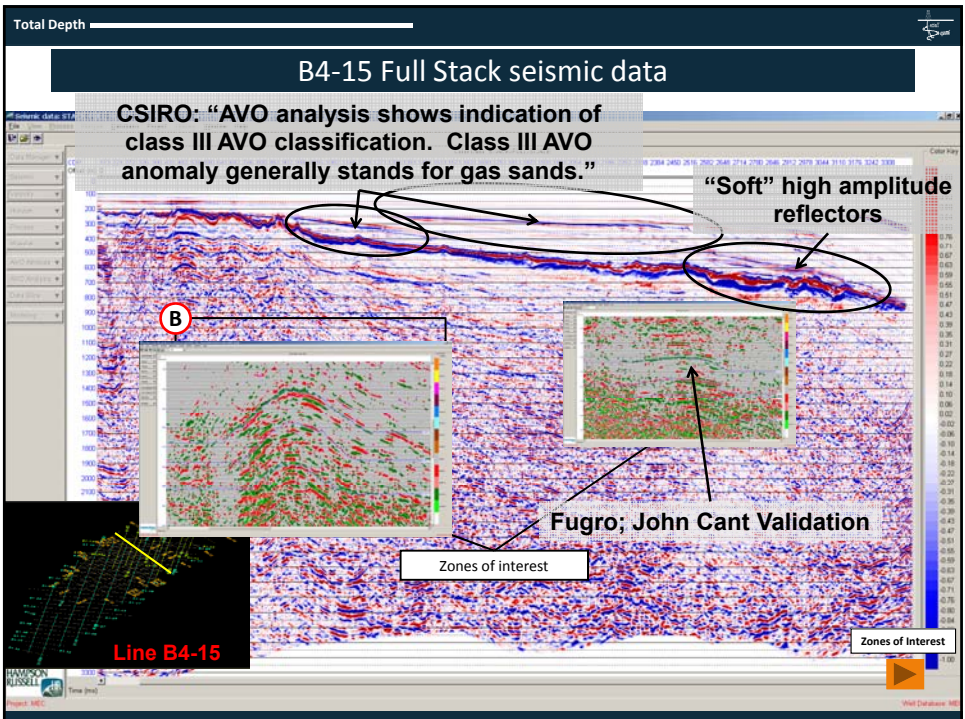
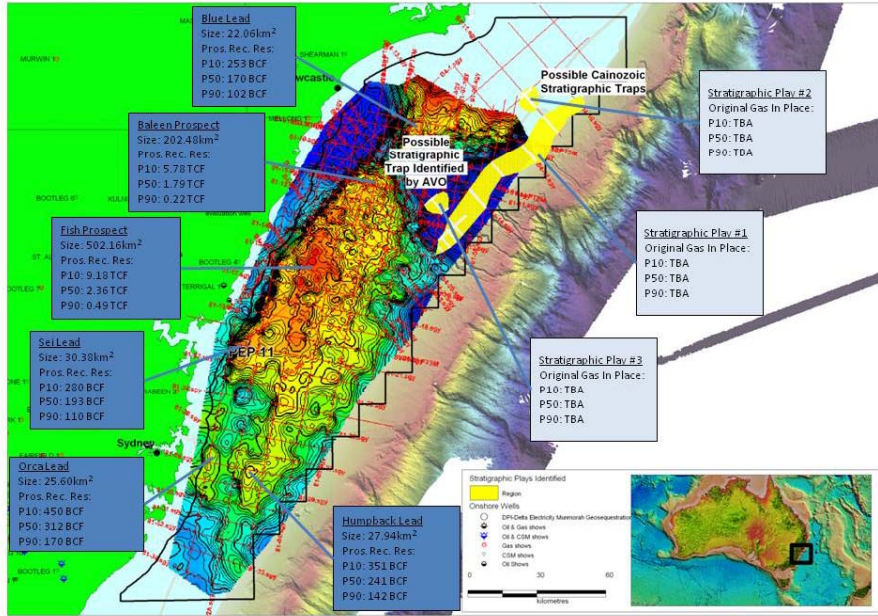
Operator	Project	Size	Production / Sales	\$Export Value per year (ABARE 2008 data)	Life
Woodside	Pluto	4.1 Tcf (+ 0.5 Tcf Xena)	3.25-3.75 Mtpa LNG	\$2.03 billion	15 years (+5 yr option)
Inpex	Ichthys	12.1 Tcf	8 Mtpa LNG 1.6 Mtpa LPG + condensate	\$4.4 billion (LNG only)	40 years
Chevron	Gorgon	40 Tcf	3 x 5 Mtpa trains	\$8.25 billion	60 years
Shell	Prelude	~5.4 Tcf +	3.6 Mtpa FLNG 1.3 Mtpa Cond. 400 ktpa LPG	\$1.98 billion (LNG only)	25 years
Advent	PEP11	Up to 16.3 Tcf*			

* Prospective exploration target only - yet to be discovered

ADVENT ENERGY LIMITED



Offshore Sydney Basin – A Proven Petroleum Basin With Potential Huge Gas Reserve – Prospective Recoverable Resources of 16.3 Tcf (P10) estimated for the Permit.



DHI have been initially observed on seismic line B4-15 along the main structural trend and are adjacent to the previously identified Baleen Prospect. The features are typically prime indicators for the occurrence of hydrocarbons

Confirms the existence of three core seismic attribute analyses (e.g. multiple collaborative measurements) in the deeper part of the PEP11 seismic section

- high amplitude bright spot reflections
- attenuation of high frequencies in instantaneous frequency plots
- bright spot features in Root Mean Squared amplitude plots

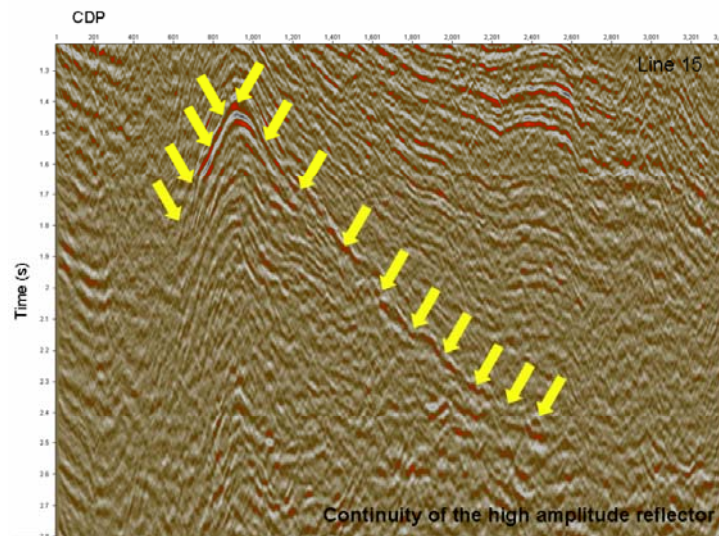
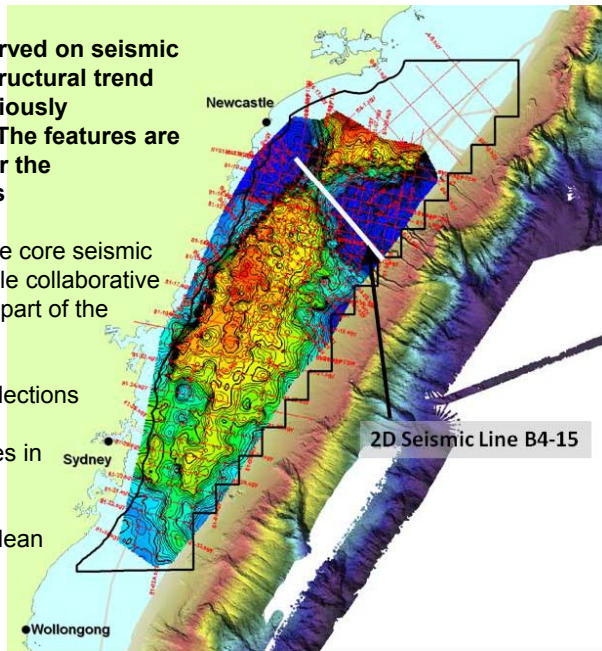


Figure 69: Display of Line B4-15. The continuity of high amplitude reflector has been mapped.

“Strong energy reflections present on seismic section can be associated with major lithologic changes as well as hydrocarbon accumulations.”

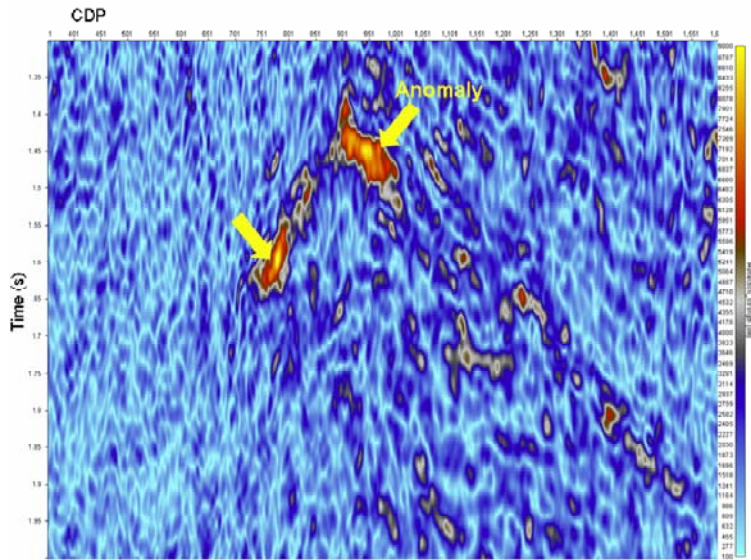


Figure 70: Reflection Strength plot of the high amplitude reflector

“Gas reservoirs, in particular, appear as high amplitude “bright spot” reflections.”

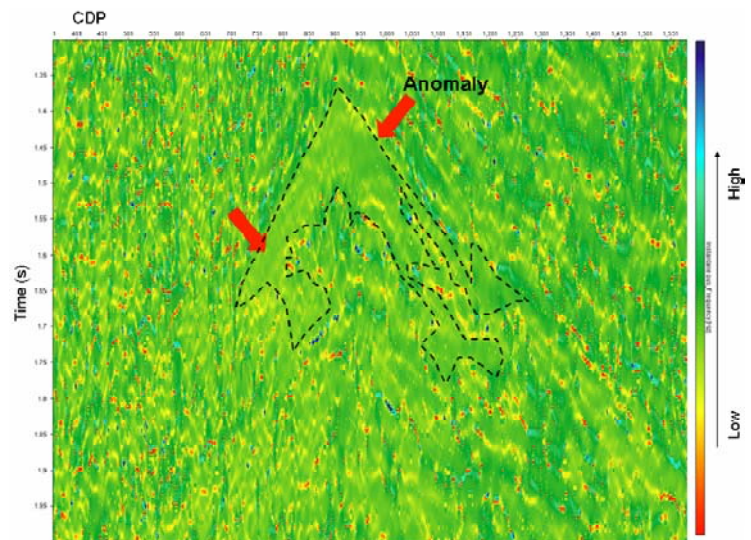


Figure 72: Instantaneous frequency plot for the high amplitude reflector. It is showing low frequency anomaly.

“Instantaneous frequency content is of interest in that high frequencies are attenuated by gas and condensate reservoirs.”

Offshore Sydney Basin – Direct Hydrocarbon Indicators

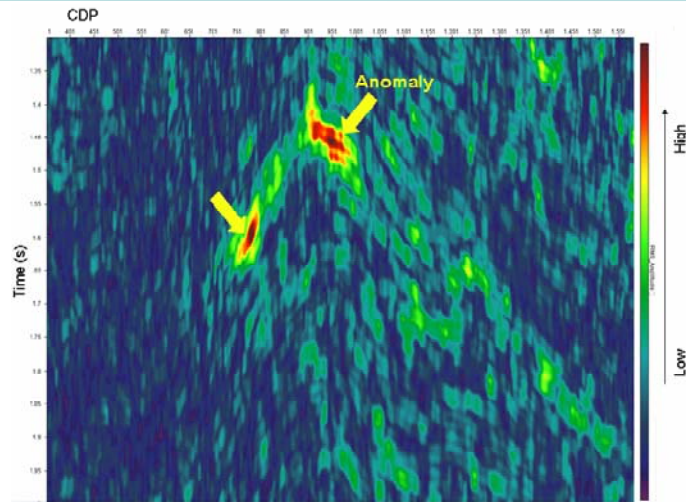
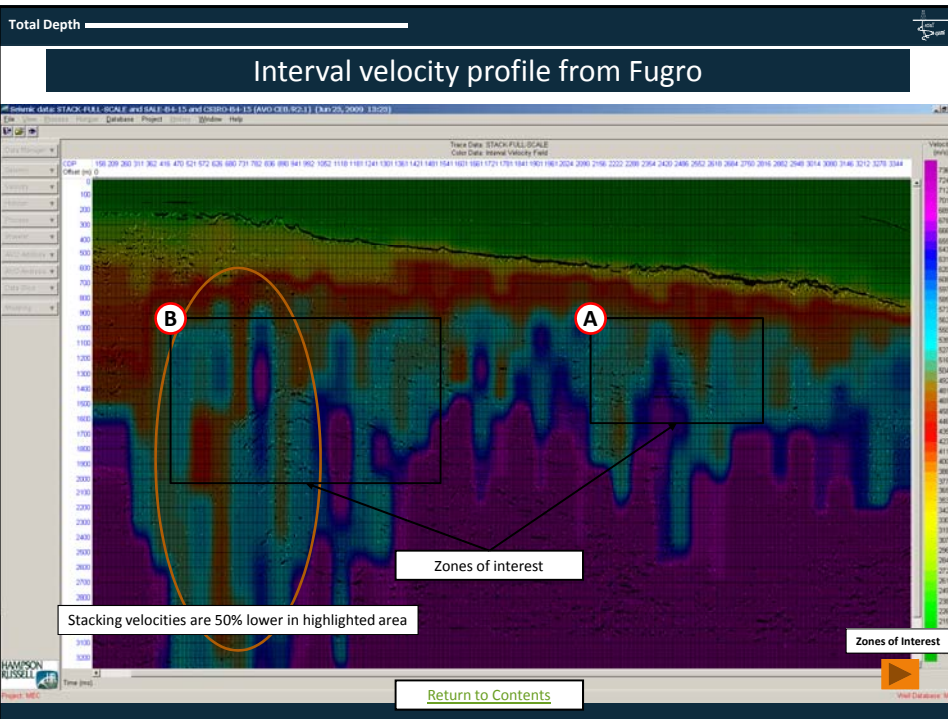
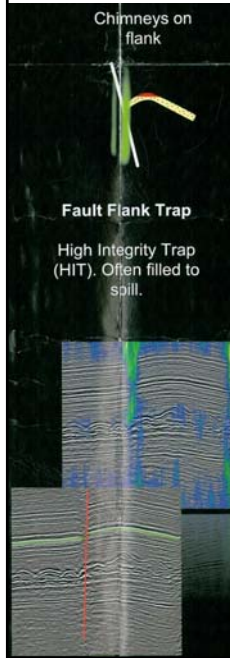


Figure 74: RMS of seismic amplitude over the area of Line B4-15, where high amplitude reflector is mapped.

“The Root Mean Square (RMS) amplitude ... may be used to map direct hydrocarbon indicators in a zone.”

“The RMS of seismic amplitude for the 700ms window have been calculated. This indicates a bright spot like feature, which is a prime indicator for the occurrence of gas.”





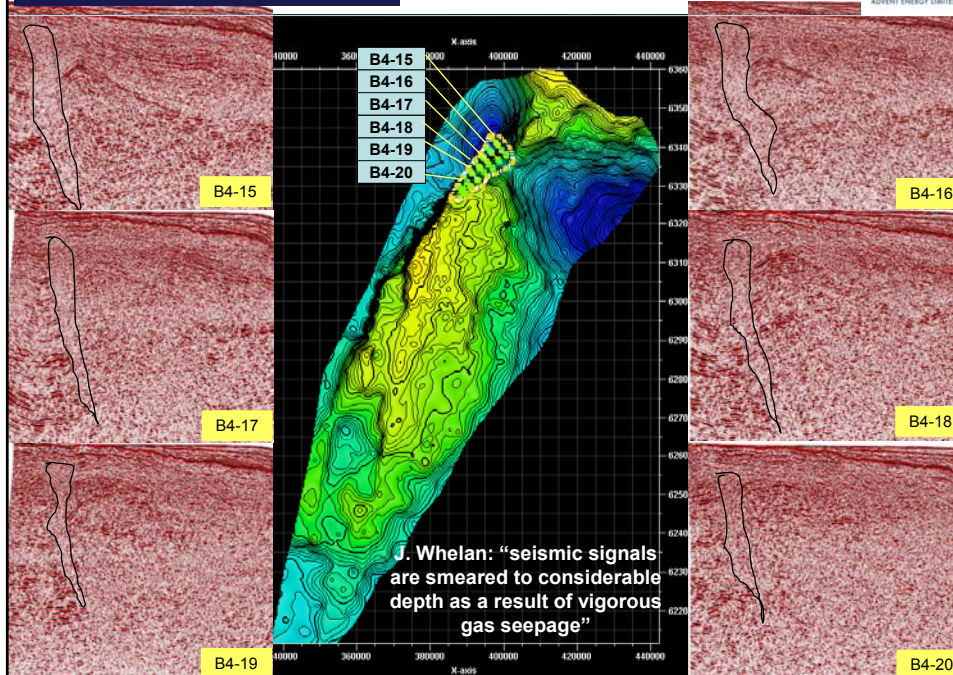
Assess HC Charge and Vertical Seal Risk



Trap Type	Non-fault Seal Trap (HIT)	Fault Seal Trap (HIT)	Fault Leak Trap (MIT-LIT)	Non-chimney Trap
Chimney Character	No chimney over structure	Fault related: With vertical seal; Poss Lateral leak	Fault related: venting to shallow reservoirs or surface	Chimney has no clear link to trap
Mechanism	Vertical fracturing & lateral flow	Fracturing	Fracturing / Sediment Flow	Lateral / Uncertain
Geologic Discoveries	94% N=18	93% N=30	27% N=19	57% N=14
Necessary Supporting Technologies	Basin modeling to understand timing	SGR for possible lateral fault leak, Basin Modeling to understand timing	Fault strain analysis, Basin Modeling to understand timing	

Source: dGB Earth Sciences

PEP11: Distribution of Gas Chimneys



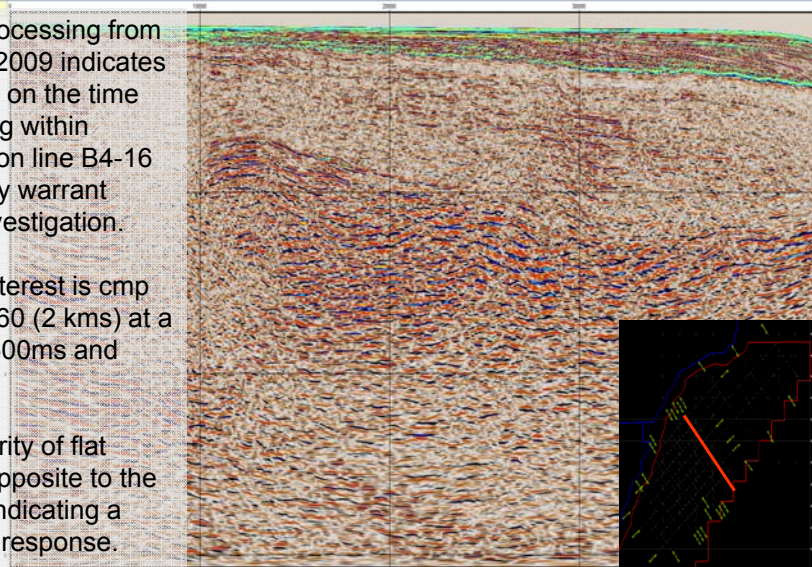
B4-16 Preliminary Final PSTM (Zoom)



Data reprocessing from phase 2, 2009 indicates a flat spot on the time processing within structure on line B4-16 which may warrant further investigation.

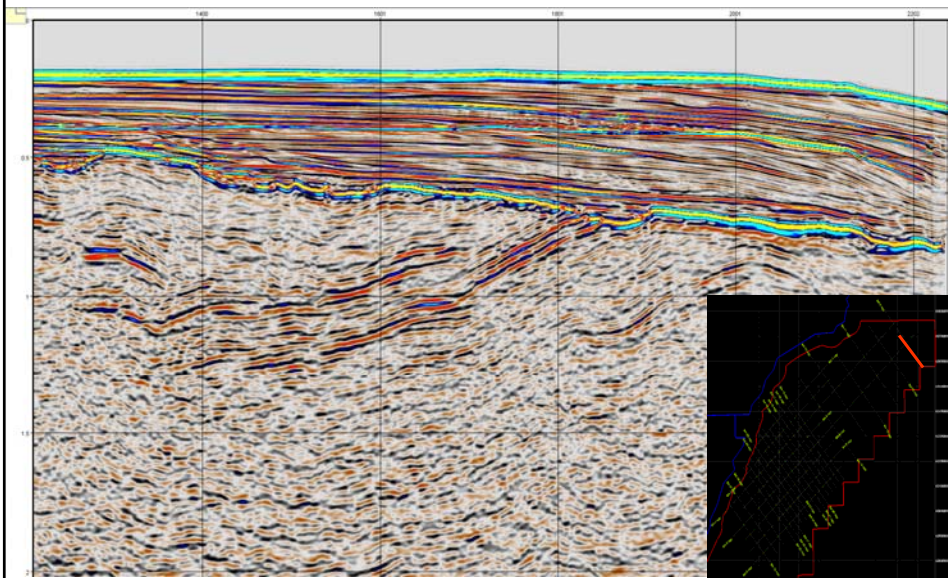
Area of interest is cmp 900 to 1060 (2 kms) at a time of 1500ms and 1700ms.

Note polarity of flat spots is opposite to the seafloor indicating a likely soft response.

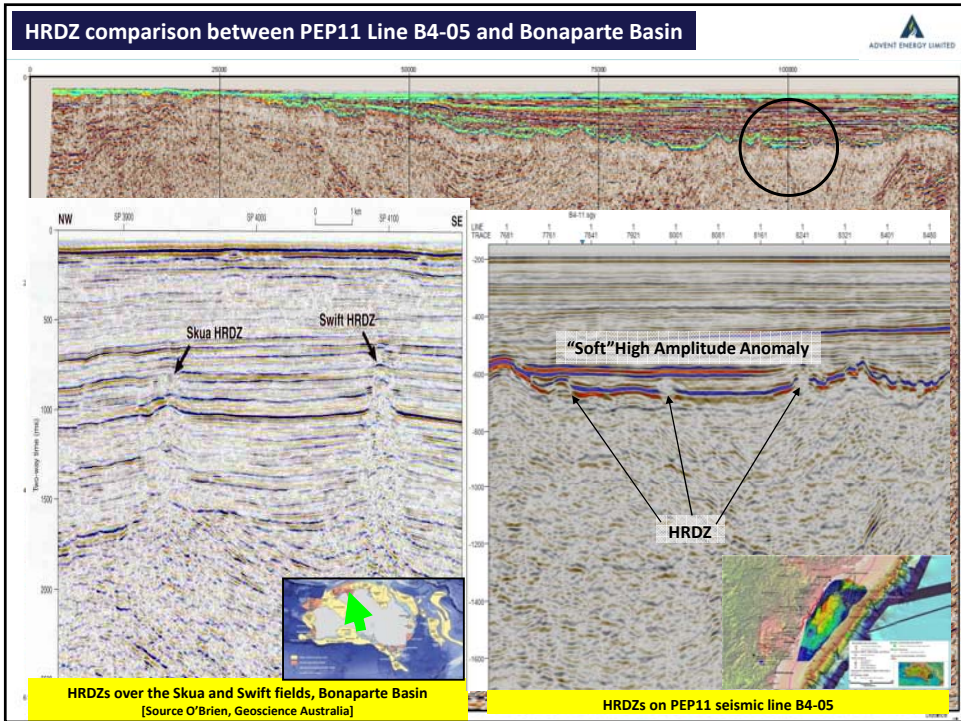
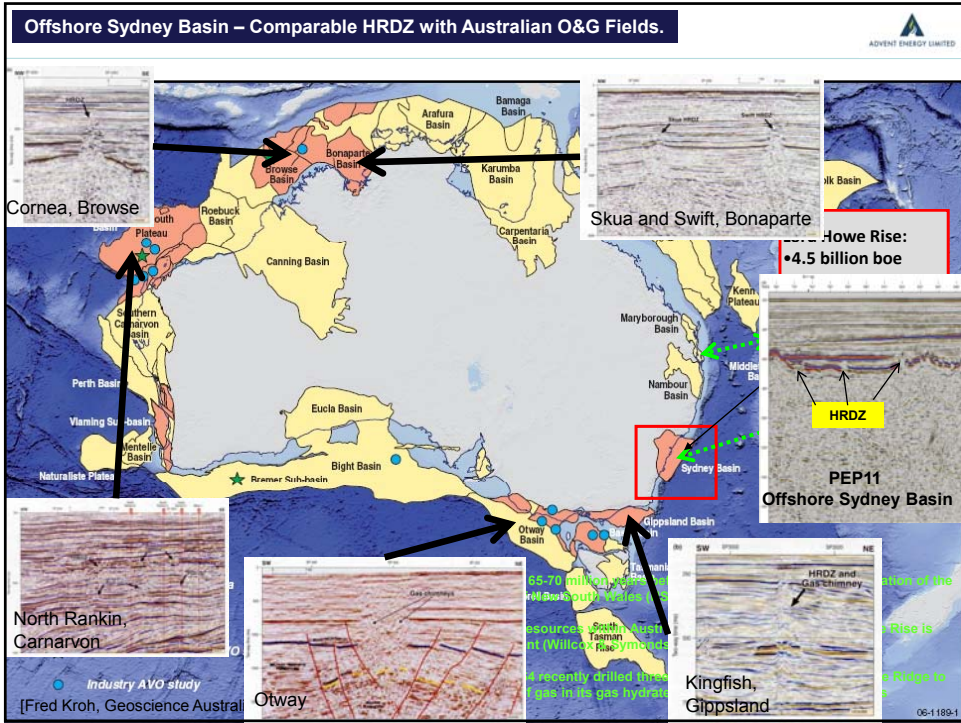


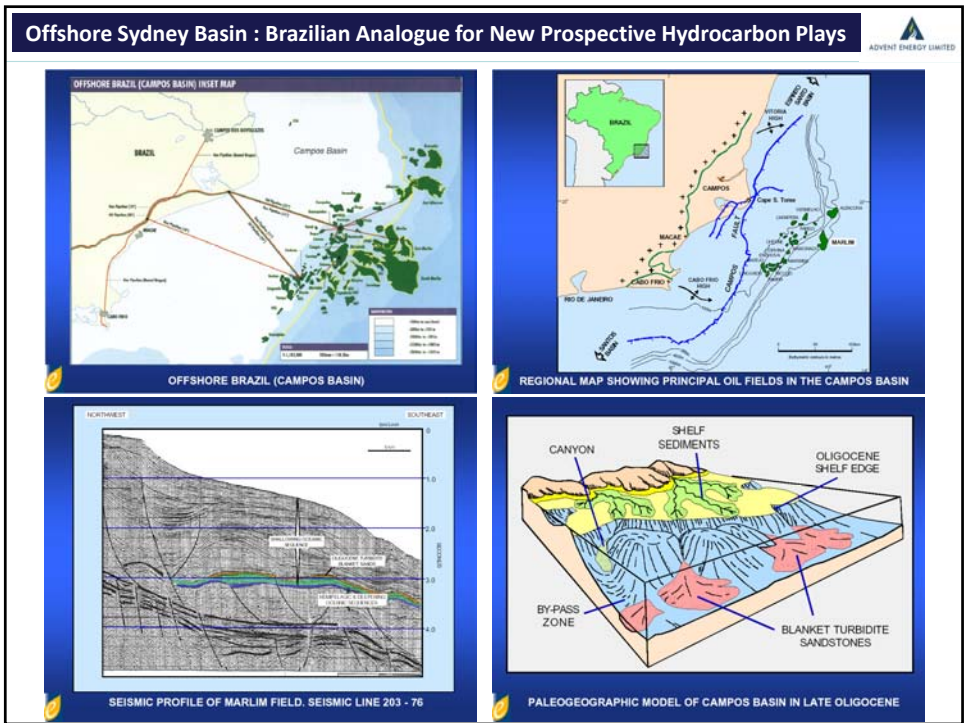
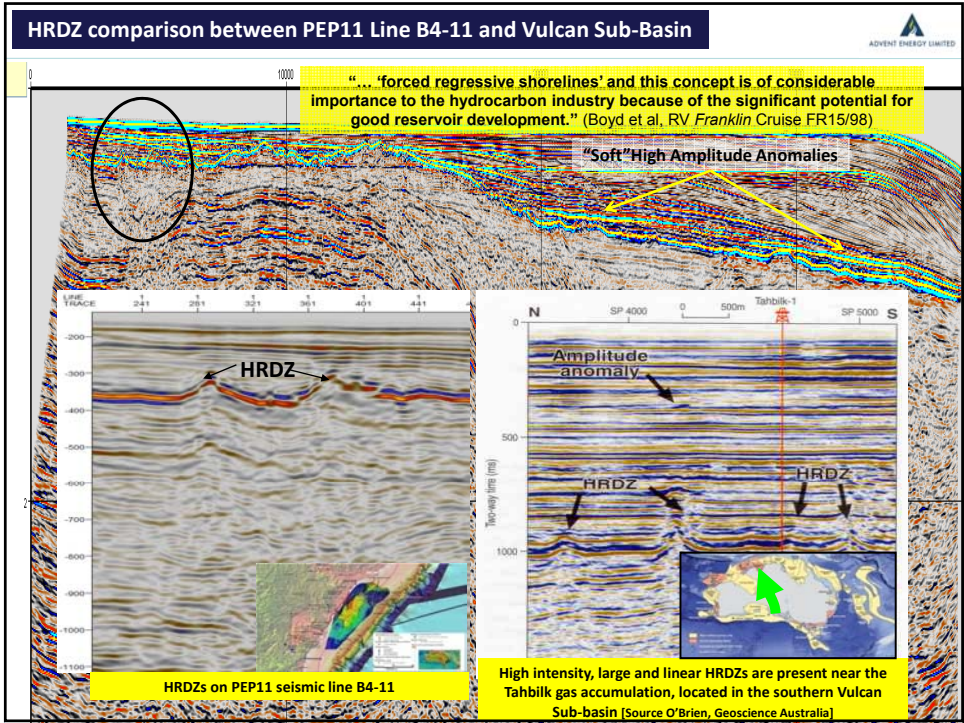
www.fugro.com

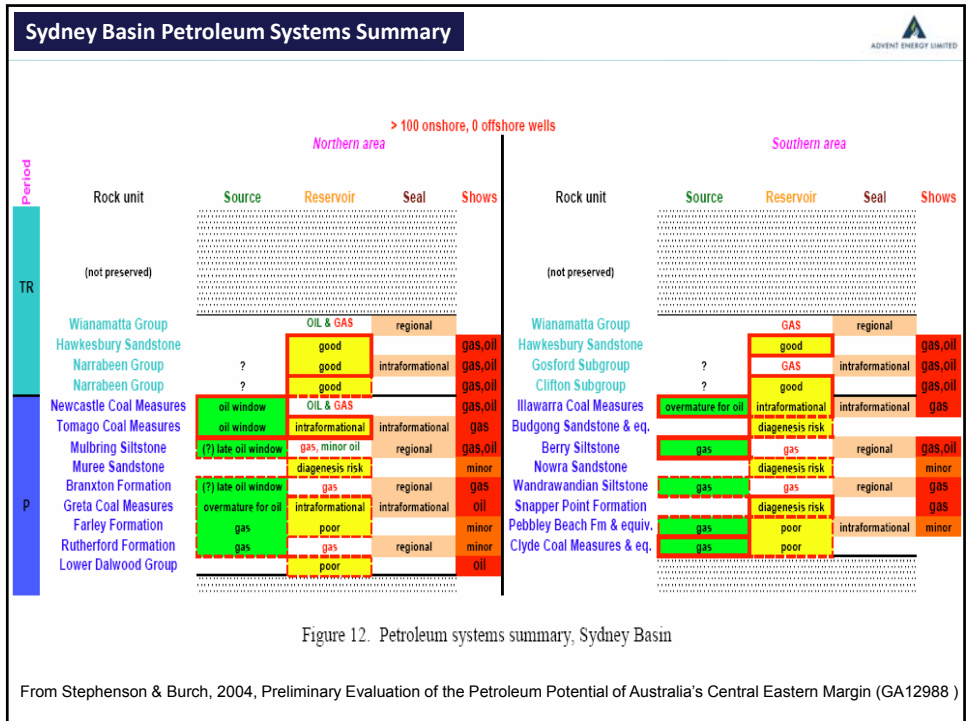
B4-09a Final PSTM (Zoom)



www.fugro.com

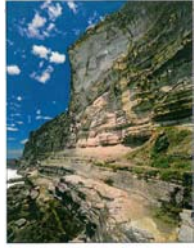






Offshore Sydney Basin : Reservoir

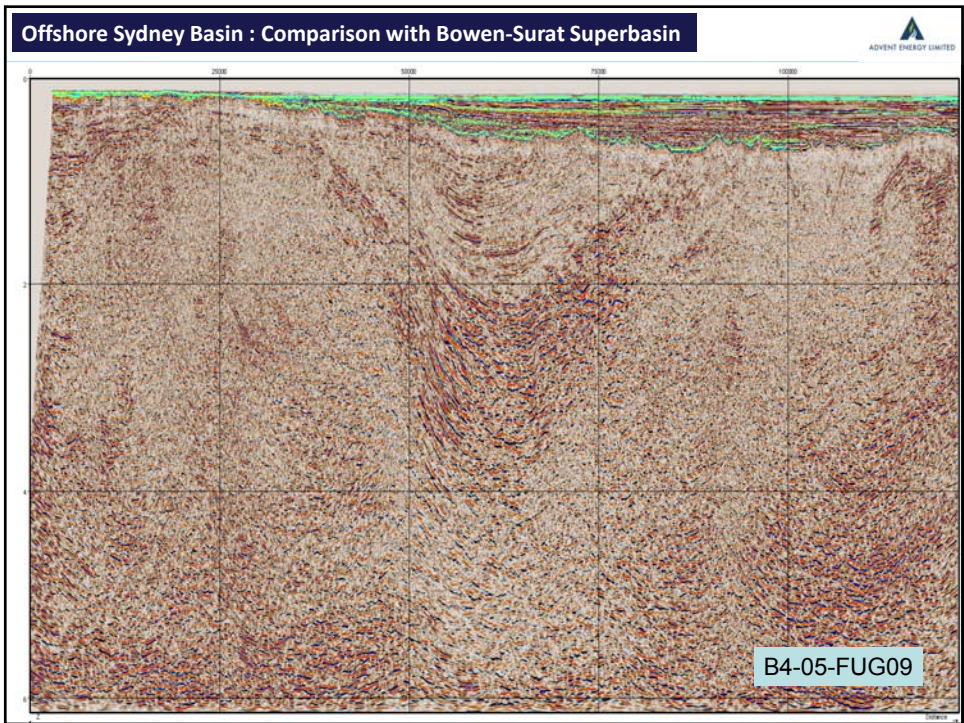
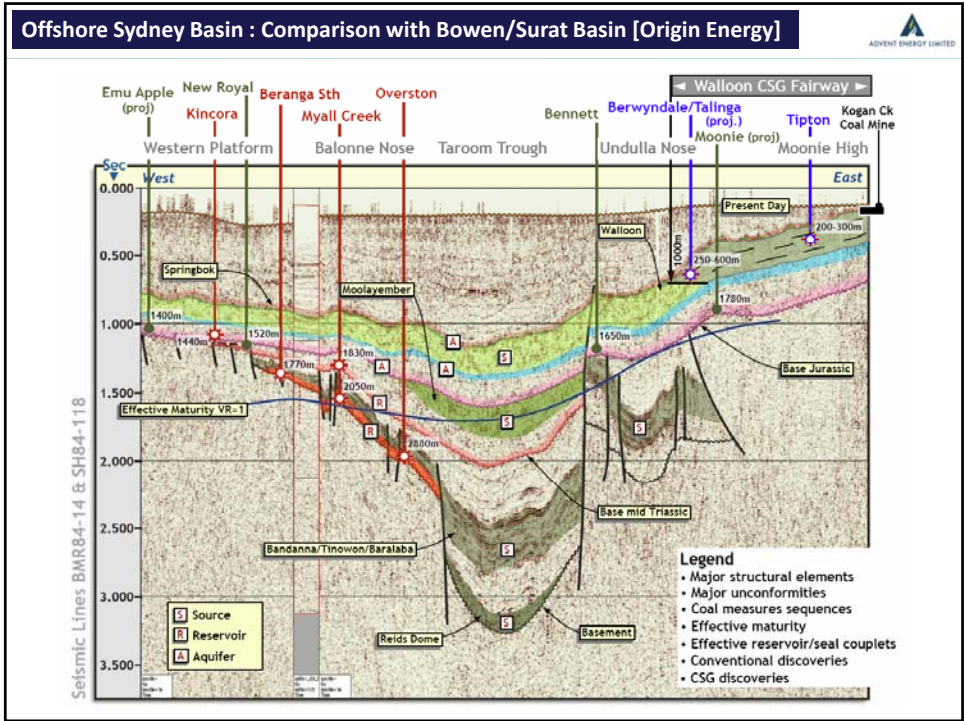
ADVENT ENERGY LIMITED

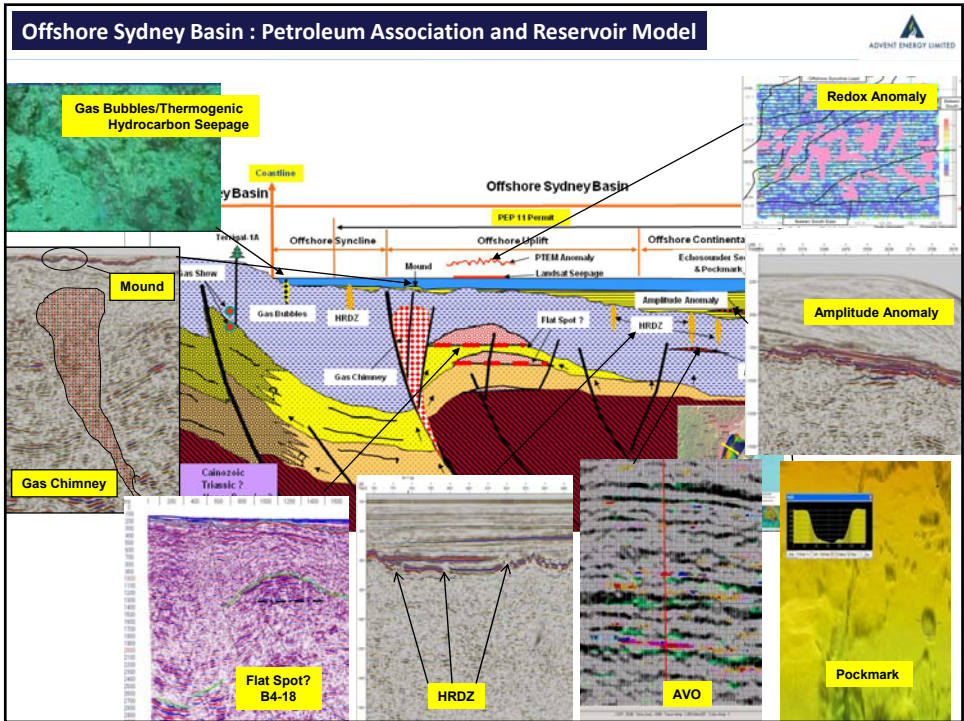
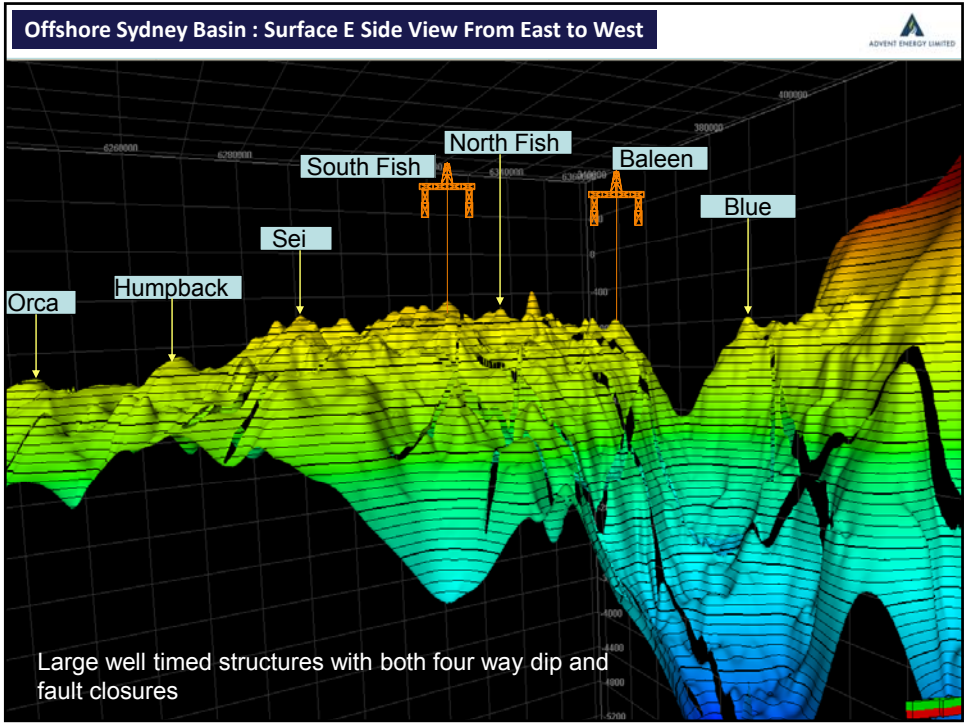


Rock outcrops comprising south of Astoria Beach

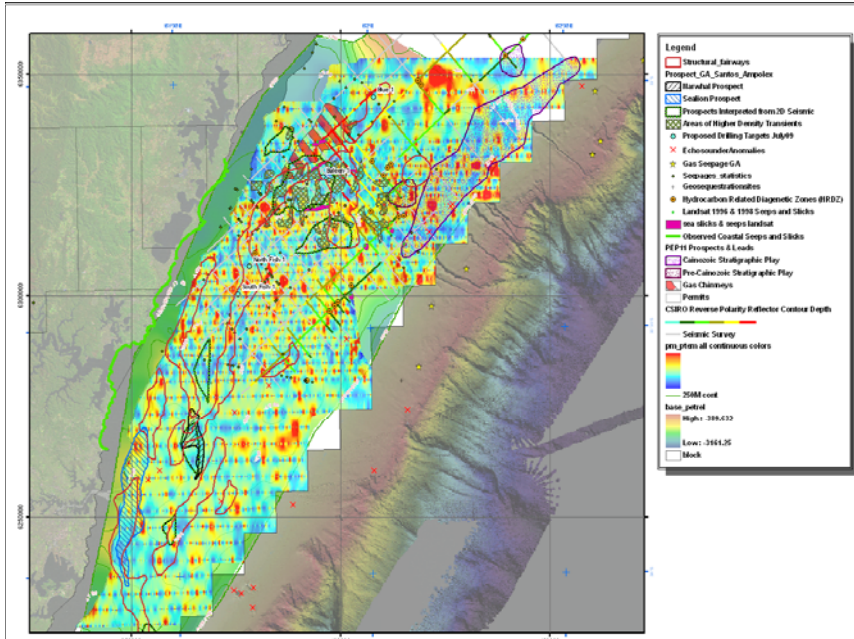
- NSW Dept of Mineral Resources:**
- “Reservoir potential should increase to the east, in the offshore”**
- “Early Permian sands are likely to / have good initial primary porosity and permeability.”**
- Reservoir Rocks : Fluvial Sandstone in Permian and Triassic**

- Outer-shelf systems of the Lower to Upper Permian Wandrawandian Formation and Middle Branxton Formation – silty / low porosity onshore but better reservoir facies postulated to exist offshore (Maung 1997 / Alder 1998).
- Upper Permian wave dominated delta systems of the Nowra and Muree Sandstones, especially reworked regressive, quartz rich units (porosities to 12%).
- Narrabeen Group sandstones (Triassic) porosities up to 31%
- Fracture systems abound?

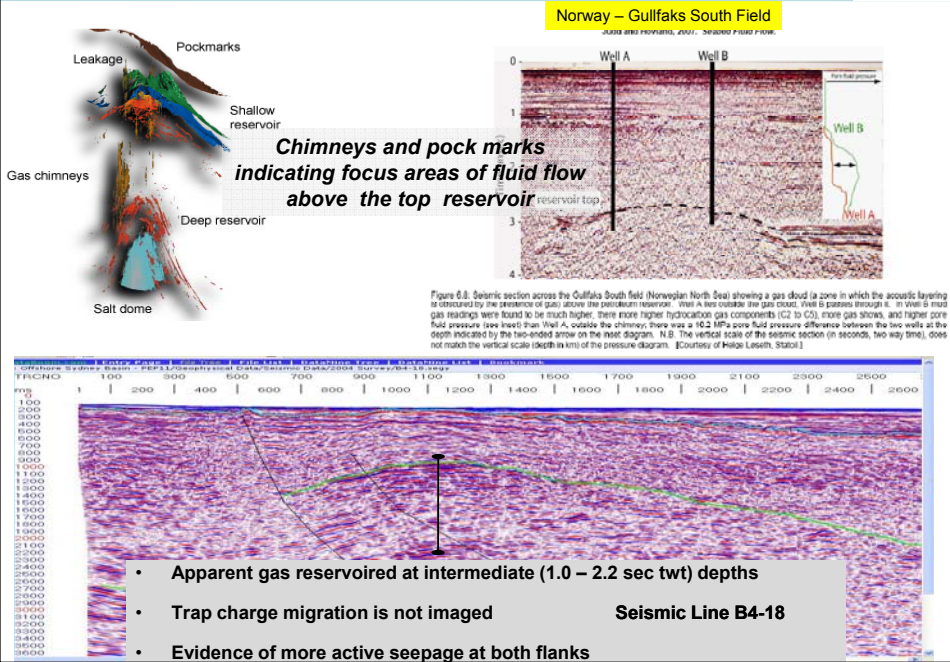




Offshore Sydney Basin – Key Hydrocarbon Indications and Features



Fluid Migration



NSW is heavily reliant on imported gas

10

Current suppliers:

- > Cooper Basin – onshore, declining production
- > Gippsland Basin – offshore, growing importance
- > Bowen / Surat – onshore CSG, recently linked through AGL initiated infrastructure - BWP and QSN pipelines
- > Sydney – onshore CSG, modest output close to market



NSW Government objective is for future baseload power generation to be gas fuelled – The Australian 19/11/2009

- NSW Mineral Exploration & Investment Conference
- August 2009
- AGL External

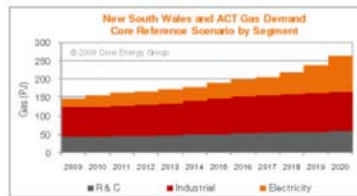


Forecast NSW and ACT Gas Demand

(Source: Core Energy Group, 2009)

12

Under Core's Reference Demand Scenario, NSW and ACT gas demand is forecast to grow from 148PJ in 2009 to 264PJ in 2020. This equates to a CAGR of 5.4%.



New Generation Detail:

	Online	Capacity
New Gen 1	2015	400MW Gas CCGT
New Gen 2	2019	750MW Gas CCGT

Segment	CAGR (2009 - 2020)	Reason for Growth
R & C	3.0%	Organic growth
Industrial	2.3%	Organic growth
Power Generation	14.9%	Organic growth plus two new generators to meet expansion

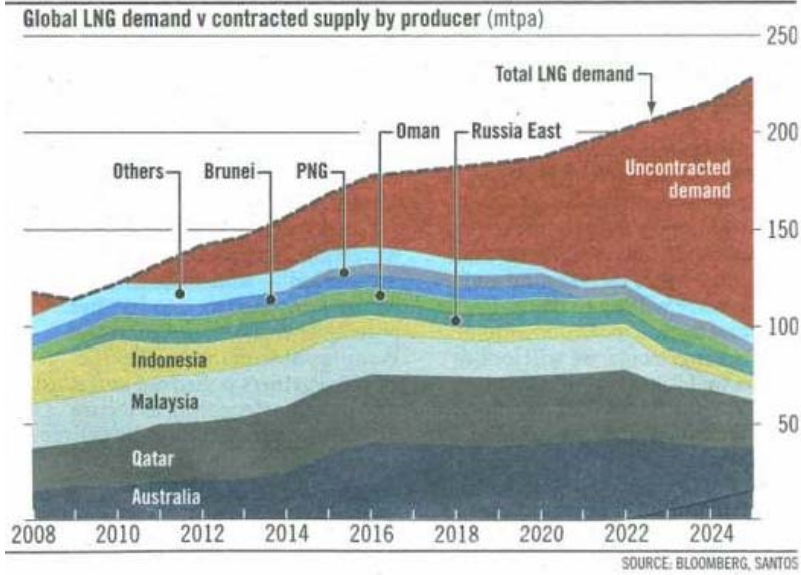
- NSW Mineral Exploration & Investment Conference
- August 2009
- AGL External



LNG Market



“LNG supplies only 2% of world energy” – BRW June 2009



Advent Energy Ltd



Background

- *Formed in 2004 as an unlisted oil and gas exploration and production company based in Perth, Western Australia
- *Has a portfolio of assets both onshore and offshore Australia that have had an estimated USD 126m spent on historic exploration
- *Portfolio estimated P10 prospective recoverable resources of approximately 13.9 Tcf gas and 139 MMbbl oil/condensate Net to Advent, excluding additional corporate interests and newly determined hydrocarbon plays
- *Secured funding agreements from Talbot Group Holdings for AUD 7 million and BPH Corporate for AUD 14 million as part of equity issue of 55 million shares at AUD0.50 per share
- *Company currently held mainly by MEC Resources (ASX: MMR), BPH Corporate (ASX: BPH) and Grandbridge Ltd (ASX: GBA).

Permit Inventory at a Glance

Permit	Interest / Prospective Interest	Major Partner	Basin
PEP11	85%	Bounty Oil & Gas	Offshore Sydney
EP325	8.3%	Strike Energy	Exmouth (Carnarvon)
EP386	100%		Onshore Bonaparte
RL1	100%		Onshore Bonaparte
EP419	3% Royalty	Exoma Energy	Perth

Key Personnel

- Mr Goh Hock – Chairman:** A former President of Schlumberger Asia and then a Global Divisional President of Schlumberger during a 25 year career in the oil and gas industry spanning over 10 countries through Asia (incl. Australia), the Middle East and Europe.
- Mr David Breeze – Executive Director:** A professional company director with extensive experience in transaction structuring, corporate advisory and funding for listed and unlisted companies.
- Mr Ding Gui Ming – Geology Advisory Panel Chair:** A former Chinese Government Vice Minister. Previously held the positions of President of Daqing Oil and Head of Exploration for the China National Petroleum Company (CNPC), where he directed the exploration activity of more than 20 oilfields in China.
- Mr Eng Hin Tan – Non-executive Director:** A private equity investor who previously worked with Schlumberger Oilfield Services in India, Brunei, Indonesia and Malaysia.
- Ms Deborah Ambrosini – CFO & Co Secretary:** A corporate accountant with over 10 years experience in accounting and corporate development spanning the biotechnology, mining, IT communications and financial services sectors.
- Mr Jim Dirstein** - petroleum geophysicist with over 25 years experience, specialising in cutting-edge technologies to improve corporate exploration/exploitation work flows.
- Mr Tim Berge** – Internationally recognised and published geophysicist with over 30 years of experience.
- Mr Lan Nguyen** – Ex MD of Mosaic Oil (ASX: MOS). Over 20 years experience in O&G industry across geophysics, geology, reservoir and production engineering and drilling and completion engineering.
- Mr Fred Kroh** – Seismic processing specialist and former Project Leader of the Geophysical Processing and Data Access Project for Geoscience Australia.
- Mr Phil Duff** – Drilling Services manager and former General Manager of AGR-Peak

Contributions Gratefully Acknowledged and References



Data, advice, review and technical contributions gratefully acknowledged

- Jim Dirstein - Total Depth - Principal Geophysical Consultant PTEM survey
- Fred Kroh –Formerly Project Leader of Geophysical Processing and Data Access Project - Geoscience Australia
- Tim Berge –Geophysical Consultant -
- Deet Schumacher - Terralience
- Dan Orange
- Fred Aminzadeh
- David Connolly
- Michael Abrams
- Professor Ron Boyd –Newcastle University
- Andrew Mayo –Macquarie Oil –
- Kriton Glenn –Geoscience Australia
- Ben Clennel , Asrar Talukder and team (CSIRO Subsurface Prediction and Description)
- Geoff O'Brien –Formerly Geoscience Australia
- Ding Gui Ming –Principal Geological Consultant
- Associate Professor Jock Keene –Sydney University
- Kevin Ruming - School of Environmental and Life Sciences University of Newcastle
- BOS
- Oil Hunters
- Bounty Oil
- RPS
- BGP
- John Cant
- Allan Williams -NPA
- Mike Rego – Aminex
- Tom Fontaine
- Fugro
- Geoscience Australia
- Crown Minerals NZ
- Kieth Woolard
- David Orth
- David Remus

Publications

- AAPG Memoirs "Hydrocarbon migration and its Near surface Migration"
- Judd A and Howland M "Seabed Fluid Flow"
- Whelan J Marine Chemistry and Geochemistry, Woods Hole Oceanographic Institution "Dynamic gas driven petroleum systems" and Whelan J et al "Surface & subsurface manifestations of gas movement through a N-S transect of the Gulf of Mexico"
- Government of NSW "New South Wales Petroleum Potential"
- NSW Department of Mineral Resources
- Alder et al "Prospectivity of the Offshore Sydney Basin –A New Perspective"
- Frog Tech Pty Ltd
- Aftenbladett Multimedia
- The European Commission "The Deep Sea Frontier"
- Aminzadeh, F., de Groot, P., Berge, T. et al "Determining Migration Pathway from seismically derived Gas"
- Geoscience Australia –Patchett, A and Langford, R. "New South Wales –Deep Saline Aquifer Storage Potential"
- Geoscience Australia Glenn, K "Revealing the continental Shelf off New South Wales"
- Aminzadeh F Connolly D and Ligtenberg H "Hydrocarbon Phase detection and other applications of Chimney Technology"
- Dietmar Schumacher, Surface geochemical exploration for oil and gas: New life for an old technology Geo-Microbial Technologies, Ochejata, Oklahoma, U.S. [The Leading Edge](#)
- Michael A. Abrams "Significance of hydrocarbon seepage relative to petroleum generation and entrapment" Marine & Petroleum Geology
- AAPG Conference Geoffrey W O'Brien, Andrew Barrett, and Megan Lech. "Integrating 3D Seismic data and multiple, independent remote sensing technologies to constrain near-surface Hydrocarbon Migration and Seepage Rates and Leakage Mechanisms on the North-western Australian Margin"
- Journal of Geophysical Research, The world's most spectacular marine hydrocarbon seeps (Coal Oil Point, Santa Barbara Channel, California):
- Marine & Petroleum Geology N. Rollet, GA Logan, JM Kennard, PE O'Brien, AT Jones, M Sexton Characterisation and correlation of active hydrocarbon seepage using geophysical data sets: An example from the tropical, carbonate Yampi Shelf, Northwest Australia
- Daniel Lewis Orange The implications of Hydrocarbon seepage, gas migration and fluid overpressures to frontier exploration and geohazards
- Dietmar Schumacher AAPG Hedberg Conference Near Surface Hydrocarbon Migration, Mechanisms and seepage rates The Dynamic Nature of Hydrocarbon Microseepage: An Overview
- O'Brien et al "Yampi Shelf Browns Basin –Northwest Shelf "
- Cowley R & O'Brien "Identification and interpretation of leaking hydrocarbons using seismic data"
- Kroh F Reprocessing shows AVO potential for petroleum exploration Geoscience Australia



ADVENT ENERGY LIMITED

David Breeze
Director
Advent Energy Limited
14 View Street
North Perth WA 6006
Australia

Ph +61 8 9328 8711
Fax +61 8 9328 8733

david@adventenergy.com.au
www.adventenergy.com.au

DISCLAIMER

Advent Energy Ltd (Advent Energy) has prepared this Company Introduction Presentation. Whilst the information contained in this publication has been prepared with all reasonable care from information provided by the Company and from sources, which Advent Energy Ltd believes are reliable, no responsibility or liability is accepted by Advent Energy Ltd for any errors or omissions or misstatements however caused. Any opinions forecasts or recommendations if any reflects the judgment and assumptions of Advent Energy Ltd as at the date of the publication and may change without notice. Advent Energy Ltd and its officers, agents, employees, consultants and its related bodies corporate, exclude all liability whatsoever, in negligence or otherwise, for any loss or damage relating to this document to the fullest extent permitted by law. This publication is not and should not be construed as an offer to sell or the solicitation of an offer to purchase or subscribe for any investment. Any securities recommendation contained in this publication is unsolicited general information only. Advent Energy Ltd is not aware that any recipient intends to rely on this publication or of the manner in which a recipient intends to use it. In preparing our information, it is not possible to take into consideration the investment objectives, financial situation or particular needs of any individual recipient. Investors should obtain individual financial advice from their investment advisor to determine whether recommendations contained in this publication are appropriate for their investment objectives, financial situation or particular needs before acting on any such recommendations. This publication is not for public circulation or reproduction whether in whole or in part and is not to be disclosed to any person other than the intended recipient, without obtaining the prior written consent of Advent Energy Ltd. Advent Energy Ltd its officers, employees, consultants or its related bodies corporate may, from time to time hold positions in any securities and may buy or sell such securities or engage in other transactions involving such securities.