



ACN 100 796 754

28 September 2010

Company Announcements Office  
Australian Securities Exchange Limited  
20 Bridge Street  
SYDNEY NSW 2000

## **INFILL SAMPLING PROGRAM CONFIRMS AND EXTENDS SIGNIFICANT ARSENIC – GOLD ANOMALISM AT THE MIAREE GOLD PROJECT**

Red River Resources Limited (ASX: RVR, “Red River”), in conjunction with joint venture partner Iron Mountain Mining Limited (ASX: IRM, “Iron Mountain”), is pleased to announce that recently completed stage 2 infill soil sampling at the Bergsma Prospect has enhanced and extended the previously delineated arsenic – gold geochemical anomaly within E47/1309 (see Fig.1).

The Bergsma Prospect is interpreted as being a possible major splay oblique to the Sholl Shear Zone to the south. Prior to reports of a metal detector gold rush to an area south of Karratha in December 2009 and subsequent geochemical sampling by the joint venture, the region was not recognised as being a potential gold producer.

A total of 497 geochemical soil samples were collected during August-September 2010 on a 100m x 50m grid as part of a stage 2 program to close and infill zones within the original 500m x 50m sampling grid that had defined a 2km long arsenic anomaly with associated strong gold anomalism. Results from the stage 2 sampling have enhanced both the width and intensity of the previously defined arsenic (see Fig.2) and gold (see Fig.3) anomalies as well as identifying additional gold anomalism in a series of three additional en-echelon trends approximately 2km northwest and parallel to the Bergsma Prospect (see Fig.4). The repetitive nature and alignment of the interpreted Walter, Crystal and Cockatoo Prospects lends further support to the proposed localised model of NE-SW extensional splay faulting oblique to the Sholl Shear Zone to the south.

In addition to the Bergsma Prospect arsenic-gold anomaly being favourably located adjacent to a granite-greenstone contact, arsenic anomalism at this scale can often be associated with large porphyry-stockwork mineralised systems. Exposed outcrop in the vicinity of the Bergsma Prospect indicates that the dip of the host rocks in the area is near vertical. Evaluation of localised geomorphology and its potential impact on anomaly creep will also be undertaken to improve and refine the joint ventures understanding of the potential source of mineralisation.

**Address** Level 7/231 • Adelaide Terrace • Perth • Western Australia • 6000

**Mailing address** PO Box 3235 • 256 Adelaide Terrace • Perth • Western Australia • 6832

**T** +61 (8) 9225 4917 **F** +61 (8) 9225 6474 **E** [info@redriverresources.com.au](mailto:info@redriverresources.com.au)

[www.redriverresources.com.au](http://www.redriverresources.com.au)

Stage 3 sampling to infill anomalous zones down to 50m x 25m has been approved and is expected to be completed during October 2010. A combined total of approximately 600+ samples are planned to be collected from both the Bergsma and Walter-Crystal-Cockatoo Prospects, the results of which will be used to draft a Program of Work aimed at drill testing various prospects within the Miaree Gold Project for the source of the surface anomalism.



J Karajas  
Managing Director

28 September 2010

---

*The information within this report as it relates to geology and mineral resources was compiled by the Managing Director Mr John Karajas. Mr Karajas is a Member of the Australian Institute of Geoscientists. Mr. Karajas has sufficient experience which is relevant to the style of mineralization and the type of deposit under consideration to qualify as a Competent Person as defined in the 2004 Edition of the "Australasian Code for Reporting of Exploration Results, Mineral Resources and Ore Reserves, the JORC Code". Mr Karajas consents to the inclusion in the report of the matters based on information in the form and context which it appears.*

---

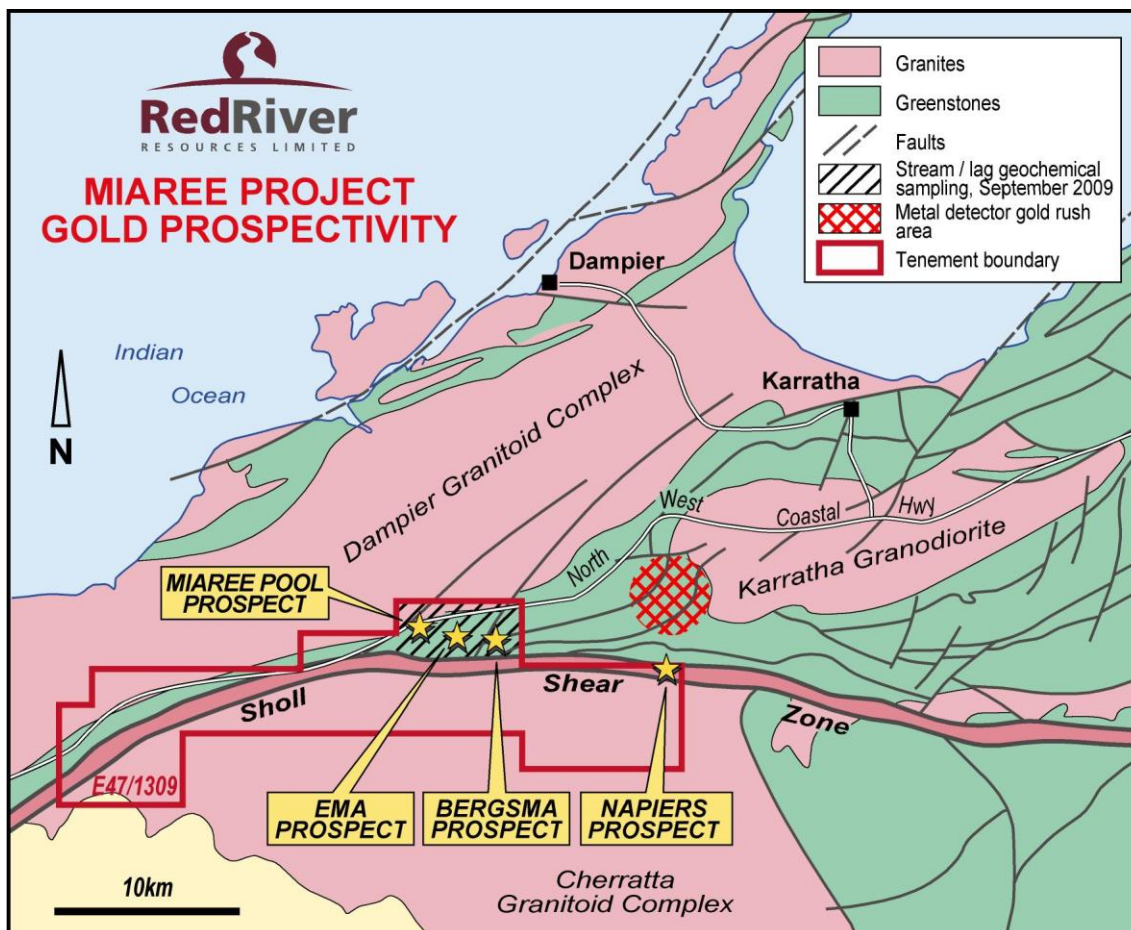


Figure 1 – Location of Bergsma Prospect within Miaree Gold Project

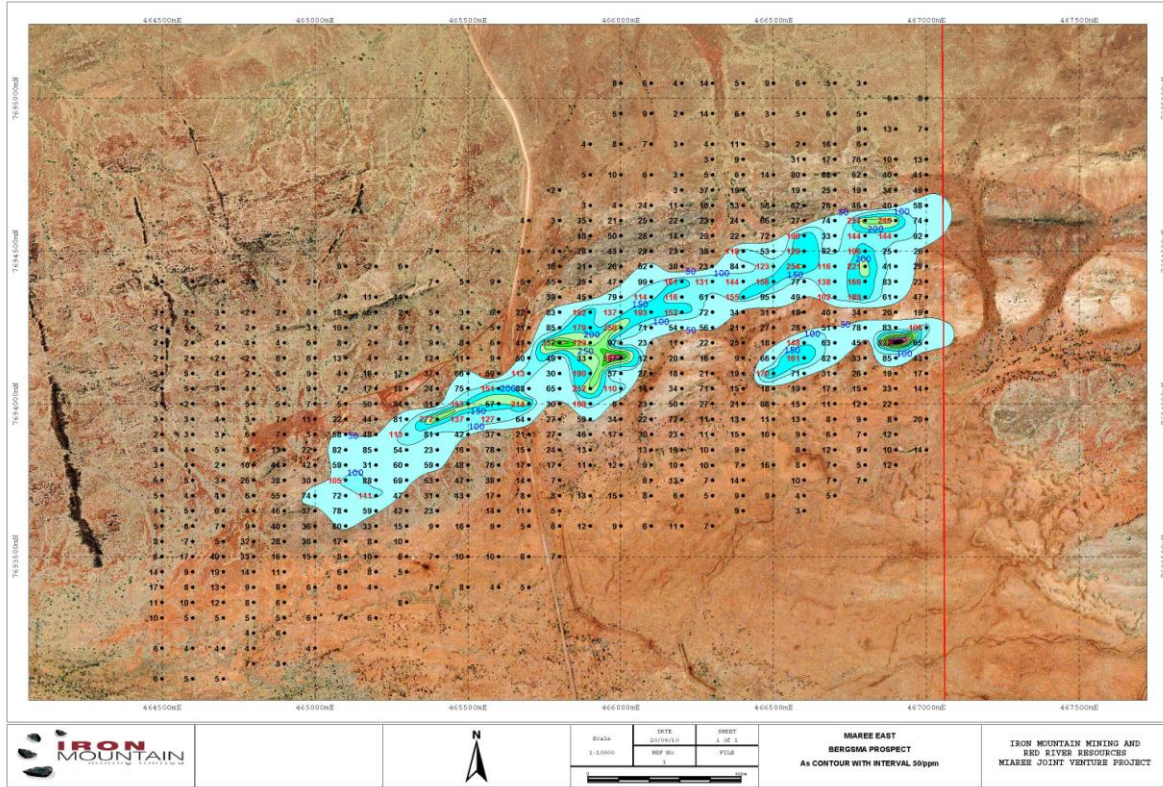


Figure 2 – Stage 2 extended arsenic anomaly over the Bergsma Prospect

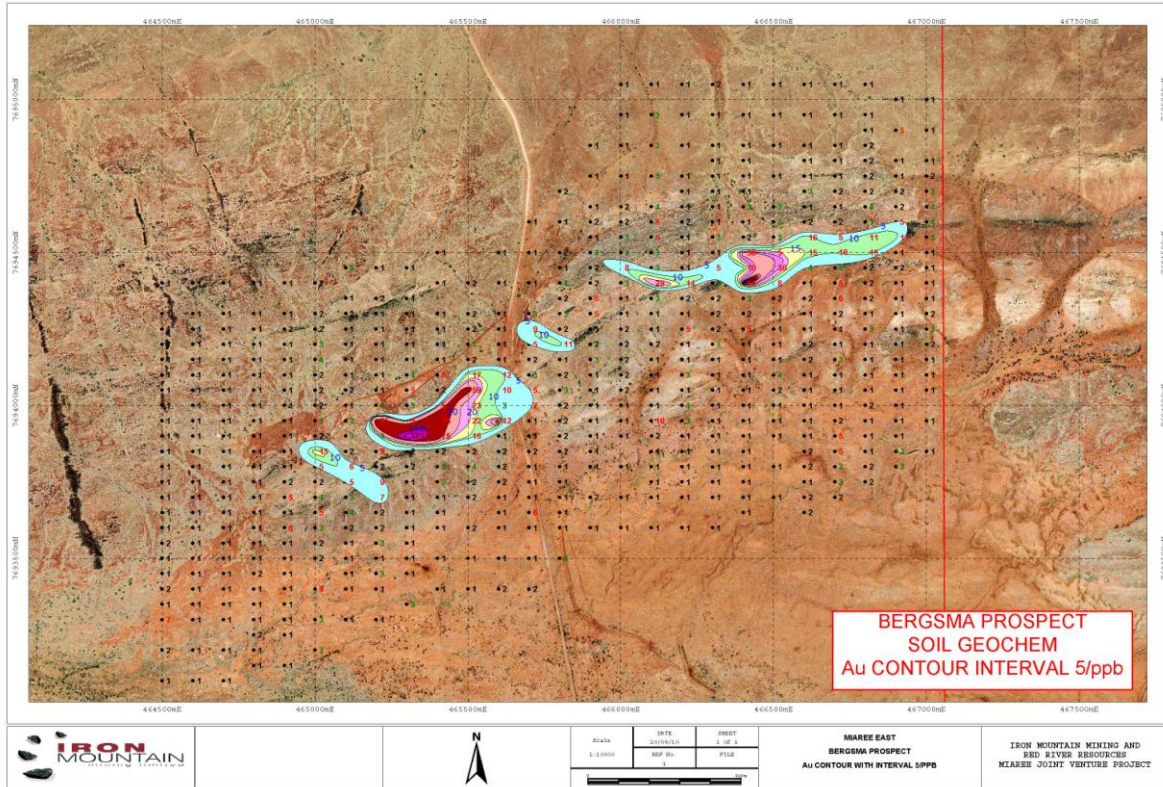


Figure 3 – Stage 2 extended gold anomaly over the Bergsma Prospect

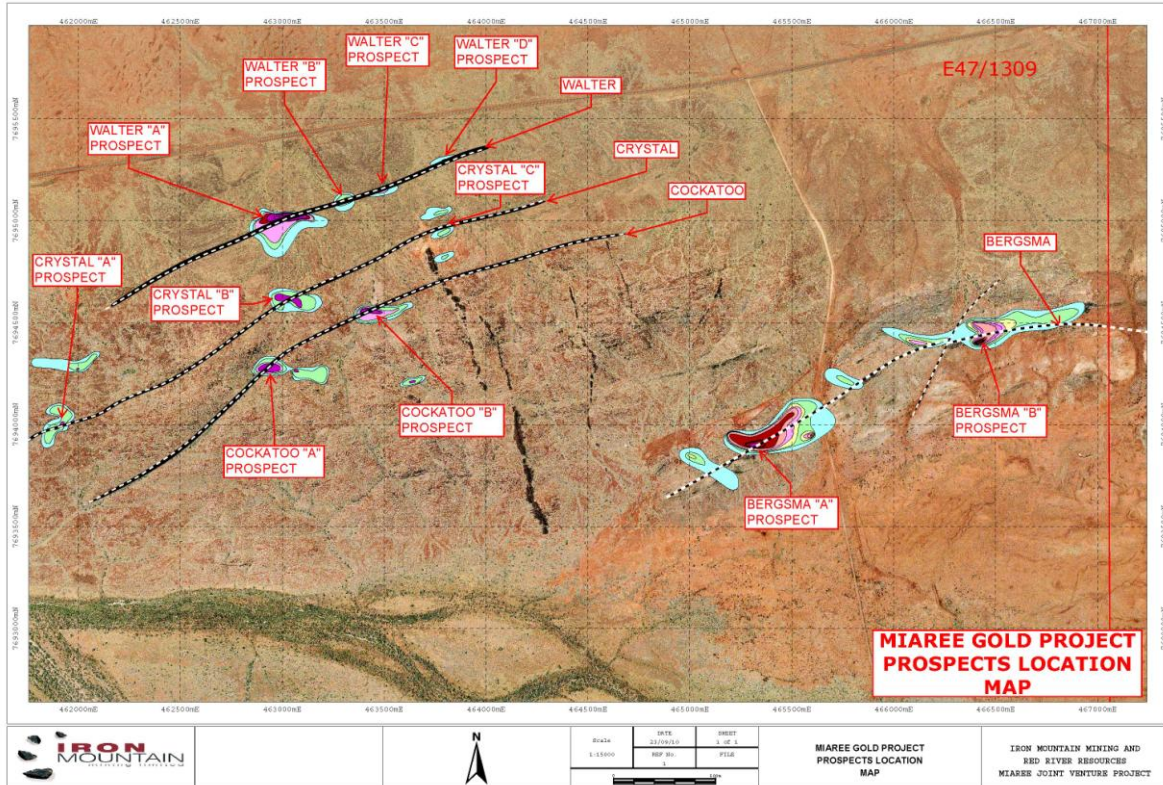


Figure 4 – Bergsma Prospect and Walter-Crystal Cockatoo gold anomalism