

ASX and Media Release: 9 June 2010

ASX code: RXM

Hillside Copper Project, South Australia

- **Continued shallow supergene copper intersected**
- **Drilling proves a large shallow copper system at Hillside**
- **Maiden Mineral Resource on track for late July 2010**

Rex Minerals Limited ("Rex") has received further drilling results from its 100% owned Hillside Copper Project on the Yorke Peninsula in South Australia.

Highlights from the drilling program at Hillside include:

- 62m @ 1.0% copper and 0.1g/t gold from 66m down hole (58m below the surface)
 - Including 13m @ 2.0% copper and 0.1g/t gold from 89m down hole
- 100m @ 0.9% copper and 0.4g/t gold from 29m down hole (26m below the surface)
 - Including 54m @ 1.1% copper and 0.6g/t gold from 75m down hole
- 43m @ 1.0% copper and 0.2g/t gold from 57m down hole (50m below the surface)
 - Including 7m @ 4.0% copper and 0.2g/t gold from 87m down hole
- 48m @ 1.0% copper and 0.3g/t gold from 187m down hole (164m below the surface)
- 38m @ 0.8% copper and 0.4g/t gold from 66m down hole (55m below the surface)

Rex's Managing Director Mr Steven Olsen said today "The additional shallow copper results consolidate our view that the Hillside project contains large, shallow zones of copper mineralisation that persist over a broad area."

"Rex has rapidly completed the drilling required to deliver its maiden Resource estimate by the end of July. Moving forward, we will continue to drill at this rate to further expand the Resource at Hillside" Mr Olsen said.

Some of the drill holes have identified copper mineralisation for cumulative down-hole lengths totalling over 100m (HDD074, HDD078 and HDD083). This gives further weight to Hillside becoming a large-scale copper project with the benefits of economies of scale.

As the understanding of Hillside has evolved, the initial discovery of deeper primary copper was found to be only a part of a much larger system which includes substantial near-surface copper mineralisation. The overall picture emerging is a project which hosts extensive copper mineralisation from 10m to over 500m beneath the surface and logically lends itself to large scale surface mining.

Rex currently has 6 drill rigs operating at the Hillside project (5 diamond and 1 RC), with the latest drilling results presented in table 1. Drilling over the last two months has been primarily focussed on the shallow copper mineralisation over the Songvaar magnetic feature (Figure 1).

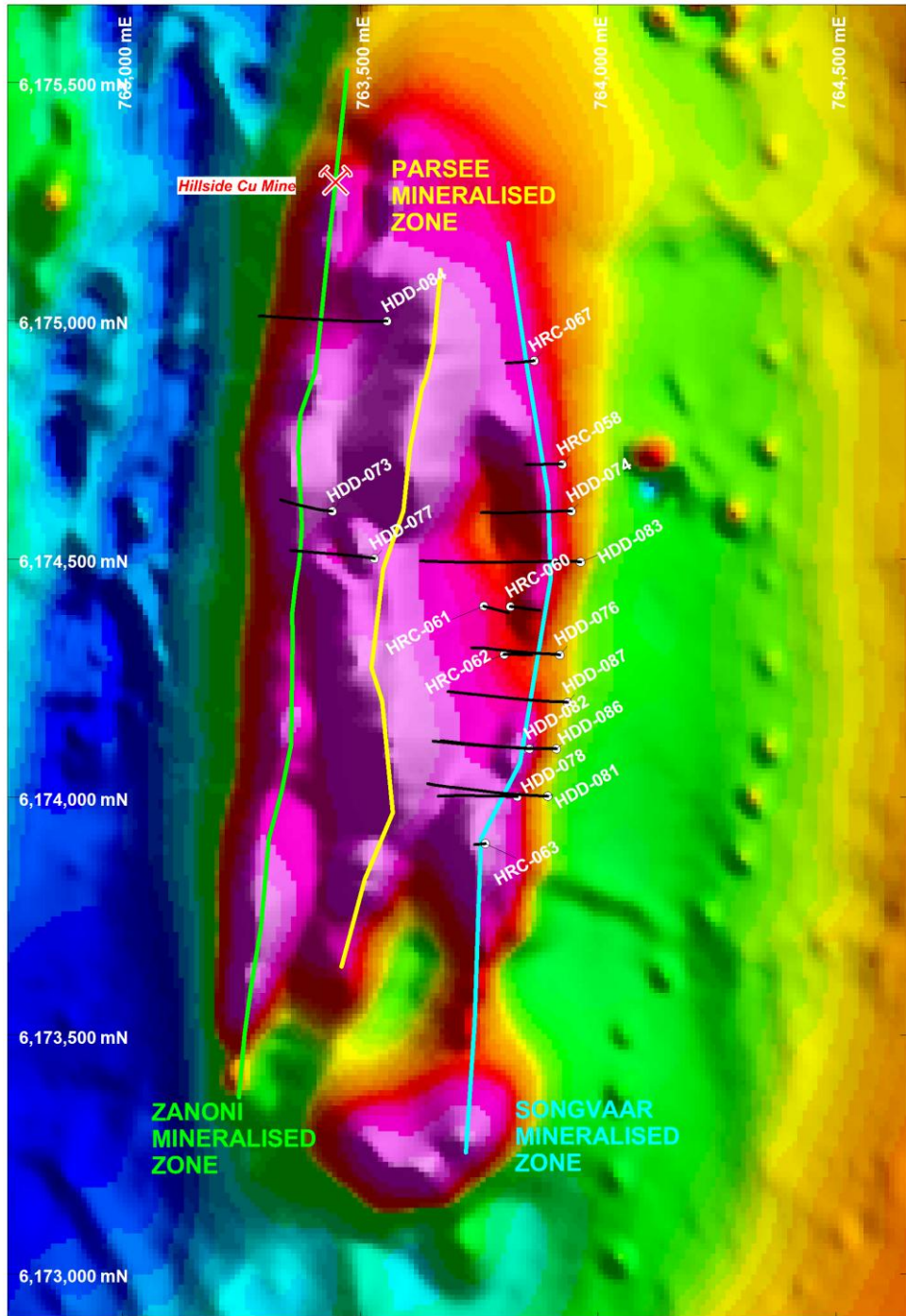


Figure 1: Hillside magnetic image showing the Zanoni, Parsee and Songvaar structures. Drill results detailed in table 1.

Table 1: Summarised results from drill holes HRC-058, HRC-060, HRC-061, HRC-062, HRC-063, HRC-067, HDD-073, HDD-074, HDD-076, HDD-077, HDD-078, HDD-081, HDD-082, HDD-083, HDD-084, HDD-086 and HDD-087.

HOLE ID	FROM (m)	TO (m)	INTERVAL (m)	Cu (%)	Au (g/t)	Structure
HRC-058	47	53	6	0.5	0.2	Songvaar (s)
	66	104	38	0.8	0.4	Songvaar (s)
<i>including</i>	78	104	26	1	0.4	Songvaar (s)
HRC-060#	57	100	43	1	0.2	Songvaar (s)
<i>including</i>	87	94	7	4	0.2	Songvaar (s)
HRC-061	94	117	23	0.7	0.2	Songvaar (s)
<i>including</i>	114	117	3	2	1.5	Songvaar (s)
HRC-062#	0	2	2	0.4	0.1	Songvaar (s)
	60	62	2	-	1.3	Songvaar (s)
	73	93	20	1	0.6	Songvaar (s)
HRC-063	11	58	47	0.5	0.4	Songvaar (s)
HRC-067	100	111	11	0.6	0.1	Songvaar (s)
<i>including</i>	107	109	2	1.3	0.1	Songvaar (s)
HDD-073	128	137	9	0.7	0.2	Zanoni (p)
	189	194	5	0.6	-	Zanoni (p)
	241	262	21	0.4	-	Zanoni (p)
<i>including</i>	249	251	2	1.4	0.2	Zanoni (p)
HDD-074#	41	49	8	0.3	-	Songvaar (s)
	61	62	2	-	1.3	Songvaar (s)
	66	128	62	1	0.1	Songvaar (s)
<i>including</i>	89	102	13	2	0.1	Songvaar (s)
	147	168	20	0.4	0.1	Songvaar (s)
	201	225	24	0.7	0.2	Songvaar (p)
<i>including</i>	214	221	7	1.4	0.3	Songvaar (p)
	258	263	5	0.7	0.1	Songvaar (p)

HDD-076	139	145	6	0.9	0.2	Songvaar (p)
	176	178	2	1.3	0.3	Songvaar (p)
	186	212	26	1	0.4	Songvaar (p)
	214	230	16	0.5	0.1	Songvaar (p)
HDD-077	433	440	7	0.7	0.3	Zanoni (p)
	541	546	5	0.6	0.2	Zanoni (p)
HDD-078	29	129	100	0.9	0.4	Songvaar (s)
<i>including</i>	52	56	4	1.9	0.2	<i>Songvaar (s)</i>
<i>including</i>	75	129	54	1.1	0.6	<i>Songvaar (s)</i>
	165	204	39	0.6	0.3	Songvaar (p)
<i>including</i>	191	196	5	1	0.3	<i>Songvaar (p)</i>
	304	307	3	1.2	0.2	Songvaar (p)
HDD-081	151	153	2	1.9	0.1	Songvaar (s)
	234	247	13	0.7	0.3	Songvaar (p)
<i>including</i>	244	247	3	1	0.6	<i>Songvaar (p)</i>
	262	292	30	0.6	0.4	Songvaar (p)
<i>including</i>	264	269	5	1.1	0.9	<i>Songvaar (p)</i>
	325	337	12	0.6	0.2	Songvaar (p)
HDD-082	126	148	22	0.7	0.2	Songvaar (p)
<i>including</i>	136	146	10	1	0.3	<i>Songvaar (p)</i>
HDD-083	104	182	58	0.4	0.1	Songvaar (s)
	187	235	48	1	0.3	Songvaar (p)
	260	266	6	1	0.2	Songvaar (p)
	302	330	28	0.5	0.1	Songvaar (p)
	342	363	21	0.4	-	Songvaar (p)
	461	486	25	0.6	0.3	Songvaar (p)
	508	519	11	0.4	0.1	Songvaar (p)
HDD-084	235	261	26	1	0.2	Zanoni (p)
<i>including</i>	244	250	6	2.1	0.3	<i>Zanoni (p)</i>
	261	282	21	0.3	0.1	Zanoni (p)
	366	374	8	0.6	0.1	Zanoni (p)
	408	423	15	0.4	0.1	Zanoni (p)

HDD-086	159	189	30	0.4	0.1	Songvaar (p)
<i>including</i>	<i>160</i>	<i>162</i>	<i>2</i>	<i>1.1</i>	<i>0.1</i>	<i>Songvaar (p)</i>
HDD-087	165	168	3	0.4	0.5	Songvaar (p)
	186	198	12	1	0.6	Songvaar (p)
	203	206	3	1	0.2	Songvaar (p)
	238	240	2	0.9	0.2	Songvaar (p)
	247	254	7	0.4	0.1	Songvaar (p)

(p) = Primary Mineralisation (s) = Supergene Mineralisation

* All intercepts reported are down hole unless otherwise specified

Twin hole

For Comment and Further Details

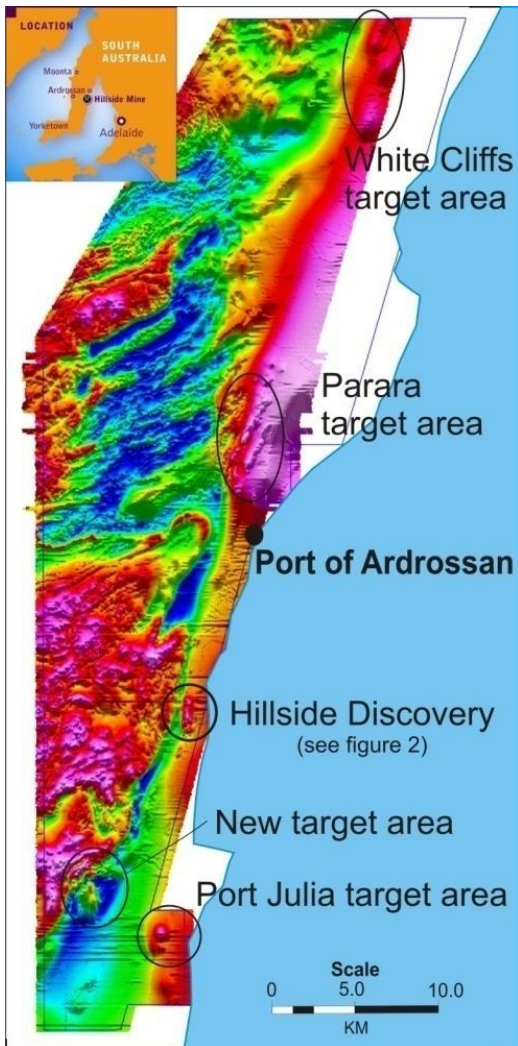
For more information about Rex Minerals and its projects please visit our website www.rexminerals.com.au or contact:

Steven Olsen (Managing Director)
or Amber Rivamonte (Company Secretary)
Phone: 03-5337-4000
E-mail: info@rexminerals.com.au

Media enquiries to:
Ian Howarth
Collins Street Media
Phone: 0407 822 319 or 03 9223 2465
Email: ian@collinsstreetmedia.com.au

About Rex Minerals

Rex is an Australian minerals exploration company focussed on the discovery of large scale copper in South Australia. Rex seeks to discover multiple copper deposits leading to the development of a large scale, low cost and long life mining operation on the Yorke Peninsula in South Australia.



The presence of copper on the Yorke Peninsula was first highlighted by a number of small and high grade historical copper mines that exist within a large regional fault known as the Pine Point Fault Zone.

Rex considers that most of the copper was not discovered by early prospectors as it lies underneath 10 to 50 metres of cover sediments and were effectively “hidden” from earlier explorers.

Rex is undertaking a number of geophysical surveys that enable geologists to “see through” the shallow cover sediments to identify potential sites for large scale copper-gold-uranium mineralisation. As part of this work, recent magnetic surveys have highlighted a large number of targets that exist along the Pine Point Copper Belt (see adjacent image).

Highlights from drilling at the first of these targets at Hillside include:

259m @ 1.7% copper and 0.4g/t gold
57m @ 1.5% copper and 0.4g/t gold
57m @ 1.4% copper and 0.2g/t gold
60m @ 3.0% copper and 0.5g/t gold

Competent Persons Report

The information in this report that relates to Exploration Results or Mineral Resources is based on information compiled by Mr Patrick Say who is a Member of the Australasian Institute of Mining and Metallurgy and is a full time employee of Rex Minerals Ltd. Mr Say has sufficient experience which is relevant to the style of mineralisation and type of deposit under consideration and to the activity which he is undertaking to qualify as a Competent Person as defined in the 2004 Edition of the ‘Australasian Code for Reporting of Exploration Results, Mineral Resources and Ore Reserves’. Mr Say consents to the inclusion in the report of the matters based on his information in the form and context in which it appears.