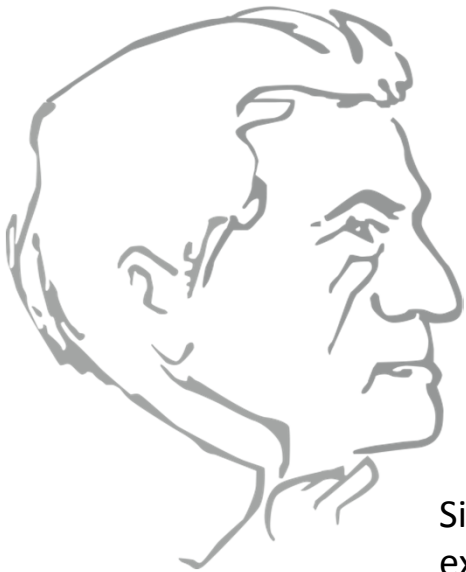




STRZELECKI
Metals Limited

STRZELECKI METALS LTD

European and Australian Operations



Presentation by John Santich
Director

Sir Paul Edmund Strzelecki was a noted Polish nobleman, explorer and geologist who explored the south east part of Australia from 1839 to 1843.

IMPORTANT INFORMATION

The information in this document is designed to be delivered in conjunction with a spoken presentation. It is intended as a guide to the potential of Strzelecki's projects and not as a guide to any investment decision in Strzelecki.

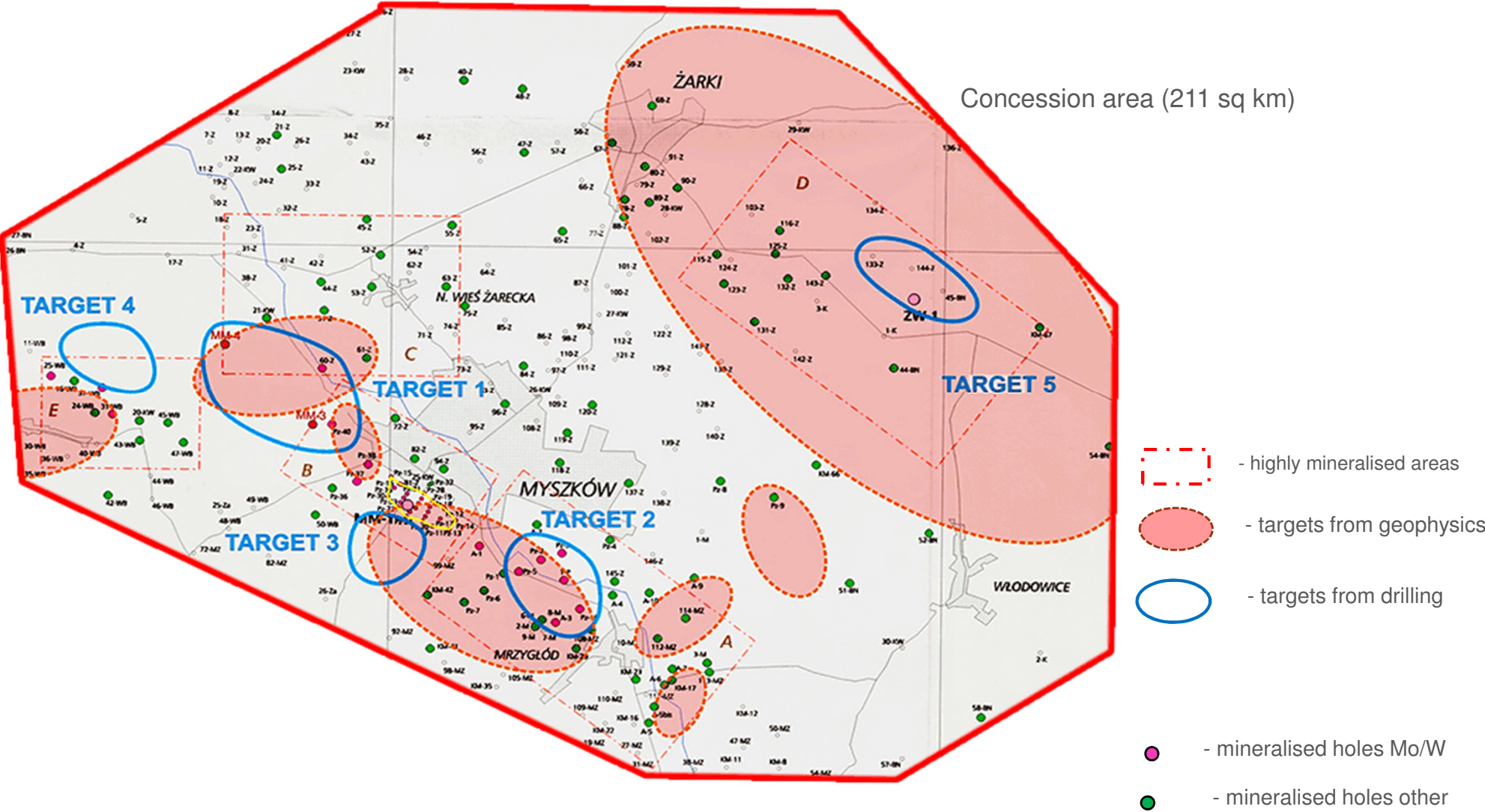
This document is not a disclosure document nor does it constitute the provision of financial product advice. Neither Strzelecki Metals Ltd nor any of its officers, employees or advisors makes or gives any representation, warranty or guarantee in relation to this document or its contents to any person. The information is provided expressly on the basis that recipients will carry out their own independent inquiries into the matters contained herein and make their own independent decisions about the affairs, financial position or prospects of the company or companies which reserves the right to update, amend or supplement any information at any time in its absolute discretion.

The information in this report that relates to Exploration Results, Mineral Resources or Ore Reserves has been compiled by Dr W Bogacz, Chairman of Strzelecki Metals' Polish subsidiary SKKGM and a Member of the Australian Institute of Geoscientists. Dr Bogacz has sufficient experience relevant to the style of mineralisation and type of deposit under consideration and to the activity he is undertaking to qualify as a Competent Person for the purposes of the 2004 Edition of the Australasian Code for Reporting of Exploration Results, Mineral Resources and Ore Reserves. Dr Bogacz consents to inclusion in the report of these matters based on their information in the form and context in which it appears.

Polish Projects

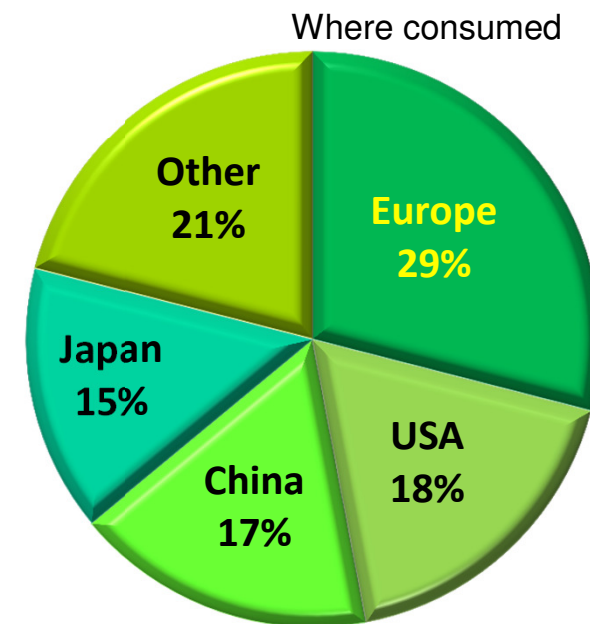
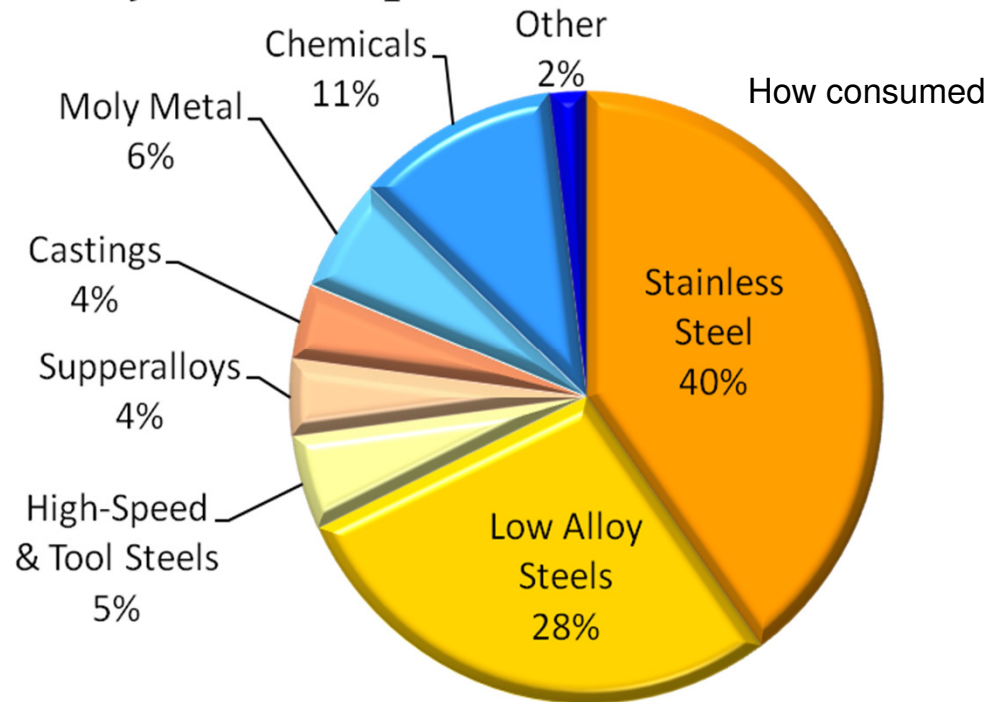


Myszkow Project



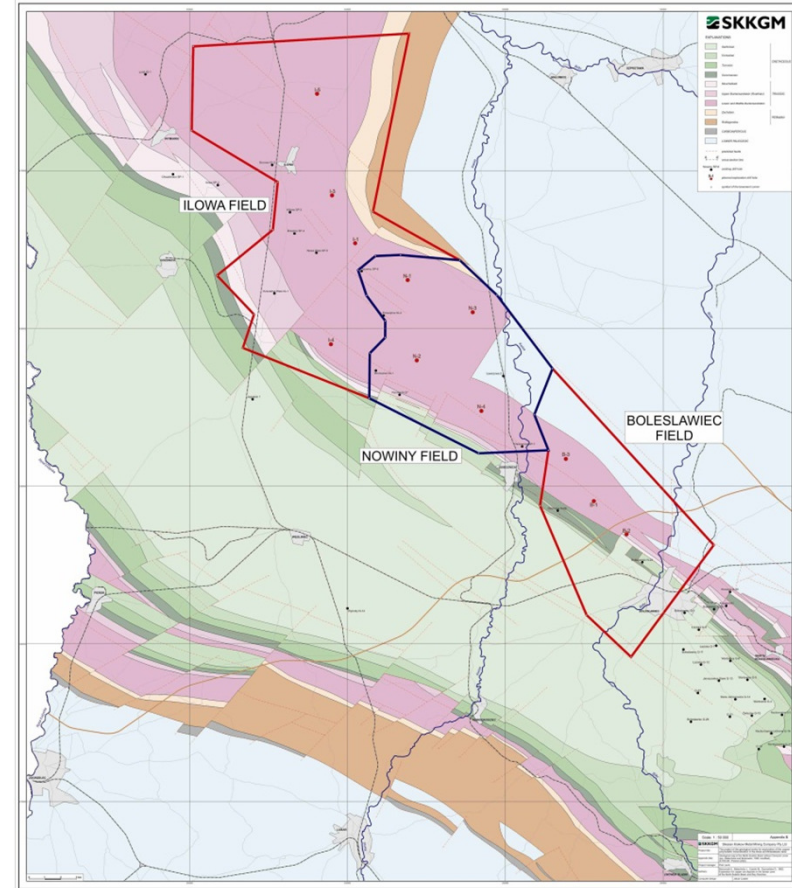
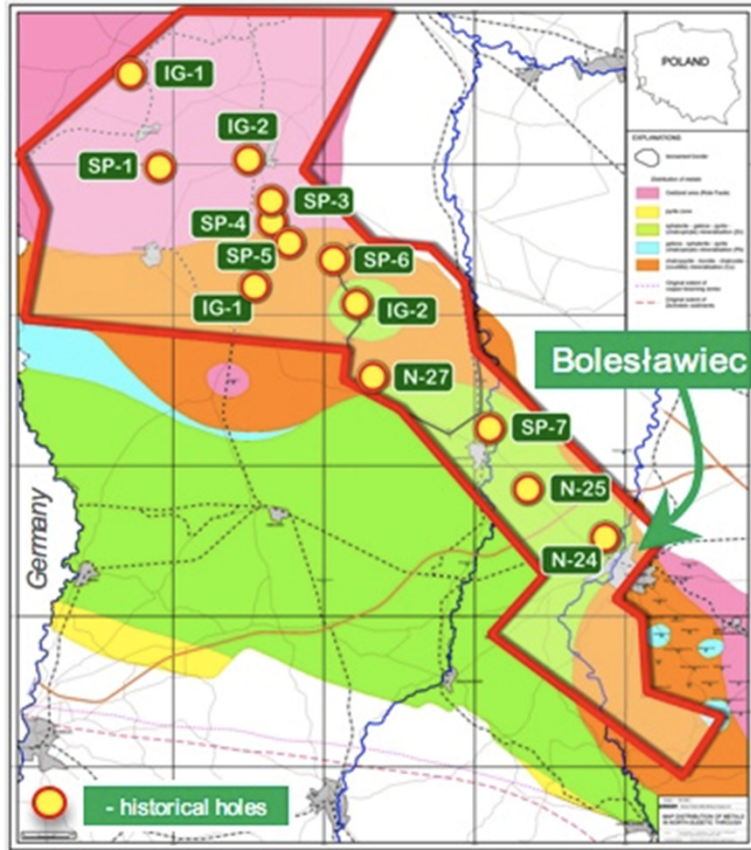
Molybdenum Consumption

Moly Consumption

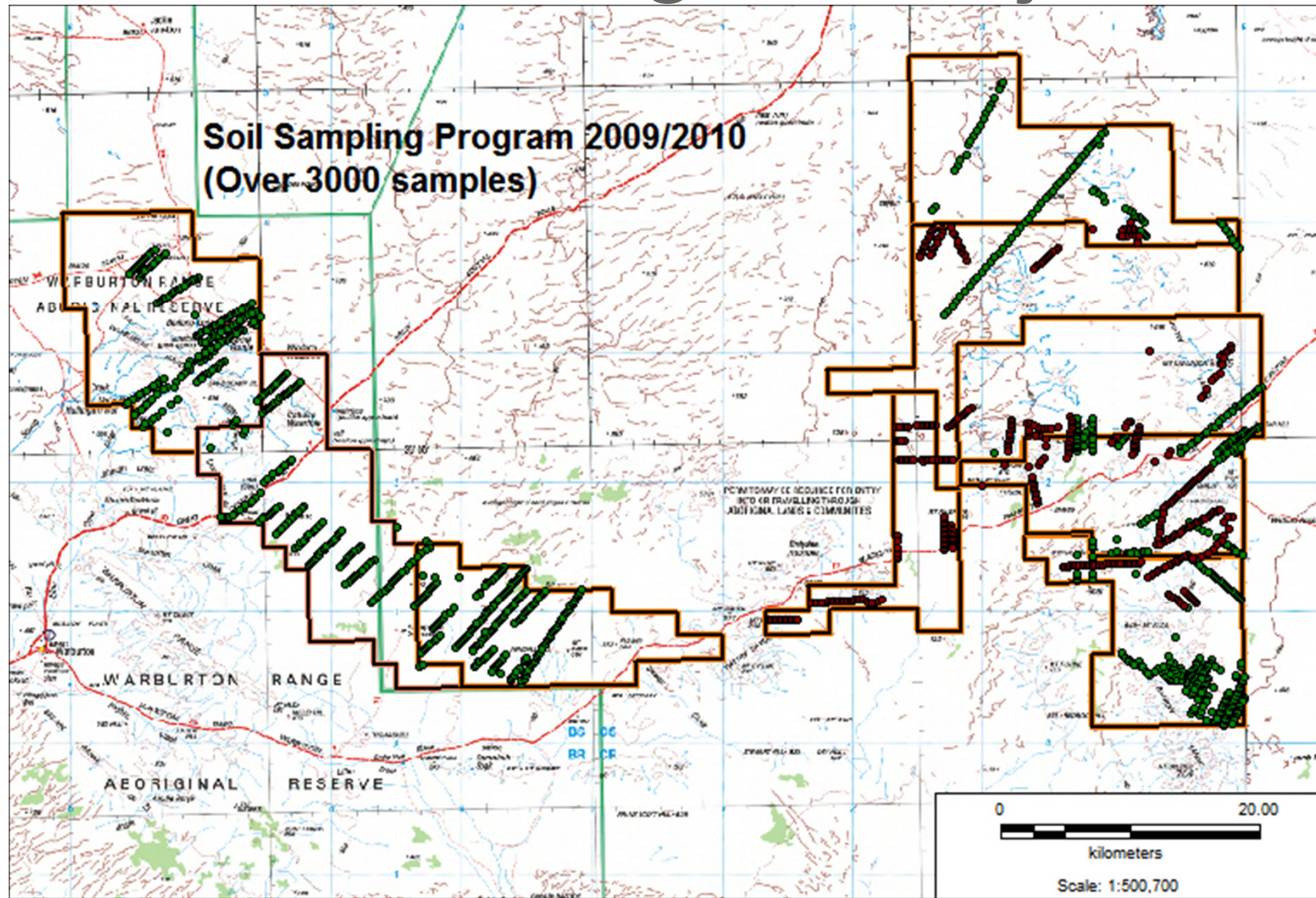


The World consumes 450+ million lbs of Mo p.a. (Source: IMOA)

Kupferschiefer Project



West Musgrave Project



West Musgrave Project



The camp

Soil sampling



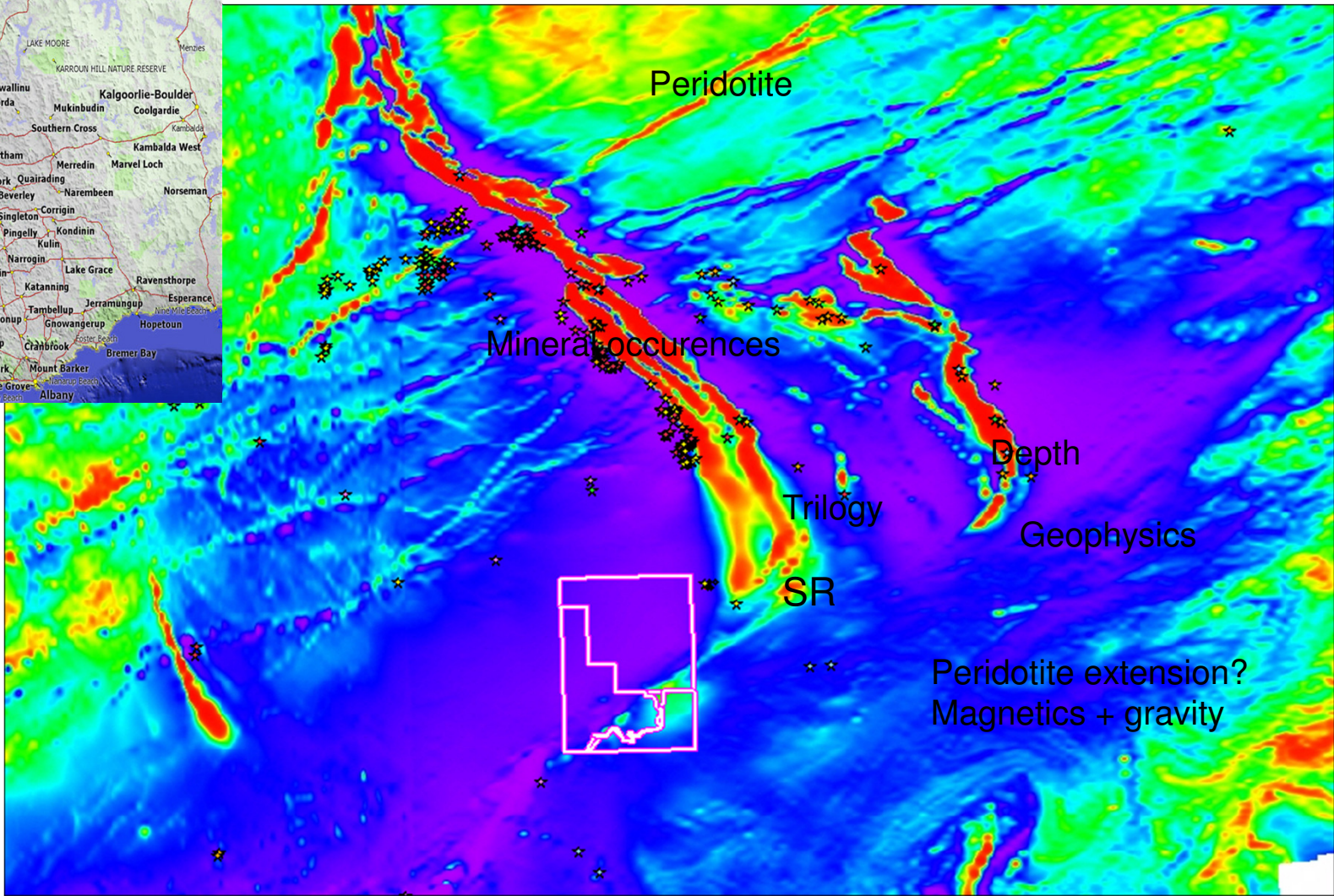
Musgrave Project Summary

Finalise soil analysis

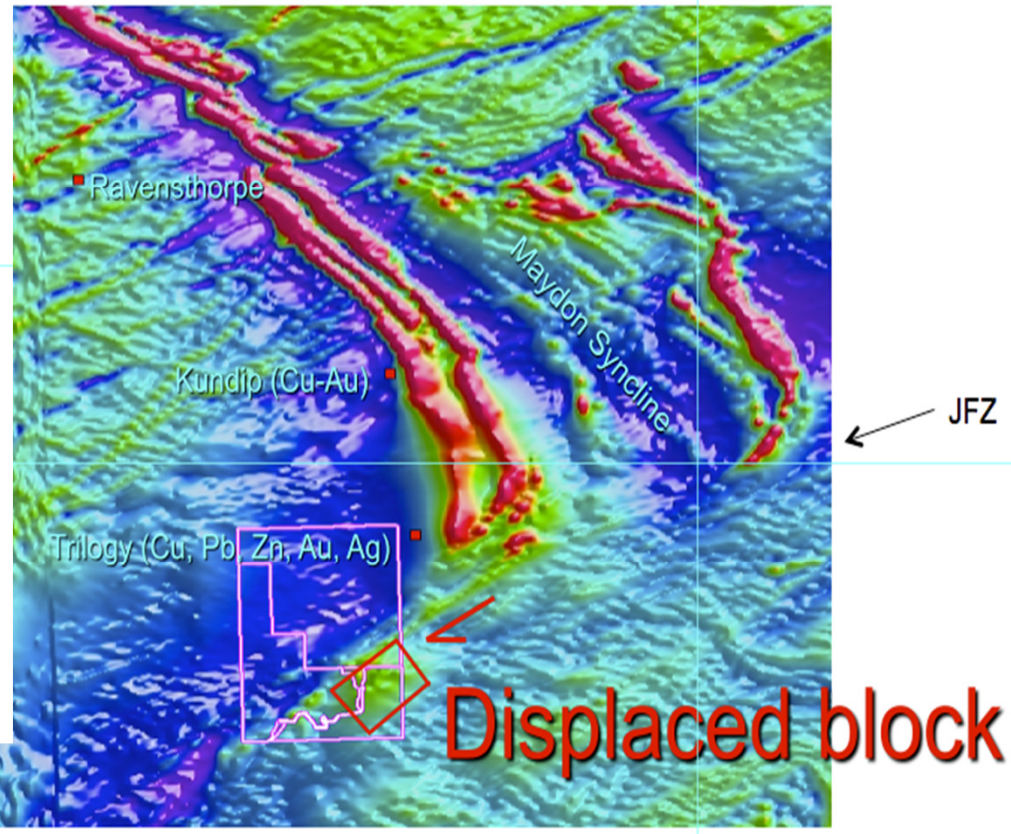
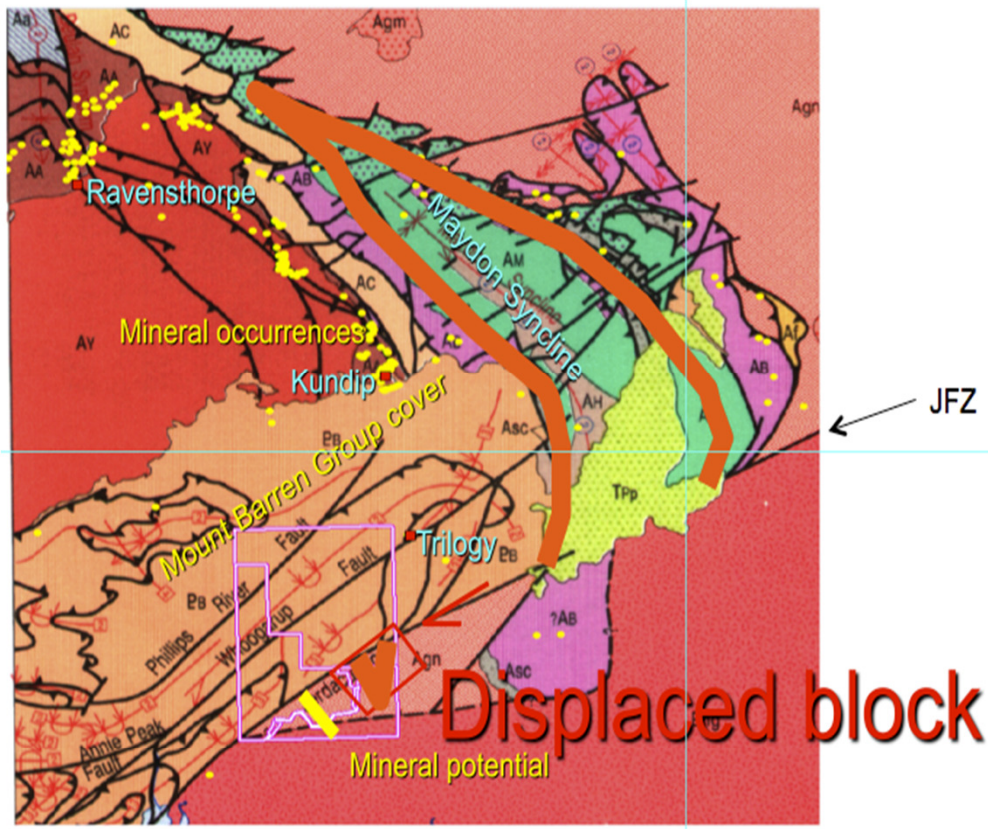
Assess results and targets

Preliminary drilling of targets

Steere Project Regional Magnetics



Steere Project – Geology and Geophysics



Displaced block

Displaced block

JFZ

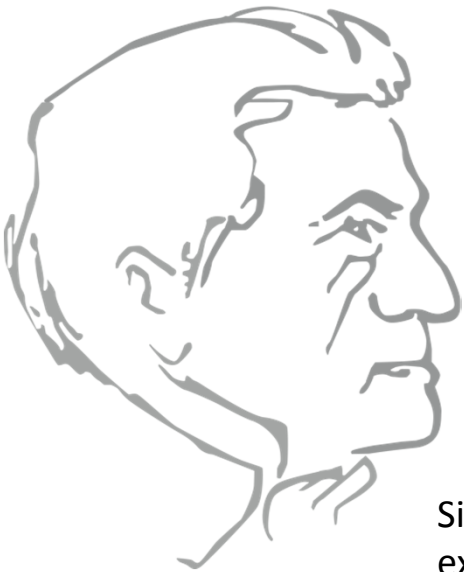
JFZ



STRZELECKI
Metals Limited

STRZELECKI METALS LTD

QUESTIONS



Sir Paul Edmund Strzelecki was a noted Polish nobleman, explorer and geologist who explored the south east part of Australia from 1839 to 1843.