

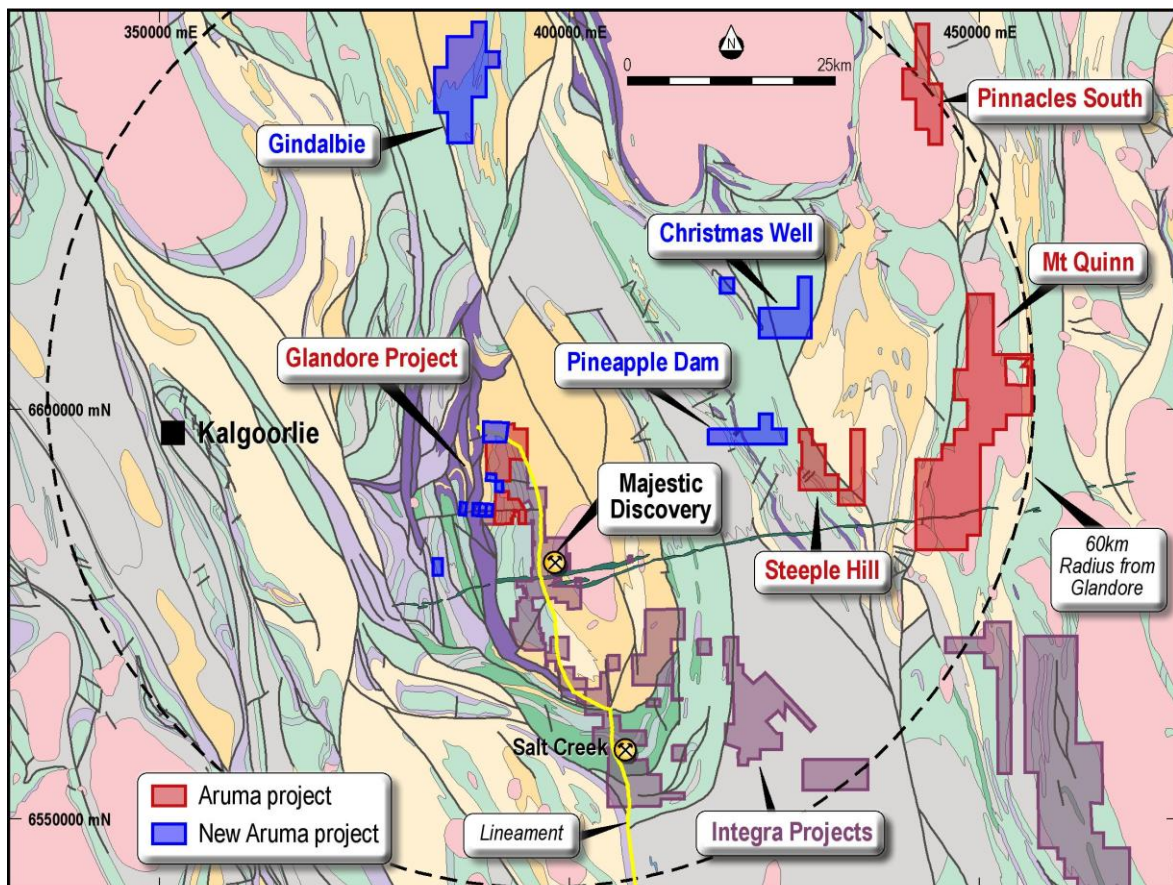


## **OPERATIONS UPDATE: GLANDORE AND REGIONAL PROJECTS**

Aruma Resources Limited (**ASX:AAJ**) is pleased to provide the following operations update from its flagship Glandore Gold Project, that lies approximately 40 km east of the prolific gold producing region of Kalgoorlie-Boulder in the eastern goldfields.

### **HIGHLIGHTS**

- **Gravity Survey completed at North Glandore**
- **Shear-Strain Modelling at Glandore scheduled with CSIRO in Q2 2011**
- **PoW approved for Steeple Hill Drilling**
- **PoWs for Pinnacles South, Laverton East and Jundee South pending**
- **Gindalbie Lease granted and data assembly started**



**Figure 1** Aruma's landholding east of Kalgoorlie showing the target lineament at Glandore.

## GLANDORE PROJECT

Further to its announcement on 22 March 2011, the Company can confirm the drilling results at the Glandore Project have indicated the presence of a strong gold mineralising system and the gravity survey will be used to define targets under shallow cover. This covered area has not been explored to date and the magnetic and gravity survey data will be used by CSIRO to model the fluid flow in the area to generate targets for subsequent drilling. This modelling has been successful in generating targets in the east Kalgoorlie area that have yielded good gold grades in similar structural environments.

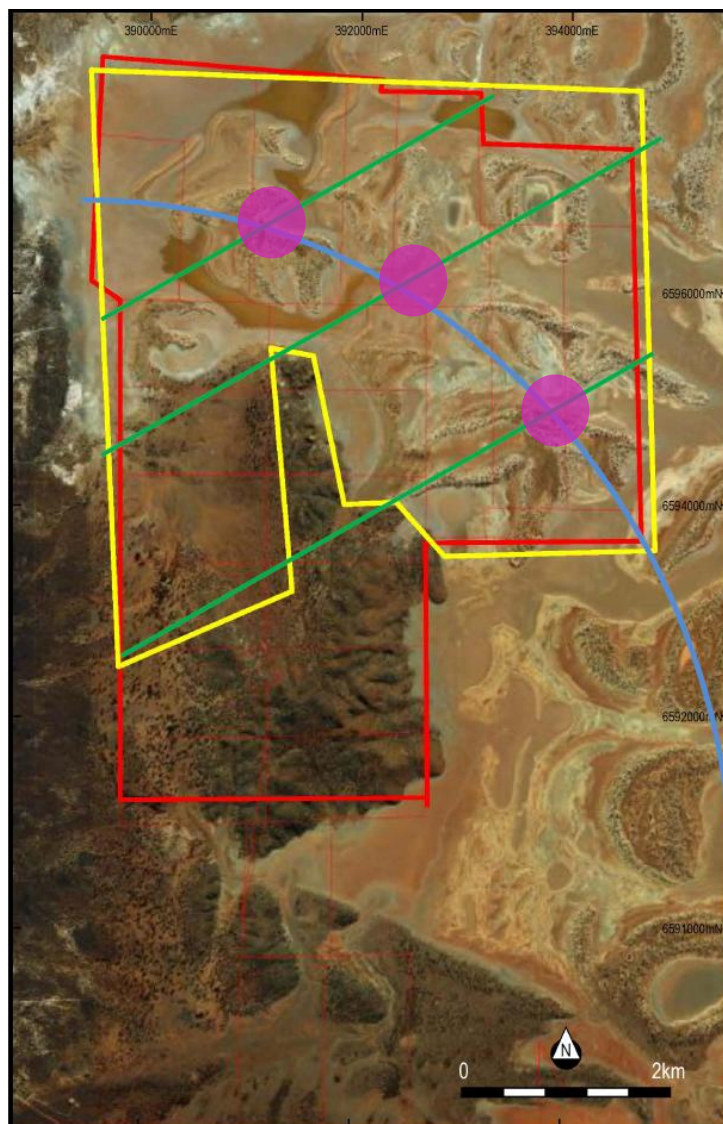


Figure 2 North Glandore showing target generation area (Yellow) and possible structures.



## OPERATIONS UPDATE: GLANDORE AND REGIONAL PROJECTS

---

The image above shows the area of the gravity survey, with the Salt Creek-Majestic Lineament (in Blue) and the major cross faults (in Green). This Lineament is the targets for mineralisation where it intersects the mineralising cross structures (Pink Dots).

The Glandore area has a gold mineralising system of significant grade and remains at the early stages of exploration evaluation. The Company is progressing its strategic focus on proving mineralisation to develop Glandore as regional gold production hub, with regional satellites at Gindalbie and the Kurnalpi South Tenements.

### REGIONAL PROJECTS

The approval of the Program of Works at Steeple Hill will allow the drilling to commence after the heritage survey is completed and the granting of the surrounding exploration licences will give an area of some 460 km<sup>2</sup> in the areas within a 60 Km radius of Glandore (shown in Figure 1). To this end a small exploration licence has been granted at Gindalbie allowing exploration to commence this quarter.

The Programs of Work over Laverton East and Jundee South are pending approval in the coming weeks, giving a steady work program development into the next financial year.

The Company looks forward to reporting further progress as more information becomes available.

For further information please contact:

**Peter Schwann**  
**Managing Director**  
**Aruma Resources Limited**  
**Ph: +61 8 9481 2425**  
**Mobile: +61 (0) 417 946 370**  
**info@arumaresources.com**

**Annette Ellis/Karen Oswald**  
**Purple Communications**  
**Ph: +61 8 6314 6300**

*The information in this release that relates to Exploration Results, Mineral Resources or Ore Reserves is based on information compiled by Peter Schwann who is a Fellow of the Australasian Institute of Mining and Metallurgy and Chartered Professional (Geology). Mr P Schwann is an employee of the Company.*

*Mr P Schwann has sufficient relevant experience to qualify as a Competent Person as defined in the JORC Code (2004) and consents to the inclusion of this information in the form and context in which it appears.*

---

### Aruma Resources Limited

ABN 77 141 335 364 ASX: AAJ  
24 Colin Street, West Perth WA 6005, Australia | PO Box 2803, West Perth WA 6872, Australia  
T +61 8 9481 2425 | F +61 8 9481 1756 | W [www.arumaresources.com](http://www.arumaresources.com)