



ARUMA RESOURCES DRILLING IMMINENT AND FLUID MODELLING UNDERWAY

Highlights

- **CSIRO commences Fluid Flow Study at Glandore**
- **Steeple Hill heritage clearance starts next week**
- **6000m Laverton East Drilling program delayed due to rain**
- **New Mining Leases applied for at Darlot East and Gindalbie**
- **Hyvista programs on Gindalbie, Laverton East and Kurnalpi South in June**
- **3 Mining Leases Granted at Glandore over the Central Portion**

The Board of Aruma Resources Limited (ASX:AAJ) (“Aruma” or “the Company”) are pleased to announce that CSIRO will commence a Fluid Flow study at its flagship Glandore Project. The study will assist in identifying potential for the presence of a gold mineralised system using the data from the recent Gravity Survey, detailed magnetics, geochemical and structural modelling and geology from both drilling and mapping

This modelling has been successful in generating targets in the east Kalgoorlie area that have yielded major new deposits in similar structural environments i.e. Integra Mining’s (ASX: IGR) Salt Creek and Majestic Deposits.

The drilling to date at the Glandore Project has shown areas being either outcrop or gold soil anomalies, leaving considerably unexplored potential on the Project both to the north and south of the drilled areas.

The two matching figures below show the Aruma Leases on the Landsat Image with structures on the left and comparable unexplored areas in the shaded areas on Geology to the Right.

Native Title Agreements and Mining Leases are now finalised at the Glandore Project which is being prepared for a major evaluation drilling Phase. One of the native title parties at Glandore have been issued with 125,000 Aruma shares and the Company welcomes them as stakeholders in the area.

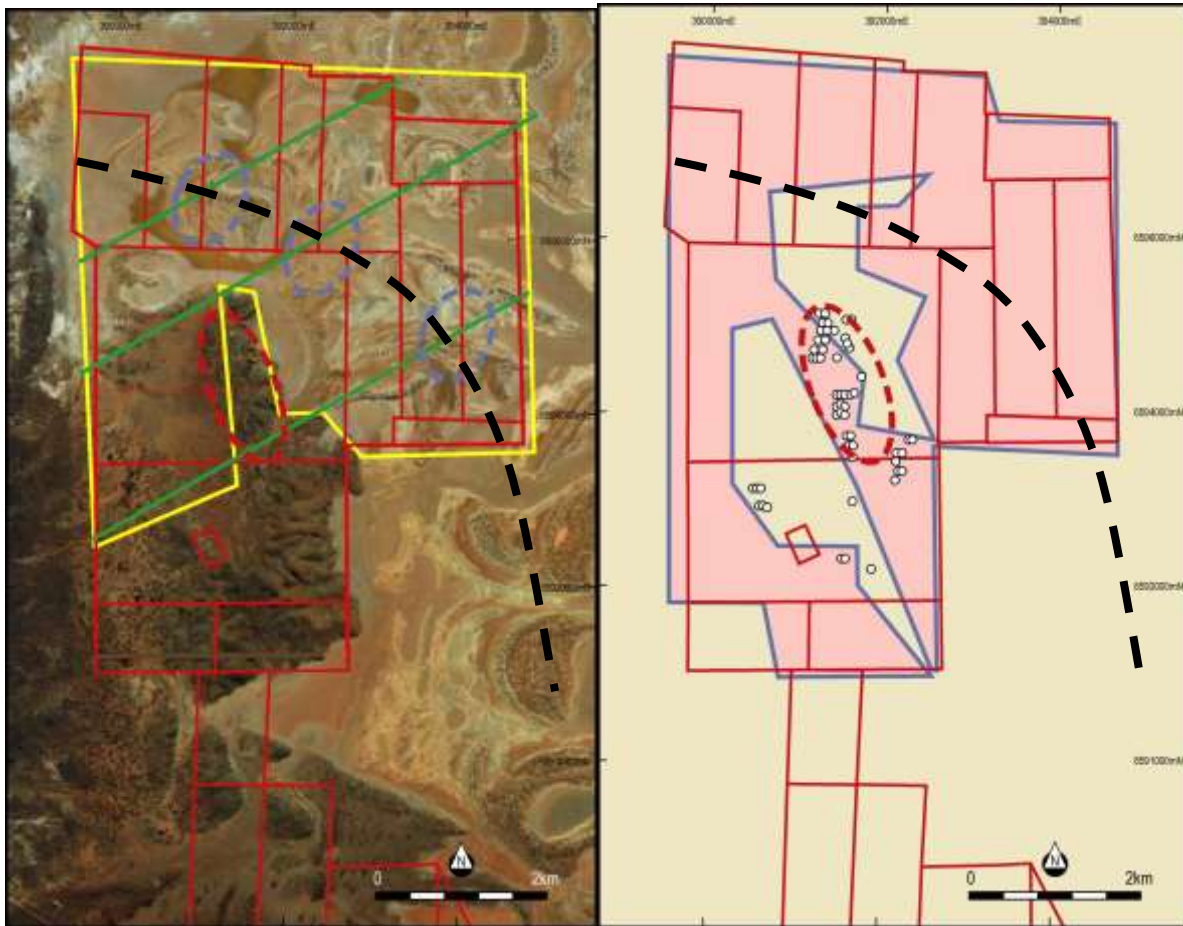


Figure 1 Glandore Project showing Gravity Survey/Fluid Study area (in yellow outline) and the untested nature with targets under the salt lake (shaded pink) with Majestic structure extension as black dashed line

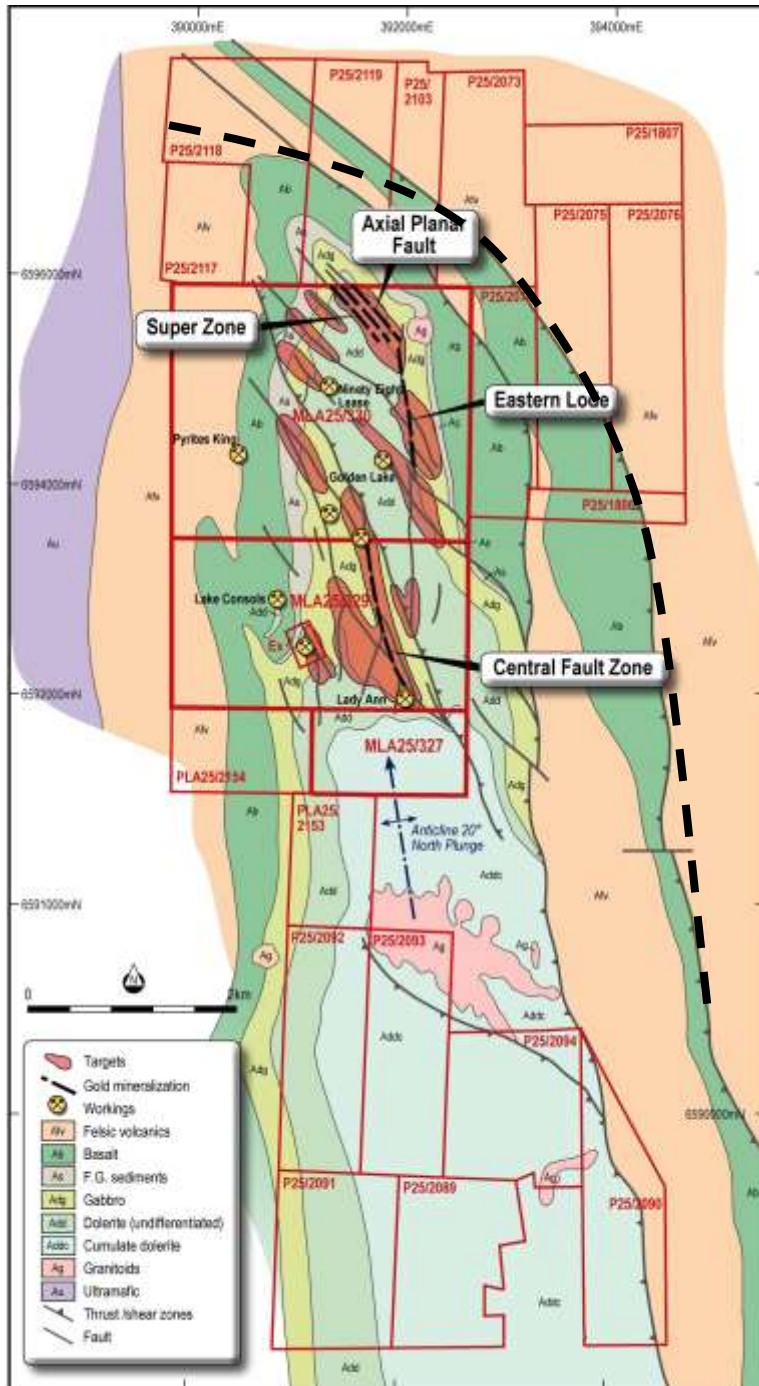


Figure 2 Glandore Lease outline showing Geology and possible Majestic structure extension.

The Glandore area is shaping up as a gold mineralised system of significant scale and now demands a new and total evaluation. The Company is on line with its strategic focus on proving mineralisation to develop Glandore as regional gold production hub, with regional satellites.



ARUMA RESOURCES DRILLING IMMINENT AND FLUID MODELLING UNDERWAY

For further information please contact:

Peter Schwann
Managing Director
Aruma Resources Limited
Ph: +61 8 9481 2425, Mobile: +61 417 946 370
info@arumaresources.com

Media enquires:

Annette Ellis/Karen Oswald
Purple Communications
Ph: +61 8 6314 6300

The information in this release that relates to Exploration Results, Mineral Resources or Ore Reserves is based on information compiled by Peter Schwann who is a Fellow of the Australasian Institute of Mining and Metallurgy and Chartered Professional (Geology). Mr Schwann is an employee of the Company.

Mr Schwann has sufficient relevant experience to qualify as a Competent Person as defined in the JORC Code (2004) and consents to the inclusion of this information in the form and context in which it appears.

Aruma Resources Limited

ABN 77 141 335 364 ASX: AAJ
24 Colin Street, West Perth WA 6005, Australia | PO Box 2803, West Perth WA 6872, Australia
T +61 8 9481 2425 | F +61 8 9481 1756 | W www.arumaresources.com