



**QUARTERLY ACTIVITY REPORT
FOR THE QUARTER ENDED 31 DECEMBER 2010**

Highlights

- **Glandore Project**
 - **First Programme of 48 holes completed in October**
 - **Previously reported intersection of 11m at 2.32 g/t from surface**
 - **33 of 48 holes intersected anomalous gold mineralisation**
 - **Follow up drilling of 26 holes completed in December**
 - **Central Fault Zone gold trend confirmed by Hyvista over 3km**
 - **4 PLs applied for adjacent to Glandore Area**
- **Hyvista**
 - **Hyvista Report received for Glandore and South Kurnalpi**
 - **Multiple Anomalous alteration zones mapped**
- **Kurnalpi South Project**
 - **Good Hyvista anomalies apparent on all leases**
 - **Further ELs applied for near Steeple Hill**

Summary

ARUMA RESOURCES LIMITED (ASX: AAJ) ("Aruma" the "Company") is a gold exploration company which was listed on the ASX on 23rd July 2010. Aruma is a focussed West Australian based gold exploration company which has five prospective project areas within the Eastern Goldfields region of Western Australia. Aruma's tenement package now totals approximately 613km² (inclusive of several tenements which are still under application) and all are located on regional structures in the Norseman - Wiluna Greenstone Belt which contains most of Australia's lode-type gold deposits.

Two programmes of reverse circulation drilling were completed during the quarter at the **Glandore Project**. This drilling was conducted to examine the potential under soil anomalies as well as to investigate a large intersection on the Central Fault Zone.

In addition four new prospecting licences were pegged to extend the lease coverage to the south west. This area is considered prospective as the prospective stratigraphy continues in the area.



QUARTERLY ACTIVITY REPORT
FOR THE QUARTER ENDED 31 DECEMBER 2010

The series of small Exploration Licences over prospective ground at Carmella Dam (the **Gindalbie Project**) were negotiated and increased in area during the Quarter. These are now consolidated as an Aruma tenement and will be explored after granting.

Several new Exploration Licences were applied for at the **Kurnalpi South Project** and all the initial lease areas are covered with the Hyvista Mineral Mapping remote sensing method. This has been processed and will be interpreted to define prospective target areas.

During the coming quarter the Company intends to:

- complete and interpret results from the drilling program at Glandore;
- complete the Hyvista interpretation over all the leases;
- submit PoW's for all the anomalous areas identified; and.
- commence geochemical appraisal of regional leases.
- Design a follow up drilling program at Glandore

The Company will remain vigilant for projects that have potential to add value to the Company.

Glandore Leases Extended, Evaluated and Drilling Completed

The flagship Glandore Project was evaluated by two RC drilling programmes for 74 holes totalling 5920m to ascertain trends and evaluate the soil sampling undertaken by previous exploration. The subsequent drill defined anomalies were drilled in the latest program and only 5 initial holes were assayed by the end of the quarter. Of these 4 were anomalous and to date included AGR50 which intersected 1m at 1.07g/t from 15m and is located south of AGR28. The results are tabulated in Table 1 below.

Figure 1 below shows the high proportion of holes that encountered anomalous gold mineralisation in Red (>1.0 g/t) and Yellow (>0.1 g/t). The Hyvista and ground mapping has confirmed the Central Fault Zone (also referred to as the Eastern Shear, but too likely confused with The East Lode) to be of interest and has numerous small pits along its 3km length.

Hole	Easting*	Northing*	Azimuth	Dip	From	To	Intercept	Au g/t #
AGR14	391482	6595002	270	-60	37	38	1	1.04
AGR23	391647	6594358	270	-60	77	78	1	1.07
AGR28	391664	6594194	270	-60	0	11	11	2.32
AGR28	391664	6594194	270	-60	13	15	2	1.01
AGR28	391664	6594194	270	-60	20	21	1	1.27
AGR28	391664	6594194	270	-60	22	23	1	1.08
AGR28	391664	6594194	270	-60	33	36	3	1.56
AGR28	391664	6594194	270	-60	38	39	1	1.23
AGR50	391639	6594200	60	90	15	16	1	1.07

*GDA 94

#Assay By AR25

Table 1 Assay Results > 1.0 g/t au received in the Quarter

Aruma Resources Limited

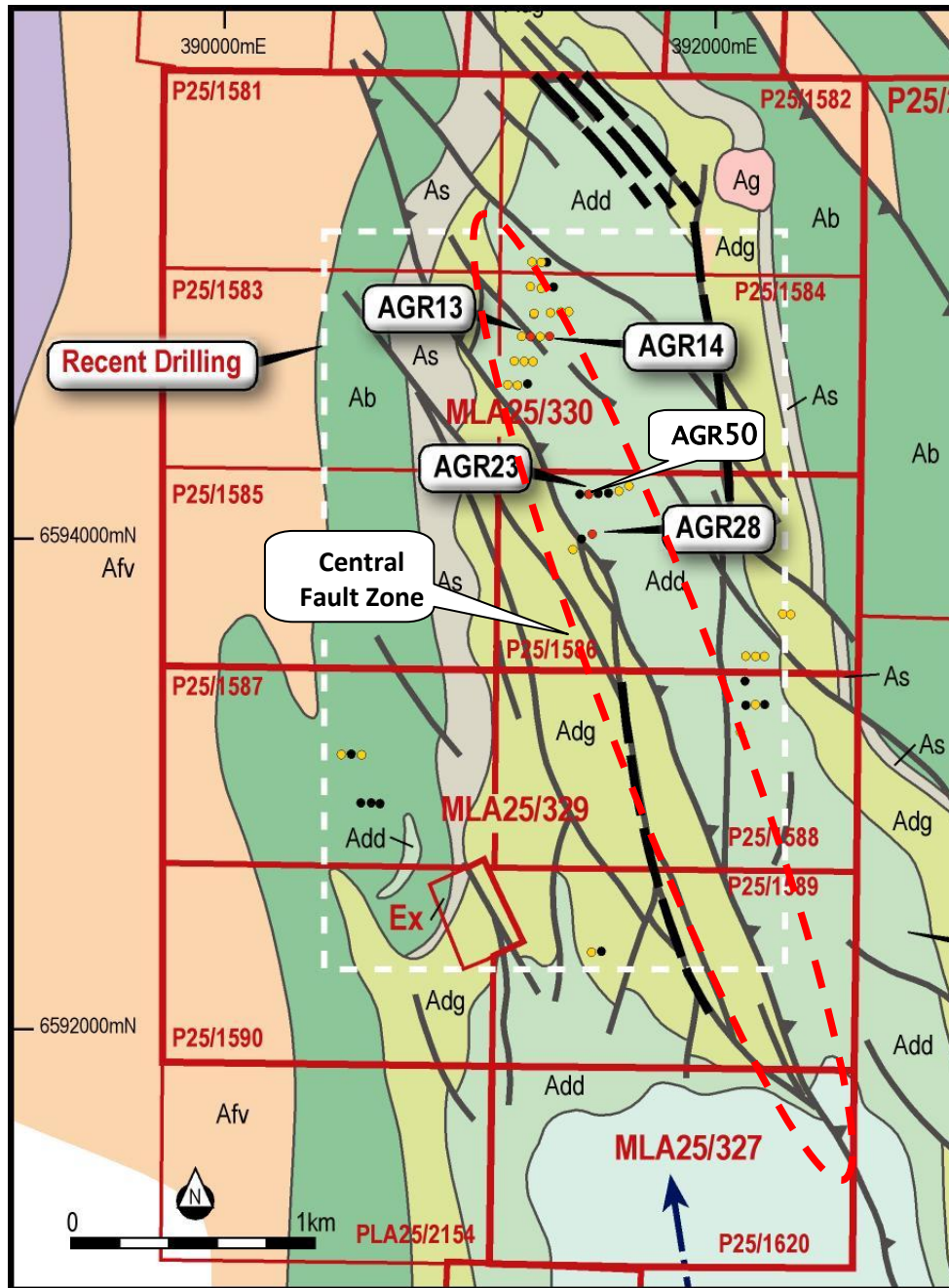


Figure 1 Drilling results (Yellow >0.1g/t and Red >1g/t). The Central Fault Zone is shown in the Red ellipse.

Results from the second RC Program will be released in the next quarter as they become available.



Eastern Goldfields Projects Progressing

Aruma has over 613 km² of prospective ground located in the Eastern Goldfields with several project areas as shown in Figure 2.

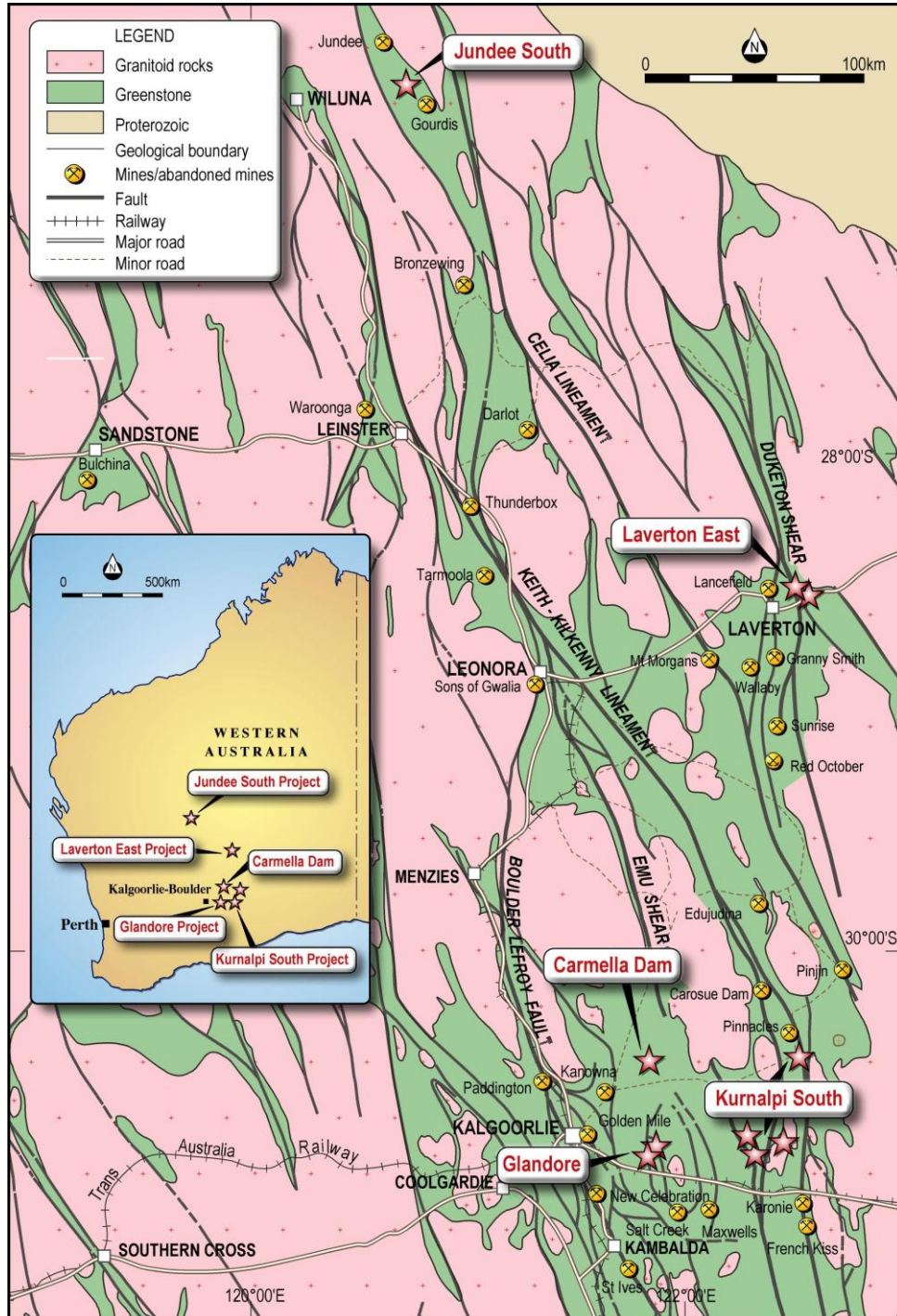


Figure 2 Aruma Projects in the Norseman-Wiluna Greenstone Belt

Aruma Resources Limited



QUARTERLY ACTIVITY REPORT
FOR THE QUARTER ENDED 31 DECEMBER 2010

The innovative Hyvista Mineral Mapping method was been used on all of the existing Projects and the reported areas are shown in Figure 3. Initial studies have identified the alteration associated with gold in previously explored areas at Glandore, with similar alteration evident in all the areas studied.

This interpretation and report was completed for the Glandore and Kurnalpi South areas during the quarter. The data interpretation for the remaining areas and site selection will happen early in the coming Quarter and evaluated by comparison with existing data and ground inspection. This was underway at the time of writing this report.

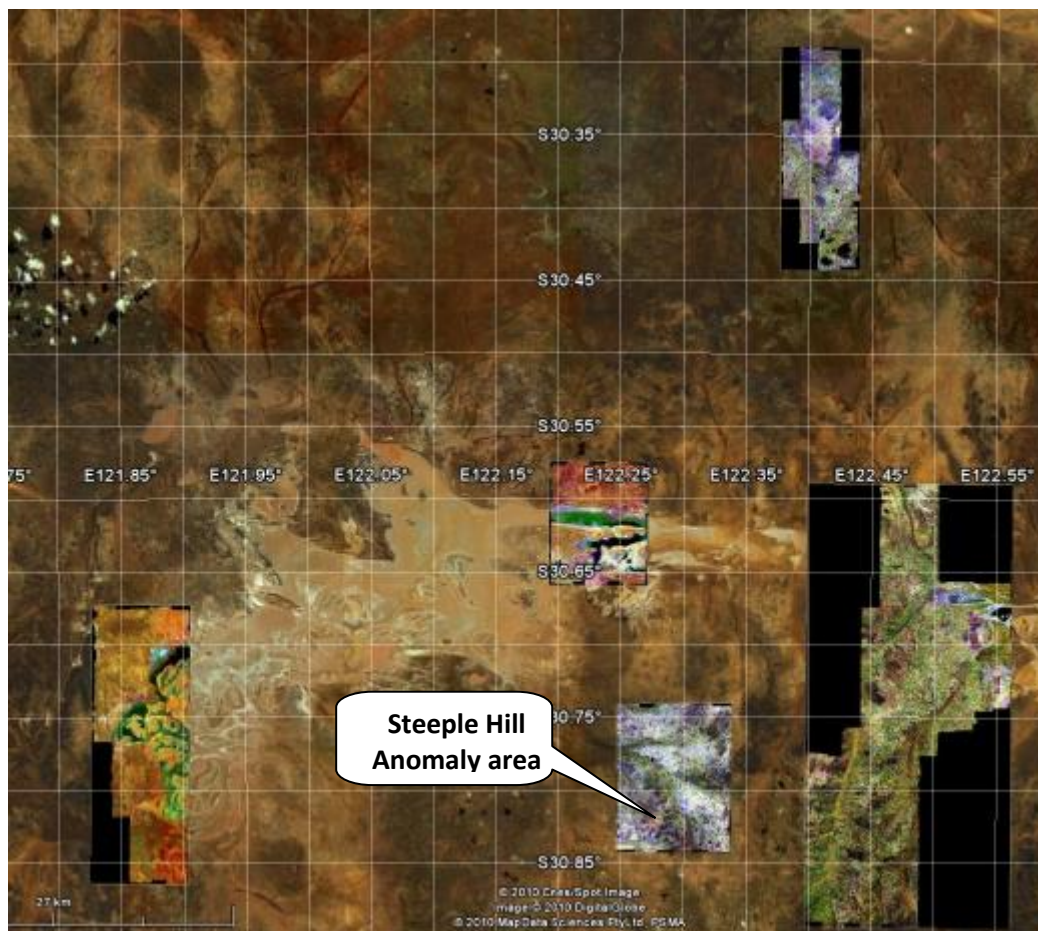


Figure 3: Aruma Kalgoorlie Survey Areas locations on Landsat.

Strong surface Goethite-Mica-Carbonate anomalies have been noted and targets are being identified and ranked by the Hyvista Corporation with input from the Aruma Exploration team. These will be investigated by soil and auger sampling in the next quarter.

Figure 4 below demonstrates the mineral occurrence maps that are generated from Hyvista. The Chlorite Scapolite alteration is easily visible in the Steeple Hill Area shown above.

Aruma Resources Limited

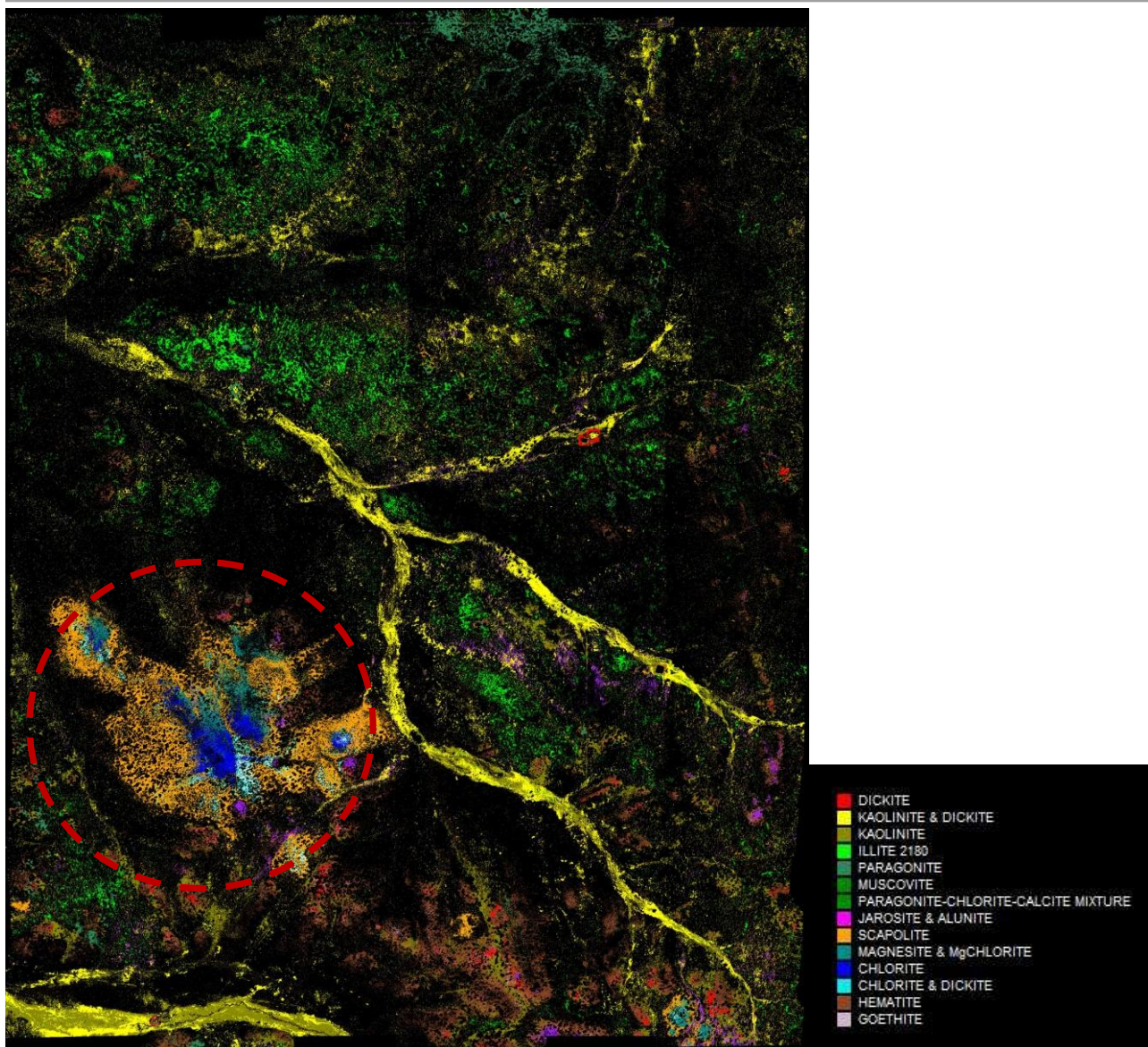


Figure 4: Steeple Hill Hyvista Survey anomalism (Figure 3) in Red circle and mineral codes.

For further information please contact:

Peter Schwann

Managing Director

Aruma Resources Limited

Telephone: +61 8 9481 2425

info@arumaresources.com

The information in this release that relates to Exploration Results, Mineral Resources or Ore Reserves is based on information compiled by Peter Schwann who is a Fellow of the Australasian Institute of Mining and Metallurgy and Chartered Professional (Geology). Mr Schwann is an employee of the Company. Mr Schwann has sufficient relevant experience to qualify as a Competent Person as defined in the JORC Code (2004) and consents to the inclusion of this information in the form and context in which it appears.

Aruma Resources Limited

ABN 77 141 335 364 ASX: AAJ

24 Colin Street, West Perth WA 6005, Australia | PO Box 2803, West Perth WA 6872, Australia

T +61 8 9481 2425 | F +61 8 9481 1756 | W www.arumaresources.com



**QUARTERLY ACTIVITY REPORT
FOR THE QUARTER ENDED 31 DECEMBER 2010**

Background

Aruma is a focussed West Australian based gold exploration company which has prospective project areas within the Eastern Goldfields region of Western Australia. Inclusive of several tenements which are still under application, Aruma's tenement package now totals approximately 613km².

The flagship Glandore Project is approximately 40km east of Kalgoorlie-Boulder. Previous exploration of the Glandore Project, has identified several advanced exploration areas and some twenty under-explored prospective exploration targets.

The Kurnalpi South Project lies approximately 100km to the east of Kalgoorlie-Boulder and comprises several gold exploration prospects including Lake Yindarlgooda, Christmas Well, Pinnacles South, Mt Quin and Steeple Hill, within a minimally explored area of a greenstone belt that hosts several major mines.

The Laverton East Project is located approximately 20km east of Laverton. Previous exploration of the area includes relatively shallow RAB drilling over much of the tenement and reconnaissance rock chip sampling returned several gold assays of greater than 0.2 g/t. An EL over 80 km² has been applied for to the north of the current leases at Paul Well in the prospective stratigraphy.

The Jundee South Project is approximately 50km to the east of Wiluna within the Yandal Greenstone belt. The Gourdis alluvial deposits are thought to have been derived from the west, near or on the Aruma Lease.

Each of the project areas can be readily accessed from the regional towns of Kalgoorlie-Boulder, Laverton or Wiluna.