



ASX ANNOUNCEMENT / MEDIA RELEASE

ASX:ABU

3<sup>rd</sup> February 2011

## *West Twin Bonanza targeting brings total number of targets to 30 at the Twin Bonanza Gold Camp*

ABM Resources NL ("ABM" or "The Company") is pleased to announce that it has compiled and reviewed further historic data from the Twin Bonanza Gold Camp located in the Northern Territory and as a result has prioritised a total of 30 targets for further work. Twelve targets from the east-side of the Twin Bonanza Gold Camp were presented on 31<sup>st</sup> January 2011. This release presents additional targets on the west-side of the Twin Bonanza Gold Camp.

### Highlights:

In addition to the Buccaneer Porphyry Gold Prospect and the Old Pirate High Grade Gold Prospect, where the Company announced significant discoveries in 2010; and the East Twin Bonanza area, where details on a further 12 targets were recently presented, ABM has identified and prioritised a further 16 regional targets on the western side of the 40kmx40km Twin Bonanza Gold Camp including:

- **Bandit Prospect:** 2km ridge with scattered surface anomalism and veins including rock samples up to 12.99g/t gold.
- **Corsair Prospect:** 3.5km by 1.2km gold anomaly on the Old Pirate trend with up to 3.55g/t gold in shallow drilling.
- **Black Cat Prospect:** 1km by 0.5km gold anomaly with up to 6.37g/t gold in shallow drilling.
- **Marauder Prospect:** 460m by 150m anomaly with up to 2.54g/t gold in trench samples and 8.08g/t gold in rock samples.
- **Landlubber Prospect:** 2.4km by 0.57km arsenic anomaly parallel and west of the Old Pirate Trend.
- **Extensional drilling at the Buccaneer and Old Pirate Discoveries** including follow up on the previously reported 81m grading 2.03g/t gold is being prioritised along with drilling on the other prospects presented here. This drilling is fully funded and included in this year's Exploration Program.

---

ABM RESOURCES NL

Level 1, 141 Broadway Nedlands Western Australia 6009 . [www.abmresources.com.au](http://www.abmresources.com.au)  
Email: [admin@abmresources.com.au](mailto:admin@abmresources.com.au) . Tel: +61 8 9423 9777 . Fax: +61 8 9423 9733  
ABN: 58 009 127 020

Darren Holden, Managing Director of ABM Resources said, "The Twin Bonanza Gold Camp is perfectly located for multiple discoveries with its excellent geology, major ore bearing structures and widespread anomalism. The extent of gold and associated element anomalism is outstanding throughout the whole Twin Bonanza Gold Camp. With a total of 30 targets now identified and prioritised, including the discoveries of the Old Pirate High Grade Gold Prospect and the Buccaneer Porphyry Gold Prospect, we look forward to aggressively drilling throughout 2011 to bring the Twin Bonanza Gold Camp to the forefront of the Australian gold exploration industry."

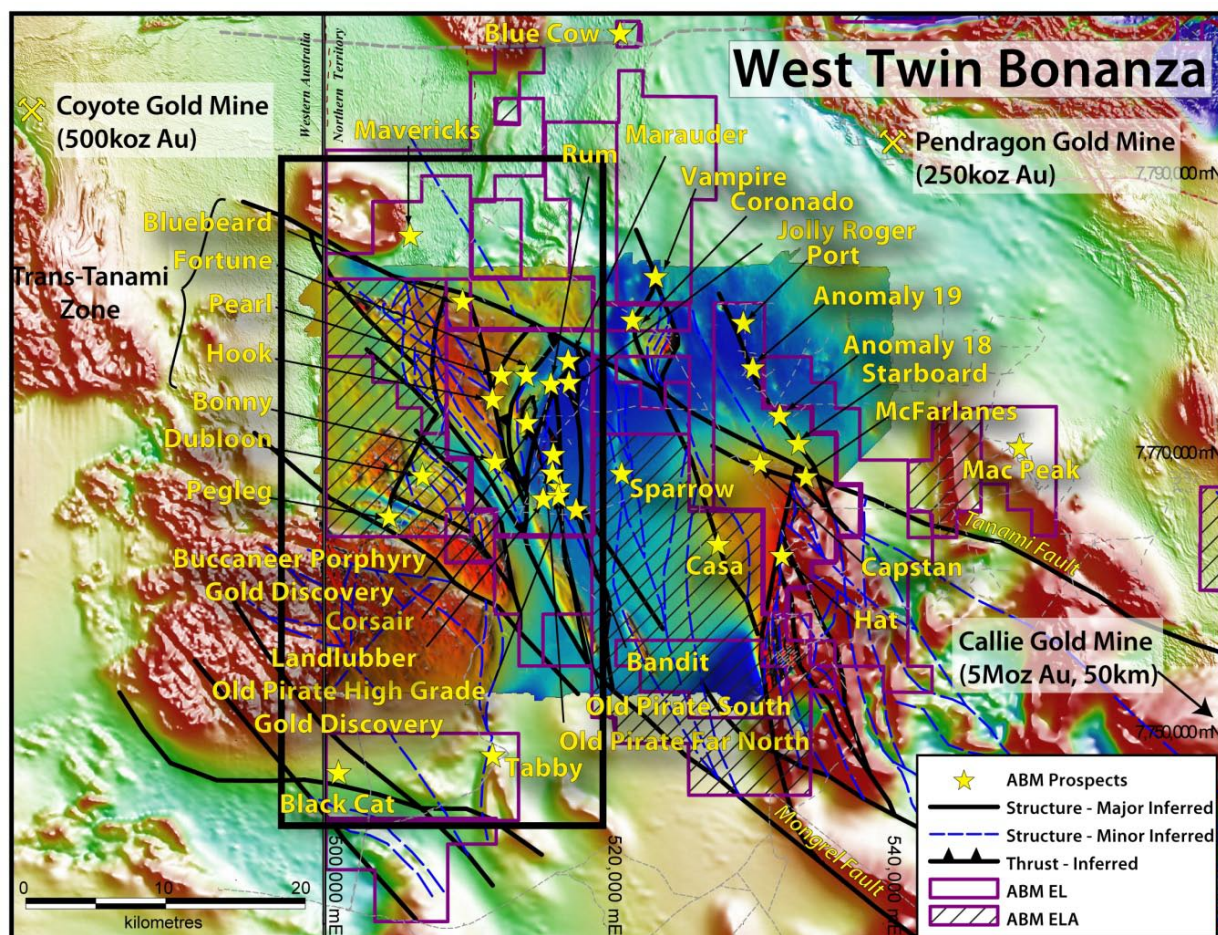


Figure 1. Prospect map of the Twin Bonanza Gold Camp overlain on aeromagnetic data

### Twin Bonanza Gold Camp Targeting

During 2010 ABM successfully consolidated a regional land position consisting of 1,164 square kilometres of exploration licenses and 515 square kilometres of exploration license applications over a 40km by 40km area which the Company collectively calls the "Twin Bonanza Gold Camp".

The Company has previously announced drill results constituting discoveries at the **Buccaneer Porphyry Gold Prospect** with results such as 202m grading 1.0g/t gold; 67m grading 2.07g/t and 81m grading 2.03g/t gold and the **Old Pirate High Grade Gold Prospect** with 43m grading 7.0g/t gold and 5m grading 274g/t gold (refer to releases dated 13/1/11, 18/10/10, 13/09/10, 27/07/10 and 15/11/10 for further details).

The Twin Bonanza Gold Camp spans the Trans-Tanami Structure – a tectonic scale geological feature more than 600km long that hosts several gold mines including Newmont's multi-million ounce high grade Callie gold mine.

## *Twin Bonanza Central / West Gold Prospects*

### *Buccaneer Porphyry Gold Prospect Northern Extensions*

The Buccaneer Porphyry Gold Prospect is open in several directions. ABM reported many significant intersections in 2010 with vertical extent confirmed to greater than 300m depth and lateral extents (with varying depth of drilling and grades) of 800m by 500m (refer to releases dated 13/1/11, 13/12/10, 18/10/2010, 22/09/10, 13/09/2010, 31/08/2010, 19/08/2010, 15/06/2010, 03/03/2010 and 01/02/2010 for further details). This footprint represents only 15% of the overall porphyry body and associated geochemical anomaly and ABM intends to test further extents of this project in 2011.

### *Old Pirate High Grade Prospects including Old Pirate South, Old Pirate Far-North and Corsair Prospects*

During 2010, ABM has reported various intersections including **43m grading 7.0g/t gold** and **5m grading 274g/t gold** from the Old Pirate Prospect (refer to releases dated: 15/11/2010, 31/08/2010, 27/07/2010, 12/07/2010, 08/07/2010, 15/06/2010, 03/03/2010 and 02/02/2010). In addition the Old Pirate Far North Prospect yielded 11m grading 3.55g/t gold in a single hole also previously reported.

The Corsair Prospect is located on the same trend as Old Pirate and is a 3.5km by 1.2km gold and arsenic anomaly defined by more than 150 shallow RAB holes testing principally oxide and weathered material, 27 VAC holes and 2 deeper RC holes. The maximum assay intersected at Corsair is 3550ppb gold (**3.55g/t gold**) and the anomaly is largely untested in fresh-rock (Figure 2).

During 2011 the Company plans to test the Old Pirate trend including the Corsair Prospect with up to 10 holes to depths of up to 250m.

### *Bandit and Landlubber Prospects*

The Bandit Prospect is a distinct topographic ridge located parallel to the Old Pirate trend to the east. Quartz veins are observed sporadically along the length of the ridge for 2km by 0.3km. The trend is anomalous in gold, molybdenum, and arsenic with rock samples with a peak value of 12990ppb (**12.99g/t**) gold. Shallow Vacuum and RAB drilling detected gold anomalism between 5 and 20ppb gold.

The Landlubber Prospect is a 2.4km by 0.57km arsenic anomaly (arsenic is commonly associated with gold) located 500m to the west of the Old Pirate Prospect. The anomaly is defined by 190 shallow holes including 154 vacuum holes to an average depth of 3.7m and 36 RAB holes to an average depth of 48m. Arsenic values range up to 1050ppm and maximum gold values in drilling is 1.2g/t gold.

During 2011 the Company intends to do further mapping and sampling including multi-element geochemistry to better establish a drill target on the Bandit and Landlubber Prospects.

Refer Figure 2 for further details.



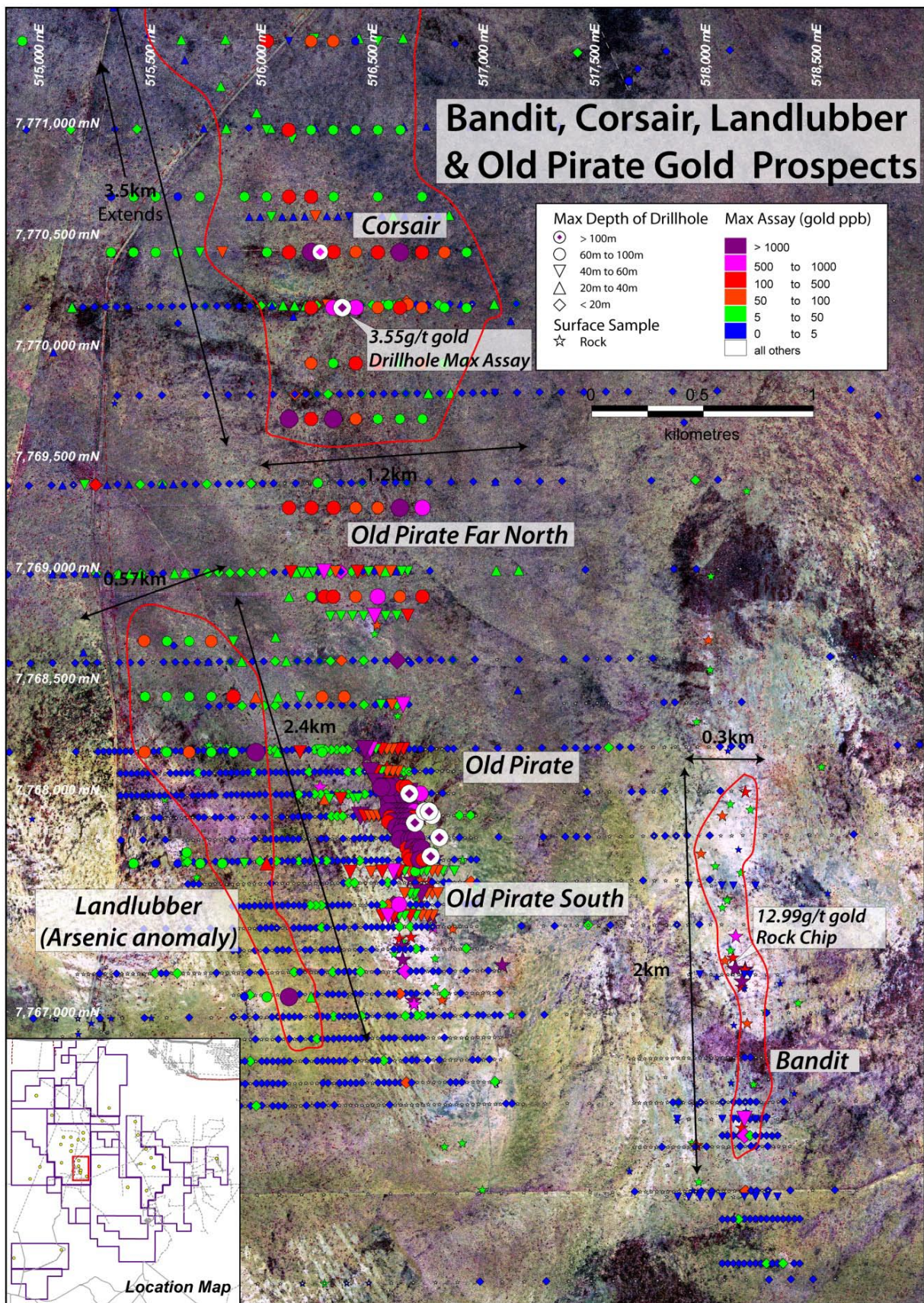


Figure 2. Bandit, Corsair, Landlubber and Old Pirate Prospects - Drill hole locations and maximum assay grades with rock-samples. For details of all drill holes and rock samples refer Appendix 1 and 2. Background = GeoEye Satellite imagery.



### *Rum, Jolly Roger and Marauder Prospects*

The Rum, Jolly Roger and Marauder Prospects are located along an arcuate trend interpreted to be a thrust fault at the north end of the Buccaneer Porphyry Body.

The Marauder Prospect is a 460m by 150m anomaly defined by 4 trenches, 18 RAB holes to an average depth of 42m and 14 shallow vacuum holes to an average depth of 4m with 10 to 50ppb gold anomalism with associated arsenic and antimony. The peak assay is 2540ppb gold (**2.54g/t gold**) in trenching, 2.46g/t gold in RAB drilling and **8.08g/t** gold in a rock sample.

The Rum Prospect is a 2.96km by 0.6km anomaly defined by 30 RAB holes to an average depth of 34m with broad anomalism on the order of 5 to 50ppb gold and peak value of 120ppb gold. The fresh-rock has not been tested on this prospect.

The Jolly Roger Prospect is a 1.15km by 1.2km anomaly located east of the interpreted thrust fault and consists of 47 RAB holes to an average depth of 34m and 4 vacuum holes to an average depth of 7m with 5 to 50ppb gold anomalism and a peak value of 75ppb gold.

During 2011 the Company intends to conduct further reconnaissance work in this area and if warranted will test with 4 to 5 deep holes to 300m.

Refer Figure 3 for further details.

### *Pearl, Fortune, Hook and Bluebeard Prospects (Twin Bonanza West Gold Prospects)*

The Twin Bonanza West Gold prospects are principally located between the Tanami and Mongrel Faults in an area interpreted to be highly magnetic sediments of the Tanami Group (possibly Dead Bullock Formation - the same host at Callie Gold Mine). Several splay structures from geophysics and magnetic intrusions inferred as granite and monzonite porphyry bodies are also present. The area has largely been subject to shallow Vacuum and RAB drilling.

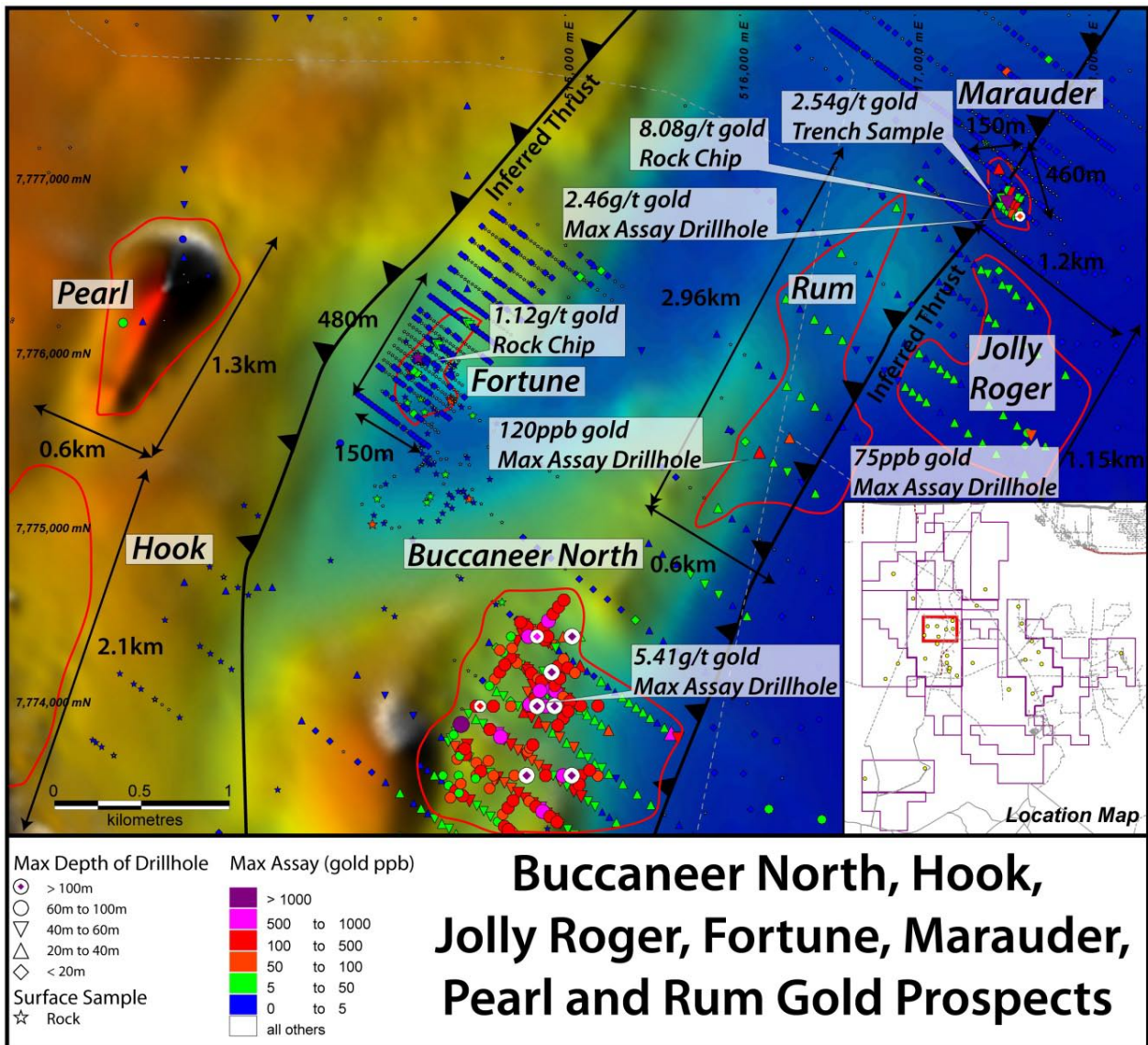
The Pearl Prospect is a low level geochemistry anomaly with 6 RAB holes averaging 39m and grading up to 6ppb gold above an interpreted magnetic monzonite porphyry intrusion 1.3km by 0.6km in dimensions (Figure 3).

The Fortune Prospect consists of rock chips to a maximum 1120ppb gold (1.12g/t), 36 vacuum holes to an average depth of 3m and 17 RAB holes to an average depth of 48m with 5 to 50ppb gold values defining an area of anomalism of 480m by 150m (Figure 3).

The Hook Prospect is a 2.1km by 0.6km distinct magnetic low and look-a-like magnetic geophysical signature to the Buccaneer Porphyry. The Hook Prospect is unsampled with shallow drilling (Figure 3).

The Bluebeard Prospect is defined by two vacuum drill holes 200m apart with 23ppb gold and 60ppb gold as peak values.

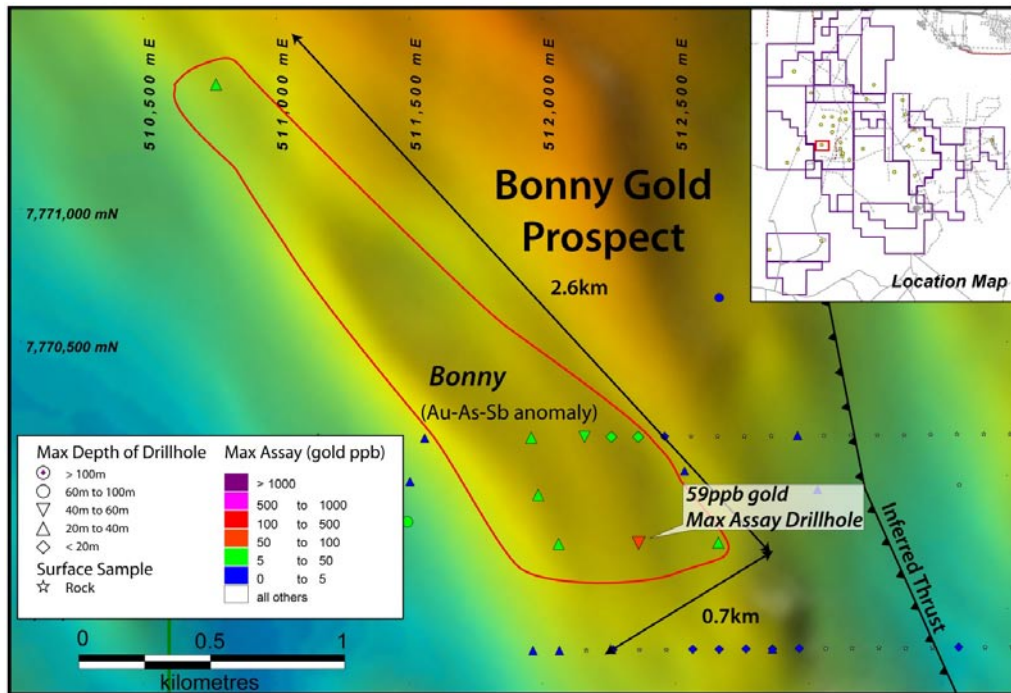
During 2011 the Twin Bonanza West gold prospects will be tested with multi-element geochemistry, shallow drilling and if warranted deeper RC drilling.



**Figure 3. Buccaneer (North), Hook, Jolly Roger, Fortune, Marauder, Pearl and Rum Prospects - Drill hole locations and maximum assay grades with rock-samples. For details of all drill holes and rock samples refer Appendix 1 and 2. Background = aeromagnetic data.**

### Bonny Prospect

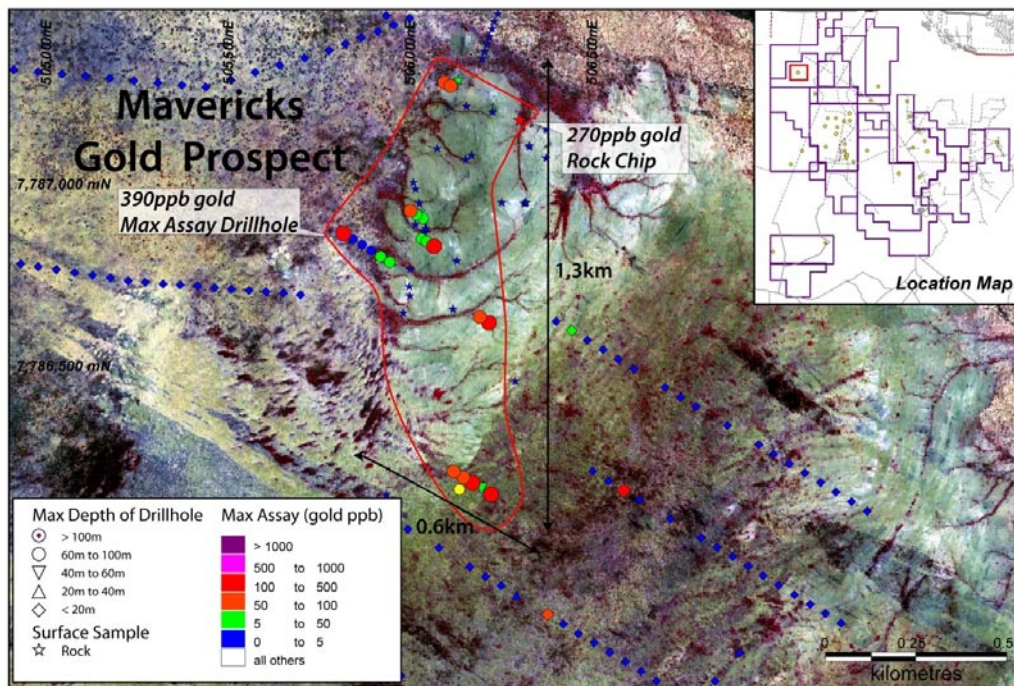
The Bonny Prospect consists of a 2.6km by 0.7 km gold-arsenic-antimony-bismuth anomaly defined by 9 widely spaced RAB holes averaging 35m depth with anomalism on the order of 5 to 50ppb gold and peak values of up to 475ppm arsenic and up to 59ppb gold. The area is located adjacent to the Mongrel Fault and intersected with several fault structures inferred to be dilatational zones.



**Figure 4. Bonny Prospect - Drill hole locations and maximum assay grades. For details of all drill holes and rock samples refer Appendix 1 and 2. Background = aeromagnetic data.**

### Mavericks

The Mavericks Prospect is located in sediments on the margin of a granite body. Approximately 1.3km by 600m of anomalism is defined by 21 RAB holes to an average depth of 64m. The peak value is 390ppb gold.



**Figure 5. Mavericks Prospect - Drill hole locations and maximum assay grades. For details of all drill holes and rock samples refer Appendix 1 and 2. Background = GeoEye satellite imagery.**



## Peg Leg and Dubloon Prospects

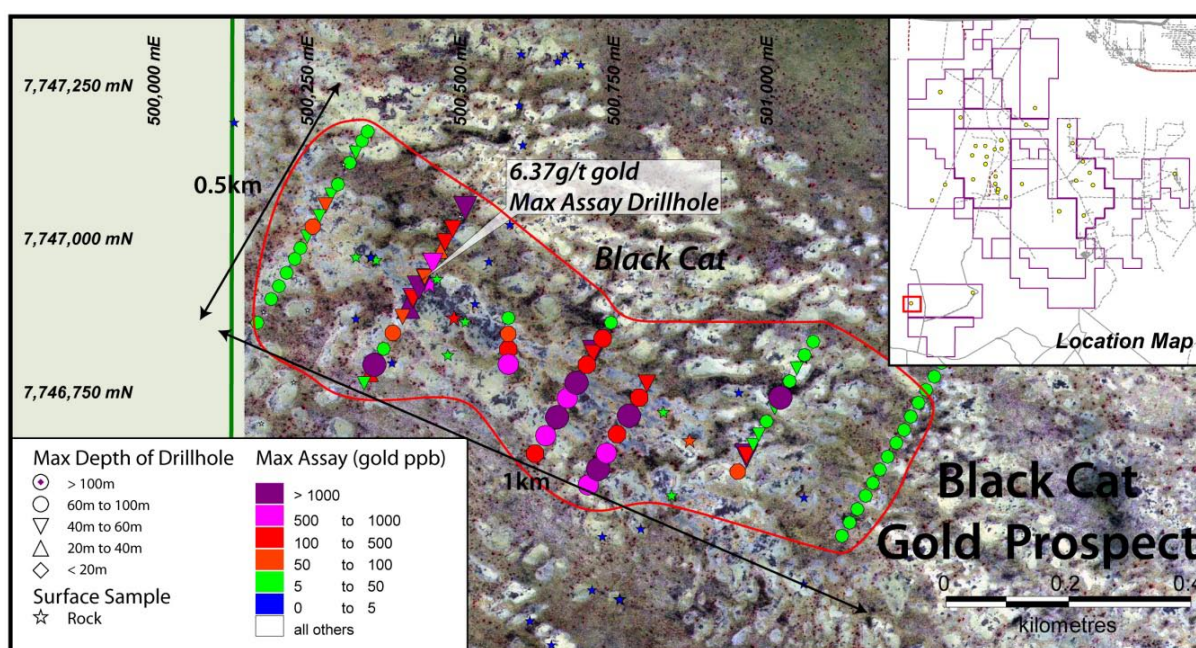
The Peg Leg and Dubloon Prospects are areas of intense deformation and variable magnetism inferred from government magnetic and interpretive maps to be a complex of dolerite dykes and granite intrusions. These Prospects are on an exploration license application and no results are presented here. ABM intends to advanced the exploration license applications to a status of grant during 2011.

## Twin Bonanza South West Gold Prospects (Black Cat and Tabby Cat)

The Black Cat Prospect is defined by 48 RAB and 22 aircore holes to an average depth of 58m over an anomalous area of 1km by 0.5km. The peak assay value is 6370ppb gold (6.37g/t gold).

The Tabby Cat Prospect is a geophysical anomaly consisting of an embayment in gravity data and an oval shaped demagnetised intrusion approximately 3km by 2.49km in size.

Refer to Figure 6 for more detail on previous work at the Black Cat Prospect



**Figure 6. Black Cat Prospect - Drill hole locations and maximum assay grades. For details of all drill holes and rock samples refer Appendix 1 and 2. Background = GeoEye satellite imagery.**

## 2011 Proposed Program

In 2011 the Company proposes to continue to drill extensions of the Buccaneer Porphyry Bulk Tonnage Gold Discovery and the Old Pirate High Grade Gold Discovery. The Company is also proposing a bulk-sample of between 2000 and 4000 tonnes of high-grade vein material from the Old Pirate Prospect.

Furthermore the Company plans to conduct a 15000 metre drill program to test as many of the 30 targets at the Twin Bonanza Gold Camp as is warranted by existing data or follow-up field reconnaissance. Further reconnaissance work and shallow geochemistry drilling such as RAB drilling will also be carried out.

In addition, ABM plans to drill test other regional targets in the Company's extensive portfolio including the Tekapo iron oxide-copper-gold (IOCG) prospect in the Lake Mackay Project area and the Kroda Gold System in the Barrow Creek Regional Project area.



## About ABM Resources NL

ABM Resources is a mineral exploration company focused on gold discovery in the Tanami-Arunta regions of the Northern Territory, Australia. The Company is one of the largest exploration license / license application holders in Australia. The Company has an aggressive exploration approach and is well funded for multiple target testing with multiple rigs in 2011.

Signed



Darren Holden – Managing Director

### **Competent Persons Statement**

*Information in this document has been reviewed and validated by Mr Darren Holden who is a Member of The Australasian Institute of Mining and Metallurgy. The information contains a review and analysis of exploration data provided to ABM Resources by Newmont Asia Pacific and Tanami Gold NL. Whilst this data has been validated and checked by ABM Resources it should be considered as "historic" information and samples may not be available for re-checking. Mr Holden is a full time employee of ABM Resources NL and has sufficient experience which is relevant to the style of mineralisation and type of deposit under consideration and to the activity which he is undertaking to qualify as a Competent Person as defined in the 2004 Edition of the "Australasian Code for Reporting Exploration Results, Mineral Resources and Ore Reserves". Mr Holden consents to the inclusion in the documents of the matters based on this information in the form and context in which it appears.*

### For Further Information Please Contact

Jutta Zimmermann  
CFO / Company Secretary  
+61 8 9423 9777

Darren Holden  
Managing Director  
+61 8 9423 9777

Berdine Mastaglia  
Investor Relations Manager  
+61 8 9423 977

Appendix 1.

Table 1. Maximum Gold Assay in Shallow Geochemistry Drilling Result

Prospect	Hole ID	Hole Type	Easting (m)	Northing (m)	Azimuth (degrees)	Inclination (degrees)	Depth From (m)	Depth To (m)	Maximum Au ppm (g/t)	Maximum Au ppb	Hole Depth (m)
Bandit	WRB0553	RAB	518183.60	7766515.23	0	-60	1	2	0.610	610	45
Bandit	WRB0564	RAB	518183.24	7767164.82	0	-60	2	3	0.005	5	45
Bandit	WRB0565	RAB	518209.36	7767164.80	0	-60	3	3	0.005	5	45
Bandit	WRB0573	RAB	518083.36	7767565.53	0	-60	3	3	0.002	2	45
Bandit	WRB0543	RAB	518183.23	7766165.54	0	-60	3	4	0.002	2	45
Bandit	WRB0574	RAB	518133.51	7767565.48	0	-60	1	1	0.001	1	45
Bandit	WRB0572	RAB	518034.25	7767565.58	0	-60	9	1	-0.001	-1	45
Bandit	WRB0561	RAB	518109.06	7767164.90	0	-60	4	4	-0.001	-1	45
Bandit	WRB0562	RAB	518133.09	7767164.88	0	-60	4	4	-0.001	-1	45
Bandit	WRB0563	RAB	518159.21	7767164.85	0	-60	4	5	-0.001	-1	51
Bandit	OPV2285	VAC	518183.52	7766439.98	0	-90	0	1	0.924	924	1.5
Bandit	OPV1745	VAC	518189.53	7766192.09	0	0	1	1	0.053	53	1.6
Bandit	OPV2296	VAC	518183.60	7766515.23	0	-90	0	2	0.011	11	4.5
Bandit	OPV2286	VAC	518208.60	7766439.96	0	-90	0	2	0.009	9	2.7
Bandit	OPV2297	VAC	518158.53	7766515.26	0	-90	0	2	0.003	3	6.3
Bandit	OPV2295	VAC	518208.68	7766515.21	0	-90	0	2	0.003	3	4.5
Bandit	OPV1884	VAC	518027.17	7767791.34	0	-90	1	1	0.002	2	1.6
Bandit	OPV1746	VAC	518214.60	7766192.06	0	-90	1	1	0.002	2	1.6
Bandit	OPV2276	VAC	518183.13	7766065.94	0	-90	0	2	0.002	2	2.6
Bandit	OPV1855	VAC	518028.01	7767591.04	0	-90	1	1	0.001	1	1.6
Bandit	OPV1798	VAC	518161.74	7766591.61	0	-90	1	1	0.001	1	1.6
Bandit	OPV1759	VAC	518163.62	7766392.42	0	-90	1	1	0.001	1	1.9
Bandit	OPV1816	VAC	518185.98	7766791.89	0	-90	3	3	0.001	1	3.4
Bandit	OPV0410	VAC	518186.82	7766591.59	0	-90	1	5	0.001	1	5
Bandit	OPV0462	VAC	518189.53	7766192.09	0	-90	1	5	0.001	1	5
Bandit	OPV1815	VAC	518210.01	7766791.86	0	-90	3	3	0.001	1	3.4
Bandit	OPV1800	VAC	518210.85	7766592.67	0	-90	1	1	0.001	1	1.6
Bandit	OPV1757	VAC	518213.77	7766392.37	0	-90	1	1	0.001	1	1.6
Bandit	OPV1801	VAC	518236.96	7766592.64	0	-90	2	3	0.001	1	3.1
Bandit	OPV0390	VAC	518283.36	7766993.19	0	-90	1	5	0.001	1	5
Bandit	OPV2284	VAC	518158.45	7766440.01	0	-90	2	3	0.001	1	3.5
Bandit	OPV0296	VAC	518077.32	7767791.29	0	-90	1	5	-0.001	-1	5
Bandit	OPV1885	VAC	518077.32	7767791.29	0	-90	1	1	-0.001	-1	1.6
Bandit	OPV1854	VAC	518078.16	7767590.99	0	-90	1	1	-0.001	-1	1.6
Bandit	OPV0319	VAC	518081.09	7767391.79	0	-90	1	5	-0.001	-1	5
Bandit	OPV1853	VAC	518081.09	7767391.79	0	-90	3	3	-0.001	-1	3.4
Bandit	OPV1886	VAC	518126.43	7767791.24	0	-90	1	1	-0.001	-1	1.6
Bandit	OPV1817	VAC	518159.86	7766791.92	0	-90	3	3	-0.001	-1	3.4
Bandit	OPV1888	VAC	518175.75	7767992.59	0	-90	1	1	-0.001	-1	1.6
Bandit	OPV0297	VAC	518176.58	7767792.29	0	-90	1	5	-0.001	-1	5
Bandit	OPV1887	VAC	518176.58	7767792.29	0	-90	1	1	-0.001	-1	1.6
Bandit	OPV0318	VAC	518180.34	7767391.69	0	-90	1	5	-0.001	-1	5
Bandit	OPV0389	VAC	518183.06	7766992.19	0	-90	1	5	-0.001	-1	5
Bandit	OPV1799	VAC	518186.82	7766591.59	0	-90	2	2	-0.001	-1	2.4
Bandit	OPV1758	VAC	518187.65	7766392.39	0	-90	2	2	-0.001	-1	2.4
Bandit	OPV1814	VAC	518236.13	7766792.94	0	-90	3	3	-0.001	-1	3.4
Black Cat	BCAC0036R	AC	500583.34	7746791.22	360	-60	3	4	0.830	830	60
Black Cat	BCAC0035	AC	500583.34	7746815.57	360	-60	2	3	0.190	190	60
Black Cat	BCAC0036	AC	500583.34	7746791.22	360	-60	4	4	0.190	190	60
Black Cat	BCAC0009	AC	500264.02	7747015.88	26	-60	2	3	0.090	90	60
Black Cat	BCAC0007	AC	500284.89	7747050.19	26	-60	2	2	0.060	60	57
Black Cat	BCAC0034	AC	500583.34	7746841.02	360	-60	1	1	0.060	60	60
Black Cat	BCAC0005	AC	500304.72	7747084.49	26	-60	1	1	0.040	40	60
Black Cat	BCAC0033	AC	500583.34	7746866.47	360	-60	2	3	0.040	40	60
Black Cat	BCAC0013	AC	500221.23	7746940.63	30	-60	3	4	0.030	30	60
Black Cat	BCAC0011	AC	500244.19	7746980.47	30	-60	9	1	0.030	30	60
Black Cat	BCAC0015	AC	500196.19	7746897.47	30	-60	2	2	0.020	20	60
Black Cat	BCAC0014	AC	500208.71	7746918.50	30	-60	2	2	0.020	20	60
Black Cat	BCAC0012	AC	500234.80	7746962.76	30	-60	3	3	0.020	20	60
Black Cat	BCAC0010	AC	500254.63	7746999.28	26	-60	2	2	0.020	20	51
Black Cat	BCAC0017	AC	500173.23	7746858.74	30	-60	3	4	0.010	10	60
Black Cat	BCAC0008	AC	500274.45	7747032.48	26	-60	2	2	0.010	10	51
Black Cat	BCAC0006	AC	500294.28	7747067.89	26	-60	3	4	0.010	10	51
Black Cat	BCAC0003	AC	500324.55	7747119.90	26	-60	5	6	0.010	10	60
Black Cat	BCAC0002	AC	500333.94	7747136.50	26	-60	5	5	0.010	10	59
Black Cat	BCAC0001	AC	500344.38	7747155.32	26	-60	4	4	0.010	10	60



Prospect	Hole ID	Hole Type	Easting (m)	Northing (m)	Azimuth (degrees)	Inclination (degrees)	Depth From (m)	Depth To (m)	Maximum Au ppm (g/t)	Maximum Au ppb	Hole Depth (m)
Black Cat	BCAC0016	AC	500183.66	7746876.44	30	-60	5	6	-0.010	-10	60
Black Cat	BCAC0004	AC	500314.11	7747116.58	26	-60	5	6	-0.010	-10	60
Black Cat	BCRB0032R	RAB	500437.25	7746916.28	30	-60	2	2	6.370	6370	41
Black Cat	BCRB0019	RAB	501026.84	7746736.98	30	-60	9	1	6.040	6040	66
Black Cat	BCRB0014	RAB	500971.53	7746641.81	30	-60	2	2	4.370	4370	51
Black Cat	BCRB005	RAB	500779.52	7746707.11	30	-55	1	1	2.170	2170	72
Black Cat	BCRB0032	RAB	500437.25	7746916.28	30	-60	1	2	1.740	1740	40
Black Cat	BCRB0039	RAB	500512.39	7747045.75	30	-60	1	1	1.730	1730	42
Black Cat	BCRB010	RAB	500662.64	7746704.90	30	-55	6	6	1.700	1700	81
Black Cat	BCRB012	RAB	500693.95	7746761.34	30	-55	2	2	1.570	1570	64
Black Cat	BCRB0041	RAB	500723.17	7746811.14	30	-60	3	3	1.520	1520	54
Black Cat	BCRB0030	RAB	500419.50	7746885.29	30	-60	6	9	1.370	1370	36
Black Cat	BCRB0026	RAB	500364.20	7746790.12	30	-60	0	3	1.350	1350	69
Black Cat	BCRB002	RAB	500729.43	7746620.79	30	-55	3	3	1.250	1250	65
Black Cat	BCRB0034R	RAB	500460.21	7746955.01	30	-60	3	3	0.990	990	53
Black Cat	BCRB011	RAB	500679.34	7746735.89	30	-55	5	5	0.660	660	75
Black Cat	BCRB001	RAB	500713.77	7746594.23	30	-55	4	4	0.630	630	64
Black Cat	BCRB0031	RAB	500426.81	7746898.57	30	-60	3	4	0.600	600	43
Black Cat	BCRB003	RAB	500742.99	7746646.25	30	-55	1	1	0.550	550	77
Black Cat	BCRB009	RAB	500643.86	7746675.02	30	-55	5	5	0.500	500	82
Black Cat	BCRB0044	RAB	500721.09	7746807.82	210	-60	6	9	0.420	420	54
Black Cat	BCRB0025	RAB	500356.89	7746776.84	30	-60	2	2	0.400	400	33
Black Cat	BCRB0034	RAB	500460.21	7746955.01	30	-60	2	3	0.390	390	53
Black Cat	BCRB0036R	RAB	500480.03	7746989.32	30	-60	4	4	0.380	380	59
Black Cat	BCRB0037R	RAB	500492.56	7747011.45	30	-60	4	4	0.350	350	56
Black Cat	BCRB004	RAB	500760.73	7746677.23	30	-55	4	4	0.250	250	75
Black Cat	BCRB0031R	RAB	500426.81	7746898.57	30	-60	3	3	0.190	190	43
Black Cat	BCRB0040	RAB	500710.65	7746790.11	30	-60	3	6	0.180	180	60
Black Cat	BCRB006	RAB	500796.22	7746736.99	30	-55	2	2	0.180	180	63
Black Cat	BCRB008	RAB	500626.12	7746645.14	30	-55	7	7	0.150	150	81
Black Cat	BCRB007	RAB	500808.74	7746759.12	30	-55	1	1	0.150	150	43
Black Cat	BCRB0033	RAB	500446.64	7746932.88	30	-60	6	9	0.140	140	53
Black Cat	BCRB0042	RAB	500736.74	7746833.27	30	-60	1	1	0.140	140	63
Black Cat	BCRB0014R	RAB	500971.53	7746641.81	30	-60	3	3	0.100	100	51
Black Cat	BCRB0013	RAB	500956.92	7746616.36	30	-60	3	3	0.090	90	66
Black Cat	BCRB0033R	RAB	500446.64	7746932.88	30	-60	3	3	0.080	80	53
Black Cat	BCRB0035	RAB	500472.73	7746976.04	30	-60	1	1	0.070	70	30
Black Cat	BCRB0037	RAB	500492.56	7747011.45	30	-60	9	1	0.070	70	56
Black Cat	BCRB0029	RAB	500410.11	7746868.69	30	-60	2	2	0.060	60	51
Black Cat	BCRB0028	RAB	500394.46	7746842.13	30	-60	3	4	0.050	50	63
Black Cat	BCRB0015	RAB	500981.96	7746659.51	30	-60	4	4	0.040	40	54
Black Cat	BCRB0016	RAB	500991.36	7746676.11	30	-60	4	5	0.040	40	57
Black Cat	BCRB0045	RAB	500353.77	7747170.81	26	-60	3	3	0.020	20	60
Black Cat	BCRB0017	RAB	501003.88	7746698.24	30	-60	2	2	0.020	20	63
Black Cat	BCRB0018	RAB	501017.45	7746720.38	30	-60	4	5	0.020	20	54
Black Cat	BCRB0024	RAB	500347.50	7746760.24	30	-60	3	3	0.010	10	51
Black Cat	BCRB0027	RAB	500379.85	7746816.68	30	-60	2	2	0.010	10	63
Black Cat	BCRB0036	RAB	500480.03	7746989.32	30	-60	5	5	0.010	10	59
Black Cat	BCRB0043	RAB	500750.31	7746858.72	30	-60	4	4	0.010	10	66
Black Cat	BCRB0038	RAB	500504.04	7747032.47	30	-60	3	3	-0.010	-10	38
Bluebeard	WV0747	VAC	509530	7781083	356	-90	8.5	8.7	0.06	60	8.7
Bluebeard	WV0748	VAC	509770	7781200	356	-90	13.7	13.9	0.023	23	13.9
Bonny	OPRB0416	RAB	512360.45	7769745.07	86	-60	5	9	0.059	59	51
Bonny	OPRB0417	RAB	512060.56	7769741.96	86	-60	3	3	0.031	31	39
Bonny	OPRB0065	RAB	512358.65	7770144.56	0	-90	1	1	0.031	31	19
Bonny	OPRB0408	RAB	512258.33	7770143.53	86	-60	1	1	0.013	13	19
Bonny	OPRB0415	RAB	512660.35	7769747.07	86	-60	2	5	0.012	12	30
Bonny	OPRB0410	RAB	511957.38	7770141.52	86	-90	8	1	0.009	9	39
Bonny	WRB0059	RAB	511984.40	7769925.71	0	-90	1	1	0.009	9	36
Bonny	WRB0117	RAB	510773.23	7771465.82	0	-90	2	2	0.007	7	31
Bonny	OPRB0409	RAB	512158.01	7770143.60	86	-60	2	6	0.006	6	51
Corsair	OPRB0498	BRAB	516233.59	7770415.81	270	-60	6	6	1.490	1490	81
Corsair	OPRB0502	BRAB	516633.81	7770415.44	270	-60	5	6	1.000	1000	81
Corsair	OPRB0506	BRAB	516333.67	7770165.62	270	-60	6	7	0.997	997	84
Corsair	OPRB0507	BRAB	516433.99	7770165.53	270	-60	5	6	0.546	546	93
Corsair	OPRB0516	BRAB	516433.75	7769915.43	270	-60	7	8	0.344	344	81
Corsair	OPRB0552	BRAB	516134.32	7770414.80	270	-60	3	3	0.341	341	90
Corsair	OPRB0503	BRAB	516733.09	7770415.34	270	-60	6	6	0.332	332	84
Corsair	OPRB0517	BRAB	516533.02	7769915.34	270	-60	6	6	0.314	314	81

Prospect	Hole ID	Hole Type	Easting (m)	Northing (m)	Azimuth (degrees)	Inclination (degrees)	Depth From (m)	Depth To (m)	Maximum Au ppm (g/t)	Maximum Au ppb	Hole Depth (m)
Corsair	OPR0488	BRAB	516233.82	7770664.81	270	-60	5	6	0.308	308	84
Corsair	OPR0499	BRAB	516333.91	7770415.72	270	-60	6	7	0.298	298	81
Corsair	OPR0509	BRAB	516633.58	7770165.34	270	-60	7	8	0.178	178	81
Corsair	OPR0574	BRAB	516132.74	7770964.79	270	-60	6	7	0.171	171	81
Corsair	OPR0501	BRAB	516533.50	7770415.53	270	-60	3	4	0.170	170	81
Corsair	OPR0567	BRAB	516033.83	7771365.48	270	-60	4	4	0.168	168	60
Corsair	TBR0823	BRAB	515733.45	7773165.13	270	-60	4	4	0.130	130	99
Corsair	OPR0487	BRAB	516134.55	7770664.90	270	-60	7	8	0.118	118	90
Corsair	OPR0513	BRAB	516233.36	7770165.72	270	-60	6	6	0.100	100	81
Corsair	OPR0508	BRAB	516533.26	7770165.43	270	-60	4	4	0.097	97	88
Corsair	OPR0500	BRAB	516434.23	7770415.63	270	-60	4	5	0.088	88	81
Corsair	OPR0519	BRAB	516732.61	7769915.15	270	-60	6	6	0.087	87	81
Corsair	OPR0569	BRAB	516233.43	7771365.30	270	-60	3	3	0.082	82	81
Corsair	OPR0504	BRAB	516833.40	7770415.24	270	-60	7	7	0.072	72	81
Corsair	OPR0570	BRAB	516333.76	7771365.20	270	-60	6	6	0.068	68	81
Corsair	OPR0510	BRAB	516732.85	7770165.24	270	-60	6	6	0.064	64	81
Corsair	TBR0829	BRAB	515533.83	7773165.31	270	-60	7	7	0.056	56	75
Corsair	OPR0485	BRAB	515932.87	7770665.08	270	-60	5	5	0.048	48	60
Corsair	TBR0825	BRAB	515934.11	7773164.94	270	-60	6	6	0.040	40	75
Corsair	OPR0518	BRAB	516633.34	7769915.24	270	-60	4	5	0.035	35	81
Corsair	OPR0515	BRAB	516333.44	7769915.53	270	-60	6	6	0.034	34	81
Corsair	OPR0511	BRAB	516833.16	7770165.15	270	-60	1	2	0.030	30	81
Corsair	OPR0576	BRAB	516333.38	7770965.71	270	-60	6	6	0.026	26	81
Corsair	OPR0491	BRAB	516733.33	7770665.44	270	-60	9	1	0.026	26	81
Corsair	OPR0551	BRAB	516034.00	7770414.89	270	-60	3	4	0.024	24	81
Corsair	OPR0572	BRAB	516533.36	7771365.02	270	-60	1	1	0.023	23	44
Corsair	OPR0489	BRAB	516334.14	7770665.82	270	-60	7	7	0.020	20	81
Corsair	OPR0505	BRAB	516933.72	7770415.15	270	-60	3	3	0.019	19	81
Corsair	OPR0579	BRAB	516634.34	7770965.43	270	-60	1	1	0.018	18	81
Corsair	OPR0486	BRAB	516033.19	7770664.99	270	-60	9	1	0.017	17	84
Corsair	OPR0512	BRAB	516933.48	7770165.05	270	-60	1	1	0.017	17	60
Corsair	TBR0827	BRAB	516133.74	7773165.87	270	-60	6	6	0.016	16	66
Corsair	OPR0575	BRAB	516233.06	7770965.81	270	-60	9	1	0.016	16	81
Corsair	OPR0556	BRAB	516233.70	7772765.18	270	-60	4	4	0.015	15	45
Corsair	OPR0577	BRAB	516434.75	7770965.62	270	-60	1	1	0.015	15	81
Corsair	OPR0490	BRAB	516533.74	7770665.63	270	-60	9	1	0.015	15	81
Corsair	OPR0578	BRAB	516534.02	7770965.52	270	-60	3	3	0.015	15	81
Corsair	OPR0573	BRAB	516033.46	7770964.89	270	-60	4	5	0.011	11	52
Corsair	TBR0830	BRAB	515634.16	7773165.22	270	-60	0	3	0.009	9	75
Corsair	OPR0557	BRAB	516332.98	7772765.08	270	-60	3	3	0.008	8	39
Corsair	TBR0824	BRAB	515833.78	7773165.04	270	-60	7	7	0.007	7	75
Corsair	OPR0561	BRAB	515933.20	7772165.66	270	-60	1	1	0.007	7	52
Corsair	OPR0560	BRAB	516632.93	7772764.80	270	-60	6	7	0.007	7	81
Corsair	OPR0554	BRAB	516033.03	7772765.36	270	-60	3	4	0.006	6	42
Corsair	OPR0564	BRAB	516234.18	7772165.39	270	-60	0	3	0.006	6	49
Corsair	OPR0566	BRAB	516433.79	7772165.20	270	-60	9	1	0.006	6	36
Corsair	OPR0559	BRAB	516532.60	7772764.89	270	-60	6	7	0.006	6	73
Corsair	OPR0520	BRAB	516832.92	7769915.05	270	-60	1	1	0.006	6	87
Corsair	OPR0521	BRAB	516933.23	7769914.95	270	-60	1	2	0.006	6	48
Corsair	OPR0555	BRAB	516133.36	7772765.27	270	-60	0	3	0.005	5	38
Corsair	OPR0563	BRAB	516133.85	7772165.48	270	-60	2	2	0.005	5	48
Corsair	OPR0565	BRAB	516334.51	7772165.29	270	-60	3	3	0.005	5	75
Corsair	TBR0826	BRAB	516033.40	7773164.85	270	-60	0	3	0.004	4	42
Corsair	OPR0571	BRAB	516433.03	7771365.11	270	-60	6	7	0.004	4	81
Corsair	OPR0568	BRAB	516133.11	7771365.39	270	-60	3	3	0.003	3	55
Corsair	OPR0553	BRAB	515933.75	7772765.45	270	-60	3	3	0.001	1	43
Corsair	OPR0285	RAB	516258.45	7770176.76	85.43	-60	1	1	0.380	380	19
Corsair	OPR0302	RAB	516253.60	7770576.26	85.43	-60	3	4	0.073	73	45
Corsair	OPR0379	RAB	516668.07	7770179.69	266	-60	5	6	0.060	60	60
Corsair	WRB0017	RAB	516663.91	7770195.19	0	-90	4	7	0.058	58	19
Corsair	OPR0284	RAB	516307.56	7770176.71	85.43	-60	4	4	0.054	54	46
Corsair	OPR0099	RAB	515850.59	7770972.80	0	-90	1	1	0.049	49	30
Corsair	OPR0097	RAB	516051.24	7770974.83	0	-90	1	2	0.044	44	30
Corsair	OPR0381	RAB	516582.39	7770178.67	86	-60	5	5	0.040	40	60
Corsair	OPR0380	RAB	516631.50	7770179.73	86	-60	3	6	0.040	40	60
Corsair	OPR0286	RAB	516208.29	7770175.70	85.43	-60	1	1	0.038	38	25
Corsair	TBR0592	RAB	515826.73	7771162.05	123	-60	1	1	0.035	35	39
Corsair	OPR0471	RAB	516047.43	7771374.32	86	-60	9	1	0.035	35	30
Corsair	OPR0472	RAB	515847.83	7771373.40	86	-60	1	2	0.029	29	33
Corsair	TBR0590	RAB	516148.38	7770924.94	123	-60	4	4	0.029	29	45
Corsair	OPR0277	RAB	516657.62	7770179.70	85.43	-60	1	1	0.024	24	19
Corsair	OPR0287	RAB	516158.13	7770175.75	85.43	-60	1	2	0.020	20	22



Prospect	Hole ID	Hole Type	Easting (m)	Northing (m)	Azimuth (degrees)	Inclination (degrees)	Depth From (m)	Depth To (m)	Maximum Au ppm (g/t)	Maximum Au ppb	Hole Depth (m)
Corsair	OPR0306	RAB	516054.00	7770575.34	85.43	-60	3	3	0.019	19	42
Corsair	WRB0172	RAB	515877.54	7773016.71	0	-90	7	8	0.015	15	91
Corsair	OPR0470	RAB	516248.07	7771376.35	86	-60	1	1	0.014	14	45
Corsair	OPR0295	RAB	516603.67	7770579.25	85.43	-60	3	3	0.011	11	37
Corsair	OPR0468	RAB	516647.28	7771379.29	86	-60	9	1	0.011	11	30
Corsair	OPR0278	RAB	516607.47	7770179.75	85.43	-60	1	1	0.010	10	25
Corsair	OPR0473	RAB	515648.22	7771371.37	86	-60	1	1	0.009	9	30
Corsair	TBR0591	RAB	515987.56	7771043.50	123	-60	2	2	0.009	9	30
Corsair	OPR0466	RAB	515844.01	7771772.90	86	-60	1	1	0.008	8	30
Corsair	WRB0184	RAB	515892.98	7772758.85	0	-90	4	5	0.008	8	85
Corsair	OPR0288	RAB	516107.97	7770175.79	85.43	-60	2	2	0.008	8	28
Corsair	OPR0283	RAB	516357.72	7770177.77	85.43	-60	7	1	0.008	8	13
Corsair	OPR0274	RAB	516807.05	7770180.66	85.43	-60	1	1	0.008	8	16
Corsair	OPR0290	RAB	516855.51	7770581.22	85.43	-60	1	1	0.008	8	22
Corsair	WRB0185	RAB	515824.27	7771896.85	0	-90	2	2	0.007	7	88
Corsair	OPR0465	RAB	516045.71	7771774.92	86	-60	2	2	0.007	7	33
Corsair	OPR0464	RAB	516245.31	7771776.95	86	-60	1	1	0.007	7	36
Corsair	OPR0469	RAB	516447.68	7771378.38	86	-60	9	1	0.007	7	30
Corsair	OPR0280	RAB	516508.19	7770178.74	85.43	-60	1	1	0.007	7	16
Corsair	OPR0130	RAB	517057.84	7770182.63	0	-90	1	1	0.007	7	21
Corsair	OPR0304	RAB	516154.32	7770575.24	85.43	-60	1	2	0.005	5	30
Corsair	OPR0299	RAB	516404.07	7770577.22	85.43	-60	3	4	0.005	5	48
Corsair	OPR0273	RAB	516857.21	7770181.72	85.43	-60	1	1	0.005	5	19
Corsair	OPR0307	RAB	516003.84	7770574.28	85.43	-60	1	1	0.004	4	33
Corsair	OPR0303	RAB	516204.48	7770576.30	85.43	-60	2	3	0.004	4	30
Corsair	OPR0275	RAB	516757.94	7770180.71	85.43	-60	1	1	0.004	4	31
Corsair	TBR0052	RAB	515728.27	7773221.57	0	-90	2	2	0.003	3	27
Corsair	OPR0300	RAB	516353.91	7770577.27	85.43	-60	2	2	0.003	3	27
Corsair	TBR0693	RAB	516453.10	7772687.51	123	-60	1	1	0.003	3	30
Corsair	OPR0281	RAB	516458.03	7770177.68	85.43	-60	7	1	0.003	3	16
Corsair	OPR0276	RAB	516707.78	7770179.65	85.43	-60	1	1	0.003	3	19
Corsair	OPR0272	RAB	516907.37	7770181.67	85.43	-60	2	3	0.003	3	31
Corsair	OPR0271	RAB	516957.53	7770181.63	85.43	-60	1	1	0.003	3	19
Corsair	TBR0698	RAB	516051.00	7772984.46	123	-60	9	1	0.002	2	24
Corsair	OPR0305	RAB	516104.16	7770575.29	85.43	-60	2	2	0.002	2	27
Corsair	WRB0016	RAB	516153.90	7770124.85	0	-90	2	2	0.002	2	25
Corsair	OPR0301	RAB	516303.76	7770577.32	85.43	-60	2	2	0.002	2	27
Corsair	TBR0694	RAB	516372.68	7772747.34	123	-60	6	9	0.002	2	21
Corsair	OPR0282	RAB	516407.88	7770177.73	85.43	-60	7	1	0.002	2	16
Corsair	OPR0463	RAB	516444.92	7771777.87	86	-60	9	1	0.002	2	30
Corsair	OPR0263	RAB	516509.90	7769778.14	85.43	-60	1	1	0.002	2	13
Corsair	TBR0691	RAB	516613.93	7772568.94	123	-60	1	1	0.002	2	30
Corsair	OPR0462	RAB	516644.53	7771779.89	86	-60	1	1	0.002	2	30
Corsair	OPR0091	RAB	516651.08	7770979.80	0	-90	1	1	0.002	2	27
Corsair	OPR0291	RAB	516803.26	7770581.27	85.43	-60	1	1	0.002	2	25
Corsair	TBR0051	RAB	515809.74	7773161.74	0	-90	1	2	0.001	1	24
Corsair	TBR0050	RAB	515889.12	7773103.01	0	-90	1	1	0.001	1	27
Corsair	OPR0098	RAB	515951.96	7770973.81	0	-90	1	1	0.001	1	19
Corsair	OPR0308	RAB	515954.73	7770574.32	85.43	-60	2	2	0.001	1	24
Corsair	TBR0049	RAB	515970.58	7773043.18	0	-90	9	1	0.001	1	18
Corsair	WRB0030	RAB	516093.65	7772765.31	0	-90	2	2	0.001	1	24
Corsair	TBR0697	RAB	516130.38	7772924.63	123	-60	0	3	0.001	1	27
Corsair	TBR0696	RAB	516211.84	7772865.90	123	-60	1	1	0.001	1	24
Corsair	OPR0095	RAB	516251.88	7770976.86	0	-90	2	2	0.001	1	30
Corsair	TBR0695	RAB	516292.26	7772806.07	123	-60	9	1	0.001	1	27
Corsair	TBR0692	RAB	516534.56	7772628.78	123	-60	2	2	0.001	1	30
Corsair	OPR0296	RAB	516553.51	7770579.29	85.43	-60	2	3	0.001	1	37
Corsair	OPR0279	RAB	516557.31	7770178.69	85.43	-60	7	1	0.001	1	19
Corsair	OPR0262	RAB	516560.06	7769779.20	85.43	-60	1	1	0.001	1	13
Corsair	OPR0294	RAB	516653.83	7770579.20	85.43	-60	2	2	0.001	1	28
Corsair	OPR0090	RAB	516751.40	7770980.81	0	-90	2	2	0.001	1	24
Corsair	OPR0292	RAB	516754.15	7770580.21	85.43	-60	1	2	0.001	1	25
Corsair	OPR0088	RAB	516950.99	7770981.72	0	-90	1	1	0.001	1	27
Corsair	OPR0096	RAB	516151.56	7770975.84	0	-90	2	3	-0.001	-1	30
Corsair	OPR0094	RAB	516351.16	7770976.76	0	-90	2	3	-0.001	-1	30
Corsair	OPR0093	RAB	516451.48	7770977.78	0	-90	2	2	-0.001	-1	27
Corsair	OPR0298	RAB	516454.23	7770578.28	85.43	-60	5	5	-0.001	-1	66
Corsair	OPR0297	RAB	516504.39	7770578.23	85.43	-60	2	2	-0.001	-1	49
Corsair	OPR0092	RAB	516551.80	7770978.79	0	-90	2	2	-0.001	-1	27
Corsair	WRB0031	RAB	516573.26	7772665.26	0	-90	1	1	-0.001	-1	18
Corsair	OPR0293	RAB	516703.99	7770580.26	85.43	-60	1	2	-0.001	-1	25
Corsair	OPR0089	RAB	516850.67	7770981.82	0	-90	2	3	-0.001	-1	30
Corsair	OPR0131	RAB	516957.53	7770181.63	0	-90	1	2	-0.001	-1	21

Prospect	Hole ID	Hole Type	Easting (m)	Northing (m)	Azimuth (degrees)	Inclination (degrees)	Depth From (m)	Depth To (m)	Maximum Au ppm (g/t)	Maximum Au ppb	Hole Depth (m)
Corsair	OPRC0074	RC	516373.38	7770165.59	266.5	-60	1	1	3.550	3550	186
Corsair	OPRC0073	RC	516274.34	7770415.78	270	-60	6	6	0.780	780	180
Corsair	OPRB0558	RH	516433.31	7772764.99	270	-60	4	4	0.011	11	54
Corsair	OPRB0562	RH	516034.57	7772165.57	270	-60	4	4	0.006	6	51
Corsair	OPV0016	VAC	516657.62	7770179.70	0	-90	1	5	0.300	300	5
Corsair	OPV0015	VAC	516557.31	7770178.69	0	-90	1	5	0.012	12	5
Corsair	OPV0012	VAC	516258.45	7770176.76	0	-90	1	5	0.006	6	5
Corsair	OPV0014	VAC	516458.03	7770177.68	0	-90	1	5	0.006	6	5
Corsair	OPV0017	VAC	516757.94	7770180.71	0	-90	1	5	0.005	5	5
Corsair	WV0242	VAC	515897.71	7772218.82	0	-90	8	8	0.004	4	8.5
Corsair	WV1002	VAC	515839.50	7772555.28	0	-90	1	1	0.003	3	12.2
Corsair	OPV0019	VAC	516957.53	7770182.73	0	-90	1	5	0.003	3	5
Corsair	OPV0011	VAC	516158.13	7770175.75	0	-90	1	5	0.002	2	5
Corsair	OPV0018	VAC	516857.21	7770181.72	0	-90	1	5	0.002	2	5
Corsair	WV1004	VAC	515656.97	7772967.11	0	-90	1	1	0.001	1	12.2
Corsair	WV1005	VAC	515840.93	7772981.33	0	-90	6	8	0.001	1	8.6
Corsair	WV1008	VAC	516031.34	7773196.95	0	-90	1	1	0.001	1	15.8
Corsair	WV0241	VAC	516148.54	7772225.22	0	-90	5	5	0.001	1	5.2
Corsair	OPV0013	VAC	516357.72	7770177.77	0	-90	1	5	0.001	1	5
Corsair	OPV0068	VAC	516560.06	7769779.20	0	-90	1	5	0.001	1	5
Corsair	WV1010	VAC	515625.80	7773167.44	0	-90	1	1	-0.001	-1	15.8
Corsair	WV0997	VAC	515825.74	7772371.59	0	-90	8	1	-0.001	-1	10.4
Corsair	WV1009	VAC	515832.74	7773166.14	0	-90	1	1	-0.001	-1	12.2
Corsair	WV0998	VAC	516004.44	7772358.15	0	-90	6	8	-0.001	-1	8.6
Corsair	WV1001	VAC	516028.67	7772570.60	0	-90	6	8	-0.001	-1	8.6
Corsair	WV1007	VAC	516219.43	7773152.51	0	-90	5	6	-0.001	-1	6.8
Corsair	WV1006	VAC	516220.33	7772998.69	0	-90	1	1	-0.001	-1	14
Corsair	WV1000	VAC	516239.80	7772582.58	0	-90	5	6	-0.001	-1	6.8
Corsair	WV0999	VAC	516248.98	7772344.65	0	-90	5	6	-0.001	-1	6.8
Corsair	WV0240	VAC	516385.86	7772322.38	0	-90	4	5	-0.001	-1	5.1
Corsair	WV0239	VAC	516590.71	7772335.47	0	-90	3	3	-0.001	-1	3.3
Fortune	TBRB0792	RAB	514431.60	7776164.09	303	-54	2	2	0.036	36	48
Fortune	TBRB0805	RAB	514157.57	7775961.80	303	-54	7	1	0.012	12	55
Fortune	TBRB0797	RAB	514255.89	7776044.72	303	-54	3	3	0.011	11	46
Fortune	TBRB0793	RAB	514447.27	7776151.90	303	-54	3	4	0.010	10	48
Fortune	TBRB0798	RAB	514271.56	7776032.53	303	-54	4	4	0.008	8	46
Fortune	TBRB0806	RAB	514174.28	7775949.61	303	-54	1	1	0.003	3	58
Fortune	TBRB0801	RAB	514319.62	7775997.08	303	-54	2	2	0.003	3	46
Fortune	TBRB0802	RAB	514337.38	7775984.89	303	-54	2	3	0.002	2	46
Fortune	TBRB0791	RAB	514414.89	7776176.27	303	-54	4	4	0.002	2	49
Fortune	TBRB0804	RAB	514141.90	7775973.99	303	-54	3	4	0.001	1	46
Fortune	TBRB0807	RAB	514189.95	7775938.53	303	-54	3	3	0.001	1	46
Fortune	TBRB0808	RAB	514205.62	7775926.35	303	-54	2	2	0.001	1	46
Fortune	TBRB0796	RAB	514240.22	7776056.90	303	-54	4	4	0.001	1	46
Fortune	TBRB0799	RAB	514288.28	7776021.45	303	-54	2	3	0.001	1	43
Fortune	TBRB0800	RAB	514303.95	7776009.26	303	-54	1	2	0.001	1	46
Fortune	TBRB0794	RAB	514462.94	7776140.82	303	-54	4	4	0.001	1	46
Fortune	TBRB0795	RAB	514479.66	7776128.63	303	-54	4	4	0.001	1	47
Fortune	TBV0181	VAC	514126.15	7775892.11	0	-90	0	1	0.013	13	1.6
Fortune	TBV0101	VAC	514323.80	7775994.86	0	-90	0	1	0.008	8	1.6
Fortune	TBV0180	VAC	514146.00	7775877.71	0	-90	0	1	0.007	7	1.6
Fortune	TBV0120	VAC	514214.06	7776013.76	0	-90	2	3	0.004	4	3.4
Fortune	TBV0533	VAC	514462.94	7776140.82	0	-90	4	5	0.004	4	5.2
Fortune	TBV0531	VAC	514423.25	7776169.63	0	-90	4	5	0.003	3	5.2
Fortune	TBV0532	VAC	514443.10	7776155.22	0	-90	6	6	0.003	3	6.9
Fortune	TBV0138	VAC	514204.60	7775958.44	0	-90	1	1	0.002	2	1.6
Fortune	TBV0182	VAC	514105.26	7775907.62	0	-90	0	1	0.001	1	1.6
Fortune	TBV0153	VAC	514134.56	7775947.43	0	-90	1	2	0.001	1	2.6
Fortune	TBV0139	VAC	514184.75	7775972.84	0	-90	0	1	0.001	1	1.6
Fortune	TBV0106	VAC	514224.55	7776067.98	0	-90	1	2	0.001	1	2.6
Fortune	TBV0105	VAC	514244.40	7776053.58	0	-90	1	3	0.001	1	3.4
Fortune	TBV0103	VAC	514284.10	7776023.67	0	-90	2	3	0.001	1	3.4
Fortune	TBV0102	VAC	514303.95	7776009.26	0	-90	2	3	0.001	1	3.4
Fortune	TBV0554	VAC	514322.85	7776118.80	0	-90	3	3	0.001	1	3.5
Fortune	TBV0552	VAC	514364.64	7776090.00	0	-90	3	3	0.001	1	3.5
Fortune	TBV0551	VAC	514384.49	7776074.49	0	-90	3	3	0.001	1	3.5
Fortune	TBV0154	VAC	514154.41	7775933.03	0	-90	0	1	-0.001	-1	1.6
Fortune	TBV0140	VAC	514163.86	7775988.35	0	-90	1	1	-0.001	-1	1.6
Fortune	TBV0155	VAC	514175.30	7775917.52	0	-90	0	1	-0.001	-1	1.6



Prospect	Hole ID	Hole Type	Easting (m)	Northing (m)	Azimuth (degrees)	Inclination (degrees)	Depth From (m)	Depth To (m)	Maximum Au ppm (g/t)	Maximum Au ppb	Hole Depth (m)
Fortune	TBV0119	VAC	514194.21	7776028.17	0	-90	1	3	-0.001	-1	3.4
Fortune	TBV0156	VAC	514195.15	7775903.12	0	-90	0	1	-0.001	-1	1.6
Fortune	TBV0137	VAC	514224.45	7775942.93	0	-90	1	2	-0.001	-1	2.6
Fortune	TBV0121	VAC	514233.90	7775998.26	0	-90	1	1	-0.001	-1	1.6
Fortune	TBV0122	VAC	514253.75	7775983.85	0	-90	1	2	-0.001	-1	2.6
Fortune	TBV0104	VAC	514264.25	7776039.18	0	-90	1	3	-0.001	-1	3.4
Fortune	TBV0090	VAC	514272.66	7776093.39	0	-90	2	3	-0.001	-1	3.4
Fortune	TBV0123	VAC	514274.65	7775968.34	0	-90	2	2	-0.001	-1	2.6
Fortune	TBV0091	VAC	514294.60	7776078.99	0	-90	2	3	-0.001	-1	3.4
Fortune	TBV0092	VAC	514314.45	7776064.59	0	-90	1	3	-0.001	-1	3.4
Fortune	TBV0093	VAC	514334.30	7776049.08	0	-90	1	3	-0.001	-1	3.4
Fortune	TBV0553	VAC	514342.70	7776104.40	0	-90	3	3	-0.001	-1	3.5
Fortune	TBV0094	VAC	514354.14	7776034.68	0	-90	1	3	-0.001	-1	3.4
Fortune	TBV0095	VAC	514373.99	7776020.27	0	-90	1	3	-0.001	-1	3.4
Fortune	TBV0550	VAC	514404.34	7776060.09	0	-90	3	3	-0.001	-1	3.5
Jolly Roger	TBRB0658	RAB	517669.34	7775518.16	123	-60	3	4	0.075	75	42
Jolly Roger	TBRB0657	RAB	517749.77	7775459.42	123	-60	2	2	0.033	33	36
Jolly Roger	TBRB0680	RAB	517026.71	7775742.33	123	-60	1	1	0.029	29	30
Jolly Roger	TBRB0681	RAB	516987.02	7775772.25	123	-60	1	1	0.029	29	33
Jolly Roger	TBRB0659	RAB	517648.45	7775533.67	123	-60	3	3	0.028	28	60
Jolly Roger	TBRB0631	RAB	517661.74	7776268.45	123	-60	6	9	0.018	18	39
Jolly Roger	TBRB0676	RAB	517307.69	7775535.12	123	-60	9	1	0.018	18	33
Jolly Roger	TBRB0682	RAB	516946.28	7775802.17	123	-60	1	1	0.017	17	30
Jolly Roger	TBRB0675	RAB	517389.16	7775476.39	123	-60	6	9	0.016	16	30
Jolly Roger	TBRB0645	RAB	517704.31	7775988.43	123	-60	6	9	0.015	15	33
Jolly Roger	TBRB0677	RAB	517228.31	7775594.96	123	-60	9	1	0.012	12	33
Jolly Roger	TBRB0679	RAB	517067.45	7775713.52	123	-60	1	1	0.012	12	30
Jolly Roger	TBRB0635	RAB	517501.92	7776387.02	123	-60	9	1	0.011	11	33
Jolly Roger	TBRB0643	RAB	517865.17	7775869.86	123	-60	3	3	0.011	11	36
Jolly Roger	TBRB0637	RAB	517420.45	7776445.75	123	-60	9	1	0.009	9	42
Jolly Roger	TBRB0646	RAB	517623.89	7776048.27	123	-60	3	3	0.009	9	39
Jolly Roger	TBRB0666	RAB	517185.73	7775873.87	123	-60	9	1	0.009	9	33
Jolly Roger	TBRB0638	RAB	517380.75	7776475.67	123	-60	6	9	0.008	8	33
Jolly Roger	TBRB0670	RAB	517024.87	7775992.43	123	-60	6	9	0.008	8	30
Jolly Roger	TBRB0634	RAB	517541.62	7776357.10	123	-60	6	9	0.007	7	42
Jolly Roger	TBRB0648	RAB	517463.03	7776166.84	123	-60	2	2	0.007	7	33
Jolly Roger	TBRB0660	RAB	517587.87	7775578.00	123	-60	3	3	0.007	7	33
Jolly Roger	TBRB0665	RAB	517225.42	7775843.95	123	-60	1	1	0.007	7	30
Jolly Roger	TBRB0667	RAB	517146.04	7775903.78	123	-60	9	1	0.007	7	36
Jolly Roger	TBRB0672	RAB	517630.44	7775297.98	123	-60	1	2	0.007	7	33
Jolly Roger	TBRB0674	RAB	517469.59	7775416.55	123	-60	3	6	0.007	7	33
Jolly Roger	TBRB0633	RAB	517581.31	7776327.18	123	-60	1	1	0.006	6	33
Jolly Roger	TBRB0649	RAB	517423.33	7776196.76	123	-60	2	3	0.006	6	30
Jolly Roger	TBRB0661	RAB	517508.49	7775636.73	123	-60	6	9	0.006	6	33
Jolly Roger	TBRB0662	RAB	517427.01	7775696.57	123	-60	6	9	0.006	6	33
Jolly Roger	TBRB0668	RAB	517106.34	7775933.70	123	-60	1	1	0.006	6	36
Jolly Roger	TBRB0562	RAB	516905.55	7775832.09	123	-60	3	6	0.005	5	40
Jolly Roger	TBRB0632	RAB	517622.05	7776298.37	123	-60	3	6	0.005	5	33
Jolly Roger	TBRB0647	RAB	517543.46	7776107.01	123	-60	2	3	0.005	5	30
Jolly Roger	TBRB0650	RAB	517383.64	7776225.57	123	-60	6	9	0.005	5	39
Jolly Roger	TBRB0669	RAB	517064.56	7775963.62	123	-60	1	2	0.005	5	36
Jolly Roger	TBRB0636	RAB	517460.14	7776416.94	123	-60	9	1	0.004	4	30
Jolly Roger	TBRB0644	RAB	517785.79	7775929.70	123	-60	3	6	0.004	4	36
Jolly Roger	TBRB0664	RAB	517266.16	7775815.13	123	-60	1	1	0.004	4	30
Jolly Roger	TBRB0673	RAB	517551.06	7775357.82	123	-60	1	1	0.004	4	30
Jolly Roger	TBRB0116	RAB	517384.44	7775975.48	0	-90	1	1	0.003	3	24
Jolly Roger	TBRB0630	RAB	517703.52	7776238.53	123	-60	2	3	0.003	3	33
Jolly Roger	TBRB0642	RAB	517946.64	7775811.13	123	-60	2	2	0.003	3	42
Jolly Roger	TBRB0663	RAB	517346.59	7775755.30	123	-60	1	1	0.002	2	30
Jolly Roger	TBRB0115	RAB	517465.91	7775916.74	0	-90	1	2	0.002	2	27
Jolly Roger	TBRB0678	RAB	517146.84	7775653.69	123	-60	2	3	0.001	1	30
Jolly Roger	TBRB0117	RAB	517304.01	7776035.31	0	-90	1	2	-0.001	-1	21
Jolly Roger	WV0299	VAC	517633.74	7775460.65	0	-90	1	1	0.009	9	11.9
Jolly Roger	WV0298	VAC	517543.77	7775385.49	0	-90	1	5	0.002	2	5.7
Jolly Roger	WV0339	VAC	517592.55	7776070.44	0	-90	9	1	0.001	1	11.6
Jolly Roger	WV0338	VAC	517728.43	7776065.87	0	-90	0	0.5	0.000	0	0.5
Landlubber	OPRB0549	BRAB	516133.29	7767065.04	266	-60	9	12	1.23	1230	90
Landlubber	OPRB0542	BRAB	515983.86	7768165.17	266	-60	24	27	1.22	1220	69
Landlubber	OPRB0531	BRAB	515883.79	7768415.36	266	-60	33	36	0.423	423	81
Landlubber	OPRB0609	BRAB	516032.51	7767664.93	266	-60	18	20	0.148	148	20

Prospect	Hole ID	Hole Type	Easting (m)	Northing (m)	Azimuth (degrees)	Inclination (degrees)	Depth From (m)	Depth To (m)	Maximum Au ppm (g/t)	Maximum Au ppb	Hole Depth (m)
Landlubber	OPR0525	BRAB	515783.71	7768665.55	266	-60	66	69	0.092	92	81
Landlubber	OPR0522	BRAB	515482.79	7768665.82	266	-60	51	54	0.079	79	84
Landlubber	OPR0539	BRAB	515683.99	7768165.44	266	-60	78	81	0.078	78	81
Landlubber	OPR0532	BRAB	515984.09	7768415.27	266	-60	30	33	0.059	59	38
Landlubber	OPR0530	BRAB	515783.48	7768415.45	266	-60	78	81	0.037	37	81
Landlubber	OPR0540	BRAB	515783.25	7768165.35	266	-60	24	27	0.033	33	81
Landlubber	OPR0528	BRAB	515583.91	7768415.63	266	-60	66	69	0.026	26	81
Landlubber	OPR0538	BRAB	515583.69	7768165.53	266	-60	78	81	0.025	25	81
Landlubber	OPR0523	BRAB	515584.14	7768665.73	266	-60	66	69	0.021	21	81
Landlubber	OPR0608	BRAB	515933.25	7767665.02	266	-60	51	54	0.015	15	58
Landlubber	OPR0529	BRAB	515684.22	7768415.54	266	-60	54	57	0.012	12	81
Landlubber	OPR0524	BRAB	515684.44	7768665.64	266	-60	63	66	0.011	11	81
Landlubber	OPR0550	BRAB	516233.59	7767064.95	266	-60	24	28	0.011	11	38
Landlubber	OPR0541	BRAB	515883.56	7768165.26	266	-60	0	3	0.007	7	87
Landlubber	OPR0527	BRAB	515484.65	7768415.72	266	-60	72	75	0.006	6	81
Landlubber	OPR0607	BRAB	515832.95	7767665.11	266	-60	0	3	0.006	6	81
Landlubber	OPR0236	RAB	515921.54	7768573.57	81.43	-60	19	22	0.012	12	22
Landlubber	OPR0324	RAB	515922.41	7768373.27	81.43	-60	4	7	0.008	8	13
Landlubber	OPR0237	RAB	515871.39	7768573.62	81.43	-60	10	13	0.006	6	19
Landlubber	OPR0245	RAB	515470.16	7768569.55	81.43	-60	0	3	0.004	4	13
Landlubber	WRB0088	RAB	515614.42	7768645.78	356	-90	15	18	0.004	4	18
Landlubber	OPR0239	RAB	515771.08	7768572.60	81.43	-60	19	22	0.003	3	31
Landlubber	OPR0242	RAB	515621.67	7768571.63	81.43	-60	16	19	0.003	3	19
Landlubber	OPR0326	RAB	515822.10	7768373.36	81.43	-60	4	7	0.003	3	13
Landlubber	OPR0241	RAB	515670.78	7768571.59	81.43	-60	16	19	0.002	2	19
Landlubber	OPR0323	RAB	515972.56	7768374.33	81.43	-60	10	13	0.002	2	13
Landlubber	OPR0327	RAB	515771.95	7768372.30	81.43	-60	10	13	0.002	2	13
Landlubber	OPR0238	RAB	515821.24	7768572.56	81.43	-60	13	16	0.001	1	16
Landlubber	OPR0240	RAB	515720.93	7768571.54	81.43	-60	16	19	0.001	1	19
Landlubber	OPR0243	RAB	515569.42	7768570.57	81.43	-60	10	13	0.001	1	19
Landlubber	OPR0325	RAB	515872.25	7768373.32	81.43	-60	10	13	0.001	1	13
Landlubber	OPR0244	RAB	515520.32	7768570.62	81.43	-60	10	13	-0.001	-1	13
Landlubber	OPV0252	VAC	515574.29	7768171.08	356	-90	1	5	0.03	30	5
Landlubber	OPV1197	VAC	516156.38	7767175.68	356	-90	4.9	5.2	0.009	9	5.2
Landlubber	OPV1462	VAC	516003.26	7767674.92	356	-90	3.1	3.4	0.007	7	3.4
Landlubber	OPV2140	VAC	515724.66	7768072.45	356	-90	3.1	3.4	0.006	6	3.4
Landlubber	OPV2150	VAC	515974.37	7768074.43	356	-90	3.1	3.4	0.006	6	3.4
Landlubber	OPV1145	VAC	516182.41	7767076.06	356	-90	3.1	3.4	0.005	5	3.4
Landlubber	OPV1287	VAC	516055.22	7767374.97	356	-90	1.3	1.6	0.005	5	1.6
Landlubber	OPV1385	VAC	516054.36	7767575.27	356	-90	4.9	5.2	0.005	5	5.2
Landlubber	OPV2221	VAC	516023.57	7768175.09	356	-90	4.9	5.2	0.005	5	5.2
Landlubber	OPV2238	VAC	515599.37	7768171.05	356	-90	3.1	3.4	0.005	5	3.4
Landlubber	OPV1291	VAC	516155.52	7767375.99	356	-90	3.6	3.9	0.004	4	3.9
Landlubber	OPV1460	VAC	516053.41	7767674.87	356	-90	3.1	3.4	0.004	4	3.4
Landlubber	OPV2099	VAC	516026.52	7767974.79	356	-90	3.1	3.4	0.004	4	3.4
Landlubber	OPV2146	VAC	515875.11	7768073.42	356	-90	3.1	3.4	0.004	4	3.4
Landlubber	OPV2224	VAC	515949.39	7768174.05	356	-90	4.9	5.2	0.004	4	5.2
Landlubber	OPV2225	VAC	515923.27	7768174.08	356	-90	3.1	3.4	0.004	4	3.4
Landlubber	OPV2227	VAC	515873.11	7768173.02	356	-90	3.1	3.4	0.004	4	3.4
Landlubber	OPV0181	VAC	515771.08	7768572.60	356	-90	1	5	0.003	3	5
Landlubber	OPV0248	VAC	515973.42	7768174.03	356	-90	1	5	0.003	3	5
Landlubber	OPV0251	VAC	515673.55	7768172.09	356	-90	1	5	0.003	3	5
Landlubber	OPV1360	VAC	516104.42	7767475.63	356	-90	4.9	5.2	0.003	3	5.2
Landlubber	OPV1361	VAC	516079.35	7767474.55	356	-90	6.7	7	0.003	3	7
Landlubber	OPV1362	VAC	516054.27	7767474.57	356	-90	12.1	12.4	0.003	3	12.4
Landlubber	OPV1364	VAC	516004.12	7767474.62	356	-90	2.7	3	0.003	3	3
Landlubber	OPV1465	VAC	515926.99	7767673.88	356	-90	1.3	1.6	0.003	3	1.6
Landlubber	OPV1987	VAC	515977.23	7767774.54	356	-90	4.9	5.2	0.003	3	5.2
Landlubber	OPV2100	VAC	516000.40	7767974.81	356	-90	3.1	3.4	0.003	3	3.4
Landlubber	OPV2108	VAC	515800.84	7767972.78	356	-90	3.1	3.4	0.003	3	3.4
Landlubber	OPV2137	VAC	515649.43	7768071.41	356	-90	3.1	3.4	0.003	3	3.4
Landlubber	OPV2222	VAC	515999.54	7768174.01	356	-90	4.9	5.2	0.003	3	5.2
Landlubber	OPV2223	VAC	515973.42	7768174.03	356	-90	4.9	5.2	0.003	3	5.2
Landlubber	OPV2228	VAC	515849.08	7768173.04	356	-90	3.1	3.4	0.003	3	3.4
Landlubber	OPV2234	VAC	515699.67	7768172.07	356	-90	3.1	3.4	0.003	3	3.4
Landlubber	OPV2235	VAC	515673.55	7768172.09	356	-90	3.1	3.4	0.003	3	3.4
Landlubber	OPV2239	VAC	515574.29	7768171.08	356	-90	3.1	3.4	0.003	3	3.4
Landlubber	OPV2240	VAC	515549.21	7768171.10	356	-90	3.1	3.4	0.003	3	3.4
Landlubber	OPV0180	VAC	515670.78	7768571.59	356	-90	1	5	0.002	2	5
Landlubber	OPV0249	VAC	515873.11	7768173.02	356	-90	1	5	0.002	2	5
Landlubber	OPV1266	VAC	516206.62	7767276.34	356	-90	3.1	3.4	0.002	2	3.4

Prospect	Hole ID	Hole Type	Easting (m)	Northing (m)	Azimuth (degrees)	Inclination (degrees)	Depth From (m)	Depth To (m)	Maximum Au ppm (g/t)	Maximum Au ppb	Hole Depth (m)
Landlubber	OPV1270	VAC	516106.32	7767275.33	356	-90	4.9	5.2	0.002	2	5.2
Landlubber	OPV1273	VAC	516031.10	7767274.29	356	-90	1.3	1.6	0.002	2	1.6
Landlubber	OPV1285	VAC	516005.07	7767373.91	356	-90	2.1	2.4	0.002	2	2.4
Landlubber	OPV1363	VAC	516030.24	7767474.59	356	-90	3.1	3.4	0.002	2	3.4
Landlubber	OPV1365	VAC	515980.09	7767474.64	356	-90	3.1	3.4	0.002	2	3.4
Landlubber	OPV1366	VAC	515953.97	7767473.55	356	-90	3.1	3.4	0.002	2	3.4
Landlubber	OPV1467	VAC	515877.88	7767673.92	356	-90	2.9	3.2	0.002	2	3.2
Landlubber	OPV1469	VAC	515827.73	7767672.86	356	-90	3.1	3.4	0.002	2	3.4
Landlubber	OPV1470	VAC	515802.66	7767672.89	356	-90	3.1	3.4	0.002	2	3.4
Landlubber	OPV1513	VAC	516158.28	7766975.38	356	-90	3.1	3.4	0.002	2	3.4
Landlubber	OPV1984	VAC	516051.41	7767774.47	356	-90	4.9	5.2	0.002	2	5.2
Landlubber	OPV2015	VAC	515751.64	7767872.13	356	-90	3.1	3.4	0.002	2	3.4
Landlubber	OPV2026	VAC	516026.43	7767874.09	356	-90	4.9	5.2	0.002	2	5.2
Landlubber	OPV2101	VAC	515976.37	7767973.73	356	-90	4.9	5.2	0.002	2	5.2
Landlubber	OPV2104	VAC	515900.10	7767973.80	356	-90	3.1	3.4	0.002	2	3.4
Landlubber	OPV2109	VAC	515774.72	7767972.81	356	-90	3.1	3.4	0.002	2	3.4
Landlubber	OPV2110	VAC	515750.69	7767972.83	356	-90	3.1	3.4	0.002	2	3.4
Landlubber	OPV2136	VAC	515625.40	7768071.43	356	-90	3.1	3.4	0.002	2	3.4
Landlubber	OPV2139	VAC	515699.58	7768072.47	356	-90	3.1	3.4	0.002	2	3.4
Landlubber	OPV2141	VAC	515749.73	7768072.43	356	-90	3.1	3.4	0.002	2	3.4
Landlubber	OPV2142	VAC	515774.81	7768072.40	356	-90	3.1	3.4	0.002	2	3.4
Landlubber	OPV2226	VAC	515899.24	7768174.10	356	-90	3.1	3.4	0.002	2	3.4
Landlubber	OPV2229	VAC	515824.01	7768173.06	356	-90	3.1	3.4	0.002	2	3.4
Landlubber	OPV2237	VAC	515623.40	7768171.03	356	-90	3.1	3.4	0.002	2	3.4
Landlubber	OPV2241	VAC	515524.14	7768170.01	356	-90	3.1	3.4	0.002	2	3.4
Landlubber	OPV0178	VAC	515470.16	7768569.55	356	-90	1	5	0.001	1	5
Landlubber	OPV0179	VAC	515569.42	7768570.57	356	-90	1	5	0.001	1	5
Landlubber	OPV0182	VAC	515871.39	7768573.62	356	-90	1	5	0.001	1	5
Landlubber	OPV0250	VAC	515773.85	7768172.00	356	-90	1	5	0.001	1	5
Landlubber	OPV0274	VAC	515877.97	7767773.52	356	-90	1	5	0.001	1	5
Landlubber	OPV0275	VAC	515977.23	7767774.54	356	-90	1	5	0.001	1	5
Landlubber	OPV0339	VAC	516079.25	7767374.95	356	-90	1	5	0.001	1	5
Landlubber	OPV0369	VAC	516183.36	7766975.36	356	-90	1	5	0.001	1	5
Landlubber	OPV1198	VAC	516182.50	7767175.66	356	-90	8.5	8.8	0.001	1	8.8
Landlubber	OPV1269	VAC	516131.40	7767275.30	356	-90	3.1	3.4	0.001	1	3.4
Landlubber	OPV1271	VAC	516081.25	7767275.35	356	-90	2.7	3	0.001	1	3
Landlubber	OPV1286	VAC	516030.15	7767374.99	356	-90	2.5	2.8	0.001	1	2.8
Landlubber	OPV1461	VAC	516027.29	7767674.89	356	-90	3.1	3.4	0.001	1	3.4
Landlubber	OPV1464	VAC	515953.11	7767673.86	356	-90	1.3	1.6	0.001	1	1.6
Landlubber	OPV1466	VAC	515902.96	7767673.90	356	-90	1.3	1.6	0.001	1	1.6
Landlubber	OPV1468	VAC	515852.81	7767672.84	356	-90	1.3	1.6	0.001	1	1.6
Landlubber	OPV1512	VAC	516183.36	7766975.36	356	-90	3.1	3.4	0.001	1	3.4
Landlubber	OPV1539	VAC	516234.46	7766875.72	356	-90	1.3	1.6	0.001	1	1.6
Landlubber	OPV1985	VAC	516027.38	7767774.49	356	-90	3.1	3.4	0.001	1	3.4
Landlubber	OPV2017	VAC	515801.79	7767873.19	356	-90	3.1	3.4	0.001	1	3.4
Landlubber	OPV2018	VAC	515825.82	7767873.16	356	-90	3.1	3.4	0.001	1	3.4
Landlubber	OPV2020	VAC	515875.98	7767873.12	356	-90	4.9	5.2	0.001	1	5.2
Landlubber	OPV2024	VAC	515976.28	7767874.13	356	-90	1.8	5.2	0.001	1	5.2
Landlubber	OPV2102	VAC	515950.25	7767973.75	356	-90	4.9	5.2	0.001	1	5.2
Landlubber	OPV2103	VAC	515925.17	7767973.78	356	-90	4.9	5.2	0.001	1	5.2
Landlubber	OPV2105	VAC	515875.02	7767973.82	356	-90	3.1	3.4	0.001	1	3.4
Landlubber	OPV2106	VAC	515850.99	7767972.74	356	-90	3.1	3.4	0.001	1	3.4
Landlubber	OPV2111	VAC	515724.57	7767971.75	356	-90	3.1	3.4	0.001	1	3.4
Landlubber	OPV2138	VAC	515675.55	7768071.39	356	-90	3.1	3.4	0.001	1	3.4
Landlubber	OPV2144	VAC	515824.96	7768073.47	356	-90	3.1	3.4	0.001	1	3.4
Landlubber	OPV2145	VAC	515848.99	7768073.44	356	-90	3.1	3.4	0.001	1	3.4
Landlubber	OPV2147	VAC	515899.14	7768073.40	356	-90	4.9	5.2	0.001	1	5.2
Landlubber	OPV2148	VAC	515925.27	7768073.37	356	-90	3.1	3.4	0.001	1	3.4
Landlubber	OPV2149	VAC	515949.30	7768074.46	356	-90	3.1	3.4	0.001	1	3.4
Landlubber	OPV2151	VAC	515999.45	7768074.41	356	-90	3.1	3.4	0.001	1	3.4
Landlubber	OPV2152	VAC	516024.53	7768074.39	356	-90	3.1	3.4	0.001	1	3.4
Landlubber	OPV2231	VAC	515773.85	7768172.00	356	-90	3.1	3.4	0.001	1	3.4
Landlubber	OPV2232	VAC	515749.82	7768172.02	356	-90	3.1	3.4	0.001	1	3.4
Landlubber	OPV2233	VAC	515723.70	7768172.05	356	-90	3.1	3.4	0.001	1	3.4
Landlubber	OPV2236	VAC	515649.52	7768171.01	356	-90	3.1	3.4	0.001	1	3.4
Landlubber	OPV2242	VAC	515498.02	7768170.04	356	-90	3.1	3.4	0.001	1	3.4
Landlubber	OPV0273	VAC	515777.67	7767772.51	356	-90	1	5	-0.001	-1	5
Landlubber	OPV0340	VAC	515980.00	7767373.93	356	-90	1	5	-0.001	-1	5
Landlubber	OPV1143	VAC	516232.56	7767076.02	356	-90	4.9	5.2	-0.001	-1	5.2
Landlubber	OPV1144	VAC	516207.48	7767076.04	356	-90	3.1	3.4	-0.001	-1	3.4
Landlubber	OPV1146	VAC	516158.38	7767076.09	356	-90	3.1	3.4	-0.001	-1	3.4
Landlubber	OPV1147	VAC	516132.26	7767075.00	356	-90	3.1	3.4	-0.001	-1	3.4
Landlubber	OPV1148	VAC	516108.23	7767075.03	356	-90	1.3	1.6	-0.001	-1	1.6



Prospect	Hole ID	Hole Type	Easting (m)	Northing (m)	Azimuth (degrees)	Inclination (degrees)	Depth From (m)	Depth To (m)	Maximum Au ppm (g/t)	Maximum Au ppb	Hole Depth (m)
Landlubber	OPV1194	VAC	516082.20	7767174.65	356	-90	1.2	1.5	-0.001	-1	1.5
Landlubber	OPV1195	VAC	516106.23	7767175.73	356	-90	1.3	1.6	-0.001	-1	1.6
Landlubber	OPV1196	VAC	516132.35	7767175.71	356	-90	3.1	3.4	-0.001	-1	3.4
Landlubber	OPV1199	VAC	516206.53	7767175.64	356	-90	4.9	5.2	-0.001	-1	5.2
Landlubber	OPV1200	VAC	516232.65	7767176.72	356	-90	4.9	5.2	-0.001	-1	5.2
Landlubber	OPV1267	VAC	516180.51	7767276.37	356	-90	3.1	3.4	-0.001	-1	3.4
Landlubber	OPV1268	VAC	516156.47	7767275.28	356	-90	3.1	3.4	-0.001	-1	3.4
Landlubber	OPV1272	VAC	516057.22	7767274.27	356	-90	1.3	1.6	-0.001	-1	1.6
Landlubber	OPV1284	VAC	515980.00	7767373.93	356	-90	2.2	2.5	-0.001	-1	2.5
Landlubber	OPV1288	VAC	516079.25	7767374.95	356	-90	4.9	5.2	-0.001	-1	5.2
Landlubber	OPV1289	VAC	516105.37	7767374.93	356	-90	3.1	3.4	-0.001	-1	3.4
Landlubber	OPV1290	VAC	516129.40	7767374.90	356	-90	4.9	5.2	-0.001	-1	5.2
Landlubber	OPV1378	VAC	515878.83	7767573.22	356	-90	2.8	3.1	-0.001	-1	3.1
Landlubber	OPV1379	VAC	515903.91	7767573.20	356	-90	1.3	1.6	-0.001	-1	1.6
Landlubber	OPV1380	VAC	515928.99	7767574.28	356	-90	3.1	3.4	-0.001	-1	3.4
Landlubber	OPV1381	VAC	515954.06	7767574.26	356	-90	3.1	3.4	-0.001	-1	3.4
Landlubber	OPV1382	VAC	515978.09	7767574.24	356	-90	1	1.3	-0.001	-1	1.3
Landlubber	OPV1383	VAC	516004.21	7767574.21	356	-90	3	3.3	-0.001	-1	3.3
Landlubber	OPV1384	VAC	516028.24	7767574.19	356	-90	2.8	3.1	-0.001	-1	3.1
Landlubber	OPV1386	VAC	516078.39	7767575.25	356	-90	4.9	5.2	-0.001	-1	5.2
Landlubber	OPV1463	VAC	515977.14	7767673.83	356	-90	3.1	3.4	-0.001	-1	3.4
Landlubber	OPV1510	VAC	516233.51	7766976.42	356	-90	3.1	3.4	-0.001	-1	3.4
Landlubber	OPV1511	VAC	516209.48	7766976.44	356	-90	3.1	3.4	-0.001	-1	3.4
Landlubber	OPV1538	VAC	516209.38	7766875.74	356	-90	1.3	1.6	-0.001	-1	1.6
Landlubber	OPV1986	VAC	516001.26	7767774.51	356	-90	4.9	5.2	-0.001	-1	5.2
Landlubber	OPV1988	VAC	515952.16	7767773.45	356	-90	3.1	3.4	-0.001	-1	3.4
Landlubber	OPV1989	VAC	515927.08	7767773.48	356	-90	1.3	1.6	-0.001	-1	1.6
Landlubber	OPV1990	VAC	515902.00	7767773.50	356	-90	3.1	3.4	-0.001	-1	3.4
Landlubber	OPV1991	VAC	515877.97	7767773.52	356	-90	3.1	3.4	-0.001	-1	3.4
Landlubber	OPV1992	VAC	515851.85	7767773.54	356	-90	3.1	3.4	-0.001	-1	3.4
Landlubber	OPV1993	VAC	515827.82	7767772.46	356	-90	3.1	3.4	-0.001	-1	3.4
Landlubber	OPV1994	VAC	515801.70	7767772.48	356	-90	3.1	3.4	-0.001	-1	3.4
Landlubber	OPV1995	VAC	515777.67	7767772.51	356	-90	3.1	3.4	-0.001	-1	3.4
Landlubber	OPV2016	VAC	515776.72	7767872.10	356	-90	3.1	3.4	-0.001	-1	3.4
Landlubber	OPV2019	VAC	515851.94	7767873.14	356	-90	3.1	3.4	-0.001	-1	3.4
Landlubber	OPV2021	VAC	515902.10	7767873.10	356	-90	4.9	5.2	-0.001	-1	5.2
Landlubber	OPV2022	VAC	515926.13	7767874.18	356	-90	3.1	3.4	-0.001	-1	3.4
Landlubber	OPV2023	VAC	515952.25	7767874.16	356	-90	3.1	3.4	-0.001	-1	3.4
Landlubber	OPV2025	VAC	516001.35	7767874.11	356	-90	4.9	5.2	-0.001	-1	5.2
Landlubber	OPV2027	VAC	516051.51	7767875.17	356	-90	4.9	5.2	-0.001	-1	5.2
Landlubber	OPV2143	VAC	515798.84	7768072.38	356	-90	3.1	3.4	-0.001	-1	3.4
Landlubber	OPV2230	VAC	515798.93	7768173.09	356	-90	3.1	3.4	-0.001	-1	3.4
Marauder	TBRB0546	RAB	517533.75	7776852.88	119	-60	38	41	2.460	2460	45
Marauder	TBRB0545	RAB	517553.60	7776838.47	119	-60	5	8	0.410	410	45
Marauder	TBRB0544	RAB	517575.54	7776824.06	119	-60	0	2	0.320	320	45
Marauder	TBRB0138	RAB	517536.89	7776857.30	356	-90	6	9	0.308	308	12
Marauder	TBRB0541	RAB	517546.36	7776912.62	119	-60	41	44	0.240	240	45
Marauder	WRB0045	RAB	517483.78	7777055.44	356	-90	21	24	0.190	190	24
Marauder	TBRB0550	RAB	517548.32	7776787.57	119	-60	0	2	0.051	51	45
Marauder	TBRB0547	RAB	517513.91	7776868.39	119	-60	41	44	0.044	44	45
Marauder	TBRB0538	RAB	517606.94	7776868.29	119	-60	2	5	0.027	27	45
Marauder	TBRB0548	RAB	517494.06	7776882.79	119	-60	32	35	0.023	23	45
Marauder	TBRB0552	RAB	517507.58	7776817.49	119	-60	29	32	0.020	20	45
Marauder	TBRB0539	RAB	517587.10	7776882.70	119	-60	41	44	0.018	18	45
Marauder	TBRB0549	RAB	517568.17	7776772.06	119	-60	24	26	0.017	17	45
Marauder	TBRB0542	RAB	517526.51	7776927.03	119	-60	35	38	0.009	9	45
Marauder	TBRB0551	RAB	517527.43	7776801.98	119	-60	2	5	0.008	8	45
Marauder	TBRB0553	RAB	517487.74	7776831.90	119	-60	29	32	0.008	8	45
Marauder	TBRB0543	RAB	517506.66	7776941.43	119	-60	11	14	0.005	5	45
Marauder	TBRB0540	RAB	517566.20	7776897.11	119	-60	41	44	0.003	3	45
Marauder	TBC0001	TRENCH	517577.63	7776827.38	284	0	26	27	2.540	2540	100
Marauder	TBC0002	TRENCH	517593.34	7776849.50	284	0	15	16	0.510	510	100
Marauder	TBC0003	TRENCH	517603.72	7776778.66	284	0	45	46	0.096	96	150
Marauder	TBC0001D	TRENCH	517593.30	7776817.40	284	0	11	12	0.040	40	20
Marauder	TBV0037	VAC	517556.74	7776842.89	356	-90	4.9	5.2	0.220	220	5.2
Marauder	TBV0038	VAC	517536.89	7776857.30	356	-90	0	0.2	0.077	77	3.4
Marauder	TBV0039	VAC	517517.05	7776871.71	356	-90	0	0.2	0.050	50	3.4
Marauder	TBV0035	VAC	517597.48	7776812.97	356	-90	3.1	3.4	0.007	7	3.4
Marauder	TBV0036	VAC	517577.63	7776827.38	356	-90	3.1	3.4	0.003	3	3.4
Marauder	TBV0402	VAC	517475.39	7777026.67	356	-90	3.3	3.5	0.002	2	3.5

Prospect	Hole ID	Hole Type	Easting (m)	Northing (m)	Azimuth (degrees)	Inclination (degrees)	Depth From (m)	Depth To (m)	Maximum Au ppm (g/t)	Maximum Au ppb	Hole Depth (m)
Marauder	TBV0405	VAC	517537.02	7776982.35	356	-90	3.3	3.5	0.002	2	3.5
Marauder	TBV0407	VAC	517576.71	7776952.43	356	-90	4.9	5.2	0.002	2	5.2
Marauder	TBV0404	VAC	517515.08	7776996.75	356	-90	3.3	3.5	0.001	1	3.5
Marauder	TBV0409	VAC	517616.41	7776922.51	356	-90	3.3	3.5	0.001	1	3.5
Marauder	TBV0040	VAC	517496.15	7776887.22	356	-90	0	0.2	-0.001	-1	3.4
Marauder	TBV0403	VAC	517495.23	7777012.27	356	-90	1.5	1.8	-0.001	-1	1.8
Marauder	TBV0406	VAC	517556.87	7776967.94	356	-90	3.3	3.5	-0.001	-1	3.5
Marauder	TBV0408	VAC	517596.56	7776938.02	356	-90	3.3	3.5	-0.001	-1	3.5
Mavericks	MVAR0011	RAB	505816.00	7786867.02	90	-60	30	32	0.390	390	63
Mavericks	MVAR0018	RAB	506064.60	7786832.26	270	-60	44	46	0.180	180	70
Mavericks	MVAR0001	RAB	506221.53	7786149.98	90	-60	10	11	0.160	160	66
Mavericks	MVAR0014	RAB	506215.98	7786621.68	90	-60	2	4	0.130	130	66
Mavericks	MVAR0003	RAB	506170.10	7786181.30	90	-60	44	45	0.110	110	67
Mavericks	MVAR0021	RAB	506000.34	7786929.72	90	-60	50	52	0.070	70	67
Mavericks	MVAR0012	RAB	506110.48	7787272.64	90	-60	62	64	0.060	60	72
Mavericks	MVAR0013	RAB	506093.33	7787283.08	90	-60	50	52	0.060	60	72
Mavericks	MVAR0004	RAB	506144.39	7786196.96	90	-60	0	1	0.050	50	67
Mavericks	MVAR0005	RAB	506118.68	7786212.62	90	-60	56	57	0.050	50	60
Mavericks	MVAR0015	RAB	506190.27	7786637.34	90	-60	56	58	0.050	50	66
Mavericks	MVAR0020	RAB	506017.48	7786919.28	90	-60	14	16	0.030	30	64
Mavericks	MVAR0002	RAB	506195.82	7786165.64	90	-60	42	43	0.010	10	47
Mavericks	MVAR0006	RAB	505943.14	7786788.72	90	-60	40	41	0.010	10	62
Mavericks	MVAR0007	RAB	505917.42	7786804.38	90	-60	32	33	0.010	10	64
Mavericks	MVAR0016	RAB	506030.32	7786853.14	270	-60	46	48	0.010	10	64
Mavericks	MVAR0017	RAB	506043.17	7786845.31	270	-60	32	34	0.010	10	61
Mavericks	MVAR0019	RAB	506034.62	7786908.84	90	-60	52	54	0.010	10	64
Mavericks	MVAR0009	RAB	505867.43	7786835.70	90	-60	60	61	0.004	4	61
Mavericks	MVAR0008	RAB	505891.71	7786820.04	90	-60	60	61	0.001	1	61
Mavericks	MVAR0010	RAB	505841.71	7786851.36	90	-60	62	63	0.001	1	63
Pearl	WRB0269	RAB	512458.05	7776166.72	86	-60	6	7	0.006	6	70
Pearl	WRB0196	RAB	512808.51	7776544.92	0	-90	2	2	0.002	2	39
Pearl	WRB0268	RAB	512572.00	7776175.49	86	-60	3	3	0.001	1	37
Pearl	WRB0197	RAB	512808.44	7776445.33	0	-90	34	35	-0.001	-1	35
Pearl	WRB0195	RAB	512808.58	7776645.63	0	-90	4	4	-0.001	-1	45
Pearl	WRB0267	RAB	512831.40	7776399.94	176	-60	3	5	-0.001	-1	5
Rum	TBRB0575	RAB	516109.70	7775424.50	123	-60	2	2	0.120	120	36
Rum	WRB0009	RAB	516283.29	7775505.12	0	-90	1	1	0.067	67	39
Rum	TBRB0573	RAB	516269.51	7775305.94	123	-60	1	1	0.040	40	40
Rum	TBRB0108	RAB	516347.28	7775746.30	0	-90	2	3	0.037	37	30
Rum	TBRB0126	RAB	516579.07	7776569.41	0	-90	2	2	0.033	33	36
Rum	TBRB0574	RAB	516190.13	7775365.77	123	-60	1	1	0.028	28	34
Rum	TBRB0107	RAB	516427.71	7775687.58	0	-90	1	1	0.020	20	24
Rum	TBRB0571	RAB	516431.42	7775187.38	123	-60	8	1	0.020	20	39
Rum	TBRB0566	RAB	516583.82	7776069.21	123	-60	2	2	0.020	20	30
Rum	TBRB0582	RAB	515796.47	7774662.33	123	-60	1	1	0.015	15	51
Rum	TBRB0567	RAB	516503.39	7776127.94	123	-60	1	1	0.012	12	36
Rum	TBRB0583	RAB	515715.00	7774721.05	123	-60	1	1	0.011	11	45
Rum	TBRB0576	RAB	516029.27	7775484.33	123	-60	1	1	0.011	11	19
Rum	TBRB0078	RAB	515398.06	7774459.07	0	-90	1	1	0.010	10	18
Rum	TBRB0568	RAB	516424.00	7776187.77	123	-60	2	3	0.010	10	39
Rum	TBRB0095	RAB	515873.17	7775102.69	0	-90	2	2	0.007	7	27
Rum	TBRB0579	RAB	516037.75	7774483.94	123	-60	2	3	0.007	7	39
Rum	TBRB0581	RAB	515876.90	7774602.50	123	-60	2	2	0.006	6	45
Rum	TBRB0570	RAB	516262.09	7776306.33	123	-60	1	1	0.006	6	31
Rum	TBRB0109	RAB	516265.80	7775806.14	0	-90	2	2	0.006	6	27
Rum	TBRB0572	RAB	516350.99	7775247.22	123	-60	1	1	0.005	5	40
Rum	TBRB0569	RAB	516342.52	7776246.50	123	-60	9	1	0.004	4	31
Rum	TBRB0094	RAB	515952.56	7775042.86	0	-90	2	2	0.003	3	24
Rum	TBRB0093	RAB	516034.03	7774984.14	0	-90	2	2	0.002	2	30
Rum	TBRB0580	RAB	515956.28	7774543.77	123	-60	2	3	0.002	2	39
Rum	TBRB0124	RAB	516740.98	7776450.85	0	-90	1	2	0.001	1	21
Rum	TBRB0092	RAB	516113.42	7774924.30	0	-90	3	3	-0.001	-1	36
Rum	TBRB0091	RAB	516193.85	7774865.58	0	-90	3	3	-0.001	-1	33
Rum	TBRB0090	RAB	516275.32	7774805.75	0	-90	3	3	-0.001	-1	33
Rum	TBRB0125	RAB	516659.50	7776509.58	0	-90	3	3	-0.001	-1	36

Explanatory notes: Prospect = the prospect areas as defined by the red-outline on the individual maps presented in this report. BRAB = Blade Rotary Air Blast drilling, RAB = Rotary Air Blast drilling; RH = Rotary Air Blast Hammer drilling, RC = Reverse Circulation drilling, AC = Aircore Drilling; VAC = Vacuum Hole; Maximum Au ppm / ppb = the maximum gold grade in the drill hole in parts per million (1ppm = 1g/t) and parts per billion (10ppb = 0.01g/t). Assays compiled from a database supplied by Newmont Asia Pacific and should be considered historic and indicative only as in most cases samples are no longer available for re-checking. Gold assayed using both fire assay and aqua-regia techniques and processed at various laboratories. Negative assays or zero indicates that the sample was below the detection limit for gold.

Appendix 2. Rock Sample Gold Results

Prospect	Sample Type	Northing (m)	Easting (m)	Au ppm	Au ppb
Bandit	ROCK	7767194.39	518141.90	12.99	12990
Bandit	ROCK	7767136.39	518173.24	1.18	1180
Bandit	ROCK	7767190.39	518187.57	1	1000
Bandit	ROCK	7767193.39	518146.18	0.752	752
Bandit	ROCK	7767340.39	518144.91	0.5	500
Bandit	ROCK	7767189.39	518186.14	0.42	420
Bandit	ROCK	7767112.39	518168.93	0.3	300
Bandit	ROCK	7767243.39	518131.96	0.147	147
Bandit	ROCK	7767989.39	518186.98	0.132	132
Bandit	ROCK	7766478.39	518171.12	0.102	102
Bandit	ROCK	7767881.39	518084.10	0.092	92
Bandit	ROCK	7766947.39	518195.88	0.084	84
Bandit	ROCK	7767229.39	518097.70	0.064	64
Bandit	ROCK	7767710.51	517988.30	0.06	60
Bandit	ROCK	7767504.39	518107.97	0.023	23
Bandit	ROCK	7767933.39	518119.84	0.02	20
Bandit	ROCK	7767000.39	518278.71	0.019	19
Bandit	ROCK	7767467.39	518085.10	0.016	16
Bandit	ROCK	7767499.39	518106.54	0.015	15
Bandit	ROCK	7767654.39	518052.47	0.013	13
Bandit	ROCK	7767624.39	518168.04	0.011	11
Bandit	ROCK	7766671.39	518224.13	0.01	10
Bandit	ROCK	7767273.39	518122.01	0.008	8
Bandit	ROCK	7767908.39	518211.16	0.008	8
Bandit	ROCK	7766065.39	518183.54	0.0041	4.1
Bandit	ROCK	7766551.39	518191.18	0.004	4
Bandit	ROCK	7767729.39	518158.16	0.003	3
Bandit	ROCK	7766515.39	518184.01	0.0029	2.9
Bandit	ROCK	7767103.39	518183.20	0.001	1
Black Cat	ROCK	7746922.02	500454.05	0.932	932
Black Cat	ROCK	7746867.41	500493.96	0.1341	134.1
Black Cat	ROCK	7746667.41	500878.84	0.053	53
Black Cat	ROCK	7746966.41	500358.54	0.014	14
Black Cat	ROCK	7746713.02	500836.08	0.014	14
Black Cat	ROCK	7746577.41	500848.90	0.0103	10.3
Black Cat	ROCK	7746806.41	500483.98	0.0095	9.5
Black Cat	ROCK	7746961.41	500367.09	0.007	7
Black Cat	ROCK	7746966.02	500334.30	0.006	6
Black Cat	ROCK	7746860.41	500512.49	0.0051	5.1
Black Cat	ROCK	7746930.02	500466.88	0.005	5
Black Cat	ROCK	7746866.02	500334.30	0.004	4
Black Cat	ROCK	7746667.41	500878.84	0.0024	2.4
Black Cat	ROCK	7746801.02	500716.34	0.002	2
Black Cat	ROCK	7746958.41	500550.98	0.0015	1.5
Black Cat	ROCK	7746745.41	500958.67	0.0013	1.3
Black Cat	ROCK	7746793.41	500392.75	0.0008	0.8
Black Cat	ROCK	7746806.41	500483.98	0.0006	0.6
Black Cat	ROCK	7746890.41	500528.17	0.0005	0.5
Black Cat	ROCK	7746890.41	500528.17	0.0005	0.5
Black Cat	ROCK	7746966.41	500358.54	0.00005	0.05
Black Cat	ROCK	7746880.02	500255.90	-0.001	-1
Fortune	ROCK	7775969.41	514151.44	1.12	1120
Fortune	ROCK	7775970.00	514150.02	0.62	620
Fortune	ROCK	7775891.00	514105.69	0.058	58
Fortune	ROCK	7775898.46	514112.83	0.05	50
Fortune	ROCK	7775876.91	514139.94	0.039	39
Fortune	ROCK	7775881.38	514148.52	0.036	36
Fortune	ROCK	7775950.93	514165.71	0.03	30
Fortune	ROCK	7775884.91	514117.10	0.016	16
Fortune	ROCK	7775946.14	514167.13	0.012	12
Fortune	ROCK	7775875.38	514151.37	0.012	12
Fortune	ROCK	7775956.20	514195.70	0.009	9
Fortune	ROCK	7776057.61	514265.75	0.005	5
Fortune	ROCK	7775941.05	514157.13	0.004	4
Fortune	ROCK	7776069.51	514278.61	0.004	4
Fortune	ROCK	7776027.04	514224.31	0.002	2
Fortune	ROCK	7775861.95	514121.37	0.002	2
Fortune	ROCK	7775892.16	514122.82	0.002	2
Fortune	ROCK	7775916.21	514107.13	0.001	1
Fortune	ROCK	7776066.92	514232.91	0.001	1



Prospect	Sample Type	Northing (m)	Easting (m)	Au ppm	Au ppb
Marauder	ROCK	7776842.46	517556.50	8.08	8080
Marauder	ROCK	7776856.66	517579.36	4.35	4350
Marauder	ROCK	7776857.84	517577.94	4.17	4170
Marauder	ROCK	7776853.09	517585.07	2.15	2150
Marauder	ROCK	7776838.89	517562.21	1.34	1340
Marauder	ROCK	7776794.75	517579.30	0.097	97
Marauder	ROCK	7776828.82	517575.05	0.061	61
Marauder	ROCK	7776857.32	517495.11	0.031	31
Marauder	ROCK	7776810.46	517557.90	0.02	20
Marauder	ROCK	7776863.21	517529.39	0.019	19
Marauder	ROCK	7776840.71	517517.94	0.019	19
Marauder	ROCK	7776777.86	517602.13	0.018	18
Marauder	ROCK	7776806.91	517563.60	0.016	16
Marauder	ROCK	7776895.79	517526.57	0.016	16
Marauder	ROCK	7776880.38	517547.97	0.012	12
Marauder	ROCK	7776826.47	517536.49	0.011	11
Marauder	ROCK	7776781.41	517597.85	0.011	11
Marauder	ROCK	7776809.88	517559.32	0.009	9
Marauder	ROCK	7776848.95	517590.78	0.007	7
Marauder	ROCK	7776873.83	517599.37	0.007	7
Marauder	ROCK	7776838.93	517519.37	0.004	4
Marauder	ROCK	7776827.08	517536.49	0.004	4
Marauder	ROCK	7776789.12	517587.86	0.004	4
Marauder	ROCK	7776818.43	517589.32	0.003	3
Marauder	ROCK	7776834.79	517525.08	0.002	2
Marauder	ROCK	7776807.50	517562.18	0.002	2
Marauder	ROCK	7776816.96	517592.17	0.002	2
Marauder	ROCK	7776880.97	517546.54	0.002	2
Marauder	ROCK	7776876.22	517553.68	0.002	2
Marauder	ROCK	7776861.96	517615.07	0.002	2
Marauder	ROCK	7776853.17	517500.82	0.001	1
Marauder	ROCK	7776838.34	517520.80	0.001	1
Marauder	ROCK	7776896.38	517526.57	0.001	1
Marauder	ROCK	7776848.42	517506.53	-0.001	-1
Marauder	ROCK	7776899.36	517522.28	-0.001	-1
Marauder	ROCK	7776865.25	517567.95	-0.001	-1
Mavericks	ROCK	7787180.61	506300.19	0.27	270
Mavericks	ROCK	7787289.27	506132.20	0.021	21
Mavericks	ROCK	7786990.97	506013.22	0.001	1
Mavericks	ROCK	7787202.70	506225.77	0	0
Mavericks	ROCK	7787217.91	506153.01	0	0
Mavericks	ROCK	7786881.87	506041.16	0	0
Mavericks	ROCK	7786864.81	506030.72	0	0
Mavericks	ROCK	7787008.23	506007.11	0	0
Mavericks	ROCK	7786950.62	506024.61	0	0
Mavericks	ROCK	7786893.26	506012.96	0	0
Mavericks	ROCK	7786721.90	505996.03	0	0
Mavericks	ROCK	7786697.01	505998.38	0	0
Mavericks	ROCK	7786659.96	506116.40	0	0
Mavericks	ROCK	7786648.97	505980.24	0	0
Mavericks	ROCK	7786792.97	506127.45	0	0
Mavericks	ROCK	7787101.97	506073.27	0	0
Mavericks	ROCK	7787071.97	506150.41	0	0
Mavericks	ROCK	7787082.97	506167.56	0	0
Mavericks	ROCK	7786873.97	506036.04	0	0
Mavericks	ROCK	7786881.97	506043.19	0	0
Mavericks	ROCK	7786771.97	505998.86	0	0
Pearl	ROCK	7776440.38	512948.05	0.001	1
Pearl	ROCK	7776180.38	512695.11	-0.001	-1

Rock Chip Sample Assays compiled from a database supplied by Newmont Asia Pacific and should be considered historic and indicative only as in most cases samples are no longer available for re-checking. Gold grades in parts per million (1ppm = 1g/t) and parts per billion (10ppb = 0.01g/t). Gold assayed using both fire assay and aqua-regia techniques and processed at various laboratories. Negative assays or zero indicates that the sample was below the detection limit for gold.