



# Cluff Resources Pacific NL

ABN 72 002 261 565

## ASX and MEDIA RELEASE

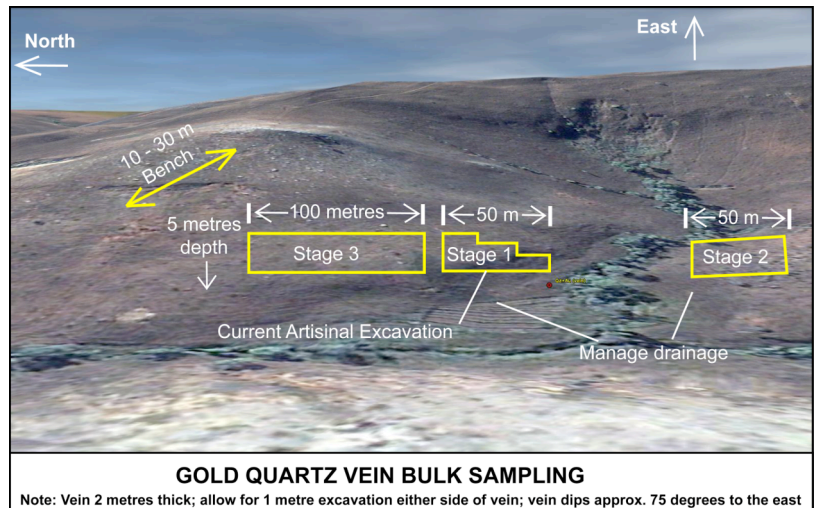
Wednesday 2 March 2011

### MADAGASCAR GOLD SAMPLE UPDATE

Cluff Resources Pacific NL (Cluff) announces today that the ALS Laboratory Group ("ALS") in Perth has not yet completed the analysis of the 564kg sample recently shipped back from Madagascar. Preparation has taken several days and we are advised that the first small sample analysis will not be available for a further five to seven days, however in any event it will be released as soon as it is received.

Yesterday the company's project manager for Madagascar, Mr Todd Axford, attended the offices and laboratories of ALS and Ammtec Limited in Perth to determine the progress with the testing. Ammtec has been retained to provide both a small and bulk sample analysis and processing recommendations. The procedures adopted for the testing by Ammtec are designed to ensure that an appropriate result can be obtained which produces a grade for the total sample. The final bulk analysis and processing report from Ammtec is not expected until the end of the month.

Cluff has continued to develop its operational plan for the Madagascan gold project and is undertaking initial implementation of this plan by engaging earthmoving contractors to commence operations at the end of the wet season, anticipated to be no later than mid April.



**Plan of the location of the first trenches on the Madagascar JV Ihoisy gold permit.**

The large sample which is the subject of the current analysis was taken from the southern end of the Stage 1 trench illustrated above. The joint venture provides for a production share of all gold produced on the permit of 35% to Cluff and 65% to Varun.

For further information contact:

Scott Enderby on Phone (02) 9247 2277 or Peter Ashcroft on (02) 9233 2153 or 0418 275 375

Email: [Cluff@bigpond.com](mailto:Cluff@bigpond.com)

Yours faithfully,

**Scott Enderby, Company Secretary / Executive Director**

**Registered Office:**  
Suite 21, Level 7,  
44 Bridge St. Sydney 2000  
Australia  
ASX Code: CFR

**Postal Address:**  
Suite 21, Level 7,  
44 Bridge St. Sydney 2000  
Australia

**Tele-Communications:**  
Tel: (612) 9247 2277  
Fax: (612) 9247 7055  
email: [Cluff@bigpond.com](mailto:Cluff@bigpond.com)  
Internet: [www.cluff.com.au](http://www.cluff.com.au)