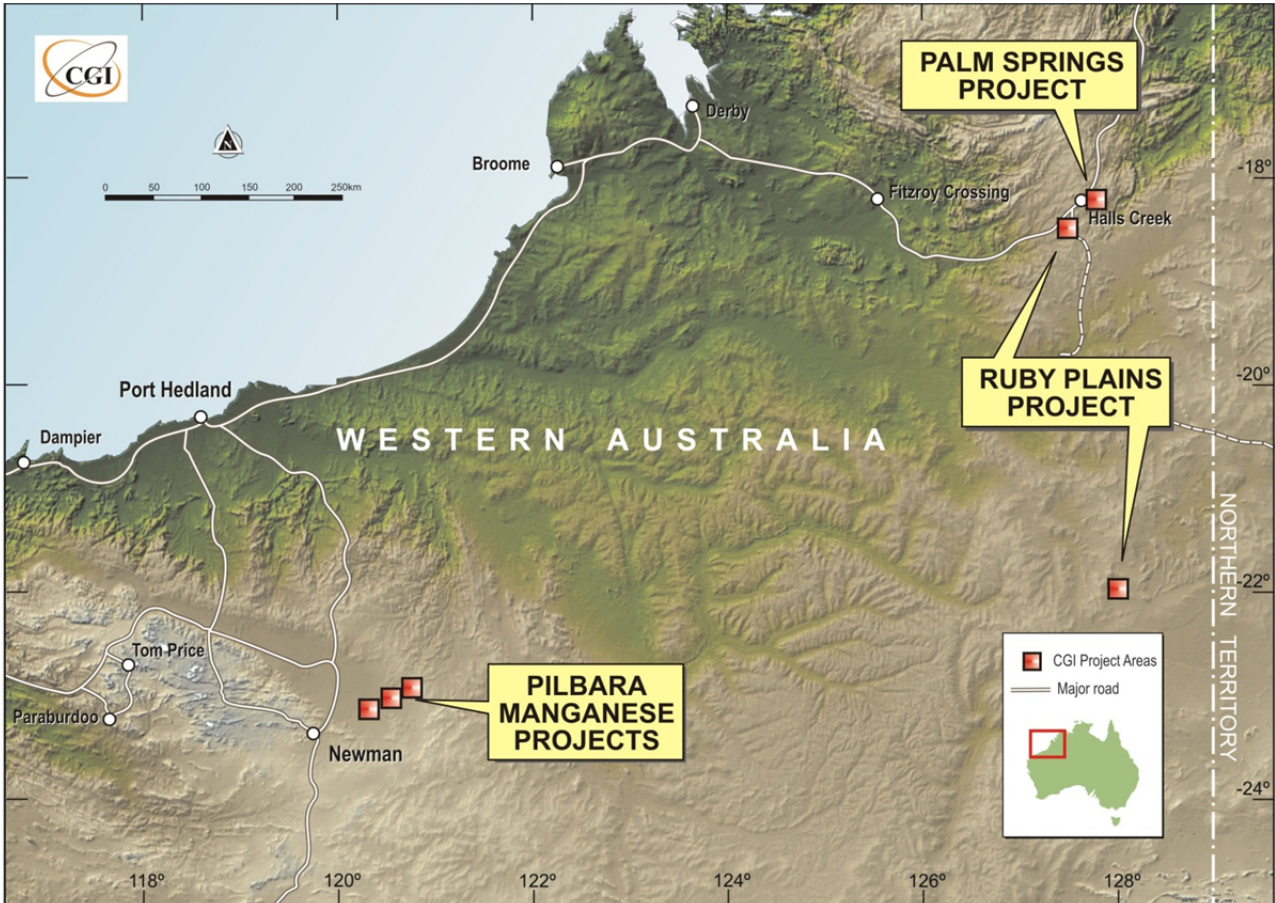


CONSOLIDATED GLOBAL INVESTMENT LIMITED

(ABN 97 009 212 293)

QUARTERLY REPORT FOR THE QUARTER ENDING 30 JUNE 2011 AMENDED

WESTERN AUSTRALIAN PROJECTS



EAST KIMBERLEY PROJECT

PALM SPRINGS/RUBY PLAINS

The Palm Springs Project comprises 5 granted prospecting licences (P80/1643-1647) and 1 granted exploration licence E80/4033. The project is centred around the Butchers Creek abandoned open pit gold deposit located some 35km south east of Halls Creek. The deposit was mined between 1995 and 1997 and by the time production was suspended in June 1997 PMA Gold Pty Ltd (PMA) had mined 761, 003 tonnes @ 2.09g/t Au (Dept. of Mines, Open File Company Report A54952- December 1997). Evaluation of open file reports continued during the quarter.

The Butchers Creek Open Pit is covered by 2 licences, P80/1645 (owned by Valley Point Pty Ltd-see Tenement Schedule, south-western end of pit) and M80/418 (owned by Kimberley Gold Pty Ltd, north-eastern end of pit).

Potential remains for additional mineralization to be present below the mined deposit and along strike.



Butchers Creek Open Pit

The Ruby Plains Project comprises 2 granted exploration licences, E80/3819 and E80/3921. The project is located some 20kms south west of the Palm Springs project and contains the Blue Hills historic gold deposits and the Ruby Plains historic tungsten deposits. The tenure lies within the Lamboo Complex along the Ruby Queen Shear which hosts gold within multiple quartz veins in Olympia Formation sediments. The Ruby Queen Mine, which has historical gold production of about 22,000 ounces (PMA Gold Ltd – 1994), is located some 10kms along strike to the north-east.

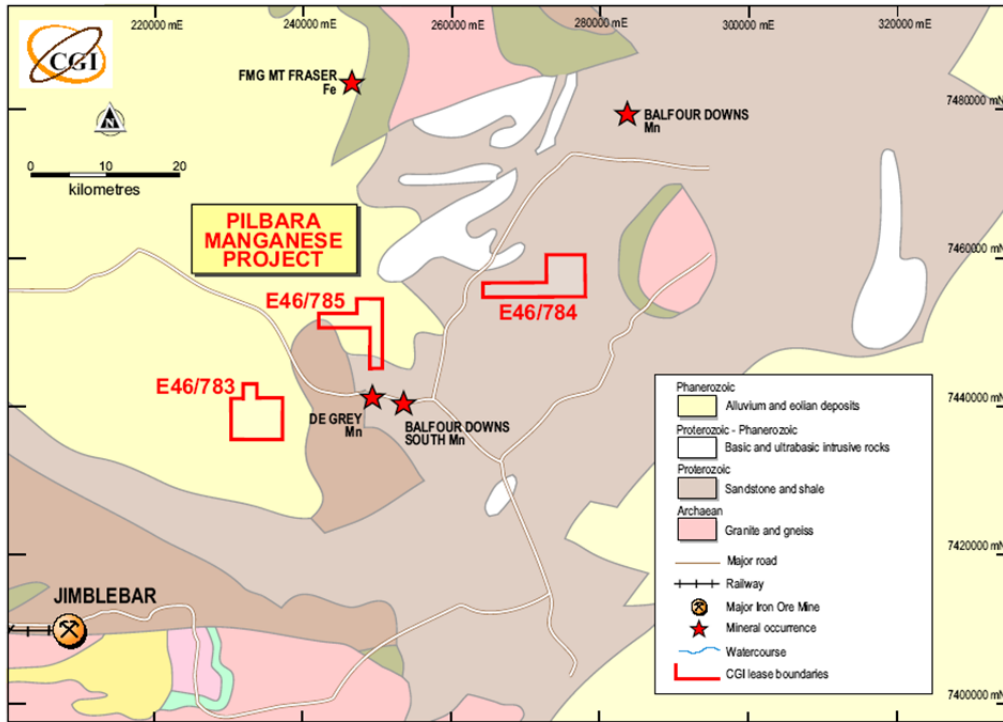
Compilation and assessment of historical data is continuing.

PILBARA PROJECT

The project comprises of 3 tenements, EL 46/783, EL 46/784 and EL 46/785 which are located some 100kms north-east of Newman and south of the Balfour Downs manganese discovery.

A study of historical exploration for manganese has revealed that little previous work has been conducted on the tenure. However in 1968 Sentinel Mining Company carried out exploration in the general area of Balfour Downs which resulted in rock chip samples being collected on the southern edge of E46/784 which returned three samples with manganese values of 21.6%, 25.7% and 11.4% Mn within manganese surface enrichment of Balfour Shales.

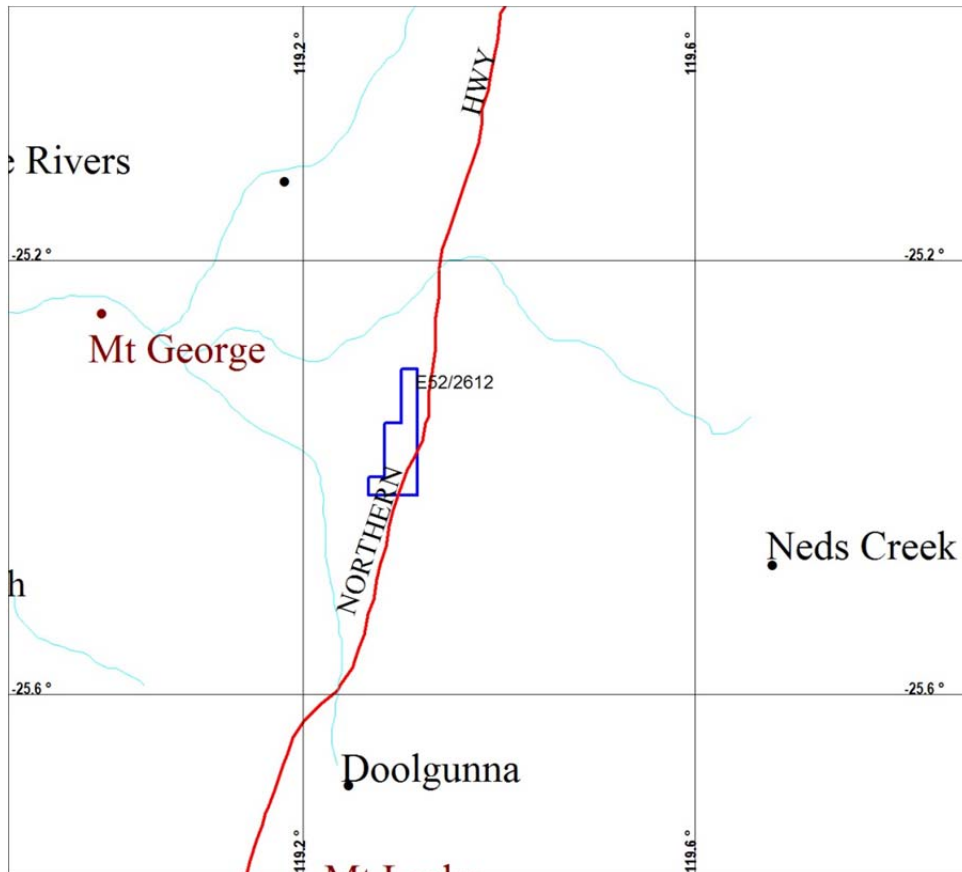
Field reconnaissance, mapping and surface sampling are planned during the current field season.



PILBARA MANGANESE PROJECTS, REGIONAL GEOLOGY

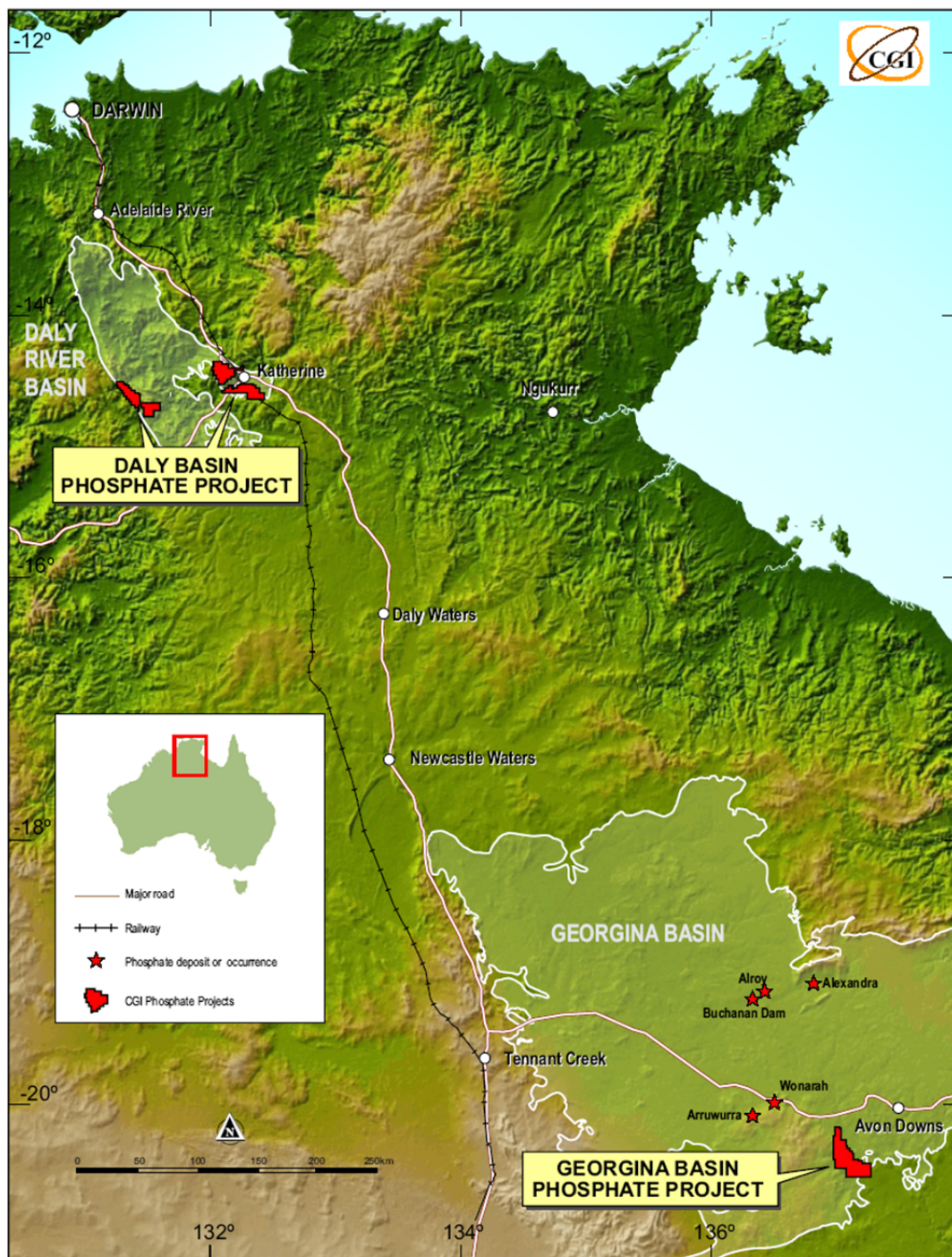
DOOLGUNNA PROJECT

The Company applied for one exploration licence; E52/2612 on 18 August 2010 which remains in application status. The tenement is located some 18kms south-west along strike of the Plutonic Gold Mine.



DOOLGUNNA PROJECT TENURE

NORTHERN TERRITORY PHOSPATE

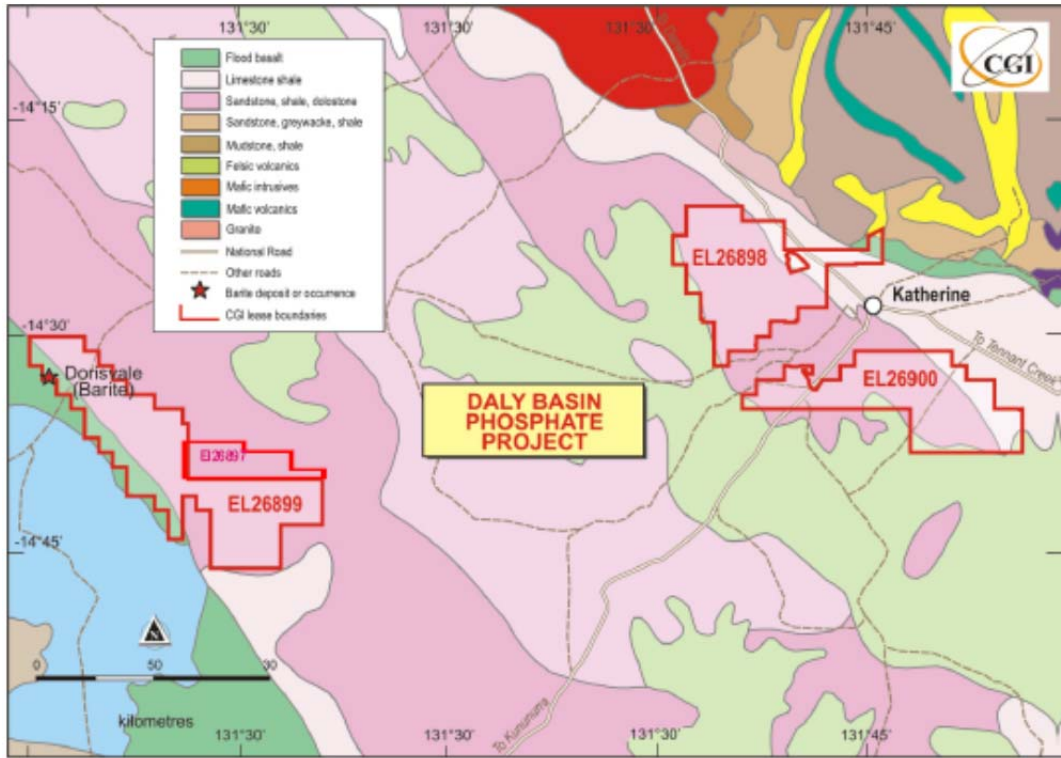


PHOSPHATE PROJECT LOCATIONS, NORTHERN TERRITORY

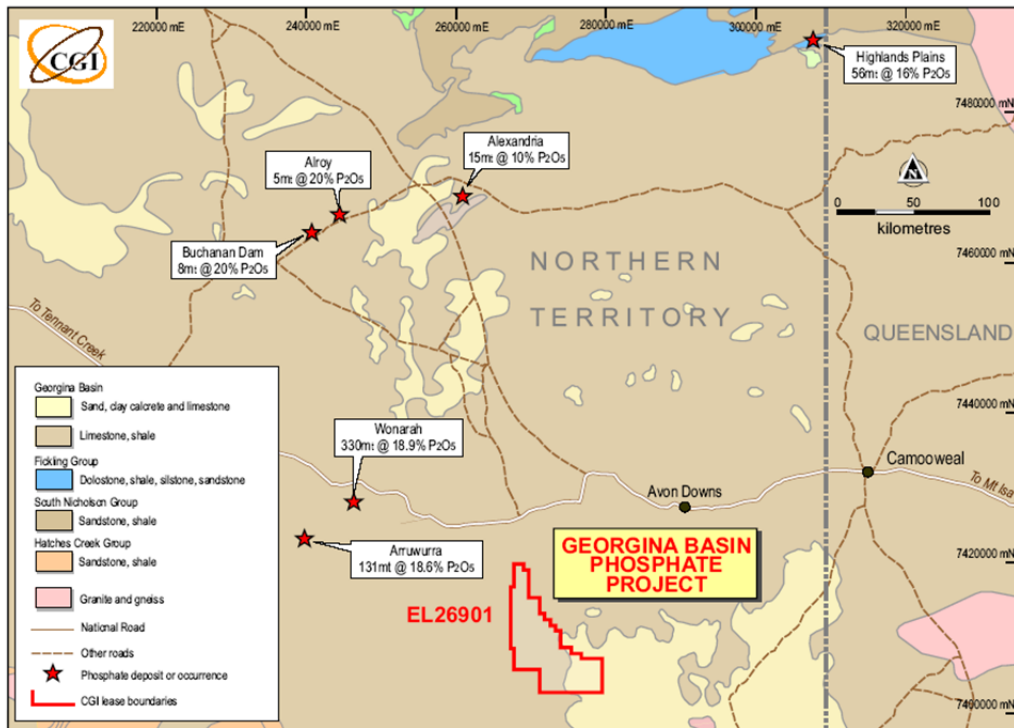
The Northern Territory Project comprises of five tenements acquired for their potential to host rock phosphate, four within the Daly Basin and one in the Georgina Basin for a total of some 1565km². Both basins contain shallow marine Cambrian sediments prospective for rock phosphate mineralisation.

Four of the tenements have been approved with one approval outstanding on EL26897 (Dorisvale). A country meeting with the traditional owners of the Northern Land Council has been completed and approval is awaited.

No modern day phosphate exploration has been conducted on any of the leases. Whilst no phosphate deposits have been located within the Daly basin, work carried out during the 1960's indicated that the shallow marine sediments are phosphatic.



DALY RIVER BASIN PHOSPHATE PROJECT, REGIONAL GEOLOGY



GEORGINA BASIN PHOSPHATE PROJECT, REGIONAL GEOLOGY

EL26901 lies within an extremely prospective Georgina Basin and lies south-south-east of the Alexandria-Alroy-Buchanan Phosphate deposits held by Phosphate Australia and 60kms south-east of the Wonarah-Arruwurra phosphate discoveries owned by Minemakers which contains a JORC & NI43-101 Compliant Inferred Resources at 1,258Mt @ 12% P₂O₅.

A review of open file data including topographic, gravity and geophysical data sets has been completed during the quarter. A topographic high has been identified in the central western part of EL26901 which is largely coincident with outcropping Camoweal Dolstone.

Gravity data sets from BMR surveys show a number of gravity highs which are coincident with the topographic high.

Various geophysical data sets acquired from NT Geological Survey defined a magnetic high which is also coincident with the topographic and gravity features described. The magnetic intensity suggests that the Middle Cambrian sediments are underlain by possible Antrim Plateau Volcanics which provided an interbasinal ridge for the possible deposition of phosphatic sediments.

The coincidence of gravity and topographic highs beneath Middle Cambrian shallow marine sediments provide an excellent target for phosphate mineralization.

ADDITIONAL ACQUISITION

Other potential projects and opportunities continue to be reviewed.

TENEMENT SUMMARY

PROJECT NAME	TENEMENT NUMBER	AREA BLOCK/HA	EQUITY	LOCATION
DALY BASIN	EL26897	27	CENTURY HILL PTY LTD 100%	240kms south of Darwin
	EL26898	80		
	ELA26899	117		
	EL26900	77		
GEORGINA BASIN	EL26901	198	CENTURY HILL PTY LTD 100%	330kms east of Tennant Creek
PALM SPRINGS	E80/4033	10	MOUNT RESOURCES PTY LTD 100%	20-50kms east of Halls Creek
	P80/1643	44	Valley Point Pty Ltd	
	P80/1644	34	Valley Point Pty Ltd	
	P80/1645	5.8	Valley Point Pty Ltd	
	P80/1646	120	Valley Point Pty Ltd	
	P80/1647	8	Valley Point Pty Ltd	
Ruby Plains	E80/3819	32	Mount Resources Pty Ltd	

PROJECT NAME	TENEMENT NUMBER	AREA BLOCK/HA	EQUITY	LOCATION
	E80/3921	70	Mount Resources Pty Ltd	
Doolgunna	ELA52/2612	12	MOUNT RESOURCES PTY LTD 100%	18kms south west of Plutonic
PILBARA	EL 46/783	13	MOUNT RESOURCES PTY LTD 100%	100kms north east of Newman
	EL 46/784	14		
	EL 46/785	10		
Wimba Hill	EL 80/2013	32	MOUNT RESOURCES PTY LTD 100%	40 km SW of Nannutarra Road House on North West Coastal Hwy

Competent Person's Statement

The information in this release relating to exploration is based on information compiled by Mr B. Townsend who is a member of the Australasian Institute of Mining and Metallurgy AusIMM). Mr B. Townsend is an Independent Geological Consultant to Consolidated Global Investments Limited and consents to the inclusion in this type of report of the information presented. Mr B. Townsend has sufficient experience relevant to the style of mineralisation and to the type of activity described to qualify as a competent person as defined in the 2004 Edition of the Australian Code for Reporting of Exploration Results, Mineral Resources and Ore Reserves.