

**ASX Announcement**

**4 July 2011**

**Mt Isa Metals Ltd – Further High Grade Drilling Results at Nabanga, Burkina Faso**

The Directors of D'Aguilar Gold Limited (ASX Code: DGR) are pleased to draw the attention of shareholders to this morning's announcement by Mt Isa Metals Ltd (ASX: MET) entitled "**High Grade Gold Drilling Results Continue from the Nabanga Gold Discovery.**"

Shareholders are encouraged to read the full MET announcement which is attached. The announcement can also be viewed in full on the ASX website under the Mt Isa Metals code of **MET**, or in the "Latest News" section of the Mt Isa Metals website: [www.mtisametals.com.au](http://www.mtisametals.com.au)

**D'Aguilar Gold Limited holds 52 million shares in Mt Isa Metals Limited.**



On behalf of the Board  
KM Schlobohm  
Company Secretary

**About D'Aguilar Gold**

D'Aguilar Gold Limited is focused on generating exploration and development companies in a wide array of minerals.

Projects are conceived directly through the skills and experience of D'Aguilar's accomplished team of exploration geoscientists (with an enviable track record), not by the costly purchase of properties. Each project or exploration strategy is held in a separate subsidiary.

Focused and specialist management is then engaged in the subsidiary, with project specific finance raised in the subsidiary – faster and less dilutive to D'Aguilar. As the subsidiary project develops and starts to derisk the subsidiary is separately capitalised (seed raisings followed by an IPO).

Investors can choose to invest specifically in a particular project/commodity, or by investing in D'Aguilar, invest in the resource company generating business which retains a significant carried interest in each project.

D'Aguilar projects tend to be very large, targeting new provinces with the potential to make world-class discoveries. The exploration concepts are often novel. While increased metal prices and advances in technology can turn former sub-economic deposits into viable projects, D'Aguilar subsidiary projects frequently emerge from detailed reassessment and reinterpretation of large databases – looking at things from a new angle and with a different focus using state of the art techniques. The D'Aguilar Directors and Managers have in the past applied new exploration models to extensive tenement areas which have led to identification of new mineral provinces and the discovery of nationally significant resources. Similar efforts are now being dedicated to D'Aguilar.



D'Aguilar currently holds 52 million shares (33%) in **Mt Isa Metals Limited** (ASX: MET) currently exploring for gold in Burkina Faso, 35.2 million shares (12.4%) in **Solomon Gold plc** (LSE: SOLG) currently exploring for gold and copper in the Solomons and Queensland, 58.85 million shares (53%) in **AusNiCo Limited** (ASX: ANW) exploring for nickel sulphides, cobalt, gold and silver in south east Queensland, and 27 million shares (29%) in **Navaho Gold Limited** (ASX: NVG) exploring for Carlin style gold in Nevada (USA) and Queensland.

D'Aguilar is also progressing the corporate development of **Archer Resources Limited** which is focussing on the discovery and development of previously overlooked copper-molybdenum-gold porphyry systems in Queensland. Having appointed Dr Matt White as CEO, and finalised its \$2 million seed raising, Archer Resources is also preparing for an IPO and ASX listing later in 2011.

D'Aguilar is also progressing the corporate and project development of **Armour Energy Limited** which has just completed a \$14 million seed raising. Armour Energy is dedicated to the discovery and development of world class gas resources in an extensive new province in Northern Australia. The area currently under application covers 118,814km<sup>2</sup> of the McArthur, South Nicholson and Georgina Basins. An IPO is planned for 2011.

D'Aguilar Gold currently has 324,202,760 shares on issue.

Email: [info@daguilargold.com.au](mailto:info@daguilargold.com.au)

Electronic copies and more information are available on the Company website: [www.daguilargold.com.au](http://www.daguilargold.com.au)

**For further information contact:**

**Mr Nicholas Mather**  
Managing Director D'Aguilar Gold Ltd  
Ph: 07 3303 0680

**Karl Schlobohm**  
Company Secretary, D'Aguilar Gold Ltd  
Ph: 07 3303 0680

---

Phone	+61 7 3303 0680	Head office	Postal Address	Exploration Office
Fax	+61 7 3303 0681	Level 5	GPO Box 5261	52 Violet Street
Email	<a href="mailto:info@daguilargold.com.au">info@daguilargold.com.au</a>	60 Edward Street	Brisbane QLD 4001	PO Box 611, Gympie QLD 4570
Website	<a href="http://www.daguilargold.com.au">www.daguilargold.com.au</a>	Brisbane QLD 4000		Phone +61 7 5483 6199
				Fax +61 7 5483 6233

## ASX Announcement

04 July 2011

### **HIGH GRADE GOLD DRILLING RESULTS CONTINUE FROM THE NABANGA GOLD DISCOVERY**

#### **Highlights:**

- **Additional high grade gold assay results received from reverse circulation drilling at the Nabanga gold discovery in south-east Burkina Faso.**
- **Significant new intersections include:**
  - **3m @ 5.63g/t Au** from 19m (in NARC032)
  - **4m @ 7.45g/t Au** from 66m (in NARC033)  
**(incl. 2m @ 14.08g/t Au** from 67m)
  - **5m @ 5.44g/t Au** from 24m (in NARC034)  
**(incl. 2m @ 11.38g/t Au** from 24m)
  - **4m @ 8.52g/t Au** from 74m (in NARC035)  
**(incl. 2m @ 16.05g/t Au** from 74m)
- **High grade gold mineralisation now recorded to 65 metres vertical depth on the central quartz lode on contiguous sections (2m @ 14.08g/t Au in NARC033 and 2m @ 16.05g/t Au in NARC035).**
- **Deeper drilling planned for assessment of open-ended high grade gold zones to 125 metres vertical depth.**
- **RC drilling continuing along the full 3.6 kilometre strike length of the Nabanga structure.**
- **Assay results awaited from multiple project areas including - Nabanga (RC drilling), Bantou (RC drilling), Kamsongo (RAB drilling) and Boungou (soil sampling).**

The Board of Mt Isa Metals Limited (MET) is pleased to announce that assay results have been received for the first six drill holes of the phase two reverse circulation (RC) drilling program at the Nabanga gold discovery in south-east Burkina Faso (figure 1).

The drill assay results include multiple high grade gold intersections on the central quartz lode and open-ended high grade gold intersections at 65 metres vertical depth.

The new drill results extend the depth of known gold mineralisation on the Nabanga structure and provide significant potential to further extend gold mineralisation by additional drilling at depth.

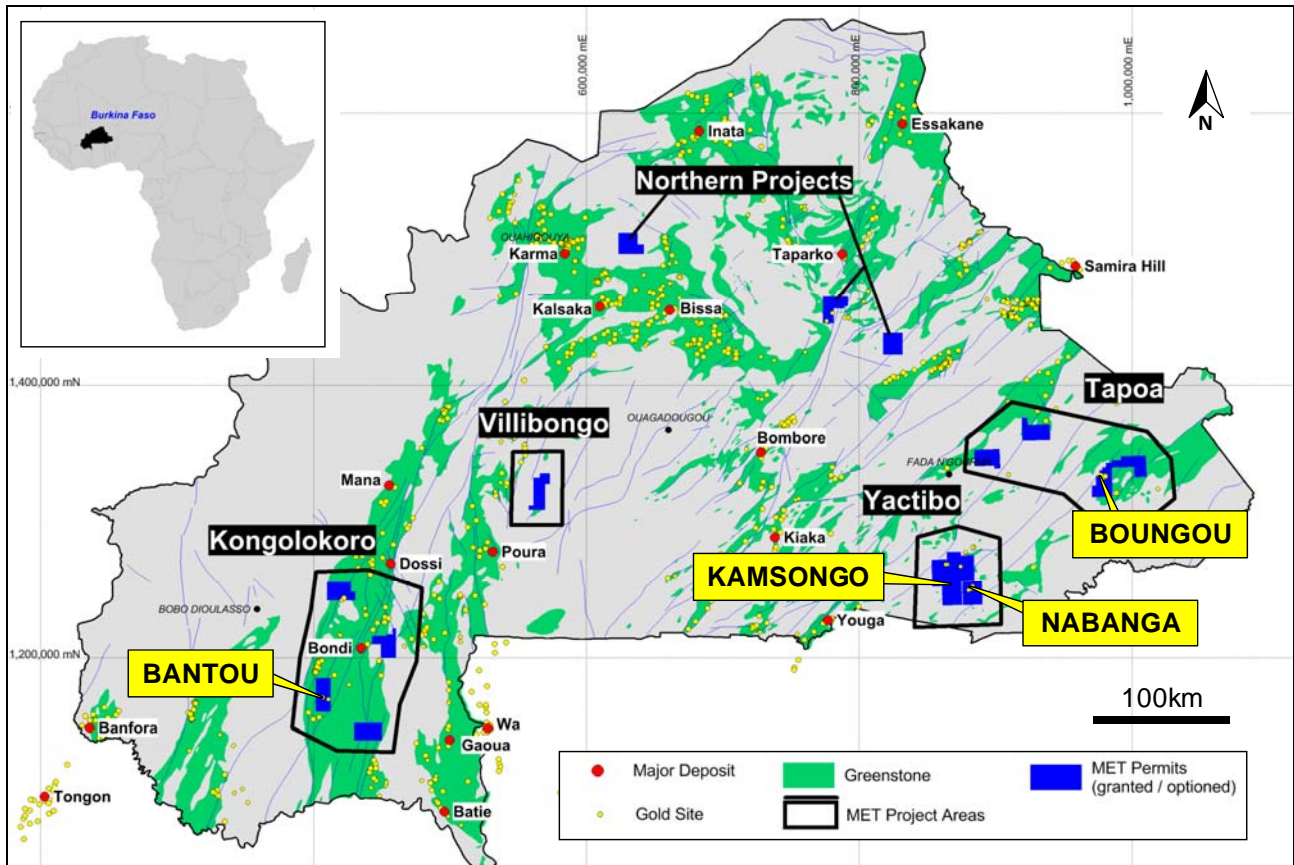


Figure 1 – Location diagram.

### Nabanga - Phase 2 Drilling Results

The Nabanga gold discovery was announced by MET in early 2011 following the completion of an initial broad-spaced reverse circulation (RC) drilling program that defined significant gold mineralisation on the Nabanga structure over a 3.6 kilometre strike length and to an approximate maximum 50 metre vertical depth.

Phase two RC drilling was commenced at Nabanga in June 2011 and is designed to test the entire strike length of the Nabanga structure on 200 metre-spaced cross sections to an approximate 65 metre vertical depth (figure 2).

The initial phase two drilling program is designed to identify high grade “shoots” within the Nabanga structure. The high grade zones will subsequently be drill tested at depth and subject to additional infill drilling as is required to allow for an initial resource estimation.

Assay results have now been received for the first six drill holes of the phase two drilling program. The new drilling results include further significant intersections (including high grade intervals within the central quartz lode) as follows:

- **3m @ 5.63g/t Au** from 19m (in NARC032)
- **4m @ 7.45g/t Au** from 66m (in NARC033)  
(incl. 2m @ 14.08g/t Au from 67m)
- **5m @ 5.44g/t Au** from 24m (in NARC034)  
(incl. 2m @ 11.38g/t Au from 24m)
- **4m @ 8.52g/t Au** from 74m (in NARC035)  
(incl. 2m @ 16.05g/t Au from 74m)

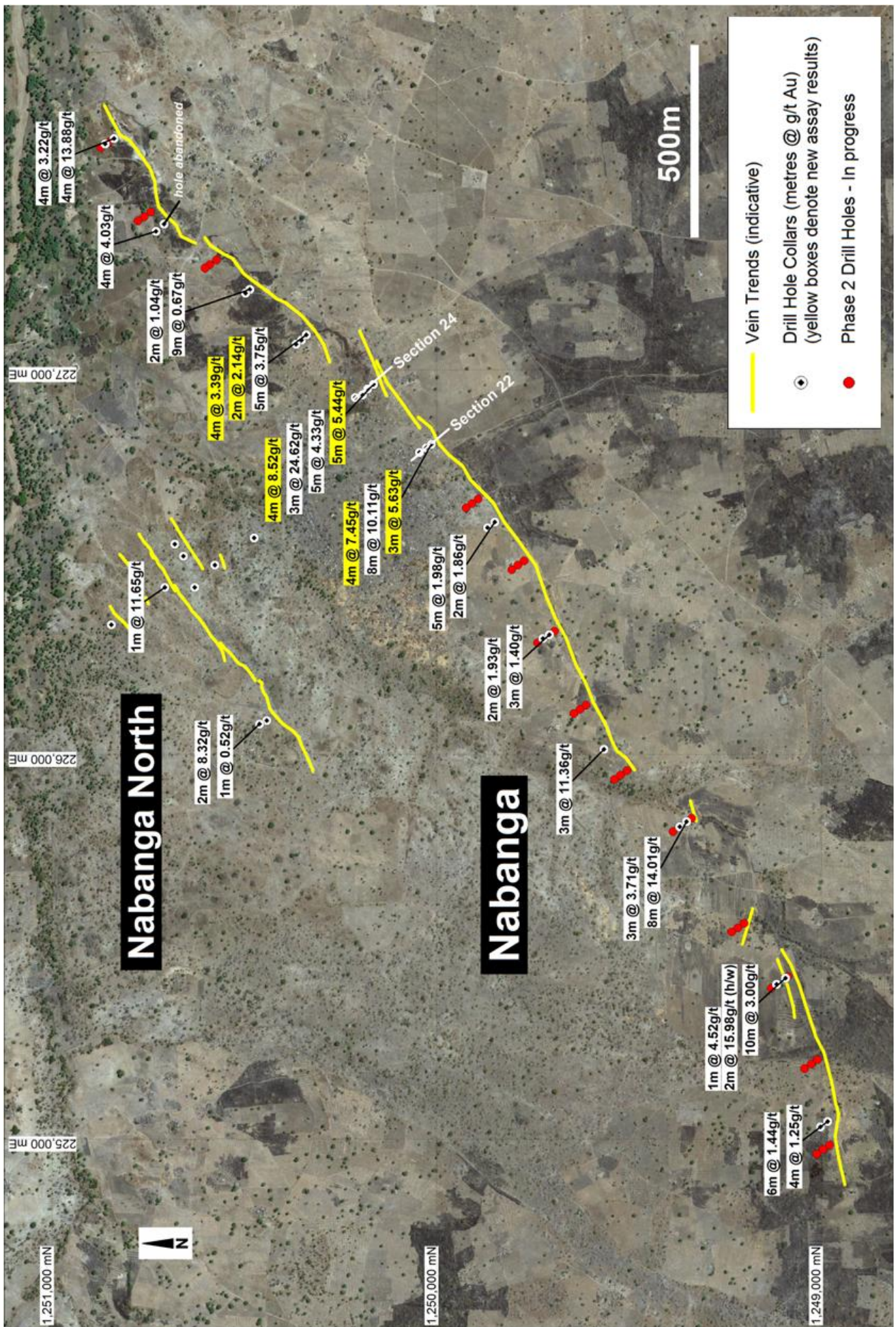


Figure 2 - Location diagram – Nabanga drilling results (new results in yellow boxes).

The high grade intersections recorded in drill hole NARC033 (**2m @ 14.08g/t Au**) and NARC035 (**2m @ 16.05g/t Au**) are particularly significant in that they demonstrate continuity of the central high grade quartz lode on contiguous 200 metre-spaced cross sections to a minimum 65 metres vertical depth (refer figures 3 and 4).

Summary intersection data for each of the cross sections which include drill holes NARC033 and NARC035 (which are 200m apart) are summarised in table 1 as follows:

Cross Section	Drill Intersections
<b>22</b>	NARC032 3.00m @ 5.63g/t Au
	NARC030 8.00m @ 10.11g/t Au
	<u>NARC033 4.00m @ 7.45g/t Au</u>
	<b>Average 5.00m @ 8.50g/t Au</b>
	↓ Increasing depth
<b>24</b>	NARC034 5.00m @ 5.44g/t Au
	NARC012 5.00m @ 4.33g/t Au
	NARC011 3.00m @ 24.62g/t Au
	<u>NARC035 4.00m @ 8.52g/t Au</u>
	<b>Average 4.25m @ 9.22g/t Au</b>
	↓ Increasing depth

**Table 1 – Nabanga Drill Intersection Data (Cross Sections 22 and 24).**

The intersections in drill holes NARC033 and NARC035 are open at depth (down-dip) and therefore also provide an immediate opportunity to further extend the depth of known gold mineralisation at Nabanga through deeper drilling.

Additional RC drill holes have been planned to test the Nabanga structure down-dip from drill holes NARC033 and NARC035 (initially to 125 metres vertical depth). This drilling will commence shortly.

In addition to the deeper drilling highlighted above, the balance of the Nabanga shallow infill drilling (to 200m spaced cross sections) is continuing.

MET considers the results of the drilling completed to date at Nabanga to be extremely encouraging and indicates potential to define a significant gold deposit.

Greenstone-hosted gold systems such as those in Burkina Faso and other major gold provinces such as Eastern Canada and Western Australia are often noted for a significant depth extent to gold mineralisation.

Additional Nabanga drill samples have been dispatched to the laboratory in Ouagadougou for analysis. Assay results will be reported progressively throughout the ongoing Nabanga drilling program.

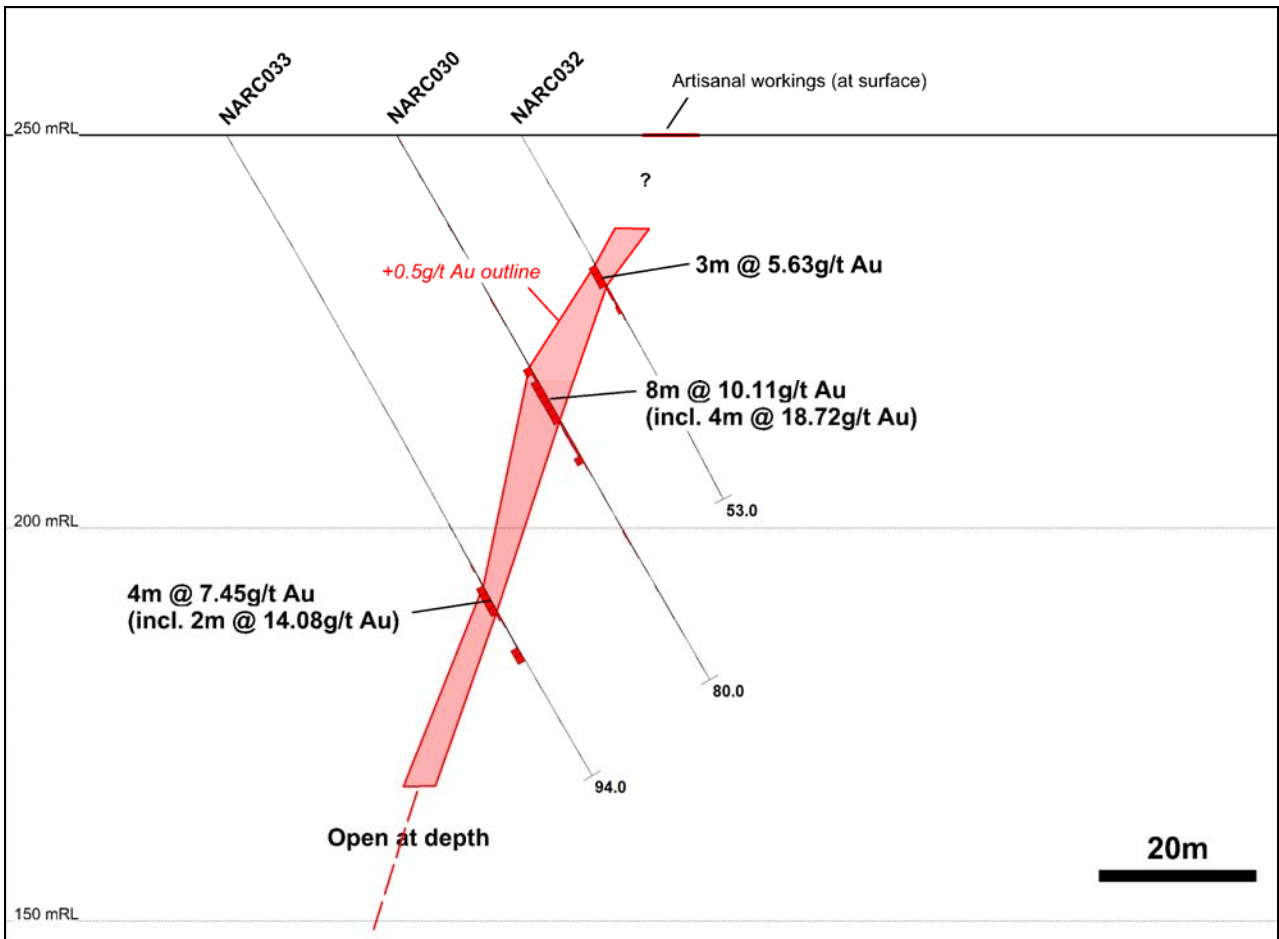


Figure 3 – Nabanga Cross Section (Section 22 - looking north-east).

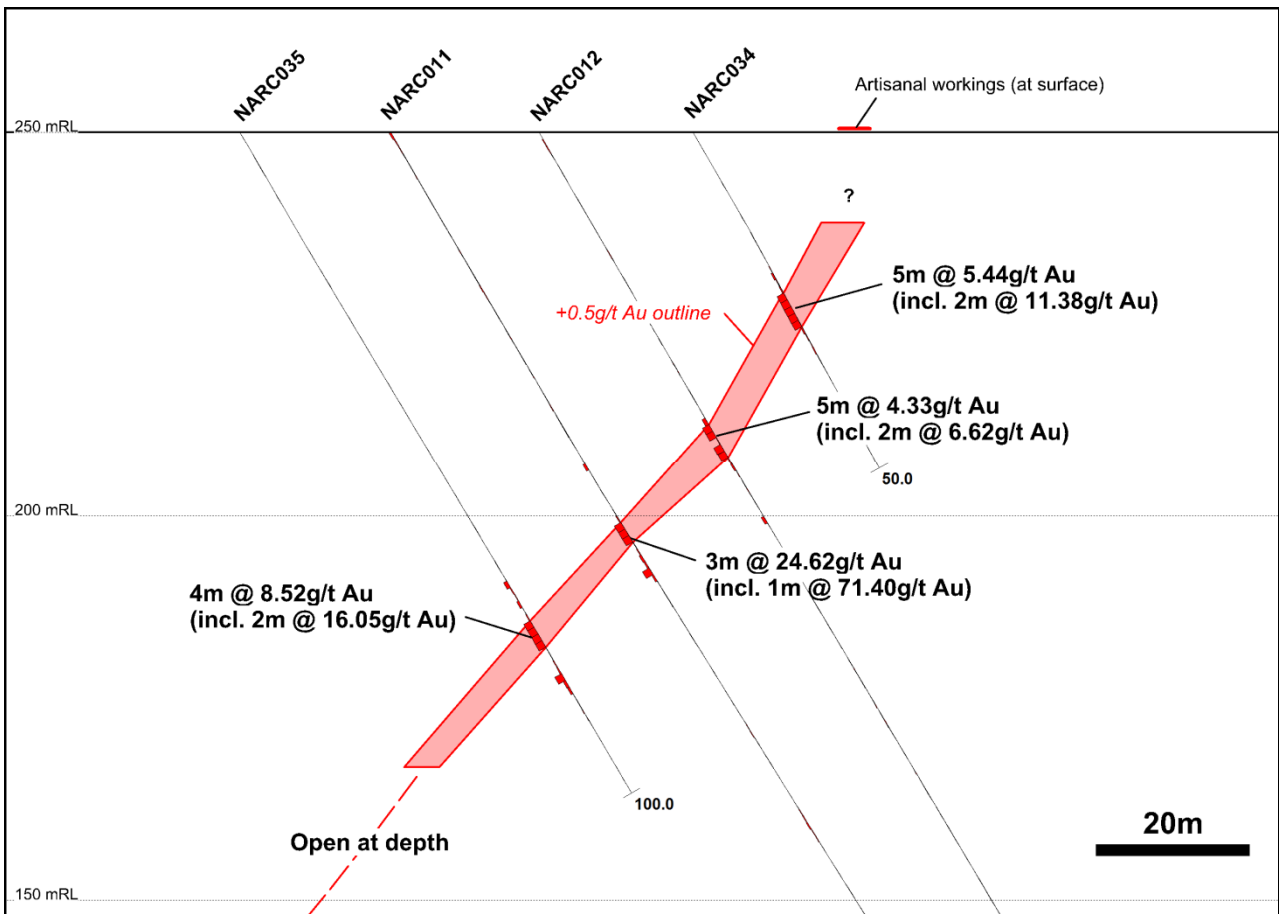


Figure 4 – Nabanga Cross Section (Section 24 - looking north-east).

## Additional Prospect Areas

The Company is committed to maintaining an aggressive exploration program across the Company's large and highly prospective project portfolio in Burkina Faso.

Further to the Nabanga drilling activities the Company has submitted in excess of 5,000 samples to the laboratory from additional prospect areas that are currently awaiting assay results. These samples include:

- **Bantou Prospect** – phase two RC drilling to follow up high grade gold intersections along a 500 metre strike length of gold workings (Kongolokoro Project - south-west Burkina Faso)
- **Kamsongo Prospect** – RAB drilling of +20ppb gold-in-soil geochemical anomalies (Yactibo Project area - south-east Burkina Faso)
- **Boungou Prospect** – phase one soil sampling to extend recently discovered high order (+50ppb) gold-in-soil anomalies (Tapoa Project area – south-east Burkina Faso)

Assay results for the various prospect areas will be reported as they come to hand.

Hole No.	East (WGS84)	North (WGS84)	TD (m)	Dip	Azi		From (m)	To (m)	Width (m)	Au (g/t)
NARC032	226,806	1,250,014	53	-60	142		19	22	3	5.63
NARC033	226,785	1,250,045	94	-60	142		66	70	4	7.45
						incl.	67	69	2	14.08
							75	77	2	1.03
NARC034	226,962	1,250,164	50	-60	142		24	29	5	5.44
						incl.	24	26	2	11.38
NARC035	226,928	1,250,212	100	-60	142		74	78	4	8.52
						incl.	74	76	2	16.05
NARC036	227,077	1,250,352	70	-60	142		48	49	1	0.53
							51	53	2	2.14
NARC037	227,066	1,250,366	95	-60	142		55	56	1	0.70
							59	61	2	0.75
							64	68	4	3.39
						incl.	65	68	3	4.31
							70	71	1	0.50

**Table 2 – Nabanga Drill Results (0.5g/t Au cut-off grade).**

For further information please contact:

**Mr Peter Spiers**  
Managing Director  
Ph: (07) 3303 0624 or 0409 407 265

**Mr Peter Harding-Smith**  
Company Secretary  
Ph: (07) 3303 0624 or 0488 771 588

Email: [info@mtisametals.com.au](mailto:info@mtisametals.com.au)

Further information on Mt Isa Metals can be found on our website [www.mtisametals.com.au](http://www.mtisametals.com.au)

### Competent Persons Statement

The information in this report that relates to Exploration Results is based on information compiled by Mr Peter Spiers B.Sc (Hons) Geol., who is a Member of The Australasian Institute of Mining and Metallurgy. Mr Spiers is a full time employee of the company. Mr Spiers has sufficient experience which is relevant to the style of mineralisation and type of deposit under consideration and to the activity which he is undertaking to qualify as a Competent Person as defined in the 2004 Edition of the 'Australasian Code for Reporting of Exploration Results, Mineral Resources and Ore Reserves'. Mr Spiers consents to the inclusion in the report of the matters based on his information in the form and context in which it appears.