



DRAGON MINING LIMITED

An Established Nordic Gold Producer with an Exciting Future

RIU Melbourne Resources Round-up

29 September 2011



Disclaimer

The purpose of this presentation is to provide general information about Dragon Mining Limited (the "**Company**"). Unless otherwise stated herein, the information in this presentation is based on the Company's own information and estimates.

This presentation does not constitute or form any part of any offer or invitation to sell or issue, or any solicitation of any offer to purchase or subscribe for, any securities in the Company nor shall it or any part of it, or the fact of its distribution, form the basis of, or be relied on in connection with, any contract or commitment or investment decision relating to any securities in the Company. Any decision regarding any proposed subscription for securities in the Company must be made solely on the basis of information on the Company that is publicly available.

Certain statements in the presentation are or may be "forward-looking statements" and represent the Company's intentions, projections, expectations or beliefs concerning, among other things, future operating results and various components thereof or the Company's future economic performance. These forward looking statements speak, and the presentation generally speaks, only at the date hereof. The projections, estimates and beliefs contained in such forward looking statements necessarily involve known and unknown risks and uncertainties which may cause the Company's actual performance and financial results in future periods to differ materially from any express or implied estimates or projections.

No representation or warranty, express or implied, is made by the Company that the material contained in this presentation will be achieved or prove to be correct. Except for statutory liability which cannot be excluded, each of the Company, its officers, employees and advisers expressly disclaims any responsibility for the accuracy, fairness, sufficiency or completeness of the material contained in this presentation, or any opinions or beliefs contained in this document, and excludes all liability whatsoever (including in negligence) for any loss or damage which may be suffered by any person as a consequence of any information in this presentation or any error or omission there from. The Company is under no obligation to update or keep current the information contained in this presentation or to correct any inaccuracy or omission which may become apparent, or to furnish any person with any further information. Any opinions expressed in the presentation are subject to change without notice.

All persons should seek appropriate professional advice in reviewing or considering the presentation and all other information with respect to the Company and evaluating the business, financial performance and operations of the Company. The presentation does not purport to contain all of the information that may be required to evaluate all of the factors that would be relevant in determining whether to deal in the Company's securities, including but not limited to any person's objectives, financial situation or needs. Each person should make, and will be taken to have made, its own investigation, assessment and analysis of the information in this presentation and other matters that may be relevant to it considering whether to deal in the Company's securities.

This presentation is not for distribution in, nor does it constitute an offer of securities for sale in, Canada, Japan, or in any jurisdiction where such distribution or offer is unlawful. Neither this presentation nor a copy of the presentation can be taken or transmitted into the United States of America, its territories or possessions, or distributed, directly or indirectly, in the United States of America, its territories or possessions or to any US person as defined in Regulation S under the US Securities Act 1933, as amended (the "**Securities Act**"). Any failure to comply with this restriction may constitute a violation of United States securities laws. The presentation and any oral statements made in connection with it are not an offer of securities for sale in the United States. The Company's shares have not and will not be registered under the Securities Act and may not be offered or sold in the United States or to or for the account or benefit of US persons (as such terms are defined in Regulation S under the Securities Act) except pursuant to an exemption from such registration. The distribution of the presentation in other jurisdictions may be restricted by law and persons into whose possession this document comes should inform themselves about and observe any such restrictions.



Notations

The information in this presentation that relates to exploration targets refers to targets that are conceptual in nature, where there has been insufficient exploration to define a Mineral Resource and it is uncertain if further exploration will result in the determination of a Mineral Resource.

The information on exploration targets in this presentation are based on a conceptual range of targets as follows:

(1) Kuusamo North Gold Camp

Tonnage range: 4,050,000 tonnes to 5,900,000 tonnes
Grade range: 5.5 g/t gold to 6.5 g/t gold
Ounces: 750,000 ounces to 1,100,000 ounces

(2) Juomasuo Deposit

Tonnage range: 3,300,000 tonnes to 4,400,000 tonnes
Grade range: 5.5 g/t gold to 6.0 g/t gold
Ounces: 600,000 ounces to 800,000 ounces

(3) Hangaslampi Deposit

Tonnage range: 750,000 tonnes to 1,500,000 tonnes
Grade range: 6.0 g/t gold to 6.5 g/t gold
Ounces: 150,000 ounces to 300,000 ounces

The information in this presentation that relates to Exploration Results, Mineral Resources or Ore Reserves is based on information compiled by Mr Neale Edwards BSc (Hons), a Fellow of the Australian Institute of Geoscientists. Any statement herein, direct or implied, as to a potential gold deposit is conceptual in nature and a reference to the targeted gold potential and not to any JORC compliant Mineral Resource. Mr Edwards is a full time employee of Dragon Mining Limited and has sufficient experience which is relevant to the style of mineralization and type of deposit under consideration and to the activity which he is undertaking to qualify as Competent Person as defined in the 2004 Edition of the Australasian Code of Reporting for Exploration Results, Mineral Resources and Ore Reserves. Mr Neale Edwards consents to the inclusion in this presentation of the matters based on his information in the form and context in which it appears.



Established Nordic Gold Producer

Svartliden Gold Mine

- 35,000 ounces

Vammala Production Centre

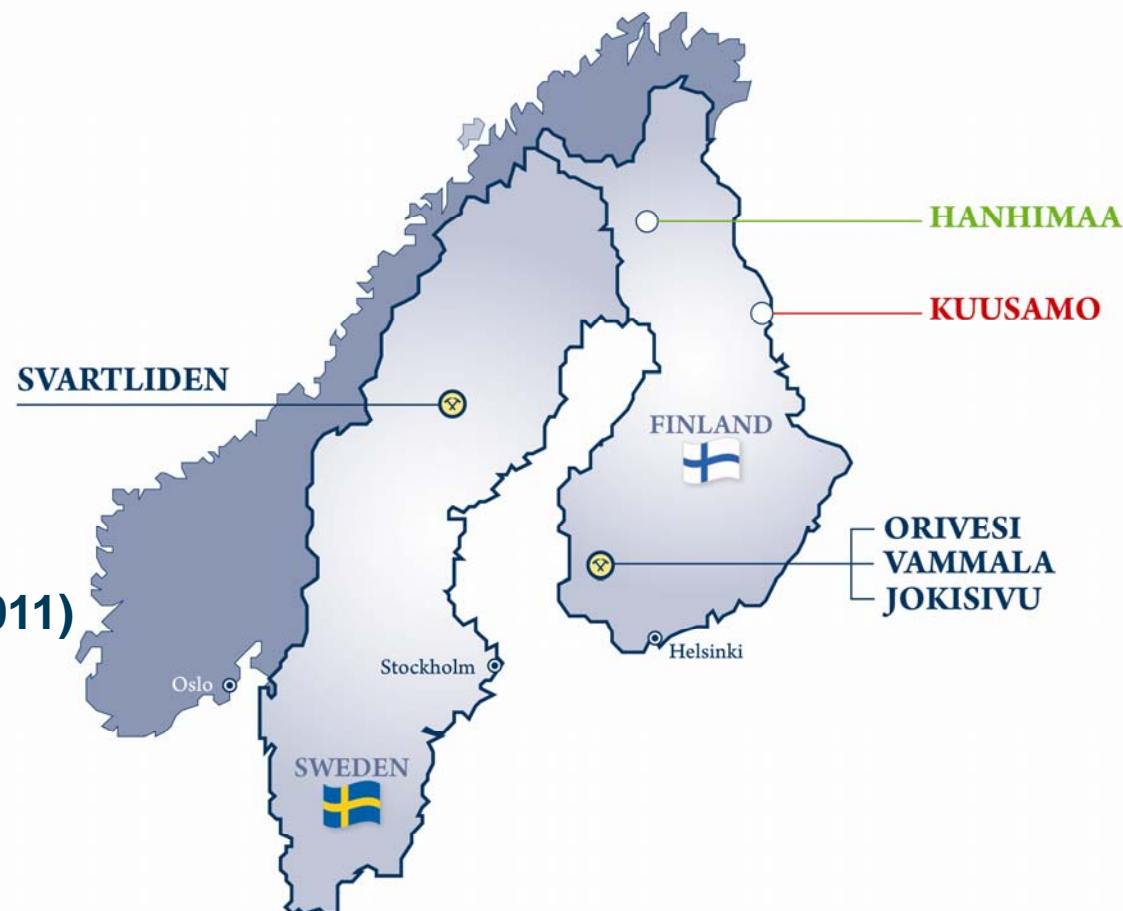
- 30,000 ounces

Game Changer

- Kuusamo Gold Project

Strong Financial Position (30 June 2011)

- \$25.3m of liquid assets
- 2.3m Chalice shares (CHN)



Production, Cashflow, Growth



Corporate Overview

Issued Capital

Ordinary Shares	75.2m
Options (\$1.40 – \$2.10)	2.6m
Market Capitalisation	A\$95m

Board of Directors

Peter Cordin	Executive Chairman
Michael Naylor	Finance Director
Peter Gunzburg	Non Executive Director
Christian Russenberger	Non Executive Director
Tapani Järvinen	Non Executive Director
Markku Mäkelä	Non Executive Director

Share Price Performance



Substantial Shareholders

Eurogold	19.9%
Nicolas Mathys	15.5%
Floreat/Phoenix Gold Fund	5.3%

Australian Securities Exchange Code: DRA



Outstanding Highlights

- ✓ Two established and profitable production centres
- ✓ 1.1 million ounces of Resources
- ✓ Outstanding game changing exploration project
- ✓ Strong cash balance to aggressively grow assets
- ✓ Moving to 150,000 ounce gold producer
- ✓ **Production, Cashflow, Growth – Exciting Future**



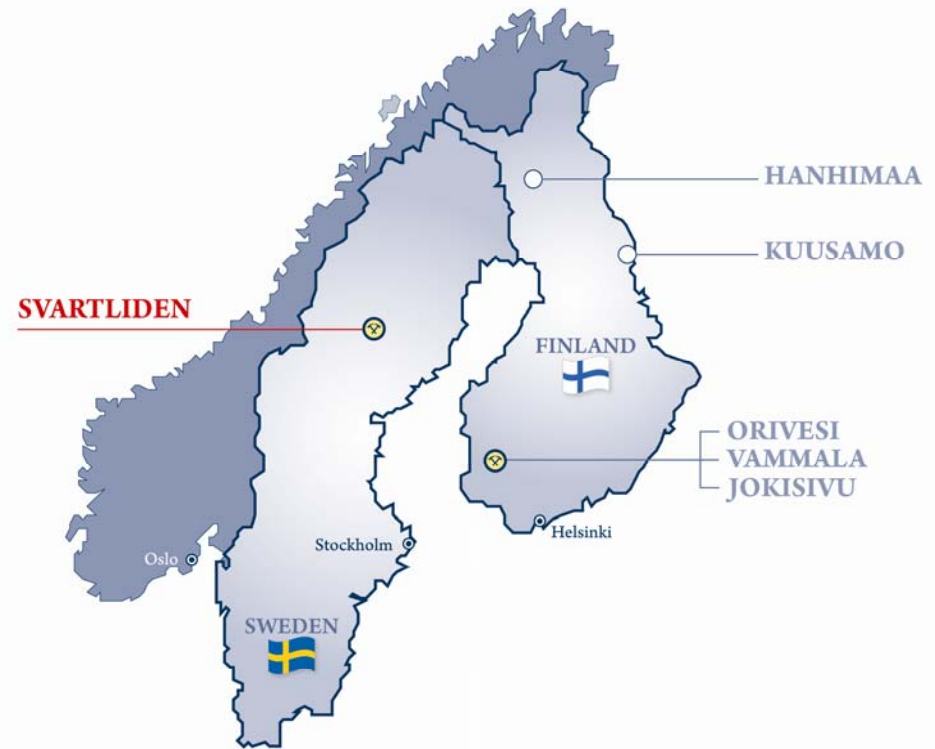
Scandinavia

- ✓ Low sovereign risk
- ✓ Long history of mining
- ✓ World class geological region
- ✓ No mining royalties
- ✓ Low corporate tax rate Sweden - 26.3% Finland - 26.0%
- ✓ Major mining, smelting and mining equipment industry



Svartliden Gold Mine

Location





Svartliden Gold Mine

Statistics to 30 June 2011



	YTD Jun 2011	To Date
Ore Processed	168,266 t	1,992,131 t
Average Head Grade	2.5 g/t	4.5 g/t
Average Recovery	87.3 %	90.4 %
Gold Produced	11,578 oz	262,614 oz

- **Produce 30,000 ounces in 2011**
- **Average cash cost US\$850/oz**





Svartliden Gold Mine

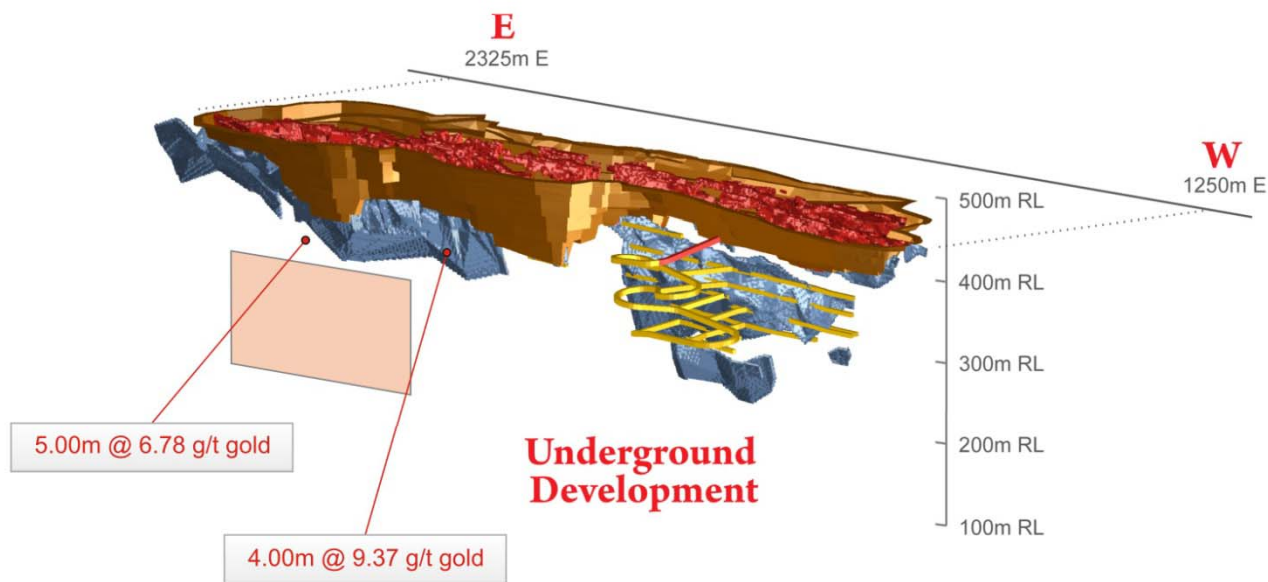
Open Pit and Underground



SVARTLIDEN GOLD MINE
 2005 - June 2011
 1.99mt @ 4.53 g/t gold
 (262,614 ounces)

SVARTLIDEN OPEN PIT
 Resource (Inclusive of Reserves)
 Measured - 186,700t @ 3.8 g/t gold
 Indicated - 379,200t @ 3.2 g/t gold
 Inferred - 30,300t @ 2.6 g/t gold
 Total - 596,200t @ 3.4 g/t gold
 (64,800 ounces)

SVARTLIDEN UNDERGROUND
 Resource (Inclusive of Reserves)
 Measured - 8,000t @ 4.9 g/t gold
 Indicated - 396,500t @ 5.6 g/t gold
 Inferred - 32,400t @ 4.6 g/t gold
 Total - 436,900t @ 5.5 g/t gold
 (77,400 ounces)



Eastern Zone Depth Extensions
 300m RL to 150m RL

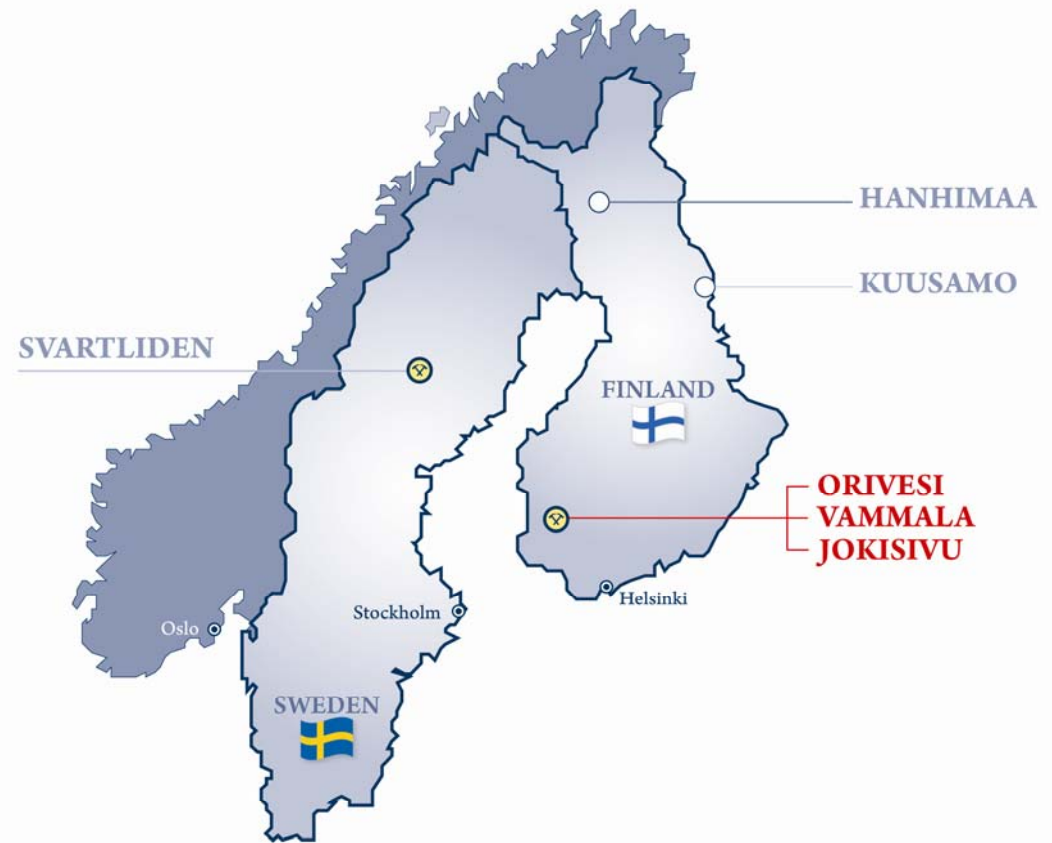
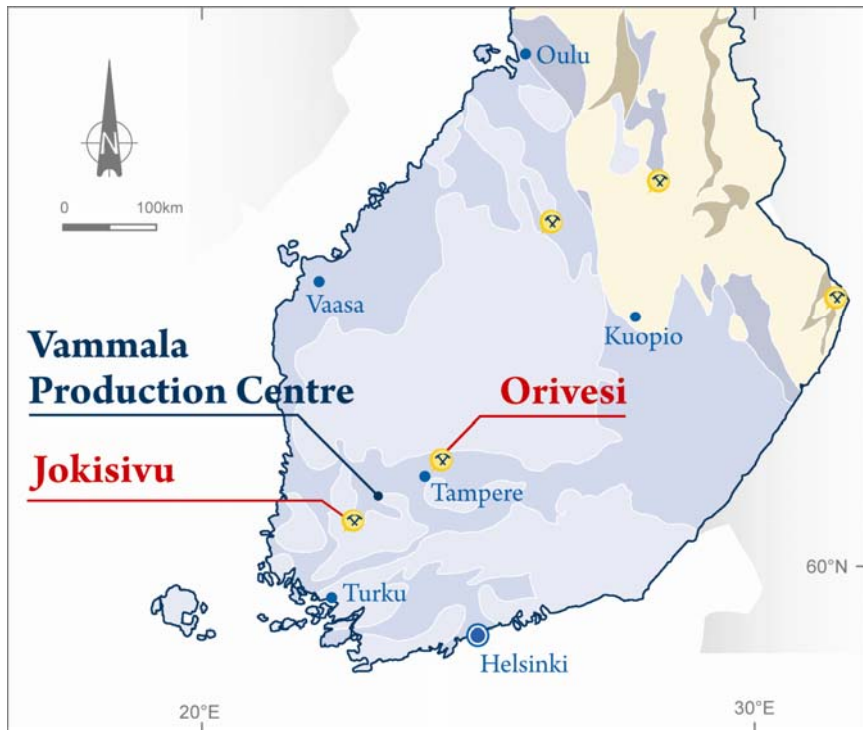
LEGEND

- Development Completed
- Planned Development



Southern Finland

Location





Vammala Production Centre

Statistics to 30 June 2011

	YTD Jun 2011	To Date
Ore Processed	103,441 t	780,737 t
Average Head Grade	4.6 g/t	5.5 g/t
Average Recovery	83.4 %	83.5 %
Gold Produced	12,752 oz	115,684 oz

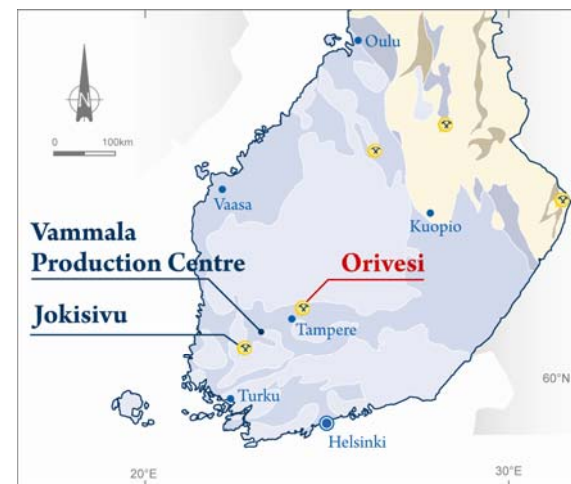
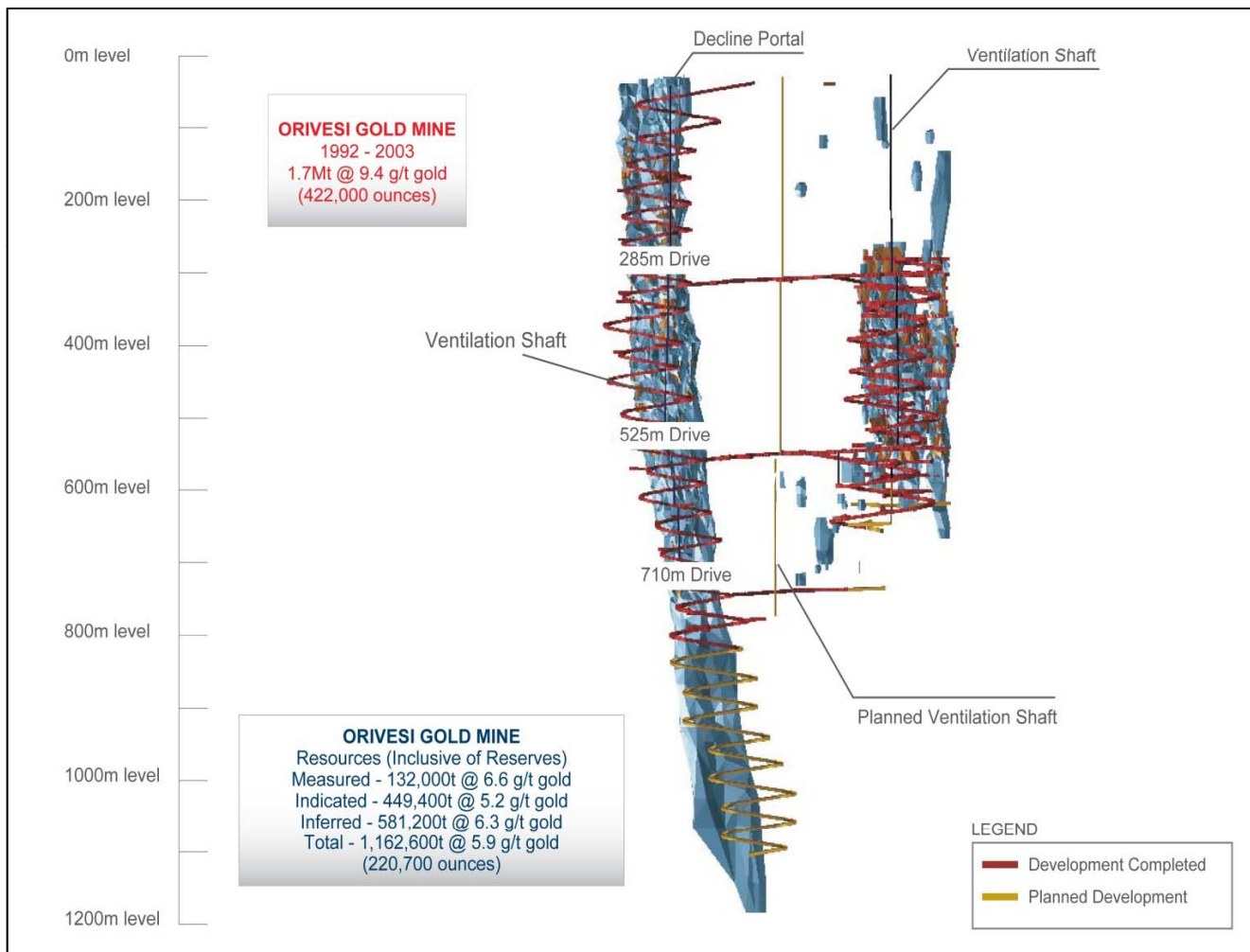
- **Produce 28,000 ounces in 2011**
- **Average cash cost US\$875/oz**





Orivesi Gold Mine

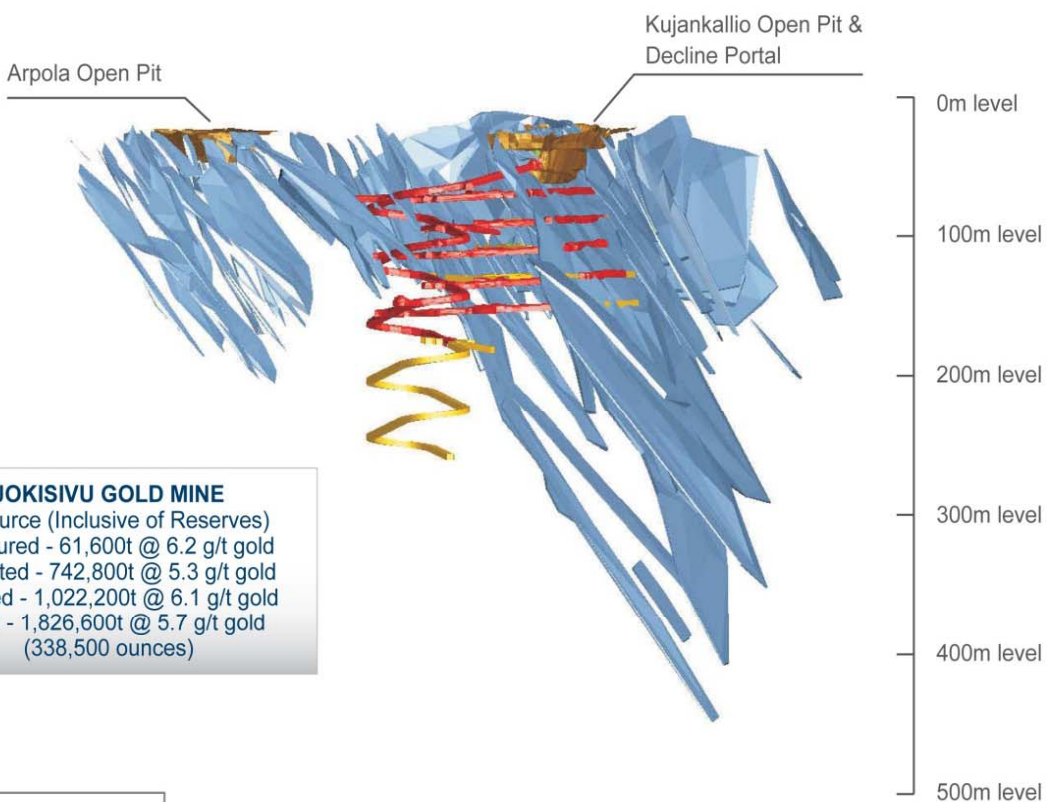
Extended Mine Life





Jokisivu Gold Mine

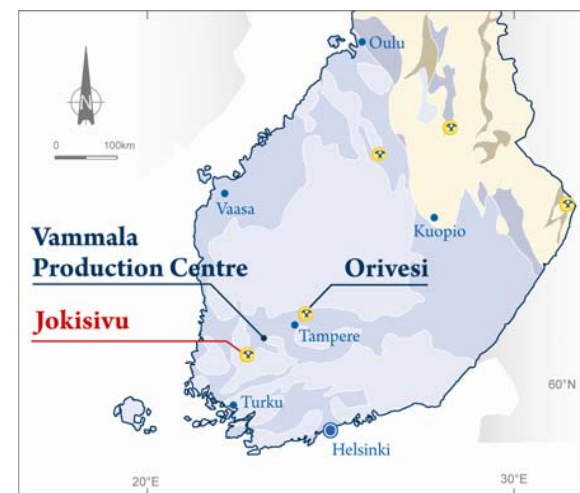
Extended Mine Life



JOKISIVU GOLD MINE
 Resource (Inclusive of Reserves)
 Measured - 61,600t @ 6.2 g/t gold
 Indicated - 742,800t @ 5.3 g/t gold
 Inferred - 1,022,200t @ 6.1 g/t gold
 Total - 1,826,600t @ 5.7 g/t gold
 (338,500 ounces)

LEGEND

- Development Completed
- Planned Development

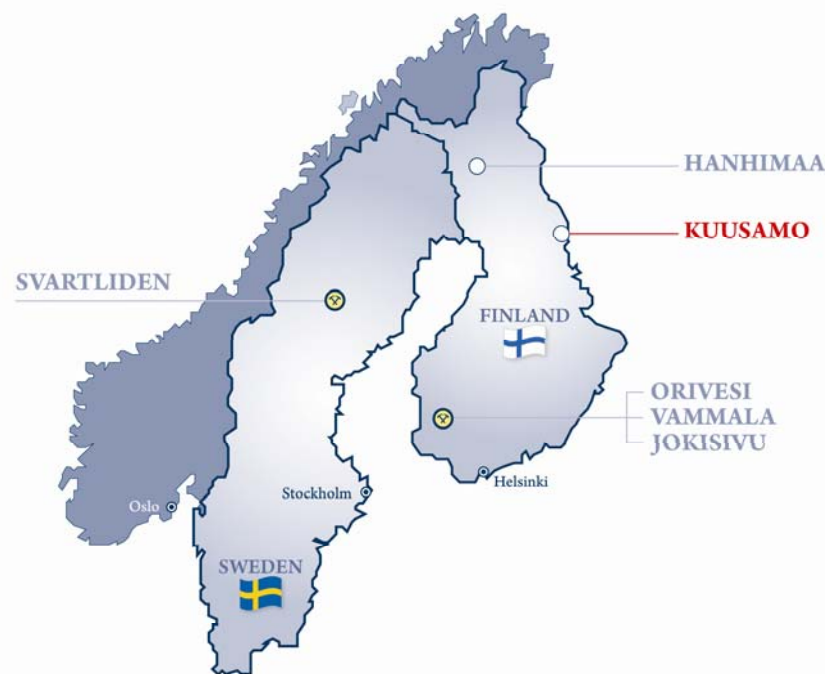




Kuusamo Gold Project

Game Changer

- High grade open pit resource
- **2,189,000 tonnes @ 5.4 g/t gold** (383,500 ounces)
- Potential for million ounce gold camp*.
- Aggressive exploration strategy focussed on Kuusamo North.
- 3 rigs active with plans to drill up to 100,000 metres to confirm depth and strike extensions.
- **Recent outstanding drill intercepts:**
 - **31.90m @ 45.67 g/t gold**
 - **25.60m @ 9.66 g/t gold**
 - **34.90m @ 9.30 g/t gold**

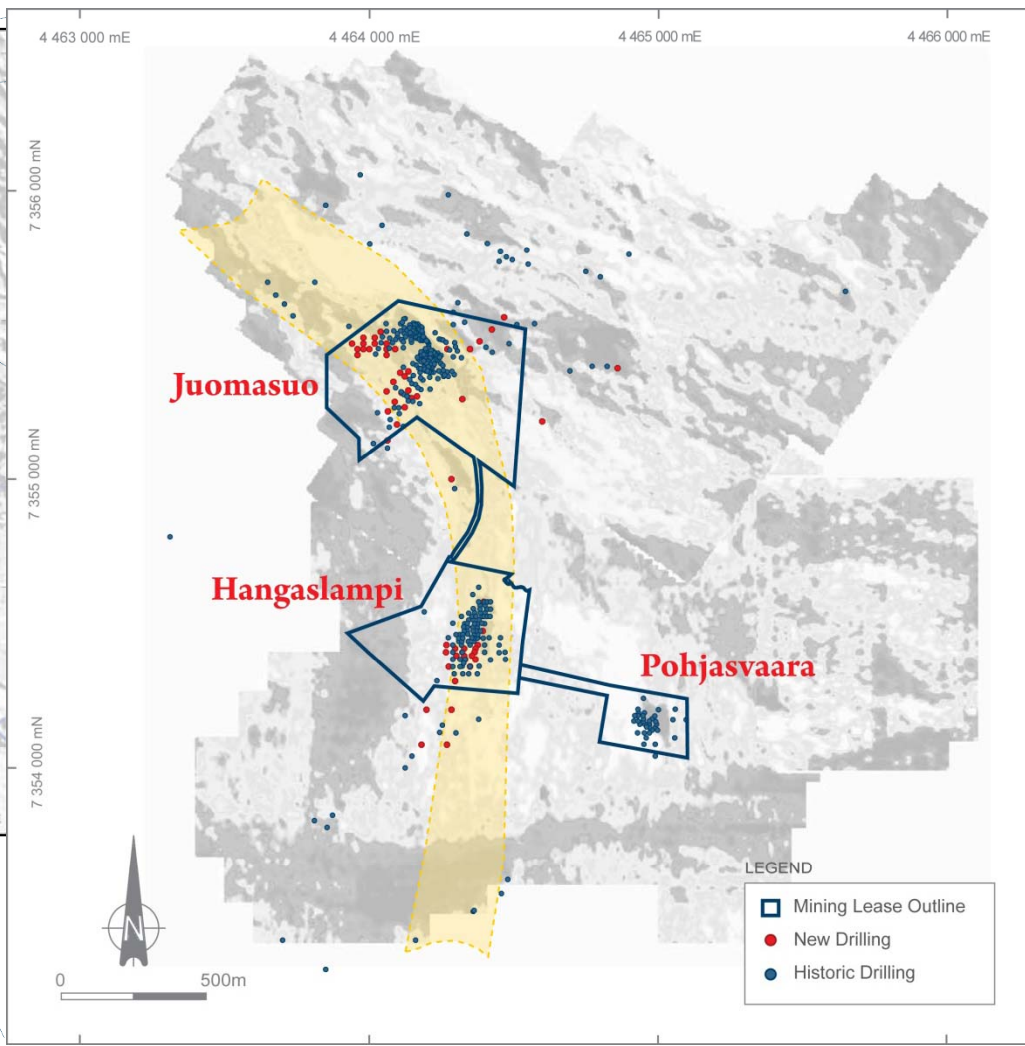
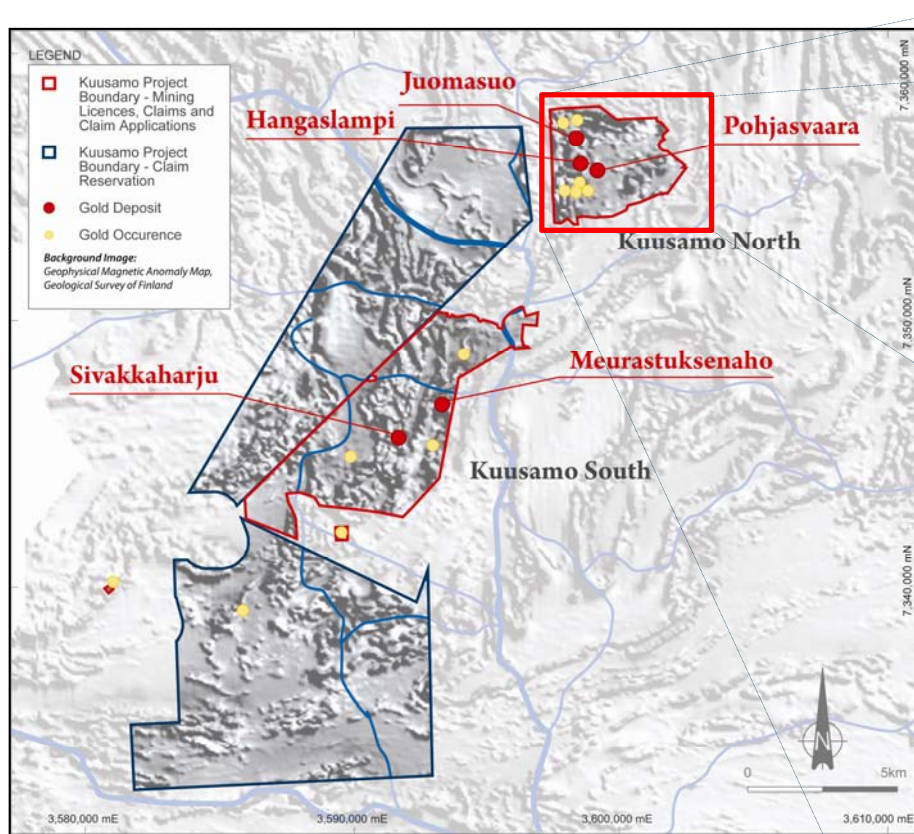


* Refer to Slide – Notations (1)



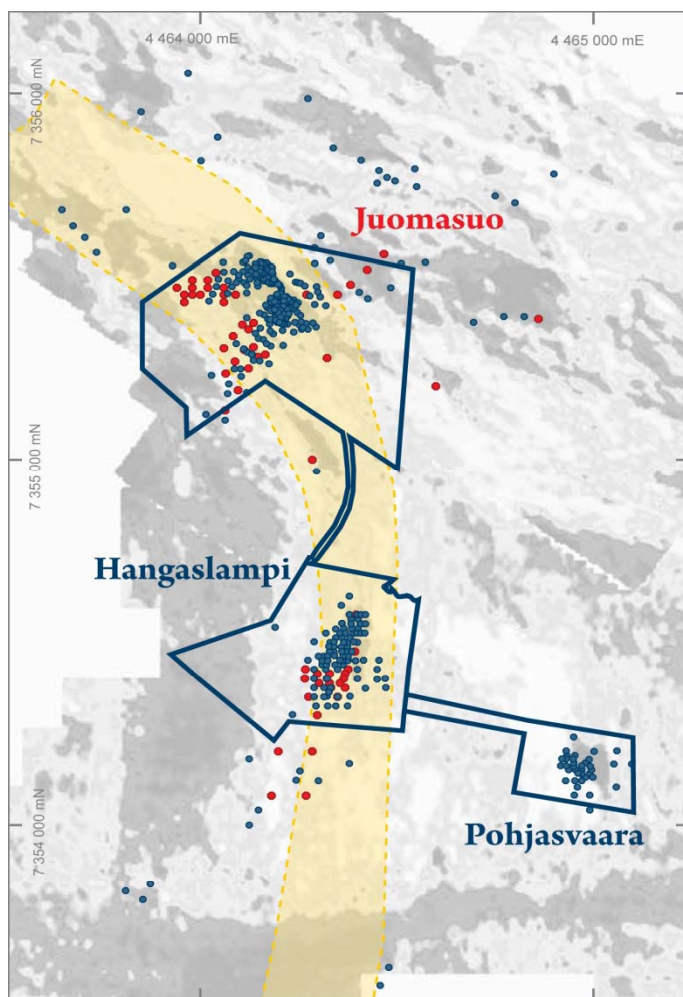
Kuusamo North

Emerging Gold Camp



Kuusamo North

Juomasuo Deposit



- **1,400,000 tonnes @ 5.7 g/t gold**
(259,300 ounces)
- Multiple, sub-parallel, steeply dipping lodes.
- 298 historic drill holes for 17,191m.
- **Bonanza historic intercepts:**
 - **57.30m @ 62.56 g/t gold**
 - **3.70m @ 426.98 g/t gold**
 - **21.30m @ 58.79 g/t gold**
 - **5.30m @ 206.85 g/t gold**
 - **8.00m @ 48.85 g/t gold**



Kuusamo North

Juomasuo Deposit

➤ 50 drill holes for 12,815m completed.

➤ **New highlight intercepts:**

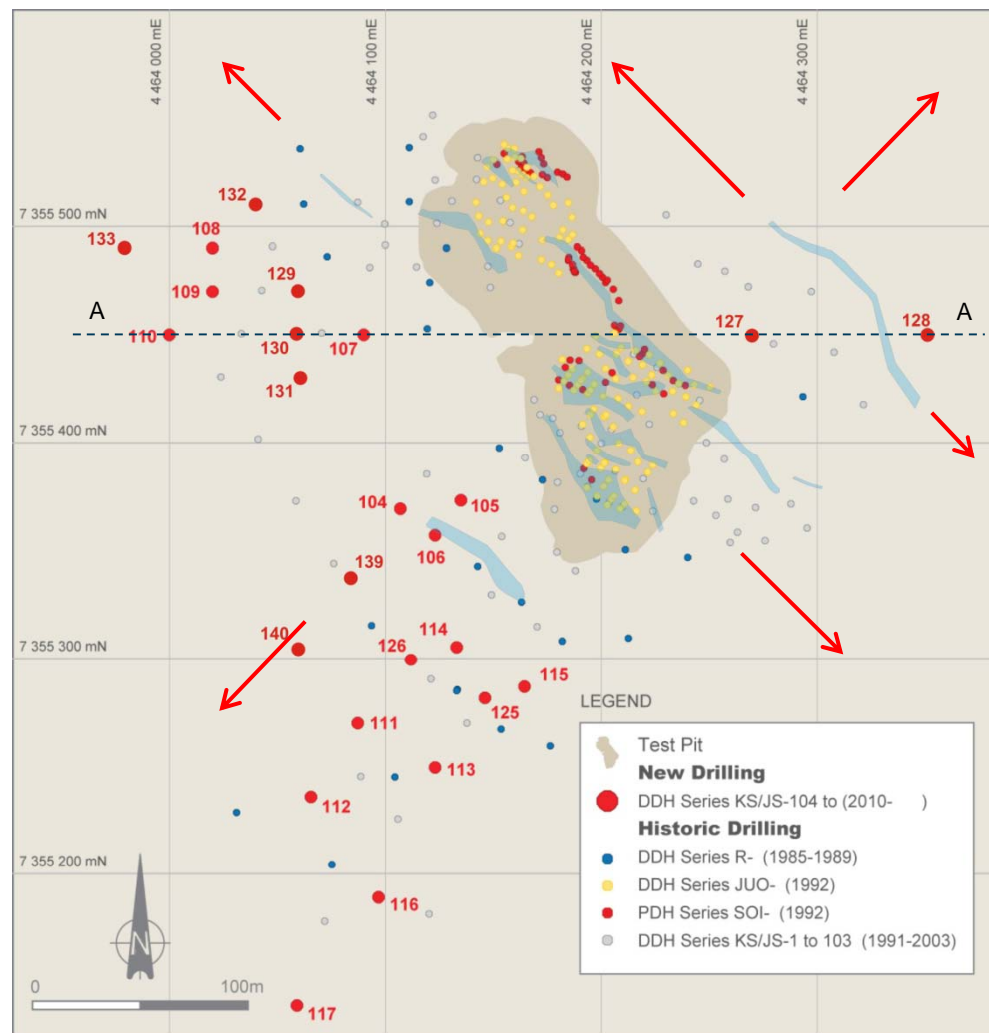
- **14.55m @ 4.81 g/t gold**
- **11.85m @ 5.30 g/t gold**
- **5.30m @ 12.97 g/t gold**
- **7.30m @ 8.18 g/t gold**
- **34.90m @ 9.30 g/t gold**
- **25.60m @ 9.66 g/t gold**
- **31.90m @ 45.67 g/t gold**

➤ Open along strike and with depth.

➤ Potential for additional lateral lodes.

Target – 600,000 to 800,000 ounces*

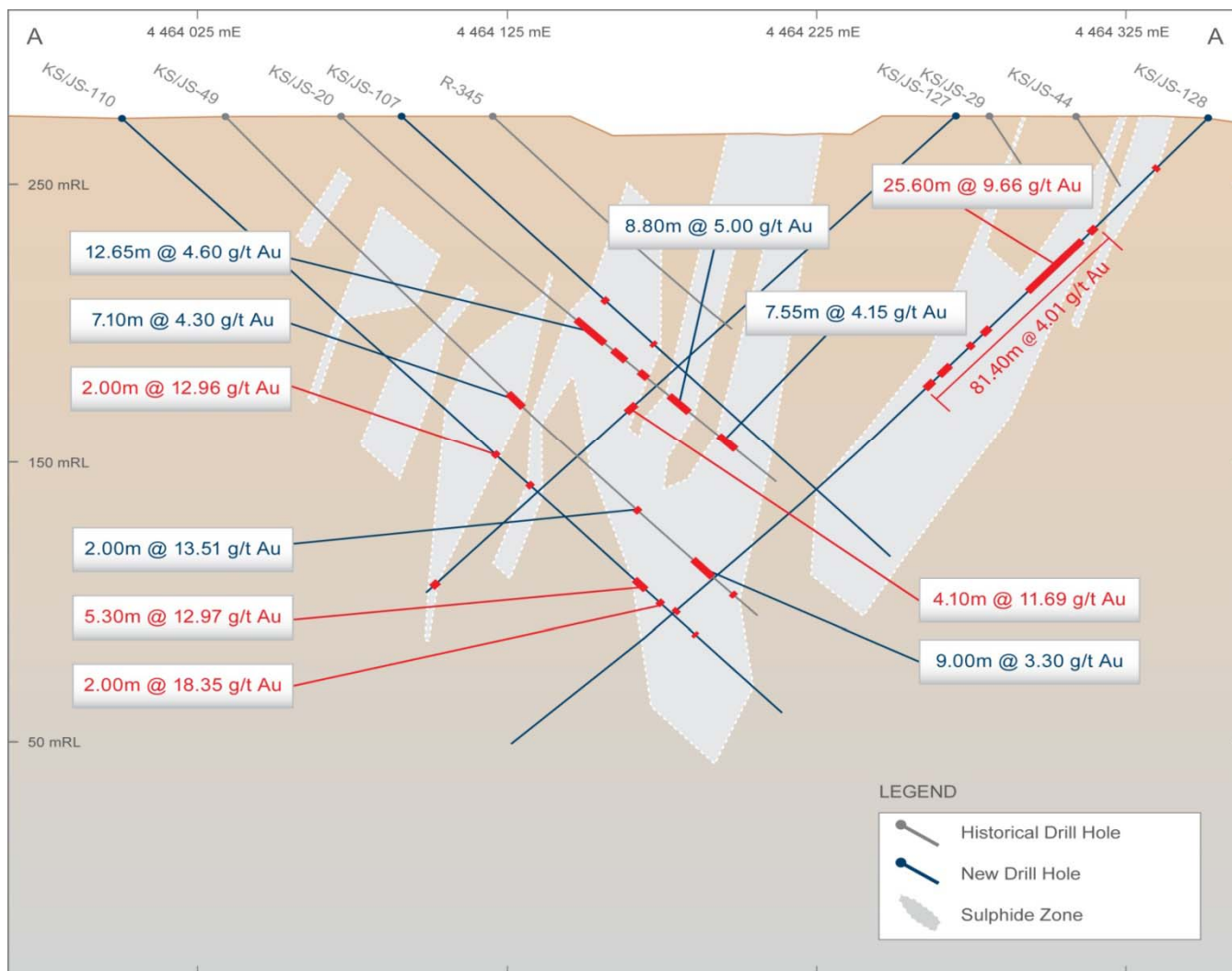
* Refer to Slide – Notations (2)





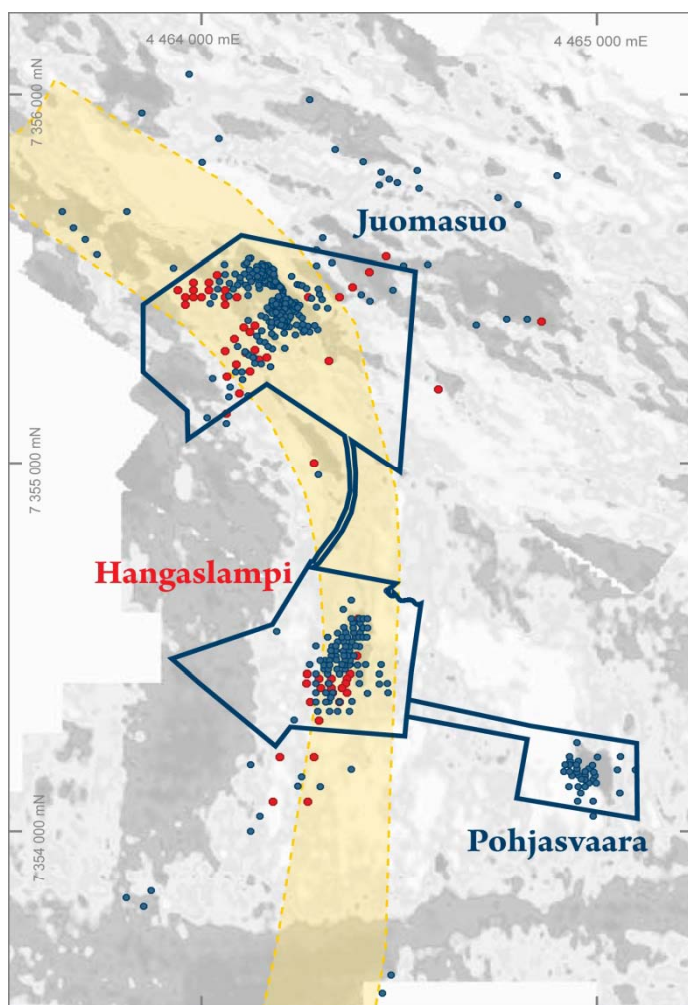
Kuusamo North

Juomasuo Deposit



Kuusamo North

Hangaslampi Deposit



- **280,000 tonnes @ 6.2 g/t gold** (55,700 ounces).
- Set of moderately dipping lodes striking N-S.
- 60 historical drill holes for 8,346m.
- **Exceptional historical intercepts:**
 - **23.50m @ 13.25 g/t gold**
 - **26.95m @ 5.78 g/t gold**
 - **19.20m @ 7.00 g/t gold**
 - **21.05m @ 13.70 g/t gold**
 - **13.00m @ 20.41 g/t gold**



Kuusamo North Hangaslampi Deposit

➤ 25 holes for 2,542m completed.

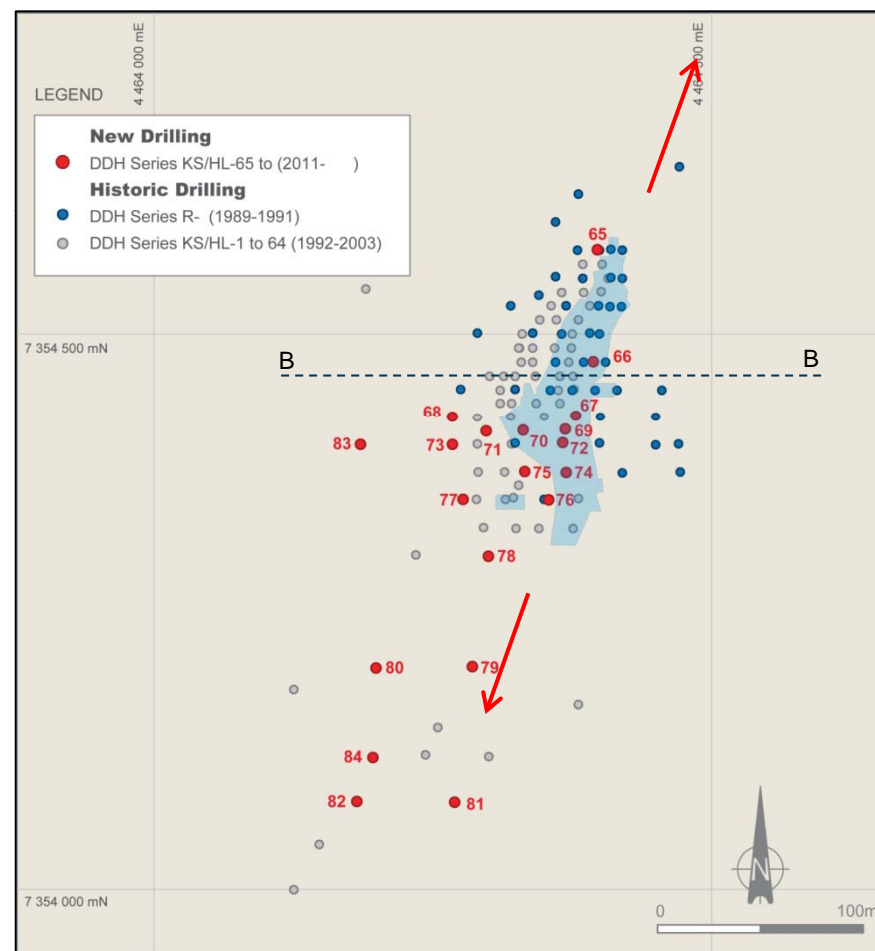
➤ **New highlight intercepts:**

- **9.00m @ 30.17 g/t gold**
- **12.45m @ 7.15 g/t gold**
- **6.00m @ 7.51 g/t gold**

➤ Open along strike and with depth.

Target – 150,000 to 300,000 ounces*

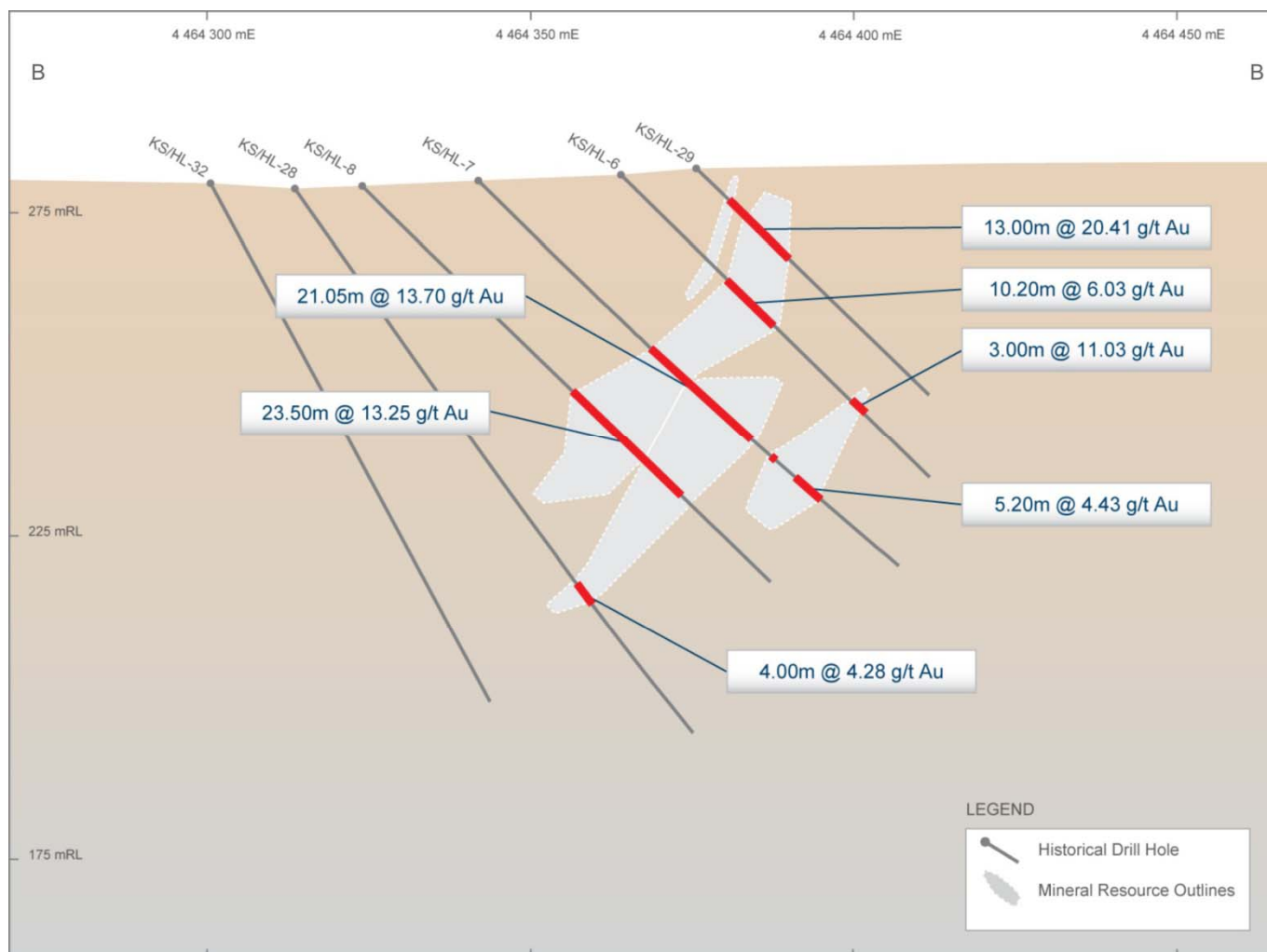
* Refer to Slide – Notations (3)





Kuusamo North

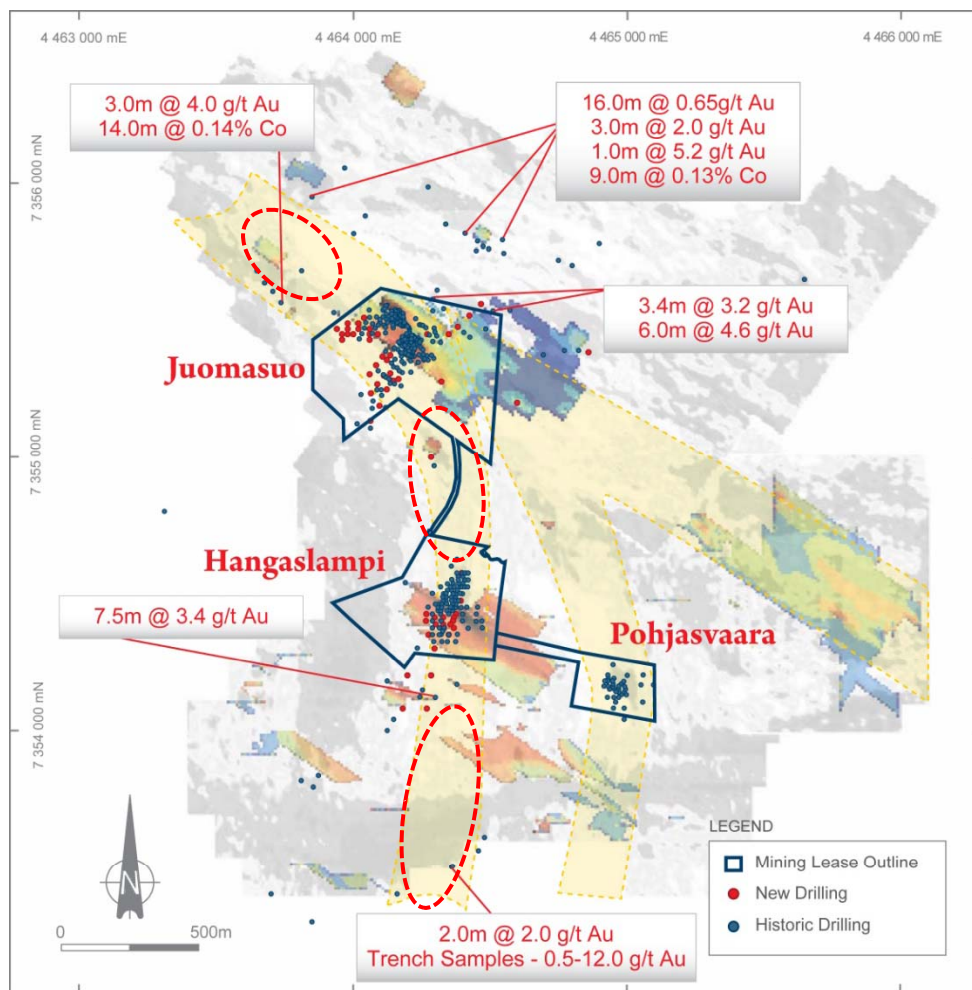
Hangaslampi Deposit





Kuusamo North

Stand Out Target Areas





Kuusamo Gold Project

Project Development



Metallurgy and Flow Sheet Development

- Trial mining and processing of Juomasuo ore in 1990's.
- Test work program in development.

Environmental Impact Assessment

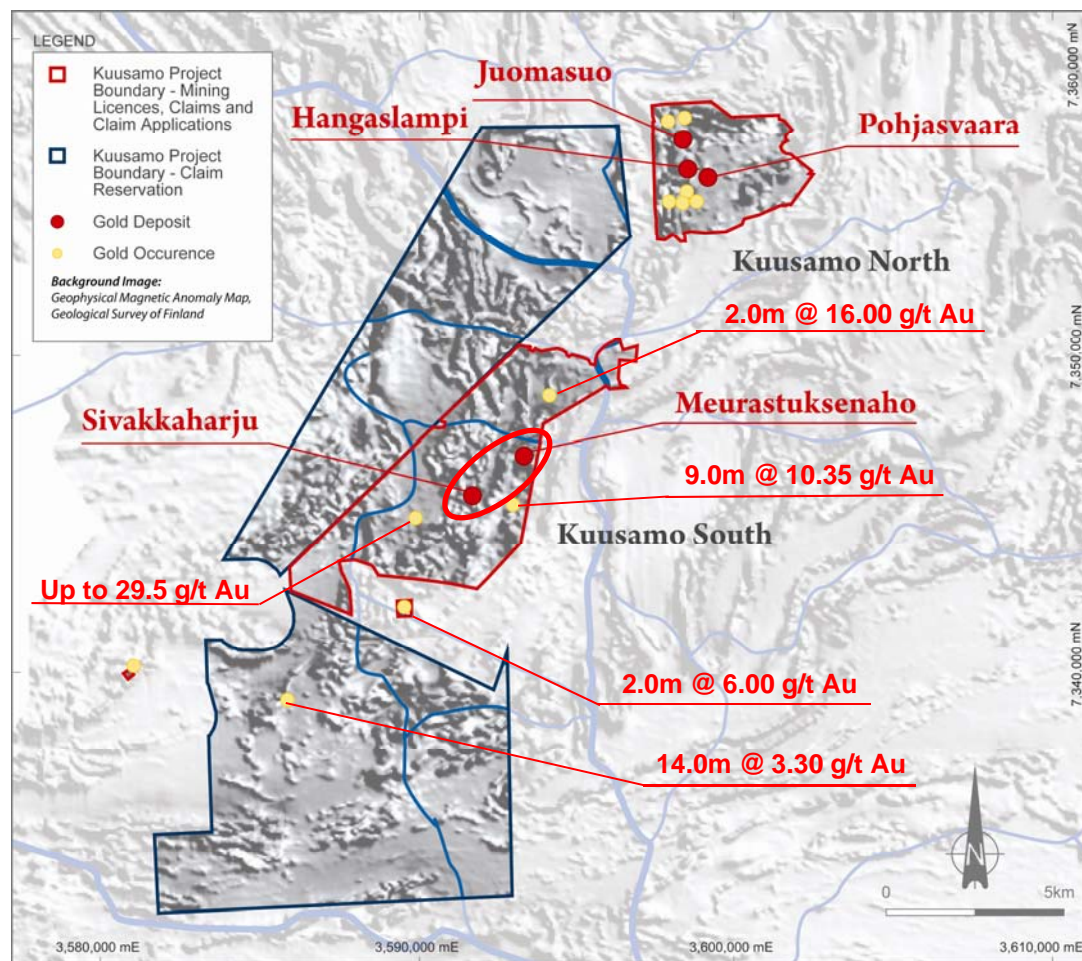
- Established good local community and municipal dialogue with open briefings.
- Program commenced November 2010 by European consultancy group, Ramboll.



Kuusamo Gold Project

Regional Potential

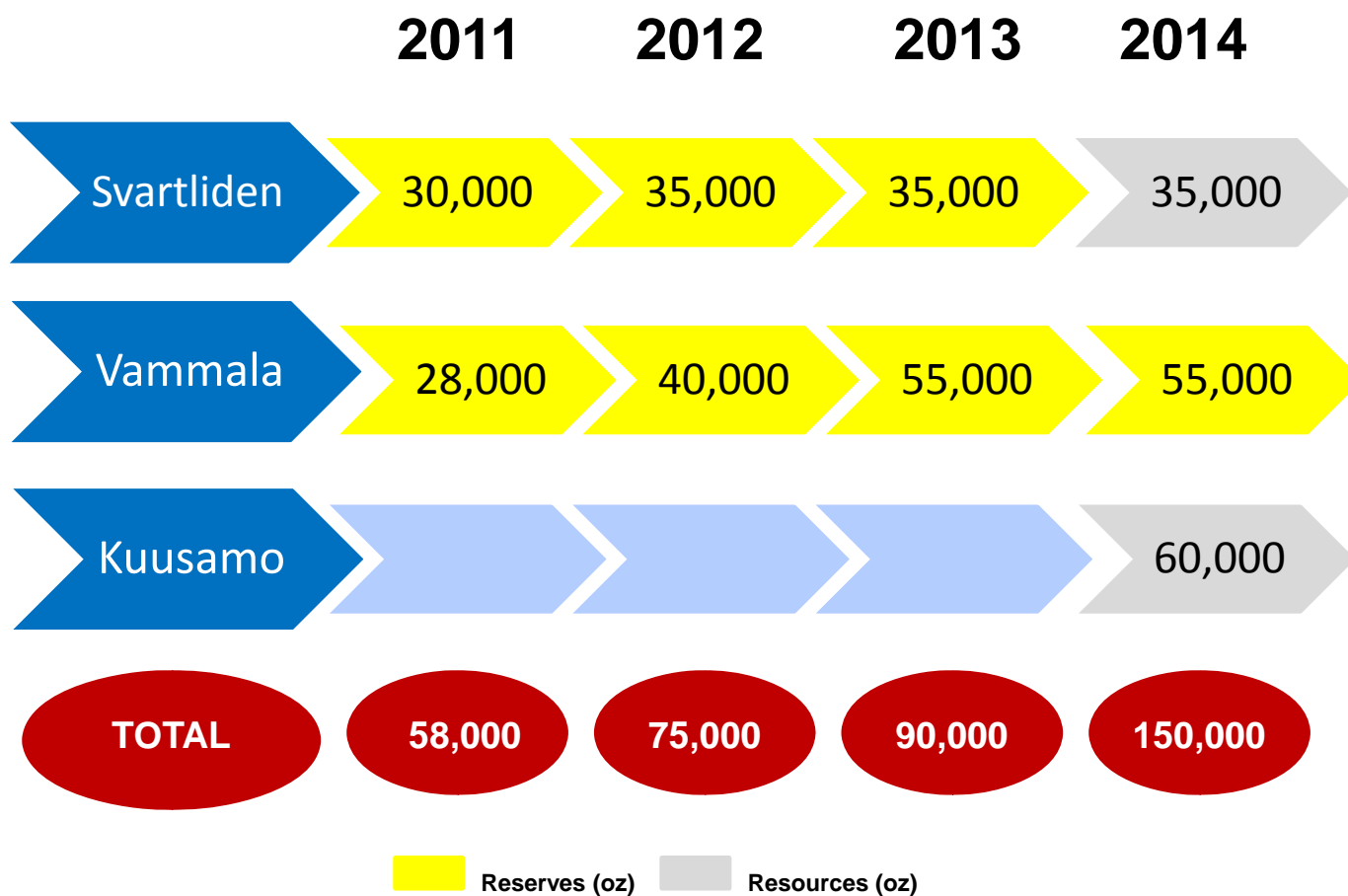
- 200km² holding.
- Highly prospective.
- Excellent targets.
- Gold deposits Meurastuksenaho (42,400 ounces @ 3.6 g/t gold) and Sivakkaharju (11,300 ounces @ 7.5 g/t gold).
- Gold drill intercepts and rock samples.





Production Project Pipeline

Moving to a 150,000 Ounce Gold Producer!





Investment Opportunity

- ✓ Two established and profitable production centres
- ✓ 1.1 million ounces of Resources
- ✓ Outstanding game changing exploration project
- ✓ Strong cash balance to aggressively grow assets
- ✓ Moving to 150,000 ounce gold producer
- ✓ **Production, Cashflow, Growth – Exciting Future**

Appendices

Gold Resource Inventory

Classification	Tonnes	Gold (g/t)	Ounces
Svartliden Gold Mine, Sweden (31 July 2011)			
Measured	197,900	3.8	24,300
Indicated	1,034,600	3.7	125,400
Inferred	62,600	3.7	7,400
Total	1,295,100	3.8	157,100
Vammala Production Centre, Finland (31 December 2010)			
Measured	193,600	6.5	40,200
Indicated	1,311,200	5.2	217,800
Inferred	1,667,400	6.0	325,300
Total	3,172,200	5.7	583,200
Kuusamo Gold Project, Finland (31 December 2010)			
Measured	-	-	-
Indicated	786,000	7.0	177,000
Inferred	1,404,000	4.6	206,500
Total	2,189,000	5.4	383,500
Group Total			
Measured	391,500	5.1	64,500
Indicated	3,131,800	5.2	520,200
Inferred	3,134,000	5.3	539,200
Total	6,656,300	5.2	1,123,800