



10 November 2011

Bullabulling Gold Project – Resource Drilling Update November

Highlights:

- **59 drill holes totalling 11,163m were completed in October and early November 2011.**
- **Phase Two programme has drilled 319 holes (57,657m) out of a planned 70,000m development programme which commenced in May 2011.**
- **Total Phase One and Two development drilling since Q4 2010 now stands at 93,913m in 565 drill holes.**
- **Approximately 99% of drill holes have intersected gold mineralisation with only 7 not mineralised.**
- **Drilling results continue to reconcile well against the latest gold JORC resource model and give confidence for the next JORC upgrade due in Q1 2012.**
- **Principle goal is to increase the 711,000 ounces of existing indicated resource by moving a significant portion of the 1.9m ounces of inferred resource into the higher indicated category out of the current 2.6m JORC ounces.**
- **New higher grade intersections include:**
 - **1m @ 48.80 g/t Au** from 182m and
 - **16m @ 1.75 g/t Au** from 63m in hole BJ1297,
 - **9m @ 13.32 g/t Au** from 195m and
 - **15m @ 1.39 g/t Au** from 161m in hole BJ0371,

- **1m @ 12.50 g/t Au** from 61m in hole BJ2012,
 - **2m @ 5.01 g/t Au** from 55m in hole BJ2085,
 - **2m @ 3.99 g/t Au** from 76m in hole BJ2338,
 - **9m @ 3.52 g/t Au** from 113m in hole BJ1945,
 - **2m @ 3.48 g/t Au** from 82m in hole BJ2160,
 - **13m @ 3.45 g/t Au** from 92m in hole BJ1257,
 - **20m @ 3.45 g/t Au** from 21m with
12m @ 1.97 g/t Au from 58m and
12m @ 1.77 g/t Au from 133m in hole BJ0405,
 - **10m @ 2.61 g/t Au** from 125m and
14m @ 1.94 g/t Au from 44m in hole BJ0261,
 - **14m @ 2.51 g/t Au** from 130m in hole BJ2083,
 - **10m @ 2.48 g/t Au** from 45m in hole BJ0466,
 - **19m @ 2.48 g/t Au** from 19m in hole BJM024,
 - **14m @ 2.41 g/t Au** from 21m and
26m @ 0.83 g/t Au from 62m in hole BJ0381,
 - **14m @ 2.40 g/t Au** from 65m in hole BJ2066,
- **A new exploration programme has been planned to test regional structures and anomalies identified by recent regolith mapping.**
 - **Raw data has been received from the recently completed airborne magnetic survey aimed at assessing deeper mineralisation and is currently being reviewed.**

Jeff Malaihollo, Managing Director of GGG Resources comments:

“These latest results continue to confirm the resource and geological model with approximately 99% of the drill holes hitting gold mineralisation.

“The drilling also continues intersecting regularly higher grade mineralisation within the broad low grade halo which provide encouragement for targeting high grade ore shoots within the Bullabulling Trend beneath the low grade, open pit resource.”

Resource drilling programme update

The Phase Two RC resource drilling programme is nearing completion. There are currently three drill rigs working on the Phase Two programme infilling the historic drilling between Phoenix and Hobbit to increase the confidence in the current resource base (Figure 1).

A key aim of the Phase Two resource drilling programme is to infill the current and historic drilling to a drill spacing that allows the Inferred resources in the recently announced resource estimate to be reclassified to an Indicated resource category, and in turn enable initial JORC compliant reserves to be established for the project. The current reported JORC compliant mineral resource is 78,836,000 tonnes at 1.03 g/t Au (2.60 million ounces contained gold) at a 0.5 g/t Au cut off.

The Phase Two drilling programme started on May 14 and since the last announcement where results were reported to September 30, there has been a total of 11,163 metres drilled in 59 holes (Table 1). Total drilling for the Phase Two programme is 57,657m in 319 holes and production since work started on the project by the JV is 93,913m from 565 holes. Drilling during the reporting period focussed on infill drilling of the areas between Hobbit and Bonecrusher (Figure 1).

Assays from the infill drilling continue to confirm the resource estimate and geological model (Table 2).

Better intersections from the Phase Two drilling results received during the reporting period include:

16m @ 1.75 g/t Au from 63m and **1m @ 48.80 g/t Au** from 182m in hole BJ1297,
15m @ 1.39 g/t Au from 161m and **9m @ 13.32 g/t Au** from 195m in hole BJ0371,
1m @ 12.50 g/t Au from 61m in hole BJ2012,
2m @ 5.01 g/t Au from 55m in hole BJ2085,
2m @ 3.99 g/t Au from 76m in hole BJ2338,
9m @ 3.52 g/t Au from 113m in hole BJ1945,
2m @ 3.48 g/t Au from 82m in hole BJ2160,
13m @ 3.45 g/t Au from 92m in hole BJ1257,
20m @ 3.45 g/t Au from 21m, 12m @ 1.97 g/t Au from 58m and 12m @ 1.77 g/t Au from 133m in hole BJ0405,
10m @ 2.61 g/t Au from 125m and 14m @ 1.94 g/t Au from 44m in hole BJ0261,
14m @ 2.51 g/t Au from 130m in hole BJ2083,
10m @ 2.48 g/t Au from 45m in hole BJ0466,
19m @ 2.48 g/t Au from 19m in hole BJM024,
14m @ 2.41 g/t Au from 21m and 26m @ 0.83 g/t Au from 62m in hole BJ0381,
14m @ 2.40 g/t Au from 65m in hole BJ2066,
18m @ 1.60 g/t Au from 146m and 11m @ 1.19 g/t Au from 237m in hole BJ2070,
12m @ 1.55 g/t Au from 94m in hole BJ1921,

14m @ 1.45 g/t Au from 35m and 12m @ 1.17 g/t Au from 126m in hole BJ1996,
19m @ 1.31 g/t Au from 123m in hole BJ0384,
12m @ 1.30 g/t Au from 90m in hole BJ0370,
17m @ 1.15 g/t Au from 42m in hole BJ2106 and
25m @ 0.98 g/t Au from 28m in hole BJ0718.

There have been only seven drill holes that have not intersected mineralisation out of the 565 holes drilled since the programme started (**approximately 99% of the holes are hitting mineralisation**).

As in the previously announced holes, there are generally at least 4 intersections per drill hole relating to the multiple stacked lodes defined by the structural mapping. Approximately 60% of the intersections to date are better than estimated by the model, 34% are similar to the model and 6% are worse or missing as predicted by the new model developed by Snowden. High grade mineralisation continues to be intersected within the broad low grade halo with intersections such as **9m @ 13.32 g/t Au from 195m** in hole BJ03711, **9m @ 3.52 g/t Au from 113m** in hole BJ1945, **13m @ 3.45 g/t Au from 92m** in hole BJ1257, **20m @ 3.45 g/t Au from 21m** in hole BJ0405 and **10m @ 2.61 g/t Au from 125m** in hole BJ0261 providing encouragement for targeting high grade ore shoots within the Bullabulling Trend beneath the currently mineralised stratigraphy.

Near Surface Exploration Follow up Drill Planning

The review of the soil geochemistry database completed using historical soil data in combination with photo-mapping of regolith identified six regional scale targets that require follow up exploration drilling. Drill planning for this work has been completed. The exploration drilling will follow on from the current Phase Two infill drilling programme and exploration along the Gibraltar Trend and to the south of the Bullabulling Trend have been incorporated into the exploration work plan. The aim of the exploration drilling is to test for regional extensions to known mineralisation and to better define the geology, especially in the south. The programme will consist of 340m at Kraken, 1,520m at Gryphon, 700m at Edwards, 2,500m on the southern Exploration Licence (Rhea) and 2,000m along strike from Gibraltar (Figure 1). Two separate "Programme of Works" have been lodged with the Department of Mines covering these prospects and these are anticipated to be approved by the New Year, with drilling expected to take between 46 and 60 days and that will extend into late February.

Deeps Exploration Programme

Planning the Deeps exploration programme continued with magnetic and radiometric data acquisition completed over the Bullabulling shear zone. The new data are significantly more detailed than previously available and will lead to a better understanding of the geology and structure of the Bullabulling region (Figure 2). The data will now be analysed to produce a number of filtered geophysical images, unconstrained inversions over the Bullabulling Trend and a geological and structural interpretive map of the study area.

The study of the seismic reflectance properties of the host rocks to assess the potential for using 2D seismic geophysics to map the geology of Bullabulling at depth has been completed and recommendations received. Large variations in both elastic and acoustic impedances, the product of compressional velocity and sample density, were found throughout the Bullabulling Trend stratigraphy. Reflection values in the rock suite encompass a wide range of adequately reflective values (2.9% through to +30%). From the results of the petrophysical analysis undertaken by Curtin University of Technology's Geophysics Department, it appears that adequate reflection can be determined across many of the dominant lithological interfaces in the Bullabulling region such that the major geological structure is likely to image clearly to a depth of 1,500m. Detailed planning of the survey lines will now be finalised and a detailed work plan and timeline for data delivery will be completed.

A combination of the detailed magnetic data will be used in combination with 2D seismic and gravity to develop a detailed 3D model of the structure and geology of the Bullabulling Trend. This model will then be used to target mineralisation at depth.

Contacts:

David McArthur GGG Resources plc (Australia) 41 Stirling Highway Nedlands, WA, 6009 Australia Tel: +61 8 9423 3200	David Brook Professional Public Relations (Australia Media) Email: david.brook@ppr.com.au Tel: +61 8 9388 0944 / +61 433 112 936
Dr. Jeffrey Malaihollo Managing Director, GGG Resources plc (UK) Email: jeff.malaihollo@gggresources.com Tel: +44 1992 531820	Westhouse Securities Limited (UK Nominated Adviser) Tom Price / Martin Davison Tel: +44 20 7601 6100
Neil Boom MD, Gresham PR Ltd (UK media) Tel: +44 7866 805 108 Email:neil.boom@greshampr.co.uk	Collins Stewart Europe Limited (Broker) John Prior / Adam Miller Tel: +44 20 7523 8350

Bullabulling Overview

The Bullabulling Gold project (Bullabulling) is a large tonnage, low grade deposit with high grade shoots, associated with the regional Bullabulling shear zone which extends over tens of kilometres. The mineralised structure is 500m wide, consisting of multiple west dipping low grade stacked zones with narrower higher grade gold mineralisation. Bullabulling is located near Coolgardie and approximately 65km south-west of Kalgoorlie, Western Australia. Bullabulling has been previously mined producing 371k oz Au in the 1990's. The current programme focuses on the 6km portion of the shear zone known as the Bullabulling Trend where previous operations were concentrated. The focus for the Bullabulling joint venture between Auzex Resources Ltd and GGG Resources plc is to establish an initial reserve exceeding one million ounces gold to commence production in 2015.

Competent Person Statement

The information in this report that relates to Exploration Results, Mineral Resources and Ore Reserves is based on information compiled by Jeff Malaihollo PhD who is a full-time employee of the Company and Member of The Australasian Institute of Mining and Metallurgy and the Geological Society of London. He is qualified as a Competent Person as defined in the 2004 Edition of the "Australasian Code for Reporting of Exploration Results, Mineral Resources and Ore Reserves".

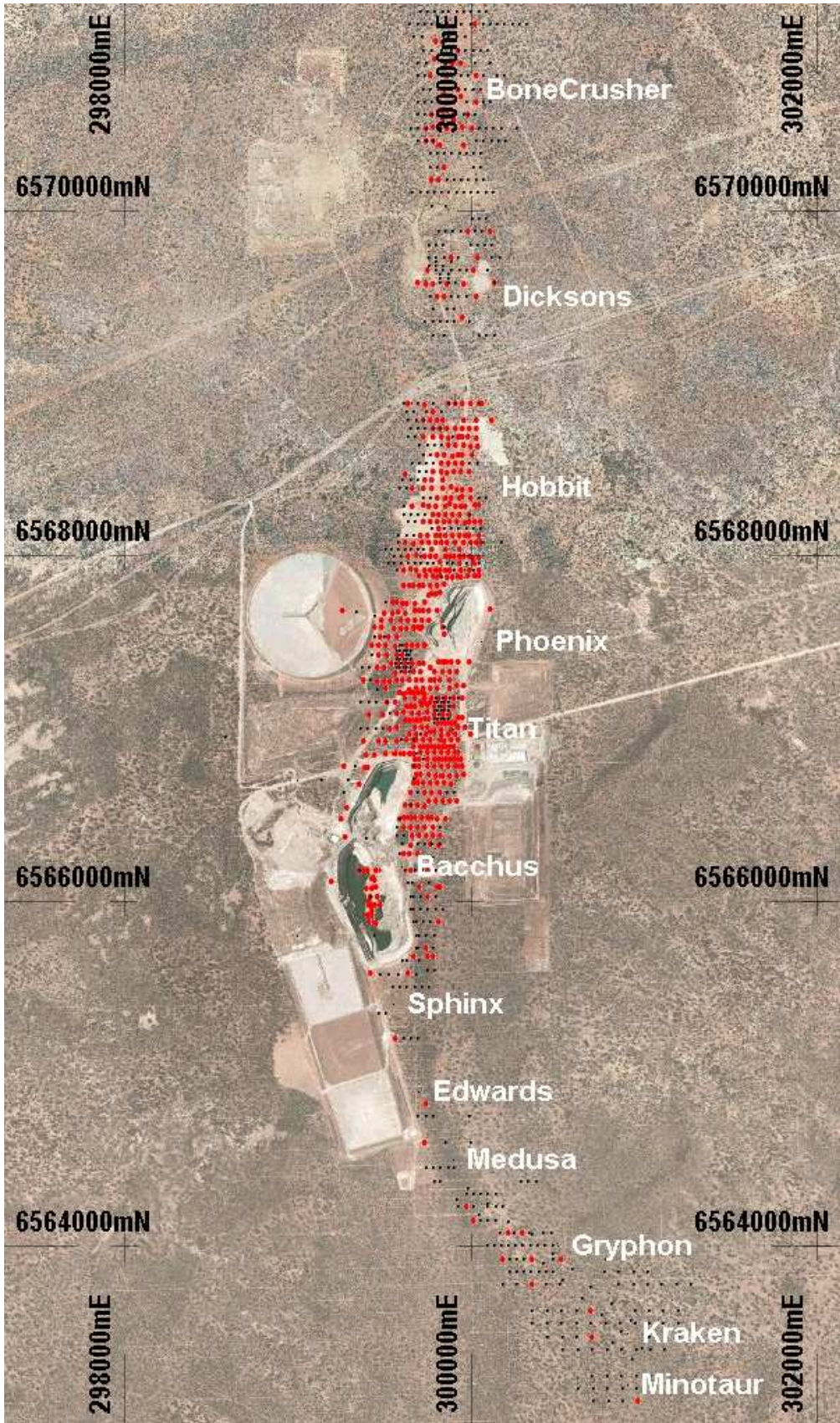


Figure 1. Location of completed RC drill holes (red dots) by the Joint Venture in relation to planned drill holes (black dots).

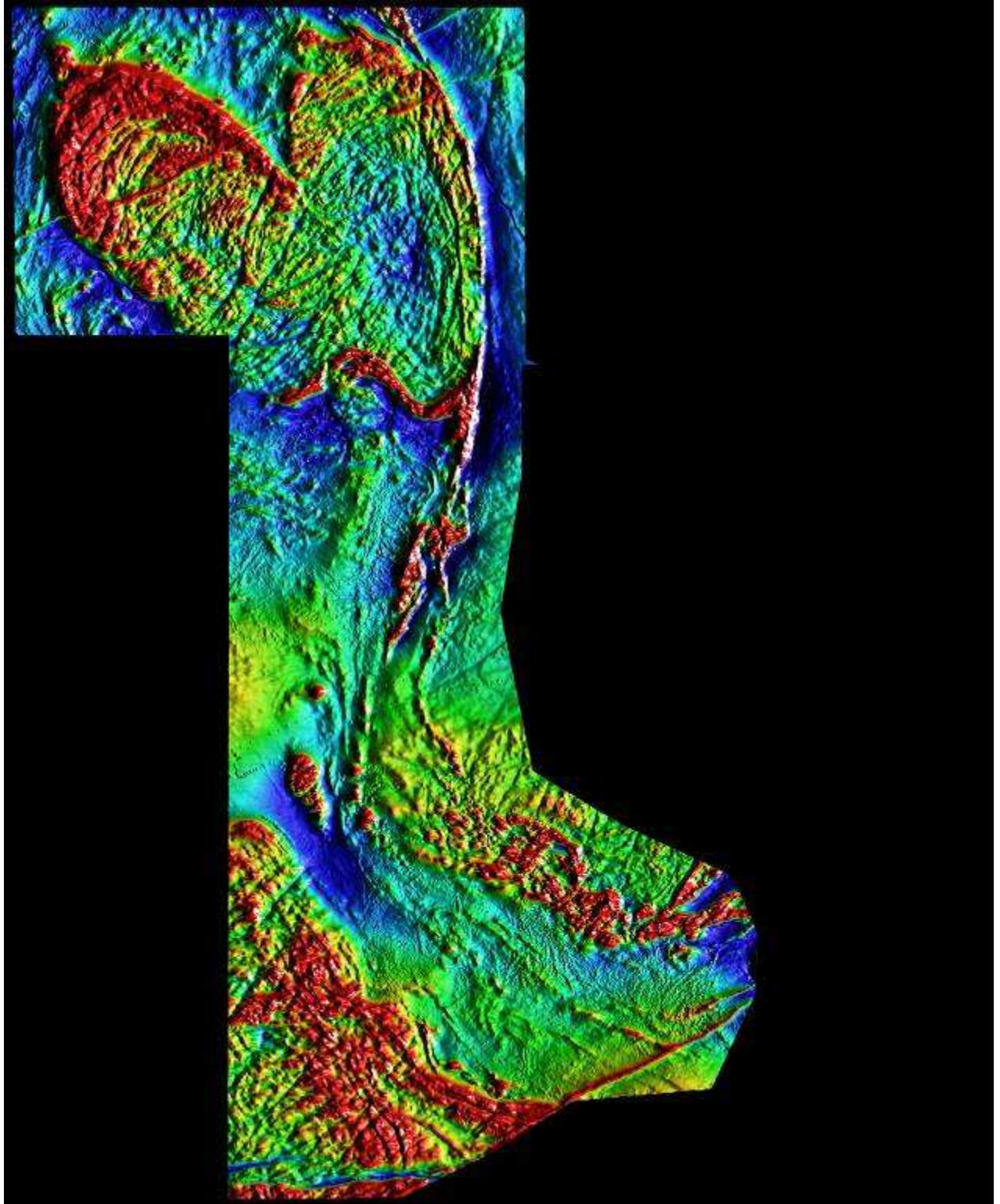


Figure 2. TMI image with sunshade from new magnetic survey. Note the detail of the survey is such that individual power poles can be seen on the image.

Table 1: Collar data for RC drilling completed between 30September and 3November 2011

Prospect	Hole	Easting	Northing	RL	Dip	AZ	Date	Length	Comments
HB	BJ0402	299,958	6,568,336	455	-55	90	30/09/2011	151	Pending
HB	BJ0475	300,048	6,568,875	453	-60	90	30/10/2011	121	Pending
HB	BJ0478	299,914	6,568,875	453	-60	90	30/10/2011	184	Pending
HB	BJ0479	299,871	6,568,875	430	-60	90	01/11/2011	199	Pending
DK	BJ0523	300,035	6,569,501	447	-60	90	05/10/2011	199	Pending
DK	BJ0527	299,850	6,569,502	448	-60	90	03/10/2011	181	Pending
DK	BJ0528	299,809	6,569,502	447	-60	90	03/10/2011	151	Mineralised
DK	BJ0539	299,784	6,569,574	444	-60	90	06/10/2011	151	Pending
DK	BJ0541	299,700	6,569,576	444	-60	90	07/10/2011	187	Pending
DK	BJ0544	300,019	6,569,647	447	-60	90	08/10/2011	181	Mineralised
DK	BJ0567	300,040	6,569,723	447	-60	90	09/10/2011	199	Pending
DK	BJ0568	300,114	6,569,877	443	-60	90	12/10/2011	169	Pending
DK	BJ0571	299,986	6,569,875	442	-60	90	13/10/2011	241	Pending
DK	BJ0624	299,780	6,570,175	440	-60	90	14/10/2011	211	Pending
DK	BJ0633	299,852	6,570,250	440	-60	90	15/10/2011	175	Pending
DK	BJ0662	299,784	6,570,400	440	-60	90	17/10/2011	229	Pending
DK	BJ0663	299,742	6,570,400	440	-60	90	19/10/2011	253	Pending
BC	BJ0680	300,009	6,570,475	438	-62	90	13/10/2011	172	Mineralised
BC	BJ0683	299,911	6,570,475	438	-60	90	15/10/2011	199	Pending
BC	BJ0686	299,825	6,570,475	438	-58	90	17/10/2011	175	Pending
BC	BJ0688	299,743	6,570,475	435	-60	90	19/10/2011	253	Pending
BC	BJ0694	299,904	6,570,550	438	-60	90	22/10/2011	193	Pending
BC	BJ0697	299,778	6,570,550	438	-60	90	24/10/2011	228	Pending
BC	BJ0716	300,032	6,570,626	436	-60	90	07/10/2011	187	Mineralised
BC	BJ0718	299,909	6,570,626	432	-60	90	09/10/2011	181	Mineralised
BC	BJ0720	299,822	6,570,626	437	-60	90	13/10/2011	229	Pending
BC	BJ0731	299,931	6,570,700	433	-60	90	02/11/2011	187	Pending
BC	BJ0785	299,944	6,570,850	436	-60	90	20/10/2011	181	Pending
BC	BJ0791	299,902	6,570,850	432	-60	90	21/10/2011	199	Pending
BC	BJ0792	299,860	6,570,850	435	-60	90	23/10/2011	223	Pending
BC	BJ0816	299,932	6,570,925	430	-60	90	24/10/2011	157	Pending
HB	BJ1297	299,617	6,567,916	441	-60	90	02/10/2011	205	Mineralised
HB	BJ1380	299,716	6,568,114	446	-66	90	30/09/2011	205	Mineralised
HB	BJ1924	299,825	6,568,735	455	-60	90	03/11/2011	211	Pending
HB	BJ1925	299,783	6,568,735	455	-60	90	03/11/2011	230	Pending
HB	BJ1948	299,728	6,568,785	455	-60	90	31/10/2011	259	Pending
BE	BJ1993	299,784	6,566,424	428	-60	90	11/10/2011	120	Pending
BE	BJ1994	299,739	6,566,426	428	-60	90	12/10/2011	131	Pending
BE	BJ1996	299,654	6,566,425	429	-60	90	15/10/2011	180	Mineralised
BE	BJ2003	299,822	6,566,625	430	-60	90	16/10/2011	128	Pending
TI	BJ2021	299,523	6,567,150	435	-60	90	29/10/2011	211	Pending
PH	BJ2051	299,647	6,567,274	434	-60	90	30/09/2011	211	Mineralised
PH	BJ2055	299,506	6,567,272	433	-62	90	02/10/2011	247	Pending

Prospect	Hole	Easting	Northing	RL	Dip	AZ	Date	Length	Comments
PH	BJ2065	299,462	6,567,347	433	-60	90	04/10/2011	241	Mineralised
TI	BJ2096	299,874	6,566,782	431	-90	0	30/09/2011	132	Mineralised
BE	BJ2112	299,698	6,566,550	429	-60	90	21/10/2011	192	Pending
BE	BJ2113	299,656	6,566,550	429	-80	90	01/11/2011	211	Pending
BE	BJ2114	299,623	6,566,550	429	-60	90	24/10/2011	216	Pending
DK	BJ2118	299,888	6,569,723	447	-60	90	11/10/2011	199	Pending
BC	BJ2125	299,988	6,570,550	437	-60	90	23/10/2011	151	Pending
TI	BJ2160	299,473	6,566,926	431	-60	90	04/10/2011	192	Pending
PH	BJ2188	299,428	6,567,476	435	-60	90	10/10/2011	252	Pending
BE	BJ2198	299,738	6,566,625	431	-60	90	18/10/2011	168	Pending
BE	BJ2200	299,654	6,566,625	431	-60	90	19/10/2011	210	Pending
BE	BJ2276	299,820	6,566,318	428	-60	90	02/11/2011	78	Pending
BE	BJ2277	299,773	6,566,325	428	-60	90	02/11/2011	90	Pending
TI	BJ2341	299,557	6,566,850	430	-65	90	29/10/2011	235	Pending
BE	BJ2343	299,595	6,566,475	427	-80	90	29/10/2011	204	Pending
BC	BJ2344	299,903	6,570,522	437	-90	0	05/10/2011	108	Mineralised

Table 2: Intersection summary from drill assays received between 30 September and 3 November 2011

Hole	From	To	Width	Au g/t	Includes
BJ0045	47.00	52.00	5.00	0.67	
BJ0045	58.00	70.00	12.00	1.97	includes 1 m @ 16.00 g/t Au from 58m
BJ0045	75.00	77.00	2.00	0.48	
BJ0045	96.00	101.00	5.00	0.79	
BJ0045	133.00	141.00	8.00	0.70	
BJ0045	159.00	161.00	2.00	1.45	
BJ0045	177.00	179.00	2.00	0.45	
BJ0173	42.00	44.00	2.00	0.40	
BJ0173	81.00	83.00	2.00	3.09	
BJ0196	148.00	151.00	3.00	0.87	
BJ0196	152.00	165.00	13.00	1.03	
BJ0196	170.00	172.00	2.00	1.57	
BJ0196	189.00	191.00	2.00	0.37	
BJ0196	194.00	197.00	3.00	0.42	
BJ0196	237.00	239.00	2.00	0.62	
BJ0196	241.00	243.00	2.00	0.32	
BJ0196	244.00	258.00	14.00	0.82	
BJ0261	44.00	58.00	14.00	1.94	includes 7 m @ 3.12 g/t Au from 44m
BJ0261	75.00	80.00	5.00	1.09	
BJ0261	82.00	85.00	3.00	0.45	
BJ0261	100.00	103.00	3.00	2.42	
BJ0261	125.00	135.00	10.00	2.61	includes 1 m @ 17.30 g/t Au from 125m
BJ0342	63.00	65.00	2.00	0.47	
BJ0361	19.00	28.00	9.00	0.83	
BJ0361	52.00	54.00	2.00	0.48	
BJ0363	19.00	21.00	2.00	0.38	
BJ0363	22.00	41.00	19.00	0.86	
BJ0363	67.00	75.00	8.00	0.42	
BJ0363	83.00	88.00	5.00	0.62	
BJ0363	109.00	111.00	2.00	0.71	
BJ0370	90.00	102.00	12.00	1.30	
BJ0370	105.00	110.00	5.00	0.57	
BJ0370	117.00	119.00	2.00	0.69	
BJ0370	135.00	147.00	12.00	0.69	
BJ0370	155.00	164.00	9.00	0.72	
BJ0370	166.00	172.00	6.00	0.49	
BJ0371	30.00	42.00	12.00	0.72	
BJ0371	96.00	99.00	3.00	1.04	
BJ0371	136.00	138.00	2.00	2.00	
BJ0371	161.00	176.00	15.00	1.39	
BJ0371	195.00	204.00	9.00	13.32	includes 6 m @ 19.72 g/t Au from 195m
BJ0371	216.00	220.00	4.00	0.58	
BJ0381	21.00	35.00	14.00	2.41	includes 4 m @ 5.99 g/t Au from 28m

Hole	From	To	Width	Au g/t	Includes
BJ0381	55.00	57.00	2.00	0.87	
BJ0381	62.00	88.00	26.00	0.83	
BJ0381	96.00	111.00	15.00	0.70	
BJ0381	120.00	123.00	3.00	0.48	
BJ0381	126.00	132.00	6.00	1.51	
BJ0381	154.00	162.00	8.00	1.54	includes 1 m @ 8.92 g/t Au from 156m
BJ0384	68.00	92.00	24.00	0.56	
BJ0384	99.00	101.00	2.00	0.91	
BJ0384	111.00	113.00	2.00	0.46	
BJ0384	123.00	142.00	19.00	1.31	
BJ0384	161.00	173.00	12.00	0.95	
BJ0384	178.00	185.00	7.00	1.19	
BJ0398	28.00	30.00	2.00	1.54	
BJ0398	44.00	48.00	4.00	1.09	
BJ0398	52.00	54.00	2.00	0.46	
BJ0398	63.00	66.00	3.00	0.95	
BJ0398	80.00	86.00	6.00	0.47	
BJ0398	100.00	102.00	2.00	1.16	
BJ0398	120.00	129.00	9.00	1.32	
BJ0398	163.00	170.00	7.00	0.93	
BJ0398	178.00	181.00	3.00	1.01	
BJ0398	192.00	216.00	24.00	0.58	
BJ0402	0.00	2.00	2.00	0.63	
BJ0402	48.00	57.00	9.00	0.60	
BJ0402	65.00	70.00	5.00	0.50	
BJ0402	77.00	99.00	22.00	0.62	
BJ0402	111.00	114.00	3.00	1.56	
BJ0402	119.00	124.00	5.00	0.80	
BJ0404	23.00	27.00	4.00	2.06	
BJ0404	59.00	62.00	3.00	0.64	
BJ0404	76.00	82.00	6.00	1.38	
BJ0404	92.00	106.00	14.00	0.61	
BJ0404	125.00	139.00	14.00	0.66	
BJ0405	0.00	2.00	2.00	0.78	
BJ0405	21.00	41.00	20.00	3.45	includes 3 m @ 11.54 g/t Au from 27m
BJ0405	44.00	46.00	2.00	0.38	
BJ0405	53.00	55.00	2.00	0.62	
BJ0405	68.00	71.00	3.00	1.41	
BJ0405	89.00	92.00	3.00	0.53	
BJ0405	115.00	122.00	7.00	0.44	
BJ0405	133.00	145.00	12.00	1.77	includes 1 m @ 16.40 g/t Au from 143m
BJ0405	148.00	154.00	6.00	0.67	
BJ0405	160.00	162.00	2.00	0.32	
BJ0405	170.00	177.00	7.00	0.82	
BJ0405	181.00	183.00	2.00	0.38	

Hole	From	To	Width	Au g/t	Includes
BJ0405	185.00	187.00	2.00	0.34	
BJ0406	137.00	143.00	6.00	0.60	
BJ0406	159.00	170.00	11.00	0.51	
BJ0452	124.00	133.00	9.00	0.83	
BJ0452	161.00	163.00	2.00	0.62	
BJ0452	177.00	181.00	4.00	0.50	
BJ0452	187.00	189.00	2.00	0.34	
BJ0452	192.00	196.00	4.00	0.79	
BJ0461	18.00	21.00	3.00	0.56	
BJ0461	34.00	45.00	11.00	1.08	
BJ0461	47.00	49.00	2.00	0.32	
BJ0461	52.00	54.00	2.00	3.20	
BJ0461	65.00	99.00	34.00	0.59	
BJ0466	45.00	55.00	10.00	2.48	includes 5 m @ 4.13 g/t Au from 50m
BJ0466	100.00	113.00	13.00	0.73	
BJ0466	144.00	154.00	10.00	0.45	
BJ0466	172.00	176.00	4.00	0.60	
BJ0466	179.00	188.00	9.00	0.69	
BJ0467	59.00	62.00	3.00	0.68	
BJ0467	146.00	149.00	3.00	0.65	
BJ0467	163.00	171.00	8.00	0.71	
BJ0467	194.00	196.00	2.00	0.43	
BJ0467	203.00	206.00	3.00	1.50	
BJ0467	211.00	214.00	3.00	1.35	
BJ0473	29.00	36.00	7.00	1.01	
BJ0473	41.00	73.00	32.00	0.51	
BJ0523	65.00	67.00	2.00	1.81	
BJ0523	98.00	105.00	7.00	0.39	
BJ0523	147.00	150.00	3.00	1.11	
BJ0523	154.00	156.00	2.00	0.49	
BJ0527	44.00	55.00	11.00	0.44	
BJ0528	49.00	65.00	16.00	0.86	
BJ0541	125.00	129.00	4.00	0.88	
BJ0541	136.00	138.00	2.00	0.72	
BJ0541	144.00	148.00	4.00	1.63	
BJ0680	64.00	69.00	5.00	0.46	
BJ0716	153.00	155.00	2.00	0.77	
BJ0718	28.00	53.00	25.00	0.98	
BJ0718	79.00	85.00	6.00	1.43	
BJ0718	104.00	110.00	6.00	0.72	
BJ0718	117.00	119.00	2.00	1.05	
BJ1219	38.00	43.00	5.00	0.57	
BJ1219	46.00	49.00	3.00	0.55	
BJ1219	54.00	56.00	2.00	0.38	
BJ1219	62.00	64.00	2.00	1.92	

Hole	From	To	Width	Au g/t	Includes
BJ1219	86.00	88.00	2.00	0.41	
BJ1219	98.00	104.00	6.00	0.40	
BJ1219	159.00	165.00	6.00	0.70	
BJ1223	47.00	51.00	4.00	0.42	
BJ1223	67.00	73.00	6.00	0.80	
BJ1225	79.00	83.00	4.00	0.65	
BJ1225	94.00	98.00	4.00	0.50	
BJ1227	106.00	108.00	2.00	1.56	
BJ1253	13.00	23.00	10.00	1.11	
BJ1253	80.00	82.00	2.00	1.31	
BJ1254	20.00	30.00	10.00	0.75	
BJ1254	38.00	40.00	2.00	0.33	
BJ1254	41.00	44.00	3.00	0.76	
BJ1254	58.00	65.00	7.00	0.68	
BJ1254	105.00	107.00	2.00	0.55	
BJ1255	31.00	37.00	6.00	1.24	
BJ1255	42.00	48.00	6.00	0.75	
BJ1255	75.00	97.00	22.00	0.70	
BJ1256	75.00	77.00	2.00	0.92	
BJ1256	110.00	113.00	3.00	0.43	
BJ1256	120.00	128.00	8.00	0.91	
BJ1256	130.00	132.00	2.00	0.37	
BJ1257	92.00	105.00	13.00	3.45	includes 4 m @ 10.25 g/t Au from 92m
BJ1257	116.00	118.00	2.00	0.44	
BJ1257	135.00	139.00	4.00	1.17	
BJ1257	159.00	172.00	13.00	0.46	
BJ1295	39.00	44.00	5.00	1.39	
BJ1295	99.00	108.00	9.00	0.56	
BJ1295	116.00	121.00	5.00	1.69	
BJ1295	188.00	190.00	2.00	1.39	
BJ1295	209.00	212.00	3.00	0.53	
BJ1295	226.00	229.00	3.00	0.53	
BJ1297	63.00	79.00	16.00	1.75	includes 3 m @ 7.46 g/t Au from 69m
BJ1297	90.00	93.00	3.00	0.34	
BJ1297	116.00	122.00	6.00	0.48	
BJ1297	127.00	138.00	11.00	1.08	
BJ1297	182.000	183.000	1.000	48.800	
BJ1297	187.00	199.00	12.00	0.67	
BJ1303	43.00	45.00	2.00	0.37	
BJ1303	56.00	59.00	3.00	0.73	
BJ1303	73.00	78.00	5.00	0.57	
BJ1303	115.00	119.00	4.00	1.58	
BJ1303	144.00	147.00	3.00	0.44	
BJ1303	161.00	167.00	6.00	0.80	
BJ1303	172.00	176.00	4.00	2.21	includes 1 m @ 7.19 g/t Au from 175m

Hole	From	To	Width	Au g/t	Includes
BJ1303	198.00	200.00	2.00	0.73	
BJ1353	57.00	60.00	3.00	0.57	
BJ1353	94.00	97.00	3.00	0.57	
BJ1353	101.00	105.00	4.00	2.09	
BJ1353	107.00	109.00	2.00	0.33	
BJ1353	115.00	122.00	7.00	0.38	
BJ1353	162.00	164.00	2.00	0.92	
BJ1353	166.00	168.00	2.00	0.36	
BJ1353	170.00	172.00	2.00	0.71	
BJ1353	185.00	187.00	2.00	0.38	
BJ1353	192.00	209.00	17.00	0.58	
BJ1377	78.00	80.00	2.00	0.40	
BJ1377	92.00	95.00	3.00	0.63	
BJ1377	98.00	105.00	7.00	0.66	
BJ1377	138.00	140.00	2.00	0.66	
BJ1377	147.00	160.00	13.00	0.52	
BJ1380	102.00	104.00	2.00	0.75	
BJ1380	139.00	144.00	5.00	0.43	
BJ1380	148.00	173.00	25.00	0.63	
BJ1401	34.00	36.00	2.00	1.99	
BJ1401	47.00	51.00	4.00	0.53	
BJ1401	140.00	143.00	3.00	0.79	
BJ1401	188.00	191.00	3.00	0.89	
BJ1401	197.00	215.00	18.00	0.42	
BJ1585	45.00	50.00	5.00	0.67	
BJ1585	89.00	95.00	6.00	0.81	
BJ1585	113.00	116.00	3.00	0.58	
BJ1585	156.00	158.00	2.00	0.58	
BJ1585	164.00	166.00	2.00	0.38	
BJ1585	168.00	170.00	2.00	0.97	
BJ1585	186.00	188.00	2.00	0.50	
BJ1585	198.00	201.00	3.00	1.40	
BJ1921	27.00	30.00	3.00	0.52	
BJ1921	51.00	54.00	3.00	0.55	
BJ1921	62.00	64.00	2.00	0.57	
BJ1921	78.00	84.00	6.00	0.49	
BJ1921	94.00	106.00	12.00	1.55	
BJ1922	56.00	73.00	17.00	0.70	
BJ1922	82.00	84.00	2.00	0.57	
BJ1922	113.00	124.00	11.00	0.66	
BJ1922	136.00	142.00	6.00	0.78	
BJ1945	82.00	84.00	2.00	0.79	
BJ1945	92.00	94.00	2.00	0.55	
BJ1945	105.00	107.00	2.00	0.86	
BJ1945	113.00	122.00	9.00	3.52	includes 1 m @ 28.50 g/t Au from 119m

Hole	From	To	Width	Au g/t	Includes
BJ1945	161.00	163.00	2.00	0.49	
BJ1945	171.00	174.00	3.00	1.75	
BJ1947	58.00	61.00	3.00	0.42	
BJ1947	116.00	118.00	2.00	0.58	
BJ1947	136.00	139.00	3.00	1.29	
BJ1947	149.00	157.00	8.00	0.72	
BJ1957	96.00	100.00	4.00	0.72	includes 1 m @ 12.50 g/t Au from 99m
BJ1957	105.00	113.00	8.00	0.47	
BJ1957	160.00	171.00	11.00	0.45	
BJ1993	44.00	54.00	10.00	0.73	
BJ1993	77.00	79.00	2.00	0.92	
BJ1996	35.00	49.00	14.00	1.45	includes 1 m @ 8.32 g/t Au from 43m
BJ1996	60.00	68.00	8.00	0.47	
BJ1996	93.00	100.00	7.00	0.43	
BJ1996	115.00	121.00	6.00	1.88	includes 1 m @ 7.65 g/t Au from 115m
BJ1996	126.00	138.00	12.00	1.17	
BJ2010	42.00	45.00	3.00	0.65	
BJ2010	52.00	55.00	3.00	0.64	
BJ2010	72.00	74.00	2.00	0.81	
BJ2010	93.00	98.00	5.00	1.21	
BJ2010	117.00	123.00	6.00	0.87	
BJ2012	28.00	42.00	14.00	0.50	
BJ2012	61.000	62.000	1.000	12.500	
BJ2012	101.00	111.00	10.00	0.42	
BJ2012	157.00	164.00	7.00	0.65	
BJ2020	85.00	91.00	6.00	0.47	
BJ2020	103.00	106.00	3.00	2.13	
BJ2020	159.00	163.00	4.00	0.43	
BJ2020	167.00	172.00	5.00	0.38	
BJ2020	184.00	186.00	2.00	0.42	
BJ2020	197.00	199.00	2.00	0.49	
BJ2020	211.00	213.00	2.00	1.83	
BJ2029	13.00	22.00	9.00	0.80	
BJ2029	27.00	33.00	6.00	0.71	
BJ2029	35.00	37.00	2.00	0.38	
BJ2029	50.00	53.00	3.00	0.39	
BJ2029	57.00	72.00	15.00	0.43	
BJ2029	76.00	78.00	2.00	0.46	
BJ2029	116.00	137.00	21.00	0.63	
BJ2031	38.00	40.00	2.00	0.47	
BJ2031	46.00	67.00	21.00	0.54	
BJ2031	73.00	77.00	4.00	1.82	
BJ2031	86.00	93.00	7.00	0.54	
BJ2031	98.00	112.00	14.00	0.44	
BJ2031	167.00	171.00	4.00	0.63	

Hole	From	To	Width	Au g/t	Includes
BJ2040	0.00	2.00	2.00	0.41	
BJ2040	46.00	48.00	2.00	0.59	
BJ2040	85.00	93.00	8.00	0.72	
BJ2040	97.00	103.00	6.00	1.03	
BJ2040	126.00	131.00	5.00	1.39	
BJ2040	171.00	173.00	2.00	0.46	
BJ2040	175.00	179.00	4.00	0.74	
BJ2040	197.00	199.00	2.00	0.46	
BJ2051	56.00	62.00	6.00	0.52	
BJ2051	71.00	73.00	2.00	0.48	
BJ2051	93.00	96.00	3.00	1.34	
BJ2051	114.00	117.00	3.00	0.54	
BJ2051	129.00	133.00	4.00	1.15	
BJ2051	175.00	178.00	3.00	2.15	
BJ2053	79.00	81.00	2.00	0.52	
BJ2053	88.00	98.00	10.00	0.62	
BJ2053	157.00	161.00	4.00	2.68	
BJ2065	90.00	93.00	3.00	0.35	
BJ2065	154.00	159.00	5.00	1.00	
BJ2065	194.00	197.00	3.00	0.92	
BJ2065	206.00	210.00	4.00	0.54	
BJ2066	45.00	55.00	10.00	0.54	
BJ2066	65.00	79.00	14.00	2.40	includes 1 m @ 10.65 g/t Au from 78m and 2 m @ 9.38 g/t Au from 73m
BJ2066	116.00	120.00	4.00	0.58	
BJ2066	127.00	143.00	16.00	0.82	
BJ2066	184.00	188.00	4.00	0.63	
BJ2070	146.00	164.00	18.00	1.60	includes 2 m @ 8.76 g/t Au from 146m
BJ2070	171.00	173.00	2.00	0.74	
BJ2070	181.00	184.00	3.00	0.53	
BJ2070	186.00	188.00	2.00	0.32	
BJ2070	189.00	192.00	3.00	1.23	
BJ2070	229.00	231.00	2.00	0.47	
BJ2070	237.00	248.00	11.00	1.19	
BJ2083	35.00	47.00	12.00	0.81	
BJ2083	66.00	68.00	2.00	0.47	
BJ2083	71.00	78.00	7.00	1.11	
BJ2083	83.00	86.00	3.00	0.61	
BJ2083	130.00	144.00	14.00	2.51	includes 2 m @ 10.68 g/t Au from 141m
BJ2083	149.00	152.00	3.00	0.37	
BJ2083	155.00	162.00	7.00	0.48	
BJ2083	165.00	171.00	6.00	1.48	includes 1 m @ 7.33 g/t Au from 170m
BJ2085	47.00	49.00	2.00	0.40	
BJ2085	55.00	57.00	2.00	5.01	includes 1 m @ 9.39 g/t Au from 56m
BJ2085	79.00	84.00	5.00	0.76	

Hole	From	To	Width	Au g/t	Includes
BJ2085	93.00	96.00	3.00	0.89	
BJ2085	110.00	113.00	3.00	0.89	
BJ2085	121.00	123.00	2.00	0.67	
BJ2085	196.00	198.00	2.00	0.72	
BJ2095	33.00	39.00	6.00	0.39	
BJ2095	46.00	50.00	4.00	0.38	
BJ2095	55.00	58.00	3.00	0.81	
BJ2095	69.00	73.00	4.00	2.62	
BJ2096	37.00	48.00	11.00	0.87	
BJ2096	51.00	55.00	4.00	0.44	
BJ2096	60.00	64.00	4.00	0.53	
BJ2096	86.00	93.00	7.00	1.53	
BJ2106	42.00	59.00	17.00	1.15	
BJ2106	106.00	118.00	12.00	0.54	
BJ2106	122.00	124.00	2.00	0.39	
BJ2106	127.00	131.00	4.00	0.80	
BJ2106	139.00	142.00	3.00	1.58	
BJ2106	149.00	151.00	2.00	1.73	
BJ2140	94.00	97.00	3.00	0.84	
BJ2140	157.00	159.00	2.00	0.46	
BJ2145	57.00	60.00	3.00	1.24	
BJ2145	127.00	129.00	2.00	0.48	
BJ2145	183.00	186.00	3.00	1.40	
BJ2151	100.00	106.00	6.00	0.72	
BJ2151	114.00	118.00	4.00	0.62	
BJ2151	175.00	195.00	20.00	0.77	
BJ2151	203.00	212.00	9.00	0.73	
BJ2160	82.00	84.00	2.00	3.48	
BJ2162	95.00	104.00	9.00	1.06	
BJ2162	150.00	156.00	6.00	0.74	
BJ2162	176.00	180.00	4.00	0.99	
BJ2162	193.00	202.00	9.00	0.62	
BJ2162	210.00	213.00	3.00	0.70	
BJ2188	169.00	174.00	5.00	0.68	
BJ2188	179.00	199.00	20.00	0.52	
BJ2188	209.00	220.00	11.00	0.85	
BJ2188	250.00	252.00	2.00	0.52	
BJ2337	61.00	69.00	8.00	0.87	
BJ2337	126.00	133.00	7.00	2.04	
BJ2338	76.00	78.00	2.00	3.99	
BJ2338	116.00	122.00	6.00	0.38	
BJ2338	124.00	126.00	2.00	0.42	
BJ2338	148.00	151.00	3.00	0.72	
BJ2344	39.00	46.00	7.00	0.86	
BJ2344	58.00	76.00	18.00	0.56	

Hole	From	To	Width	Au g/t	Includes
BJ2344	81.00	93.00	12.00	0.90	
BJM009	37.00	39.00	2.00	0.54	
BJM009	70.00	73.00	3.00	0.61	
BJM009	82.00	87.00	5.00	0.85	
BJM013	37.00	45.00	8.00	0.64	
BJM022	38.00	42.00	4.00	0.40	
BJM022	45.00	47.00	2.00	0.33	
BJM024	8.00	10.00	2.00	0.85	
BJM024	19.00	38.00	19.00	2.48	includes 4 m @ 8.04 g/t Au from 24m
BJM029	26.00	30.00	4.00	0.46	
BJM029	36.00	40.00	4.00	0.65	
BJM031	0.00	2.00	2.00	0.41	
BJM032	1.00	3.00	2.00	0.75	