

BEST RESULTS YET AT MAJESTIC – 49 METRES AT 7.89 G/T GOLD INCLUDING 11 METRES AT 23 G/T GOLD

NEW INTERCEPTS NORTH OF EXISTING RESOURCE AND OPEN PIT DESIGN

Integra Mining Limited (“Integra”; **ASX: IGR**) is very pleased to report new RC and diamond drill intercepts from the Majestic gold deposit. New intercepts include:

Within a broader gold anomalous envelope of **89 metres at 4.55 g/t gold**:

- **49 metres at 7.89 g/t gold from 63 metres depth, including**
 - ❖ **11 metres at 23 g/t gold**

and on an adjacent section to the north within a broader gold anomalous envelope of **105 metres at 1.42 g/t gold**:

- **48 metres at 2.70 g/t gold from 68 metres depth.**

Other significant intercepts include:

- **10 metres at 3.10 g/t gold**
- **5 metres at 4.51 g/t gold, and,**
- **4 metres at 4.86 g/t gold**

These intercepts are from two adjacent 20 metre spaced sections drilled at and beyond the northern extent of the previously announced Inferred Resource of 260,000 ounces at the Majestic gold deposit (see ASX release 25 January 2011).

Drill hole collars on the sections are widely spaced at 40 metres apart and drill holes up-dip and down-dip display less coherent gold mineralisation. Further infill drilling on section and further along strike to the north is required to properly define the extents of these high-grade zones, however, it is interpreted that they are continuous across sections and represent shallowly plunging ‘shoots’ of high-grade gold mineralisation. As these zones now extend the known mineralisation further north of the current Mineral Resource limits, it is expected that the resource will be extended as will the preliminary open pit design (see Figures 2-5).

Integra Managing Director, Chris Cairns said “It is unusual in the modern gold mining environment, when most miners are pursuing gold at greater depths underground, that Integra continues to discover this quality and grade of mineralisation near surface and with all likelihood of being mined in an open pit.”

Yours sincerely,



Chris Cairns
Managing Director



Information in this announcement that relates to Exploration Results and Mineral Resources is based on information compiled by Chris Cairns, Managing Director, who has sufficient experience which is relevant to the style of mineralisation and type of deposit under consideration and to the activity which he is undertaking to qualify as a Competent Person as defined in the 2004 Edition of the "Australasian Code for Reporting of Exploration Results, Mineral Resources and Ore Reserves". Chris Cairns is a member of The Australasian Institute of Geoscientists and consents to the inclusion in the report of the matters based on the information in the form and context in which it appears.

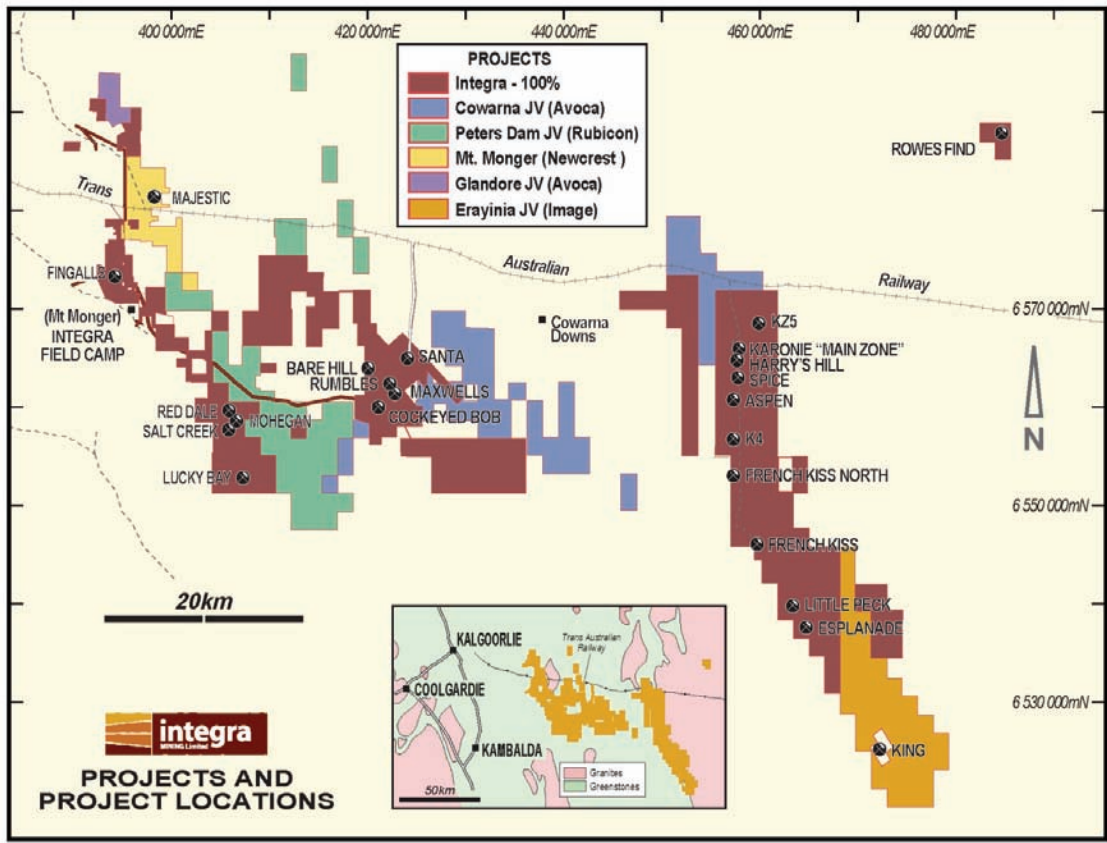


Figure 1 – Integra Tenement Location Plan.

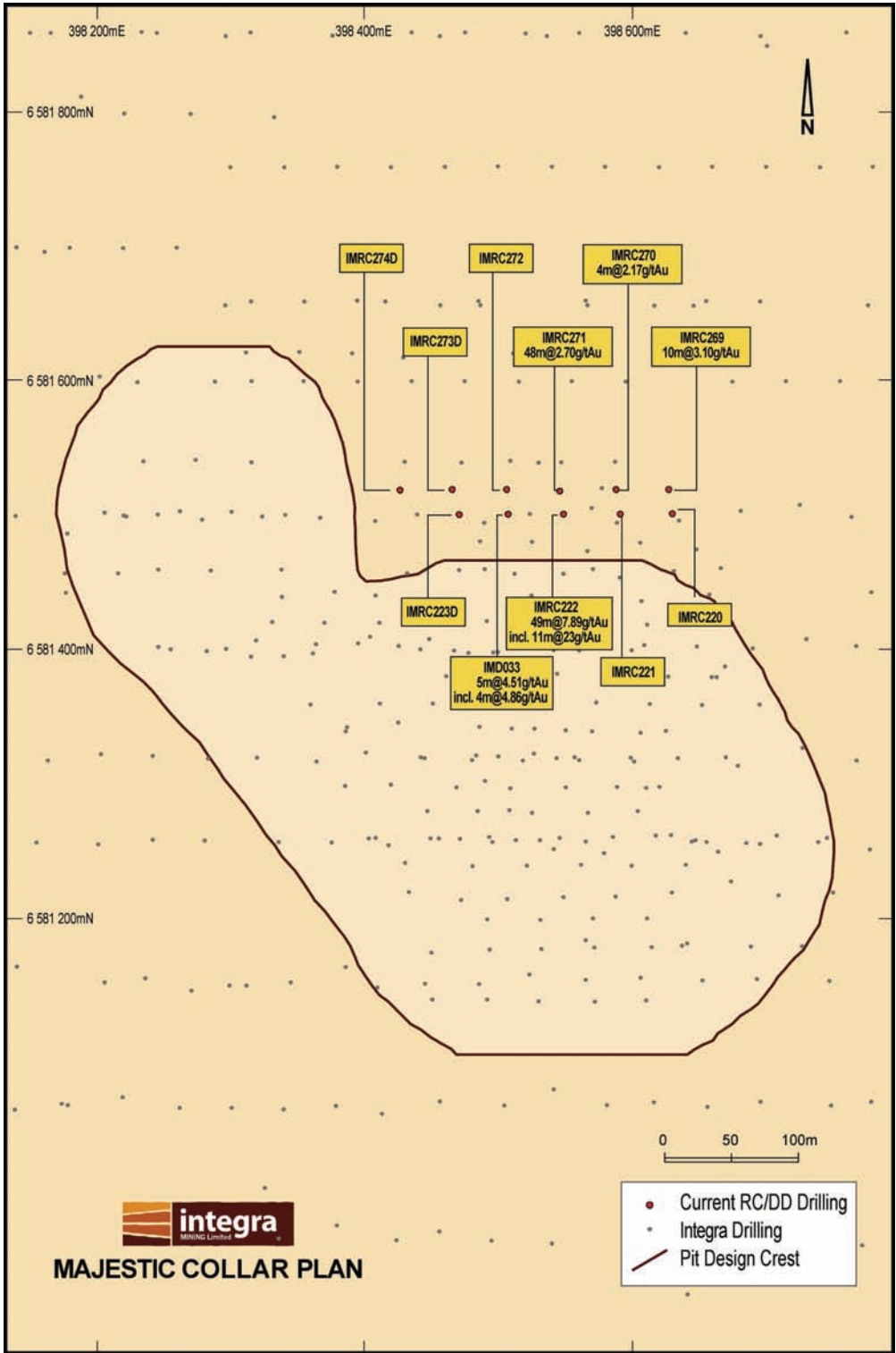


Figure 2 – Collar location plan showing preliminary open pit crest

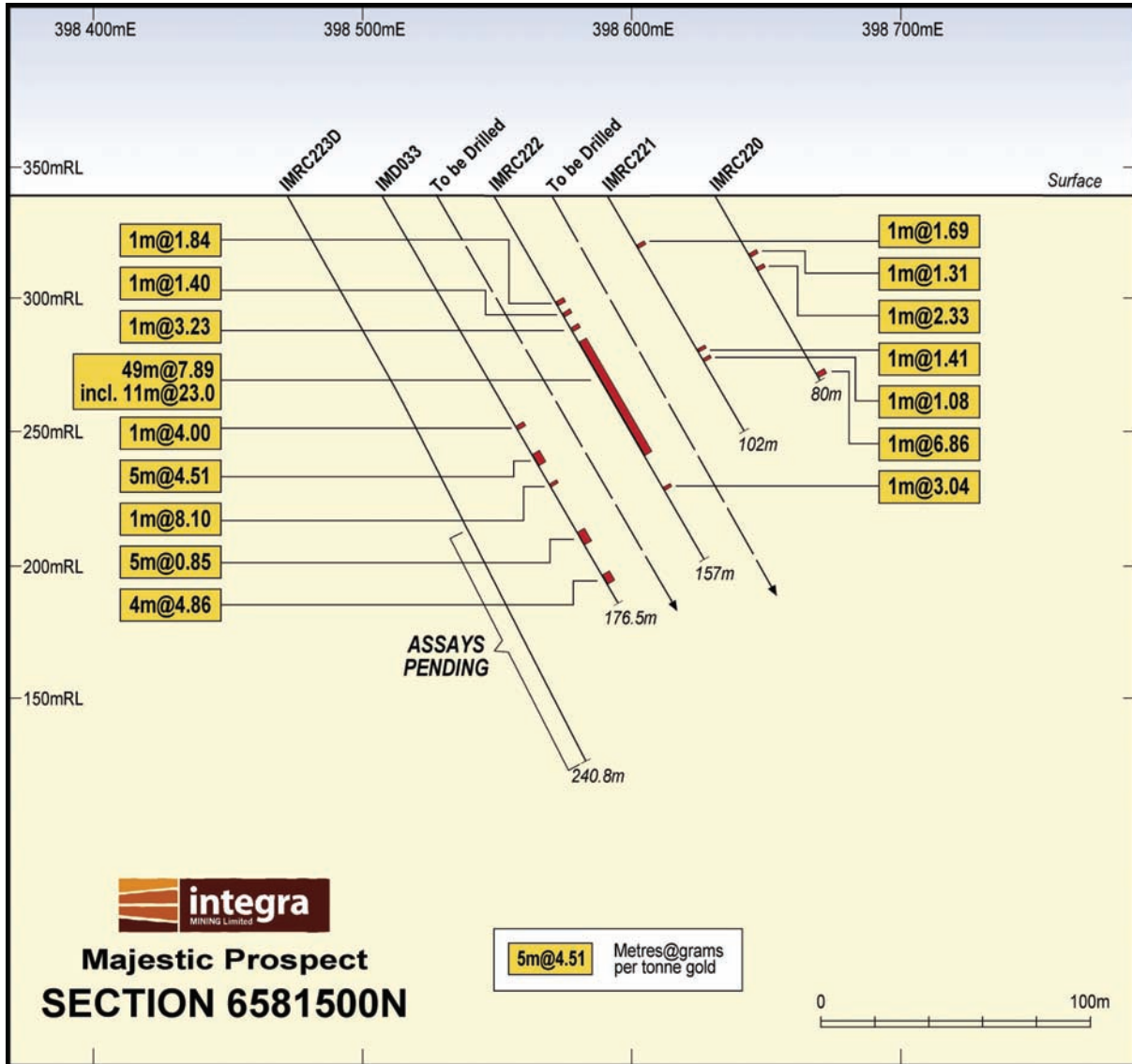


Figure 3 – Section 6581500mN

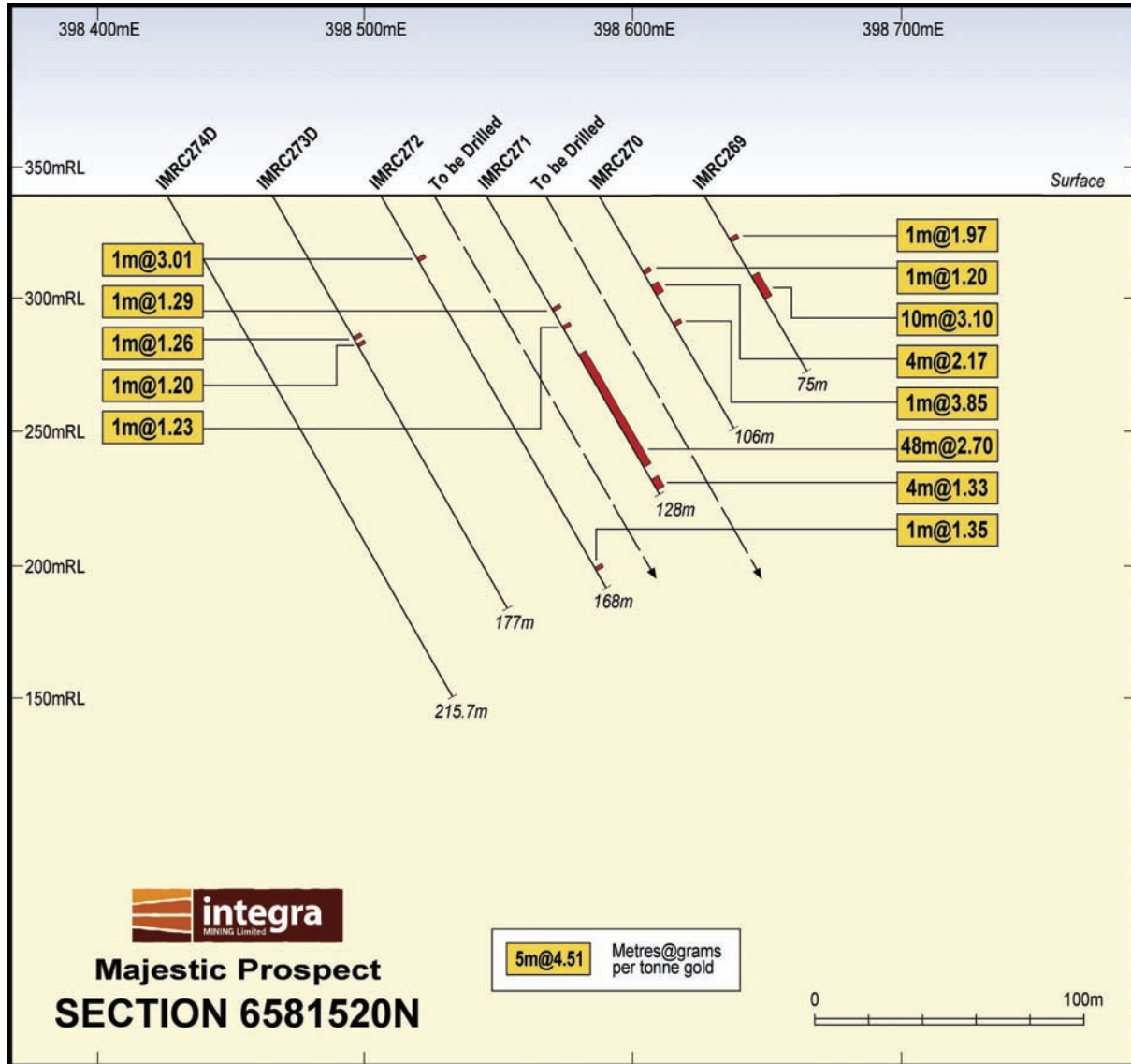


Figure 4 – Section 6581520mN

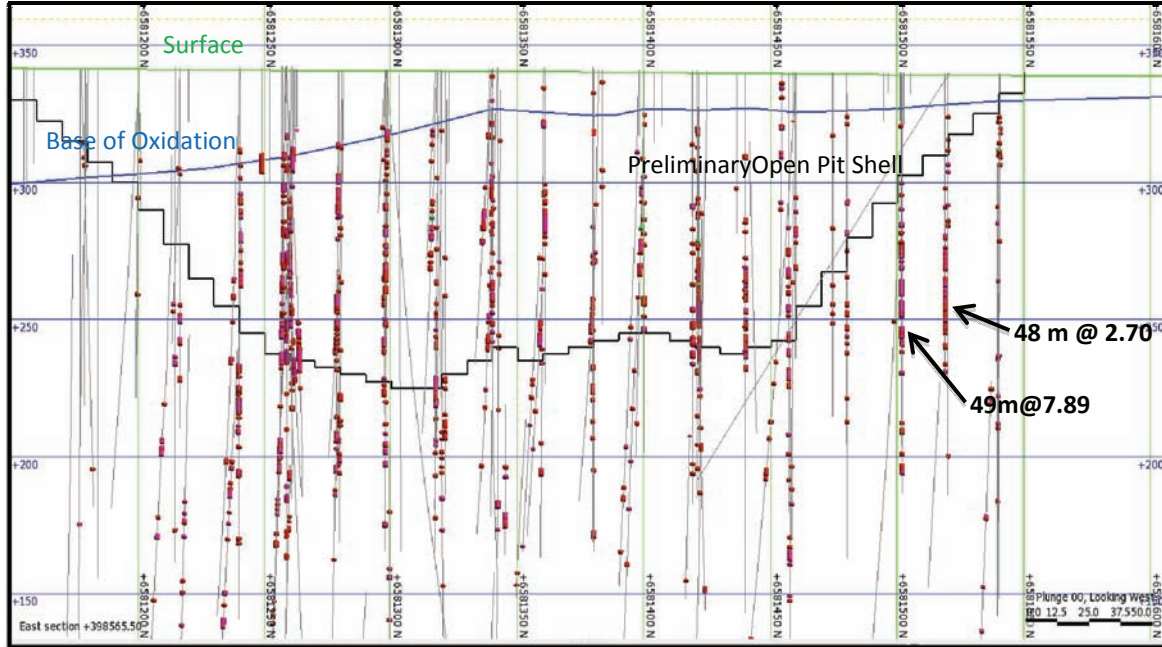


Figure 5 – Majestic long section showing drill hole traces (red balls +1g/t, magenta balls +3g/t), surface, base of oxidation, preliminary open pit design shell and location of recent high-grade gold intercepts.

Table 1. Selected drill intercepts +1g/t

Hole_ID	Easting	Northing	Dip	Azimuth	From (m)	To (m)	Interval (m)	Gold (g/t)
IMD033	398507	6581502	-60	090	100	101	1	4.00
					112	117	5	4.51
					125	126	1	8.10
					146	151	5	0.85
					159	160	1	1.61
					164	168	4	4.86
IMRC220	398629	6581503	-60	090	26	27	1	1.31
					32	33	1	2.33
					77	78	1	6.46
IMRC221	398590	6581501	-60	090	22	23	1	1.69
					67	68	1	1.41
					71	72	1	1.08
IMRC222	398548	6581502	-60	090	46	47	1	1.84
					51	52	1	1.40
					57	58	1	3.23
					63	112	49	7.89
					incl.	81	92	11
	126	127	1	3.04				
IMRC223D	398470	6581500	-60	090	102	103	1	2.90
IMRC269	398627	6581520	-60	090	18	19	1	1.97
					34	44	10	3.10
IMRC270	398588	6581520	-60	090	32	33	1	1.20
					38	42	4	2.17
					55	56	1	3.85
IMRC271	398546	6581519	-60	090	48	49	1	1.29
					56	57	1	1.23
					68	116	48	2.70
IMRC272	398506	6581520	-60	090	27	28	1	3.01
					160	161	1	1.35
IMRC273D	398465	6581520	-60	090	61	62	1	1.26
					63	64	1	1.20
IMRC274D	398425	6581520	-60	090	26	27	1	1.29
					33	34	1	1.25