



7 September 2011

Kentor Gold (ASX: KGL) is an Australian-based, emerging mid-tier gold company with advanced projects in Australia and the Kyrgyz Republic.

*Formed in 1998 and listed on the ASX in 2005, the Company expects to commence high grade gold production at **Burnakura** in Western Australia in mid-2012, with potential additional gold-copper production from the neighbouring **Gabanintha** deposit.*

*At **Jervois** in the Northern Territory, the Company is studying the feasibility of developing a large, high grade copper-silver resource with potential for the production of gold and other base metals.*

*In the Kyrgyz Republic, Kentor Gold is ready to proceed with the development of the Company's 80% owned high grade, very low cost **Andash** Gold-Copper Project once site access has been obtained. **Andash** is targeted to produce 70,000 oz gold and 7,400 tonnes copper pa for an initial six years, with high potential for expansion.*

Issued capital:

1,062.1 million ordinary shares
63.6 million unlisted options

Market Capitalisation

6 September 2011: \$103 million

Outstanding drilling results confirms Jervois as a significant project.

- **Potential for major mine at Jervois reinforced**
- **72 metres down hole intersection @ 3.27% copper, 51.33 g/t silver and 1.16 g/t gold.**
- **Results confirm mineralisation at Reward Prospect open at a depth of 450m below surface and to the north along strike.**
- **Adds to 2011 confirmation of significant mineralisation under the existing Jervois resource.**

Kentor Gold Limited is pleased to announce that assay results from diamond drilling continue to indicate high grade mineralisation below the Reward Prospect at Jervois in the Northern Territory.

The best result from the latest drilling is 72m @ 3.27% copper, 51.33g/t silver and 1.16g/t gold from 414m, down hole. Due to the steep angle of the hole the estimated horizontal true width of this high grade interval is 16m. Assays up to 8.8% copper, 276 g/t silver and 19g/t gold were recorded from individual samples within the hole.

Announcing the results, Kentor Gold Managing Director Simon Milroy said:

“These results reinforce the potential of Jervois to be a major mine.

“The latest assays include the highest grade and thickest intersection from the project to date.

“All known areas of mineralisation are open at depth and the deepest intersections have also been the highest grade.

“The Reward deposit has now been intersected at 450m below surface and is showing signs of strengthening.”



Diamond drill hole locations are presented in Figures 1 and 2 and significant assay results are tabulated in Appendix 1. Appendix 2 contains a list of all assay results received to date for Hole RJ169.

Results from diamond drilling under the Reward Prospect confirm that mineralisation continues well beyond the current resource estimate depth of 200m.

The Reward Prospect accounts for approximately half of the initial Inferred Resource for Jervois of 8.8 million tonnes @ 1.3% copper and 26.7 g/t silver for a total of 113,000 tonnes of copper and 7.6 million ounces of silver.

The diamond drill rig has now completed the final hole at Bellbird North Prospect, approximately 5 km south-west of Reward and the drilling crew is expected to demobilise today.

An updated resource estimate will be prepared as soon as the assay results are available.

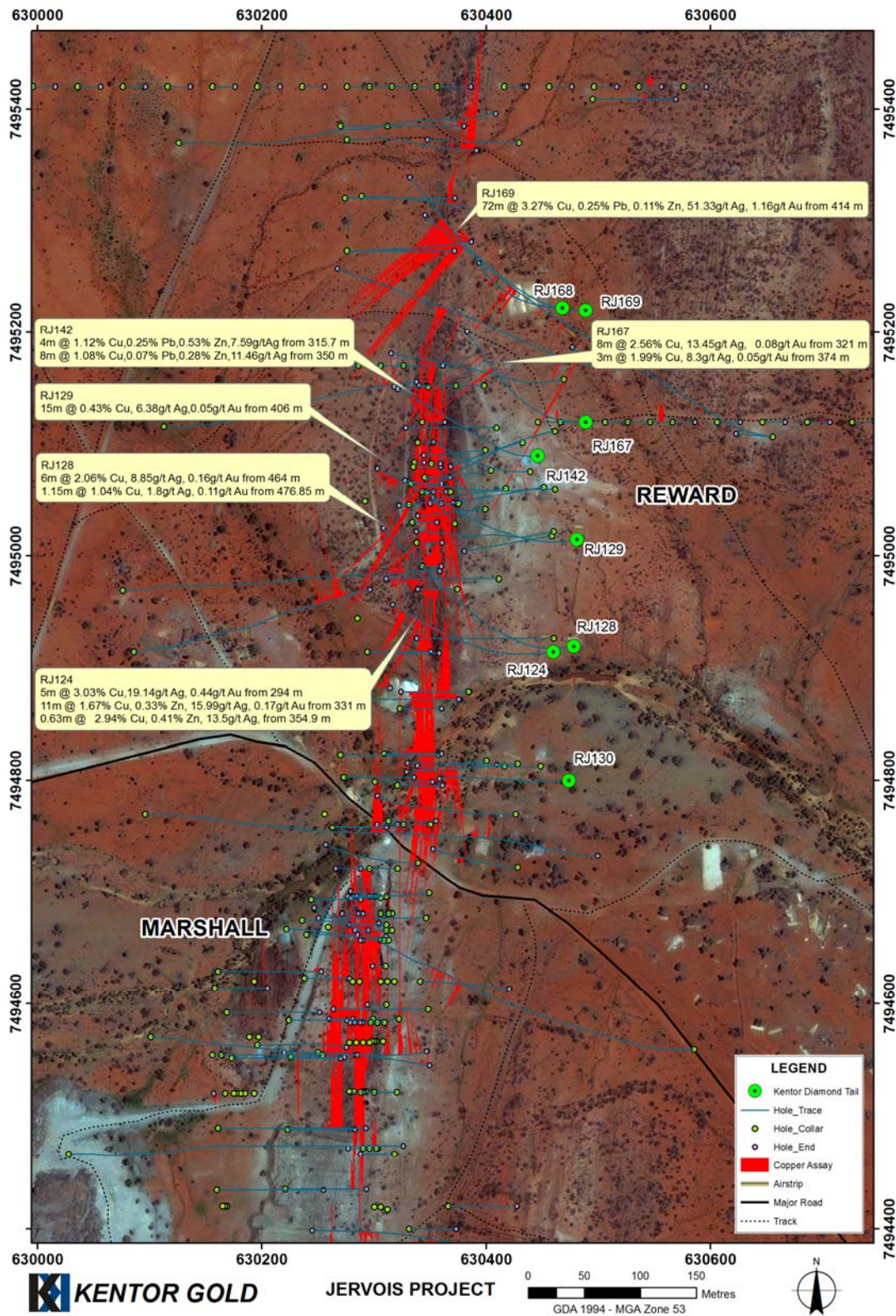
For further information contact:

Mr Simon Milroy
Managing Director
Phone: (07) 3121 3206
Email: info@kentorgold.com.au

Mr. David Waterhouse
Investor Relations
Phone (03) 9670 5008
Email: dwaterhouse@waterhouseir.com.au



Figure 1. Plan of drilling results at Marshall – Reward showing Copper assays



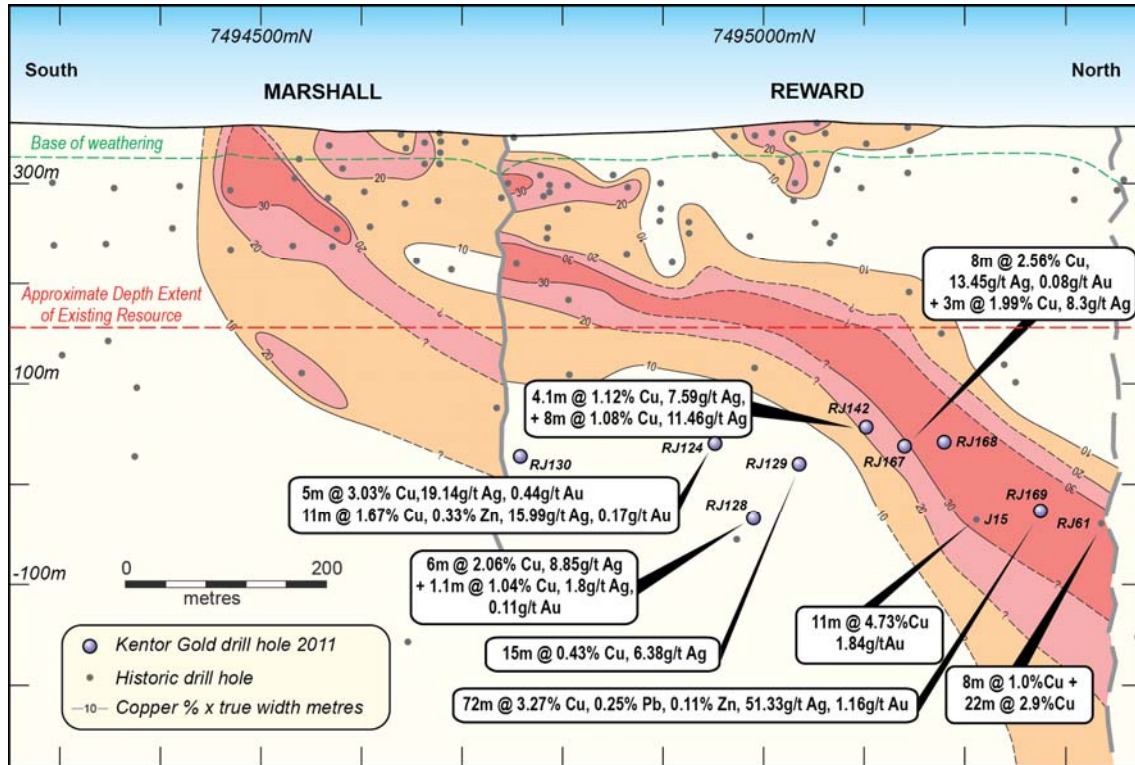


Figure 2. Long Section through Marshall - Reward

Competent Person Statement

The data in this report is based on information compiled by Rudy Lennartz, who is a member of the Australian Institute of Mining and Metallurgy and a full time employee of Jinka Minerals Ltd.

Mr. Lennartz has sufficient experience which is relevant to the style of the mineralisation and the type of deposit under consideration and to the activity to which he is undertaking, to qualify as a Competent Person as defined in the 2004 Edition of the Australasian Code for Reporting of Exploration Results, Mineral Resources and Ore Reserves. Mr. Lennartz has consented to the inclusion of this information in the form and context in which it appears in this report.



Appendix 1. Table of Significant Drilling Results

Hole	From	To	Interval m	EHTW* m	Cu %	Pb %	Zn %	Ag g/t	Au g/t
RJ124	294	297	3	1.5	0.66	0.02	0.06	5.63	0.14
	297	302	5	2.5	3.03	0.05	0.07	19.14	0.44
	302	306	4	2	0.46	0.04	0.06	7.13	0.14
	310	316.13	6.13	3.1	0.51	0.02	0.03	2.44	0.08
	317.58	320	2.42	2.2	0.91	0.04	0.05	8.47	0.05
	330	331	1	0.5	0.36	0.01	0.06	2.4	0.02
	331	342	11	5.5	1.67	0.08	0.33	15.99	0.17
	342	344	2	1	0.54	0.03	0.09	4.7	0.06
	354.9	355.53	0.63	0.3	2.94	0.04	0.41	13.5	0.01
	356	357	1	0.5	0.42	0.79	1.34	11.1	
RJ129	368	371	3	1.5	0.54	0.29	0.22	24.93	0.07
	376	379	3	1.5	0.76	0.15	0.31	2.97	0.02
	383	384	1	0.5	0.34	0.01	0.06	1.4	0.01
	406	421	15	7.2	0.43	0.05	0.1	6.38	0.05
	423	425	2	1	0.24	0.01	0.02	1.45	0.04
	427.95	430	2.05	1	0.63	0.01	0.02	4.78	0.05
	436	437	1	0.5	0.58	0.01	0.17	3.2	0.02
	439	441	2	1	0.19		0.03	0.9	0.01
RJ169	414	486	72	16	3.27	0.25	0.11	51.33	1.16
	486	489	3	0.7	0.51	0.03	0.11	7.2	0.05

*Estimated Horizontal true width



Appendix 2. Table of all results for Diamond Tail of RJ169

Hole	Sample No.	From	To	Length	Cu %	Pb %	Zn %	Ag g/t	Au g/t
RJ169	RJ169-72486	390.00	390.50	0.50	0.09%	0.08%	0.04%	3.3	0.001
RJ169	RJ169-72487	390.50	391.00	0.50	0.05%	0.04%	0.03%	1.2	0.001
RJ169	RJ169-72488	391.00	391.40	0.40	0.01%	0.01%	0.03%	0	0.001
RJ169	RJ169-72489	391.40	391.90	0.50	0.02%	0.02%	0.04%	0	0.001
RJ169	RJ169-72490	391.90	392.40	0.50	0.01%	0.01%	0.04%	0	0.001
RJ169	RJ169-72491	392.40	392.90	0.50	0.00%	0.01%	0.04%	0.7	0.001
RJ169	RJ169-72492	392.90	393.40	0.50	0.00%	0.01%	0.03%	0	0
RJ169	RJ169-72493	393.40	393.90	0.50	0.00%	0.01%	0.03%	0.6	0.001
RJ169	RJ169-72494	393.90	394.40	0.50	0.00%	0.01%	0.04%	0	0.001
RJ169	RJ169-72495	394.40	394.90	0.50	0.01%	0.01%	0.02%	0	0.002
RJ169	RJ169-72496	394.90	395.40	0.50	0.00%	0.01%	0.01%	0	0.001
RJ169	RJ169-72497	401.00	401.45	0.45	0.00%	0.01%	0.01%	0	0
RJ169	RJ169-72498	401.45	402.00	0.55	0.00%	0.00%	0.02%	0	0
RJ169	RJ169-72499	402.00	402.50	0.50	0.00%	0.01%	0.01%	0	0.001
RJ169	RJ169-72500	402.50	402.75	0.25	0.00%	0.00%	0.01%	0	0
RJ169	RJ169-72501	402.75	403.20	0.45	0.01%	0.00%	0.01%	0	0.001
RJ169	RJ169-72502	403.20	404.00	0.80	0.01%	0.00%	0.01%	0	0.003
RJ169	RJ169-72503	404.00	405.00	1.00	0.05%	0.00%	0.01%	0	0.014
RJ169	RJ169-72504	405.00	406.00	1.00	0.00%	0.00%	0.01%	0	0.001
RJ169	RJ169-72505	406.00	406.45	0.45	0.10%	0.00%	0.01%	0	0.025
RJ169	RJ169-72506	406.45	407.00	0.55	0.02%	0.01%	0.01%	0	0.003
RJ169	RJ169-72507	407.00	408.00	1.00	0.07%	0.00%	0.01%	0	0.007
RJ169	RJ169-72508	408.00	409.00	1.00	0.00%	0.01%	0.01%	0.5	0.001
RJ169	RJ169-72509	409.00	410.00	1.00	0.00%	0.01%	0.01%	0	0
RJ169	RJ169-72510	410.00	411.00	1.00	0.01%	0.01%	0.01%	0	0.001
RJ169	RJ169-72511	411.00	412.00	1.00	0.01%	0.01%	0.03%	0	0.002
RJ169	RJ169-72512	412.00	413.00	1.00	0.01%	0.01%	0.04%	0	0.002
RJ169	RJ169-72513	413.00	414.00	1.00	0.03%	0.01%	0.03%	0	0.007
RJ169	RJ169-72514	414.00	415.00	1.00	1.45%	0.70%	0.14%	96.2	0.299
RJ169	RJ169-72515	415.00	416.00	1.00	1.28%	0.51%	0.16%	68.6	0.366
RJ169	RJ169-72516	416.00	417.00	1.00	0.93%	0.13%	0.12%	19.5	0.186
RJ169	RJ169-72517	417.00	418.00	1.00	0.70%	0.10%	0.08%	15.3	0.162
RJ169	RJ169-72518	418.00	419.00	1.00	0.99%	0.18%	0.24%	32.6	0.15
RJ169	RJ169-72519	419.00	420.00	1.00	1.46%	0.15%	0.14%	27.5	0.409
RJ169	RJ169-72520	420.00	421.00	1.00	1.85%	0.16%	0.60%	35.1	0.025
RJ169	RJ169-72521	421.00	422.00	1.00	1.01%	0.05%	0.08%	9.7	0.457
RJ169	RJ169-72522	422.00	423.00	1.00	1.66%	0.05%	0.06%	11.1	0.215
RJ169	RJ169-72523	423.00	424.00	1.00	1.82%	0.05%	0.09%	10.1	0.409
RJ169	RJ169-72524	424.00	425.00	1.00	1.53%	0.02%	0.04%	5	0.403
RJ169	RJ169-72525	425.00	426.00	1.00	2.52%	0.06%	0.04%	20.4	1.05
RJ169	RJ169-72526	426.00	427.00	1.00	2.79%	0.04%	0.08%	15	1.23
RJ169	RJ169-72527	427.00	428.00	1.00	1.74%	0.02%	0.16%	7.1	0.126
RJ169	RJ169-72528	428.00	429.00	1.00	1.94%	0.02%	0.05%	10.7	0.339



Hole	Sample No.	From	To	Length	Cu %	Pb %	Zn %	Ag g/t	Au g/t
RJ169	RJ169-72529	429.00	430.00	1.00	2.62%	0.03%	0.02%	15.6	0.9
RJ169	RJ169-72530	430.00	431.00	1.00	2.52%	0.03%	0.02%	17.3	0.167
RJ169	RJ169-72531	431.00	432.00	1.00	3.00%	0.02%	0.02%	12.1	0.294
RJ169	RJ169-72532	432.00	433.00	1.00	4.93%	0.07%	0.02%	34.4	0.241
RJ169	RJ169-72533	433.00	434.00	1.00	6.39%	0.08%	0.06%	34.8	1.63
RJ169	RJ169-72534	434.00	435.00	1.00	4.13%	0.07%	0.04%	25.9	0.413
RJ169	RJ169-72535	435.00	436.00	1.00	5.40%	0.16%	0.19%	59.7	1.57
RJ169	RJ169-72536	436.00	437.00	1.00	6.70%	0.11%	0.22%	52.7	0.574
RJ169	RJ169-72537	437.00	438.00	1.00	7.73%	0.19%	0.11%	66.3	0.778
RJ169	RJ169-72538	438.00	439.00	1.00	2.32%	0.16%	0.04%	41.7	1.57
RJ169	RJ169-72539	439.00	440.00	1.00	3.44%	0.46%	0.17%	118	0.048
RJ169	RJ169-72540	440.00	441.00	1.00	4.85%	0.38%	0.12%	90.9	2.51
RJ169	RJ169-72541	441.00	442.00	1.00	4.89%	0.07%	0.10%	32.5	0.574
RJ169	RJ169-72542	442.00	443.00	1.00	4.56%	0.13%	0.08%	65	0.364
RJ169	RJ169-72543	443.00	444.00	1.00	3.77%	0.03%	0.07%	25	0.244
RJ169	RJ169-72544	444.00	445.00	1.00	2.45%	0.04%	0.04%	15.6	0.229
RJ169	RJ169-72545	445.00	446.00	1.00	2.09%	0.27%	0.04%	44.9	0.34
RJ169	RJ169-72546	446.00	447.00	1.00	3.60%	1.35%	0.05%	235	0.104
RJ169	RJ169-72547	447.00	448.00	1.00	6.82%	1.08%	0.06%	237	2.97
RJ169	RJ169-72548	448.00	449.00	1.00	2.11%	1.06%	0.08%	165	2.22
RJ169	RJ169-72549	449.00	450.00	1.00	5.18%	0.54%	0.08%	112	0.201
RJ169	RJ169-72550	450.00	451.00	1.00	2.44%	1.47%	0.05%	164	2.34
RJ169	RJ169-72551	451.00	452.00	1.00	5.98%	1.60%	0.09%	276	2.1
RJ169	RJ169-72552	452.00	453.00	1.00	3.74%	0.76%	0.06%	157	1.97
RJ169	RJ169-72553	453.00	454.00	1.00	5.86%	0.66%	0.25%	145	5.46
RJ169	RJ169-72554	454.00	455.00	1.00	2.91%	0.21%	0.14%	47.9	4.85
RJ169	RJ169-72555	455.00	456.00	1.00	4.70%	0.14%	0.18%	35.5	2.48
RJ169	RJ169-72556	456.00	456.60	0.60	3.40%	0.08%	0.07%	28.4	5.09
RJ169	RJ169-72557	456.60	457.60	1.00	0.68%	0.14%	0.02%	14.3	1.65
RJ169	RJ169-72558	457.60	458.60	1.00	0.53%	0.28%	0.02%	10.8	0.556
RJ169	RJ169-72559	458.60	459.80	1.20	1.41%	0.62%	0.01%	52.9	5.15
RJ169	RJ169-72560	459.80	460.00	0.20	5.75%	0.58%	0.08%	138	19
RJ169	RJ169-72561	460.00	461.00	1.00	6.75%	0.33%	0.10%	71.3	1.53
RJ169	RJ169-72562	461.00	462.00	1.00	8.82%	0.23%	0.17%	41.6	2
RJ169	RJ169-72563	462.00	463.00	1.00	6.82%	0.16%	0.19%	46.7	2.91
RJ169	RJ169-72564	463.00	464.00	1.00	4.89%	0.13%	0.45%	45	3.27
RJ169	RJ169-72565	464.00	465.00	1.00	5.67%	0.10%	0.10%	23.8	2.46
RJ169	RJ169-72566	465.00	466.00	1.00	3.09%	0.10%	0.16%	23.9	0.617
RJ169	RJ169-72567	466.00	467.00	1.00	5.13%	0.22%	0.11%	57.5	2.1
RJ169	RJ169-72568	467.00	468.00	1.00	1.77%	0.14%	0.15%	25.5	1.62
RJ169	RJ169-72569	468.00	469.00	1.00	4.54%	0.31%	0.40%	76.2	1.16
RJ169	RJ169-72570	469.00	470.00	1.00	3.80%	0.07%	0.07%	31.8	0.459



Hole	Sample No.	From	To	Length	Cu %	Pb %	Zn %	Ag g/t	Au g/t
RJ169	RJ169-72571	470.00	471.00	1.00	5.91%	0.19%	0.28%	61.2	1.37
RJ169	RJ169-72572	471.00	472.00	1.00	4.15%	0.08%	0.11%	35	0.229
RJ169	RJ169-72573	472.00	473.00	1.00	4.30%	0.03%	0.08%	29.6	2.38
RJ169	RJ169-72574	473.00	474.00	1.00	3.51%	0.09%	0.13%	38.4	0.355
RJ169	RJ169-72575	474.00	475.00	1.00	1.66%	0.03%	0.04%	14.7	0.16
RJ169	RJ169-72576	475.00	476.00	1.00	3.91%	0.16%	0.06%	39.2	0.931
RJ169	RJ169-72577	476.00	477.00	1.00	5.05%	0.15%	0.06%	50.6	0.314
RJ169	RJ169-72578	477.00	478.00	1.00	2.39%	0.09%	0.02%	28.5	0.227
RJ169	RJ169-72579	478.00	479.00	1.00	1.45%	0.19%	0.14%	27.4	0.156
RJ169	RJ169-72580	479.00	480.00	1.00	0.83%	0.11%	0.09%	12.8	0.096
RJ169	RJ169-72581	480.00	481.00	1.00	0.96%	0.05%	0.05%	12.1	0.093
RJ169	RJ169-72582	481.00	482.00	1.00	1.14%	0.11%	0.07%	18.7	0.321
RJ169	RJ169-72583	482.00	483.00	1.00	0.90%	0.03%	0.02%	9	0.069
RJ169	RJ169-72584	483.00	484.00	1.00	1.02%	0.05%	0.03%	9.2	0.13
RJ169	RJ169-72585	484.00	485.00	1.00	1.14%	0.04%	0.05%	11.7	0.131
RJ169	RJ169-72586	485.00	486.00	1.00	1.18%	0.04%	0.12%	10.7	0.211
RJ169	RJ169-72587	486.00	487.00	1.00	0.90%	0.05%	0.15%	10.8	0.075
RJ169	RJ169-72588	487.00	488.00	1.00	0.34%	0.02%	0.14%	4.9	0.035
RJ169	RJ169-72589	488.00	489.00	1.00	0.29%	0.03%	0.04%	5.9	0.04
RJ169	RJ169-72590	489.00	490.00	1.00	0.06%	0.00%	0.03%	0.5	0.005
RJ169	RJ169-72591	490.00	491.00	1.00	0.17%	0.01%	0.03%	1.1	0.028
RJ169	RJ169-72592	491.00	492.00	1.00	0.06%	0.01%	0.02%	0.9	0.005
RJ169	RJ169-72593	492.00	493.00	1.00	0.04%	0.01%	0.02%	0.5	0.005
RJ169	RJ169-72594	493.00	494.00	1.00	0.04%	0.01%	0.01%	0.5	0.005
RJ169	RJ169-72595	494.00	495.00	1.00	0.03%	0.00%	0.01%	0.6	0.003
RJ169	RJ169-72596	495.00	496.00	1.00	0.02%	0.01%	0.01%	0	0.003
RJ169	RJ169-72597	496.00	497.00	1.00	0.01%	0.01%	0.01%	1.3	0.003
RJ169	RJ169-72598	497.00	498.00	1.00	0.02%	0.02%	0.01%	2.2	0.004
RJ169	RJ169-72599	498.00	499.00	1.00	0.02%	0.01%	0.01%	0	0.002
RJ169	RJ169-72600	499.00	500.00	1.00	0.00%	0.00%	0.00%	0	0.001
RJ169	RJ169-72601	500.00	501.00	1.00	0.02%	0.01%	0.02%	0	0.011
RJ169	RJ169-72602	501.00	502.00	1.00	0.04%	0.02%	0.06%	0	0.005
RJ169	RJ169-72603	502.00	503.00	1.00	0.05%	0.02%	0.05%	0.9	0.002
RJ169	RJ169-72604	503.00	504.00	1.00	0.03%	0.02%	0.04%	0	0.007
RJ169	RJ169-72605	504.00	505.00	1.00	0.01%	0.01%	0.02%	0	0.001
RJ169	RJ169-72606	505.00	506.00	1.00	0.02%	0.00%	0.02%	0	0.019
RJ169	RJ169-72607	506.00	507.00	1.00	0.05%	0.00%	0.02%	0	0.006
RJ169	RJ169-72608	507.00	508.00	1.00	0.39%	0.07%	0.20%	3.8	0.054
RJ169	RJ169-72609	508.00	509.00	1.00	0.13%	0.07%	0.23%	2	0.012