



## Investor Presentation

# “Unlocking Value in the Bowen Basin”

Gavin May

July 2011

# Disclaimer

---



**Disclaimer:** This presentation is not a prospectus nor an offer of securities for subscription or sale in any jurisdiction nor a securities recommendation. The information in this presentation is an overview and does not contain all information necessary for investment decisions. In making investment decisions, investors should rely on their own examination of Newland Resources Limited and consult with their own legal, tax, business and/or financial advisers in connection with any acquisition of securities. The information contained in this presentation has been prepared in good faith by Newland Resources Limited. However, no representation or warranty, express or implied, is made as to the accuracy, correctness, completeness or adequacy of any statements, estimates, opinions or other information contained in this presentation. To the maximum extent permitted by law, Newland Resources Limited, its directors, officers, employees and agents disclaim liability for any loss or damage which may be suffered by any person through the use of, or reliance on, anything contained in or omitted from this presentation. Certain information in this presentation refers to the intentions of Newland Resources Limited, but these are not intended to be forecasts, forward looking statements, or statements about future matters for the purposes of the Corporations Act or any other applicable law. The occurrence of events in the future are subject to risks, uncertainties and other factors that may cause Newland's actual results, performance or achievements to differ from those referred to in this presentation will actually occur as contemplated. The presentation contains only a synopsis of more detailed information published in relation to the matters described in this document and accordingly no reliance may be placed for any purpose whatsoever on the sufficiency or completeness of such information and to do so could potentially expose you to a significant risk of losing all of the property invested by you or incurring by you of additional liability. Recipients of this presentation should conduct their own investigation, evaluation and analysis of the business, data and property described in this document. In particular any estimates or projections or opinions contained herein necessarily involve significant elements of subjective judgment, analysis and assumptions and you should satisfy yourself in relation to such matters.

**Competent Person's Statement:** The information in this announcement that relates to the mineral resources is based on information evaluated by Rob Dyson who is a Fellow of the Australasian Institute of Mining and Metallurgy (AusIMM). Mr Dyson is a fulltime employee of McElroy Bryan Geological Services Pty Ltd. Mr Dyson is a qualified geologist and has sufficient experience which is relevant to the style of mineralisation and type of deposit under consideration and the activity which he is undertaking to qualify as a Competent Person as defined in the 2004 Edition of the 'Australasian Code for Reporting of Exploration Results, Mineral Resources and Ore Reserves' (JORC Code). Mr Dyson consents to the inclusion in the report of the matters based on his information in the form and context in which it appears.

- **The Company's Assets**
- **Comet Ridge "The Priority Project"**
- **The Plan for the Future**

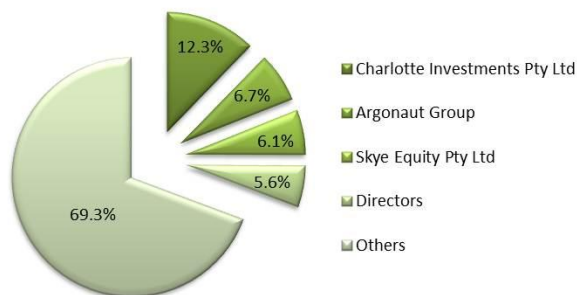
# Company Overview



## Capital Structure (Undiluted)

Share Price (11 July 2011)	\$0.10
Fully Paid Ordinary Shares	733m
Market Capitalisation	\$73m
Cash & Investments	\$2.5m
Debt	\$0.0m

## Share Ownership



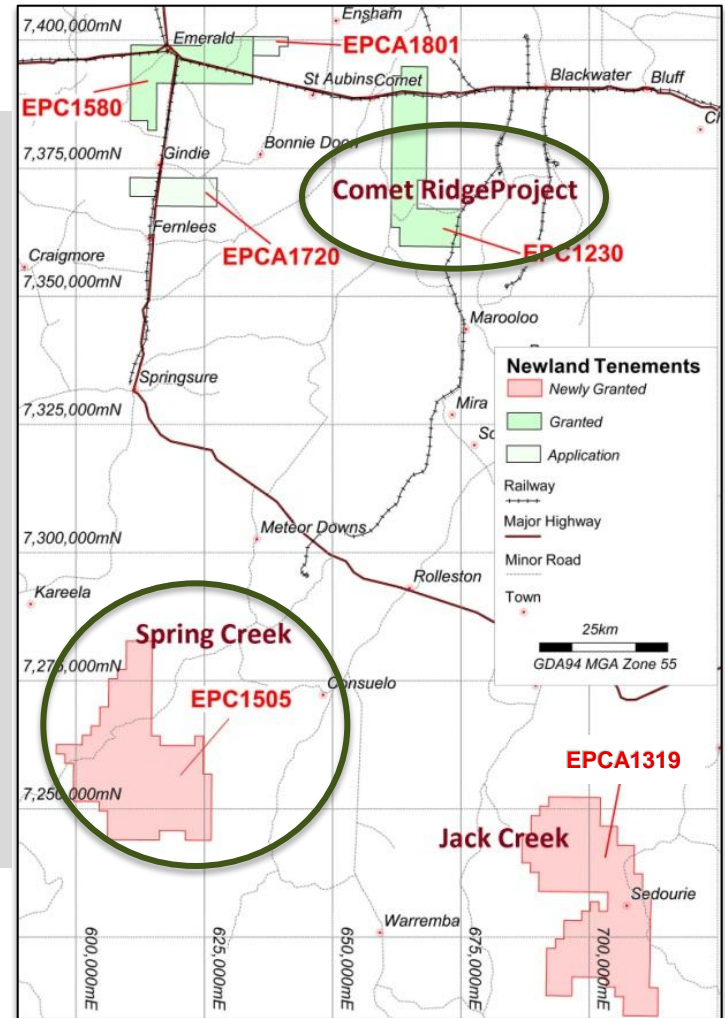
## Board and Management

Non-Executive Chairman	Dr Tim Sugden
Managing Director	Mr Gavin May
Non-Executive Director	Mrs Amanda Ward
Non-Executive Director	Mr Michael Mulroney
Company Secretary	Ms Liza Carpena

# The Assets

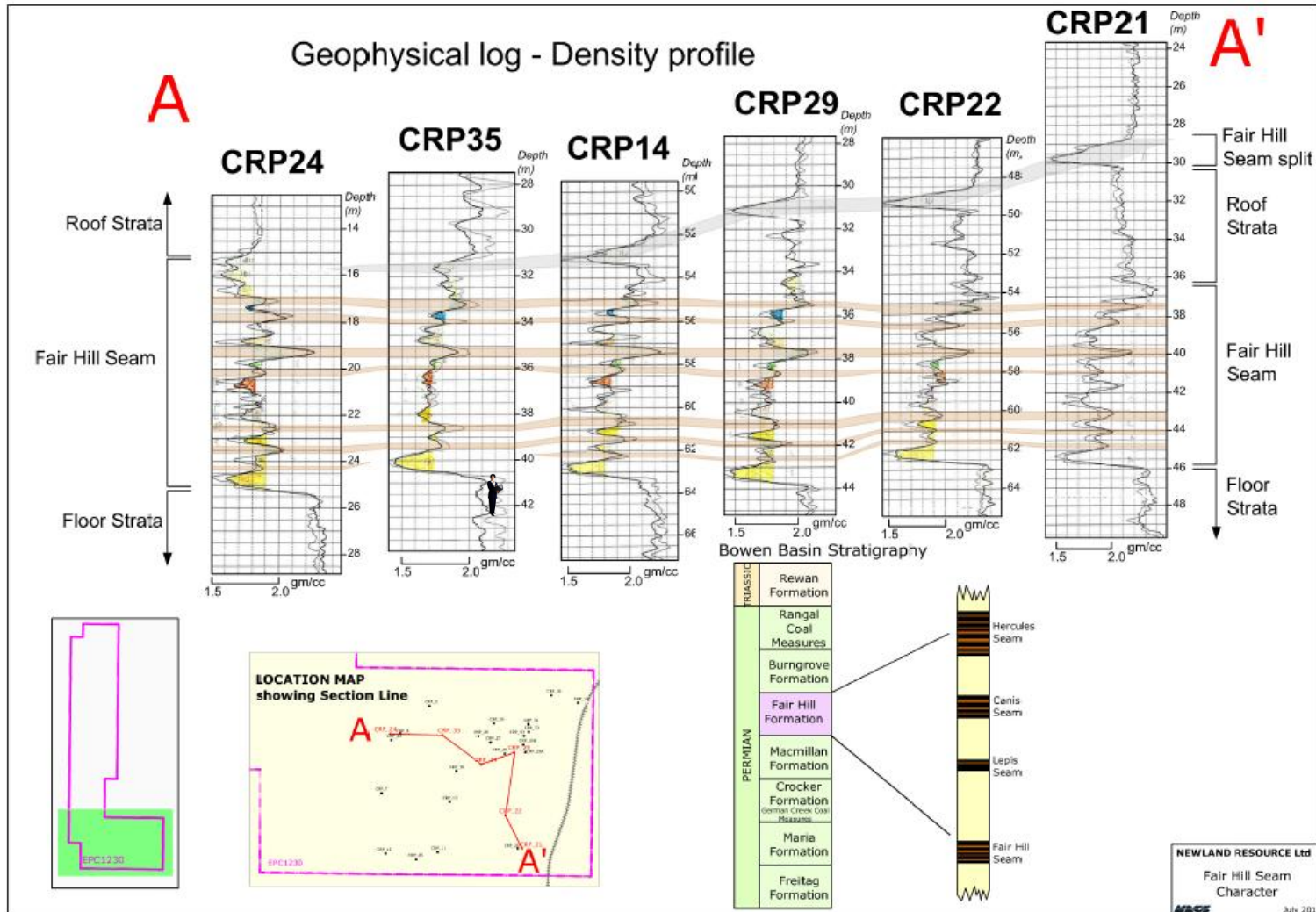
## 5 Prospective Areas in Bowen Basin

- Comet Ridge (EPC 1230)
  - Spring Creek (EPC 1505)
  - Emerald (EPC 1580/EPCA 1801)
  - Gindie (EPCA 1720)
  - Jack Creek (EPCA 1319)
- **First Target – Comet Ridge Project**
  - **Second Priority – Spring Creek**



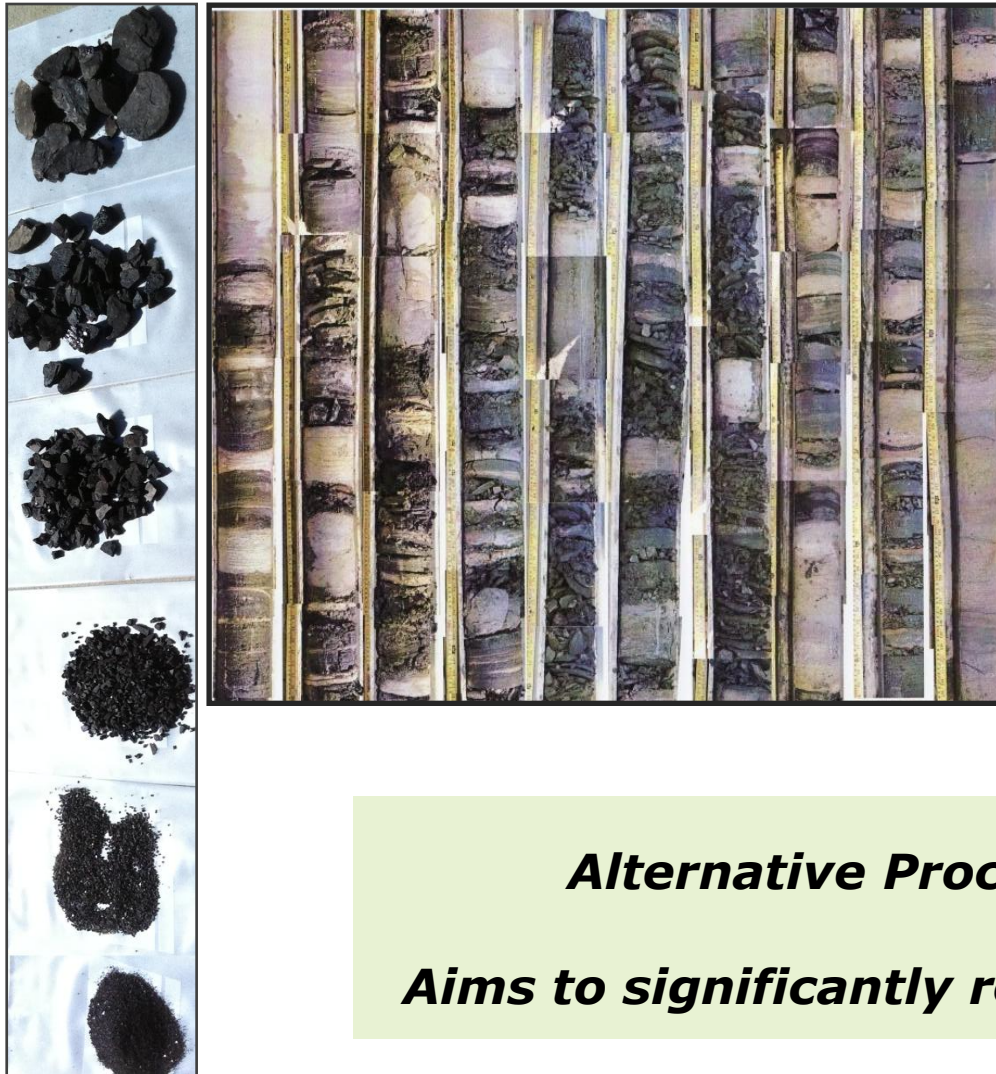
# Comet Ridge Project – Fair Hill Seam

## Thick multi banded coal sequence





# Fair Hill Seam – Unlocking the Value



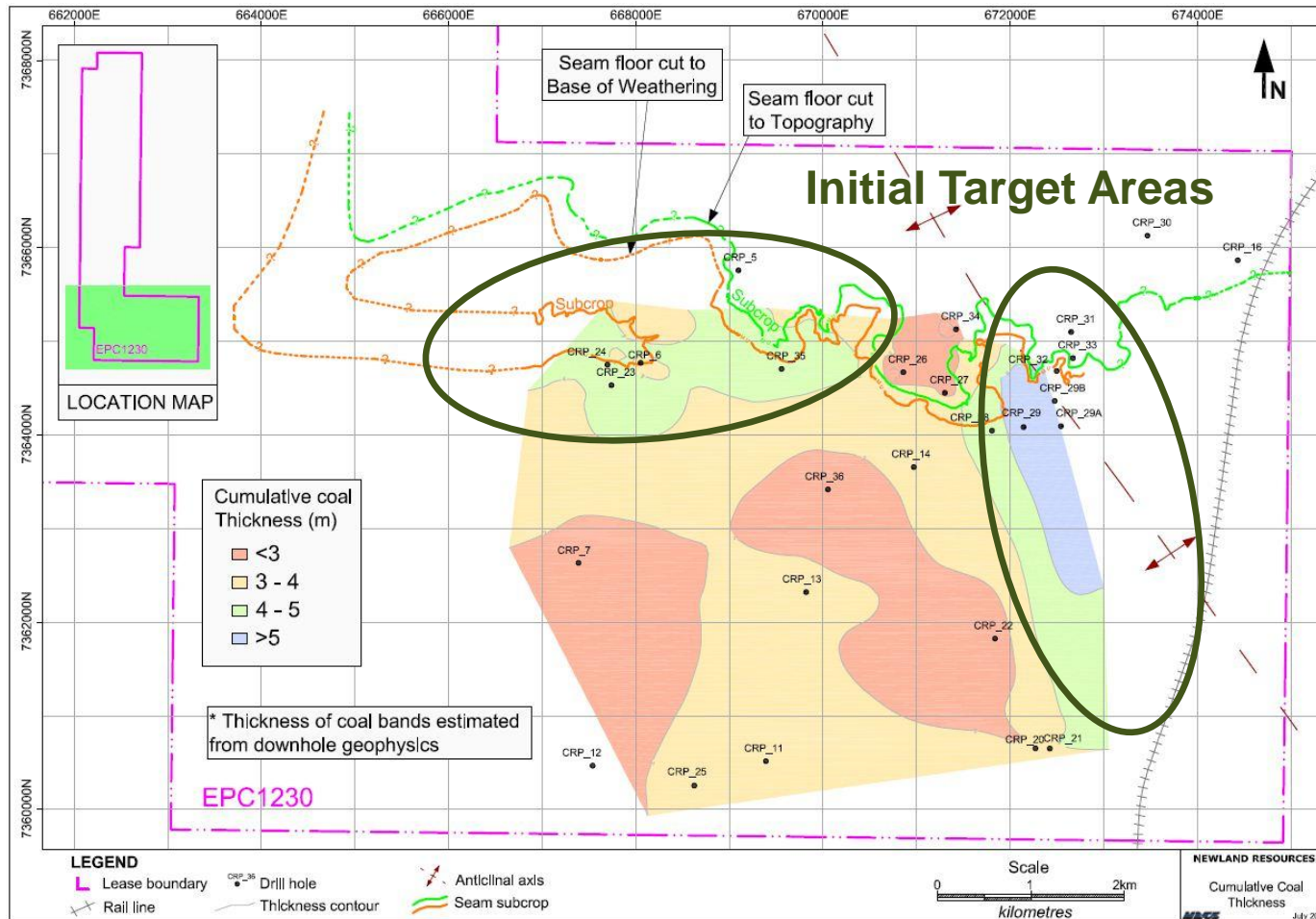
## Fair Hill Seam

- Conventional Washing and/or selective mining – not feasible

## ***Alternative Processing Strategy***

***Aims to significantly reduce Processing Cost***

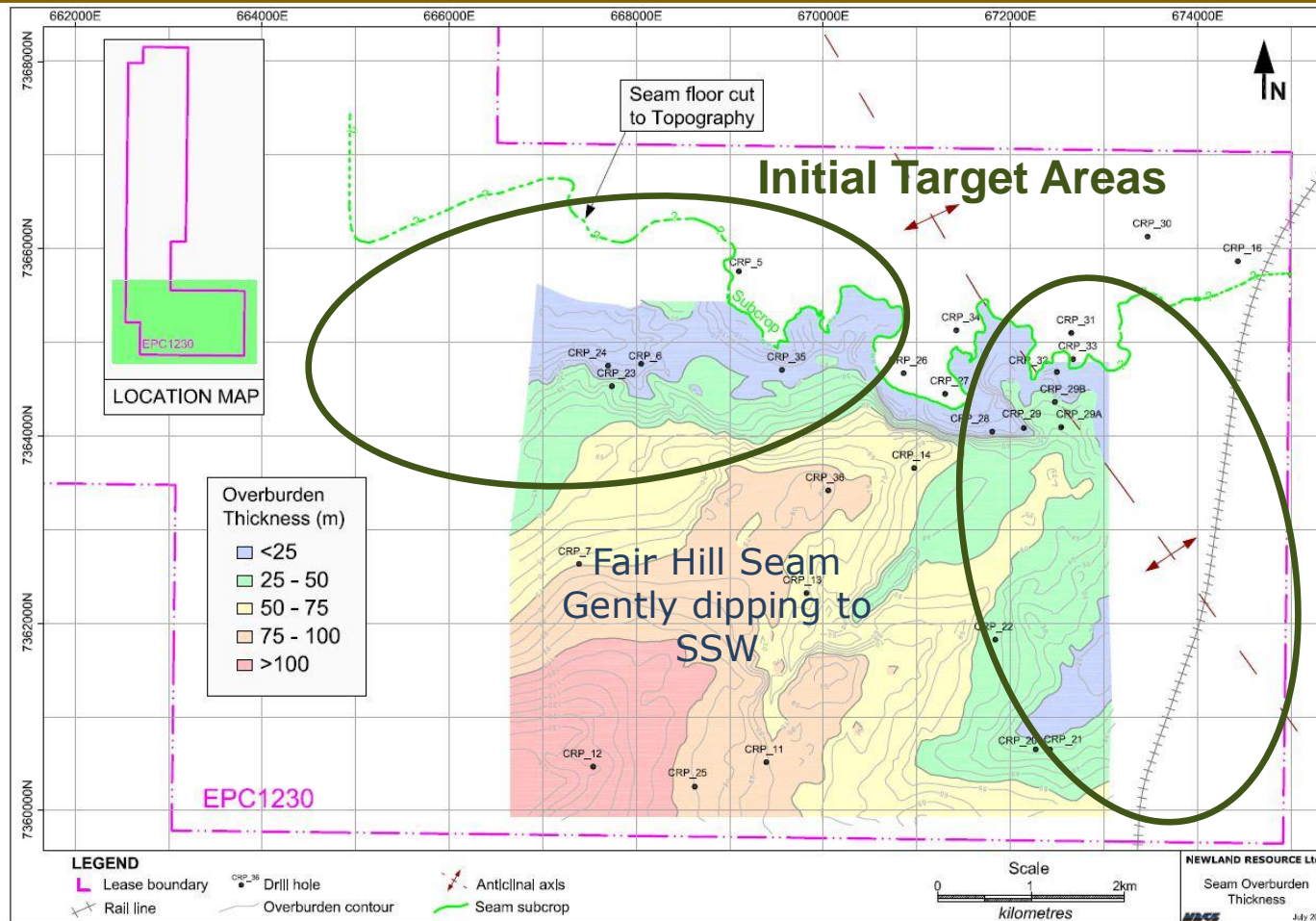
# Fair Hill Seam – Cumulative Coal



**Focus on Cumulative thickness >4m**

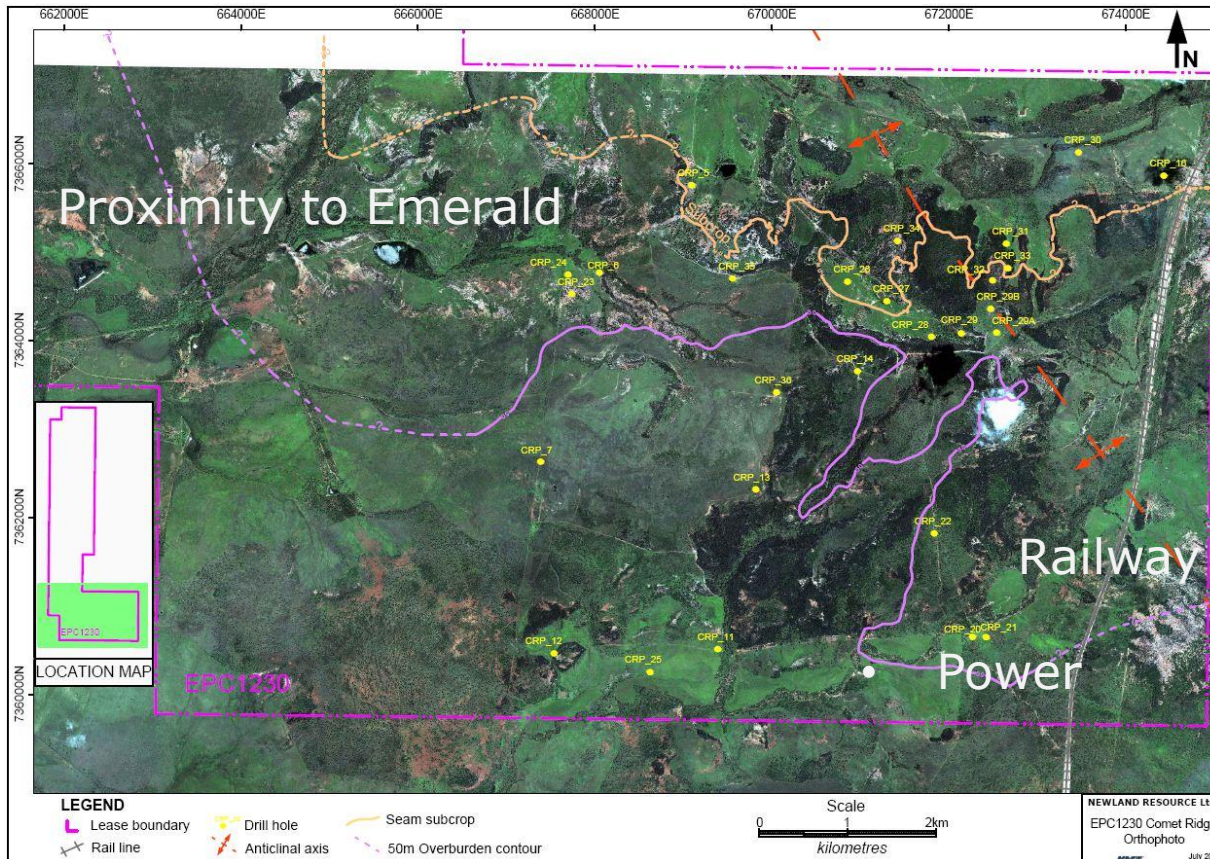


# Fair Hill Seam – Shallow



**Focus on Overburden thickness <50m**

# Comet Ridge – Proximity to Infrastructure



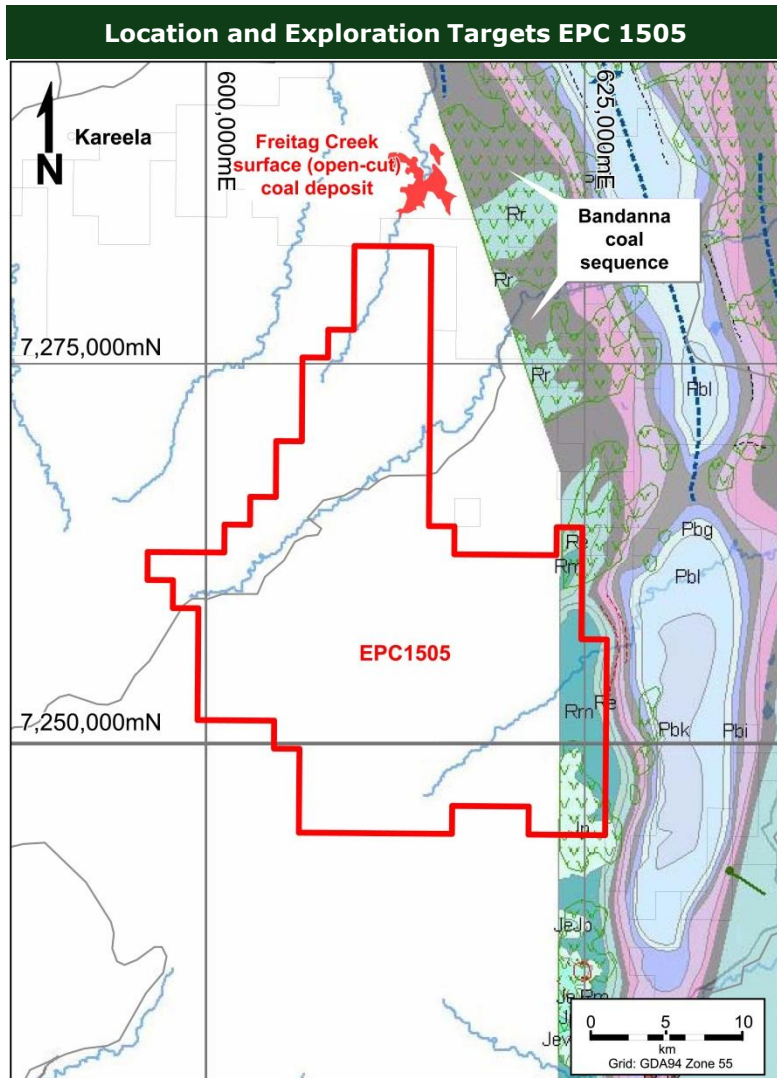
**Next Exploration to focus on;**

**Cumulative coal > 4m**

**Shallow Coal < 50m**

**Processing Strategy**

# Spring Creek – EPC 1505



## Low Ash Thermal Coal Target

- More than 600km<sup>2</sup> of prospective Lease
- Immediately south of MacArthur Coal's West Buckland coal deposit
- Buckland coal sequence dips south directly into Spring Creek
- Coal quality similar to Rolleston export thermal coal.

***Exploration to focus on finding large underground thermal Resource***



# Management Team

---



**Gavin May – MD (Formerly CEO Gloucester Coal/ COO SouthGobi Resources)**

**Harvey Crowden – Metallurgy (Formerly SouthGobi Resources/Rio Tinto)**

**Robert Waring – Finance (Formerly Gloucester Coal)**

**Rob Dyson – McElroy Bryan Geological Services – Exploration Management**

# The Plan – Exploration and Timeline

---



## Comet Ridge (EPC 1230)

- Next Drilling Phase in August/September
- JORC Statement - Q4 2011
- First pass project Economics - Q4 2011

## Spring Creek (EPC 1505)

- Digital Terrain Model, and exploration plan - Q4



# Contact Details

---



**Gavin May - Managing Director**

**T: +61 8 6389 7407**

**Liza Carpena - Company Secretary**

**T: +61 8 6389 7407**

## Registered Office

Suite 3, Level 1  
127 Cambridge Street  
West Leederville WA 6007

E: [info@newlandresources.com](mailto:info@newlandresources.com)

W: [www.newlandresources.com](http://www.newlandresources.com)

## Share Registry

Advanced Share Registry Limited

150 Stirling Highway

Nedlands WA 6009

## Postal Address

PO Box 1156

Nedlands WA 6909

T: +61 8 9389 8033

F: +61 8 9389 7871

E: [admin@advancedshare.com.au](mailto:admin@advancedshare.com.au)

