



nupower

RESOURCES LTD



Presentation July 2011

A Northern Territory Phosphate Focused Company

NuPower Disclaimer

This presentation has been prepared by NuPower Resources Limited (“NuPower” or the “Company”). It should not be considered as an offer or invitation to subscribe for, or purchase any, securities in the Company or as an inducement to make an offer or invitation with respect to those securities. No agreement to subscribe for securities in the Company will be entered into on the basis of this presentation.

This presentation contains forecasts, projections and forward looking information. Such forecasts, projections and information are not a guarantee of future performance and involve unknown risks and uncertainties, many of which are out of NuPower’s control. Actual results and developments will almost certainly differ materially from those expressed or implied. NuPower has not audited or investigated the accuracy or completeness of the information, statements and opinions contained in this presentation. To the maximum extent permitted by applicable laws, NuPower makes no representation and can give no assurance, guarantee or warranty, express or implied, as to, and takes no responsibility and assumes no liability for (1) the authenticity, validity, accuracy, suitability or completeness of, or any errors in or omission from, any information, statement or opinion contained in this presentation and (2) without prejudice to the generality of the foregoing, the achievement or accuracy of any forecasts, projections or other forward looking information contained or referred to in this presentation.

Throughout this presentation all figures are quoted in A\$ dollars unless otherwise stated. You should not act in reliance on this presentation material. This overview of the Company does not purport to be all inclusive or to contain all information which its recipients may require in order to make an informed assessment of NuPower’s prospects. You should conduct your own investigation and perform your own analysis in order to satisfy yourself as to the accuracy and completeness of the information, statements and opinions contained in this presentation before making any investment decision.

NuPower Competent Person’s Statement

The information in this presentation that relates to Exploration Results and Mineral Resources is based on information compiled by Mr Andrew Johnstone who is an Officer of the Company. Mr Johnstone is a Member of the Australian Institute of Geoscientists. Mr Johnstone has sufficient experience which is relevant to the style of mineralisation and type of deposit under consideration and to the activity which he is undertaking to qualify as a Competent Person as defined in the 2004 Edition of the ‘Australasian Code for Reporting of Exploration Results, Mineral Resources and Ore Reserves’. Mr Johnstone consents to the inclusion in this report of the matters based on the information in the form and context in which it appears.

Presentation Focus

COMPANY SNAPSHOT

Corporate Information

Current Projects/Status

NUPOWER – PROJECTS

Phosphate

- [Arganara](#)
- [Lucy Creek](#)
- [Warrabri](#)

Rare Earths – Other (Appendix A)

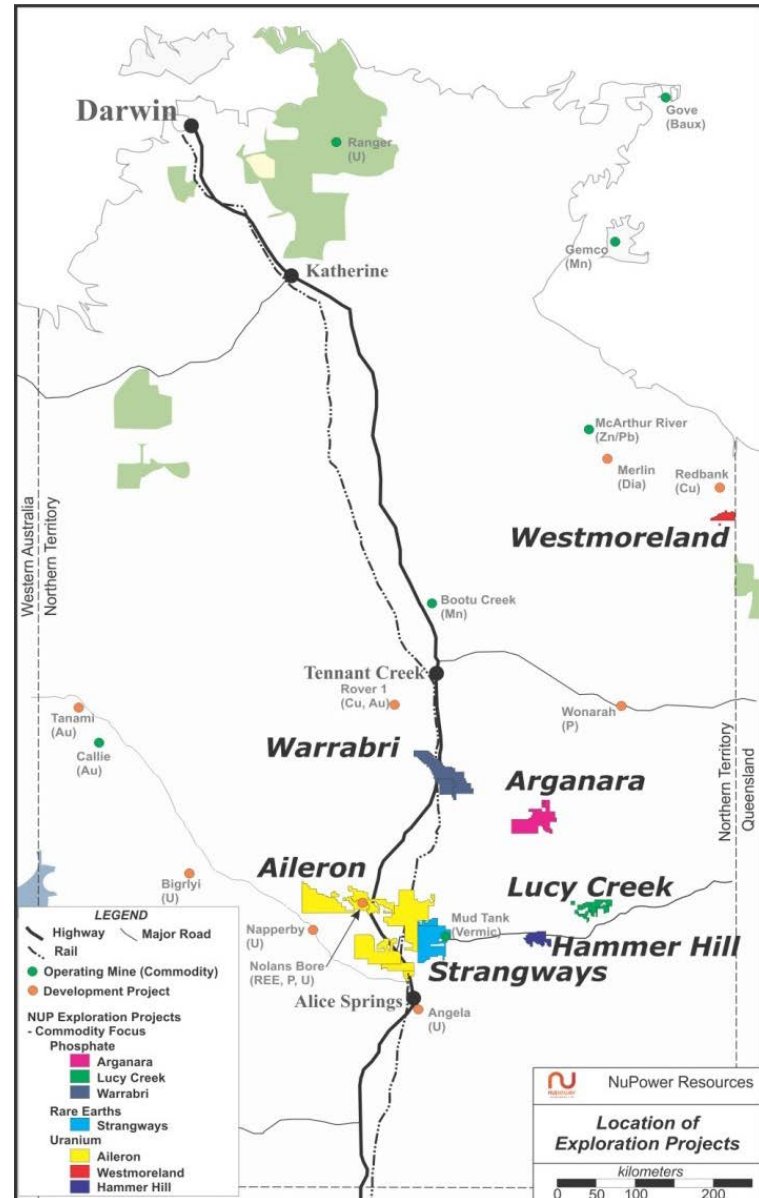
- Strangways
- Hammer Hill

Uranium (Appendix A)

- Westmoreland
- Aileron

NUPOWER – GROWTH

Growth - Development Strategy - Steps



NuPower Phosphate Strategy

NuPower will build a portfolio of phosphate projects through exploration, definition and development.

KEY NUPOWER GOALS

Increase value of current Phosphate Assets

- Further surface exploration – Rock chip sampling
- Exploration drilling

Build Phosphate inventory to over 500mt (Inc. DSO ore)

- Exploration drilling
- Resource definition drilling

Increase market cap to A\$100m then A\$250m & beyond

- Positive exploration news
- Definition of resources
- Development of phosphate operations
- Divestment of non core assets – Joint Ventures
- Commercial Relationships – Off take agreements

Increase size and value of NuPower
Phosphate inventory through :
Exploration, Definition, Development

Arganara, Lucy Creek, Warrabri
New Opportunities

Potential for Large Phosphate Deposits

- ✓ Two advanced Phosphate projects with substantial potential for growth, **Arganara** and **Lucy Creek**
-Both projects are capable of delivering large phosphate deposits with DSO potential (+30% P₂O₅)
- ✓ **Arganara** and **Lucy Creek** phosphate projects both lie in the Georgina Basin phosphate province which hosts a number of +500mt phosphate deposits and mines currently operating and producing phosphate
- ✓ NuPower's' **Arganara** Project lies right beside Rum Jungle Resources (ASX:RUM) Barrow Creek 1/Ammaroo phosphate project where RUM has already completed over 10,000m of shallow drilling aimed at defining a JORC resource. RUM has intersected +30% phosphate in many of their holes, 30% Phosphate is a saleable direct ship ore product (DSO)
- ✓ At **Arganara** phosphate extends onto NuPower tenements from RUM's deposit and phosphate is also present over 25km further to the west at **Limestone Bore** and to the North at **Anomaly L** again both on NuPower's tenement. NuPower drilling on extensions of RUM's Barrow Creek 1 Phosphate is scheduled to begin in late July / early August
- ✓ At **Lucy Creek** Nupower has also confirmed phosphate and completed a small drill program showing significant phosphate grades at the **Patanella** prospect
- ✓ NuPower also has phosphate on it's **Warrabri** Project which lies on the Stewart Highway and Darwin to Adelaide rail line

NuPower

ASX: NUP

**Market Cap
\$13.7 million**

**Shares on Issue:
371.5 million**

**Unlisted options
5 million
(exp: 6/2013 @ 3.5c)**

**New Rights Issue
Open, closes 14 July
1 for 4 at 3.2c
77,864,621 shares
(raising~A\$2.49m)**

Experienced Board and Management Team

Mick Muir	Chairman
Andrew Johnstone	Managing Director
John Jackson	Non-executive Director
Ian Kowalick	Non-executive Director
Bob Owen	Non-executive Director
Anthony Schildkraut	Company Sec. CFO

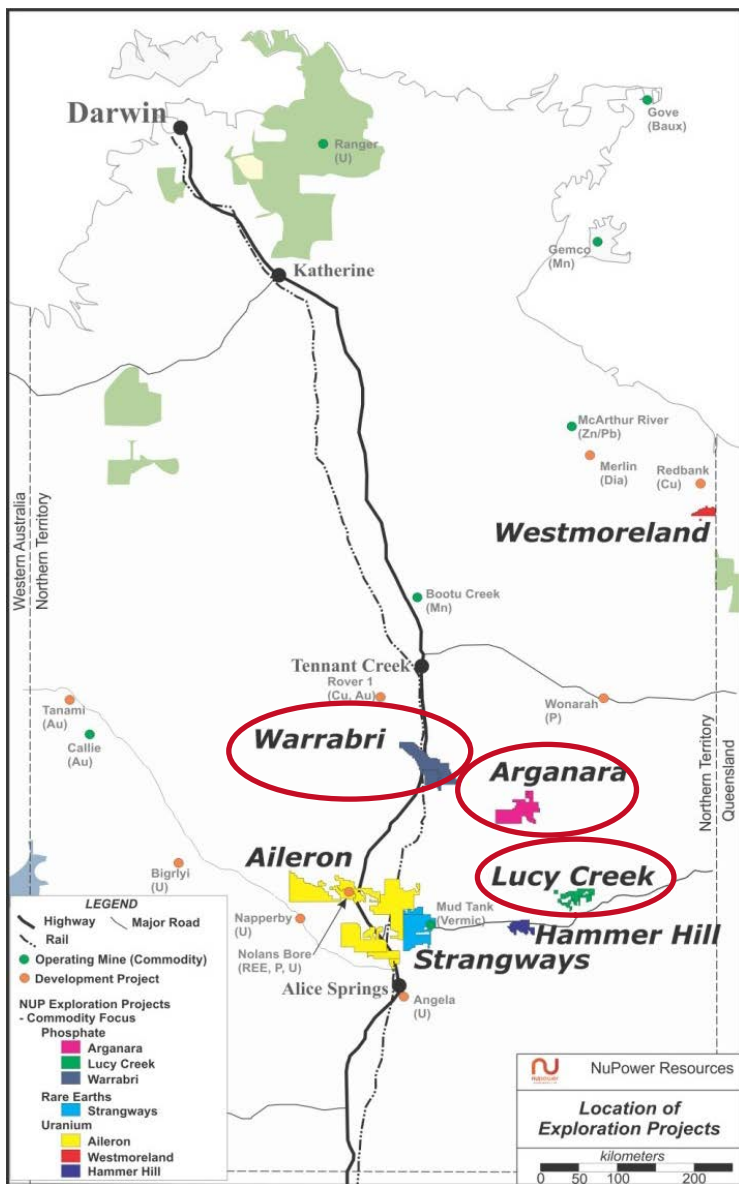


Andrew Johnstone (Managing Director): a mining and resources executive with 20 years experience including COO, GM and Board positions in the mining sector.

Grant Davey (Chief Geologist): a chief geologist with over 30 years experience in the exploration and mining industry covering a wide range of commodities and projects from grass-roots exploration to development and mining

Kerri Carpenter: Tenement Manager

Phosphate



Arganara

Arganara is NuPower's focus due to its proximity to Rum Jungles Resources Barrow Creek 1/Ammaroo phosphate project, extensions of which extend onto NuPower's tenement. At Arganara phosphate is also confirmed in rock chips from **Limestone Bore** over 25km to the east and **Anomaly L** to the north of Arganara. In late July NuPower hopes to begin a substantial drill program to both confirm and extend the Barrow Creek 1 mineralisation and show the tonnage potential of Arganara. Arganara is only 150km to Darwin/Adelaide rail line.

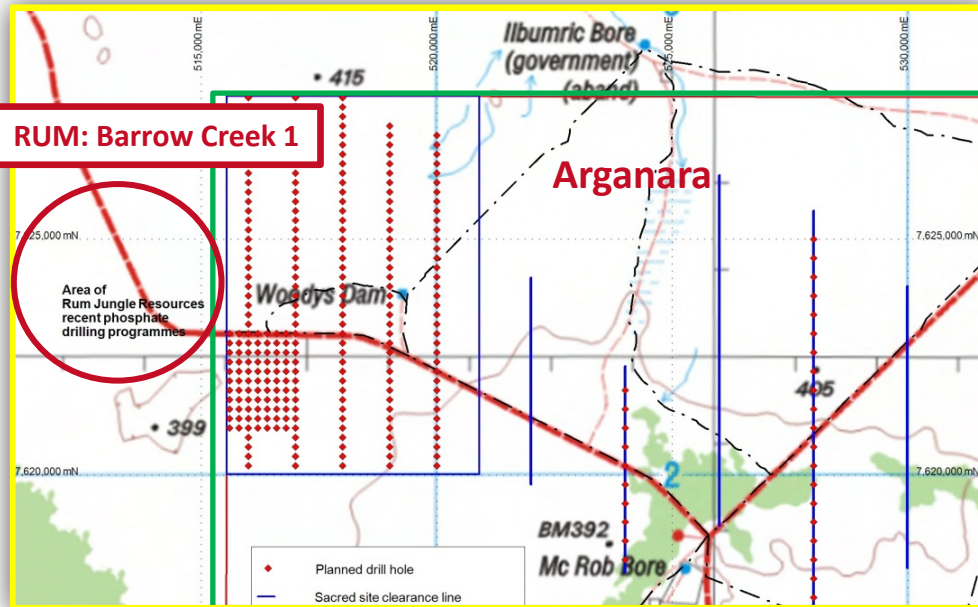
Lucy Creek

Previous exploration discovered phosphate at Patanella. NuPower in 2009 confirmed results through drilling a number of shallow holes, economic thicknesses with grades above 30% P_2O_5 were reported to market. In September/October 2011 NuPower plans to revisit Lucy Creek to conduct further step out exploration drilling.

Warrabri

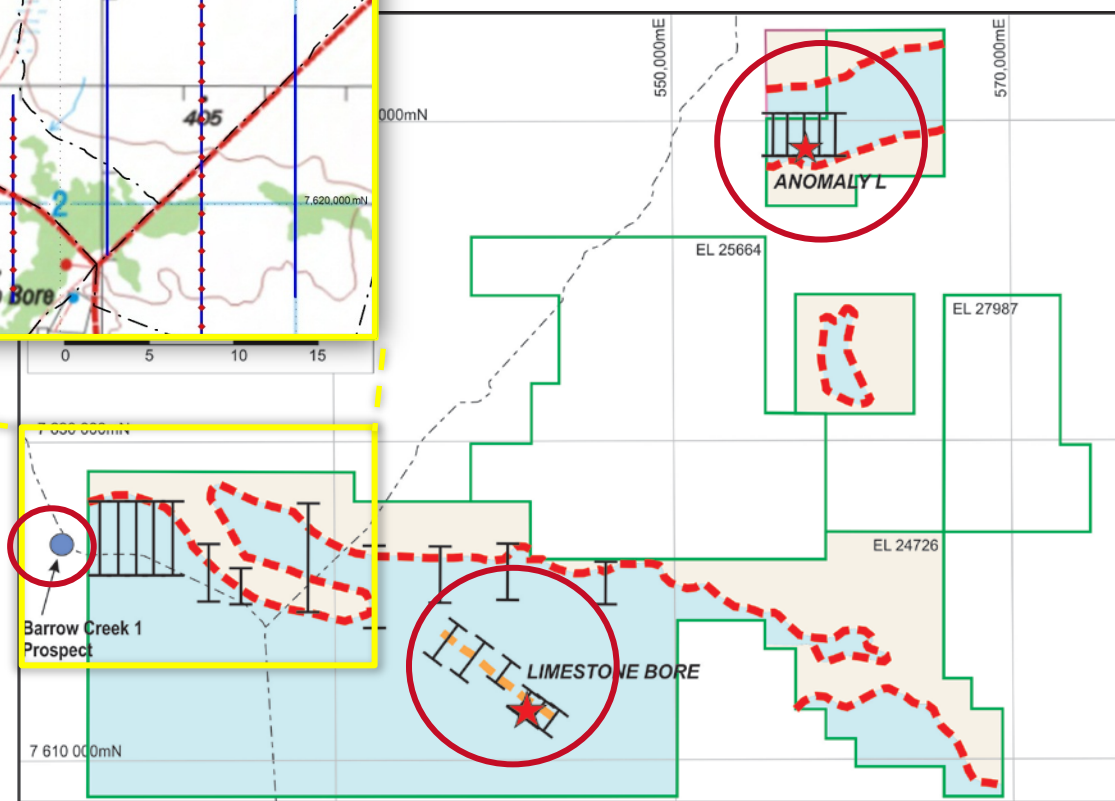
Phosphate confirmed in water bore drill holes, surface exploration and possible drilling planned for late 2011.

Arganara Phosphate



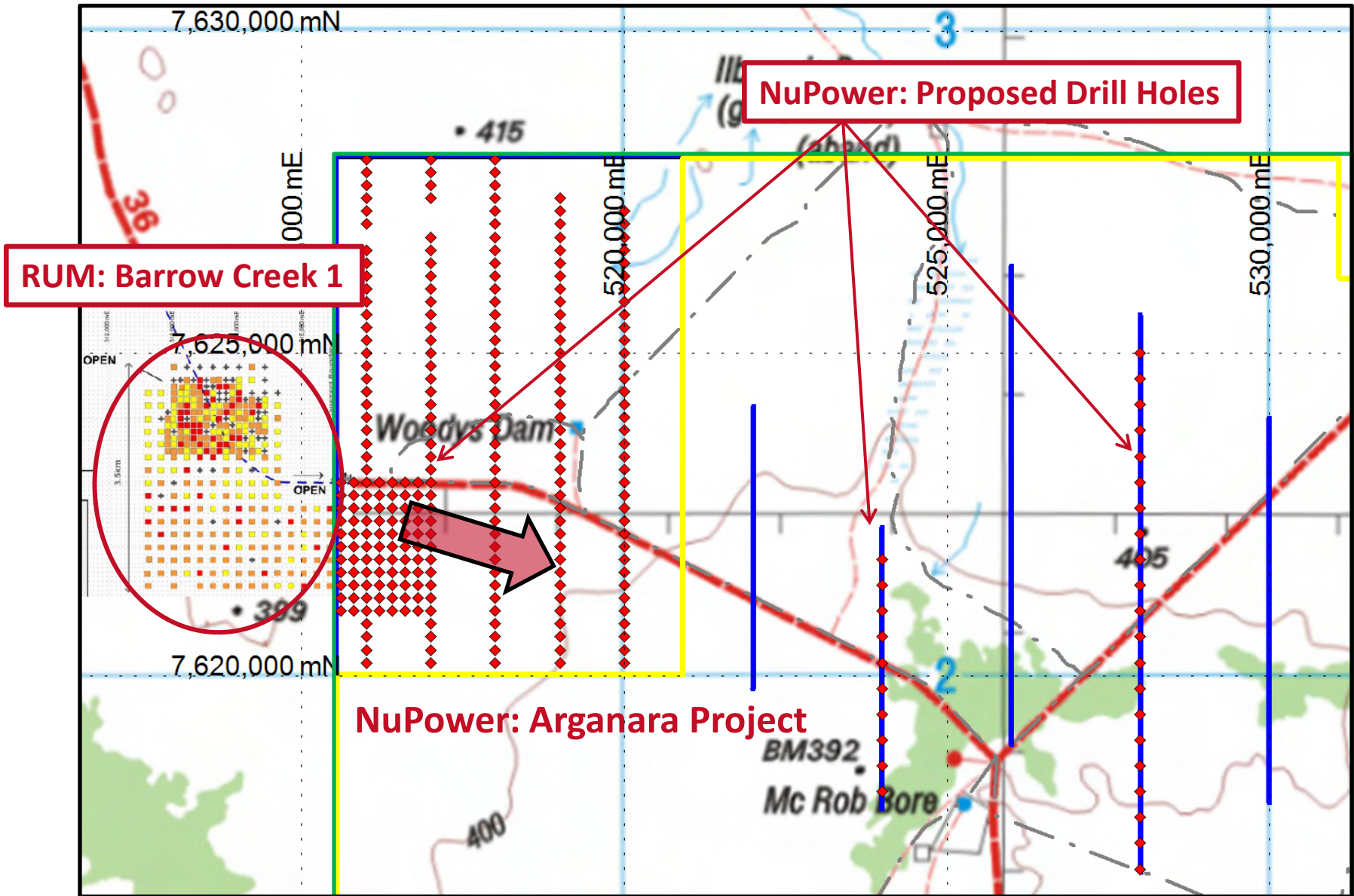
Anomaly L, Historically RTZ reported rock chip samples that assayed between 20% and 40.7% P_2O_5 . NuPower confirmed phosphate in the area with assays 31.8% and 37.6% P_2O_5 . Mineralisation was also found 1km west of Anomaly L where 3 samples assayed between 15.2- 27% P_2O_5 from a 5m thick interval.

Limestone Bore, drilling by VAM in the 1970's, intersected Phosphate in three holes. NuPower sample assayed between 1.21 and 17% P_2O_5 with 6 samples assaying 10% P_2O_5 or better. The horizon is open along strike to the NW and SE

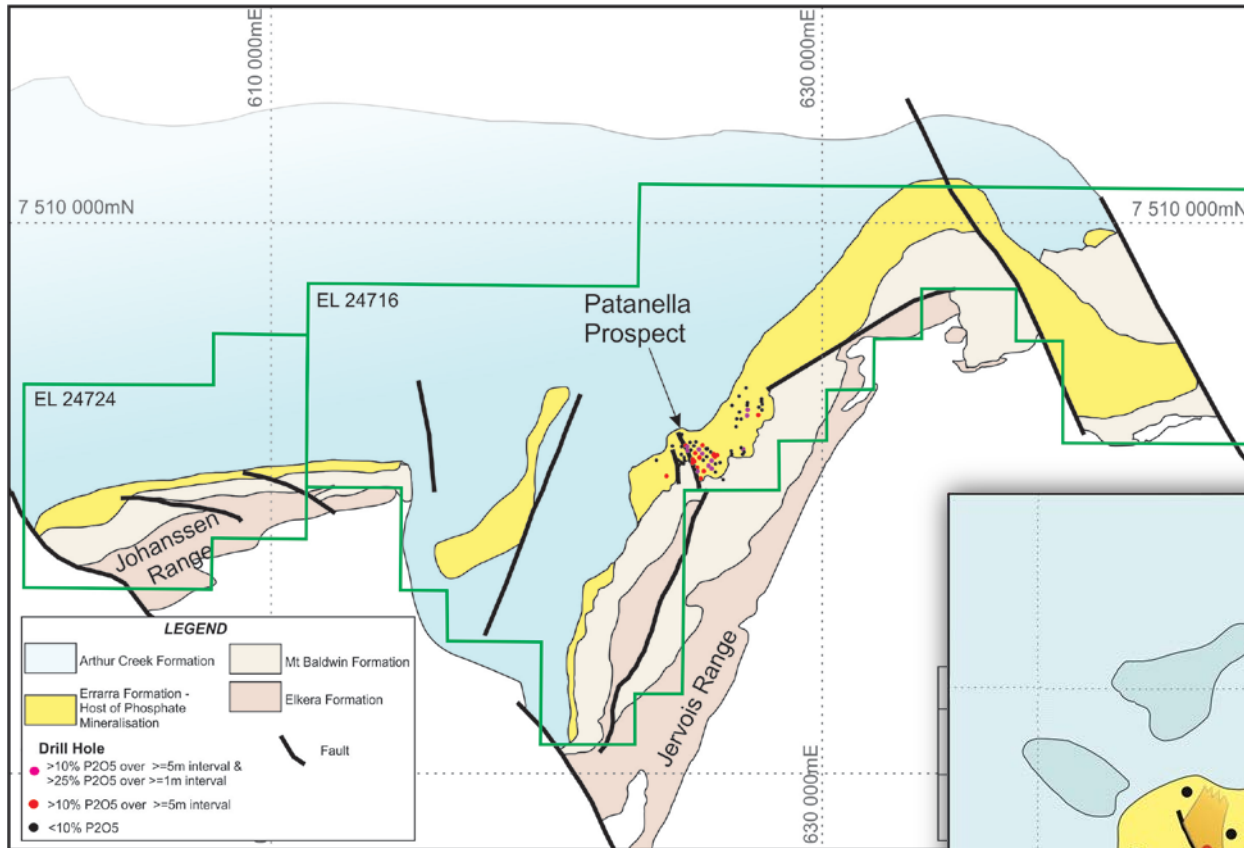


Hole_ID	Intersection P2O5	From (m)
L2	2.7m @ 21.8%	25.9
L4	20.1m @ 9.1%	38.1
Incl.	9.1m @ 14.7%	38.1
L5	7.3m @ 6.0%	28.0

Arganara Phosphate



Lucy Creek Phosphate



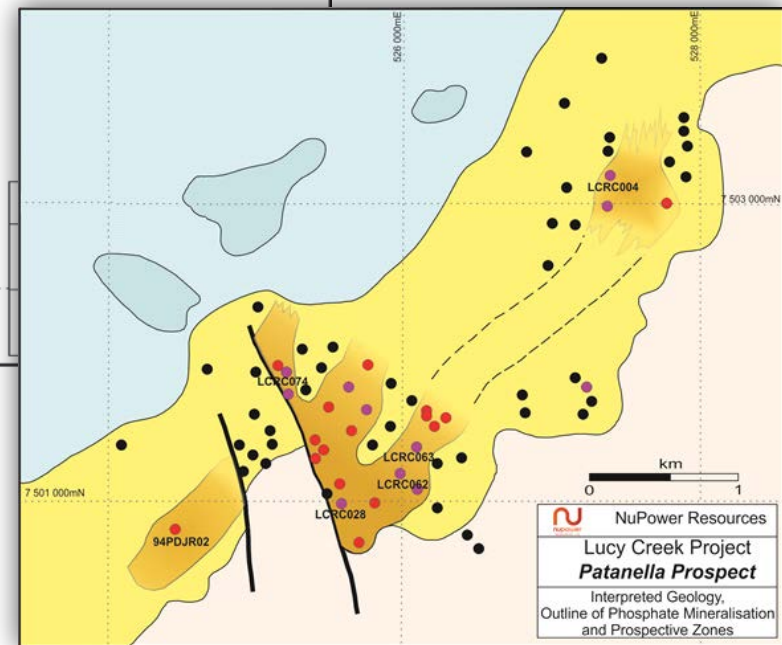
At **Lucy Creek** in 2009 Nupower drilled significant thickness of shallow, high grade phosphate

-10m @ 32% P₂O₅ from 20m

There is 35km of potential host stratigraphy only ~ 5km currently tested

Exploration is required to define extent of phosphate at Patanella and along 35km horizon (yellow in figures)

Deleterious elements are low and studies of the mineralogy indicate that fluorapatite is the main phosphate phase present, in common with other deposits in the Georgina. Lucy Creek has excellent DSO potential.

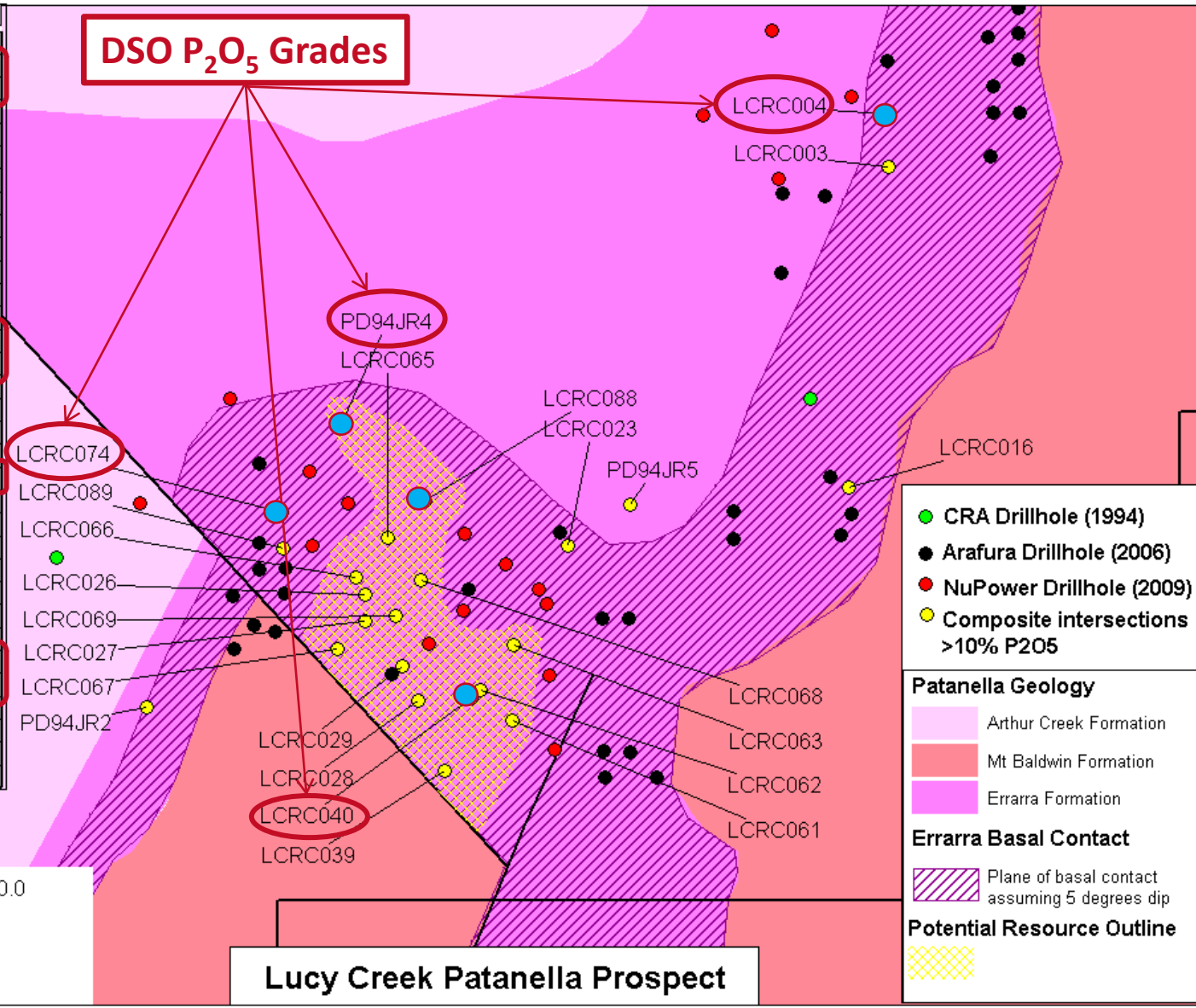


NuPower Resources
Lucy Creek Project
Patanella Prospect
 Interpreted Geology,
 Outline of Phosphate Mineralisation
 and Prospective Zones

Lucy Creek, Patenella prospect

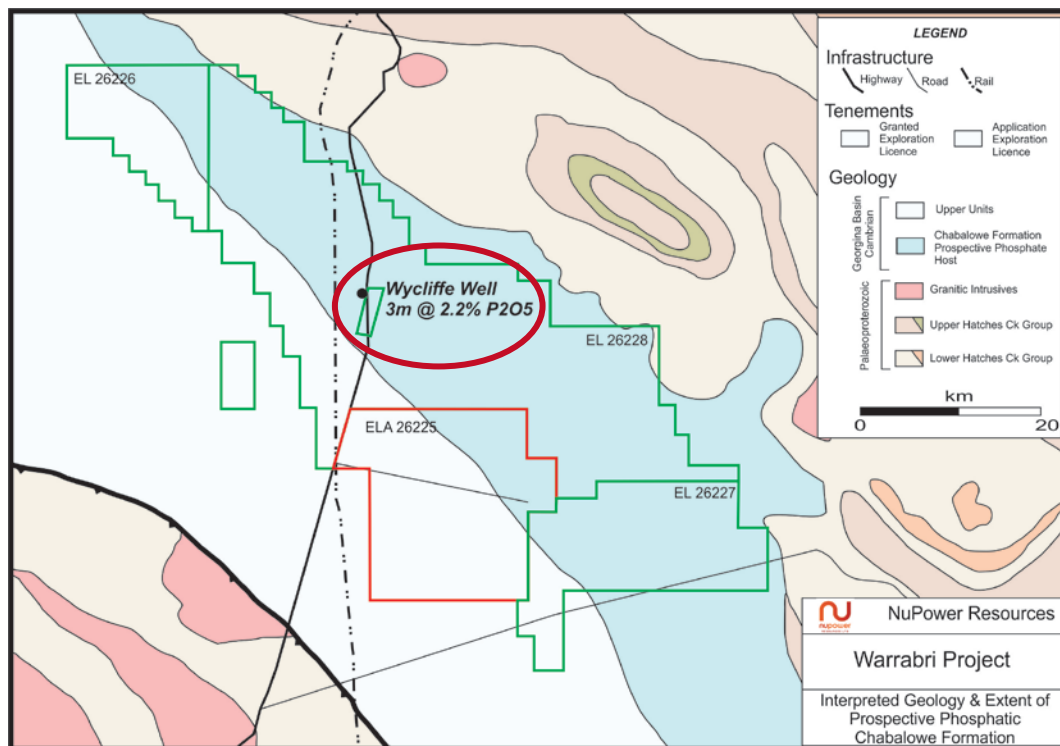
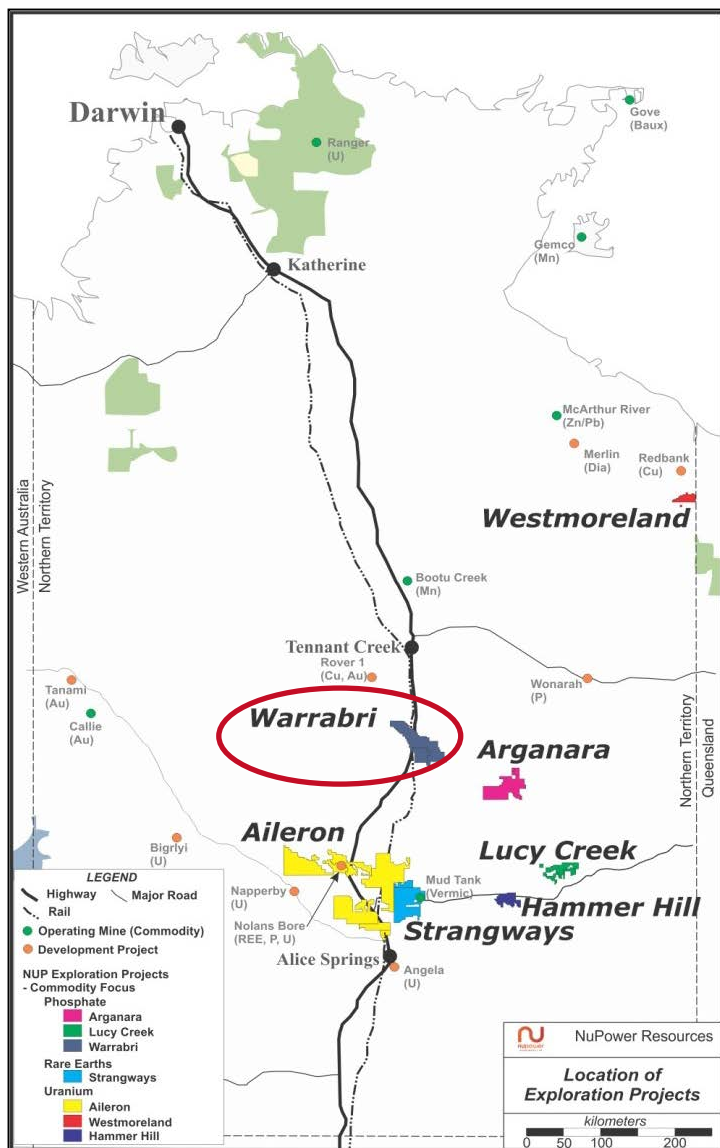
Hole_ID	P2O5	From
LCRC003	10m @ 15.7%	25m
LCRC004	10m @ 21.7%	30m
incl	5m @ 26.0%	30m
LCRC016	5m @ 17.6%	35m
LCRC023	16m @ 15.7%	15m
LCRC026	5m @ 17.2%	15m
LCRC027	5m @ 10.7%	15m
LCRC028	10m @ 16.3%	35m
incl	5m @ 22.4%	35m
LCRC029	20m @ 18.2%	10m
incl	5m @ 24.0%	10m
and	5m @ 21.9%	20m
LCRC038	5m @ 21.0%	5m
LCRC040	10m @ 21.7%	5m
incl	5m @ 30.6%	5m
LCRC061	5m @ 23.0%	5m
LCRC062	10m @ 17.0%	5m
LCRC063	10m @ 22.0%	15m
LCRC068	10m @ 18.0%	40m
LCRC074	10m @ 32.0%	20m
LCRC074	5m @ 17.0%	35m
LCRC074	10m @ 16.0%	45m
LCRC089	10m @ 19.0%	15m
LCRC089	5m @ 17.0%	35m
LCRC089	10m @ 17.0%	50m
PD94JR02	15m @ 12.68%	45
incl	5m @ 21.74%	50m
PD94JR04	40m @ 13.98%	0m
incl	5m @ 29.25%	5m
and	35m @ 7.20%	30m
incl	10m @ 13.56%	60m
PD94JR05	50m @ 5.28%	0m
incl	5m @ 16.45%	40m

DSO P₂O₅ Grades



Lucy Creek Patenella Prospect

Warrabri Phosphate

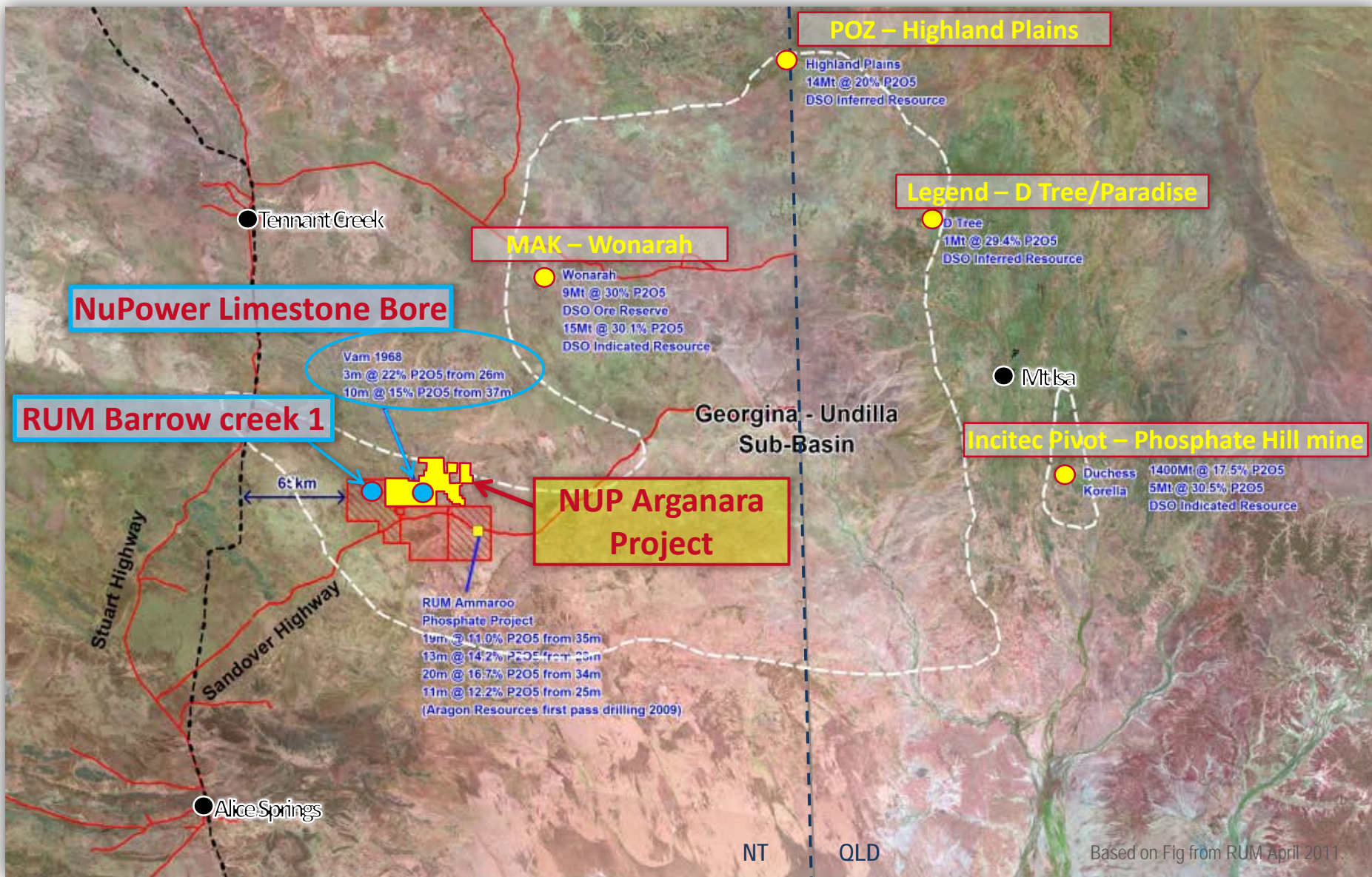


At **Warrabri** NT Geological Survey reported cuttings from a drill hole at Wycliffe Well that assayed 3m @ 2.2% P₂O₅ from 3m.

Prospective Chabalowe Formation may be present over a strike length of up to 80km with a potential width of 12km. Surface exploration is planned for later in 2011.

Phosphate in the Georgina Basin, NT and QLD

Phosphate in the Georgina



Phosphate in the Georgina

Incitec Pivot's:

Duchess/Phosphate Hill: Production - 2008-09 - 1.958Mt (Geoscience Australia)

Krucible Metals Ltd:

PMH South (near Incitec Pivot): DSO - Indicated Resource of 5 million tonnes at 30.5% P₂O₅

Legend:

D Tree: DSO - Inferred Resource of 1 million tonnes at 29.4% P₂O₅

Combined: Inferred Resource of 1 billion tonnes at 16% P₂O₅

MineMakers: (ASX:MAK)

Wonarah: DSO - Ore Reserve of 9 million tonnes at 30% P₂O₅

Wonarah: DSO - Indicated Resource of 15 million tonnes at 30.1% P₂O₅

Wonarah: Indicated Resource of 1258 million tonnes at 12% P₂O₅

Phosphate Australia: (ASX:POZ)

Highland Plains: DSO - Inferred Resource of 14 million tonnes at 20% P₂O₅ cut off of 15% P₂O₅

Highland Plains: Inferred Resource of 56 million tonnes at 16% P₂O₅

Rum Jungle: (ASX:RUM)

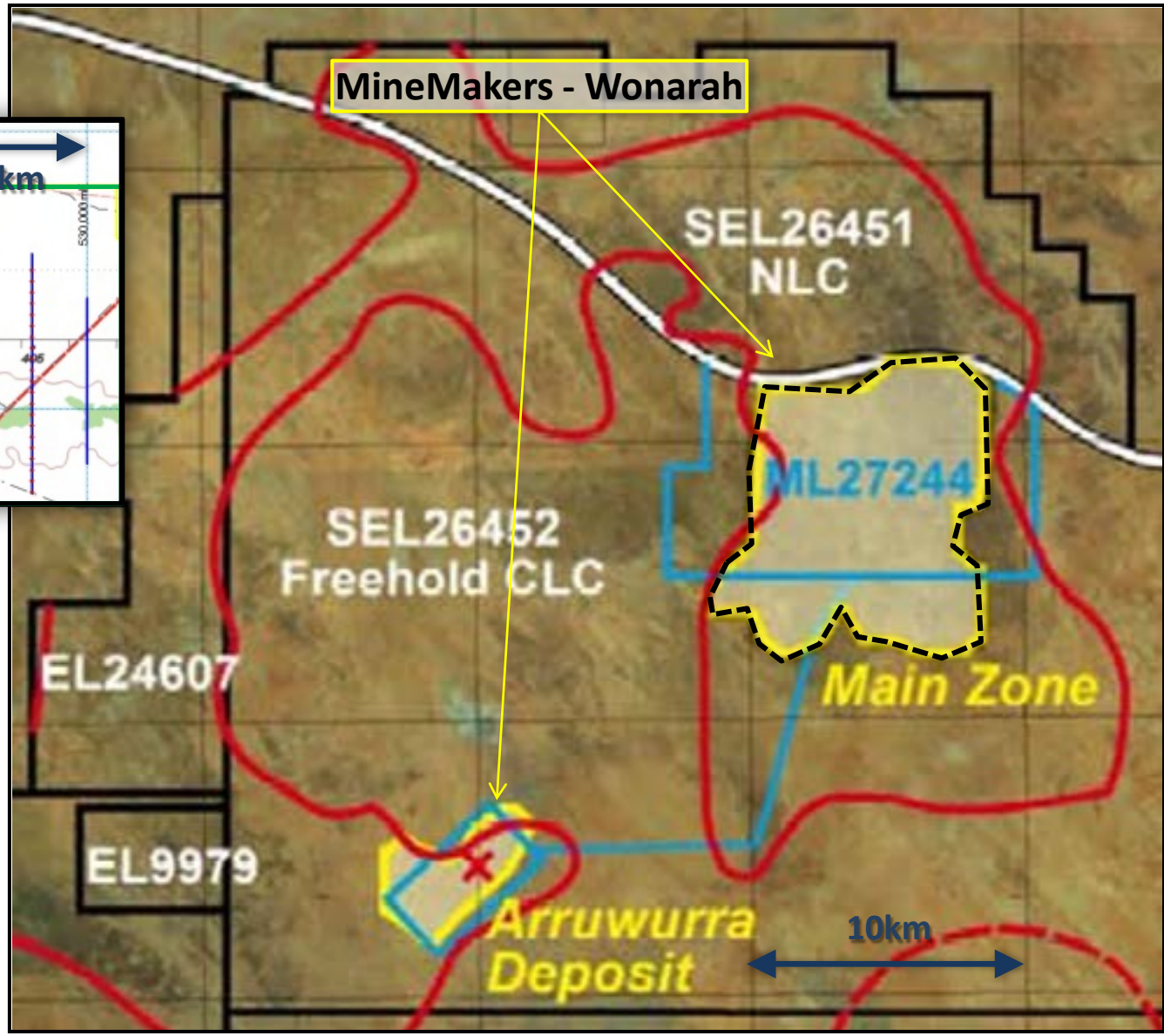
Over 10,000m drilling completed, many intersections above 30% P₂O₅

NuPower Aiming for a +500mt resource with a significant DSO component.

(Information compiled from public sources including: Internet and company ASX releases)

Phosphate - Size does Matter

NuPower Arganara Project



MineMakers Wonarah billion tonne resource footprint transposed onto NuPower's Arganara Tenement adjacent to Rum Jungles, Barrow Creek 1 project.

Phosphate in the Georgina

Phosphate Prices

Rock phosphate prices have continued to increase over the previous quarter. Most recent data indicates that OCP (the state-owned producer of Morocco) is achieving in excess of US\$160/t Free On Board (FOB) for the benchmark product of around 31% P₂O₅ to markets in Europe and Brazil. Since the end of the quarter, higher grade rock phosphate product from Jordan (32 to 34% P₂O₅) has been sold into the Indian market at around US\$200/t Cost And Freight (CFR). (Phosphate Australia April2011, ASX:POZ)



Phosphate, Paradise South – Legend.

NuPower – Proposed Work Plan, July to December 2011

July: Planning and approvals CLC and NT Government

August: Phase 1 drilling – Arganara ~ 6000m

September: Exploration drilling Lucy Creek & Warrabri, results
Arganara, phase 2 drilling Arganara.

October: Strangways REE, additional phosphate drilling

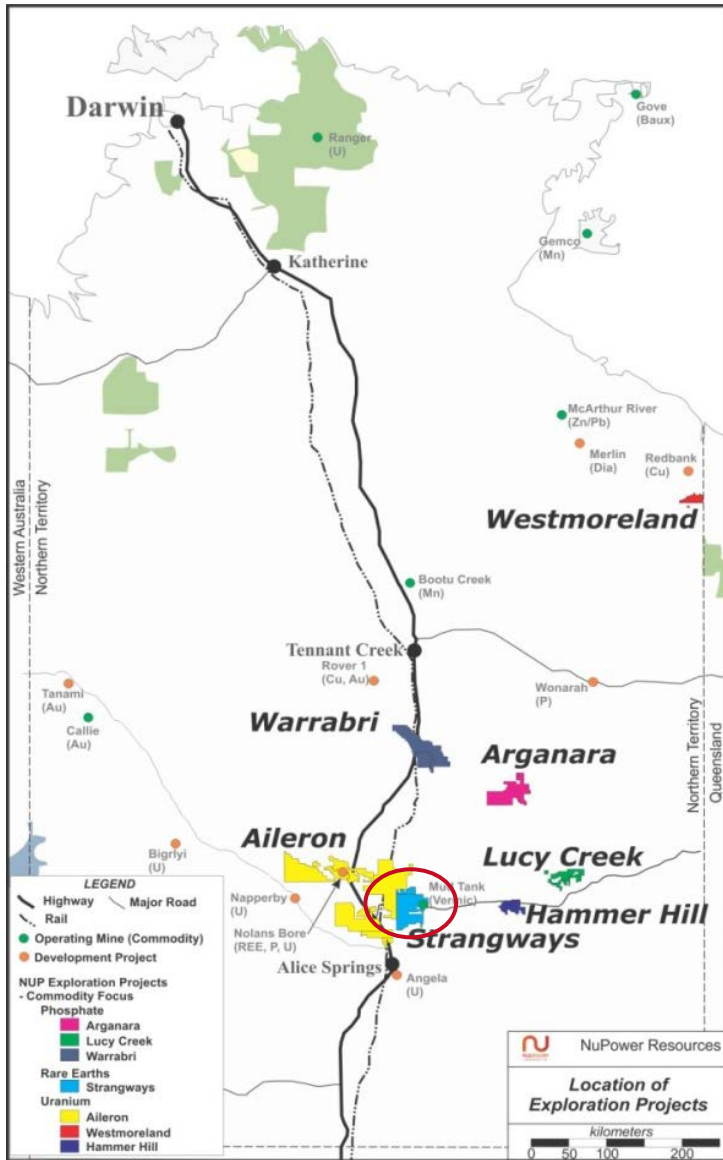
November: Results and Interpretation

December/January 2012: Assessing Resource Potential.

Appendix A – NuPower's Rare Earth (REE) & Uranium Projects

- Strangways (REE)
- Westmoreland - Eva – Cobar (U)
- Aileron (Channel U)

Strangways – Rare Earths



The **Strangways REE Project** comprises two Joint Venture titles SEL25055 Strangways and SEL25056 Bleechmore, and two NuPower titles EL26376 Mueller Creek and ELA28610 Mt Bleechmore. Mineralisation is associated with carbonatites and pegmatites within the high grade Strangways Metamorphic Complex.

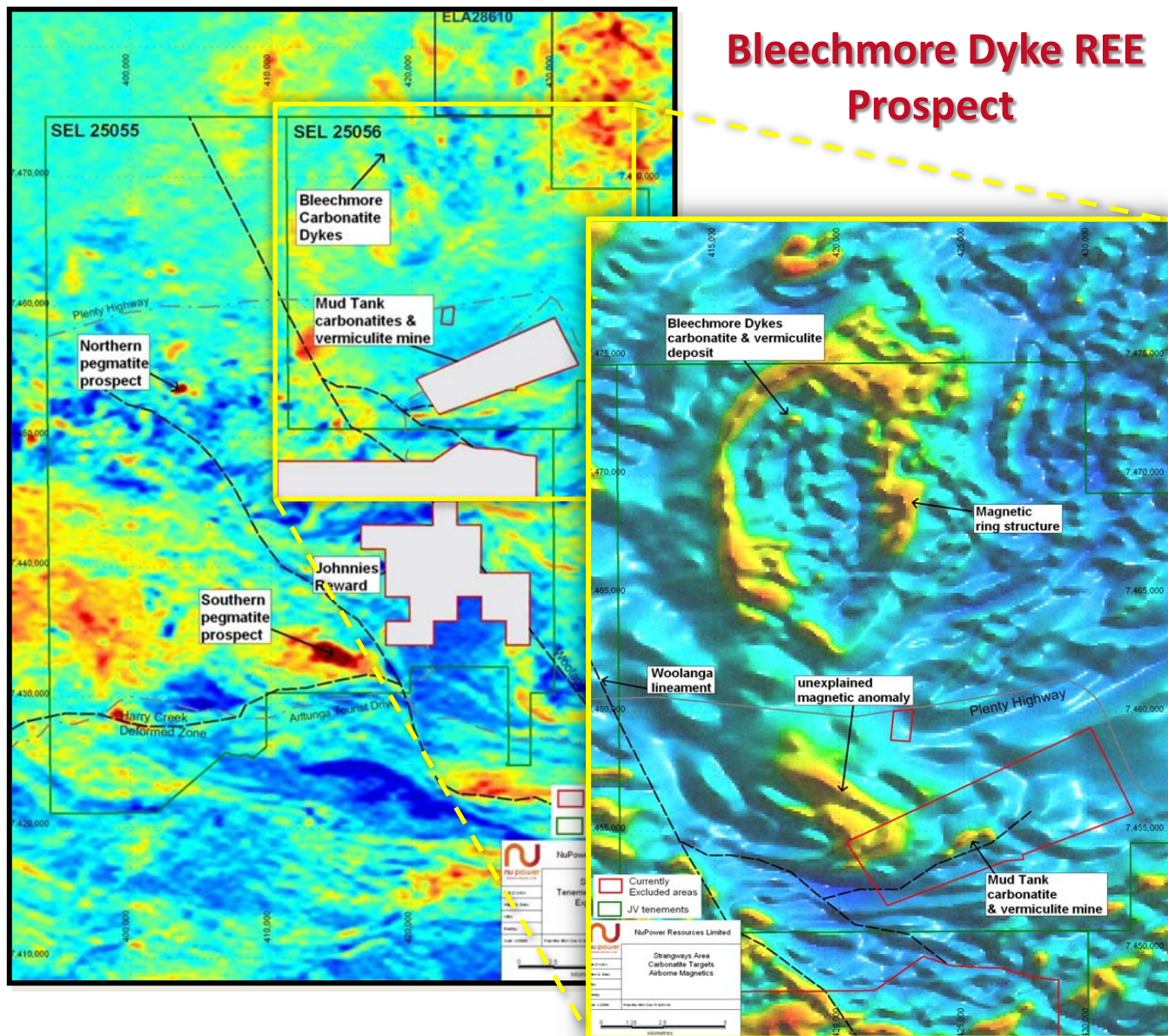
The Bleechmore Dykes consist of four carbonatite dykes, up to 20m wide and over 200m. Historically 274 shallow holes were drilled at this prospect for vermiculite, assaying for REE was non-existent to sporadic, only a few samples were assayed for a full suite of elements. Most drill samples assayed showed elevated levels of Ce and or La, including 20m @ 2340ppm Cerium (Ce), 832ppm Lanthanum (La) and 15m @ 1540ppm Cerium (Ce), 860ppm Lanthanum (La) with a maximum Cerium (Ce) assay of 0.935%.

A limited number of surface rock samples from here have been assayed for REE, the best results being 2880ppm Cerium (Ce), 1460 Lanthanum (La), 1220 Neodymium (Nd), 318 Praseodymium (Pr), 241 Samarium (Sm), 12.8 Ytterbium (Yb), 59.7 Europium (Eu), 128 Gadolinium (Gd), 78 Dysprosium (Dy), equivalent to 0.64% REE.

NuPower will continue to assess this interesting project through surface exploration and mapping, rock chips and possibly shallow drilling later in 2011.

Strangways – Rare Earths

Bleechmore Dyke REE Prospect



New discovery of rare earth mineralisation

Two confirmed REE mineralisation models

- Pegmatites
- Carbonatites

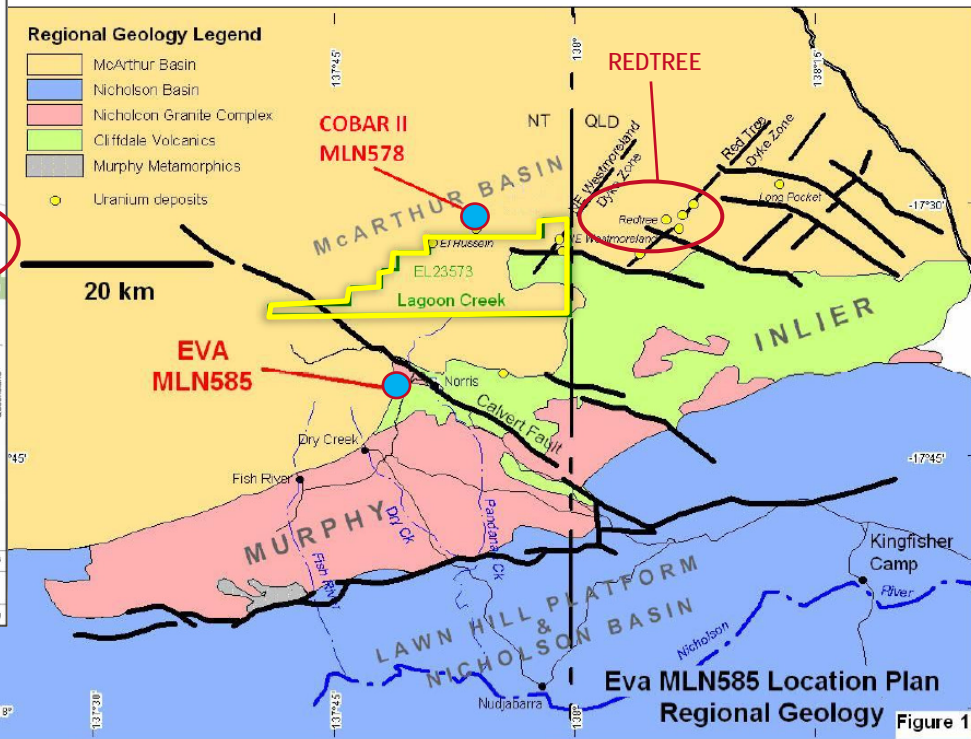
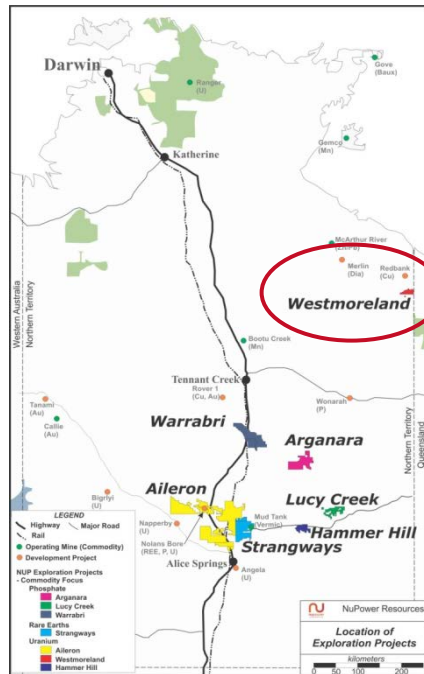
Two large clusters of REE enriched pegmatites discovered

Limited reconnaissance mapping & rock chip sampling to date

22 rock chip samples

- Average REE 0.45%
- Maximum REE 0.93%

Westmoreland Uranium



Large prospective region, **Lagoon Creek JV EL** plus **Eva** and **Cobar** mining leases

Laramide's **Redtree** Project in QLD, 35Mlbs U_3O_8

Many prospects have only had surficial exploration to date, little drilling.

Prospective for:

- Redtree (Laramide TSX:LAM)
- Ranger Unconformity
- Eva, new style

Eva Uranium JORC Resource

Category	Tonnes	Grade U_3O_8	U_3O_8 Tonnes	U_3O_8 M Lbs
Inferred	105,300	0.05%	60	0.13
Indicated	430,500	0.14%	590	1.30
Total	535,800	0.12%	650	1.43

using a 0.02% U_3O_8 cut off.

Eva Gold JORC Resource

Category	Tonnes	Grade Au	Au kg	Au Oz
Inferred	14,000	3.07g/t	40	1400
Indicated	87,600	3.88g/t	340	10,900
Total	101,600	3.77g/t	380	12,300

using a 1.2 g/t Au cut off.



Westmoreland Uranium

Lagoon Creek Project – JV

The Lagoon Creek EL covers the SW strike extension of the NE Westmoreland dyke zone from Qld. The project is a 50/50 JV with Lagoon Creek Resources (100% owned by Laramide) operators of the joint venture.

NE Westmoreland Drill Results

NEWM204

4m at 0.21% U₃O₈ from 124m ,

NEWM222

2m at 0.10% U₃O₈ from 75m

NEMW205

1.5m at 0.19% U₃O₈ from 64.75m

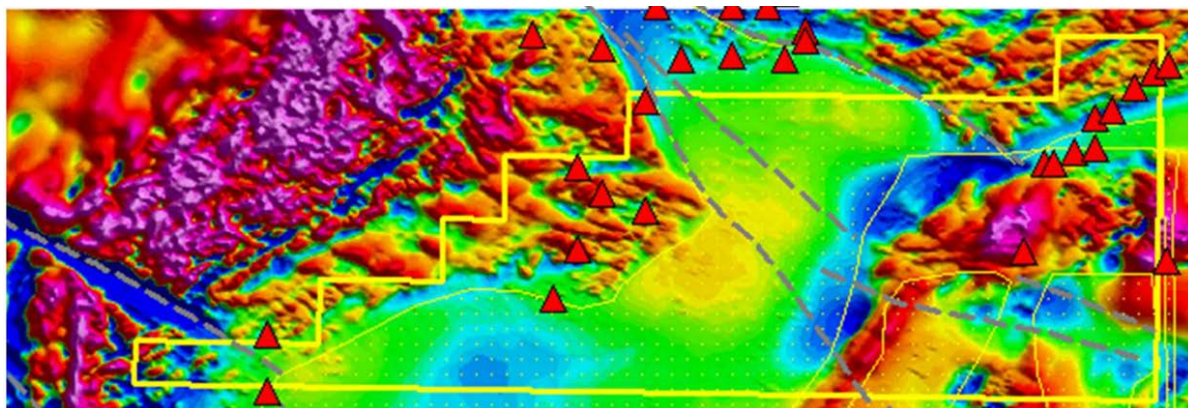
NEWM212

4.5m at 0.10% U₃O₈ from 120.75m

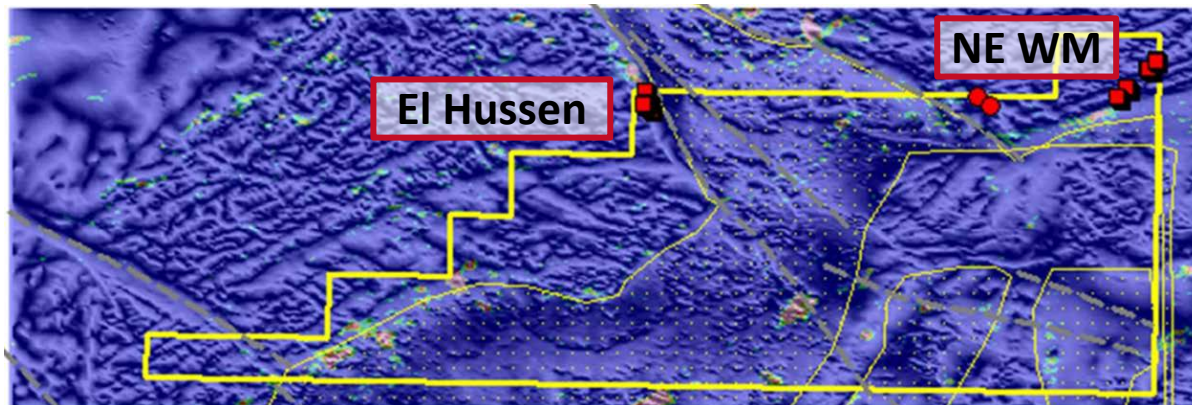
NEWM231

2.0m at 0.04% U₃O₈ from 60.25m

Uranium Prospects/Occurrences



Drill Hole Locations



El Hussen

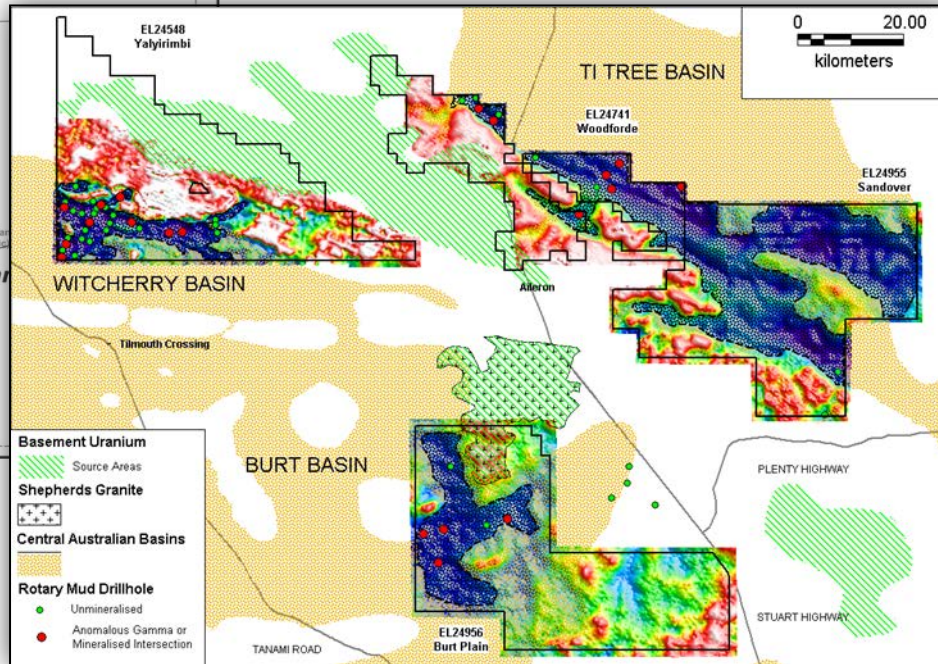
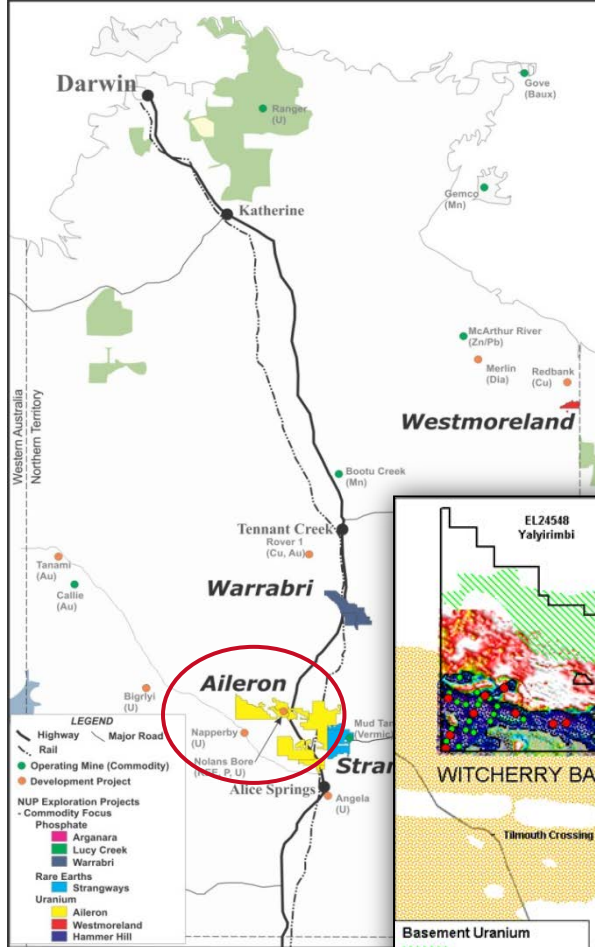
EHS7 5.5m at 0.02%U₃O₈ from 10.95m

EHS7in 3.5m at 0.02% U₃O₈ from 17.35m

Aileron – Channel Uranium

AILERON PROJECT

The Aileron Project is primarily held for its channel uranium potential. The area comprises 14 exploration licenses covering 8498 square kilometers in the Aileron region centred 100km north of Alice Springs and bisected by the Stuart Highway. Three are held by Arafura in which NuPower holds the uranium interest, two are held by NuPower in which NuPower has only the uranium interest while Arafura holds the remaining metals, eight are held by NuPower with interests in all metals and there is one joint venture licence.



Model validated with anomalous uranium in drilling

Identification of 3 mineralised channel positions

- Yalyirimi
- Burt Plain
- Woodforde

Wide drill spacing >3-5km