



Northwest



AGM Presentation

29 November 2011

Northwest Resources Limited • ASX: NWR • www.nw-resources.com.au

Important notice

Northwest Resources Limited (“Company”) has prepared this presentation based on information available to it at the time of preparation.

Forward Looking Statements

Certain statements in this presentation, including statements regarding the future financial or operating performance of the Company and its projects, and estimates, projections and assumptions in respect of gold and antimony production, metal prices, operating costs, capital expenditures, mineral reserves, mineral resources, anticipated grades and recovery rates constitute forward-looking statements. Forward-looking statements are necessarily based upon a number of estimates and assumptions related to future business, economic, market, political, social and other conditions that, while considered reasonable by the Company, are inherently subject to significant uncertainties and contingencies. Many known and unknown factors could cause actual events or results to differ materially from estimated or anticipated events or results reflected in such forward-looking statements. Recipients of this presentation are cautioned that forward looking statements are not guarantees of future performance.

Disclaimer

The information, including all forward looking statements, in this presentation is provided expressly on the basis that the recipient will carry out its own independent inquiries into the information and make its own independent decisions about the affairs, financial position or prospects of the Company.

To the maximum extent permitted by law, none of the Company, its directors, employees, or agents, advisers, nor any other person accepts liability, including without limitation arising from fault or negligence on the part of any of them or any other person, for any loss arising from the use of this presentation or its contents or otherwise arising in connection with it.

No offer of securities

This presentation is not an offer, invitation, solicitation or other recommendation with respect to the subscription for, purchase or sale of any security in the Company and neither this presentation nor anything in it shall form the basis of any contract or commitment whatsoever.

Competent Person Statement

The information in this presentation relating to exploration results is based on information compiled by Mr. Charles Gillman, who is a Member of Australian Institute of Geoscientists. Mr. Gillman is a full-time employee of the Company and has sufficient experience which is relevant to the style of mineralisation and type of deposit under consideration and to the activity which he is undertaking to qualify as a Competent Person as defined in the 2004 Edition of the “Australasian Code for Reporting of Exploration Results, Mineral Resources and Ore Reserves”. Mr. Gillman consents to the inclusion in this presentation of the matters based on his information in the form and context in which it appears.

Presentation outline

1

• Northwest

2

• Gold & Antimony

3

• Nullagine Gold & Antimony Project

4

• Camel Creek Trend

5

• Blue Spec Shear

Project snapshot

Northwest controls the Nullagine Gold & Antimony Project in WA

Within the Project are the high-grade Blue Spec Shear gold-antimony deposits and the moderate grade Camel Creek Trend gold deposits



Camel Creek Trend

- Gold production in early 2015 from non-core Camel Creek open pit deposits through announced production joint venture with Millennium Minerals



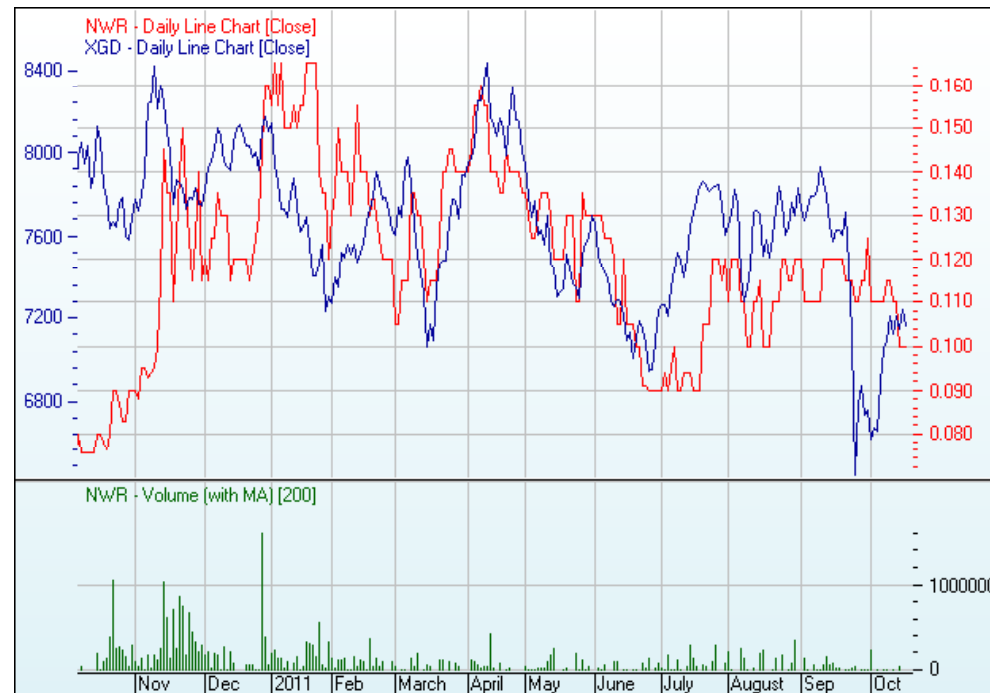
Blue Spec Shear

- Currently developing the core Blue Spec Shear deposits into one of the highest grade underground gold mining centres in Australia

Corporate snapshot

Northwest is an undervalued gold stock

ASX code: NWR	
Shares on issue:	130.9m (no options)
12 month range:	8c - 17c
Market cap:	\$14.4m (@ 11c)
Shareholders:	~1,100 (top 20: ~65%)
Cash:	\$3.75m *
Current JORC resources	
Gold:	402,000 oz
Antimony:	9,000 t
Gold Eqv:	481,000 oz
EV/oz:	\$39



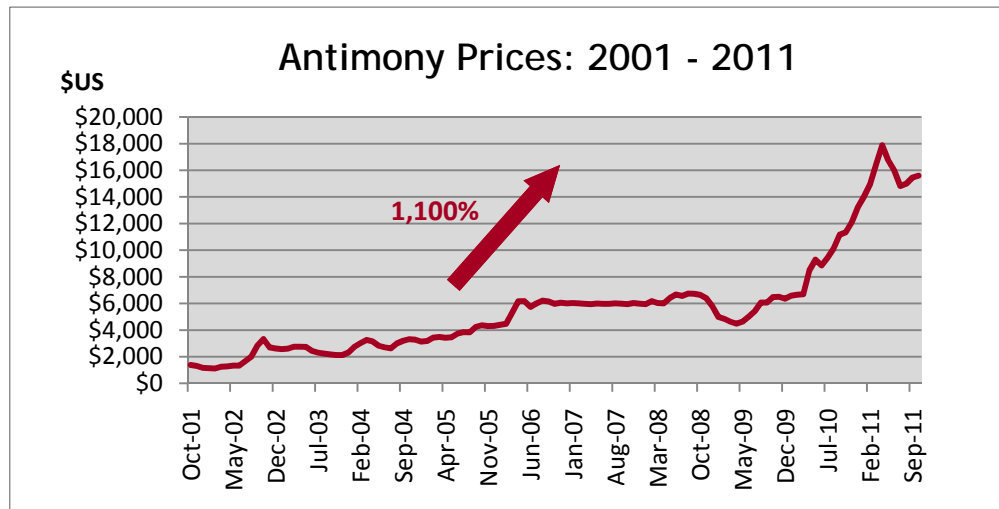
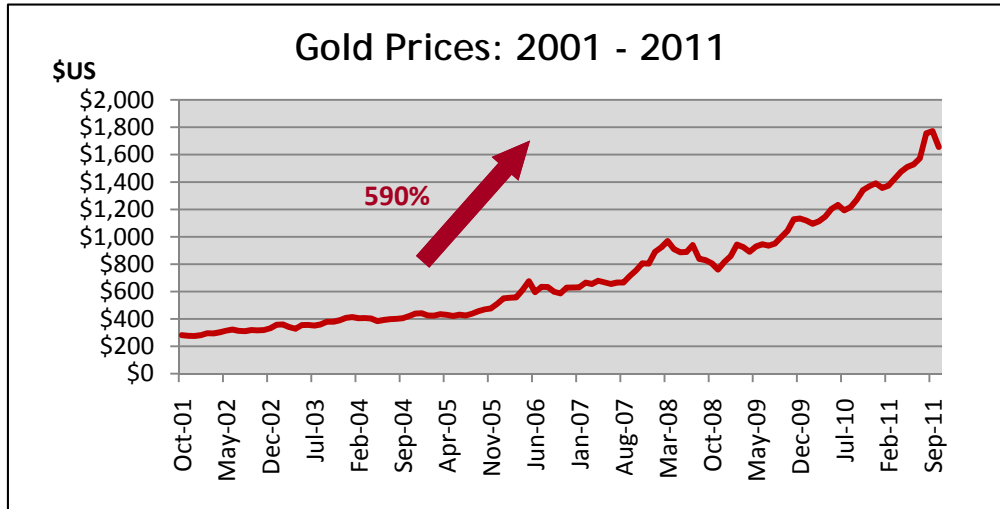
Northwest 12 month share price compared with the S&P/ASX All Ordinaries Gold Index

* As at 30 June and includes value of Camel Creek JV equalisation payments



- 1 • Northwest
- 2 • Gold & Antimony
- 3 • Nullagine Gold & Antimony Project
- 4 • Camel Creek Trend
- 5 • Blue Spec Shear

Gold & Antimony



Sources: www.metalprices.com (18 Oct 2011)

Strong outlook for gold



EU economic and regional geopolitical concerns

- ✘ EU sovereign debt concerns (Greece, Italy, Spain, Ireland)
- ✘ North African and Middle Eastern political turmoil
- ✘ Driving safe haven investment

US economic and inflationary concerns

- ✘ Federal Reserve quantitative easing (printing money)
- ✘ S&P downgrade of US national debt (\$14 Trillion)
- ✘ No recovery for US dollar in sight



Investment demand

- ↗ India and China driving consumer demand for gold jewellery
- ↗ Gold bars and coins owned by individuals accounted for 19% of world's gold stocks in 2009
- ↗ Government reserves accounted for only 16% of gold stocks

Strong outlook for antimony



\$1.8 billion annual market size

- Largest use as flame retardant in clothing & construction industry
- Also used in manufacturing PET plastic bottles
- New uses in flash memory devices for computers, mobiles & USB devices

Reduced supply driving sustainable price

- ✗ Major Chinese mines will be depleted in 4 years (60% of world's reserves)
- ✗ Chinese government production quota since 2009 (along with rare earths & tungsten)
- ✗ Scramble for non-China sources of supply



A strategic metal

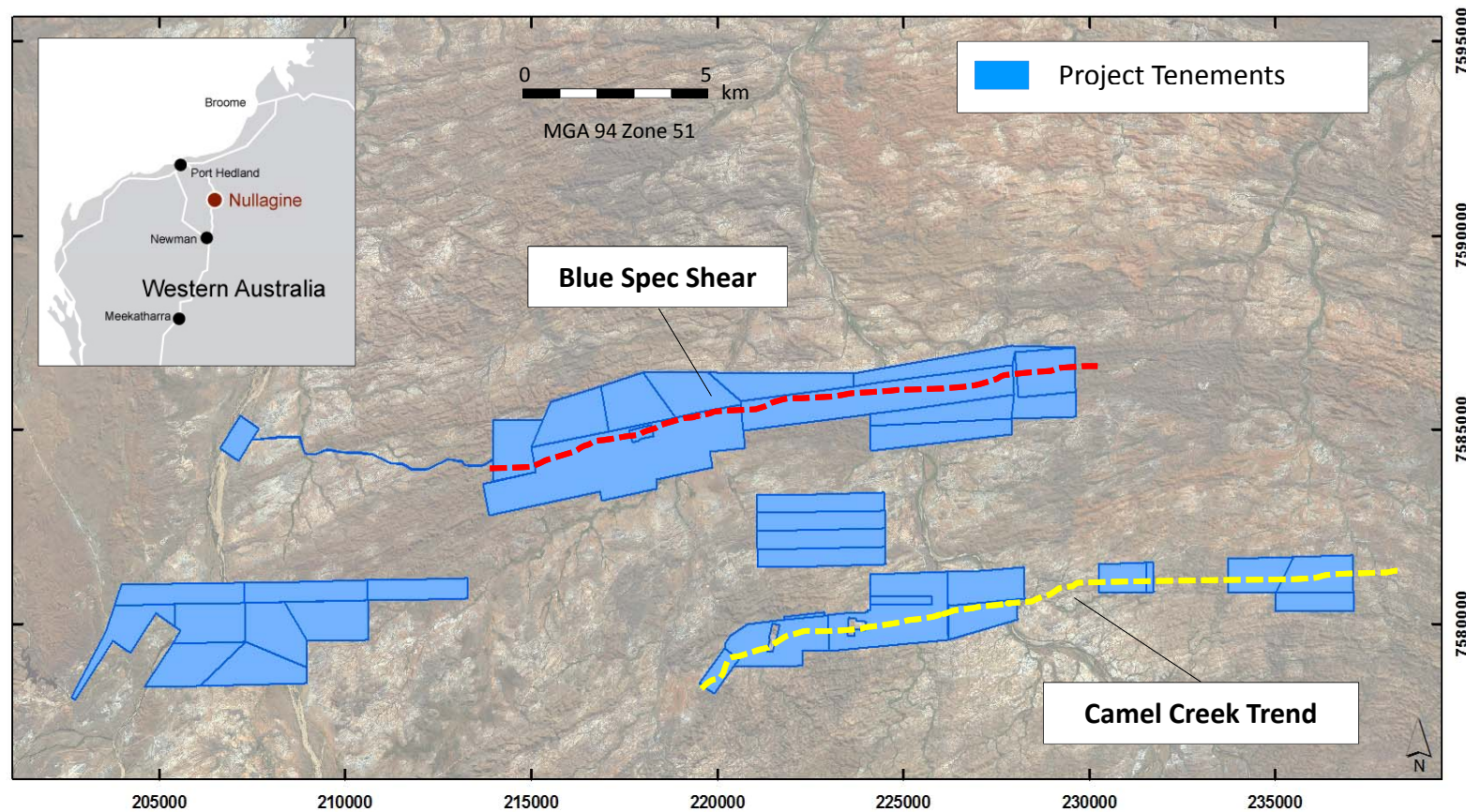
- No commercial substitute for antimony
- EU declared antimony 1 of 14 technology metals critical to European industry and facing supply challenges in 2010
- China declared antimony a strategic metal in 2009



- 1 • Northwest
- 2 • Gold & Antimony
- 3 • Nullagine Gold & Antimony Project
- 4 • Camel Creek Trend
- 5 • Blue Spec Shear

Nullagine Gold & Antimony Project

Nullagine is emerging as a new mining centre only 2 hours by road from Newman



Nullagine Gold & Antimony Project

The Nullagine Au/Sb Project hosts separate low grade and high grade project areas



Camel Creek Trend

- Multiple low grade deposits
- Gold only
- Open pit development
- Current JORC mineral resource - 46,000 oz @ 2.7 g/t



Blue Spec Shear

- Multiple high-grade deposits
- Gold and antimony
- Underground development
- Current JORC mineral resource at Blue Spec & Golden Spec - 329,000 oz @ 20.7 g/t & 9,000 t Sb

Nullagine Gold & Antimony Project

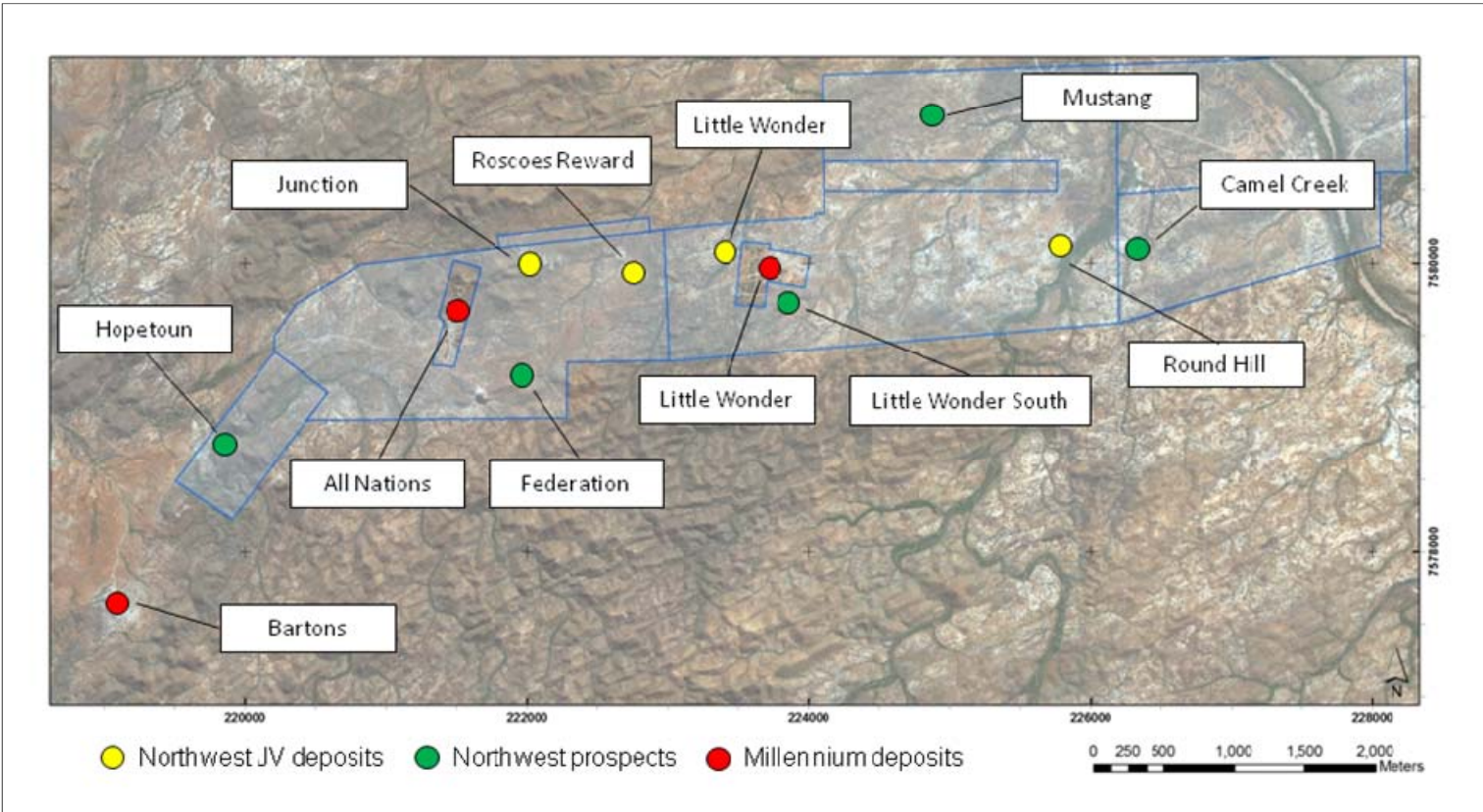




- 1 • Northwest
- 2 • Gold & Antimony
- 3 • Nullagine Gold & Antimony Project
- 4 • Camel Creek Trend
- 5 • Blue Spec Shear

Camel Creek Trend

Near surface gold deposits with excellent potential for further discoveries



Camel Creek Joint Venture

The JV ensures Northwest transitions from explorer to producer status



Partner - Millennium Minerals (ASX: MOY)

- Constructing 1.5 MTPA gold project at Nullagine
- Financing complete - production in Q3 2012
- Camel Creek deposits a natural fit with MOY's project

Joint Venture

- Signed and announced
- 50/50 JV to be operated by MOY
- JV mining to start in early 2015

Revenue

- Target JV production from current deposits ~40,000 oz
- Anticipated cash costs ~\$750 per oz
- No up-front capex contribution from Northwest
- Exploration will add new deposits to JV

Exploration Upside

Northwest is confident that further exploration will add deposits to the JV



Exploration upside

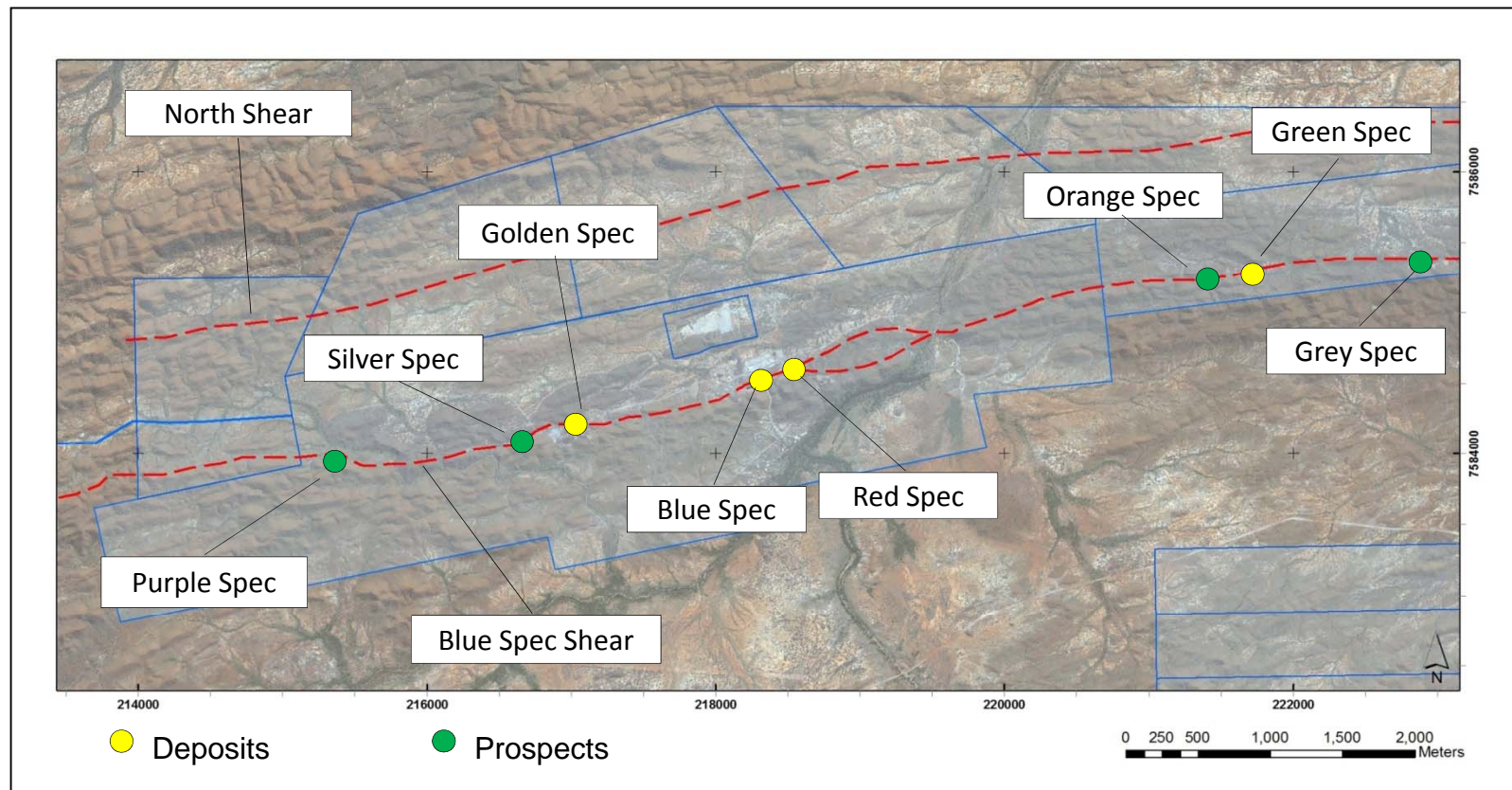
- Drilling programme at JV deposits currently underway to test extensions to deposits
- Reserve estimates for JV deposits expected in 2Q 2012
- Numerous prospects for follow-up drilling (Federation, Corsair, Mustang)



- 1 • Northwest
- 2 • Gold & Antimony
- 3 • Nullagine Gold & Antimony Project
- 4 • Camel Creek Trend
- 5 • Blue Spec Shear

Blue Spec Shear

Blue Spec & Golden Spec are some of the highest grade gold deposits in Australia

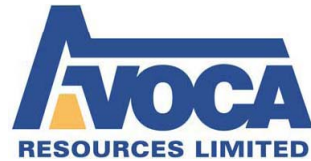


High grade narrow vein gold mining

Quality high grade narrow vein underground gold mines are company makers



Dominion
Mining



silverlake
RESOURCES



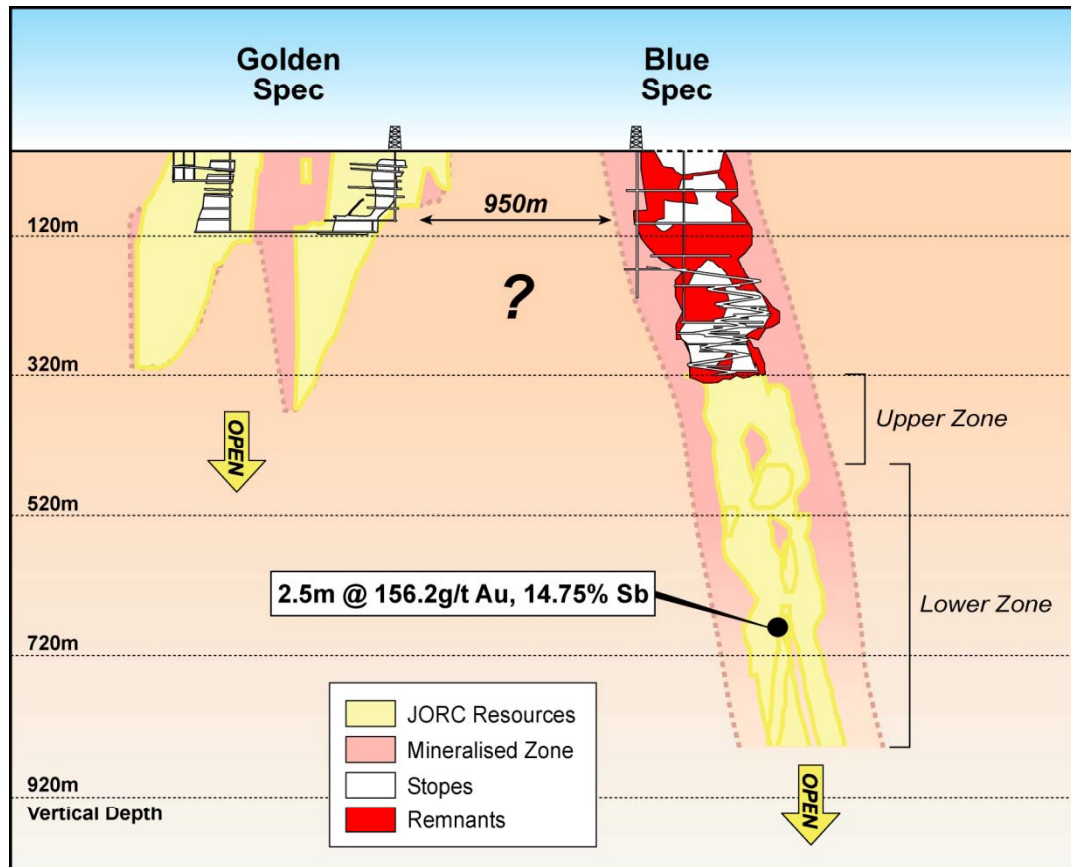
NORTHERN STAR
RESOURCES LIMITED

Successful narrow vein gold mines:

- Modest resources & reserves on start-up
- Mined ounces replaced by underground exploration drilling
- High-margin operations
- Huge value created for shareholders

Blue Spec - Golden Spec

Current mineral resource inventory of 329,000 oz @ 20.7g/t & 9,000t Sb at Blue Spec-Golden Spec is a robust platform for mining



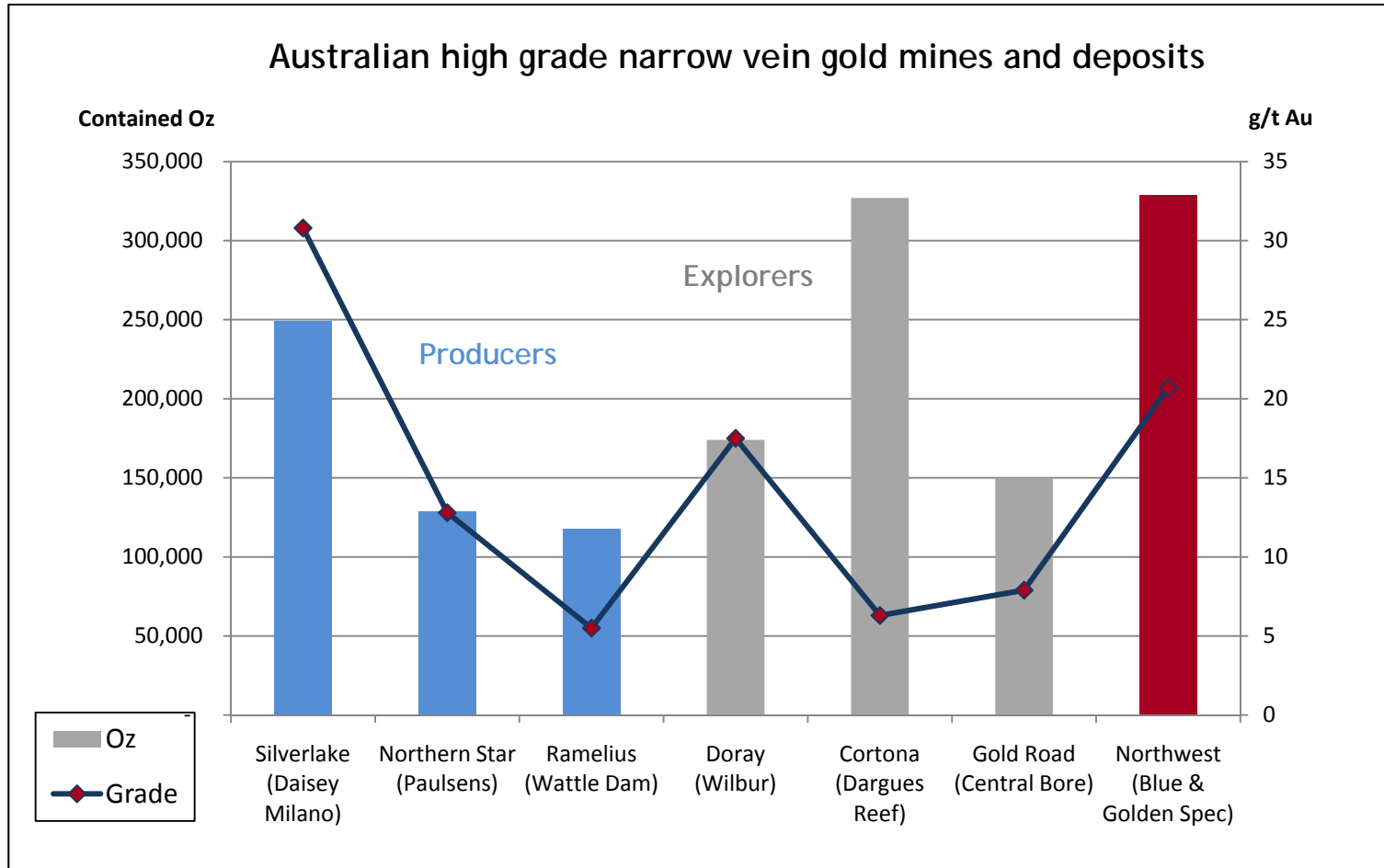
Blue Spec

- Upper Zone (320m to 440m)
122,000 oz @ 42.5 g/t Au
2,300 t Sb @ 2.61%
- Lower Zone (440m to 850m)
132,000 oz @ 17.5 g/t Au
3,200 t Sb @ 1.38%
- Av. widths - 2.5-4.0m

Golden Spec

- Surface to 320m
75,000 oz @ 8.5 g/t Au
2,300t Sb @ 0.84%
- Including 49,000 oz @ 18 g/t Au
- Av. widths 1.5-2.5m
- Both resource models estimated using minimum 2m minimum mining width

How does Blue Spec - Golden Spec compare



Source: Public reports

For producers graph shows JORC resources on commencement of production under current ownership

For explorers and Northwest graph shows current JORC resources

Blue Spec - Golden Spec potential

Excellent potential to expand Blue Spec-Golden Spec significantly

Blue Spec

- Lower Zone (440-850m) grade adversely affected by lower drilling density compared to Upper Zone
- Lower Zone intersections include bonanza 2.5m @ 156.2 g/t Au & 14.75% Sb from 715m down-hole
- Target mineralisation: Additional 250,000 - 280,000 oz from Lower Zone

Golden Spec

- "Specs" show remarkable plunge continuity
- Golden Spec could be defined down to Blue Spec depth (850m not closed off)
- Target mineralisation: Additional 110,000 - 140,000 oz at Golden Spec

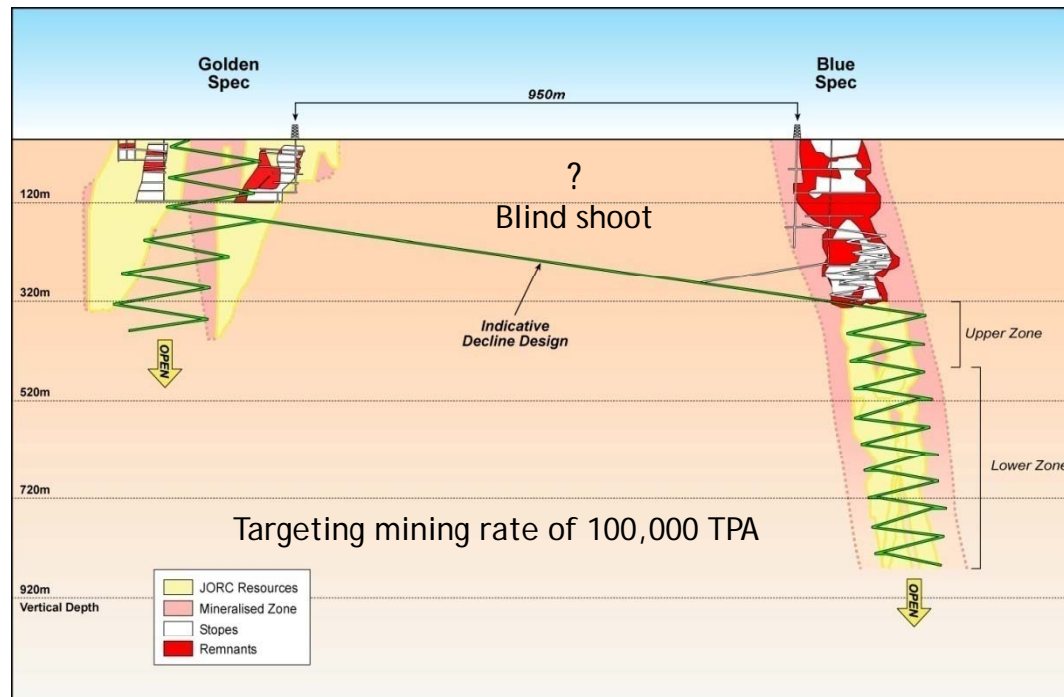
"New" Spec

- Potential to discover blind shoot(s) between Blue Spec and Golden Spec during development
- Target mineralisation: ???

Target mineralization is conceptual in nature and should not be construed as a mineral resource or reserve. It is based on a projection of known lodes and mineralization having regard to geological advice and it is uncertain if further exploration will result in the determination of a mineral resource. Northwest has estimated the target mineralization for Blue Spec and Golden Spec based on demonstrated plunge continuity and a straight line projection of opvm from the current JORC resources.

Combined operation

The combined development provides scale and operational flexibility



Blue Spec & Golden Spec

- Targeting over 1,200 OPVM in production (excluding Sb credits)
- Mines never previously operated together
- Lower risk due to previous mining experience
- Excellent exploration platform to explore for blind "Specs"

A focus on de-risking operations and minimising cap-ex



CIP treatment plant on site

Underground mining

- Introduce an experienced underground contractor to de-risk project
- Ongoing discussions with preferred underground contractors

Processing options

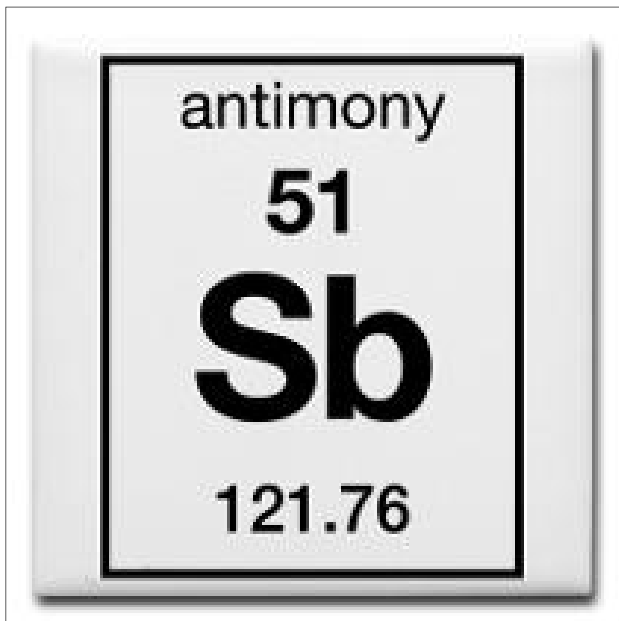
- Alternative processing options to minimise cap-ex being evaluated
- Refurbishing existing plant on site (rated to 100,000 TPA) or utilising Millennium's Minerals' plant to produce gold & Sb con
- Building a simple concentrator plant to produce a high value Au-Sb con

Infrastructure

- Potential to share project infrastructure with Millennium Minerals

Antimony's value to Northwest

Gold is the focus but antimony is a significant positive



By product of gold production

- Sb concentrate sales have potential to generate additional 10-15% revenue as a credit
- Antimony credits will drive low cash costs

Off-take potential

- Strong overseas off-take interest for Northwest Sb concentrate
- Discussions with interested parties continuing

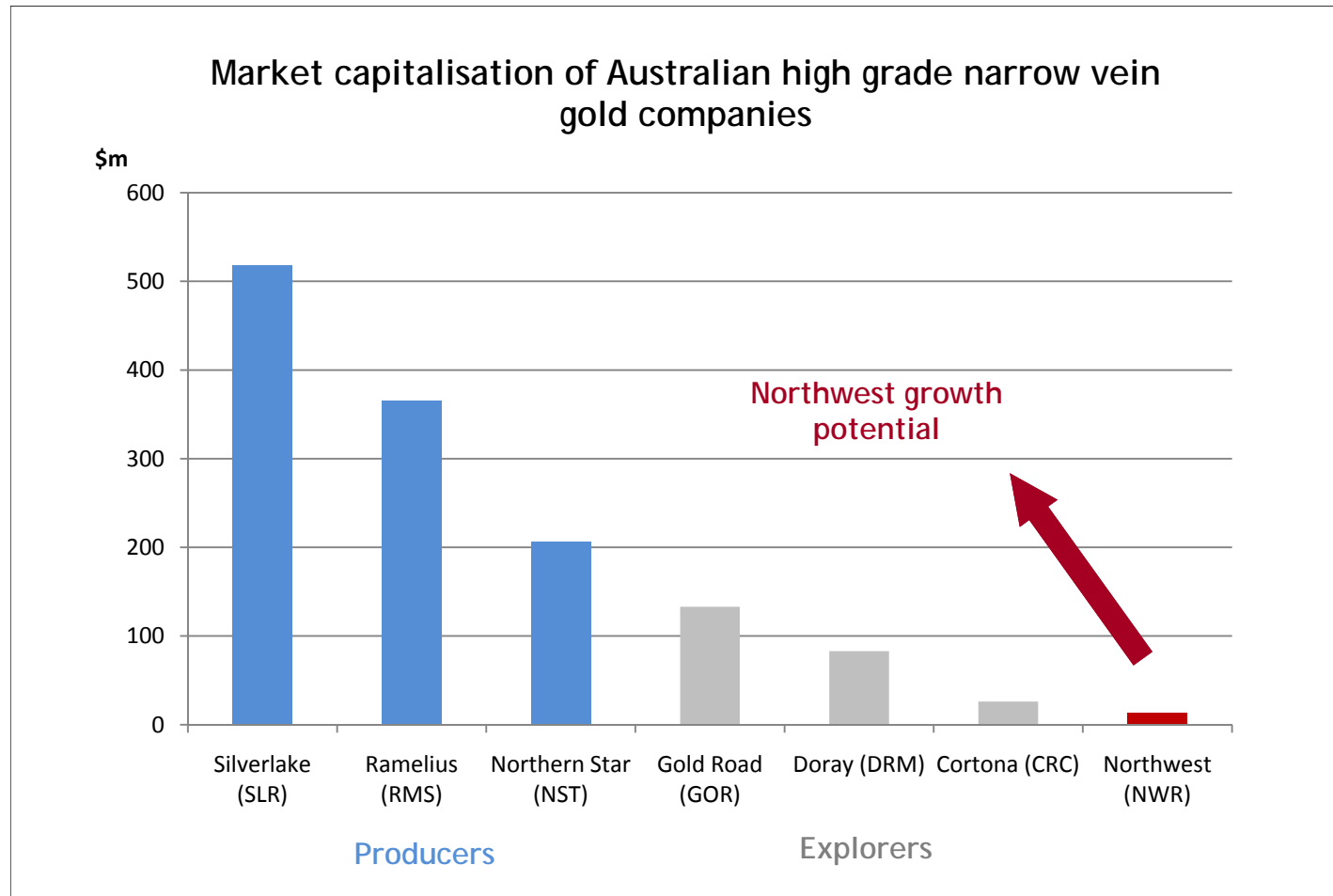
Metallurgical test work

- Diamond drilling programme to provide core samples for met test work has started
- Concentrate samples for discussions with off-take parties

Why invest in Northwest

- 1 Significantly undervalued compared to underground narrow vein gold peers
- 2 Gold production in early 2015 from Camel Creek JV underwrites future
- 3 Aiming for gold & antimony production from Blue Spec-Golden Spec in 2013
- 4 Blue Spec-Golden Spec will be a low risk, low capex & low cost operation

Why invest in Northwest



Source: ASX (18 Oct 2011)

The next 12 months

Steps towards achieving Northwest's goal of becoming a mid-tier gold producer in 2013

- More drilling at Camel Creek Trend and Blue Spec Shear to expand resource base
- Bring in underground mining partner for Blue Spec-Golden Spec operation
- Finalise acquisition of minority 35% in Nullagine Gold & Antimony Project
- Select optimum processing option for Blue Spec- Golden Spec operation
- Complete permitting for Blue Spec-Golden Spec operation





Northwest



Suite 8, Level 2
325 Pitt Street
Sydney NSW 2000

T: 02 9267 7661
F: 02 9267 7601
E: info@nw-resources.com.au