

29th November 2011



Oakland

RESOURCES

Annual General Meeting - Operations Update

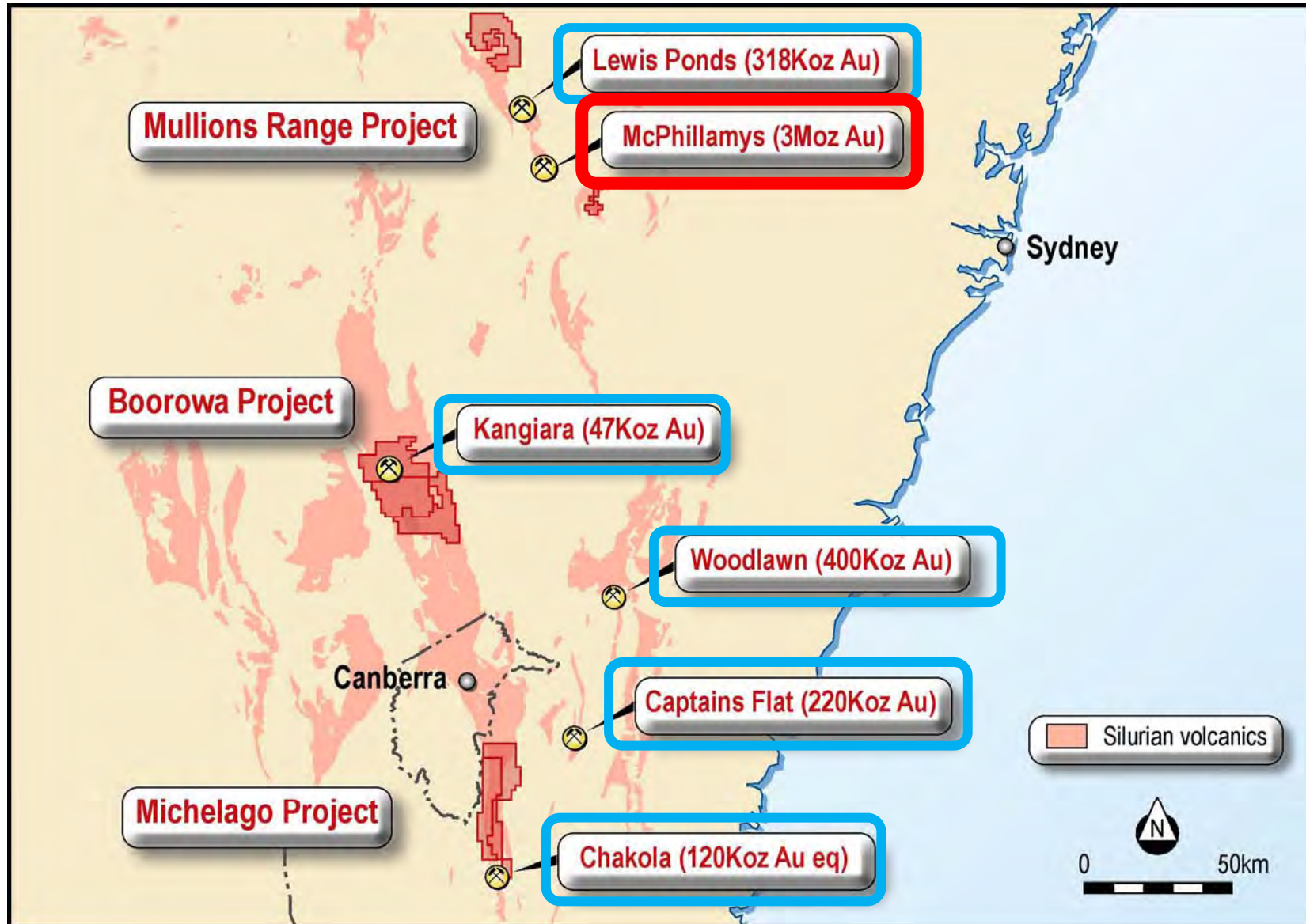
Oakland Resources



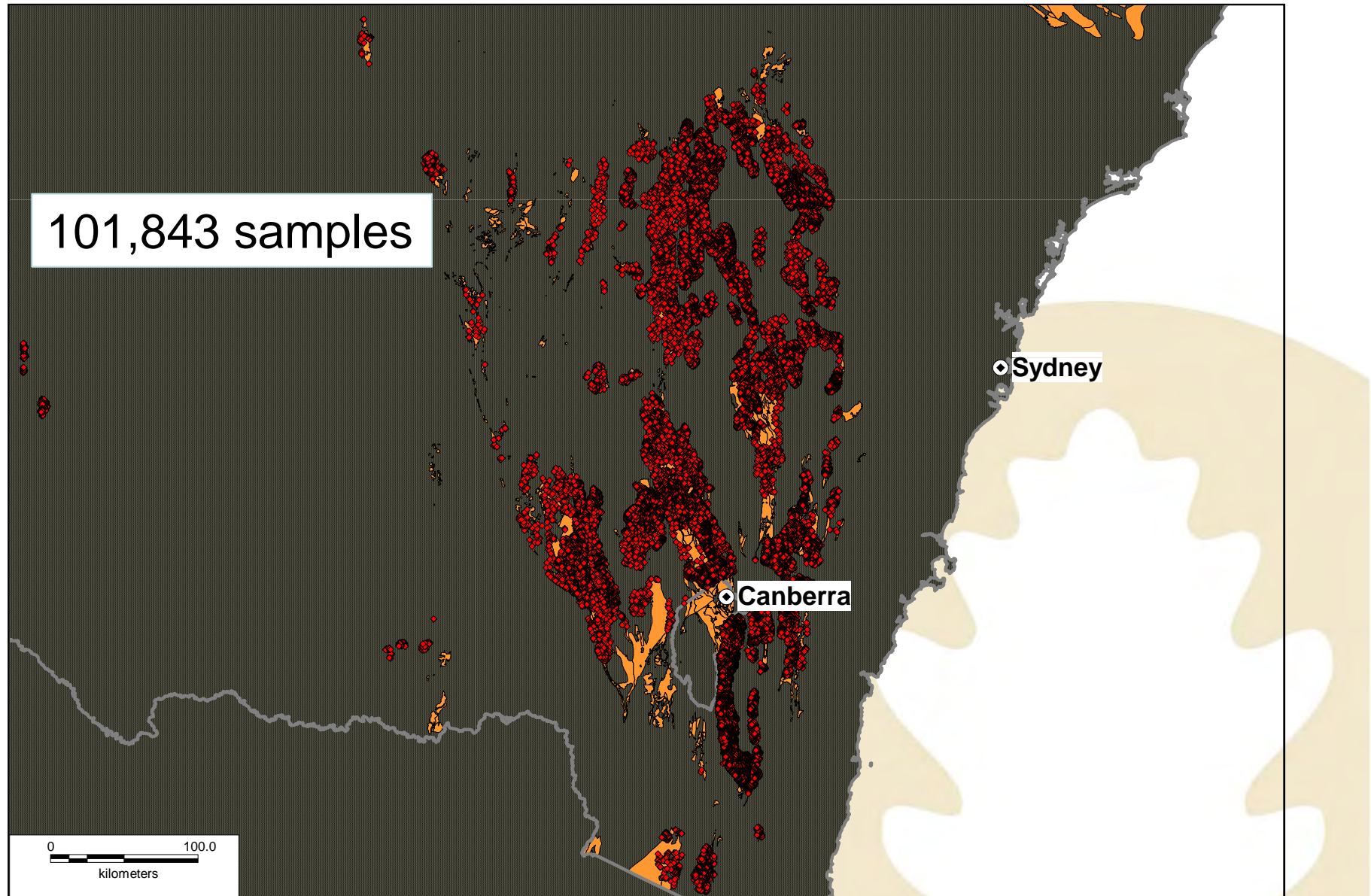
➤ **Key Performance Indicators – 2011**

- Drilling - 4,600m RC; 700m diamond core
 - Samples - 7,400 samples
 - **Fixed : Variable – 20 : 80**
 - Zero LTI, two incidents
-
- **Crosby**– Exceptional Gold soil target + Copper
 - **Billilingra** – Soils generated new drill targets
 - **Day Dawn** – Untested soils targets
 - **Spion Kop** – Copper-Gold target delineated

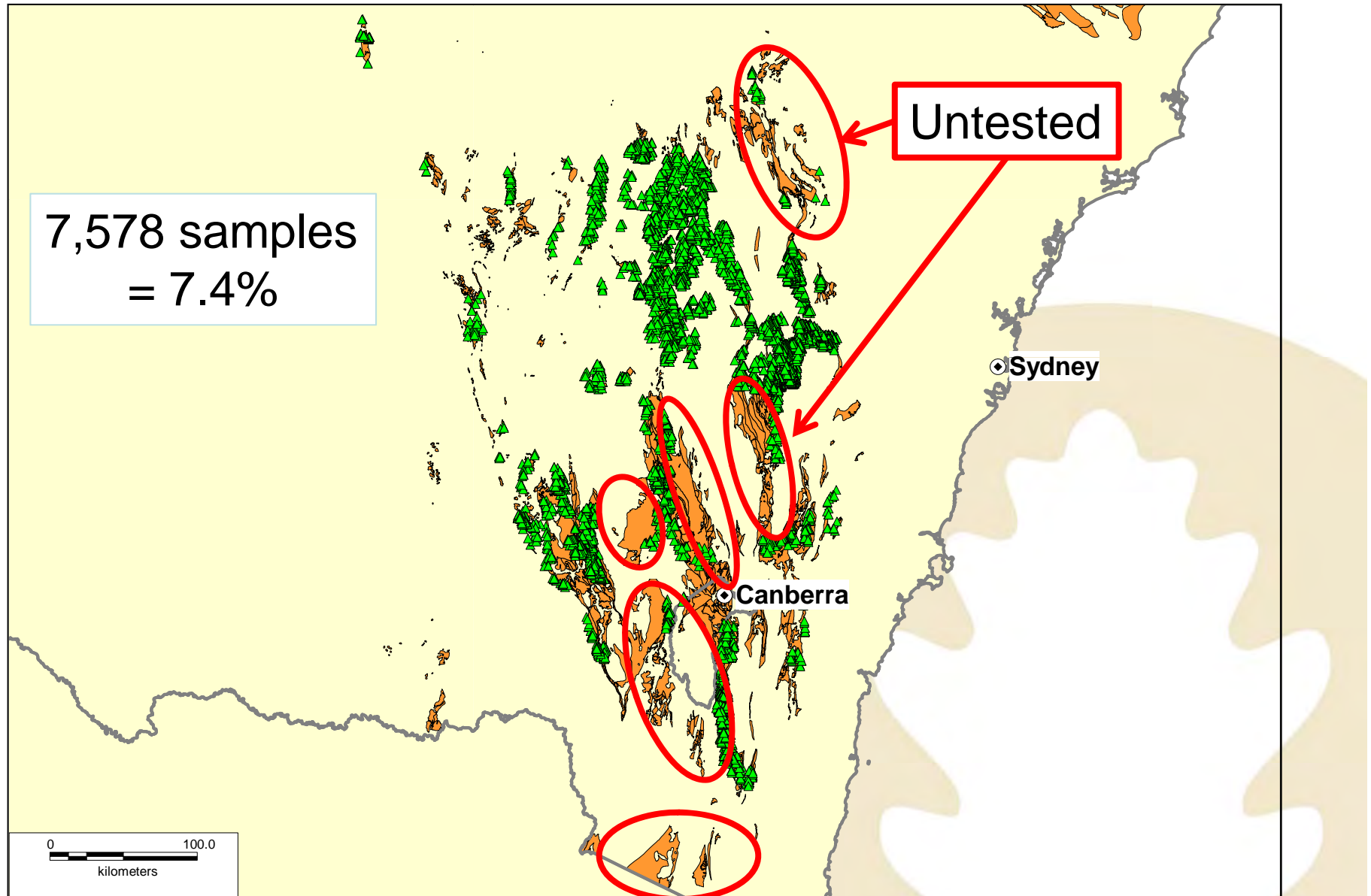
Lachlan “Base Metal” Deposits



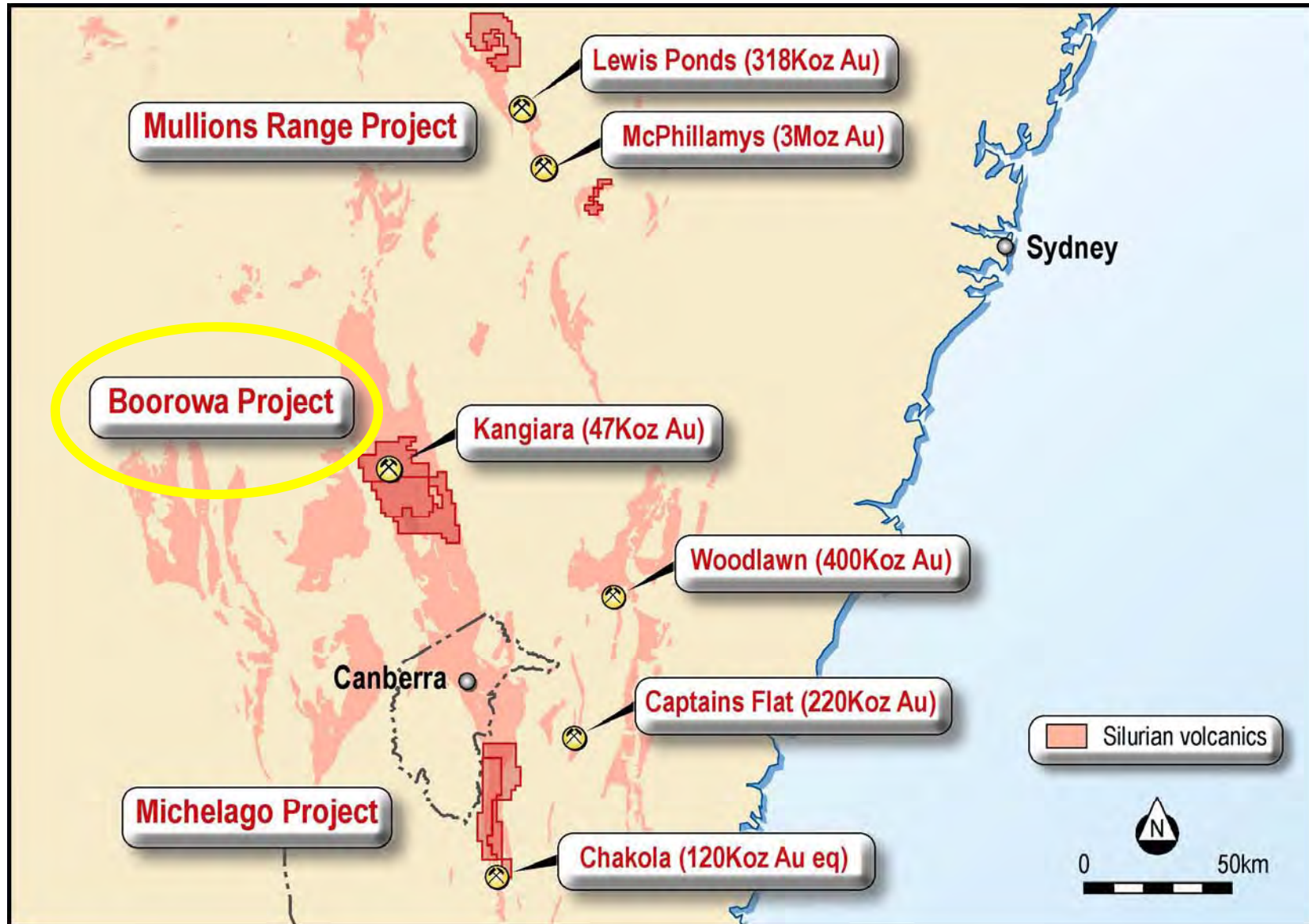
NSW Stream Sediments



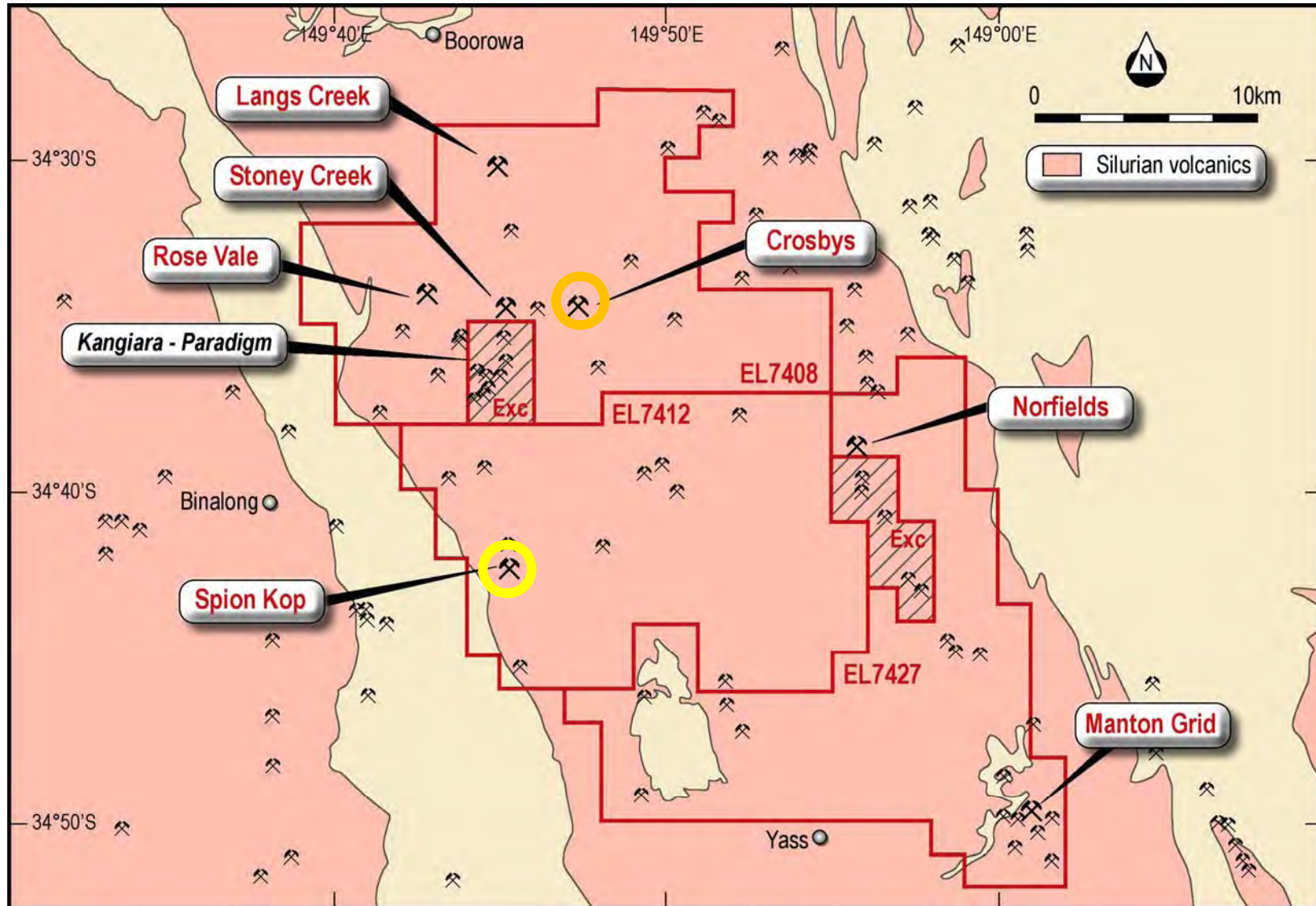
NSW Stream Seds - Au



Lachlan Gold Province



Boorowa Project



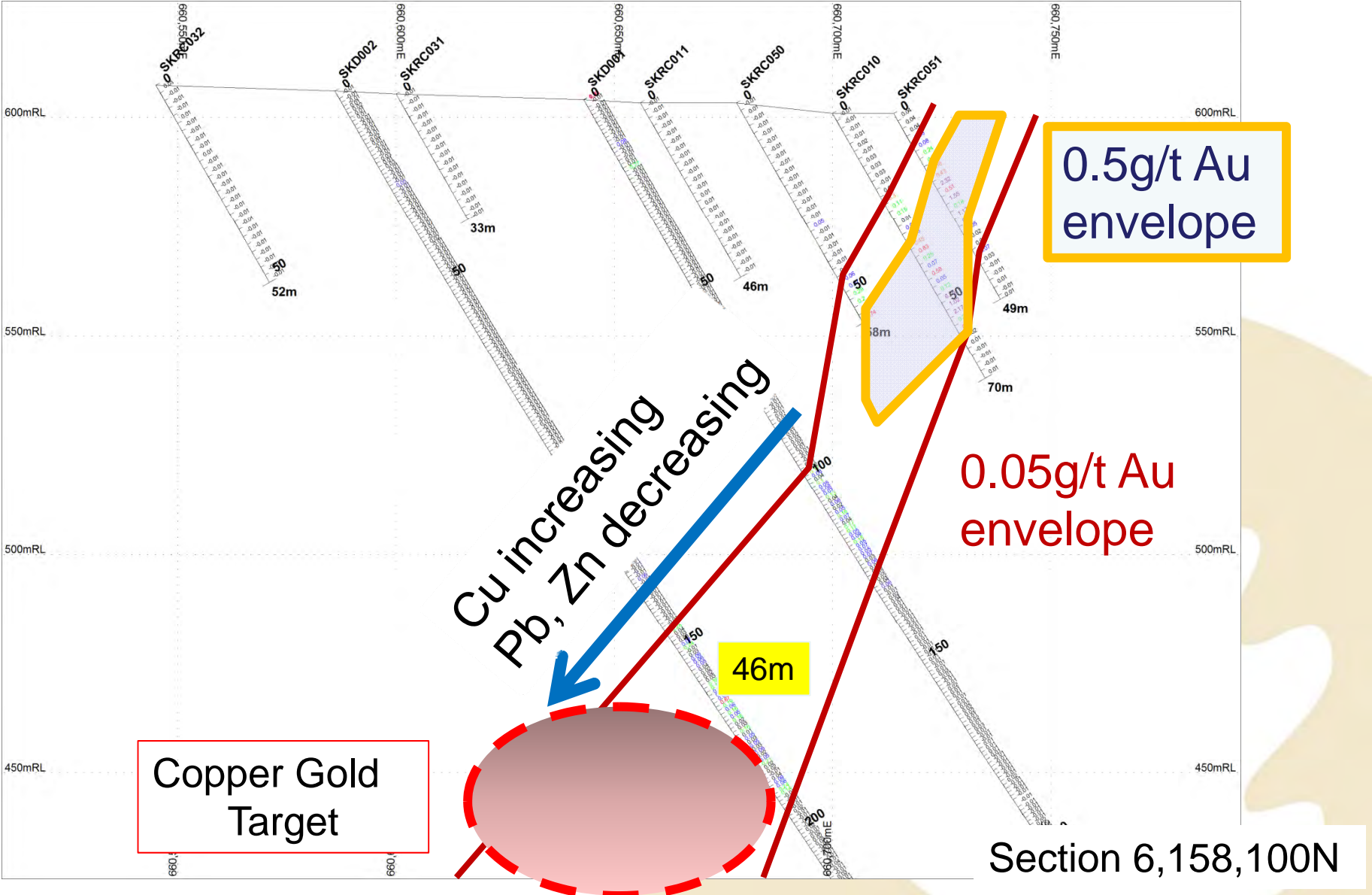
Spion Kop Prospect



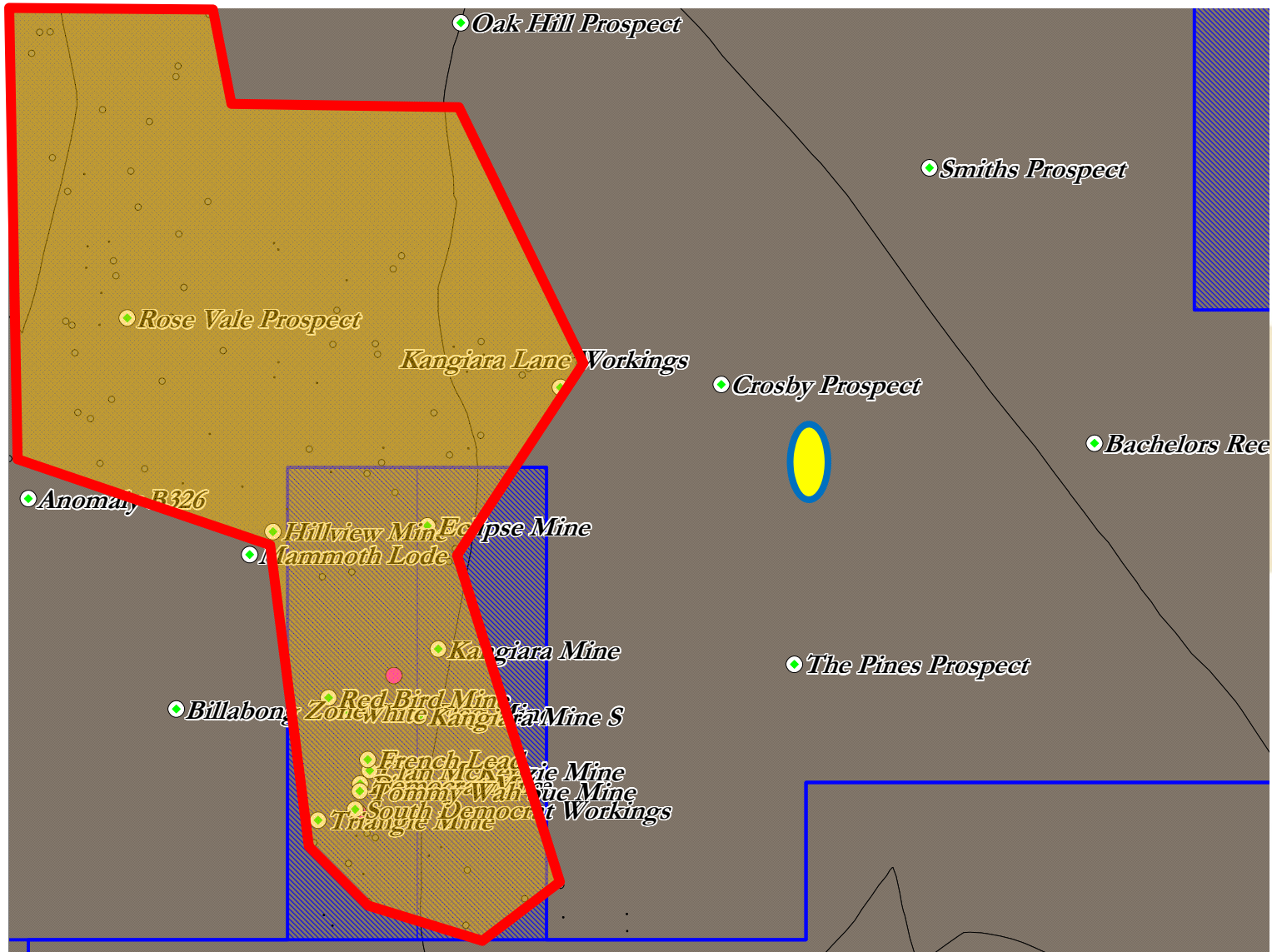
Significant Gold

Hole ID	From (m)	To (m)	Intersection (m)	Gold (g/t)
SKRC003	10	12	2	0.55
SKRC006	14	16	2	0.55
SKRC010	36	58	22	1.09
Including	48	54	6	3.11
SKRC050	54	58 (EOH)	4	0.70
SKRC051	18	28	10	1.14

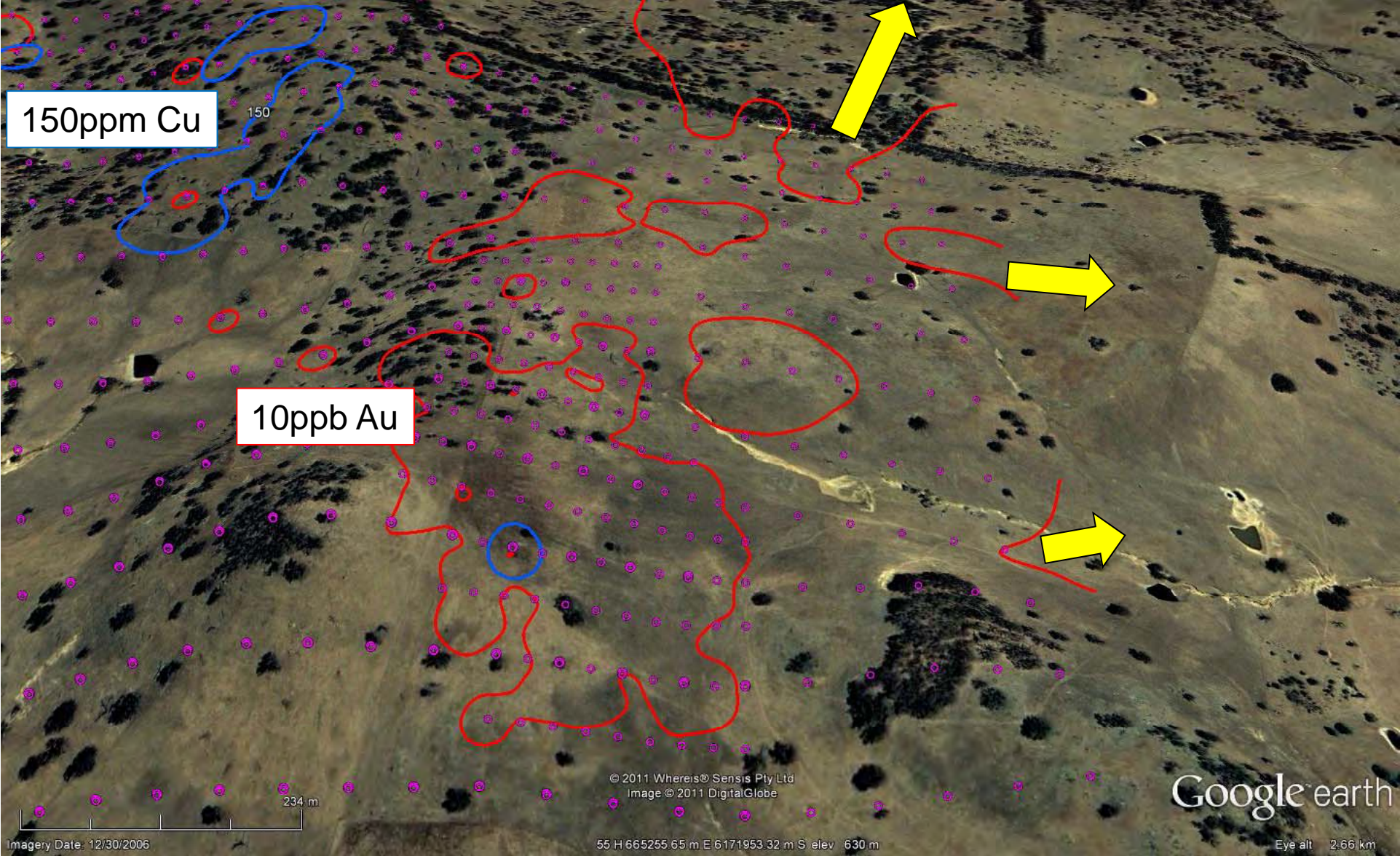
Spion Kop Prospect



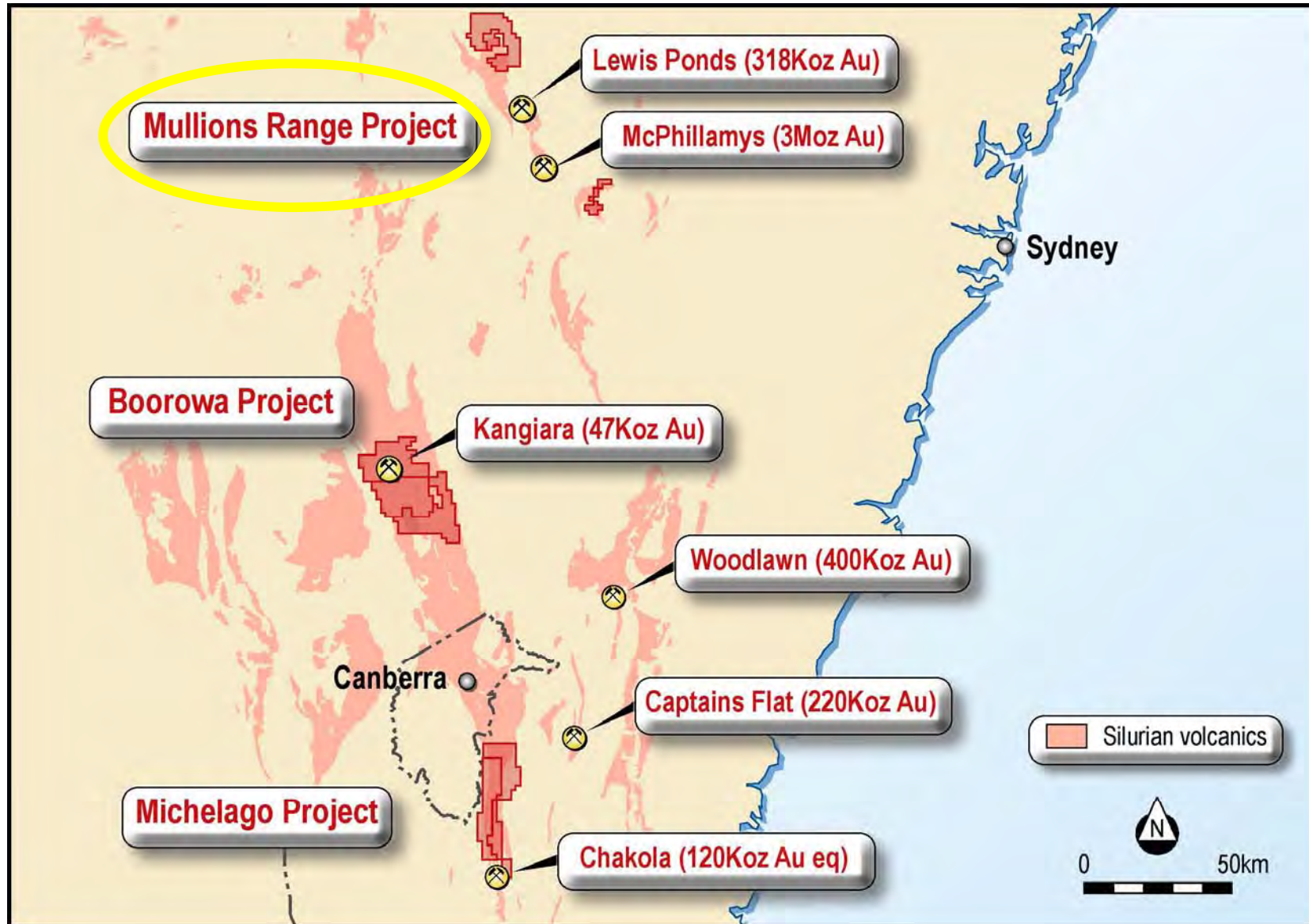
Crosby Prospect – Streams Au



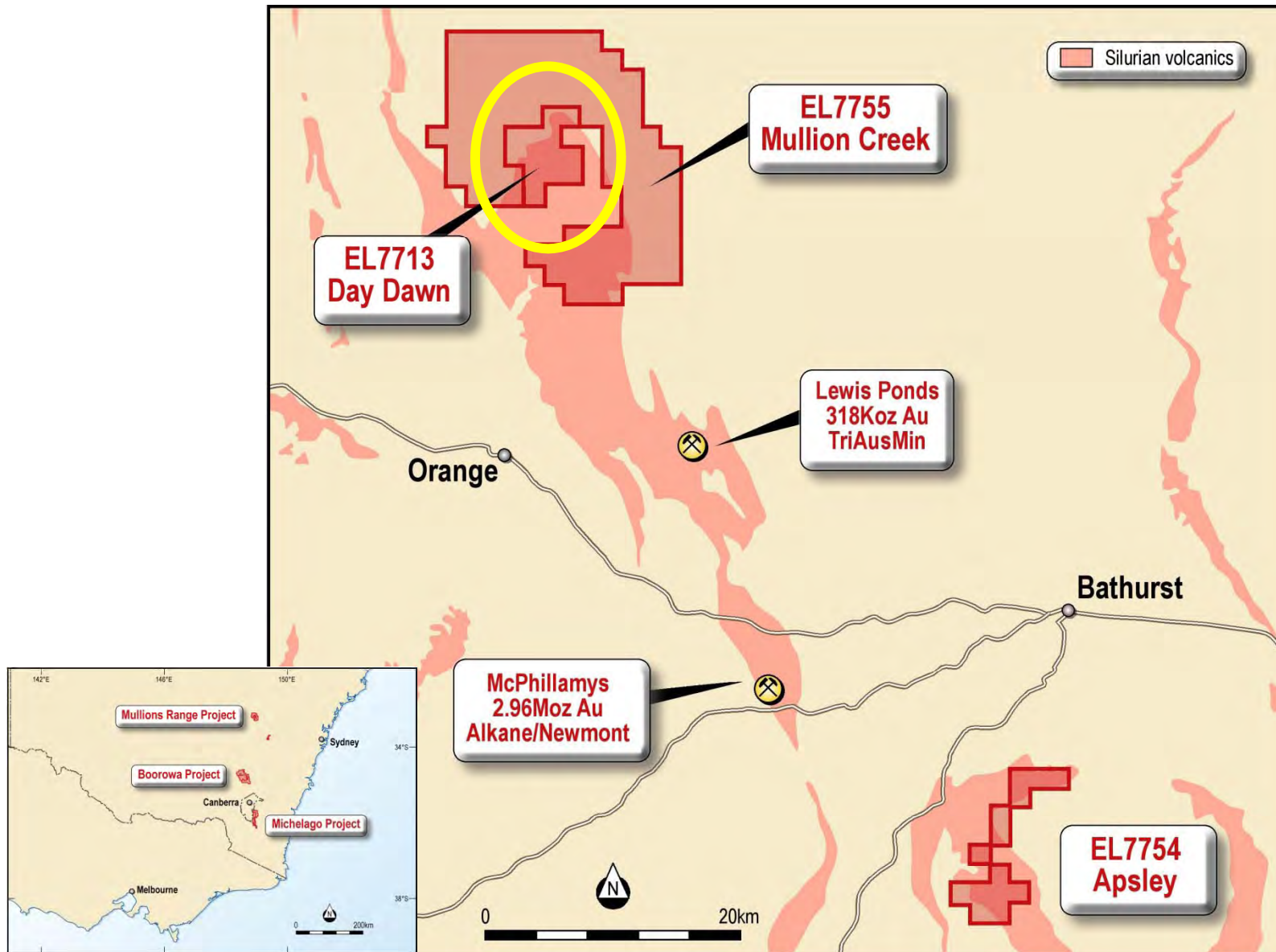
Crosby Prospect



Lachlan Gold Province



Mullions Range Project



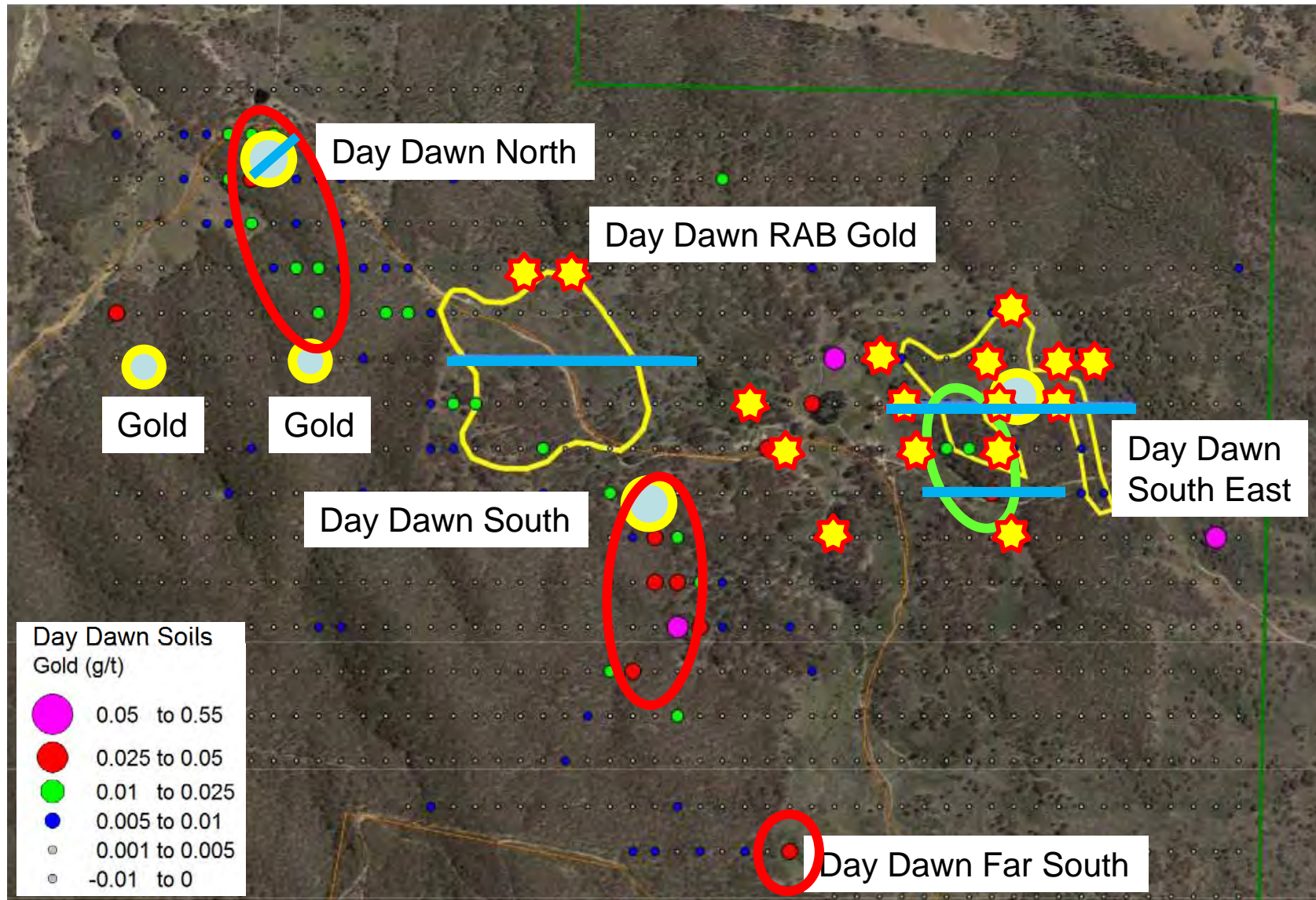
Day Dawn Prospect

- Previous Exploration – **Base Metal Focus**
 - 1970's : AMOCO
 - 1980's : Shell
 - 1990's : TOAD – 5 DDH/RC – 1,100m, 17 samples

- Oakland 2011 – **Gold Focus**
 - ✓ March - Rock sampling – DD RAB Gold, DDS, DDSE
 - ✓ June – Soil Sampling
 - ✓ July – IP Geophysics
 - ✓ August – Shallow RC Drilling



Day Dawn – Soils & IP





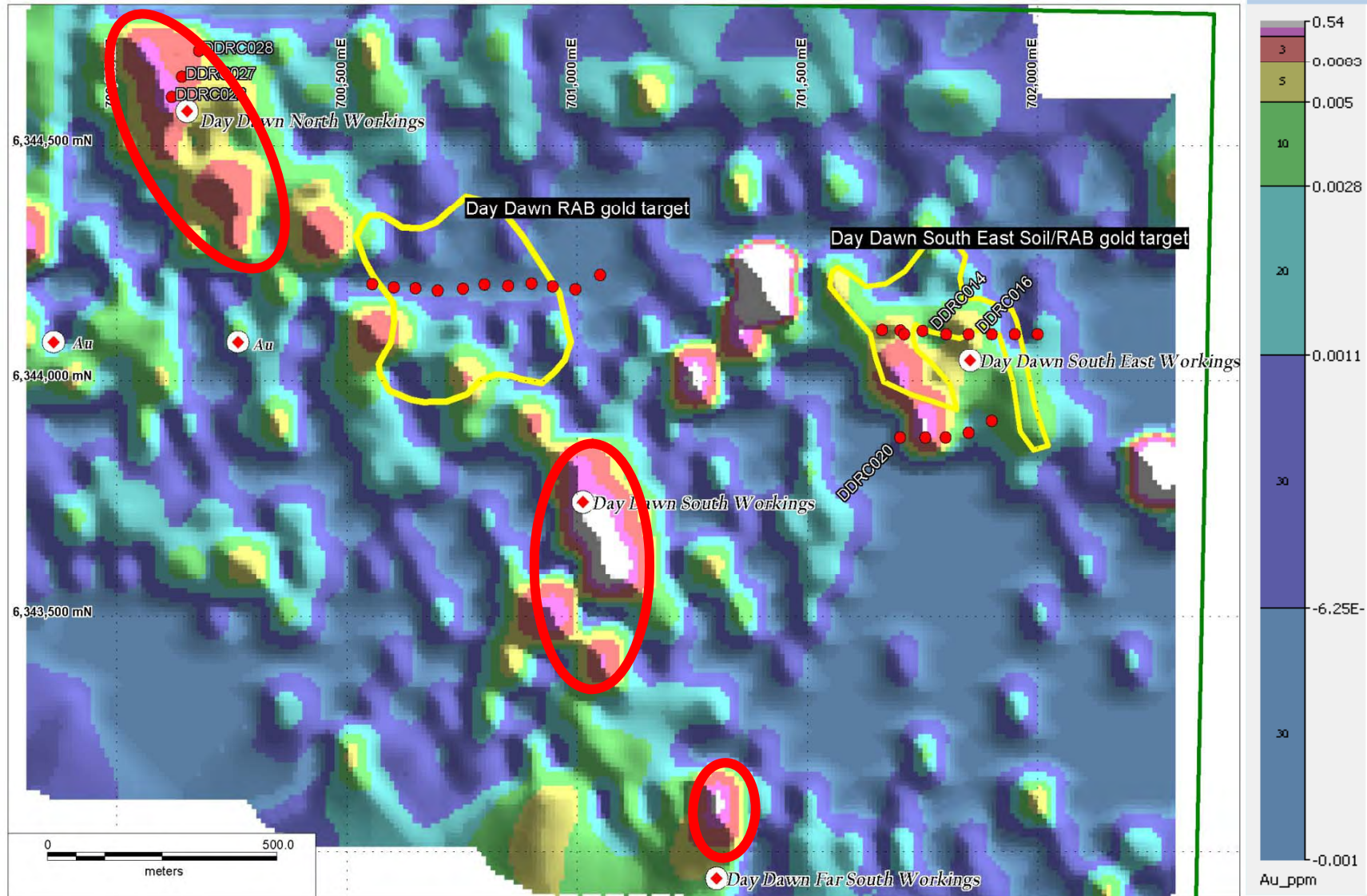
Day Dawn RC drilling

Hole ID	Prospect	From (m)	To (m)	Intersection (m)	Gold (g/t)	Silver (g/t)	Lead (%)	Zinc (%)
DDRC014	South-East	20	22	2	0.44	3.7	1.24	0.30
DDRC016	South-East	46	64	18	0.02	5.8		0.44
DDRC020	South-East	14	18	4	0.28		1.64	
DDRC026	North	8	10	2	0.16		0.17	
and		20	22	2	0.19	10		
and		32	34	2	0.21	11		
DDRC027	North	26	52	26	0.14	15	0.47	0.59
including		34	44	10	0.17	27.3	1.01	1.24
DDRC028	North	61	64	3	0.13	5.7		

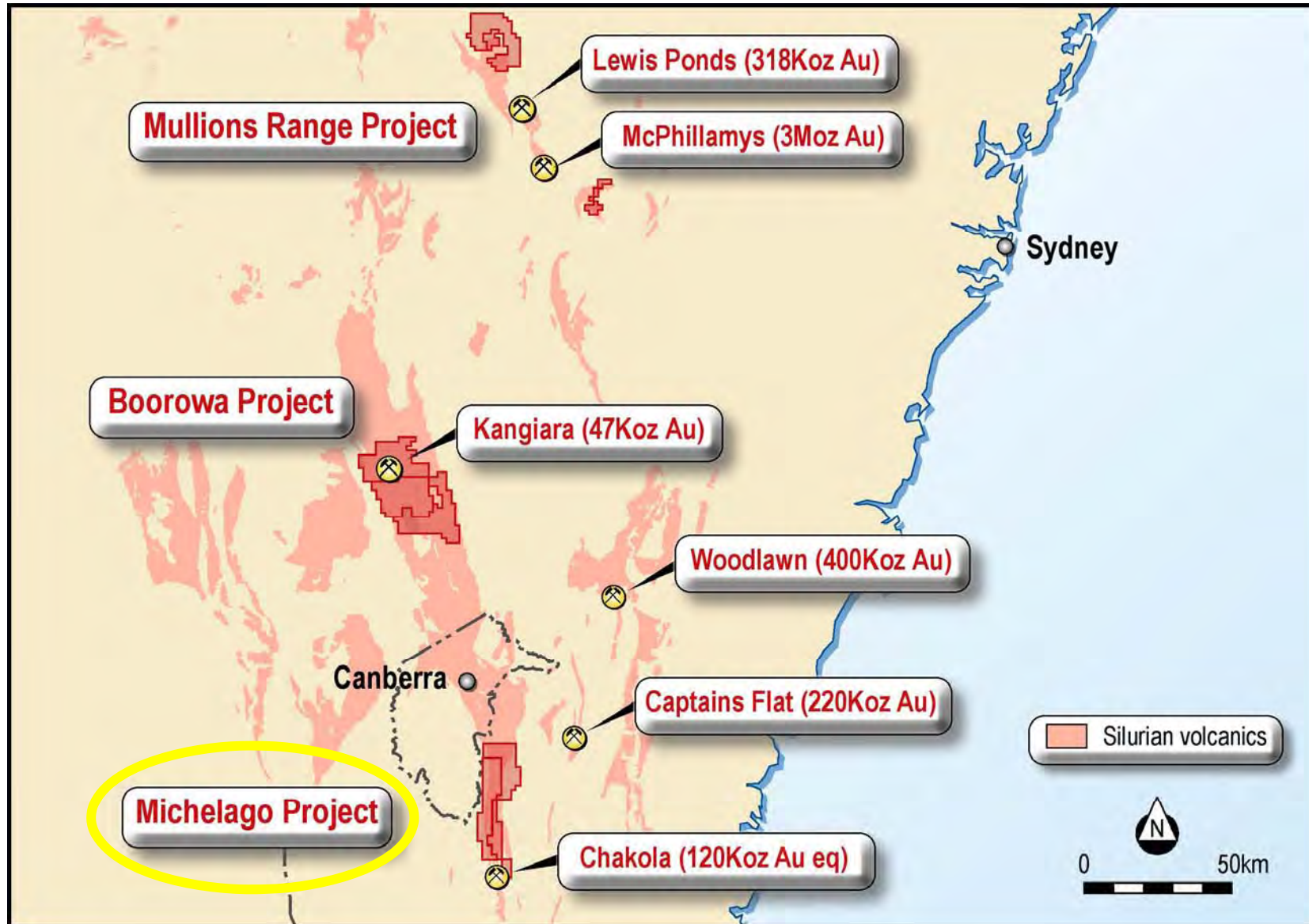
Day Dawn – Untested Soils - Gold



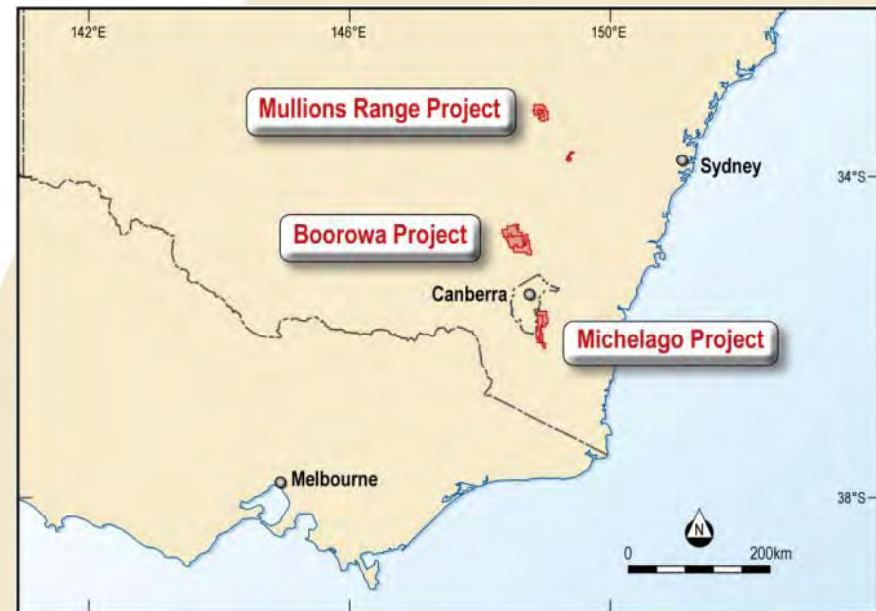
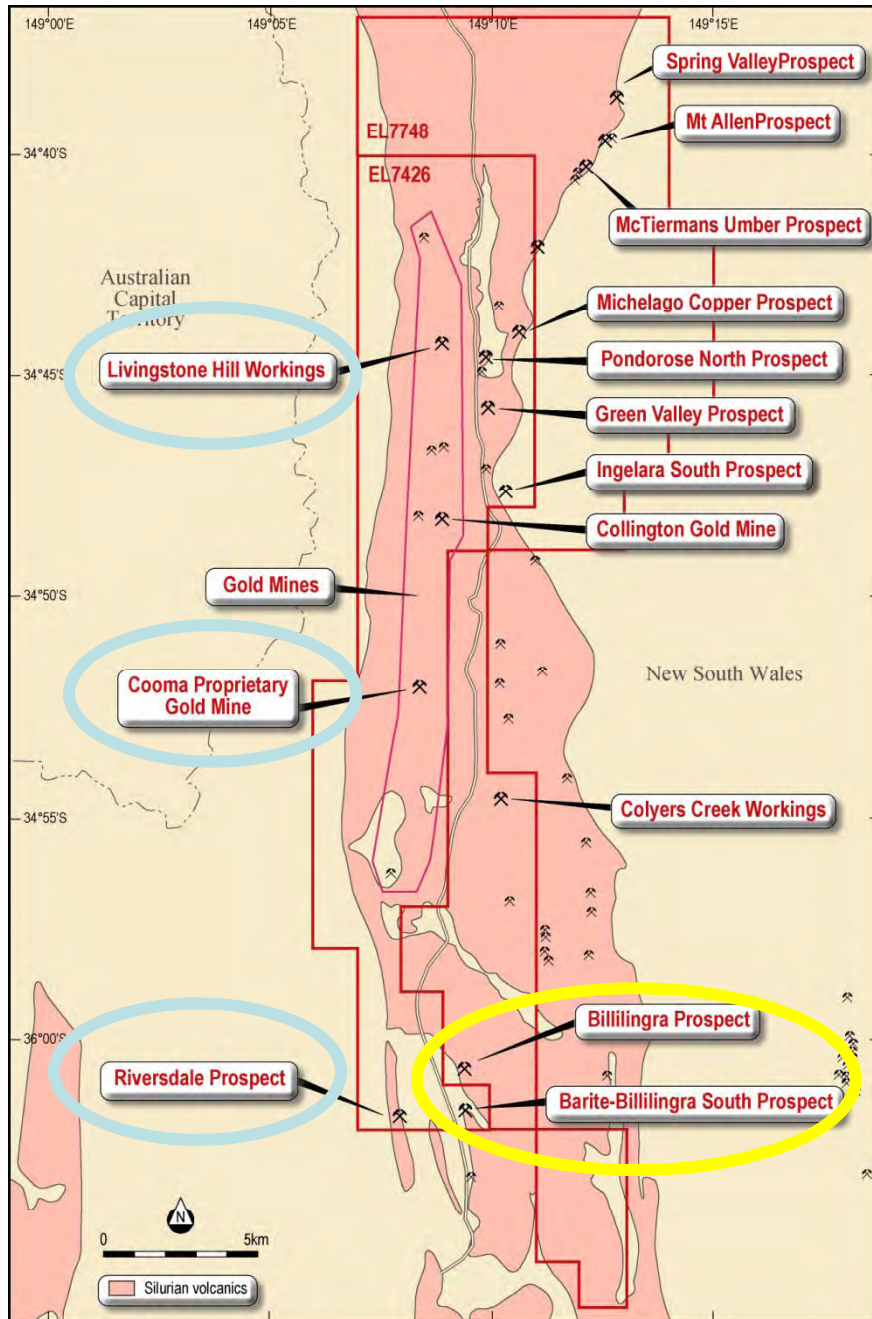
Oakland
RESOURCES



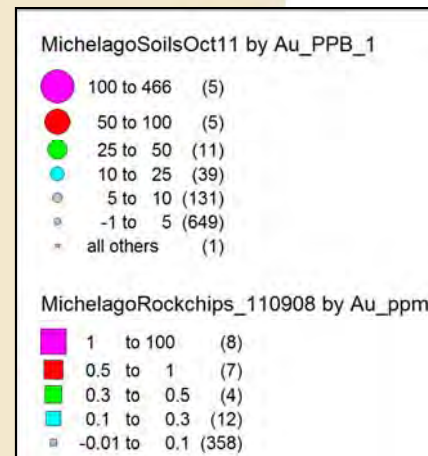
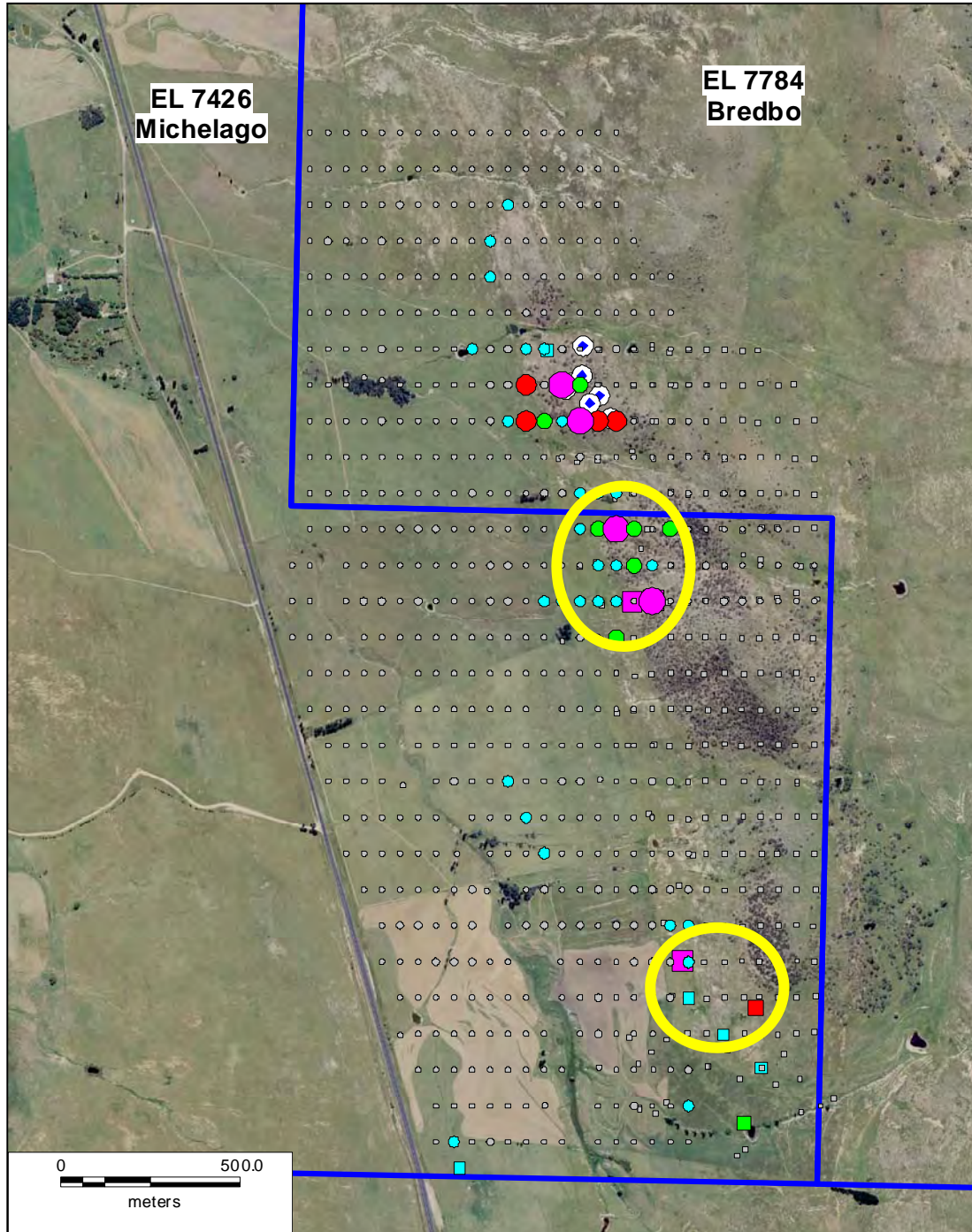
Lachlan Gold Province



Michelago Project



Billilingra Prospect



Explore → Discover → Define → Mine

➤ 2011

- ❖ RC - Spion Kop & Day Dawn
 - ✓ 1st phase drill test – **Immediate Success!**
 - ✓ Deep Cu-Au target generated
- ❖ Map, sample (rock & soil) and IP survey
 - ✓ **Crosby, Billilingra**, Day Dawn, Cooma Proprietary,

➤ 2012

- ❖ RC drill – Crosby & Billilingra
- ❖ Infill soils – Day Dawn; interp of zonation
- ❖ Rank targets for 1st phase drill testing
 - ❖ (?) Deep drill test Spion Kop

Oakland Resources - Summary

- Drilling targets *with Success*
- Focused on Gold rich VHMS related mineralisation
- Current focus - under explored Lachlan Gold Province
- Exploration model - **VALIDATED**
- Pipeline of prospects – **Crosby**
- Secured a dominant position in highly prospective emerging gold belt
- Reviewing Opportunities
- All projects - **100%** Oakland Resources

Disclaimer

This presentation has been prepared by Oakland Resources Limited (Oakland). The information contained herein is a professional opinion only and is given in good faith.

Certain information in this presentation has been derived from third parties and though Oakland has no reason to believe that it is not accurate, reliable or complete, it has not been independently audited or verified by Oakland.

Any forward-looking statements in this presentation are subject to uncertainties, risk and contingencies which are outside the control of, and may be unknown to, Oakland. They relate only to the date of this presentation, they assume the success of Oakland's strategies and fund raising efforts, and they are subject to significant regulatory, business, competitive and economic uncertainties and risk. Actual future events may vary materially from the statements and the assumptions on which the opinions are based.

Oakland makes no representation or warranty as to the accuracy, reliability or completeness of the information in this document and does not take responsibility for updating or correcting any errors or omissions which may become apparent after this is released.

To the extent permitted by law, Oakland and its officers, employees, related bodies and agents disclaim all liability, directly, indirectly or consequentially, for any loss or damage suffered by a recipient or other persons arising out of, or in connection with, any use or reliance on this presentation or information.

The information in this report that relates to Mineral Resources and Exploration Results are based on information compiled by Mr Mark Arundell who is a Member of the Australian Institute of Geoscientists. Mr Arundell is the Managing Director of Oakland. Mr Arundell has sufficient experience which is relevant to the style of mineralisation and type of deposit under consideration and to the activity which he is undertaking to qualify as a Competent Person as defined in the 2004 Edition of the 'Australasian Code for Reporting of Exploration Results, Mineral Resources and Ore Reserves'. Mr Arundell consents to the inclusion in the report of the matters based on his information in the form and context in which it appears.