



ASX Release

10 October 2011

The Company's Managing Director Mr. Howard Renshaw will be presenting at the Mines and Money Conference in Sydney this afternoon. Investors can access the presentation on the Company's website.

The same presentation will be given at the ABN Newswire Investorium forum after markets close this evening.

For further details please contact:

Howard V. Renshaw (Managing Director)

Tel: (+61 2) 9251 6730
Email: admin@qmcl.com.au

David Sasson
(Northfield Communications - FIRSt)

Tel: (+61) 0411 468 966

or visit our Website at: www.qmcl.com.au

The information in this report that relates to Exploration Results, Mineral Resources or Ore Reserves is based on information compiled by Guojian Xu, a Member of Australasian Institute of Mining and Metallurgy and a Fellow of the Society of Economic Geologists. Dr Guojian Xu is a consultant to Queensland Mining Corporation Limited through Redrock Exploration Services Pty Ltd. Dr Xu has sufficient experience deemed relevant to the style of mineralisation and type of deposit under consideration and to the activity, which he is undertaking to qualify as a Competent Person as defined in the 2004 Edition of the Australasian Code for Reporting Results, Mineral Resources and Ore Reserves. Dr Xu consents to the inclusion in the report of the matters based on his information in the form and context in which it appears



Queensland Mining Corporation Limited
ASX: QMN

Presentation Mines and Money Sydney Australia

10 October 2011

DISCLAIMER AND NOTICE



- The purpose of this Investor Presentation is **to provide selected parties (“Recipients”) with information regarding the Company**. It is not intended for and should not be distributed to any persons other than as permitted herein. This Investor Presentation is not a prospectus, offer information statement or any other disclosure statement within the meaning of the Corporations Act 2001 and has not been lodged with or registered by the ASIC. As such there is a lower level of disclosure required than would be required in a prospectus or any such other disclosure document.
- This document has been prepared by Queensland Mining Corporation Limited (ACN 109 962 469) (“QMC” or the Company). The Directors of the Company have no reason to believe the information incorporated in the Investor Presentation is other than reliable, however they have not sought independently to verify all such information and therefore make no warranty as to its accuracy. Each Recipient must make its own independent assessment and investigation of the business opportunity and should not rely on any statement or the adequacy and accuracy of any information and obtain independent and specific advice from appropriate professional advisers.
- The information contained in this Investor Presentation or subsequently provided to the Recipient whether orally, electronically or in writing by or on behalf of QMC or its respective employees, agents, or consultants (Information) is provided on the terms and conditions of this notice.
- The Investor Presentation does not purport to contain all the information that a prospective investor may require about any potential investment in QMC or its underlying business. It is not intended to be a complete or accurate statement of material information.
- QMC makes no representation or warranty, express or implied, as to the accuracy, reliability, or completeness of the Information. QMC and its respective Directors, employees, agents and consultants shall have no liability (including liability to any person by reason of negligence or negligent misstatement) for any statements, opinions, information, or matters, express or implied arising out of, contained in or derived from, or any omissions from the Presentation, except liability under statute that cannot be excluded.
- The Investor Presentation contains reference to certain intentions, expectations, and plans of QMC that may or may not be achieved. They are based on certain assumption that may not be met or on which views may differ. The performance and operations of QMC may be influenced by a number of factors, many of which are outside the control of QMC. The Document contains reference to certain intentions, expectations, and plans of QMC that may or may not be achieved. They are based on certain assumption that may not be met or on which views may differ. Due to various risks and uncertainties, actual events or results or the actual performance may differ materially from those reflected or contemplated in such forward-looking statements. The performance and operations of QMC may be influenced by a number of factors, many of which are outside the control of QMC. No representation or warranty, express or implied, is made by QMC or any of its respective Directors, officers, employees, advisers, or agents that any intentions, expectations or plans will be achieved either totally or partially or that any particular rate of return will be achieved. No representation or warranty, express or implied, is made by QMC or any of its respective Directors, officers, employees, advisers, or agents that any intentions, expectations or plans will be achieved either totally or partially or that any particular rate of return will be achieved.
- The Investor Presentation is confidential to QMC. By its acceptance, the Recipient agrees that it will not transmit, reproduce or make available the Presentation to anyone other than its professional advisers without prior consent of QMC. Any disclosure to the advisers of the Recipient must be on a confidential basis for the purpose only of assessing the Presentation and the information contained therein as adviser to the Recipient.
- QMC reserves the right to reject any expression of interest and to withdraw this Presentation at any time without giving notice of reasons to Recipients. The lodgement of any expressions of interest by a Recipient may or may not result in an offer being made to the Recipient, on such terms as QMC may determine.



1.0 For Greenmount, Kuridala, Vulcan, McCabe, Stuart and Flamingo deposits

Information in this presentation that relates to exploration results and Mineral Resources is based on information compiled by Max Tuesley a consultant to QMC and a Member of the Australasian Institute of Mining and Metallurgy and on information compiled by GuojianXu, a Member of Australasian Institute of Mining and Metallurgy and a Fellow of the Society of Economic Geologists. Dr GuojianXu is a consultant to Queensland Mining Corporation Limited through Redrock Exploration Services Pty Ltd. Dr Xu has sufficient experience deemed relevant to the style of mineralisation and type of deposit under consideration and to the activity, which he is undertaking to qualify as a Competent Person as defined in the 2004 Edition of the Australasian Code for Reporting Results, Mineral Resources and Ore Reserves. MrTuesley has reviewed and compiled all of the resource modeling work and has sufficient experience deemed relevant to the style of mineralisation and type of deposit under consideration and to the activity, which he is undertaking to qualify as a Competent Person as defined in the 2004 Edition of the 'Australasian Code of Reporting of Exploration Results, Mineral Resources and Reserves, the JORC Code'. MrTuesley& Dr Xu consent to the inclusion in the presentation of the matters based on information in the form and context in which it appears.

2.0 For Young Australian and Gilded Rose deposits

Information in this presentation relates to exploration results and Mineral Resource estimates based on information compiled by Dr GuojianXu and Mr James Mcllwraith. Mr Mcllwraith is a Member of the Australasian Institute of Mining and Metallurgy and is a consultant to Queensland Mining Corporation Limited through JM Geological Consulting Pty Ltd. With respect to their respective contributions, these persons qualify as Competent Persons as defined in 2004 Edition of the Australasian Code for Reporting of Exploration Results, Mineral Resources and Ore Reserves. Dr Xu and Mr Mcllwraith consent to the inclusion in this report of the matters based on the respective information provided by each of them, in the form and context in which it appears.

3.0 For Mt Freda deposit

Information in this presentation relates to exploration and Mineral Resource estimates based on information compiled by Dr GuojianXu and Mr Arnold van derHeyden. Mr van derHeyden is a Member of the Australian Institute of Mining and Metallurgy and is a consultant to Queensland Mining Corporation through Hellman and Schofield Pty Ltd. With respect to their respective contributions, these persons qualify as Competent Persons as defined in 2004 Edition of the Australasian Code for Reporting of Exploration Results, Mineral Resources and Ore Reserves. Dr Xu and Mr van derHeyden consent to the inclusion in this report of the matters based on the respective information provided by each of them, in the form and context in which it appears.

COMPANY STRUCTURE



ASX Code	QMN
Shares on issue	402.6M
Options (72.6M listed @20c, expiry 31 May 2012, 25.0M unlisted)	97.6M
Share price (7 October 2011)	\$0.05
Market cap: Undiluted for options	A\$20.1M
Cash at Bank -As at 30 June 2011, Subsequent event 7July – loan	\$1.1 M \$3.0 M

Board and Management	
David Usasz	Chairman
Howard Renshaw	Managing Director & Deputy Chairman
Brian Rear	Non Exec Director
Richard Hill	Non Exec Director Company Secretary
Dr. GuojianXu	GM - Exploration
Richard Swann	GM- Mining & Operations
Stephen Maffey	GM - Commercial



Top 5 Shareholders:	
Tulla Resources Group	6.5%*
Ross J Taylor	3.0%
HVR P/L	2.6%
Global House Ltd	2.7%
BLB Holdings P/L	1.8%
Total top 5	16.6%
<i>*includes Marley Holdings 1%</i>	



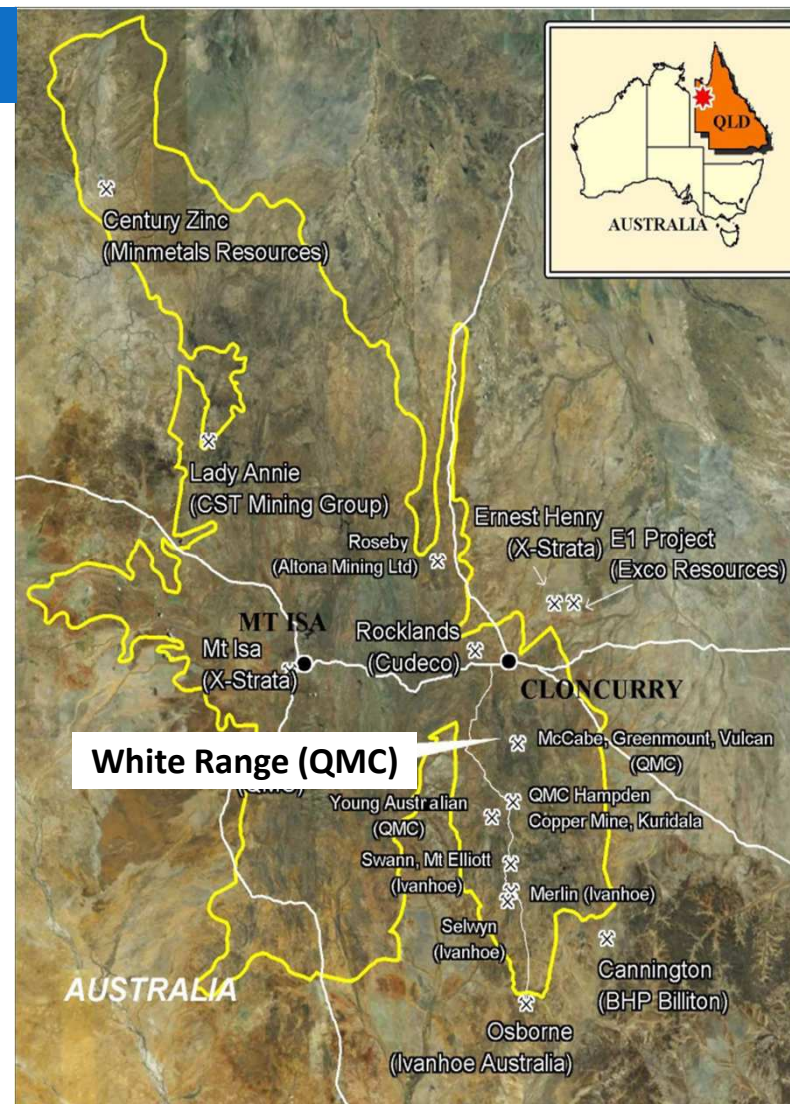
CLONCURRY - COPPER BELT NW Queensland

<p>Who is QMC?</p>	<p>A developer of 'high quality' copper resources in Australia's premier base metals province</p>
<p>Why select Cloncurry?</p>	<ul style="list-style-type: none"> - World class Copper - base metal mineral province - Established infrastructure and mine support services
<p>What is QMC's Development Strategy?</p>	<ul style="list-style-type: none"> - To establish Copper and Gold Production. - Build alliances, partnerships and JVs to enable cash flow and establish production opportunities.
<p>What are QMC's Key Commodities:</p>	<p>Copper Gold Cobalt</p>

QUEENSLAND'S COPPER BELT

Key Companies Cloncurry Area

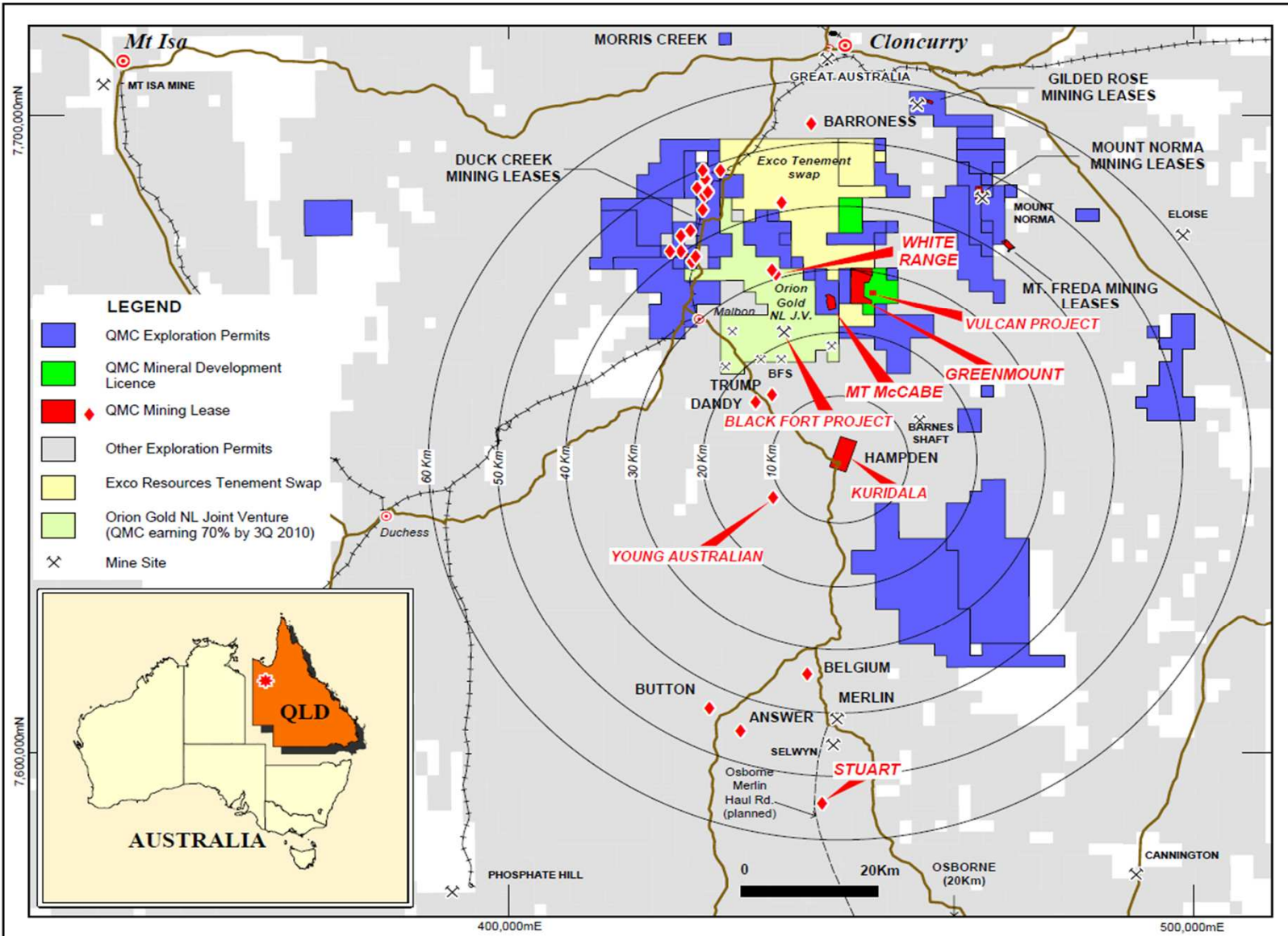
- ◆ **CST Mining** CST Mining (Lady Annie = **437kt Cu**)
- ◆ **MMG Group** Minmetals (Centruy + Dougall River = 11.6Mt Zn + 1.6Mt Pb)
- ◆ **BHP Billiton** BHP (Cannington = 557Moz Ag, 4.7Mt Pb + 2.5Mt Zn)
- ◆ **Ivanhoe Australia** Ivanhoe (Merlin + Mount Dore + MtElliott + Osborne + Starra = **3.7Mt Cu** + 6.3Moz Au + 155t Re + 90kt Mo)
- ◆ **Xstrata** Xstrata (Ernest Henry + E1 + Monakoff + M East 1 = **2.2Mt Cu** + 3.3Moz Au)
- ◆ **Cudeco** Cudeco (Rocklands = **293kt Cu** + 191koz Au + 14kt Co)
- ◆ **Exco** Exco (Great Australia + Mt Colin + Turpentine + Kangaroo = **19kt Cu** + 116koz Au)
- ◆ **Altona Mining** Altona (Roseby = **1.1Mt Cu** + 296koz Au)
- ◆ **QMC** QMC (White Range + Stuart = **269kt Cu** + 308koz Au + 11kt Co)
- ◆ **Copper Chem** Cloncurry processing plants
Sulphide concentrate – 250,000tpa Cu cons
Cu sulphate from oxide ore – 25-30tpd



QMC DEPOSITS



'Quality' Resources – proximate to nearby processing plants and regional infrastructure



INFRASTRUCTURE - CLONCURRY

Hub – epicentre	cross roads, north, south, east and west
Rail	Main Mt Isa – Cloncurry – port of Townsville rail line
Heavy haulage	road train roads; road – rail transfer facilities
Water	new water pipeline completed to Cloncurry
Power	on power grid
Processing facilities	Third party plants at Cloncurry
Mine support services	work force, support services and engineering industries – Mt Isa and Cloncurry

QMC JORC RESOURCES (all categories)



(0.2% Cu cut-off unless stated otherwise)	RESOURCE	CONTAINED COPPER t	CONTAINED COBALT M lbs	CONTAINED GOLD OZ
WHITE RANGE				
GREENMOUNT	12.3 Mt @ 0.8% Cu, 0.06% Co, 0.3g/t Au	96,000	16.3	119,000
KURIDALA	7.2 Mt @ 0.8% Cu, 0.02% Co, 0.21g/t Au	61,000	3.2	49,000
MCCABE	7.7 Mt @ 0.6% Cu, 0.02% Co	44,000	3.4	
YOUNG AUSTRALIAN	2.1 Mt @ 1.03% Cu	21,000	-	-
VULCAN	1.4 Mt @ 0.7% Cu, 0.02% Co	9,000	0.5	
SUB-TOTAL WHITE RANGE	30.7Mt @ 0.8% Cu, 0.04% Co, 0.17g/t Au	231,000	23.4	168,000
STUART	5.6 Mt @ 0.6% Cu, 0.002% Co, 0.14g/t Au	31,000	2.4	25,000
FLAMINGO (1.0% cut-off)	0.1 Mt @ 6.0% Cu, 1.8g/t Au	7,000	-	7,000
TOTAL, COPPER DEPOSITS	36.4 Mt @ 0.74% Cu, 0.03% Co, 0.17g/t Au	269,000t	25.8 M lbs	200,000 oz

Not included in table:

GOLD –

Mt Freda, 1.6Mt @1.7g/t Au for 89k oz;

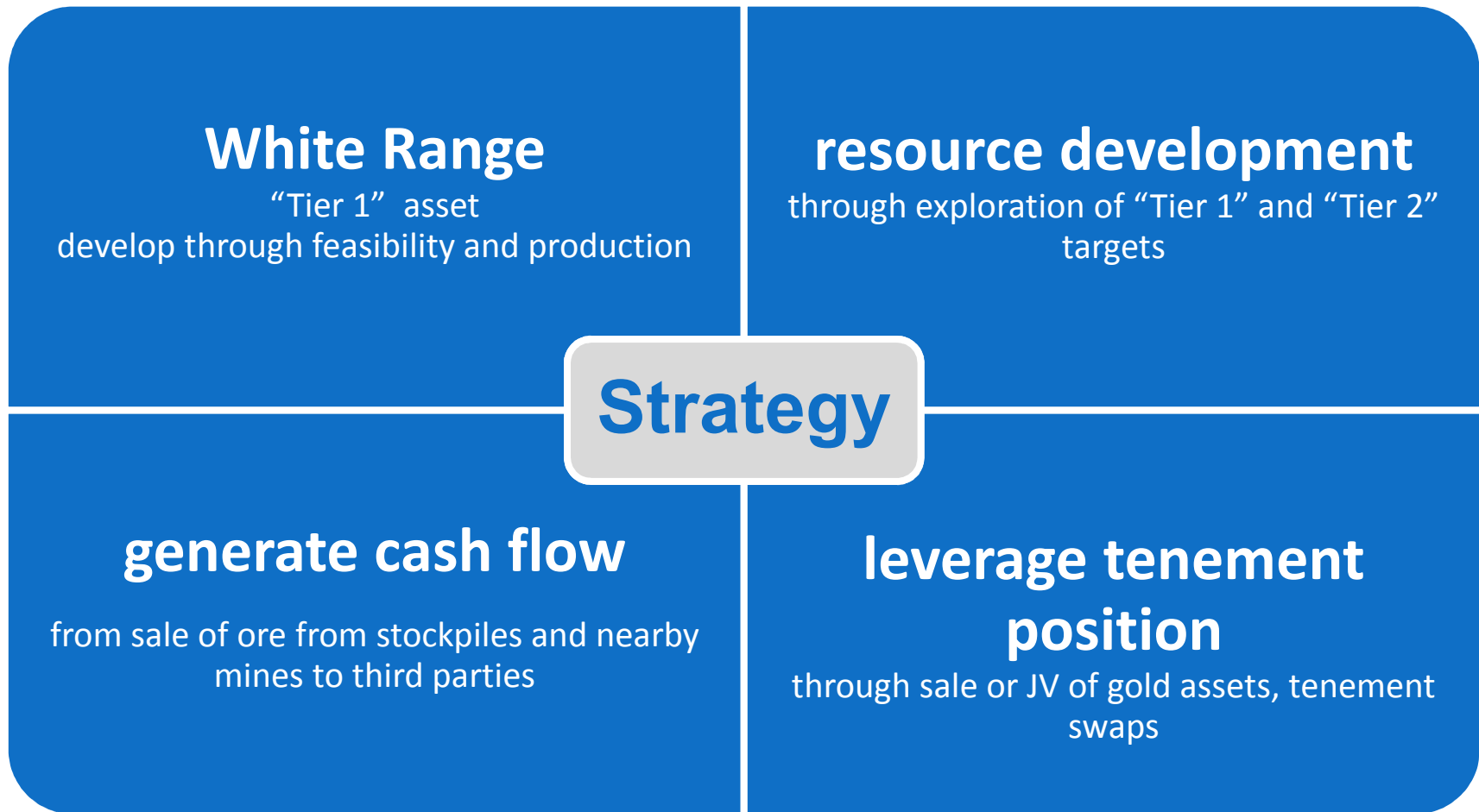
Gilded Rose 143kt @ 4.2g/t Au for 19k oz (0.5g/t cut-off): **108,000 oz** for Cloncurry deposits,

Global total for all Company projects: **308,000 oz**



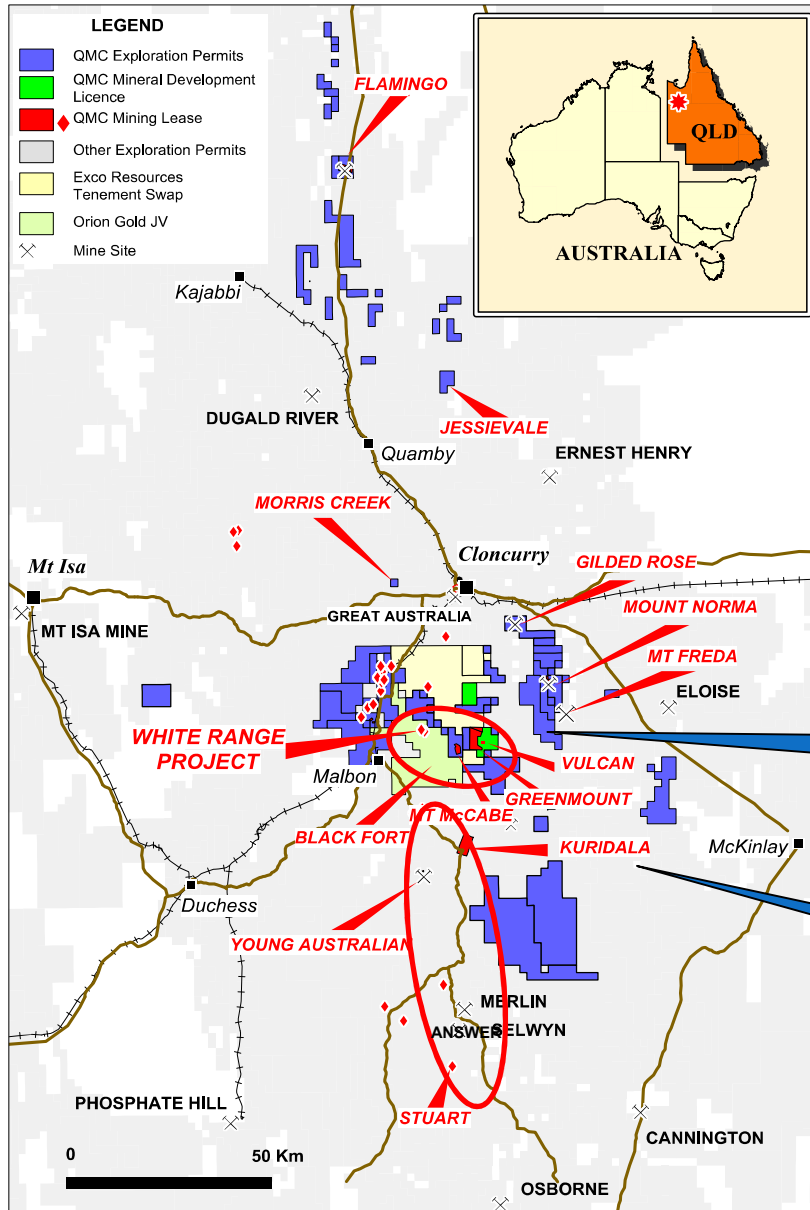
Corporate objective

To become a profitable stand-alone copper producer through the development of high quality resources



Core Asset: White Range

QMC MAJOR HOLDINGS AND CENTRAL PROCESSING OPTIONS - Copper



- White Range Project Cu, Co**
- Greenmount
 - McCabe
 - Vulcan
 - Hampden mine, Kuridala
 - Young Australian
 - Stuart

* Mt Norma /Cu, Mine and processing plant

White Range Area: 149,000t Cu
(Greenmount, McCabe and Vulcan mines)

Kuridala Area: 113,000t Cu
(Hampden, Young Australian and Stuart mines)



WHITE RANGE - JORC RESOURCES

(0.2% Cu cut-off unless stated otherwise)	RESOURCE	CONTAINED COPPER t	CONTAINED COBALT M lbs	CONTAINED GOLD OZ
WHITE RANGE				
GREENMOUNT	12.3 Mt @ 0.8% Cu, 0.06% Co, 0.3g/t Au	96,000	16.3	119,000
KURIDALA	7.2 Mt @ 0.8% Cu, 0.02% Co, 0.21g/t Au	61,000	3.2	49,000
MCCABE	7.7 Mt @ 0.6% Cu, 0.02% Co	44,000	3.4	
YOUNG AUSTRALIAN	2.1 Mt @ 1.03% Cu	21,000	-	-
VULCAN	1.4 Mt @ 0.7% Cu, 0.02% Co	9,000	0.5	
SUB-TOTAL WHITE RANGE	30.7Mt @ 0.8% Cu, 0.04% Co, 0.17g/t Au	231,000	23.4	168,000
STUART	5.6 Mt @ 0.6% Cu, 0.002% Co, 0.14g/t Au	31,000	2.4	25,000
TOTAL, COPPER DEPOSITS	36.3 Mt @ 0.74% Cu, 0.03% Co, 0.17g/t Au	262,000	25.8 M lbs	193,000

2011 EXPLORATION: PRIORITIES AND PIPELINE



30,000 metres of RC and Diamond drilling in 2H 2011 - 2012, commenced July

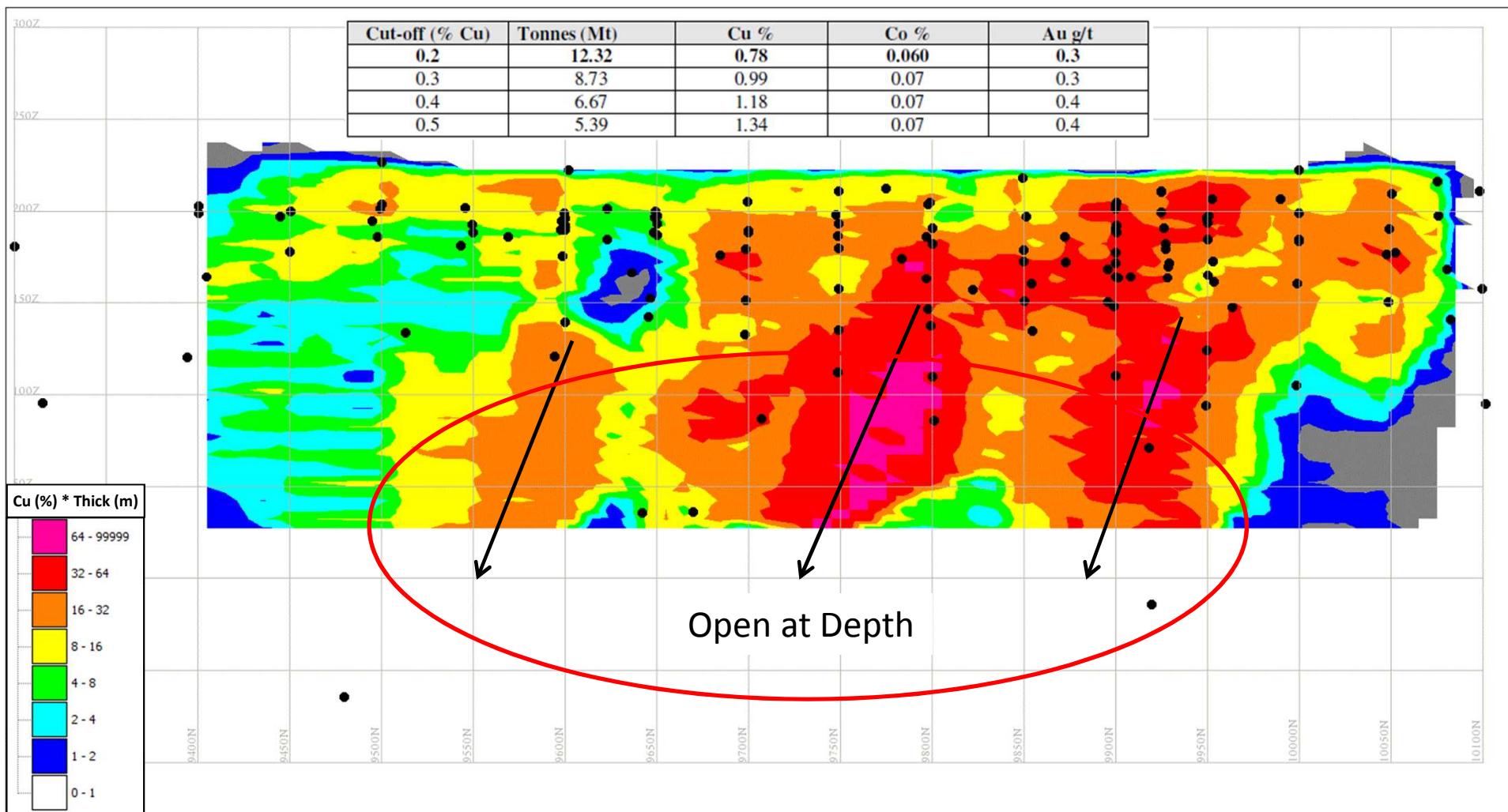
White Range Copper Project

- ◆ Increase resource base and JORC confidence level for White Range and Kuridala area of deposits.
- ◆ Complete metallurgical test work to delineate soluble copper resources at Greenmount, Hampden, Young Australian and Stuart.

White Range & Regional Copper Projects

- ◆ **Phase 1 - 10,000m** Commenced July 2011: Duck Creek, Young Australian, IOCG targets at Black Fort, Just There (10 RC holes for 2,000 metres commenced Sept - ASX ann 19 Sept 2011, targeting open pittable resources), Gold at Mt. Freda, Gilded Rose, and at Greenmount ML - Surprise and adjoining EPM chopper ridge.
- ◆ On 8 Sept 2011 company reported completion of 53 RC holes for 4,377m at **Duck Creek**; visible copper mineralization up to 33m; lab assay results pending;
- ◆ **Phase 2 – 10-20,000m** Commencing Oct 2011: Copper Projects - Young Australian ML, Greenmount and Pete's ML, Hampden ML (Kuridala), Sierra Line EPM copper, gold, moly and base metals, MDL205 (Greenmount, Vulcan West Molybdenum target strong geochem, analogue Ivanhoe's Merlin deposit).

WHITE RANGE: GREENMOUNT DEPOSIT

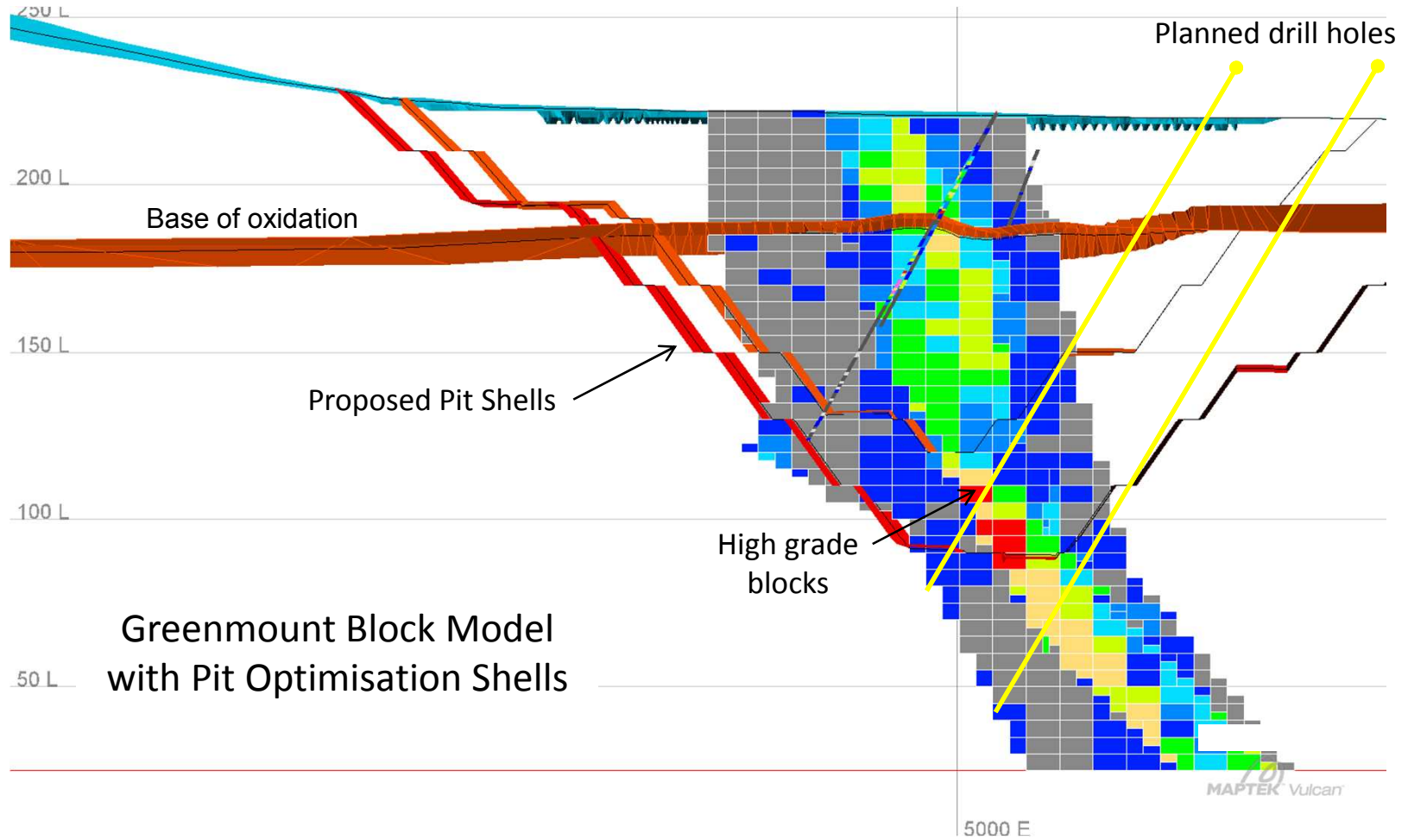


Cu Grade-Thickness Long Section

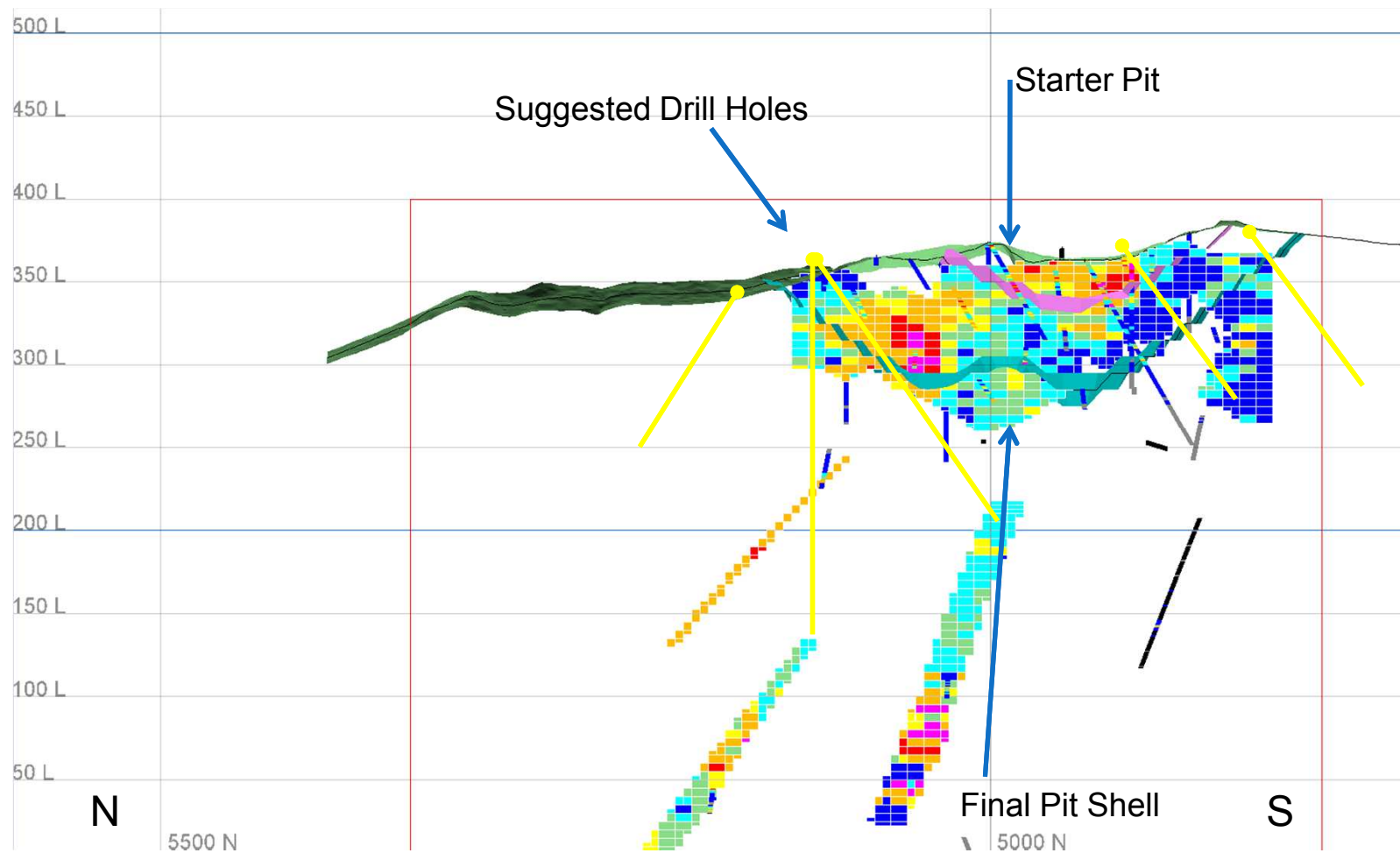
WHITE RANGE - GREENMOUNT DEPOSIT



High grade resources in pit floor – under-drilled

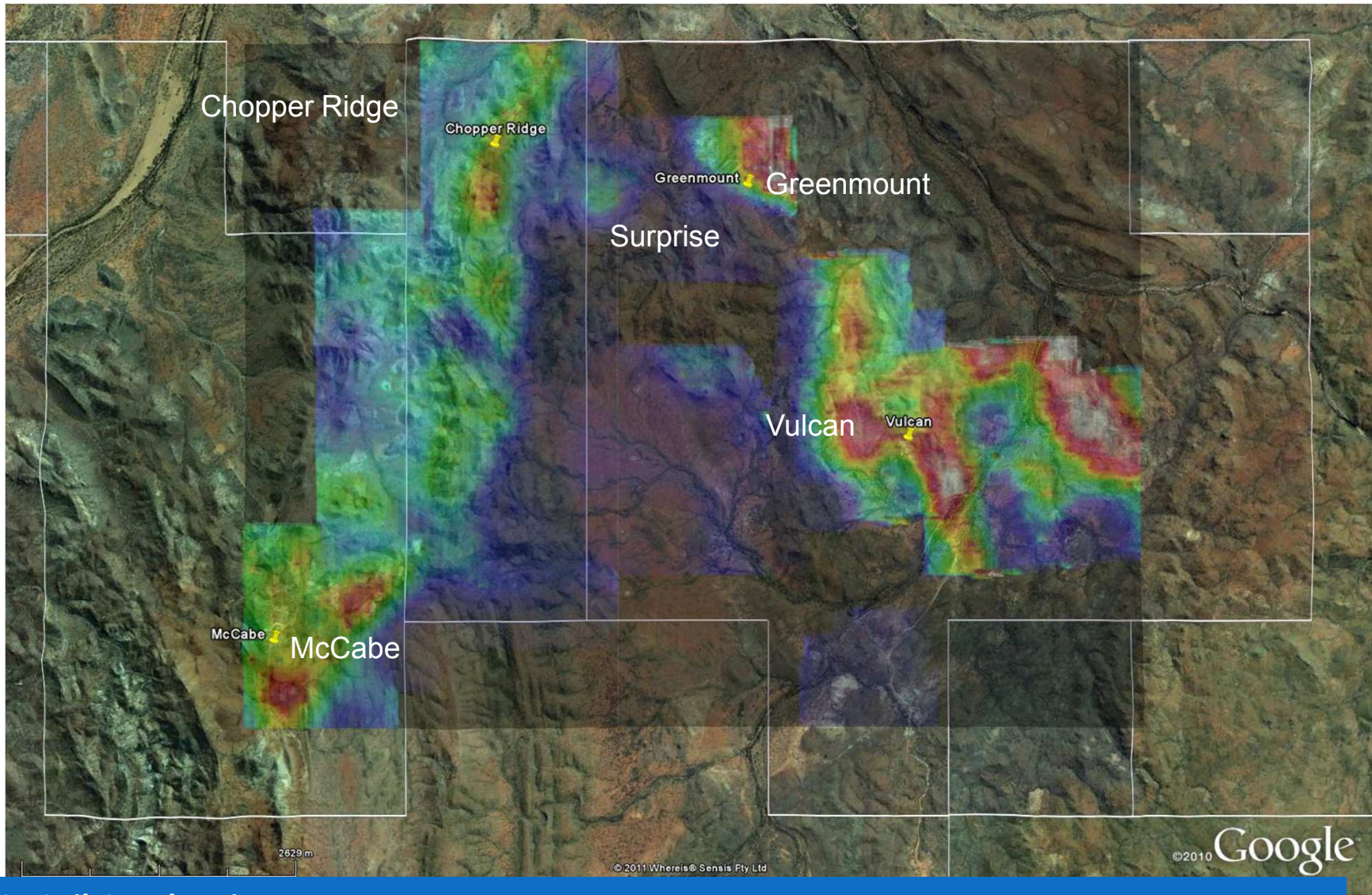


WHITE RANGE - McCabe Deposit



Section 4950E - Contact zone(s) between planar flat-lying (breccia) & tabular sub-vert. mineralisation not well-defined; N & S extension(s) of deposit un-constrained

WHITE RANGE: VULCAN, M^CCABE AND GREENMOUNT AREA



Cu Soil Geochemistry

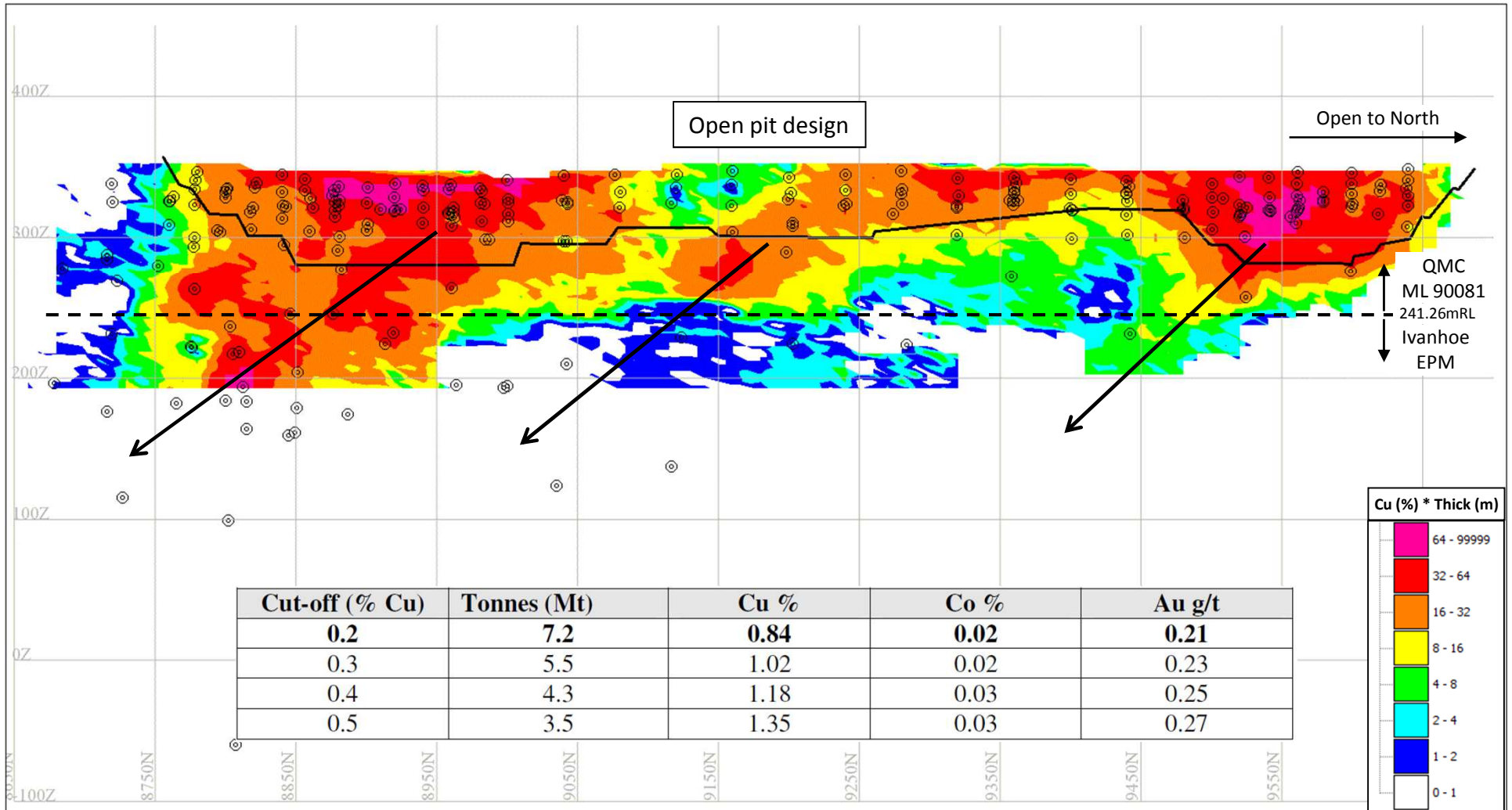
WHITE RANGE PROJECT - Kuridala Deposit



Open to the North
Drilling Planned

Cu grade-thickness contours and drill hole traces

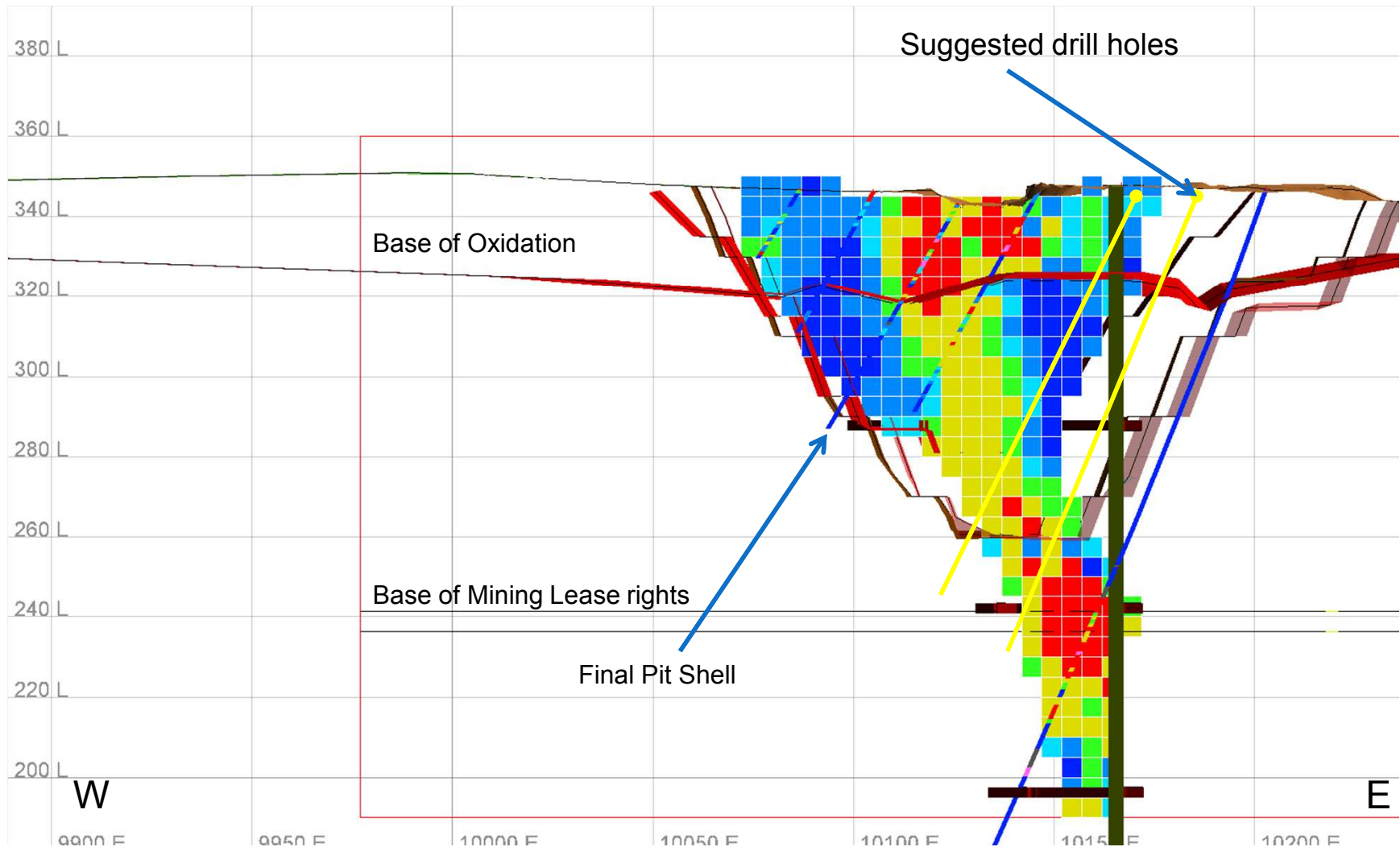
WHITE RANGE – Kuridala Deposit



Cu grade-thickness long section

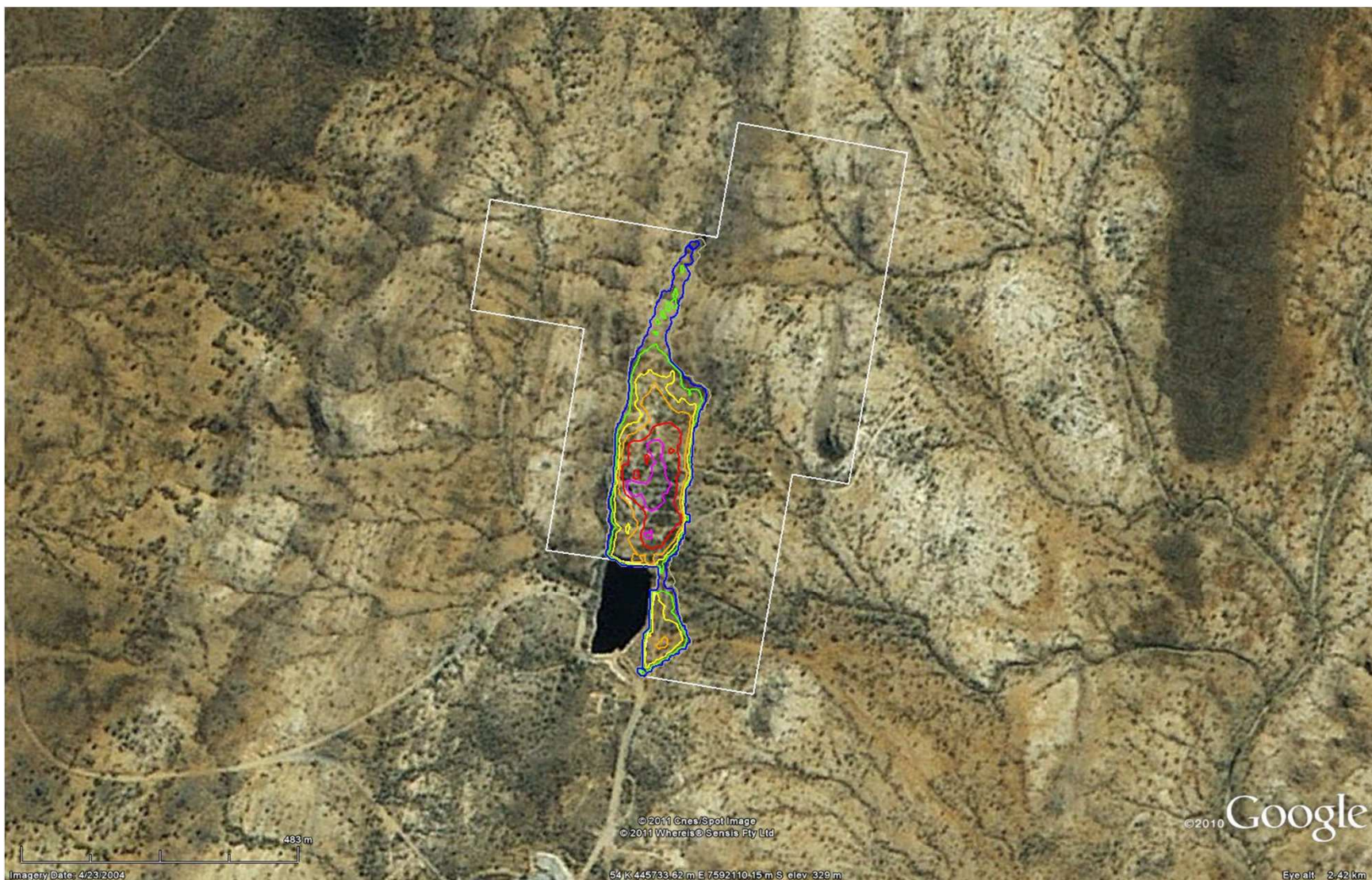


WHITE RANGE - Kuridala Deposit



South end – Section 8920N; deep high grade under drilled around the pit floor area

WHITE RANGE PROJECT - Stuart Deposit



Grade thickness contours

Resource Development

EXPLORATION SUCCESS - YOUNG AUSTRALIAN



Drilling included: 40.0m at 2.31% Cu from 58m

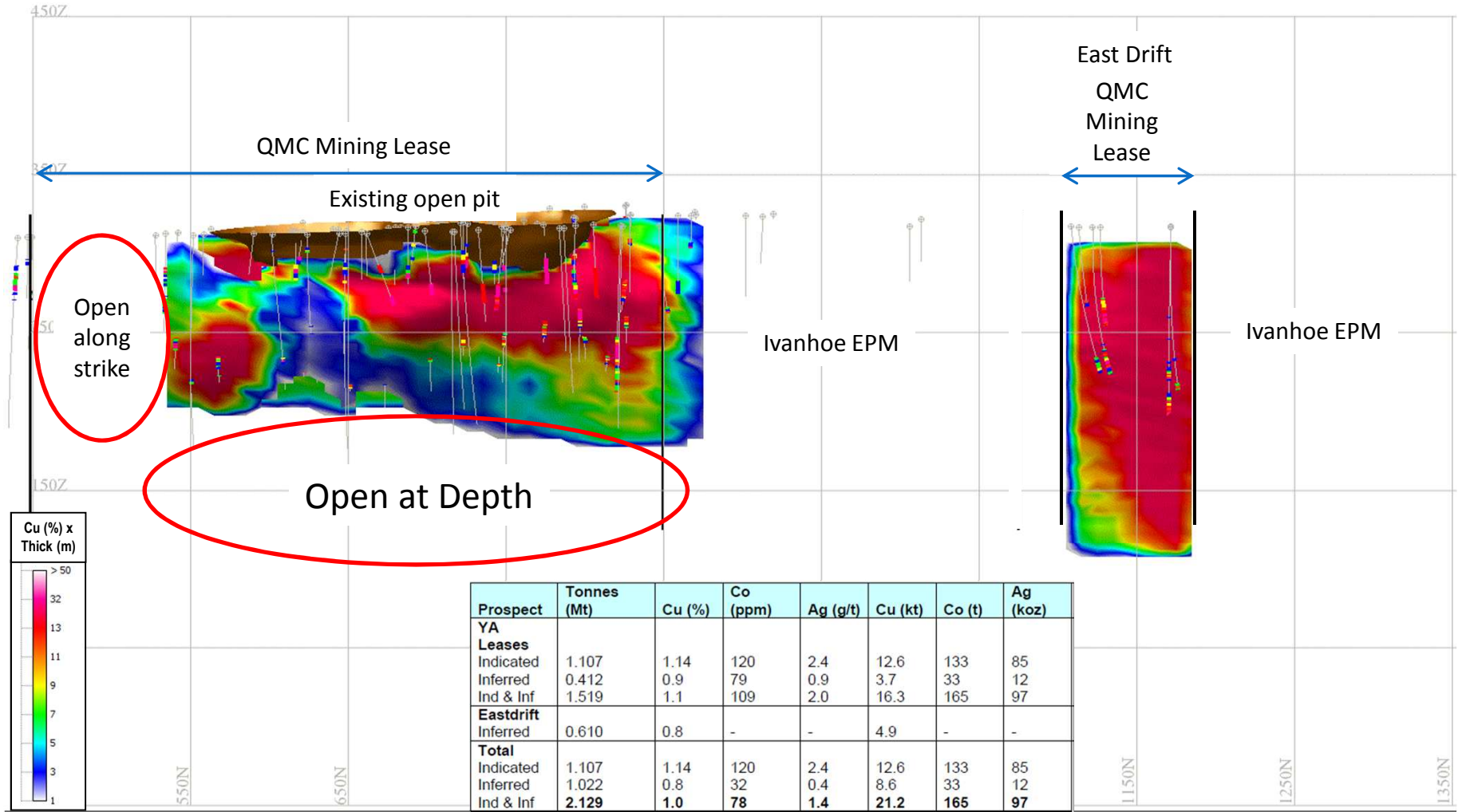
JORC Resource 2.1 Mt @ 1.0% Cu and 1.4g/t Ag for 21,000t Cu.

Further drilling now planned to increase resource tonnes and confidence levels.

YOUNG AUSTRALIAN

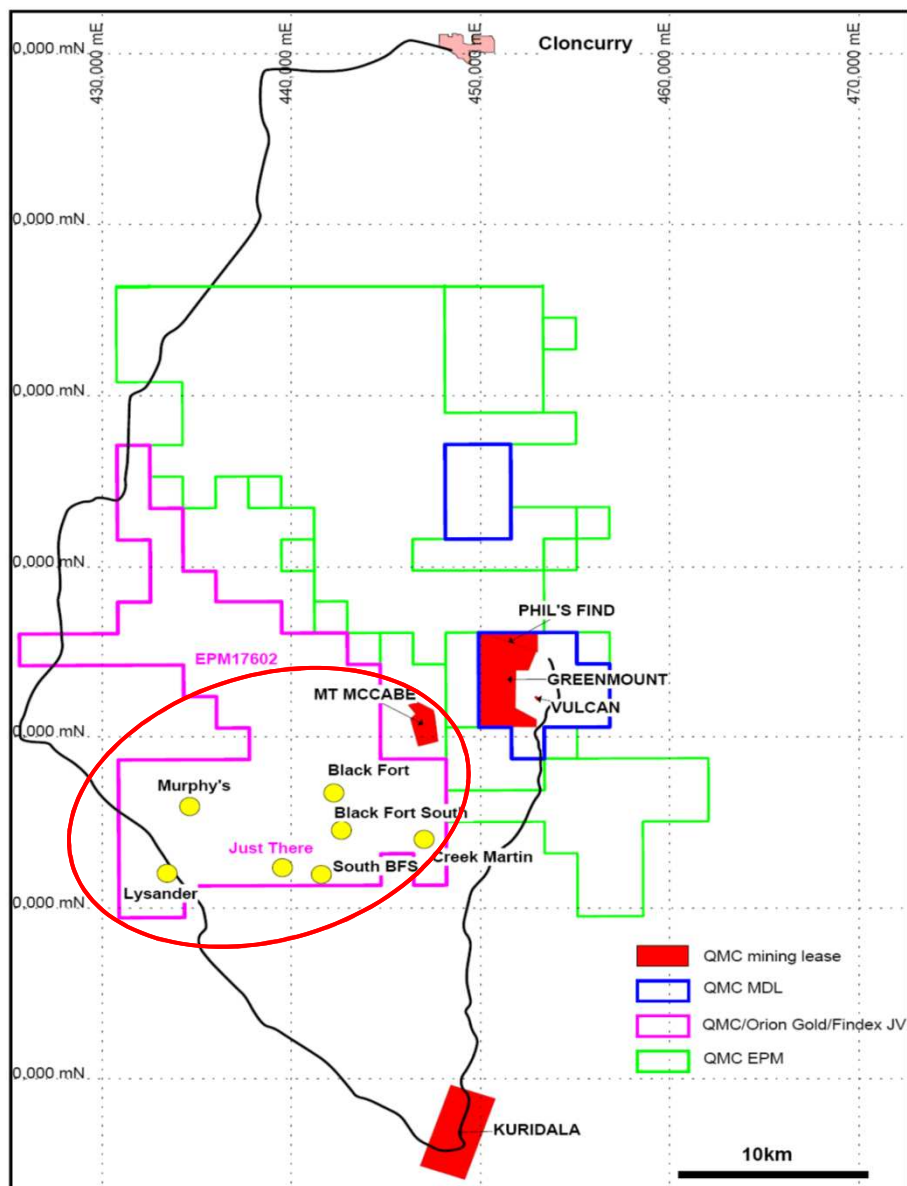


Young Australian Long Section: (Copper Grade) x (Thickness)



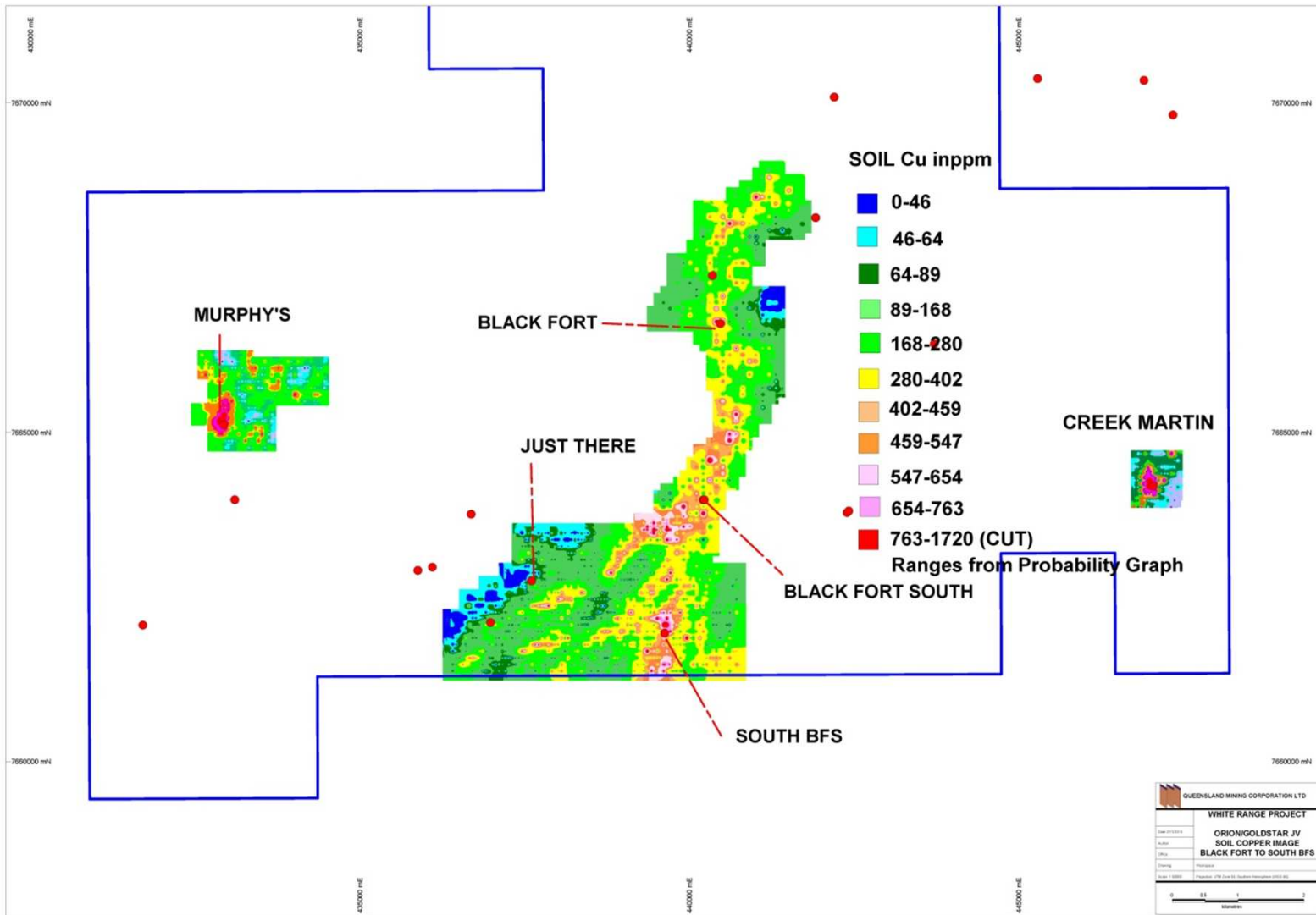
**Exploration:
Priority Drill Targets**

ORION JOINT VENTURE – TOP CAMP



- ◆ QMC earn-in EPM 17602
- ◆ 78 Sub-Blocks
- ◆ 250 Km²
- ◆ 7 IOCG Type Targets ready to be drill tested

COPPER OXIDE DRILL TARGETS 8km SOIL Cu ZONE



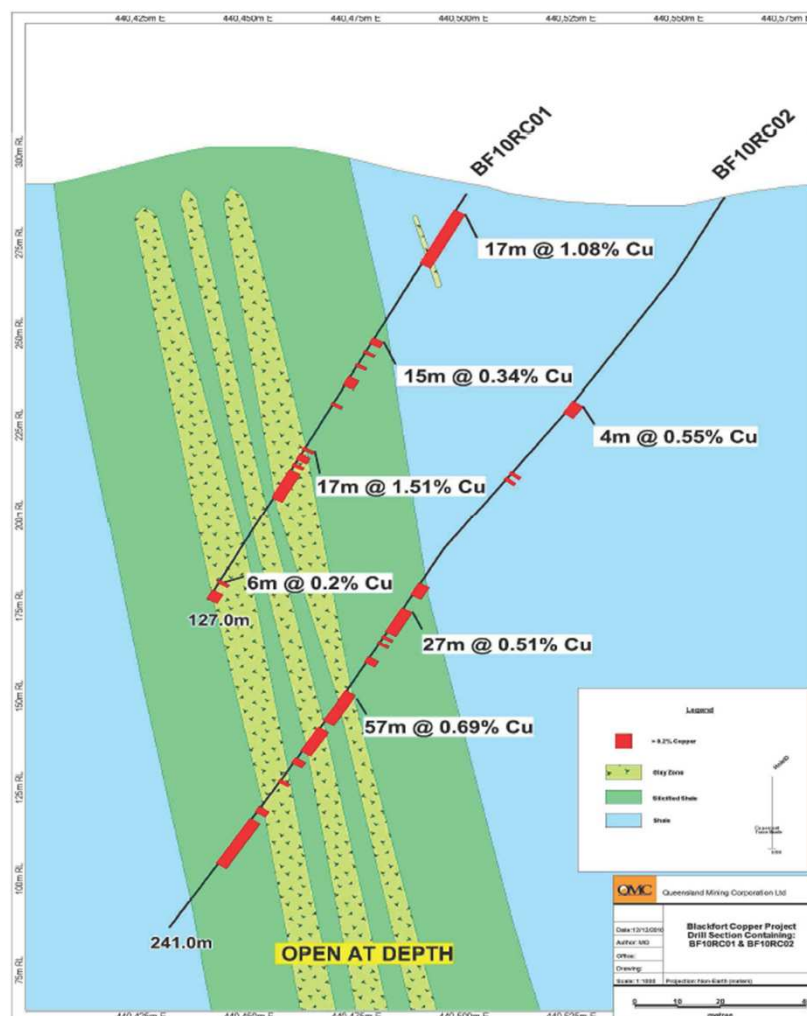
BLACK FORT – IOCG TARGET SUCCESS

Black Fort - Greenfields Discovery - Cu, Co, Ag

Highlights from 2010 drilling results:

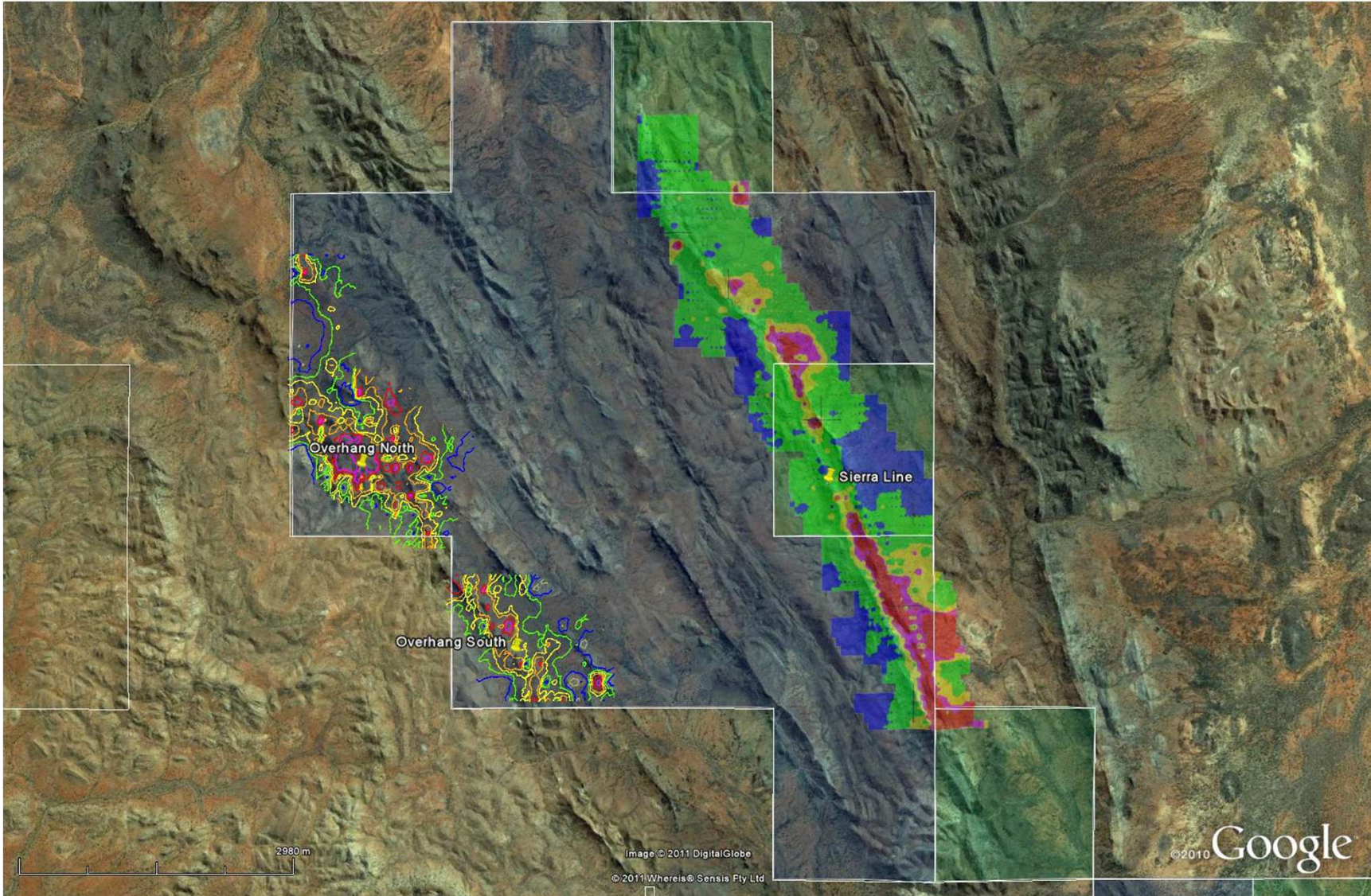
- ◆ Hole BF10RC02:
 - **27m @ 0.51% Cu and 505ppm Co from 128m**, including 7m @ 1.14% Cu and 967ppm Co from 136m;
 - **57m @ 0.69% Cu, 288ppm Co and 4.26g/t Ag from 163m**, including 12m @ 2.48% Cu and 703ppm Co from 207m
- ◆ Hole BF10RC01: **17m @ 1.08% Cu, 693ppm Co** and 1.82g/t Ag from near surface, and 17m @ 1.51% Cu, 474ppm Co and 7.22g/t Ag from 78m
- ◆ Mineralised zones are open along strike and at depth; Geological interpretation is underway with follow-up diamond and RC drilling in 2H 2011

Note: QMC 70% interest in the Black Fort EPM



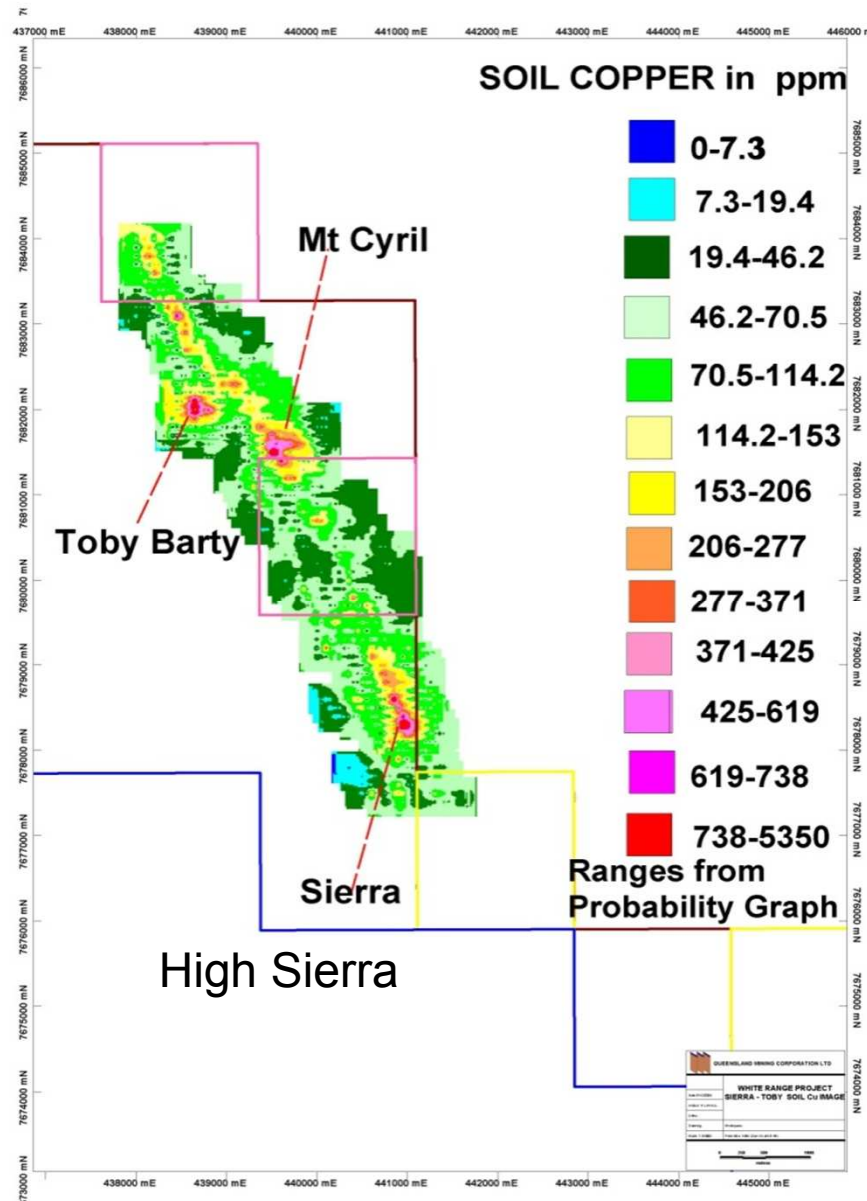


EPM 15897 Sierra Line – Copper and Molybdenum



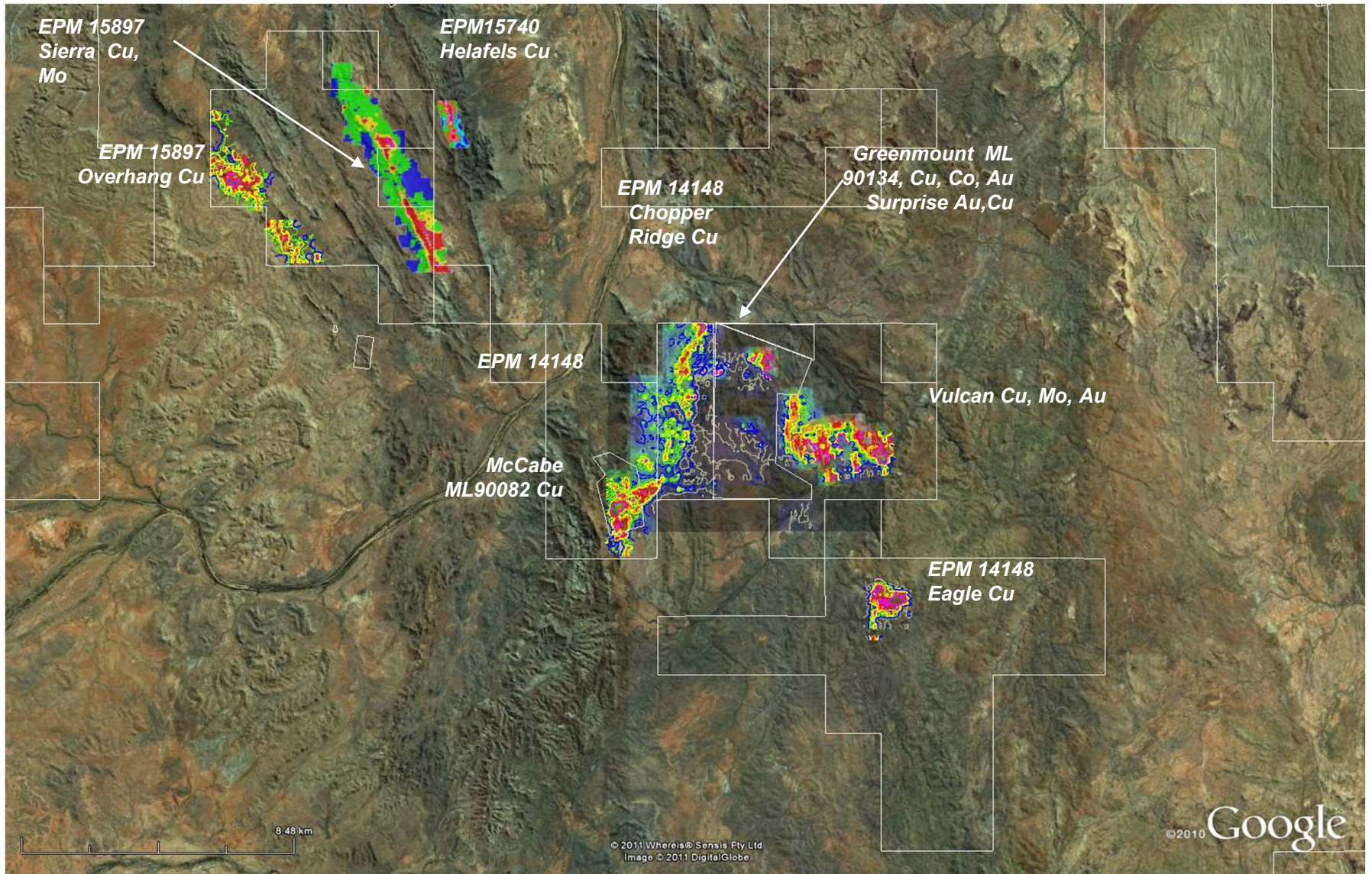
Overhang Soil Geochem (Cu) and Sierra Soil Geochem (Mo) - 7km

SIERRA-TOBY COPPER OXIDE + SIERRA LINE SULPHIDE DRILL TARGETS 7km SOIL Cu ZONE





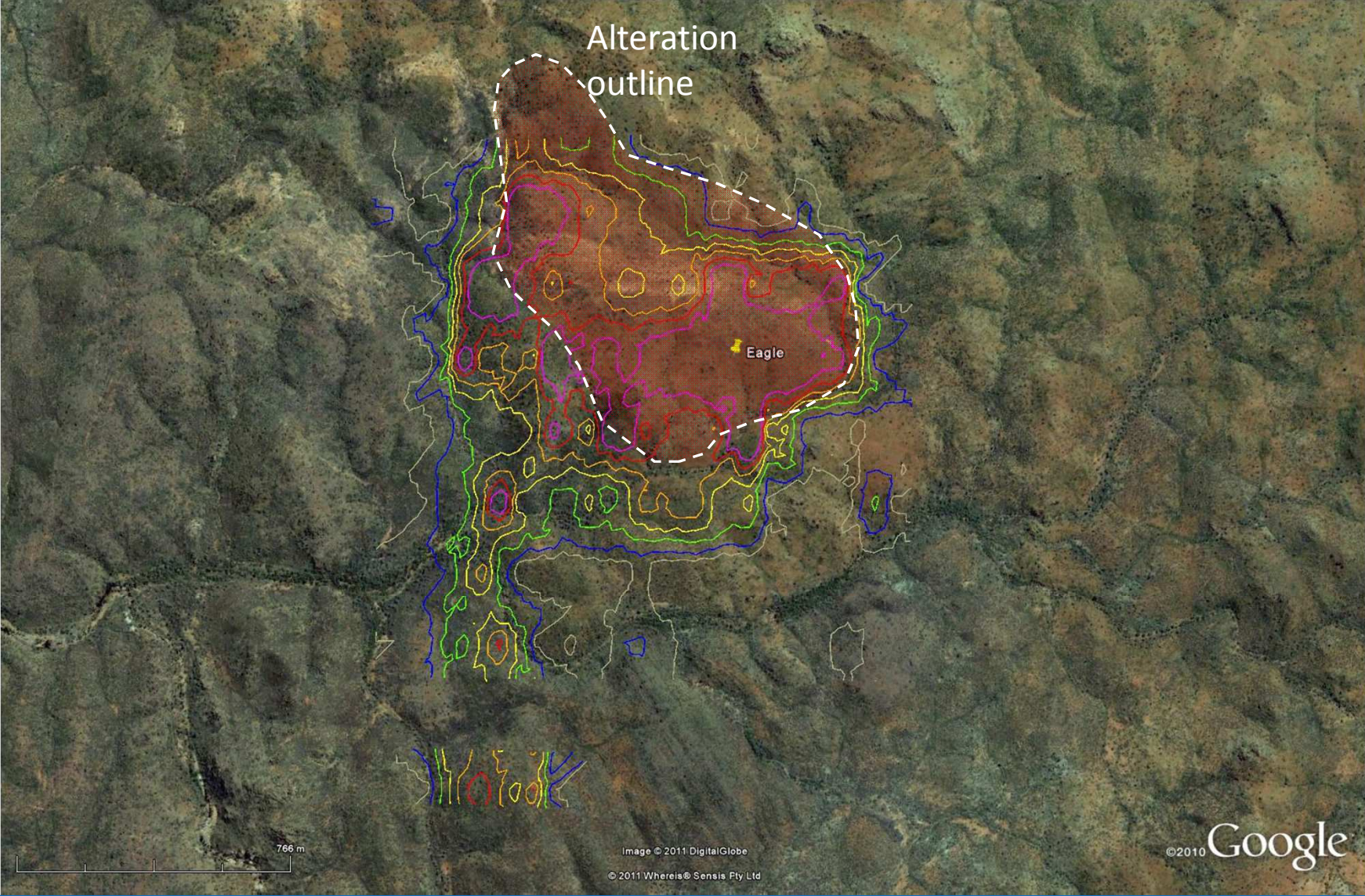
WHITE RANGE PROJECT



Soil geochemical anomalies

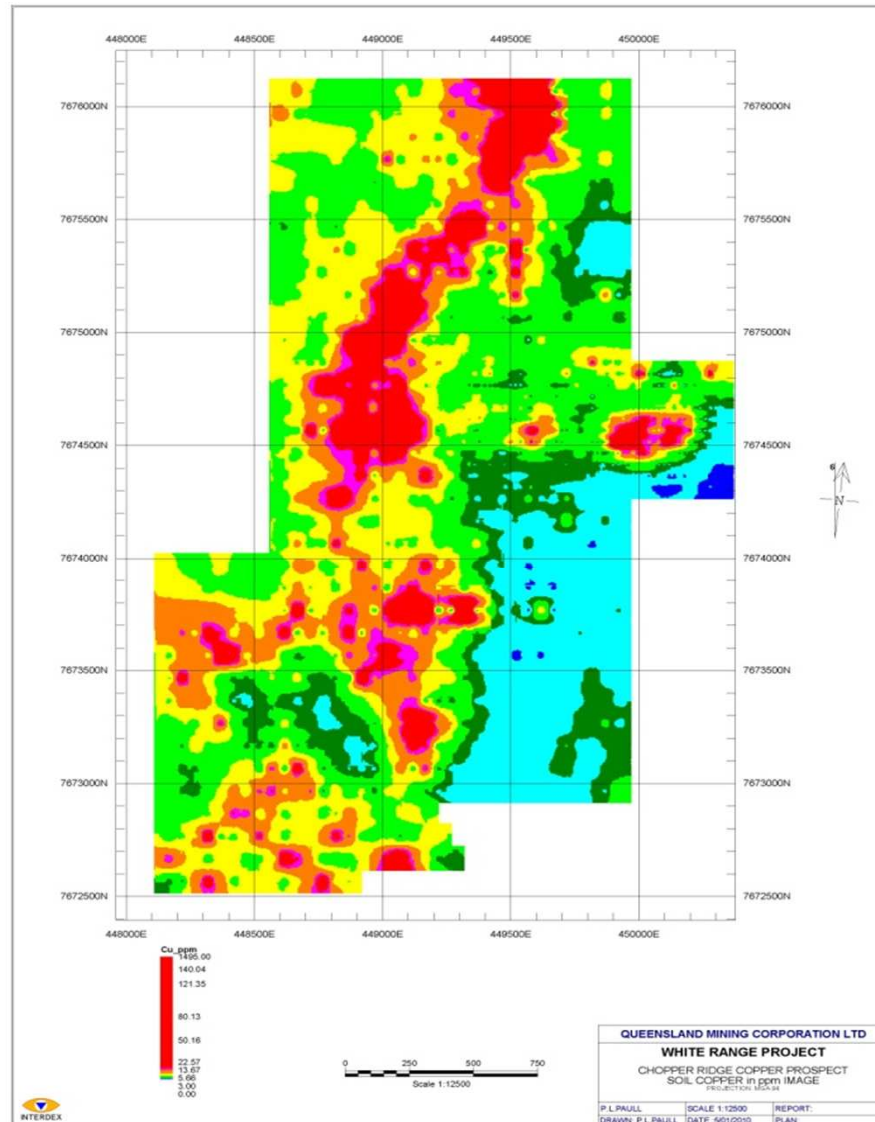


WHITE RANGE PROJECT – Eagle Rock



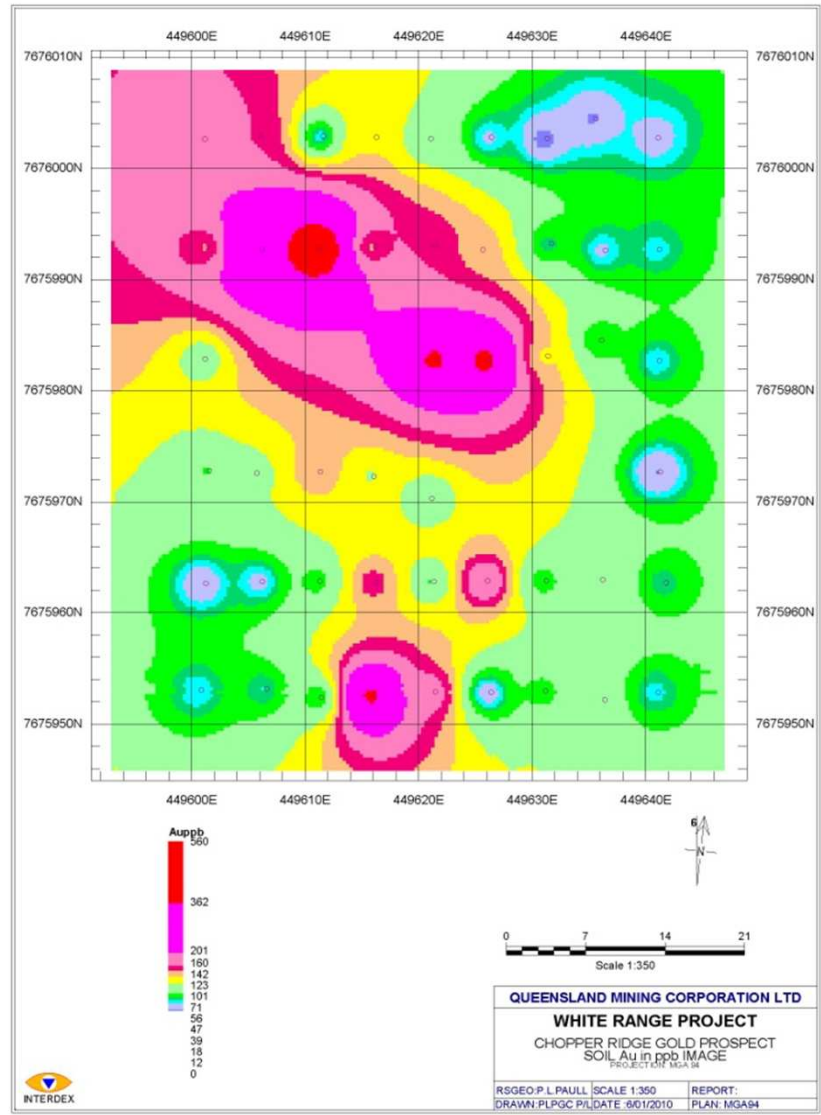
Eagle Prospect Soil Geochemistry - Copper

CHOPPER RIDGE - COPPER PROSPECT



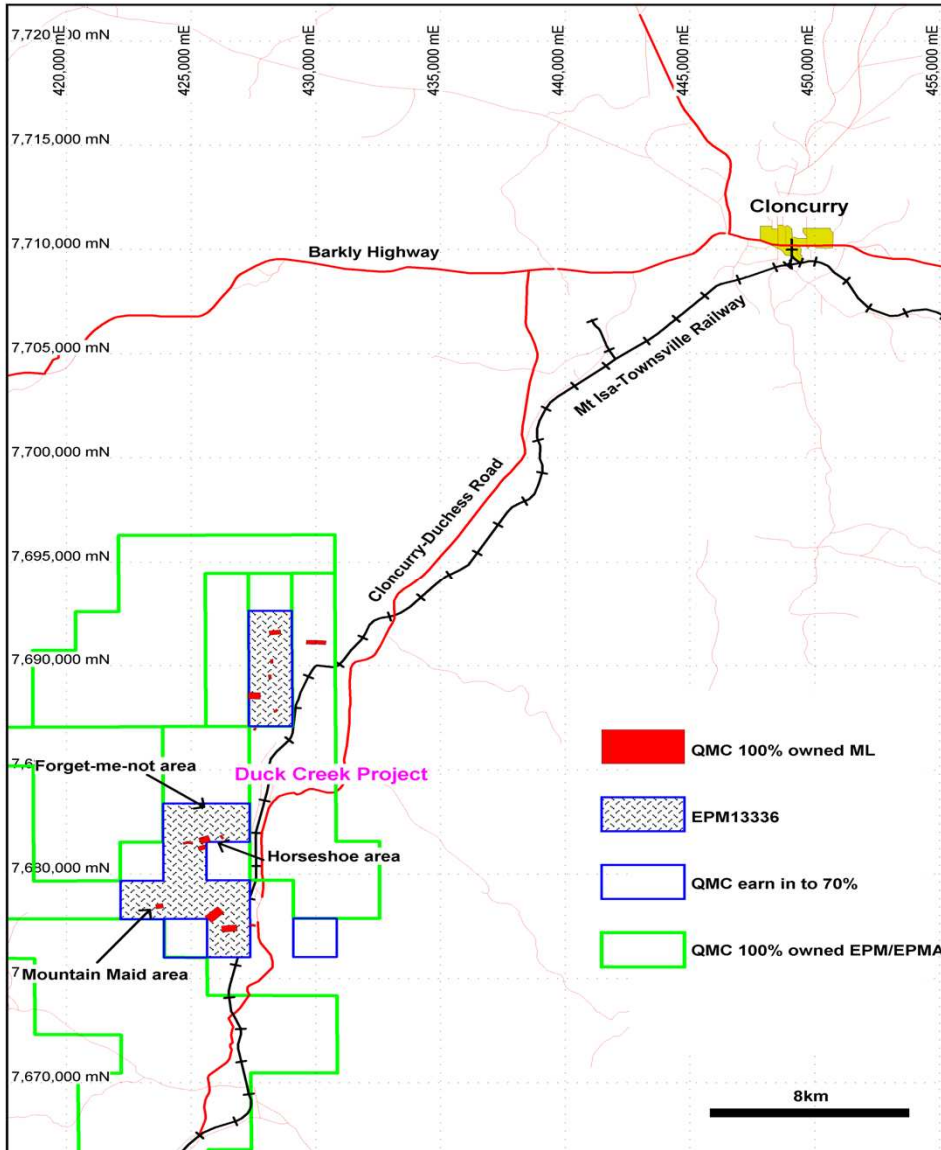
Soil copper Geochem – adjoins Greenmount ML on the western boundary

CHOPPER RIDGE (cont)- GOLD PROSPECT



Soil copper Geochem – adjoins Greenmount ML on the western boundary

WHITE RANGE REGIONAL - DUCK CREEK

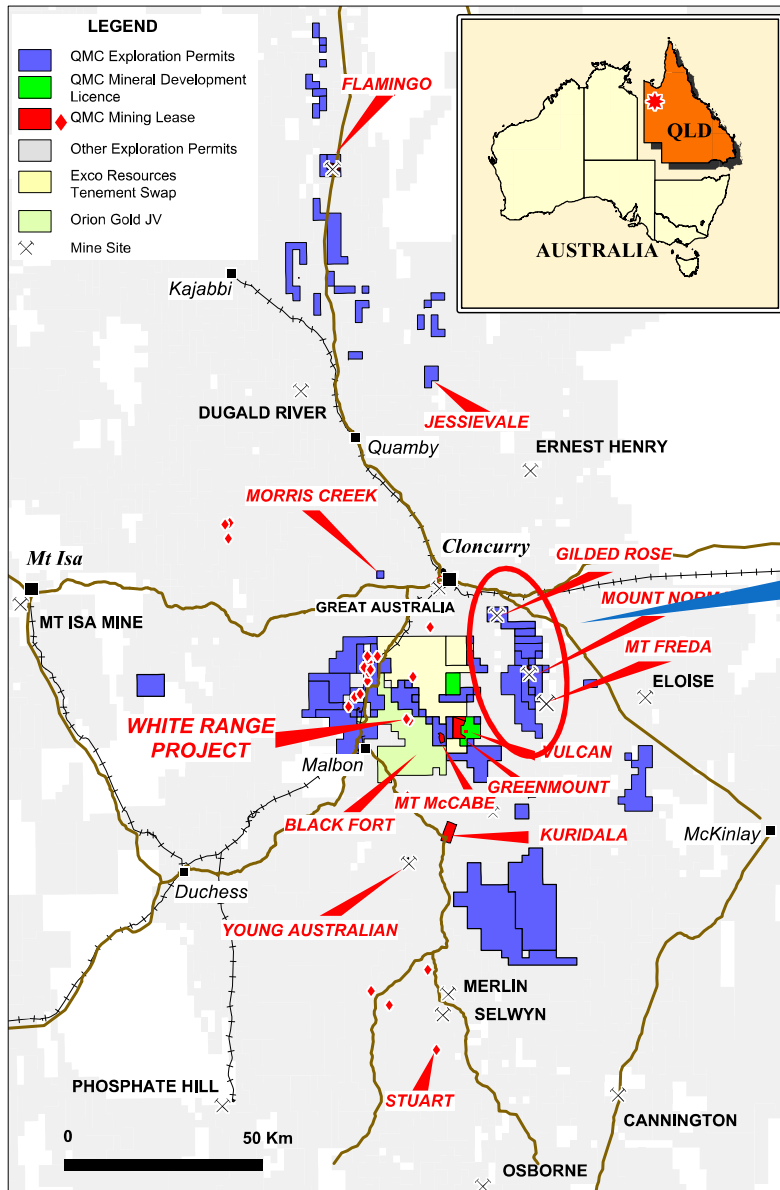


Duck Creek Project Location:

52 RC holes drilled July to Sept 2011,
results pending
(ASX announcement 8 Sept 2011)

**Gold Assets:
adding value**

QMC's CLONCURRY GOLDFIELDS



Malachite Resources (ASX:MAR) Sept 2010 purchase of Lorena deposit - \$21m paid for 78,000 oz high grade resource just east of Cloncurry.

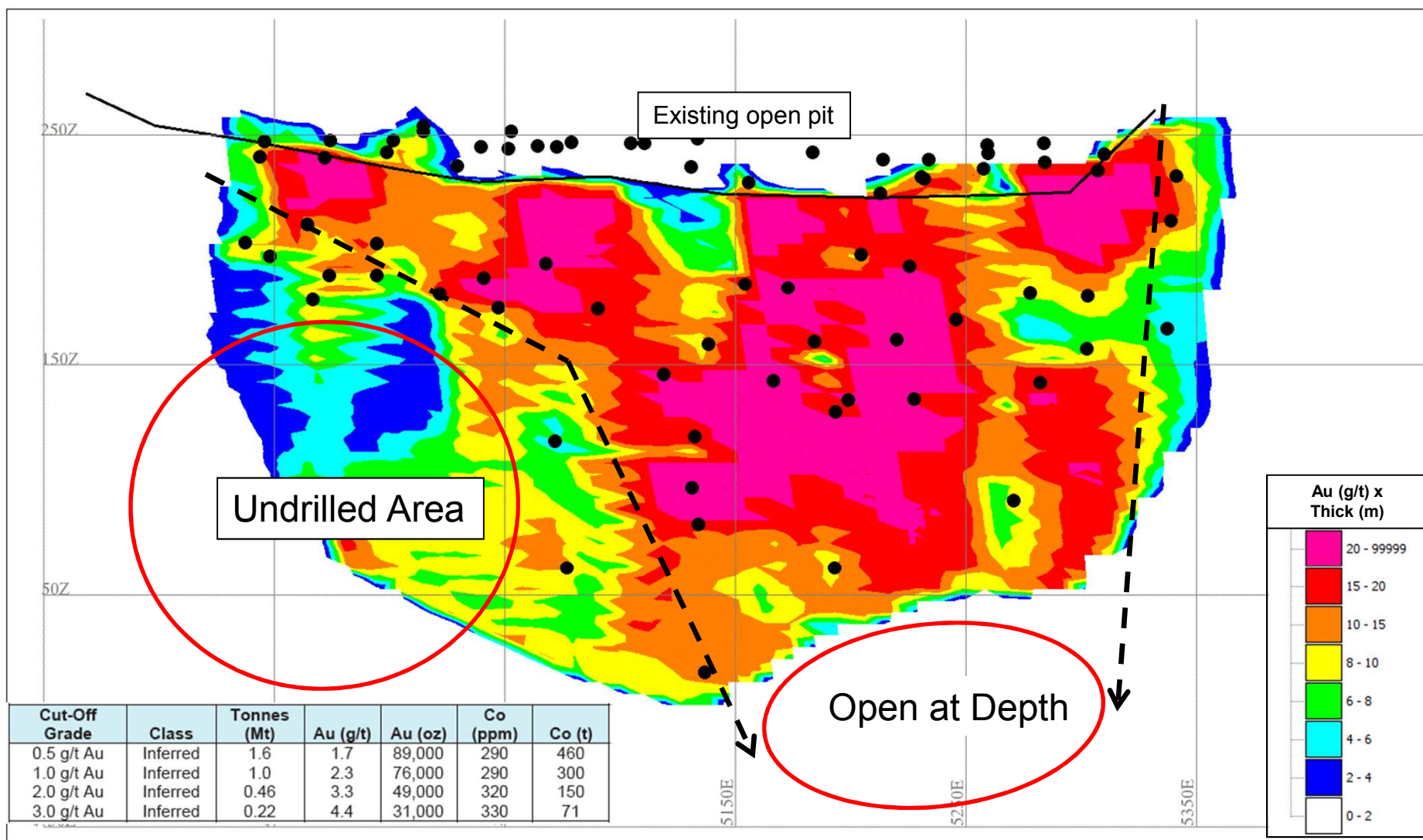
Mt Freda and Gilded Rose – combined 108,000 oz

Cloncurry Goldfields: 108,000 Oz Au (Mt Freda, Gilded Rose)

- QMC Gold-Processing plants
- ◆ Gilded Rose plant
 - ◆ Mt Freda plant
 - ◆ Duck Creek Group

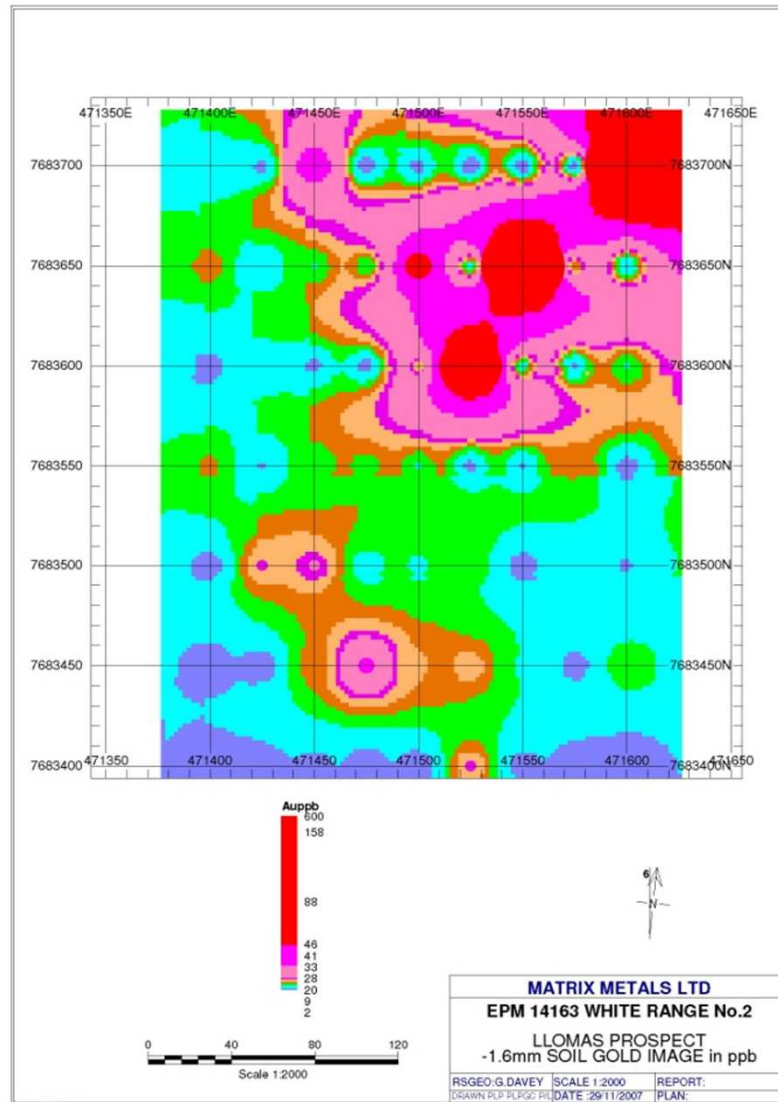
Mt FREDA GOLD DEPOSIT

Long Section: (Gold Grade) x (Thickness)



WHITE RANGE # 2 EPM 14163 LLOMAS

ADJOINS MT FREDA GOLD MINE



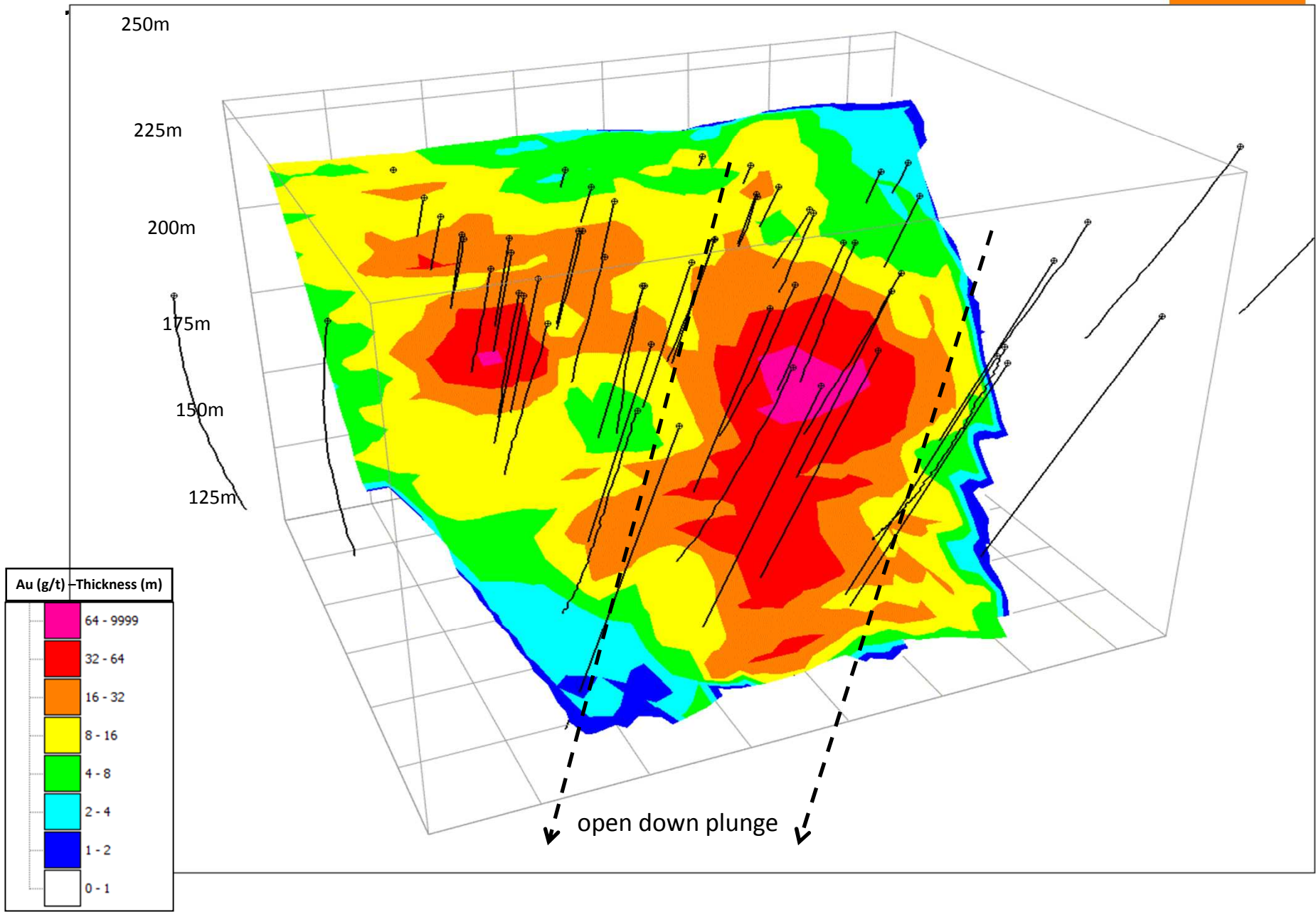
Soil Gold Image

GILDED ROSE GOLD DEPOSIT

Gilded Rose Gold Project

- ◆ 143,000t @ 4.2g/t Au for **19,400 oz** (at 0.5g/t cut-off) (Indicated and Inferred)
- ◆ Drilling in 2H 2011 to test along 1km strike & down dip + increase JORC confidence level
- ◆ Workings within 1 km to the east to be investigated at Gilt Edge, Silver Lining
- ◆ Located on 4 granted Mining Leases over an area of 66.4ha; EPM covers 35sq km
- ◆ Crushing and milling circuit, Carbon-in-Leach processing plant and authorised waste management facility on site.

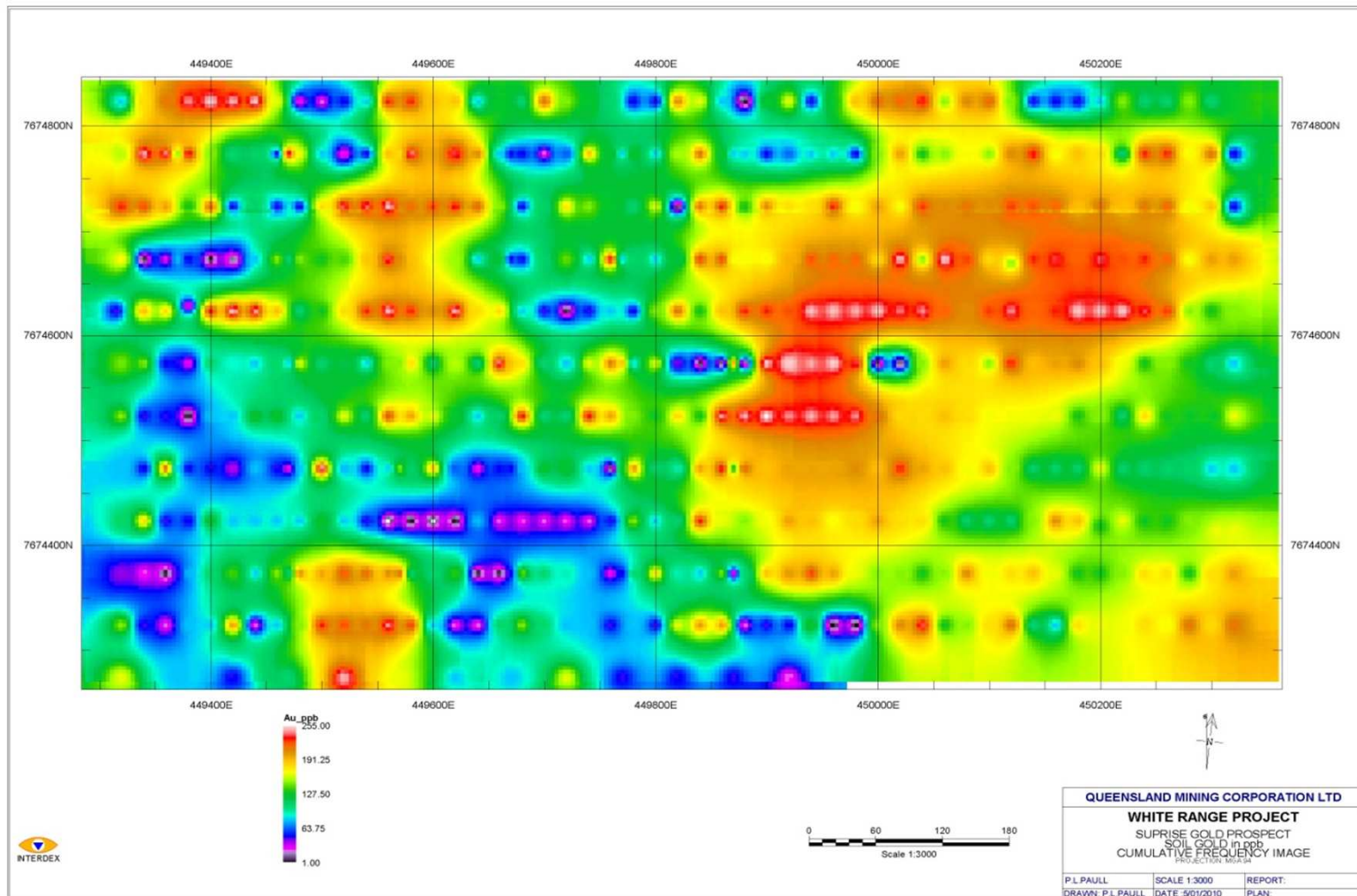
GILDED ROSE - 3D View



SURPRISE GOLD PROSPECT – on Greenmount ML



2011 SEASON DRILL PROGRAM:

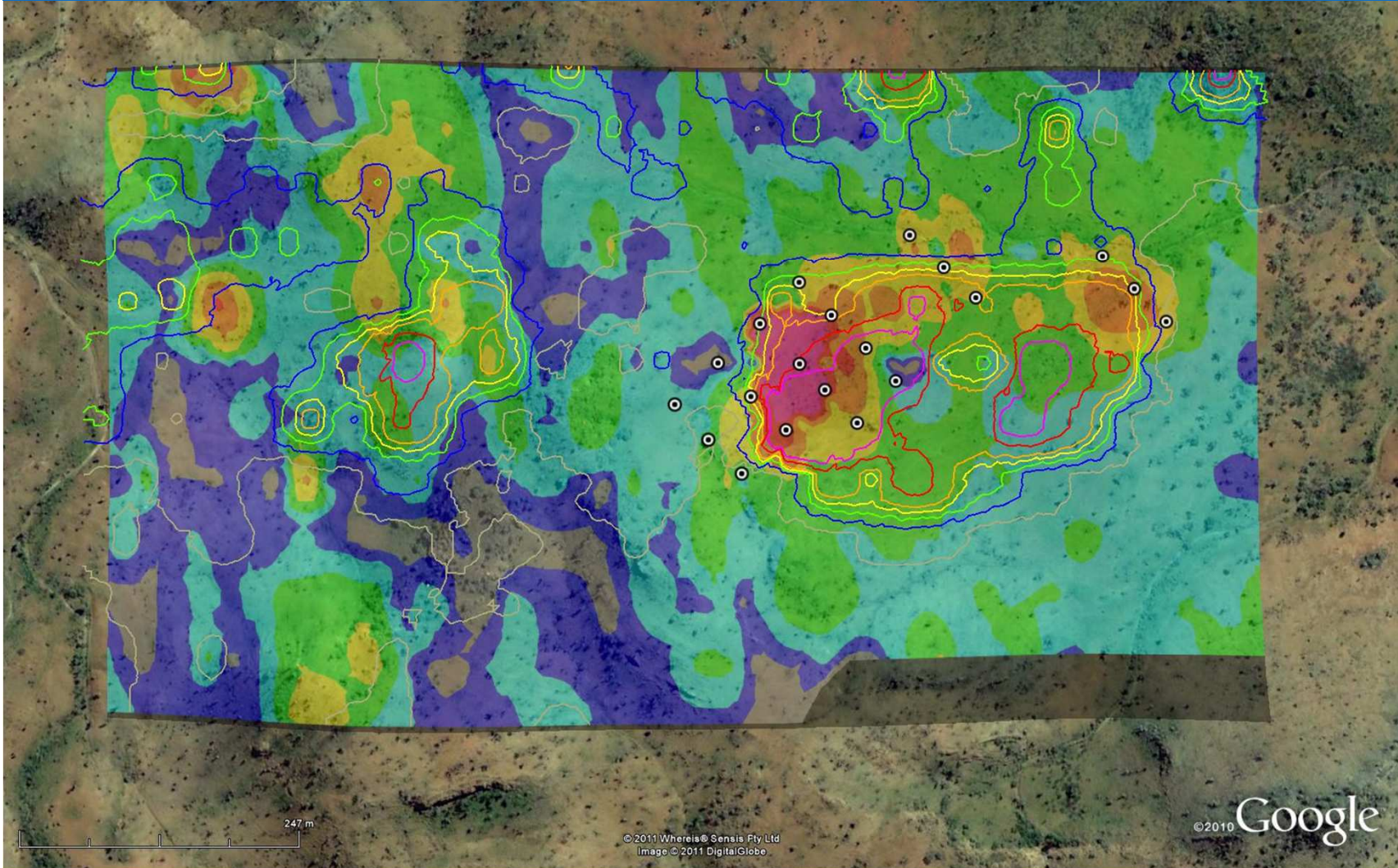


Soil geochemistry contours

SURPRISE GOLD PROSPECT – on Greenmount ML



2011 SEASON DRILL PROGRAM:

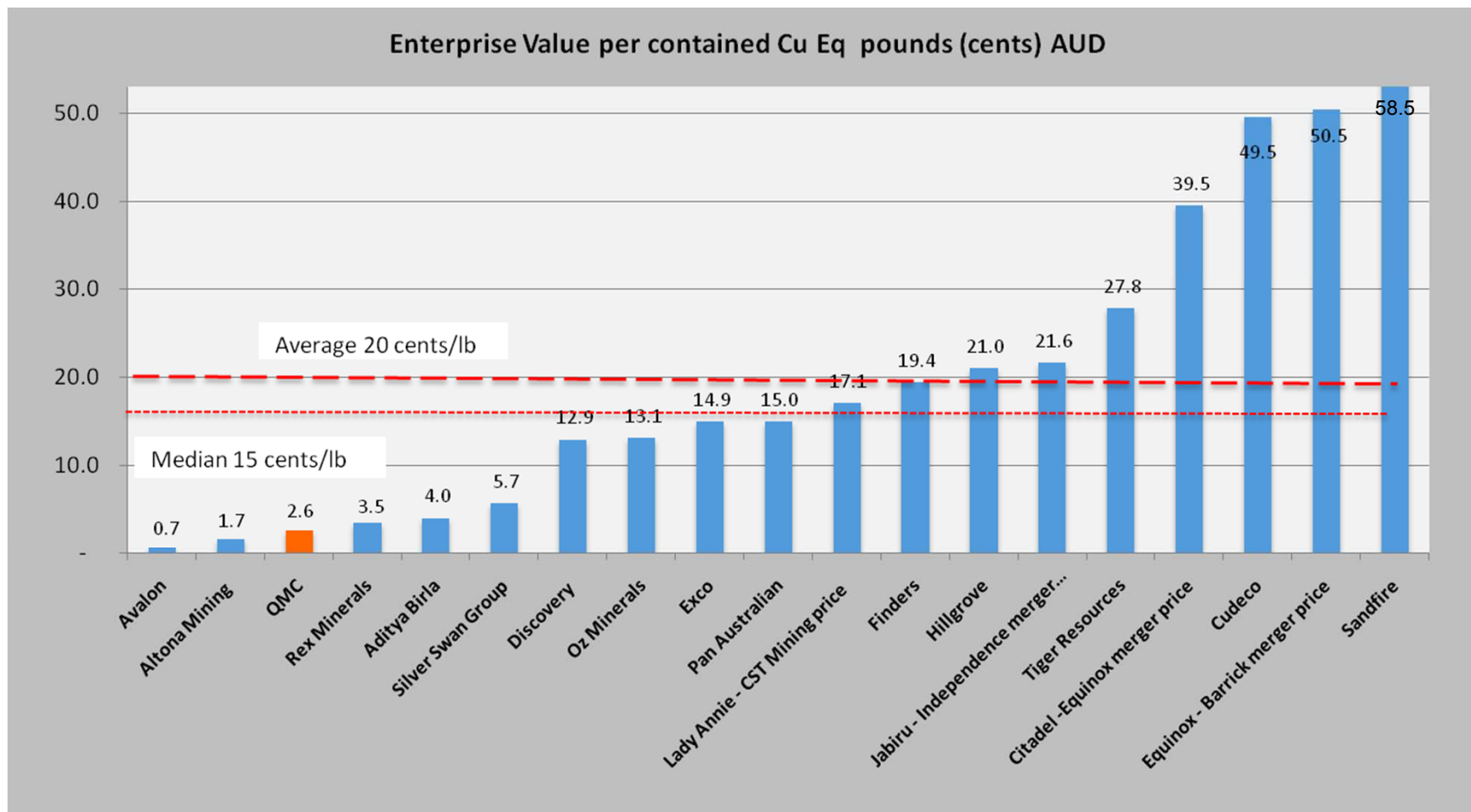


Soil geochemistry – Au overlaid with Cu contours

Valuation Metrics and Conclusion

2011 QMC EV PER TONNE CuEq IN JORC RESOURCES

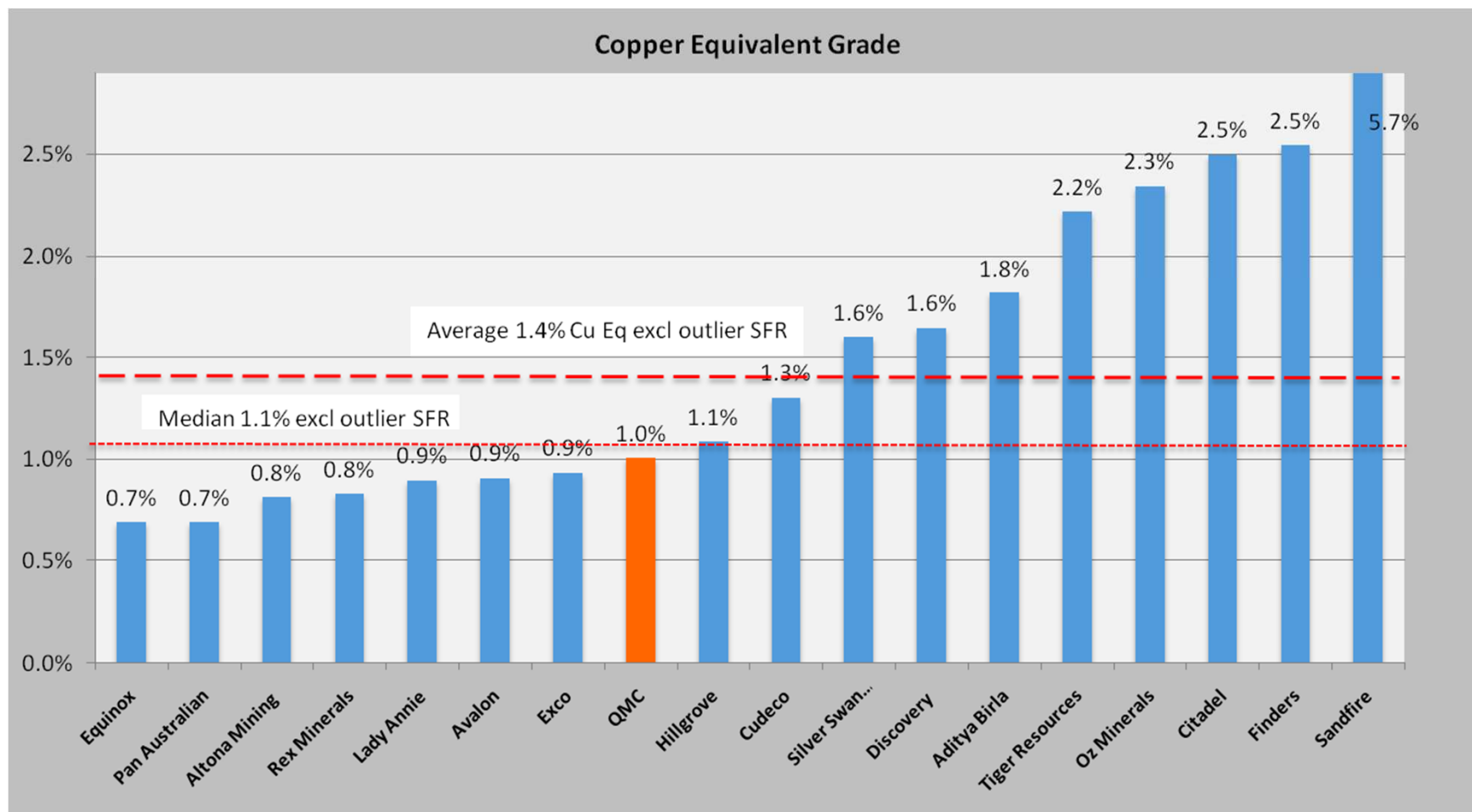
Significant Value Up-Side



Source: CK Locke and Partners Research, 23 June 2011, adjusted for ASX share prices, copper price and other base metals and uranium price from Bloomberg, 7 October 2011; based on USD1.00 = AUD 0.977; no adjustment made for project specific metallurgical recoveries unless reported

2011 QMC CuEq Grade of JORC Resources

'Grade is king': QMC favourable open cut grade compared to industry peers



Source: CK Locke and Partners Research, 23 June 2011, adjusted for ASX share prices, copper price and other base metals and uranium price from Bloomberg 7 October 2011; based on USD1.00 = AUD 0.977; unless reported, no adjustment made for project specific metallurgical recoveries

2011 CORPORATE ACTIVITY IN CLONCURRY REGION



◆ **June 2011 – EXCO Sale to Xstrata:**

-Price: **\$175 million for 401,000 contained tonnes of copper** in the ground (E1, Monakoff and Monakoff East deposits, total of 52.2Mt @ 0.77% Cu, (using mostly 0.3% cut-off); **equivalent to 19.8 cents/lb of copper.**

◆ **QMC’s enterprise value is only 2.6 cents per JORC pound of copper equivalent; sector average is 20 cents**
(based on copper, other commodity prices and USD/AUD exchange rate at 7 October 2011)

Current Enterprise Value	@ 20.0 cents per pound CuEq.
\$21 million	\$161 million*

- *This is before attributing any value to the Company’s gold assets

◆ **30 April 2011 – Exco reported:**

*‘Copperchem has advised Exco that is commenced mining at the Great Australian in Cloncurry. Exco is entitled to a royalty on 1.7 million tonnes of sulphide ore contained within the Great Australia resource. Based on prevailing LME Cu price this royalty is estimated to be in the order of **A\$19 to A\$20 per tonne of ore mined.**’*

◆ **IVANHOE announced on 14 September that the company’s planned Mount Dore Cathode Copper Project in north-western Queensland would provide robust long-term cashflows for a modest capital outlay**

VALUE DRIVERS AND CATALYSTS IN COMING MONTHS



Exploration Results	From “Tier 1” targets: 30,000 metre drilling program commenced July 2011, first phase results pending (Duck Creek, ASX 8 Sept)
White Range Progress	Advance feasibility study including in-fill drilling to increase confidence level of JORC resources, obtain metallurgical core and optimization
Cash Flow	Conclusion of negotiations with third parties for sale of ore for fixed price per tonne from “Tier 3” deposits
Tenement Swaps	Completion of negotiations to secure upside exploration where mineralization is contiguous with present QMC ground
Gold Assets	Possible farm-out /JV with regional players or spin out to take advantage of strong gold price and existing company infrastructure

SUMMARY



High Quality Copper Assets	✓	<ul style="list-style-type: none">- Core Asset: White Range has 231kt Cu and growing- Historic BFS being updated
World class copper province	✓	<ul style="list-style-type: none">- QMC has large land holdings in one of the world's most prolific copper / base metals regions
Leveraging Existing Infrastructure	✓	<ul style="list-style-type: none">- Independent and uncommitted Company, building JV and alliance arrangements in sharing:<ul style="list-style-type: none">- resources- processing facilities- infrastructure
Attractive Low-Capex Projects	✓	<ul style="list-style-type: none">- 20 to 25ktpa Cu in cathodes from oxides- Plus 5 to 10ktpa Cu in concentrates from sulfides (3rd party treatment)
Emerging Regional Gold Project	✓	<ul style="list-style-type: none">- 108,000 oz Au resource at Mt Freda and Gilded Rose – attractive in regional context, base on which to build, possible spin out



Thank You

Queensland Mining Corporation Limited

ASX: QMN

Howard Renshaw

Managing Director

T +61 2 9251 6730

E howard.renshaw@qmcl.com.au

www.qmcl.com.au