

Rawson Resources Limited

ABN 69 082 752 985

PO Box R1868

Royal Exchange

NSW 1225

9 June 2011

**To Australian Stock Exchange
Electronic lodgements
For immediate release**

**Rawson Chairman Keynote Speaker at Energy ENEX Oil and Gas
Event in New Plymouth, New Zealand**

Rawson Resources Limited (ASX: 'RAW') is pleased to advise that John Conolly is an International Keynote Speaker at the Energy ENEX Oil and Gas Event at the TSB Stadium in New Plymouth New Zealand on Thursday 9th June 2011.

His presentation entitled 'Rawson Resources A small cap company exploring oil and gas frontiers in Australia and New Zealand' is attached.

For further information:

John Conolly
Executive Chairman
Rawson Resources Limited
0418 486 239

John Doughty
General Manager
Rawson Resources Limited
02 9255 7428

Background: Rawson Resources Ltd is primarily an oil and natural gas exploration company with interests in the Otway, Surat, Cooper and Pedirka Basins of Australia. Interests in New Zealand are held both directly and through Rawson's shareholding in Kea Petroleum Plc.

Attachment:

Rawson Resources Limited

A small cap company
exploring oil and gas
frontiers in Australia and
New Zealand

Energy ENEX,
New Plymouth

RAWSON RESOURCES
LIMITED

June 2011

Disclaimer Notice

This presentation has been prepared by Rawson Resources Limited (“Rawson” or the “Company”). It should not be considered as an offer or invitation to subscribe for or purchase any securities in the Company or as an inducement to make an offer or invitation with respect to those securities.

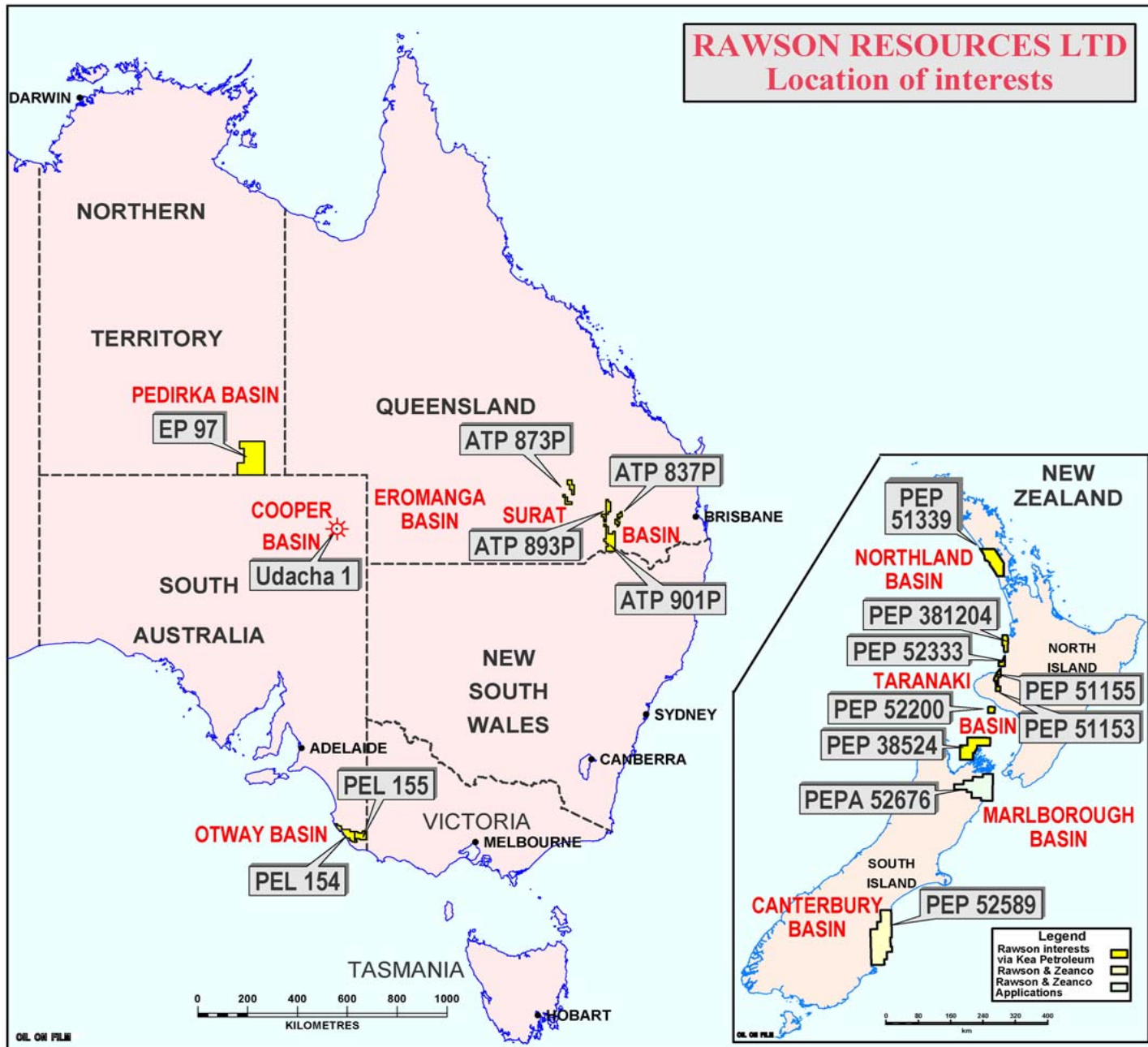
This presentation contains forward looking information. Such forecasts, projections and information are not a guarantee of future performance and involve unknown risks and uncertainties. Actual results and developments will almost certainly differ from those expressed or implied. To the maximum extent permitted by applicable laws, Rawson takes no responsibility and assumes no liability for, the authenticity, volatility, accuracy, suitability or completeness of, or any errors in or omission, from any information, statement or opinion contained in this presentation.

You should not act or refrain from acting in reliance on this presentation material. This overview of Rawson does not purport to be all inclusive or to contain all information which it's recipients may require in order to make an informed assessment of the Company's prospects. You should conduct your own investigation and perform and own analysis in order to satisfy yourself as to the accuracy and completeness of the information, statements and opinions contained in this presentation.

**RAWSON RESOURCES
LIMITED**

Rawson Resources Limited Exploration Philosophy

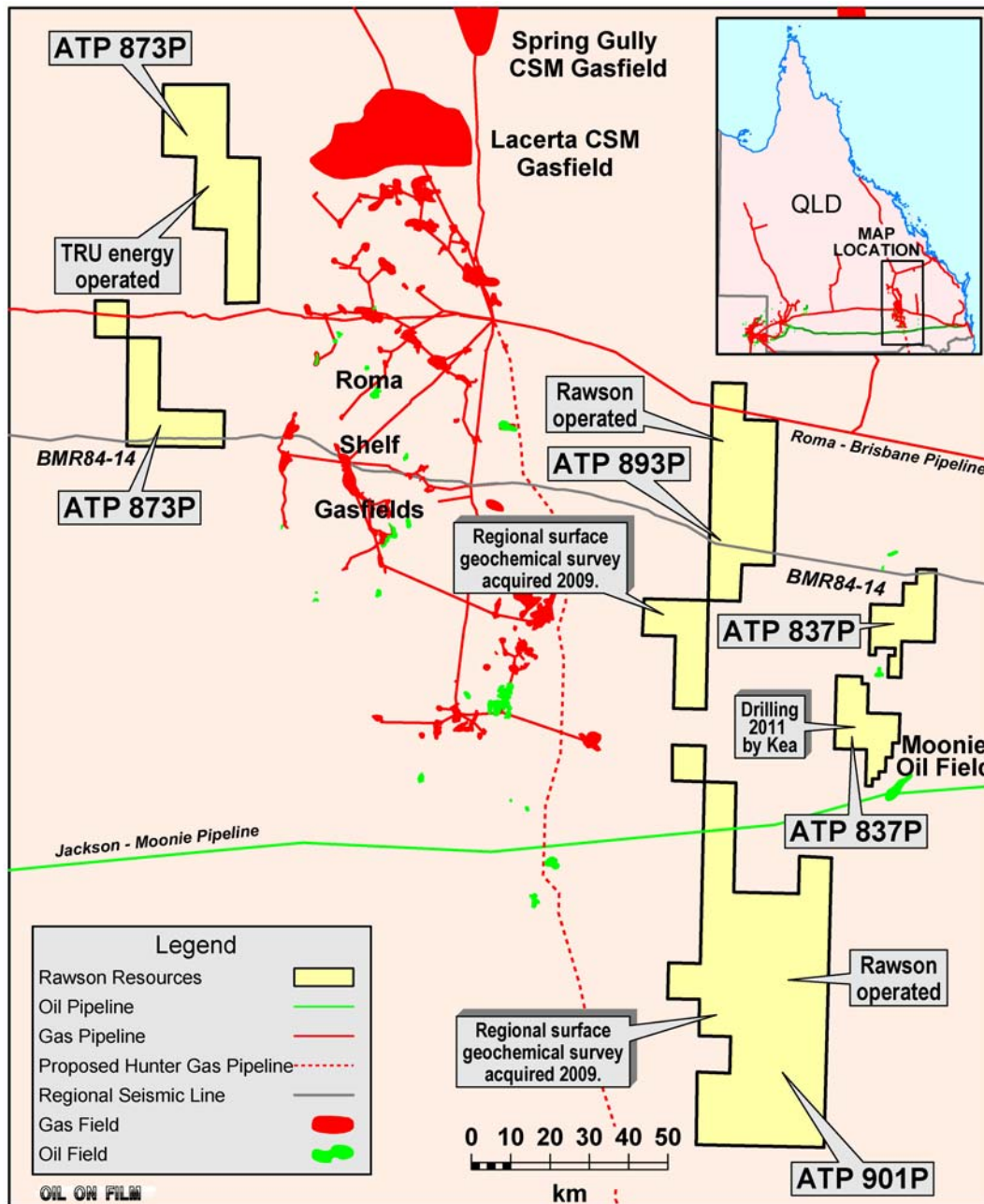
- Obtain good exploration acreage by applications.**
- Spread the exploration risk among different geological areas.**
- Operate the early stages where possible.**
- Employ ‘high skill’ technical teams.**
- Build value during these early stages with low cost geological, geochemical and geophysical programs.**
- Farmout the more expensive drilling operations.**



**RAWSON RESOURCES
LIMITED**

MAJOR PROJECTS

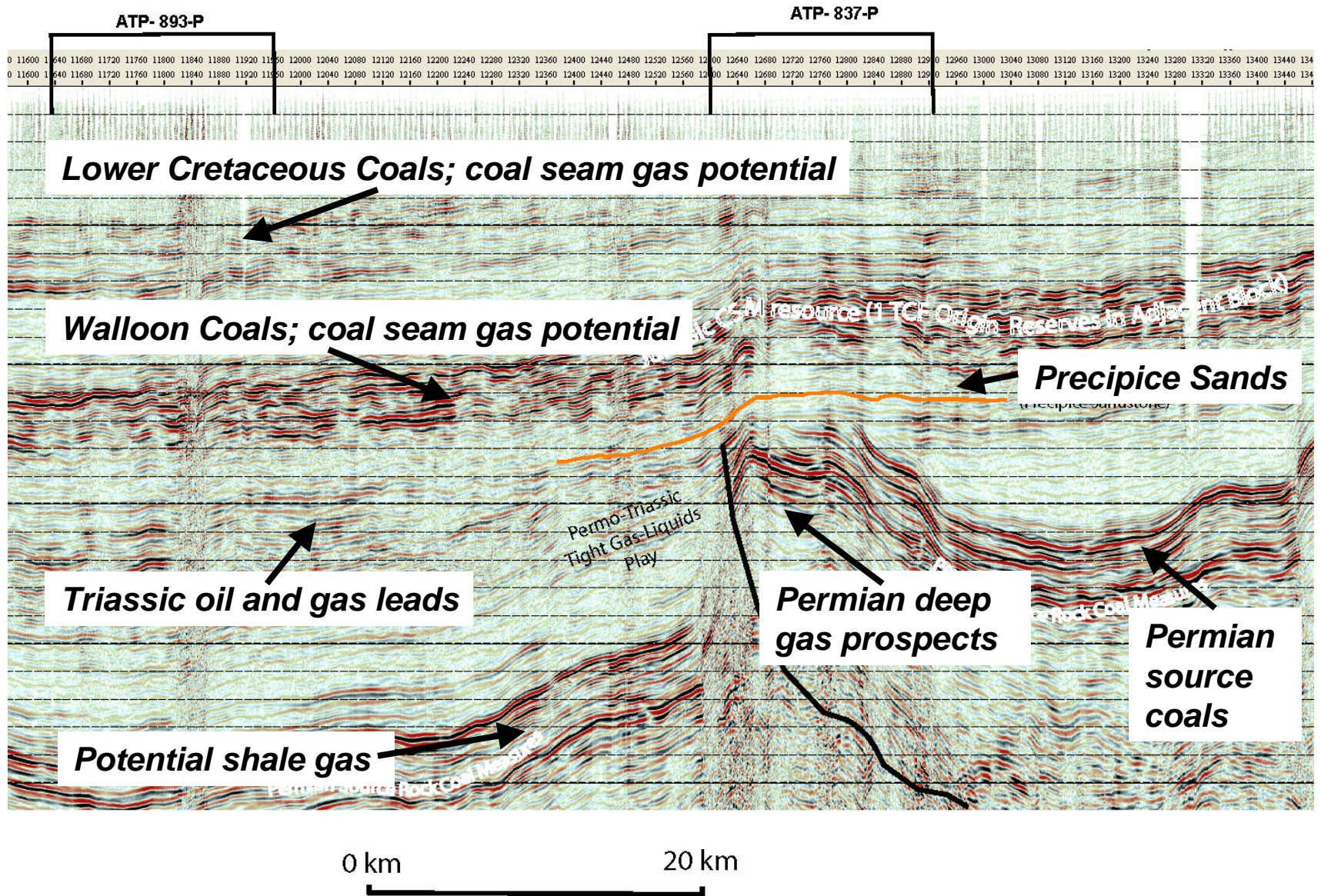
- SURAT BASIN - Four Permits; Operator in 2. 3D seismic near Moonie interpretation complete, 3 firm prospects, farmin by Kea and the drilling of 2 wells in 2011.**
- PEDIRKA BASIN – EP97 operator. Central Petroleum operated and paid for a farmin well Simpson-1, which had a 17m residual oil column. Further seismic acquired last year to locate future drilling prospects, such as Madigan.**
- NEW ZEALAND – Shareholding in operator Kea Petroleum, Taranaki. Rawson awarded PEP 52589 in Canterbury Basin South Island Marlborough Basin application progressing.**
- OTWAY BASIN – Shareholding in operator Otway Energy. 3D seismic over 2 drilling locations, farmin by Kea and drilling in 2011.**



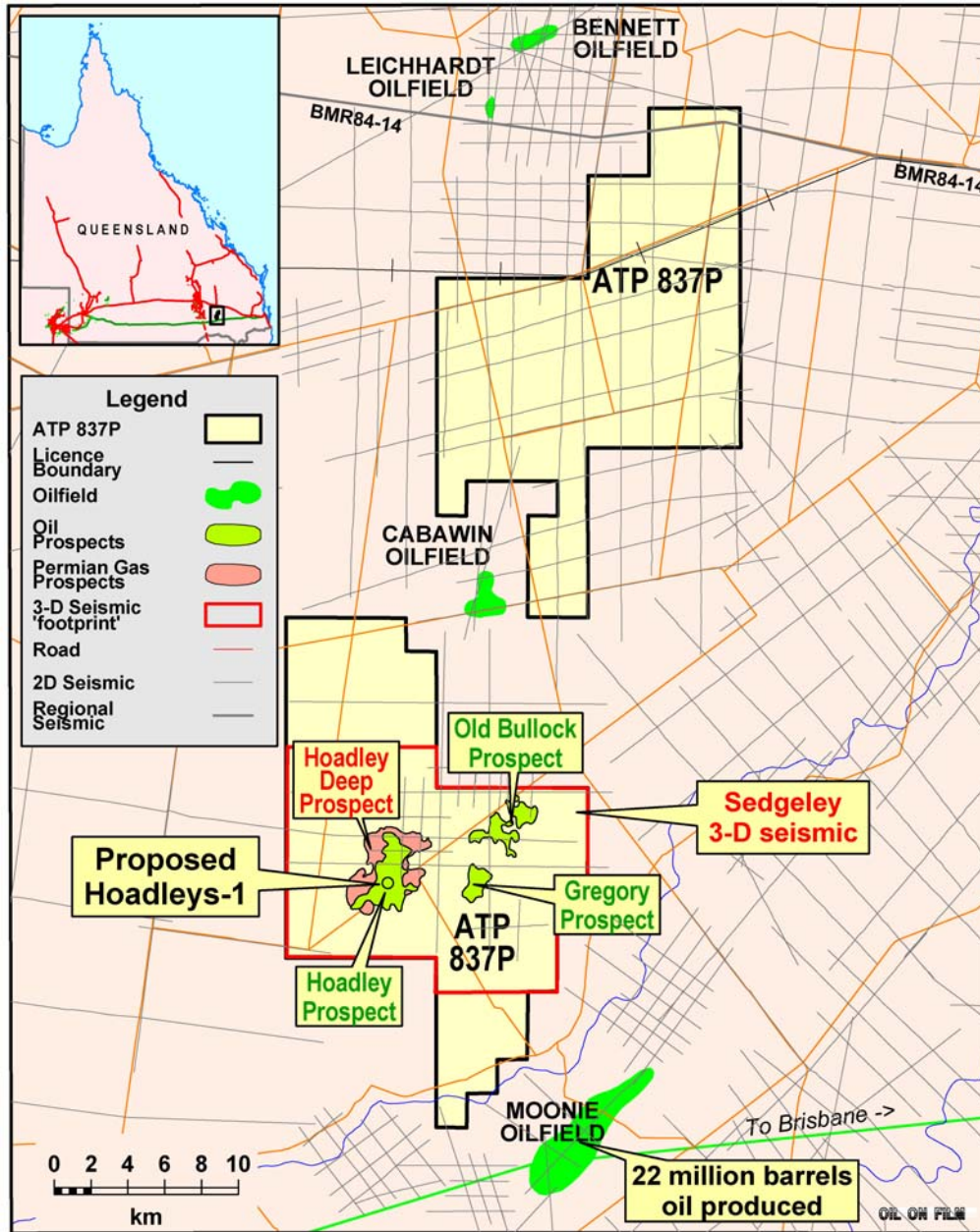
Surat Basin Permits

- All areas close to local infrastructure.
- ATP 837P Oil, Gas & CSG targets.
- Drilling of Hoadleys-1 oil prospect in 2011 by Kea Petroleum in ATP 837P, plus one other well.
- ATP 873P 3 CSG wells drilled by TRUenergy.
- ATP 893P & ATP 901P targeting Oil, Gas and CSG. Shale gas potential is currently being evaluated.

REGIONAL SEISMIC LINE ACROSS THE SURAT BASIN (Line BMR84-14)



ATP 837P Location Map

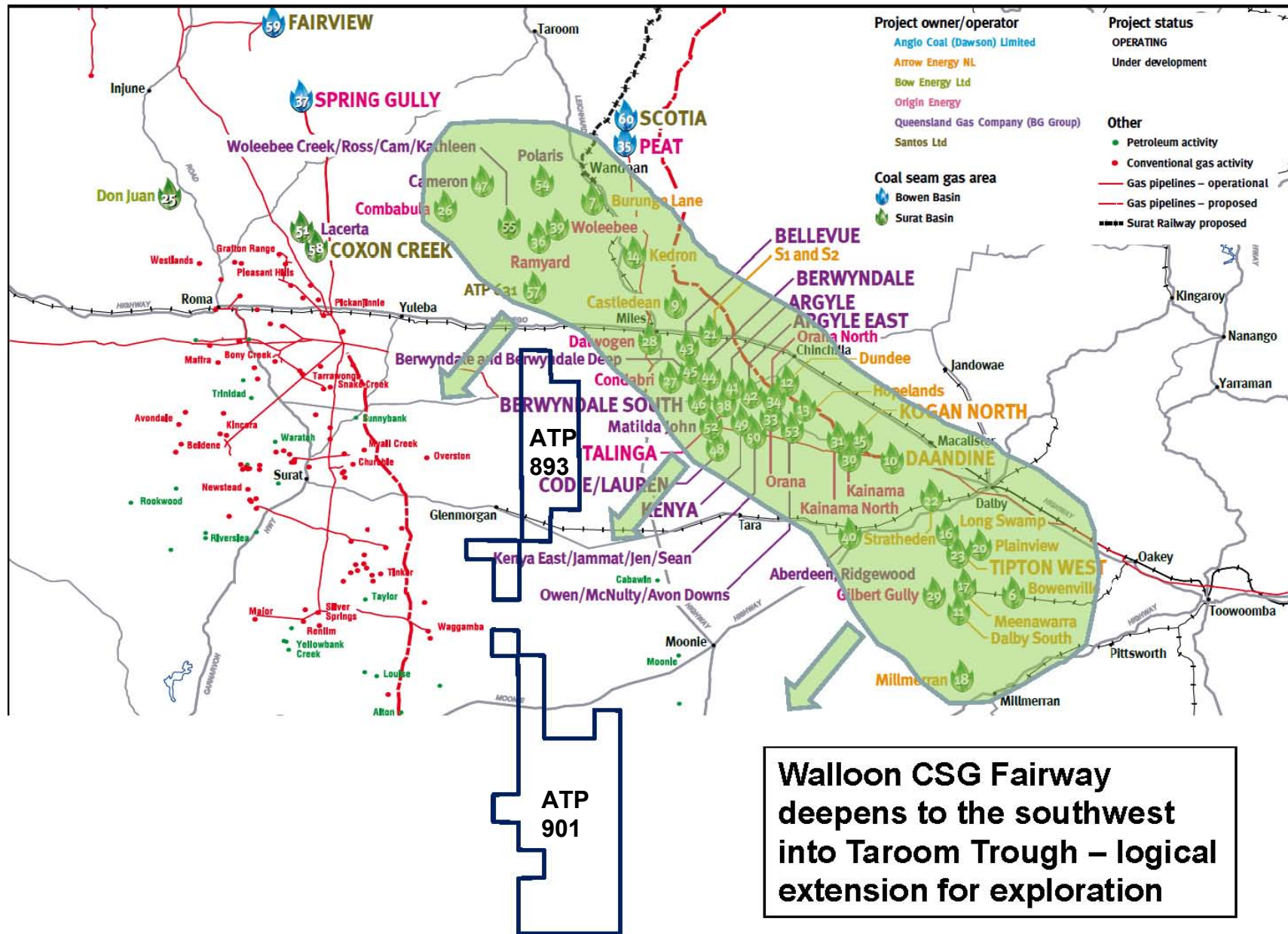


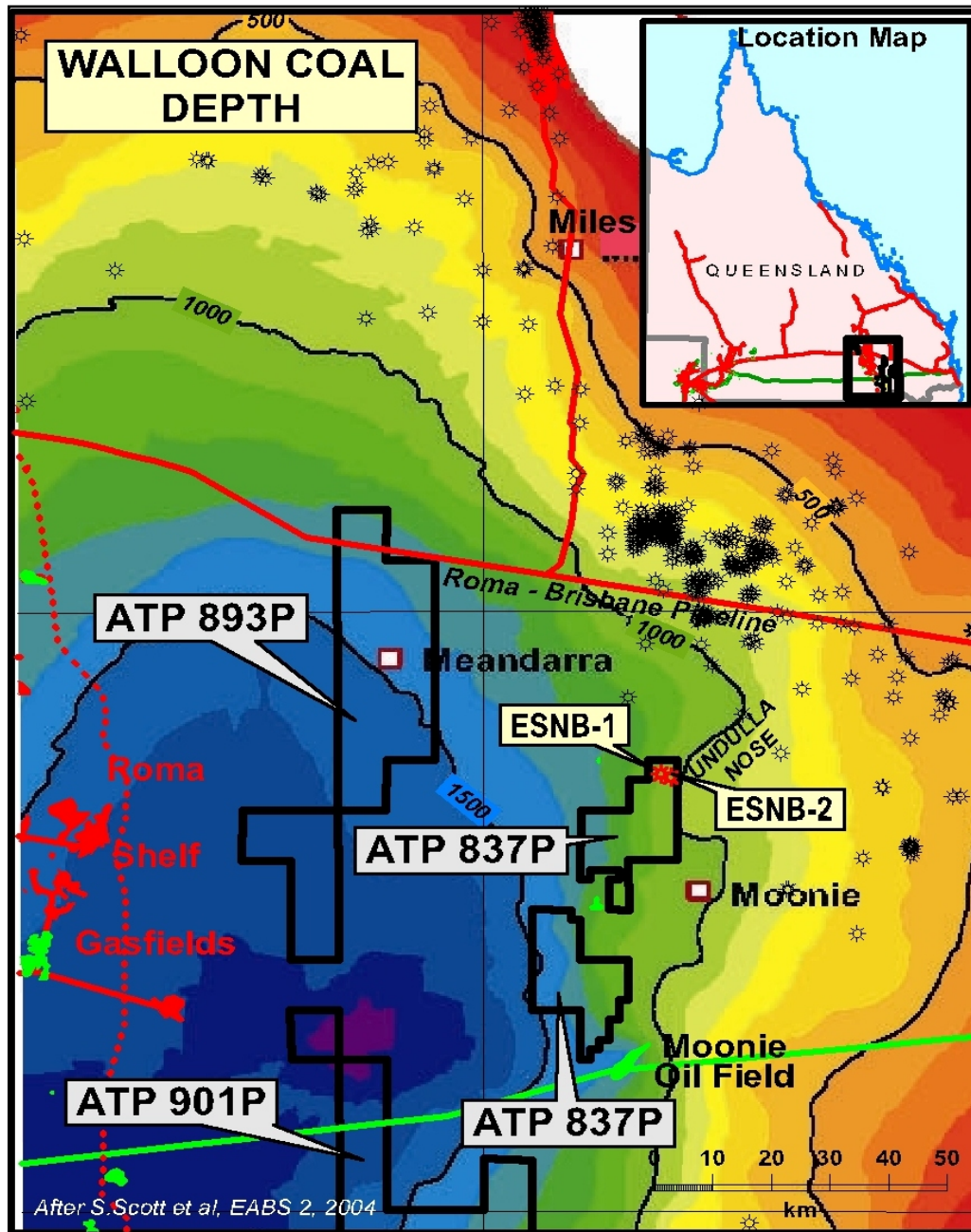
RAWSON RESOURCES LIMITED

ATP837P Oil Project

- A 200 sq km 3D seismic survey was acquired in 2009.
- KEA Petroleum Plc. has farmed in to drill **Hoadleys 1** plus 1 well, to earn 50% of ATP 837 .
- The **Hoadley Prospect** covers 8.25 sq km and could contain a potential resource up to 12 million barrels of oil. The Deep Prospect covers 12 sq km. It could contain a potential resource of 100 PJ gas and 0.5 million barrels of liquids.
- The **Gregory Prospect** covers 2 sq km and could contain a potential resource of 8.5 million barrels of oil.
- The **Old Bullock Prospect** covers 7 sq km. It could contain a potential resource of 19 million barrels of oil.

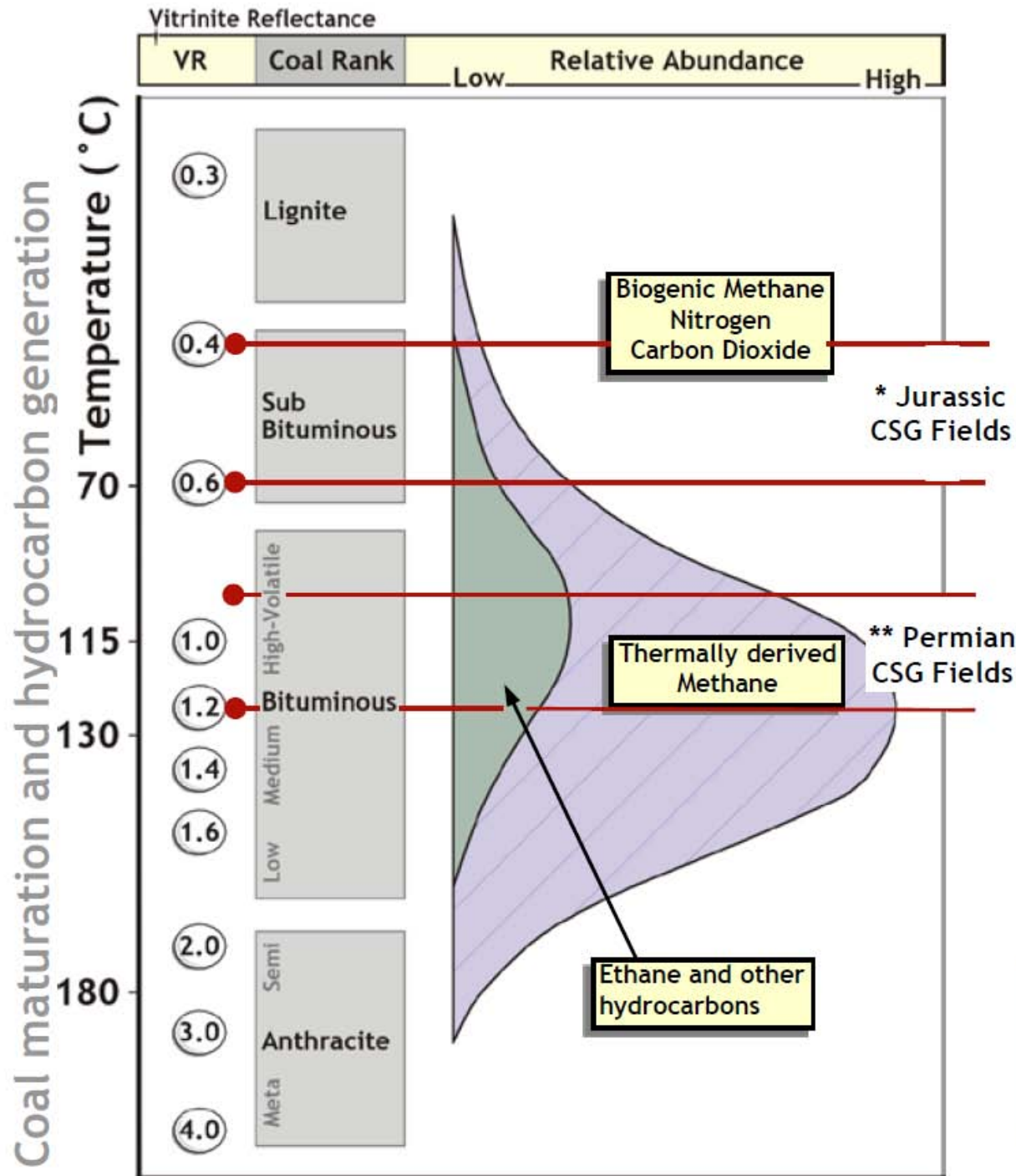
Surat Basin ATP's 893P & 901P





RAWSON RESOURCES LIMITED

- Surat Basin Walloon Coal Measures play is already extending to the deeper parts of the Undulla Nose, toward the Taroom Trough.
- CSG exploration projects now at depths of 1,000-1,500m in some other areas.



QLD CSG Plays

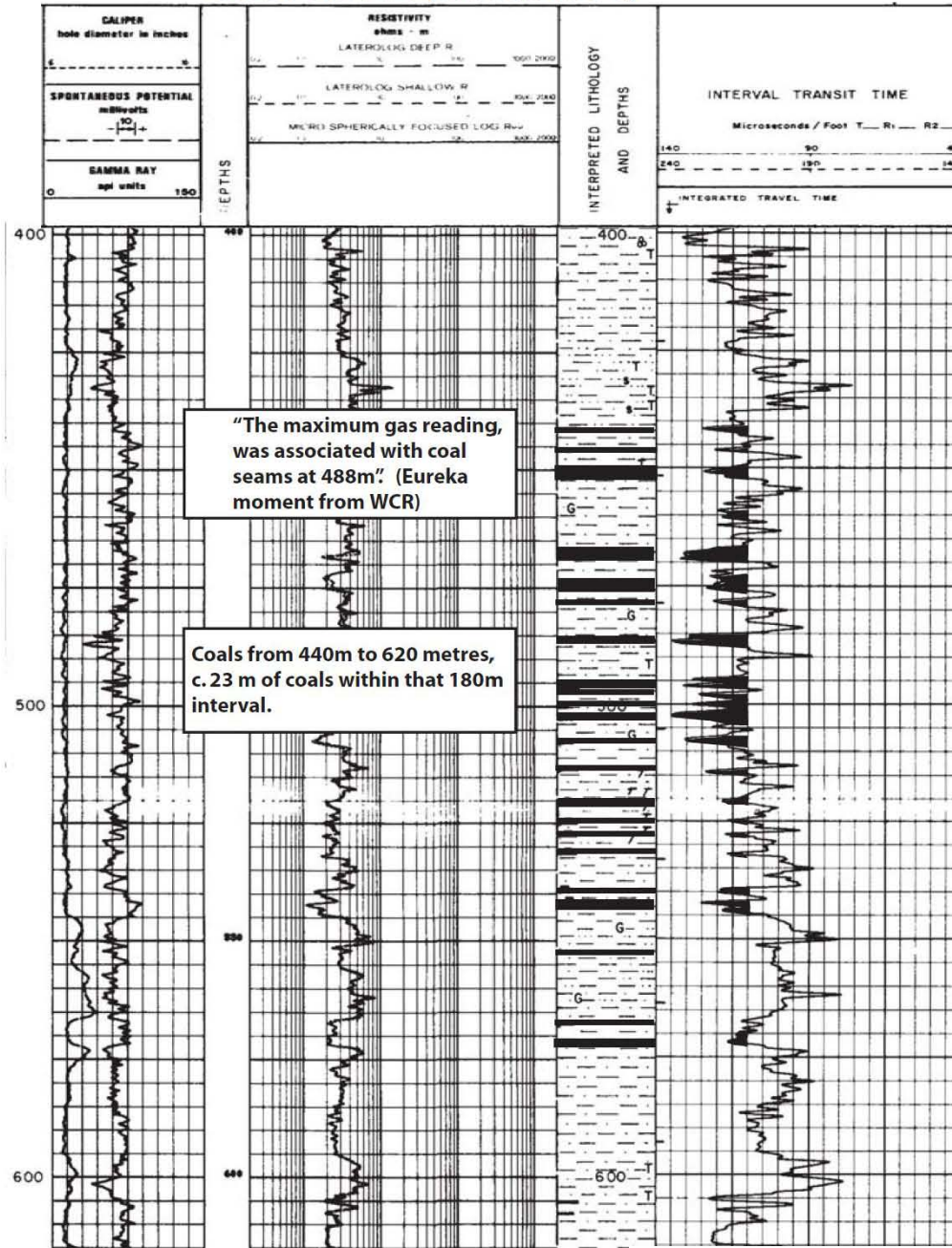
- Walloon Coal Measures
- Taroom Cretaceous coals?

Isotope Data

- * Confirmed as largely microbial in origin
- ** Confirmed as largely thermogenic in origin

From Origin Energy Presentation:
 'Comparative geological setting of conventional oil and gas fields and CSG resources in the Surat/Bowen Basin, QLD'
 - 30 June 2009

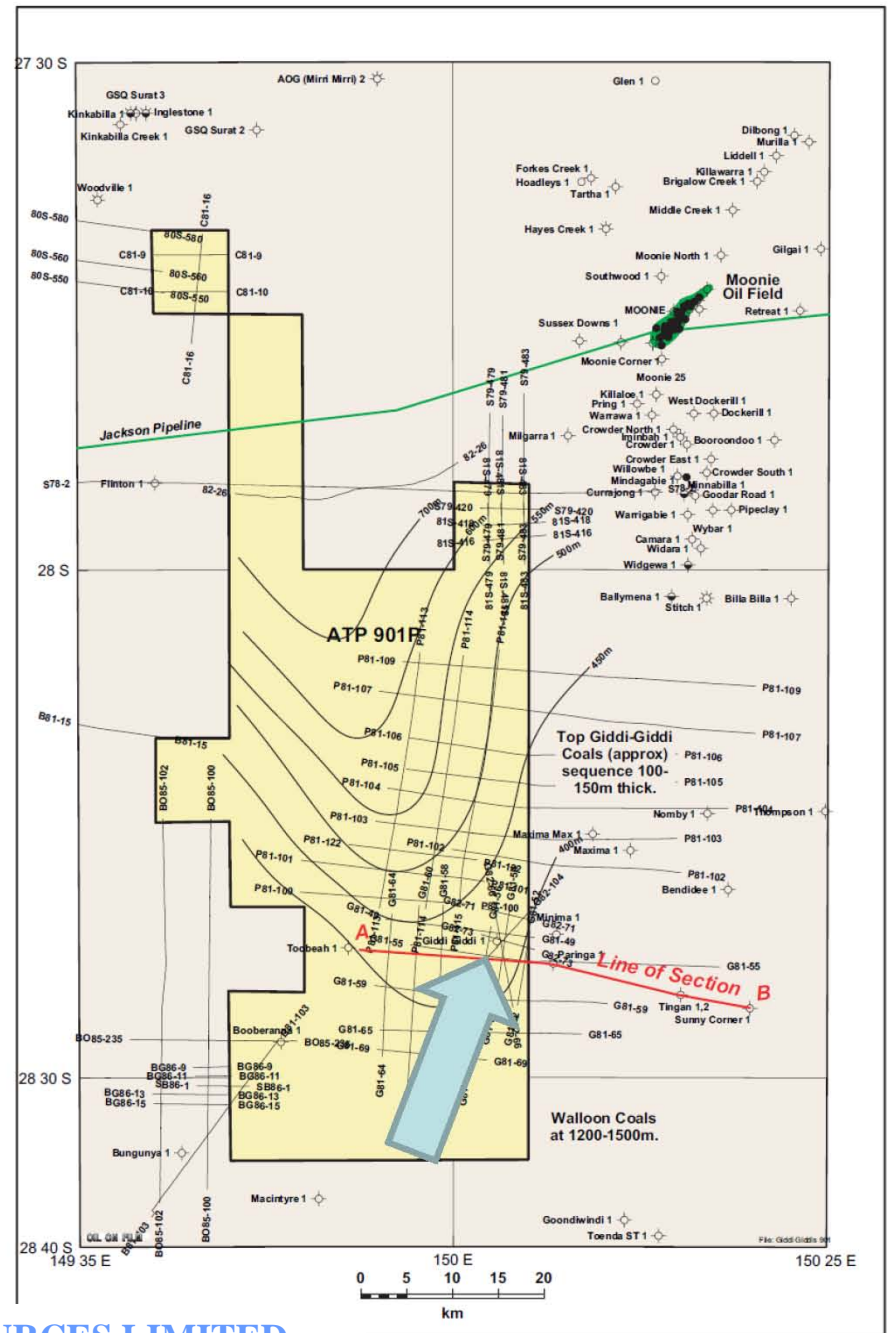
GIDDI GIDDI 1 (BEACH 1984)



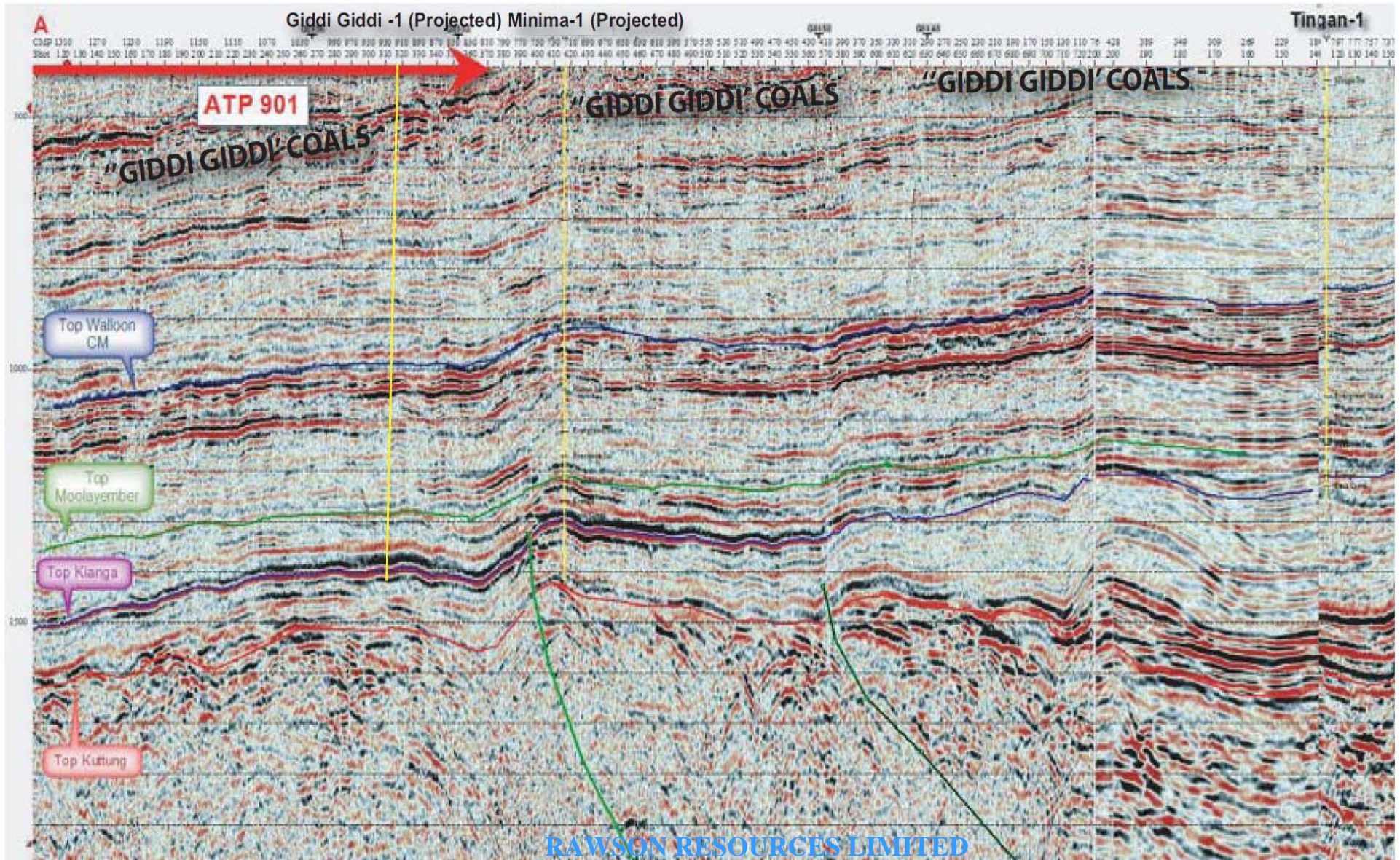
"The maximum gas reading, was associated with coal seams at 488m" (Eureka moment from WCR)

Coals from 440m to 620 metres, c. 23 m of coals within that 180m interval.

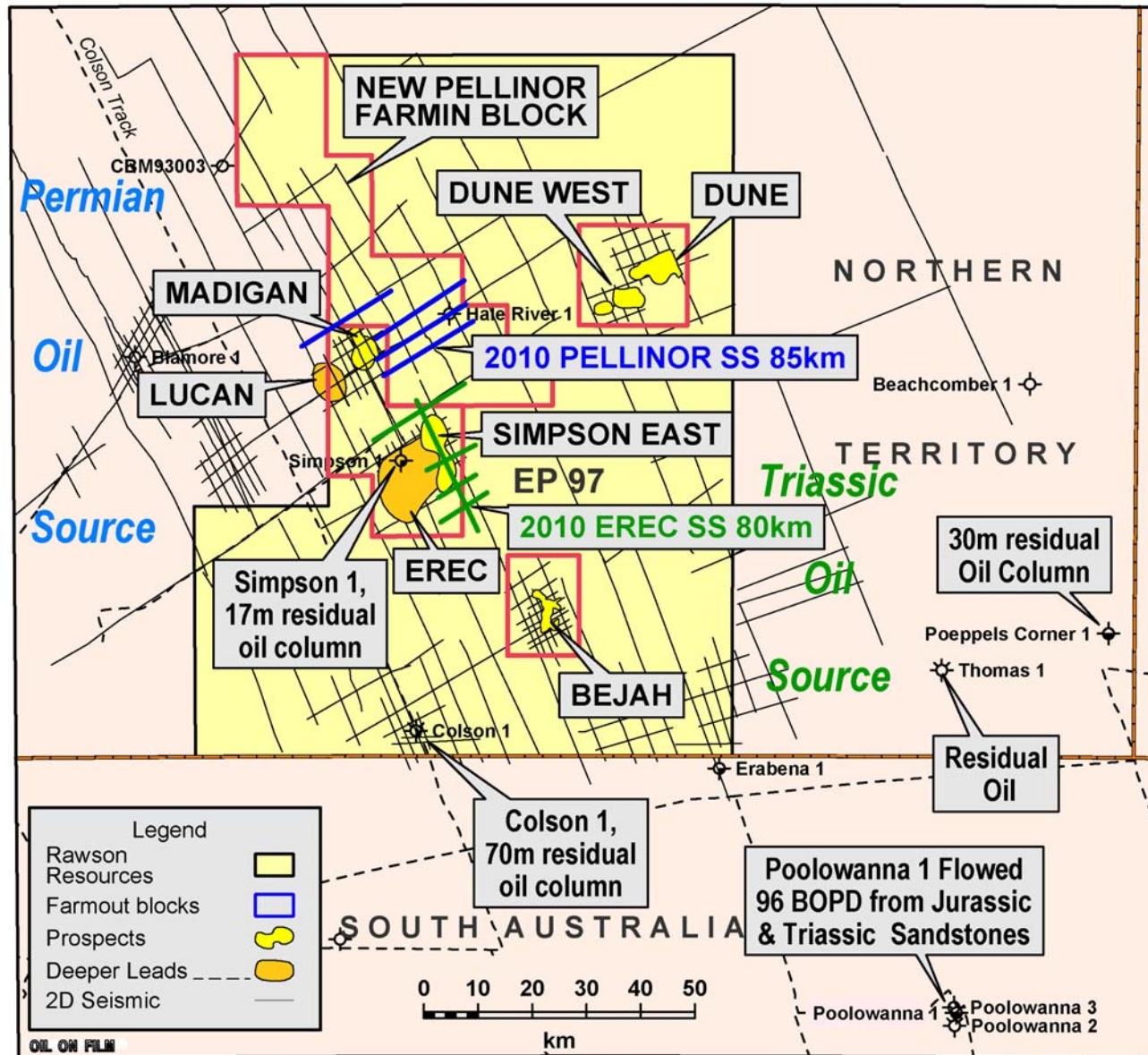
DEPTHS IN METRES



Giddi Giddi coals in eastern ATP 901

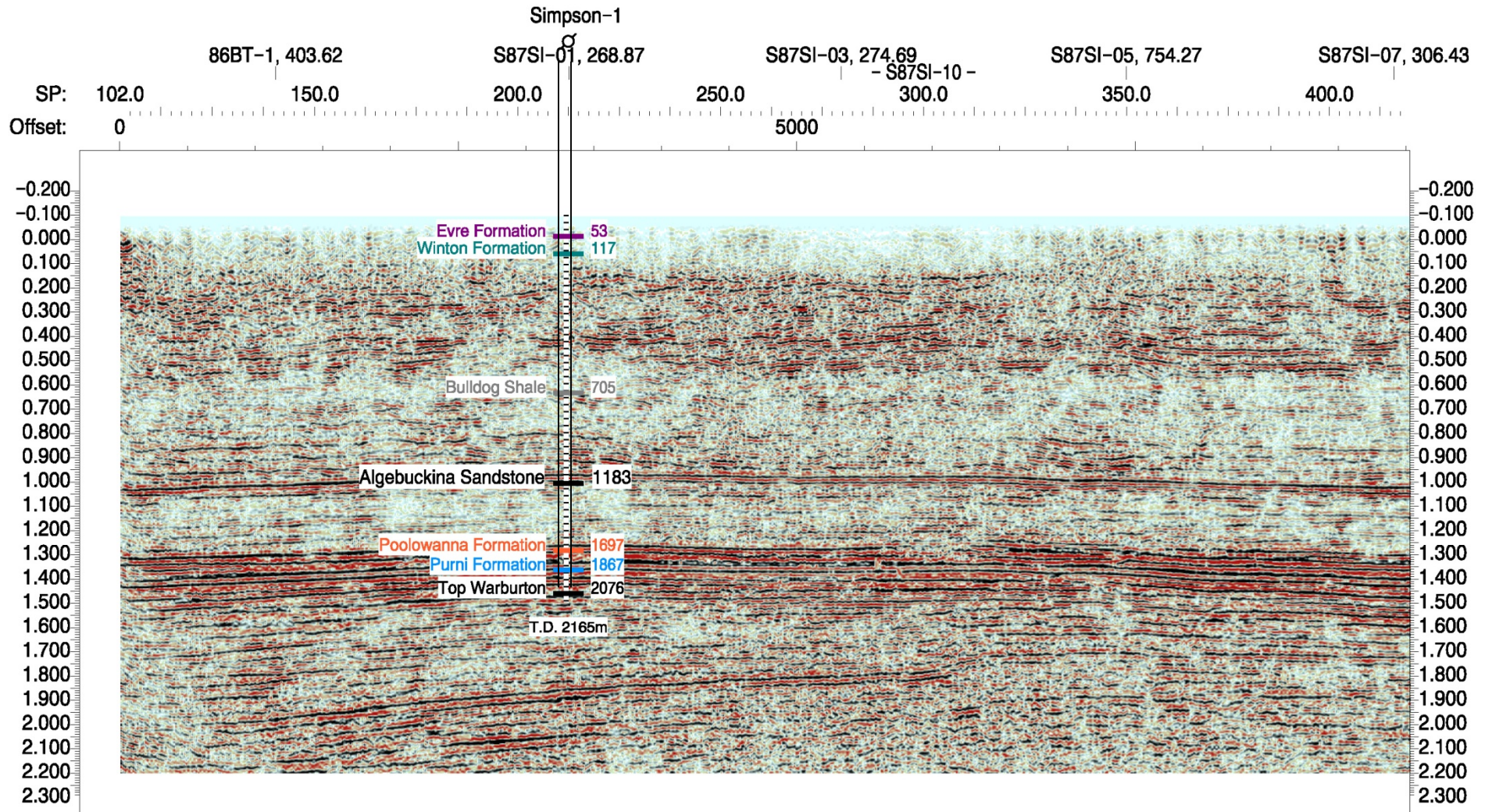


Oil Exploration in EP 97 Pedirka Basin



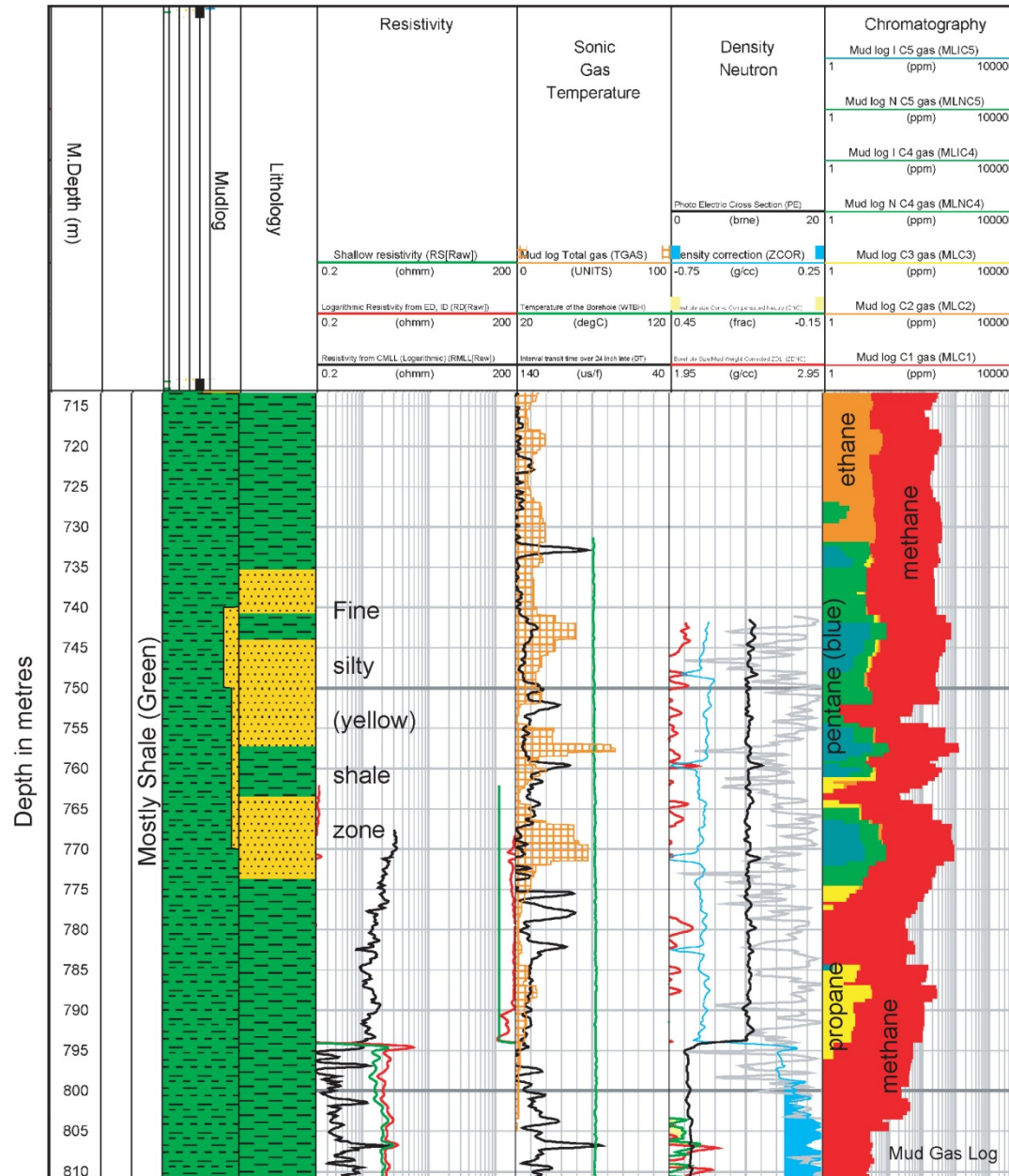
- Simpson-1, although not a discovery well, has provided much needed data and indications of shale gas potential.
- Central has acquired 165km of seismic this year, now being processed.
- Central to drill another well in farmout blocks.
- The Lucan and Erec prospects have been assessed by Central to potentially contain significant quantities of oil in place.

Simpson 1, drilled 2008



Seismic tie, line S87SI-10, for Simpson-1 and stratigraphy

Shale Gas Potential

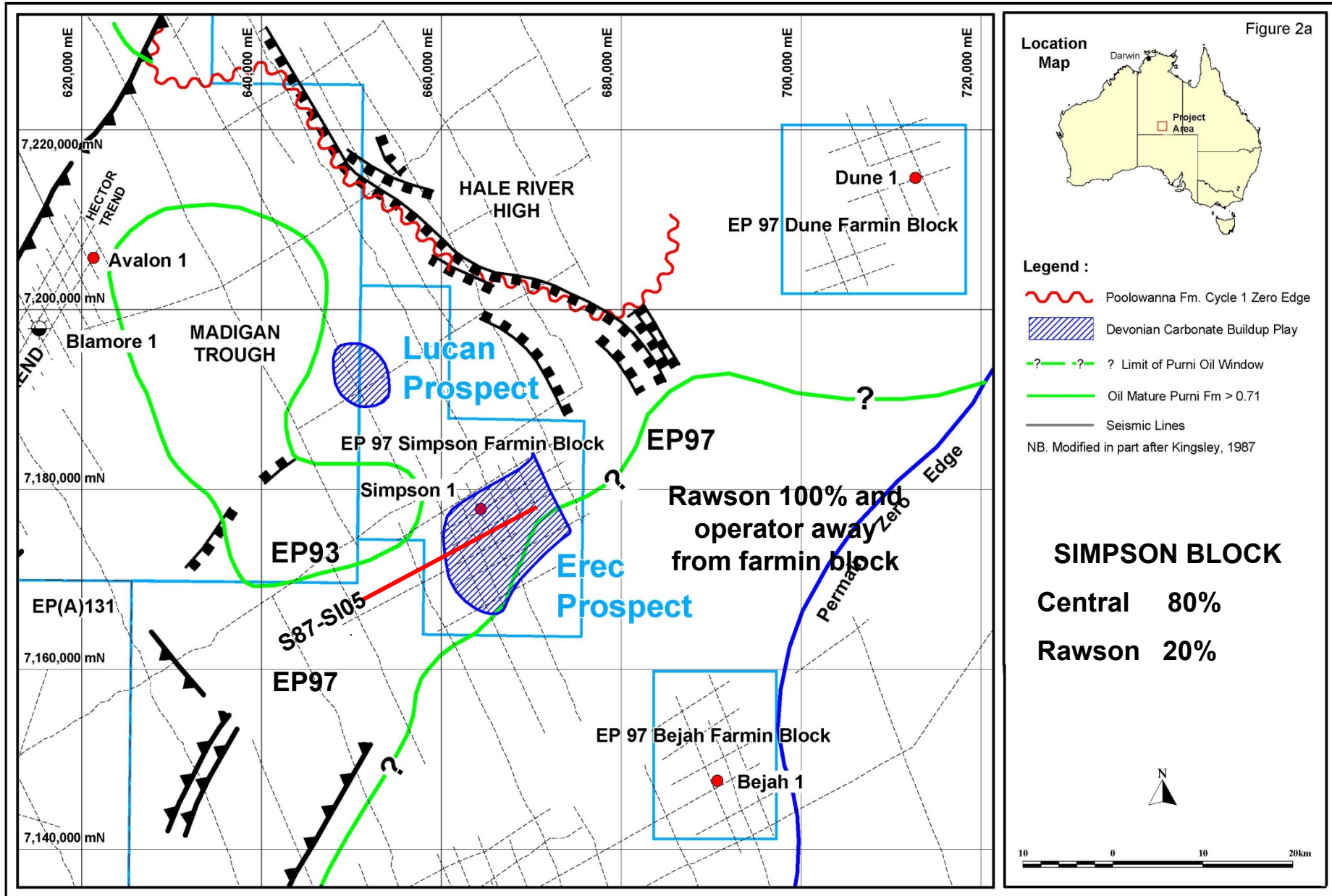


- Shallow shale gas potential may occur in Cretaceous age silty shales and fine grained sandstones in parts of EP 97.

- These gassy shales occur from 735m to 795m in the Simpson-1 well drilled in 2008.

- This may explain the higher than background levels of gas microseepage found over the Simpson Prospect from a soil gas survey run in 2006.

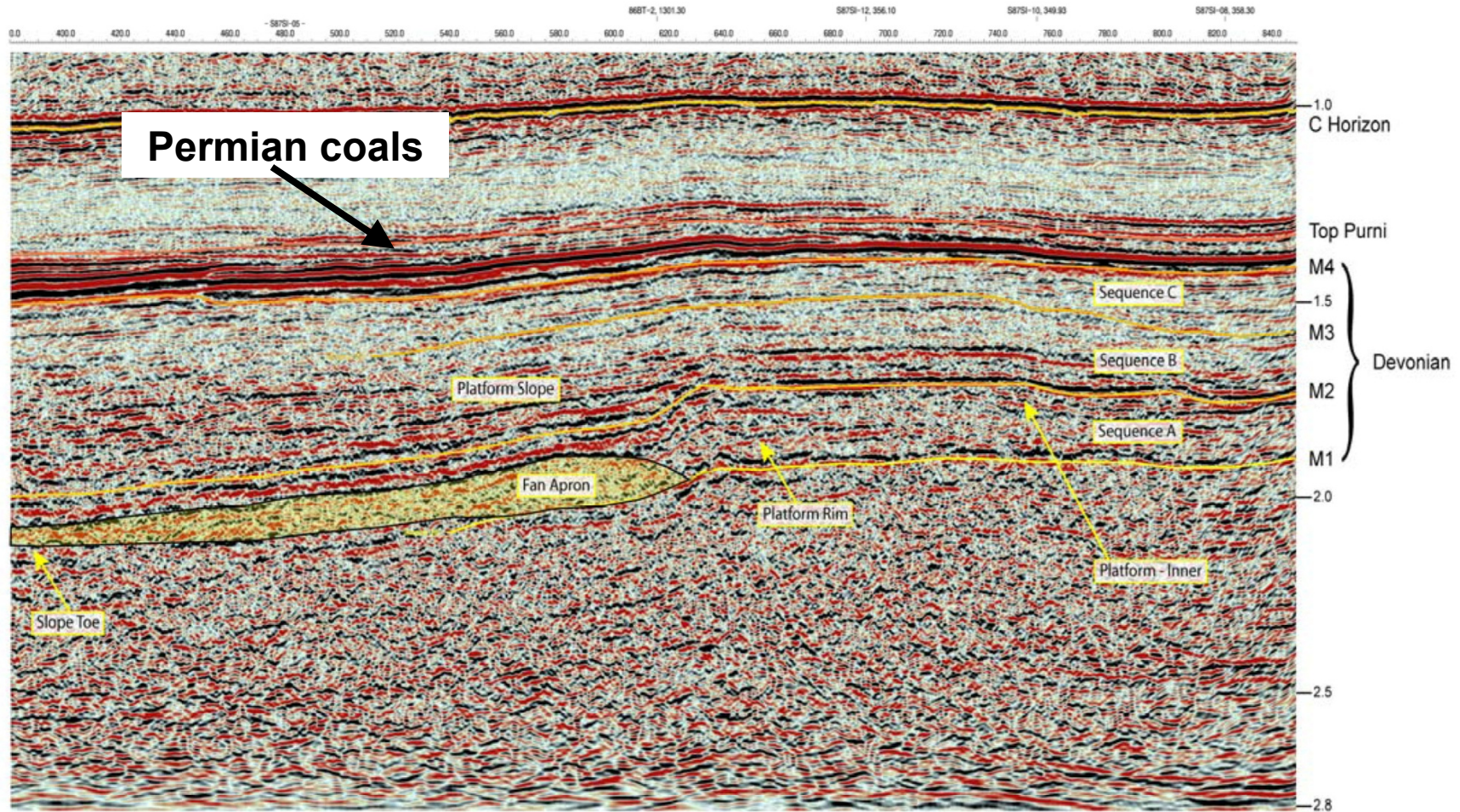
EREC AND LUCAN PROSPECTS (SIMPSON BLOCK)



RAWSON RESOURCES
LIMITED

Erec Prospect

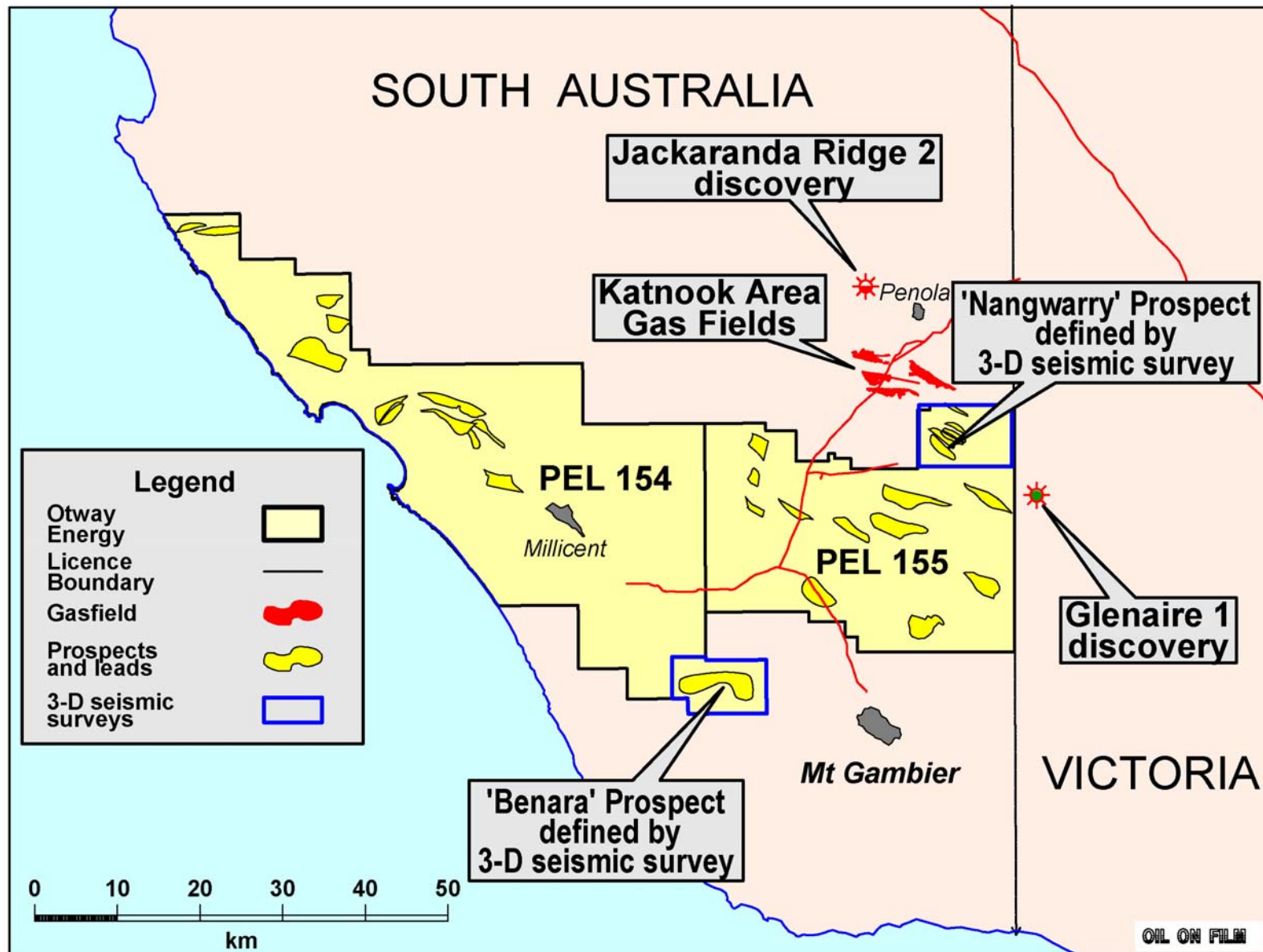
Seismic Line S87SI-05



Erec Prospect SW to NE section, the M4 Horizon is thought to represent the top of Devonian Sequence C transgressive sands and shales tagged in the Colson 1 well

**RAWSON RESOURCES
LIMITED**

Otway Basin PEL 154 & PEL 155, S.A.



- Kea Petroleum to Drill Nangwarry-1 in 2011, to earn 50% of PEL 155

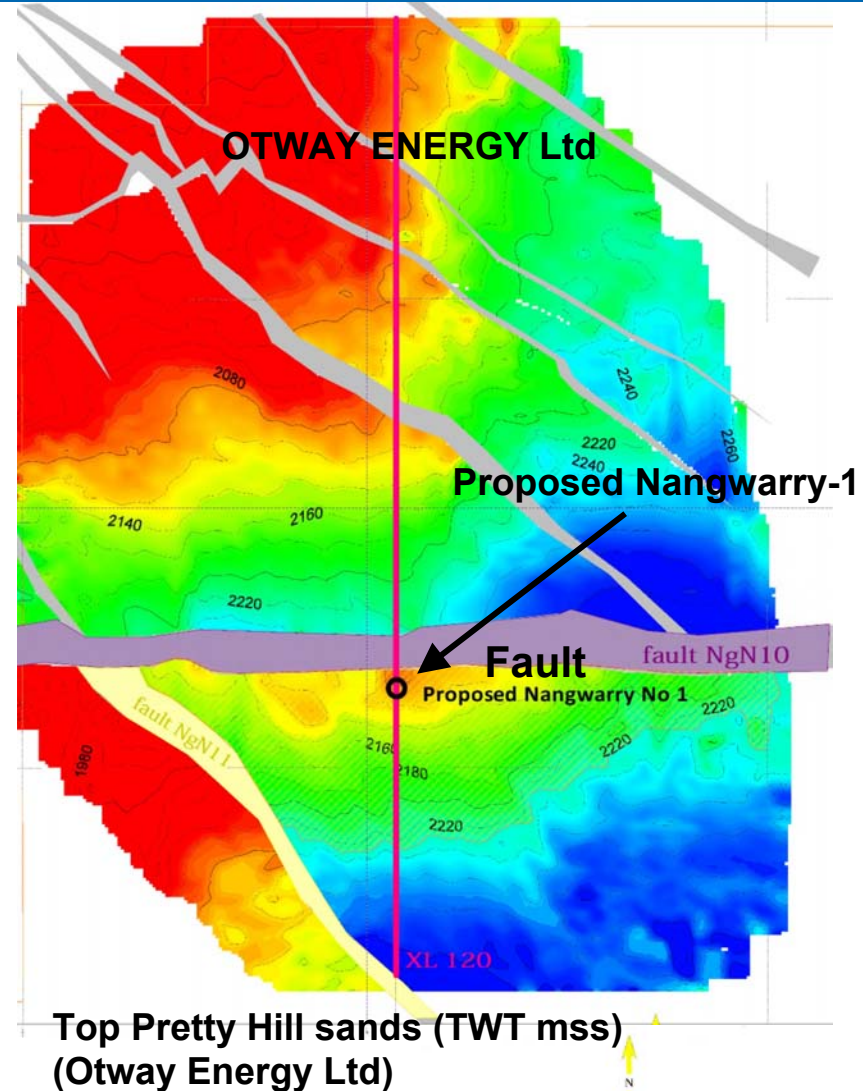
RAWSON RESOURCES LIMITED

PEL 155 Nangwarry Prospect

Commentary

- The Nangwarry Prospect has a best estimated unrisked potential resource of 32.9 PJ and 0.25 million barrels of condensate
 - The Katnook Area commercial gas-condensate fields are located between 9 and 22 km to the north of the Nangwarry Prospect.
- Katnook gas-condensate fields:
 - 68 PJ over two decades.
 - The Nangwarry Prospect has a similar structure – reservoirs form traps against fault planes.
 - Drilling Nangwarry by Kea Petroleum in 2011.

Time Structure Map



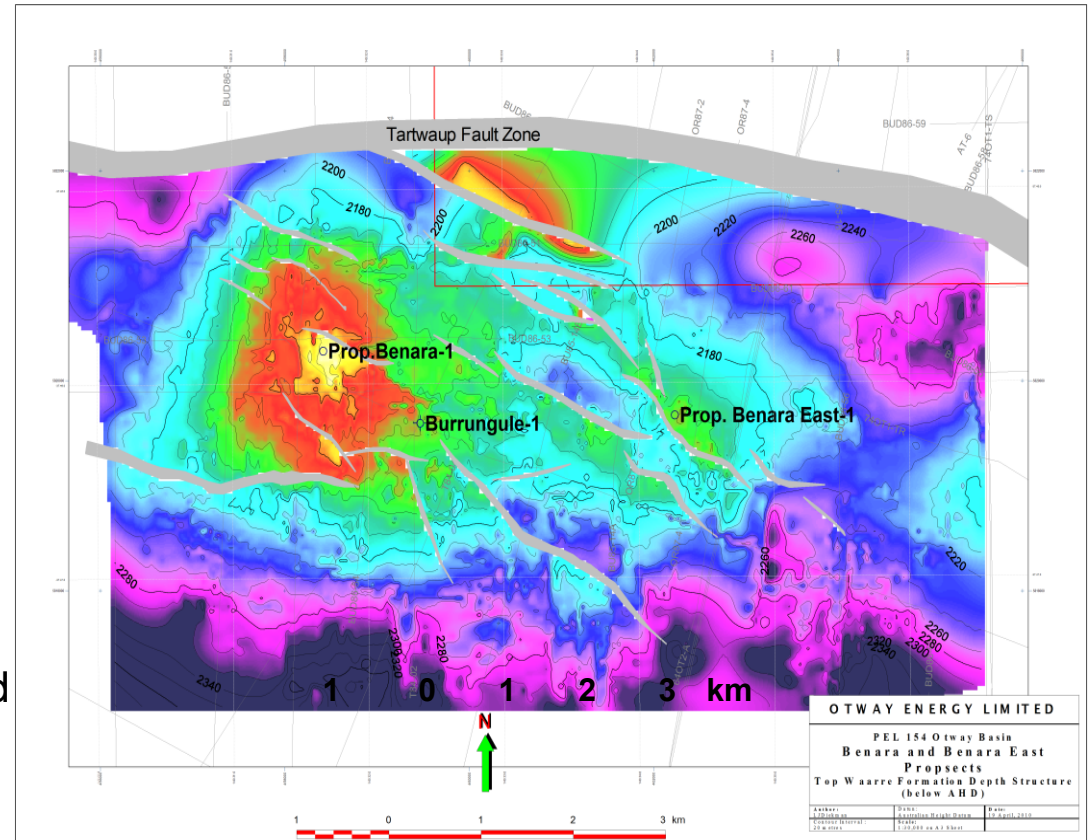
Top Pretty Hill sands (TWT mss)
(Otway Energy Ltd)

PEL 154: Benara Prospect

Commentary

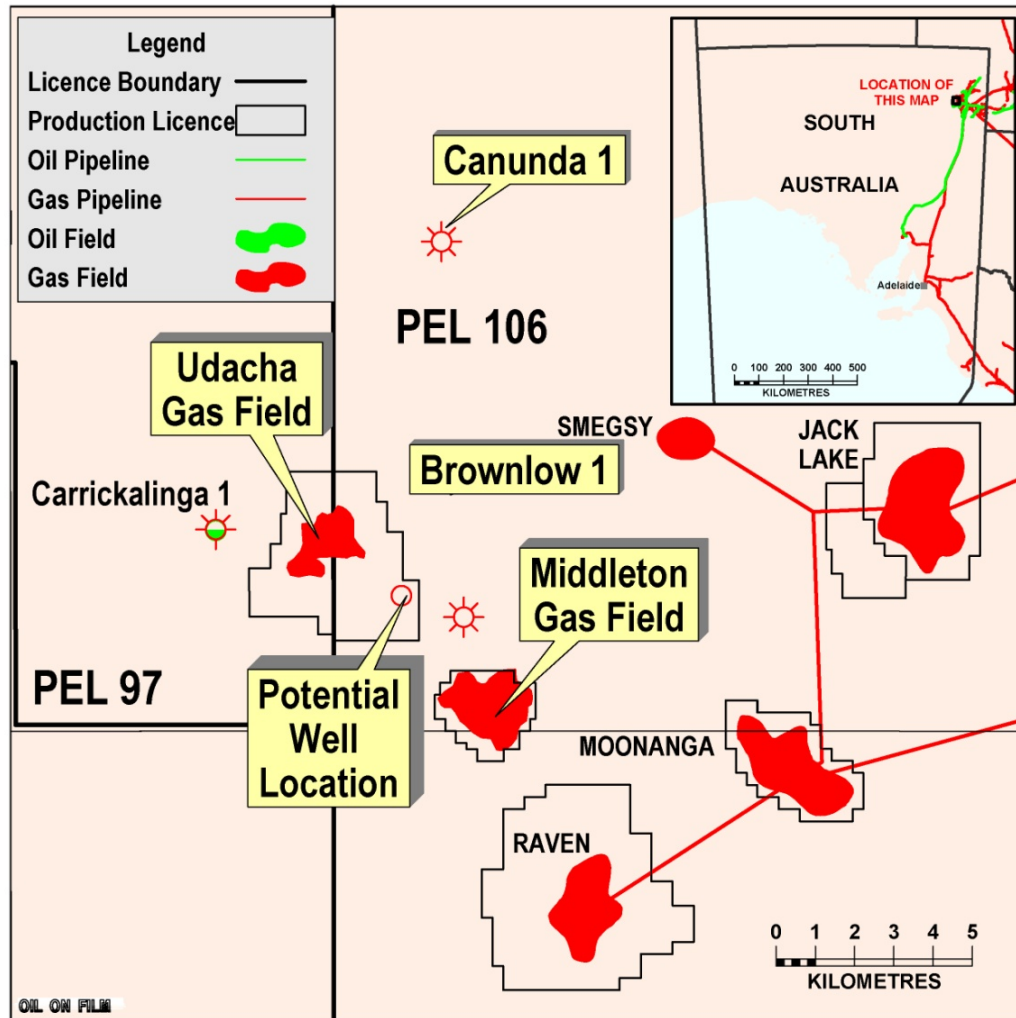
- Benara Prospect has a best estimated unrisked potential resource of **53.7 PJ** and **0.34 million** barrels of condensate
- Burrungule-1 exploration well (drilled in 1975)
 - Intersected the Waarre Formation with very good quality reservoir characteristics
 - Off structure, 2km from the crest and 75m down dip
 - Located using sparsely spaced 2D seismic lines (in 1974)
- Burrungule 3D seismic survey (2008 and 2009) mapped out the complex geology and showed the accurate position of the structure.
- Drilling program on farmout .

Depth structure map

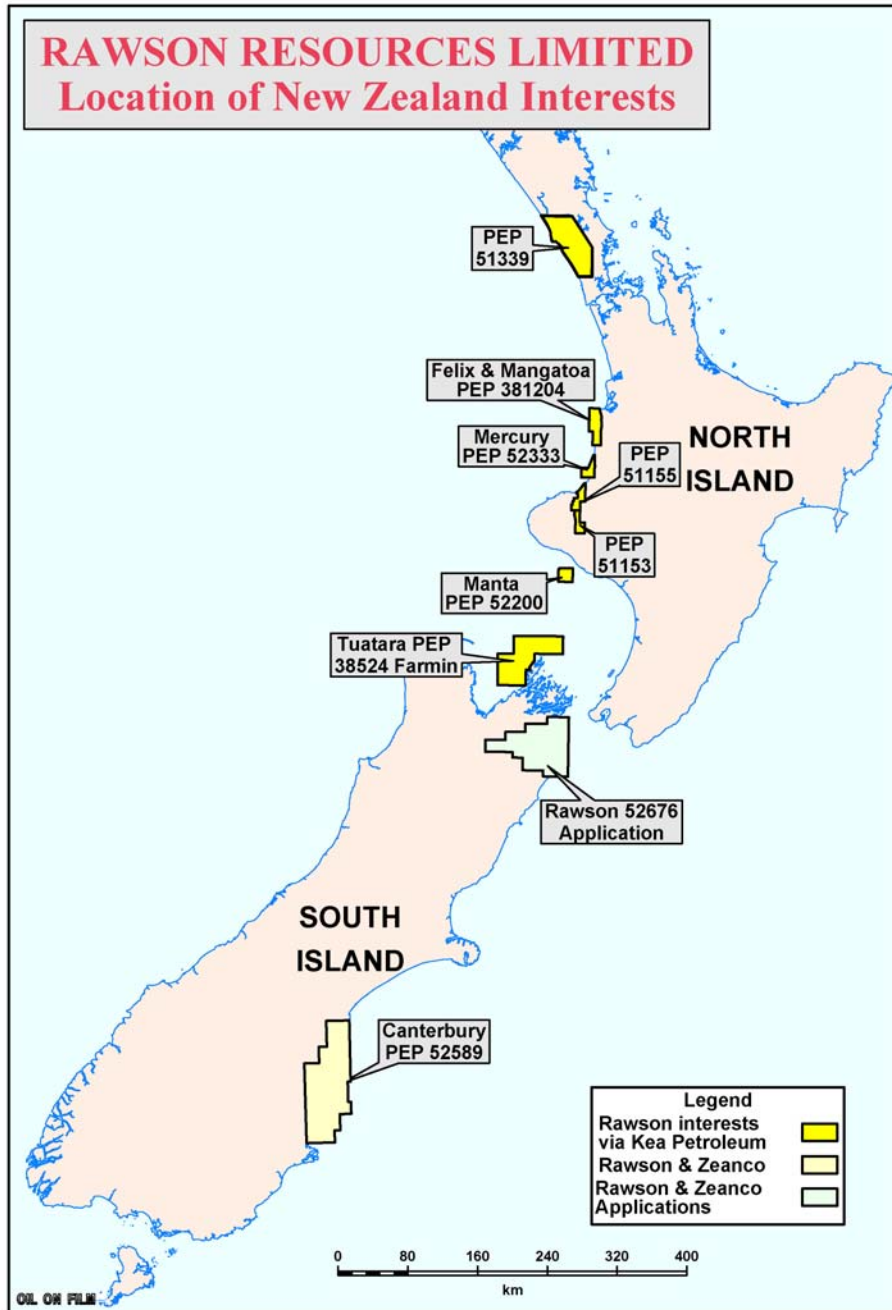


The depth structure map shows the location of the proposed Benara-1 exploration well, the Benara East Prospect and the location of the off-structure Burrungule-1 exploration well

Cooper Basin Udacha-1 Wet Gas Project



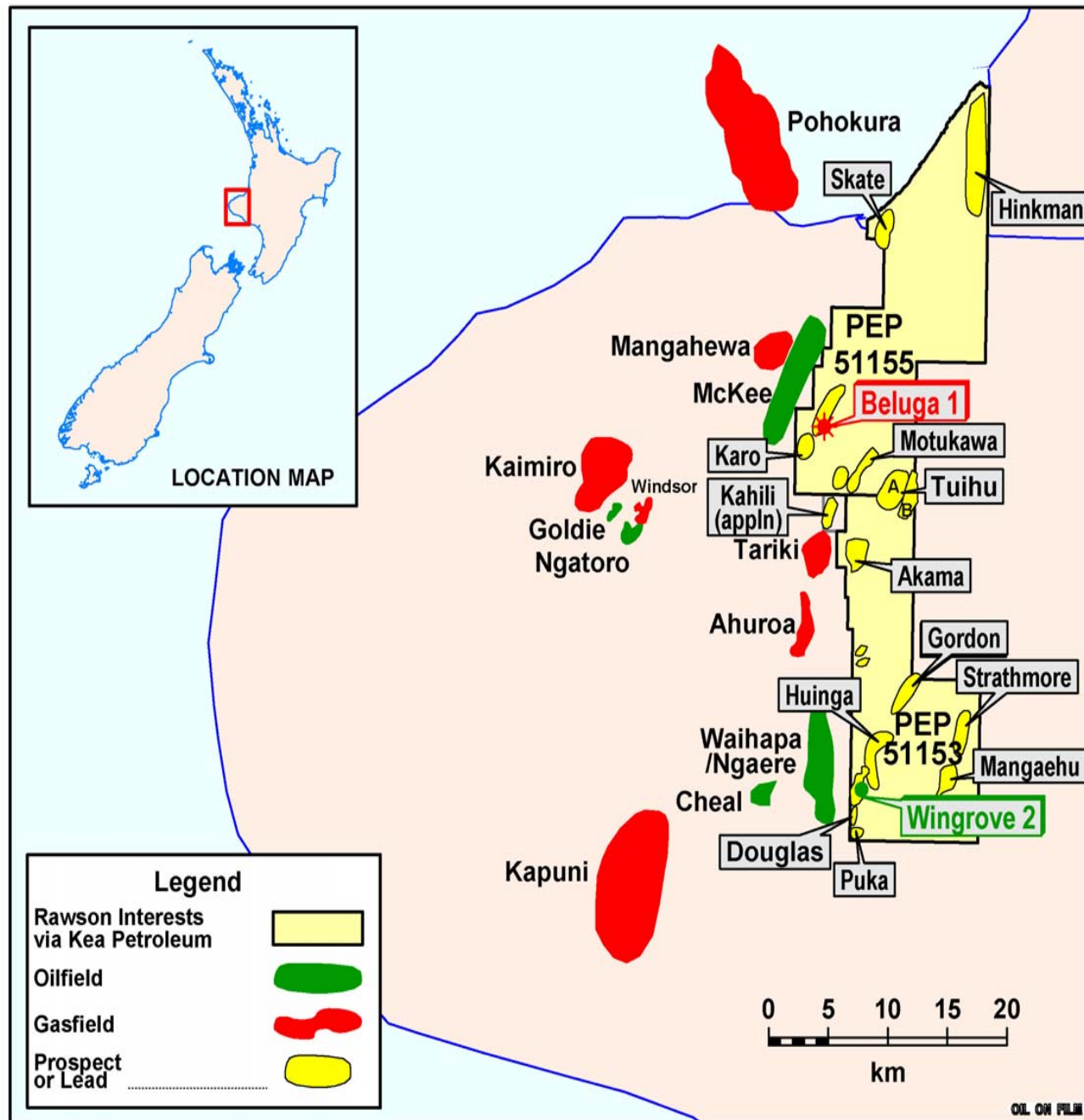
- Beach Brownlow-1 & Canunda-1 discoveries add to the Wet Gas project.
- Independent reserves review upgrades the area.
- Rawson 10% of Udacha.
- Planning for the development of these Wet Gas discoveries is underway.



RAWSON RESOURCES LIMITED

New Zealand

- Rawson Taranaki was a founding shareholder and now has a 5.4% holding in Kea Petroleum Plc, which has interests in 7 NZ permits and operates 6 on the North Island.
- Kea has drilled 3 wells, Wingrove-2 in PEL51153 and Beluga-1 in PEL51155, and farmed into Tuatara-1 in PEP38524 this year.
- Rawson made two applications in the South Island with Zeanco P/L. PEP 52589 has recently been awarded, PEP 52576 is progressing.
- The importance of the Company's shareholding in Kea should not be understated, as Kea could develop into a major New Zealand oil and gas company .

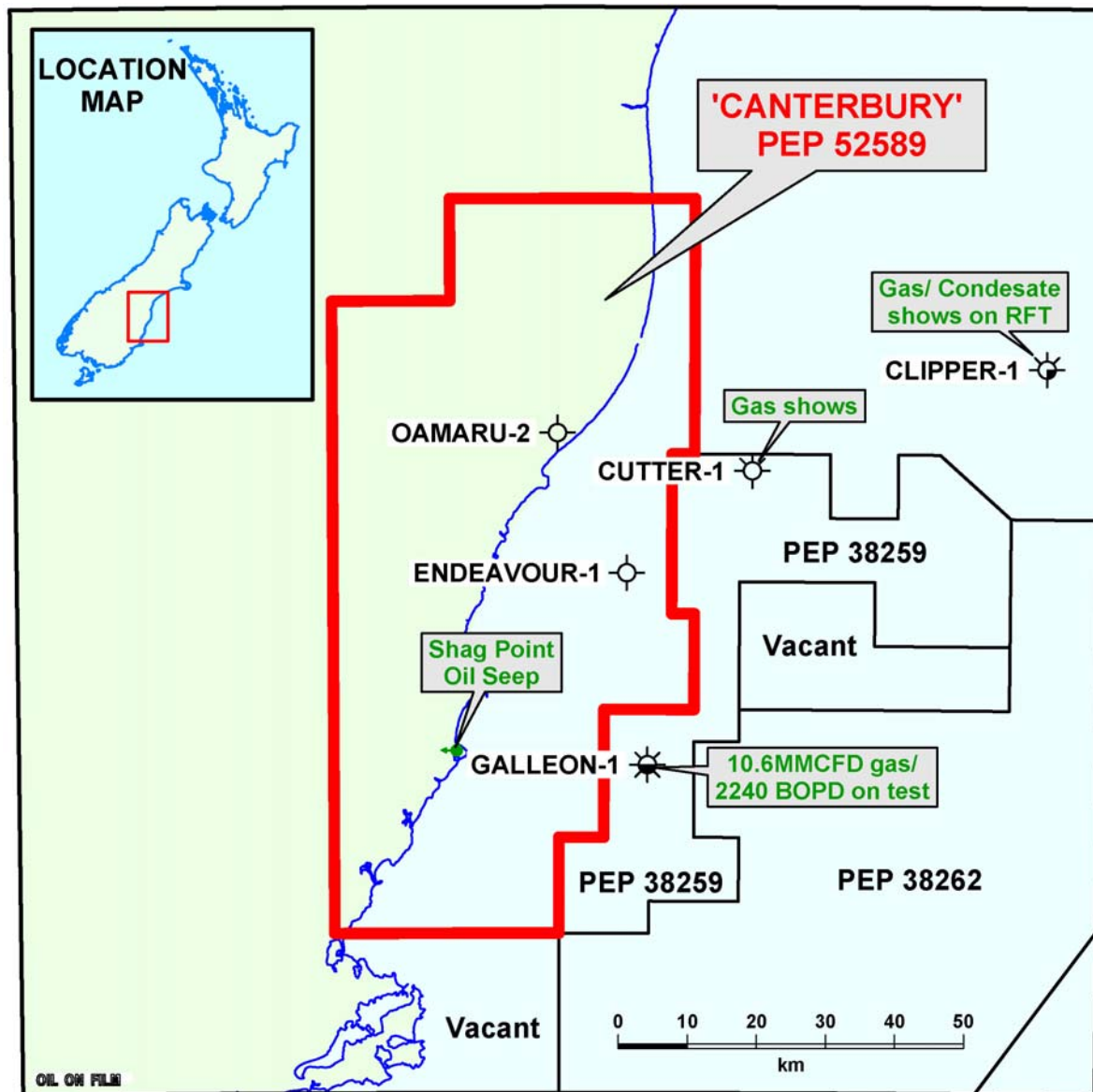


Taranaki Basin

- Wingrove-2 was drilled in PEP51153, intersected 16m of oil pay, cased and suspended pending production testing.
- Beluga-1 was drilled in PEP51155 and intersected gas charged sands, suspended pending further investigation.
- The Beluga-1 well was fully financed by Methanex.
- An aggressive drilling and exploration program continues.

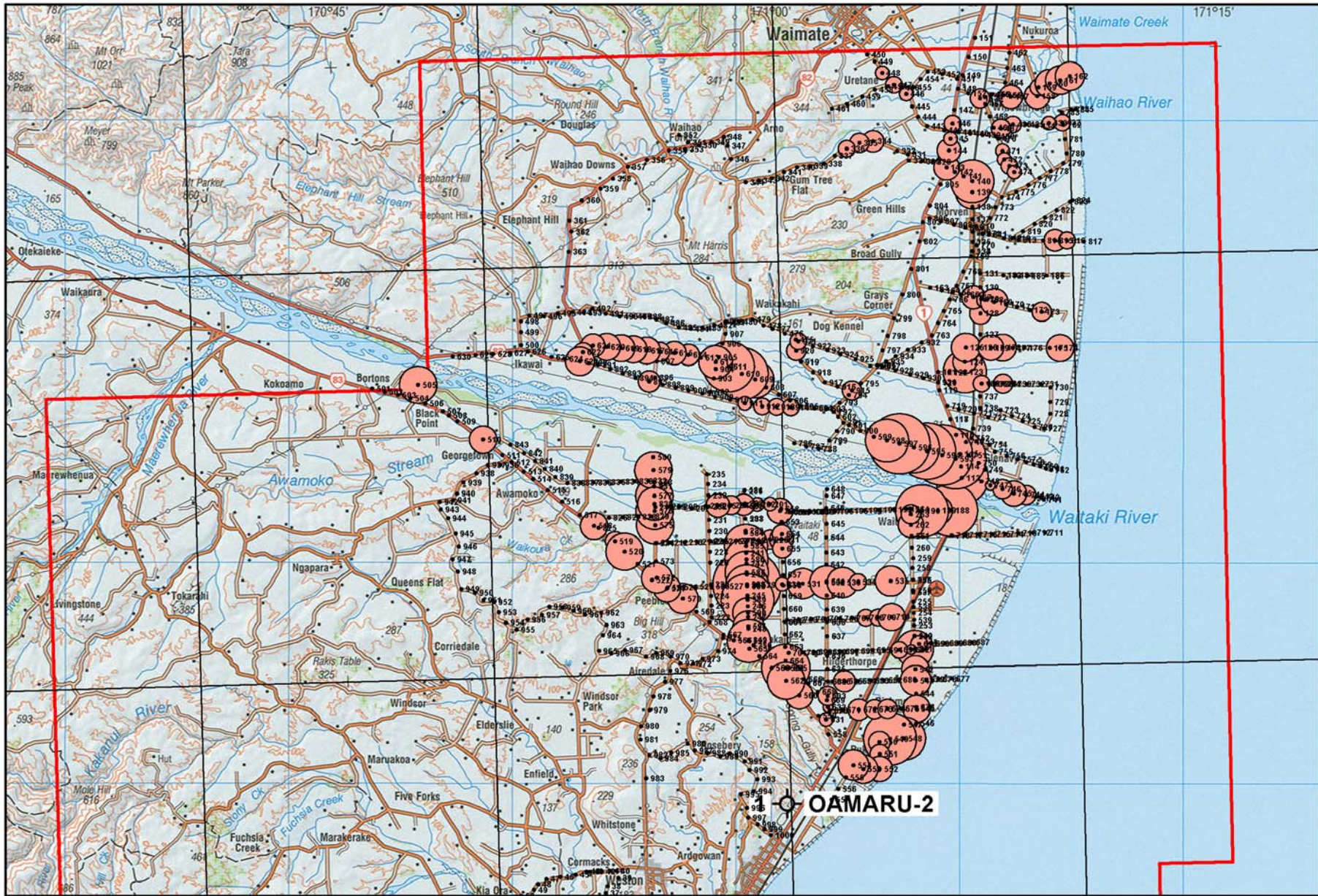
Canterbury Basin

PEP 52589 Rawson 50% and Zeanco 50%



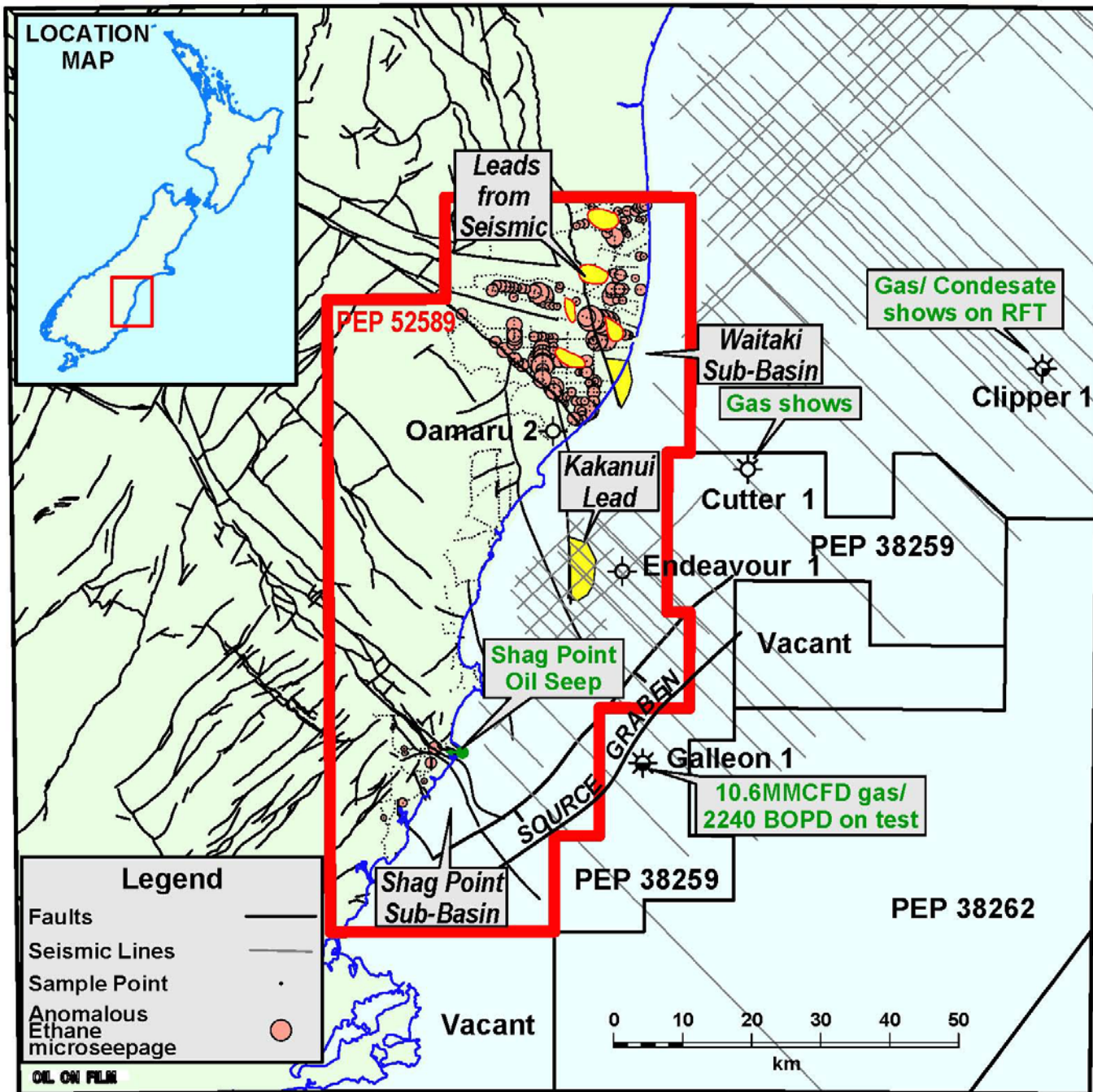
RAWSON RESOURCES LIMITED

- Permit covers 4716 sq km of the Canterbury Basin
- Awarded November 2010 for a period of 5 years .
- BP Shell Todd had made a subcommercial discovery in 1985 at Galleon-1.
- Endeavour-1 also proved thickly developed and rich source rocks within a Late Cretaceous coal sequence which could provide charge for shallower prospects within the onshore.
- The Rawson operated joint venture carried out a soilgas geochemistry and geological survey during February 2011 to define regional onshore leads.



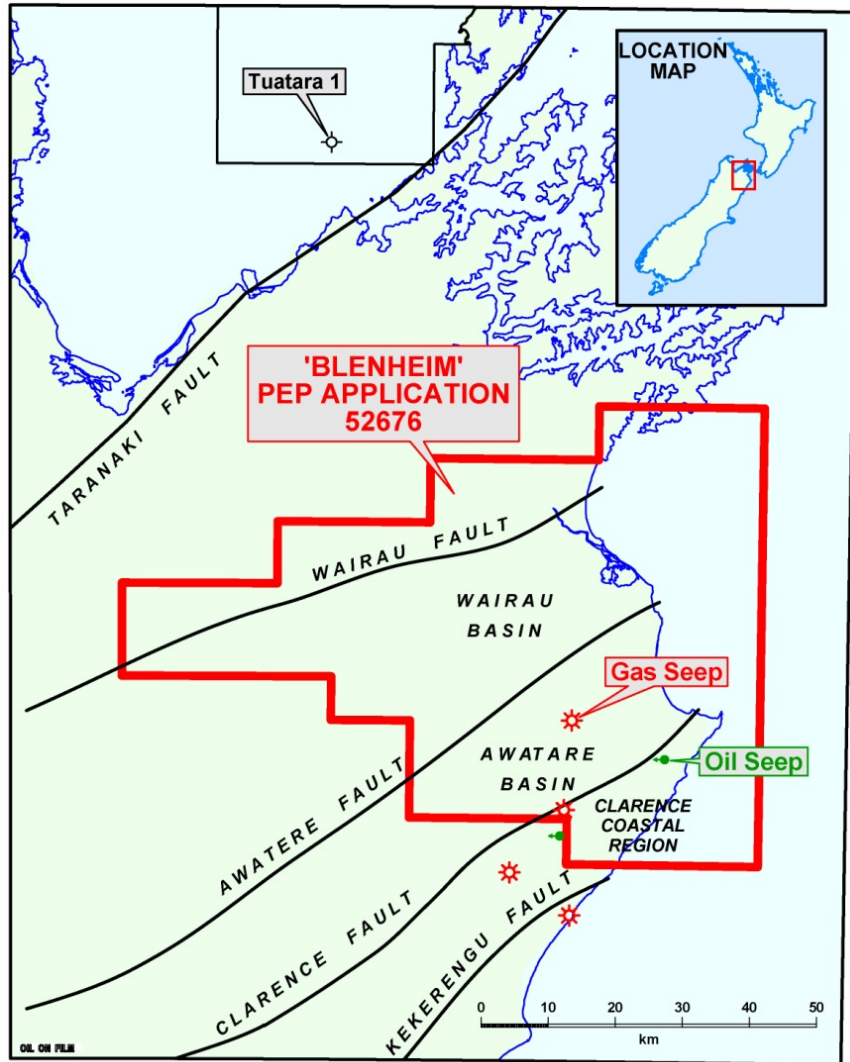
Results showing anomalous Ethane micro-seepages in northern PEP52589

RAWSON RESOURCES LIMITED



RAWSON RESOURCES LIMITED

South Island Application by Rawson and Zeanco



- The Marlborough Basin application covers 4032 sq.km Over the Wairau and Awatere Basins.

- Several active oil and gas seeps occur in the eastern onshore Marlborough Basin.

- Only one structural lead has been found so far; new leads will come from a reworking of the onshore geology, locating anomalous hydrocarbon seepage and new seismic acquisition.

- Application progressing with the New Zealand Ministry of Economic Development.

- Rawson Taranaki 50% and Zeanco 50% as in the Canterbury Basin.

Company Strengths

- Operating as an active explorer for 12 years.
- Listed on the ASX in 2005.
- Innovative exploration philosophy.
- Access to proprietary soil gas geochemical exploration.
- Experienced technical team.
- Extensive technical database.

www.rawsonresources.com

RAWSON RESOURCES
LIMITED

