



**RIFT VALLEY
RESOURCES LIMITED**

ABN 88 147 483 341



AGM PRESENTATION

November 2011

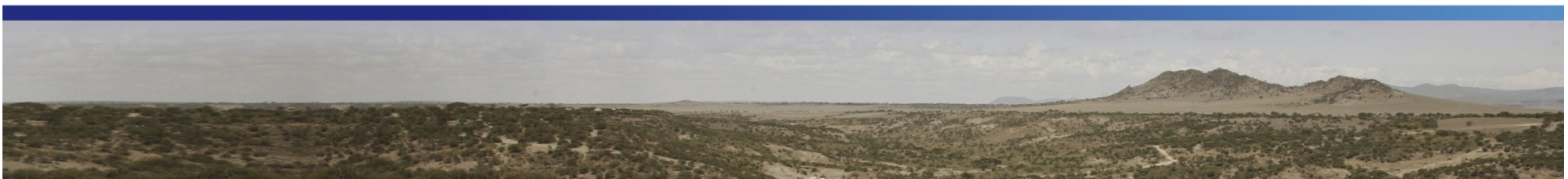
DISCLAIMER

This presentation may contain certain forward looking statements and projections regarding: estimated, resources and reserves; planned production and operating costs profiles; planned capital requirements; and planned strategies and corporate objectives.

Such forward looking statements/projections are estimates for discussion purposes only and should not be relied upon. They are not guarantees of future performance and involve known and unknown risks, uncertainties and other factors many of which are beyond the control of Rift Valley Resources Limited. The forward looking statements/projections are inherently uncertain and may therefore differ materially from results ultimately achieved. Rift Valley Resources Limited does not make any representations and provides no warranties concerning the accuracy of the projections, and disclaims any obligation to update or revise any forward looking statements/projects based on new information, future events or otherwise except to the extent required by applicable laws.

COMPETENT PERSON

Any information in this report that relates to Exploration Results or Mineral Resources is based on information compiled by Mr Michael McKeivitt, who is a Member of The Australasian Institute of Mining and Metallurgy who is a full-time employee of the company. Mr Michael McKeivitt has sufficient experience which is relevant to the style of mineralisation and type of deposits under consideration and to the activity which he is undertaking to qualify as a Competent Person as defined 'Australasian Code for Reporting of Exploration Results, Mineral Resources and Ore Reserves' (*JORC Code 2004 Edition*). Mr Michael McKeivitt consents to their inclusion in the report of the matters based on his information in the form and context in which it appears.



RIFT VALLEY RESOURCES LIMITED

- **SHARES ON ISSUE**

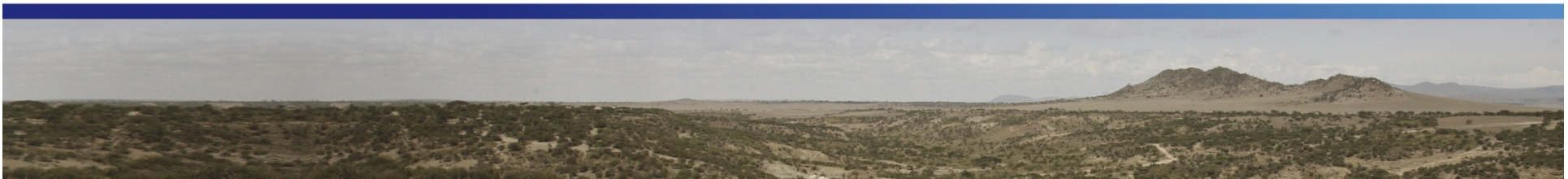
- 83,500,000

- **CASH AVAILABLE**

- \$10.5m

- **BOARD IS EXPERIENCED, EFFECTIVE, AND EFFICIENT**

- Chairman is Honorary Consul for Tanzania
 - Three well-credentialed geologists with extensive African experience
 - One mining engineer, raised in Tanzania and well-connected in Tanzanian business circles



RIFT VALLEY - HIGHLIGHTS

- **GROUND**

- Large parcel of prospective ground in Tanzania (~1400sqkm)
- Tanzania is well endowed with minerals
- The right address in Africa

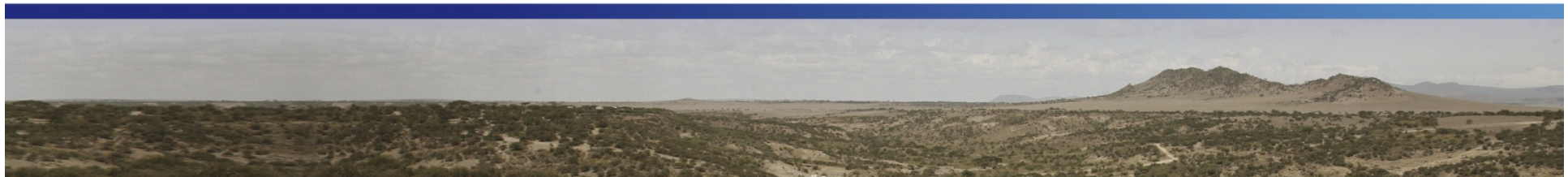
The right address in Africa

- **PEOPLE**

- Wealth of experience in successful mineral exploration and exploitation
- Team established in Tanzania
- Strong relationships in Tanzania

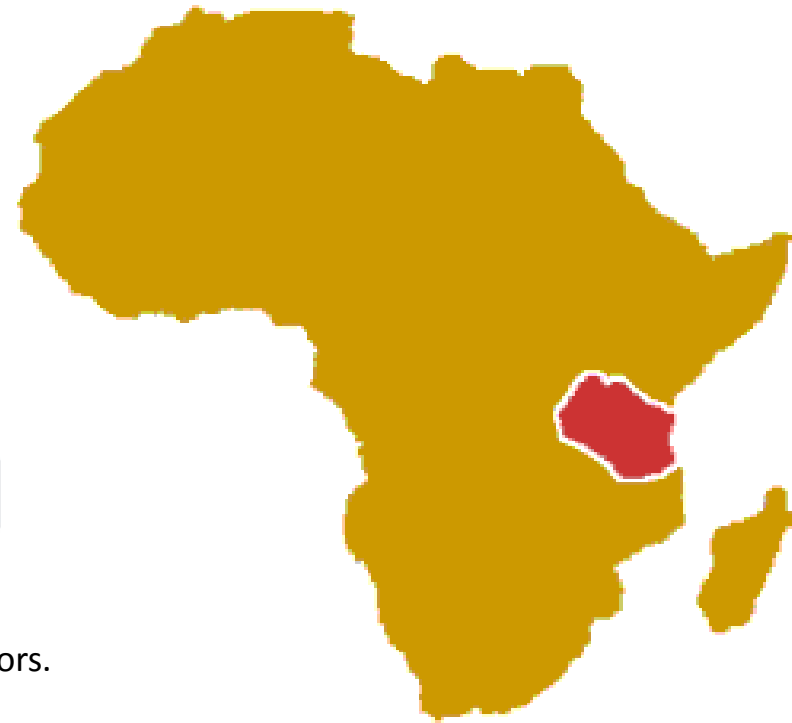
- **GROWTH**

- Three important projects already acquired
- Continuing to review a pipeline of emerging projects

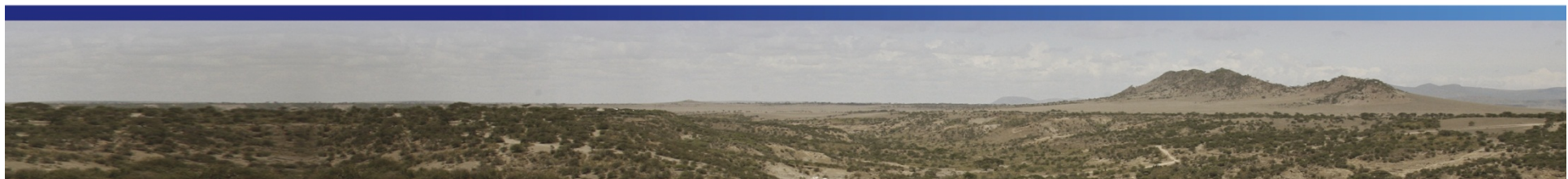


TANZANIA

- Politically stable multi-party democracy.
- Endorsed by World Bank and IMF.
- English & Swahili speaking - British Common Law.
- Mining Act modernized in 2010.
- Globally competitive tax and regulatory framework for investors.
- Endowed with significant mineral resources, yet relatively unexplored.
- Well established mining services industry.
- From no gold production in 1998 to 3rd largest in Africa today.
- Producers include Barrick, AngloGold Ashanti, and Resolute.



The right address in Africa

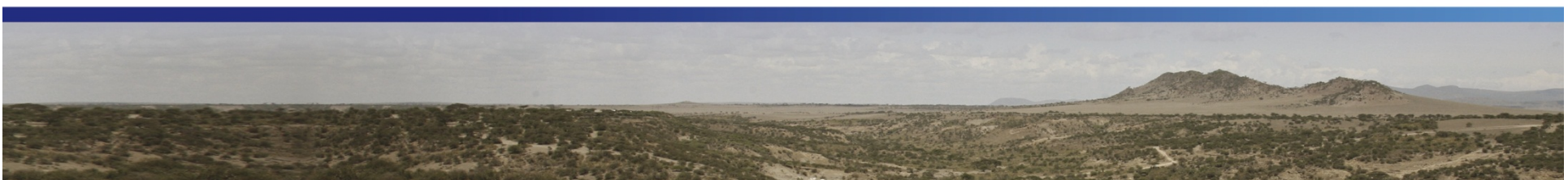


WORLD CLASS GOLD PROVINCE



LAKE VICTORIA GOLDFIELD

- More than **50Moz** discovered so far.
- Host to **+15Moz** deposits, such as Bulyanhulu and Geita.
- **Underexplored** and highly prospective.
- Strategic land holding of over 400 km² near multi million ounce deposits.



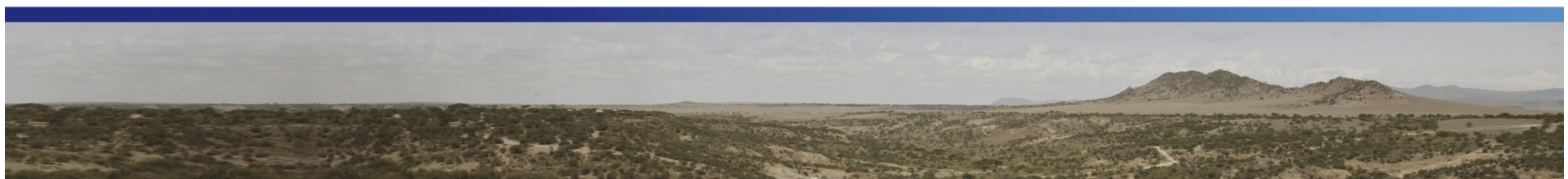
HISTORY OF KNOWN DEPOSITS

Operating Gold Mines		
Deposit	Size	Opened
Buzwagi	4Moz	2009
Tulawaka	0.8Moz	2005
North Mara	4.1 Moz	2002
Bulyanhulu	18.0 Moz	2001
Geita	16.0 Moz	2000
Golden Pride	2.7 Moz	1999

Non-Operating Mines		
Deposit	Size	Closed
Buhemba	2.0 Moz	2002
Buckreef	0.2 Moz	1960s
Kiagakari	0.15 Moz	1950s
Phoenix	?	1930s

Other Deposits	
Nyanzaga	6.2 Moz
Golden Ridge	2.2 Moz
Ridge 8	2.2 Moz

Few recent mines developed



DIRECTORS AND SENIOR MANAGEMENT



DIDIER MURCIA – B.Juris, LLB – Chairman

Honorary Consul for Tanzania in Australia. Director of Aminex PLC (LSE), Non-Executive Chairman of Centaurus Metals Limited (ASX) and Non-Executive Director of Gryphon Minerals Limited, (ASX). Previously a director of emerging iron ore producer Gindalbie Metals Limited (ASX)..



KEITH McKay - BSc (Hons) – Director

Geologist with 40 years technical and corporate experience in the mining industry. Extensive African experience, particularly in Botswana and Tanzania. Formerly Chairman of Gindalbie Metals Limited, Managing Director of Gallery Gold Limited, Australian Managing Director of Battle Mountain Gold Company and Director of Niugini Mining Limited. Currently a director of Centaurus Metals Limited.



MICHAEL McKEVITT – BSc (Hons) - Managing Director

30 years experience in mining and resources. Has worked and lead teams in Africa (Ghana, Burkina Faso, Zambia, and Tanzania), Indonesia, and the Philippines. Member of the Australasian Institute of Mining and Metallurgy and a competent person for reporting Exploration results and Mineral Resources accordance with the JORC Code (2004).



GOSBERT KAGARUKI – MSc – Director

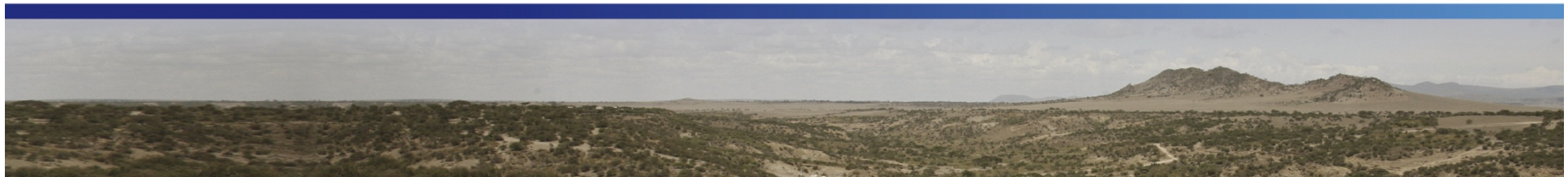
20 years experience in the resource industry as a geologist and GIS expert. Has worked for Dodoma Geological Survey in Tanzania, Rio Tinto (only Tanzanian professional staff member), Southern and Eastern African Mineral Centre (“SEAMIC”) and Barrick (Tanzania). Managing Director of Interactive Earth Imaging Limited, providing detailed geological advice, including BHP Billiton, Uranex Limited, Resolute Limited and Midland Minerals.



DARPAN PINDOLIA – B Eng (Hons), G Dip (Distinction), MIEAust - Director

Born and raised in East Africa, Mr Pindolia is fluent in Swahili and has significant business interests in Tanzania. Mr Pindolia has had considerable international experience in the engineering sector in Tanzania, United Kingdom and Australia.

The Team



COMPANY SECRETARY / CONSULTANTS



ROWAN CAREN – B Com, CA
Company Secretary

18 years commercial experience as a Chartered Accountant. Involved in the minerals exploration industry for over ten years and in 2004 created a specialist company secretarial and advisory consultancy, Dabinett Corporate Pty Ltd. Provides financial and corporate services to several listed and unlisted companies involved in the resources sector.



STEPHEN PARSONS - BSc(Hons) Geology
Consultant

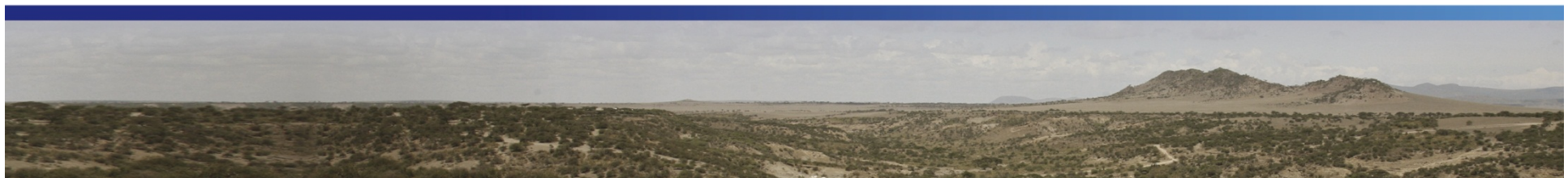
Managing Director and founder of ASX listed gold exploration company, Gryphon Minerals Limited, with a market capitalisation of over AU\$450m. Extensive experience in mineral exploration throughout Australia and Africa where he has worked for a variety of exploration and mining companies, from junior explorers to multinational mining houses, exploring for a variety of commodities including gold, base metals and PGE's.



HAMISH HALLIDAY - BSc (Geology)
Consultant

Extensive corporate and technical experience in all aspects of mineral exploration and development. Co-founder and Managing Director of Venture Minerals Ltd., listed on the ASX with a market capitalisation of over AU\$100 million. Previously Managing Director of Adamus Resources Limited, a company that he grew into a multi million ounce emerging gold producer.

The Team



TANZANIAN SENIOR MANAGEMENT

BARTHOLOMEW MKINGA - Exploration Manager

Recent role

- Exploration Manager , Resolute (Tanzania) Limited since 2006.

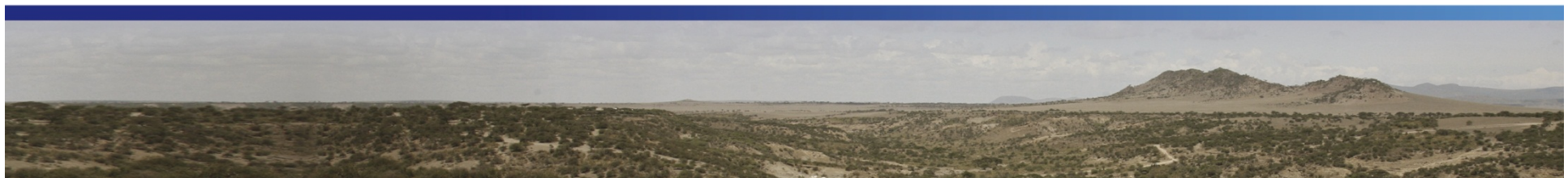
Significant achievements;

- 4.54 million ounce Nyanzaga (Tusker) gold deposit
- Developed the gold resource at Bulyanhulu, and
- Defined several other gold targets currently in development.

ENEA MINGA – Finance and Administration

- BCom, MBA, Certified Public Accountant
- Most recently worked with Anglo-American in the DRC as Finance and Administration Manager.
- Also Barrick Exploration Africa – responsible for Kabanga Nickel Company, Kagera Mining, Pangea Minerals as Senior Accountant and Administration officer.

The Team



TANZANIAN RESOURCES

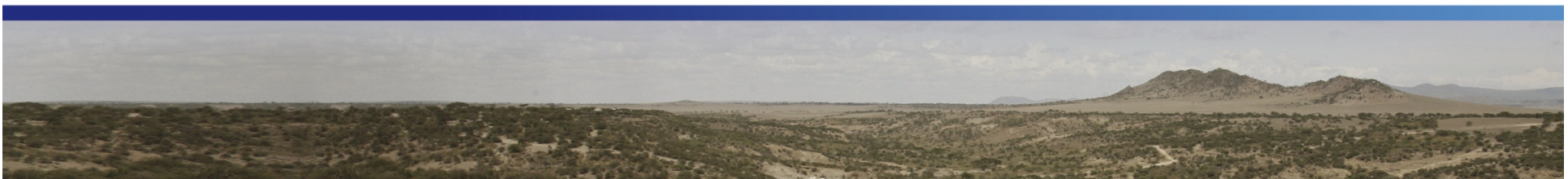
People

- Exploration Manager (1)
- Finance and Administration (2)
- Senior Geologists (2)
- Project Geologists (1)
- Senior Geotechnician (2)
- Field Technician (5)

Offices

- Dar es Salaam
- Mwanza

*Building teams and
Infrastructure*



RIFT VALLEY - RECENT ACHIEVEMENTS

- **ASX LISTING:**

Rift Valley successfully listed on the ASX on the 19th of May 2011.

- **NEW TENEMENT APPLICATIONS GRANTED**

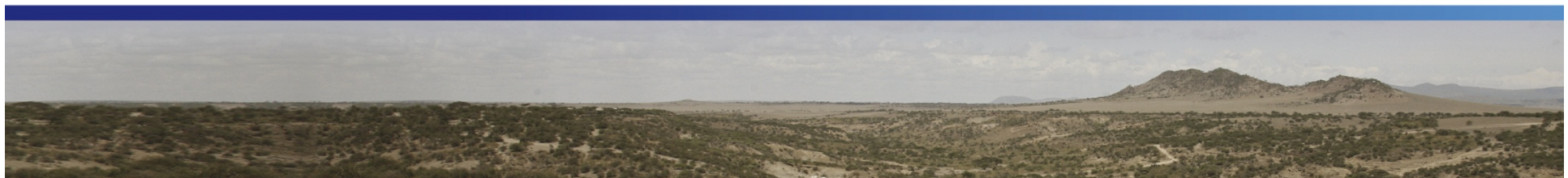
- **CURRENT PROJECT STATUS**

- **GOLDEN PRIDE NORTH PROJECT**
- **NYAMAGOMA**
- **SUGUTI, SARAMA, BUHEMBA SOUTH EAST**

- **TENEMENTS ACQUIRED**

- **PIPELINE PROJECT EVALUATIONS**

On track and on plan



TENEMENTS GRANTED

- FAST TRACKED TENEMENT PROCESSING

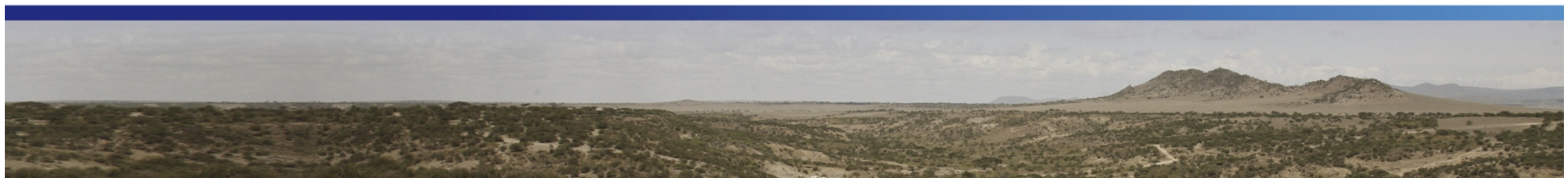
- Suguti PL7140 (76.84km²)
- Sarama PL7141 (8.58km²)
- Sungwa PL7328 (170.43km²)

On track and on plan

- PLANNED FIRST PASS EXPLORATION COMPLETED

Golden Pride North
Suguti
Sarama
Buhemba SE
Mambari
Chibango

Miyabi
Nyasiri
Kanegele
Kasabuya
Nyamagoma



CURRENT PROJECT STATUS

- **GOLDEN PRIDE NORTH**

- Detailed field mapping completed
- Two phases of soil sampling program completed
- Drill program planned

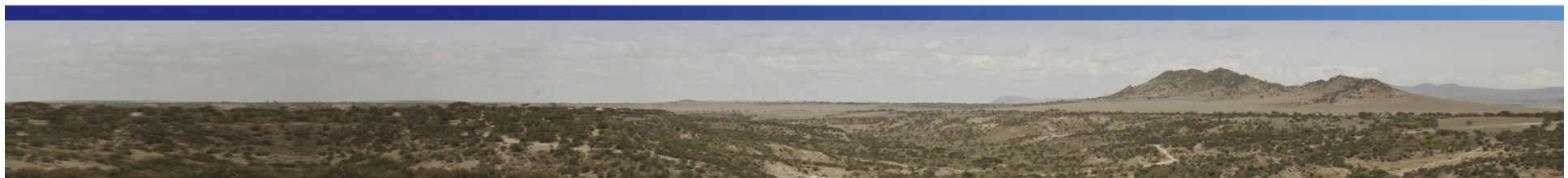
On track and on plan

- **SUGUTI, SARAMA, BUHEMBA SOUTHEAST**

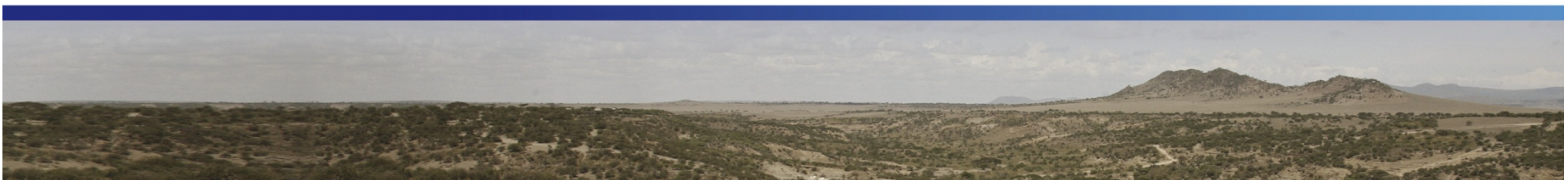
- Detailed field mapping completed
- First phase of soil sampling program completed
- Results received

- **MAJI MOTO**

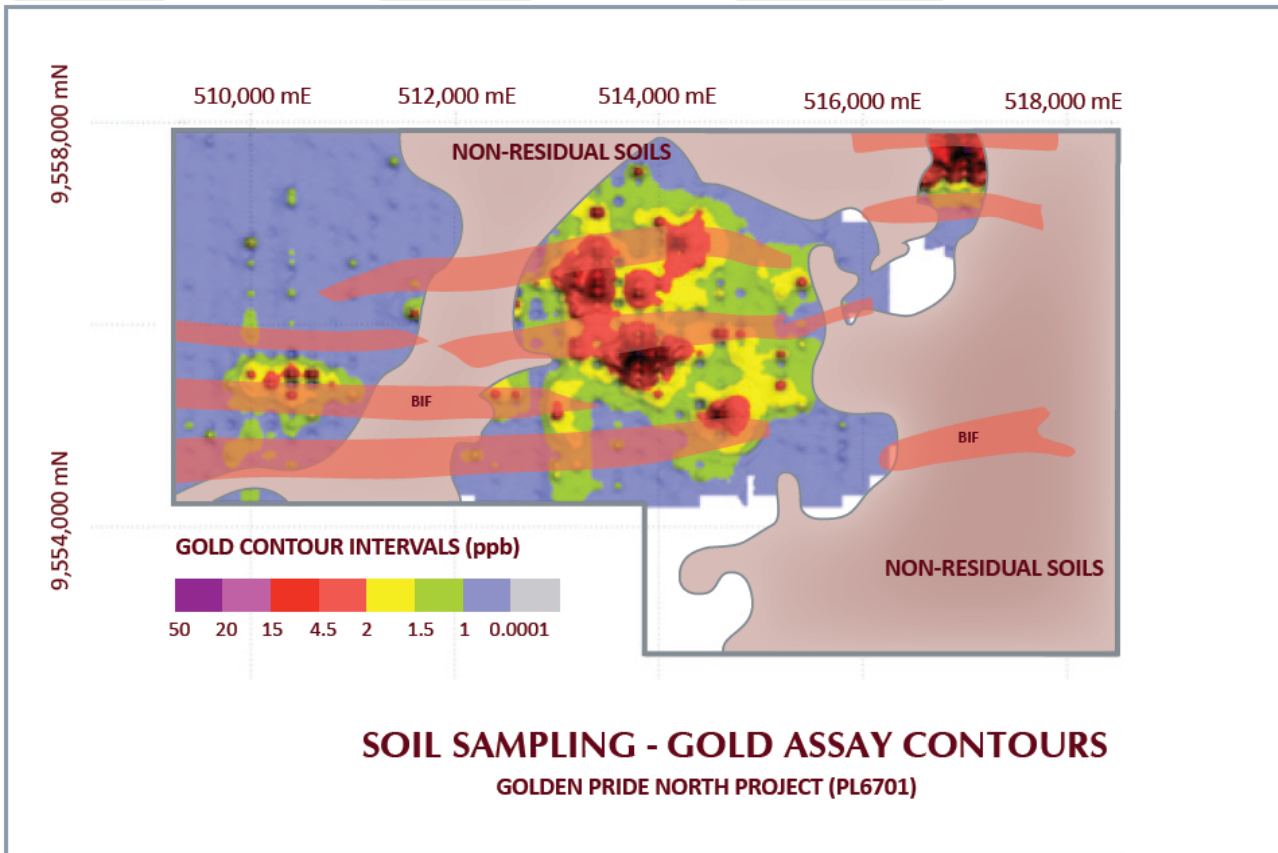
- Detailed Field mapping underway
- Soil sampling program underway
- Drill program planned



GOLDEN PRIDE NORTH

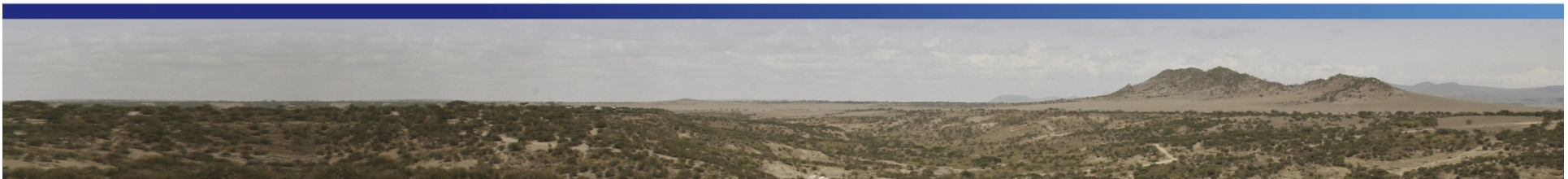


GOLDEN PRIDE NORTH

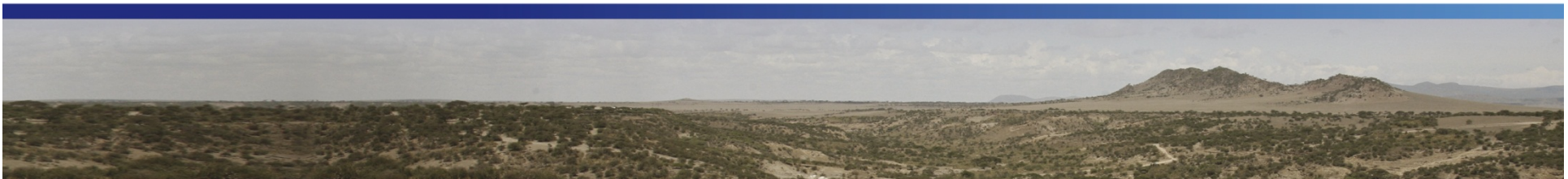
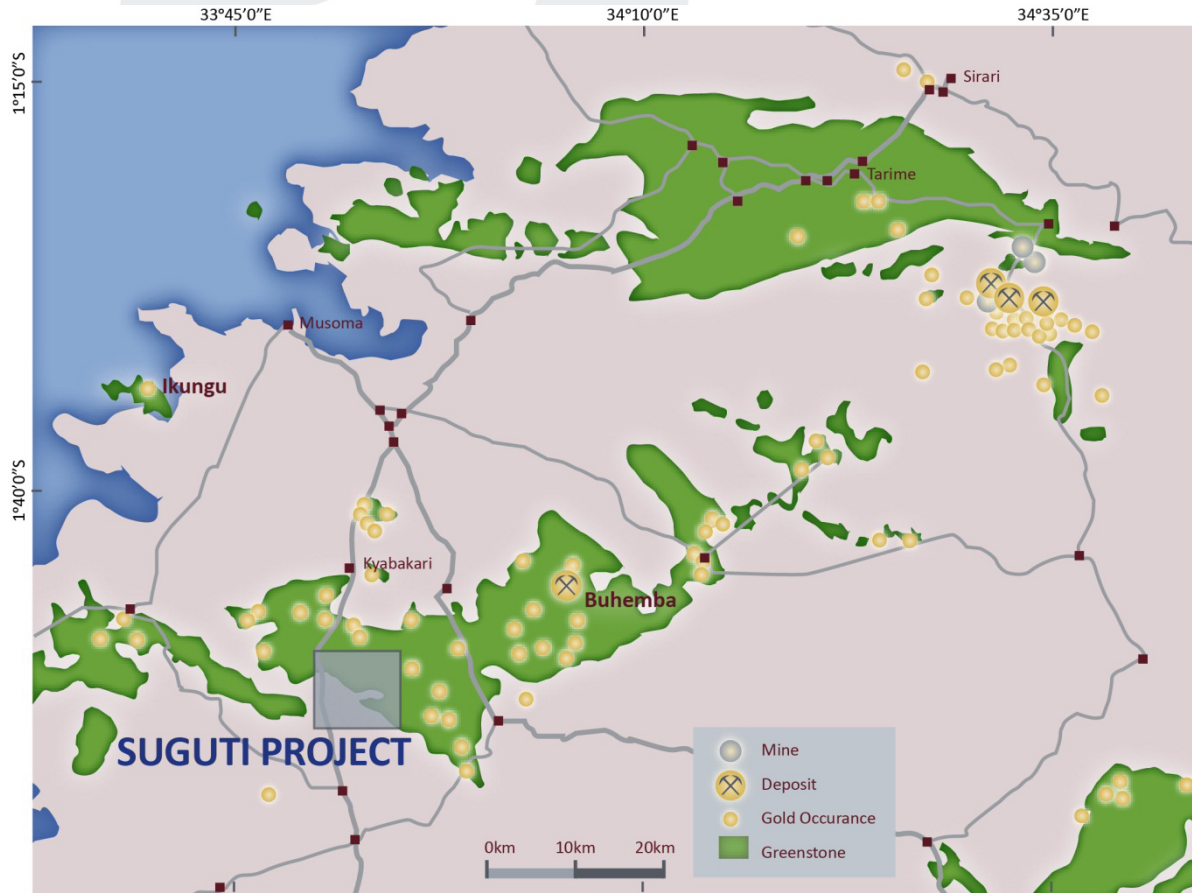


*Positive results
Drilling planned*

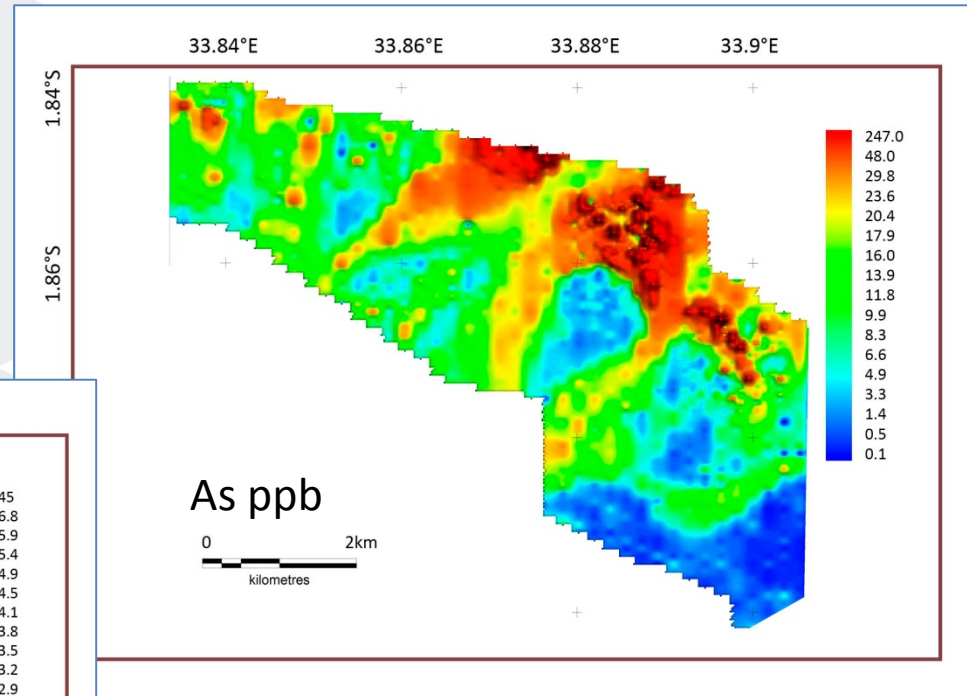
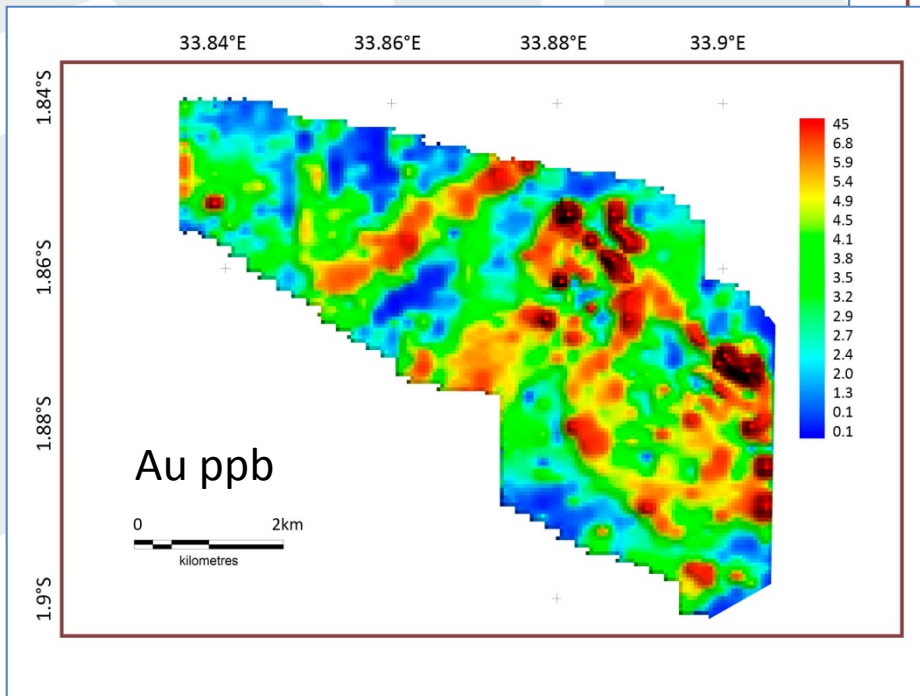
RVR
RIFT VALLEY
RESOURCES LIMITED



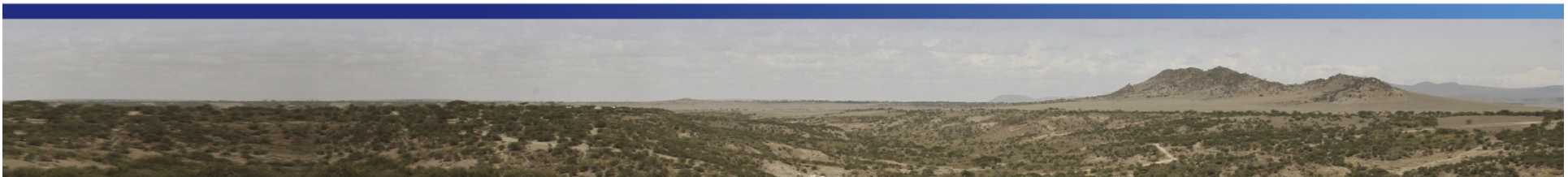
SUGUTI



SUGUTI



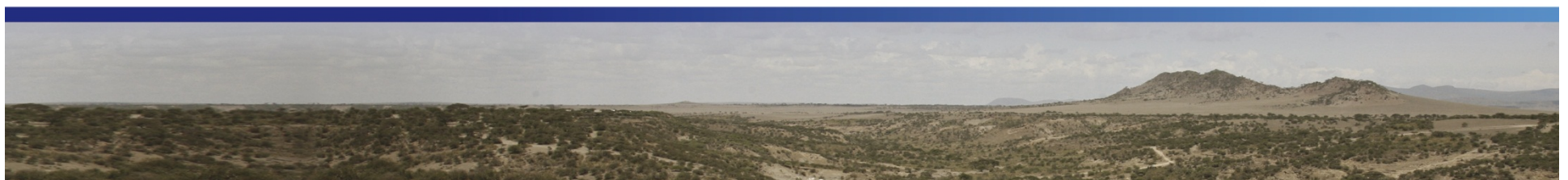
*Positive results
Further work planned*



SUGUTI



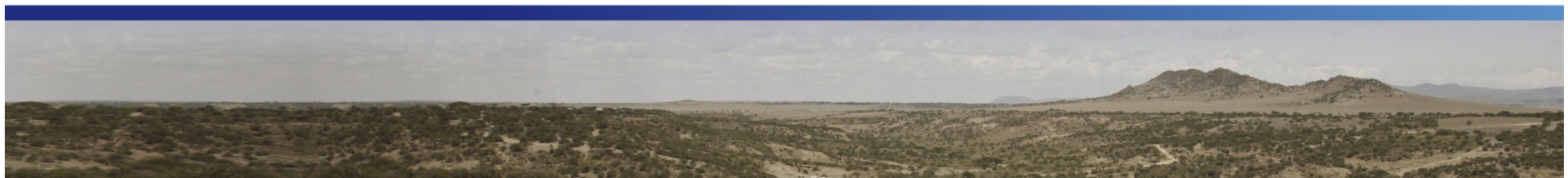
Artisanal workings



TENEMENT ACQUISITIONS

- **THREE KEY PROJECTS ACQUIRED**
 1. MAJI MOTO (3 TENEMENTS) 97 SQUARE KILOMETRES
 2. IGANDO (2 TENEMENTS) 24 SQUARE KILOMETRES
 3. GEITA EAST (1 TENEMENT) 51 SQUARE KILOMETRES
- **EXPLORATION PROGRAMS PLANNED OR UNDERWAY**

Acquisitions

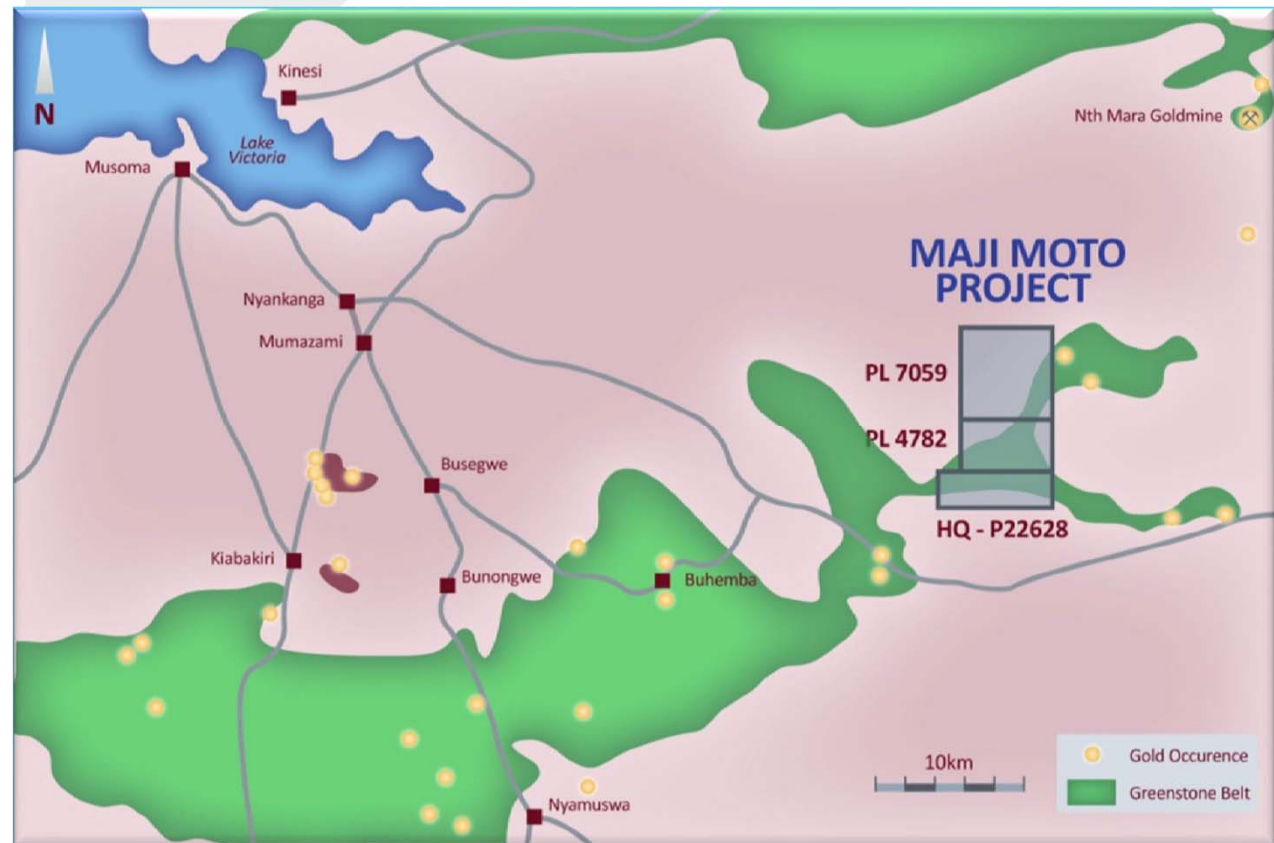


MAJI MOTO

Colonial mine

MAJI MOTO PROJECT

- 28 kilometres south-west of multi-million ounce North Mara gold mine.
- Numerous gold occurrences and gold workings surrounding the old Maji Moto gold mine (1950s).
- Several significant gold targets already identified
- Initial drilling planned for December 2011

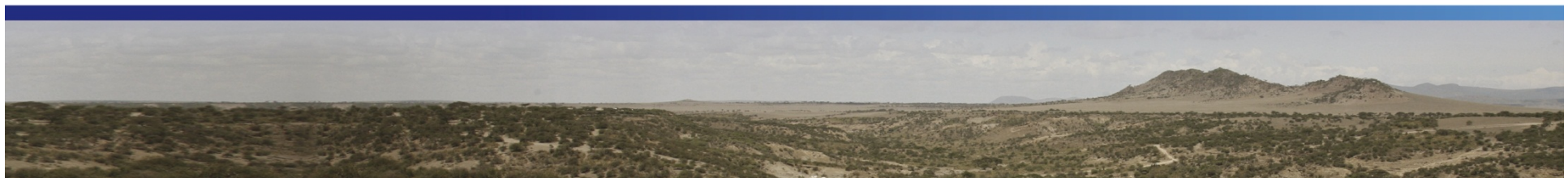


COLONIAL MINES

Operating Gold Mines		
Deposit	Size	Opened
Bulyanhulu	18.0 Moz	2001
Geita	16.0 Moz	2000

Non-Operating Mines		
Deposit	Size	Closed
Buhemba	2.0 Moz	2002
Buckreef	0.2 Moz	1960s
Kiabakari	0.15 Moz	1950s
Maji Moto	?	1950s
Phoenix	?	1930s

Some Colonial mines have become large modern mines



IGANDO AND GEITA EAST

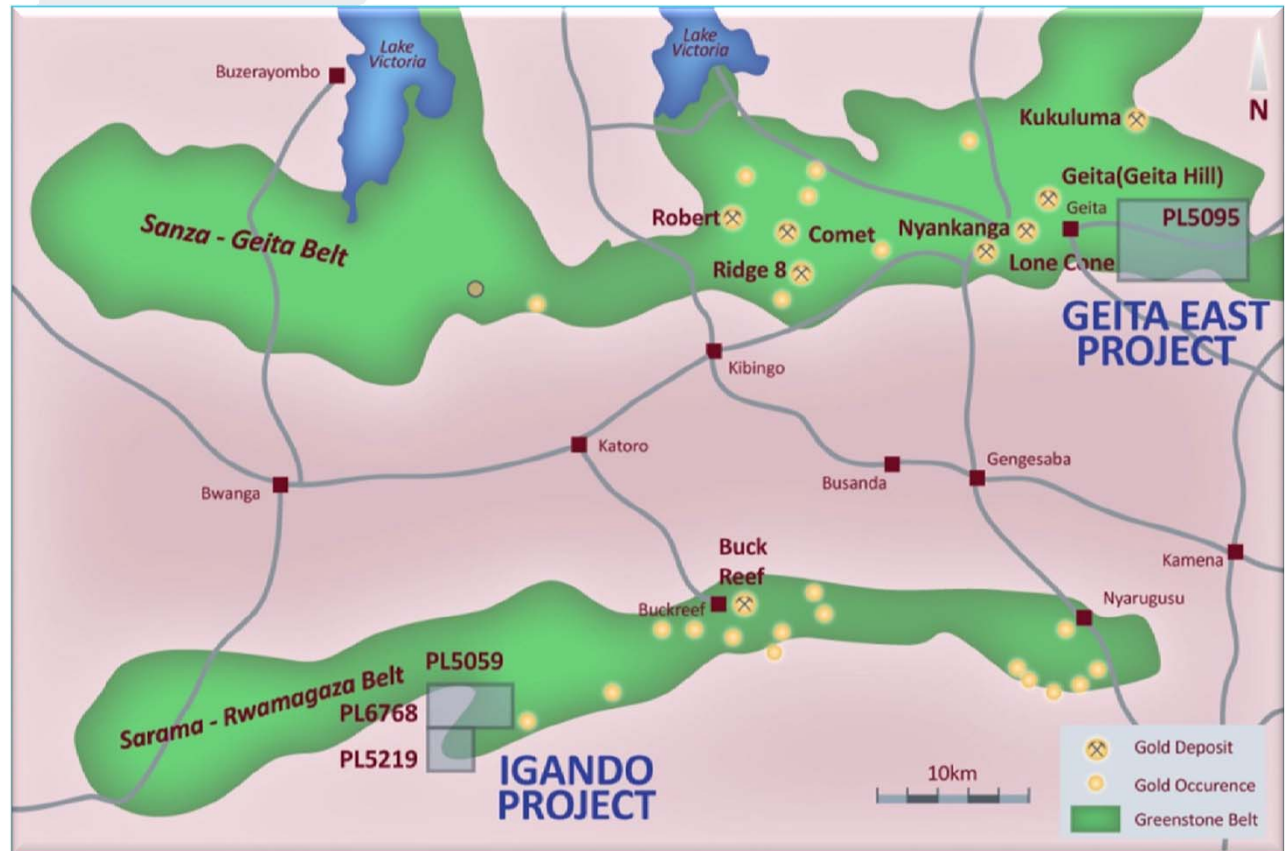
Gold being mined today

IGANDO PROJECT

- Rwamagaza greenstone belt includes Tulawaka, Buckreef and Mnekezi
- 90% of area over greenstone rocks
- Gold workings both in and adjacent to the property

GEITA EAST

- 4km from AngloGold's 16Moz Geita Mine
- Gold workings in a major shear structure

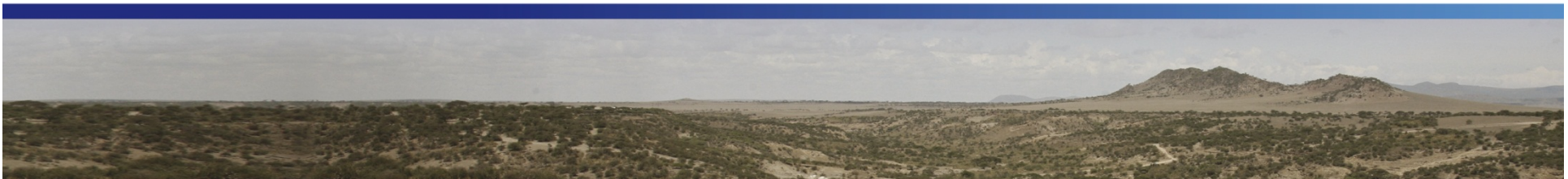


PIPELINE OF PROJECTS

TO DATE

- More than twenty separate potential vendors
- More than seventy different tenements assessed
- 5 further high priority opportunities targeted
- Assessments and negotiations continuing

Acquisition opportunities



EXPLORATION

- ACTIVE TANZANIAN DRILLING COMPANIES

- Major Drilling
- Capital Drilling
- Ausdrill
- Layne Drilling (Stanley's)
- TanDrill

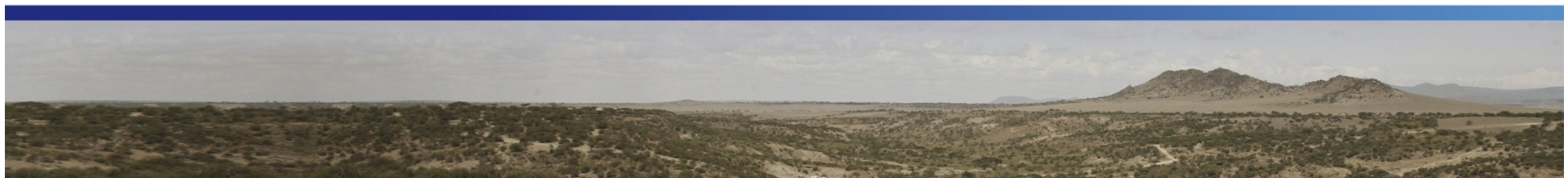
Exploration resources available

- ASSAY LABORATORIES

- SGS
- ALS

- CLIMATE

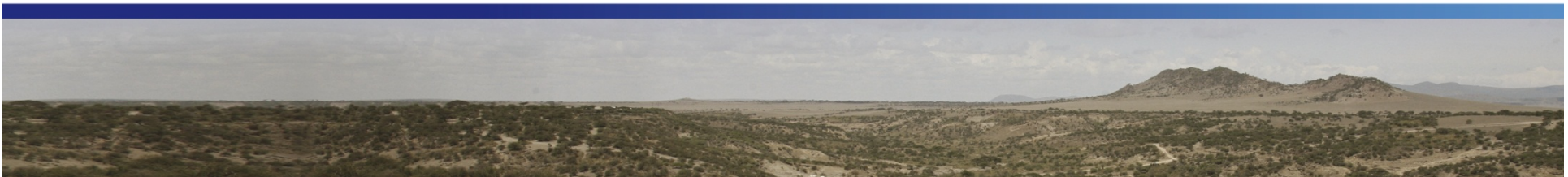
- Can drill with less rain disruptions than other areas in Africa
- Rainfall effects dissipate quickly



PLANNED TIMELINE 2011/ 2012

- **DECEMBER**
 - First phase drilling planned GPN and Maji Moto
 - Igando and Geita East exploration programs
- **JANUARY**
 - Igando and Geita East exploration programs
- **FEBRUARY**
 - Next phase Maji Moto and GPN activity based on results
- **MARCH**
 - Igando and Geita East drilling?

Near term Schedule





Thank you

