



**RIFT VALLEY
RESOURCES LIMITED**

ABN 88 147 483 341



STATUS UPDATE

July 2011

DISCLAIMER

This presentation may contain certain forward looking statements and projections regarding: estimated, resources and reserves; planned production and operating costs profiles; planned capital requirements; and planned strategies and corporate objectives.

Such forward looking statements/projections are estimates for discussion purposes only and should not be relied upon. They are not guarantees of future performance and involve known and unknown risks, uncertainties and other factors many of which are beyond the control of Rift Valley Resources Limited. The forward looking statements/projections are inherently uncertain and may therefore differ materially from results ultimately achieved. Rift Valley Resources Limited does not make any representations and provides no warranties concerning the accuracy of the projections, and disclaims any obligation to update or revise any forward looking statements/projects based on new information, future events or otherwise except to the extent required by applicable laws.

Any information in this report that relates to Exploration Results, Mineral Resources or Ore Reserves is based on information compiled by Mr Michael McKeivitt, who is a Member of The Australasian Institute of Mining and Metallurgy who is a full-time employee of the company. Mr Michael McKeivitt has sufficient experience which is relevant to the style of mineralisation and type of deposits under consideration and to the activity which he is undertaking to qualify as a Competent Person as defined in the 2004 Edition of the 'Australasian Code for Reporting of Exploration Results, Mineral Resources and Ore Reserves'. Mr Michael McKeivitt consents to their inclusion in the report of the matters based on his information in the form and context in which it appears.



RIFT VALLEY RESOURCES LIMITED

- **SHARES ON ISSUE**
 - 83,500,000
- **CASH AVAILABLE**
 - \$12m
- **BOARD IS EXPERIENCED, EFFECTIVE, AND EFFICIENT**
 - Chairman is Honorary consul for Tanzania
 - Three well-credentialed geologists with extensive African experience



RIFT VALLEY - HIGHLIGHTS

- **GROUND**

- Large parcel of prospective ground in Tanzania (1186sqkm)
- Tanzania is well endowed with minerals
- The right address in Africa

- **PEOPLE**

- Wealth of experience in successful mineral exploration
- Team established in Tanzania
- Strong relationships in Tanzania

- **GROWTH**

- Access to a pipeline of emerging projects



TANZANIA

- Politically stable multi-party democracy.
- Endorsed by World Bank and IMF.
- English & Swahili speaking - British Common Law.
- Mining Act modernized in 2010.
- Globally competitive tax and regulatory framework for investors.
- Endowed with significant mineral resources, yet relatively unexplored.
- Well established mining services industry.
- From no gold production in 1998 to 3rd largest in Africa today.
- Producers include Barrick, AngloGold Ashanti and Resolute.



WORLD CLASS GOLD PROVINCE



LAKE VICTORIA GOLDFIELD

- More than 50moz discovered so far.
- Host to +15moz deposits, such as Bulyanhulu and Geita.
- Underexplored and highly prospective.
- RVR Strategic land holding of over 400 km² near multi million ounce deposits.



HISTORY OF KNOWN DEPOSITS

Operating Gold Mines		
Deposit	Size	Opened
Bulyanhulu	18.0 Moz	2001
Geita	16.0 Moz	2000
Buzwagi	4.0 Moz	2000
North Mara	4.1 Moz	2002
Golden Pride	2.7 Moz	1999

Non Operating Mines		
Deposit	Size	
Buhemba	2.0 Moz	closed 2002
Buckreef	0.2 Moz	1960s
Kiabakari	0.15 Moz	1950s
Phoenix	?	1930s

Other Deposits	
Golden Ridge	2.2 Moz
Nyanzaga	4.2 Moz
Ridge 8	2.2 Moz



DIRECTORS AND SENIOR MANAGEMENT



DIDIER MURCIA – B.Juris, LLB – Chairman

Honorary Consul for Tanzania in Australia. Director of Aminex PLC (LSE), Non-Executive Chairman of Centaurus Metals Limited (ASX) and Non-Executive Director of Gryphon Minerals Limited, (ASX). Previously a director of emerging iron ore producer Gindalbie Metals Limited (ASX)..



KEITH MCKAY - B.Sc (Hons) – Director

Geologist with 40 years technical and corporate experience in the mining industry. Extensive African experience, particularly in Botswana and Tanzania. Formerly Chairman of Gindalbie Metals Limited, Managing Director of Gallery Gold Limited, Australian Managing Director of Battle Mountain Gold Company and Director of Niugini Mining Limited. Currently a director of Centaurus Metals Limited.



MICHAEL McKEVITT – BSc Geology (Hons) - Managing Director

30 years experience in mining and resources. Has worked and lead teams in Africa (Ghana, Burkina Faso, Zambia, and Tanzania), Indonesia, and the Philippines. Member of the Australasian Institute of Mining and Metallurgy and a competent person for reporting Exploration results and Mineral Resources accordance with the JORC Code (2004).



GOSBERT KAGARUKI – MSc – Director

20 years experience in the resource industry as a geologist and GIS expert. Has worked for Dodoma Geological Survey in Tanzania, Rio Tinto (only Tanzanian professional staff member), Southern and Eastern African Mineral Centre (“SEAMIC”) and Barrick (Tanzania). Managing Director of Interactive Earth Imaging Limited, providing detailed geological advice to a number of exploration and mining companies, including BHP Billiton, Uranex Limited, Resolute Limited and Midland Minerals.



COMPANY SECRETARY / CONSULTANTS



ROWAN CAREN - B.Com, CA - Company Secretary

18 years commercial experience as a Chartered Accountant. Involved in the minerals exploration industry for over ten years and in 2004 created a specialist company secretarial and advisory consultancy, Dabinett Corporate Pty Ltd. Provides financial and corporate services to several listed and unlisted companies involved in the resources sector.



STEPHEN PARSONS - BSc(Hons) Geology – Consultant

Managing Director and founder of ASX listed gold exploration company, Gryphon Minerals Limited, with a market capitalisation of over AU\$450m. Extensive experience in mineral exploration throughout Australia and Africa where he has worked for a variety of exploration and mining companies, from junior explorers to multinational mining houses, exploring for a variety of commodities including gold, base metals and PGE's.



HAMISH HALLIDAY - BSc (Geology) - Consultant

Extensive corporate and technical experience in all aspects of mineral exploration and development. Co-founder and Managing Director of Venture Minerals Ltd., listed on the ASX with a market capitalisation of over AU\$100 million. Previously Managing Director of Adamus Resources Limited, a company that he grew into a multi million ounce emerging gold producer.



TANZANIAN SENIOR MANAGEMENT

BARTHOLOMEW MKINGA - Exploration Manager

Recent role

- Exploration Manager , Resolute (Tanzania) Limited since 2006.

Significant achievements;

- 4.54 million ounce Nyanzaga (Tusker) gold deposit,
- Developed the gold resource at Bulyanhulu, and
- Defined several other gold targets currently in development.

ABIEL KYAMANYWA – Senior Exploration Geologist

- Specialising in the Lake Victoria Gold Fields, including 12 years with AngloGold Ashanti. Has lead numerous successful exploration programs in Tanzania.

ENEA MINGA – Finance and Administration

- BCom, MBA, Certified Public Accountant
- Most recently worked with Anglo-American in the DRC as Finance and Administration Manager.
- Also Barrick Exploration Africa – responsible for Kabanga Nickel Company, Kagera Mining, Pangea Minerals as Senior Accountant and Administration officer.



PIPELINE OF PROJECTS

TO DATE

- Ten separate potential vendors
- More than sixty different tenements
- 4 high priority opportunities covering 25 tenements
- Negotiations and assessments continuing



RIFT VALLEY - RECENT ACHIEVEMENTS

PROGRESS IS AS PLANNED AND AS EXPECTED.

- IPO successfully completed (on 19th May, well over-subscribed)
- Tenement acquisitions completed/applications granted
- Established offices (Perth and Tanzania)
- In country team established
 - (includes high level Exploration Manager)
- Exploration Programs
 - First phase sampling program completed on Golden Pride North
 - Nyamagoma detailed mapping completed
- Numerous opportunities under consideration



TENEMENTS GRANTED

- **FAST TRACKED TENEMENT PROCESSING**
 - Suguti PL7140 (76.84km²)and
 - Sarama PL7141 (8.58km²)
- **PLANNED EXPLORATION PROGRAMS CAN NOW COMMENCE ON THESE LICENCES.**



EXPLORATION UPDATE

- **GOLDEN PRIDE NORTH**

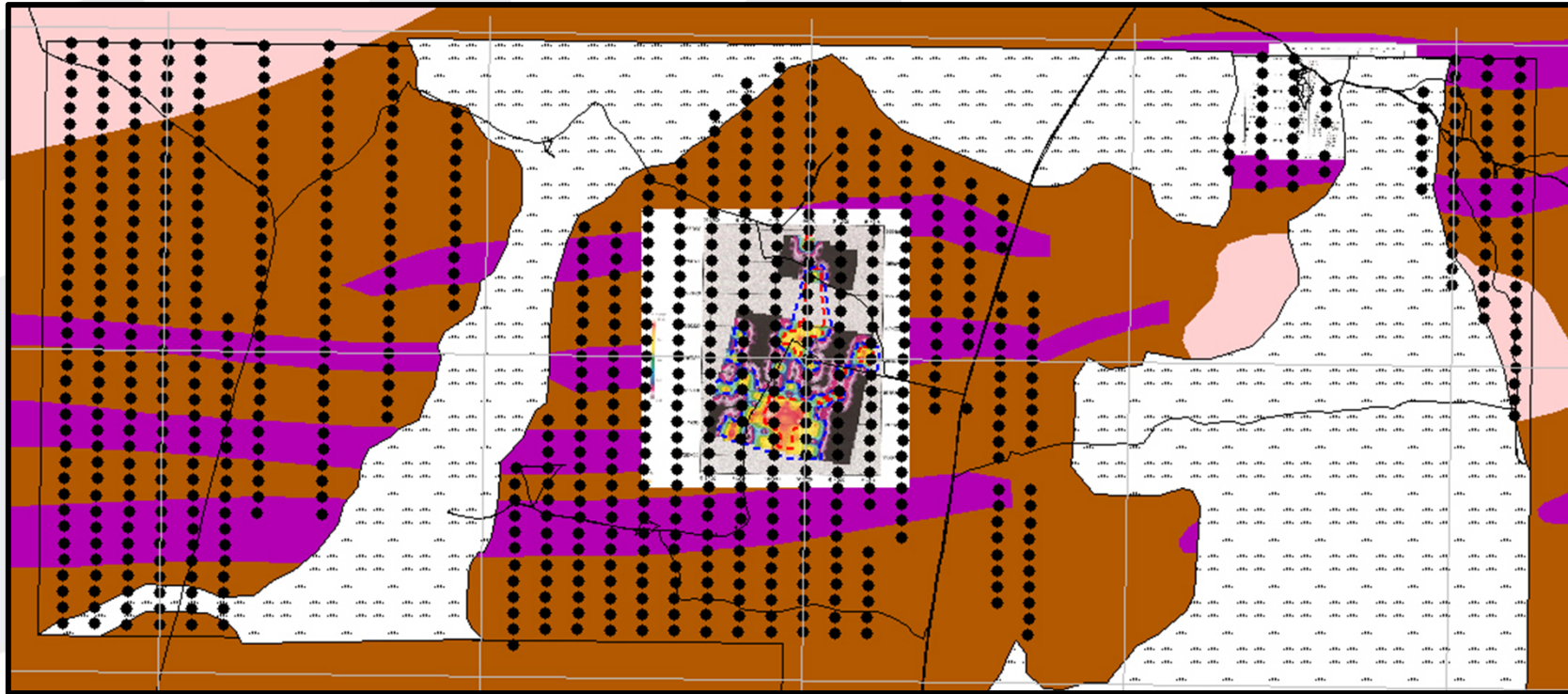
- Detailed Field mapping completed
- Soil sampling program completed

- **NYAMAGOMA**

- Detailed Field mapping completed
- Soil sampling program planned



GOLDEN PRIDE NORTH




RIFT VALLEY
RESOURCES LIMITED



EXPLORATION RESOURCES

- **ACTIVE TANZANIAN DRILLING COMPANIES**
 - Major Drilling
 - Capital Drilling
 - Ausdrill
 - Layne Drilling (Stanley's)
 - TanDrill
- **ASSAY LABORATORIES**
 - SGS
 - ALS
- **CLIMATE**
 - Can drill with less rain disruptions than other areas in Africa
 - Rainfall effects dissipate quickly



PLANNED TIMELINE 2011

- **AUGUST**
 - Continue to advance property negotiations
 - Continuing exploration
- **SEPTEMBER**
 - Soil sampling assays for GPN expected
- **OCTOBER/NOVEMBER**
 - First phase drilling planned
 - Drilling companies available and active

