



Developing a large scale exploration opportunity into a production focused mining company

July 2011

COMPLIANCE LISTING
VEHICLE – STRATEGIC POOLED DEVELOPMENT LTD
ASX - SPD

This presentation contains important information and should be read in its entirety

All currency figures are in A\$



IMPORTANT NOTICES

This presentation has been prepared by Strategic Pooled Development Limited (**SPD**) and is provided solely for information purposes so that you may consider an invitation to participate in the proposed initial public offering of ordinary shares (**Shares**) in the capital of SPD (**Offer**), to be made under a prospectus (**Prospectus**) under Chapter 6D of the Corporations Act 2001 (Cth) (**Corporations Act**) and to be lodged with the Australian Securities and Investments Commission (**ASIC**).

This presentation is in relation to a fundraising by SPD as part of its proposed acquisition of all of the issued capital of Resolve Coal Pty Ltd (**Resolve**) but does not contain all of the information about Resolve's assets and liabilities. This material is given in conjunction with an oral presentation and other more detailed documents and should not be taken out of context. Although the information contained in this presentation is based upon generally available information and has been obtained from Resolve and third party sources believed to be reliable, SPD does not guarantee its accuracy, and such information may be incomplete or condensed.

To the extent permitted by law, SPD and Resolve and each of their officers, employees, agents and advisers do not accept liability to any person for any direct, indirect or consequential loss or damage arising from the use of this presentation, including any error or omission, or otherwise arising in connection with it.

This presentation is not an offer document, information memorandum, prospectus or product disclosure statement. It has not been, and will not be, lodged with ASIC. This information is confidential and is being delivered to you in order to assist you in determining whether to request a prospectus to allow you to invest in SPD and is solely for internal use.

This presentation does not provide investment advice or offer investment, tax, regulatory, accounting or legal advice. Unless stated otherwise, the material contained in this presentation has not been based on a consideration of any individual client circumstances and as such should not be considered to be a personal recommendation. It has been prepared without taking account of individual client objectives, financial situation or needs. As such, the information contained is general in nature only and should not be considered to be personal advice or investment advice of any kind. No fiduciary relationship exists between you and SPD or Resolve and neither SPD nor Resolve owes any obligations to you.

IMPORTANT NOTICES (Cont.)

Before acting on the information in this presentation, you should consider the economic risks and merits, as well as the legal, tax, regulatory and accounting characteristics and consequences, of the proposed transaction and the appropriateness of the information in this presentation in view of your own objectives, financial situation and needs and in consultation with your own investment, legal, tax, regulatory and accounting advisors. To the extent any prices or price levels are noted, they are for informational purposes only and are not intended for use by third parties and are indicative as of the date shown and are not a commitment by SPD to trade at any price. Hypothetical performance results have many inherent limitations.

No representation is being made that SPD will or is likely to achieve profits or losses similar to those shown. Any estimates, projections or predictions (including in tabular form) given in this presentation are intended to be forward-looking statements.

Although SPD and Resolve believe that the expectations in such forward-looking statement are reasonable, no assurance can be given that any forward-looking statements will prove to be correct. Such estimates are subject to actual known and unknown risks, uncertainties and other factors that could cause actual results to differ materially from those projected. Past performance in no guarantee of future performance.

This presentation is provided to you on the basis that you are, and you represent and warrant that:

If you are in Australia, you are a "professional investor" or "sophisticated investor" (as those terms are defined in sections 708(8) and 708(11), respectively, of the Corporations Act); and If you are outside of Australia, you are a person to whom an offer and issue of shares may be made outside of Australia without registration, lodgement or approval of a formal disclosure document or other filing in accordance with the laws of that foreign jurisdiction. If you are not such a person, please do not read or otherwise view this presentation. Please return it immediately to SPD and destroy or delete any copies.

The contents of this presentation are strictly confidential and must not be photocopied, reproduced, disclosed or distributed to any other person without the prior written consent of SPD. This presentation is for the exclusive use of the persons to whom it is provided. Upon request a recipient must promptly return all material received from SPD (including this presentation) without retaining any copies.

In the notices all currency figures are in Australian dollars.

TABLE OF CONTENTS

1. Investment Overview
2. Offer Details
3. Introducing Resolve Energy Ltd
4. Queensland Coal Assets
5. Canadian Coal Assets
5. Development Plans
7. Key Risk Summary
8. Contacts
9. Annexures
 - a) Queensland Coal Markets
 - b) Queensland Coal Summary
 - c) Bowen Basin Assets
 - d) Galilee Basin Assets
 - e) Canadian Assets

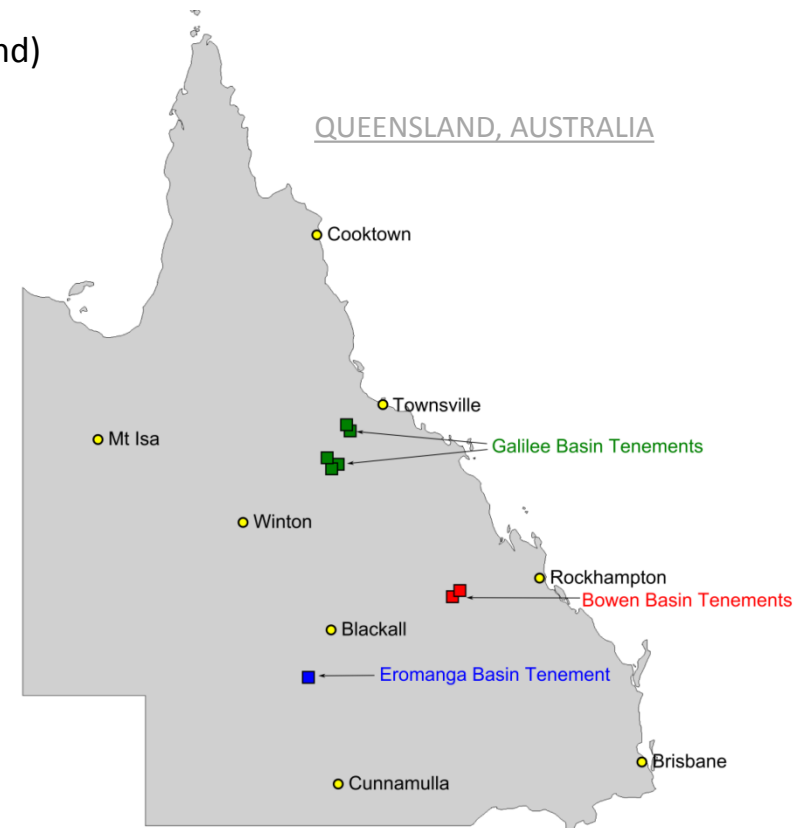


1. INVESTMENT OVERVIEW



INVESTMENT HIGHLIGHTS

- Portfolio of high quality exploration assets, from proven Queensland target generators (**Bandanna Energy Ltd.**).
- Thermal and coking coal tonnage potential (Exploration Targets), early stage resource definition
- Excellent mix of near term and mid term development projects
- Development timelines well developed, drill rigs contracted, technical staff in place
- Over **1568.11 Km²** of exploration areas in premier coal basins within Queensland and British Columbia (Canada)
- Experienced management and technical team with 14 experienced in-house geologists
- All tenements **owned 100%**
- Already in discussion with port and rail developers (Queensland)



COAL EXPLORATION TARGETS

	Tenure No.	Name	Coal Type	Mining Method	Exploration Target (MT) (Lower Estimate)	Exploration Target (MT) (Upper Estimate)
Australia	EPC1954	Jeffries Creek	Thermal/PCI /Coking ?	OC	120	230
				UG	770	1,440
	EPC1969 & EPCA 1857	Lake Powlathanga & Trafalgar	Thermal	OC	320	540
	EPC1663, 1754, EPCA 2050	Pigeonhole Creek, Bully Creek, Row Creek	Thermal	OC	5,950	10,090
	EPC1673	Sherwood Park	Thermal	OC	1,420	2,430
Canada	British Columbia	Adams	Coking	OC/UG	90	270
	British Columbia	Mt Spieker	Coking	OC/UG	26	46
	TOTALS (MT)			AUSTRALIA	8,580	14,730
	TOTALS (MT)			CANADA	116	316
	TOTALS (MT)			ALL	8,696	15,046

Exploration Targets have insufficient information at this time to define a Mineral Resource that would satisfy the JORC Code and it is uncertain how much of this potential will be converted into a JORC compliant Resource with further drilling.

DEVELOPMENT TIMETABLE

Resolve Energy’s portfolio of coal assets contains 5 tenements within 7 km of existing rail infrastructure. Resolve Energy is currently in discussion for port and rail allocation within Queensland.

Project	Calendar Year					
	2012	2013	2014	2015	2016	2017
Australia						
Jeffries Creek	JORC Inferred & Indicated	JORC Measured Pre Feasibility	Pre Feasibility	Full Feasibility Completion of EIS and ML Application	Mine Development Production	Production
Lake Powlathanga Trafalgar	JORC Inferred & Indicated	JORC Measured Pre Feasibility	Full Feasibility Completion of EIS and ML Application	Mine Development Production	Production	Production
Pigeonhole Creek, Bully Creek, Row Creek	JORC Inferred & Indicated	JORC Measured Pre Feasibility	Pre Feasibility	Full Feasibility Completion of EIS ML Application	Mine Development Production	Production
Gindie	Resource Identification JORC Inferred	JORC Indicated	JORC Measured	Pre Feasibility	Full Feasibility Completion of EIS	ML Application/Mine Development
Sherwood Park	Geological Testing, Resource Identification	JORC Inferred	JORC Indicated	JORC Measured	Full Feasibility Completion of EIS	ML Application/Mine Development
Canada						
Adams & Adams West,	JORC Inferred & Indicated	JORC Measured	Pre Feasibility	Full Feasibility Completion of EIS	Mine Development Production	Production
Mt Spieker North & South	JORC Measured Pre Feasibility	Full Feasibility Completion of EIS	ML Application Mine Development	Mine Development Production	Production	Production

6. OFFER DETAILS



OFFER DETAILS

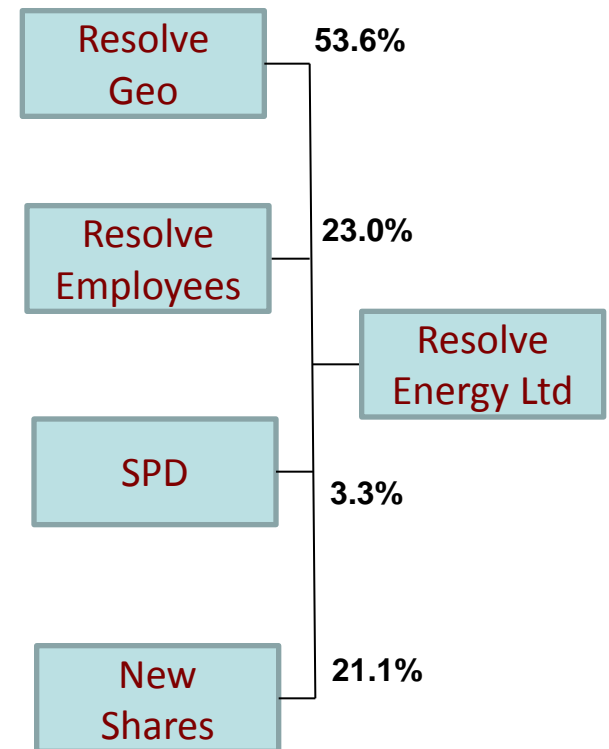
Proposal – Compliance listing Resolve Energy Ltd via Strategic Pooled Development Ltd (ASX – SPD)

Capital Raising:		\$25.0 m 41.67 m shares @ A\$0.60 each
Acquisition Cost:	Resolve Coal	\$95.5 m
To be satisfied by:	Issue fully paid share	111.30 m
	Resolve Employee options	47.86 m
	Total shares / options for acquisition	159.16m

CAPITAL STRUCTURE

SPD Shares (post 5 for 1 consolidation)		6.9m
Resolve Energy Shares	111.30m	
Resolve Energy Options	<u>47.86m</u>	
		159.16m
Capital Raising		41.67m
Total Issued Capital		207.44m
Options (various)		5.33m
Market Capitalisation (at \$0.60)		\$124.64m
Cash on hand		\$28.75m
Enterprise Value		\$95.89m
Escrow Period		2 Years

Shareholding – post-IPO



LISTING TIMETABLE

Event	Due Date
Dispatch of notice of meeting and explanatory statement	5-Aug-11
Lodgement of prospectus with ASIC	5-Aug-11
Opening date of prospectus offer	5-Aug-11
Suspension of Listed Co shares	5-Sep-11
EGM	5-Sep-11
Prospectus closing date *	12-Sep-11
Last day to register transfers on pre-consolidation basis	13-Sep-11
Issue of new shares	16-Sep-11
Dispatch of holding statements	20-Sep-11
Trading in Listed Co shares resume	23-Sep-11

* Indicative only (subject to change).

2. INTRODUCING RESOLVE ENERGY LTD



RESOLVE ENERGY LTD

- Exploration company with a highly prospective portfolio of coal prospects in Queensland and British Columbia (Canada).
- Founded in 1995 by Gordon Saul, a geologist with over twenty years experience, growing a consultancy business into one of the largest in the Queensland coal industry by 2007.
- Proven track record in bringing exploration assets into public companies and growing value through cost effective exploration and continuing target generation.
- Founding shareholder Bandanna Energy Ltd and Tigers Realm Coal Ltd.
- Supervised drilling of over 50,000 coal exploration holes.
- Successfully generated coal exploration tenements nationally and internationally.
- Provided numerous JORC compliant resource estimations for a variety of clients.
- Statutorily compliant management systems, including an industry leading safety management system.
- Completed a large number of geological data acquisition projects from green-fields to mine development, concept to full feasibility.

BOARD OF DIRECTORS



- **Dave Mathew - Chairman** 30 plus years experience in international coal and coal seam gas
- Past executive director for Arrow Energy, past President of the Australian Coal Seam Gas Council Currently director Exoma Energy
- Founding shareholder in Bandanna Energy and DJ Mining. Executive management positions with BHP Billiton and has a PhD in Coal Geology from the University of South Carolina, USA.



- **Gordon Saul – Managing Director** He is a qualified geologist (AIG, AICD) and has been actively involved in the mining sector for 25 years, in particular the coal industry over the past 20 years
- Saul is a foundation shareholder of Bandanna Energy Ltd (BND) and Tigers Realm Coal Ltd (soon to be listed)
- Member of industry geological data standardisation committee.



- **Greg Clark – Non-Executive Director** CEO of Mincom Pty. Ltd. with over 23 years' experience in mining software solutions
- Responsible for the turnaround of Mincom since appointment at Mincom in 2008
- Past President and CEO of E2open
- IBM Distinguished Engineer and Vice President at IBM's Tivoli Systems. Before joining IBM, he founded the security software firm, Dascom, Inc



- **Michael Howard – Non-Executive Director**, 30 plus years engineering experience in the mining industry.
- Capacities with BHP and related companies including manager – 20 plus year experience in open cut and underground coal mining.
- Development, financing and managing of projects (Midwest Corporation Ltd, COO, 2004-2006).

MANAGEMENT



- **Gordon Saul BSc (Hons) AIG, AICD**
Director- Principal Geologist
- 25 years experience in a variety of resource sectors
- Established Resolve Geo in 1996, now one of Queensland's top coal consultancy companies
- Senior management positions in coal exploration and mining companies



- **Darryn Carlile MBA, CA**
Chief Financial Officer
- Has over 20 years of management experience within the general transport and commercial aviation industries
- He has held senior finance and general management, including Qantas & TNT.



- **Bai Bing BSc MBA**
Commercial Manager
- 29 years experience starting as a geophysicist with the Shandong Bureau of Geology, Mineral Resources, China
- Senior Management role for Placer Dome China and Midas Mining China
- Experienced management of exploration programs in coal, gold, nickel and copper

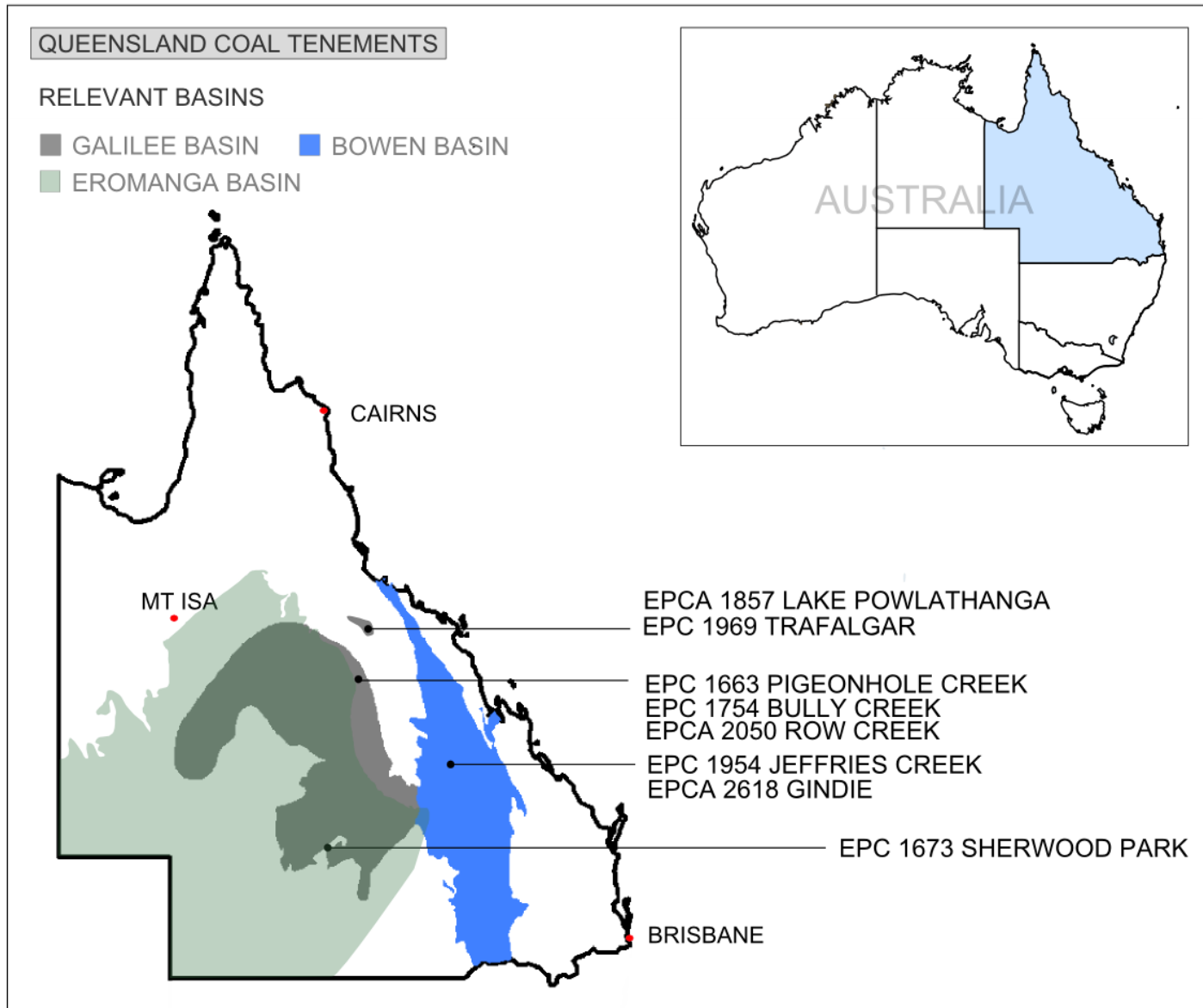


- **Jill Cooper BSc**
Operations Manager
- 10 years experience in the resource industry Development and Implementation of safety management, technical training in accordance with legislation
- Operations management

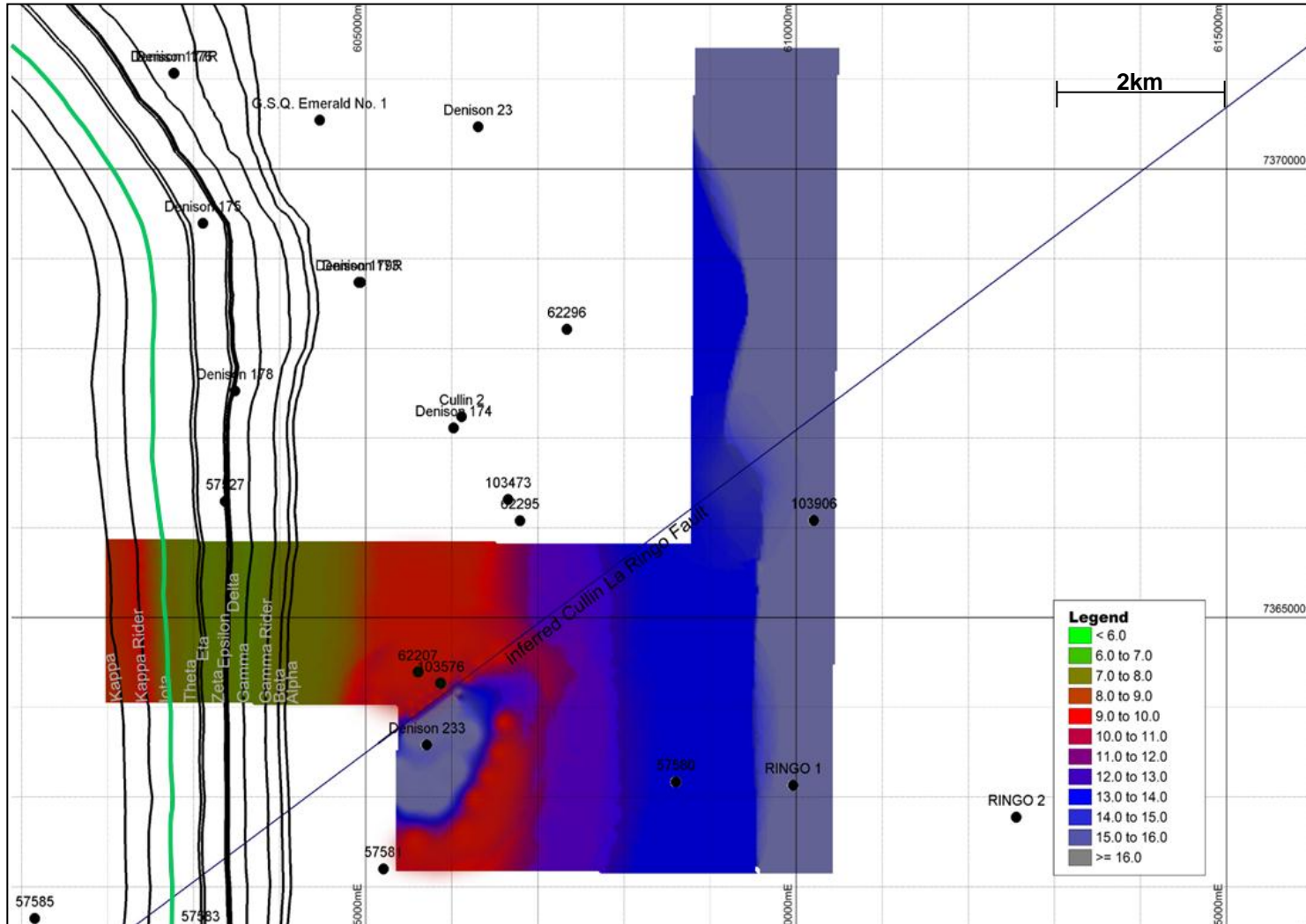
3. QUEENSLAND COAL ASSETS



QUEENSLAND COAL PORTFOLIO OVERVIEW



EPC 1954 JEFFRIES CREEK – STRIP RATIO MAP & SEAM SUBCROP



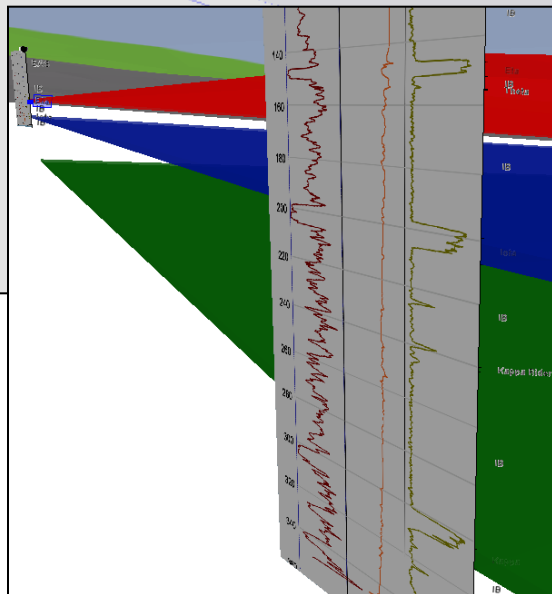
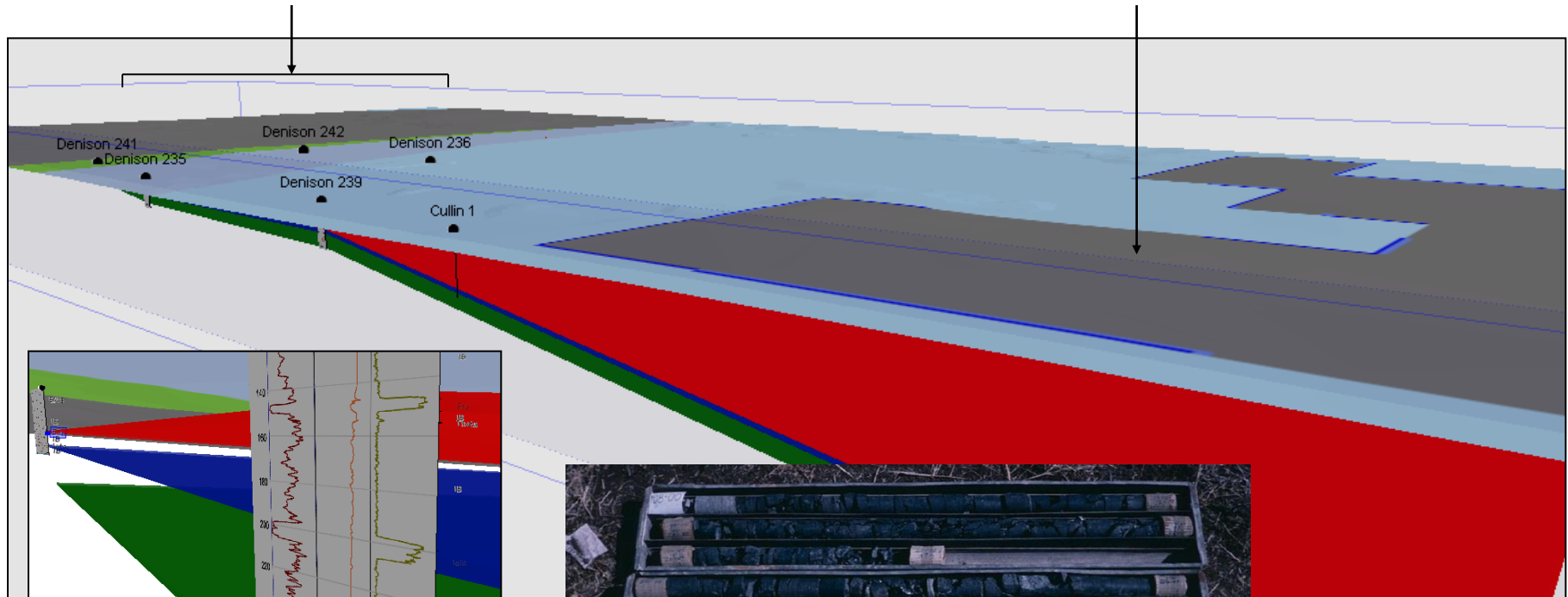
Seam	Coal thickness Average (Metres)
Alpha	0.3m
Beta	0.4m
Gamma Rider	0.4m
Gamma	1.4m
Delta	1.7m
Epsilon	0.3m
Zeta	0.6m
Eta	1.7m
Theta	1.7m
Iota	7.2m
Kappa Rider	0.3m
Kappa	1.9m
Lambda Rider	0.2m
Lambda	1.0m
Mu	1.3m
Nu	1.8m
Xi	0.8m
Omicron Rider	1.1m
Omicron	4.6m
Pi	2.2m
Rho	0.3m

GINDIE – EPCA 2618

- Excellent opportunity for an underground prospect within the Gindie tenement.
- Wells to the east indicate an increase in coal rank from west to east.
- Substantial coal packet with 3 main seams all over 6m in thickness.

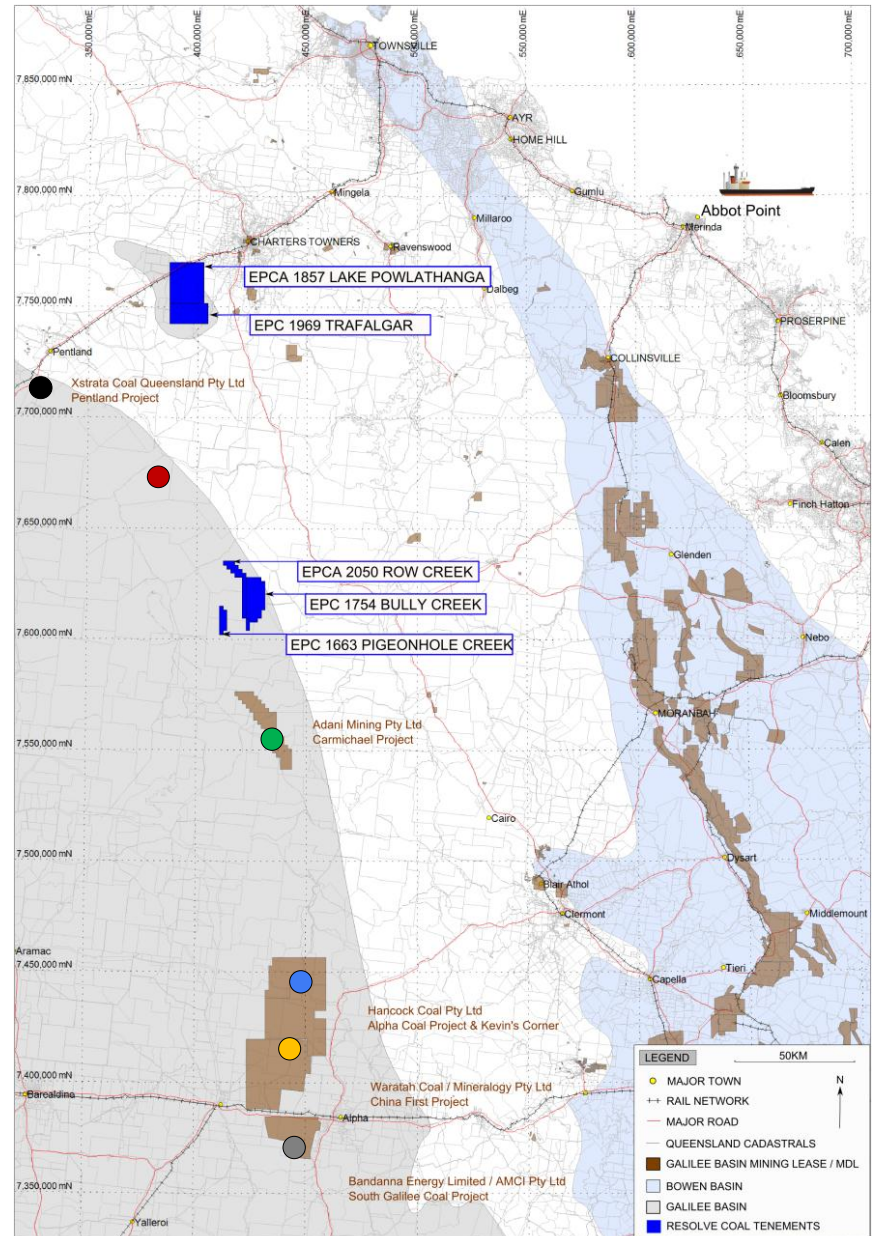
Cullin La Ringo Coal Deposit

EPC 2618 Gindie



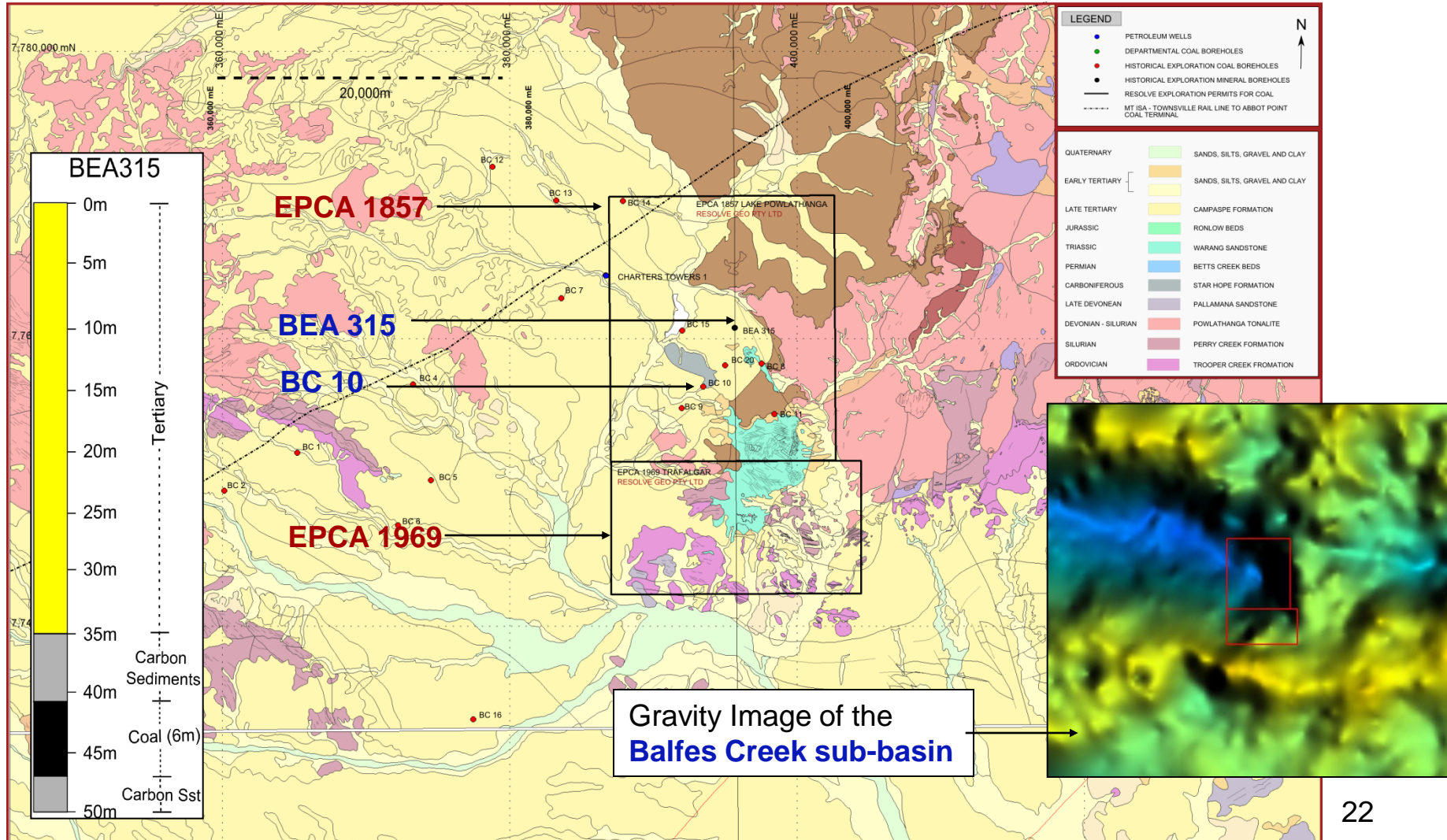
QUEENSLAND COAL GALILEE BASIN PORTFOLIO DISTRIBUTION

- Xstrata & Linc Energy Pentland Project.
- Vale Galilee project.
- Adani Mining Galilee Project. 500 Mt Indicated, 7.8 Bt Inferred. Sold by Linc Energy for \$500m + royalty's (<\$3.0 billion)(10/08/10)
- Hancock Alpha & Kevin's Corner project. Combined resource of 7.9Bt of JORC compliant Coal.
- Waratah's - China First project, 2.2 Bt Inferred, 1 Bt Indicated
- Bandanna/AMCI's Galilee South project. 806 Mt Inferred, 206 Mt Indicated , 166 Mt Measured



GALILEE TENEMENTS - LAKE POWLATHANGA & TRAFALGAR

- **6m of coal at a vertical depth of 41m**, within mineral hole **BEA 315**.
- **2.8m of coal at 40.5m** intersected within mineral hole **BC10**.



GALILEE TENEMENTS

Pigeonhole Creek, Bully Creek & Row Creek

- Substantial outcrops of Warang Sandstone (equivalent to the Rewan Formation) overlying the Betts Creek Beds – in all Resolve Galilee leases.

Mirtna Drilling Program

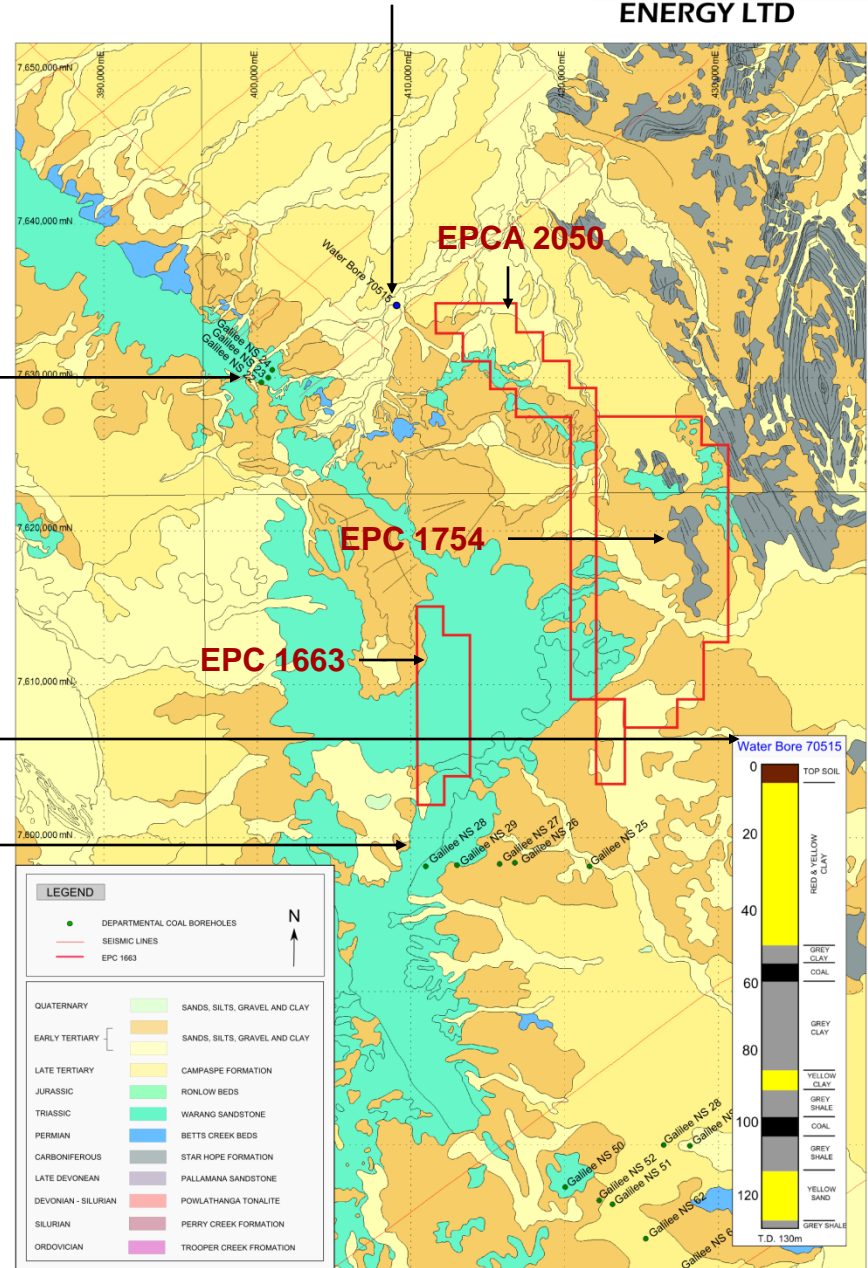
- The Qld Government Mirtna drilling program reported a workable **coal section of 24.53m** (18km to the north of the EPC 1663 and 15km west of EPCA 2050).

- Water Bore 70515** intersected a **4m Coal seam** at 55 meters and a **3m Coal seam** at 99 meters

View Hill Drilling Program

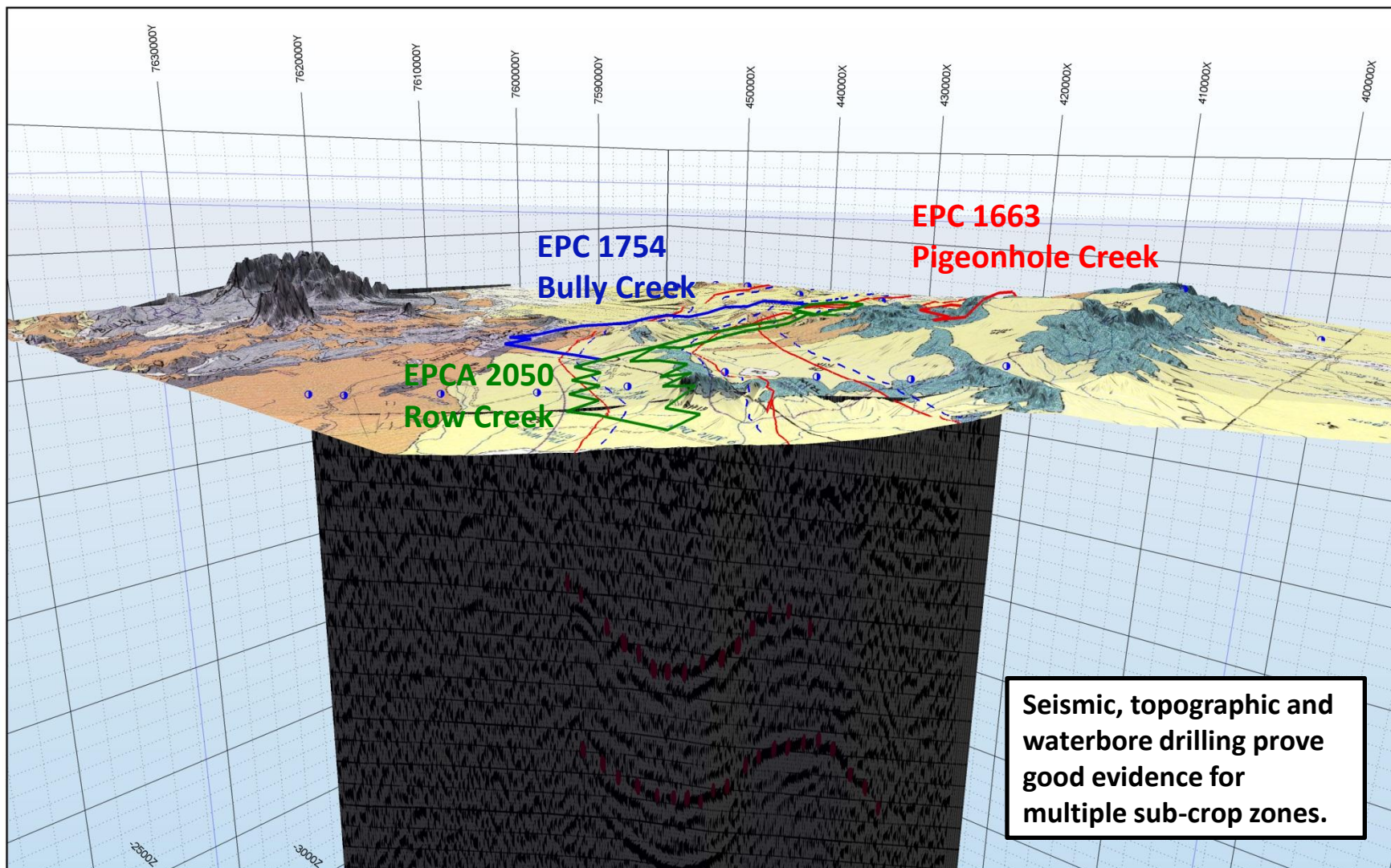
- The Qld Government View Hill drilling program (5km to the south of EPC 1663) identified a workable **coal section of 39.20 m**.

Water Bore 70515



GALILEE TENEMENTS – TOPOGRAPHY

Seismic Integration - Vertical exaggeration x15

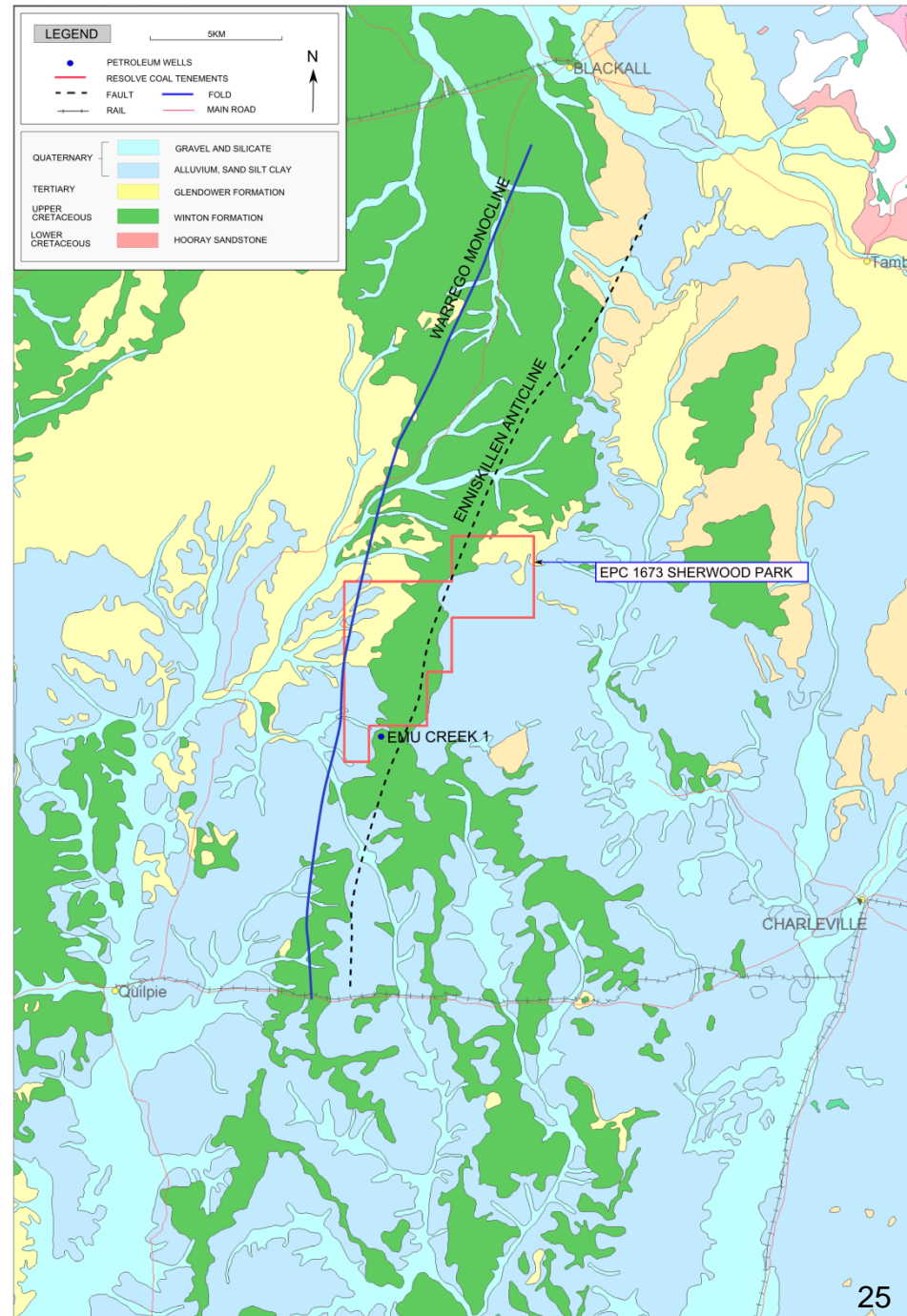


EPC 1673 SHERWOOD PARK

- Targeting thick, low rank coals within the Eromanga Basin's Cretaceous Winton Formation
- Large tonnage potential, open cut mining
- Coal measures similar to Powder River Basin, USA
- Borehole Emu Creek, cumulative coal section of 33m at depths between 80-200m including a 9 metre thick coal section between 110-120m.
- Geophysical data/drilling results indicate that coal seams are shallower on the crest of the NE trending Enniskillen Anticline.
- Abundant coal seams were found between 43-135m in the NE part of the tenement using water bore data.
- EPC 1149 Eastern Energy (50km north) - An Inferred Coal Resource of 1.2 Bt within the Winton Formation.

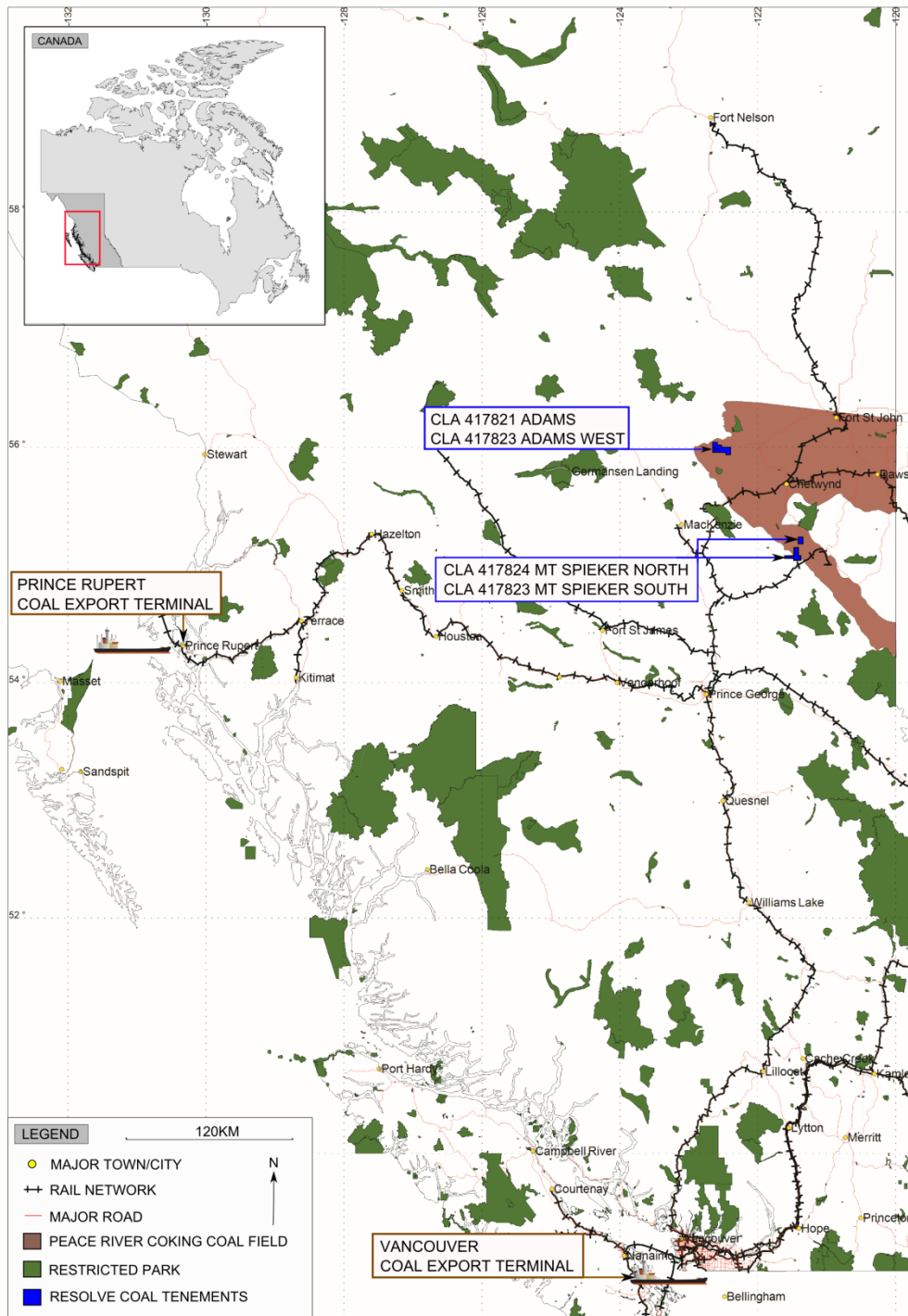
Winton Coal Quality Analysis						
Location	Volatiles %	Fixed Carbon %	Ash %	S %	Specific Gravity	Specific Energy Mj/kg
Augathell a 1968	29.7	32.9	12	0.4	1.377	15.5 – 18.2
Blackall 1974	29.7	43.9	12.6	0.4		19.68

Table: Quality data reported on an Air Dried Basis.



4. CANADIAN COAL ASSETS





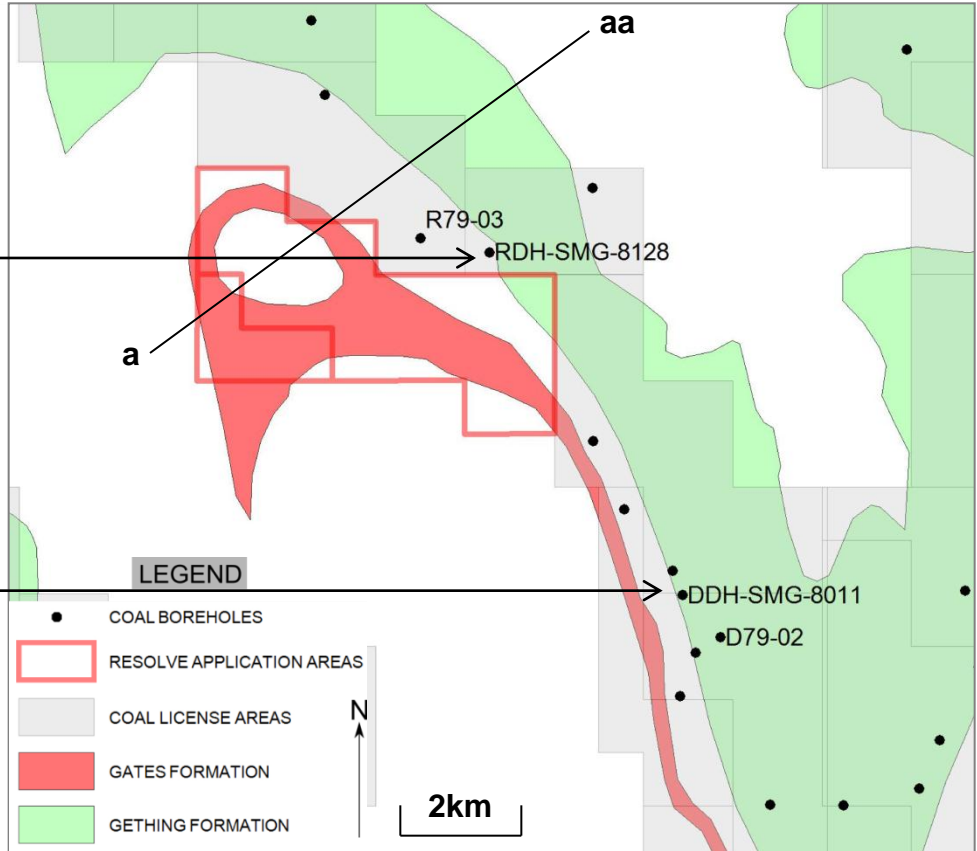
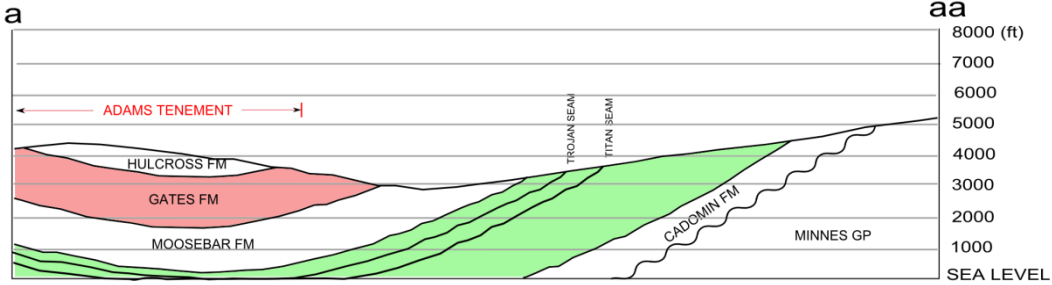
BRITISH COLUMBIA, CANADA

MT SPIEKER AND ADAMS PROSPECTS

ADAMS & ADAMS WEST COAL ENDOWMENT

INTERSECTIONS & COAL QUALITY

- Medium volatile bituminous
- Low ash contents
- Low sulphur contents
- Excellent free swelling indices
- PRIME COKING COAL



RDH SMG 8011 GETHING FORMATION	
Cum (m)	16.52
VM %	26.1 - 36.2
S %	0.48 - 1.08
Raw Ash %	3.87 - 24.79
FSI	1 - 8.5
MJ/kg	25.1-34.4

RDH SMG-8128 GETHING FORMATION	
Cum Coal (m)	6.31
FSI in Target Seams	6.5 - 8

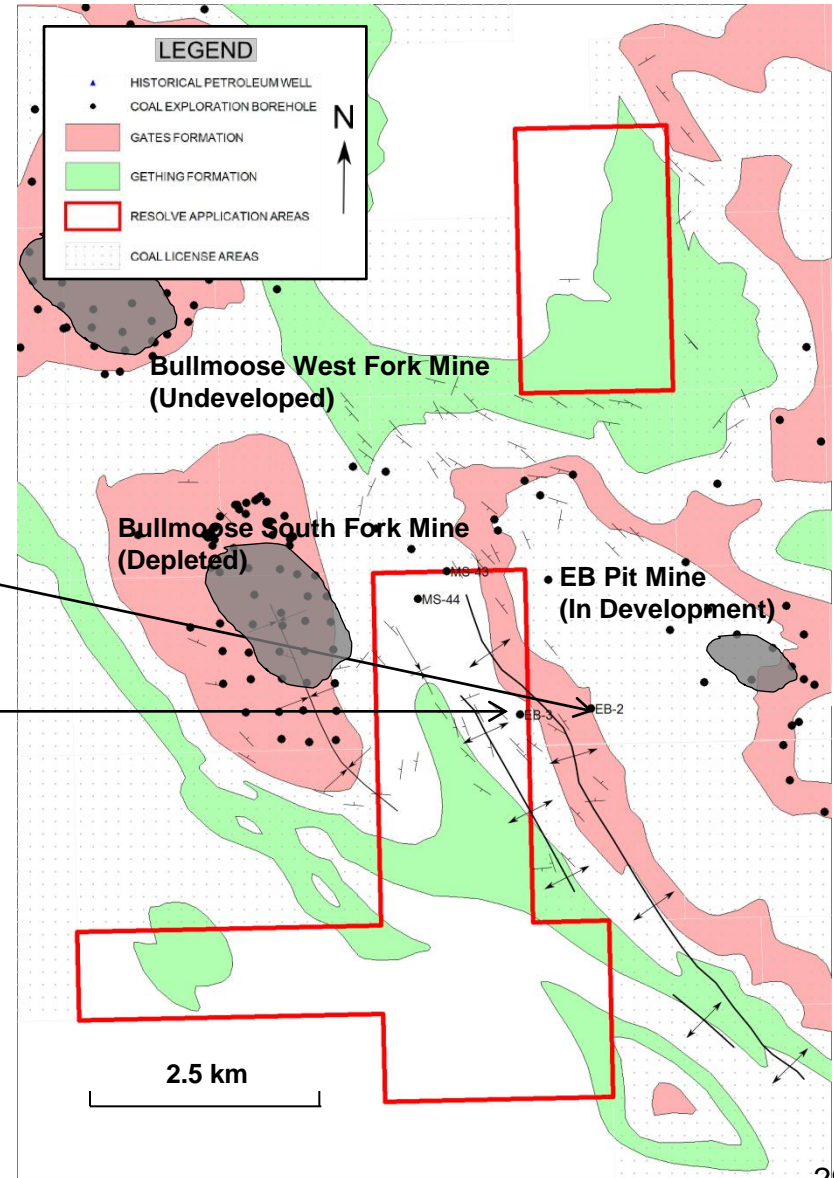
MT SPIEKER COAL ENDOWMENT

INTERSECTIONS & COAL QUALITY

- Medium volatile bituminous
- Low ash contents
- Low sulphur contents
- Excellent yields
- Excellent free swelling indices
- Gething and Gates Formation sub-crop
- Open pit and UG potential
- Proximal rail and power infrastructure
- PRIME COKING COAL

EB-2 Seam B GATES FORMATION	
Thickness (m)	5.03
Raw Ash (dry)	10.92%
Clean Coal Ash (dry)	7.92%
S.G.	1.5
Yield	90.50%
V.M.	25.04%
F.C.	67.04%
MJ/kg	32.9
S	0.25%
P	0.01%
F.S.I.	6.5
H.G.I.	82

EB-3 Lower Bird GETHING FORMATION	
Thickness (m)	2.47
Raw Ash (dry)	3.73%
Clean Coal Ash (dry)	2.12%
S.G.	1.6
Yield	95.70%
V.M.	22.94%
F.C.	74.94%
MJ/kg	34.9
S	0.58%
P	0.03%
F.S.I.	6.5
H.G.I.	94



5. DEVELOPMENT PLANS

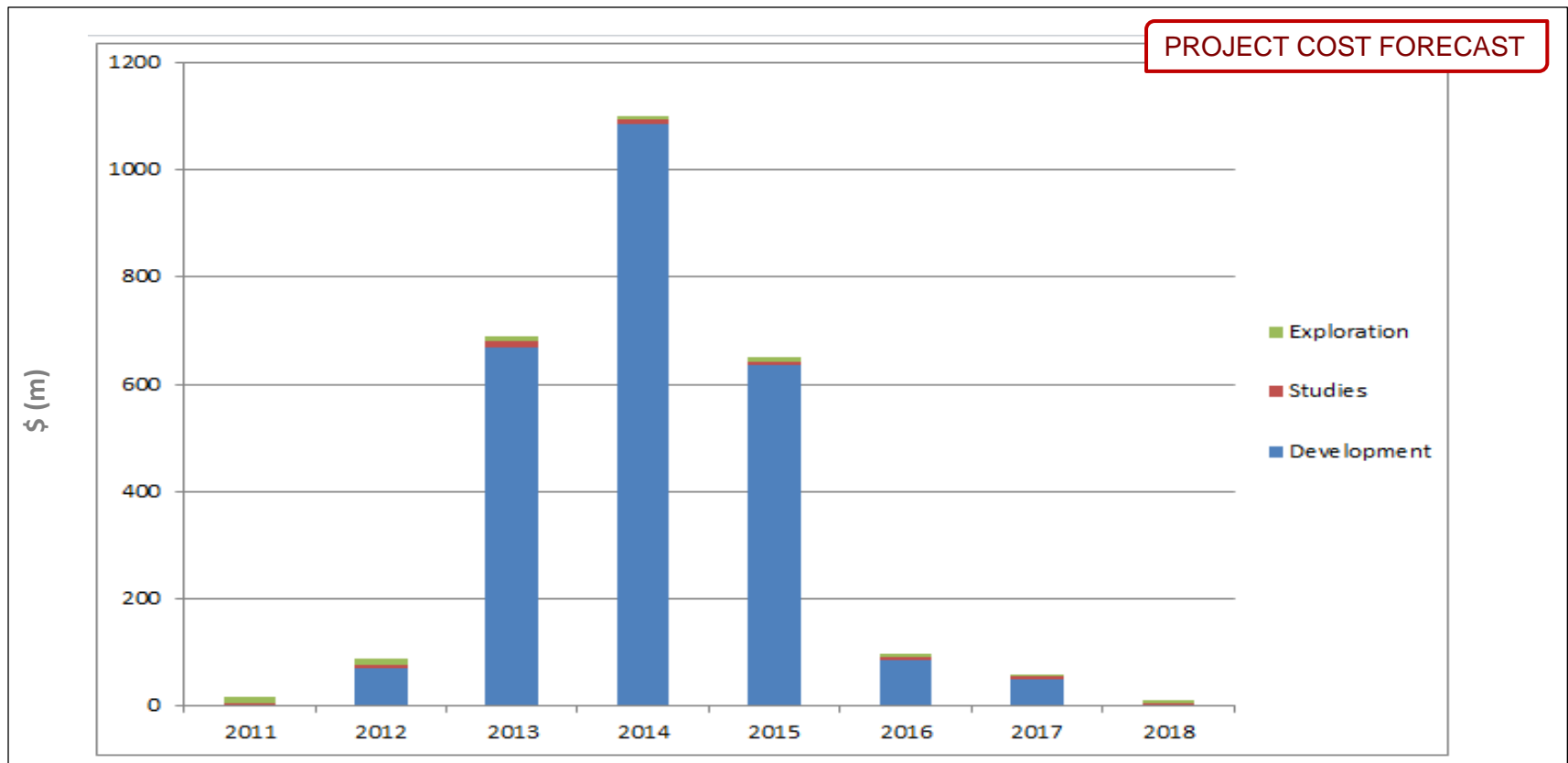


WORKING TO DEVELOP KEY PROJECTS

Positioned for rapid project advancement

Key Project Milestones

- Stakeholder liaison and access
- Resource definition through drilling
- Initiation of an Environmental Impact Study
- Initiation of Concept & Pre-feasibility studies
- Completion of Reserves Estimate
- Completion of Pre-feasibility study
- Completion of Environmental Impact Study
- Initiation of Full Feasibility study
- Application for Mining License
- Completion of Full Feasibility study
- Purchase of required land
- Initiation of infrastructure development
- Mining license award
- Initiation of mine development



PRELIMINARY PRODUCTION FORECAST

Tenement Group	*Capital Required (\$m)	Production Date (Mt)	2015 (Mtpa)	2016 (Mtpa)	2017 (Mtpa)	2018 (Mtpa)	2019 (Mtpa)	2020 (Mtpa)
Australia								
Jeffries Creek (Open-cut)	160	2016		2.2	4.4	4.4	4.4	4.4
Jeffries Creek (UG Bord & Pillar)	685	2017			0.8	2.6	4.2	4.2
Lake Powlathanga	225	2015	0.8	5	5	5	5	5
Trafalgar								
Pigeonhole Creek, Bully Creek, Row Creek		2016		2.5	9	15	15	15
Canada								
Adams & Adams West	185	2016		0.2	0.8	1.2	1.2	1.2
Mt Spieker North & South	151	2015	0.2	0.6	1.2	1.2	1.2	1.2
TOTAL	1406		1.0	10.5	21.2	29.4	31	31

* Concept level estimate for mine development only.

EXPLORATION BUDGET (YEARS 1 & 2)

	BOWEN	BOWEN	EROMANGA	GALILEE	GALILEE	GALILEE	NORTH GALILEE	NORTH GALILEE	BRITISH COLUMBIA	BRITISH COLUMBIA	BRITISH COLUMBIA	Totals
	EPC1954 - Jeffries Creek	EPCA2618 - Gindie	EPC1673 Sherwood Park	EPC1754 - Bully Creek	EPC1663 - Pigeonhole Creek	EPC2050 - Row Creek	EPC1857 - Lake Powlathanga	EPC1969 - Trafalger	Mt Spieker North	Mt Spieker South	Adams	
Exploration Target	\$ 919	\$ 1,219	\$ 510	\$ 641	\$ 425	\$ 538	\$ 471	\$ 198	\$ 4	\$ 119	\$ 271	\$ 5,315
Inferred	\$ 1,749	\$ 3	\$ 38	\$ 2,117	\$ 1,383	\$ 1,610	\$ 1,153	\$ 798	\$ 221	\$ 418	\$ 661	\$ 10,150
Indicated	\$ 1,351	\$ 3	\$ 38	\$ 328	\$ 3	\$ 114	\$ 892	\$ 7	\$ 310	\$ 1,039	\$ 1,942	\$ 6,025
Measured	\$ 2,096	\$ 3	\$ 38	\$ 630	\$ 3	\$ 119	\$ 1,777	\$ 7	\$ 4	\$ 10	\$ 15	\$ 4,699
Total	\$ 6,115	\$ 1,227	\$ 622	\$ 3,716	\$ 1,813	\$ 2,381	\$ 4,294	\$ 1,010	\$ 538	\$ 1,585	\$ 2,889	\$ 26,189

Numbers are shown in thousands (000's)

BOWEN	\$ 7,341
EROMANGA	\$ 622
GALILEE	\$ 7,910
NORTH GALILEE	\$ 5,303
BRITISH COLOMBIA	\$ 5,012
Grand Total	\$ 26,189

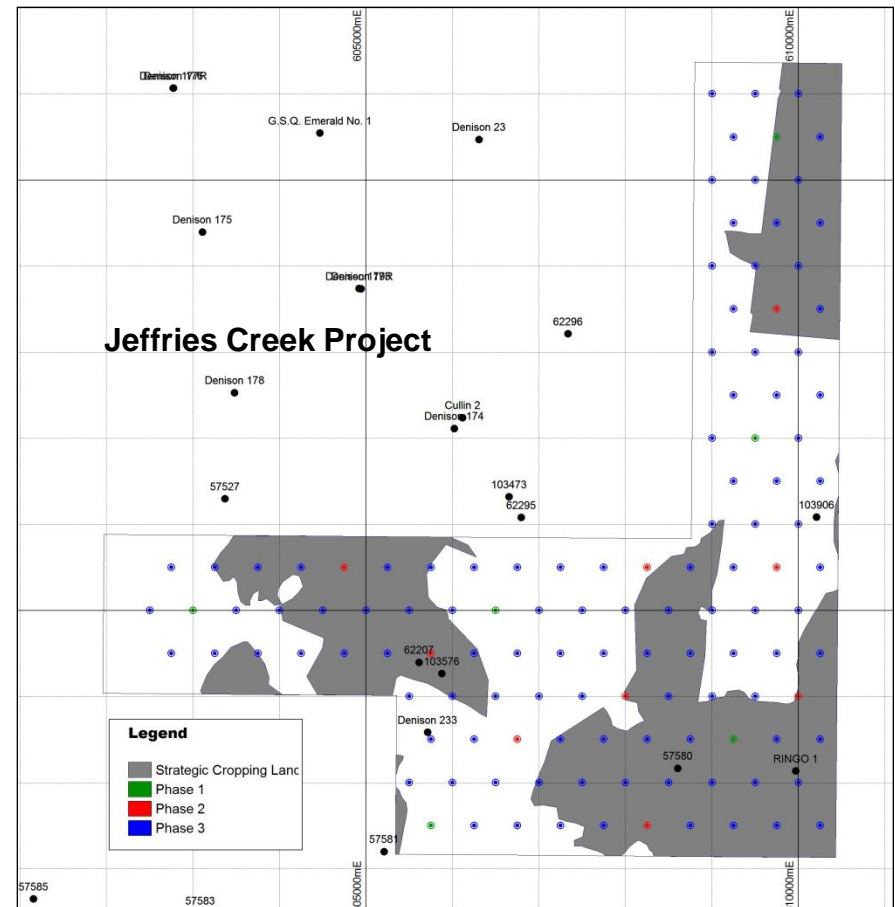
KEY PROJECT DEVELOPMENT – RESOURCE DEFINITION

Cost effective, innovative exploration

Key Resource Milestones

Jefferies Creek Example

- Phase 1: Inferred JORC compliant resource definition (entire lease) (8 holes)
- Phase 2: Indicated JORC compliant resource definition to 150Mt. (6 holes)
- Phase 3: Measured JORC compliant resource definition to 100Mt (6 holes)
- Ensures cost effective use of exploration budget – only drilling the metres needed to move through to a mining decision
- Innovative use of geostatistical techniques to ensure appropriate drill designs are utilised for greater confidence in resource and reserve estimation
- Reserve estimation using a very experienced multi-disciplinary team.

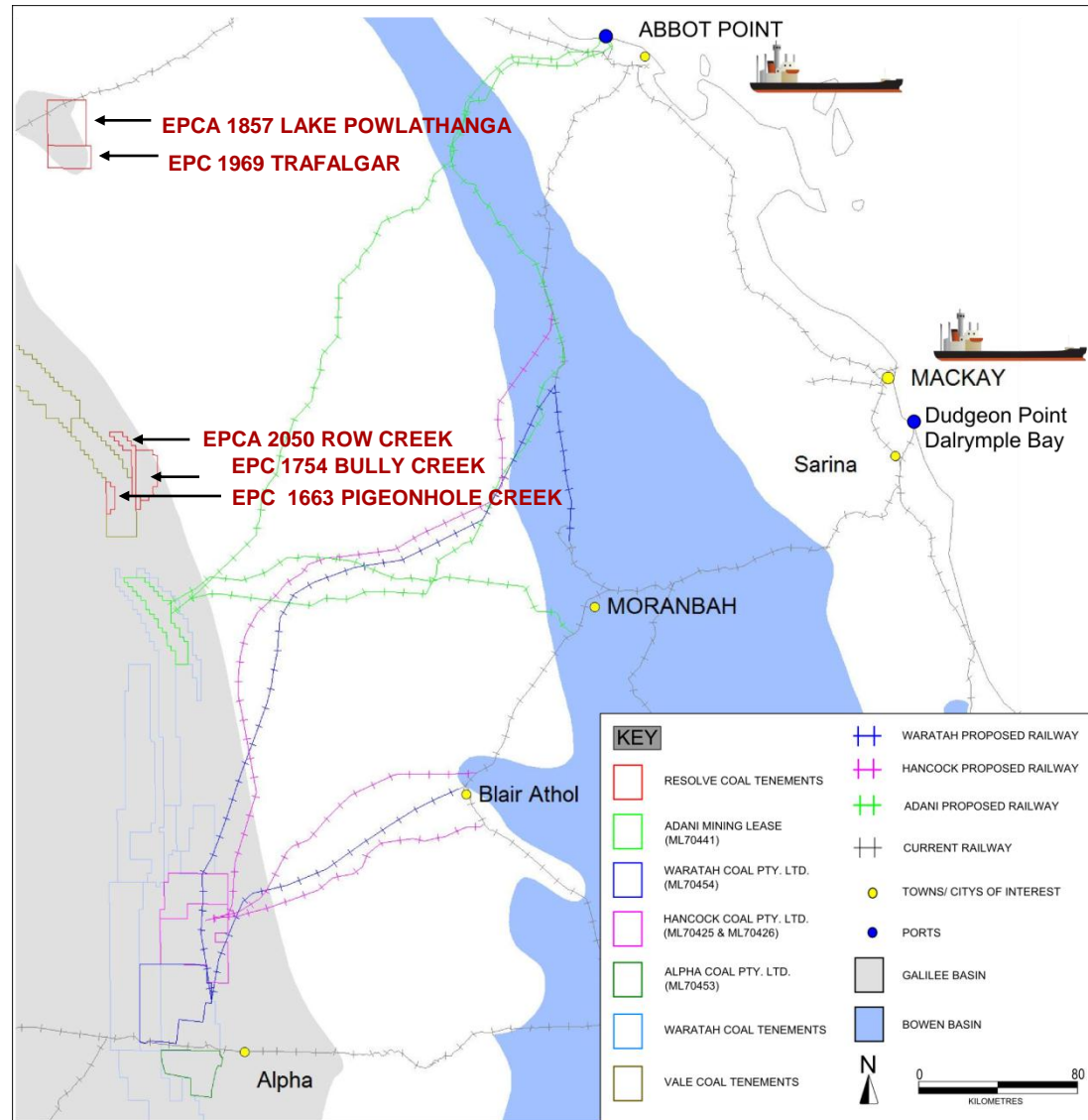


KEY PROJECT DEVELOPMENT – INFRASTRUCTURE

Forward planning to minimise capital costs

Key Infrastructure Milestones

- 5 tenements within 7km of heavy capacity rail lines
- Galilee Basin developments
 - 5Mtpa under discussion through Abbott Point – exp. to 15Mtpa
 - Third party access to rail within 42km of the Bully Ck tenement under discussion
 - Financial commitments required end 2013
 - Access possible end 2015
- Bowen Basin & Galilee Basin developments supported by discussion with Dudgeon Point developer
 - 5Mtpa – exp. to 10Mtpa
 - Financial commitments required end 2013
 - Access possible end 2015



7. KEY RISK SUMMARY



7. KEY RISK SUMMARY

Early Stage Project Assessment

Development Risks - Early stage of economic and technical viability of projects. Resolve Energy must proceed through a number of steps before making investment decisions about its major projects; these include but are not limited to, classifying resources, conducting feasibility studies, upgrading to reserves, obtaining statutory government approvals and mining permits and obtaining adequate financing.

Estimating Resources & Exploration Targets

The estimating of mineral resources is a fundamental but uncertain process. Estimates specifically at the lower confidence level end of the spectrum may not prove to be an accurate indication of the quality and quantity of the coal resource. Resolve Energy does not currently have any compliant Resources under the JORC Code. All of its estimates have been made as an exploration target which reflects limited sampling and a low level of geological certainty.

Coal Quality

Resolve Energy has access to a relatively small data set across most of its prospective tenements. No guarantees can be given to the quality of potential coals within any of its exploration assets.

Operations Risk

Resolve Energy's projects are subject to operational, technical and other risks that may arise through unforeseen events outside of the control of the company. Resolve Energy has no prior operating history and there will be no assurance that it will be able to commission or sustain a series of successful operations. This includes operational difficulties associated with unforeseen events outside the control of the company

Licenses Permits and Land Access

A number of regulatory requirements and statutory approvals will need to be granted prior to development occurring on any tenement. Resolve Energy will also need to enter into land access agreements to undertake its proposed resource exploration and development operations, and gain government approvals, particularly with areas designated Strategic Cropping Land in Queensland (Jeffries Creek & Gindie).

KEY RISK SUMMARY (Cont.)

Coal Market And Demand

There are a number of factors which may effect the coal market all of which are beyond the control of Resolve Energy; these include but are not limited to, global economic activity, supply and demand, competition, transport and infrastructure and government regulation

Funding

Should Resolve Energy proceed to a developmental phase it is likely to require significant capital expenditure. There is no guarantee that such funding, whether debt, equity or otherwise will be secured or obtained.

Infrastructure And Utilities

The commercialisation and production of Resolve's projects will require the development, and access to, significant transport infrastructure, including rail and port access. While Resolve is making every endeavour to lower this risk, there can be no assurance that Resolve will obtain access to facilities on commercially feasible terms.

Environmental Risks and Hazards

Resolve's operations in all jurisdictions are subject to the laws and regulations specific to those areas. Resolve intends to conduct it's activities within strict, fully compliant environmental guidelines, however, there can be no assurance that our operations may not be affected by potential environmental breaches that may impact on our ability to operate, or may cause financial or reputational loss

General Economic Risks

Resolve's ability to obtain funding, it's financial performance and its ability to execute its business strategy will be impacted by general global economic conditions. Factors that may impact on Resolve's business include currency rates, inflation, interest rates and general stock market conditions. Deterioration of any of these factors may have an adverse impact on Resolve's financial position.

A more detailed Statement of Risks will be included in the Prospectus.

8. CONTACTS



9. CONTACTS

Office Address

Resolve Coal Pty Ltd
Level 8, 46 Edward St
Brisbane, QLD
4000

Tel: +61 7 3232 3400
Fax: +61 7 3232 3499
ABN 83151212083
gordonsaul@resolve-geo.com

The estimated in situ coal reported within this statement represents an “Exploration Target” according to the JORC 2004 Code (Clause 18). The potential quality and quantity shown within is conceptual in nature and there has been insufficient work done at present to define a Mineral Resource under the JORC (2004) Code. It is uncertain if further exploration will result in the determination of a Mineral Resource.

*: Competent person statement

The information in this report that relates to Exploration Targets is based on information compiled by Gordon Saul, who is a Member of the Australasian Institute of Geoscientists. Gordon Saul is a full-time employee of Resolve Coal Pty. Ltd. Gordon Saul has sufficient experience, which is relevant to the style of mineralisation and type of deposit under consideration and to the activity, which he is undertaking to qualify as a Competent Person as defined in the 2004 Edition of the ‘Australasian Code for Reporting of Exploration Results, Mineral Resources and Ore Reserves’. Gordon Saul consents to the inclusion in the report of the matters based on his information in the form and context in which they appear.

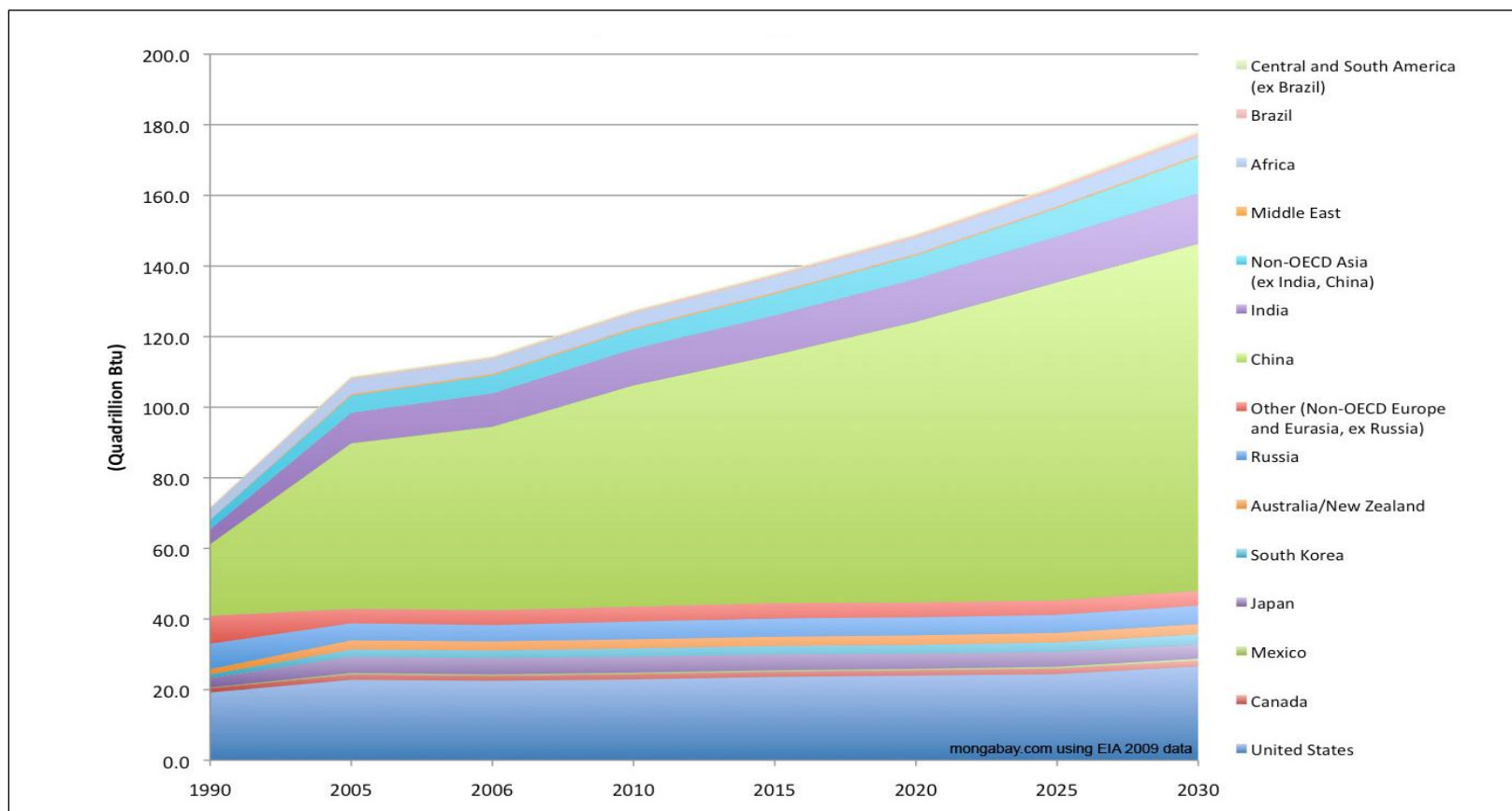


9a. ANNEXURES - GLOBAL COAL MARKETS



COAL – STRONG OPPORTUNITY FOR GROWTH

WORLD COAL CONSUMPTION BY REGION, 1990 - 2003

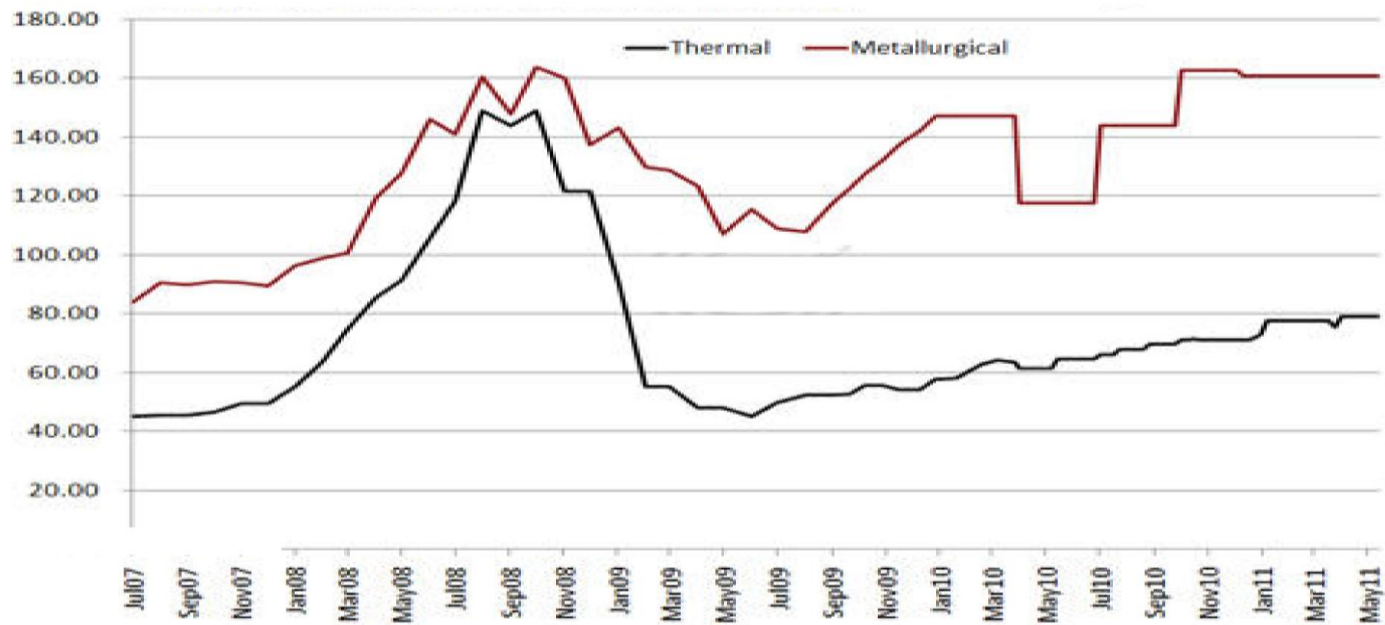


Data Derived from - The U.S. Energy Information Administration (EIA) 2009

COAL – STRONG OPPORTUNITY FOR GROWTH

- Strong prices predicted past 2015
- Provides security of investment to coal developers

	FY10	FY11	FY12	FY13	FY14	FY15
Hard coking	147	238	255	226	204	189
Semi-hard coking	134	215	226	190	167	150
Semi-soft coking	104	175	187	154	136	118
LV PCI	110	181	191	158	139	122
Thermal	77	115	107	95	93	91



9b. ANNEXURES – QUEENSLAND COAL SUMMARY



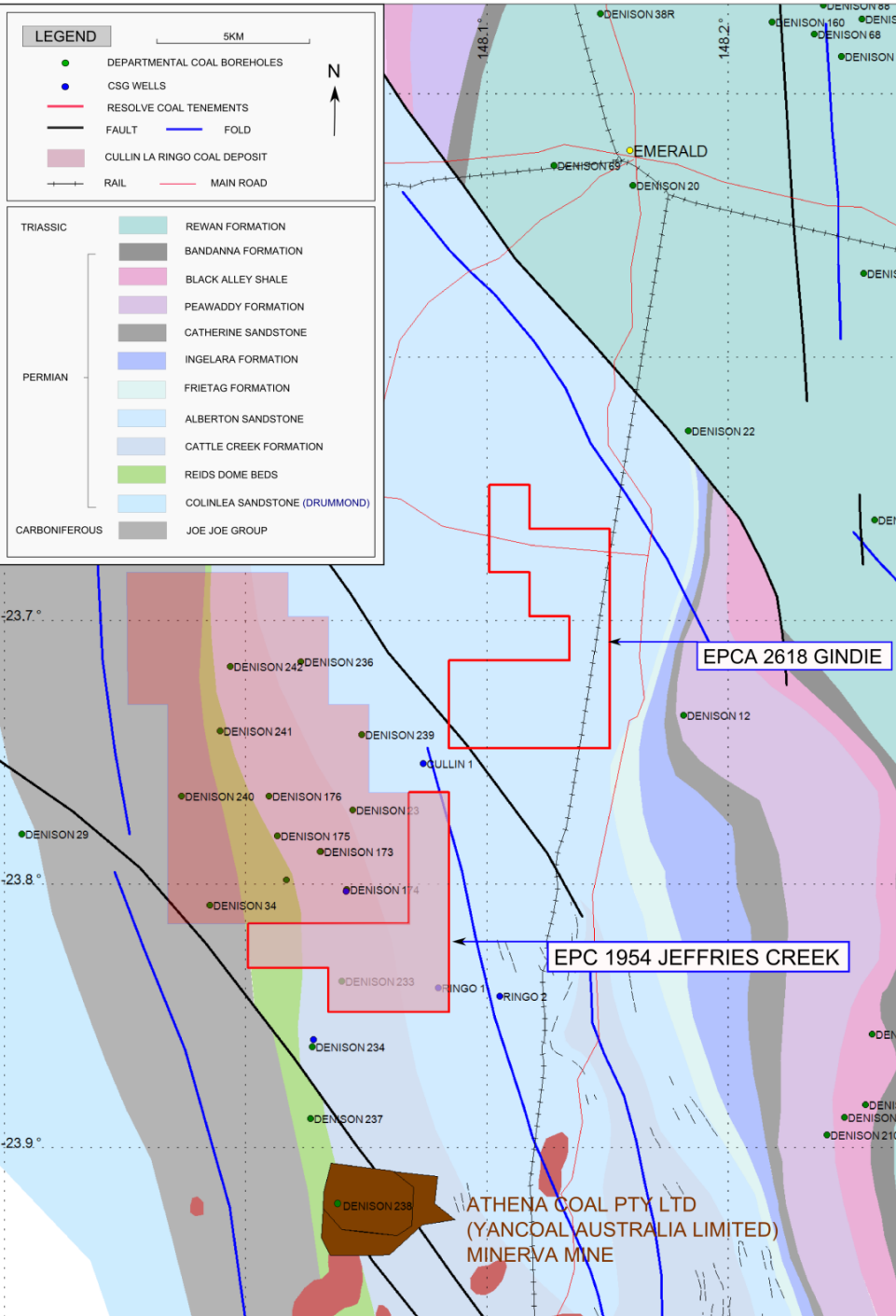
QUEENSLAND COAL TENEMENTS

Tenement No:	Title	Basin	Coal Type	Size (Km ²)	Resolve Coal Holding	Date Applied/ <i>Granted</i>	Tenure Length
EPC 1954	Jeffries Creek	Bowen	Thermal/PCI /Coking?	34.56	100%	<i>04/2/2011</i>	5 yrs
EPCA 1857	Lake Powlathanga	Galilee	Thermal	290.00	100%	23/07/2009	5 yrs
EPC 1969	Trafalgar	Galilee	Thermal	161.00	100%	<i>21/04/2011</i>	5 yrs
EPC 1663	Pigeonhole Creek	Galilee	Thermal	38.31	100%	<i>26/11/2010</i>	5 yrs
EPC 1754	Bully Creek	Galilee	Thermal	156.50	100%	<i>29/10/2010</i>	5 yrs
EPCA 2050	Row Creek	Galilee	Thermal	79.89	100%	02/02/2010	5 yrs
EPC 1673	Sherwood Park	Eromanga	Thermal	903.20	100%	<i>29/10/2010</i>	5 yrs
EPCA 2618	Gindie	Bowen	Thermal/PCI /Coking?	47.17	100%	<i>21/06/2011</i>	5 yrs

Resolve Energy currently holds 1,533.13 km² of prospective coal tenements in Queensland

9c. ANNEXURES – BOWEN BASIN ASSETS

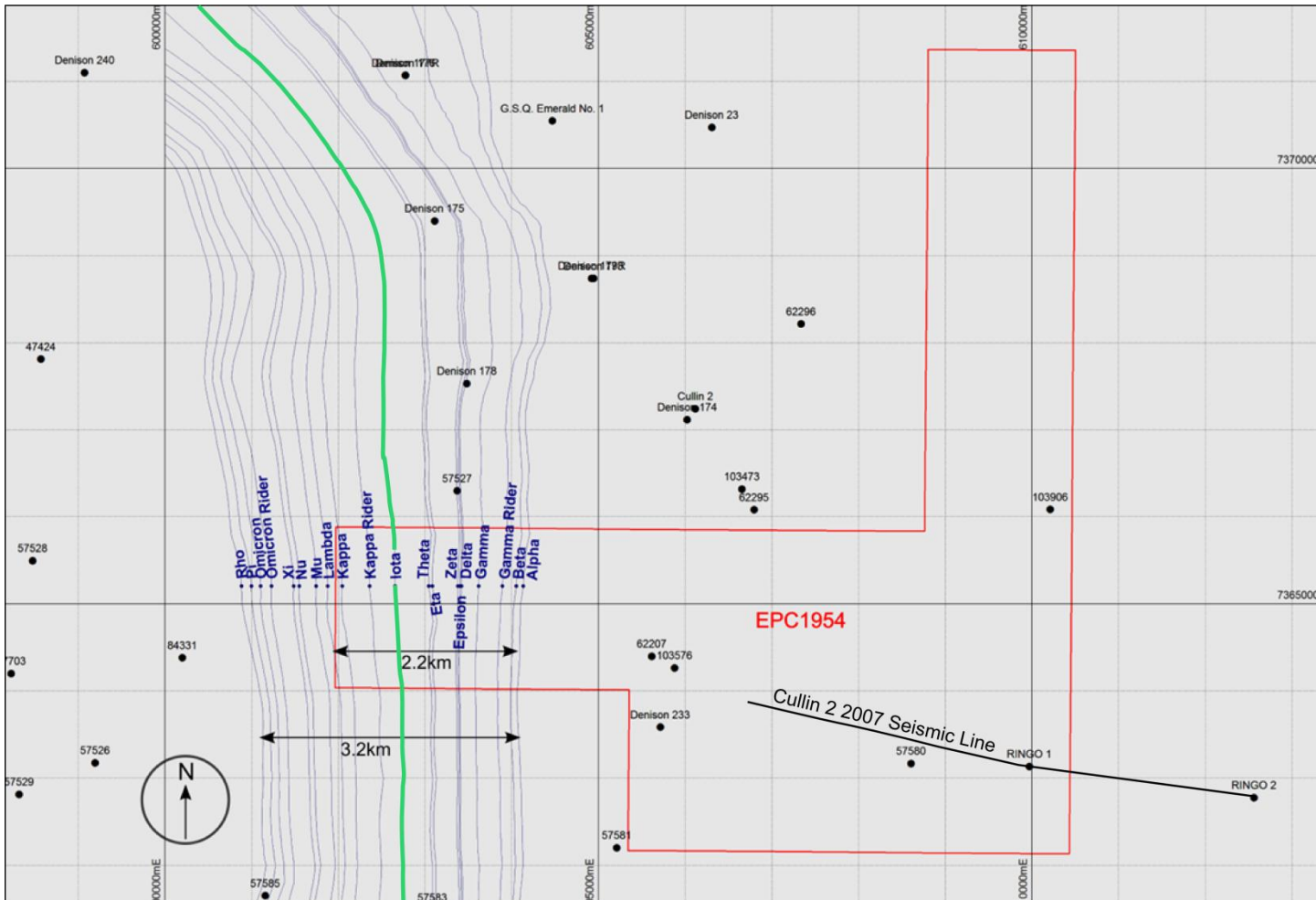




EPC 1954 - JEFFRIES CREEK
EPCA 2618 - GINDIE
GEOLOGY MAP
CULLIN LA RINGO DEPOSIT

EPC 1954 JEFFRIES CREEK - CULLIN LA RINGO COAL SEAMS

Open Cut and Underground Reids Dome Beds prospect. Increasing rank from west to east provides increasing opportunity for higher percentages of soft /semi soft coke or high vol PCI.



Seam	Coal thickness Average (m)
Alpha	0.3
Beta	0.4
Gamma Rider	0.4
Gamma	1.4
Delta	1.7
Epsilon	0.3
Zeta	0.6
Eta	1.7
Theta	1.7
Iota	7.2
Kappa Rider	0.3
Kappa	1.9
Lambda Rider	0.2
Lambda	1.0
Mu	1.3
Nu	1.8
Xi	0.8
Omicron Rider	1.1
Omicron	4.6
Pi	2.2
Rho	0.3

JEFFRIES CREEK– COAL QUALITY

- CULLIN LA RINGO DEPOSIT

Seam	Number of samples	Average Thickness (M)	Yield (F1.6 cumulative)	Proximate Analysis				Sulphur (%)	Phos (%)	Specific Energy Mj/Kg
				Moisture (%)	Ash (%)	Volatile Matter (%)	Fixed Carbon (%)			
Delta	2	1.73	98.7	4.7	5.5	31.0	58.7	0.34	0.09	29.7
Gamma	2	1.44	89.8	3.3	6.1	34.4	56.3	0.40	0.04	30.5
Iota	19	7.24	88.0	4.0	6.8	32.6	56.6	0.32	0.08	29.9
Kappa	1	1.94	80.9	4.2	8.8	32.0	55.0	0.25	0.22	29.5
Mu	6	1.33	92.9	3.2	6.5	34.3	56.0	0.33	0.07	29.7
omicron	7	4.56	85.0	3.0	8.2	30.1	58.7	0.24	0.07	30.1
omicron rider	1	1.12	85.5	4.1	6.9	31.1	57.9	0.31	0.01	30.0
Pi	5	2.17	70.0	3.0	14.6	27.0	55.4	0.26	0.06	27.6
Theta	1	1.67	85.8	4.5	9.7	30.0	55.8	0.27	0.06	28.5
Eta	1	1.66	96.1	3.1	5.9	33.3	57.7	0.44	0.14	30.8
weighted average			86.7	3.7	7.9	31.5	56.9	0.31	0.08	29.7

- The coals are characterized by reactive macerals between 66 – 75%.
- Ash fusion temperatures range between 1300°C and <1600°C
- Vitrinite reflectance percentage up to 0.91%, with indications of an increase to the east within the deposit.
- Exploration target up to 1440Mt in Jeffries Creek
- Good opportunity for an underground prospect in Gindie with increased rank!

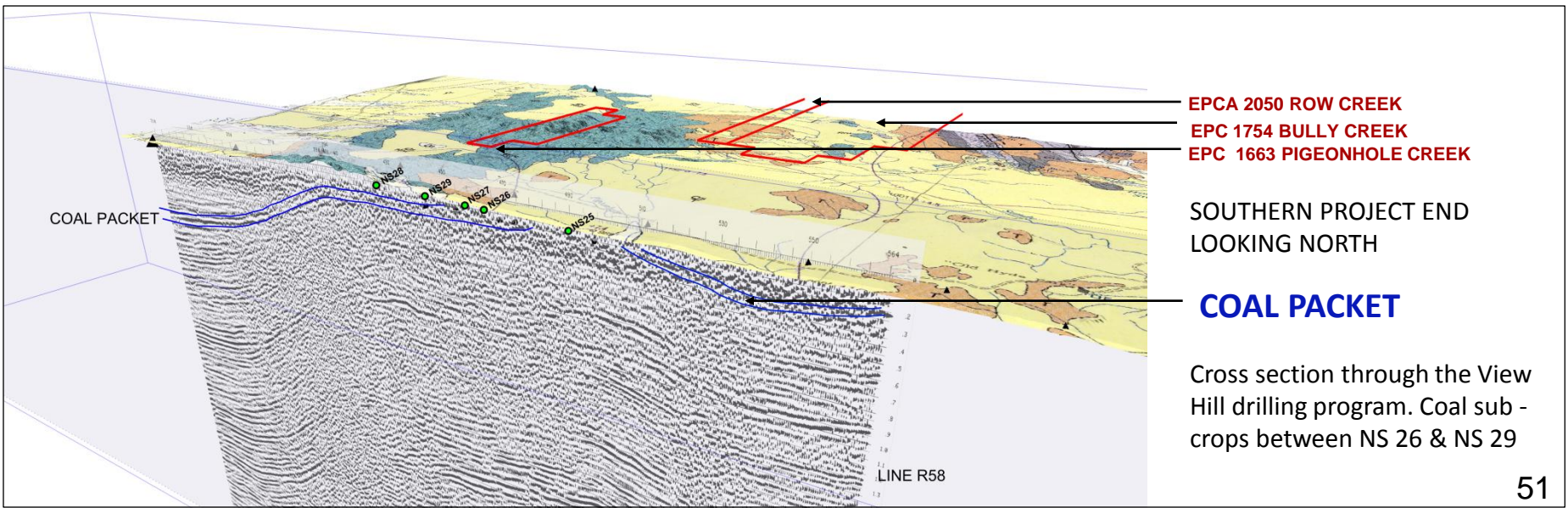
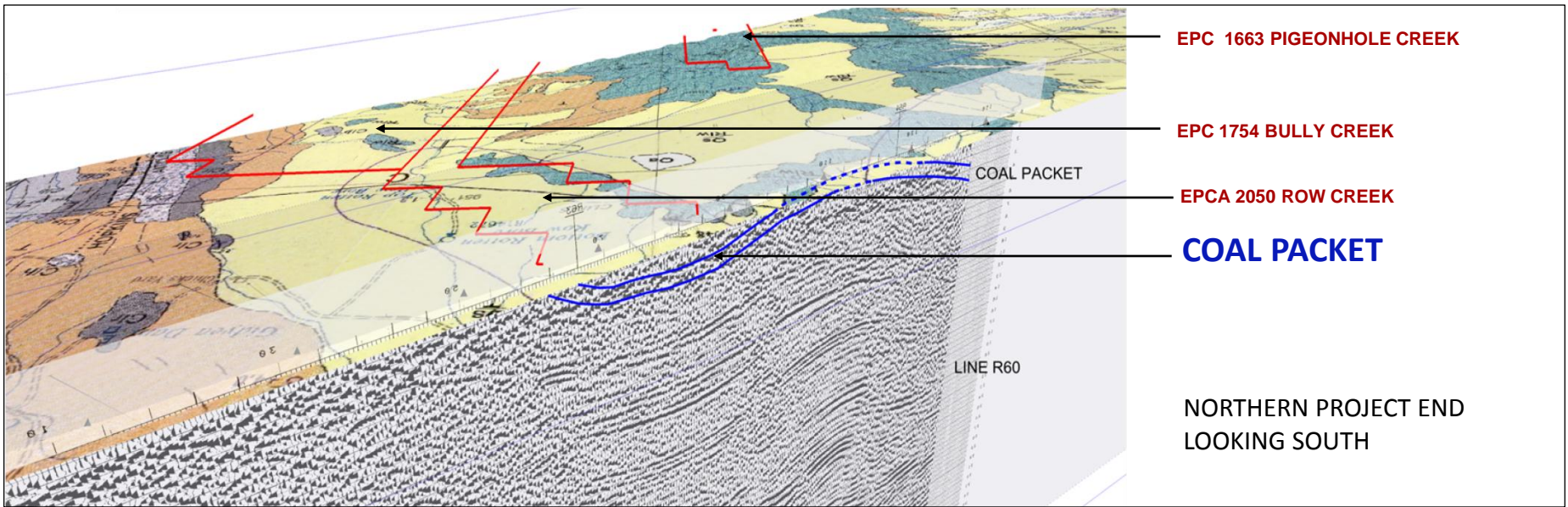
9d. ANNEXURES – GALILEE BASIN ASSETS



GALILEE TENEMENTS

SEISMIC CROSS SECTIONS

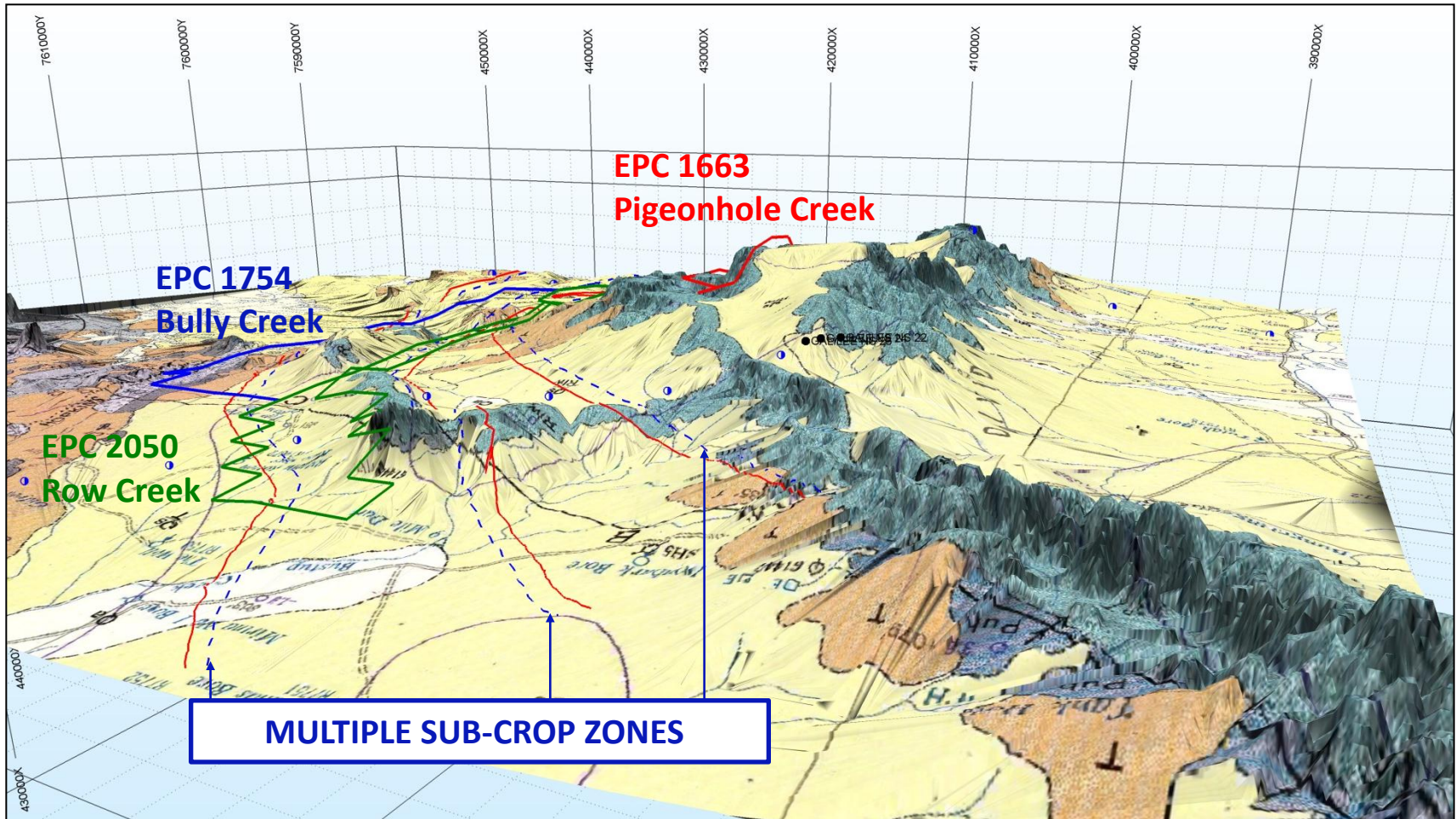
Fold structures identified from seismic data, supported by geology mapping indicates Bully Creek and Row Creek could yield **multiple sub-crops of target seams**.



GALILEE TENEMENTS – TOPOGRAPHY

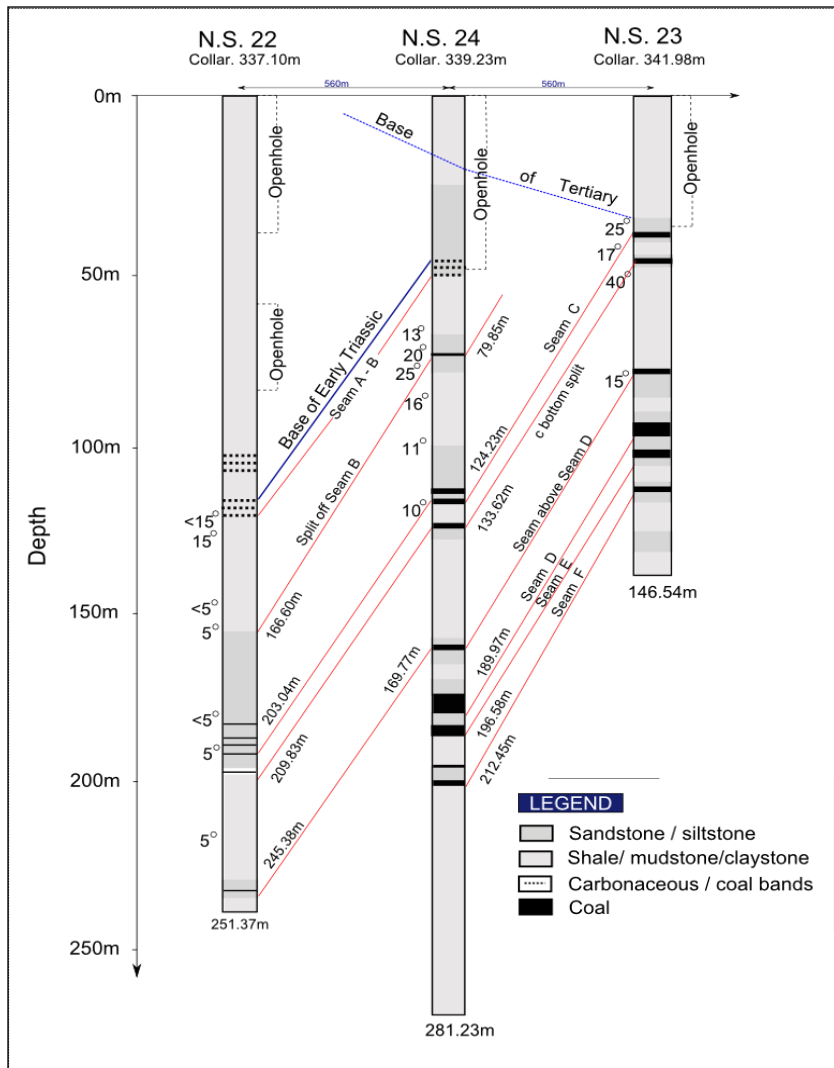
Vertical exaggeration x25

A synclinal structure on the eastern edge of the Galilee basin within this region supports multiple sub-crop zones. Evidence of this can be seen in the distribution of the Warang Sandstone (topographic highs).

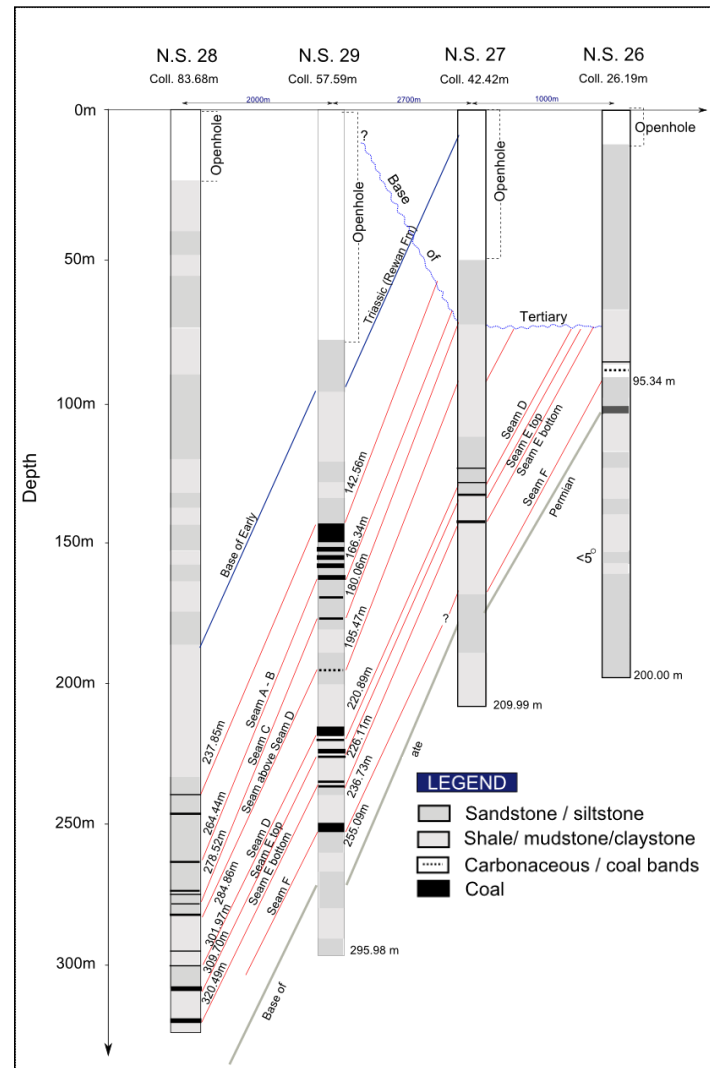


CORRELATION OF SEAMS

MIRTNA (north of EPC's 1663, 1754, EPCA 2050)



VIEW HILL (south of EPC's 1663, 1754, EPCA 2050)



COAL QUALITY – ADJACENT TO EPC 1663,1754 & EPCA 2050

Samples washed at Specific Gravity 1.9gm/cc, analysis performed on float fractions (adb).

Area	Seam	1.90gm/cc Wt% Float	Av Thick (m)	SG gm/cc	M%	Ash%	VM%	FC%	S%	Specific Energy Mj/Kg
View Hill	ABC Seams	84.5	18.2	1.6	9.7	21.5	26.9	42.0	0.2	20.9
	D Seam	95.8	4.1	1.5	10.5	12.6	29.2	47.7	0.2	23.9
	E Seam Top	97.9	1.7	1.4	12.8	7.2	30.6	49.4	0.3	24.8
	E Seam Bottom	95.4	1.3	1.5	10.6	12.3	29.6	47.6	0.3	23.7
	F Seam	89.5	4.1	1.6	9.4	16.2	25.1	49.3	0.2	21.1
	View Hill Average	88.1	29.4	1.5	10.0	18.3	27.3	44.5	0.2	21.7
Mirtna	C Seam	82.7	2.8	1.5	9.6	19.0	29.4	42.1	0.3	21.8
	C Seam Bottom	83.6	1.7	1.5	8.8	21.5	26.4	43.2	0.3	20.9
	D Seam	92.8	6.3	1.4	9.4	9.8	28.5	52.3	0.2	21.0
	E Seam	94.6	3.7	1.4	10.2	9.0	28.5	52.3	0.2	24.6
	F Seam	80.4	3.3	1.5	9.6	14.2	25.2	41.4	0.2	22.7
	Mirtna Average	88.4	17.8	1.5	9.6	13.0	27.8	47.8	0.2	22.2

Quality results are reported by, A.F.Carr, 1974, Galilee Exploration Coal Drilling, Mirtna & View Hill, Queensland Geological Survey.

9e. ANNEXURES – CANADIAN ASSETS



CANADIAN COAL PORTFOLIO OVERVIEW

- Resolve Energy has applied for four coal licenses in the Peace River Coalfield, British Columbia targeting coking coal.
- Coal boreholes with coal quality data from within the Mt Spieker South application area show coal with excellent coking properties.
- Coal boreholes in the immediate vicinity of Adams, Adams West, and Mt Spieker North with coal quality data show numerous seams with coking properties.
- All tenements relatively proximal to existing road and rail infrastructure, with available port capacity.

Canadian Tenement Details

Title	Region	Locality	Mining Method	Coal Type	Size (km ²)	Resolve Coal Holding	Date Applied	Tenure Length
Mt Spieker North	NE British Columbia	Peace River	UG/OC	Coking	4.42	100%	20/06/2011	Indefinite
Mt Spieker South	NE British Columbia	Peace River	UG/OC	Coking	13.27	100%	20/06/2011	Indefinite
Adams	NE British Columbia	Peace River	UG/OC	Coking	14.41	100%	20/06/2011	Indefinite
Adams West	NE British Columbia	Peace River	UG/OC	Coking	2.88	100%	20/06/2011	Indefinite