



23 March 2011

The Manager Companies  
ASX Limited  
20 Bridge Street  
Sydney NSW 2000

(30 pages by email)

Dear Madam

### **PRESENTATION TO INVESTORS**

I attach a presentation of information on the Company's activities which has been delivered at Mines and Money Hong Kong 2011.

#### **Further results from scout drilling program at Sontang project**

As set out in the attached presentation the scout drilling program at Sontang has now been completed. Some results, not yet released to the market, are included in the presentation. A full report on the program will be included in the March 2011 quarterly report.

#### **Clarification of production target at Tembang project**

The ASX announcement of 24 February 2011 regarding the Company's timetable for its Tembang project stated that a production rate of between 70,000 and 80,000 ounces gold equivalent per annum over more than 10 years is targeted.

The targeted production is between approximately 60,000 ounces of gold and 600,000 ounces of silver (70,000 ounces gold equivalent) and 70,000 ounces of gold and 700,000 ounces silver (80,000 ounces gold equivalent).

For further information please contact:

Jocelyn Waller  
Managing Director  
Sumatra Copper & Gold plc  
+44 7843 054287

Richard Edwards  
Company Secretary  
Sumatra Copper & Gold plc  
+61 2 9300 3300

Melanie Gray Stokes  
Investor Relations  
FD  
+61 8 9386 1233

Yours sincerely

A handwritten signature in blue ink, appearing to read "W. Morris".

Warwick G. Morris  
Chairman

pjn5903



# Mines & Money Presentation

22 March 2011

Hong Kong



# Disclaimer



This document is prepared as a presenter's aid and support. It is not a stand alone document. Best efforts have been taken to ensure the accuracy of information contained at the time of presentation. In some instances forward targets and/or assumptions have been included. All such instances are indicative only and subject to alteration and/or cancellation as and when the management of Sumatra Copper & Gold plc sees fit. All information contained herein is general in nature.

Potential investors are cautioned against using the content of this presentation in isolation for making investment decisions.

Research and the counsel of a qualified financial adviser or accountant are strongly recommended to anyone considering investing in listed company securities, including Sumatra Copper & Gold plc.

The information in this presentation that relates to Exploration Results, Mineral Resources or Ore Reserves is based on information compiled by Matthew Farmer, geologist, who is a Member of the Australasian Institute of Mining and Metallurgy. Mr. Farmer is an employee of the Company who has sufficient experience which is relevant to the styles of mineralization and types of deposit under consideration and to the activity which he is undertaking to qualify as a Competent Person as defined in the 2004 edition of the "Australasian Code for Reporting of Exploration Results, Mineral Resources and Ore Reserves". Mr. Farmer has consented to the inclusion in this document of the matters based on his information in the form and context in which they appear.

# Highlights



## Emerging Gold Producer in Sumatra, Indonesia

- Tembang gold and silver project on track for production in 2013
- Feasibility Study processes in motion
- Brownfield site with exploration upside



## Partnership with Newcrest Mining

- Earn-in JV on Tandai project
- Newcrest spend of \$12 million to earn 70% interest
- Option to acquire 25% interest in Tembang



## Significant Land Holdings

- 100% ownership of 7 mining business permits (IUPs) in Sumatra
- Total area controlled - 3,219 km<sup>2</sup>
- Ongoing exploration across a broad portfolio



# Corporate Overview



## Corporate (as of 16.03.11)

Code	SUM
Shares Issued*	159,914,181
52 Week High/Low	A\$0.40 - 0.16
Market Cap	~\$45M
Average daily volume	~400,000

\*Chess Depositary Interests 1:1

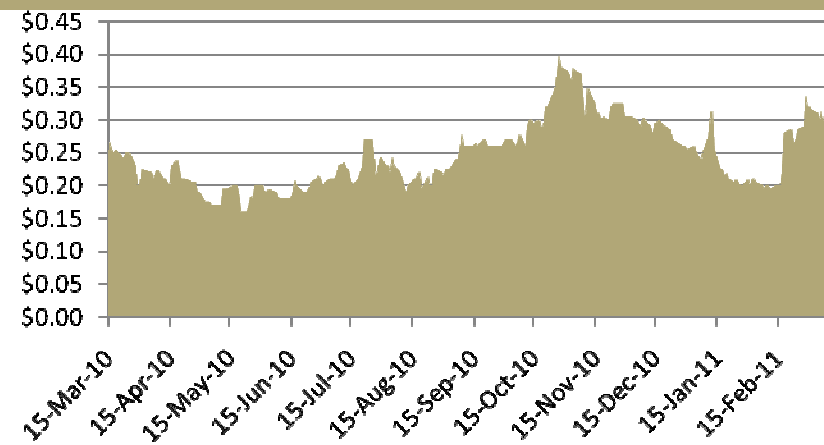
## Top shareholders

SUM Management	14.1%
Macquarie Bank	8.0%
Newcrest	7.0%

## Board

Warwick Morris	Non-Exec Chairman
Jocelyn Waller	Managing Director
Lord Daresbury	Non-Exec Director
Michael Price	Non-Exec Director
Peter Nightingale	Non-Exec Director

## 12 months share price



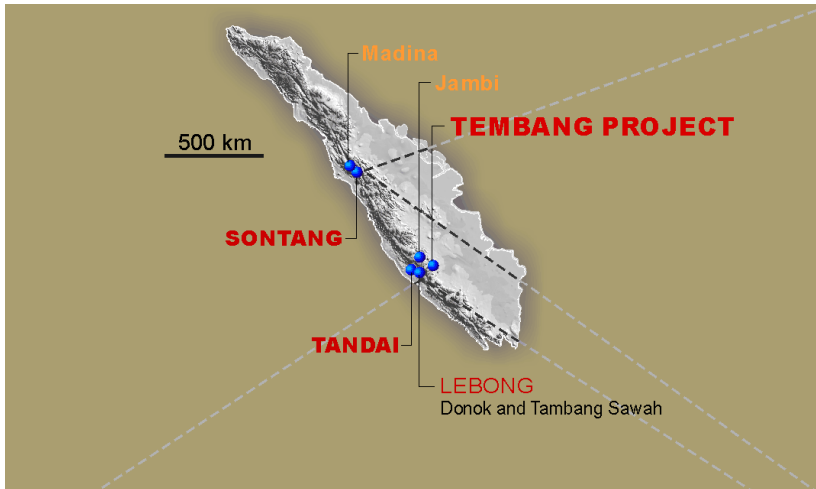
# Peer Group Comparison

Indonesian Operators (18 Mar 2011)

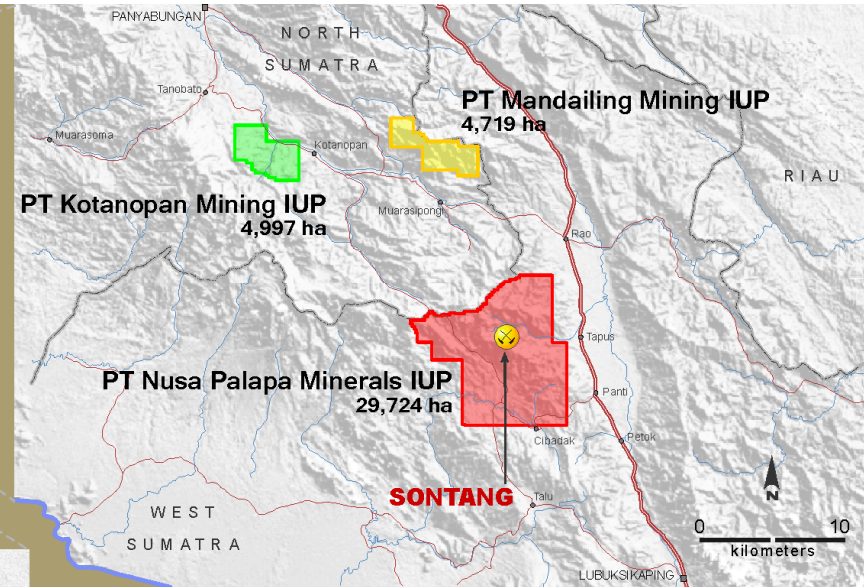
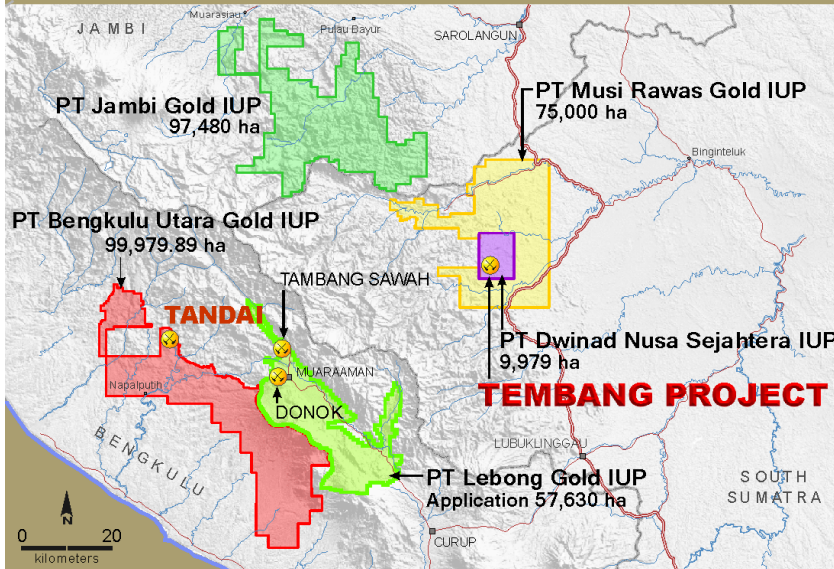


Company	Main Projects/Assets	Listing	Price	12 mo range	Capitalization A\$M
Intrepid	Tujuh Bukit (80%)	ASX	1.90	0.31-2.20	988.6
G Resources	Martabe (95%)	HK	0.50	0.35-0.64	914.3
Archipelago	Toka Tindung (85%)	AIM	0.605	0.32-0.65	555.2
East Asia Minerals	Miwah (85%)	TSX	5.50	4.80-8.73	429.3
Kingsrose	Way Linggo (85%)	ASX	1.55	0.65-1.55	397.4
Robust	Romang (51%)	ASX	1.84	1.25-2.35	156.3
Sihayo Gold	Sihayo (75%)	ASX	0.215	0.06-0.27	132.3
Southern Arc	W Lombok (90%)	TSX	1.60	0.51-2.0	127.8
Finders	Wetar (94%) Ojolali (72%)	ASX	0.41	0.25-0.51	114.3
<b>Sumatra</b>	<b>Tembang (100%) Tandai Sontang</b>	<b>ASX</b>	<b>0.28</b>	<b>0.16-0.40</b>	<b>44.8</b>
Centurion	Banda Rayon/Halimon (80%)	TSX	1.08	0.65-1.95	33.8

# Location of IUPs and Projects



Southern Tenements



Northern Tenements

INDONESIA Archipelago





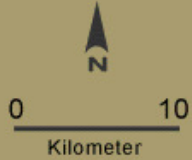
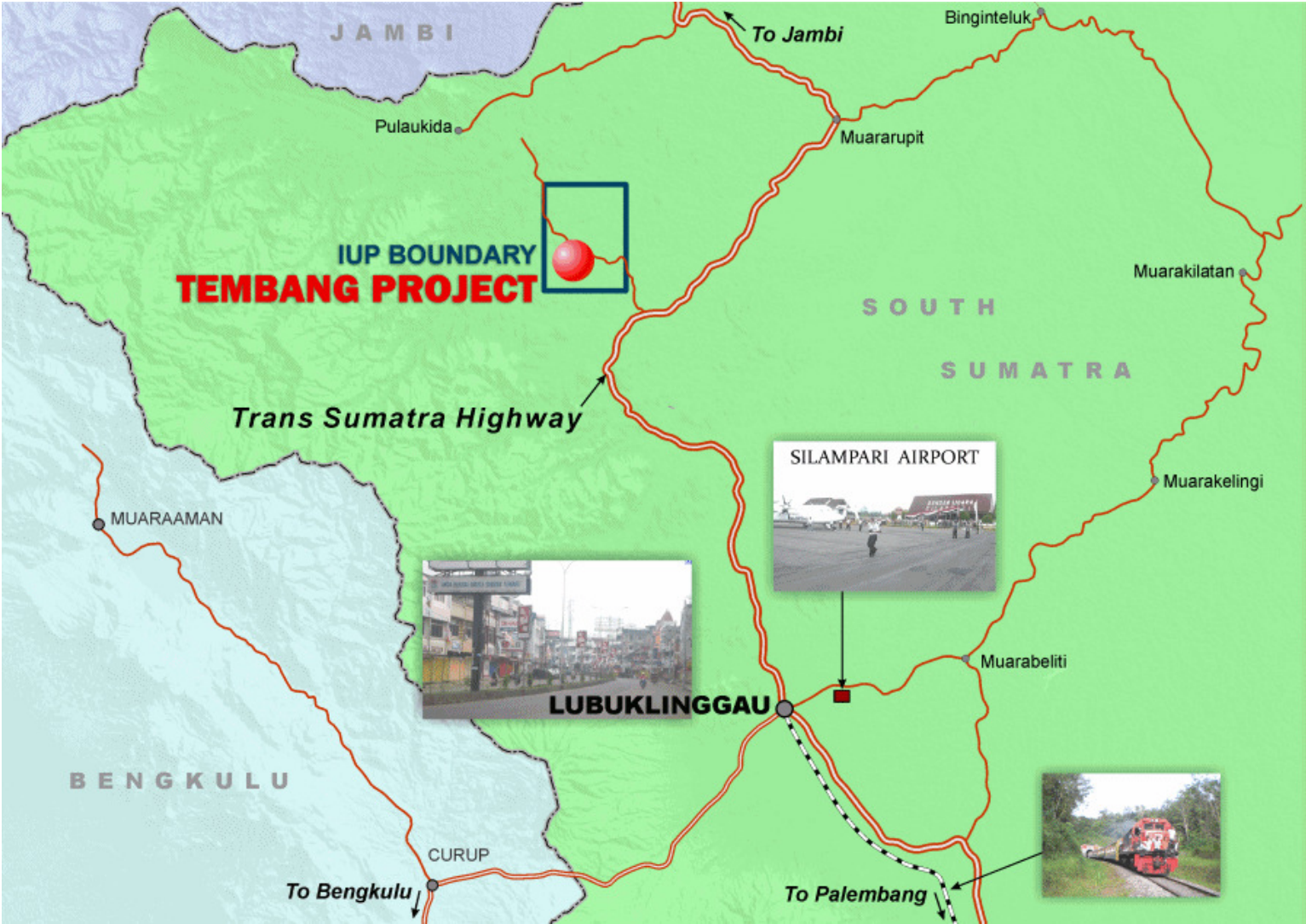
# TEMBANG PROJECT

Near production gold and silver project





# Tembang Location



# Tembang Project Summary



## Production Timetable

- Production targeted for 2013
- Finalising pre-feasibility studies; DFS to commence 2<sup>nd</sup> half 2011

## Gold and Silver Resource

- 60-70,000 oz annual gold production @ net cash cost c.\$500/oz targeted
- 10 year mine life
- Updated JORC resource imminent
- Deposits open at depth

## Development

- Combination of open pit and underground mining likely
- Belinau deposit similarities with Way Linggo

## Infrastructure

- Brownfield site; mine in production from 1997 -2000

# Tembang Mine Development Timeline

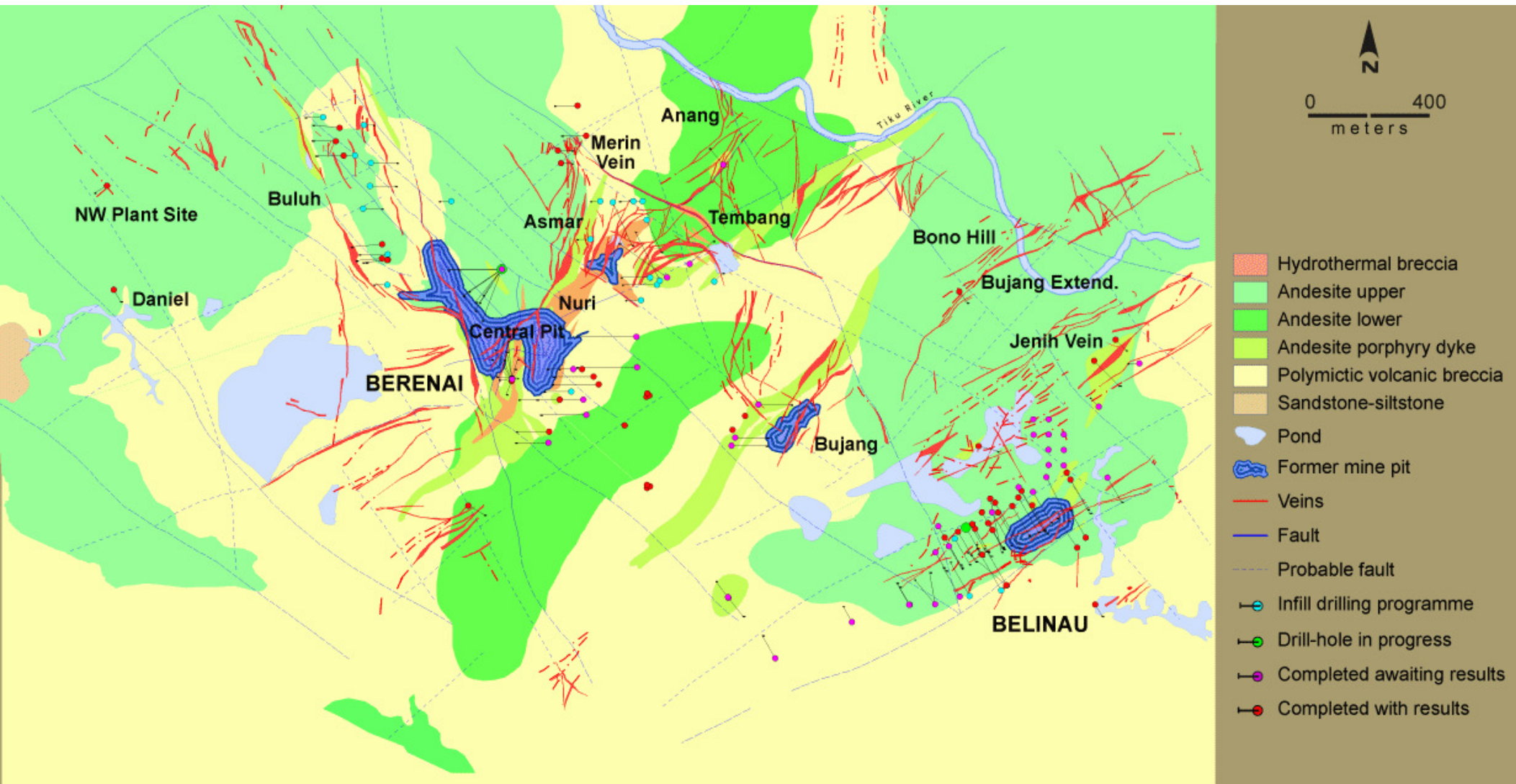


	Q1 2011	Q2 2011	Q3 2011	Q4 2011	Q1 2012	Q2 2012	Q3 2012	Q4 2012	Q1 2013	Q2 2013	Q3 2013	Q4 2013
Pre Feasibility	█	█	█	█								
Mining Feasibility Studies		█	█	█								
Process Plant FS		█	█	█								
Tailing Dam/Waste Dump	█	█	█	█								
Amdal (Local)		█	█	█								
Government approvals				█	█							
Exploration (IUP retention)				█	█							
Land settlement				█	█	█	█					
Raising finance				█	█							
Construction						█	█	█	█			
Production										█	█	█

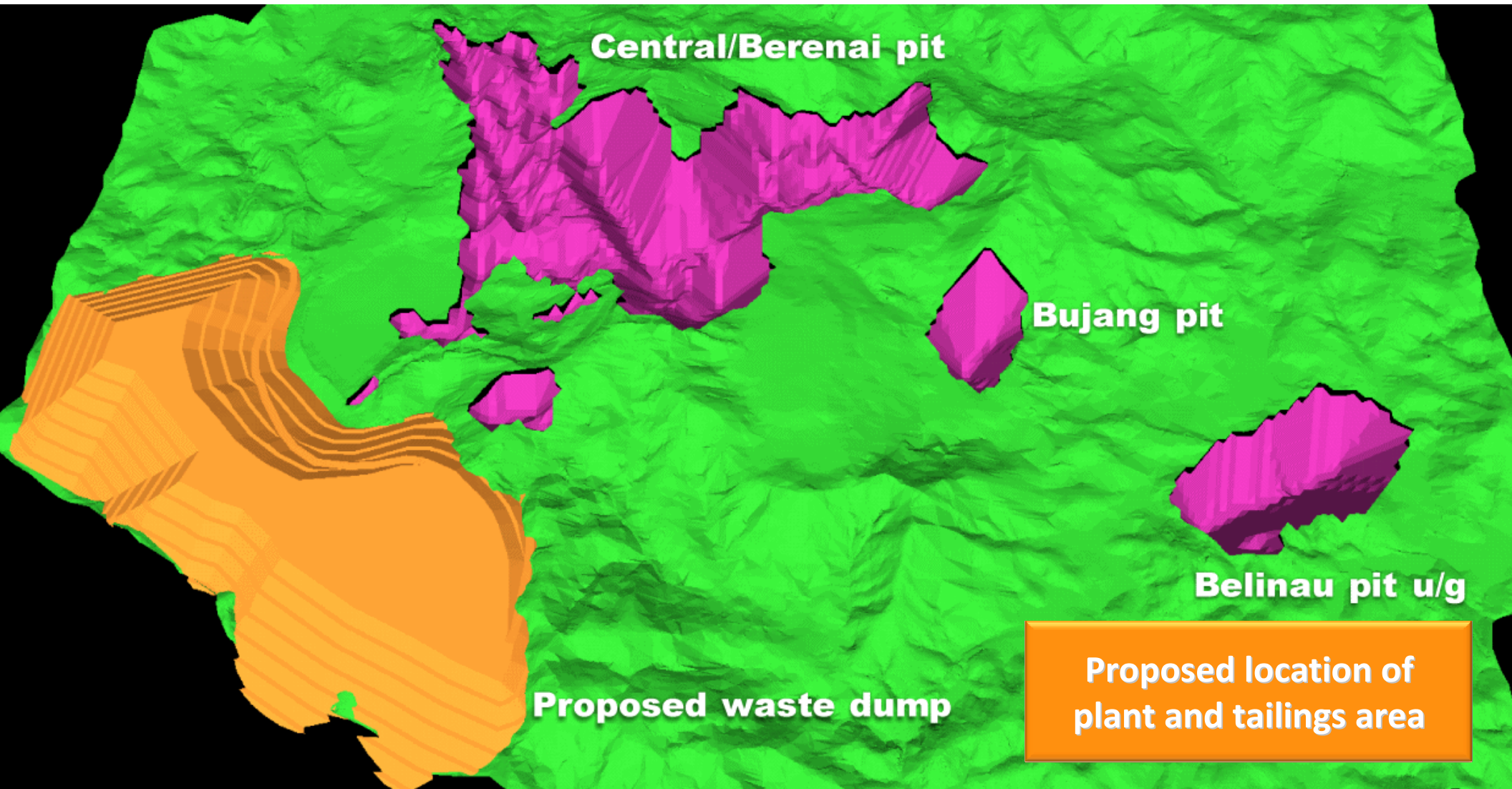
# Aerial View of Tembang Project Area



# Tembang Geology & Drilling Locations



# Planned Layout of Tembang mine



**Central/Berenai pit**

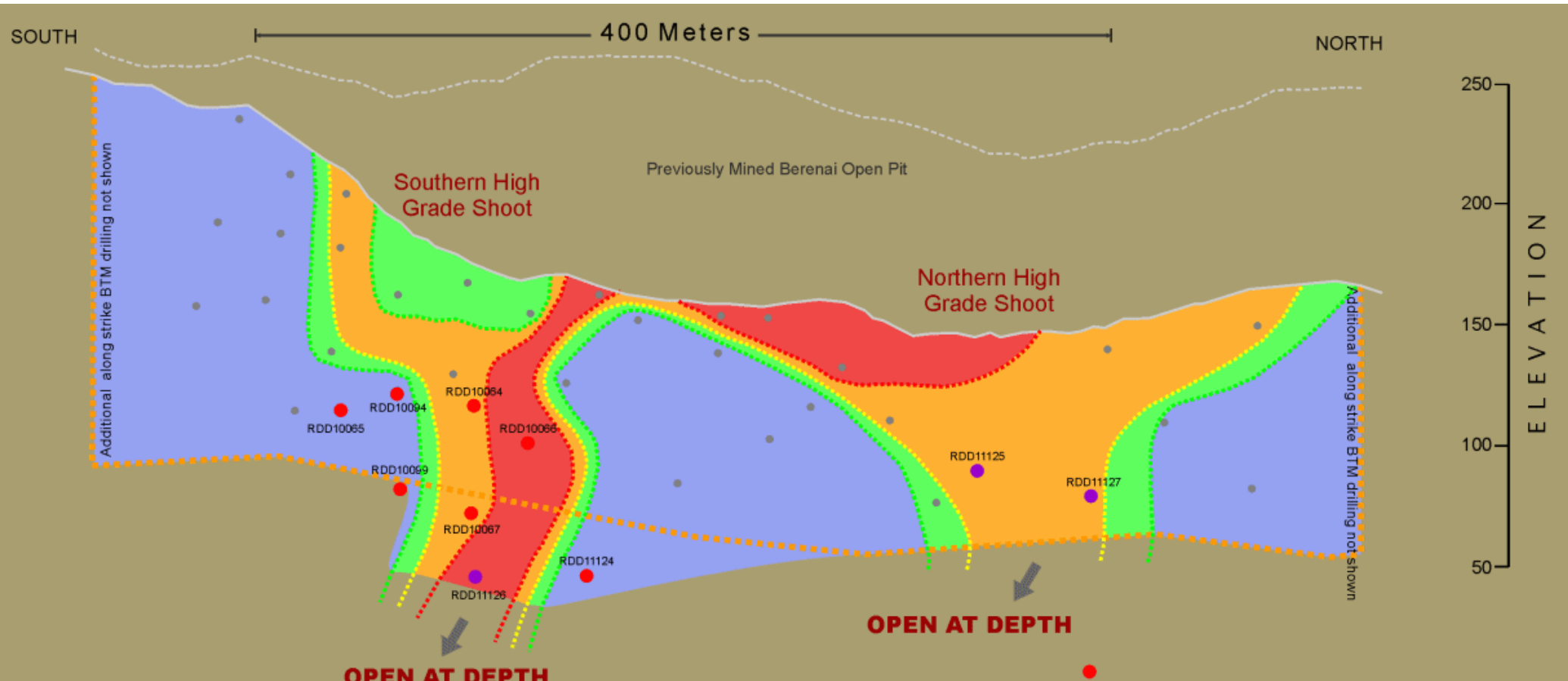
**Bujang pit**

**Belinau pit u/g**

**Proposed waste dump**

**Proposed location of  
plant and tailings area**

# Berenai: Long Section Showing HG Shoots



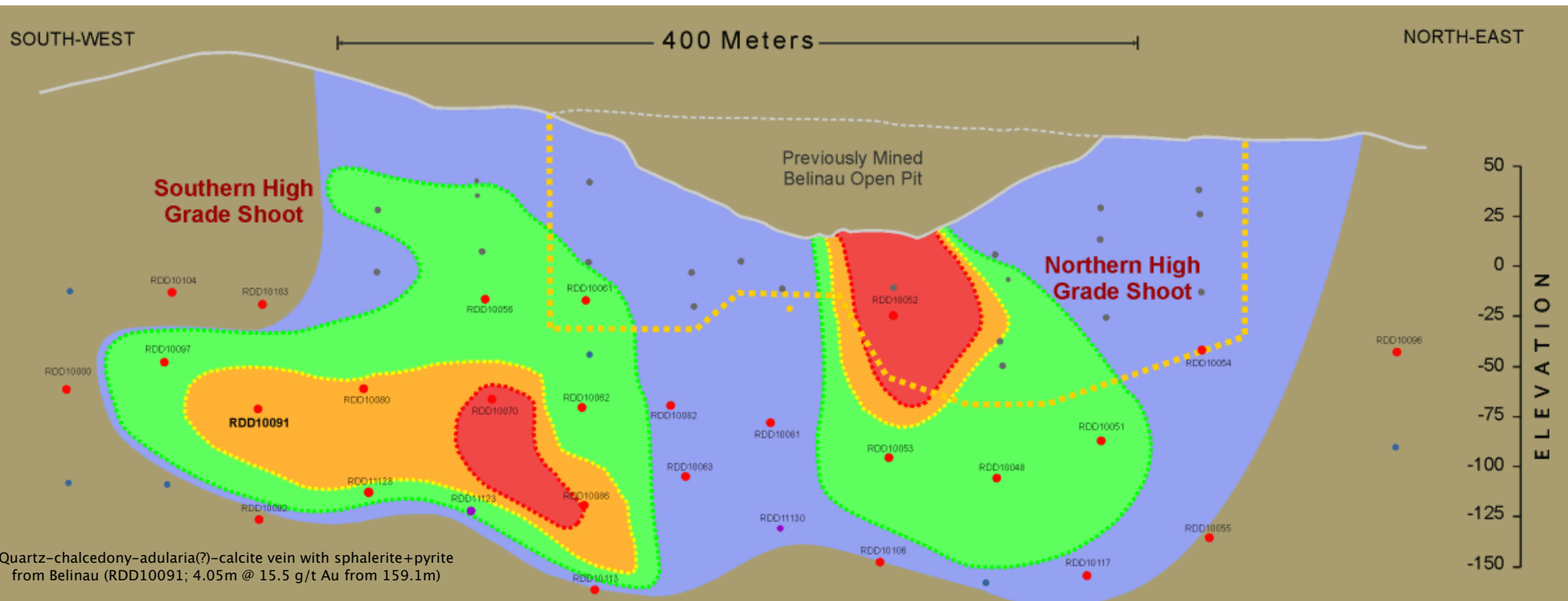
## EXPLANATION

- Barisan Tropical Mining Drill Intercept
- Sumatra Copper & Gold 2008 Drill Intercept
- Sumatra Copper & Gold 2010 Drill Intercept
- Sumatra Copper & Gold 2011 Drill Intercept

--- Extent of Snowden 2009 Resource  
 (Au mg) = Au g/t x true width

■	> 50 mg/t Au	■	15 - 25 mg/t Au
■	25 - 50 mg/t Au	■	< 15 mg/t Au

# Belinau: Long Section Showing HG Shoots



Quartz-chalcedony-adularia(?)—calcite vein with sphalerite+pyrite from Belinau (RDD10091; 4.05m @ 15.5 g/t Au from 159.1m)



## EXPLANATION

- Barisan Tropical Mining Drill Intercept
- Sumatra Copper & Gold 2008 Drill Intercept
- Sumatra Copper & Gold 2010 Drill Intercept
- Sumatra Copper & Gold 2011 Drill Intercept
- Extent of Snowden 2099 Resource
- (Au mg) = Au g/t x true width
- > 50 mg/t Au
- 25 - 50 mg/t Au
- 15 - 25 mg/t Au
- < 15 mg/t Au

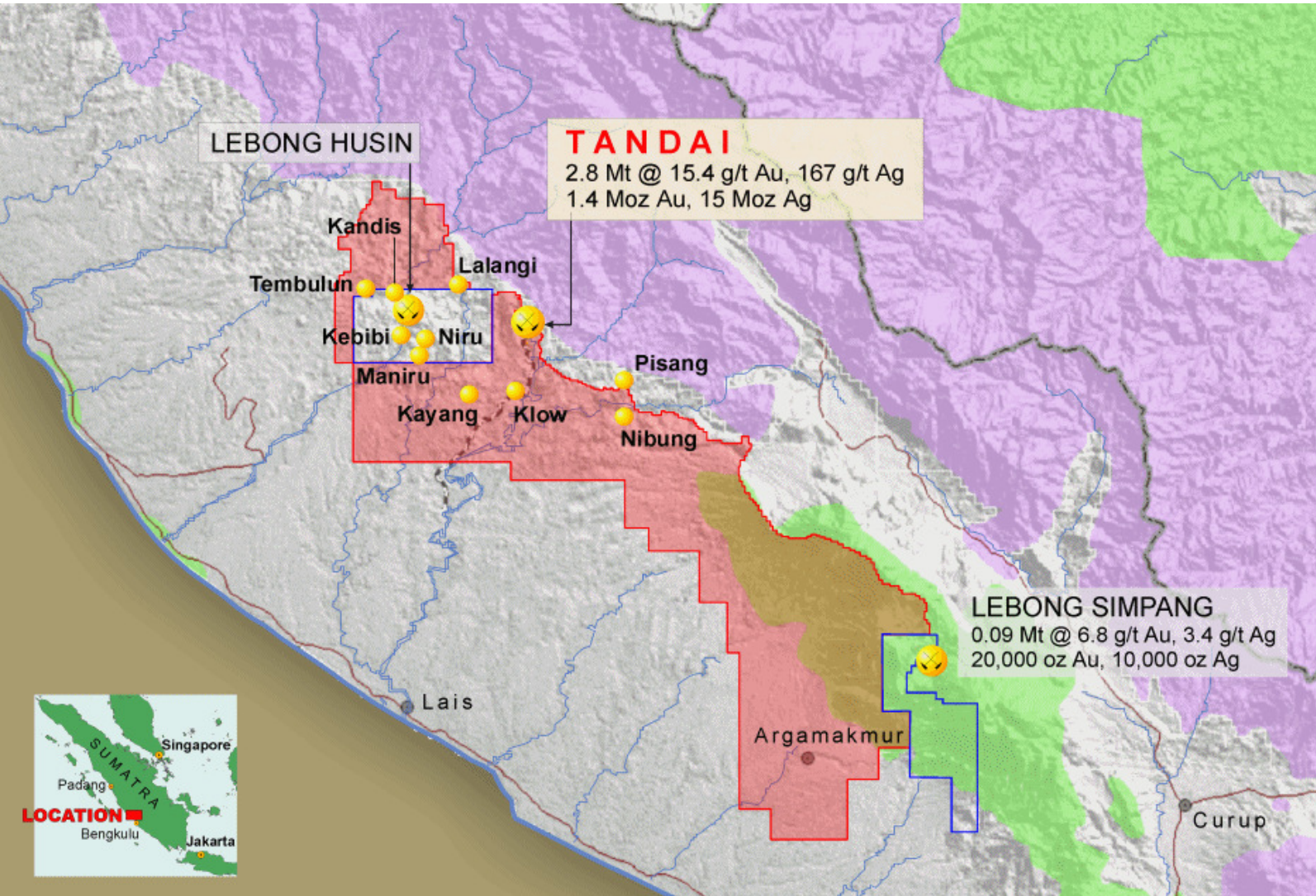




# TANDAI PROJECT



# Tandai: PT Bengkulu Utara Gold IUP



- Prospect location
- 👤 Former Mine with historical production or present resource
- ▭ PT. Bengkulu Utara Gold IUP
- ▭ Aneka Tambang IUP
- ▭ National park
- ▭ Protected forest



# Tandai Project Summary



## High-grade gold and silver project

- Under-explored area with strong potential to be a multi-million ounce district
- Numerous exploration targets
- Covers 99,980ha in Bengkulu Utara regency Bengkulu province

## JV with Newcrest Mining

- Newcrest to spend US\$12 million over 5 years to earn 70%
- Initial commitment US\$1.75 million over 18 months – started Nov 2010

## Development

- Large high-grade underground vein systems targeted
- Drilling of targets commencing Q2 2011

## Infrastructure

- Former Dutch/PT Lusang u/g mine produced 1.4M oz at 15.4 g/t Au

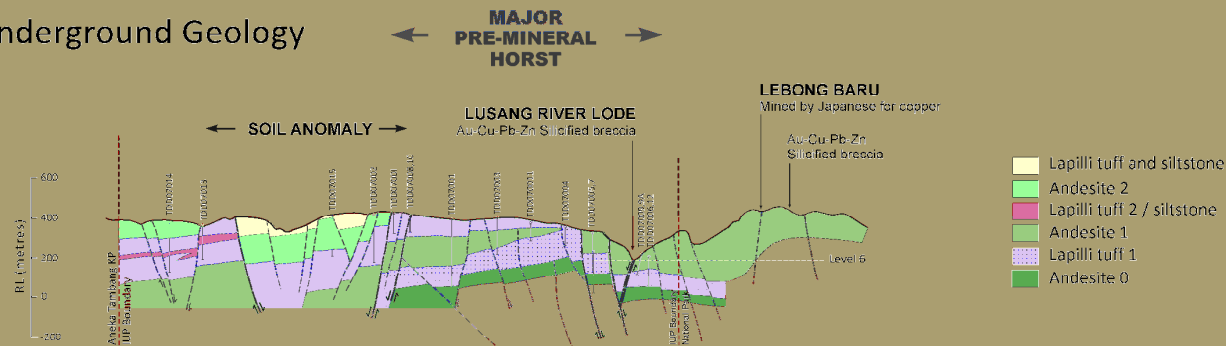
# Tandai Composite Long Section



## Underground Workings on Long Section

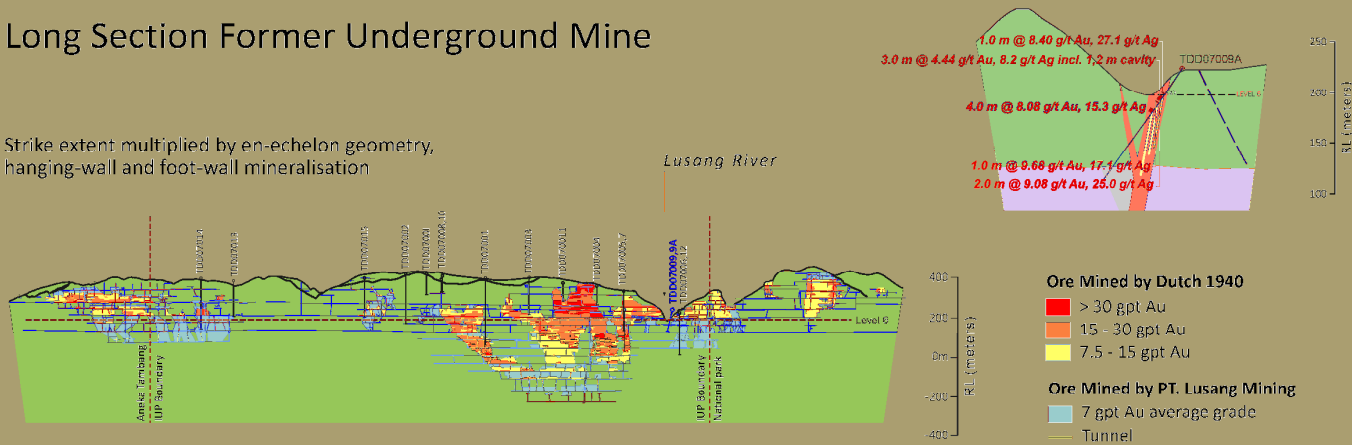


## Underground Geology

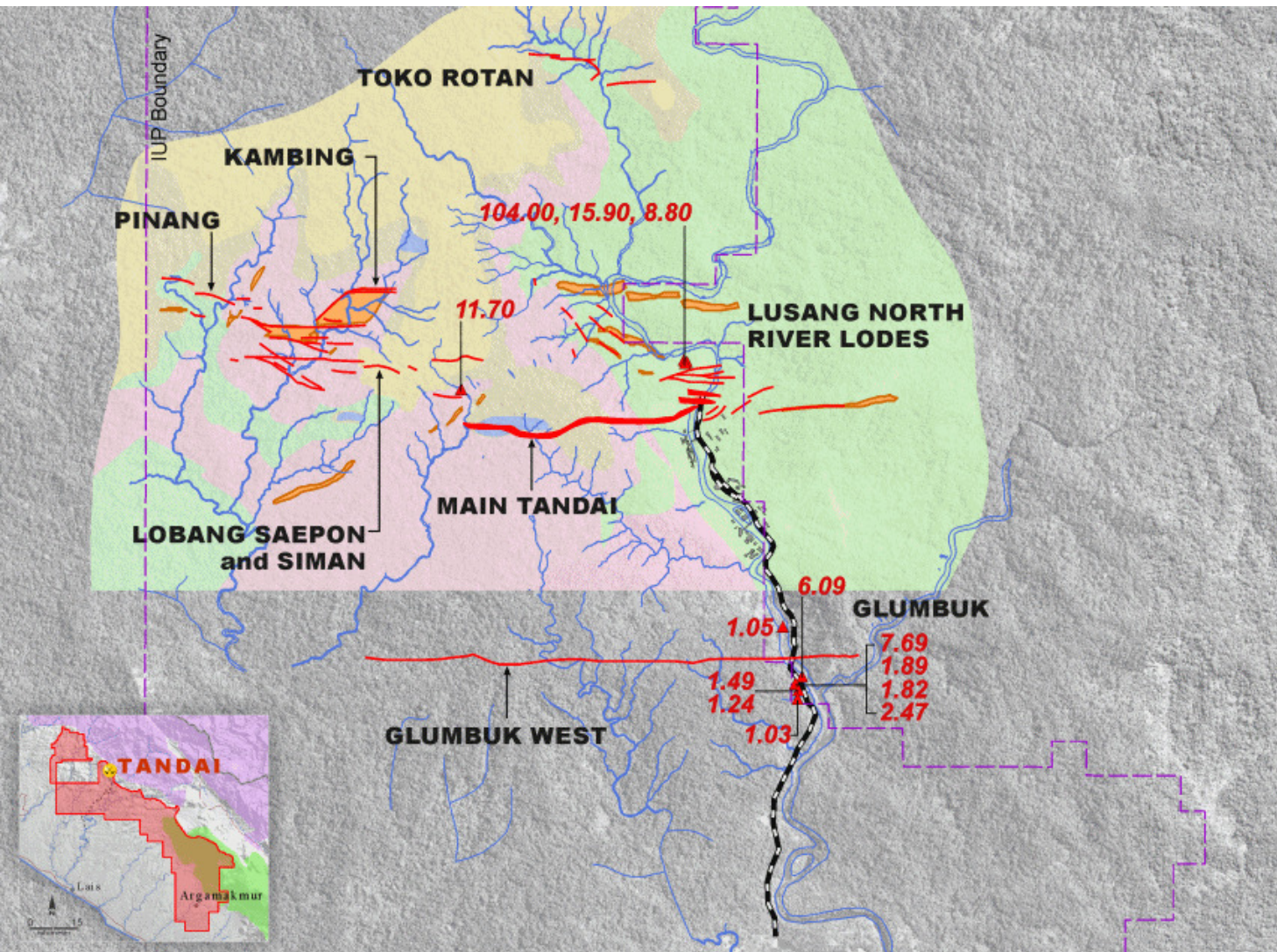


## Long Section Former Underground Mine

Strike extent multiplied by en-echelon geometry, hanging-wall and foot-wall mineralisation



# Tandai Rock Chip Highlights 2011



## LITHOLOGY

- Laharic breccia
- Coralline limestone
- Siltstone, sandstone
- UNCONFORMITY
- Lapilli tuff and volcanic breccia
- Andesite

## MINERALISATION

- Silica clay lithocap
- Quartz vein

## Current sample location

- Rock chips Au g/t
- Rock float Au g/t

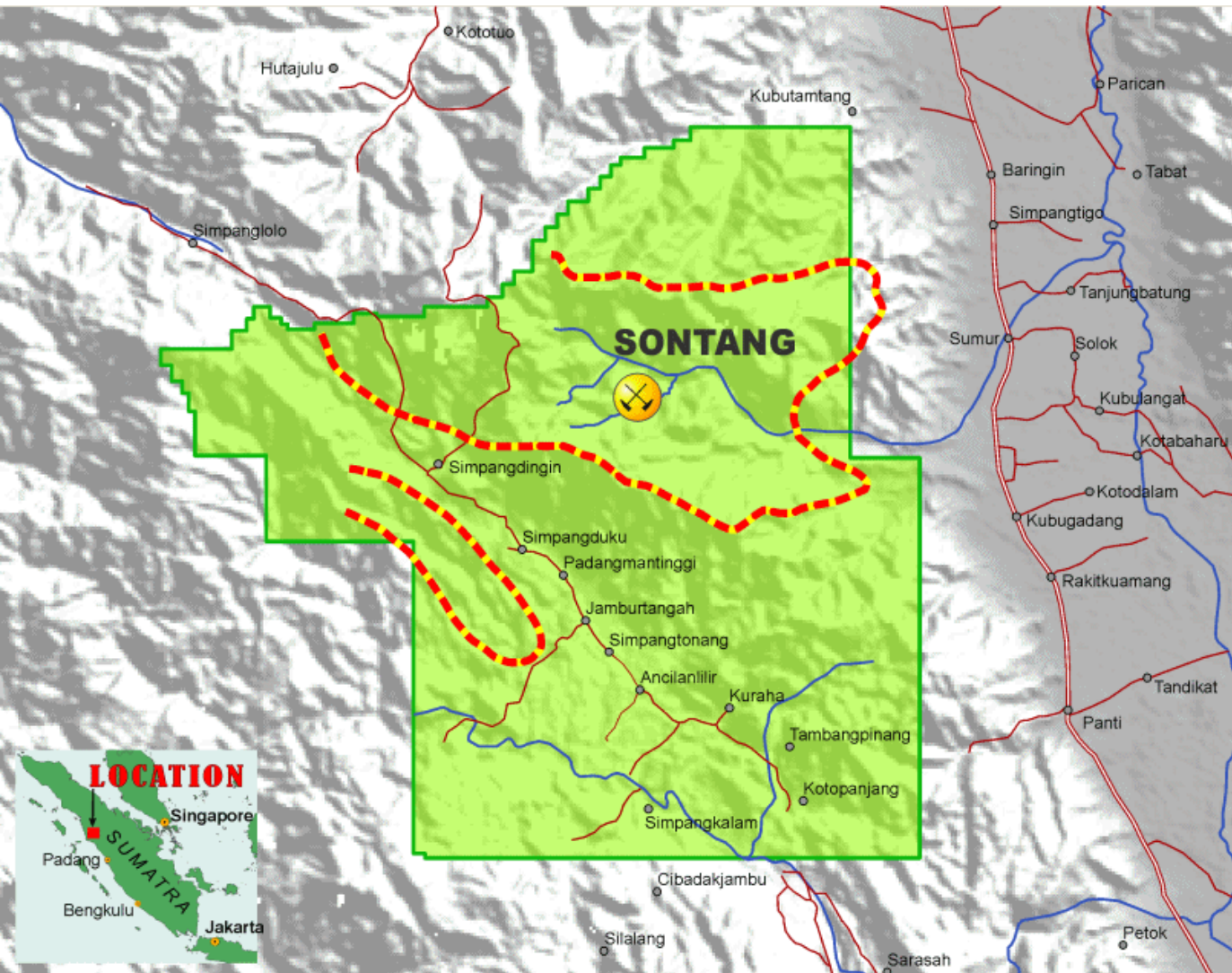






# SONTANG PROJECT



# Pasaman IUP



-  Multi-element drainage anomaly
-  IUP boundary after extension



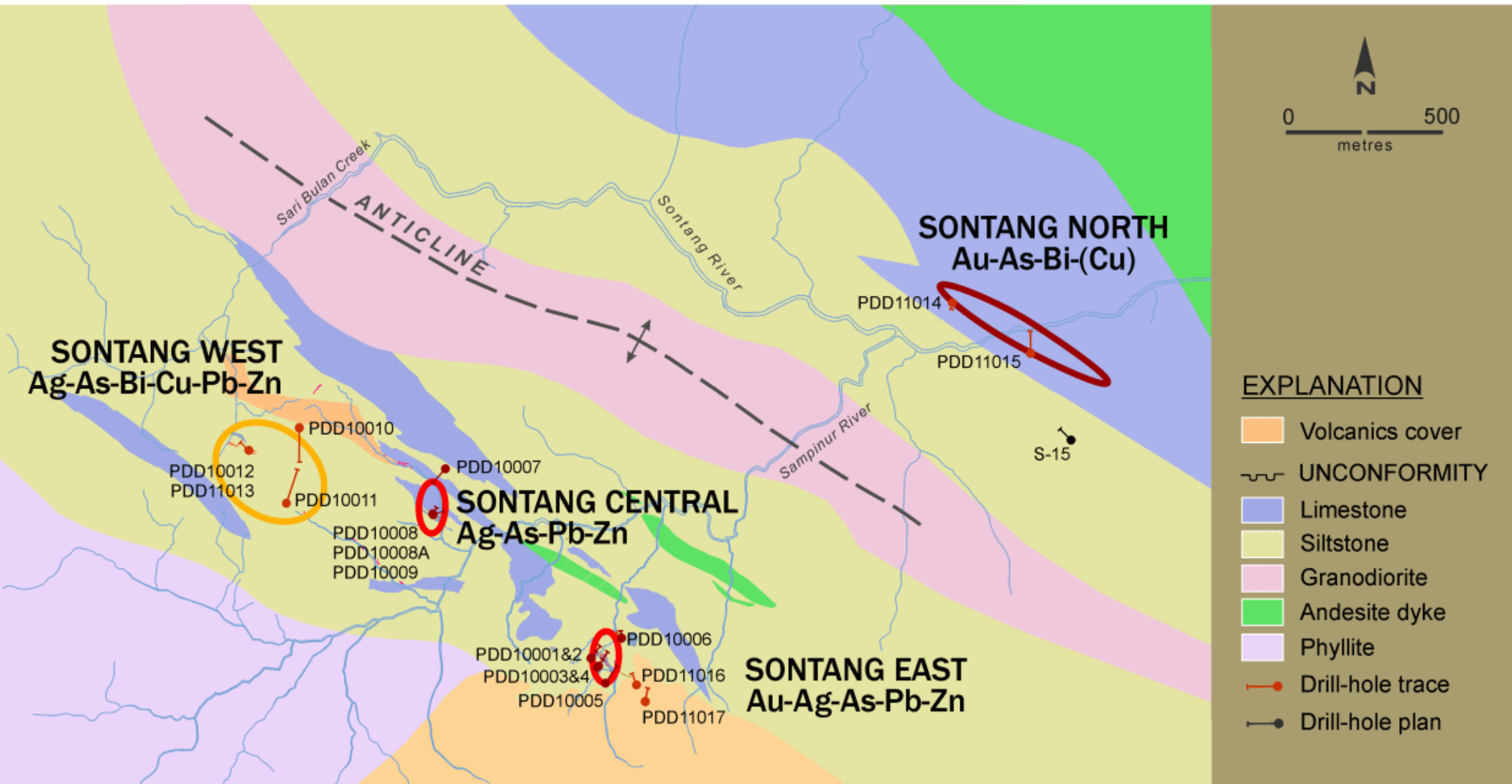
# Sontang – Poly-metallic Discovery



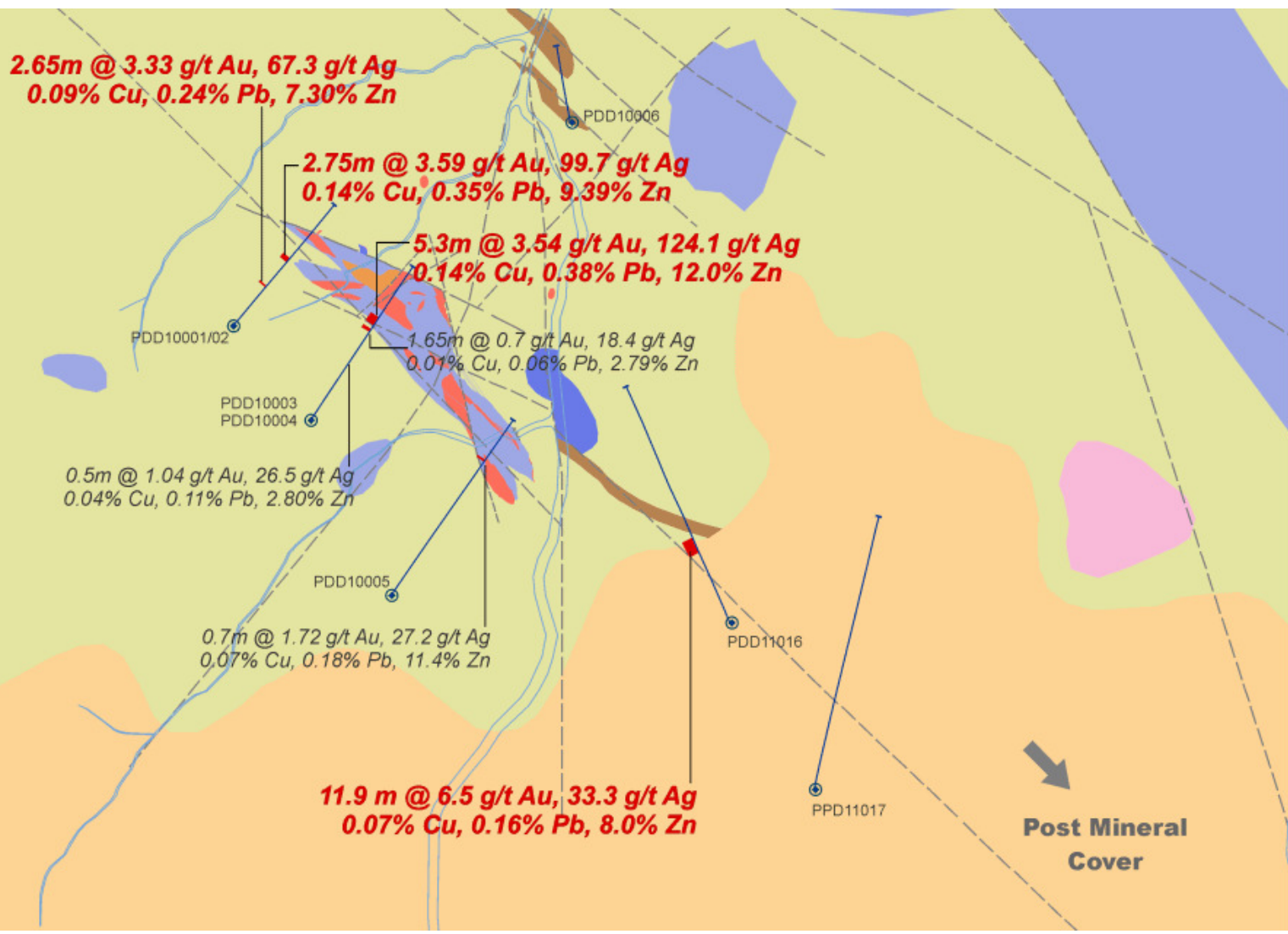
- Located in Pasaman regency West Sumatra province
- 1.2 km NW/SE intrusive related mineralized corridor
- 2017 metre scout drilling program completed in February 2011
- Most significant results obtained in East Sontang mantos
- Best intersection of 11.9 metres @ 6.5 g/t Au, 33 g/t Ag, 8.0 % Zn
- Mineralisation over +150 metre strike length depth to 75 metres
- Evaluating results to determine next steps



# Sontang Geology and Drill-holes



# Sontang East Drilling Results



- EXPLANATION**
- Volcanics cover
  - UNCONFORMITY
  - Limestone
  - Siltstone
  - Granodiorite
  - Massive sulphide
  - Gossan
  - Fault
  - Drill-hole trace

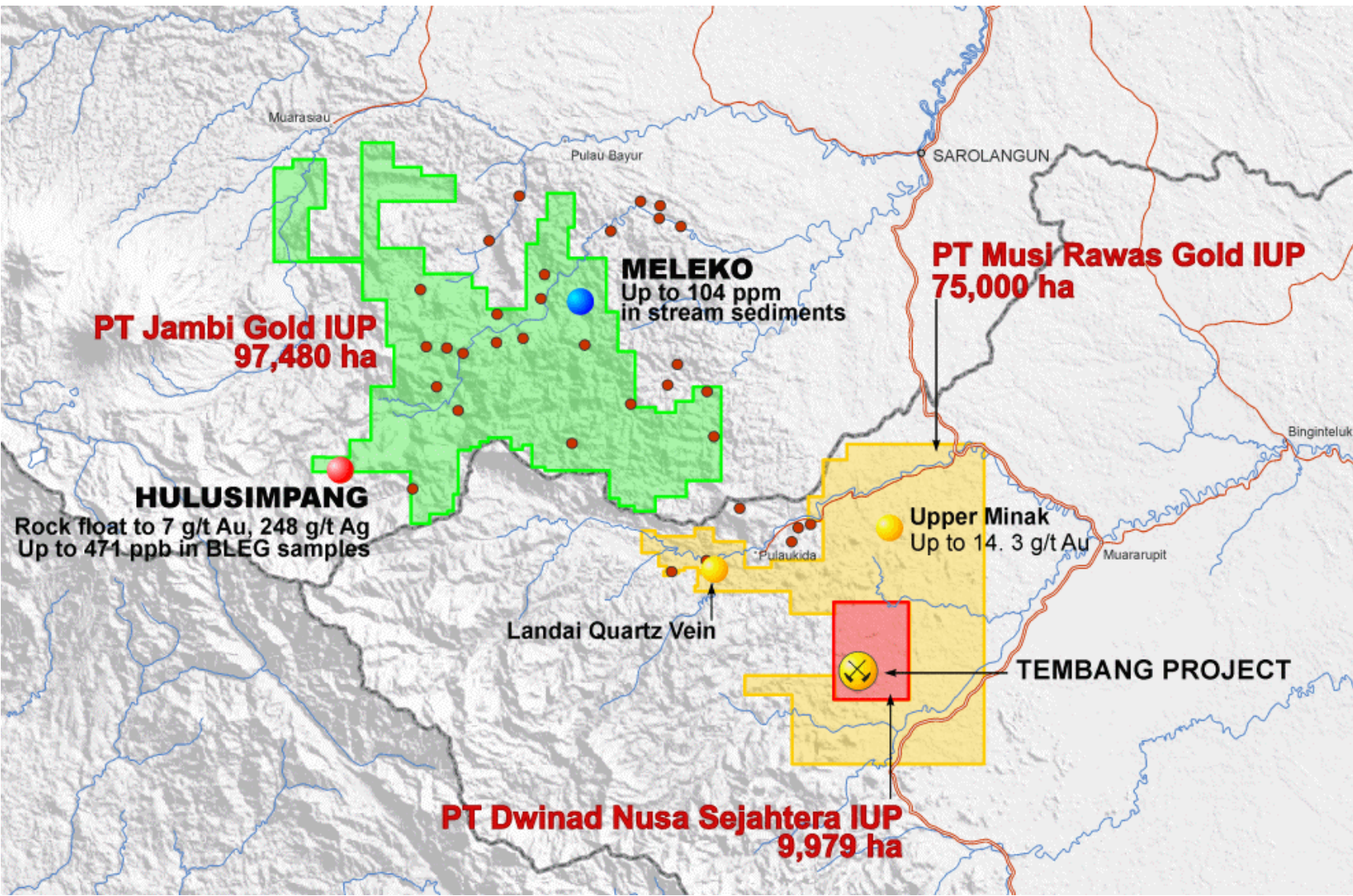


# GREENFIELD PROJECTS

Jambi, Musi Rawas, Madina



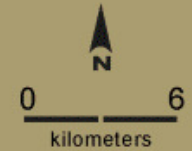
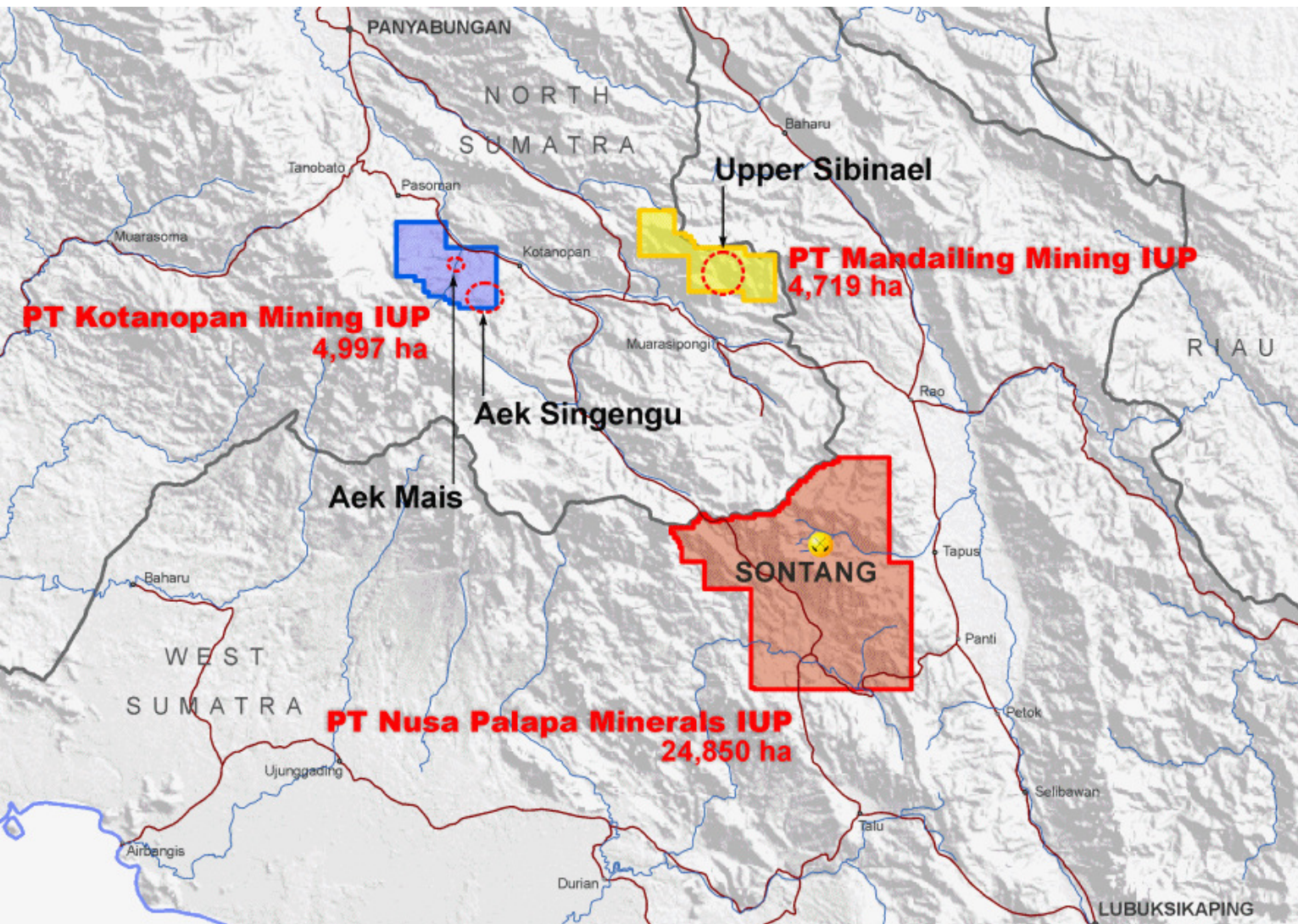
# Jambi – Musi Rawas Exploration Axis



- Alluvial gold workings
- Sediment hosted
- Epithermal
- Mesothermal



# Madina – Stream Sediment Anomalies



# Summary



- Tembang exploration success triggered production decision
- 2013 production goal c 60-70,000 oz Au pa with 10 year life
- Company reclassification as an emerging producer
- Significant exploration alliance with Newcrest Mining
- Exploration upside based on large prospective land package
- Strong experienced management and effective local set-up
- Lagging peer group in value terms – significant upside potential