



4 March 2011

The Manager Companies
ASX Limited
20 Bridge Street
Sydney NSW 2000

(7 pages by email)

Dear Madam

RESOURCE DRILLING PROGRAM COMPLETED AT TEMBANG PROJECT

Highlights

- **Drill program underpins decision to advance Tembang into production**
- **Best ever intercept of 17.3 metres @ 9.73g/t Au, 11.0g/t Ag at Berenai south**
- **Both south and north Berenai shoots open at depth**
- **Updated resource statement imminent**
- **5,000 metre in-fill drill program under way**

Sumatra Copper & Gold plc (ASX: SUM, 'Sumatra' or 'the Company') has completed the 13,468 metre resource drill program at its Tembang Gold and Silver Project, located in central Sumatra, Indonesia, with all remaining assay results received.

The program successfully outlined further depth potential to high grade shoots at Berenai and refined the grade distribution at Belinau.

The Company is pleased to report its best ever intersection with hole RDD11126 intersecting **17.3 metres @ 9.73g/t Au, 11.0g/t Ag** from 146 metres downhole including **10.4 metres @ 15.87g/t Au, 14.1g/t Ag**. This highly significant intersection on the southern shoot of the Berenai/Nuri vein system extends the shoot approximately 50 metres below the limit of the Snowden resource. This result indicates a potential south westerly plunge to this shoot and is **open** at depth.

Further drilling on the northern shoot has also returned excellent results with hole RDD 11127 intersecting **4.2 metres @ 13.48g/t Au, 65.2g/t Ag** from 227.2 to 231.4 metres and RDD 11125 intersecting **5.4 metres @ 5.6g/t Au and 225.0g/t Ag** from 225.3 to 230.7 metres . This zone is also **open** at depth.

SUMATRA COPPER & GOLD plc ABN 14 136 694 267 Level 2, 66 Hunter Street, Sydney NSW 2000 Australia

P +61 2 9300 3377 **F** +61 2 9221 6333 **E** info@sumatracoppergold.com **W** www.sumatracoppergold.com

Registered in England and Wales Registered Number 5777015 Registered address: 39 Parkside, Cambridge CB1 1PN United Kingdom

At Belinau another significant intercept was returned in hole RDD 11123 which intersected **2.9 metres @ 9.61g/t Au and 9.1g/t Ag** from 208.0 to 210.9 metres. This refines and extends the southern shoot to the south west.

A hanging wall vein was also intersected in RDD 11131 from 120.3 to 123.3 metres which returned **3.0 metres @ 13.15g/t Au and 13.8g/t Ag**. This attests to the prospectivity of this productive vein system and will add to the upcoming resource.

An updated resource statement is being finalised and will be published in March 2011. The resource will enable the pre-feasibility processes (announced on 24 February 2011) to be completed and the scope of the project finalised for the definitive feasibility, which is scheduled to commence in the second half of 2011. A 5,000 metre in-fill drilling program utilising two rigs is under way and a final resource statement will be issued by an independent expert on its completion.

Sumatra's Managing Director, Jocelyn Waller said the results from the resource drilling program at Tembang gave significant support to the Company's decision to advance the Project into production.

"Yet again we have some excellent drilling results to report, with the resource drilling program at Tembang very successfully adding good quality ounces to the existing resource and confirming high grade shoots still open at depth. We believe the new resource, which is due soon, will underpin the mine development we are now embarking upon," said Mr Waller.

Other

The information in this report that relates to Exploration Results, Mineral Resources or Ore Reserves is based on information compiled by Matthew Farmer, geologist, who is a member of the Australian Institute of Mining and Metallurgy. Matthew Farmer is an employee of the Company who has sufficient experience which is relevant to the style of mineralisation and type of deposit under consideration and to the activity which he is undertaking to qualify as a Competent Person as defined in the 2004 Edition of the "Australasian Code for the Reporting of Exploration Results, Mineral Resources and Ore Reserves". Matthew Farmer has consented to the inclusion in this report of the matters based on his information in the form and context in which they appear.

For further information please contact:

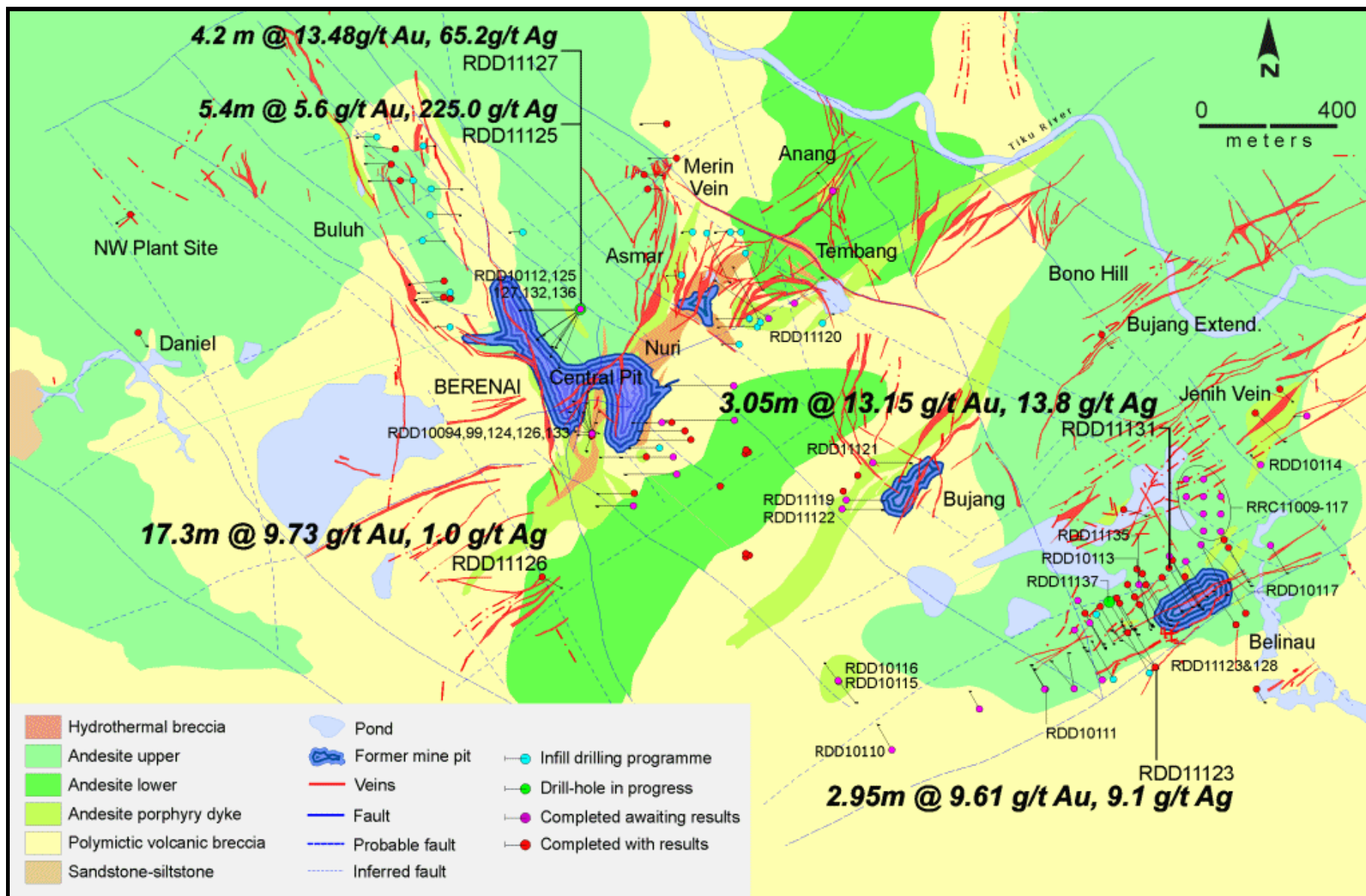
Jocelyn Waller	Richard Edwards	Melanie Gray Stokes
Managing Director	Company Secretary	Investor Relations
Sumatra Copper & Gold plc	Sumatra Copper & Gold plc	FD
+44 7843 054287	+61 2 9300 3300	+61 8 9386 1233

Yours sincerely

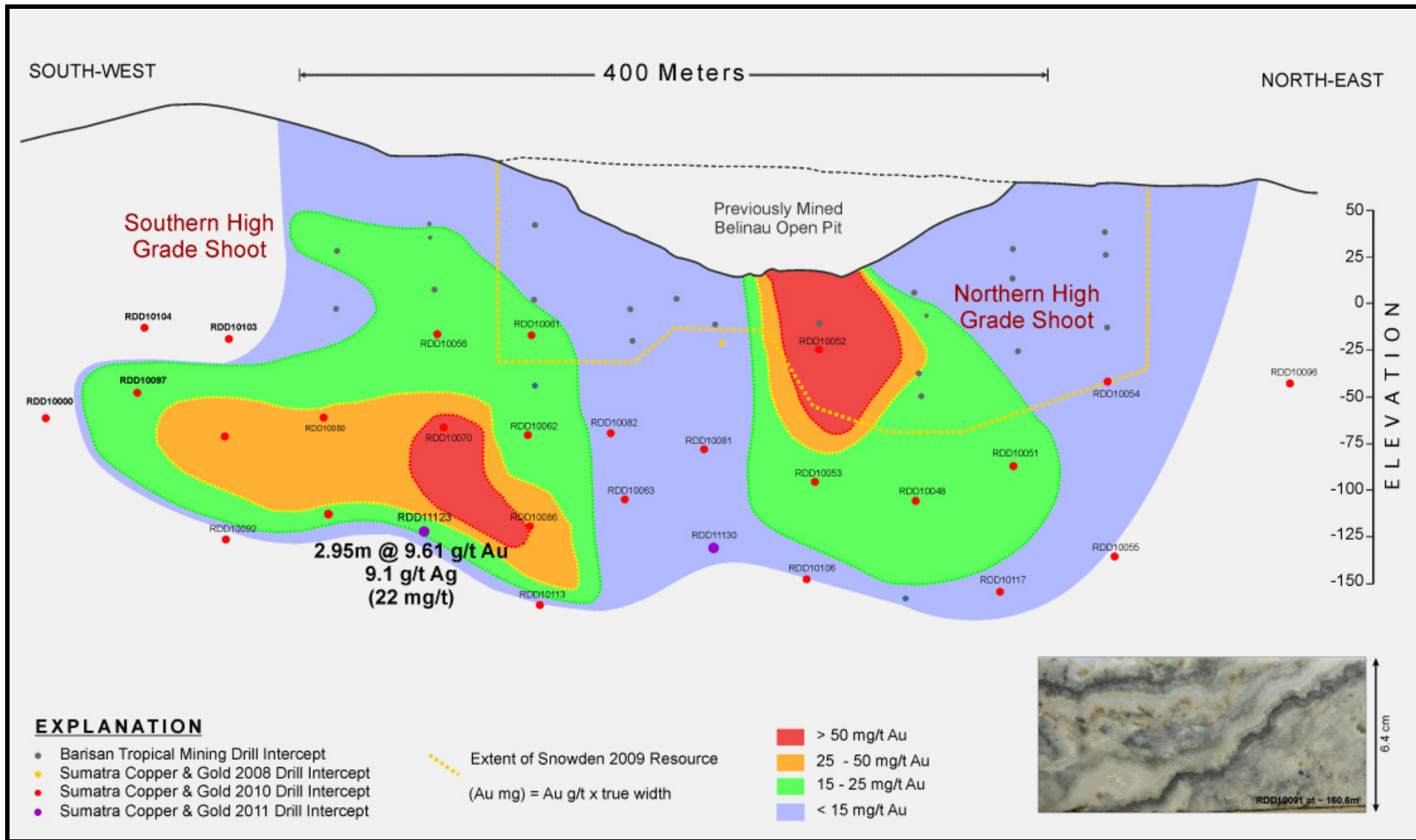


Warwick Morris
Chairman

pjn5881



Plan of Tembang drilling program showing latest results



Long section through Belinau showing drill pierce points and latest intercepts

Tembang 2011 Resource Drilling Significant Intersections > 0.35g/t Au from 10 January 2011 until 2 March 2011

Hole No	Location	Type	From	To	Length	Au g/t	Ag g/t	Comments	
RDD10110	Berenai SW	Belinau Structure	No Significant Mineralisation						
RDD10111	Belinau SW	Belinau Structure	160.90	161.90	1.00	0.52	0.6		
RDD10112	Berenai	Halo	2.50	8.55	6.05	0.65	21.5	Includes 2.35m <0.35g/t Au	
RDD10112	Berenai	Halo	11.80	18.00	6.20	0.81	11.5	Includes 1.1m <0.35g/t Au	
RDD10112	Berenai	Halo	23.30	26.30	3.00	0.46	4.6	Includes 1m <0.35g/t Au	
RDD10112	Berenai	Vein	217.20	218.50	1.30	1.36	5.1		
RDD10112	Berenai	Vein	286.35	289.20	2.85	0.77	28.1	Includes 2.05m <0.35g/t Au but with high Ag	
RDD10113	Belinau		BARREN						
RDD10115	Anita		No Significant Mineralisation						
RDD10116	Anita		No Significant Mineralisation						
RDD10117	Belinau	W.Dump	2.00	13.00	11.00	4.52	87.0	Includes 1m with no recovery assigned as null values	
RDD10117	Belinau	Vein	272.90	273.65	0.75	2.91	2.2		
RDD11119	Bujang	W.Dump	0.00	10.00	10.00	0.33	7.0	Includes 4m <0.25g/t Au	
RDD11119	Bujang	Halo	172.00	173.00	1.00	8.61	6.0		
RDD11119	Bujang	Vein	178.60	183.20	4.60	2.05	54.5	Includes 0.8m <0.35g/t Au	
RDD11120	Asmar	Halo	23.70	29.30	5.60	0.15	33.1	Low Au, High Ag	
RDD11120	Asmar	Halo	64.10	65.10	1.00	0.49	17.2		
RDD11120	Asmar	Vein	89.00	99.30	10.30	1.10	9.1	Includes 2.7m <0.35g/t Au	
RDD11120	Asmar	Halo	106.00	107.00	1.00	0.46	2.6		
RDD11120	Asmar	Halo	141.00	143.90	2.90	0.38	5.2		
RDD11120	Asmar	Halo	154.00	155.30	1.30	4.71	12.1	Includes 0.5m <0.35g/t Au	
RDD11120	Asmar	Halo	159.30	167.30	8.00	1.23	12.3	Includes 2m <0.35g/t Au	
RDD11120	Asmar	Halo	170.00	173.00	3.00	0.89	3.1		
RDD11120	Asmar	Halo	214.00	217.00	3.00	0.35	2.3	Includes 1m <0.35g/t Au	
RDD11121	Bujang	Halo	12.00	14.00	2.00	1.99	3.2		
RDD11121	Bujang	Vein	NOT DEVELOPED						
RDD11123	Belinau	Vein	207.95	210.90	2.95	9.61	9.1		
RDD11124	Berenai	Halo	13.45	14.70	1.25	2.35	26.6		

Hole No	Location	Type	From	To	Length	Au g/t	Ag g/t	Comments
RDD11124	Berenai	Halo	16.70	19.70	3.00	1.38	14.8	
RDD11124	Berenai	Halo	27.40	30.40	3.00	0.34	5.3	
RDD11124	Berenai	Halo	44.60	45.60	1.00	1.59	8.7	
RDD11124	Berenai	Halo	68.60	69.70	1.10	1.44	6.7	
RDD11124	Berenai	Halo	110.60	112.60	2.00	0.73	4.5	
RDD11124	Berenai	Halo	142.10	144.00	1.90	0.47	3.4	
RDD11124	Berenai	Vein	168.80	173.40	4.60	0.27	2.5	Includes 2.2m <0.35g/t Au
RDD11125	Berenai	Halo	1.70	5.70	4.00	0.23	28.6	Includes 2m <0.35g/t Au, with high Ag
RDD11125	Berenai	Halo	138.00	141.50	3.50	0.63	1.7	Includes 1.1m <0.35g/t Au
RDD11125	Berenai	Vein	225.30	230.70	5.40	5.63	224.7	Includes 3m @ 9.52g/t Au, 364.7g/t Ag
RDD11125	Berenai	Halo	238.70	240.50	1.80	0.06	32.4	Low Au, High Ag
RDD11125	Berenai	Halo	242.50	245.50	3.00	0.05	41.7	Low Au, High Ag
RDD11126	Berenai	Halo	131.00	135.00	4.00	0.50	28.9	
RDD11126	Berenai	Vein	146.00	163.30	17.30	9.73	11.0	Includes 3m <0.35g/t Au, Includes 10.4m @ 15.87g/t Au, 14.1g/t Ag
RDD11127	Berenai	Halo	35.00	36.00	1.00	0.68	25.7	
RDD11127	Berenai	Halo	44.00	45.00	1.00	0.44	0.8	
RDD11127	Berenai	Halo	172.00	173.00	1.00	0.69	6.4	
RDD11127	Berenai	Vein	222.70	225.20	2.50	1.70	79.2	Includes 1m <0.35g/t Au, with high Ag
RDD11127	Berenai	Vein	227.20	231.40	4.20	13.48	65.2	Includes 2m @ 27.8g/t Au, 103.5g/t Ag
RDD11128	Belinau	Vein	228.60	230.00	1.40	0.34	0.7	Includes 1m <0.35g/t Au
RDD11130	Belinau	Vein	48.00	49.60	1.60	0.95	4.8	Hanging wall vein
RDD11130	Belinau	Halo	94.00	97.00	3.00	0.73	1.2	
RDD11130	Belinau	Vein	239.00	241.00	2.00	2.55	3.9	Main vein
RDD11131	Belinau	Vein	120.30	123.35	3.05	13.15	13.8	Hanging wall vein
RDD11131	Belinau	Vein	176.10	177.20	1.10	1.74	4.8	Main vein