

29 August 2011

## **TPL SIGNS NATIVE TITLE AGREEMENTS AND EXTENDS GRANTED TENURE WITHIN THE CANNING BASIN, WESTERN AUSTRALIA**

TPL Corporation Ltd (ASX Code: TPL or “the Company”) is pleased to announce the achievement of a significant milestone with the signing of four Native Title, Heritage Protection and Mineral Exploration Access Agreements (HPA) and the subsequent recent granting of a further fifteen exploration licences within the prospective coal-bearing Canning Basin (Appendix 1, Figure 1). The granted tenements are held in the name of TPL’s wholly owned subsidiary Canning Basin Coal Pty Ltd.

TPL recently completed negotiations with traditional owners of the Tjurubalan, Gooniyandi and Ngurrara native title groups and their representative body the Kimberley Land Council culminating in the signing of HPAs covering their lands and adjoining no-claim lands in which traditional owners within these groups have declared cultural links (Figure 2). Also TPL has recently agreed in principle with the Kurungal group on a HPA. This agreement is currently being finalised by both party’s lawyers.

Agreement with traditional owners has resulted in withdrawal of objections to tenement applications and the establishment of heritage protection protocol. Thus an additional 15 exploration licences have been recently granted and TPL now has a framework to proceed with heritage clearance surveys required prior to on ground exploration. TPL is currently liaising with the KLC in organising heritage clearance surveys for a proposed drilling program within the Lightjack (TPL, ASX 21<sup>st</sup> Dec10, 13<sup>th</sup> July11).

The granting of a further 15 tenements has increased TPL’s granted tenure within the emerging Canning Basin coal province in the northwest of Western Australia by over 3740 km<sup>2</sup>. This has extended TPL’s landholding in the Canning Basin to 6858km<sup>2</sup>. These tenements lie within and to the south of TPL’s Lightjack Hill Project, extending south to areas around Hall Range and Mt Stewart. Historic drilling data captured by TPL shows coal intercepts and intersections of carbonaceous material in holes drilled within the vicinity of all recently granted tenure (Figure 3).

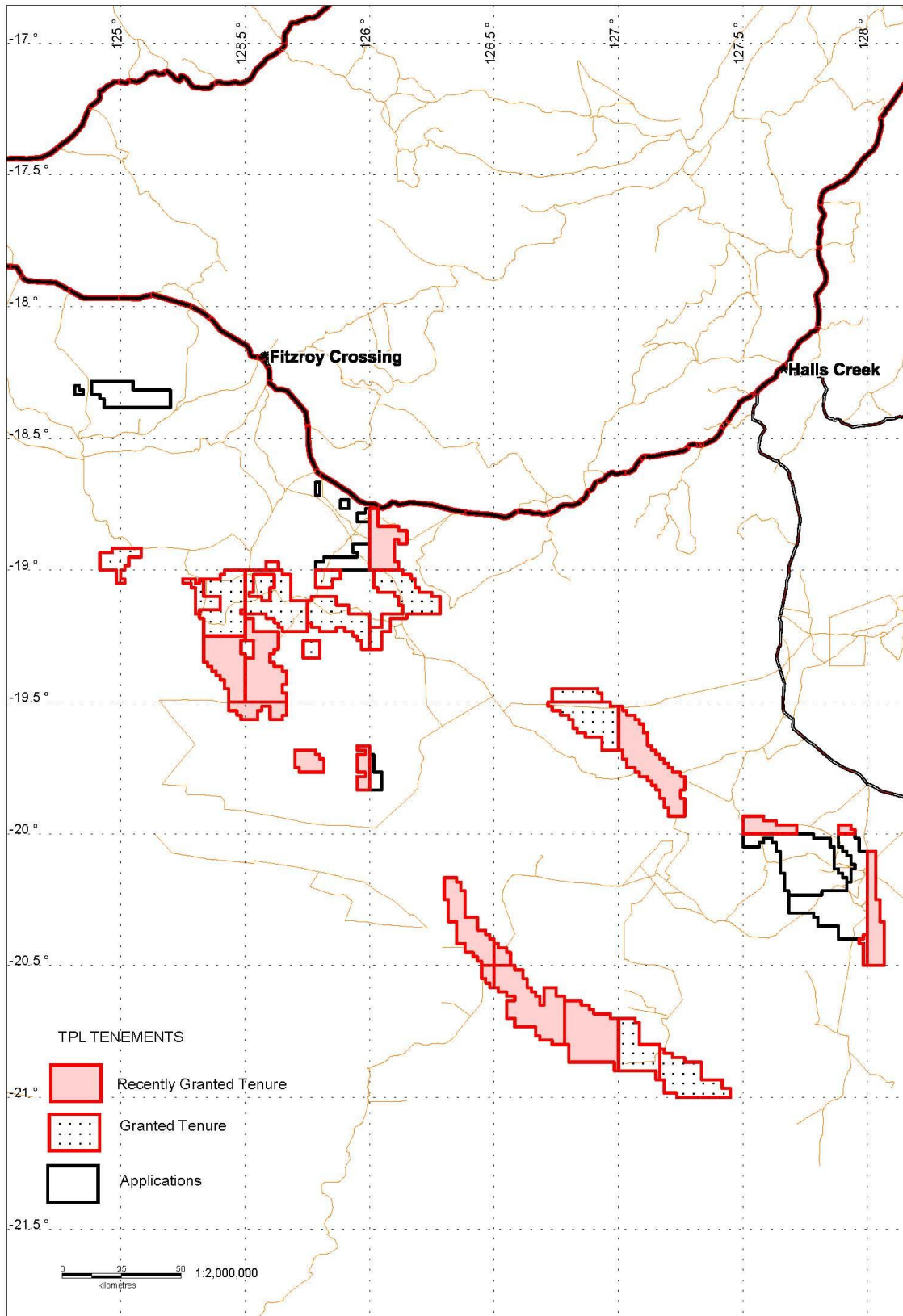
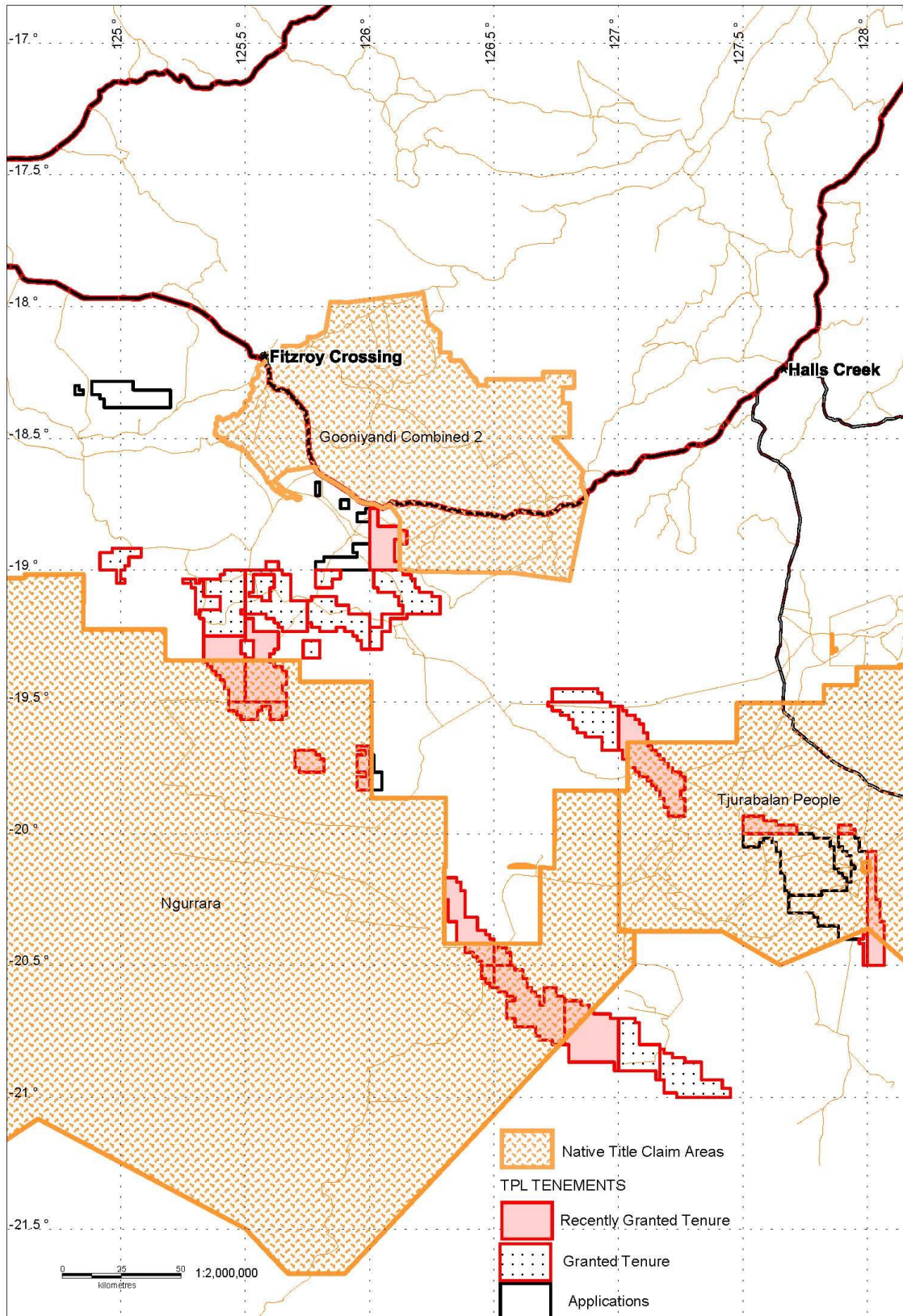


Figure 1: TPL Tenure Status within Canning Basin, Western Australia



**Figure 2: TPL Tenure and Gooniyandi, Tjurabalan and Ngurrara Claim Areas**

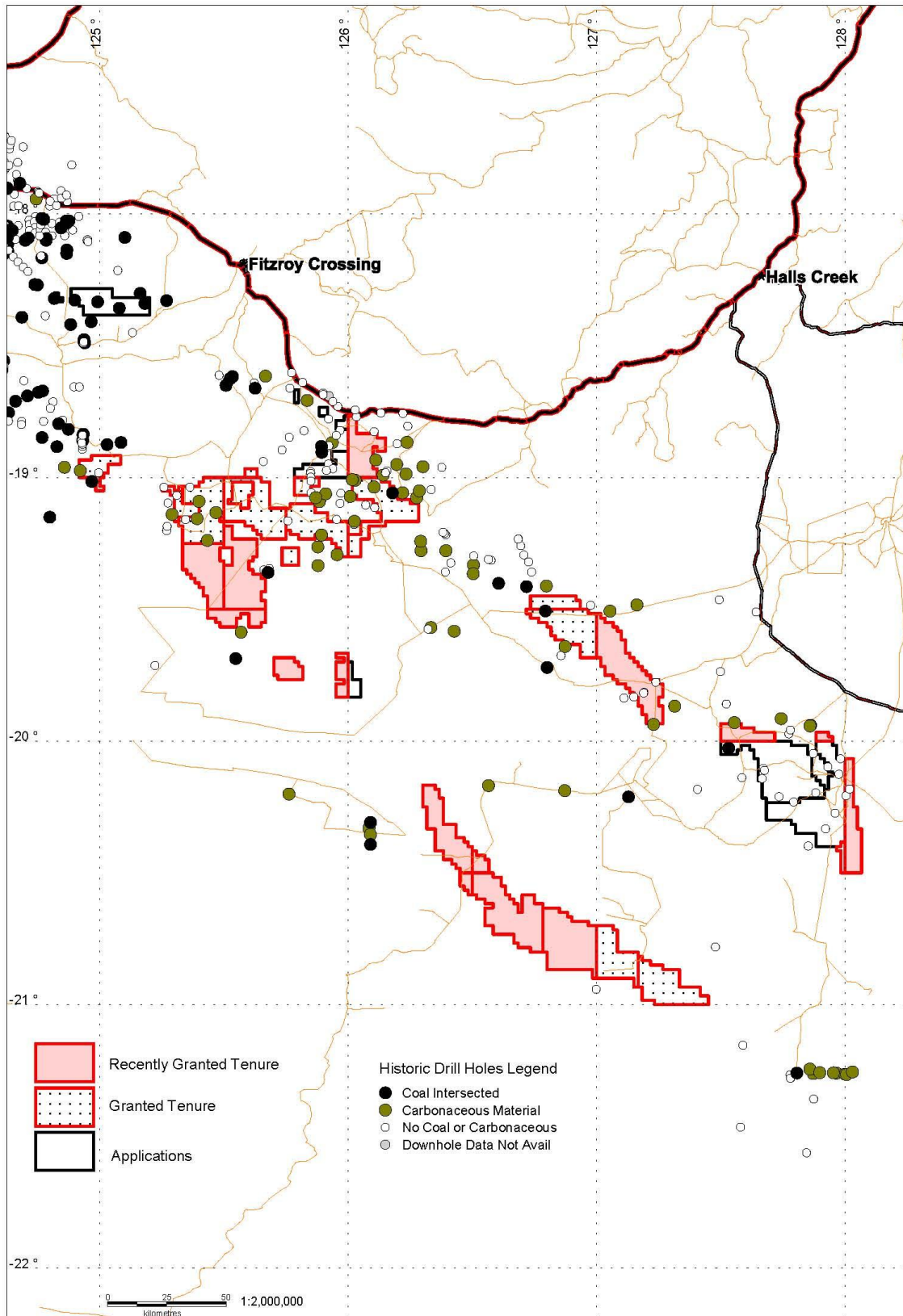


Figure 3: TPL Tenure and Historic Drill Hole Data

# TPL CORPORATION LIMITED

ASX: TPL

The Canning Basin is an emerging Permian Coal Province with considerable potential as confirmed by Rey Resources Ltd's (REY) recent positive definitive feasibility study, delineation of 536 Mt thermal coal resource and an exploration target of 9 to 11 Bt (REY ASX, Apr; June 2011). REY's project lies within the western end of the Fitzroy Graben. The Fitzroy Graben lies within the northern portion of the Canning Basin and is a deep trough of sedimentary rocks over 100 km wide and up to 15 km in depth. TPL's tenement holding lies in the central and eastern portions of the Graben which is just as prospective but grossly under-explored for coal. The Permian Bowen and Sydney Basins in eastern Australia contain approximately 30 Bt of coal each.

TPL consider that given recent developments and the considerable potential that has already been highlighted, the Canning Basin is strategically located to take advantage of the burgeoning long term demand for thermal coal from both India and China. In comparison to coal exporting ports on the east coast of Australia the Canning Basin is approximately 6 to 9 days closer by ship to these developing fast growing economies.

## **For further information please contact**

Mark Gunther, Managing Director

Hugh Warner, Chairman

Tel: (08) 92173300

## **Competent Person Statement**

*The information in this report that relates to Exploration Results is based on information compiled by Mr Mark Gunther who is a full time employee of TPL Corporation Limited and a Member of the Australian Institute of Geoscientists. Mr Gunther has sufficient experience which is relevant to the style of mineralisation and types of deposits under consideration, and to the activity which has been undertaken, to qualify as a Competent Person as defined by the 2004 edition of the "Australasian Code for Reporting of Exploration Results, Mineral Resources and Ore Reserves". Mr Gunther consents to the report being issued in the form and context in which it appears.*

## **Exploration Target**

*Any discussion in relation to an exploration target is only conceptual in nature, as there has been insufficient exploration to define a Mineral Resource and it is uncertain if further exploration will result in the determination of further Mineral Resources.*

## **TPL Corporation Limited**

Suite 6, 245 Churchill Avenue Subiaco  
PO Box 1273 Subiaco WA 6904

[www.tplcorporation.com.au](http://www.tplcorporation.com.au)

Tel: +61 8 9217 3300 Fax: +61 8 9388 3006  
info@tplcorporation.com.au

**Appendix 1. Tenements Recently Granted to Canning Basin Coal.  
(TPL's 100% wholly owned subsidiary)**

<b>TENEMENT NUMBER</b>	<b>AREA (BL)</b>	<b>DATE GRANTED</b>
E 04/1976	109	08/08/2011
E 04/1985	133	08/08/2011
E 45/3553	42	27/07/2011
E 45/3554	31	27/07/2011
E 45/3555	26	27/07/2011
E 80/4338	104	11/08/2011
E 80/4341	39	11/08/2011
E 80/4342	7	11/08/2011
E 80/4343	160	11/08/2011
E 80/4344	156	10/08/2011
E 80/4345	16	10/08/2011
E 80/4346	79	11/08/2011
E 80/4347	169	11/08/2011
E 80/4361	77	11/08/2011
E 80/4362	12	11/08/2011