

Quarterly Report – December Quarter 2010

HIGHLIGHTS

- Geological mapping has identified initial near surface coal drill targets within the Lightjack Hill Project, Canning Basin.
- A 72% increase in granting tenure to 1230 km² within the prospective coal bearing Canning Basin.
- Negotiation on Access Agreement with Traditional Owners has progressed with consensus on many more clauses.
- Growth strategy expanded to include reviewing of coal exploration opportunities in Queensland and Mongolia.
- Website business “Total Hits” CD release to Perth’s café/restaurant scene has received very strong support.

COMPANY OVERVIEW

TPL Corporation Limited (TPL) is increasingly more focused on mineral resource exploration with current activities centered on its Canning Basin Coal play. Through its 100% owned subsidiary Canning Basin Coal Pty Ltd, TPL has approximately 14,000 km² of total landholding held under both granted and application status. Seven of a total of sixty-one applications have been granted. TPL’s landholding contains highly prospective, potential coal bearing, Permian stratigraphy within the Fitzroy Graben, Canning Basin, Western Australia. Rey Resources’ (REY) advanced thermal coal project lies to the north west of TPL’s ground (Figure 1).

In addition to advancing the Canning Basin coal play TPL’s growth strategy includes reviewing bulk commodity exploration opportunities within both Queensland and Mongolia with priority on coal projects. Apart from mineral exploration activities TPL also manages an on line website based business “Total Hits”.

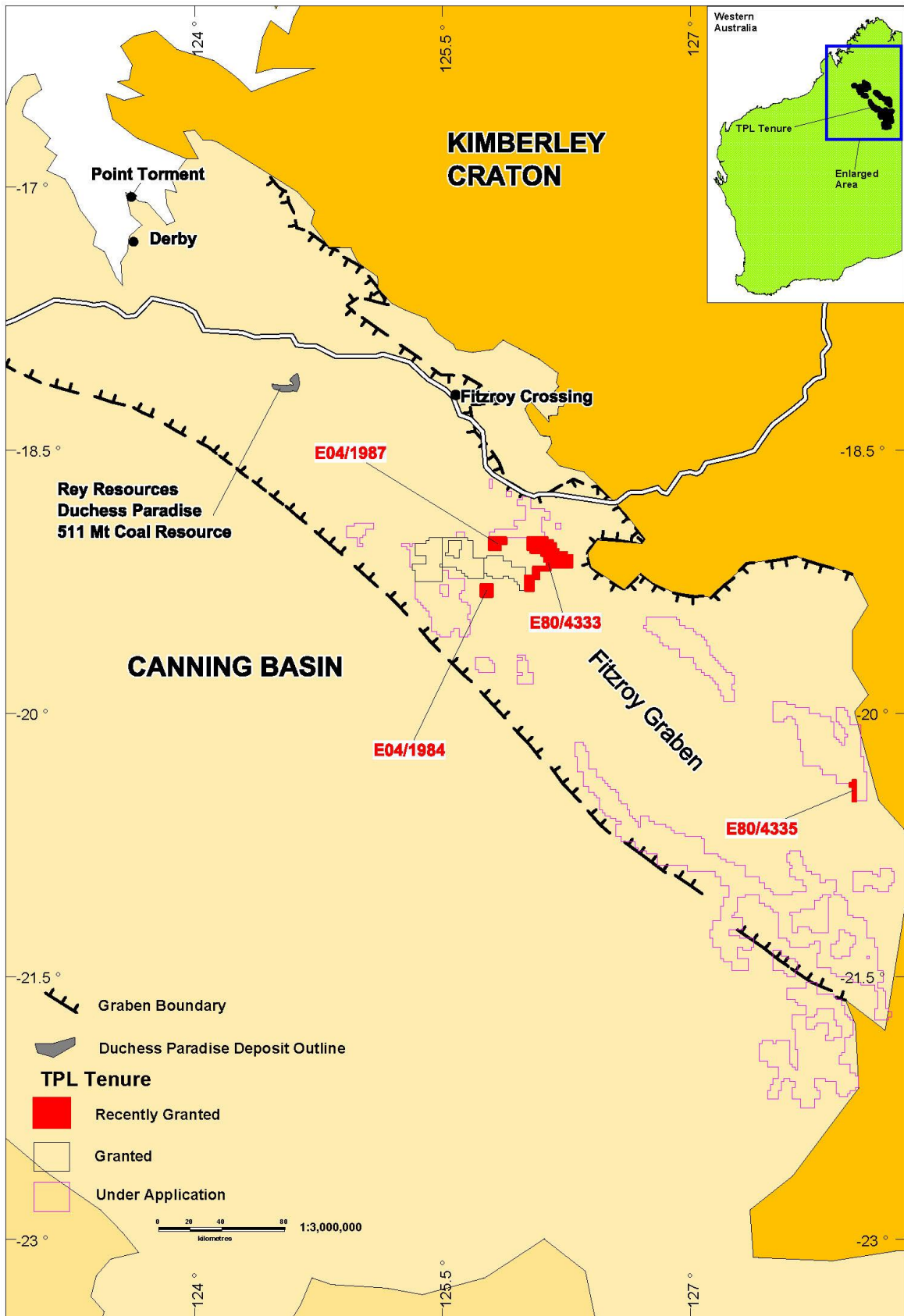


Figure 1: TPL Tenure Status, Highlighting Tenements Granted during Quarter.

CANNING BASIN

The Canning Basin is an emerging Permian Coal Province with its considerable potential confirmed by Rey Resources Ltd with announcements of a 511 Mt thermal coal resource and an exploration target of 9 to 11 Bt (REY ASX Announcement, Jan.2010). REY's project lies within the western end of the Fitzroy Graben. The Fitzroy Graben lies within the northern portion of the Canning Basin and is a deep trough of sedimentary rocks over 100 km wide and up to 15 km in depth. TPL's tenement holding lies in the central and eastern portions of the Graben which is just as prospective but grossly under-explored for coal. The Permian Bowen and Sydney Basins in eastern Australia contain approximately 30 Billion tonnes of coal each.

After receiving positive results from a pre-feasibility study REY has commenced a definitive feasibility study into an initial slot and highwall mining operation producing 2 Mtpa of saleable coal. Production is planned to commence in 2013. Conceptual studies with increased production to 4mtpa and potential underground mining are also underway (REY, ASX Update Nov10).

Initial shipping by REY will be via a barge loading operation out of the Derby wharf. However there is potential for future, significantly larger ship loading facilities with the West Australian Government supportive of the development of a deep water port just north of Derby at Port Torment.

TPL consider that given recent developments and the considerable potential that has already been highlighted, the Canning Basin is strategically located to take advantage of the burgeoning long term demand for thermal coal from both India and China. In comparison to coal exporting ports on the east coast of Australia the Canning Basin is approximately 6 to 9 days closer by ship to these developing fast growing economies.

TPL is seeking to capitalise on its early mover advantage in exploring for coal within the Canning Basin in Western Australia. Currently TPL has a total of 7 granted Exploration Licences with a further 58 under application. In total this tenure cover approximately 14,000 km² over the Fitzroy Graben, containing more than 1,000 km of potential strike over the prospective Lightjack Formation as mapped by government geological surveys.

Desktop Studies

During the quarter desktop studies were advanced by both staff and consultants with geological mapping and previous exploration drilling, having been collated and compiled into the companies database and geographical information system (GIS).

Currently further information is being sourced from water bore data and historical petroleum seismic surveys. Also Geological Consultant Digirock Pty Ltd is near the completion on a review on the properties and characteristics of known coal occurrences within the Canning Basin. Utilising all the above information the company during the next quarter intends to undertake a basin analysis of the Gregory Sub-Basin which lies to the southeast of the Lightjack Hill Project area. The company is optimistic that the Gregory Sub-Basin will prove a favorable depocentre for coal as has the Fitzroy Trough to the west which hosts REY's 511 Mt thermal coal deposit.

Heritage and Native Title

TPL is currently in negotiations for an Access and Heritage Protection Agreement with the representative body (i.e. Kimberley Land Council (KLC)) for the Ngurrara Native Title Group. The Ngurrara group includes traditional owners with a claim that covers part of the company's Lightjack Hill Project area.

Negotiations are progressing well with agreement reached on many clauses within the agreement. The company is hopeful of soon concluding negotiations with the Ngurrara group.

TPL's Canning Basin tenure lie within the claim areas of five different Traditional Owner groups. However the KLC is the representative body for all groups thus the company is hopeful all subsequent negotiations should be expedient once an initial agreement is finalized.

Lightjack Hill Project

Late in the quarter a further four 100% owned exploration licences (i.e. E04/1984 & 1987 and E80/4333 & 4335) within the prospective Canning Basin were granted, increasing TPL's granted tenure within the emerging coal province by 70 percent to a total holding of 1256 km² (ASX, Jan11). Three of the newly granted tenements fall within the Lightjack Hill Project (Figure 2). TPL's granted holding within this prospective project area has now increased from 724 km² to 1230 km². The further granting of tenure will allow TPL to proceed with on-ground exploration during the coming field season. Seasonal tropical weather in the northwest of Western Australia nominally restricts exploration field work in the region to between April and November, depending on the start and finish of the cyclone season.

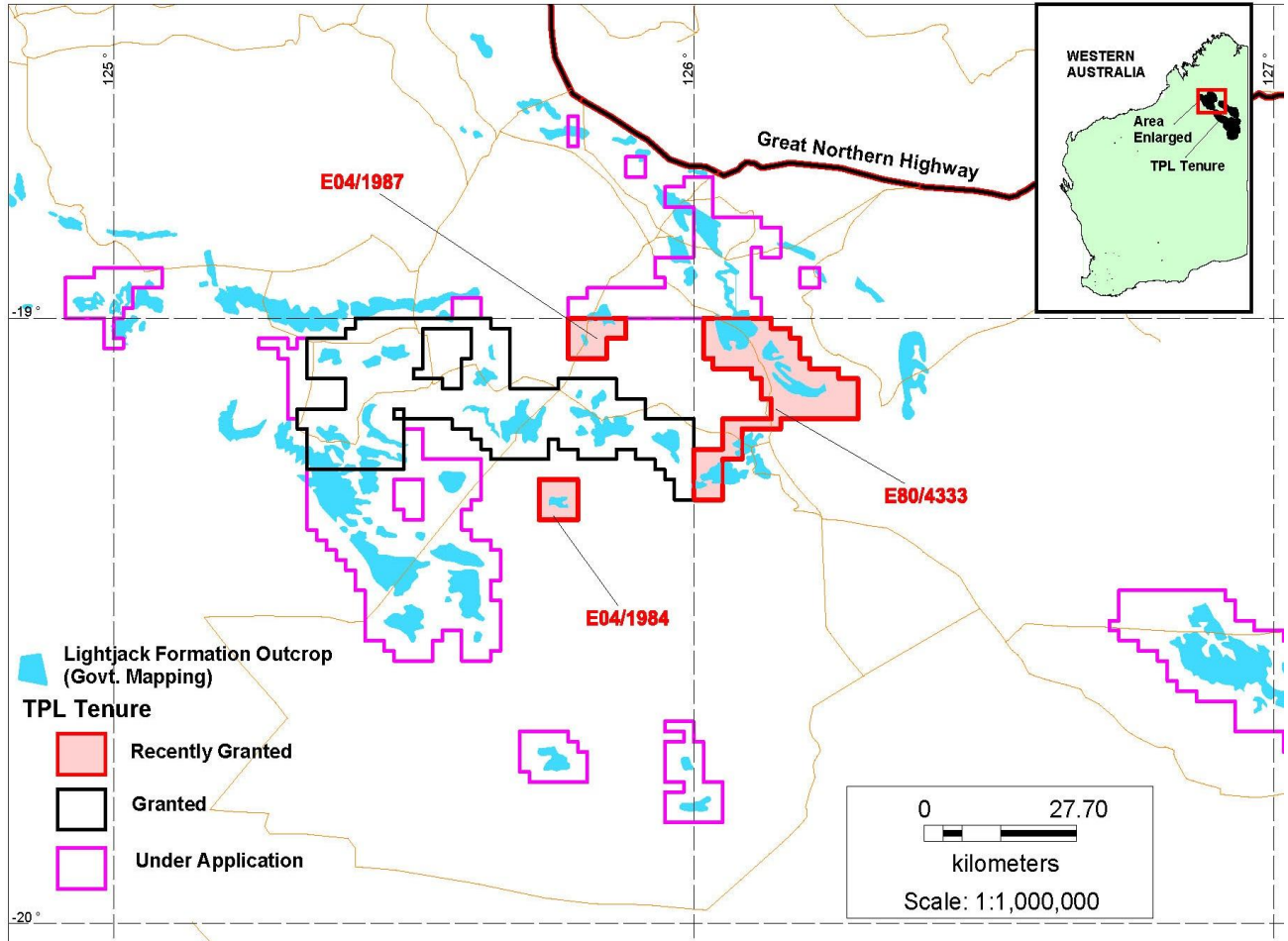


Figure 2: Newly Granted Exploration Licences within the Lightjack Hill Project Area.

The fourth new tenement E80/4335 lies several hundred kilometres to the southeast of the Lightjack Hill Project. This tenement lies in the eastern end of the sparsely explored Gregory Sub-Basin. TPL is currently pursuing the required agreements, permits and Ministerial consent to explore in this area which falls within an Aboriginal Reserve (Figure 1).

Map compilation and reporting was finalized on geological mapping completed by consultant geologist Dr Joseph Drake-Brockman of Drake-Brockman Geoinfo Pty Ltd. Mapping was completed over TPL's initial three granted tenements within the Lightjack Hill Project area (ASX, Dec10). Project scale geological mapping at 1:20,000 scale has defined initial drill targets based on the delineation of the boundaries and geometry of the prospective Lightjack Formation and identification of a potential coal-bearing horizon within this formation (Figures 3 & 4).

GROWTH STRATEGY

This quarter in addition to pursuing potential growth in shareholder value through the advancement of the company's Canning Basin coal project TPL has commenced reviewing other bulk commodity exploration projects. The company is currently pursuing and reviewing coal exploration & resource development projects within prospective coal basins in Queensland and Mongolia. TPL's board considers that the frontier coal basins such as the Galilee in Queensland and those in Mongolia are grossly under explored world class coal provinces and offer enormous potential leverage.

TOTAL HITS

During the quarter Total Hits' current marketing campaign progressed to near completion. A CD featuring local artists that perform in the café / restaurant scene was released just subsequent to the end of the quarter at the beginning of January. The CD has been distributed to over 2,000 cafes and restaurants in WA and has received very strong support. Traffic to the web site has gone up as a result and we expect this to now rise steadily over the next year. The success of the CD has left us optimistic about the potential of future similar projects.

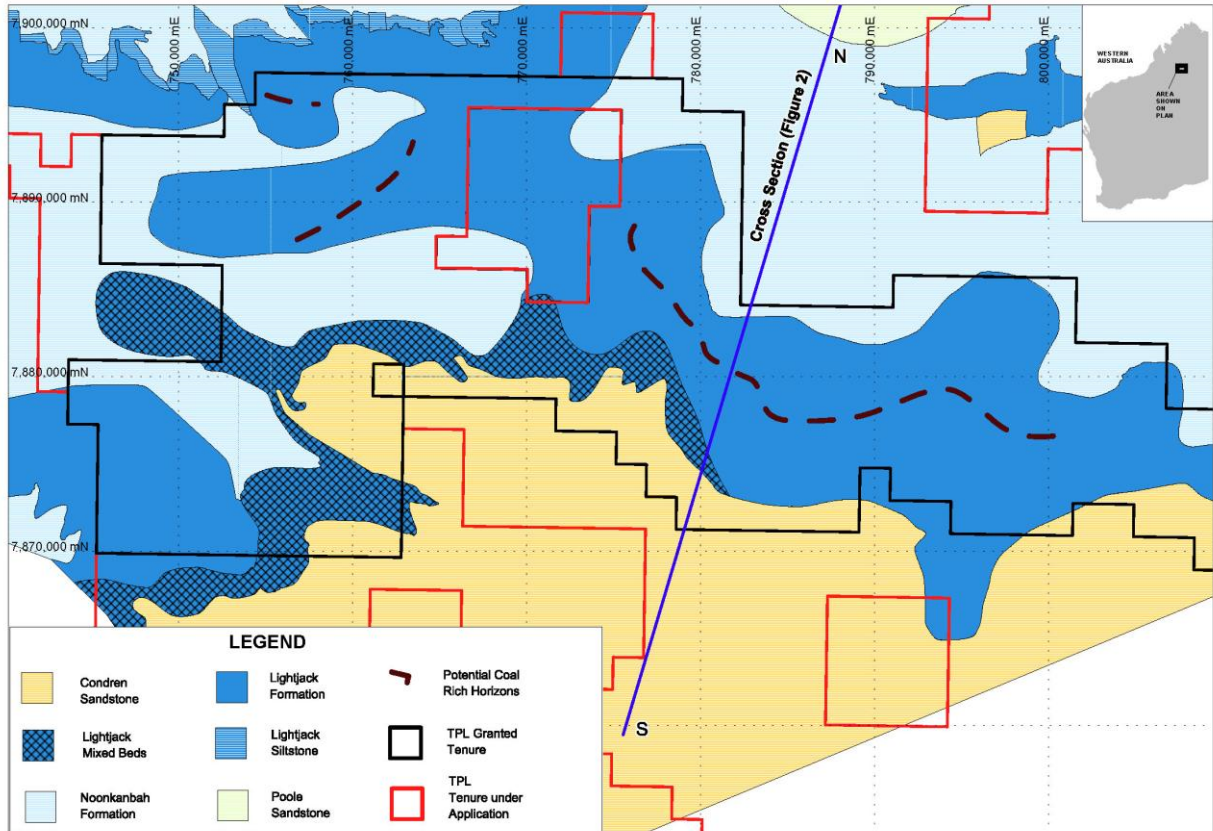


Figure 3: Geological Map of Initial Granted Tenure, Lightjack Hill Project.

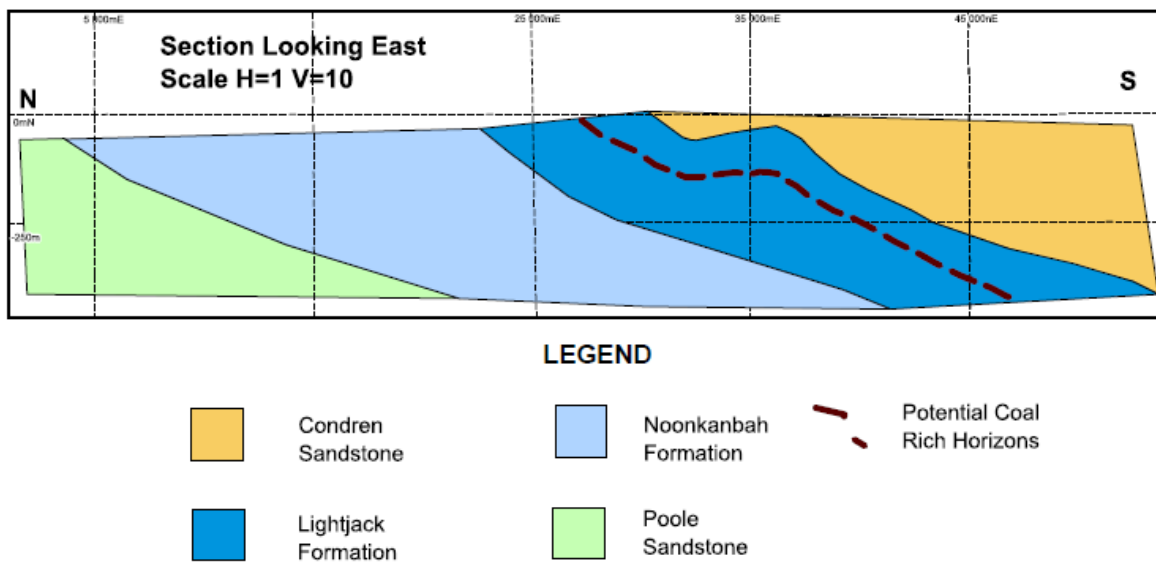


Figure 4: Schematic Geological Section through centre of Lightjack Hill Mapping.

PLANS FOR COMING QUARTER

- Collate and review water bore and historical petroleum seismic survey data pertinent to TPL's Canning Basin landholding.
- Finalise review of the properties and characteristics of known coal occurrences within the Canning Basin.
- Commence Basin analysis of the Gregory Sub-Basin within the northeast portion of the Canning Basin.
- Further progress negotiations on Exploration Access and Heritage Protection Agreements covering the Canning basin.
- Ongoing review of exploration opportunities within Queensland and Mongolia with aim of acquiring an additional quality asset.
- Increase patronage of "Total Hits" website and continue circulation of CD.

For further information please contact

Mark Gunther, Managing Director

Hugh Warner, Chairman

Tel: (08) 92173300

Competent Person Statement

The information in this report that relates to Exploration Results is based on information compiled by Mr Mark Gunther who is a full time employee of TPL Corporation Limited and a Member of the Australian Institute of Geoscientists. Mr Gunther has sufficient experience which is relevant to the style of mineralisation and types of deposits under consideration, and to the activity which has been undertaken, to qualify as a Competent Person as defined by the 2004 edition of the "Australasian Code for Reporting of Exploration Results, Mineral Resources and Ore Reserves". Mr Gunther consents to the report being issued in the form and context in which it appears.

Exploration Target

Any discussion in relation to an exploration target is only conceptual in nature, as there has been insufficient exploration to define a Mineral Resource and it is uncertain if further exploration will result in the determination of further Mineral Resources.