



EXPLORATION UPDATE

Highlights

- **Two new mineralisation trends defined:**
 - **New gold intersections at Jundee South Gold Prospect**
 - **Nickel Copper gossan material intersected at Steeple Hill Prospect**
- **Preliminary CSIRO Fluid Flow Report identifies areas of interest for RAB drilling**
- **Twin Hills PoW submitted**

Growing Western Australian gold explorer, Aruma Resources Limited (ASX: AAJ) is pleased to provide an update on the Company's exploration programs, including the identification of two new mineralised zones on its tenements.

Significant anomalous gold intercepts have been returned from Aruma's **Jundee South Project** located 60km east of Wiluna on the Jundee-Gourdis-Bronzewing trend in the Eastern Goldfields region; and anomalous nickel and copper results have been reported at the Company's **Steeple Hill Prospect** at the Kurnalpi South Project within the Glandore Hub.

Managing Director, Peter Schwann said "the **Jundee South Project** assays show two carbonate quartz alteration systems with the southern area over 1.6 km long with mineralisation up to 16m thick. The northern area is over 200m long and up to 12m thick. The anomalous intersections included 4m at 2.06 g/t Au in Hole JS22 from 16m". (Full results in Tables 2 and 3 below).

"The anomalous drilling results will be followed up after the 4m composites are re-assayed for 1m splits to better define the mineralisation," Mr Schwann said.

Assays from the **Steeple Hill Prospect** returned 3m at 0.21% Cu and 0.21% Ni from 11m in HPRB 23. The high copper values suggest this is a gossan rather than a lateritic nickel anomaly. Surface mapping also defined a gossanous outcrop near this drill hole.

This gossanous zone is near the contact of the ultramafic as indicated by mapping and magnetics and the possible high value NiS-CuS zone will be further investigated in the coming Quarter.



EXPLORATION UPDATE

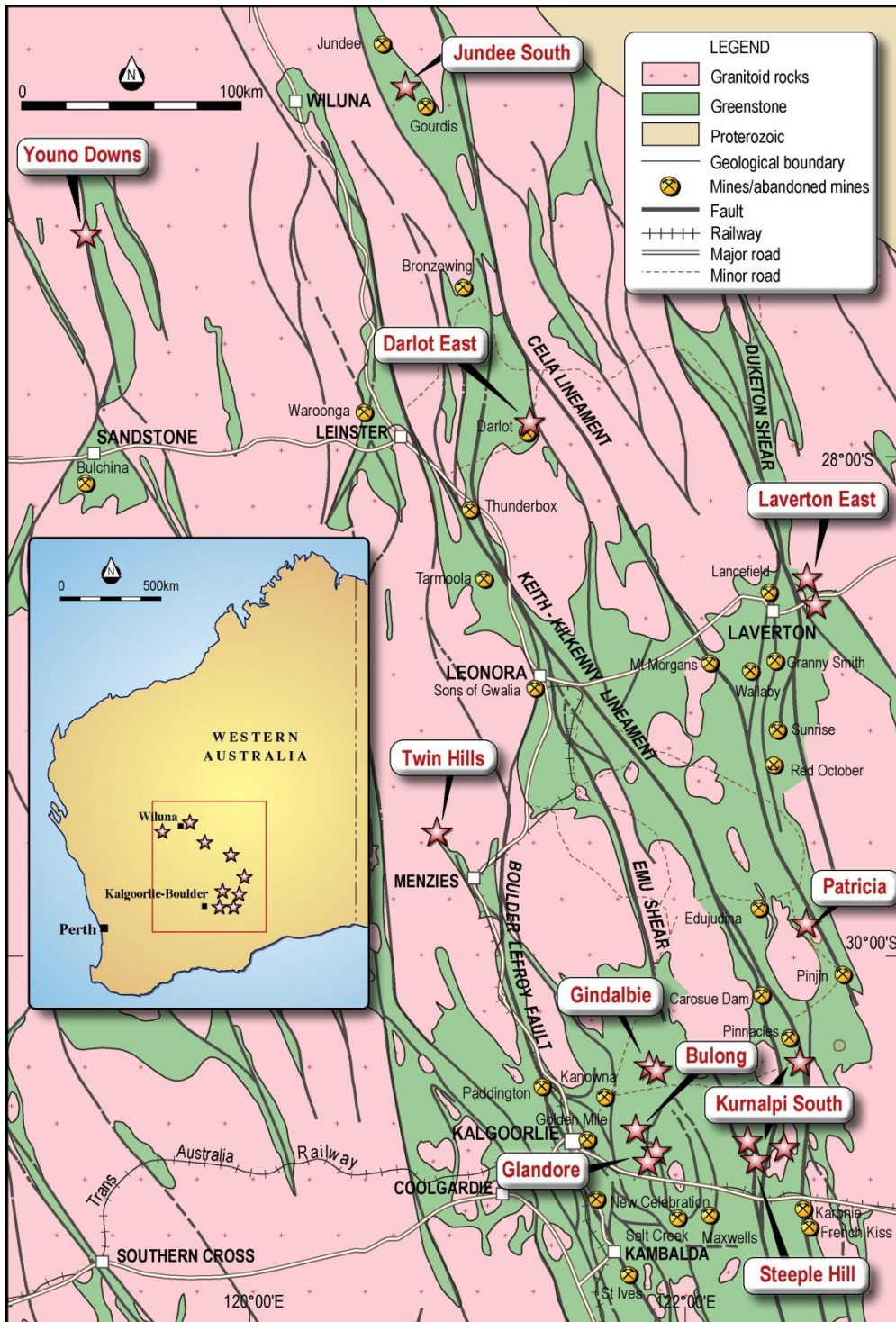


Figure 1 Aruma Resources' project locations

Aruma Resources Limited

ABN 77 141 335 364 ASX: AAJ
Suite 33, 18 Stirling Highway, Nedlands WA 6009
Locked Bag 2000, Nedlands WA 6909, Australia
T +61 8 6389 1799 | F +61 8 6389 0112 | W www.arumaresources.com



EXPLORATION UPDATE

DISCUSSION OF RESULTS

Jundee South Project

The initial assay results at the Jundee South Project are significant in both extent and tenor. This area was drilled to investigate low level soil anomalies of 0.1 to 0.4 g/t values and the results suggest that the western anomaly is a WNW stratigraphic zone and the eastern larger anomaly is on a major NNE lineament. Covering two areas some 4 km apart the results indicate that extensive mineralised zones defined by structure and alteration lie completely covered by varying depths (5 to 25m) of tertiary cover. All the intersections showed carbonate (limonitic) alteration in mafics (with iron and silica).

Hole	Easting	Northing	From	To	Interval	g/t Au	Zone
JSR2	275350	7062500	8	12	4	0.17	South
JSR14	275900	7064000	24	28	4	0.11	South
JSR14	275900	7064000	32	36	4	0.39	South
JSR14	275900	7064000	36	40	4	0.57	South
JSR17	276000	7064100	24	28	4	0.25	South
JSR22	273000	7064900	24	28	4	2.06	North
JSR23	273000	7065000	12	16	4	0.46	North
JSR23	273000	7065000	16	20	4	0.4	North
JSR23	273000	7065000	20	24	4	0.2	North

Hole	Easting	Northing	From	To	Interval	g/t Au	Zone
JSR2	275350	7062500	8	12	4	0.17	South
JSR14	275900	7064000	24	40	16	0.28	South
JSR17	276000	7064100	24	28	4	0.25	South
JSR22	273000	7064900	24	28	4	2.06	North
JSR23	273000	7065000	12	24	12	0.35	North

The 1m splits have been taken and at time of writing have been submitted for assay. An extension to the current PoW has also been applied for to do follow up drilling.

The locations of the anomalies are shown below in Figure 2.

Aruma Resources Limited

ABN 77 141 335 364 ASX: AAJ

Suite 33, 18 Stirling Highway, Nedlands WA 6009

Locked Bag 2000, Nedlands WA 6909, Australia

T +61 8 6389 1799 | F +61 8 6389 0112 | W www.arumaresources.com

EXPLORATION UPDATE

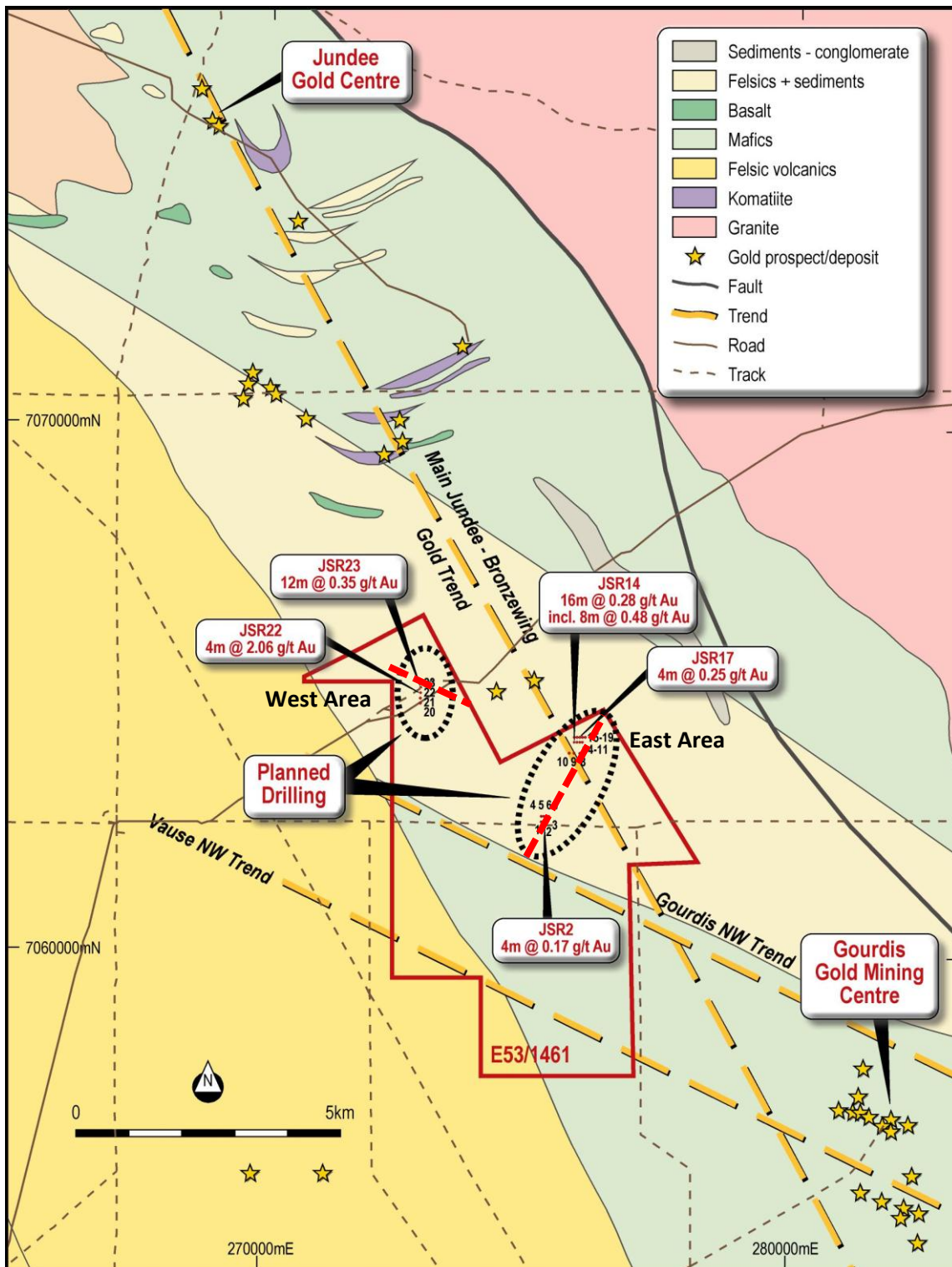


Figure 2 Latest drilling results on the geology at Jundee South showing East and West areas



EXPLORATION UPDATE

Steeple Hill Prospect

After an airborne Hyvista spectral survey in 2010, a review of the project exploration data was completed and a 61 hole RAB program was designed to test a discrete gold in soil anomaly trending near perpendicular to the main Avoca shear in the lower southern part of the lease.

Results from the 2011 drilling (better than 0.1g/t Au) of the 2,020m RAB program are detailed below and shown in Table 3.

Table 3: Assay results for Steeple Hill

Hole	Easting	Northing	From	To	Interval	g/t Au
HPRB 28	430750	6592002	35	36	1	0.11
HPRB 39	430000	6591399	1	2	1	0.11

Hole	Easting	Northing	From	To	Interval	Cu%	Ni%
HPRB 23	430500	6591998	11	14	3	0.21	0.21

The results show a 3 metre intersection of anomalous Ni and coincident Cu in Hole HPRB 23 as well as a 0.07% Cu and 0.14%Ni bottom of hole anomaly (25-26m) .

The pulps for the hole HPRB23 are being assayed for a multi element suite including manganese and other base metals and platinoids to determine if this is a gossan over a sulphide target, or enrichment in the weathered profile.

The results of the drilling with respect to gold demonstrate make the tenement of lower priority in the short term

Figure 3 shows the locations of the drilling program.

EXPLORATION UPDATE

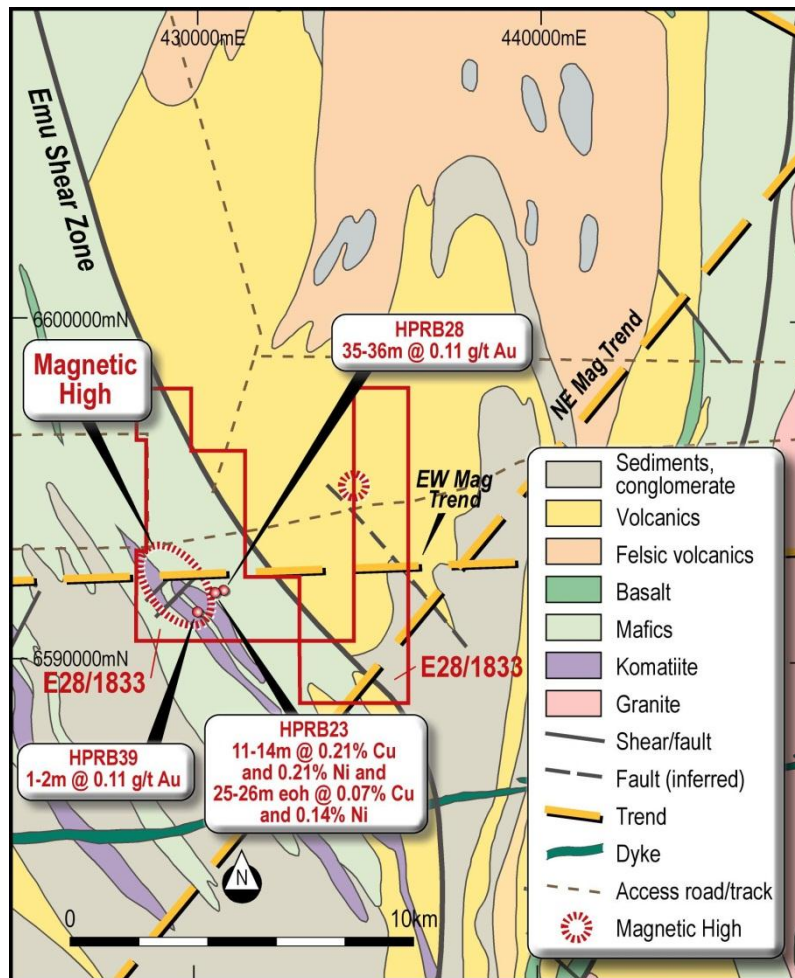
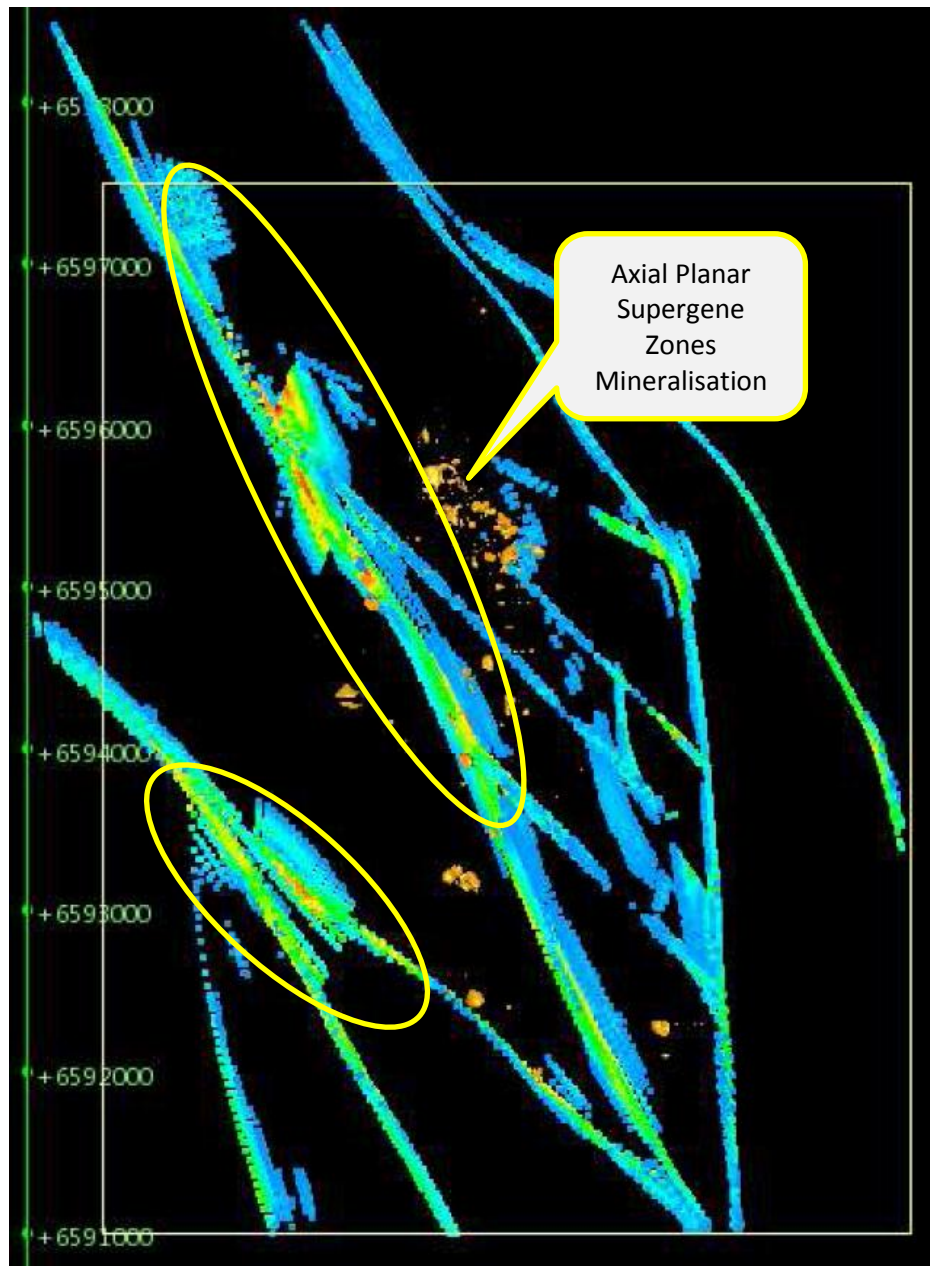


Figure 3 Steeple Hill Results on geology

Glandore Fluid Flow Modelling

The diagram below shows the areas of Fluid Flow from the draft CSIRO Report and this will be finalised in February for drilling soon after. The areas circled are of interest as defined by the CSIRO modelling and will be RAB Drilled for bedrock alteration. The anomalies are over 4km and 2km in length, making them high order targets.

EXPLORATION UPDATE



**Figure 4 Preliminary targets (Yellow Ellipses) at Glandore
from CSIRO Fluid Flow Study**

The major anomalies generated are on the mainland adjacent to the lake areas and are not drilled to date. This opens a new phase of exploration at Glandore with targets generated by new techniques.

It should be noted that the new areas are outside the known mineralisation areas (yellow solids on the Figure 4 above) and the final Report should fully define all the anomalous areas.

Aruma Resources Limited

ABN 77 141 335 364 ASX: AAJ
Suite 33, 18 Stirling Highway, Nedlands WA 6009
Locked Bag 2000, Nedlands WA 6909, Australia
T +61 8 6389 1799 | F +61 8 6389 0112 | W www.arumaresources.com



EXPLORATION UPDATE

Laverton East Prospect

After an airborne Hyvista spectral survey, a review of the project exploration data was completed and an angled RAB program was designed to test a discrete Hyvista anomaly that occurred on the eastern side of the ultramafic adjacent to and on the ultramafic/felsic contact. The program was also designed to give some regional data near the areas of anomalous rock chip samples.

Results of the first phase drilling (better than 0.1g/t Au) were encouraging with a best result of 1 metre at 7.33 g/t in hole LEAC31 from 16 metres. Results better than 0.1g/t Au are listed in the following Tables.

Hole ID	Easting	Northing	From	Thickness	Au g/t	Angle/Azimuth	Comment
LEAC31	460776	6836876	7	1	0.33	-60°/245°	
and			15	2	4.75		
and			22	1	0.2		

Hole ID	Easting	Northing	From	Thickness	Au g/t	Angle/Azimuth	Comment
LEAC100	460790	6836886	20	1	0.14	-60°/240°	drilled under LEAC31
and			50	2	0.16		drilled under LEAC31
LEAC79	459865	6838093	55	1	0.15	-60°/250°	
LEAC94	460201	6837407	28	1	0.16	-60°/240°	
LEAC85	459327	6838093	20	1	0.25	-60°/235°	

All of the anomalous results occur in the adamellite usually near to the ultramafic contact. The results of the drilling make the tenement a lower rank target in the short term.

Aruma Resources Limited

ABN 77 141 335 364 ASX: AAJ
Suite 33, 18 Stirling Highway, Nedlands WA 6009
Locked Bag 2000, Nedlands WA 6909, Australia
T +61 8 6389 1799 | F +61 8 6389 0112 | W www.arumaresources.com

EXPLORATION UPDATE

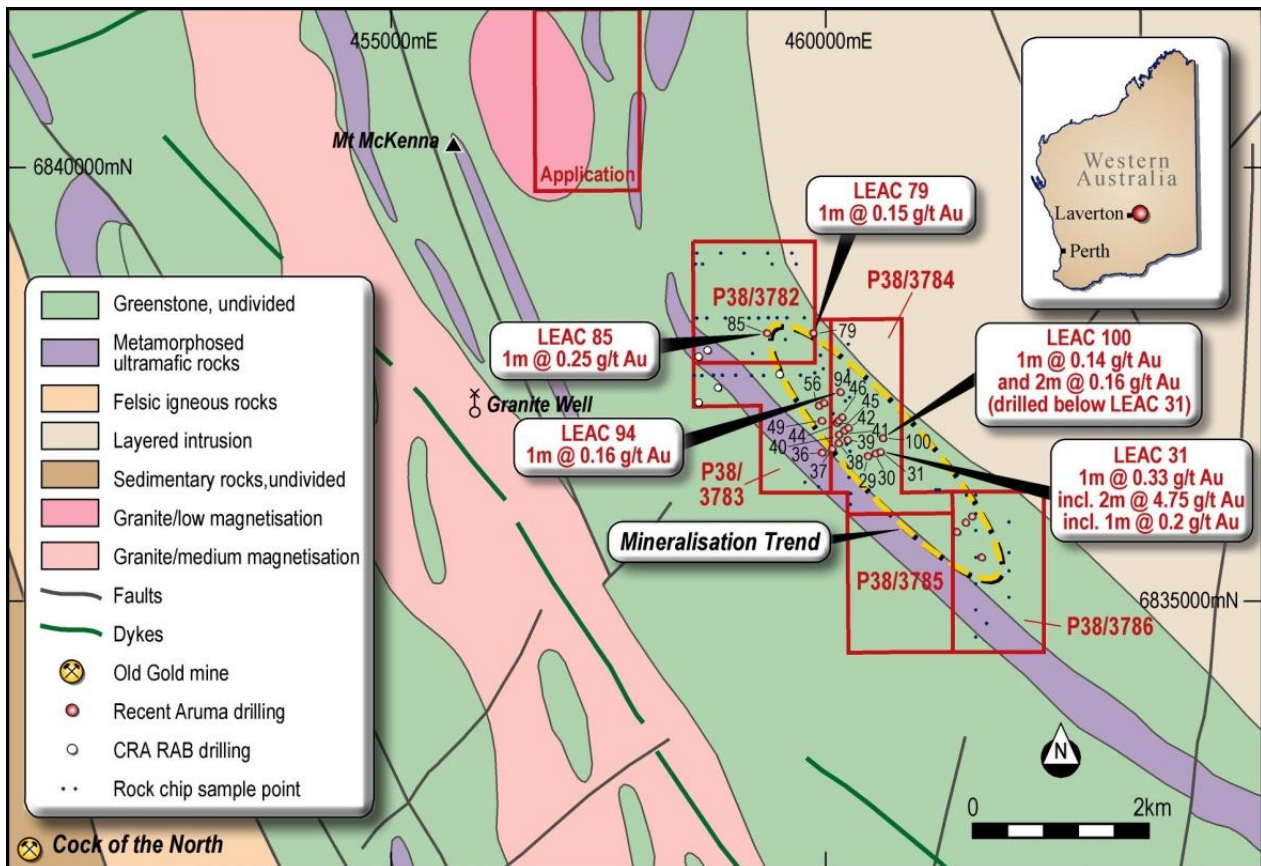


Figure 5 Laverton East drilling results shown on Geology

TWIN HILLS

As previously announced Aruma have completed the agreement to acquire two new lease areas in WA's prolific eastern Goldfields region, providing an opportunity to acquire a highly prospective landholding in the Menzies district - an established gold-producing province on the historical gold-producing Moriarty Shear - as well as mineralised zones adjacent to its own Gindalbie Leases.

The PoW for a first pass drilling campaign has been submitted and site access and drilling is expected to be undertaken this Quarter. The areas to be drilled are fully accessible with cleared drill lines ready for the currently programmed drilling.

The Gindalbie Lease (which was included in the same agreement) has been flown with Hyvista and will be interpreted by Aruma and Hyvista staff in late January. The PoW has been prepared and is to be submitted next week.

Aruma Resources Limited



EXPLORATION UPDATE

ARUMA PROJECTS PROGRESS

- PoW for Twin Hills North submitted to DMP
- Steeple Hill, Laverton East and Jundee South assays received
- Jundee South 1m splits submitted for assay
- Hyvista Surveys being Interpreted
- The Fluid Flow Study at Glandore draft report received and drilling areas recommended
- PoWs for Gindalbie and Glandore completed
- Company well-funded for the exciting exploration year

ENDS

For further information please contact:

Peter Schwann
Managing Director
Aruma Resources Limited
Ph: +61 8 6389 1799, Mobile: +61 417 946 370
info@arumaresources.com

Media enquires:

Annette Ellis
Purple Communications
Ph: +61 8 6314 6300

Competent Person's Statement

The information in this release that relates to Exploration Results, Mineral Resources or Ore Reserves is based on information compiled by Peter Schwann who is a Fellow of the Australasian Institute of Mining and Metallurgy and Chartered Professional (Geology). Mr Schwann is an employee of the Company.

Mr Schwann has sufficient relevant experience to qualify as a Competent Person as defined in the JORC Code (2004) and consents to the inclusion of this information in the form and context in which it appears.

Aruma Resources Limited

ABN 77 141 335 364 ASX: AAJ
Suite 33, 18 Stirling Highway, Nedlands WA 6009
Locked Bag 2000, Nedlands WA 6909, Australia
T +61 8 6389 1799 | F +61 8 6389 0112 | W www.arumaresources.com