



---

## QUARTERLY ACTIVITIES STATEMENT

For the quarter ending 30 September 2012

### HIGHLIGHTS

- **Glandore Project**
  - Completed Glandore Heritage Survey on the western Fluid Flow anomalies
  - Glandore Heritage Survey planned on the eastern area
  
- **Glandore Regional Hub**
  - Gindalbie Heritage Clearance completed
  - HyVista Survey interpretation reveals anomalies
  - Drilling planned on several sites
  - Steeple Hill drill sites rehabilitated
  
- **Jundee South Project**
  - Second Phase drilling of 615m completed and hits 4m at 9.62g/t Au
  - Extension drilling planned of 900m of RAB drilling at Jundee South
  
- **Twin Hills Project**
  - 700m of RC drilling completed and Assays show limited potential
  
- **Gindalbie Project**
  - HyVista Survey interpretation reveals anomalies
  - RAB drilling booked
  
- **Regional Exploration**
  - Darlot Leases dropped after drilling



## EXPLORATION ACTIVITIES

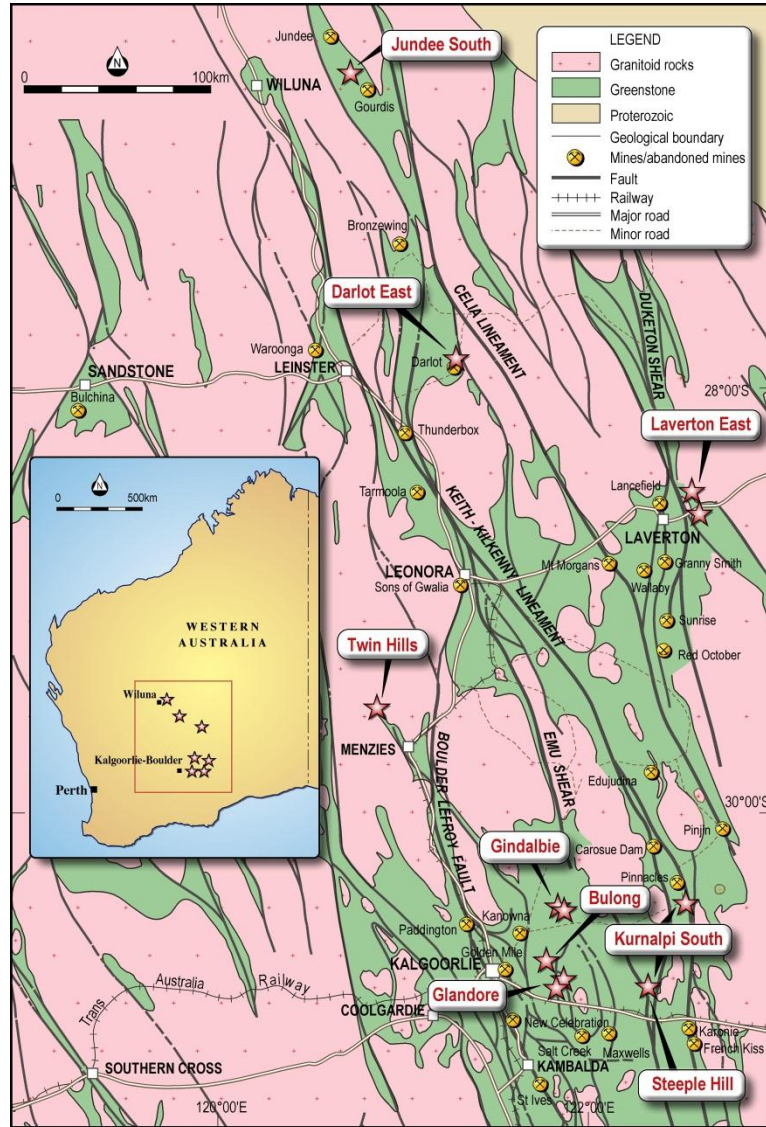


Figure 1 Aruma Exploration Areas in Western Australia

Aruma Resources Limited ("Aruma") has three advanced gold exploration projects, **Glandore**, **Jundee South**, and **Gindalbie**; located near proven gold producing centres of the Eastern Goldfields of Western Australia, which is considered to be both highly prospective for gold as well as highly amenable for the development and exploitation of new deposits. The next quarter's exploration program has been designed to prioritise scheduled drilling of these defined targets.

The Company is committed to its strategy of efficient exploration to confirm or disprove potential targets, with a view to developing a gold production hub centred on its flagship Glandore Project.

### Aruma Resources Limited

ABN 77 141 335 364 ASX: AAJ  
Suite 33, 18 Stirling Highway, Nedlands WA 6009  
Locked Bag 2000, Nedlands WA 6909, Australia  
T+61 8 6389 1799 | F+61 8 6389 0112 | Wwww.arumaresources.com



**QUARTERLY ACTIVITIES STATEMENT  
FOR THE QUARTER ENDING 30 SEPTEMBER 2012**

<b>EASTERN GOLDFIELDS</b>	<b>Glandore Hub</b>	Glandore Project - 40km east of Kalgoorlie-Boulder Status - Ready to drill on Western Leases, Eastern Leases Exploration in discussion with traditional owners
		Gindalbie Project - 60km north-east of Kalgoorlie-Boulder Status – Flown with HyVista and PoW approved ready to drill
		Bulong Project - 30 km east of Kalgoorlie-Boulder Status – Awaiting grant and data base assembled
	<b>Regional Projects</b>	Twin Hills Project - The Twin Hills belt 25 km north of Menzies Status – RC done and future will be decided
		Jundee South Project - 20km south of Jundee Mine Status - Second Pass RAB drilling hits 9.62 g/t Au over 4m
		Laverton East Project - 20km east of Laverton Status - Paul Well (Northern) Lease has multiple HyVista Targets

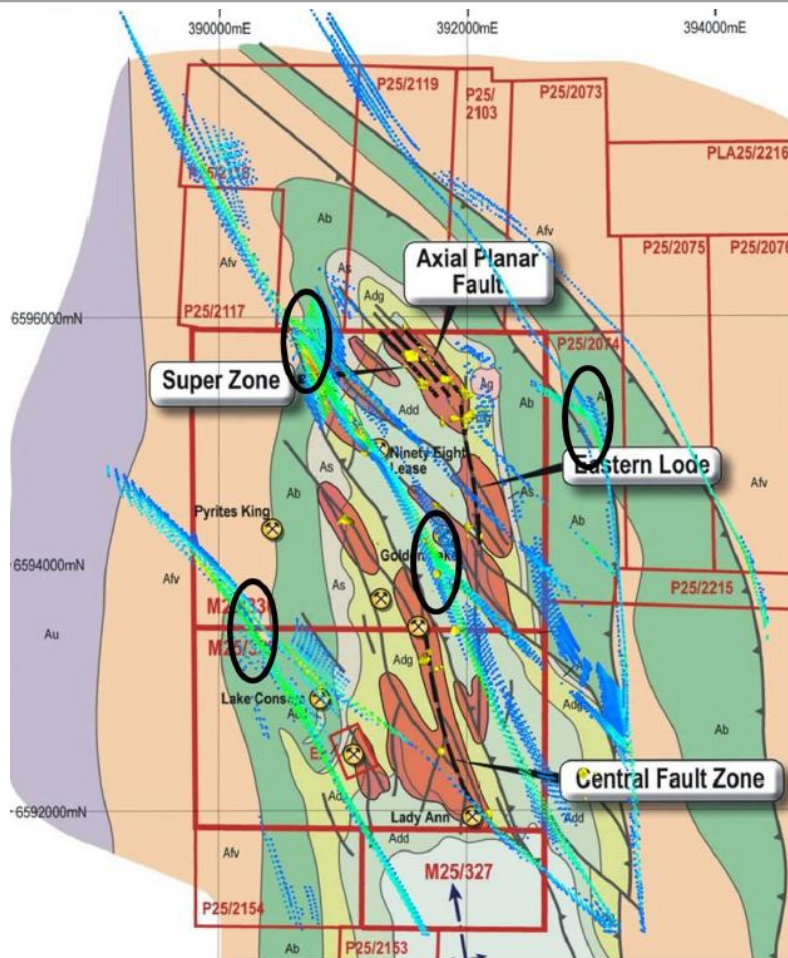
**TABLE 1 ARUMA LEASES**

**Glandore Project**

Glandore Project is located approximately 40km east of Kalgoorlie-Boulder. After 18 months of scientific study using HyVista, Fluid Flow Modelling, PIMA Analysis and magnetics, the Western Area has been cleared for drilling, and this will occur in the coming quarter

This drilling will investigate the anomalies seen in the Figures 2 and 3 below.

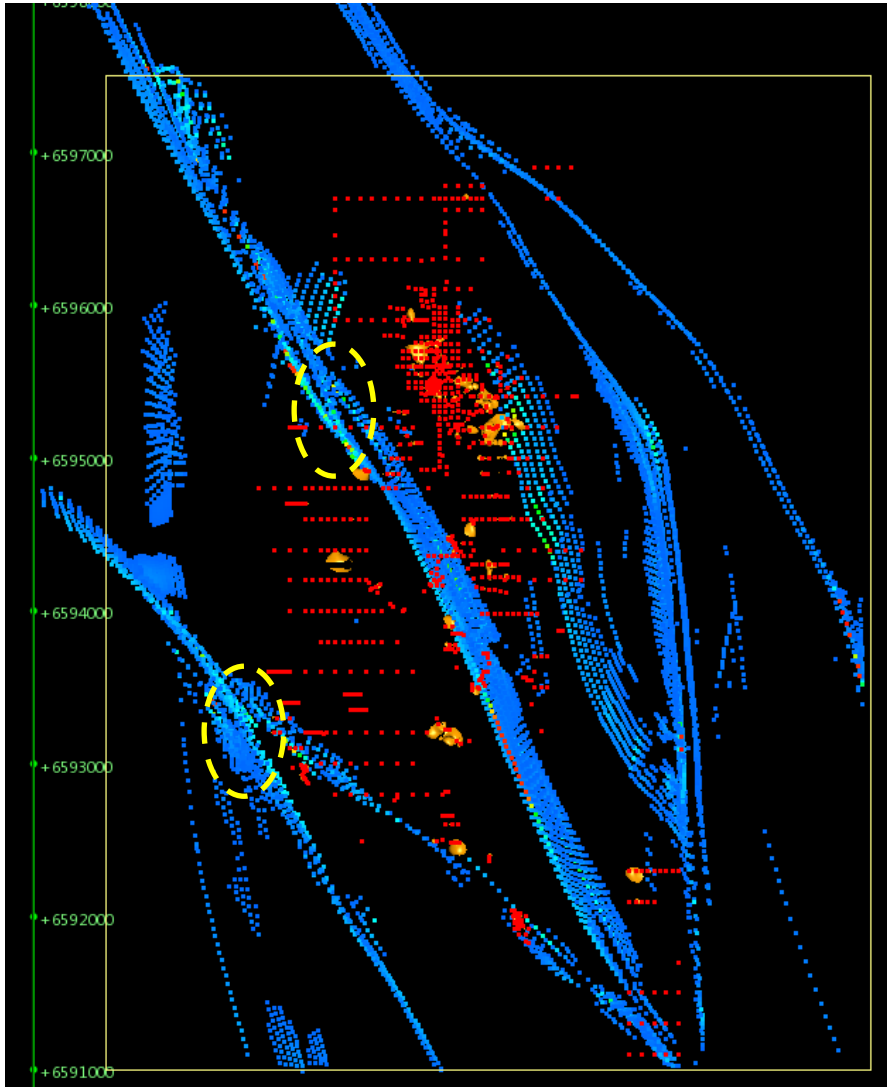
**Aruma Resources Limited**



**Figure 2 Glandore Geology and Tenements with Fluid Flow Targets**

The composite Figure 2 above shows the leases at Glandore with geology, the Fluid Flow Modelling and targets generated. The initial investigation will be in the western half of the tenements and the Figure 2 below shows the undrilled anomalies. Previous drilling was focused on the Axial Planar and Super Zones.

These zones are significant in demonstrating that the mineralising system at Glandore is strong and capable of high-grade thick zones, albeit of limited extent to date. The Fluid Flow modelling was carried out to locate areas where this mineralising system would be capable of creating large continuous zones.



**Figure 3** Plan of Fluid Flow relative to known mineralisation (yellow spheres) and existing drill holes (red dots). The Western Targets are shown in Yellow.

The target zones above are some 800m long and will be tested to bedrock in the coming programs. The previous exploration at Glandore produced intersections up to 11m and grades up to 10g/t as previously reported.

The Glandore leases are considered the area of best opportunity to define economic mineralisation, and will be a priority of the coming year's activities.

## Glandore Hub Project

The Glandore Hub Project is located in a 60km radius of the Glandore Project. The possibility of Satellite projects within easy trucking distance is a policy common to many successful producers (such as Integra, Silver Lake and Saracen) in the area.

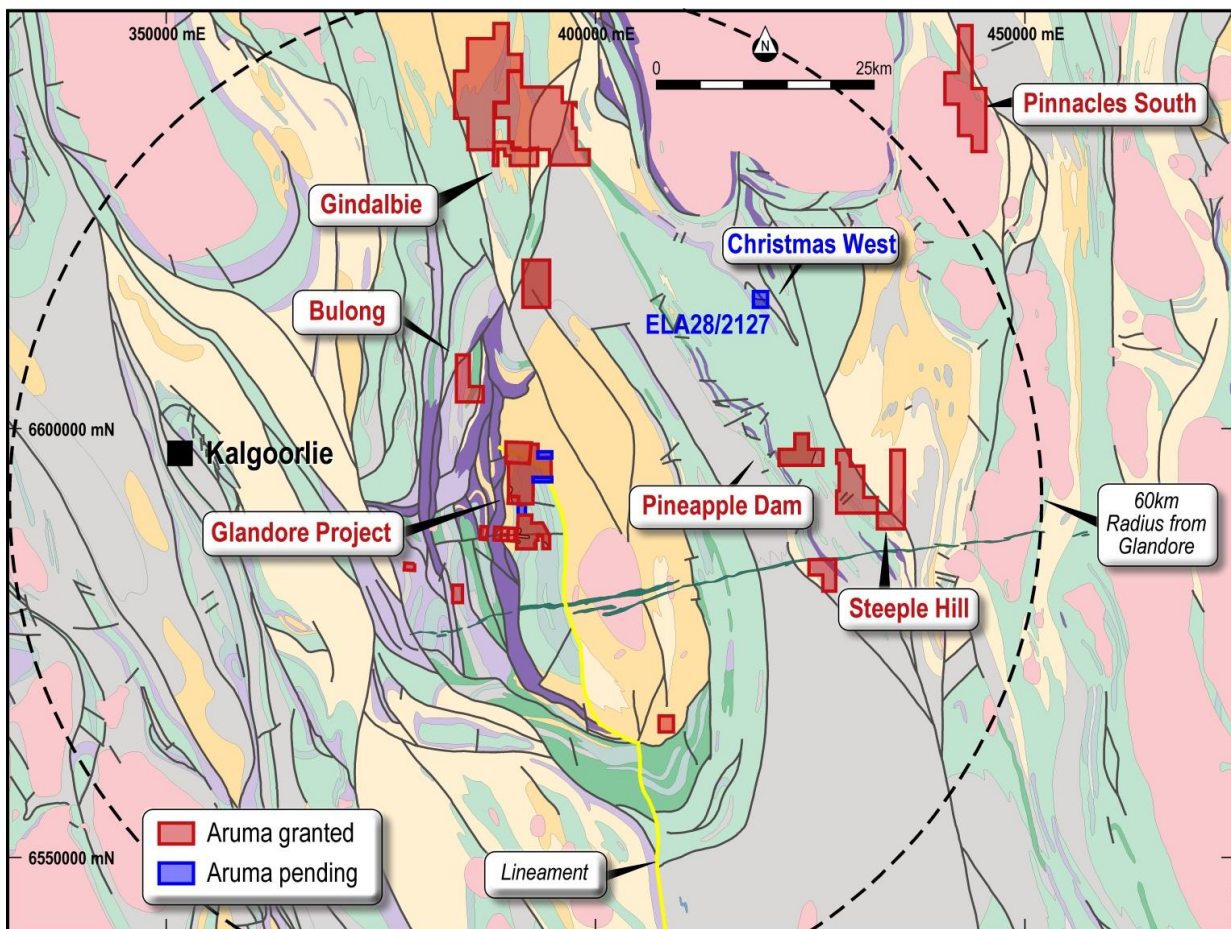


Figure 4 Glandore Hub current leases

The leases that are advanced are Glandore and Gindalbie and the other leases are being pushed with interesting anomalies in historical data being found at Bulong and the South-West PLs below Glandore.

## Jundee South Project

Jundee South is located 60km east of Wiluna and some 25km south of the Jundee Mine. The results from the drilling at Jundee South are very encouraging with thick gold mineralisation and values up to 4m at 9.62g/t in hole JSR34. This hole was mineralised from 4m to 52m and the intersection was 48m at 1.47g/t. All the assays are on 4m composites and assayed by Fire Assay.

In August 2012, a RAB program was completed totalling 614 m in 16 vertical holes on the Western (14 holes) and Eastern (2 holes) areas to follow up a previously reported 18.6g/t intersection in JSR 22 and a 1.36g/t intersection in JSR17. The mineralisation was discovered after following up soil anomalies that had not been drilled previously.

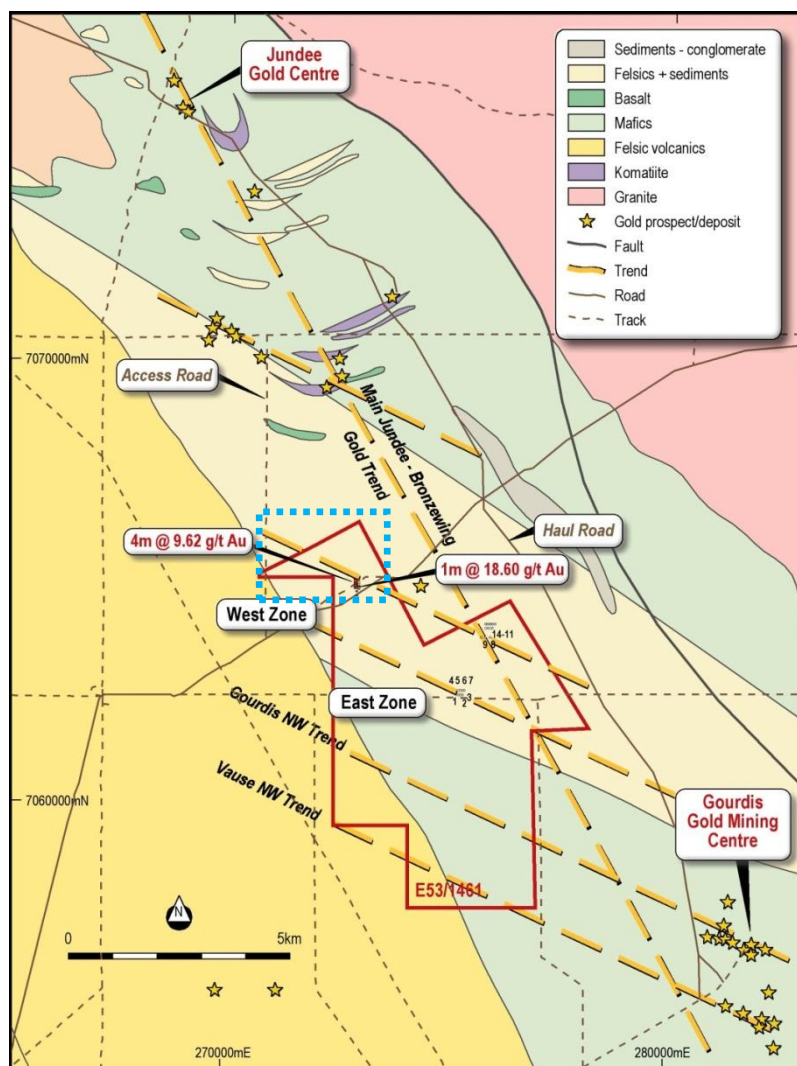
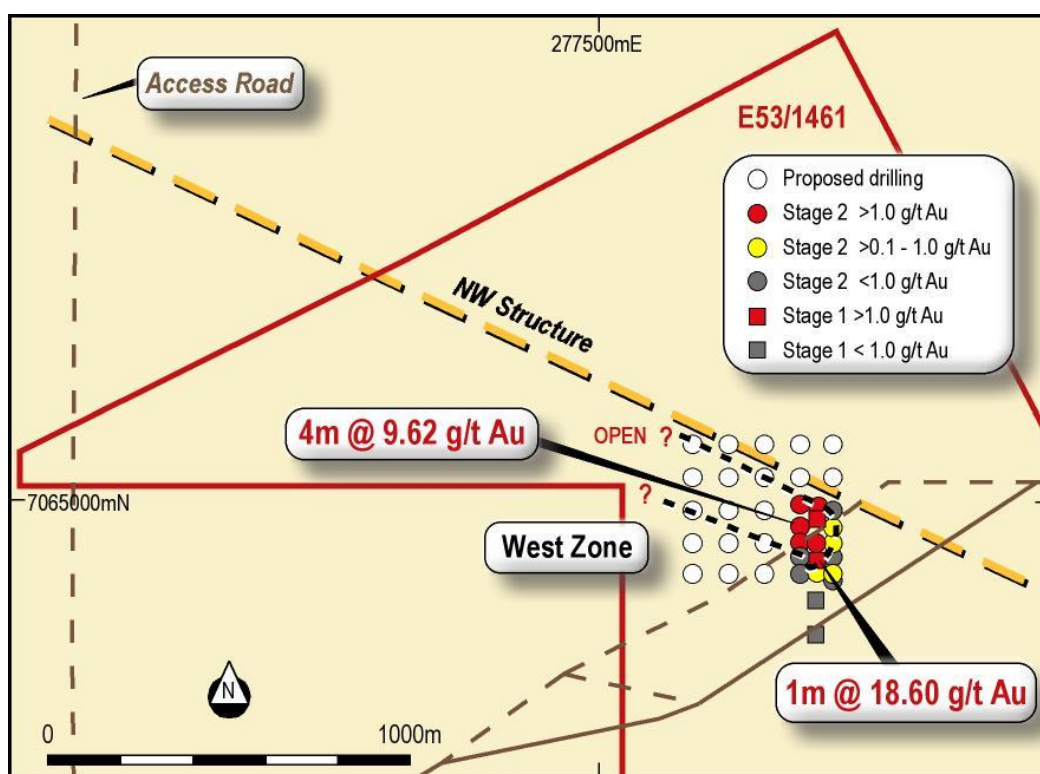


Figure 5 Drilling Location Plan on Geology with Figure 6 area (Enlargement) shown

The significance of the recent results are the shallow depths (from 4m), thickness (>48m to end of hole), high grades (4m at 9.62g/t) in JSR 34 and it is open to the west. Hole JSR34 was mineralised from 4m to 52m (EOH) and the intersection was 48m at 1.47g/t. The mineralisation is in weathered mafics with minor quartz veins and sediments, and consists of clays and limonite/goethite and is very soft down to >50 meters.

The WNW trending lineaments are seen on the Figure 5 and reflect the structures that control the mineralisation at the nearby Gourdis and Vause Deposits. The complete tenement area will be evaluated again using geochemistry, structure and the HyVista/Magnetics in light of this discovery.



**Figure 6 Planned Drill holes in the Western Area on the mineralised trend**

The planned drilling will confirm the extension of the current mineralisation trend in length and direction and define the area to be tested by RC drilling. This drilling will be done upon receipt of the results and PoW approval.

The current Program of Works (PoW) has approval for additional holes to follow up the highly anomalous areas defined in the recent drilling program. This will extend the strike length of mineralisation from the current 150m to >300m. This program was completed and submitted in early October but the assays were still to come.





QUARTERLY ACTIVITIES STATEMENT  
FOR THE QUARTER ENDING 30 SEPTEMBER 2012

## Twin Hills Project

As previously announced, Aruma has completed the deeper drilling campaign with 773m of RC completed in 7 holes. These were drilled to test depth extensions of the previously reported RC holes. The results from the drilling have shown thick mineralisation (>0.1 g/t Au), however the grades achieved are at depth. The best intersection was 1m at 7.41 g/t Au and the longest was 5m at 1.14g/t. The possibility of large tonnage low grade deposits was not confirmed in this program. The mineralised greenstone was seen to be cut off at depth by the granite, which restricts the potential for deeper zones.

**Table 2 Twin Hills RC Drilling Results >1.00 g/t Au**

Hole No	Easting	Northing	Dip	Azimuth	From	To	Intercept	Au Assay FA30
THRC1	314705	6755401	-60	270	86	88	2	1.01 g/t
THRC2	314618	6755406	-60	90	69	70	1	2.87 g/t
THRC2	314618	6755406	-60	90	87	88	1	1.35 g/t
THRC3	314627	6755360	-60	90	38	39	1	2.34 g/t
THRC3	314627	6755360	-60	90	42	43	1	1.18 g/t
THRC3	314627	6755360	-60	90	49	53	4	1.60 g/t
THRC4	314705	6755401	-60	270	37	40	3	1.11 g/t
THRC4	314705	6755401	-60	270	68	69	1	2.24 g/t
THRC4	314705	6755401	-60	270	73	78	5	1.14 g/t
THRC4	314705	6755401		Including	73	75	2	1.84 g/t
THRC5	314705	6755401	-60	270	50	51	1	7.41 g/t
THRC5	314705	6755401	-60	270	61	62	1	1.48 g/t
THRC6	314705	6755401	-60	270	30	31	1	1.02 g/t

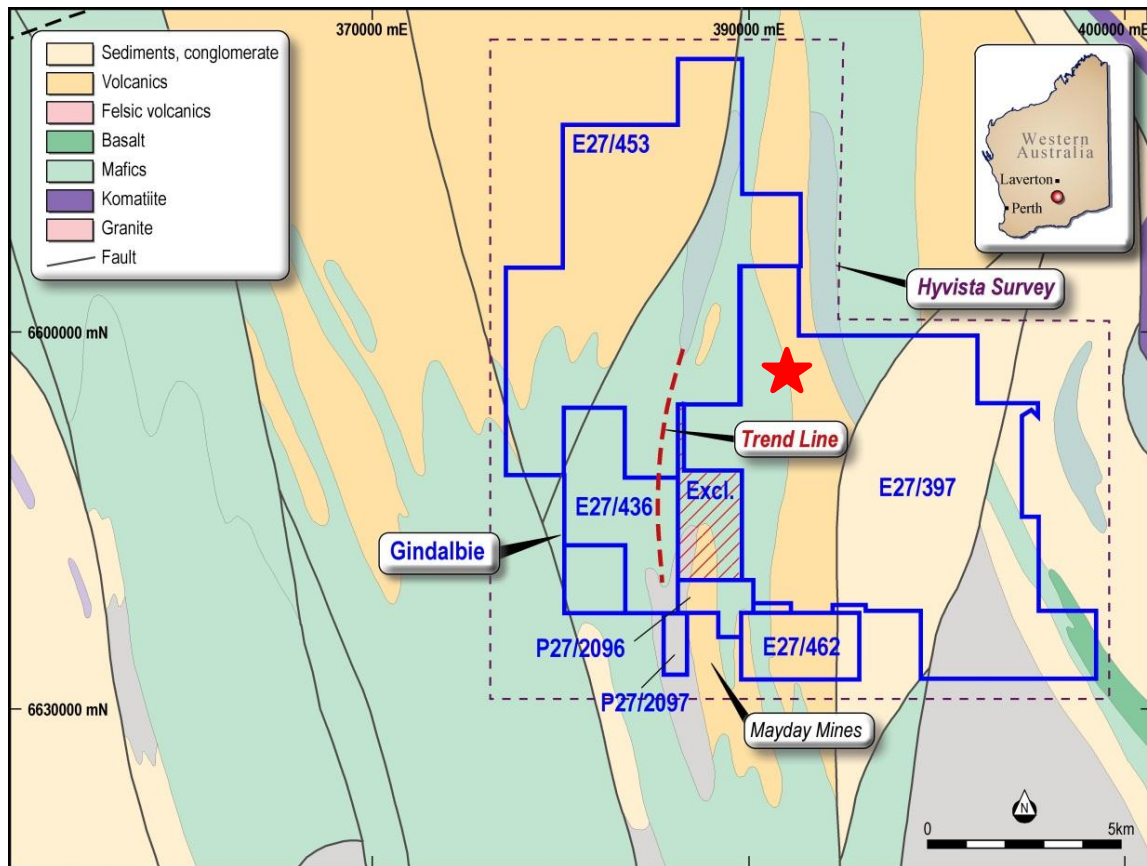
### Aruma Resources Limited



## Gindalbie Project

The Gindalbie Project was flown with HyVista and interpreted by Aruma and HyVista staff in February 2012. It is being reinterpreted in light of further information in Q4 2012.

The alteration associated with the Mayday Mines and Lady Lauren Shaft has been noted in several locations on the leases. A PoW has been approved and the Heritage Clearance completed. The most recently granted lease, EL27/453, will be explored in light of the HyVista Report. A 1,000m RAB program is proposed for the New Year after the PoW and Heritage is completed.



**Figure 7** Gindalbie Project and the Lady Lauren Line Gold assay  
(25g/t rock chip on red star)



**QUARTERLY ACTIVITIES STATEMENT  
FOR THE QUARTER ENDING 30 SEPTEMBER 2012**

---

### **Darlot East Project**

Results from the recent drilling program, consisted of 520m RAB in 23 holes showed no anomalous over 0.02g/t Au. Due to the results the Company has relinquished the Darlot East area.

### **Steeple Hill Project**

The Steeple Hill area has been rehabilitated and further work will be considered in light of falling Ni and Cu prices.

### **Laverton North Project**

The Paul Well lease area (EL28/2475) will be sampled after the HyVista interpretation in October.

## **Proposed Exploration Activities for Q2 2012/2013**

### **GLANDORE**

- Initial drilling scheduled on Fluid flow Model under covered western areas
- 61 RAB holes pegged

### **GINDALBIE PROJECT**

- Total package of 150 km<sup>2</sup> of covered prospective ground
- Heritage and site access completed
- 50 RAB holes scheduled

### **LAVERTON EAST**

- Geochem over new Paul Well HyVista anomalies

### **REGIONAL ELS**

- Field inspection and previous work will be investigated

### **Other Projects**

In addition to its current projects in Western Australia, Aruma continues to evaluate potential project opportunities both locally and overseas.

---

#### **Aruma Resources Limited**



ASX ANNOUNCEMENT  
31 October 2012

**QUARTERLY ACTIVITIES STATEMENT  
FOR THE QUARTER ENDING 30 SEPTEMBER 2012**

---

**For further information please contact:**

**Company:**

Peter Schwann  
Managing Director  
Aruma Resources Limited  
[info@arumaresources.com](mailto:info@arumaresources.com)  
Tel: +61 (0) 8 6389 1799  
Mob: +61 (0)417 946 370

**Media:**

Annette Ellis/ Karen Oswald  
Canning Purple Communications  
Tel: +61 (0) 8 6314 6300  
[aellis@canningspurple.com.au](mailto:aellis@canningspurple.com.au)  
[koswald@canningspurple.com.au](mailto:koswald@canningspurple.com.au)

*The information in this release that relates to Exploration Results, Mineral Resources or Ore Reserves is based on information compiled by Peter Schwann who is a Fellow of the Australasian Institute of Mining and Metallurgy and Chartered Professional (Geology). Mr Schwann is an employee of the Company. Mr Schwann has sufficient relevant experience to qualify as a Competent Person as defined in the JORC Code (2004) and consents to the inclusion of this information in the form and context in which it appears.*

---

**Aruma Resources Limited**

ABN 77 141 335 364 ASX: AAJ  
Suite 33, 18 Stirling Highway, Nedlands WA 6009  
Locked Bag 2000, Nedlands WA 6909, Australia  
T+61 8 6389 1799 | F +61 8 6389 0112 | W [www.arumaresources.com](http://www.arumaresources.com)