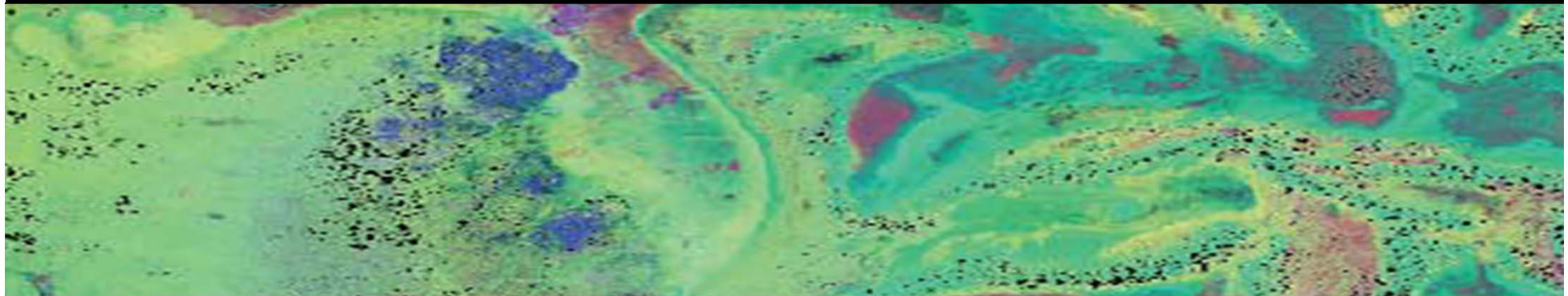




ARUMA RESOURCES



ARUMA'S GOLD TARGETS

Peter Schwann
Managing Director

Aruma Resources Limited – Presentation
AGM November 28 2012

Disclaimer /Competent Person's Statement



The information in this presentation:

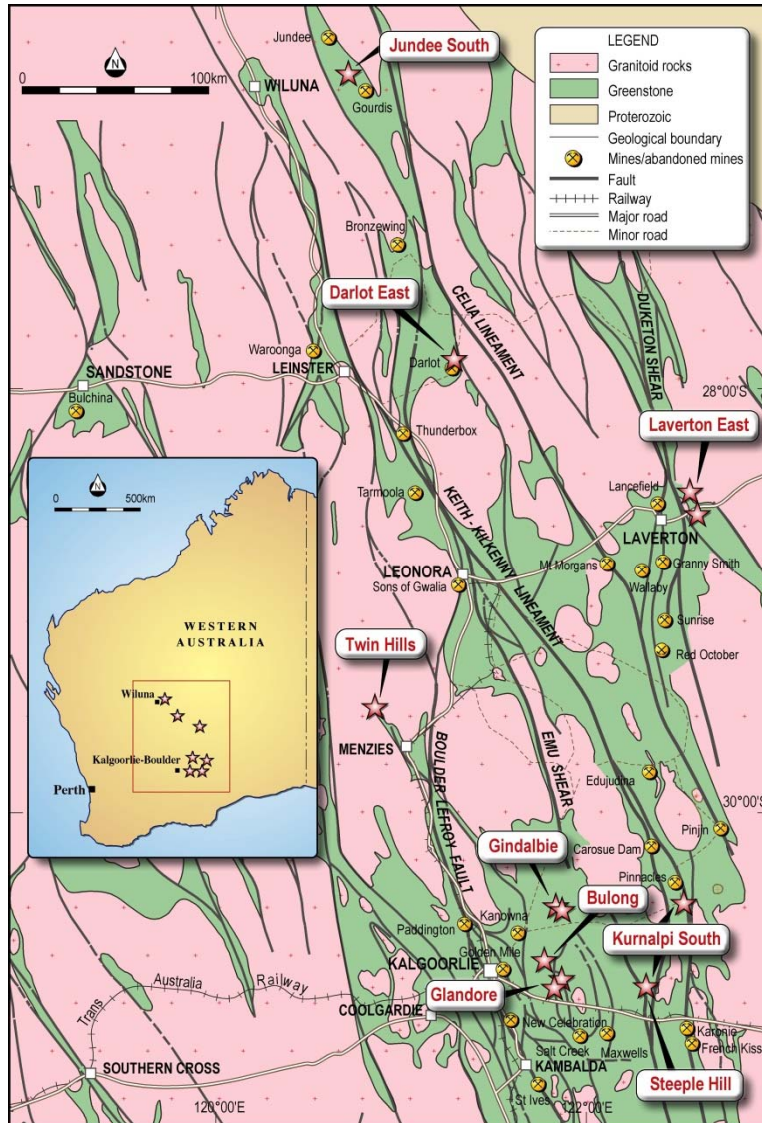
- was prepared with due care and attention and is current at the date of the presentation;
- is not an offer or recommendation to purchase or subscribe for securities in Aruma Resources Limited or to retain any securities currently held;
- does not take into account the potential and current individual investment objectives or the financial situation of investors;
- the information in this report that relates to Exploration Results, Mineral Resources or Ore Reserves is based on information compiled by Mr Peter Schwann, a full time employee of Aruma, who has sufficient experience to qualify as a Competent Person as defined in the 2004 Edition of the "Australasian Code for Reporting of Exploration Results, Mineral Resources and Ore Reserves";
- Mr Schwann consents to the inclusion in the presentation of the matters based on his information in the form and context in which it appears;
- actual results may materially vary from any forecasts (where applicable) in this presentation; and
- before making or varying any investment in securities in Aruma Resources Limited, all investors should consider the appropriateness of that investment in light of their individual investment objectives and financial situation and should seek their own independent professional advice.

Company Rationale



- DRILLING HIGH GRADE GOLD TARGETS
- DRILLING KNOWN GOLD AREAS IN W.A.
- USING NEW TECHNOLOGY TO
 - Test previously explored areas with known gold mineralisation
 - Test covered extensions of known gold mineralisation
 - Evaluate alteration and mineralisation remotely and cheaply
- ACTIVELY MANAGING ITS LANDHOLDING
 - By exploration, applications, options and relinquishing
- ESTABLISH A LOCAL HUB AROUND GLANDORE

Project Locations

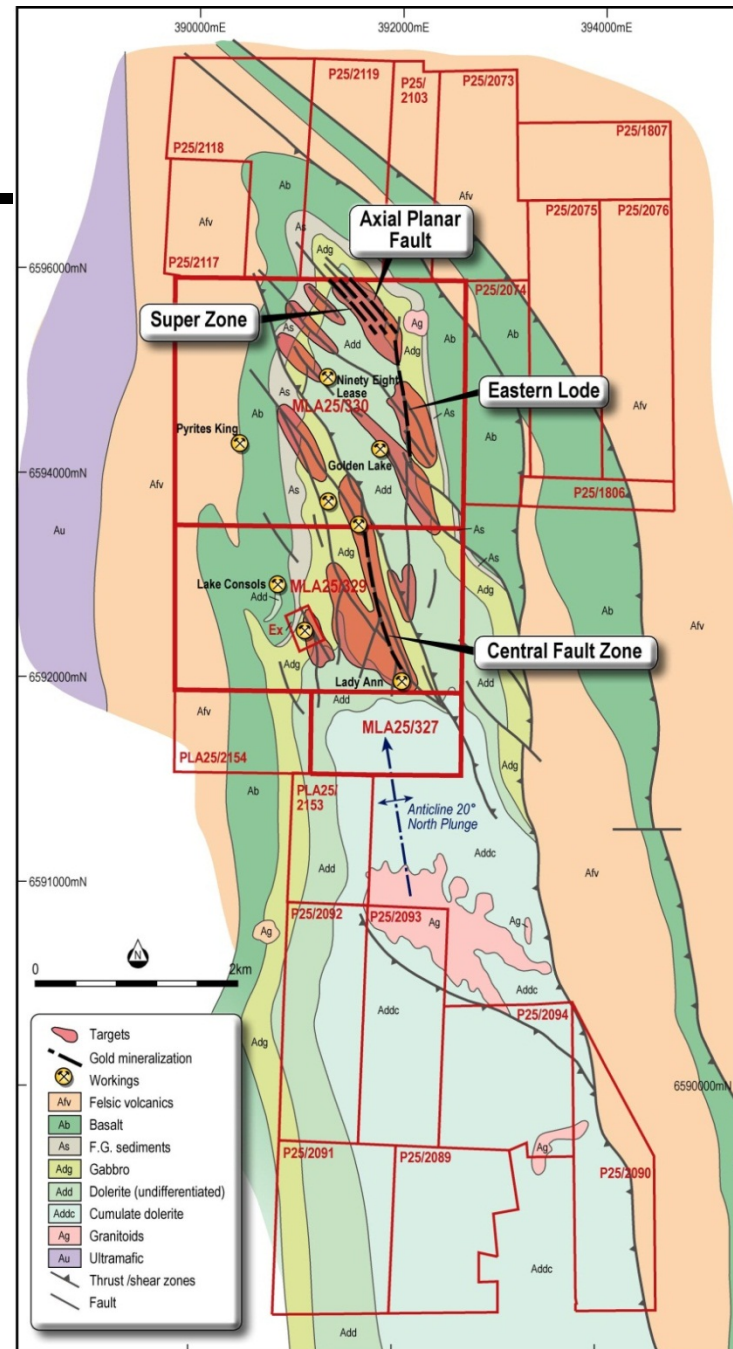


- **Glandore Project**
 - 40km east of Kalgoorlie-Boulder
 - Fluid Flow model targets to drill
- **Glandore Hub (60km radius)**
 - Glandore, Bulong and Gindalbie projects totalling over 250km²
 - High Grade targets from Hymap and sampling at Gindalbie
- **Jundee South Project**
 - 25km south of Jundee Mine
 - New Gold discovery,
 - 4m @15.37g/t Au, 1m 18.6m
 - Drilling defines 400m by 100 m RC target
- **Laverton East**
 - Northern Lease has two HyMap Targets
 - New gold zone in previous drilling

Glandore Gold Project



- Strong gold system
- 4 Fluid Flow Targets
- On major structures
- PoWs Approved
- Mining leases granted
- Drilling booked
- Good infrastructure
- Land area >57km²

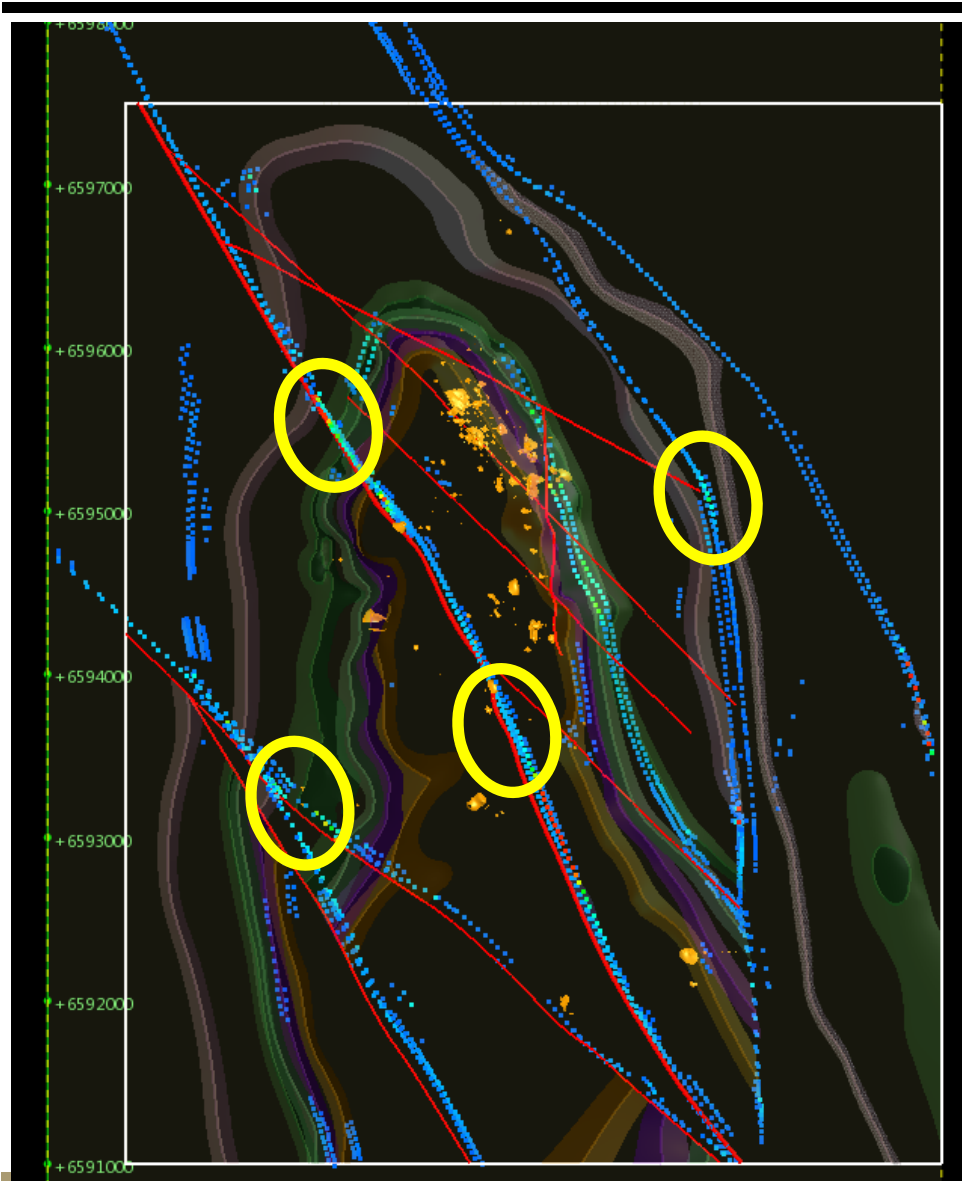


Why we are here – Thickness & Grade



Location	Intersection	From
Axial Planar Fault**	10m at 10.27 g/t Au	58m
	4m at 18.8 g/t Au	103m
Supergene Zone** (**Both these zones at the northern edge of Initial Leases)	8m at 10.4 g/t Au	18m
	9m at 8.37 g/t Au	17m
	9m at 3.43 g/t Au	15m
	2m at 43 g/t Au	38m
	5m at 4.99 g/t Au	36m
Central Fault Zone Aruma Drilling	9m at 4.22g/t Au	13m
	7m at 2.48g/t Au	23m
	11m at 2.32g/t Au	surface
	2m at 4.77g/t Au	18m

Glandore drilling targets from Fluid Flow

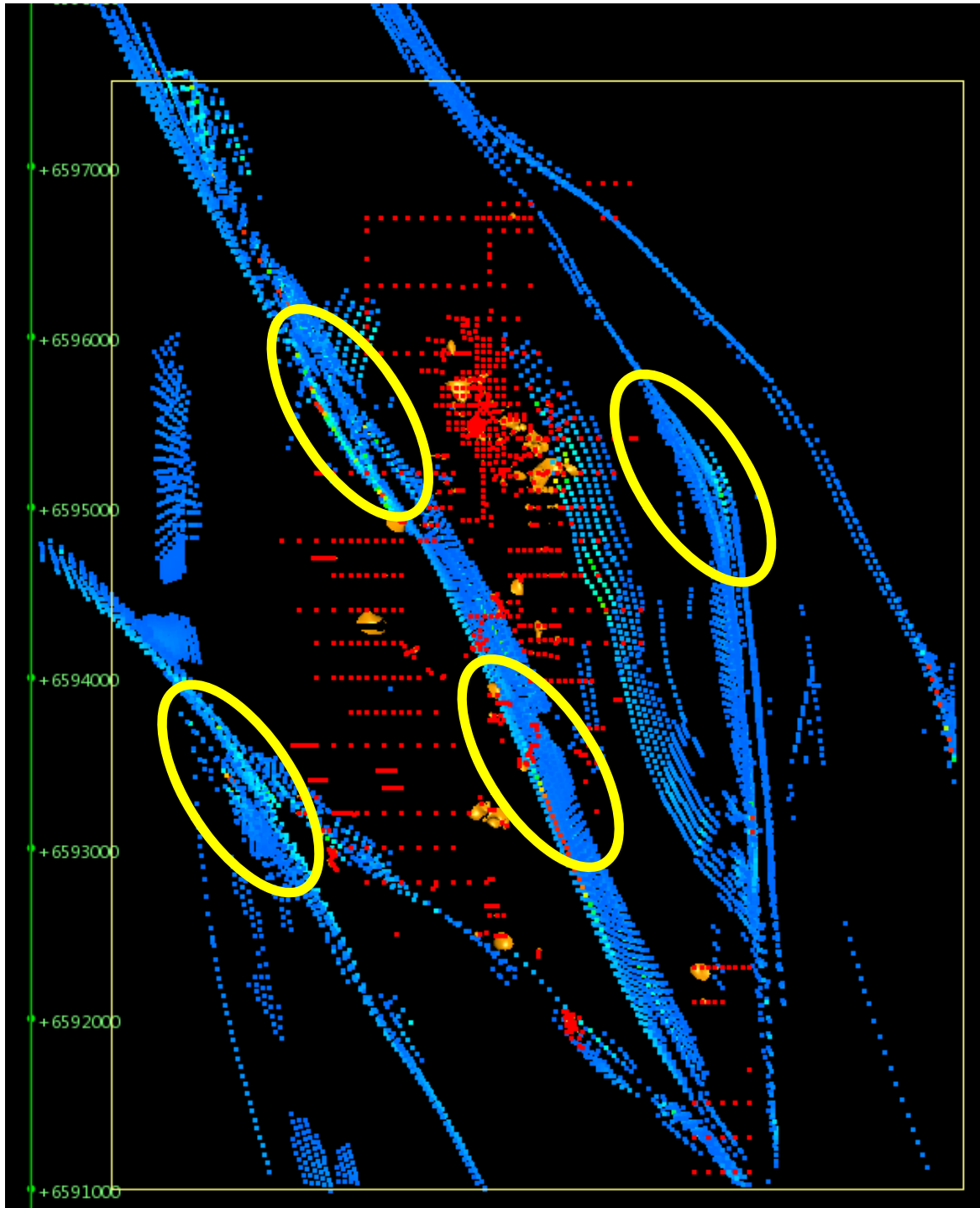


- Fluid Flow Study Completed
- Major Structures in Blue
- Yellow Ellipses are gold targets
- PoW approved for western targets
- Heritage Survey completed
- Drilling Booked for year end

TARGETS



- This is from a Fly through
- Points to note are
- drilling density and
- size of targets



FLY THROUGH GLANDORE



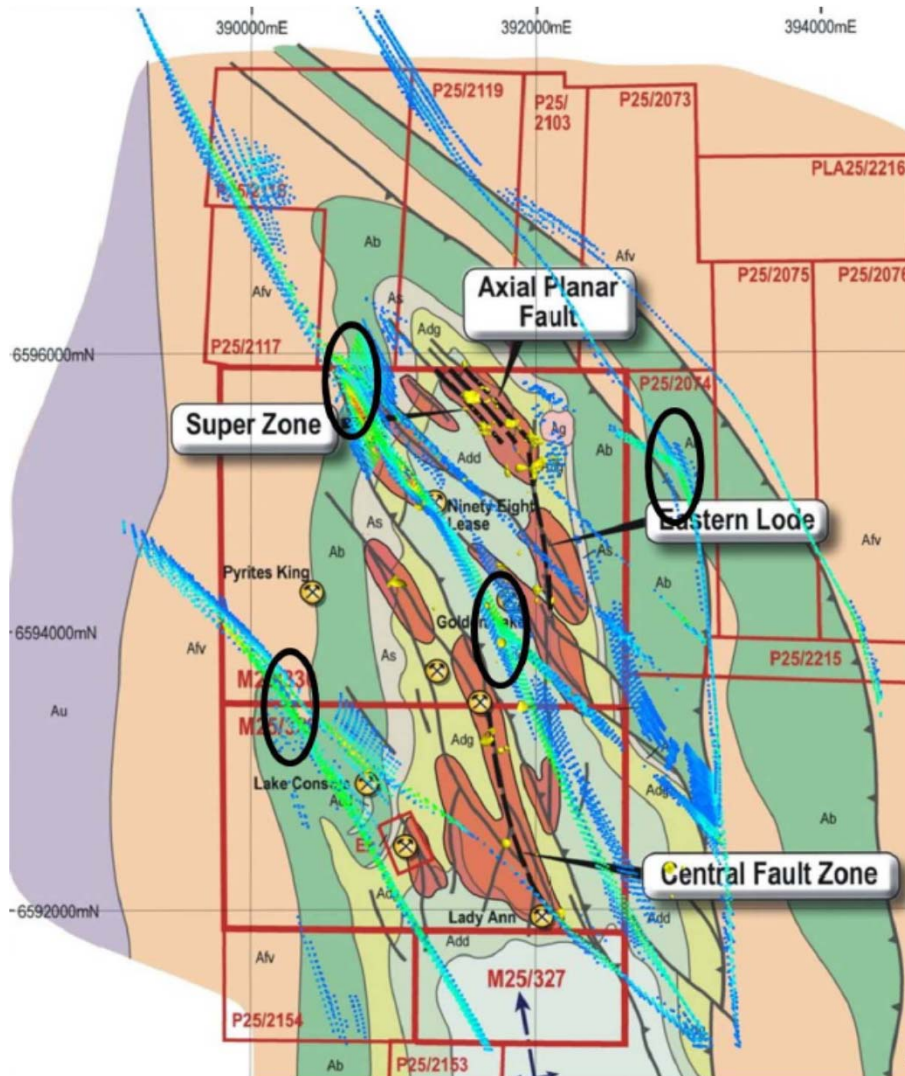
Points to note are

- drilling density
- undrilled targets
- size of targets



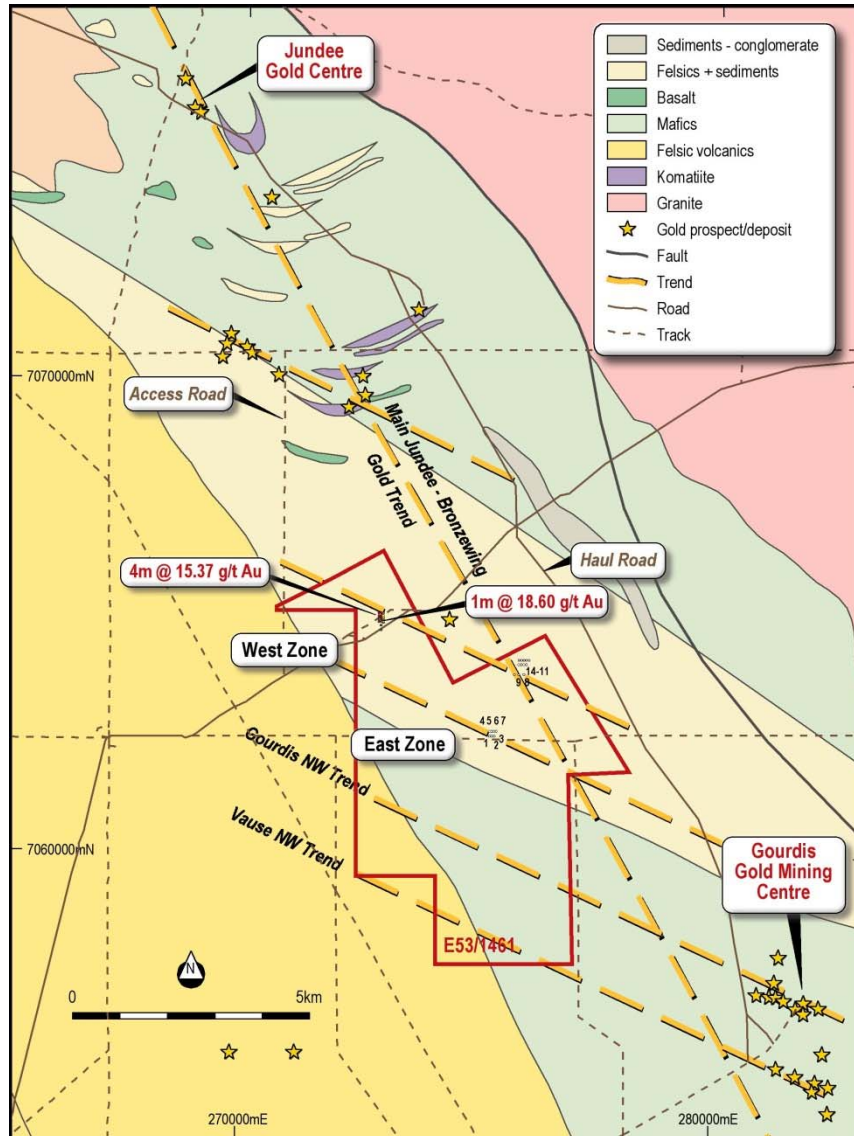
Glandore_test_flythrough.wmv

Glandore drilling targets on Geology



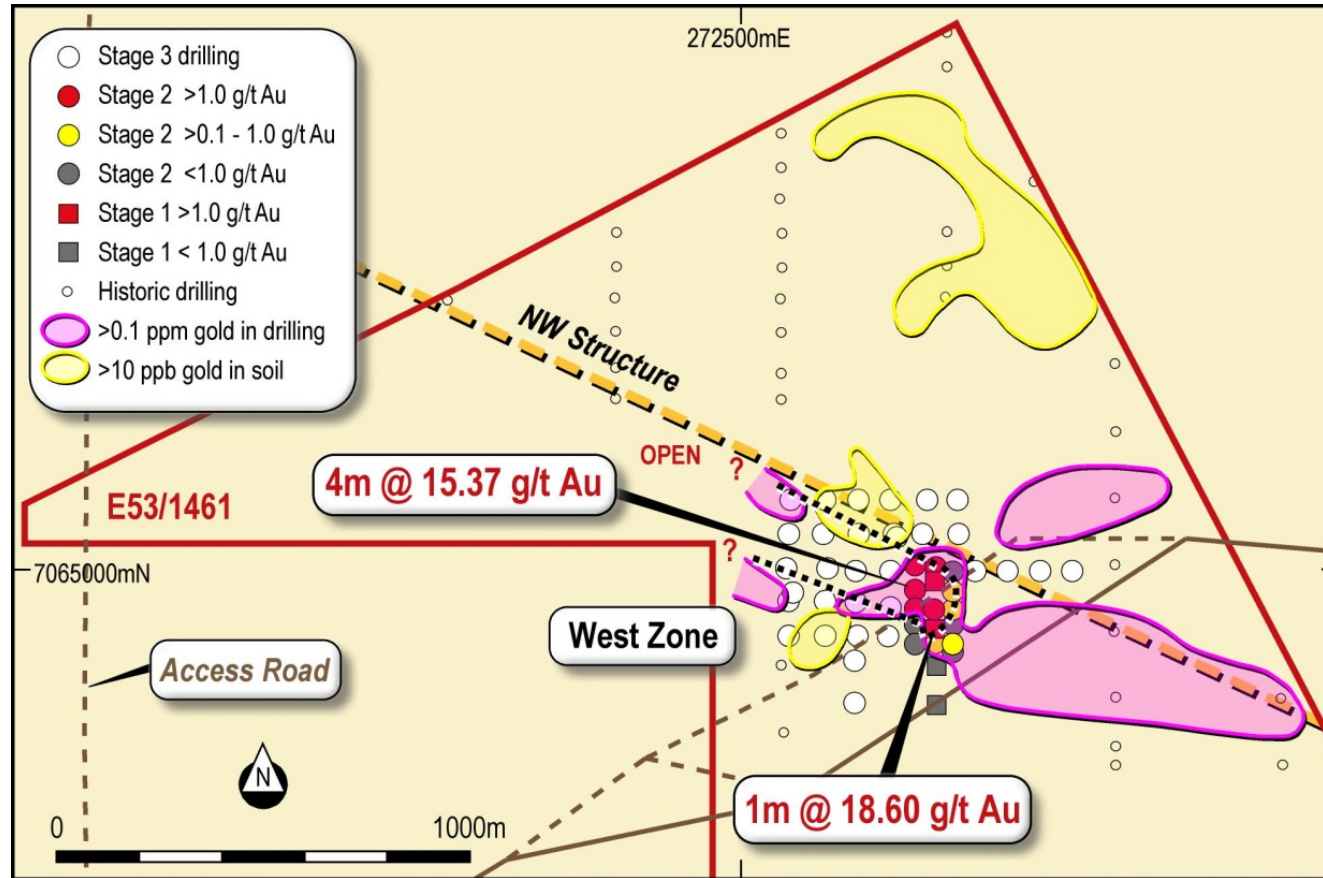
- On the major Majestic-Salt Creek structure
- Good correlation with Geology
- Warm colours = higher flows
- Black ellipses (800m long) define primary targets
- Historic intersections in yellow solids
- Access negotiation completed
- Drilling rig booked

Jundee South Project



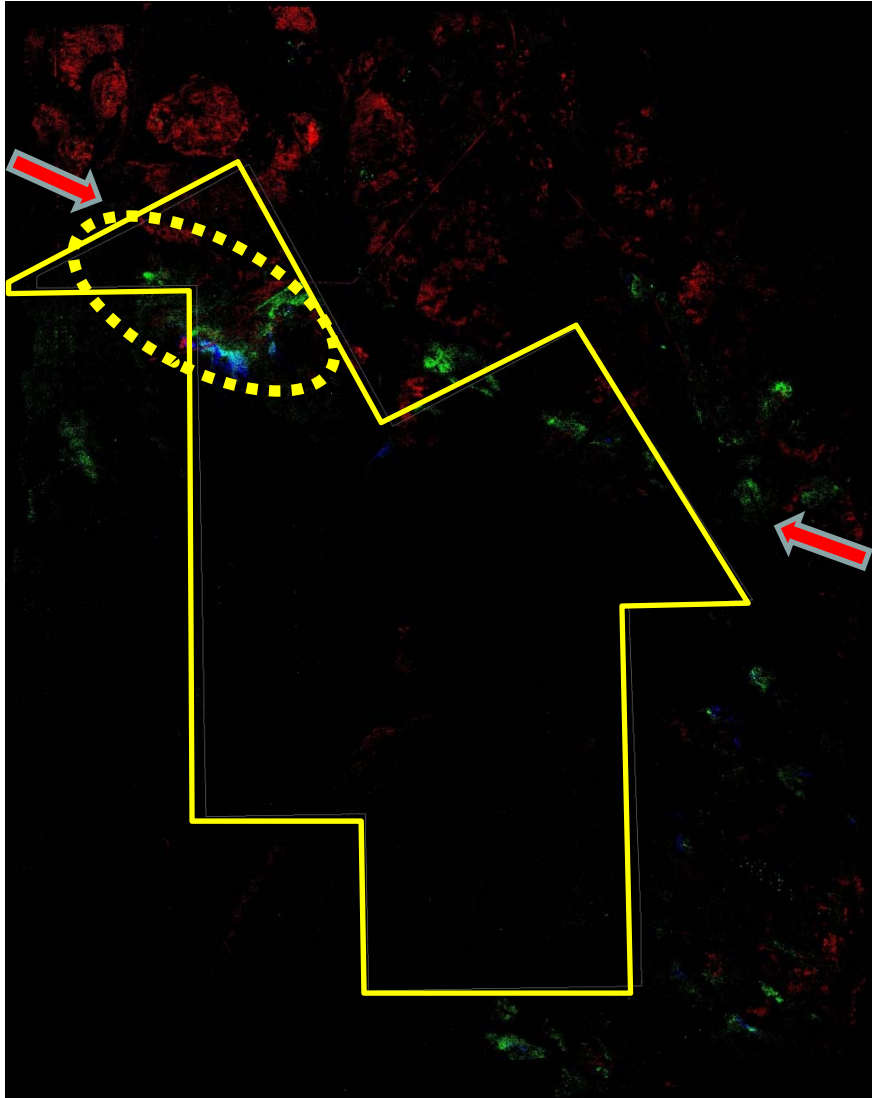
- Located 60km from Wiluna
- 2.5km from Jundee Haul Rd
- 25km from Jundee Mine
- 4 major Lineaments
- Hymap anomaly on discovery
- 905m drilled in October

Jundee South Western Area



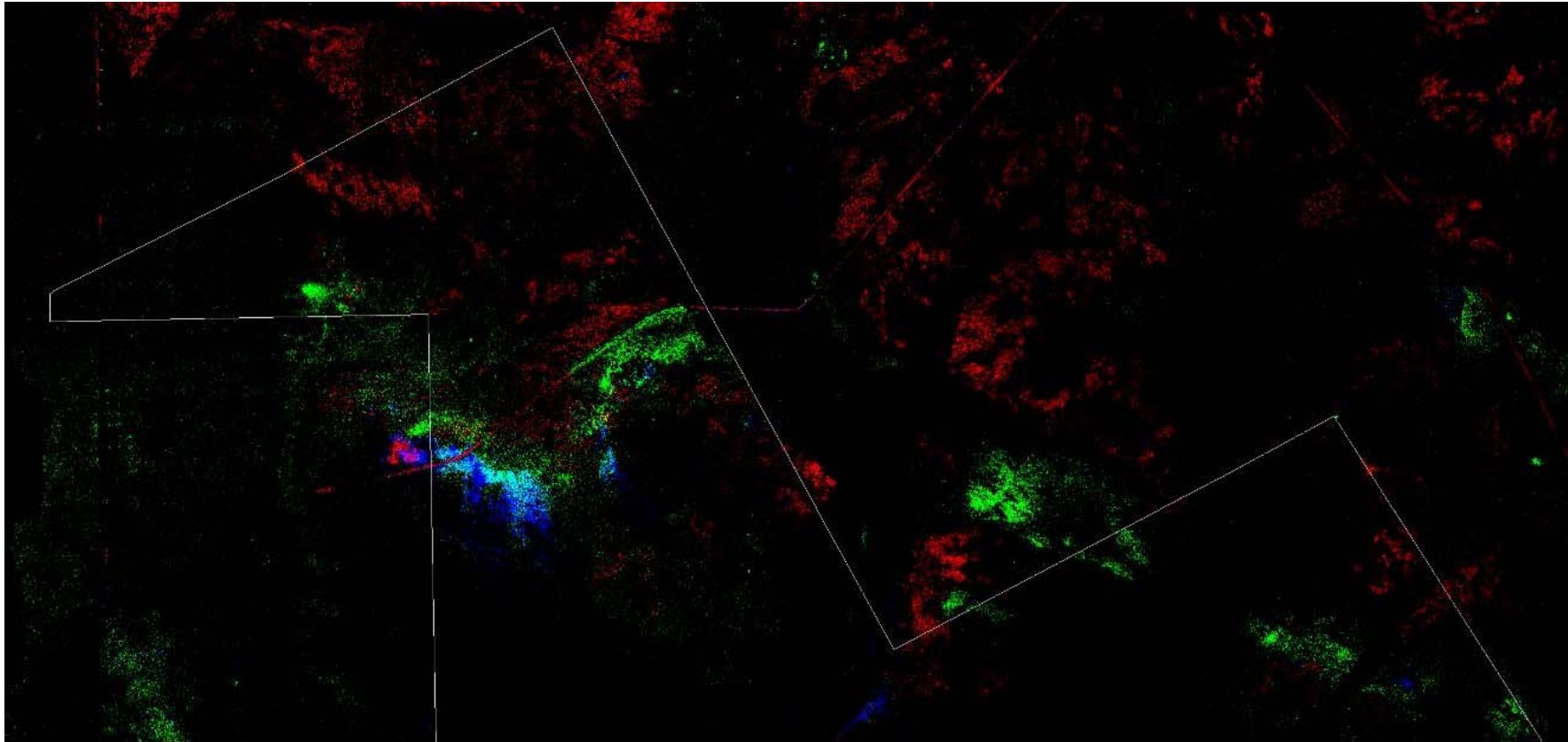
- JSR34 has 4m at 15.37g/t Au
- Over 2500m RAB delineates RC Target of 400m by 100m

Jundee South Hymap



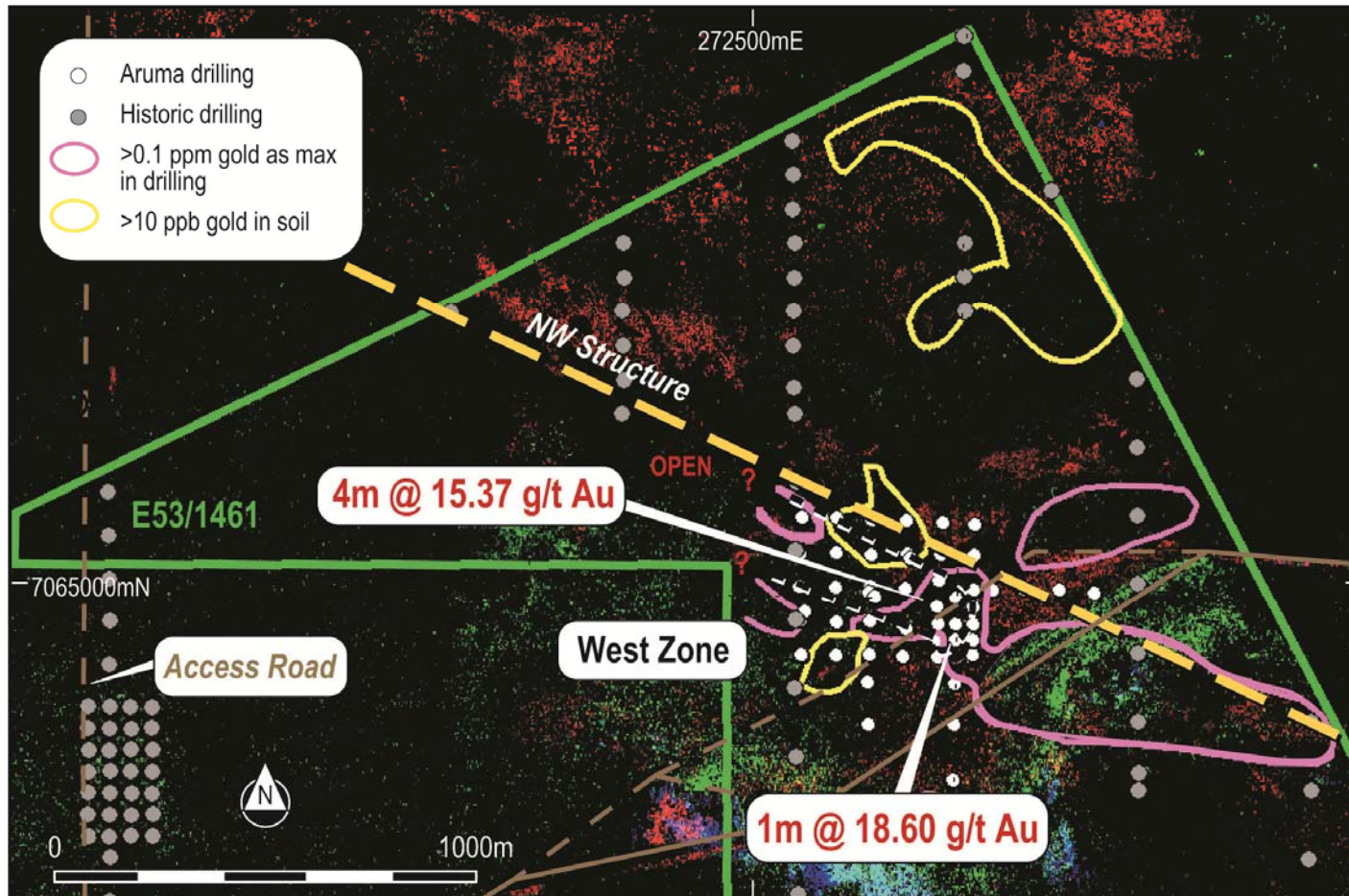
- Lease in Yellow
- Drilling in yellow ellipse
- Hymap
 - Goethite Red
 - Mica Green
 - Chlorite Product Blue
- Structure Clearly shown
- More Targets along structure

Structure and alteration from minerals



- Same minerals as previous slide
- Red = Go, Green = Chlorite and Blue = Phengite

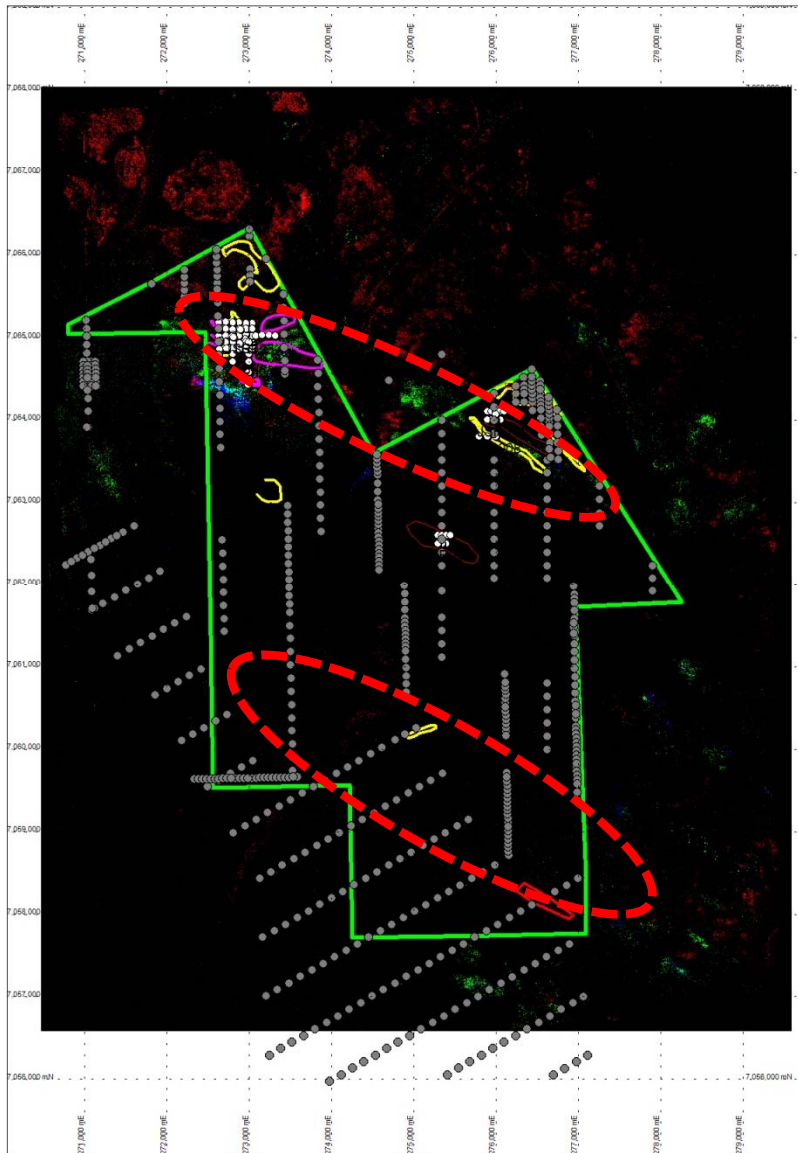
Structure, alteration and geochemistry




- Chemistry and drilling is successful

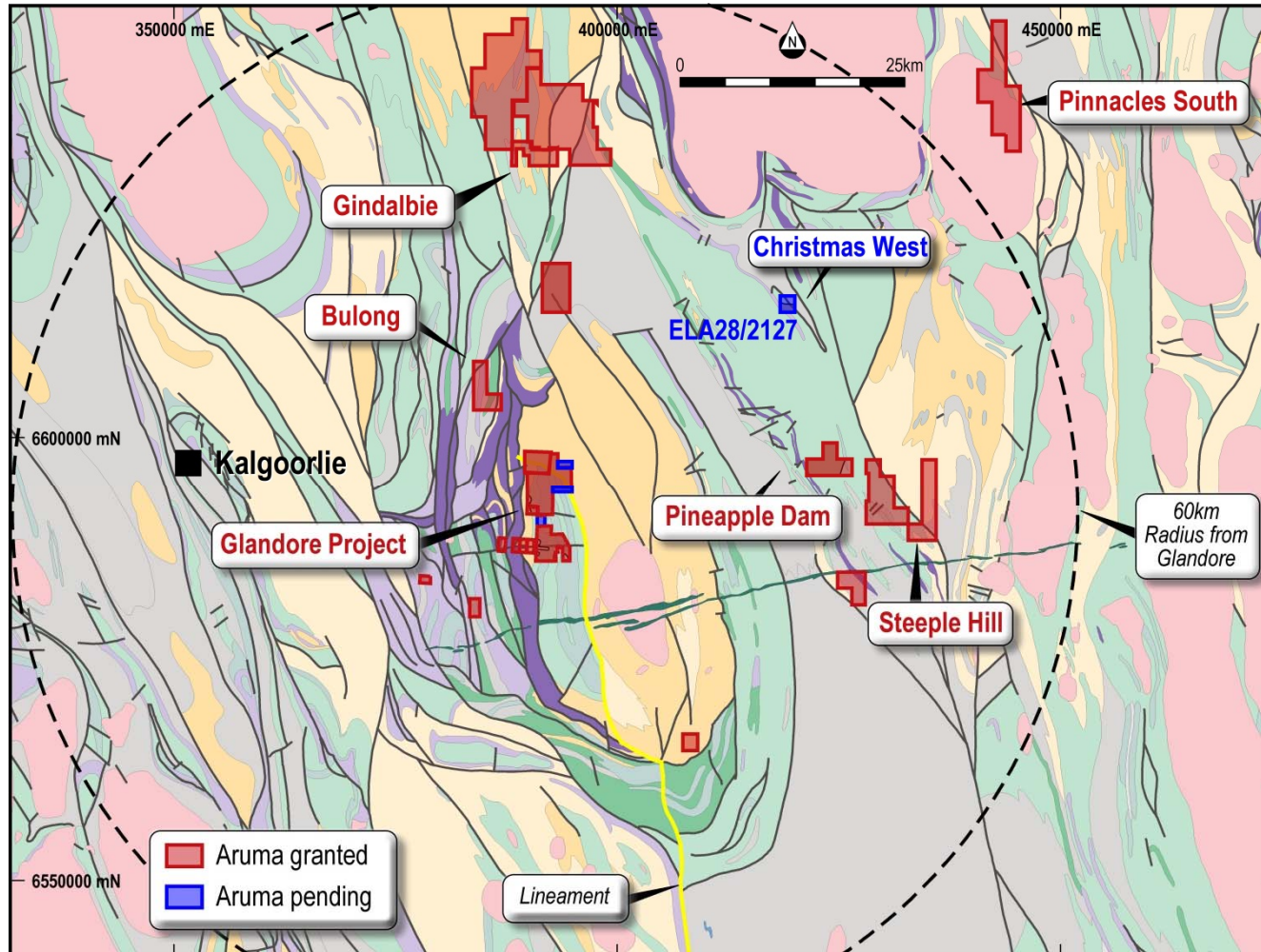


Look Elsewhere on the Lease



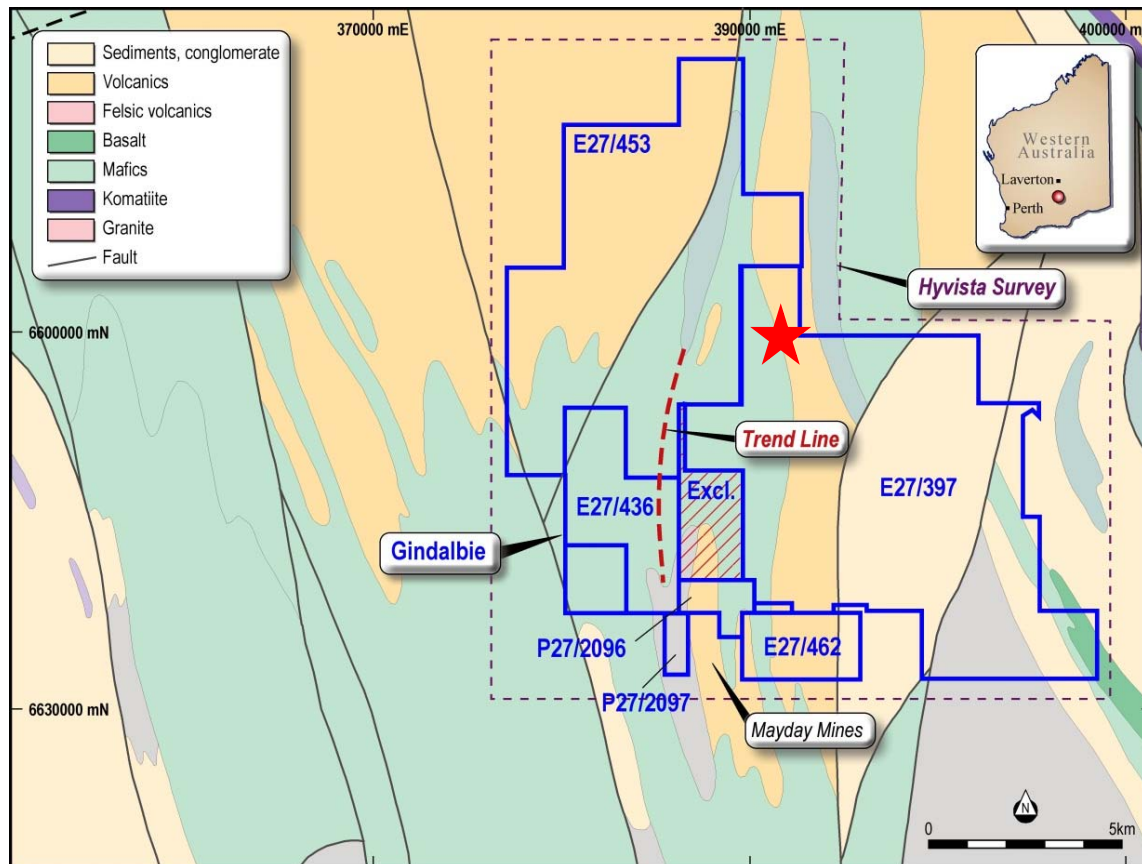
- Chemistry and drilling is successful
- Previous work unsuccessful
- New targets suggested 
- Drilling gaps are on structures

Glandore Hub Leases



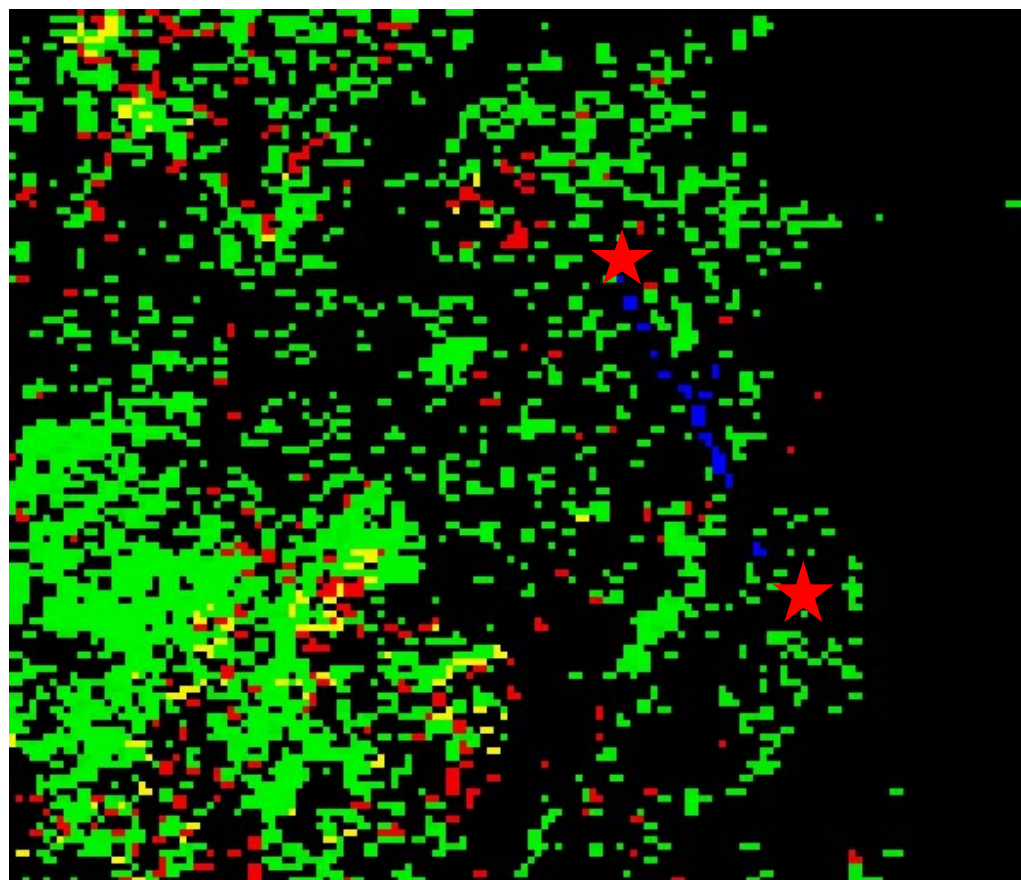
Leases in a 60km radius of Glandore

Gindalbie Project



- **Project Holding 150km²**
- 45km north of Glandore
- Chip samples up to 25 g/t on Lady Lauren line ★
- Lady Lauren on Hymap Anomaly
- PoW approved
- Heritage Clearance done
- Drilling in New Year

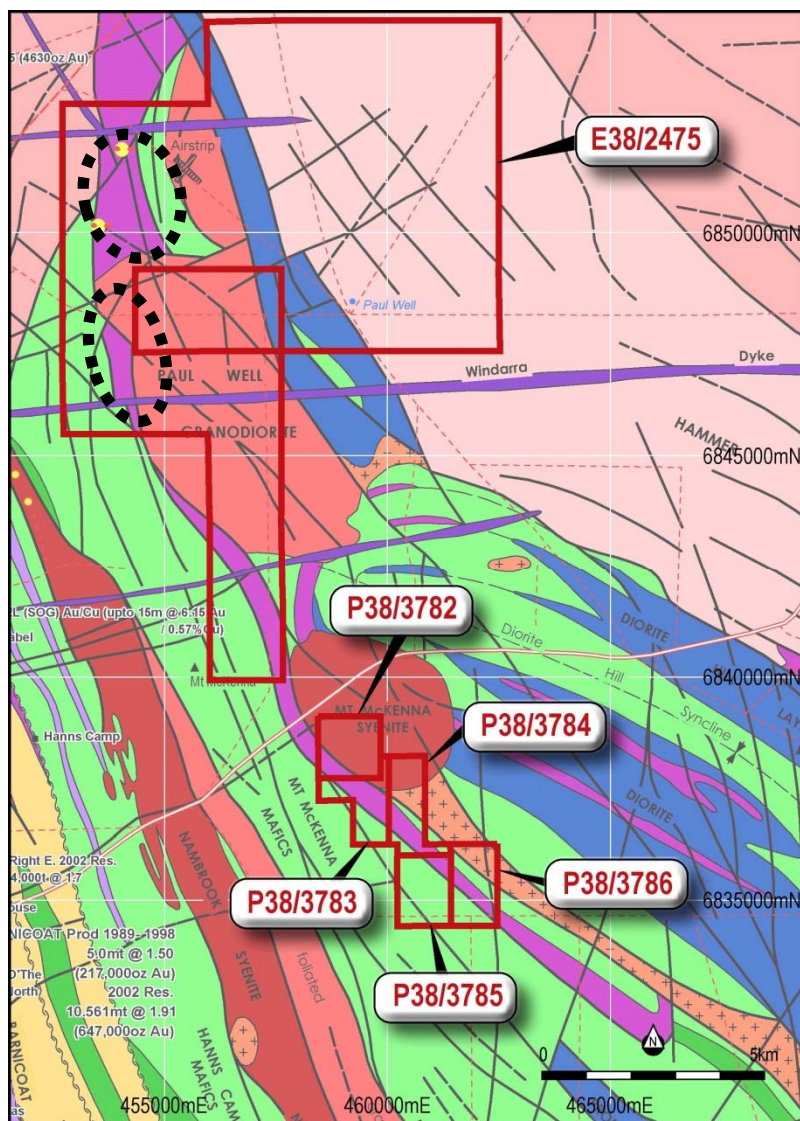
Gindalbie Project Hyvista Anomaly



- Chip samples up to 25 g/t on Lady Lauren line ★
- Lady Lauren on Hymap Anomaly
- Hymap anomaly is alteration
- Major SW-NE Structure with NNW anomaly



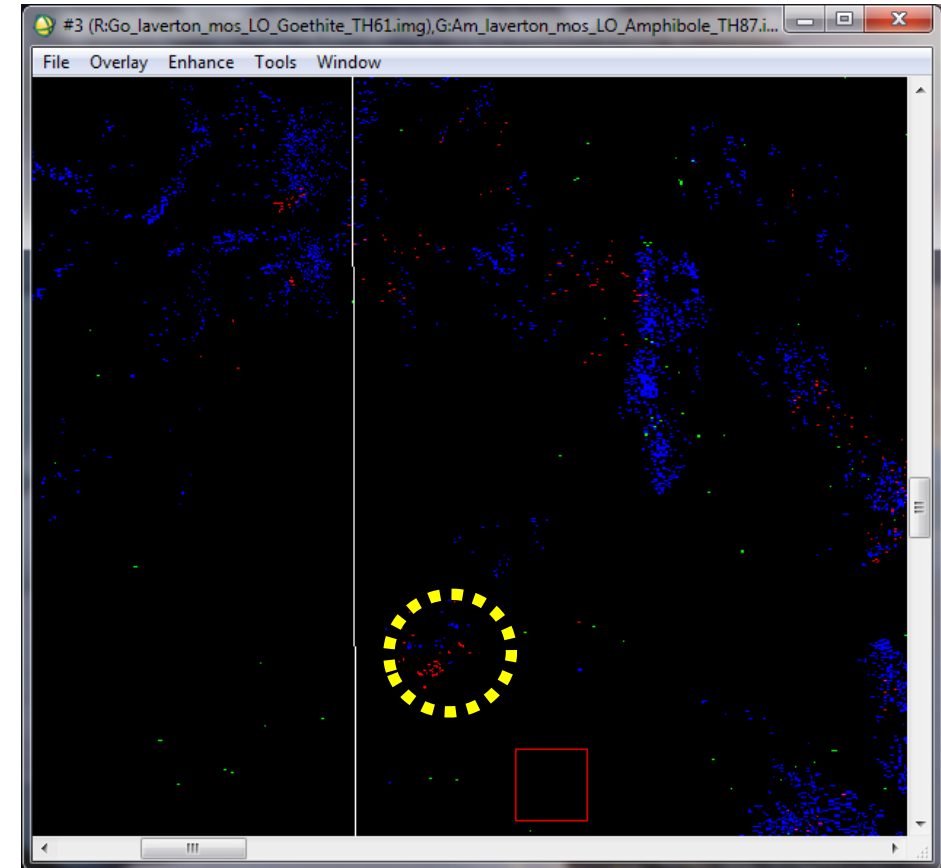
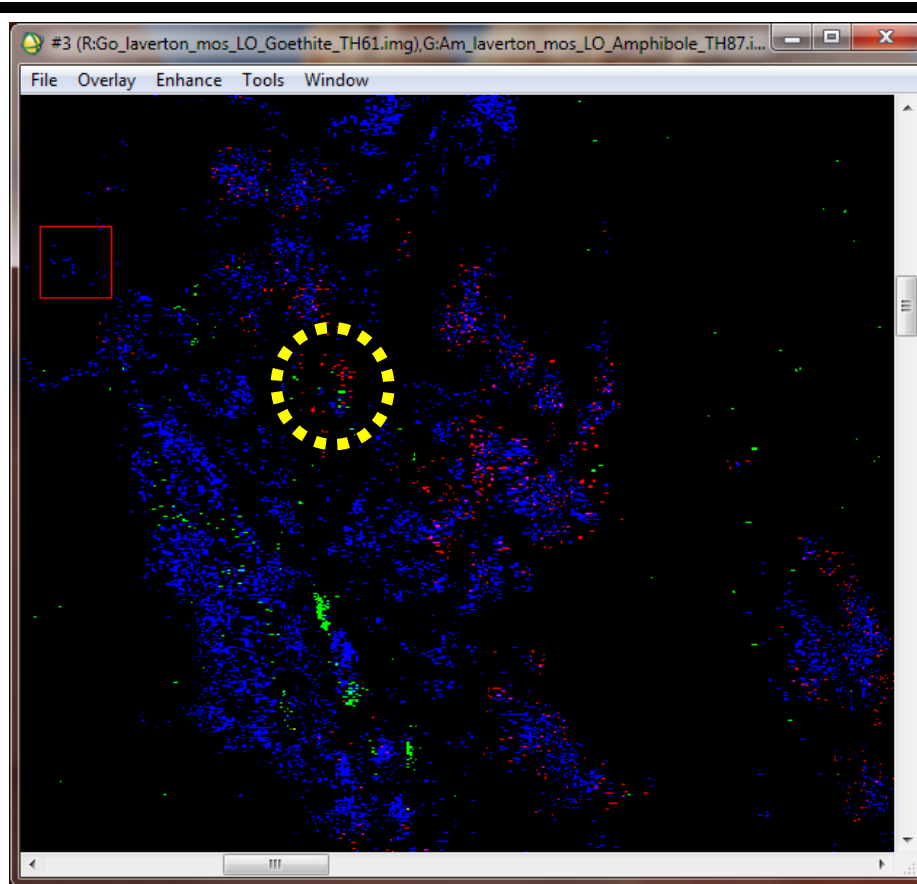
Laverton East Project (Paul Well)



- EL Granted
- Leases under shallow cover
- Hymap maps goethite over Gold anomaly
- 2m at 4.28 g/t in LEAC 31
- Exploration focus in North Lease
- Hyvista Targets for sampling



Laverton East Project Hyvista



- North Laverton
- Hymap Targets for sampling

South Laverton

Aruma's Next Steps



➤ **GLANDORE**

- Fluid Flow Study defines targets on two major structures off the Majestic Structure
- First Phase drilling on the western target areas Heritage cleared and ready to drill

➤ **GINDALBIE**

- PoW approved and initial heritage survey completed
- Lady Lauren Hymap Anomaly identified
- Drilling in New Year

➤ **JUNDEE SOUTH**

- 48m at 1.47g/t (incl. 4m at 15.37g/t) in JSR34
- RC area defined at 400m by 100m of >1g,t Au
- Major Hymap anomalies coincident with structure and Gold

➤ **LAVERTON EAST**

- Soils and RAB planned drilling over Hymap anomalies

ARUMA – THE INVESTMENT STORY



- 4 Advanced Projects in the proven Eastern Goldfields
- All Projects strategically located
- Adjacent to established gold producers
- 3 programs of RC planned
- Applied for State Funded drilling
- Next programs funded

Company Snapshot



Paul Boyatzis – Non Executive Chairman
Experienced in capital and equity markets

Peter Schwann – Managing Director
Experienced geologist in exploration and mining

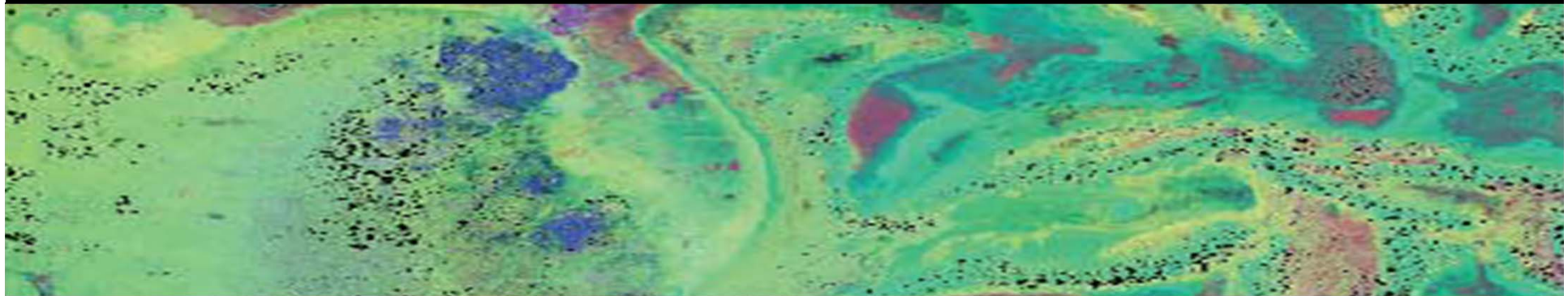
Ki Keong Chong – Non Executive Director
Established Lawyer in Asian Finance and Investment Banking

Capital Structure

Shares on Issue	80M
Market Capitalisation at 7c	\$5.6M
Cash (31 October 2012)	\$1.7M
Shareholders	400
Top 20	73.7%
Hemisphere Resources	50.4%



ARUMA RESOURCES



Thank you.