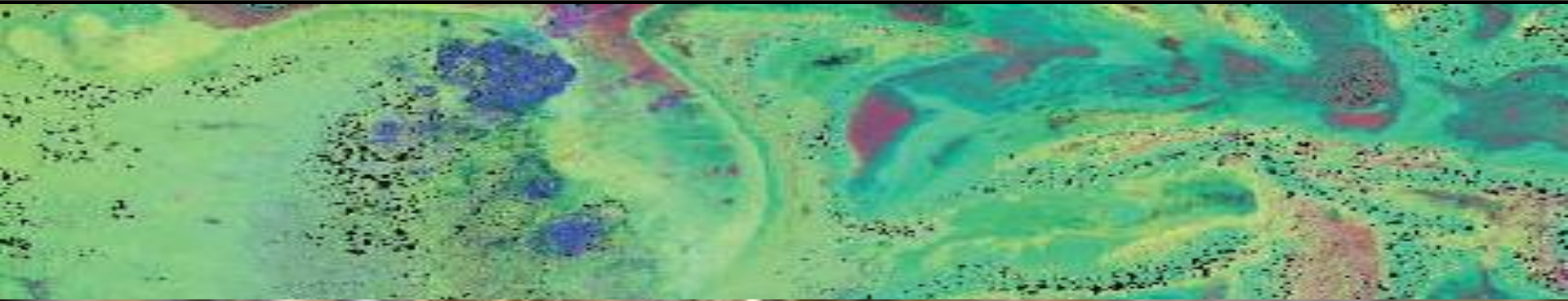




ARUMA RESOURCES



UNDER COVER EXPLORATION

Peter Schwann
Managing Director

Aruma Resources Limited – Paydirt's Gold Conference
19 April 2012

Disclaimer /Competent Person's Statement



The information in this presentation:

- was prepared with due care and attention and is current at the date of the presentation;
- is not an offer or recommendation to purchase or subscribe for securities in Aruma Resources Limited or to retain any securities currently held;
- does not take into account the potential and current individual investment objectives or the financial situation of investors;
- the information in this report that relates to Exploration Results, Mineral Resources or Ore Reserves is based on information compiled by Mr Peter Schwann, a full time employee of Aruma, who has sufficient experience to qualify as a Competent Person as defined in the 2004 Edition of the "Australasian Code for Reporting of Exploration Results, Mineral Resources and Ore Reserves";
- Mr Schwann consents to the inclusion in the presentation of the matters based on his information in the form and context in which it appears;
- actual results may materially vary from any forecasts (where applicable) in this presentation; and
- before making or varying any investment in securities in Aruma Resources Limited, all investors should consider the appropriateness of that investment in light of their individual investment objectives and financial situation and should seek their own independent professional advice.

Company Rationale



- FOCUSSED ON GOLD IN W.A.
- BUILDING A REGIONAL HUB AROUND GLANDORE
- USING HYVISTA, PIMA AND FLUID FLOW STUDIES
- UTILISING THIS NEW TECHNOLOGY TO
 - Test previously explored areas with known gold mineralisation
 - Test covered extensions of known gold mineralisation
 - Evaluate alteration and mineralisation remotely and cheaply
- ACTIVELY MANAGING ITS LANDHOLDING
 - By exploration, applications, options and relinquishing

Company Snapshot



Paul Boyatzis – Non Executive Chairman
Strengths in capital and equity markets.

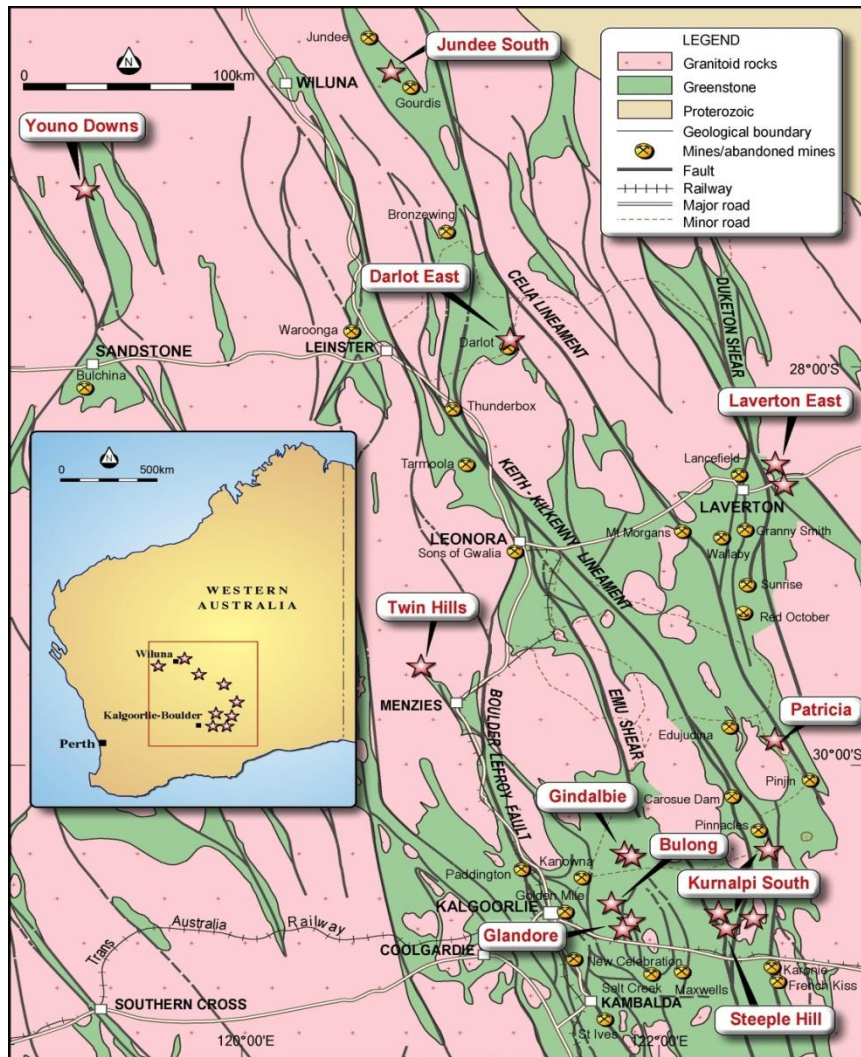
Peter Schwann – Managing Director
Experienced geologist in exploration and mining

Ki Keong Chong – Non Executive Director
Established Lawyer in Asian Finance and Investment Banking

Capital Structure

Shares on Issue	80M
Market Capitalisation at 7c	\$5.6M
Cash (19 April 2012)	\$2.5M
Shareholders	400
Top 20	73.7%
Hemisphere Resources	50.4%

Project Locations

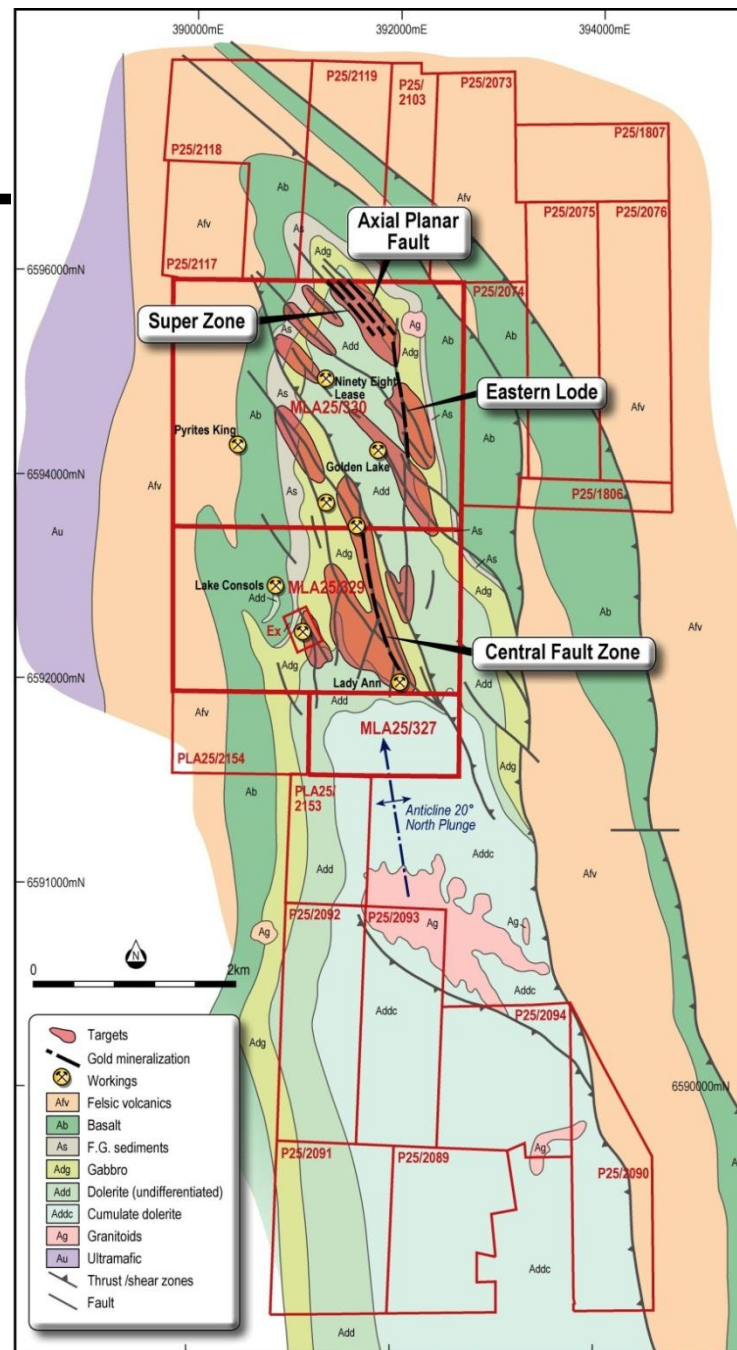


- **Glandore Project**
40km east of Kalgoorlie-Boulder
- **Glandore Hub (60km radius)**
 - Glandore, Bulong, Kurnalpi South and Gindalbie projects totalling over 500km²
- **Jundee South Project**
 - 20km south of Jundee Mine
- **Twin Hills Project**
 - 15km Anomalies ready to drill
- **Steeple Hill – Pineapple Dam**
 - Ni Cu Gossan and Blebby ore in drillhole
- **Darlot East Project**
 - East of Darlot Mine on old workings
- **Patricia Project**
 - On the Edjudina trend and under cover

Glandore Gold Project



- Land area >57km²
- Strong gold system
- 5 Fluid Flow Targets
- On major feeder structures
- PoWs submitted
- Mining leases granted
- Ready for Drilling

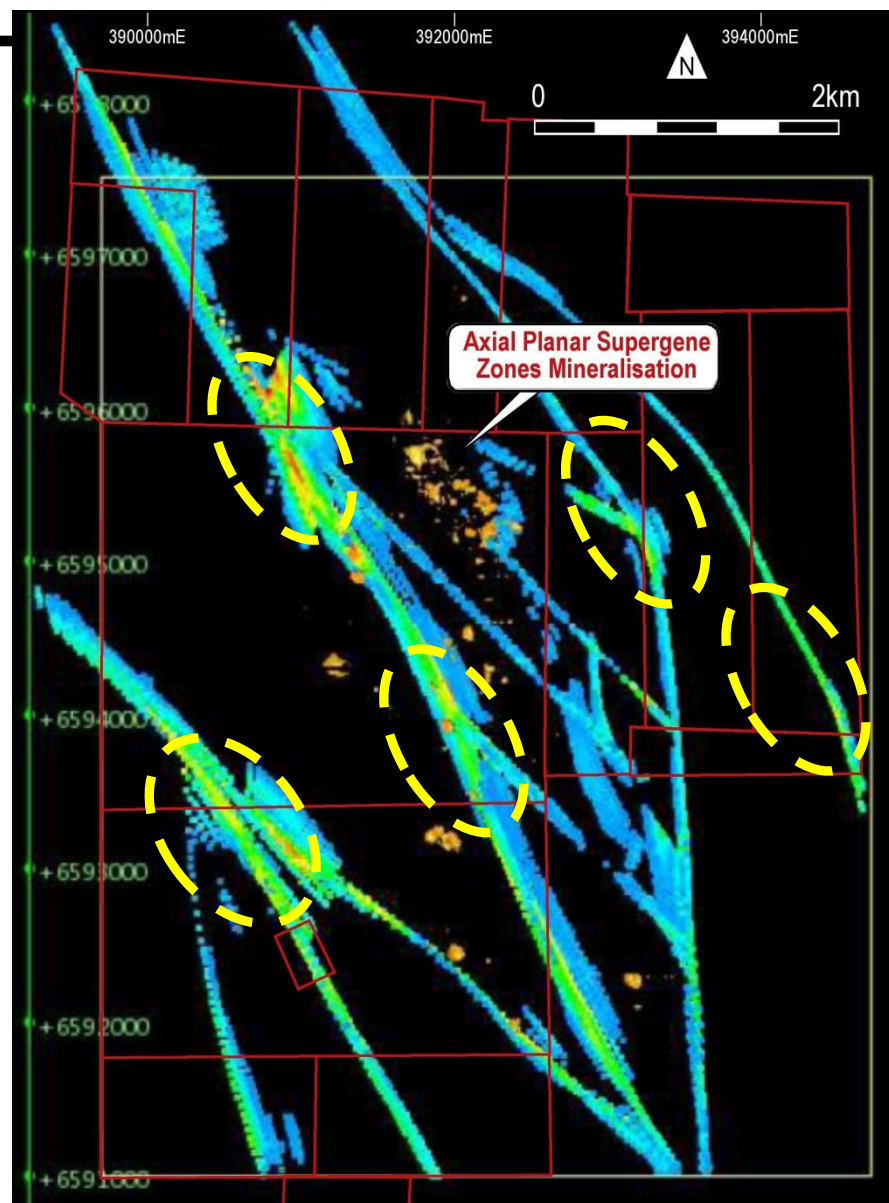


Thickness and Grade



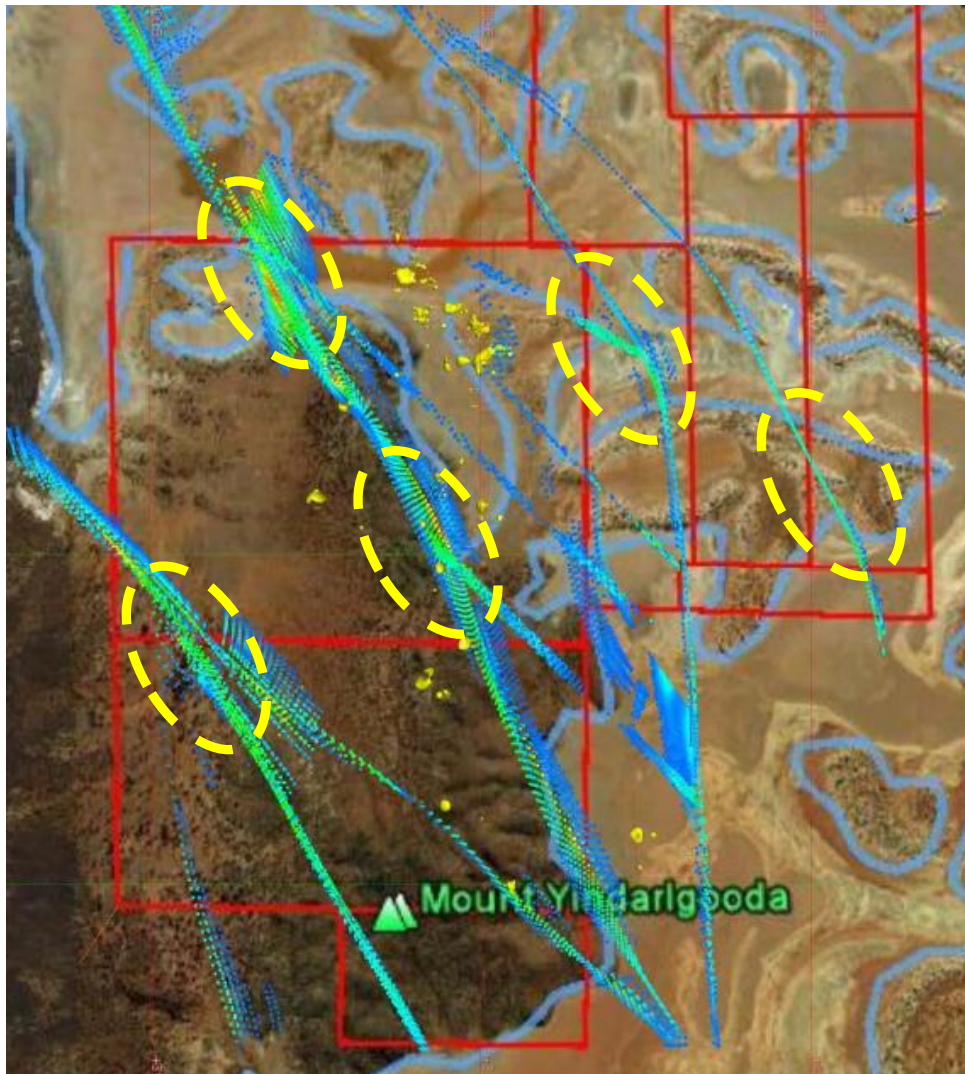
Location	Intersection	From
Axial Planar Fault**	10m at 10.27 g/t Au	58m
	4m at 18.8 g/t Au	103m
Supergene Zone** (**Both these zones at the northern end Of Initial Leases)	8m at 10.4 g/t Au	18m
	9m at 8.37 g/t Au	17m
	9m at 3.43 g/t Au	15m
	2m at 43 g/t Au	38m
	5m at 4.99 g/t Au	36m
Central Fault Zone Aruma Drilling	9m at 4.22g/t Au	13m
	7m at 2.48g/t Au	23m
	11m at 2.32g/t Au	surface
	2m at 4.77g/t Au	18m

Glandore drilling targets from Fluid Flow



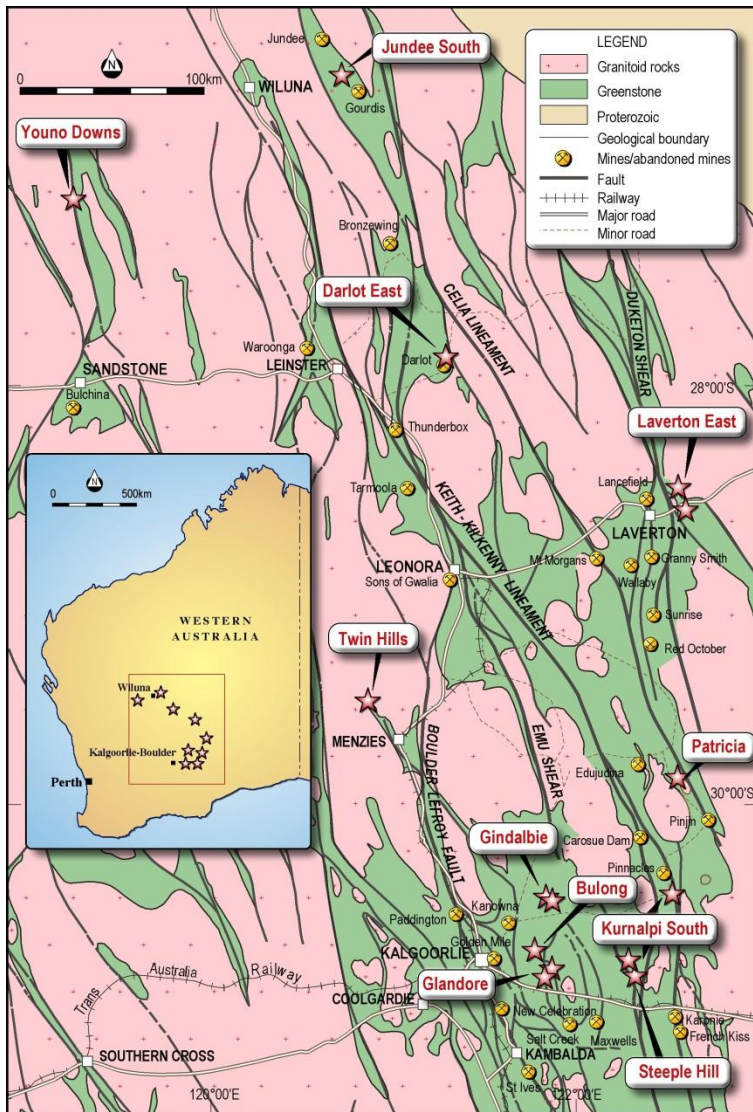
- Major Structures in Blue
- Warm Colours show gold targets
- Fluid Flow Study Completed
- PoW in for evaluation of targets

Glandore drilling targets on Google Earth



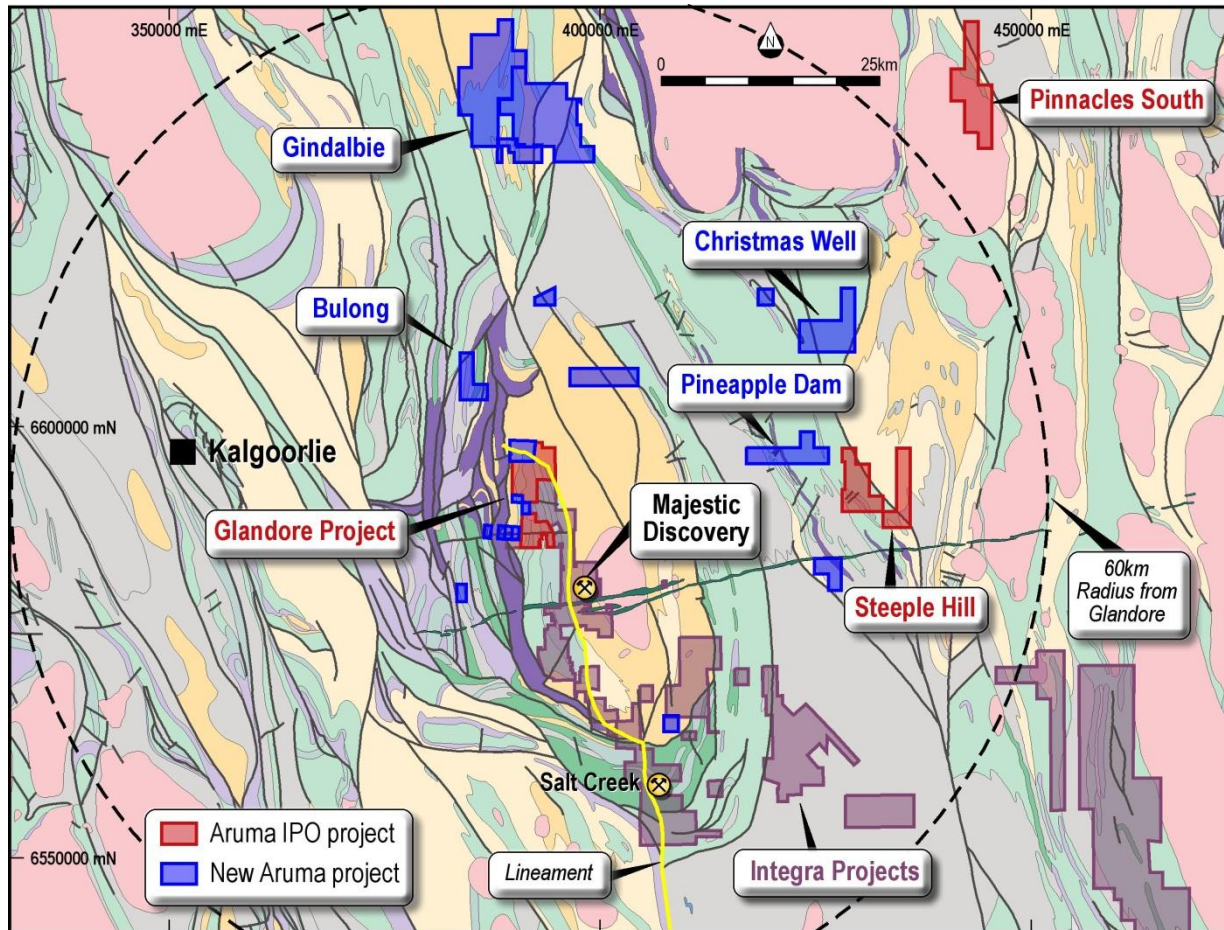
- Major Structures in Blue
- Warm Colours show gold targets
- Yellow ellipses define Primary Targets
- Historic intersections in Gold solids
- PoW in for evaluation of targets

Regional Projects



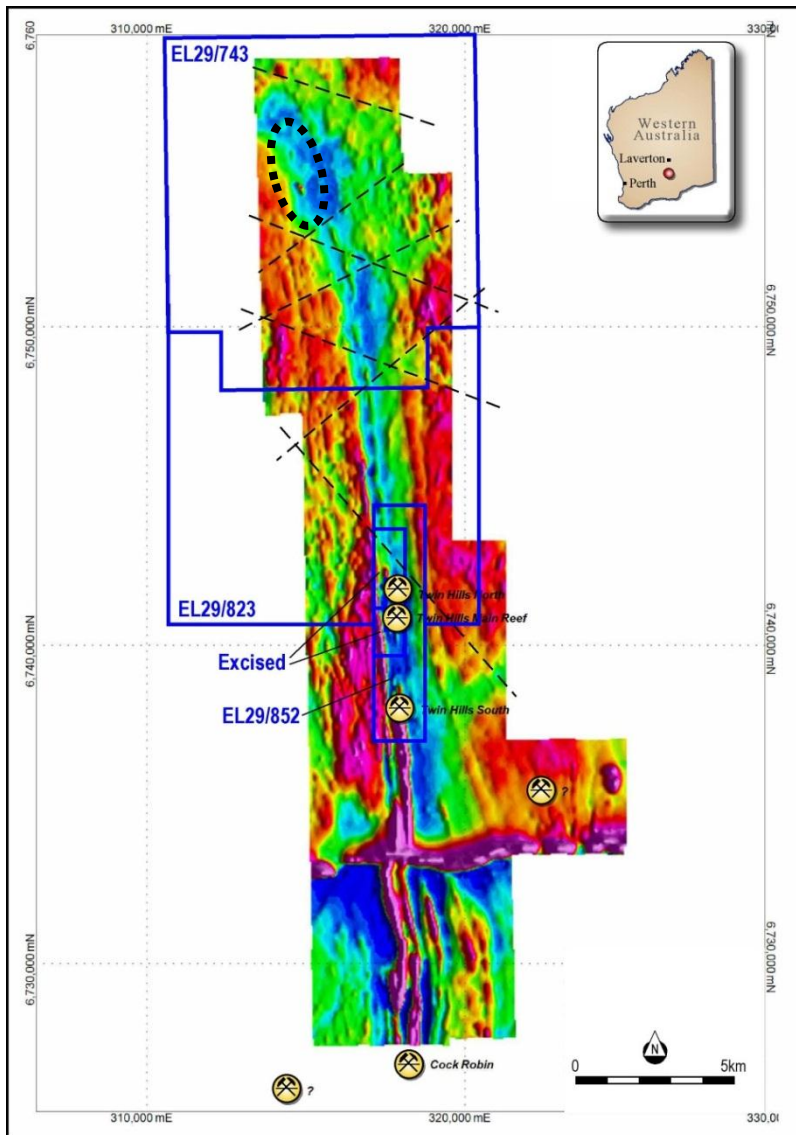
- **Twin Hills**
2400m RAB just completed, RC PoW submitted
- **Gindalbie**
PoW Approved, awaiting Heritage Survey
- **Laverton East**
Northern Leases has Hyvista trends to drill
- **Jundee South**
Drilling of two gold zones, assays to 18.6g/t
- **Darlot East**
Leases granted and PoW submitted
- **Steeple Hill**
PoW in, PGM assays indicate Cu-Ni-S system
- **Patricia**
5km of Edjudina trend under cover
- **Bulong**
Lease near grant
- **Youno Downs**
Magnetic trend from Hilda mines under cover

Additional Lease Areas Acquired



New leases in a 60km radius of Glandore

Twin Hills Project

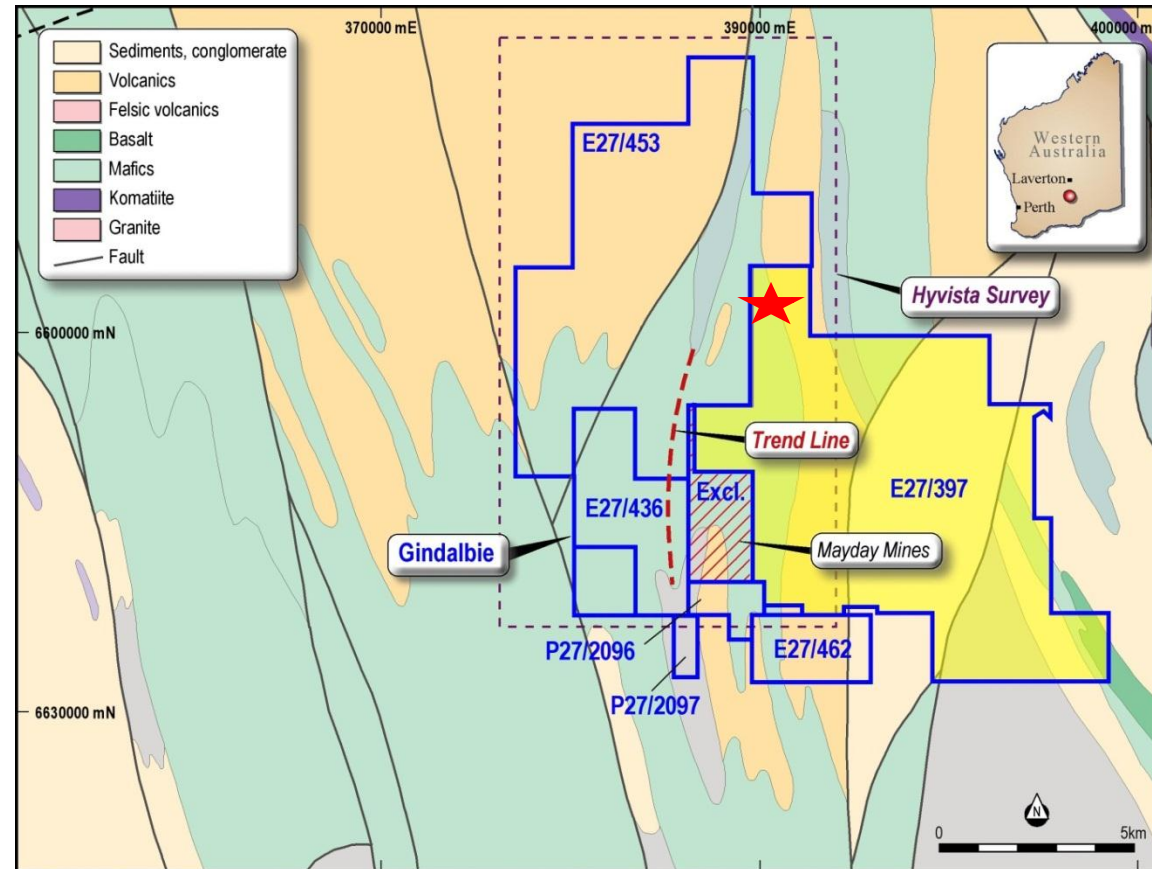


- **Project Holding 187km²**
- 15km of defined gold anomalies
- Thick underexplored mineralisation

Hole ID	From	Interval (m)	g/t Au	ppm Cu
THR 301	25	22	1.04	NA
THR 288	25	1	2.56	NA
THR 331	50	20	0.54	NA
WRC01	43	12	0.84	308
Including	53	1	1.79	2360
WRC03	32	28	0.86	182
WRC04	24	24	0.51	113
WRC06	24	24	0.39	99

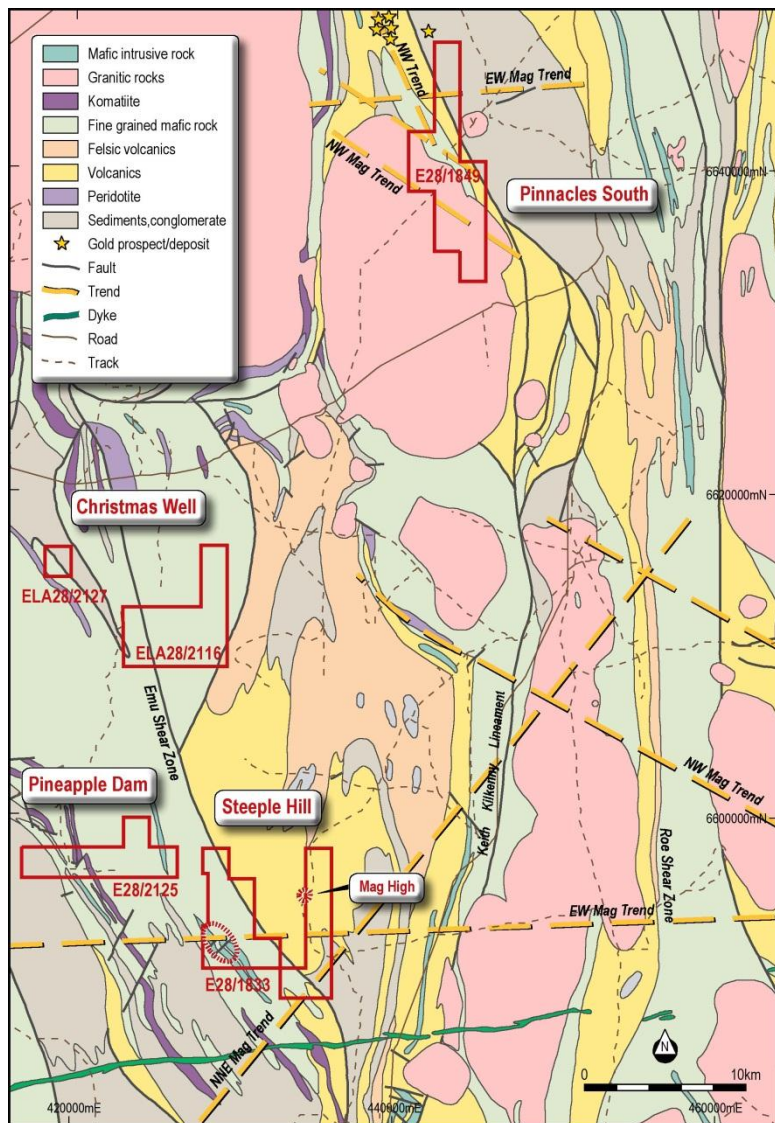
- RC holes scheduled (black ellipse)
- Both major leases granted
- 2400m RAB drilling completed

Gindalbie Project



- **Project Holding 150km²**
- 45km north of Glandore
- New Lease in Yellow
- **★ Chip samples up to 25 g/t**
- Prospects structures on sediment-greenstone contact
- On major lineaments
- PoW approved
- Hyvista survey completed

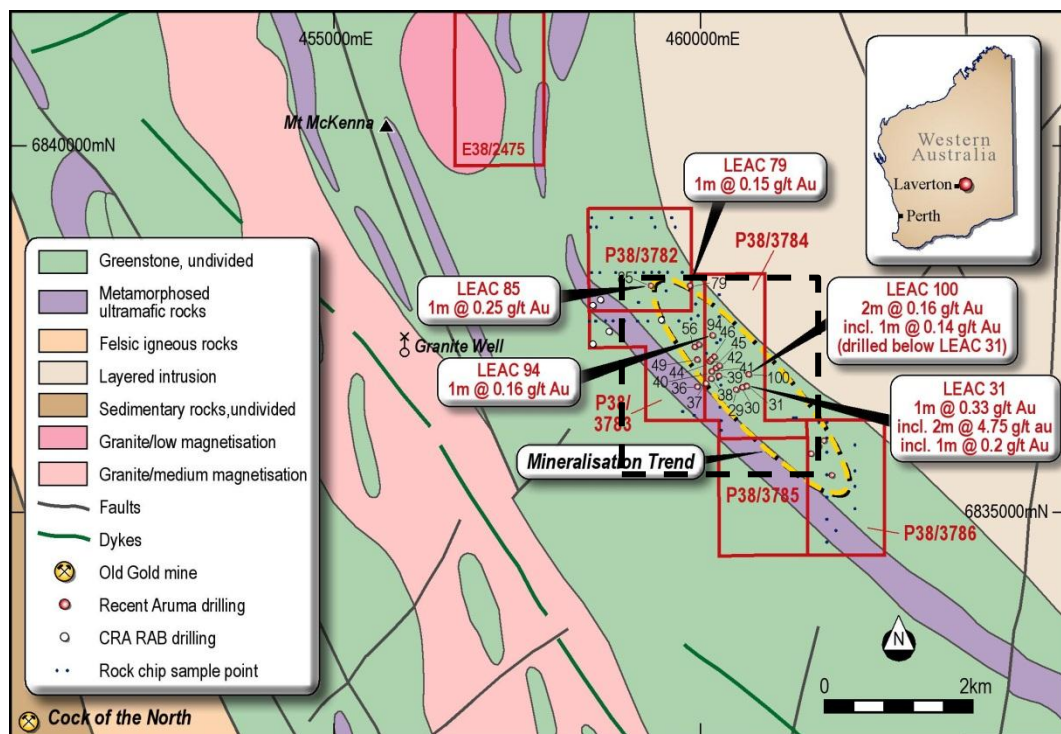
Kurnalpi South Project



Christmas Well, Pineapple Dam, Pinnacles South and Steeple Hill

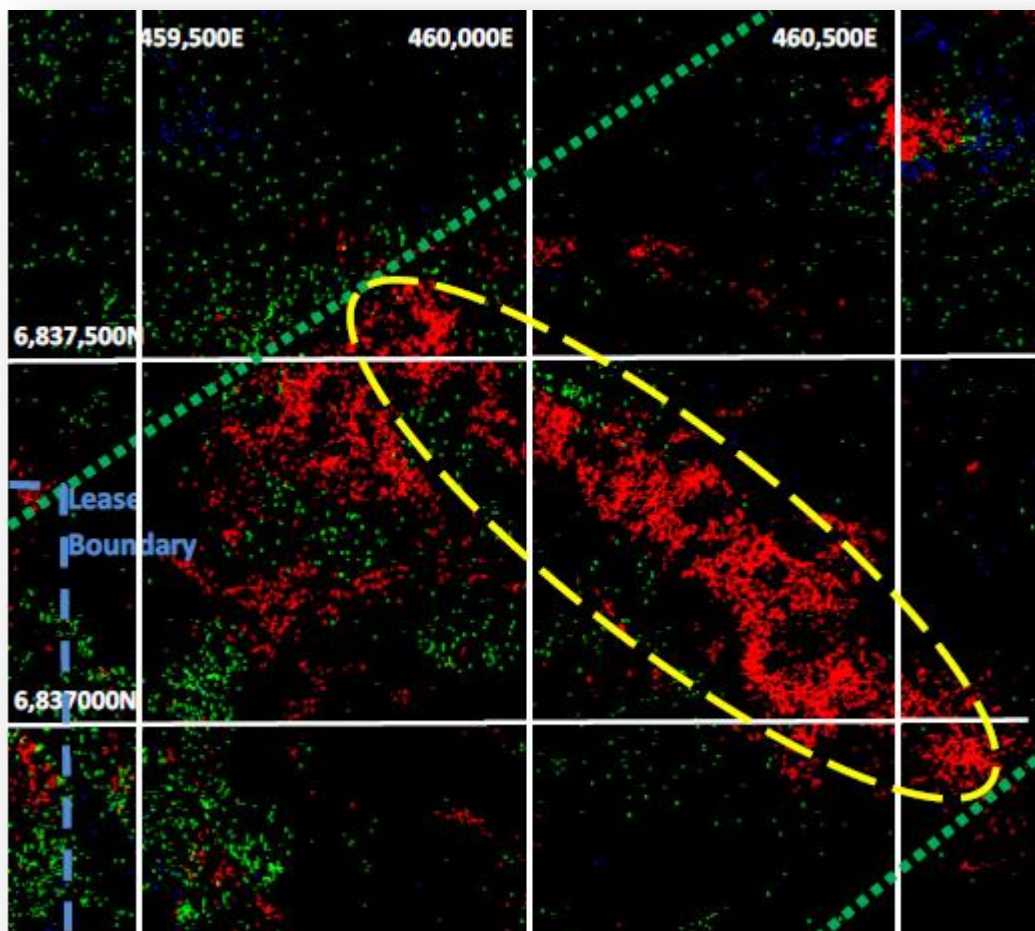
- 100km east of Kalgoorlie - Boulder
- Ni Cu Blebby sulphides at Steeple Hill
- Ni Cu Gossan on Pineapple Dam
- PoW submitted for Pinnacles South
- Large Projects north (Carosue) and south (Aldiss) indicate gold potential
- Strong Hyvista alteration effects
- Sulphur Rich area conducive to Gold
- Nickel and copper anomalies

Laverton East Project



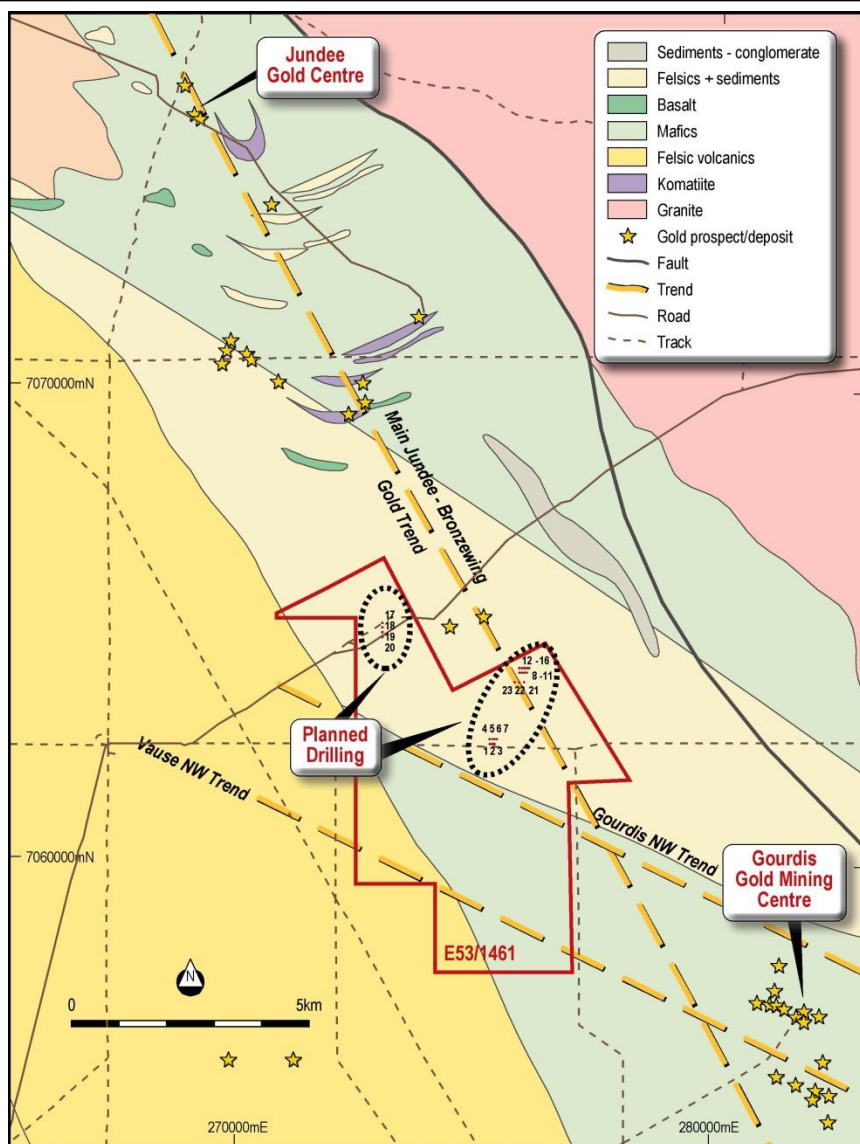
- New Lease Granted
- Leases under shallow cover
- Rock chips samples define mineralisation trend
- Hyvista maps goethite over Gold anomaly
- Next figure in black square
- Second pass drilling completed
- 2m at 4.28 g/t in LEAC 31

Laverton East Project – Hyvista Target



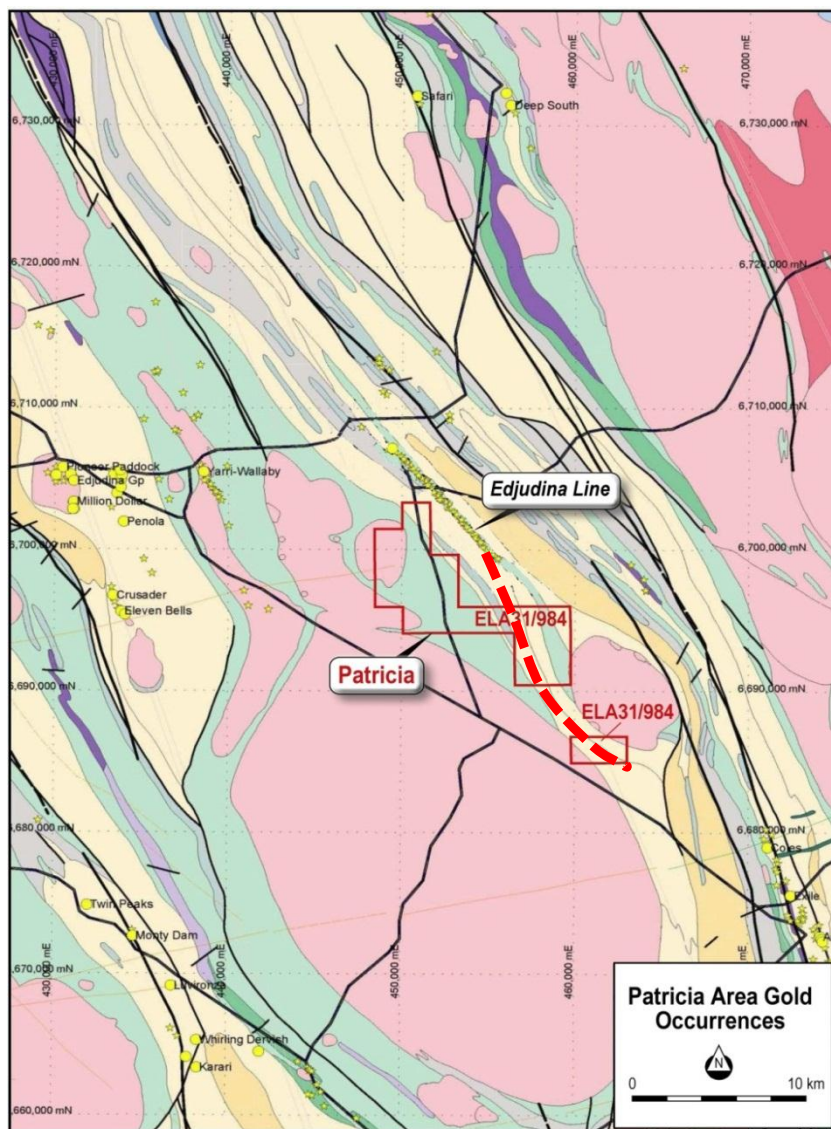
- Red anomaly is Goethite-Mica
- Anomaly is 1km by 150m
- Hyvista maps goethite over Gold anomaly
- Drilling program split in two
- Drilling program 667 of AC/RC over Hyvista and Geochem area
- 1981m of Aircore over Phase 2
- New Gold Zone with 2m at 4.28 g/t in LEAC 31
- Similar Hyvista anomalies in EL38/2475 to the North

Jundee South Project



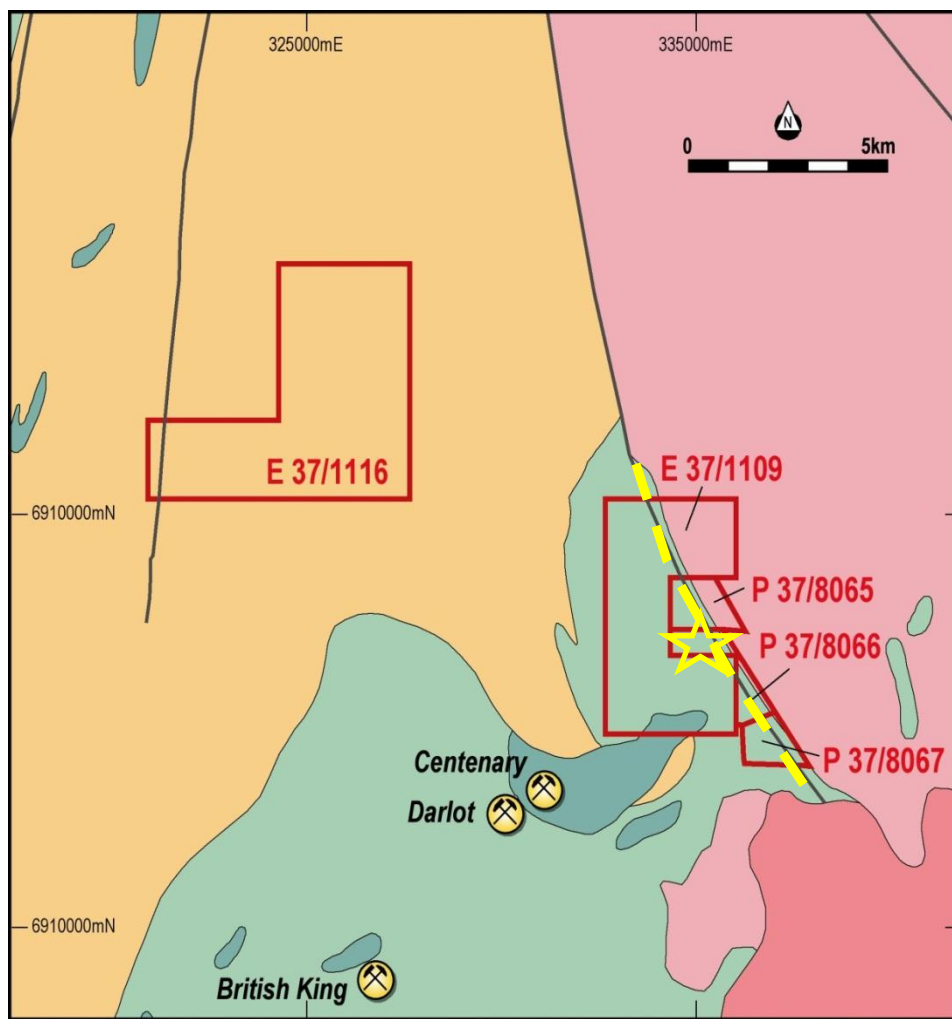
- Drilling completed in December
- Drilling verifies two soil anomalies
- Best gold assay of 1m at 18.6 g/t
- Gourdis - Vause Gold structure is extended to the west
- Structural Disruption sites Identified
- Gold Mineralisation evident in
 - Major structures
 - Geochemical anomalies
 - Carbonate quartz alteration

Patricia Project



- Magnetics that indicate a 5km extension to the Edjudina Line (Red Dashed Line)
- Under shallow soil cover, between granites
- On a major E-W structure that cuts the Patricia gold mine to the east
- Lease to be granted in July

Darlot East Project



- 4km east of multi million ounce Darlot Mine
- 7km Granite-Greenstone contact target
- Gold hits in 1989 RC holes



- RW 1 - 1m @ 3.27g/t from 18m
- RW 2 - 4m @ 2.1g/t from 18m**
- RW 3 - 1m @ 0.75g/t from 25m
- RW 4 - 2m @ 0.33g/t from 25m
- RW 5 - 1m @ 10.2g/t from 21m

** above 4m stope with 1m @ 0.83g/t below

- Has numerous old workings an the contact
- PoW submitted for Drilling

Aruma's progress to date



- Leases total 1000km²
- Fluid Flow and PoWs completed for Glandore
- Twin Hills option, PoW and clearing completed – drilling completed
- All new Projects now mapped by Hyvista with targets defined
- Drilling at Laverton East, Jundee South and Steeple Hill successful
- Drilling at Laverton East hits 2m at 4.28 g/t Au
- Drilling at Jundee South hits 18.6 g/t Au to be followed up
- Steeple Hill Blebby Sulphides of 0.31% Cu and 0.21% Ni backed up by PGM
- Heritage Survey scheduled at Glandore



Aruma's Work Timeline



2010

- July 23 – AAJ listed on ASX – Glandore PoW approved
- November – Glandore drilling results with 29/42 anomalous holes
11m @ 2.32g/t from surface

2011

- January – Glandore drilling results include 2m of 4.77g/t
23 of 26 holes anomalous
- February – >2km mineralised zone defined at Glandore
- May – CSIRO Fluid Dynamics Study initiated, MLs at Glandore Granted
- June – Drilling Laverton East, Darlot and Patricia applications,
- July – Bulong and Youno Downs ELs , 1st Phase drilling at Laverton East
- September – Second Phase drilling at Laverton and Steeple Hill drilled
- November – Hyvista flown on new leases
- December – Drilling at Jundee South and Fluid Flow Study completed
– Twin Hills and Gindalbie leases negotiated, PoWs submitted

2012

- January – Jundee South hits of 18.6 g/t Au, Blebby Sulphides at Steeple Hill
- February – Twin Hills drilling approved, sites cleared. Hyvista interpretations
- March – Twin Hills drilling, Jundee South Follow up Drilling
- April – Twin Hills drilling completed, Follow up Drilling PoWs in



Aruma's Next Steps

- **GLANDORE**
 - Fluid Flow Study defines targets on two major structures off the Majestic Structure
 - Initial drilling on the extension of the western target areas planned

- **TWIN HILLS**
 - RAB drilling on the extension of the northern lease anomalies completed April 2012
 - PoW for southern lease anomalies submitted

- **GINDALBIE**
 - PoW submitted on new eastern lease
 - Initial drilling on the eastern lease anomalies after heritage survey

- **KURNALPI SOUTH**
 - Follow up drill results at Steeple Hill blebby sulphides
 - Drill Au anomalies at Pinnacles South
 - Investigate Ni gossan at Pineapple Dam on grant

- **LAVERTON EAST and JUNDEE SOUTH**
 - RAB drilling over geochemistry and Hyvista anomalies
 - Follow up drilling at Jundee South anomalies

- **DARLOT**
 - PoW submitted on gold mineralisation from historical drilling at Rosewood Well

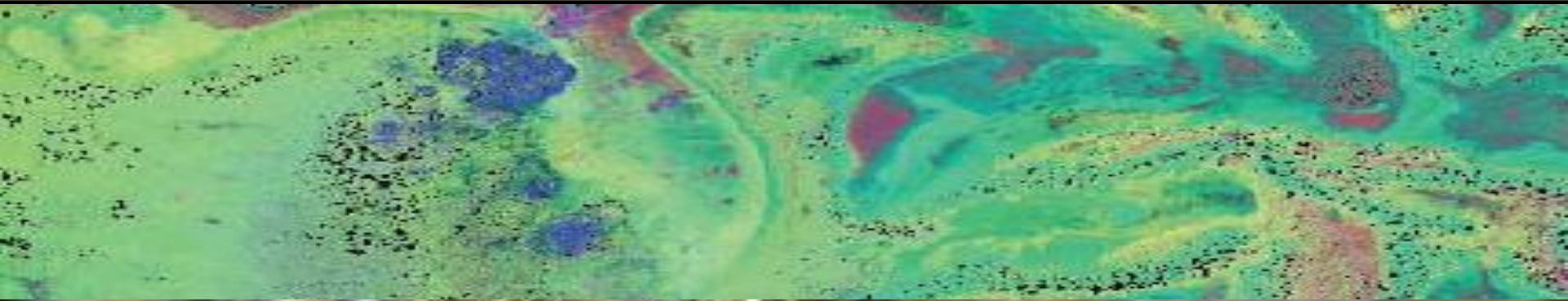
Company Summary



- Large prospective landholding in the proven Eastern Goldfields
- Projects strategically located adjacent to established gold producers
- Treasury at 19 April 2012 ~\$2.5M – current program well funded
- Steady progress:
 - Drilling hits Gold mineralisation
 - New Identified Gold Corridors
 - Ni Cu Identified at Steeple Hill
- **Strategic focus on resources to develop Glandore as regional gold production hub, with nearby satellites**



ARUMA RESOURCES



Thank you.