



---

## **EXPLORATION UPDATE**

---

### **Highlights**

- **Resplits at Jundee South include intersections of up to 4m at 15.37 g/t Au**
- **Resplits confirm thick mineralisation with medium to high grade intersections**
- **905m of RAB drilling at Jundee South completed in October 2012**
- **New drilling extends mineralisation at Jundee South**
- **HyMap and Historical Data define 1.5km long target**

---

**Western Australian gold explorer, Aruma Resources Limited (ASX: AAJ)** is pleased to confirm high grades at its Jundee South Gold Project.

Aruma has three advanced projects, **Jundee South**, **Glandore**, and **Gindalbie**. The current exploration program has been designed to prioritise scheduled drilling of defined targets to advance to resources. (See Figure 6 at the end of this announcement for Project Locations.)

The results from Jundee South will require drilling to define a JORC compliant Resource.

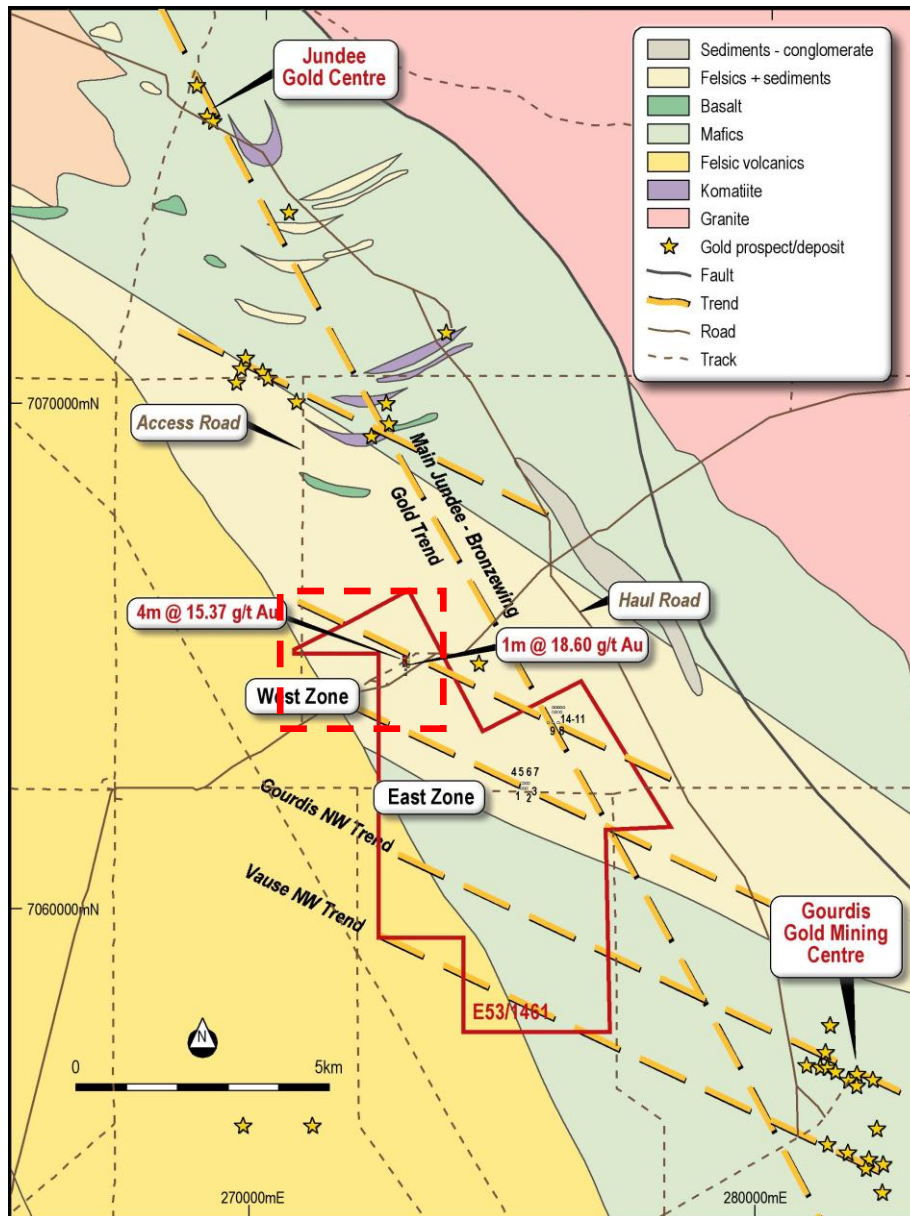
The culmination of two years scientific study at Glandore will also see the RC drilling of the two western Fluid Flow Targets in 2013.

### **PROGRESS REPORT**

#### **Jundee South Project**

Jundee South Project (E52/1461) is located 60km east of Wiluna and 25km south of the Jundee Mine. The October RAB program consisted of 905 m of RAB in 37 vertical drillholes on the Western Area to extend and follow up a previously reported 4m at 9.62g/t Au intersection in JSR 34. The mineralisation was discovered after following up previously identified soil anomalies that had not been drilled. One soil sample result produced a 16.5g/t Au value in the area near the current RAB area of mineralisation (Normandy Mining Limited, 1992).

The WNW trending lineaments are seen on the Figure 1 and reflect the structures that control the mineralisation at the nearby Gourdis and Vause Deposits. The complete tenement area has been evaluated again using geochemistry, structure and the Hymap/Magnetics in light of this discovery.



**Figure 1** Drilling Plan on Geology with Figures 2 and 3 area (Enlargement) shown

### Results from resplits of September Drilling

The significance of the September drill results were the shallow depths (from 4m), thickness (>48m to end of hole), high grades (4m at 9.32g/t) in JSR 34 and is open to the west. Hole JSR34 was mineralised from 4m to 52m (EOH) and the intersection was 48m at 1.47g/t.

### Aruma Resources Limited

ABN 77 141 335 364 ASX: AAJ  
Suite 33, 18 Stirling Highway, Nedlands WA 6009  
Locked Bag 2000, Nedlands WA 6909, Australia  
T+61 8 6389 1799 | F+61 8 6389 0112 | Wwww.arumaresources.com



The results of the resplits are listed below in Table 1. Of particular note is the high grade mineralisation in JSR034.

Hole	Easting	Northing	From	To	Interval	Au Ave
JSR033	272960	7065040	11	13	2	<b>2.91</b>
JSR033	272960	7065040	14	16	2	0.88
JSR033	272960	7065040	17	23	6	<b>2.26</b>
JSR033	272960	7065040	27	29	2	<b>1.25</b>
JSR033	272960	7065040	50	55	5	<b>1.63</b>
JSR034	272958	7064978	7	11	4	<b>15.37</b>
inc	272958	7064978	7	8	1	<b>59.8</b>
JSR034	272958	7064978	28	31	3	<b>1.00</b>
JSR034	272958	7064978	34	37	3	<b>1.35</b>
JSR034	272958	7064978	39	43	4	<b>2.25</b>
JSR034	272958	7064978	48	50	2	0.74
JSR035	272960	7064941	20	30	10	<b>1.53</b>
inc	272960	7064941	24	30	6	<b>2.06</b>
JSR037	273000	7064940	3	5	2	<b>1.69</b>
inc	273000	7064940	4	5	1	<b>2.9</b>
JSR037	273000	7064940	9	10	1	0.92

Note: All holes vertical and assays by Fire Assay 50g

**Table 1**      **1m Resplits of the August 2012 Drilling at Jundee South**

The resplits have defined the intersections as thick and with medium to high grades. The best intersection is in JSR034, with 12m of 6.58g/t, 17m of 1.87 g/t Au in JSR033, and 10m of 1.53 in JSR035. These intersections are down to a maximum depth of only 50m and are in soft oxidised dry clay material.

The RAB drilling to date has been to define a direction and extent for angled RC drilling. The drilled area of these intersections listed below is defining a NNE SSW part of a general WNW-ESE regional trend shown in Figure 2 below. This highly mineralised area is now some 40m by 100m (Blue Ellipse) within the 400m by 100m area of thick anomalous mineralisation and ready to be RC drilled on approval of the Programme of Work (PoW).

The mineralisation is in weathered Mafic/ultramafic with minor quartz veins and sediments, and consists of clays and limonite/goethite and is very soft down to 50 metres depth. The intersections in Table 2 below are the totals for the holes, and are not true widths or continuous as can be seen from Table 1, but are included to demonstrate the thickness and grade of mineralisation.



Hole	Easting	Northing	Total Interval (m)	Average g/t Au
JSR033	272960	7065040	17	1.87
JSR034	272958	7064978	12	6.58
JSR035	272960	7064941	10	1.53
JSR037	273000	7064940	3	1.43

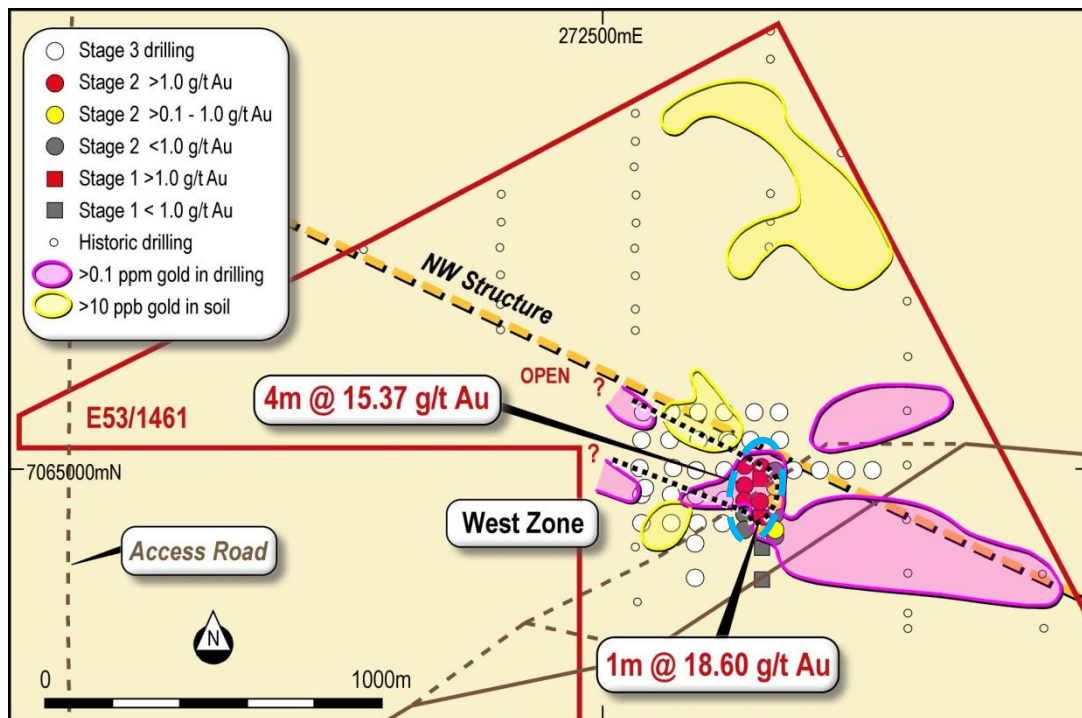
Note: All holes vertical and assays by Fire Assay 50g

**Table 2 Mineralisation in the RAB area**

**October Drilling**

The recent drilling program of 37 holes was designed to follow up the highly anomalous areas defined in the August 2012 drilling. This has extended the mineralisation from a 150m strike prior to RC drilling to 400m. The RC drilling PoW has been submitted and will test the known mineralisation as well as further test the extensions shown in Figure 2.

The results below are the latest drilling and confirm thick anomalous zones continuing to the NW in JSR063 with 16m at 0.41g/t Au from 12m (including 4m at 1.17g/t Au). These are from 4m composite samples and will be resampled to 1m samples in the coming weeks.



**Figure 2 Drilling location plan with Geochem and Drilling anomalies**

**Aruma Resources Limited**



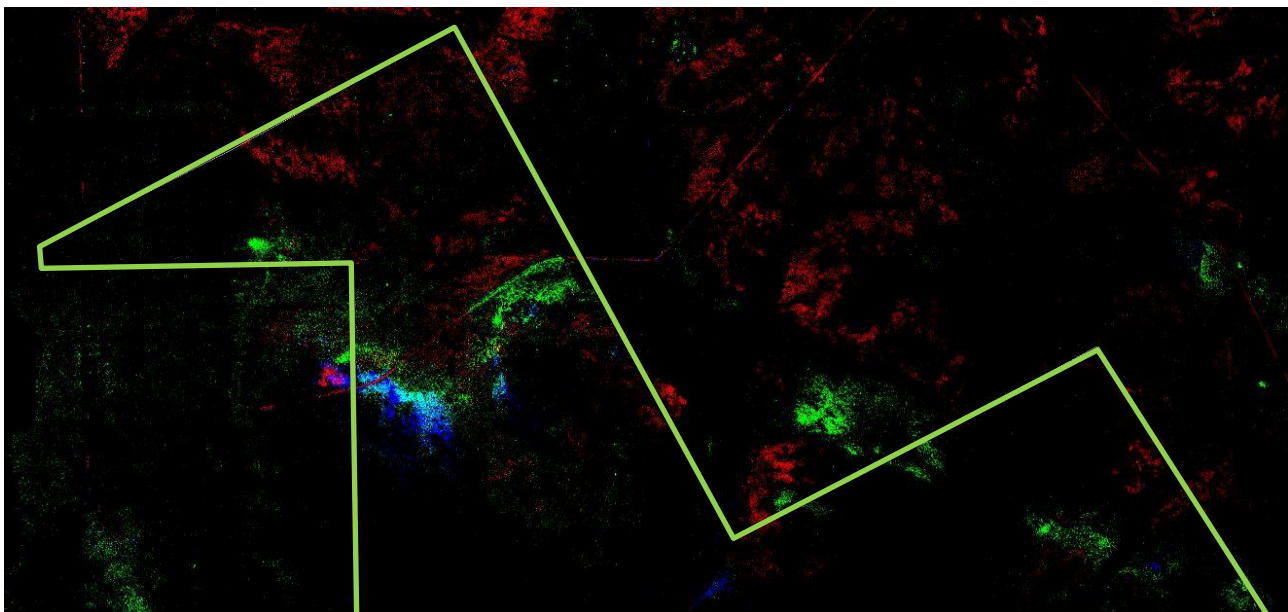
Hole	Easting	Northing	From	To	Interval	Average g/t Au
JSR050	272881	7065021	16	20	4	0.28
JSR053	272801	7064942	8	12	4	0.35
JSR053	272801	7064942	12	13	4	0.18
JSR059	272637	7065181	8	12	4	0.3
JSR063	272884	7064926	12	16	4	0.12
JSR063	272884	7064926	16	20	4	<b>1.17</b>
JSR063	272884	7064926	20	24	4	0.18
JSR063	272884	7064926	24	28	4	0.18
JSR063	272884	7064926	32	36	4	0.36
JSR063	272884	7064926	44	46	4	0.12
JSR066	272998	7064501	28	32	4	0.26

Note: All holes vertical and assays by Fire Assay 50g

**Table 3**      **Results >0.1 g/t Au from the latest drilling (4m composites)**

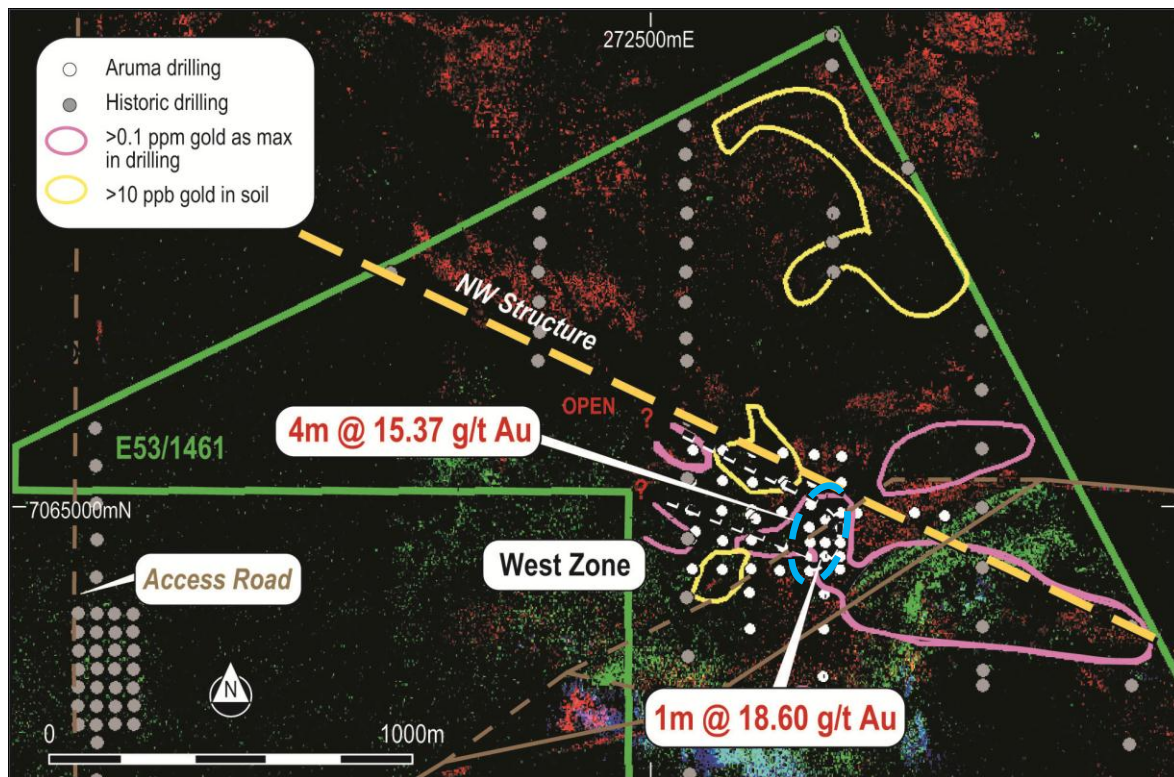
The Figure 4 below is the latest HyMap reinterpretation which shows a definite bend in the WNW regional trend which hosts the RAB mineralisation. The colours are defining the Goethite after Pyrite as RED with the Mica as GREEN and the alteration of Chlorite to Phengite by the Gold mineralising solution as BLUE.

The Lease area in the Northern part of E53/1461 is shown in yellow and the anomalies generated are easily seen to reflect mineralisation and structure.



**Figure 3**      **HyMap Anomalies in the Northern area of E53/1461**





**Figure 4** HyMap image with structure, geochemistry and RAB drilling mineralisation

The targets at Jundee South Gold Project now are of three types, namely:

1. Resource targets in the RAB Anomaly area (Figure 4);
2. Follow up targets under Drilling, HyMap and Geochemical anomalies (Figure 3); and
3. Regional HyMap and structural targets.

The previous drilling can now be seen to be shallow and wide spaced, and the HyMap structural trends from outside the lease are confirming the Gourdis and Vause structures.



**Figure 5** *Jundee South Overview with same legend as Figure 4 (purple/red outlines are drill holes with >0.1g/t Au, yellow outlines are >10ppb Au soil geochemistry)*

## Glandore Project

After 18 months of scientific study using HyMap, Fluid Flow Modelling, PIMA Analysis and magnetics, the Western Area has been cleared for drilling, and this will occur in the coming year.

---

### Aruma Resources Limited

ABN 77 141 335 364 ASX: AAJ  
Suite 33, 18 Stirling Highway, Nedlands WA 6009  
Locked Bag 2000, Nedlands WA 6909, Australia  
T+61 8 6389 1799 | F +61 8 6389 0112 | W [www.arumaresources.com](http://www.arumaresources.com)



## Gindalbie

The exploration at the Gindalbie will be completed this year with a RAB and Geochemical orientation program over the Lady Lauren. The Lady Lauren has been defined by both rock chip samples and the reinterpretation of HyMap.

## Laverton East

The Paul Well area will be investigated using the new HyMap interpretations completed recently.

ENDS

### For further information please contact:

Peter Schwann  
Managing Director  
Aruma Resources Limited  
Ph: +61 8 6389 1799  
Mobile: +61 417 946 370  
info@arumaresources.com

### Media:

Annette Ellis  
Cannings Purple  
Ph: +61 8 6314 6300

### Competent Person's Statement

*The information in this release that relates to Exploration Results, Mineral Resources or Ore Reserves is based on information compiled by Peter Schwann who is a Fellow of the Australasian Institute of Mining and Metallurgy and Chartered Professional (Geology). Mr Schwann is an employee of the Company.*

*Mr Schwann has sufficient relevant experience to qualify as a Competent Person as defined in the JORC Code (2004) and consents to the inclusion of this information in the form and context in which it appears.*

---

### Aruma Resources Limited

ABN 77 141 335 364 ASX: AAJ  
Suite 33, 18 Stirling Highway, Nedlands WA 6009  
Locked Bag 2000, Nedlands WA 6909, Australia  
T+61 8 6389 1799 | F +61 8 6389 0112 | W www.arumaresources.com



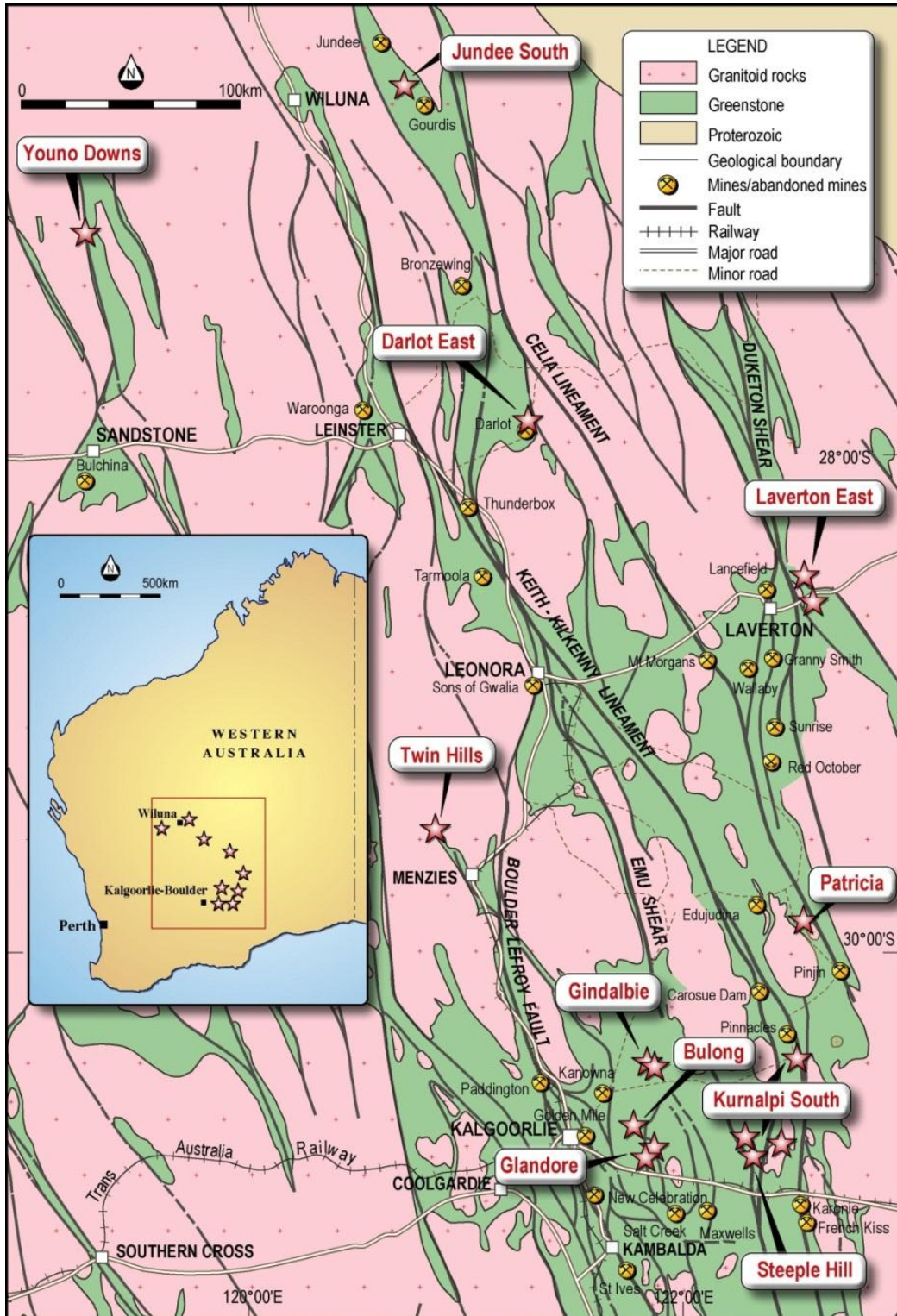


Figure 6: Aruma Resources' Project Locations

**Aruma Resources Limited**

ABN 77 141 335 364 ASX: AAJ  
Suite 33, 18 Stirling Highway, Nedlands WA 6009  
Locked Bag 2000, Nedlands WA 6909, Australia  
T+61 8 6389 1799 | F+61 8 6389 0112 | Wwww.arumaresources.com