

2<sup>nd</sup> August 2012

## *Further Old Pirate High Grade Drill Results*

### *5 metres averaging 52.27g/t gold & 8 metres averaging 24.14g/t gold*

ABM Resources NL ("ABM" or "The Company") is pleased to announce further results from extensional and infill drilling at the Company's Old Pirate High Grade Gold Deposit in the Northern Territory.

#### *Highlights from Drilling*

- Old Pirate South zone extended 90m down plunge in hole OPRC100036 with:
  - 8 metres averaging 24.14g/t gold.
- Western Limb Vein extensions at depth in OPRC100058 with:
  - 5 metres averaging 52.27g/t gold.
- Other Results from various drill holes include:
  - 8 metres averaging 3.22g/t gold;
  - 1 metre grading 18.70g/t gold;
  - 4 metres averaging 4.03g/t gold;
  - 3 metres averaging 4.33g/t gold;
  - 2 metres averaging 6.42g/t gold;
  - 1 metre grading 10.2g/t gold.

Darren Holden, Managing Director, said, "This excellent round of drill results from Old Pirate continues to add confidence and extends the Old Pirate High Grade Deposit. The overall grades, widths and location of the extensions are consistent with our geological and statistical models."

## ***Old Pirate Programs in 2012***

On 16 April 2012, ABM announced a high grade resource estimation at the Old Pirate Gold Deposit of 427,000 ounces of gold averaging 7.95g/t gold (top cut) or 565,000 ounces of gold averaging 10.5g/t gold (uncut). Following the resource estimation an initial independent scoping study for open pit mining was carried out and showed strong cash flows of \$257M over two years and an initial capital expenditure for a standalone gravity gold recovery plant of \$27.1M. The 2012 season has since focused on understanding the overall scale of the Old Pirate system with systematic surface sampling and drilling. To date the systematic surface sampling has yielded new extensions of the Western Limb and the identification of the new East Side vein (reported 16/07/2012 and 9/07/2012 respectively) as well as other new veins. In tandem with the exploration work the Company is conducting further mining studies including further metallurgical test work for gravity gold along with permitting for a trial mine / bulk sample.

Appendix 1 and Figure 1 show the results from the first round of drilling. In particular, hole OPRC100036 intersected a wide zone of mineralisation of 8 metres averaging 24.14g/t gold, which is a 90 metre down-plunge extension of the existing Old Pirate south anticline and resource area (Figure 1) and is outside the existing resource. Drilling on the Western Limb also yielded high grades with 5 metres averaging 52.27g/t gold intersected in OPRC100058. Whilst this hole was drilled within the existing resource area, it is also considered extensional as it links two previously modelled portions (in the resource estimation) of the Old Pirate Western Limb into a single high-grade geological structure.

The current drill program is still on-going with a further 55 holes for 7298 metres pending assay and 28 holes to be completed within the coming weeks. Following from this round of reverse circulation drilling the Company will be mobilising a diamond rig to site. This drill program will be followed by resource estimation updates and further mining studies. ABM also intends to drill test the Golden Hind discovery located 800 metres to the south of Old Pirate.

## ***Geological Characteristics of Old Pirate***

Old Pirate is a high grade narrow vein gold system. Gold is generally coarse, free gold (grains up to 3mm) hosted by mostly bedding-parallel quartz veins within a folded sedimentary shale and sandstone sequence. The veins are geologically continuous and have been mapped with strike lengths of up to 700 metres and range in widths from a few centimetres to greater than 5 metres. Gold is not evenly distributed throughout the veins and hence the small drill sample does not necessarily provide a consistent representation of the grade of the vein. This is known as the statistical "nugget effect". A drill intersection assay of less than 1g/t gold can be obtained from a much higher grade vein. Old Pirate, however, has the advantage of several veins outcropping at surface and as a result the systematic surface sampling has been an important innovation in assessing the overall grade of and distribution of gold within these veins.

The current drilling reported in this release displays overall consistent statistics with both the previous drill results and the surface sampling results. There are several zones of high grade along with other lower grade zones which also confirm the continuity of the veins. Using a 0.5g/t gold cut-off and normalised to 1 metre widths (g/t per metre) the intersections reported in this release have average grades of 8.59g/t gold per metre intersection. At 1g/t cut-off the drill assays have average grades of 12.23g/t gold per metre intersection.

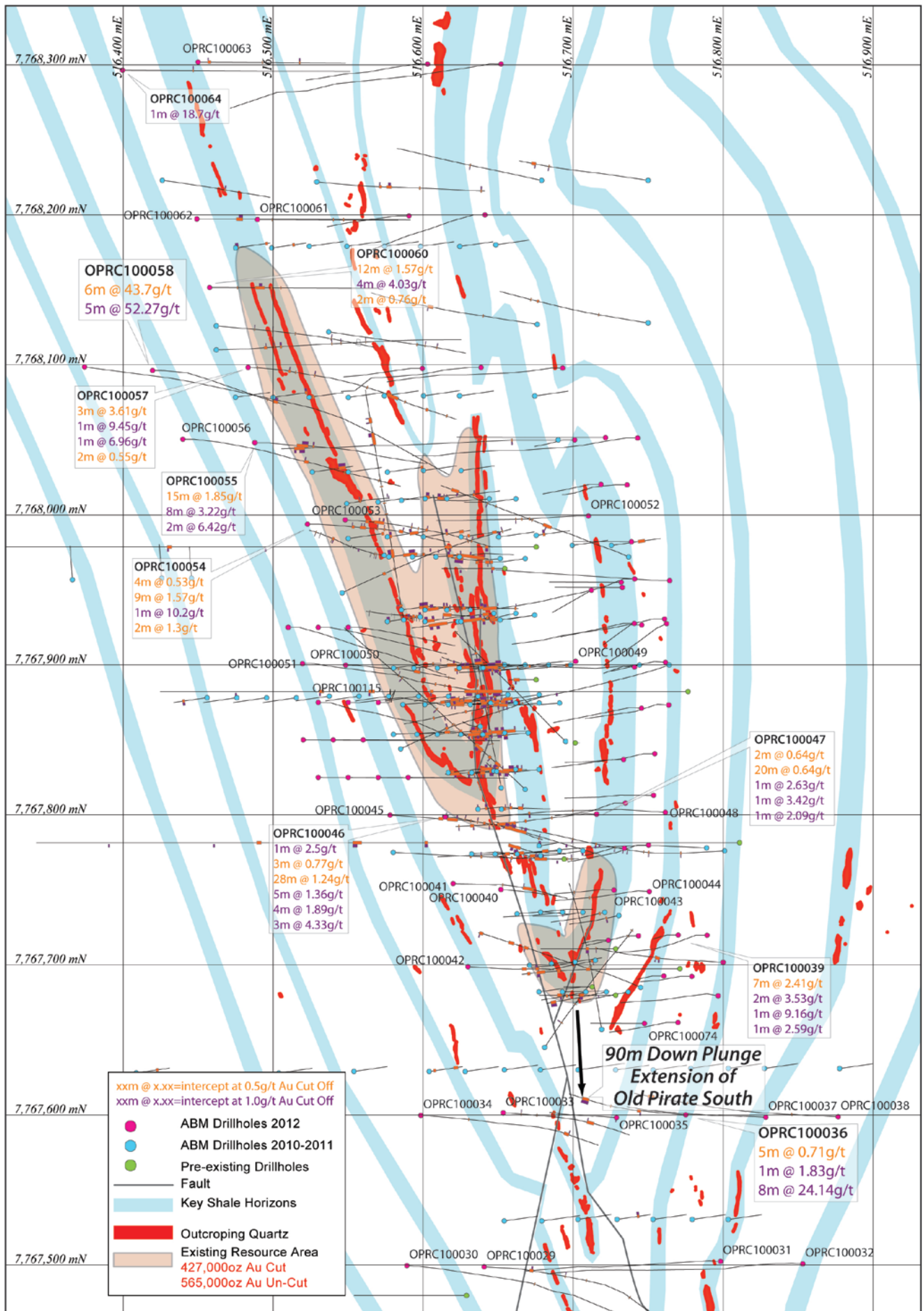


Figure 1. Map of drill intersections with 2012 results. Unlabelled 2012 drill holes are pending assay.

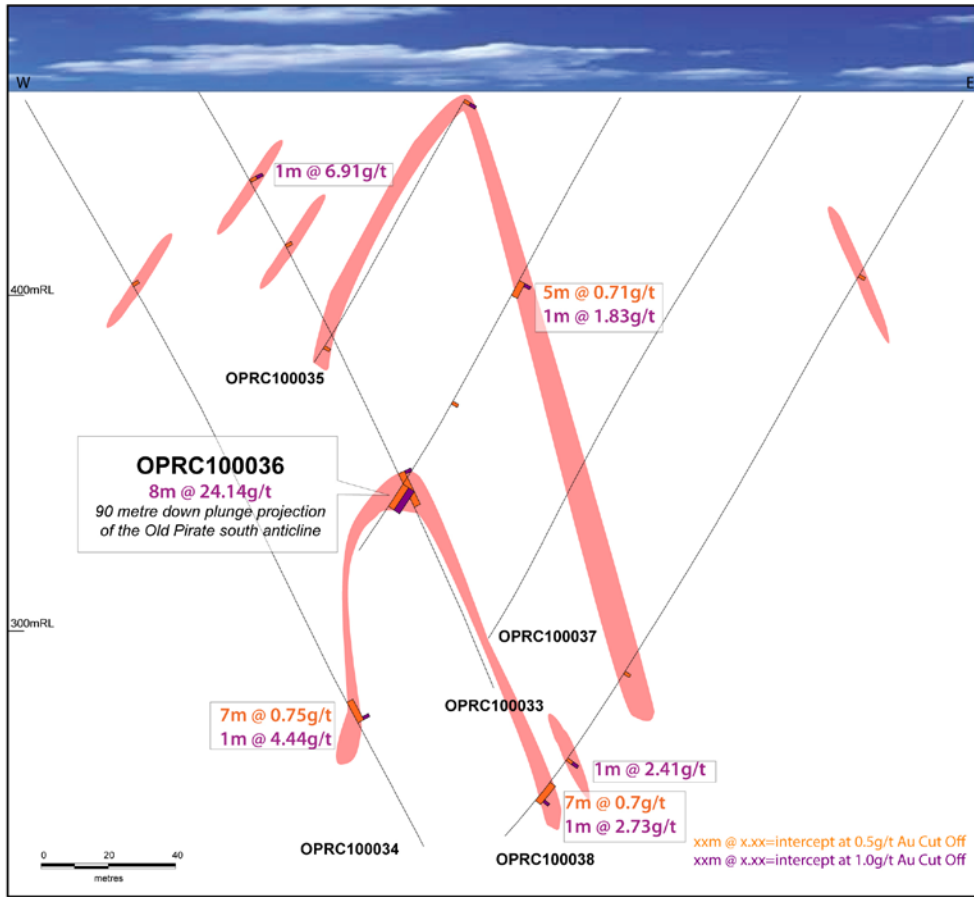


Figure 2. East West Cross-section showing high grade intersection in OPRC100036.

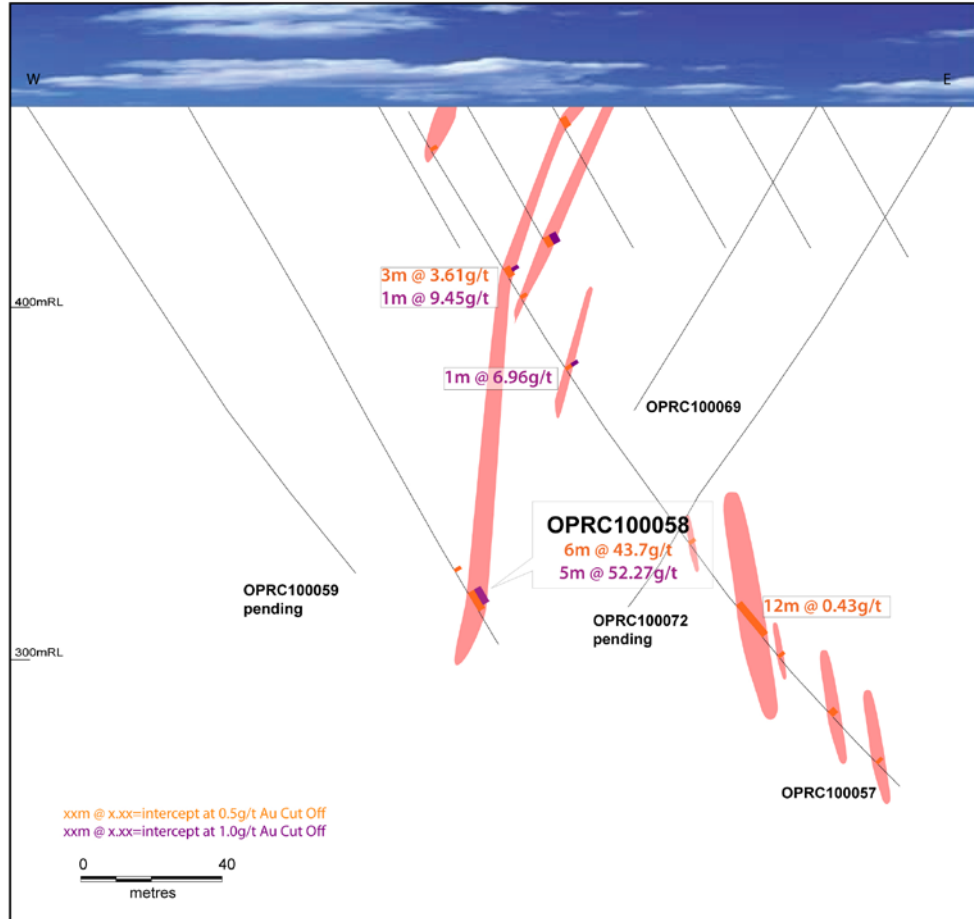


Figure 3. East West Cross-section showing high grade intercept in OPRC100058 on the Western Limb.

## About ABM Resources

ABM Resources is an exploration company developing several gold discoveries in the Tanami-Arunta region of the Northern Territory of Australia. The Company has a multi-tiered approach to exploration and development with a combination of high grade potentially short-term production scenarios such as Old Pirate, large scale discoveries such as Buccaneer, and regional exploration discoveries such as the Kroda Gold Project. In addition, ABM Resources is committed to regional exploration programs throughout its extensive holdings.

ABM Resources is well capitalised to achieve its milestones in 2012 and into 2013 with \$23M in cash (as of quarterly report dated 30 June 2012).

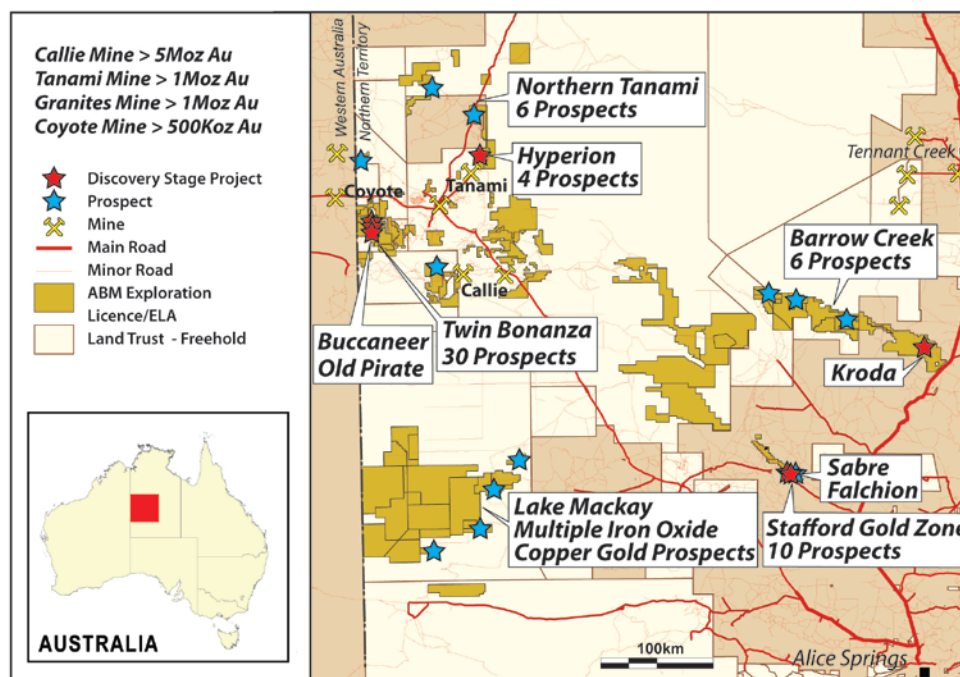


Figure 4. ABM Project Location Map Northern Territory.

Signed

Darren Holden – Managing Director

### Competent Persons Statement

*The information in this report that relates to Exploration Results, Mineral Resources or Ore Reserves is based on information compiled by Mr Darren Holden who is a Member of The Australasian Institute of Mining and Metallurgy. Mr Holden is a full time employee of ABM Resources NL and has sufficient experience which is relevant to the style of mineralisation and type of deposit under consideration and to the activity which he is undertaking to qualify as a Competent Person as defined in the 2004 Edition of the "Australasian Code for Reporting Exploration Results, Mineral Resources and Ore Reserves". Mr Holden consents to the inclusion in the documents of the matters based on this information in the form and context in which it appears.*

### For Further Information Please Contact

Jutta Zimmermann  
CFO / Company Secretary  
+61 8 9423 9777

Darren Holden  
Managing Director  
+61 8 9423 9777

Berdine Mastaglia  
Investor Relations Manager  
+61 8 9423 9777

APPENDIX 1. Details of 2012 drill results from the Old Pirate High Grade Deposit.

Table 1.1. Significant intercepts for holes OPRC100029, OPRC100033, OPRC100034, OPRC100035, OPRC100036, OPRC100038, OPRC100039, OPRC100041, OPRC100042, OPRC100045, OPRC100046, OPRC100047, OPRC100048, OPRC100049, OPRC100050, OPRC100051, OPRC100052, OPRC100053, OPRC100054, OPRC100055, OPRC100056, OPRC100057, OPRC100058, OPRC100060, OPRC100062, OPRC100063 and OPRC100064 at 1.0g/t cut-off.

Hole ID	Depth From (m)	Depth To (m)	Interval (m)	Gold (g/t)	gram metres (g/t * metres)
OPRC100058	163	168	5	52.27	261.35
OPRC100036	132	140	8	24.14	193.12
OPRC100055	62	70	8	3.22	25.76
OPRC100064	90	91	1	18.70	18.70
OPRC100060	64	68	4	4.03	16.12
OPRC100062	55	60	5	2.87	14.35
OPRC100046	106	109	3	4.33	12.99
OPRC100055	76	78	2	6.42	12.84
OPRC100054	80	81	1	10.20	10.20
OPRC100057	53	54	1	9.45	9.45
OPRC100039	92	93	1	9.16	9.16
OPRC100046	90	94	4	1.89	7.56
OPRC100053	50	52	2	3.60	7.20
OPRC100039	87	89	2	3.53	7.06
OPRC100057	85	86	1	6.96	6.96
OPRC100035	0	1	1	6.91	6.91
OPRC100046	81	86	5	1.36	6.80
OPRC100029	108	109	1	6.40	6.40
OPRC100042	99	102	3	1.79	5.37
OPRC100048	162	164	2	2.49	4.98
OPRC100034	209	210	1	4.44	4.44
OPRC100063	13	14	1	3.98	3.98
OPRC100047	125	126	1	3.42	3.42
OPRC100033	122	123	1	2.96	2.96
OPRC100029	62	64	2	1.47	2.94
OPRC100038	242	243	1	2.73	2.73
OPRC100050	99	100	1	2.65	2.65
OPRC100047	97	98	1	2.63	2.63
OPRC100039	173	174	1	2.59	2.59
OPRC100049	105	107	2	1.26	2.52
OPRC100046	27	28	1	2.50	2.50
OPRC100038	228	229	1	2.41	2.41
OPRC100051	138	139	1	2.39	2.39
OPRC100045	90	92	2	1.19	2.38
OPRC100056	150	151	1	2.37	2.37
OPRC100045	78	79	1	2.35	2.35
OPRC100047	158	159	1	2.09	2.09
OPRC100045	118	119	1	2.06	2.06
OPRC100046	102	103	1	1.97	1.97
OPRC100054	100	101	1	1.95	1.95

Hole ID	Depth From (m)	Depth To (m)	Interval (m)	Gold (g/t)	gram metres (g/t * metres)
OPRC100036	62	63	1	1.83	1.83
OPRC100046	1	2	1	1.81	1.81
OPRC100054	110	111	1	1.66	1.66
OPRC100047	110	111	1	1.58	1.58
OPRC100054	138	139	1	1.49	1.49
OPRC100041	96	97	1	1.42	1.42
OPRC100045	71	72	1	1.42	1.42
OPRC100063	117	118	1	1.30	1.30
OPRC100052	90	91	1	1.25	1.25
OPRC100053	45	46	1	1.24	1.24
OPRC100045	164	165	1	1.23	1.23
OPRC100053	88	89	1	1.18	1.18
OPRC100053	158	159	1	1.17	1.17
OPRC100033	24	25	1	1.15	1.15
OPRC100047	142	143	1	1.11	1.11
OPRC100054	62	63	1	1.08	1.08
OPRC100054	76	77	1	1.05	1.05
OPRC100045	199	200	1	1.04	1.04
OPRC100053	108	109	1	1.02	1.02
				Average	12.23

Significant intercepts calculated for holes OPRC100029, OPRC100033, OPRC100034, OPRC100035, OPRC100036, OPRC100038, OPRC100039, OPRC100041, OPRC100042, OPRC100045, OPRC100046, OPRC100047, OPRC100048, OPRC100049, OPRC100050, OPRC100051, OPRC100052, OPRC100053, OPRC100054, OPRC100055, OPRC100056, OPRC100057, OPRC100058, OPRC100060, OPRC100062, OPRC100063 and OPRC100064 at a 1.0g/t gold cut-off, minimum 1 metre width and maximum 2 metre internal dilution. Samples processed at ALS Global Laboratories in Alice Springs (NT) and Perth (WA) using Fire Assay for gold.

**Table 1.2. Significant intercepts for holes OPRC100029, OPRC100030, OPRC100033, OPRC100034, OPRC100035, OPRC100036, OPRC100038, OPRC100039, OPRC100040, OPRC100041, OPRC100042, OPRC100043, OPRC100044, OPRC100045, OPRC100046, OPRC100047, OPRC100048, OPRC100049, OPRC100050, OPRC100051, OPRC100052, OPRC100053, OPRC100054, OPRC100055, OPRC100056, OPRC100057, OPRC100058, OPRC100060, OPRC100061, OPRC100062, OPRC100063 and OPRC100064 at 0.5g/t cut-off.**

Hole ID	Depth From (m)	Depth To (m)	Interval (m)	Gold (g/t)	gram metres (g/t * metres)
OPRC100058	163	169	6	43.70	262.20
OPRC100036	132	140	8	24.14	193.12
OPRC100046	81	109	28	1.24	34.72
OPRC100055	55	70	15	1.85	27.75
OPRC100060	59	71	12	1.57	18.84
OPRC100064	90	91	1	18.70	18.70
OPRC100039	87	94	7	2.41	16.87
OPRC100062	52	60	8	2.00	16.00
OPRC100054	74	83	9	1.57	14.13
OPRC100055	76	78	2	6.42	12.84
OPRC100047	97	117	20	0.64	12.80
OPRC100057	52	55	3	3.61	10.83
OPRC100053	39	52	13	0.71	9.23

Hole ID	Depth From (m)	Depth To (m)	Interval (m)	Gold (g/t)	gram metres (g/t * metres)
OPRC100045	78	92	14	0.63	8.82
OPRC100057	85	86	1	6.96	6.96
OPRC100035	0	1	1	6.91	6.91
OPRC100029	108	109	1	6.40	6.40
OPRC100042	99	104	5	1.27	6.35
OPRC100033	122	133	11	0.57	6.27
OPRC100056	150	155	5	1.12	5.60
OPRC100034	203	210	7	0.75	5.25
OPRC100057	169	181	12	0.43	5.16
OPRC100048	162	164	2	2.49	4.98
OPRC100050	93	101	8	0.62	4.96
OPRC100063	13	17	4	1.23	4.92
OPRC100038	237	244	7	0.70	4.90
OPRC100029	60	65	5	0.97	4.85
OPRC100036	62	67	5	0.71	3.55
OPRC100047	125	126	1	3.42	3.42
OPRC100054	110	112	2	1.30	2.60
OPRC100039	173	174	1	2.59	2.59
OPRC100049	105	107	2	1.26	2.52
OPRC100046	27	28	1	2.50	2.50
OPRC100038	228	229	1	2.41	2.41
OPRC100051	138	139	1	2.39	2.39
OPRC100046	53	56	3	0.77	2.31
OPRC100054	62	66	4	0.53	2.12
OPRC100047	158	159	1	2.09	2.09
OPRC100045	118	119	1	2.06	2.06
OPRC100054	100	101	1	1.95	1.95
OPRC100046	1	2	1	1.81	1.81
OPRC100051	190	192	2	0.82	1.64
OPRC100060	79	81	2	0.76	1.52
OPRC100053	107	109	2	0.76	1.52
OPRC100063	117	118	1	1.30	1.30
OPRC100047	85	87	2	0.64	1.28
OPRC100052	90	91	1	1.25	1.25
OPRC100053	88	89	1	1.18	1.18
OPRC100053	158	159	1	1.17	1.17
OPRC100033	24	25	1	1.15	1.15
OPRC100057	210	212	2	0.55	1.10
OPRC100045	199	200	1	1.04	1.04
OPRC100058	155	156	1	0.99	0.99
OPRC100062	177	178	1	0.94	0.94
OPRC100038	197	198	1	0.92	0.92
OPRC100056	235	236	1	0.89	0.89
OPRC100060	36	37	1	0.87	0.87
OPRC100057	61	62	1	0.87	0.87
OPRC100052	74	75	1	0.84	0.84
OPRC100048	113	114	1	0.83	0.83



Hole ID	Depth From (m)	Depth To (m)	Interval (m)	Gold (g/t)	gram metres (g/t * metres)
OPRC100057	230	231	1	0.80	0.80
OPRC100045	109	110	1	0.78	0.78
OPRC100033	46	47	1	0.78	0.78
OPRC100050	140	141	1	0.77	0.77
OPRC100038	60	61	1	0.77	0.77
OPRC100053	97	98	1	0.75	0.75
OPRC100029	201	202	1	0.75	0.75
OPRC100064	1	2	1	0.74	0.74
OPRC100051	203	204	1	0.74	0.74
OPRC100052	83	84	1	0.73	0.73
OPRC100035	84	85	1	0.72	0.72
OPRC100057	146	147	1	0.68	0.68
OPRC100057	188	189	1	0.68	0.68
OPRC100062	166	167	1	0.67	0.67
OPRC100050	72	73	1	0.66	0.66
OPRC100030	168	169	1	0.65	0.65
OPRC100044	81	82	1	0.61	0.61
OPRC100036	103	104	1	0.60	0.60
OPRC100029	138	139	1	0.60	0.60
OPRC100061	19	20	1	0.59	0.59
OPRC100043	52	53	1	0.58	0.58
OPRC100047	56	57	1	0.57	0.57
OPRC100045	135	136	1	0.57	0.57
OPRC100057	12	13	1	0.56	0.56
OPRC100049	74	75	1	0.56	0.56
OPRC100046	66	67	1	0.56	0.56
OPRC100060	91	92	1	0.55	0.55
OPRC100034	63	64	1	0.55	0.55
OPRC100063	79	80	1	0.54	0.54
OPRC100040	57	58	1	0.54	0.54
OPRC100056	197	198	1	0.52	0.52
OPRC100041	69	70	1	0.52	0.52
OPRC100051	246	247	1	0.51	0.51
OPRC100045	147	148	1	0.50	0.50
				Average	8.59

Significant intercepts calculated for holes OPRC100029, OPRC100030, OPRC100033, OPRC100034, OPRC100035, OPRC100036, OPRC100038, OPRC100039, OPRC100040, OPRC100041, OPRC100042, OPRC100043, OPRC100044, OPRC100045, OPRC100046, OPRC100047, OPRC100048, OPRC100049, OPRC100050, OPRC100051, OPRC100052, OPRC100053, OPRC100054, OPRC100055, OPRC100056, OPRC100057, OPRC100058, OPRC100060, OPRC100061, OPRC100062, OPRC100063 and OPRC100064 at a 0.5g/t gold cut-off, minimum 1 metre width and maximum 5 metre internal dilution. Samples processed at ALS Global Laboratories in Alice Springs (NT) and Perth (WA) using Fire Assay for gold.

Appendix 2. Drill hole details for 2012 drilling to date at the Old Pirate Deposit.

Hole ID	Prospect	Easting (m)	Northing (m)	Elevation above sea level	Inclination (degrees)	Azimuth (degrees)	Depth (metres)	Target Zone	Results Status
OPRC100029	Old Pirate	516640	7767500	454	-60	90	258	Old Pirate South Southern Extension Hinge Zone	Released
OPRC100030	Old Pirate	516590	7767500	454	-60	90	350	Old Pirate South Southern Extension Hinge Zone & Western Limb	Released
OPRC100031	Old Pirate	516800	7767500	454	-60	270	250	Old Pirate South Southern Extension Hinge Zone	Pending
OPRC100032	Old Pirate	516850	7767500	454	-60	270	288	Old Pirate South Southern Extension Hinge Zone & Eastern Limb	Released
OPRC100033	Old Pirate	516650	7767600	454	-60	90	192	Old Pirate South Southern Extension Hinge Zone	Released
OPRC100034	Old Pirate	516600	7767600	454	-60	90	252	Old Pirate South Southern Extension Hinge Zone & Western Limb	Released
OPRC100035	Old Pirate	516725	7767600	454	-60	270	90	Old Pirate South Southern Extension Hinge Zone	Released
OPRC100036	Old Pirate	516775	7767600	454	-60	270	156	Old Pirate South Southern Extension Hinge Zone	Released
OPRC100037	Old Pirate	516825	7767600	454	-60	270	186	Old Pirate South Southern Extension Hinge Zone & Eastern Limb	Released
OPRC100038	Old Pirate	516875	7767600	454	-60	270	258	Old Pirate South Southern Extension Hinge Zone & Eastern Limb	Released
OPRC100039	Old Pirate	516800	7767700	454	-60	270	174	Old Pirate South Eastern Limb	Released
OPRC100040	Old Pirate	516650	7767750	454	-60	90	78	Old Pirate South Hinge Zone	Released
OPRC100041	Old Pirate	516620	7767750	454	-60	90	150	Old Pirate Hinge Zone & Western Limb	Released
OPRC100042	Old Pirate	516630	7767700	454	-60	90	126	Old Pirate Hinge Zone	Released
OPRC100043	Old Pirate	516725	7767750	454	-60	270	78	Old Pirate Hinge Zone	Released
OPRC100044	Old Pirate	516750	7767750	454	-60	270	126	Old Pirate Eastern Limb	Released
OPRC100045	Old Pirate	516575	7767800	454	-60	90	204	Old Pirate Western Limb	Released
OPRC100046	Old Pirate	516615	7767800	454	-60	90	204	Old Pirate Hinge Zone	Released
OPRC100047	Old Pirate	516715	7767800	454	-60	270	162	Old Pirate Eastern Limb	Released
OPRC100048	Old Pirate	516760	7767800	454	-60	270	500	Old Pirate Eastern Limb	Released
OPRC100049	Old Pirate	516700	7767900	454	-60	266.5	150	Old Pirate Eastern Limb	Released
OPRC100050	Old Pirate	516700	7767900	454	-60	86.5	150	Old Pirate Western Limb	Released
OPRC100051	Old Pirate	516520	7767900	454	-60	86.5	252	Old Pirate Western Limb & Hinge Zone	Released
OPRC100052	Old Pirate	516711	7767802	454	-60	266.5	180	Old Pirate Eastern Limb	Released
OPRC100053	Old Pirate	516551	7768000	454	-60	90	174	Old Pirate Western Limb	Released
OPRC100054	Old Pirate	516520	7768001	454	-60	86.5	198	Old Pirate Western Limb	Released

Hole ID	Prospect	Easting (m)	Northing (m)	Elevation above sea level	Inclination (degrees)	Azimuth (degrees)	Depth (metres)	Target Zone	Results Status
OPRC100055	Old Pirate	516491	7768048	454	-60	86.5	222	Old Pirate Western Limb & Hinge Zone	Released
OPRC100056	Old Pirate	516442	7768050	454	-60	86.5	258	Old Pirate Western Limb & Hinge Zone	Released
OPRC100057	Old Pirate	516483	7767999	454	-60	88.5	240	Old Pirate Western Limb	Released
OPRC100058	Old Pirate	516421	7768099	454	-60	87	180	Old Pirate Western Limb	Released
OPRC100059	Old Pirate	516375	7768100	454	-60	90	400	Old Pirate Western Limb	Pending
OPRC100060	Old Pirate	516460	7768150	454	-60	86.5	198	Old Pirate North Western Limb	Released
OPRC100061	Old Pirate	516490	7768200	454	-60	86.5	162	Old Pirate North Western Limb	Released
OPRC100062	Old Pirate	516450	7768200	454	-60	86.5	250	Old Pirate North Western Limb	Released
OPRC100063	Old Pirate	516450	7768300	454	-60	86.6	160	Old Pirate North Western Limb	Released
OPRC100064	Old Pirate	516400	7768300	454	-60	86.5	276	Old Pirate North Western Limb	Released
OPRC100065	Old Pirate	516600	7768300	454	-60	266.5	150	Old Pirate North Eastern Limb	Pending
OPRC100066	Old Pirate	516650	7768300	454	-60	266.5	300	Old Pirate North Eastern Limb	Pending
OPRC100067	Old Pirate	516640	7768200	454	-60	266.5	150	Old Pirate North Eastern Limb	Pending
OPRC100068	Old Pirate	516590	7768200	454	-60	266.5	102	Old Pirate North Eastern Limb	Pending
OPRC100069	Old Pirate	516600	7768100	454	-60	266.6	102	Old Pirate Eastern Limb & Hinge Zone	Released
OPRC100070	Old Pirate	516690	7768100	454	-60	266.5	228	Old Pirate Eastern Limb & Hinge Zone	Pending
OPRC100071	Old Pirate	516740	7768050	454	-60	266.5	306	Old Pirate Hinge Zone	Pending
OPRC100072	Old Pirate	516640	7768100	454	-60	266.5	174	Old Pirate Hinge Zone	Pending
OPRC100074	Old Pirate	516745	7767660	452	-60	266.5	72	Old Pirate South Eastern Limb	Pending
OPRC100075	Old Pirate	516765	7767660	452	-60	266.5	96	Old Pirate South Eastern Limb	Pending
OPRC100076	Old Pirate	516759	7767690	452	-60	266.5	36	Old Pirate South Eastern Limb	Pending
OPRC100077	Old Pirate	516779	7767690	452	-60	266.5	72	Old Pirate South Eastern Limb	Pending
OPRC100078	Old Pirate	516799	7767690	452	-60	276.5	126	Old Pirate South Eastern Limb	Pending
OPRC100079	Old Pirate	516725	7767720	452	-60	266.5	36	Old Pirate South Eastern Limb & Hinge Zone	Pending
OPRC100080	Old Pirate	516745	7767720	452	-60	266.5	72	Old Pirate South Eastern Limb & Hinge Zone	Pending
OPRC100081	Old Pirate	516772	7767720	452	-60	266.5	36	Old Pirate South Eastern Limb	Pending
OPRC100082	Old Pirate	516792	7767720	452	-60	266.5	126	Old Pirate South Eastern Limb	Pending
OPRC100083	Old Pirate	516729	7767780	452	-60	266.5	54	Old Pirate Eastern Limb & Hinge Zone	Pending
OPRC100084	Old Pirate	516749	7767780	452	-60	266.5	108	Old Pirate Eastern Limb & Hinge Zone	Pending
OPRC100085	Old Pirate	516737	7767810	452	-60	266.5	96	Old Pirate Eastern Limb	Pending
OPRC100086	Old Pirate	516737	7767840	452	-60	266.5	96	Old Pirate Eastern Limb	Pending
OPRC100087	Old Pirate	516757	7767840	452	-60	266.5	120	Old Pirate Eastern Limb	Pending
OPRC100088	Old Pirate	516757	7767810	452	-60	266.5	114	Old Pirate Eastern Limb	Pending

Hole ID	Prospect	Easting (m)	Northing (m)	Elevation above sea level	Inclination (degrees)	Azimuth (degrees)	Depth (metres)	Target Zone	Results Status
OPRC100089	Old Pirate	516742	7767870	452	-60	270	108	Old Pirate Eastern Limb	Pending
OPRC100090	Old Pirate	516762	7767870	452	-60	270	108	Old Pirate Eastern Limb	Pending
OPRC100091	Old Pirate	516741	7767900	452	-60	270	42	Old Pirate Eastern Limb	Pending
OPRC100092	Old Pirate	516761	7767900	452	-60	270	72	Old Pirate Eastern Limb	Pending
OPRC100093	Old Pirate	516739	7767930	452	-60	266.5	96	Old Pirate Eastern Limb	Pending
OPRC100094	Old Pirate	516739	7767930	452	-60	266.5	60	Old Pirate Eastern Limb	Pending
OPRC100095	Old Pirate	516759	7767930	452	-60	266.5	198	Old Pirate Eastern Limb	Pending
OPRC100096	Old Pirate	516759	7767930	452	-60	241.5	102	Old Pirate Eastern Limb	Pending
OPRC100097	Old Pirate	516738	7767960	452	-60	266.5	198	Old Pirate Eastern Limb	Pending
OPRC100098	Old Pirate	516758	7767960	452	-60	266.5	240	Old Pirate Eastern Limb	Pending
OPRC100099	Old Pirate	516737	7767990	452	-60	266.5	78	Old Pirate Eastern Limb	Pending
OPRC100100	Old Pirate	516737	7767990	452	-60	236.5	60	Old Pirate Eastern Limb	Pending
OPRC100101	Old Pirate	516757	7767990	452	-60	266.5	96	Old Pirate Eastern Limb	Pending
OPRC100102	Old Pirate	516757	7767990	452	-60	266.5	90	Old Pirate Eastern Limb	Pending
OPRC100103	Old Pirate	516716	7768020	452	-60	266.5	78	Old Pirate Eastern Limb	Pending
OPRC100104	Old Pirate	516736	7768020	452	-60	266.5	90	Old Pirate Eastern Limb	Pending
OPRC100105	Old Pirate	516701	7768050	452	-60	266.5	54	Old Pirate Eastern Limb	Pending
OPRC100106	Old Pirate	516721	7768050	452	-60	266.5	198	Old Pirate Eastern Limb	Pending
OPRC100107	Old Pirate	516590	7767825	452	-60	86.5	72	Old Pirate Western Limb	Pending
OPRC100108	Old Pirate	516570	7767825	452	-60	86.5	150	Old Pirate Western Limb	Pending
OPRC100109	Old Pirate	516550	7767825	452	-60	86.5	180	Old Pirate Western Limb	Pending
OPRC100110	Old Pirate	516530	7767825	452	-60	86.5	252	Old Pirate Western Limb	Pending
OPRC100111	Old Pirate	516560	7767850	452	-60	86.5	90	Old Pirate Western Limb	Pending
OPRC100112	Old Pirate	516540	7767850	454	-60	86.5	222	Old Pirate Western Limb	Pending
OPRC100113	Old Pirate	516520	7767850	454	-60	86.5	216	Old Pirate Western Limb	Pending
OPRC100114	Old Pirate	516570	7767875	454	-60	86.5	120	Old Pirate Western Limb	Pending
OPRC100115	Old Pirate	516550	7767875	454	-60	86.5	150	Old Pirate Western Limb	Pending
OPRC100116	Old Pirate	516530	7767875	454	-60	86.5	180	Old Pirate Western Limb	Pending
OPRC100117	Old Pirate	516510	7767925	454	-60	86.5	210	Old Pirate Western Limb	Pending
OPRC100118	Old Pirate	516550	7767925	454	-60	86.5	150	Old Pirate Western Limb	Pending
OPRC100119	Old Pirate	516530	7767925	454	-60	86.5	180	Old Pirate Western Limb	Pending

First 2 letter prefix: OP = Old Pirate. Second 2 letter prefix: RC = Reverse Circulation.

### Appendix 3

Table 3.1. Old Pirate Resource Estimation without utilising a top-cut. Refer release dated 16/04/2012 for further details.

All Vein Models	Tonnes	Gold (g/t)	Ounces
Indicated	347,000	5.31	59,200
Inferred	1,327,000	11.86	505,800
<b>Total</b>	<b>1,673,000</b>	<b>10.50</b>	<b>565,000</b>
High Grade Vein Models Only	Tonnes	Gold (g/t)	Ounces
Indicated	132,000	7.74	32,800
Inferred	354,000	22.64	257,600
<b>Total</b>	<b>486,000</b>	<b>18.60</b>	<b>290,400</b>

\*Note - totals may vary due to rounding.

Table 3.2. Old Pirate Resource Estimation with utilising 300g/t top-cut. Refer release dated 16/04/2012 for further details.

All Vein Models	Tonnes	Gold (g/t)	Ounces
Indicated	347,000	5.25	58,500
Inferred	1,327,000	8.65	368,900
<b>Total</b>	<b>1,673,000</b>	<b>7.95</b>	<b>427,400</b>
High Grade Vein Models Only	Tonnes	Gold (g/t)	Ounces
Indicated	132,000	7.62	32,200
Inferred	354,000	17.52	199,400
<b>Total</b>	<b>486,000</b>	<b>14.84</b>	<b>231,600</b>

\*Note - totals may vary due to rounding.